

Data Path : Z:\pestpcbsrv\HPCHEM1\ECD_P\Data\PP012021\
 Data File : PP032860.D
 Signal(s) : Signal #1: ECD1A.CH Signal #2: ECD2B.CH
 Acq On : 20 Jan 2021 12:06
 Operator : DD\AJ
 Sample : I.BLK
 Misc :
 ALS Vial : 2 Sample Multiplier: 1

Instrument :
 ECD_P
 ClientSampleId :
 I.BLK

Integration File signal 1: autoint1.e
 Integration File signal 2: autoint2.e
 Quant Time: Jan 20 14:04:11 2021
 Quant Method : Z:\pestpcbsrv\HPCHEM1\ECD_P\methods\PP011421.M
 Quant Title : GC EXTRACTABLES
 QLast Update : Thu Jan 14 08:12:55 2021
 Response via : Initial Calibration
 Integrator: ChemStation 6890 Scale Mode: Small noise peaks clipped

Volume Inj. : 2 µl
 Signal #1 Phase : ZB-MR1 Signal #2 Phase: ZB-MR2
 Signal #1 Info : 30Mx0.32mmx 0.50µ Signal #2 Info : 30M x 0.32mm x 0.25µm

Compound	RT#1	RT#2	Resp#1	Resp#2	ng/ml	ng/ml

System Monitoring Compounds						
1) SA Tetrachlo...	4.750	4.009	1320475	919045	22.735	19.537
2) SA Decachlor...	10.591	9.295	944696	815224	23.945	21.761
Target Compounds						
24) L5 AR-1248-4	6.963	0.000	35648	0	21.978	N.D. #
26) L6 AR-1254-1	6.963f	0.000	35648	0	21.464	N.D. #
28) L6 AR-1254-3	7.572f	0.000	31881	0	11.832	N.D. #
35) L7 AR-1260-5	8.905	0.000	17096	0	3.774	N.D. #
37) L8 AR-1262-2	8.905	0.000	17096	0	3.375	N.D. #

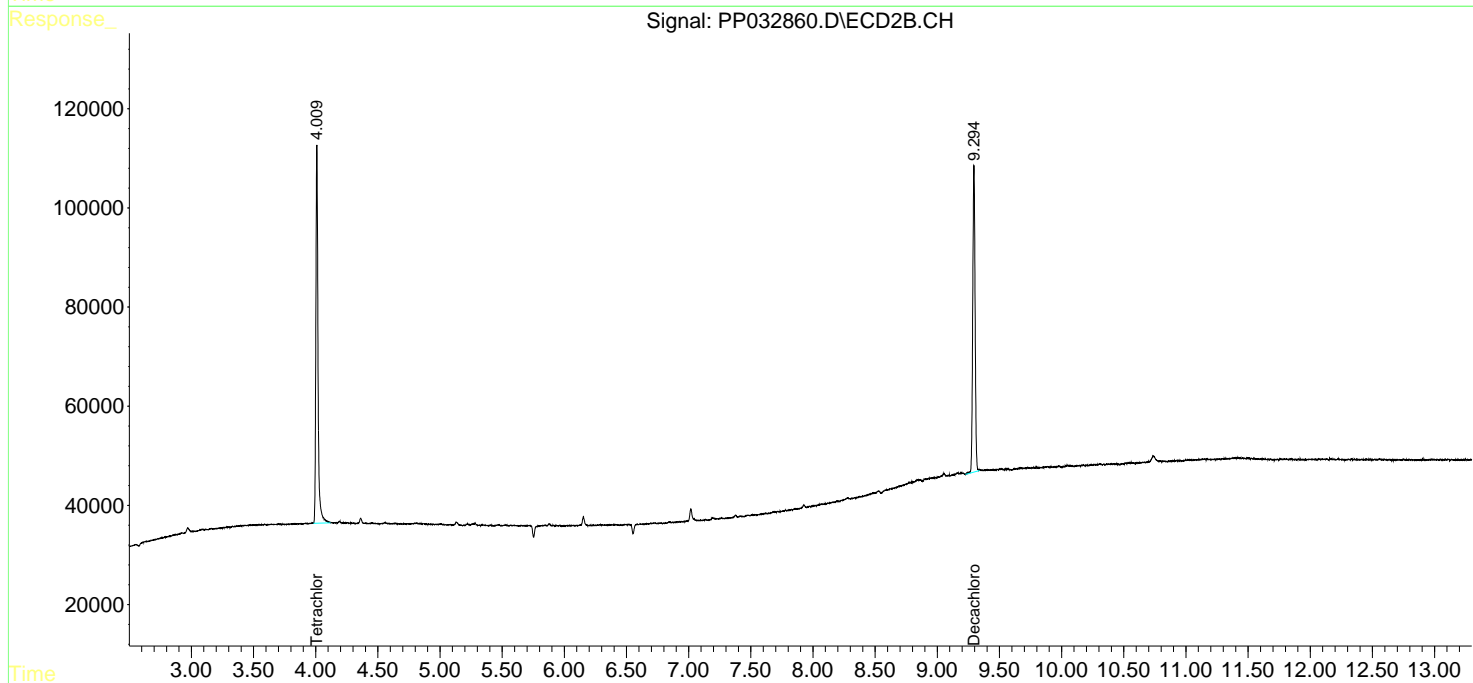
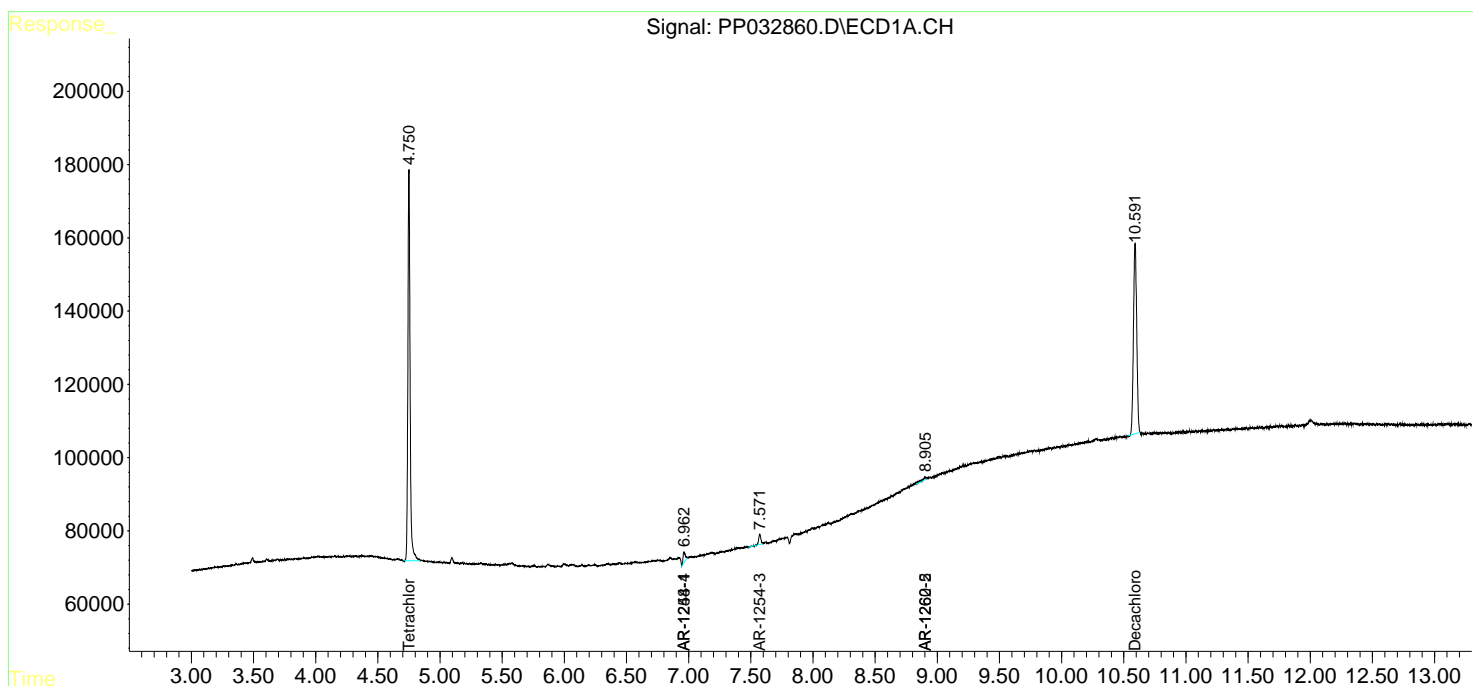
(f)=RT Delta > 1/2 Window (#)=Amounts differ by > 25% (m)=manual int.

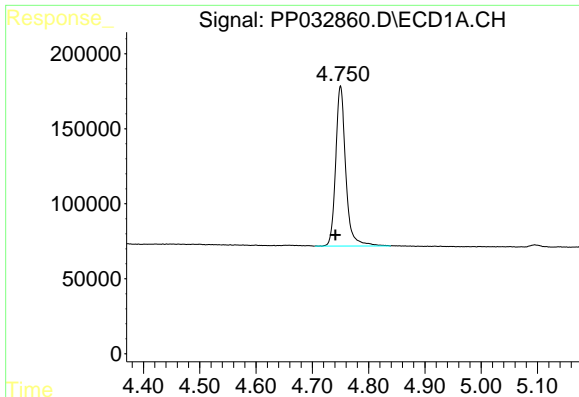
Data Path : Z:\pestpcbsrv\HPCHEM1\ECD_P\Data\PP012021\
 Data File : PP032860.D
 Signal(s) : Signal #1: ECD1A.CH Signal #2: ECD2B.CH
 Acq On : 20 Jan 2021 12:06
 Operator : DD\AJ
 Sample : I.BLK
 Misc :
 ALS Vial : 2 Sample Multiplier: 1

Instrument :
 ECD_P
 ClientSampleID :
 I.BLK

Integration File signal 1: autoint1.e
 Integration File signal 2: autoint2.e
 Quant Time: Jan 20 14:04:11 2021
 Quant Method : Z:\pestpcbsrv\HPCHEM1\ECD_P\methods\PP011421.M
 Quant Title : GC EXTRACTABLES
 QLast Update : Thu Jan 14 08:12:55 2021
 Response via : Initial Calibration
 Integrator: ChemStation 6890 Scale Mode: Small noise peaks clipped

Volume Inj. : 2 µl
 Signal #1 Phase : ZB-MR1 Signal #2 Phase: ZB-MR2
 Signal #1 Info : 30Mx0.32mmx 0.50µ Signal #2 Info : 30M x 0.32mm x 0.25µm

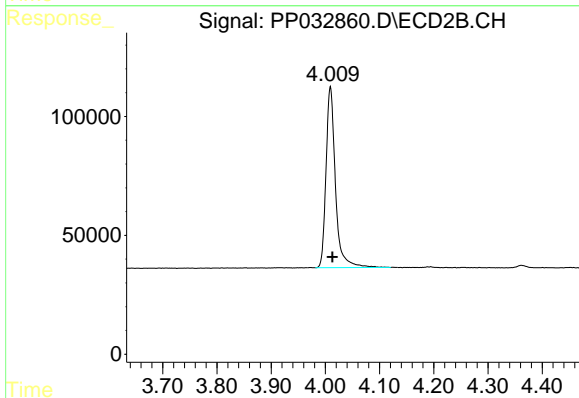




#1 Tetrachloro-m-xylene

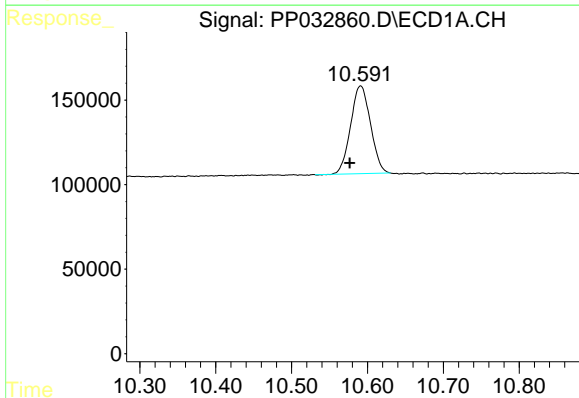
R.T.: 4.750 min
 Delta R.T.: 0.009 min
 Response: 1320475
 Conc: 22.74 ng/ml

Instrument :
 ECD_P
 ClientSampled :
 I.BLK



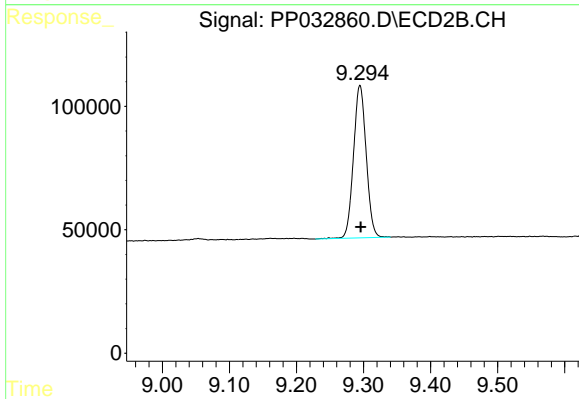
#1 Tetrachloro-m-xylene

R.T.: 4.009 min
 Delta R.T.: -0.004 min
 Response: 919045
 Conc: 19.54 ng/ml



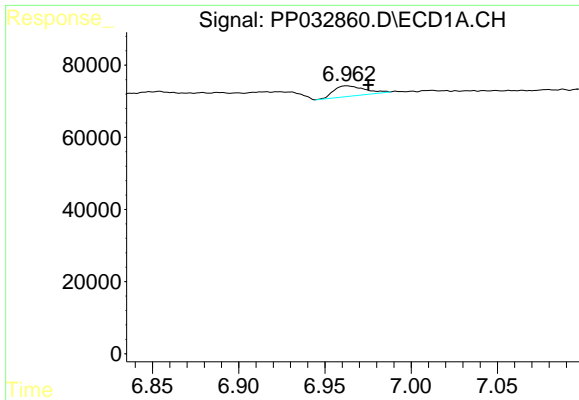
#2 Decachlorobiphenyl

R.T.: 10.591 min
 Delta R.T.: 0.014 min
 Response: 944696
 Conc: 23.94 ng/ml



#2 Decachlorobiphenyl

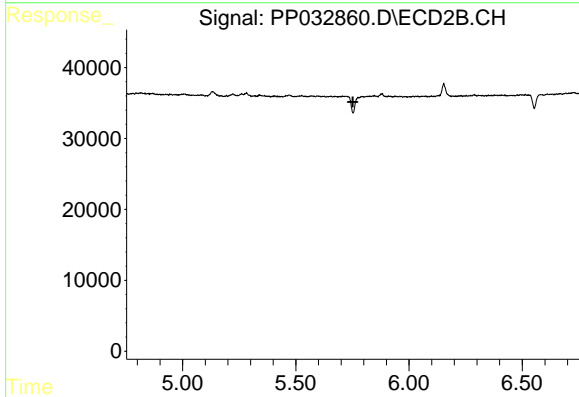
R.T.: 9.295 min
 Delta R.T.: -0.001 min
 Response: 815224
 Conc: 21.76 ng/ml



#24 AR-1248-4

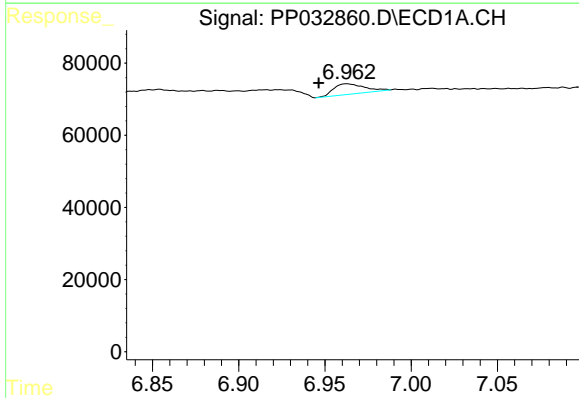
R.T.: 6.963 min
 Delta R.T.: -0.012 min
 Response: 35648
 Conc: 21.98 ng/ml

Instrument :
 ECD_P
 ClientSampleId :
 I.BLK



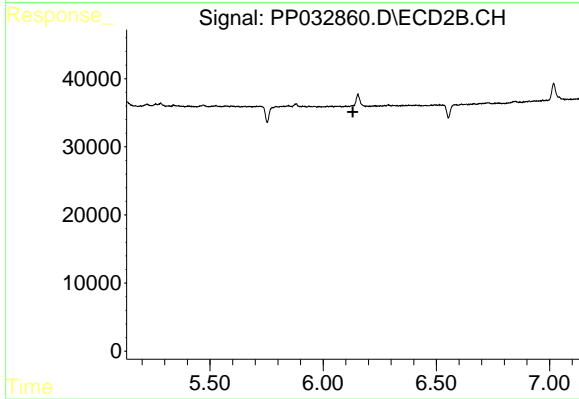
#24 AR-1248-4

R.T.: 0.000 min
 Exp R.T. : 5.752 min
 Response: 0
 Conc: N.D.



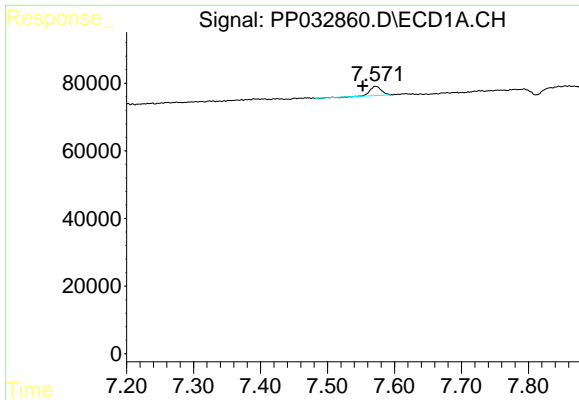
#26 AR-1254-1

R.T.: 6.963 min
 Delta R.T.: 0.016 min
 Response: 35648
 Conc: 21.46 ng/ml



#26 AR-1254-1

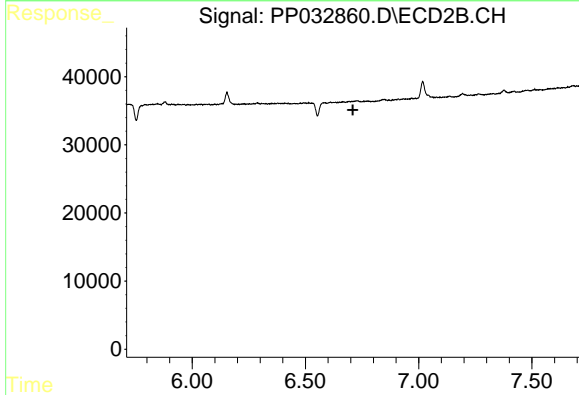
R.T.: 0.000 min
 Exp R.T. : 6.131 min
 Response: 0
 Conc: N.D.



#28 AR-1254-3

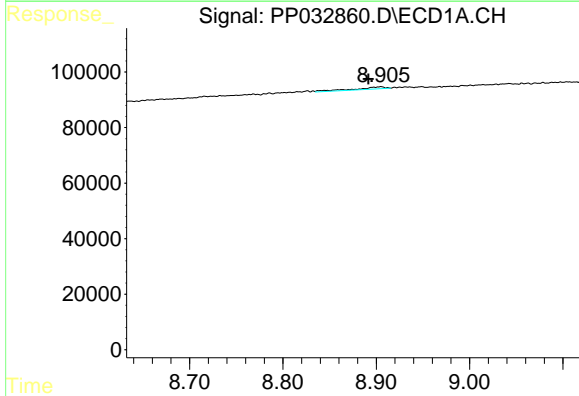
R.T.: 7.572 min
 Delta R.T.: 0.019 min
 Response: 31881
 Conc: 11.83 ng/ml

Instrument :
 ECD_P
 ClientSampled :
 I.BLK



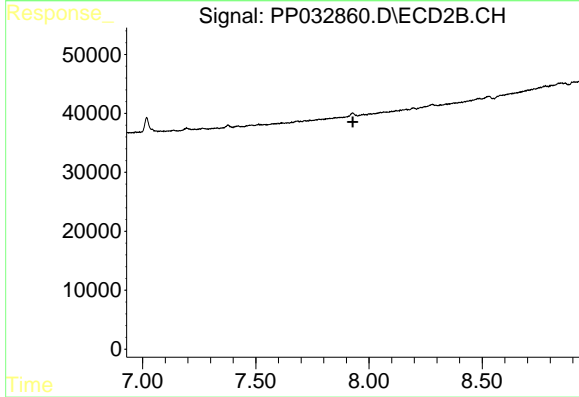
#28 AR-1254-3

R.T.: 0.000 min
 Exp R.T. : 6.710 min
 Response: 0
 Conc: N.D.



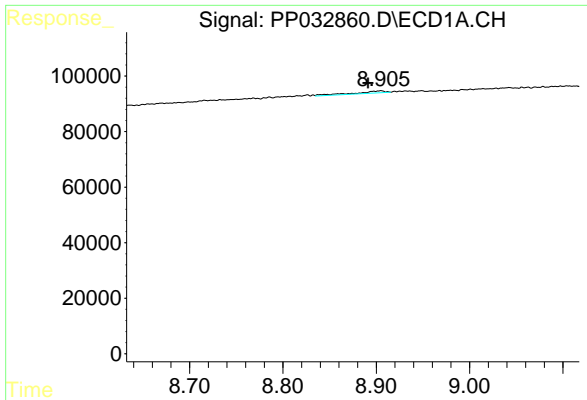
#35 AR-1260-5

R.T.: 8.905 min
 Delta R.T.: 0.014 min
 Response: 17096
 Conc: 3.77 ng/ml



#35 AR-1260-5

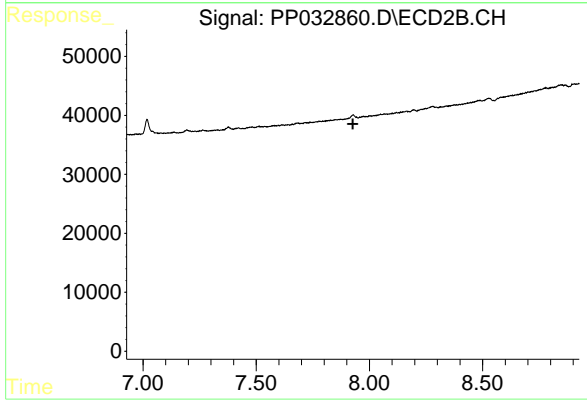
R.T.: 0.000 min
 Exp R.T. : 7.928 min
 Response: 0
 Conc: N.D.



#37 AR-1262-2

R.T.: 8.905 min
 Delta R.T.: 0.014 min
 Response: 17096
 Conc: 3.37 ng/ml

Instrument :
 ECD_P
 ClientSampled :
 I.BLK



#37 AR-1262-2

R.T.: 0.000 min
 Exp R.T. : 7.927 min
 Response: 0
 Conc: N.D.