

Data Path : Z:\pestpcbsrv\HPCHEM1\ECD\_P\Data\PP012022\  
 Data File : PP043157.D  
 Signal(s) : Signal #1: ECD1A.CH Signal #2: ECD2B.CH  
 Acq On : 20 Jan 2022 18:51  
 Operator : AJ\MA  
 Sample : AR1660CCC500  
 Misc :  
 ALS Vial : 3 Sample Multiplier: 1

Instrument :  
 ECD\_P  
 ClientSampleId :

Integration File signal 1: autoint1.e  
 Integration File signal 2: autoint2.e  
 Quant Time: Jan 21 00:27:58 2022  
 Quant Method : Z:\pestpcbsrv\HPCHEM1\ECD\_P\methods\PP011222.M  
 Quant Title : GC EXTRACTABLES  
 QLast Update : Thu Jan 13 19:45:07 2022  
 Response via : Initial Calibration  
 Integrator: ChemStation 6890 Scale Mode: Small noise peaks clipped

Volume Inj. : 2 µl  
 Signal #1 Phase : ZB-MR1 Signal #2 Phase: ZB-MR2  
 Signal #1 Info : 30Mx0.32mmx 0.50µ Signal #2 Info : 30M x 0.32mm x 0.25µm

Compound	RT#1	RT#2	Resp#1	Resp#2	ng/ml	ng/ml
System Monitoring Compounds						
1) SA Tetrachlo...	4.870	4.038	1110001	1184660	46.912	47.432
2) SA Decachlor...	10.789	9.365	656788	868759	44.929	44.537
Target Compounds						
3) L1 AR-1016-1	6.172	5.300	349716	476136	471.074	465.084
4) L1 AR-1016-2	6.194	5.321	521605	671810	453.595	470.406
5) L1 AR-1016-3	6.261	5.514	318752	374400	447.816	468.105
6) L1 AR-1016-4	6.365	5.565	255416	300451	421.227	483.423
7) L1 AR-1016-5	6.680	5.796	251447	327106	439.236	438.696
8) L2 AR-1221-1	5.107	4.296	38088	46687	143.076	139.818
9) L2 AR-1221-2	5.210	4.396	55767	71699	275.947	294.687
10) L2 AR-1221-3	5.295	4.486	210028	265641	319.893	338.857
11) L3 AR-1232-1	5.295	4.486	210028	265641	368.239	407.986
12) L3 AR-1232-2	5.879	5.321	285519	671810	1052.666	1071.266
13) L3 AR-1232-3	6.194	5.514	521605	374400	1068.638	1132.192
14) L3 AR-1232-4	6.365	5.610	255416	360786	1068.964	1222.284
15) L3 AR-1232-5	6.466	5.796	200834	327106	1278.268	1060.614
16) L4 AR-1242-1	6.172	5.300	349716	476136	590.270	594.142
17) L4 AR-1242-2	6.194	5.321	521605	671810	584.645	593.317
18) L4 AR-1242-3	6.261	5.514	318752	374400	574.481	587.196
19) L4 AR-1242-4	6.365	5.610	255416	360786	561.377	587.353
20) L4 AR-1242-5	7.144	6.177	33649	282523	75.016	392.629 #
21) L5 AR-1248-1	6.172	5.300	349716	476136	853.245	847.616
22) L5 AR-1248-2	6.466	5.565	200834	300451	356.729	370.177
23) L5 AR-1248-3	6.680	5.610	251447	360786	370.866	419.768
24) L5 AR-1248-4	7.104	5.796	35407	327106	49.088	340.831 #
25) L5 AR-1248-5	7.144	6.219	33649	70315	46.118	73.652 #
26) L6 AR-1254-1	7.077	6.177	158683	282523	202.229	182.190
27) L6 AR-1254-2	7.305	6.335	167979	253238	133.466	186.540 #
28) L6 AR-1254-3	7.683	6.776	98638	477408	76.027	223.199 #
29) L6 AR-1254-4	7.976	6.999	69853	69433	79.920	55.653 #
30) L6 AR-1254-5	8.403	7.429	527468	742424	562.983	435.396
31) L7 AR-1260-1	7.853	6.895	404519	623235	424.219	482.165
32) L7 AR-1260-2	8.116	7.092	449460	704204	435.190	450.848
33) L7 AR-1260-3	8.482	7.249	345351	646214	457.727	447.121
34) L7 AR-1260-4	8.710	7.733	408021	515726	479.016	455.209
35) L7 AR-1260-5	9.026	7.981	751474	1123904	456.728	448.122
36) L8 AR-1262-1	8.482	7.429	345351	742424	327.051	820.126 #
37) L8 AR-1262-2	9.026	7.733	751474	515726	434.132	344.767
38) L8 AR-1262-3	9.345	8.269	434879	254819	471.810	228.398 #
39) L8 AR-1262-4	9.420	8.332	144253	815819	267.419	400.194 #
40) L8 AR-1262-5	10.060	8.832	249116	267489	409.966	288.464 #
41) L9 AR-1268-1	9.345	8.269	434879	254819	210.940	82.676 #

Data Path : Z:\pestpcbsrv\HPCHEM1\ECD\_P\Data\PP012022\  
 Data File : PP043157.D  
 Signal(s) : Signal #1: ECD1A.CH Signal #2: ECD2B.CH  
 Acq On : 20 Jan 2022 18:51  
 Operator : AJ\MA  
 Sample : AR1660CCC500  
 Misc :  
 ALS Vial : 3 Sample Multiplier: 1

Instrument :  
 ECD\_P  
 ClientSampleId :

Integration File signal 1: autoint1.e  
 Integration File signal 2: autoint2.e  
 Quant Time: Jan 21 00:27:58 2022  
 Quant Method : Z:\pestpcbsrv\HPCHEM1\ECD\_P\methods\PP011222.M  
 Quant Title : GC EXTRACTABLES  
 QLast Update : Thu Jan 13 19:45:07 2022  
 Response via : Initial Calibration  
 Integrator: ChemStation 6890 Scale Mode: Small noise peaks clipped

Volume Inj. : 2 µl  
 Signal #1 Phase : ZB-MR1 Signal #2 Phase: ZB-MR2  
 Signal #1 Info : 30Mx0.32mmx 0.50µ Signal #2 Info : 30M x 0.32mm x 0.25µm

	Compound	RT#1	RT#2	Resp#1	Resp#2	ng/ml	ng/ml
42)	L9 AR-1268-2	9.420	8.332	144253	815819	75.527	286.837 #
43)	L9 AR-1268-3	9.646	8.541	12947	12160	7.685	5.102 #
44)	L9 AR-1268-4	10.060	8.832	249116	267489	394.233	262.308 #
45)	L9 AR-1268-5	10.461	9.117	71771	69939	13.467	9.846 #

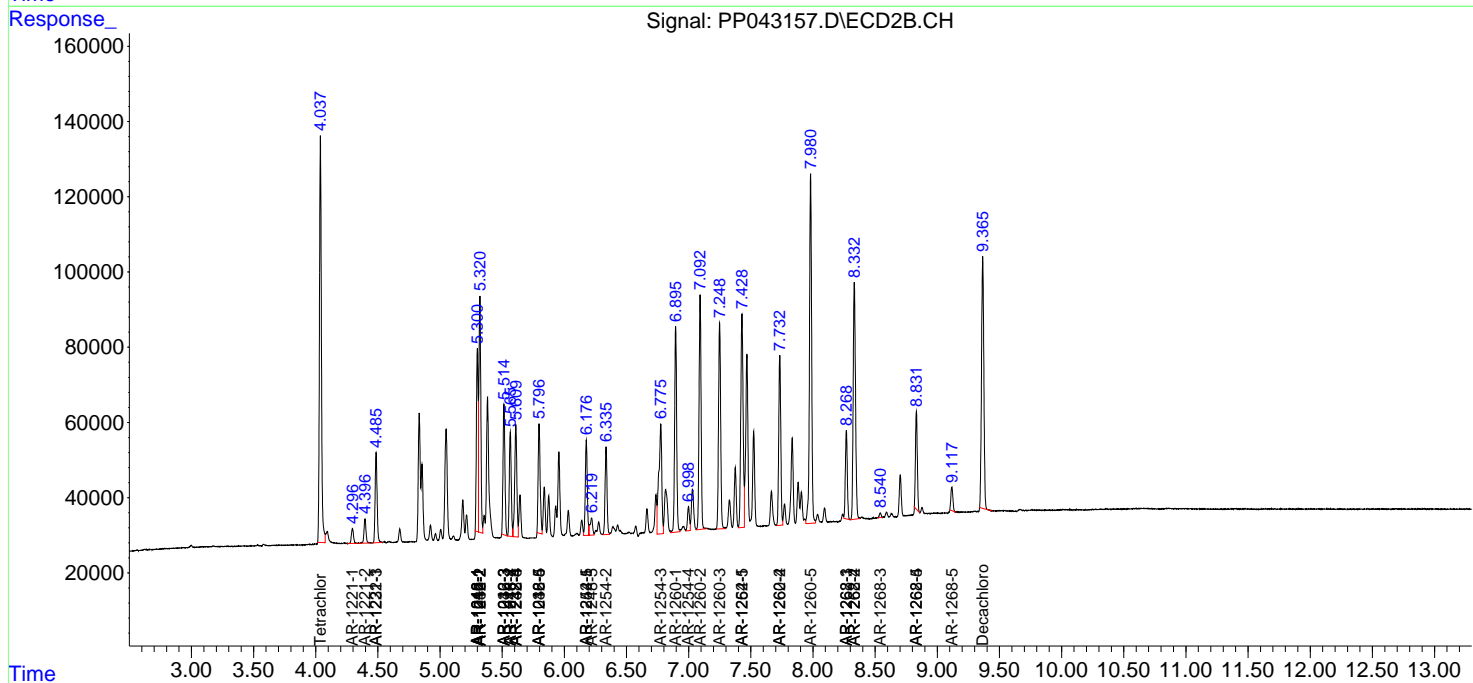
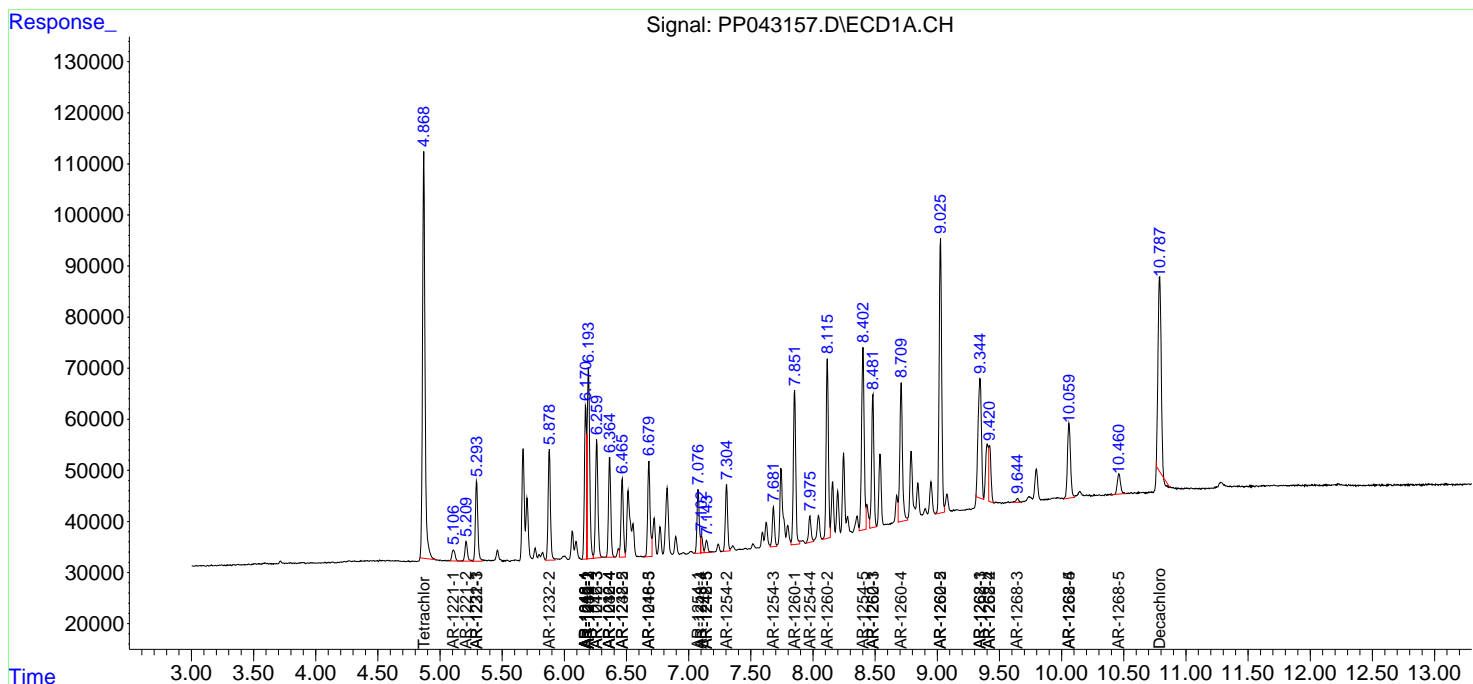
(f)=RT Delta > 1/2 Window (#)=Amounts differ by > 25% (m)=manual int.

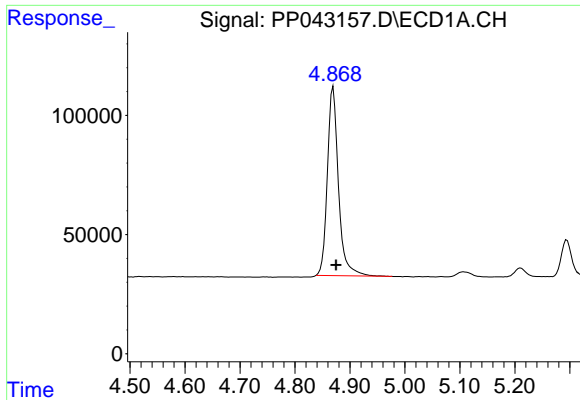
Data Path : Z:\pestpcbsrv\HPCHEM1\ECD\_P\Data\PP012022\  
 Data File : PP043157.D  
 Signal(s) : Signal #1: ECD1A.CH Signal #2: ECD2B.CH  
 Acq On : 20 Jan 2022 18:51  
 Operator : AJ\MA  
 Sample : AR1660CCC500  
 Misc :  
 ALS Vial : 3 Sample Multiplier: 1

Instrument :  
 ECD\_P  
 ClientSampleId :

Integration File signal 1: autoint1.e  
 Integration File signal 2: autoint2.e  
 Quant Time: Jan 21 00:27:58 2022  
 Quant Method : Z:\pestpcbsrv\HPCHEM1\ECD\_P\methods\PP011222.M  
 Quant Title : GC EXTRACTABLES  
 QLast Update : Thu Jan 13 19:45:07 2022  
 Response via : Initial Calibration  
 Integrator: ChemStation 6890 Scale Mode: Small noise peaks clipped

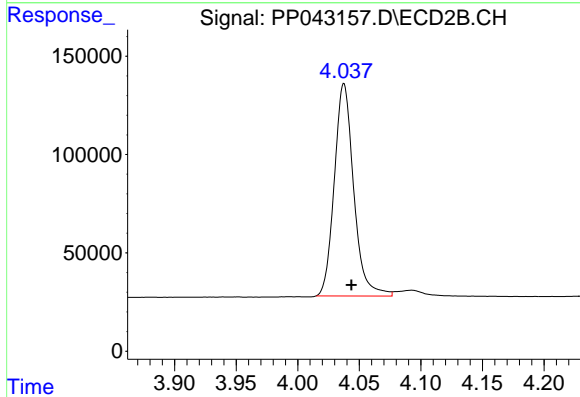
Volume Inj. : 2 µl  
 Signal #1 Phase : ZB-MR1 Signal #2 Phase: ZB-MR2  
 Signal #1 Info : 30Mx0.32mmx 0.50µ Signal #2 Info : 30M x 0.32mm x 0.25µm



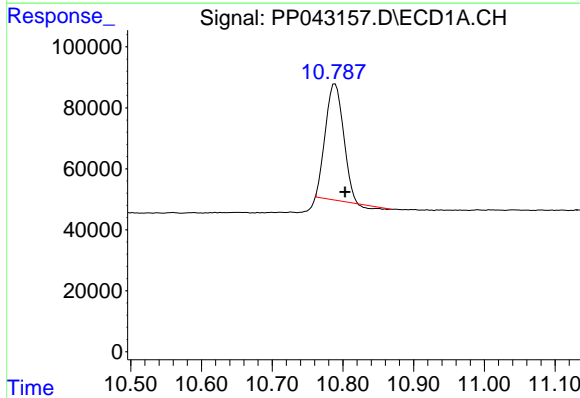


#1 Tetrachloro-m-xylene  
 R.T.: 4.870 min  
 Delta R.T.: -0.005 min  
 Response: 1110001  
 Conc: 46.91 ng/ml

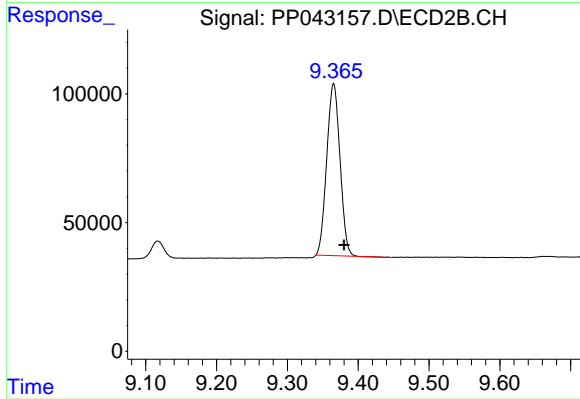
Instrument :  
 ECD\_P  
 ClientSampleId :



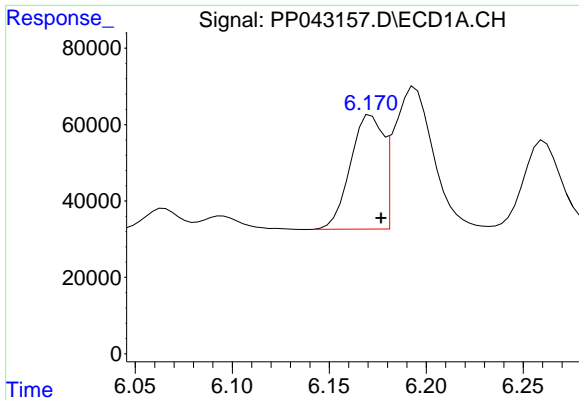
#1 Tetrachloro-m-xylene  
 R.T.: 4.038 min  
 Delta R.T.: -0.006 min  
 Response: 1184660  
 Conc: 47.43 ng/ml



#2 Decachlorobiphenyl  
 R.T.: 10.789 min  
 Delta R.T.: -0.014 min  
 Response: 656788  
 Conc: 44.93 ng/ml



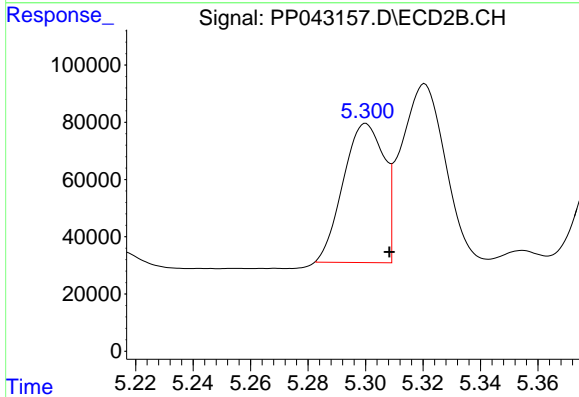
#2 Decachlorobiphenyl  
 R.T.: 9.365 min  
 Delta R.T.: -0.015 min  
 Response: 868759  
 Conc: 44.54 ng/ml



#3 AR-1016-1

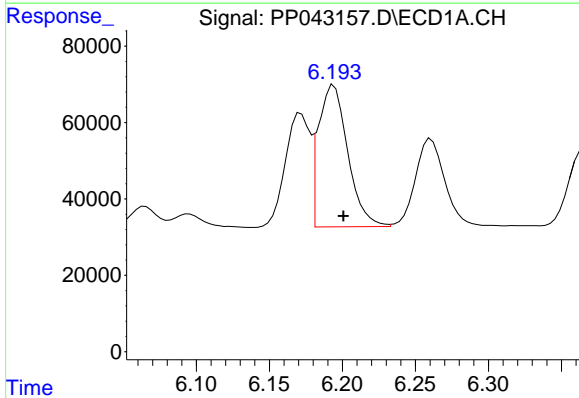
R.T.: 6.172 min  
 Delta R.T.: -0.005 min  
 Response: 349716  
 Conc: 471.07 ng/ml

Instrument :  
 ECD\_P  
 ClientSampleId :



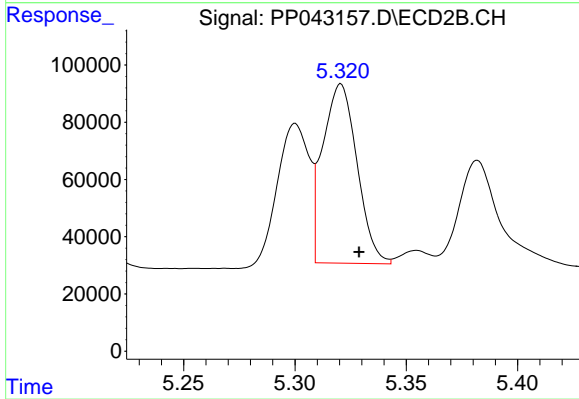
#3 AR-1016-1

R.T.: 5.300 min  
 Delta R.T.: -0.008 min  
 Response: 476136  
 Conc: 465.08 ng/ml



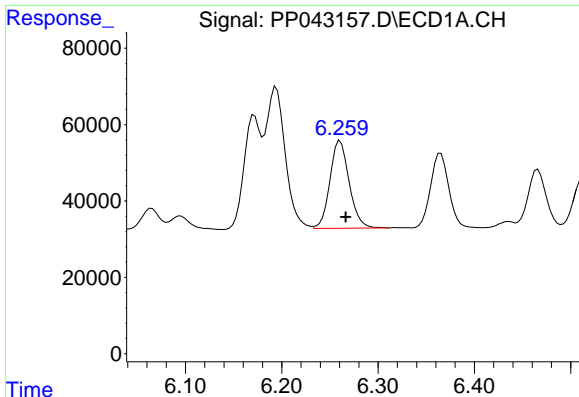
#4 AR-1016-2

R.T.: 6.194 min  
 Delta R.T.: -0.006 min  
 Response: 521605  
 Conc: 453.60 ng/ml



#4 AR-1016-2

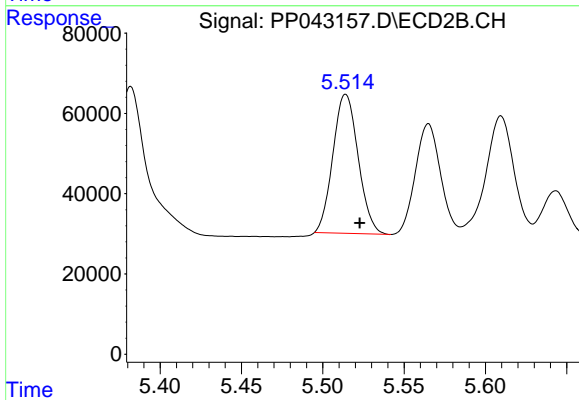
R.T.: 5.321 min  
 Delta R.T.: -0.008 min  
 Response: 671810  
 Conc: 470.41 ng/ml



#5 AR-1016-3

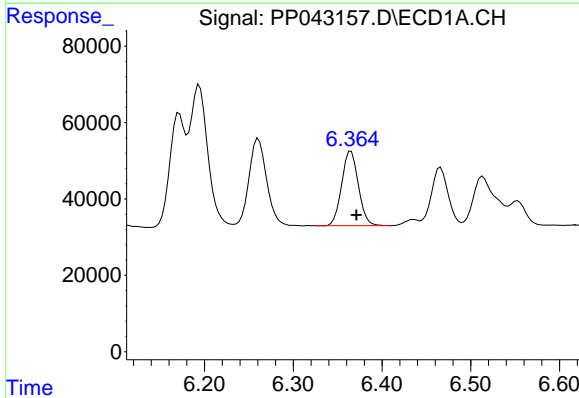
R.T.: 6.261 min  
 Delta R.T.: -0.006 min  
 Response: 318752  
 Conc: 447.82 ng/ml

Instrument :  
 ECD\_P  
 ClientSampleId :



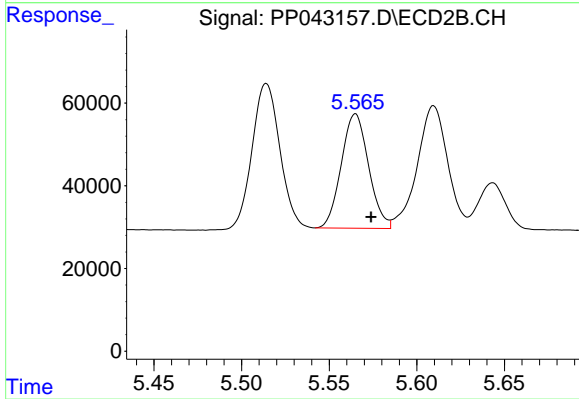
#5 AR-1016-3

R.T.: 5.514 min  
 Delta R.T.: -0.009 min  
 Response: 374400  
 Conc: 468.11 ng/ml



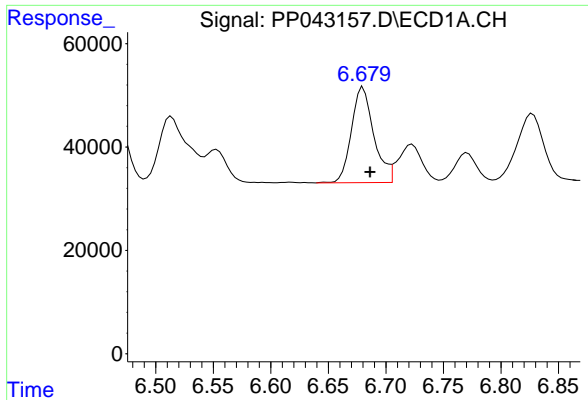
#6 AR-1016-4

R.T.: 6.365 min  
 Delta R.T.: -0.006 min  
 Response: 255416  
 Conc: 421.23 ng/ml



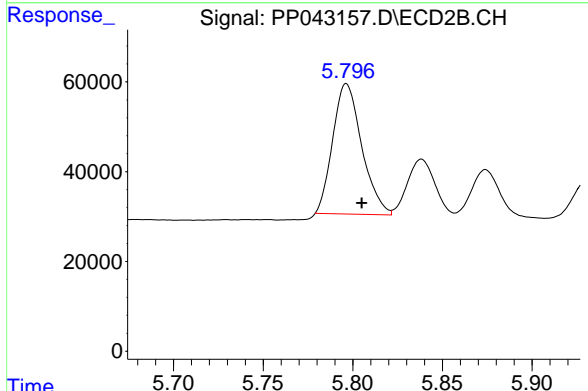
#6 AR-1016-4

R.T.: 5.565 min  
 Delta R.T.: -0.009 min  
 Response: 300451  
 Conc: 483.42 ng/ml

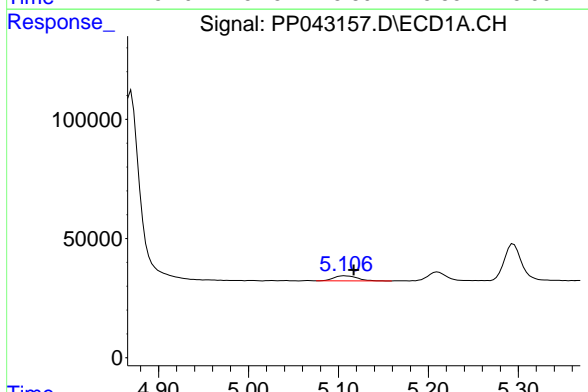


#7 AR-1016-5  
 R.T.: 6.680 min  
 Delta R.T.: -0.006 min  
 Response: 251447  
 Conc: 439.24 ng/ml

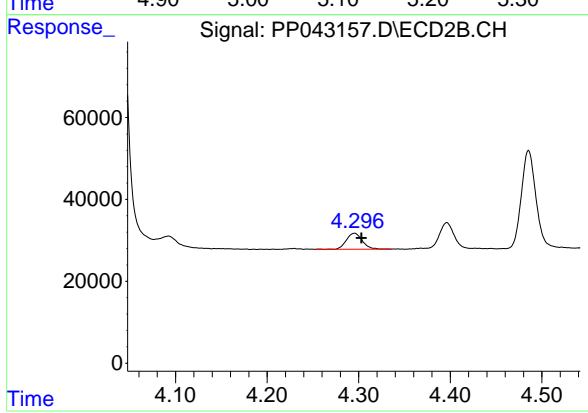
Instrument :  
 ECD\_P  
 ClientSampleId :



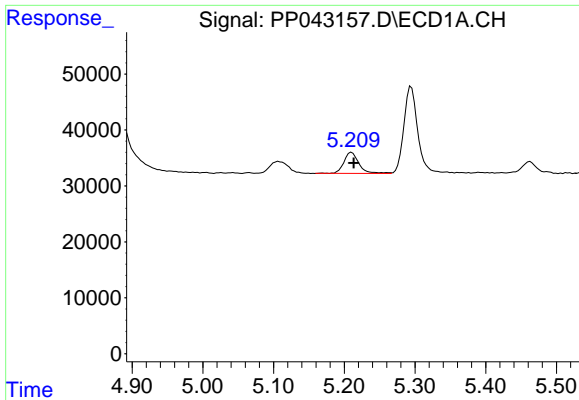
#7 AR-1016-5  
 R.T.: 5.796 min  
 Delta R.T.: -0.009 min  
 Response: 327106  
 Conc: 438.70 ng/ml



#8 AR-1221-1  
 R.T.: 5.107 min  
 Delta R.T.: -0.010 min  
 Response: 38088  
 Conc: 143.08 ng/ml



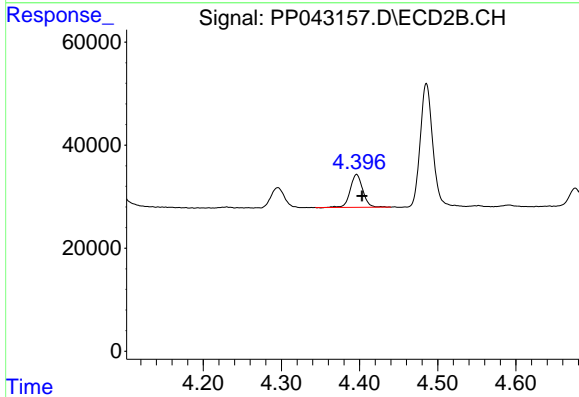
#8 AR-1221-1  
 R.T.: 4.296 min  
 Delta R.T.: -0.007 min  
 Response: 46687  
 Conc: 139.82 ng/ml



#9 AR-1221-2

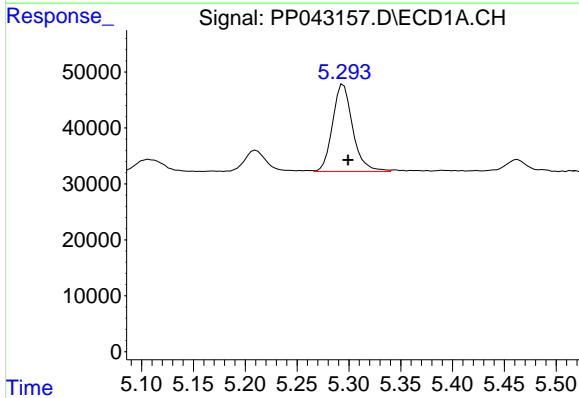
R.T.: 5.210 min  
 Delta R.T.: -0.003 min  
 Response: 55767  
 Conc: 275.95 ng/ml

Instrument :  
 ECD\_P  
 ClientSampleId :



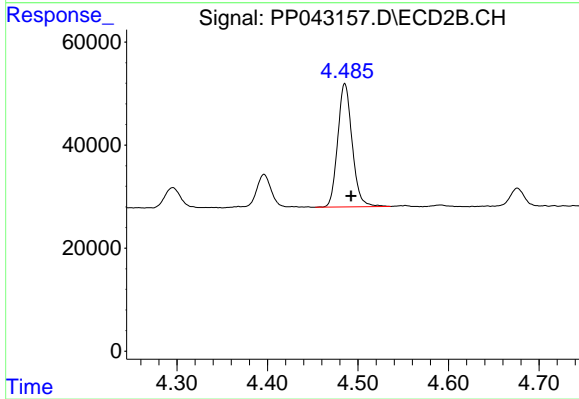
#9 AR-1221-2

R.T.: 4.396 min  
 Delta R.T.: -0.007 min  
 Response: 71699  
 Conc: 294.69 ng/ml



#10 AR-1221-3

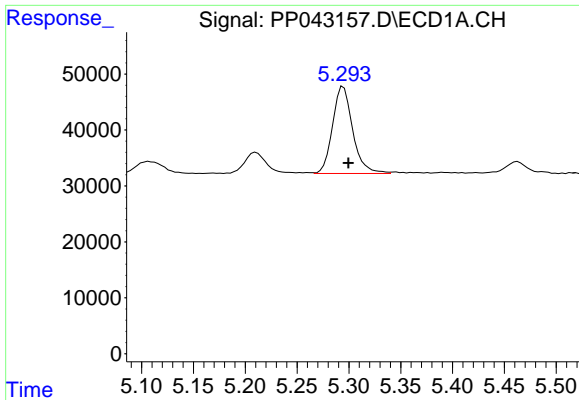
R.T.: 5.295 min  
 Delta R.T.: -0.004 min  
 Response: 210028  
 Conc: 319.89 ng/ml



#10 AR-1221-3

R.T.: 4.486 min  
 Delta R.T.: -0.007 min  
 Response: 265641  
 Conc: 338.86 ng/ml

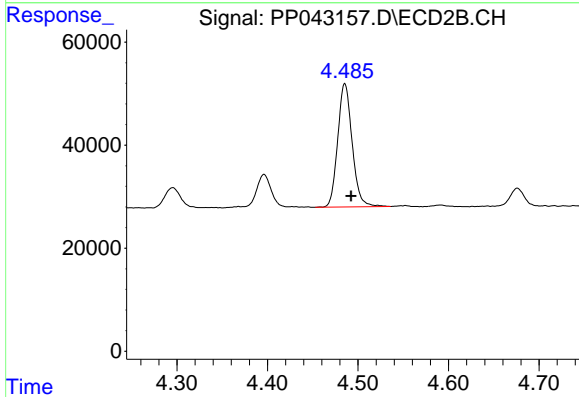




#11 AR-1232-1

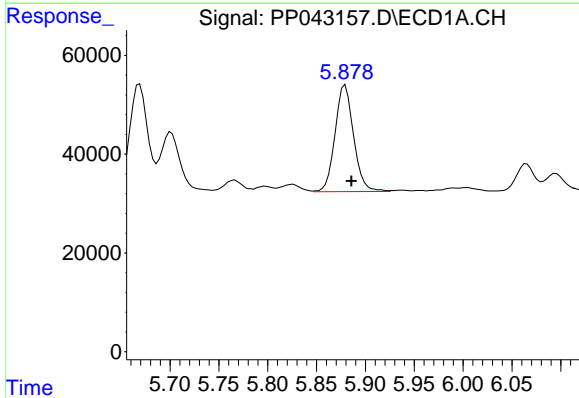
R.T.: 5.295 min  
 Delta R.T.: -0.005 min  
 Response: 210028  
 Conc: 368.24 ng/ml

Instrument :  
 ECD\_P  
 ClientSampleId :



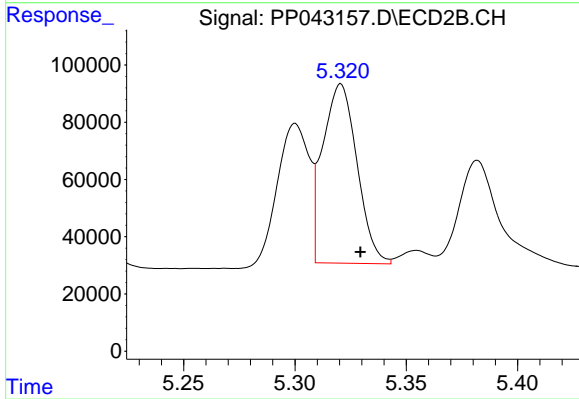
#11 AR-1232-1

R.T.: 4.486 min  
 Delta R.T.: -0.007 min  
 Response: 265641  
 Conc: 407.99 ng/ml



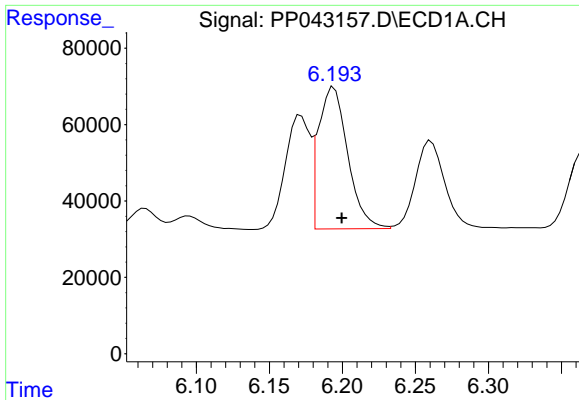
#12 AR-1232-2

R.T.: 5.879 min  
 Delta R.T.: -0.006 min  
 Response: 285519  
 Conc: 1052.67 ng/ml



#12 AR-1232-2

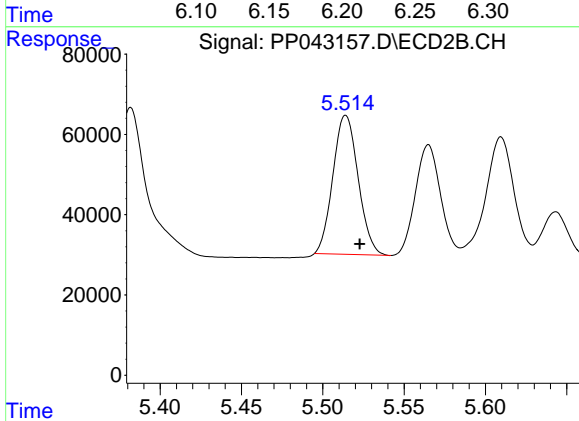
R.T.: 5.321 min  
 Delta R.T.: -0.009 min  
 Response: 671810  
 Conc: 1071.27 ng/ml



#13 AR-1232-3

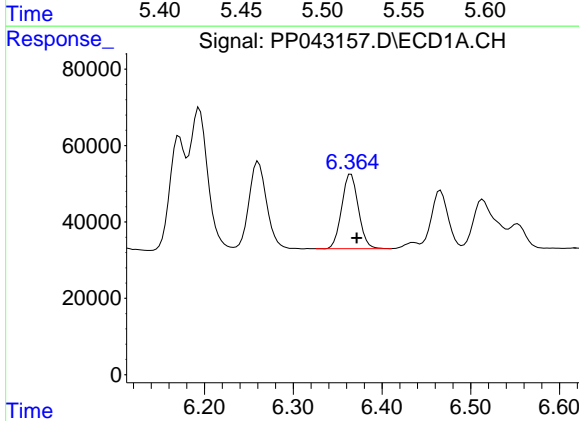
R.T.: 6.194 min  
 Delta R.T.: -0.005 min  
 Response: 521605  
 Conc: 1068.64 ng/ml

Instrument :  
 ECD\_P  
 ClientSampleId :



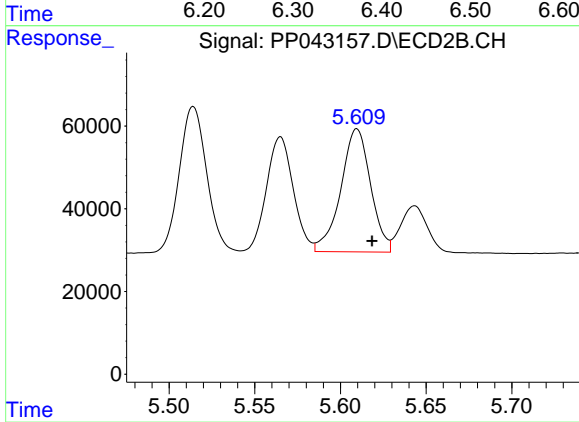
#13 AR-1232-3

R.T.: 5.514 min  
 Delta R.T.: -0.009 min  
 Response: 374400  
 Conc: 1132.19 ng/ml



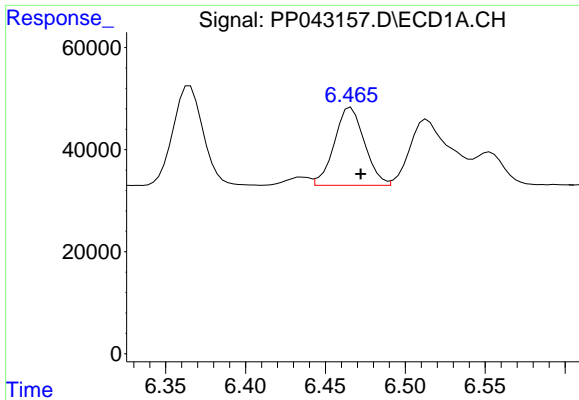
#14 AR-1232-4

R.T.: 6.365 min  
 Delta R.T.: -0.006 min  
 Response: 255416  
 Conc: 1068.96 ng/ml



#14 AR-1232-4

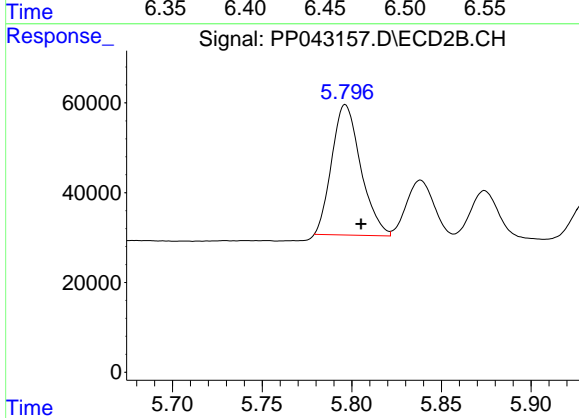
R.T.: 5.610 min  
 Delta R.T.: -0.009 min  
 Response: 360786  
 Conc: 1222.28 ng/ml



#15 AR-1232-5

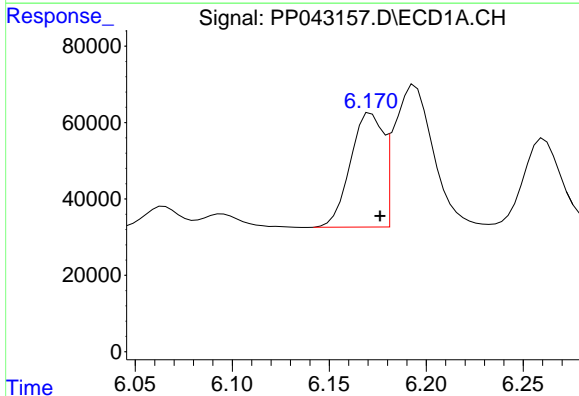
R.T.: 6.466 min  
 Delta R.T.: -0.006 min  
 Response: 200834  
 Conc: 1278.27 ng/ml

Instrument :  
 ECD\_P  
 ClientSampleId :



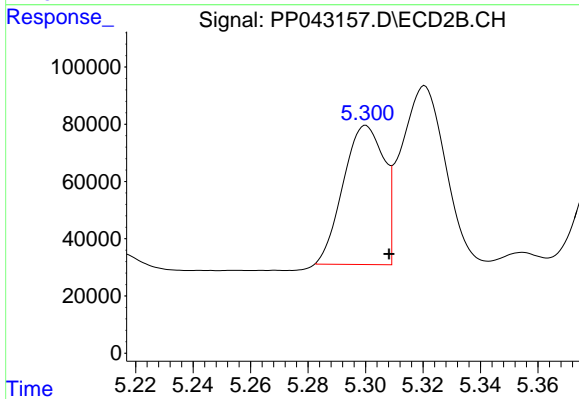
#15 AR-1232-5

R.T.: 5.796 min  
 Delta R.T.: -0.009 min  
 Response: 327106  
 Conc: 1060.61 ng/ml



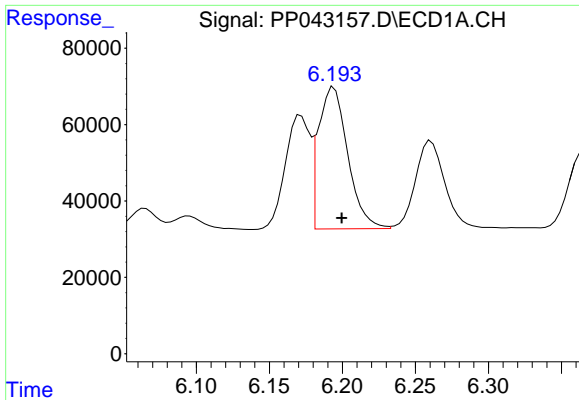
#16 AR-1242-1

R.T.: 6.172 min  
 Delta R.T.: -0.005 min  
 Response: 349716  
 Conc: 590.27 ng/ml



#16 AR-1242-1

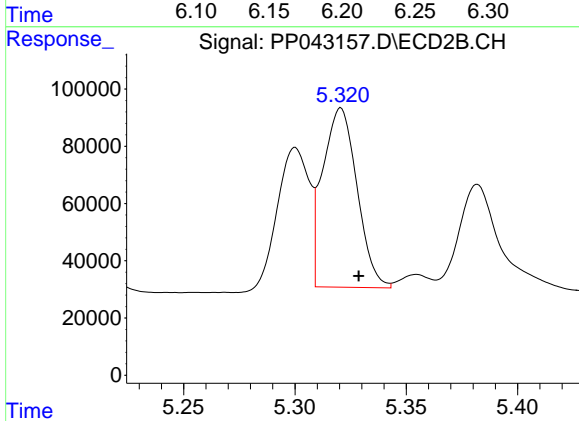
R.T.: 5.300 min  
 Delta R.T.: -0.008 min  
 Response: 476136  
 Conc: 594.14 ng/ml



#17 AR-1242-2

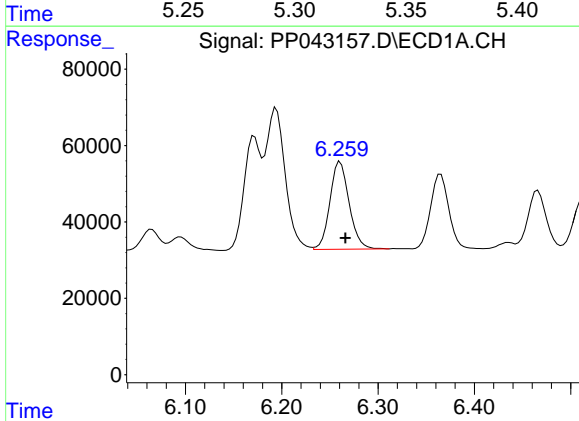
R.T.: 6.194 min  
 Delta R.T.: -0.005 min  
 Response: 521605  
 Conc: 584.64 ng/ml

Instrument :  
 ECD\_P  
 ClientSampleId :



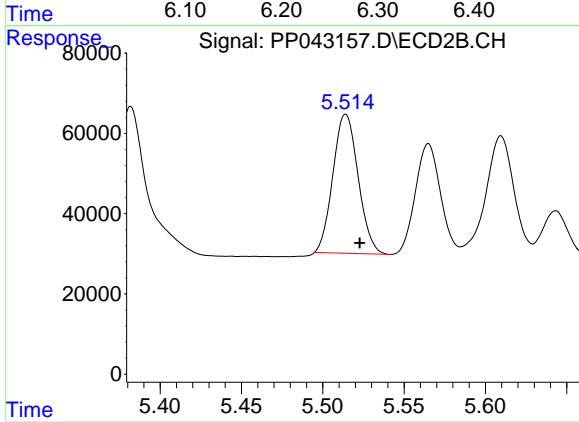
#17 AR-1242-2

R.T.: 5.321 min  
 Delta R.T.: -0.008 min  
 Response: 671810  
 Conc: 593.32 ng/ml



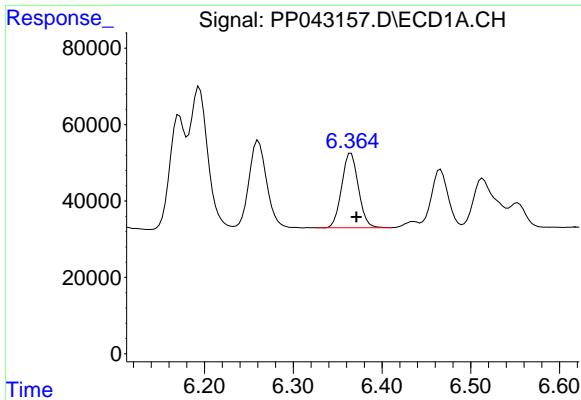
#18 AR-1242-3

R.T.: 6.261 min  
 Delta R.T.: -0.005 min  
 Response: 318752  
 Conc: 574.48 ng/ml



#18 AR-1242-3

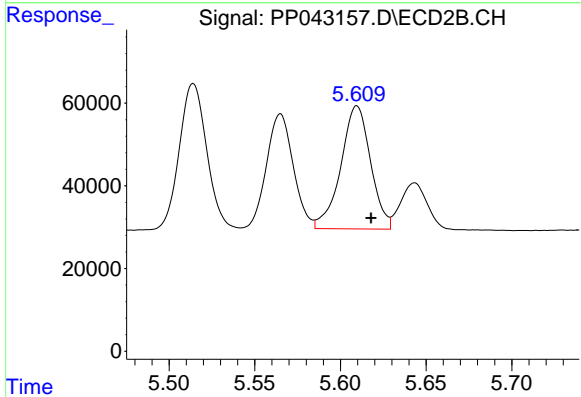
R.T.: 5.514 min  
 Delta R.T.: -0.008 min  
 Response: 374400  
 Conc: 587.20 ng/ml



#19 AR-1242-4

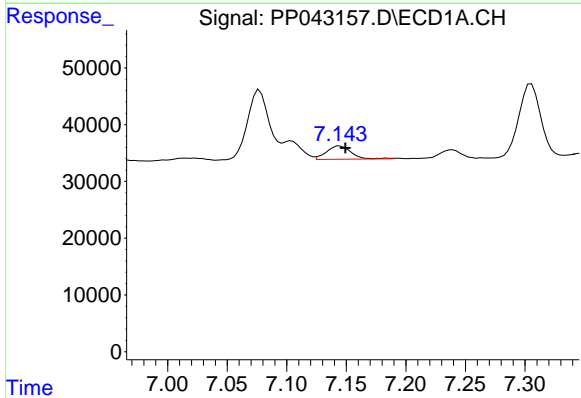
R.T.: 6.365 min  
 Delta R.T.: -0.006 min  
 Response: 255416  
 Conc: 561.38 ng/ml

Instrument :  
 ECD\_P  
 ClientSampleId :



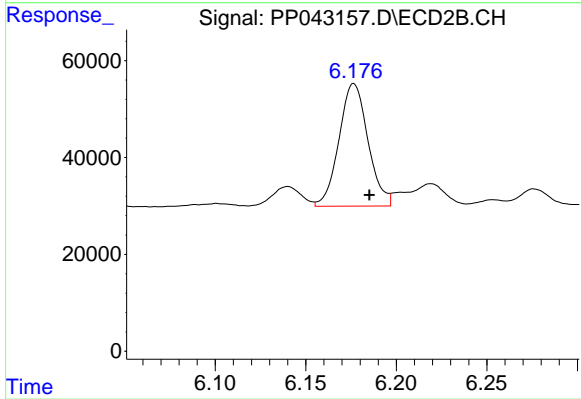
#19 AR-1242-4

R.T.: 5.610 min  
 Delta R.T.: -0.008 min  
 Response: 360786  
 Conc: 587.35 ng/ml



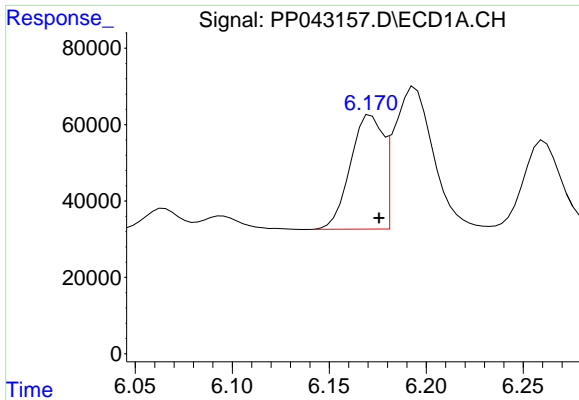
#20 AR-1242-5

R.T.: 7.144 min  
 Delta R.T.: -0.005 min  
 Response: 33649  
 Conc: 75.02 ng/ml



#20 AR-1242-5

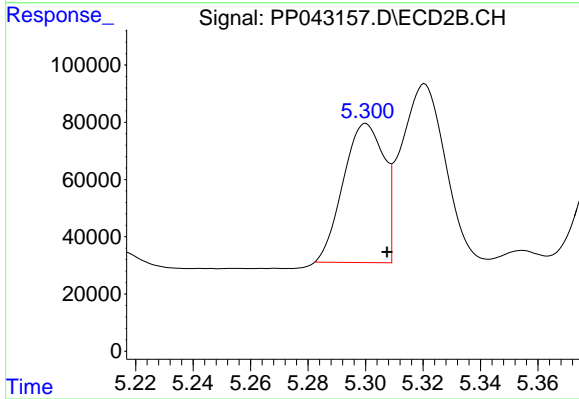
R.T.: 6.177 min  
 Delta R.T.: -0.009 min  
 Response: 282523  
 Conc: 392.63 ng/ml



#21 AR-1248-1

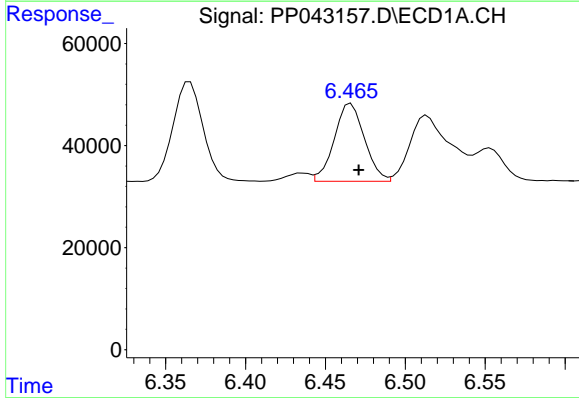
R.T.: 6.172 min  
 Delta R.T.: -0.004 min  
 Response: 349716  
 Conc: 853.25 ng/ml

Instrument :  
 ECD\_P  
 ClientSampleId :



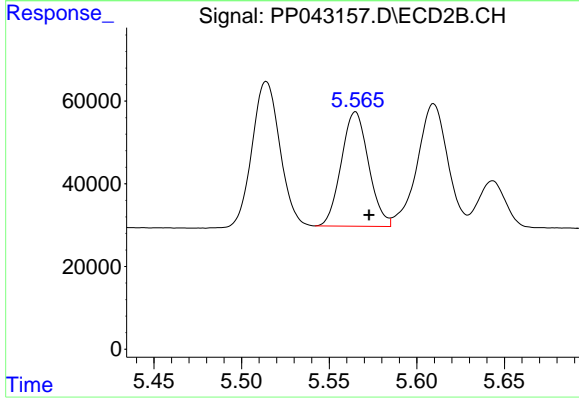
#21 AR-1248-1

R.T.: 5.300 min  
 Delta R.T.: -0.007 min  
 Response: 476136  
 Conc: 847.62 ng/ml



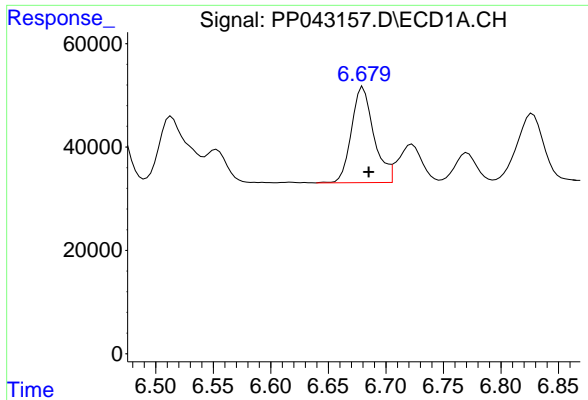
#22 AR-1248-2

R.T.: 6.466 min  
 Delta R.T.: -0.005 min  
 Response: 200834  
 Conc: 356.73 ng/ml



#22 AR-1248-2

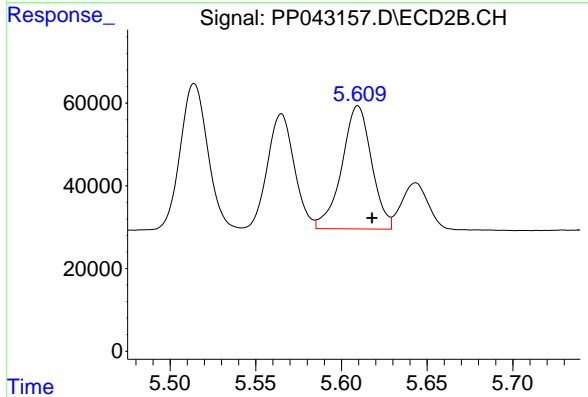
R.T.: 5.565 min  
 Delta R.T.: -0.008 min  
 Response: 300451  
 Conc: 370.18 ng/ml



#23 AR-1248-3

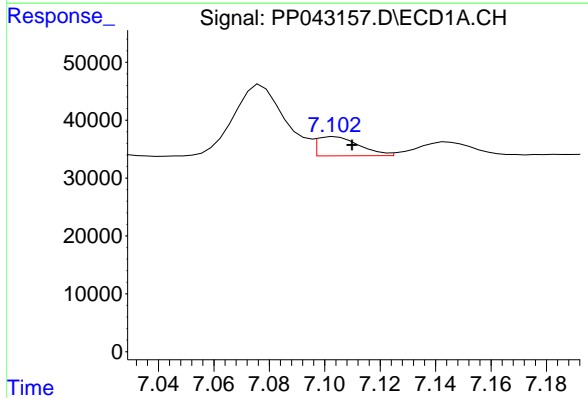
R.T.: 6.680 min  
 Delta R.T.: -0.005 min  
 Response: 251447  
 Conc: 370.87 ng/ml

Instrument :  
 ECD\_P  
 ClientSampleId :



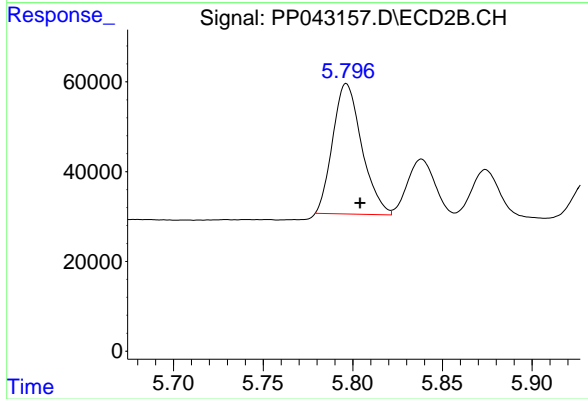
#23 AR-1248-3

R.T.: 5.610 min  
 Delta R.T.: -0.008 min  
 Response: 360786  
 Conc: 419.77 ng/ml



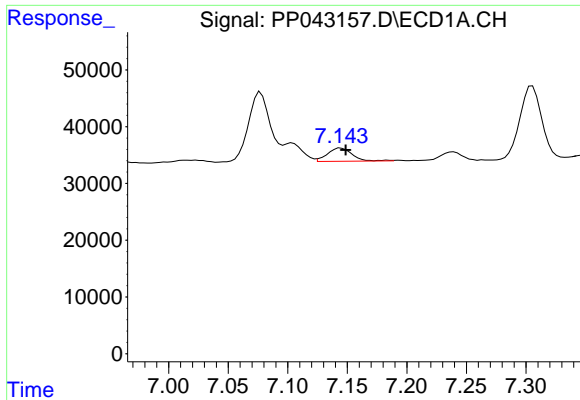
#24 AR-1248-4

R.T.: 7.104 min  
 Delta R.T.: -0.006 min  
 Response: 35407  
 Conc: 49.09 ng/ml



#24 AR-1248-4

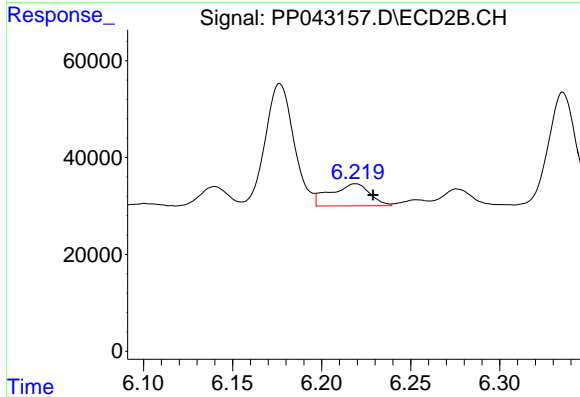
R.T.: 5.796 min  
 Delta R.T.: -0.008 min  
 Response: 327106  
 Conc: 340.83 ng/ml



#25 AR-1248-5

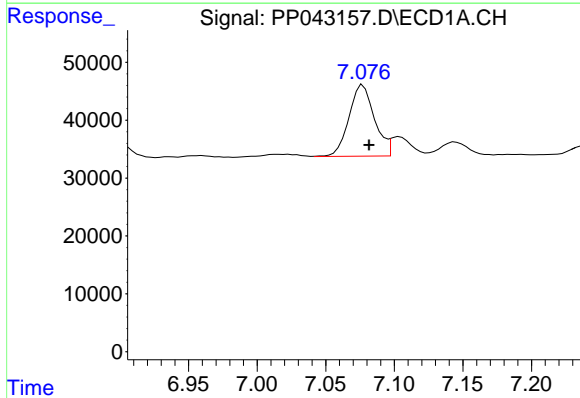
R.T.: 7.144 min  
 Delta R.T.: -0.004 min  
 Response: 33649  
 Conc: 46.12 ng/ml

Instrument :  
 ECD\_P  
 ClientSampleId :



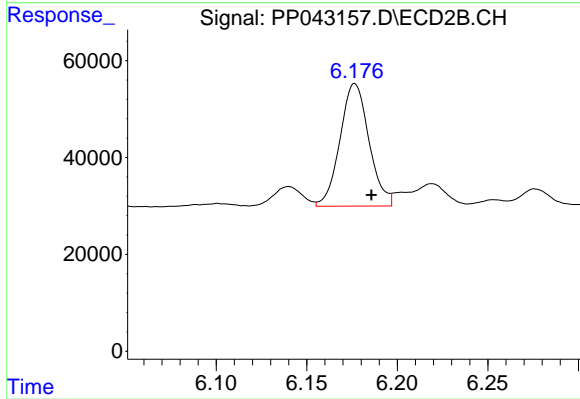
#25 AR-1248-5

R.T.: 6.219 min  
 Delta R.T.: -0.010 min  
 Response: 70315  
 Conc: 73.65 ng/ml



#26 AR-1254-1

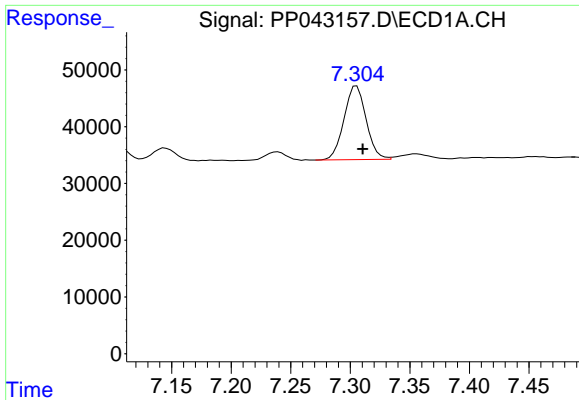
R.T.: 7.077 min  
 Delta R.T.: -0.004 min  
 Response: 158683  
 Conc: 202.23 ng/ml



#26 AR-1254-1

R.T.: 6.177 min  
 Delta R.T.: -0.009 min  
 Response: 282523  
 Conc: 182.19 ng/ml

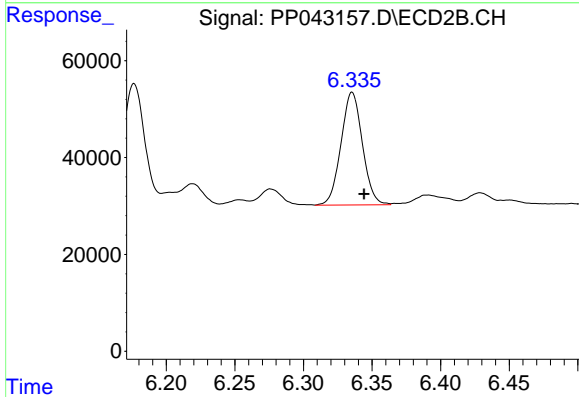




#27 AR-1254-2

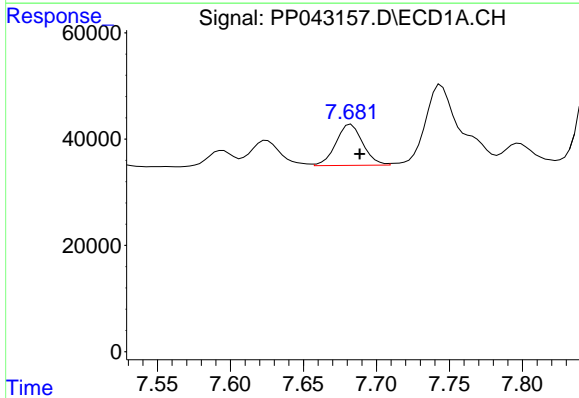
R.T.: 7.305 min  
 Delta R.T.: -0.005 min  
 Response: 167979  
 Conc: 133.47 ng/ml

Instrument :  
 ECD\_P  
 ClientSampleId :



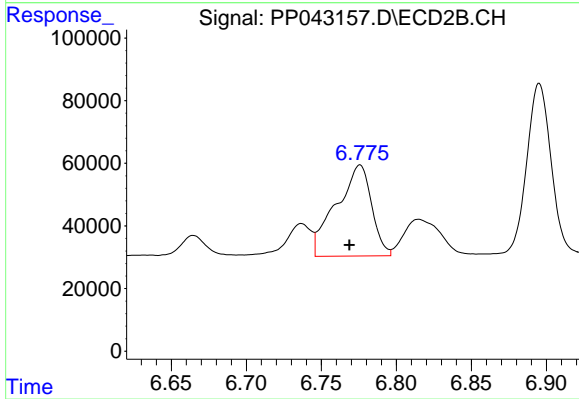
#27 AR-1254-2

R.T.: 6.335 min  
 Delta R.T.: -0.009 min  
 Response: 253238  
 Conc: 186.54 ng/ml



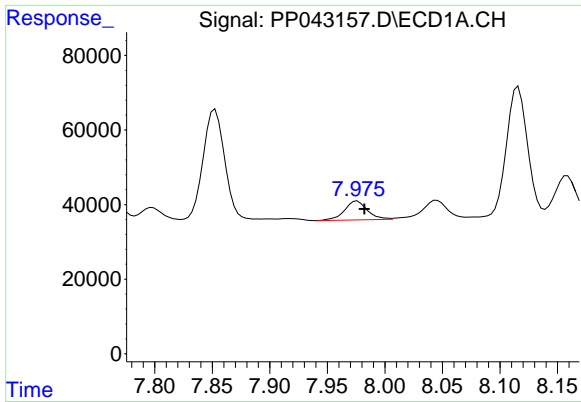
#28 AR-1254-3

R.T.: 7.683 min  
 Delta R.T.: -0.006 min  
 Response: 98638  
 Conc: 76.03 ng/ml



#28 AR-1254-3

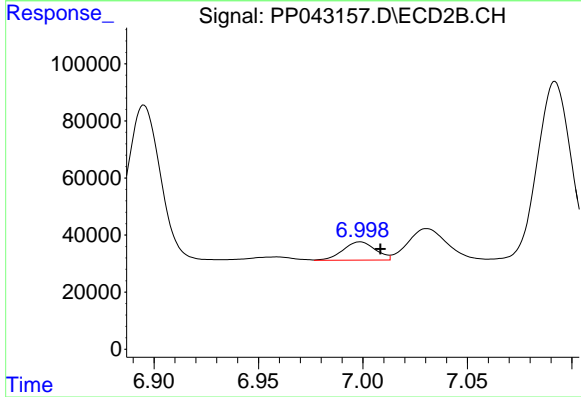
R.T.: 6.776 min  
 Delta R.T.: 0.007 min  
 Response: 477408  
 Conc: 223.20 ng/ml



#29 AR-1254-4

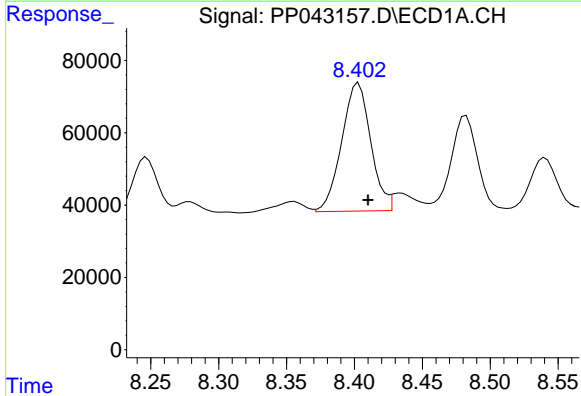
R.T.: 7.976 min  
 Delta R.T.: -0.006 min  
 Response: 69853  
 Conc: 79.92 ng/ml

Instrument :  
 ECD\_P  
 ClientSampleId :



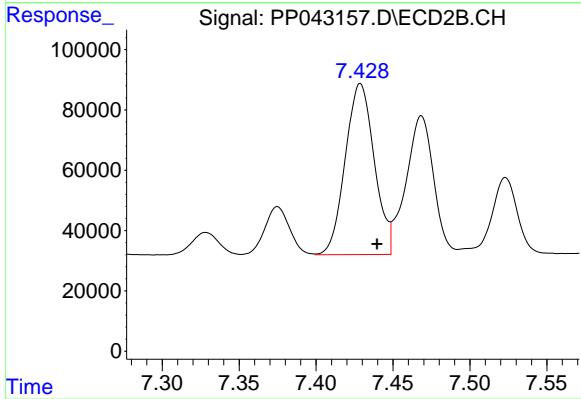
#29 AR-1254-4

R.T.: 6.999 min  
 Delta R.T.: -0.010 min  
 Response: 69433  
 Conc: 55.65 ng/ml



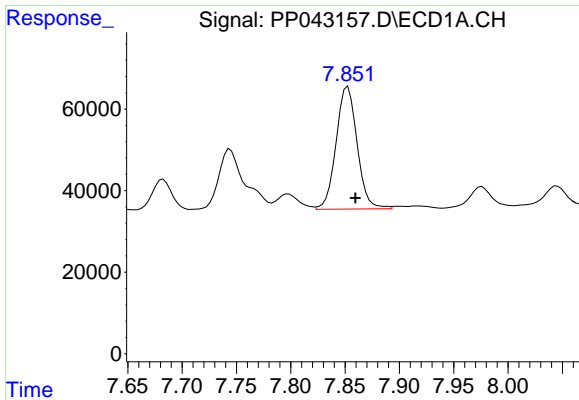
#30 AR-1254-5

R.T.: 8.403 min  
 Delta R.T.: -0.007 min  
 Response: 527468  
 Conc: 562.98 ng/ml



#30 AR-1254-5

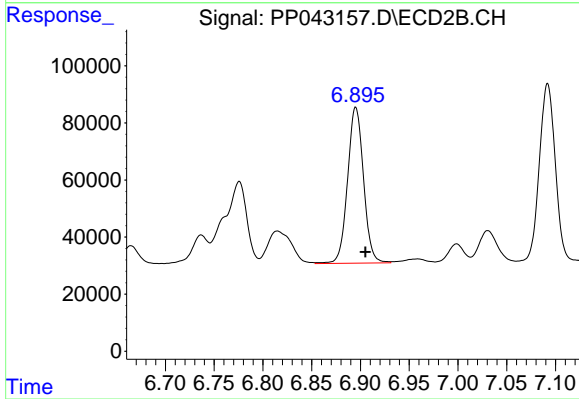
R.T.: 7.429 min  
 Delta R.T.: -0.011 min  
 Response: 742424  
 Conc: 435.40 ng/ml



#31 AR-1260-1

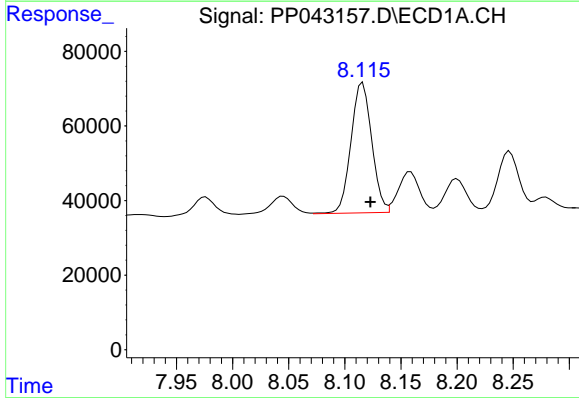
R.T.: 7.853 min  
 Delta R.T.: -0.007 min  
 Response: 404519  
 Conc: 424.22 ng/ml

Instrument :  
 ECD\_P  
 ClientSampleId :



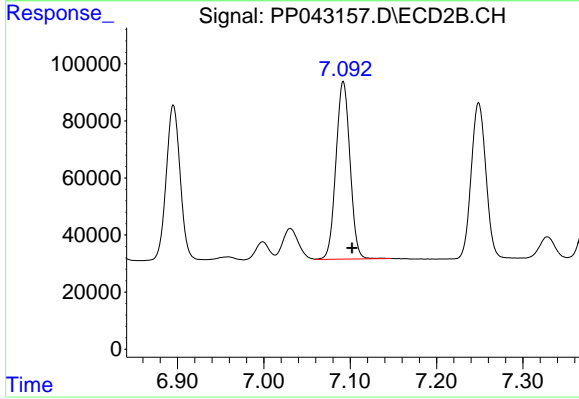
#31 AR-1260-1

R.T.: 6.895 min  
 Delta R.T.: -0.010 min  
 Response: 623235  
 Conc: 482.16 ng/ml



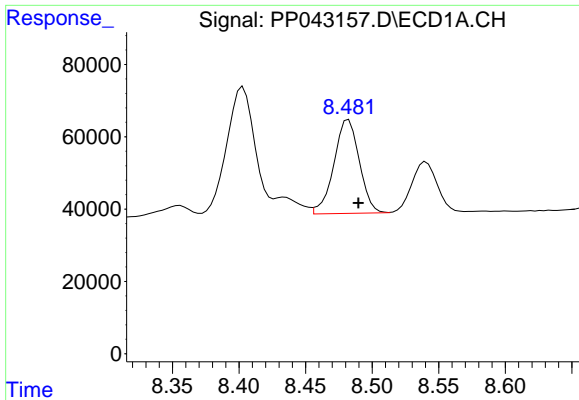
#32 AR-1260-2

R.T.: 8.116 min  
 Delta R.T.: -0.007 min  
 Response: 449460  
 Conc: 435.19 ng/ml



#32 AR-1260-2

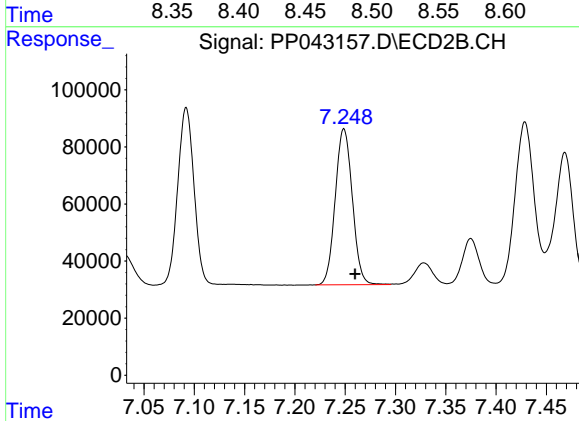
R.T.: 7.092 min  
 Delta R.T.: -0.010 min  
 Response: 704204  
 Conc: 450.85 ng/ml



#33 AR-1260-3

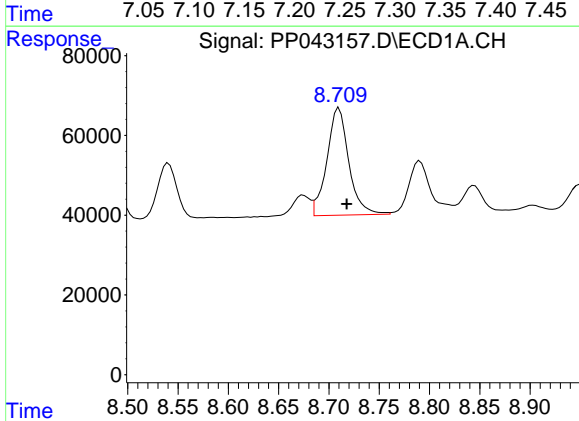
R.T.: 8.482 min  
 Delta R.T.: -0.007 min  
 Response: 345351  
 Conc: 457.73 ng/ml

Instrument :  
 ECD\_P  
 ClientSampleId :



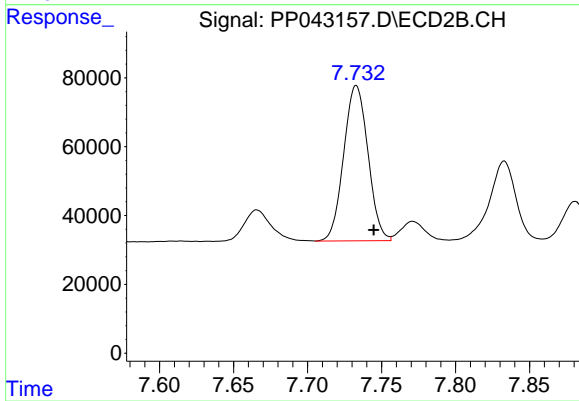
#33 AR-1260-3

R.T.: 7.249 min  
 Delta R.T.: -0.011 min  
 Response: 646214  
 Conc: 447.12 ng/ml



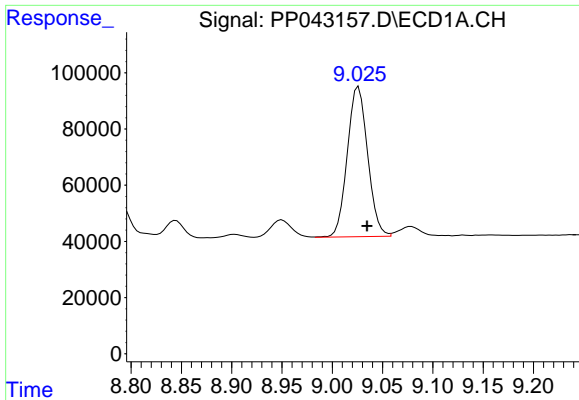
#34 AR-1260-4

R.T.: 8.710 min  
 Delta R.T.: -0.008 min  
 Response: 408021  
 Conc: 479.02 ng/ml



#34 AR-1260-4

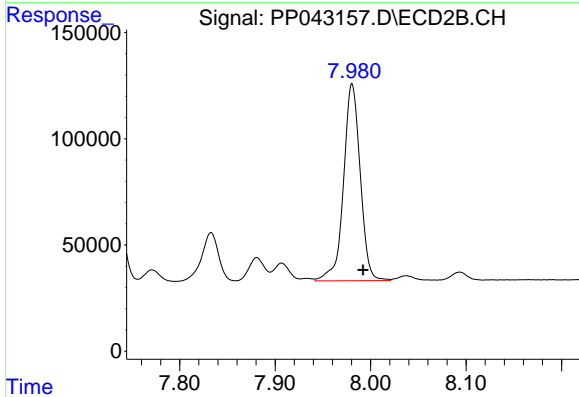
R.T.: 7.733 min  
 Delta R.T.: -0.012 min  
 Response: 515726  
 Conc: 455.21 ng/ml



#35 AR-1260-5

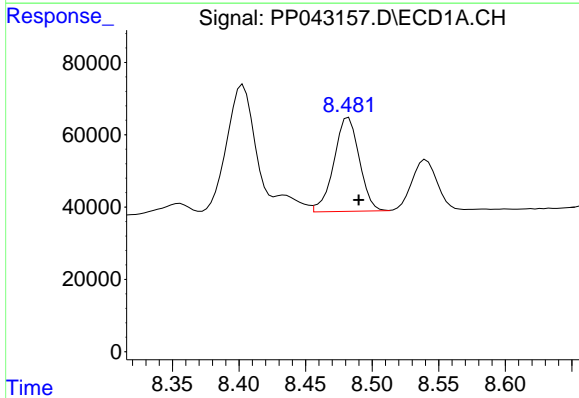
R.T.: 9.026 min  
 Delta R.T.: -0.009 min  
 Response: 751474  
 Conc: 456.73 ng/ml

Instrument :  
 ECD\_P  
 ClientSampleId :



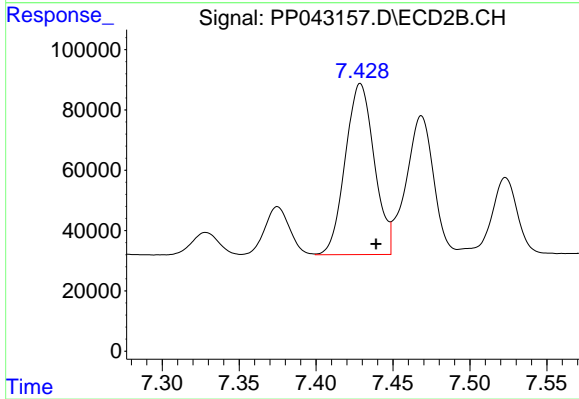
#35 AR-1260-5

R.T.: 7.981 min  
 Delta R.T.: -0.011 min  
 Response: 1123904  
 Conc: 448.12 ng/ml



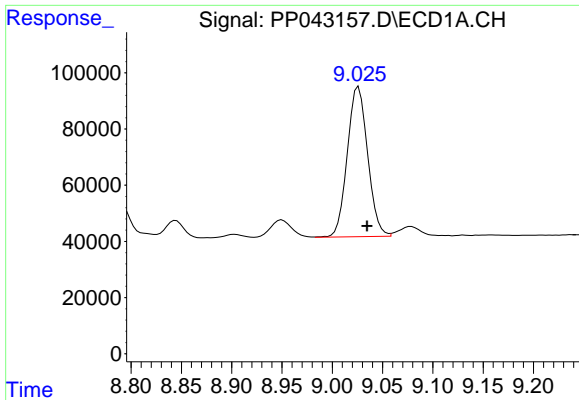
#36 AR-1262-1

R.T.: 8.482 min  
 Delta R.T.: -0.008 min  
 Response: 345351  
 Conc: 327.05 ng/ml



#36 AR-1262-1

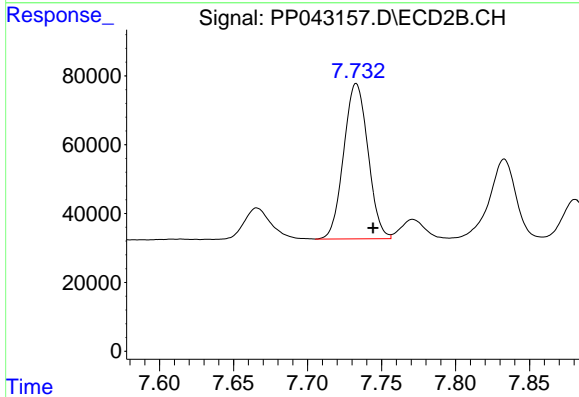
R.T.: 7.429 min  
 Delta R.T.: -0.010 min  
 Response: 742424  
 Conc: 820.13 ng/ml



#37 AR-1262-2

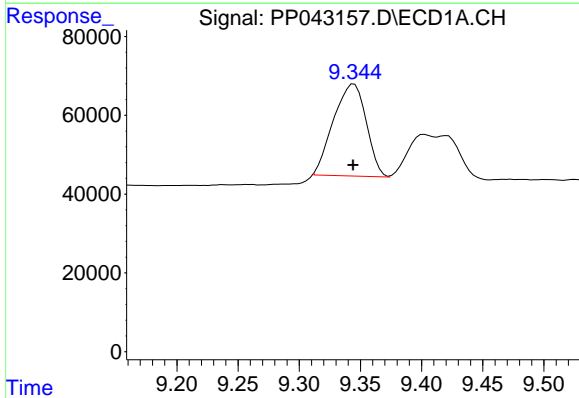
R.T.: 9.026 min  
 Delta R.T.: -0.008 min  
 Response: 751474  
 Conc: 434.13 ng/ml

Instrument :  
 ECD\_P  
 ClientSampleId :



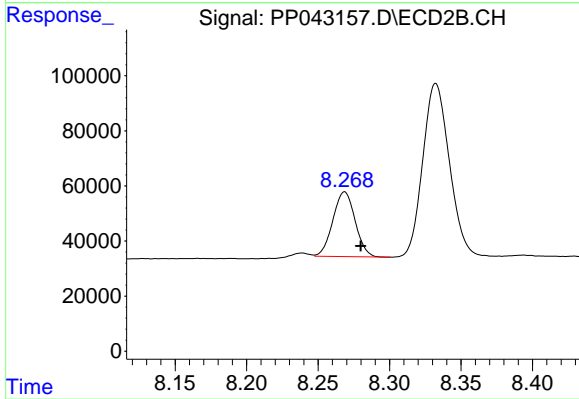
#37 AR-1262-2

R.T.: 7.733 min  
 Delta R.T.: -0.011 min  
 Response: 515726  
 Conc: 344.77 ng/ml



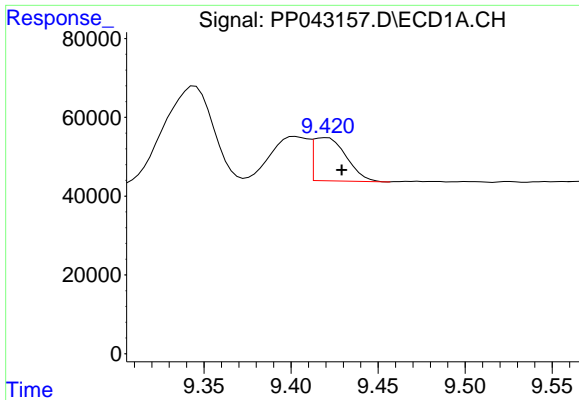
#38 AR-1262-3

R.T.: 9.345 min  
 Delta R.T.: 0.000 min  
 Response: 434879  
 Conc: 471.81 ng/ml



#38 AR-1262-3

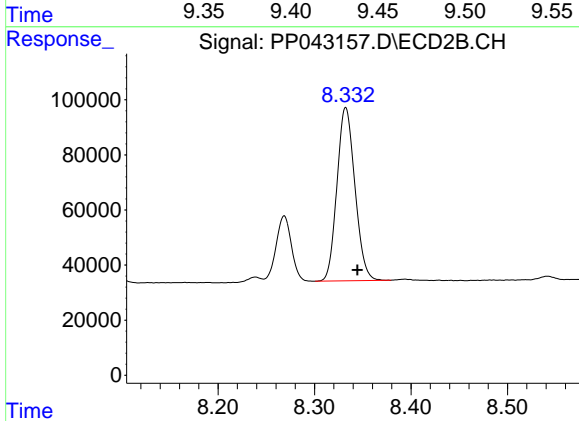
R.T.: 8.269 min  
 Delta R.T.: -0.011 min  
 Response: 254819  
 Conc: 228.40 ng/ml



#39 AR-1262-4

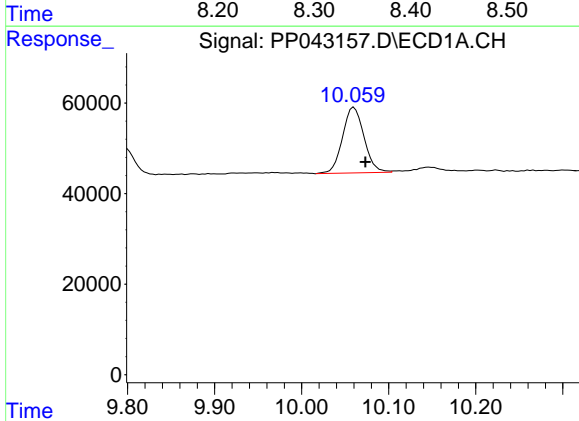
R.T.: 9.420 min  
 Delta R.T.: -0.009 min  
 Response: 144253  
 Conc: 267.42 ng/ml

Instrument :  
 ECD\_P  
 ClientSampleId :



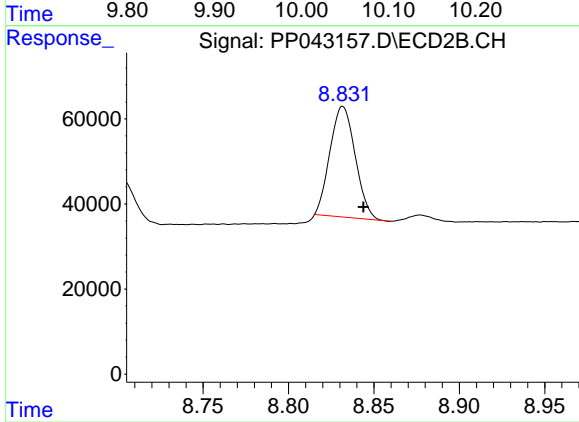
#39 AR-1262-4

R.T.: 8.332 min  
 Delta R.T.: -0.012 min  
 Response: 815819  
 Conc: 400.19 ng/ml



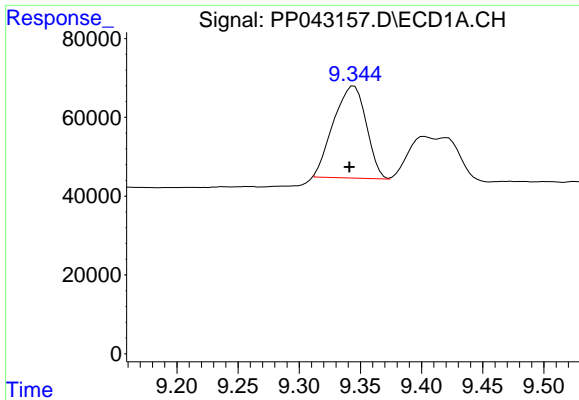
#40 AR-1262-5

R.T.: 10.060 min  
 Delta R.T.: -0.013 min  
 Response: 249116  
 Conc: 409.97 ng/ml



#40 AR-1262-5

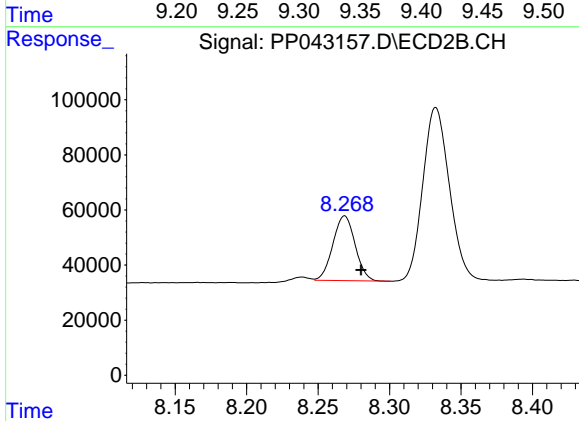
R.T.: 8.832 min  
 Delta R.T.: -0.012 min  
 Response: 267489  
 Conc: 288.46 ng/ml



#41 AR-1268-1

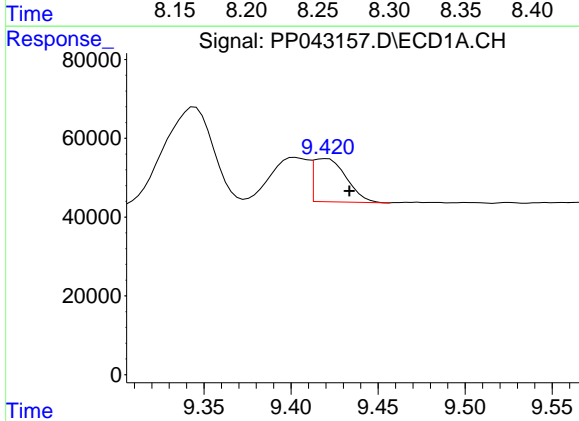
R.T.: 9.345 min  
 Delta R.T.: 0.004 min  
 Response: 434879  
 Conc: 210.94 ng/ml

Instrument :  
 ECD\_P  
 ClientSampleId :



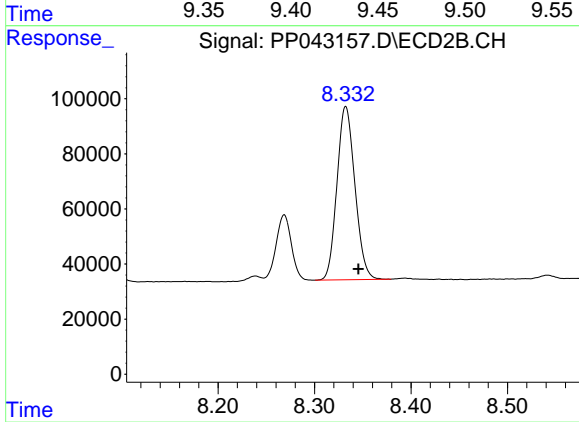
#41 AR-1268-1

R.T.: 8.269 min  
 Delta R.T.: -0.012 min  
 Response: 254819  
 Conc: 82.68 ng/ml



#42 AR-1268-2

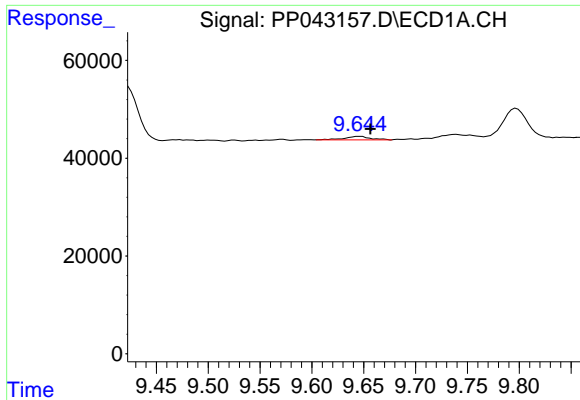
R.T.: 9.420 min  
 Delta R.T.: -0.013 min  
 Response: 144253  
 Conc: 75.53 ng/ml



#42 AR-1268-2

R.T.: 8.332 min  
 Delta R.T.: -0.013 min  
 Response: 815819  
 Conc: 286.84 ng/ml

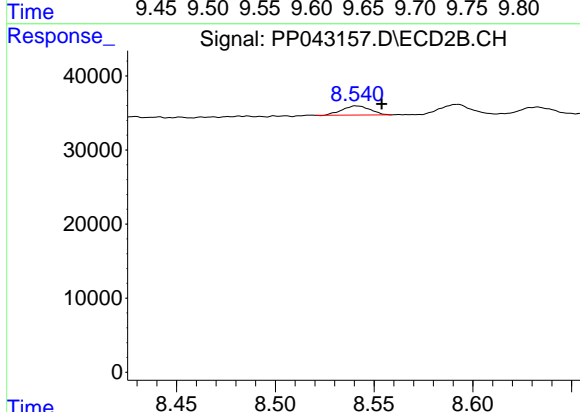




#43 AR-1268-3

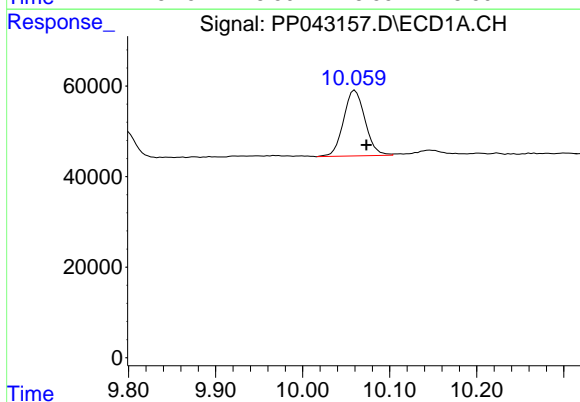
R.T.: 9.646 min  
 Delta R.T.: -0.010 min  
 Response: 12947  
 Conc: 7.69 ng/ml

Instrument :  
 ECD\_P  
 ClientSampleId :



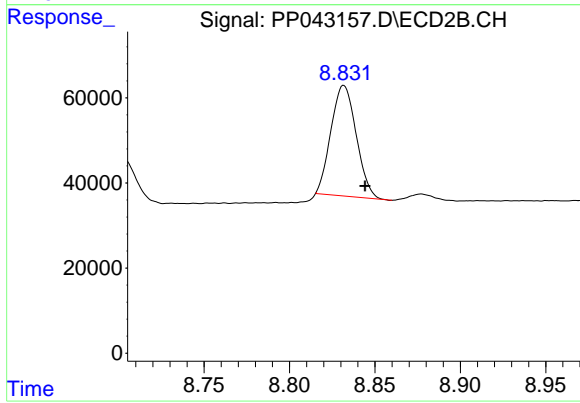
#43 AR-1268-3

R.T.: 8.541 min  
 Delta R.T.: -0.013 min  
 Response: 12160  
 Conc: 5.10 ng/ml



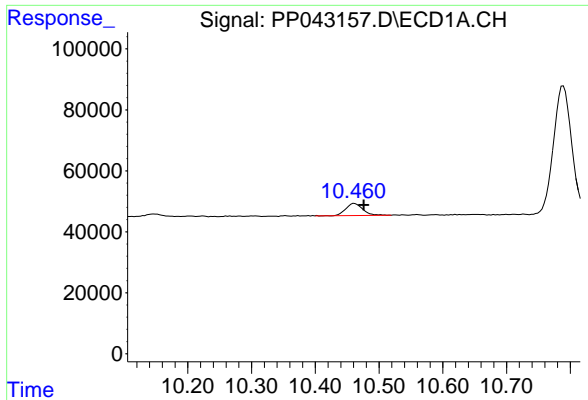
#44 AR-1268-4

R.T.: 10.060 min  
 Delta R.T.: -0.013 min  
 Response: 249116  
 Conc: 394.23 ng/ml



#44 AR-1268-4

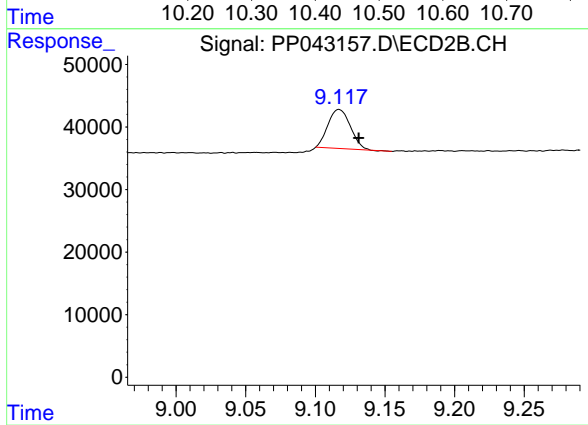
R.T.: 8.832 min  
 Delta R.T.: -0.012 min  
 Response: 267489  
 Conc: 262.31 ng/ml



#45 AR-1268-5

R.T.: 10.461 min  
Delta R.T.: -0.015 min  
Response: 71771  
Conc: 13.47 ng/ml

Instrument :  
ECD\_P  
ClientSampleId :



#45 AR-1268-5

R.T.: 9.117 min  
Delta R.T.: -0.014 min  
Response: 69939  
Conc: 9.85 ng/ml