

Data Path : Z:\pestpcbsrv\HPCHEM1\ECD_P\Data\PP012025\
 Data File : PP069216.D
 Signal(s) : Signal #1: ECD1A.ch Signal #2: ECD2B.ch
 Acq On : 20 Jan 2025 09:32
 Operator : YP\AJ
 Sample : AR1248CCC500
 Misc :
 ALS Vial : 5 Sample Multiplier: 1

Instrument :
 ECD_P
 ClientSampleId :
 AR1248CCC500

Integration File signal 1: autoint1.e
 Integration File signal 2: autoint2.e
 Quant Time: Jan 20 10:27:44 2025
 Quant Method : Z:\pestpcbsrv\HPCHEM1\ECD_P\methods\PP010625.M
 Quant Title : GC EXTRACTABLES
 QLast Update : Tue Jan 07 11:05:55 2025
 Response via : Initial Calibration
 Integrator: ChemStation

Volume Inj. : 2 µl
 Signal #1 Phase : ZB-MR1 Signal #2 Phase: ZB-MR2
 Signal #1 Info : 30Mx0.32mmx 0.50µ Signal #2 Info : 30M x 0.32mm x 0.25µm

Compound	RT#1	RT#2	Resp#1	Resp#2	ng/ml	ng/ml
System Monitoring Compounds						
1) SA Tetrachlo...	4.667	3.980	70334273	48867900	50.553	50.061
2) SA Decachlor...	10.509	9.100	52579624	53115299	47.095	44.214
Target Compounds						
3) L1 AR-1016-1	5.827	5.079	14419680	11755741	321.610	347.467
4) L1 AR-1016-2	5.849	5.099	17442695	11805884	259.511	234.558
5) L1 AR-1016-3	5.912	5.280	8509057	8030435	201.691	296.362 #
6) L1 AR-1016-4	6.009	5.318	9869651	16450448	282.114	667.609 #
7) L1 AR-1016-5	6.304	5.536	23077629	19387871	667.153	642.071
8) L2 AR-1221-1	0.000	4.189	0	214268	N.D.	15.882 #
9) L2 AR-1221-2	4.972	4.285	1296904	913284	100.755	88.000
10) L2 AR-1221-3	5.032	4.358	1357624	957074	35.019	30.824
11) L3 AR-1232-1	5.032	4.358	1357624	957074	45.738	38.857
12) L3 AR-1232-2	5.561	5.099	6909232	11805884	411.038	493.585
13) L3 AR-1232-3	5.849	5.280	17442695	8030435	556.614	639.357
14) L3 AR-1232-4	6.009	5.362	9869651	16765878	630.922	1398.094 #
15) L3 AR-1232-5	6.100	5.536	21016125	19387871	1744.809	1510.408
16) L4 AR-1242-1	5.827	5.079	14419680	11755741	389.074	400.576
17) L4 AR-1242-2	5.849	5.099	17442695	11805884	304.058	280.409
18) L4 AR-1242-3	5.912	5.280	8509057	8030435	247.321	345.139 #
19) L4 AR-1242-4	6.009	5.362	9869651	16765878	343.223	688.011 #
20) L4 AR-1242-5	6.743	5.890	25078283	26604480	799.095	916.336
21) L5 AR-1248-1	5.827	5.079	14419680	11755741	490.005	511.138
22) L5 AR-1248-2	6.100	5.318	21016125	16450448	487.377	481.830
23) L5 AR-1248-3	6.304	5.362	23077629	16765878	489.166	474.512
24) L5 AR-1248-4	6.703	5.536	25754741	19387871	479.597	471.017
25) L5 AR-1248-5	6.743	5.932	25078283	18608673	482.115	481.016
26) L6 AR-1254-1	6.678	5.890	18887115	26604480	354.672	442.437
27) L6 AR-1254-2	6.900	6.038	24885312	8581958	306.069	160.414 #
28) L6 AR-1254-3	7.261	6.446	13702427	12314893	170.052	149.596
29) L6 AR-1254-4	7.544	6.675	10103726	8395303	165.909	186.562
30) L6 AR-1254-5	7.962	7.094	2425189	2377961	37.945	31.872
31) L7 AR-1260-1	7.428	6.593	1734658	4498637	27.651	78.518 #
32) L7 AR-1260-2	7.677	6.764	2316407	1007528	30.588	15.294 #
33) L7 AR-1260-3	0.000	6.919	0	1218436	N.D.	18.925 #
34) L7 AR-1260-4	8.254	7.393	1038456	165335	15.684	2.952 #
35) L7 AR-1260-5	8.602	7.634	602849	308467	4.817	2.512 #
36) L8 AR-1262-1	8.254	7.167	1038456	394001	13.123	4.934 #
37) L8 AR-1262-2	8.602	7.393	602849	165335	4.174	2.364 #
38) L8 AR-1262-3	0.000	7.915	0	112766	N.D.	1.958 #
39) L8 AR-1262-4	0.000	7.981	0	340073	N.D.	3.373 #
40) L8 AR-1262-5	0.000	8.497	0	32312	N.D.	0.662 #
41) L9 AR-1268-1	0.000	7.915	0	112766	N.D.	0.695 #

Data Path : Z:\pestpcbsrv\HPCHEM1\ECD_P\Data\PP012025\
 Data File : PP069216.D
 Signal(s) : Signal #1: ECD1A.ch Signal #2: ECD2B.ch
 Acq On : 20 Jan 2025 09:32
 Operator : YP\AJ
 Sample : AR1248CCC500
 Misc :
 ALS Vial : 5 Sample Multiplier: 1

Instrument :
 ECD_P
 ClientSampleId :
 AR1248CCC500

Integration File signal 1: autoint1.e
 Integration File signal 2: autoint2.e
 Quant Time: Jan 20 10:27:44 2025
 Quant Method : Z:\pestpcbsrv\HPCHEM1\ECD_P\methods\PP010625.M
 Quant Title : GC EXTRACTABLES
 QLast Update : Tue Jan 07 11:05:55 2025
 Response via : Initial Calibration
 Integrator: ChemStation

Volume Inj. : 2 µl
 Signal #1 Phase : ZB-MR1 Signal #2 Phase: ZB-MR2
 Signal #1 Info : 30Mx0.32mmx 0.50µ Signal #2 Info : 30M x 0.32mm x 0.25µm

	Compound	RT#1	RT#2	Resp#1	Resp#2	ng/ml	ng/ml
42)	L9 AR-1268-2	0.000	7.981	0	340073	N.D.	2.298 #
43)	L9 AR-1268-3	0.000	8.196	0	282756	N.D.	2.128 #
44)	L9 AR-1268-4	0.000	8.497	0	32312	N.D.	0.607 #
45)	L9 AR-1268-5	0.000	8.818	0	525816	N.D.	1.349 #

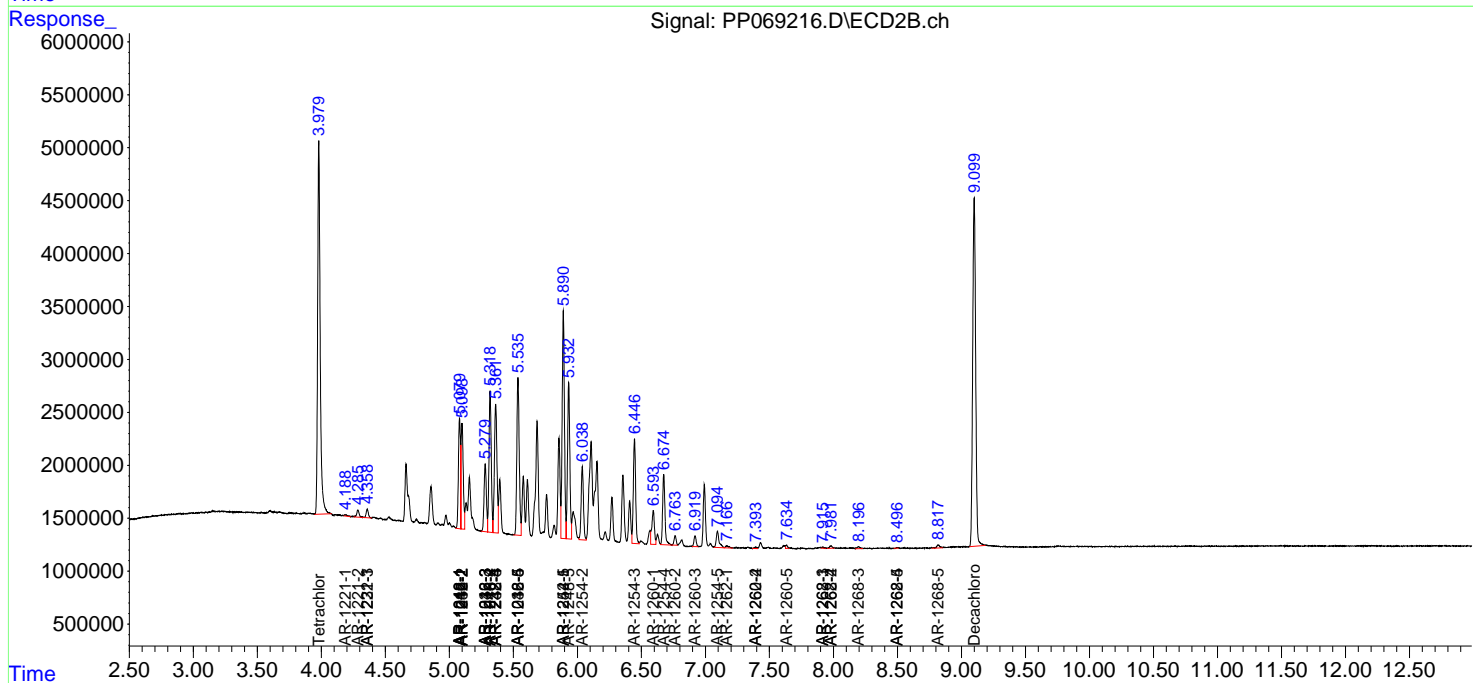
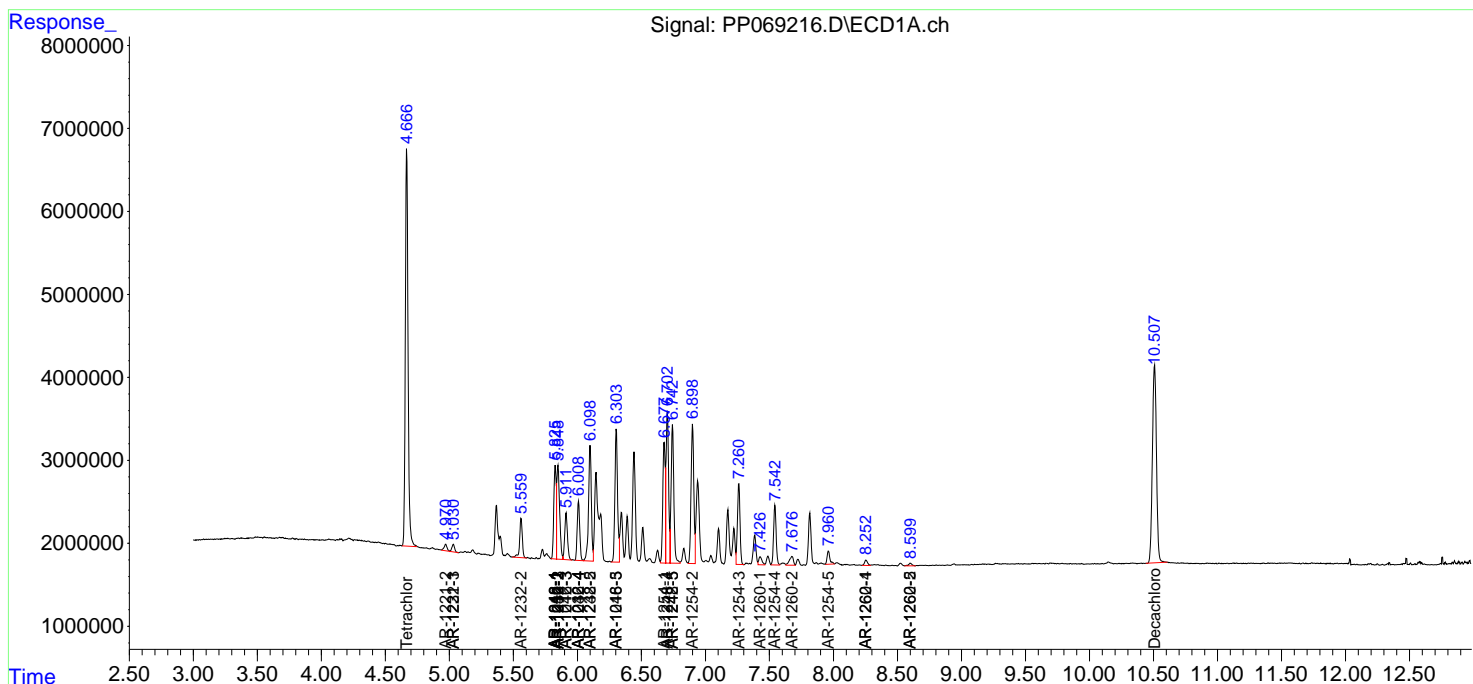
(f)=RT Delta > 1/2 Window (#)=Amounts differ by > 25% (m)=manual int.

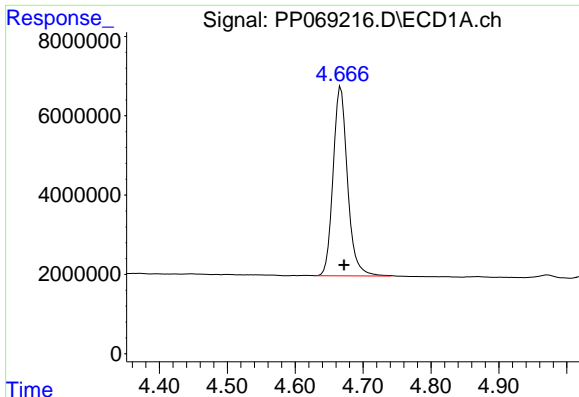
Data Path : Z:\pestpcbsrv\HPCHEM1\ECD_P\Data\PP012025\
 Data File : PP069216.D
 Signal(s) : Signal #1: ECD1A.ch Signal #2: ECD2B.ch
 Acq On : 20 Jan 2025 09:32
 Operator : YP\AJ
 Sample : AR1248CCC500
 Misc :
 ALS Vial : 5 Sample Multiplier: 1

Instrument :
 ECD_P
 ClientSampleId :
 AR1248CCC500

Integration File signal 1: autoint1.e
 Integration File signal 2: autoint2.e
 Quant Time: Jan 20 10:27:44 2025
 Quant Method : Z:\pestpcbsrv\HPCHEM1\ECD_P\methods\PP010625.M
 Quant Title : GC EXTRACTABLES
 QLast Update : Tue Jan 07 11:05:55 2025
 Response via : Initial Calibration
 Integrator: ChemStation

Volume Inj. : 2 µl
 Signal #1 Phase : ZB-MR1 Signal #2 Phase: ZB-MR2
 Signal #1 Info : 30Mx0.32mmx 0.50µ Signal #2 Info : 30M x 0.32mm x 0.25µm

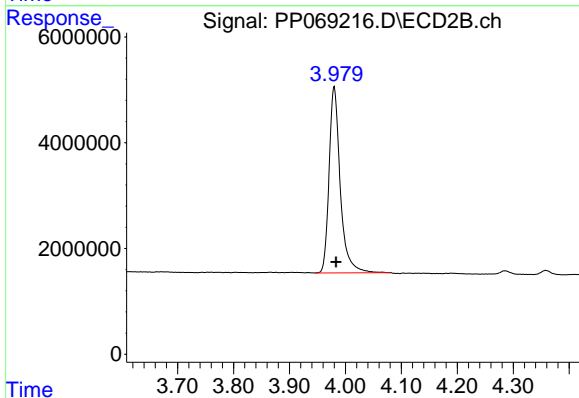




#1 Tetrachloro-m-xylene

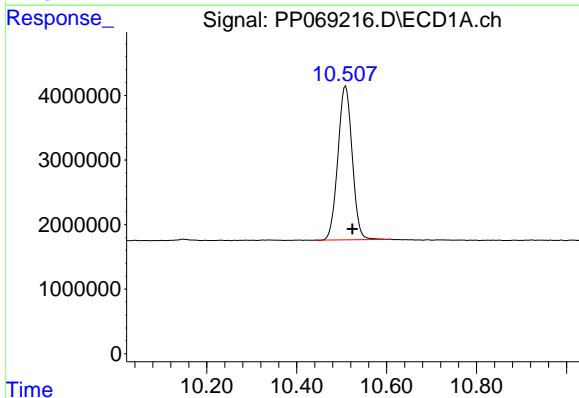
R.T.: 4.667 min
 Delta R.T.: -0.005 min
 Response: 70334273
 Conc: 50.55 ng/ml

Instrument :
 ECD_P
 ClientSampleId :
 AR1248CCC500



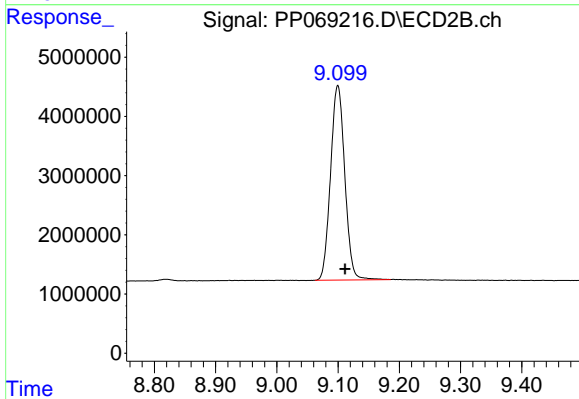
#1 Tetrachloro-m-xylene

R.T.: 3.980 min
 Delta R.T.: -0.003 min
 Response: 48867900
 Conc: 50.06 ng/ml



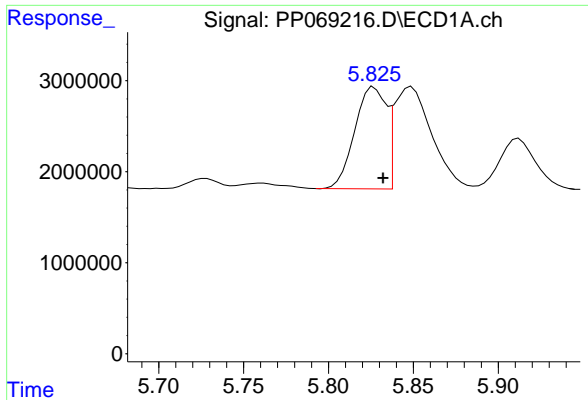
#2 Decachlorobiphenyl

R.T.: 10.509 min
 Delta R.T.: -0.015 min
 Response: 52579624
 Conc: 47.09 ng/ml



#2 Decachlorobiphenyl

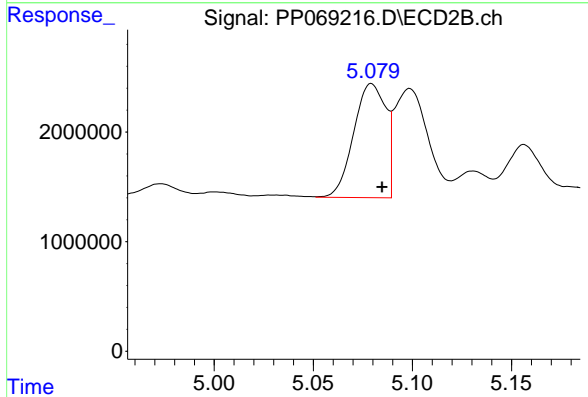
R.T.: 9.100 min
 Delta R.T.: -0.012 min
 Response: 53115299
 Conc: 44.21 ng/ml



#3 AR-1016-1

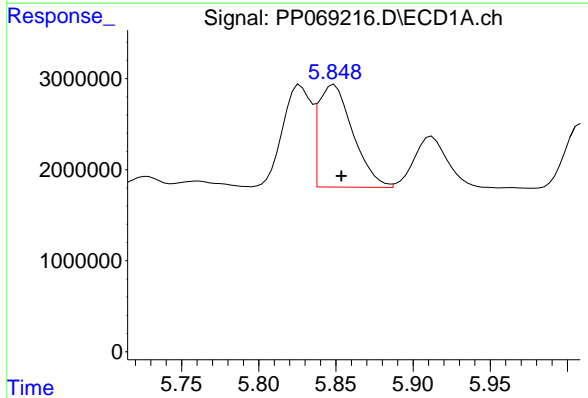
R.T.: 5.827 min
 Delta R.T.: -0.005 min
 Response: 14419680
 Conc: 321.61 ng/ml

Instrument :
 ECD_P
 ClientSampleId :
 AR1248CCC500



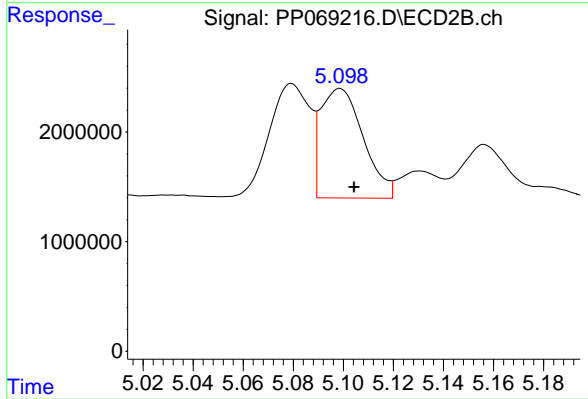
#3 AR-1016-1

R.T.: 5.079 min
 Delta R.T.: -0.005 min
 Response: 11755741
 Conc: 347.47 ng/ml



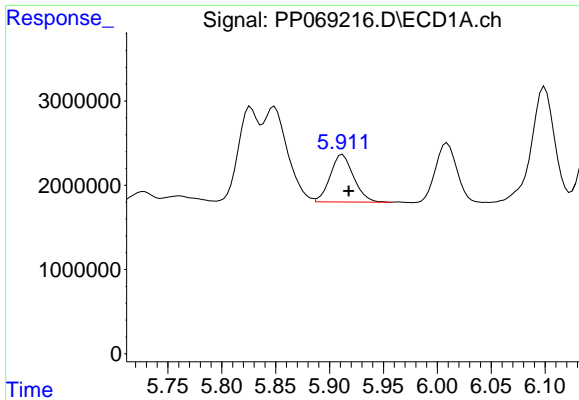
#4 AR-1016-2

R.T.: 5.849 min
 Delta R.T.: -0.005 min
 Response: 17442695
 Conc: 259.51 ng/ml



#4 AR-1016-2

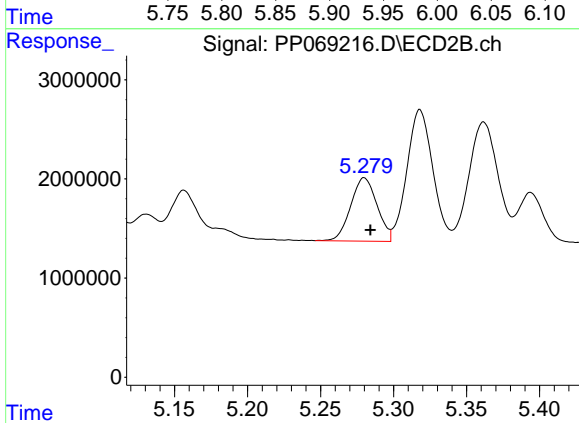
R.T.: 5.099 min
 Delta R.T.: -0.006 min
 Response: 11805884
 Conc: 234.56 ng/ml



#5 AR-1016-3

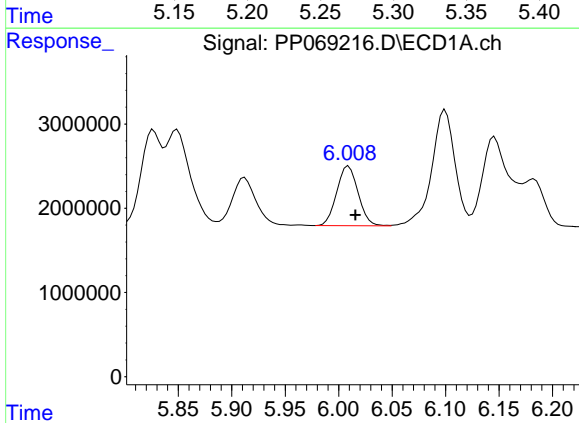
R.T.: 5.912 min
 Delta R.T.: -0.006 min
 Response: 8509057
 Conc: 201.69 ng/ml

Instrument :
 ECD_P
 ClientSampleId :
 AR1248CCC500



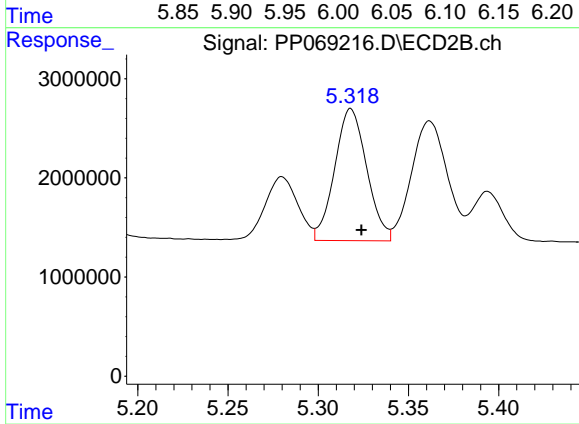
#5 AR-1016-3

R.T.: 5.280 min
 Delta R.T.: -0.004 min
 Response: 8030435
 Conc: 296.36 ng/ml



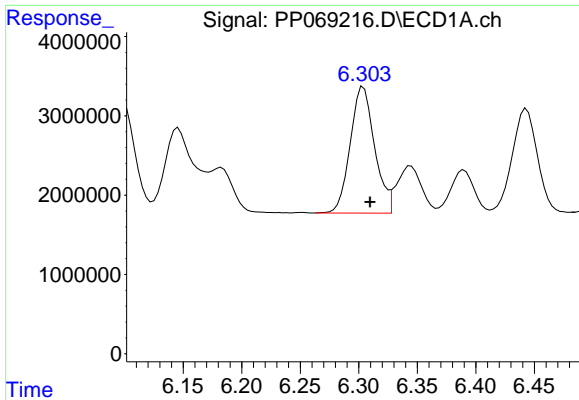
#6 AR-1016-4

R.T.: 6.009 min
 Delta R.T.: -0.006 min
 Response: 9869651
 Conc: 282.11 ng/ml



#6 AR-1016-4

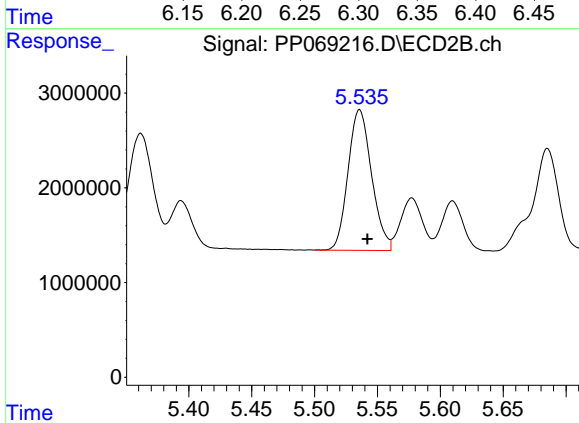
R.T.: 5.318 min
 Delta R.T.: -0.006 min
 Response: 16450448
 Conc: 667.61 ng/ml



#7 AR-1016-5

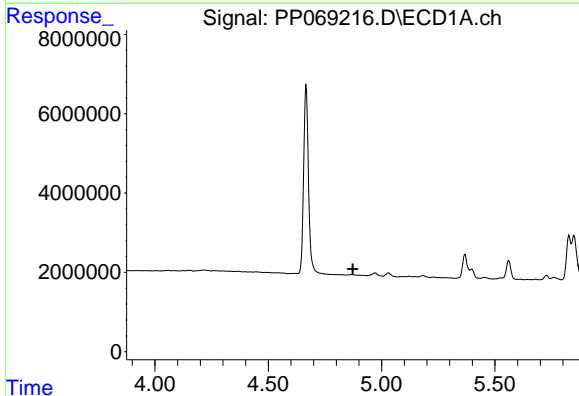
R.T.: 6.304 min
 Delta R.T.: -0.006 min
 Response: 23077629
 Conc: 667.15 ng/ml

Instrument :
 ECD_P
 ClientSampleId :
 AR1248CCC500



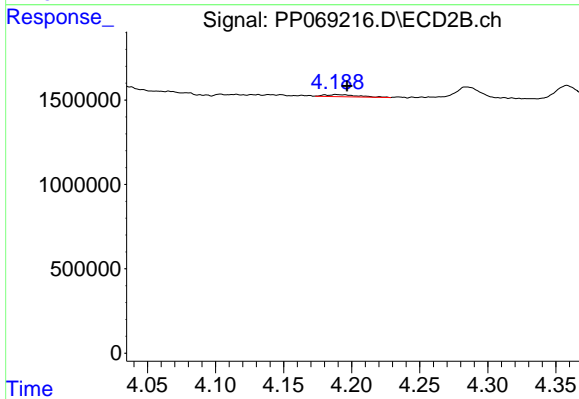
#7 AR-1016-5

R.T.: 5.536 min
 Delta R.T.: -0.006 min
 Response: 19387871
 Conc: 642.07 ng/ml



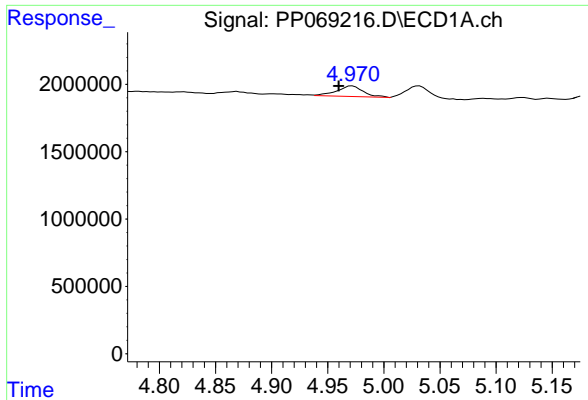
#8 AR-1221-1

R.T.: 0.000 min
 Exp R.T. : 4.873 min
 Response: 0
 Conc: N.D.



#8 AR-1221-1

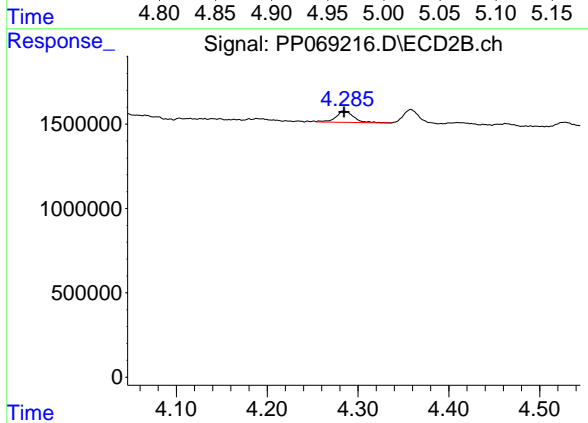
R.T.: 4.189 min
 Delta R.T.: -0.008 min
 Response: 214268
 Conc: 15.88 ng/ml



#9 AR-1221-2

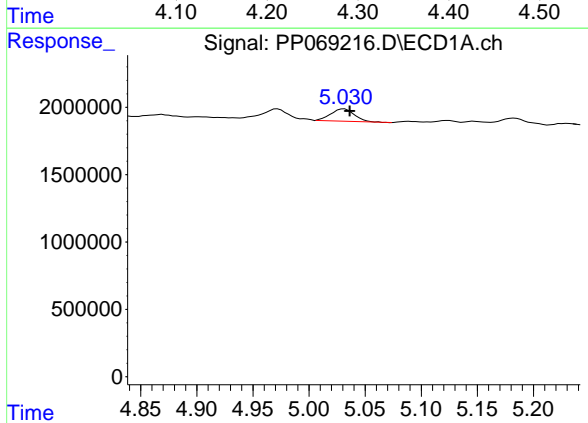
R.T.: 4.972 min
 Delta R.T.: 0.012 min
 Response: 1296904
 Conc: 100.75 ng/ml

Instrument :
 ECD_P
 ClientSampleId :
 AR1248CCC500



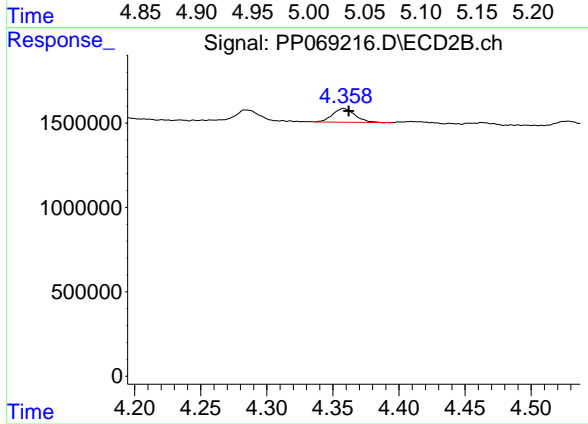
#9 AR-1221-2

R.T.: 4.285 min
 Delta R.T.: 0.000 min
 Response: 913284
 Conc: 88.00 ng/ml



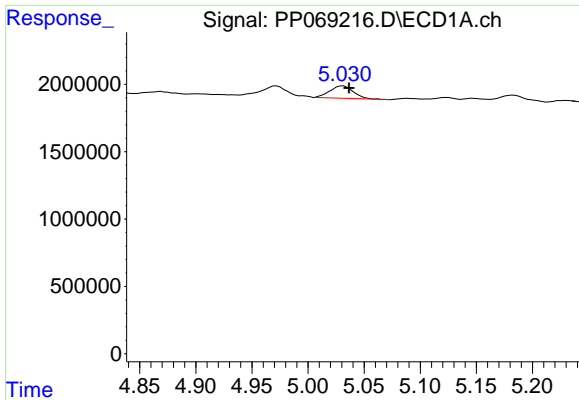
#10 AR-1221-3

R.T.: 5.032 min
 Delta R.T.: -0.005 min
 Response: 1357624
 Conc: 35.02 ng/ml



#10 AR-1221-3

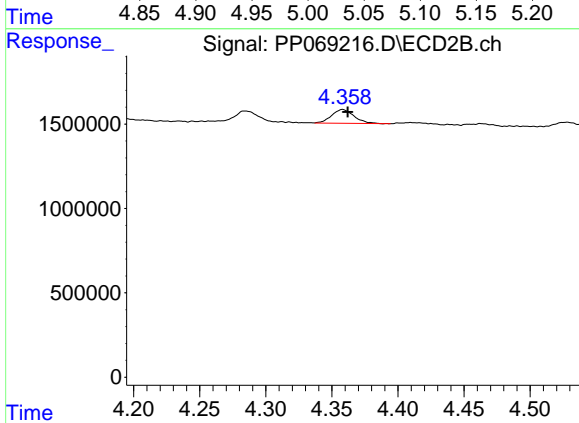
R.T.: 4.358 min
 Delta R.T.: -0.004 min
 Response: 957074
 Conc: 30.82 ng/ml



#11 AR-1232-1

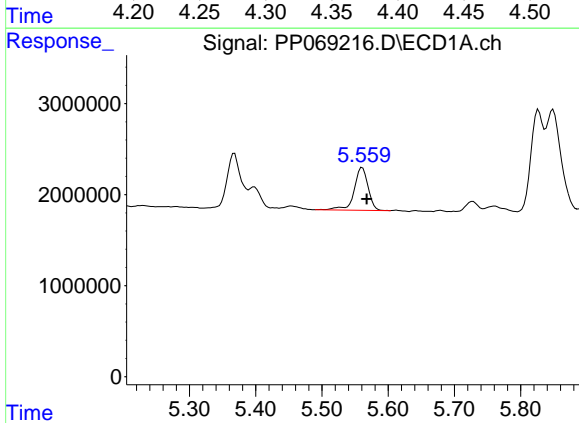
R.T.: 5.032 min
 Delta R.T.: -0.005 min
 Response: 1357624
 Conc: 45.74 ng/ml

Instrument :
 ECD_P
 ClientSampleId :
 AR1248CCC500



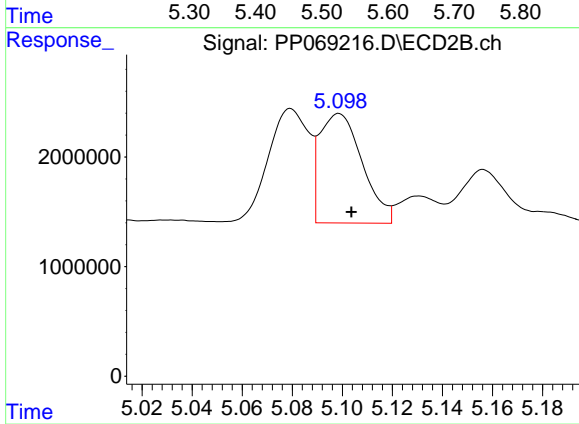
#11 AR-1232-1

R.T.: 4.358 min
 Delta R.T.: -0.004 min
 Response: 957074
 Conc: 38.86 ng/ml



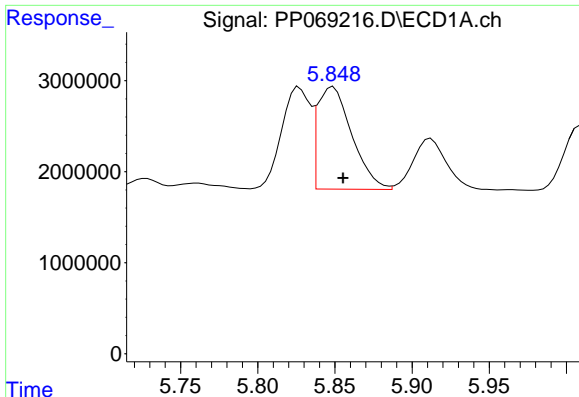
#12 AR-1232-2

R.T.: 5.561 min
 Delta R.T.: -0.007 min
 Response: 6909232
 Conc: 411.04 ng/ml



#12 AR-1232-2

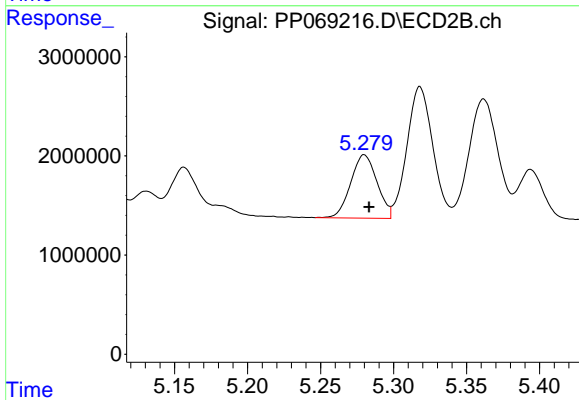
R.T.: 5.099 min
 Delta R.T.: -0.005 min
 Response: 11805884
 Conc: 493.58 ng/ml



#13 AR-1232-3

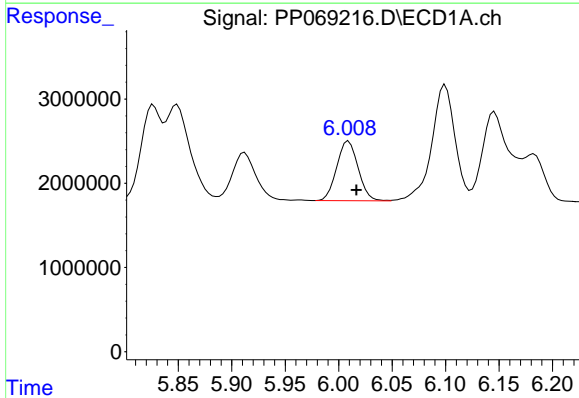
R.T.: 5.849 min
 Delta R.T.: -0.006 min
 Response: 17442695
 Conc: 556.61 ng/ml

Instrument :
 ECD_P
 ClientSampleId :
 AR1248CCC500



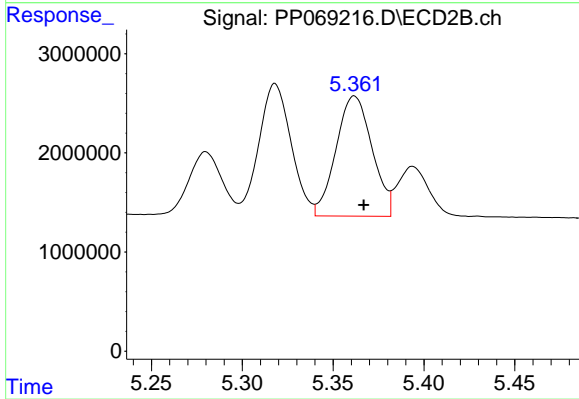
#13 AR-1232-3

R.T.: 5.280 min
 Delta R.T.: -0.003 min
 Response: 8030435
 Conc: 639.36 ng/ml



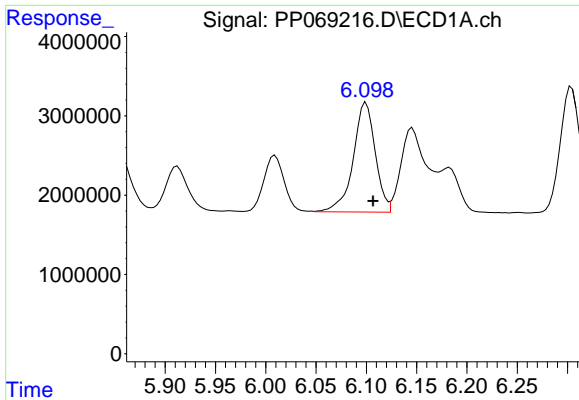
#14 AR-1232-4

R.T.: 6.009 min
 Delta R.T.: -0.007 min
 Response: 9869651
 Conc: 630.92 ng/ml



#14 AR-1232-4

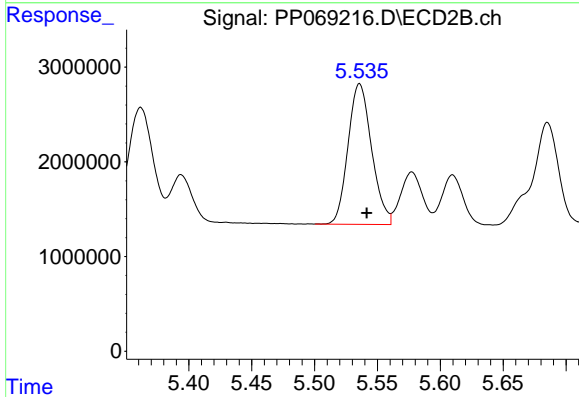
R.T.: 5.362 min
 Delta R.T.: -0.005 min
 Response: 16765878
 Conc: 1398.09 ng/ml



#15 AR-1232-5

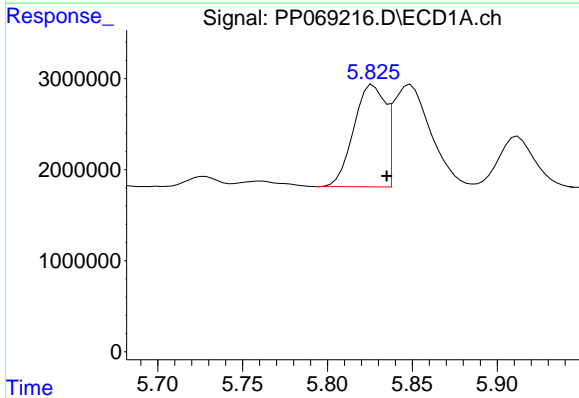
R.T.: 6.100 min
 Delta R.T.: -0.007 min
 Response: 21016125
 Conc: 1744.81 ng/ml

Instrument :
 ECD_P
 ClientSampleId :
 AR1248CCC500



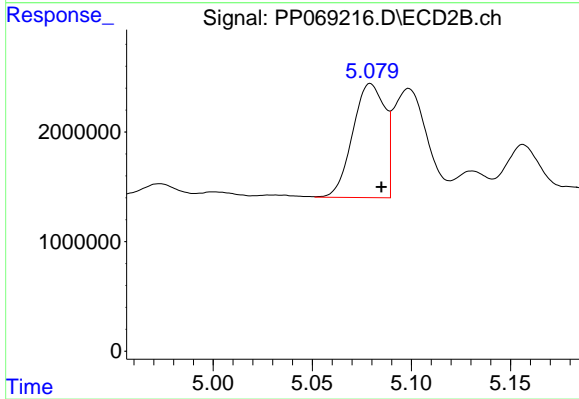
#15 AR-1232-5

R.T.: 5.536 min
 Delta R.T.: -0.006 min
 Response: 19387871
 Conc: 1510.41 ng/ml



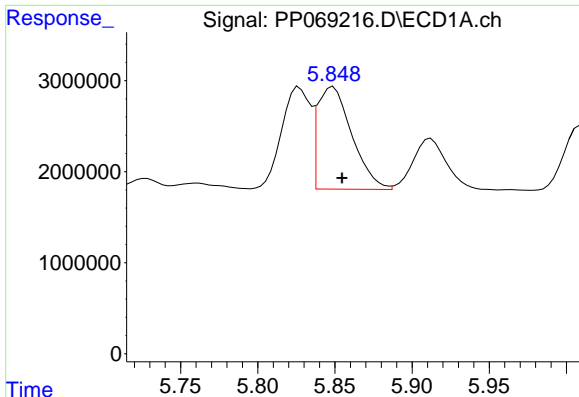
#16 AR-1242-1

R.T.: 5.827 min
 Delta R.T.: -0.008 min
 Response: 14419680
 Conc: 389.07 ng/ml



#16 AR-1242-1

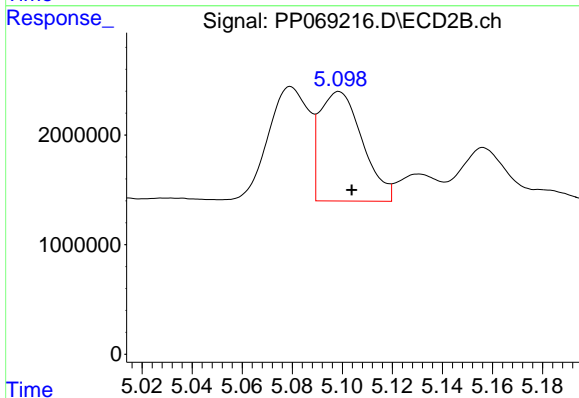
R.T.: 5.079 min
 Delta R.T.: -0.005 min
 Response: 11755741
 Conc: 400.58 ng/ml



#17 AR-1242-2

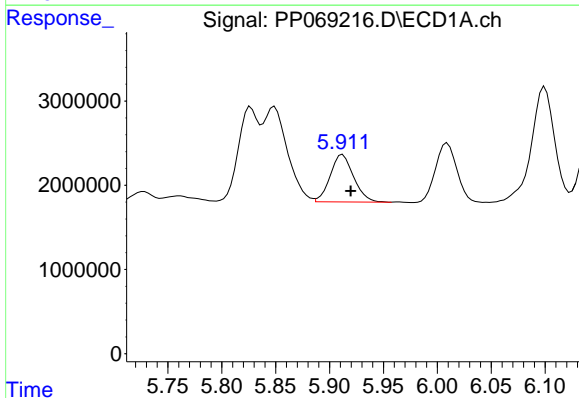
R.T.: 5.849 min
 Delta R.T.: -0.006 min
 Response: 17442695
 Conc: 304.06 ng/ml

Instrument :
 ECD_P
 ClientSampleId :
 AR1248CCC500



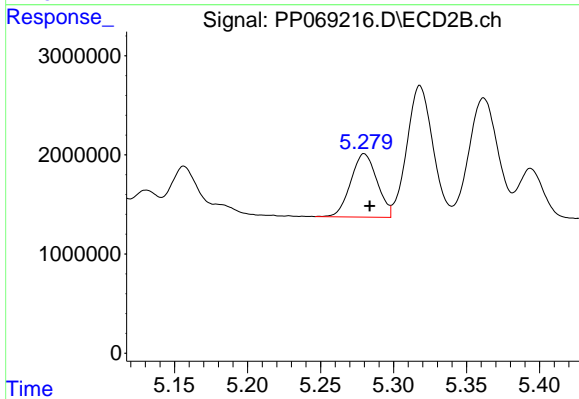
#17 AR-1242-2

R.T.: 5.099 min
 Delta R.T.: -0.005 min
 Response: 11805884
 Conc: 280.41 ng/ml



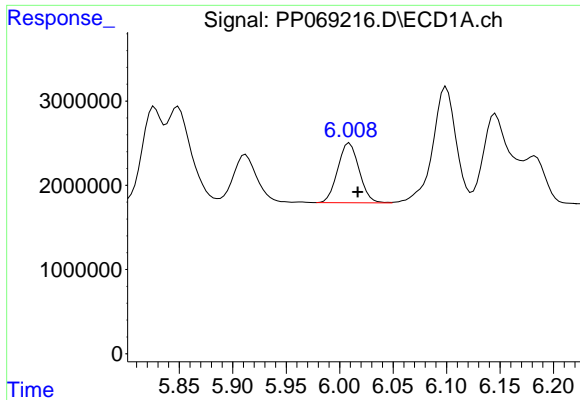
#18 AR-1242-3

R.T.: 5.912 min
 Delta R.T.: -0.008 min
 Response: 8509057
 Conc: 247.32 ng/ml



#18 AR-1242-3

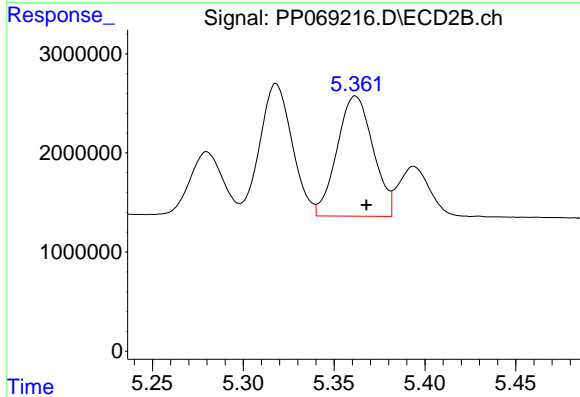
R.T.: 5.280 min
 Delta R.T.: -0.004 min
 Response: 8030435
 Conc: 345.14 ng/ml



#19 AR-1242-4

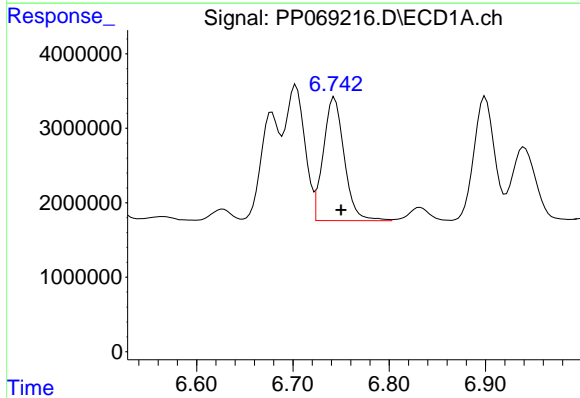
R.T.: 6.009 min
 Delta R.T.: -0.008 min
 Response: 9869651
 Conc: 343.22 ng/ml

Instrument :
 ECD_P
 ClientSampleId :
 AR1248CCC500



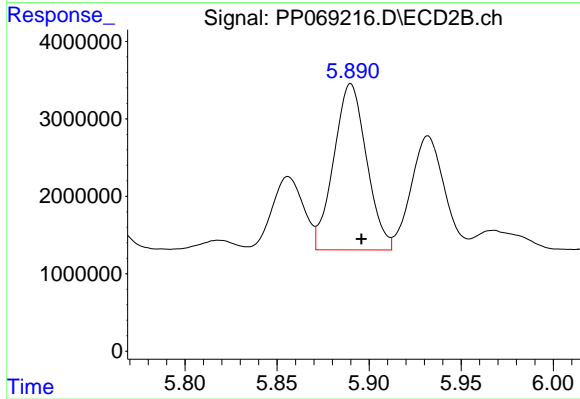
#19 AR-1242-4

R.T.: 5.362 min
 Delta R.T.: -0.006 min
 Response: 16765878
 Conc: 688.01 ng/ml



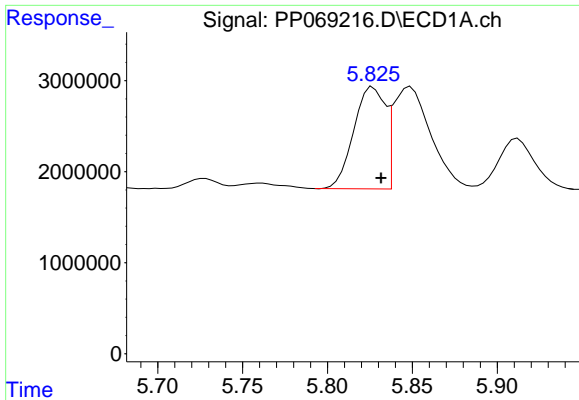
#20 AR-1242-5

R.T.: 6.743 min
 Delta R.T.: -0.007 min
 Response: 25078283
 Conc: 799.09 ng/ml



#20 AR-1242-5

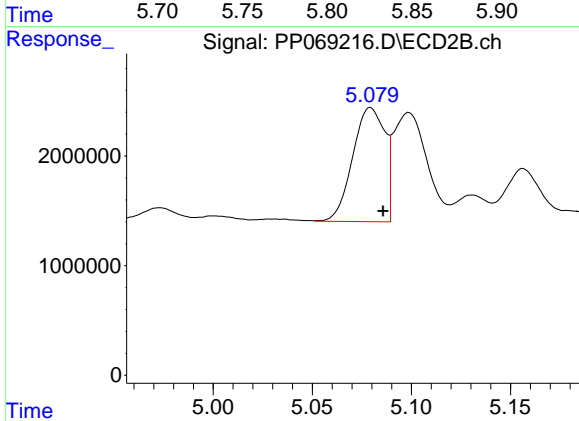
R.T.: 5.890 min
 Delta R.T.: -0.006 min
 Response: 26604480
 Conc: 916.34 ng/ml



#21 AR-1248-1

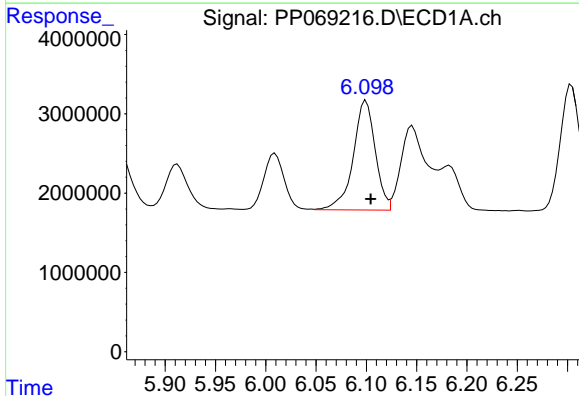
R.T.: 5.827 min
 Delta R.T.: -0.005 min
 Response: 14419680
 Conc: 490.00 ng/ml

Instrument :
 ECD_P
 ClientSampleId :
 AR1248CCC500



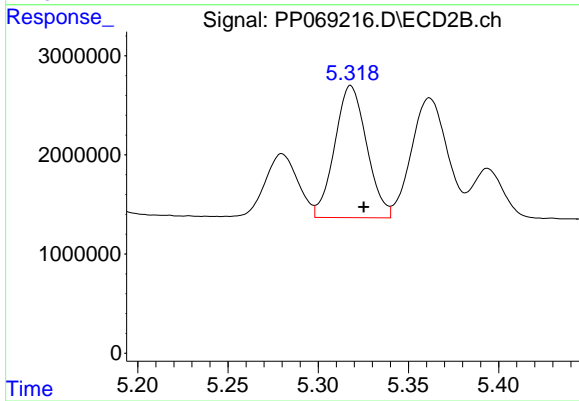
#21 AR-1248-1

R.T.: 5.079 min
 Delta R.T.: -0.006 min
 Response: 11755741
 Conc: 511.14 ng/ml



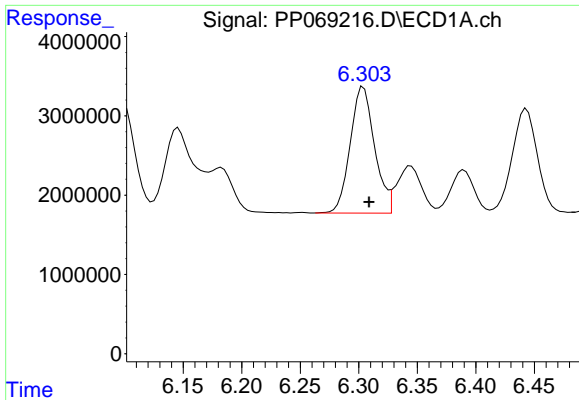
#22 AR-1248-2

R.T.: 6.100 min
 Delta R.T.: -0.005 min
 Response: 21016125
 Conc: 487.38 ng/ml



#22 AR-1248-2

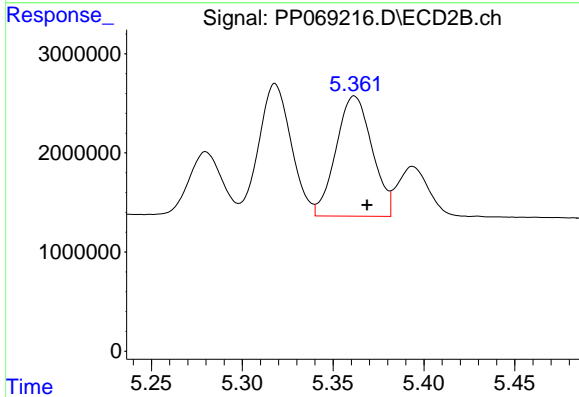
R.T.: 5.318 min
 Delta R.T.: -0.007 min
 Response: 16450448
 Conc: 481.83 ng/ml



#23 AR-1248-3

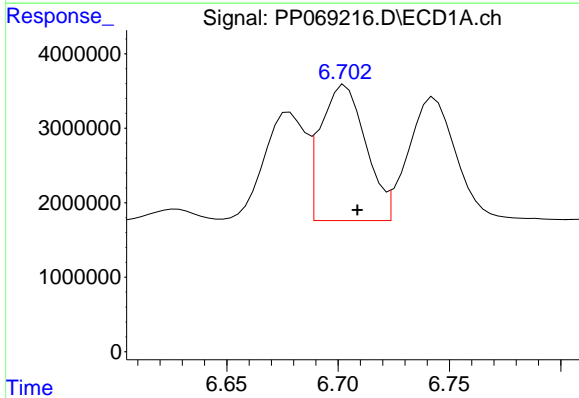
R.T.: 6.304 min
 Delta R.T.: -0.005 min
 Response: 23077629
 Conc: 489.17 ng/ml

Instrument :
 ECD_P
 ClientSampleId :
 AR1248CCC500



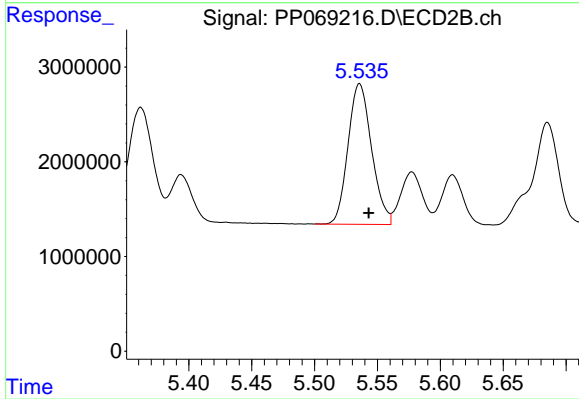
#23 AR-1248-3

R.T.: 5.362 min
 Delta R.T.: -0.007 min
 Response: 16765878
 Conc: 474.51 ng/ml



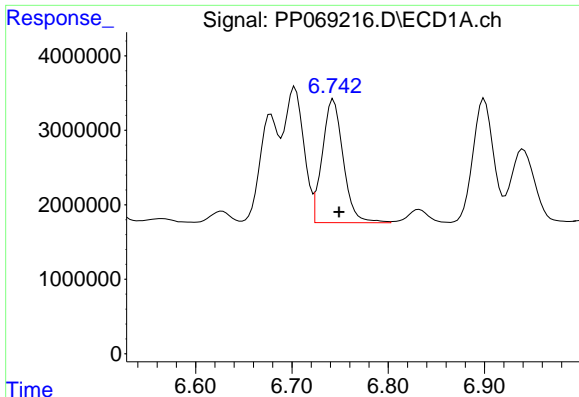
#24 AR-1248-4

R.T.: 6.703 min
 Delta R.T.: -0.005 min
 Response: 25754741
 Conc: 479.60 ng/ml



#24 AR-1248-4

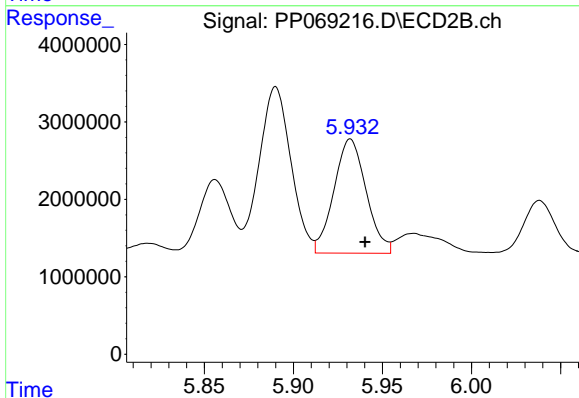
R.T.: 5.536 min
 Delta R.T.: -0.007 min
 Response: 19387871
 Conc: 471.02 ng/ml



#25 AR-1248-5

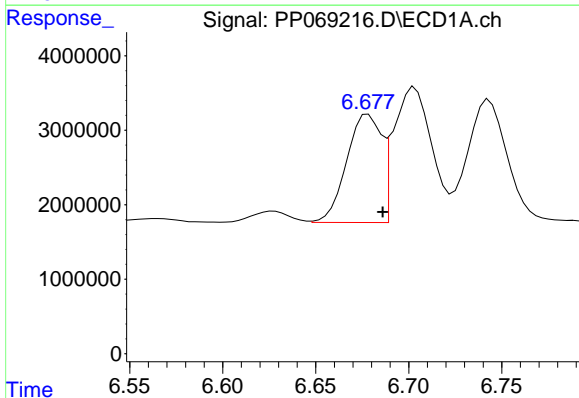
R.T.: 6.743 min
 Delta R.T.: -0.006 min
 Response: 25078283
 Conc: 482.11 ng/ml

Instrument :
 ECD_P
 ClientSampleId :
 AR1248CCC500



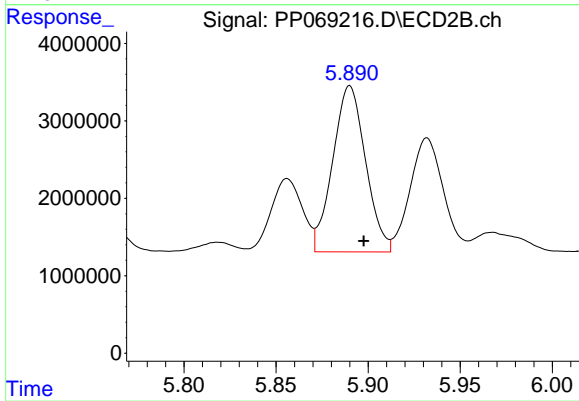
#25 AR-1248-5

R.T.: 5.932 min
 Delta R.T.: -0.008 min
 Response: 18608673
 Conc: 481.02 ng/ml



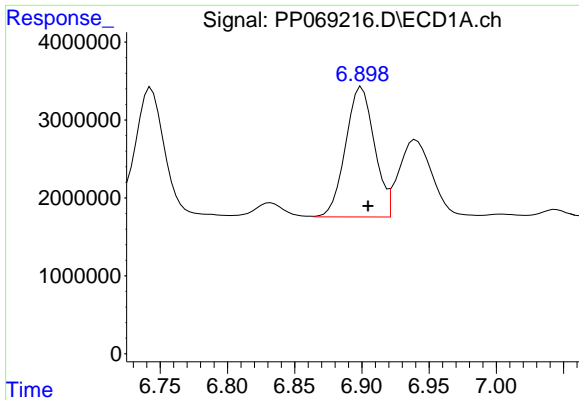
#26 AR-1254-1

R.T.: 6.678 min
 Delta R.T.: -0.008 min
 Response: 18887115
 Conc: 354.67 ng/ml



#26 AR-1254-1

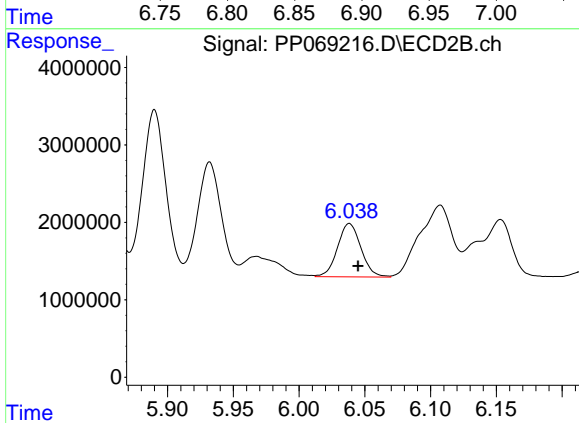
R.T.: 5.890 min
 Delta R.T.: -0.008 min
 Response: 26604480
 Conc: 442.44 ng/ml



#27 AR-1254-2

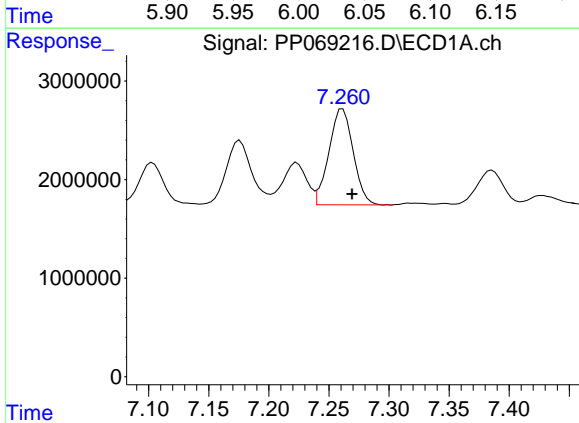
R.T.: 6.900 min
 Delta R.T.: -0.005 min
 Response: 24885312
 Conc: 306.07 ng/ml

Instrument :
 ECD_P
 ClientSampleId :
 AR1248CCC500



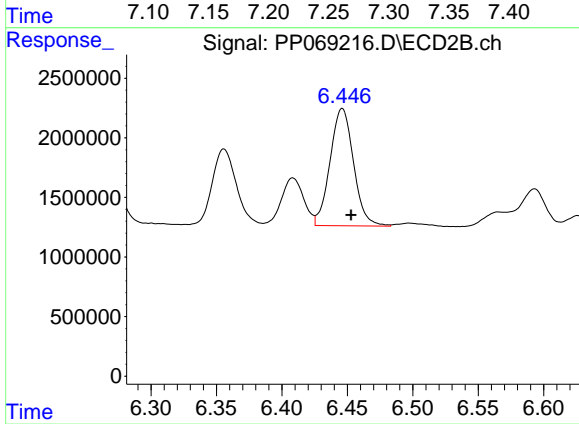
#27 AR-1254-2

R.T.: 6.038 min
 Delta R.T.: -0.007 min
 Response: 8581958
 Conc: 160.41 ng/ml



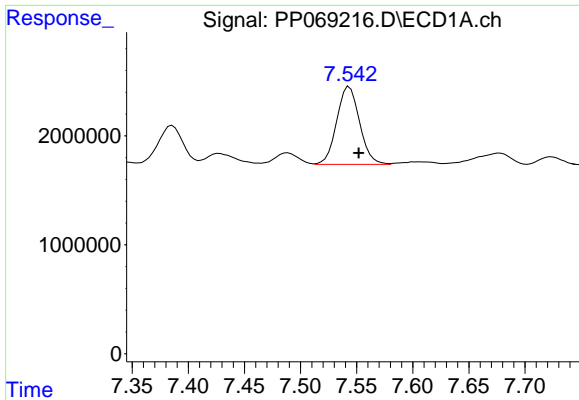
#28 AR-1254-3

R.T.: 7.261 min
 Delta R.T.: -0.008 min
 Response: 13702427
 Conc: 170.05 ng/ml



#28 AR-1254-3

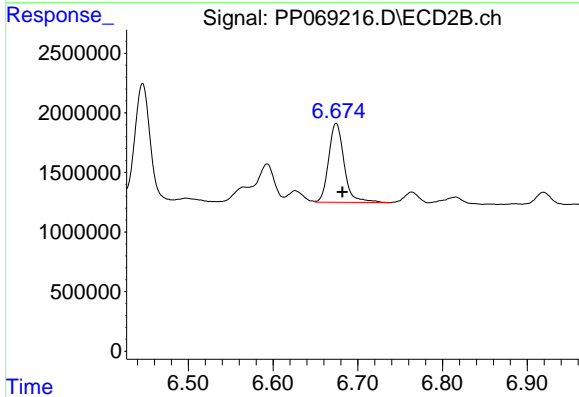
R.T.: 6.446 min
 Delta R.T.: -0.007 min
 Response: 12314893
 Conc: 149.60 ng/ml



#29 AR-1254-4

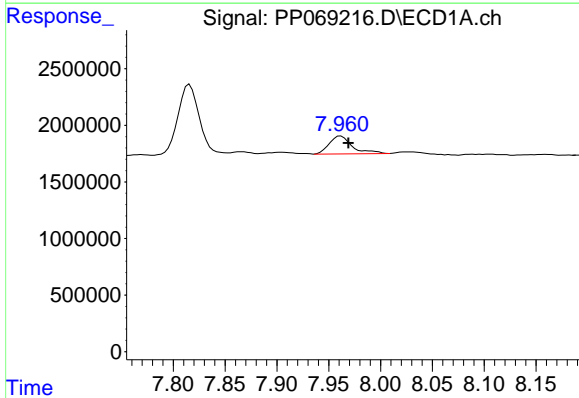
R.T.: 7.544 min
 Delta R.T.: -0.008 min
 Response: 10103726
 Conc: 165.91 ng/ml

Instrument :
 ECD_P
 ClientSampleId :
 AR1248CCC500



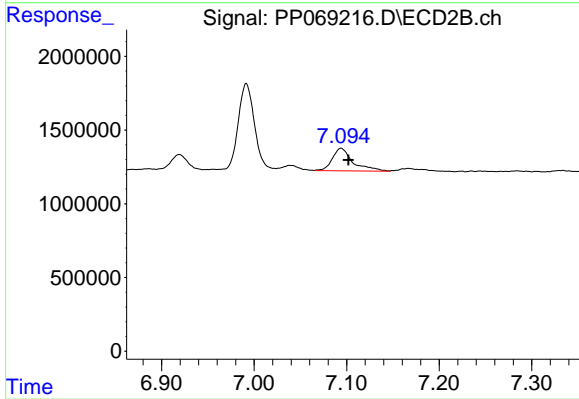
#29 AR-1254-4

R.T.: 6.675 min
 Delta R.T.: -0.007 min
 Response: 8395303
 Conc: 186.56 ng/ml



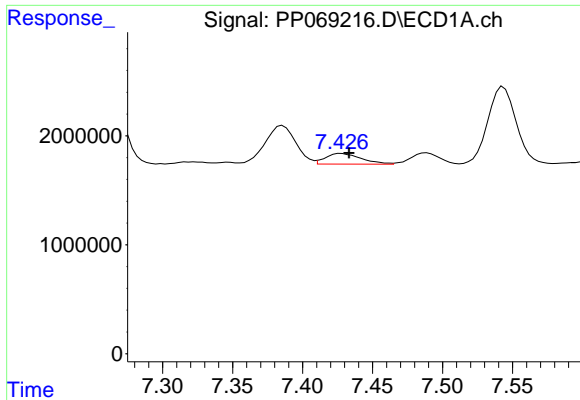
#30 AR-1254-5

R.T.: 7.962 min
 Delta R.T.: -0.007 min
 Response: 2425189
 Conc: 37.94 ng/ml



#30 AR-1254-5

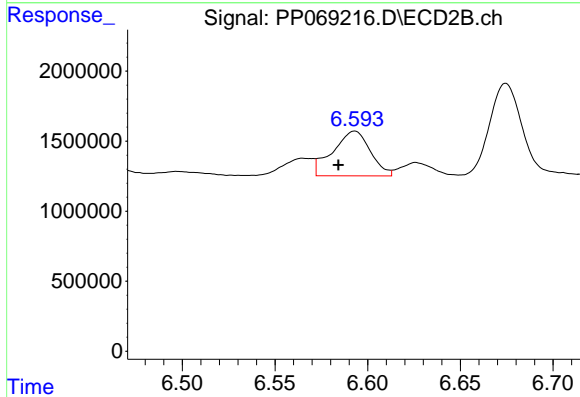
R.T.: 7.094 min
 Delta R.T.: -0.008 min
 Response: 2377961
 Conc: 31.87 ng/ml



#31 AR-1260-1

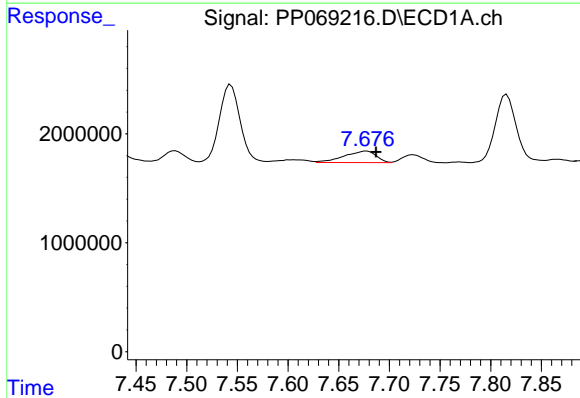
R.T.: 7.428 min
 Delta R.T.: -0.005 min
 Response: 1734658
 Conc: 27.65 ng/ml

Instrument :
 ECD_P
 ClientSampleId :
 AR1248CCC500



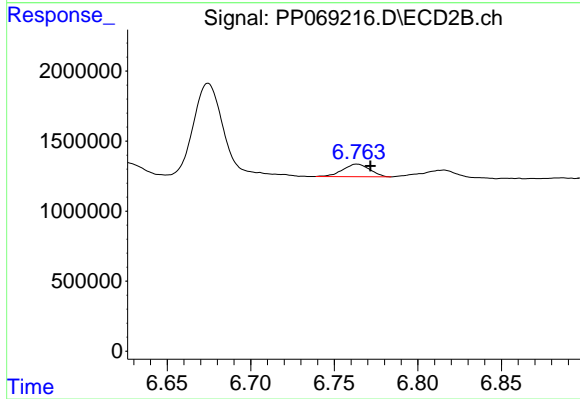
#31 AR-1260-1

R.T.: 6.593 min
 Delta R.T.: 0.009 min
 Response: 4498637
 Conc: 78.52 ng/ml



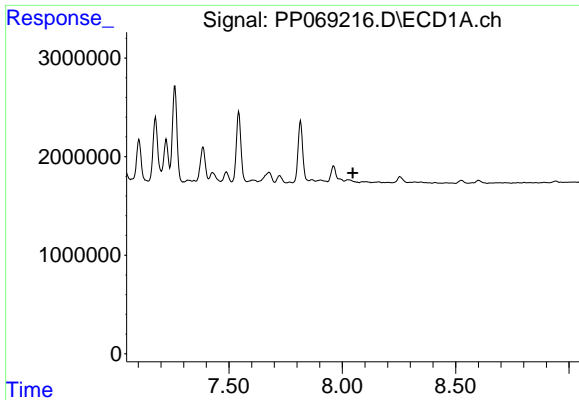
#32 AR-1260-2

R.T.: 7.677 min
 Delta R.T.: -0.010 min
 Response: 2316407
 Conc: 30.59 ng/ml



#32 AR-1260-2

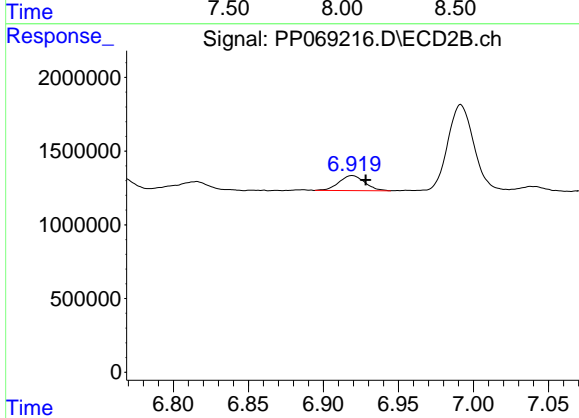
R.T.: 6.764 min
 Delta R.T.: -0.008 min
 Response: 1007528
 Conc: 15.29 ng/ml



#33 AR-1260-3

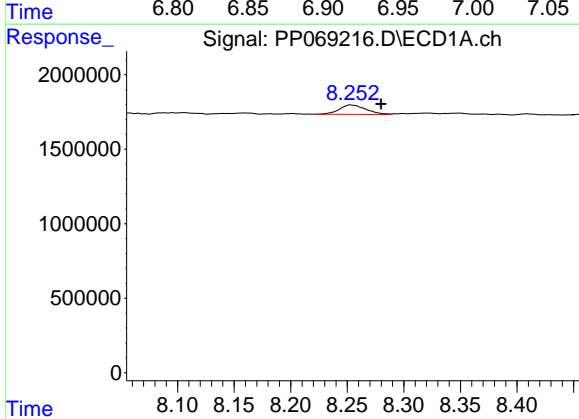
R.T.: 0.000 min
 Exp R.T.: 8.047 min
 Response: 0
 Conc: N.D.

Instrument : ECD_P
 ClientSampleId : AR1248CCC500



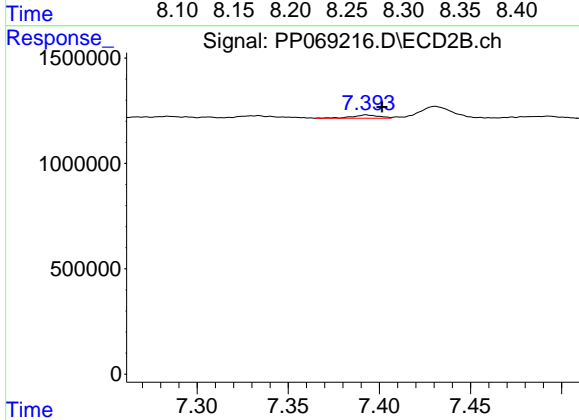
#33 AR-1260-3

R.T.: 6.919 min
 Delta R.T.: -0.009 min
 Response: 1218436
 Conc: 18.92 ng/ml



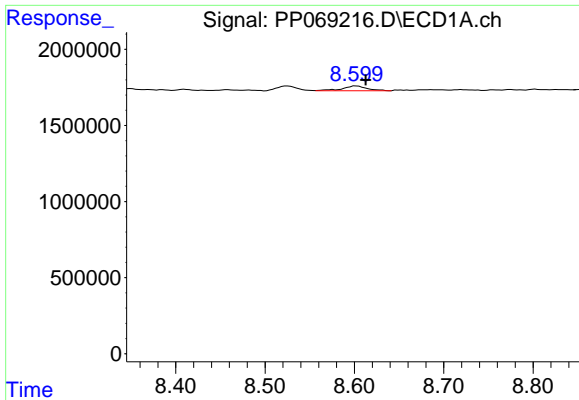
#34 AR-1260-4

R.T.: 8.254 min
 Delta R.T.: -0.026 min
 Response: 1038456
 Conc: 15.68 ng/ml



#34 AR-1260-4

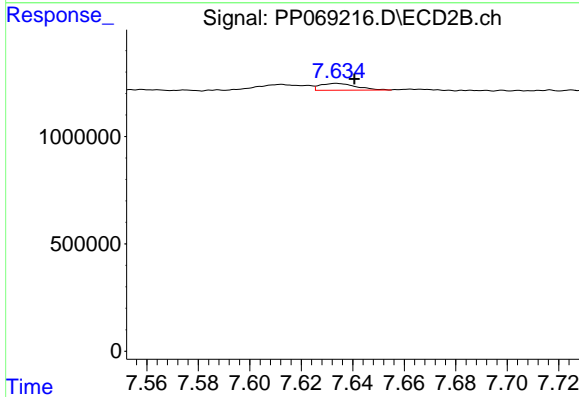
R.T.: 7.393 min
 Delta R.T.: -0.009 min
 Response: 165335
 Conc: 2.95 ng/ml



#35 AR-1260-5

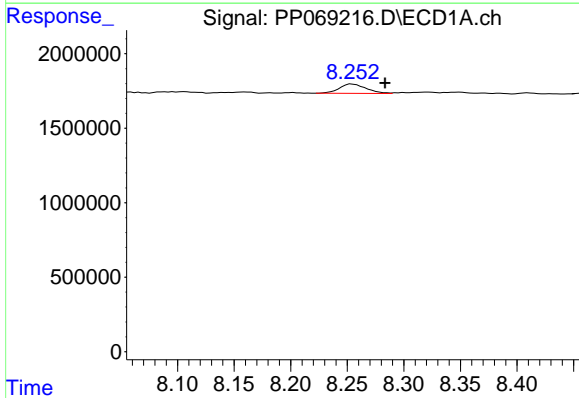
R.T.: 8.602 min
 Delta R.T.: -0.011 min
 Response: 602849
 Conc: 4.82 ng/ml

Instrument :
 ECD_P
 ClientSampleId :
 AR1248CCC500



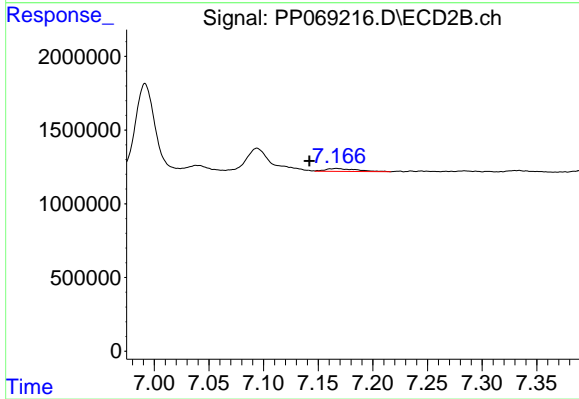
#35 AR-1260-5

R.T.: 7.634 min
 Delta R.T.: -0.007 min
 Response: 308467
 Conc: 2.51 ng/ml



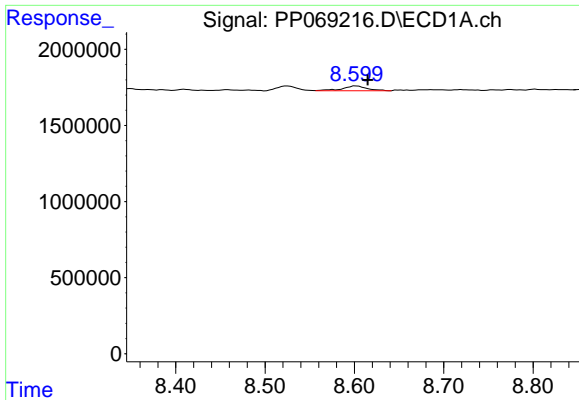
#36 AR-1262-1

R.T.: 8.254 min
 Delta R.T.: -0.030 min
 Response: 1038456
 Conc: 13.12 ng/ml



#36 AR-1262-1

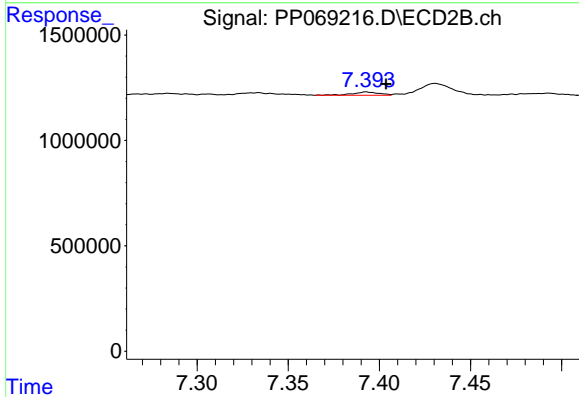
R.T.: 7.167 min
 Delta R.T.: 0.025 min
 Response: 394001
 Conc: 4.93 ng/ml



#37 AR-1262-2

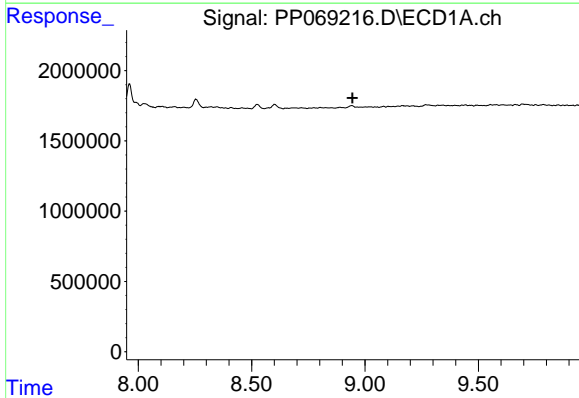
R.T.: 8.602 min
 Delta R.T.: -0.013 min
 Response: 602849
 Conc: 4.17 ng/ml

Instrument : ECD_P
 ClientSampleId : AR1248CCC500



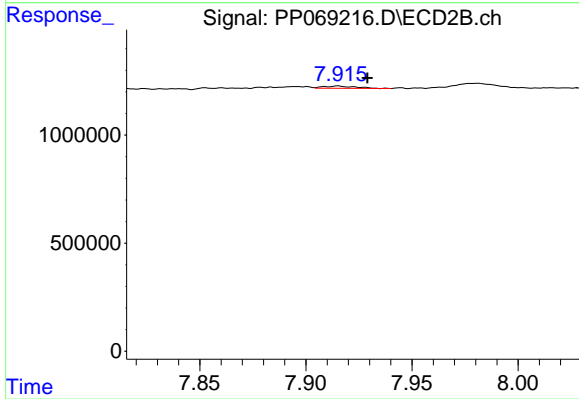
#37 AR-1262-2

R.T.: 7.393 min
 Delta R.T.: -0.011 min
 Response: 165335
 Conc: 2.36 ng/ml



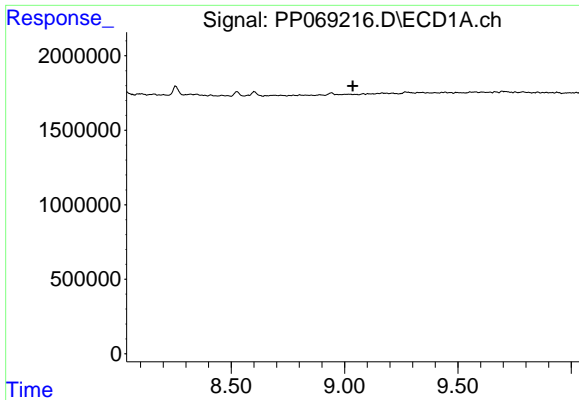
#38 AR-1262-3

R.T.: 0.000 min
 Exp R.T. : 8.945 min
 Response: 0
 Conc: N.D.



#38 AR-1262-3

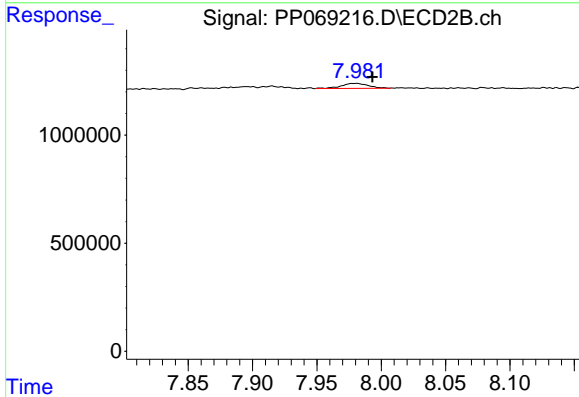
R.T.: 7.915 min
 Delta R.T.: -0.014 min
 Response: 112766
 Conc: 1.96 ng/ml



#39 AR-1262-4

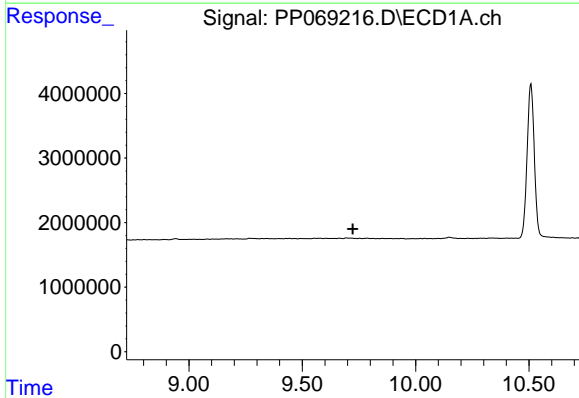
R.T.: 0.000 min
 Exp R.T.: 9.036 min
 Response: 0
 Conc: N.D.

Instrument : ECD_P
 ClientSampleId : AR1248CCC500



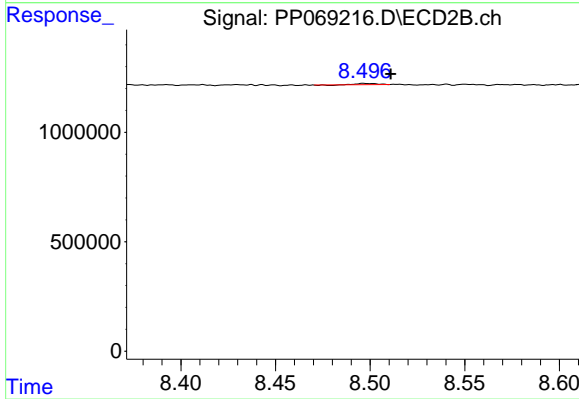
#39 AR-1262-4

R.T.: 7.981 min
 Delta R.T.: -0.012 min
 Response: 340073
 Conc: 3.37 ng/ml



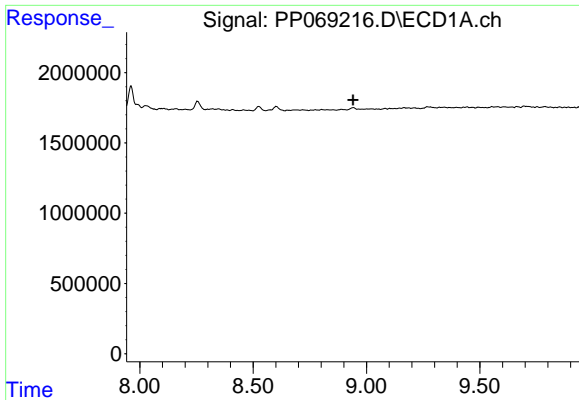
#40 AR-1262-5

R.T.: 0.000 min
 Exp R.T.: 9.724 min
 Response: 0
 Conc: N.D.



#40 AR-1262-5

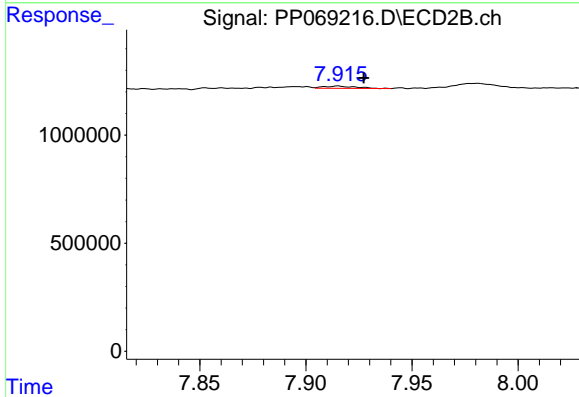
R.T.: 8.497 min
 Delta R.T.: -0.014 min
 Response: 32312
 Conc: 0.66 ng/ml



#41 AR-1268-1

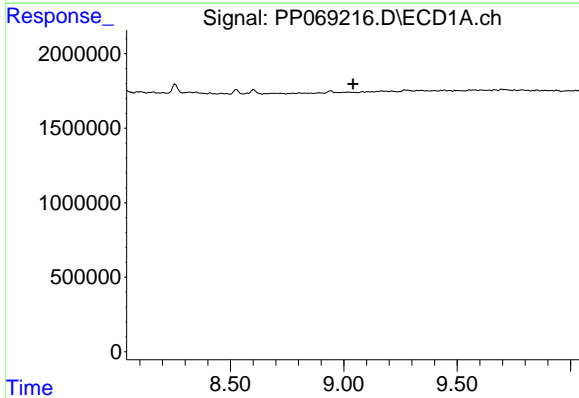
R.T.: 0.000 min
 Exp R.T.: 8.941 min
 Response: 0
 Conc: N.D.

Instrument :
 ECD_P
 ClientSampleId :
 AR1248CCC500



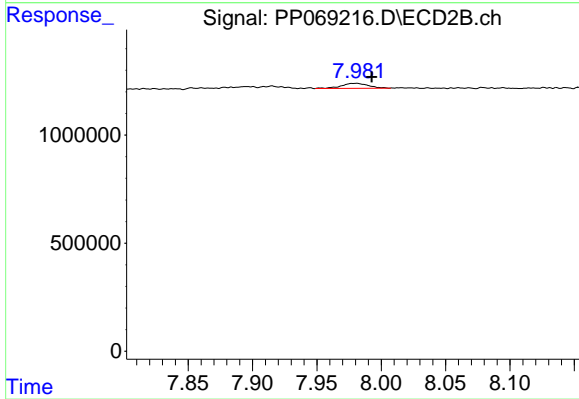
#41 AR-1268-1

R.T.: 7.915 min
 Delta R.T.: -0.012 min
 Response: 112766
 Conc: 0.69 ng/ml



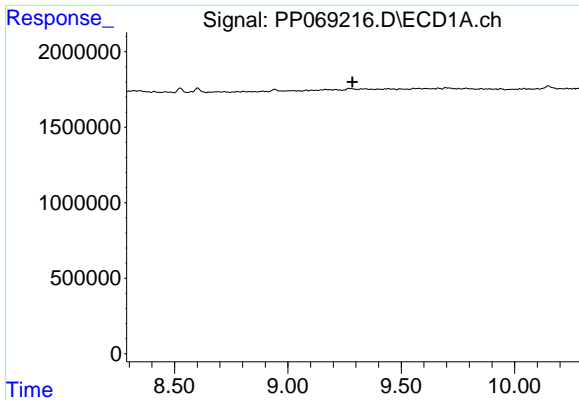
#42 AR-1268-2

R.T.: 0.000 min
 Exp R.T.: 9.041 min
 Response: 0
 Conc: N.D.



#42 AR-1268-2

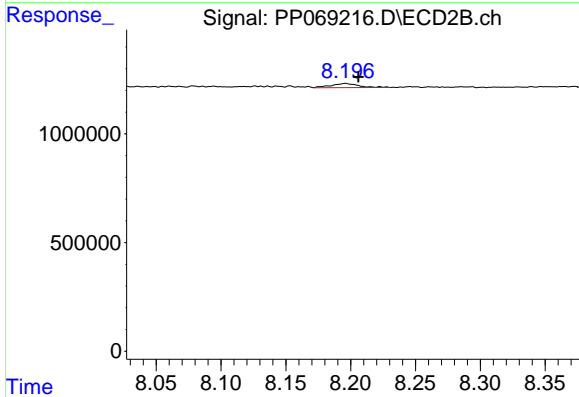
R.T.: 7.981 min
 Delta R.T.: -0.012 min
 Response: 340073
 Conc: 2.30 ng/ml



#43 AR-1268-3

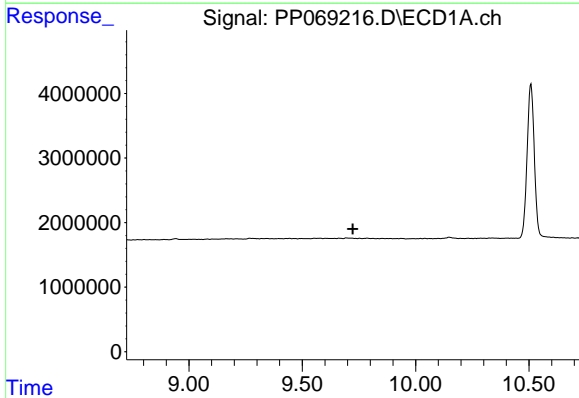
R.T.: 0.000 min
 Exp R.T.: 9.285 min
 Response: 0
 Conc: N.D.

Instrument :
 ECD_P
 ClientSampleId :
 AR1248CCC500



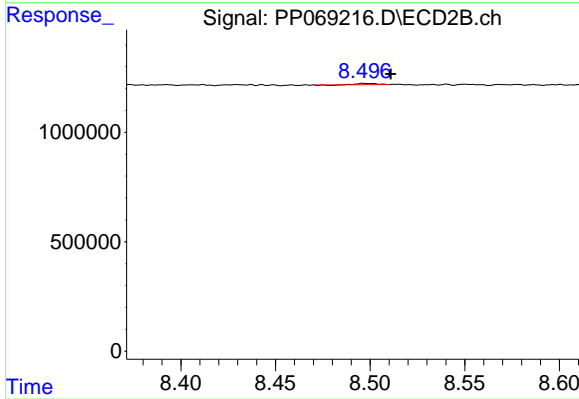
#43 AR-1268-3

R.T.: 8.196 min
 Delta R.T.: -0.010 min
 Response: 282756
 Conc: 2.13 ng/ml



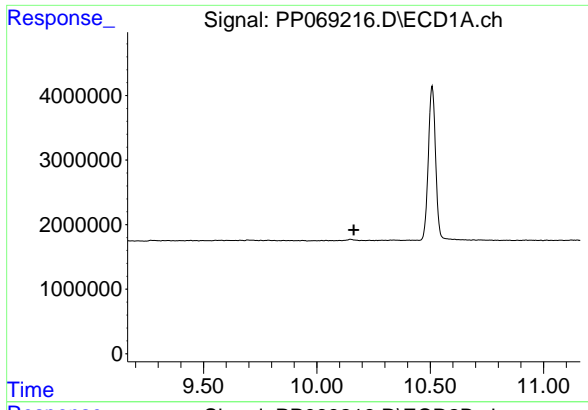
#44 AR-1268-4

R.T.: 0.000 min
 Exp R.T.: 9.723 min
 Response: 0
 Conc: N.D.



#44 AR-1268-4

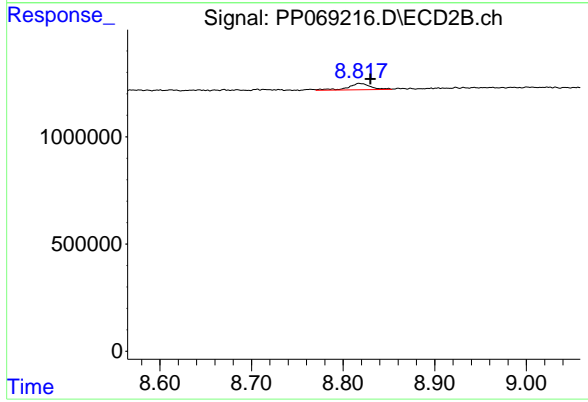
R.T.: 8.497 min
 Delta R.T.: -0.014 min
 Response: 32312
 Conc: 0.61 ng/ml



#45 AR-1268-5

R.T.: 0.000 min
 Exp R.T.: 10.164 min
 Response: 0
 Conc: N.D.

Instrument :
 ECD_P
 ClientSampleId :
 AR1248CCC500



#45 AR-1268-5

R.T.: 8.818 min
 Delta R.T.: -0.012 min
 Response: 525816
 Conc: 1.35 ng/ml