

Data Path : Z:\pestpcbsrv\HPCHEM1\ECD\_P\Data\PP012122\  
 Data File : PP043183.D  
 Signal(s) : Signal #1: ECD1A.CH Signal #2: ECD2B.CH  
 Acq On : 21 Jan 2022 17:27  
 Operator : AJ\MA  
 Sample : N1221-05 10X  
 Misc :  
 ALS Vial : 19 Sample Multiplier: 1

**Instrument :**  
 ECD\_P  
**ClientSampleId :**  
 GJA261L-END-2-3

Integration File signal 1: autoint1.e  
 Integration File signal 2: autoint2.e  
 Quant Time: Jan 21 23:24:29 2022  
 Quant Method : Z:\pestpcbsrv\HPCHEM1\ECD\_P\methods\PP011222.M  
 Quant Title : GC EXTRACTABLES  
 QLast Update : Thu Jan 13 19:45:07 2022  
 Response via : Initial Calibration  
 Integrator: ChemStation 6890 Scale Mode: Small noise peaks clipped

Volume Inj. : 2 µl  
 Signal #1 Phase : ZB-MR1 Signal #2 Phase: ZB-MR2  
 Signal #1 Info : 30Mx0.32mmx 0.50µ Signal #2 Info : 30M x 0.32mm x 0.25µm

Compound	RT#1	RT#2	Resp#1	Resp#2	ng/ml	ng/ml
-----						
System Monitoring Compounds						
1) SA Tetrachlo...	4.870	4.037	30583	41629	1.293	1.667 #
2) SA Decachlor...	10.791	9.364	30404	33871	2.080	1.736

Target Compounds

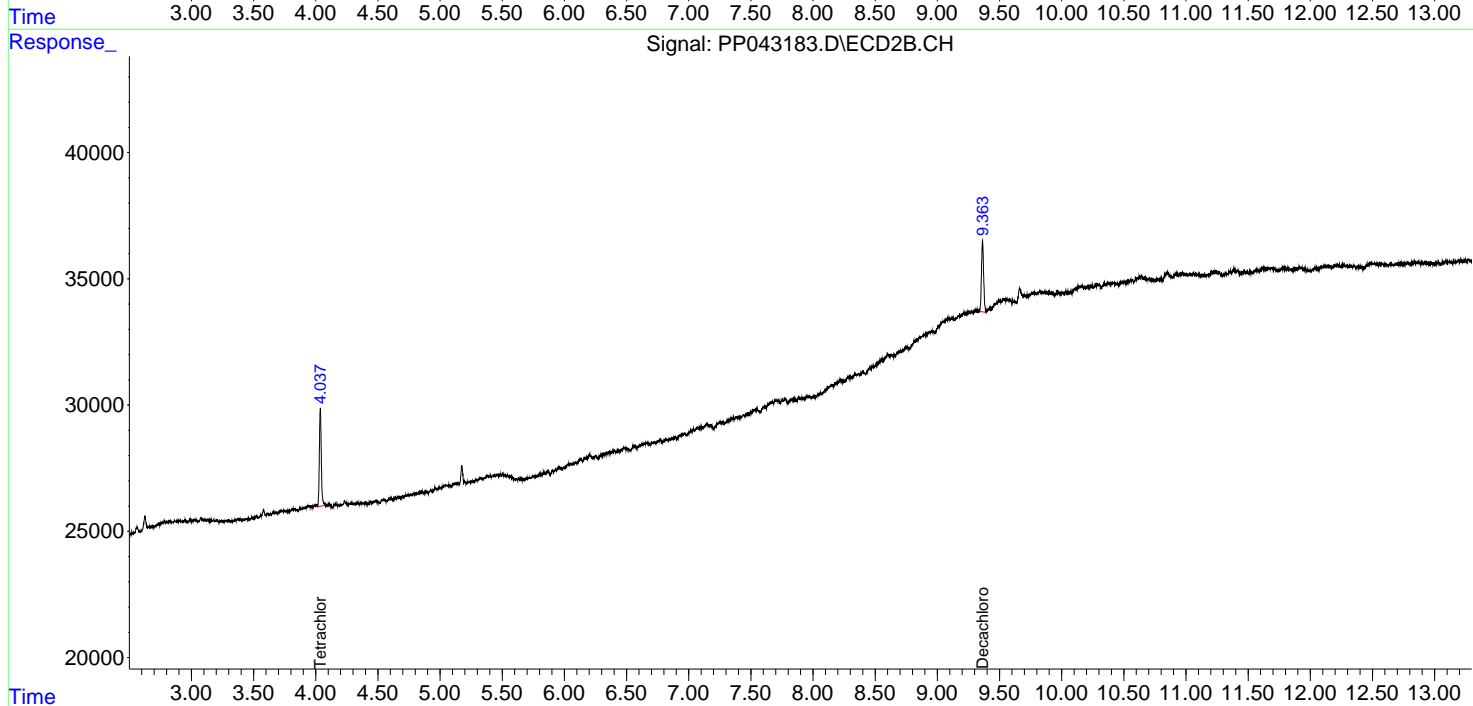
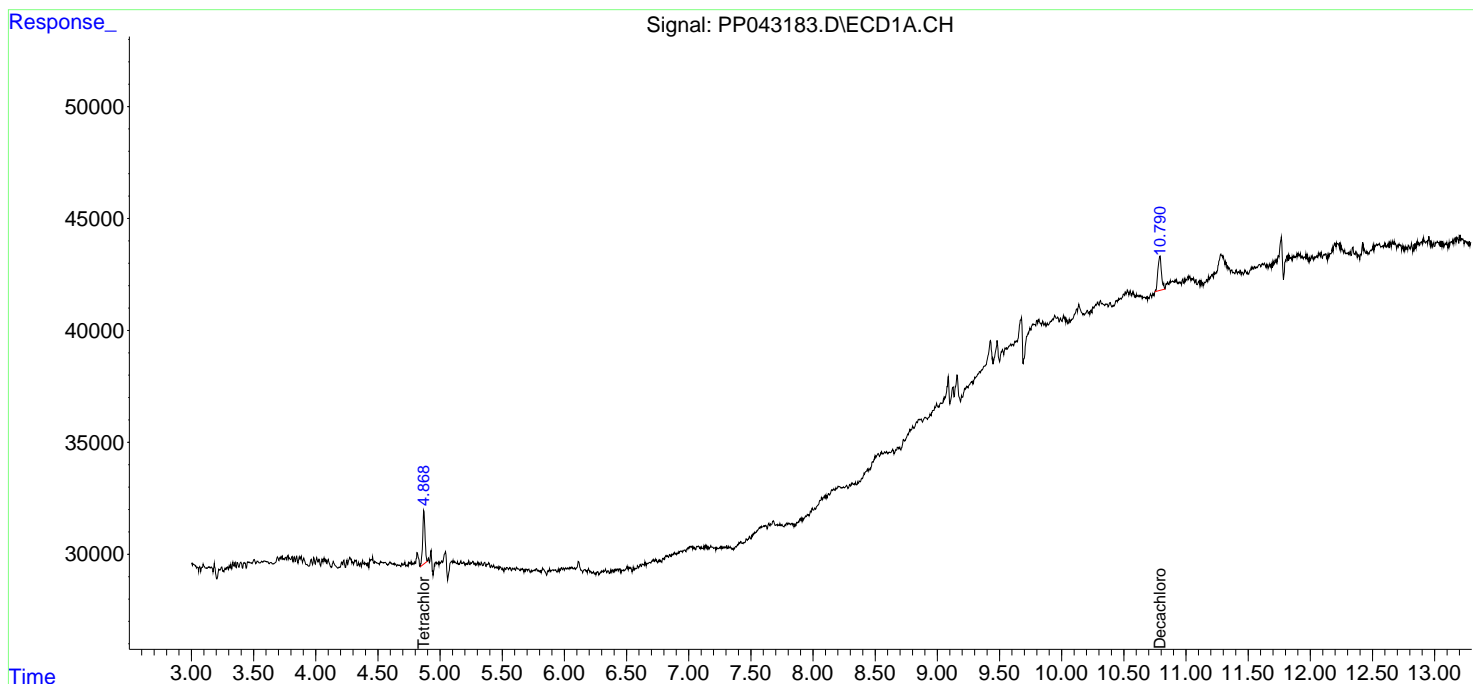
-----  
 (f)=RT Delta > 1/2 Window (#)=Amounts differ by > 25% (m)=manual int.

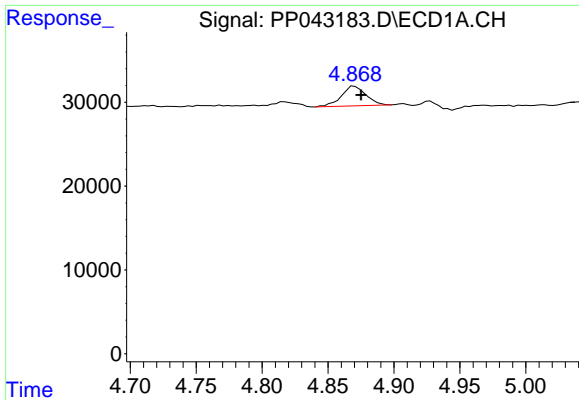
Data Path : Z:\pestpcbsrv\HPCHEM1\ECD\_P\Data\PP012122\  
 Data File : PP043183.D  
 Signal(s) : Signal #1: ECD1A.CH Signal #2: ECD2B.CH  
 Acq On : 21 Jan 2022 17:27  
 Operator : AJ\MA  
 Sample : N1221-05 10X  
 Misc :  
 ALS Vial : 19 Sample Multiplier: 1

Instrument :  
 ECD\_P  
 ClientSampleId :  
 GJA261L-END-2-3

Integration File signal 1: autoint1.e  
 Integration File signal 2: autoint2.e  
 Quant Time: Jan 21 23:24:29 2022  
 Quant Method : Z:\pestpcbsrv\HPCHEM1\ECD\_P\methods\PP012122.M  
 Quant Title : GC EXTRACTABLES  
 QLast Update : Thu Jan 13 19:45:07 2022  
 Response via : Initial Calibration  
 Integrator: ChemStation 6890 Scale Mode: Small noise peaks clipped

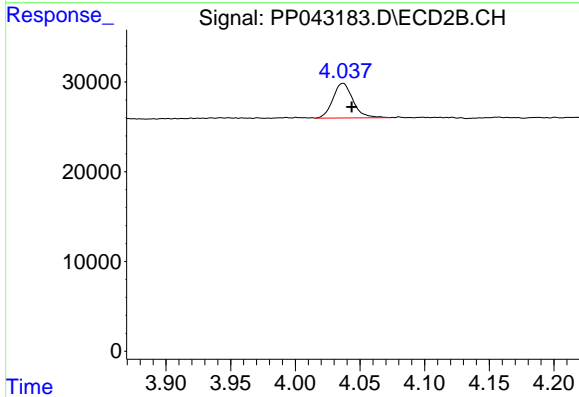
Volume Inj. : 2 µl  
 Signal #1 Phase : ZB-MR1 Signal #2 Phase: ZB-MR2  
 Signal #1 Info : 30Mx0.32mmx 0.50µ Signal #2 Info : 30M x 0.32mm x 0.25µm



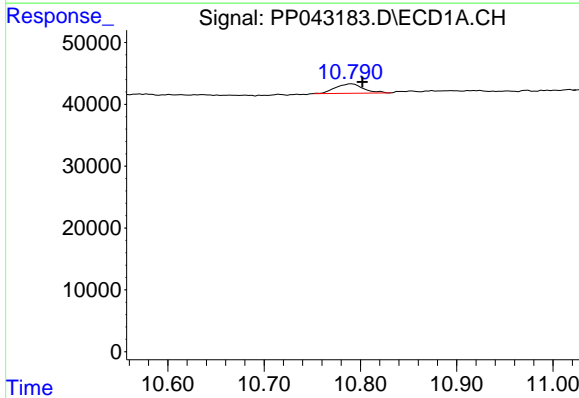


#1 Tetrachloro-m-xylene  
 R.T.: 4.870 min  
 Delta R.T.: -0.005 min  
 Response: 30583  
 Conc: 1.29 ng/ml

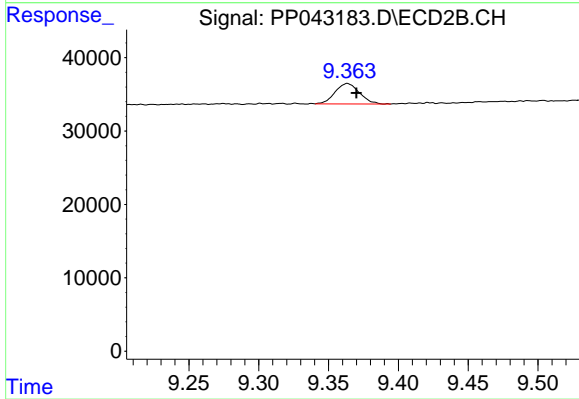
Instrument :  
 ECD\_P  
 ClientSampleId :  
 GJA261L-END-2-3



#1 Tetrachloro-m-xylene  
 R.T.: 4.037 min  
 Delta R.T.: -0.007 min  
 Response: 41629  
 Conc: 1.67 ng/ml



#2 Decachlorobiphenyl  
 R.T.: 10.791 min  
 Delta R.T.: -0.011 min  
 Response: 30404  
 Conc: 2.08 ng/ml



#2 Decachlorobiphenyl  
 R.T.: 9.364 min  
 Delta R.T.: -0.006 min  
 Response: 33871  
 Conc: 1.74 ng/ml