

Data Path : Z:\pestpcbsrv\HPCHEM1\ECD_P\Data\PP012221\
 Data File : PP032889.D
 Signal(s) : Signal #1: ECD1A.CH Signal #2: ECD2B.CH
 Acq On : 22 Jan 2021 14:41
 Operator : DD\AJ
 Sample : M1187-05 10X
 Misc :
 ALS Vial : 10 Sample Multiplier: 1

Instrument :
 ECD_P
 ClientSampleId :
 216222-END-1

Integration File signal 1: autoint1.e
 Integration File signal 2: autoint2.e
 Quant Time: Jan 23 00:32:54 2021
 Quant Method : Z:\pestpcbsrv\HPCHEM1\ECD_P\methods\PP011421.M
 Quant Title : GC EXTRACTABLES
 QLast Update : Thu Jan 14 08:12:55 2021
 Response via : Initial Calibration
 Integrator: ChemStation 6890 Scale Mode: Small noise peaks clipped

Volume Inj. : 2 µl
 Signal #1 Phase : ZB-MR1 Signal #2 Phase: ZB-MR2
 Signal #1 Info : 30Mx0.32mmx 0.50µ Signal #2 Info : 30M x 0.32mm x 0.25µm

Compound	RT#1	RT#2	Resp#1	Resp#2	ng/ml	ng/ml

System Monitoring Compounds						
1) SA Tetrachlo...	4.738	4.008	119972	103925	2.066	2.209
2) SA Decachlor...	10.576	9.289	105460	77992	2.673	2.082

Target Compounds

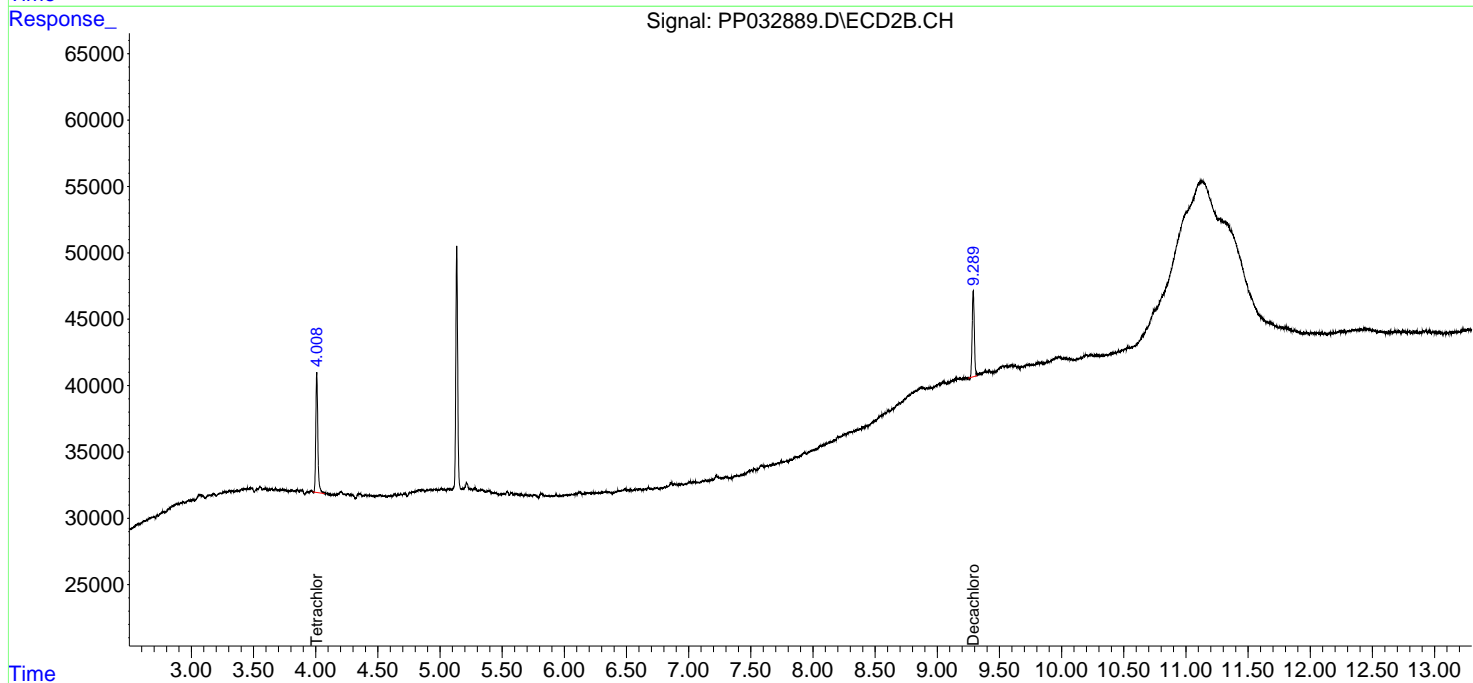
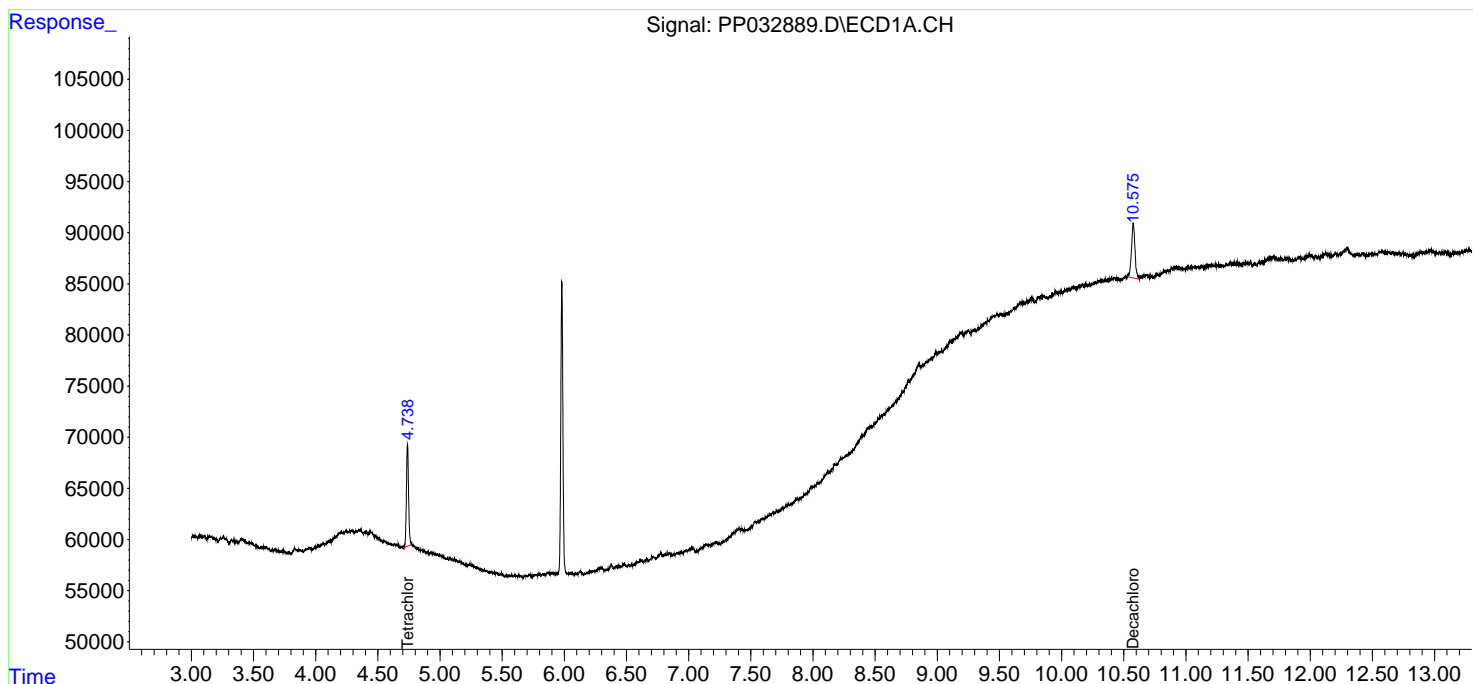
(f)=RT Delta > 1/2 Window (#)=Amounts differ by > 25% (m)=manual int.

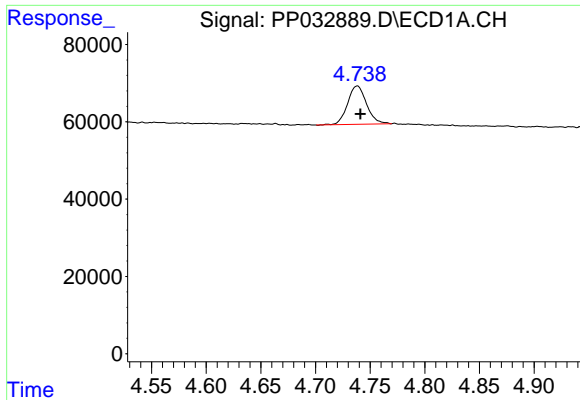
Data Path : Z:\pestpcbsrv\HPCHEM1\ECD_P\Data\PP012221\
 Data File : PP032889.D
 Signal(s) : Signal #1: ECD1A.CH Signal #2: ECD2B.CH
 Acq On : 22 Jan 2021 14:41
 Operator : DD\AJ
 Sample : M1187-05 10X
 Misc :
 ALS Vial : 10 Sample Multiplier: 1

Instrument :
 ECD_P
 ClientSampleId :
 216222-END-1

Integration File signal 1: autoint1.e
 Integration File signal 2: autoint2.e
 Quant Time: Jan 23 00:32:54 2021
 Quant Method : Z:\pestpcbsrv\HPCHEM1\ECD_P\methods\PP011421.M
 Quant Title : GC EXTRACTABLES
 QLast Update : Thu Jan 14 08:12:55 2021
 Response via : Initial Calibration
 Integrator: ChemStation 6890 Scale Mode: Small noise peaks clipped

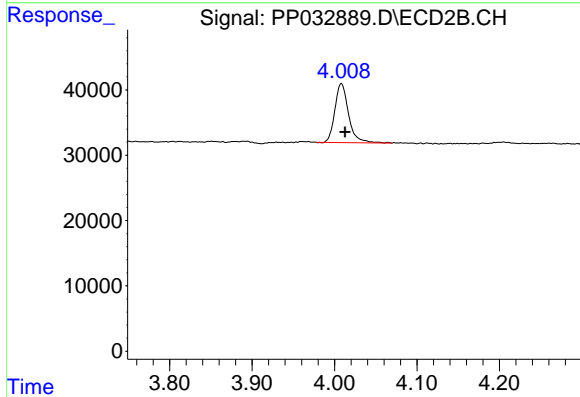
Volume Inj. : 2 µl
 Signal #1 Phase : ZB-MR1 Signal #2 Phase: ZB-MR2
 Signal #1 Info : 30Mx0.32mmx 0.50µm Signal #2 Info : 30M x 0.32mm x 0.25µm



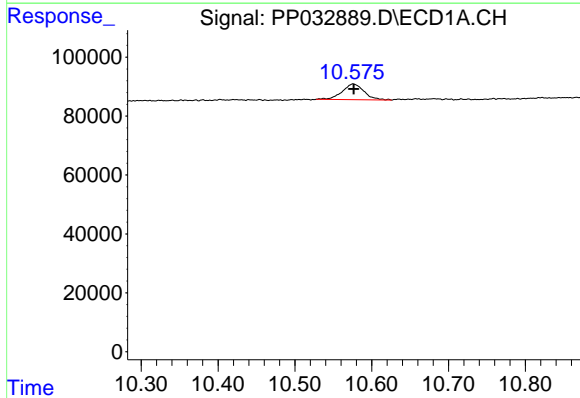


#1 Tetrachloro-m-xylene
 R.T.: 4.738 min
 Delta R.T.: -0.003 min
 Response: 119972
 Conc: 2.07 ng/ml

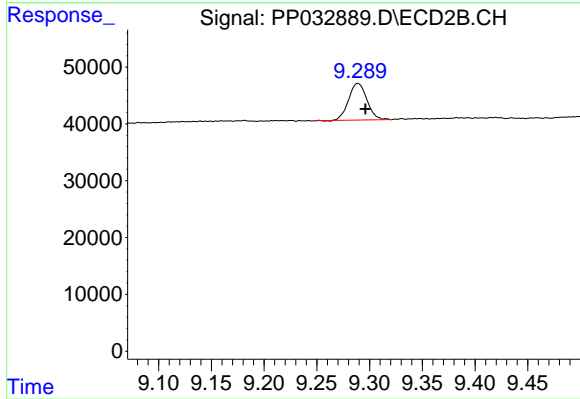
Instrument :
 ECD_P
 ClientSampleId :
 216222-END-1



#1 Tetrachloro-m-xylene
 R.T.: 4.008 min
 Delta R.T.: -0.005 min
 Response: 103925
 Conc: 2.21 ng/ml



#2 Decachlorobiphenyl
 R.T.: 10.576 min
 Delta R.T.: -0.001 min
 Response: 105460
 Conc: 2.67 ng/ml



#2 Decachlorobiphenyl
 R.T.: 9.289 min
 Delta R.T.: -0.007 min
 Response: 77992
 Conc: 2.08 ng/ml