

Data Path : Z:\pestpcbsrv\HPCHEM1\ECD_P\Data\PP012323\
 Data File : PP054800.D
 Signal(s) : Signal #1: ECD1A.ch Signal #2: ECD2B.ch
 Acq On : 23 Jan 2023 08:57
 Operator : YP\AJ
 Sample : HEXANE
 Misc :
 ALS Vial : 1 Sample Multiplier: 1

Instrument :
 ECD_P
 ClientSampleId :

Integration File signal 1: autoint1.e
 Integration File signal 2: autoint2.e
 Quant Time: Jan 23 11:43:50 2023
 Quant Method : Z:\pestpcbsrv\HPCHEM1\ECD_P\methods\PP011723.M
 Quant Title : GC EXTRACTABLES
 QLast Update : Wed Jan 18 04:34:06 2023
 Response via : Initial Calibration
 Integrator: ChemStation

Volume Inj. : 2 µl
 Signal #1 Phase : ZB-MR1 Signal #2 Phase: ZB-MR2
 Signal #1 Info : 30Mx0.32mmx 0.50µ Signal #2 Info : 30M x 0.32mm x 0.25µm

| Compound | RT#1 | RT#2 | Resp#1 | Resp#2 | ng/ml | ng/ml |
|-----------------------------|--------|--------|----------|---------|----------|-----------|
| System Monitoring Compounds | | | | | | |
| 1) SA Tetrachlo... | 0.000 | 3.534f | 0 | 2153 | N.D. | 0.001 # |
| 2) SA Decachlor... | 10.116 | 0.000 | 30814 | 0 | 0.023 | N.D. # |
| Target Compounds | | | | | | |
| 3) L1 AR-1016-1 | 5.529f | 4.674 | 1935359 | 85411 | 29.884 | 1.696 # |
| 4) L1 AR-1016-2 | 5.529 | 4.674f | 1935359 | 85411 | 20.481 | 1.196 # |
| 5) L1 AR-1016-3 | 5.582 | 0.000 | 3708134 | 0 | 62.179 | N.D. # |
| 7) L1 AR-1016-5 | 6.002f | 5.135 | 939714 | 1159640 | 19.410 | 26.467 # |
| 9) L2 AR-1221-2 | 4.626 | 0.000 | 55602108 | 0 | 3159.274 | N.D. # |
| 12) L3 AR-1232-2 | 0.000 | 4.674 | 0 | 85411 | N.D. | 2.613 # |
| 13) L3 AR-1232-3 | 5.529 | 0.000 | 1935359 | 0 | 44.904 | N.D. # |
| 14) L3 AR-1232-4 | 0.000 | 4.947 | 0 | 578428 | N.D. | 33.390 # |
| 15) L3 AR-1232-5 | 5.787 | 5.135f | 4050366 | 1159640 | 235.410 | 61.273 # |
| 16) L4 AR-1242-1 | 5.529f | 4.674 | 1935359 | 85411 | 35.793 | 2.024 # |
| 17) L4 AR-1242-2 | 5.529 | 4.674 | 1935359 | 85411 | 24.806 | 1.455 # |
| 18) L4 AR-1242-3 | 5.582 | 0.000 | 3708134 | 0 | 75.485 | N.D. # |
| 19) L4 AR-1242-4 | 0.000 | 4.947 | 0 | 578428 | N.D. | 16.486 # |
| 20) L4 AR-1242-5 | 0.000 | 5.498f | 0 | 5797398 | N.D. | 152.520 # |
| 21) L5 AR-1248-1 | 5.529f | 4.674 | 1935359 | 85411 | 48.598 | 2.730 # |
| 22) L5 AR-1248-2 | 5.787 | 0.000 | 4050366 | 0 | 68.239 | N.D. # |
| 23) L5 AR-1248-3 | 6.002f | 4.947 | 939714 | 578428 | 14.240 | 11.382 |
| 24) L5 AR-1248-4 | 6.379 | 5.135f | 2407675 | 1159640 | 36.033 | 19.506 # |
| 25) L5 AR-1248-5 | 0.000 | 5.498 | 0 | 5797398 | N.D. | 114.101 # |
| 26) L6 AR-1254-1 | 6.379 | 5.498f | 2407675 | 5797398 | 34.065 | 68.188 # |
| 27) L6 AR-1254-2 | 6.610f | 5.620 | 37396 | 2053969 | 0.391 | 28.226 # |
| 28) L6 AR-1254-3 | 6.957 | 6.038 | 716845 | 332861 | 8.262 | 2.941 # |
| 29) L6 AR-1254-4 | 7.240 | 0.000 | 138202 | 0 | 2.206 | N.D. # |
| 30) L6 AR-1254-5 | 7.646 | 0.000 | 408002 | 0 | 5.830 | N.D. # |
| 31) L7 AR-1260-1 | 7.099f | 0.000 | 4574756 | 0 | 66.604 | N.D. # |
| 32) L7 AR-1260-2 | 7.381 | 6.327f | 5058059 | 968657 | 63.249 | 10.524 # |
| 33) L7 AR-1260-3 | 7.710f | 6.520f | 3169441 | 101012 | 52.614 | 1.124 # |
| 34) L7 AR-1260-4 | 7.961 | 6.950f | 21209864 | 30972 | 303.133 | 0.411 # |
| 35) L7 AR-1260-5 | 0.000 | 7.208 | 0 | 272104 | N.D. | 1.712 # |
| 36) L8 AR-1262-1 | 7.710f | 6.790f | 3169441 | -159122 | 38.719 | N.D. # |
| 37) L8 AR-1262-2 | 0.000 | 6.950f | 0 | 30972 | N.D. | 0.337 # |
| 39) L8 AR-1262-4 | 8.682 | 7.544f | 1924882 | 342924 | 38.718 | 2.652 # |
| 42) L9 AR-1268-2 | 8.682 | 7.544f | 1924882 | 342924 | 11.356 | 1.751 # |
| 43) L9 AR-1268-3 | 8.887f | 0.000 | 684140 | 0 | 4.593 | N.D. # |

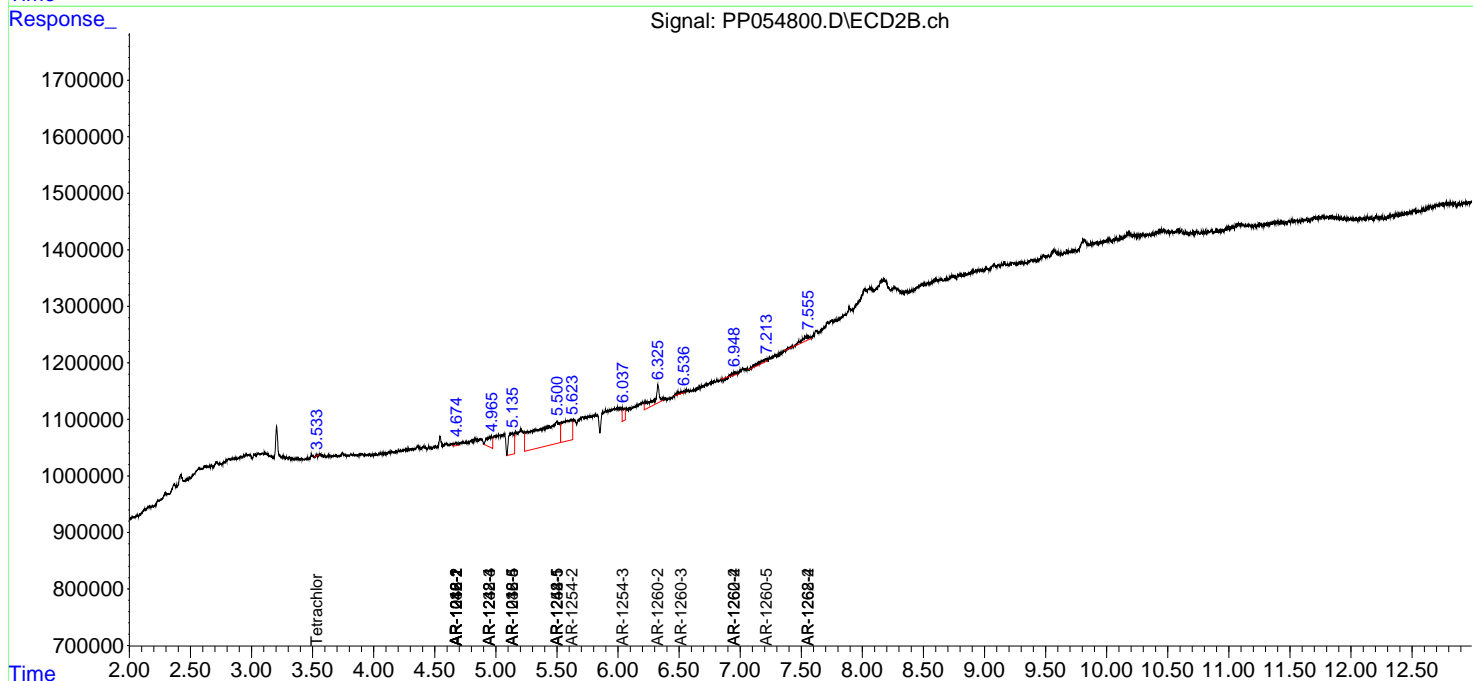
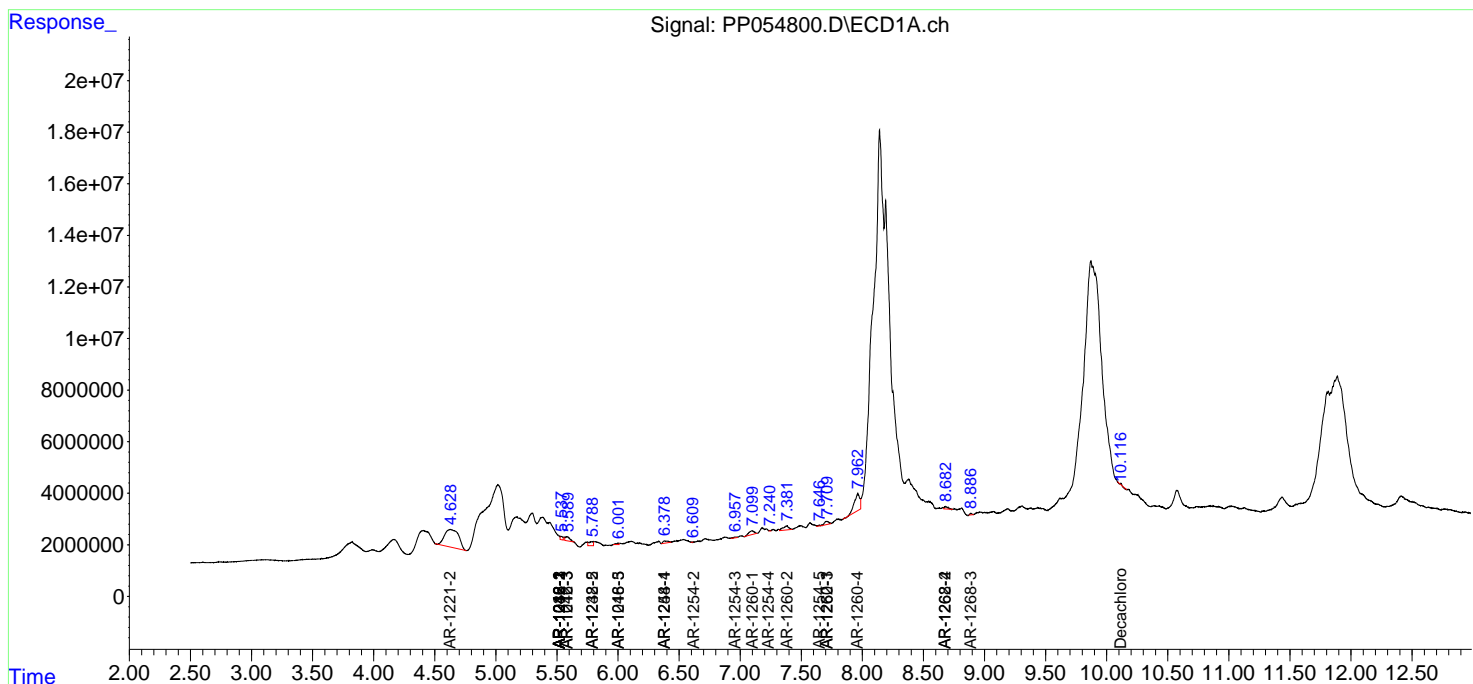
(f)=RT Delta > 1/2 Window (#)=Amounts differ by > 25% (m)=manual int.

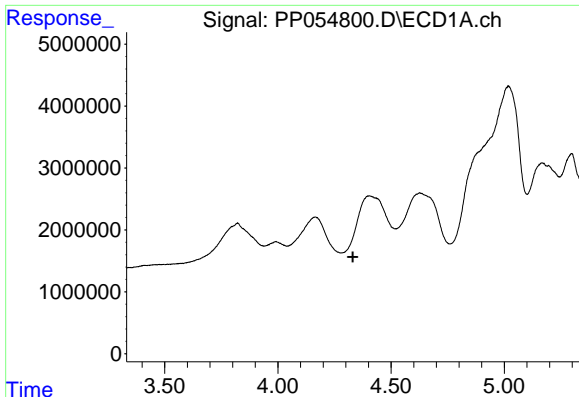
Data Path : Z:\pestpcbsrv\HPCHEM1\ECD_P\Data\PP012323\
 Data File : PP054800.D
 Signal(s) : Signal #1: ECD1A.ch Signal #2: ECD2B.ch
 Acq On : 23 Jan 2023 08:57
 Operator : YP\AJ
 Sample : HEXANE
 Misc :
 ALS Vial : 1 Sample Multiplier: 1

Instrument :
 ECD_P
 ClientSampleId :

Integration File signal 1: autoint1.e
 Integration File signal 2: autoint2.e
 Quant Time: Jan 23 11:43:50 2023
 Quant Method : Z:\pestpcbsrv\HPCHEM1\ECD_P\methods\PP011723.M
 Quant Title : GC EXTRACTABLES
 QLast Update : Wed Jan 18 04:34:06 2023
 Response via : Initial Calibration
 Integrator: ChemStation

Volume Inj. : 2 µl
 Signal #1 Phase : ZB-MR1 Signal #2 Phase: ZB-MR2
 Signal #1 Info : 30Mx0.32mmx 0.50µ Signal #2 Info : 30M x 0.32mm x 0.25µm

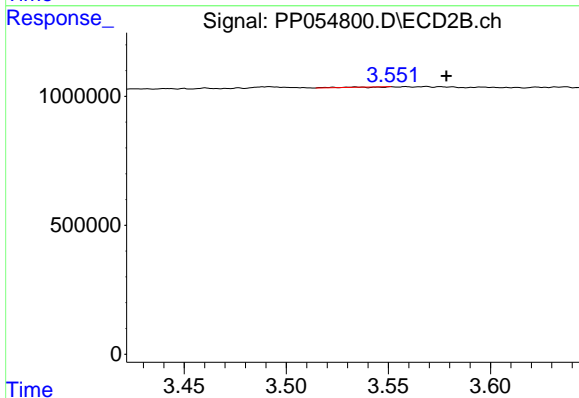




#1 Tetrachloro-m-xylene

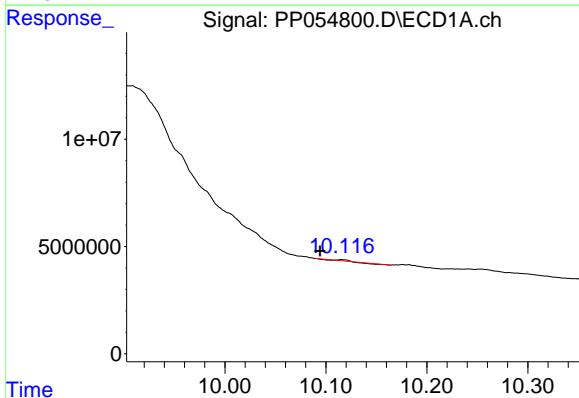
R.T.: 0.000 min
 Exp R.T.: 4.331 min
 Response: 0
 Conc: N.D.

Instrument :
 ECD_P
 ClientSampleId :



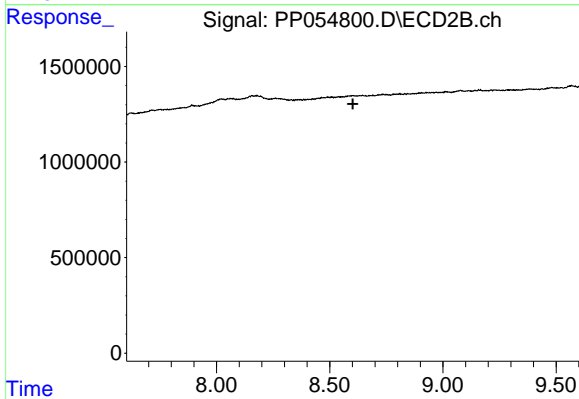
#1 Tetrachloro-m-xylene

R.T.: 3.534 min
 Delta R.T.: -0.044 min
 Response: 2153
 Conc: 0.00 ng/ml



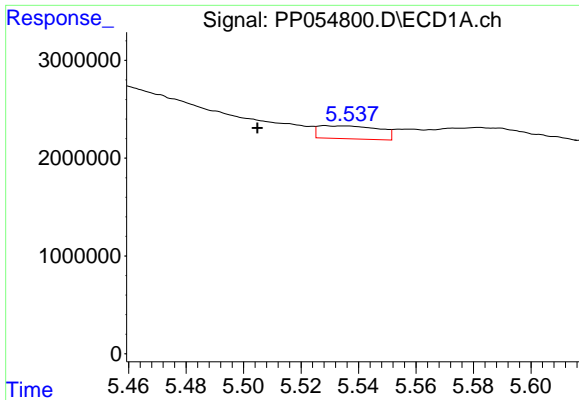
#2 Decachlorobiphenyl

R.T.: 10.116 min
 Delta R.T.: 0.021 min
 Response: 30814
 Conc: 0.02 ng/ml



#2 Decachlorobiphenyl

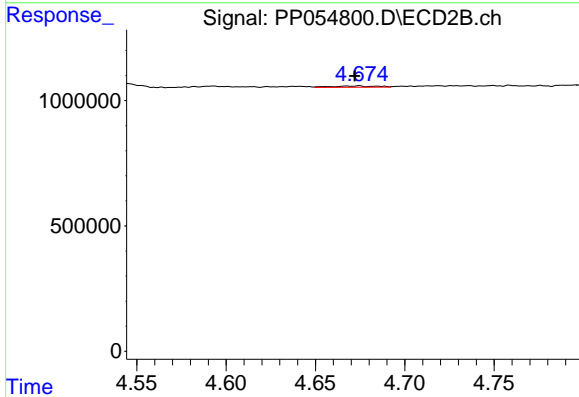
R.T.: 0.000 min
 Exp R.T.: 8.602 min
 Response: 0
 Conc: N.D.



#3 AR-1016-1

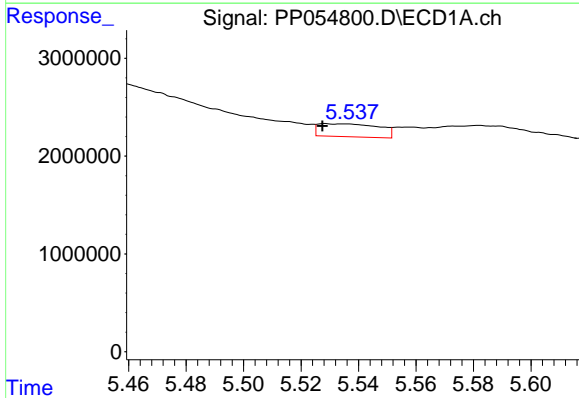
R.T.: 5.529 min
 Delta R.T.: 0.024 min
 Response: 1935359
 Conc: 29.88 ng/ml

Instrument :
 ECD_P
 ClientSampleId :



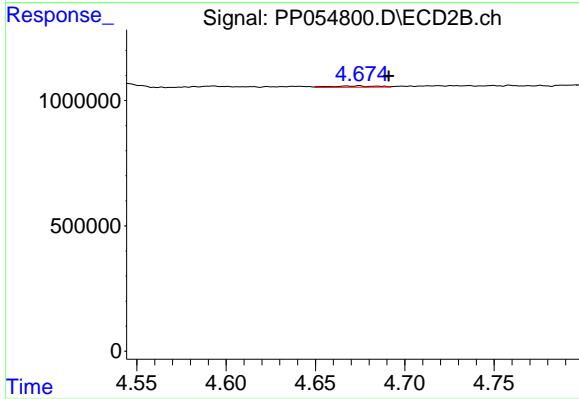
#3 AR-1016-1

R.T.: 4.674 min
 Delta R.T.: 0.002 min
 Response: 85411
 Conc: 1.70 ng/ml



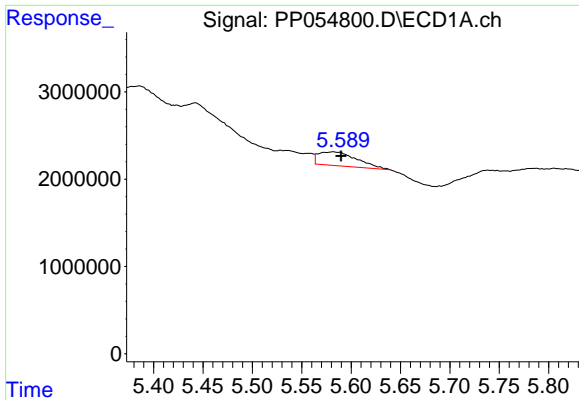
#4 AR-1016-2

R.T.: 5.529 min
 Delta R.T.: 0.001 min
 Response: 1935359
 Conc: 20.48 ng/ml



#4 AR-1016-2

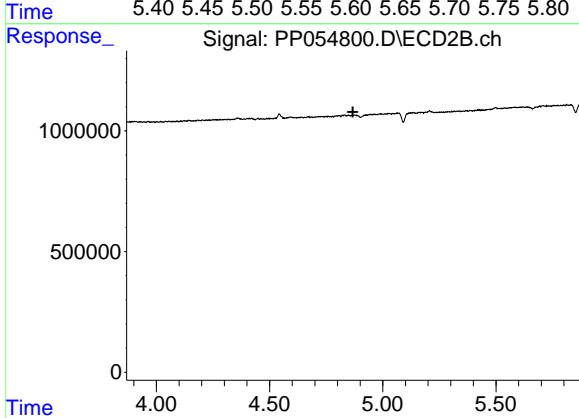
R.T.: 4.674 min
 Delta R.T.: -0.017 min
 Response: 85411
 Conc: 1.20 ng/ml



#5 AR-1016-3

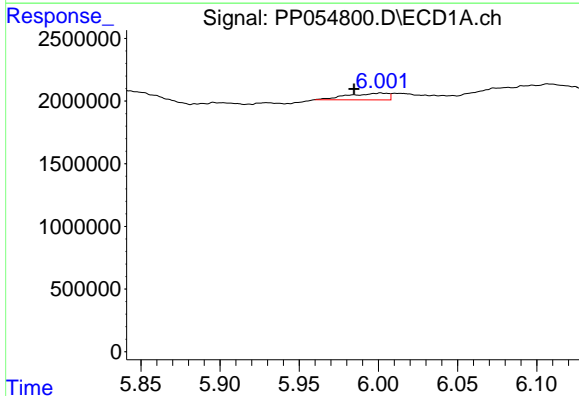
R.T.: 5.582 min
 Delta R.T.: -0.008 min
 Response: 3708134
 Conc: 62.18 ng/ml

Instrument :
 ECD_P
 ClientSampleId :



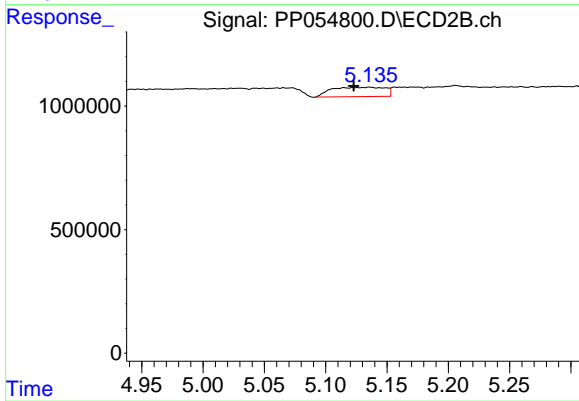
#5 AR-1016-3

R.T.: 0.000 min
 Exp R.T. : 4.868 min
 Response: 0
 Conc: N.D.



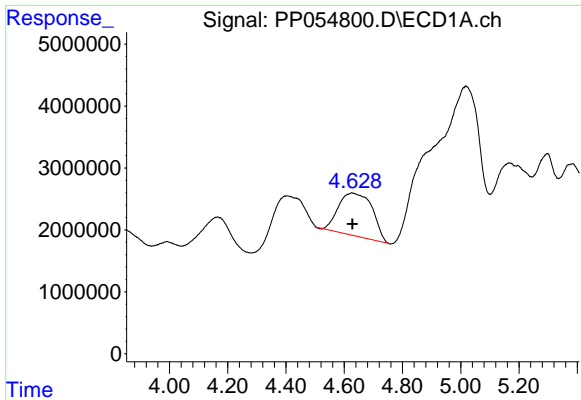
#7 AR-1016-5

R.T.: 6.002 min
 Delta R.T.: 0.017 min
 Response: 939714
 Conc: 19.41 ng/ml



#7 AR-1016-5

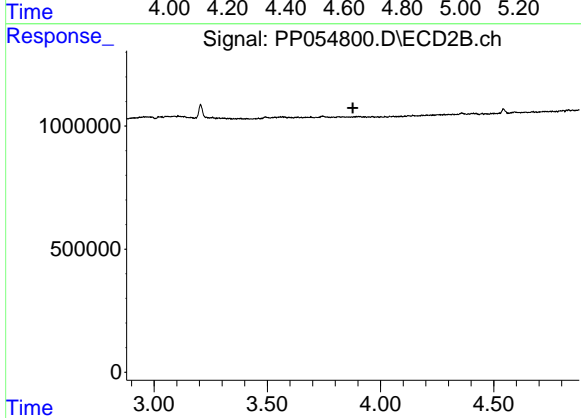
R.T.: 5.135 min
 Delta R.T.: 0.012 min
 Response: 1159640
 Conc: 26.47 ng/ml



#9 AR-1221-2

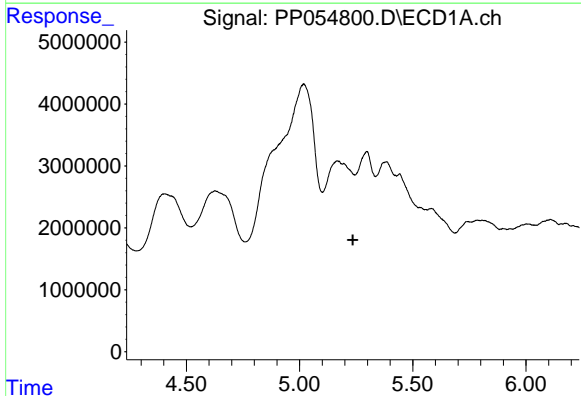
R.T.: 4.626 min
 Delta R.T.: -0.002 min
 Response: 55602108
 Conc: 3159.27 ng/m

Instrument :
 ECD_P
 ClientSampleId :



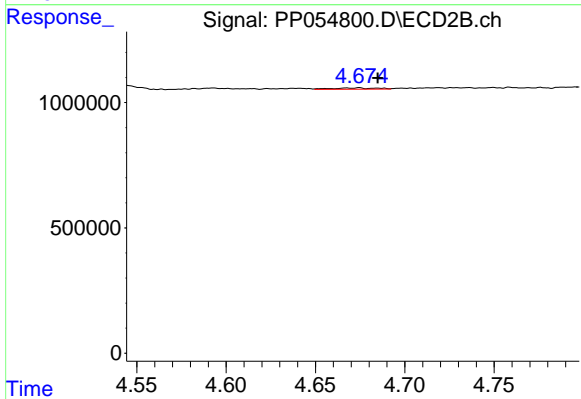
#9 AR-1221-2

R.T.: 0.000 min
 Exp R.T. : 3.878 min
 Response: 0
 Conc: N.D.



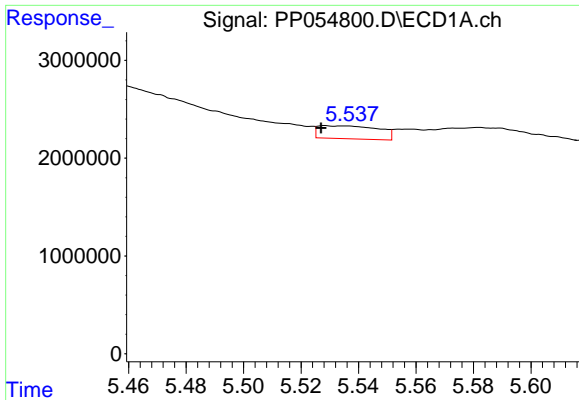
#12 AR-1232-2

R.T.: 0.000 min
 Exp R.T. : 5.235 min
 Response: 0
 Conc: N.D.



#12 AR-1232-2

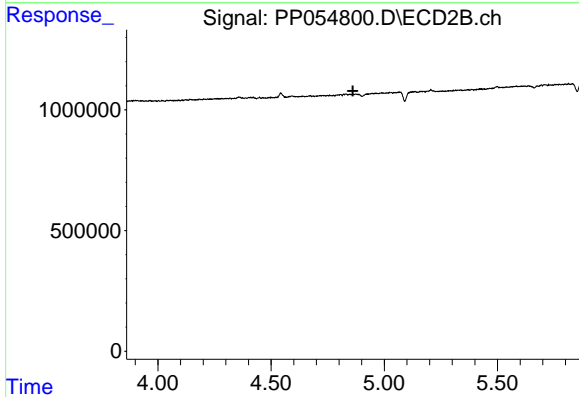
R.T.: 4.674 min
 Delta R.T.: -0.010 min
 Response: 85411
 Conc: 2.61 ng/ml



#13 AR-1232-3

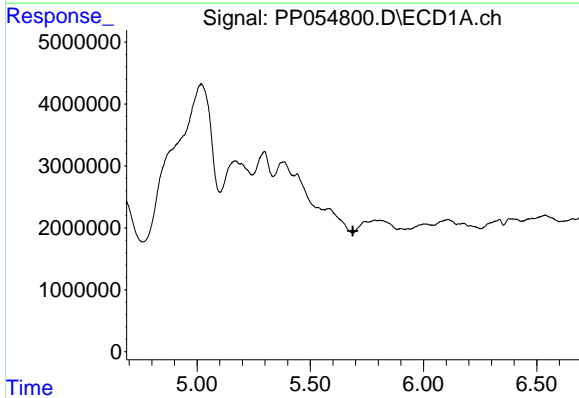
R.T.: 5.529 min
 Delta R.T.: 0.002 min
 Response: 1935359
 Conc: 44.90 ng/ml

Instrument :
 ECD_P
 ClientSampleId :



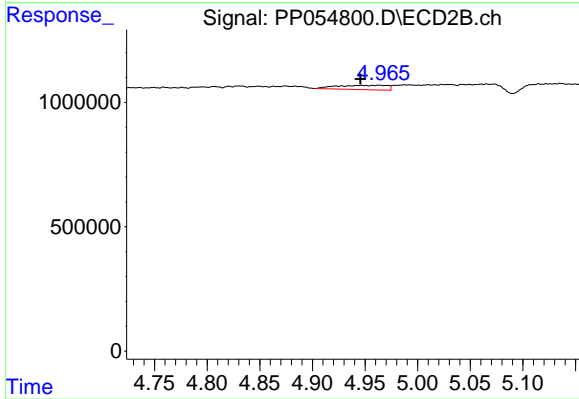
#13 AR-1232-3

R.T.: 0.000 min
 Exp R.T. : 4.862 min
 Response: 0
 Conc: N.D.



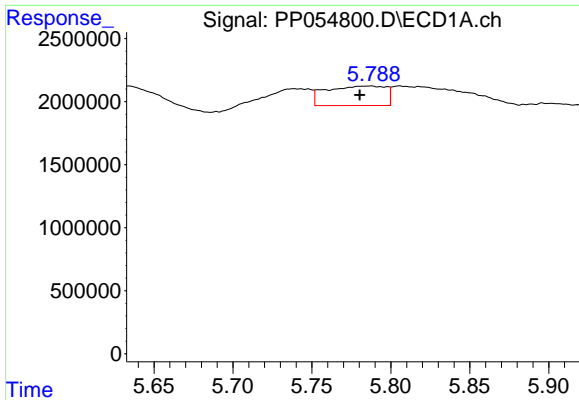
#14 AR-1232-4

R.T.: 0.000 min
 Exp R.T. : 5.688 min
 Response: 0
 Conc: N.D.



#14 AR-1232-4

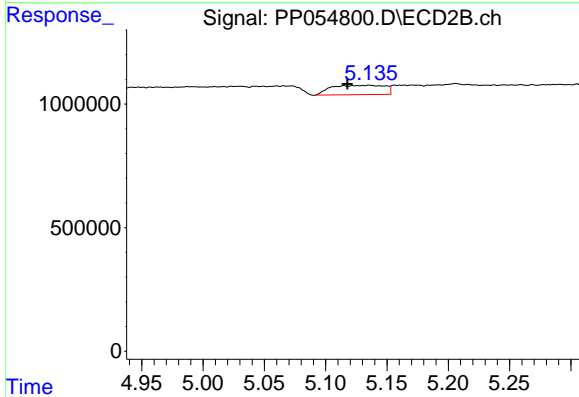
R.T.: 4.947 min
 Delta R.T.: 0.002 min
 Response: 578428
 Conc: 33.39 ng/ml



#15 AR-1232-5

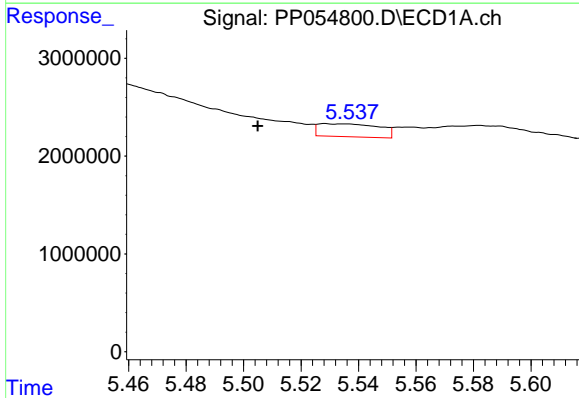
R.T.: 5.787 min
 Delta R.T.: 0.007 min
 Response: 4050366
 Conc: 235.41 ng/ml

Instrument :
 ECD_P
 ClientSampleId :



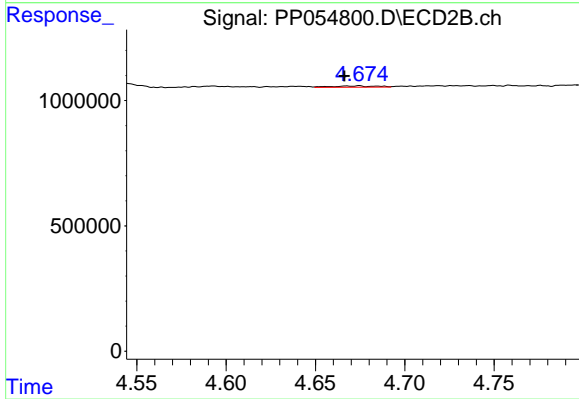
#15 AR-1232-5

R.T.: 5.135 min
 Delta R.T.: 0.017 min
 Response: 1159640
 Conc: 61.27 ng/ml



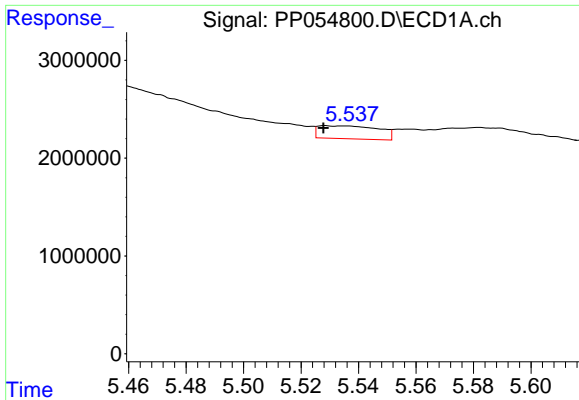
#16 AR-1242-1

R.T.: 5.529 min
 Delta R.T.: 0.024 min
 Response: 1935359
 Conc: 35.79 ng/ml



#16 AR-1242-1

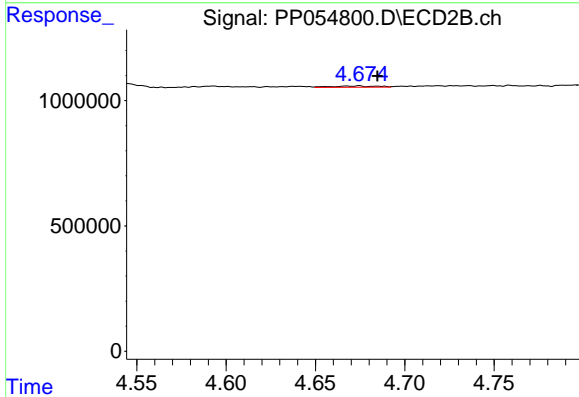
R.T.: 4.674 min
 Delta R.T.: 0.008 min
 Response: 85411
 Conc: 2.02 ng/ml



#17 AR-1242-2

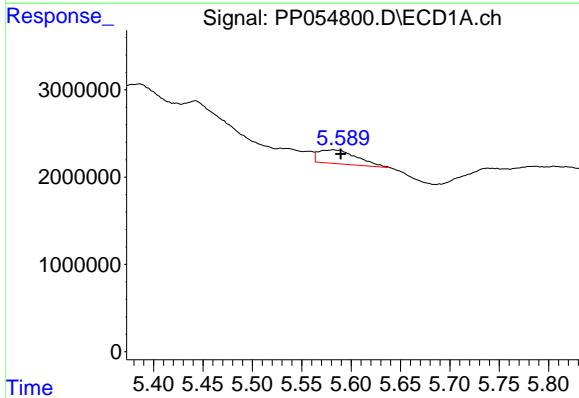
R.T.: 5.529 min
 Delta R.T.: 0.000 min
 Response: 1935359
 Conc: 24.81 ng/ml

Instrument :
 ECD_P
 ClientSampleId :



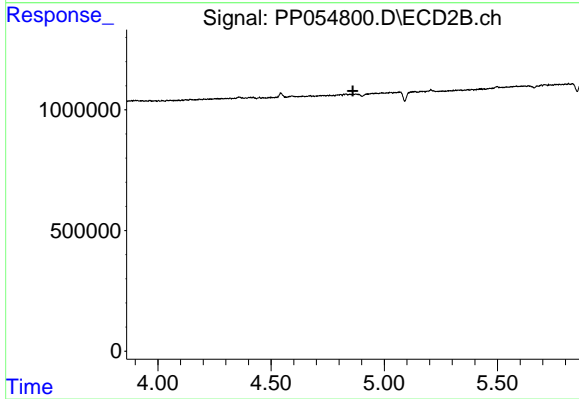
#17 AR-1242-2

R.T.: 4.674 min
 Delta R.T.: -0.010 min
 Response: 85411
 Conc: 1.45 ng/ml



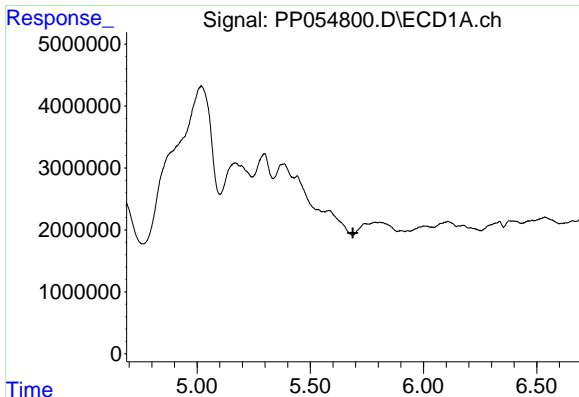
#18 AR-1242-3

R.T.: 5.582 min
 Delta R.T.: -0.008 min
 Response: 3708134
 Conc: 75.48 ng/ml



#18 AR-1242-3

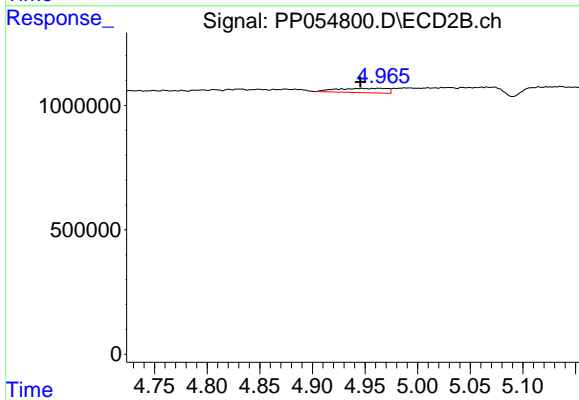
R.T.: 0.000 min
 Exp R.T. : 4.862 min
 Response: 0
 Conc: N.D.



#19 AR-1242-4

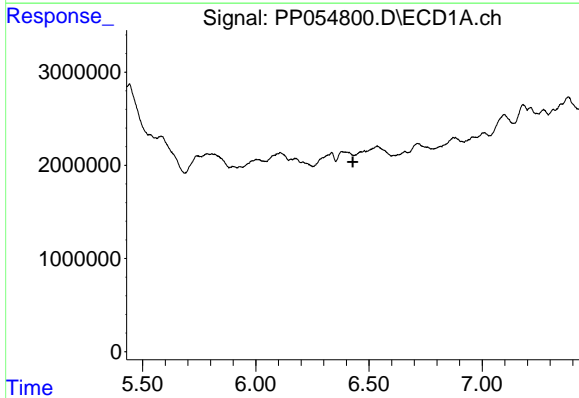
R.T.: 0.000 min
 Exp R.T.: 5.688 min
 Response: 0
 Conc: N.D.

Instrument :
 ECD_P
 ClientSampleId :



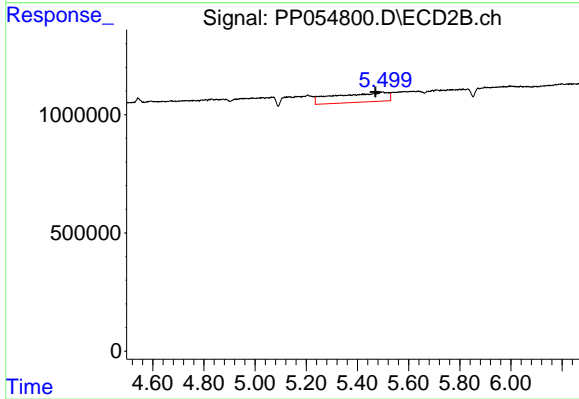
#19 AR-1242-4

R.T.: 4.947 min
 Delta R.T.: 0.001 min
 Response: 578428
 Conc: 16.49 ng/ml



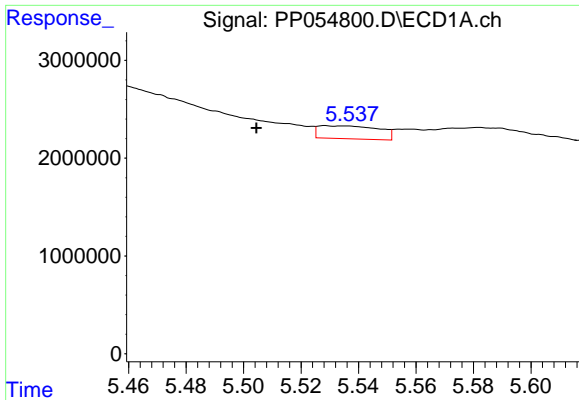
#20 AR-1242-5

R.T.: 0.000 min
 Exp R.T.: 6.429 min
 Response: 0
 Conc: N.D.



#20 AR-1242-5

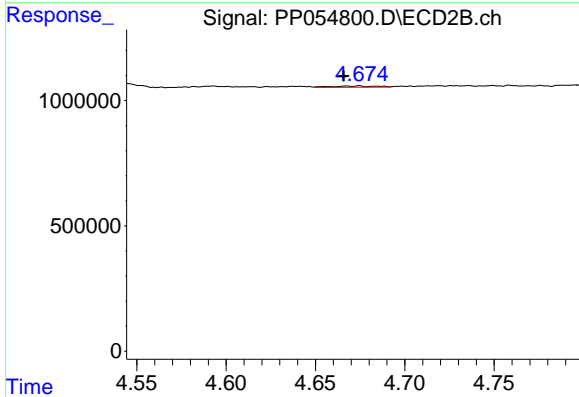
R.T.: 5.498 min
 Delta R.T.: 0.028 min
 Response: 5797398
 Conc: 152.52 ng/ml



#21 AR-1248-1

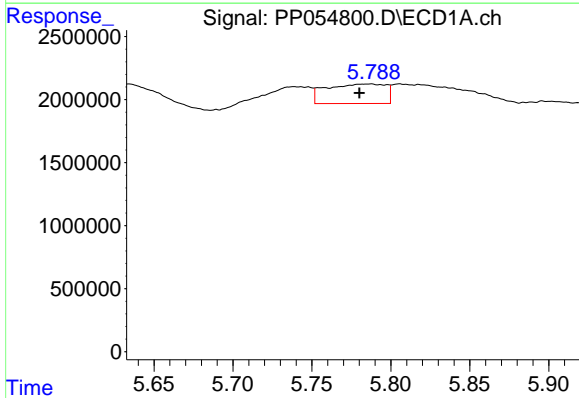
R.T.: 5.529 min
 Delta R.T.: 0.024 min
 Response: 1935359
 Conc: 48.60 ng/ml

Instrument :
 ECD_P
 ClientSampleId :



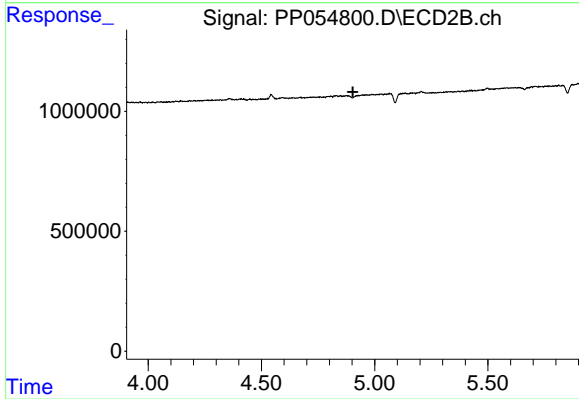
#21 AR-1248-1

R.T.: 4.674 min
 Delta R.T.: 0.009 min
 Response: 85411
 Conc: 2.73 ng/ml



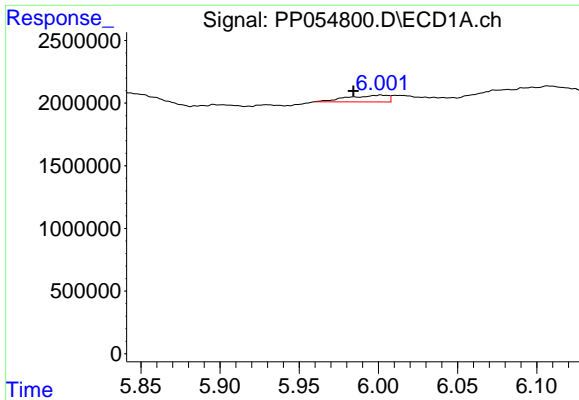
#22 AR-1248-2

R.T.: 5.787 min
 Delta R.T.: 0.007 min
 Response: 4050366
 Conc: 68.24 ng/ml



#22 AR-1248-2

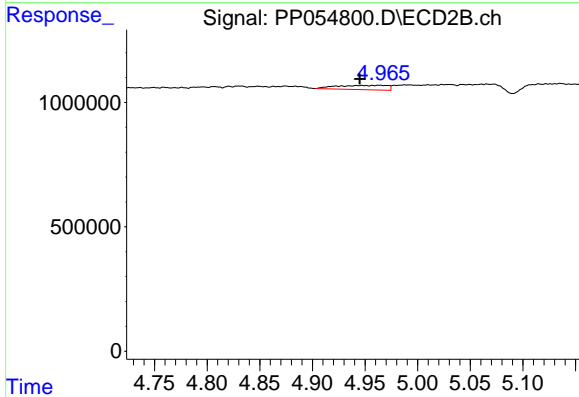
R.T.: 0.000 min
 Exp R.T. : 4.904 min
 Response: 0
 Conc: N.D.



#23 AR-1248-3

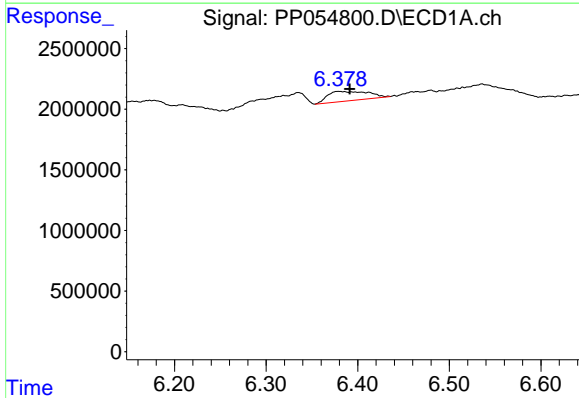
R.T.: 6.002 min
 Delta R.T.: 0.017 min
 Response: 939714
 Conc: 14.24 ng/ml

Instrument :
 ECD_P
 ClientSampleId :



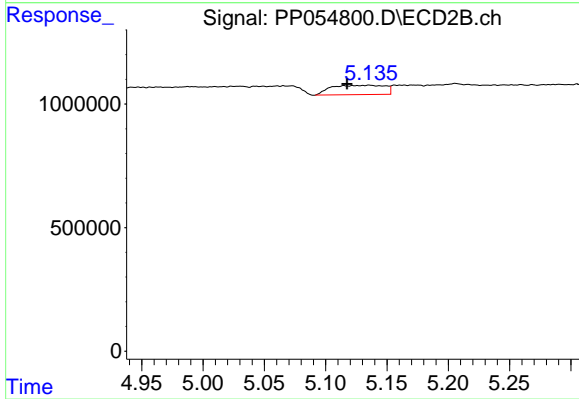
#23 AR-1248-3

R.T.: 4.947 min
 Delta R.T.: 0.002 min
 Response: 578428
 Conc: 11.38 ng/ml



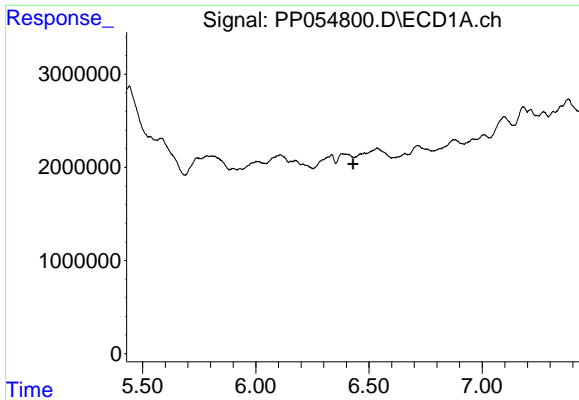
#24 AR-1248-4

R.T.: 6.379 min
 Delta R.T.: -0.012 min
 Response: 2407675
 Conc: 36.03 ng/ml



#24 AR-1248-4

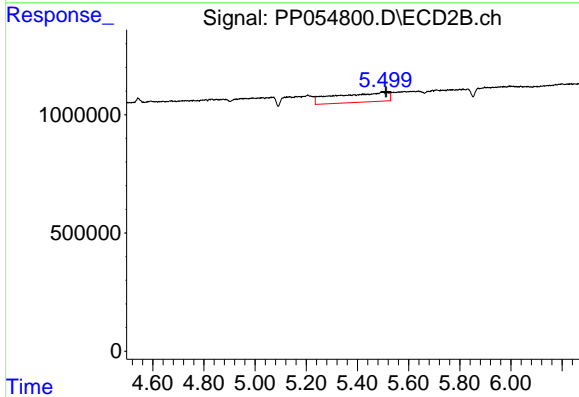
R.T.: 5.135 min
 Delta R.T.: 0.017 min
 Response: 1159640
 Conc: 19.51 ng/ml



#25 AR-1248-5

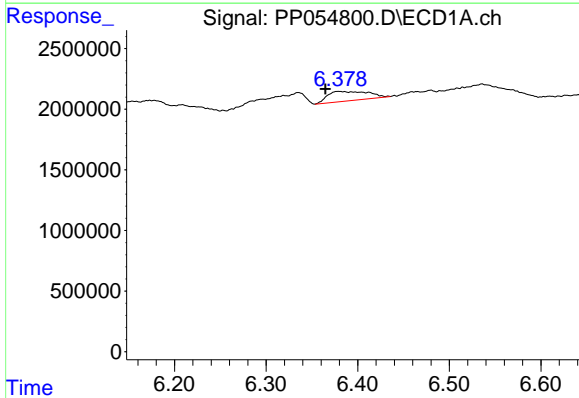
R.T.: 0.000 min
 Exp R.T.: 6.429 min
 Response: 0
 Conc: N.D.

Instrument :
 ECD_P
 ClientSampleId :



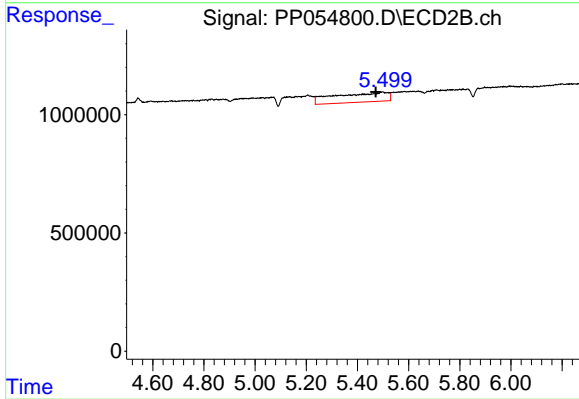
#25 AR-1248-5

R.T.: 5.498 min
 Delta R.T.: -0.013 min
 Response: 5797398
 Conc: 114.10 ng/ml



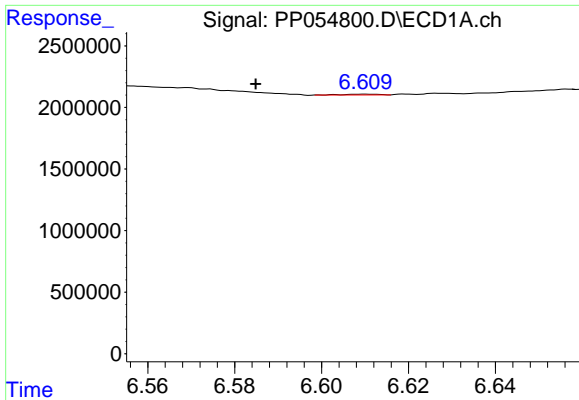
#26 AR-1254-1

R.T.: 6.379 min
 Delta R.T.: 0.014 min
 Response: 2407675
 Conc: 34.06 ng/ml



#26 AR-1254-1

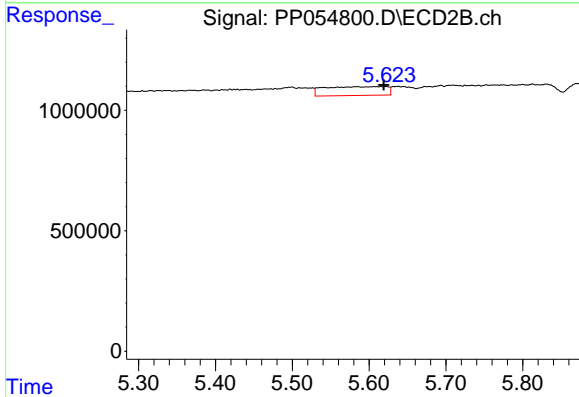
R.T.: 5.498 min
 Delta R.T.: 0.027 min
 Response: 5797398
 Conc: 68.19 ng/ml



#27 AR-1254-2

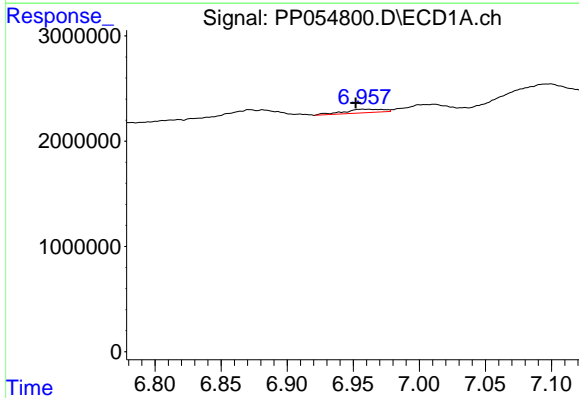
R.T.: 6.610 min
 Delta R.T.: 0.025 min
 Response: 37396
 Conc: 0.39 ng/ml

Instrument :
 ECD_P
 ClientSampleId :



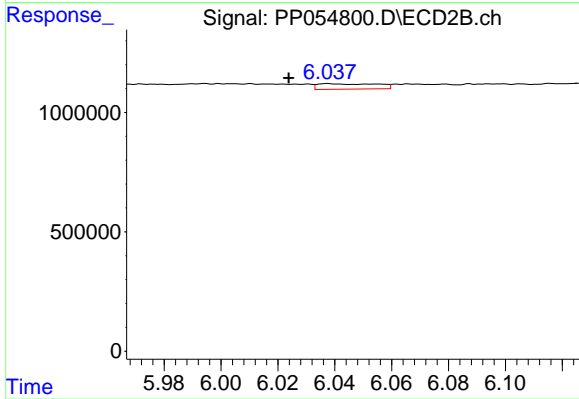
#27 AR-1254-2

R.T.: 5.620 min
 Delta R.T.: 0.001 min
 Response: 2053969
 Conc: 28.23 ng/ml



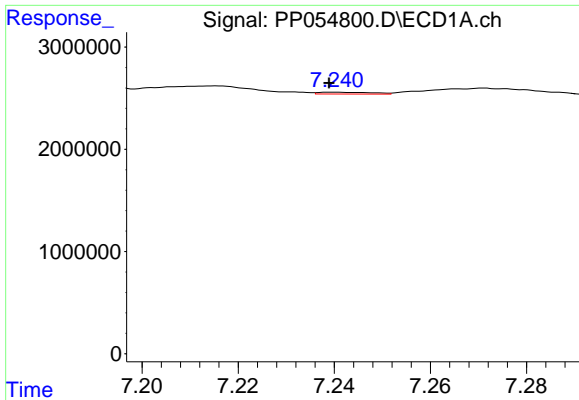
#28 AR-1254-3

R.T.: 6.957 min
 Delta R.T.: 0.005 min
 Response: 716845
 Conc: 8.26 ng/ml



#28 AR-1254-3

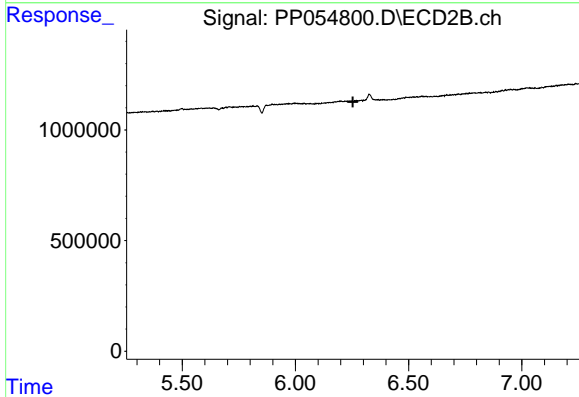
R.T.: 6.038 min
 Delta R.T.: 0.014 min
 Response: 332861
 Conc: 2.94 ng/ml



#29 AR-1254-4

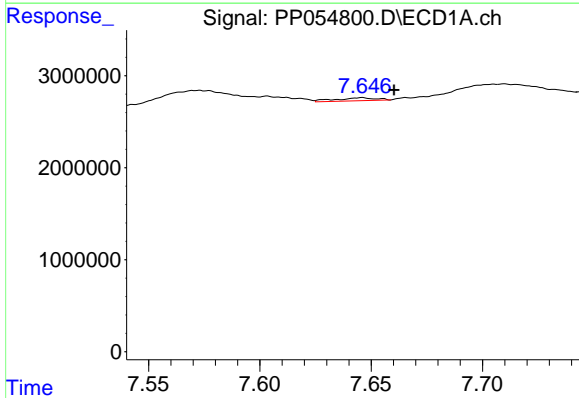
R.T.: 7.240 min
 Delta R.T.: 0.001 min
 Response: 138202
 Conc: 2.21 ng/ml

Instrument :
 ECD_P
 ClientSampleId :



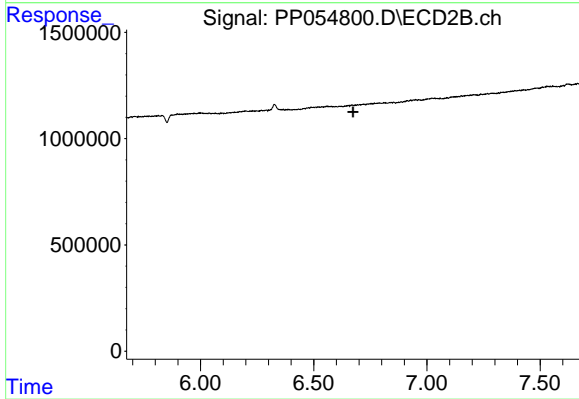
#29 AR-1254-4

R.T.: 0.000 min
 Exp R.T. : 6.254 min
 Response: 0
 Conc: N.D.



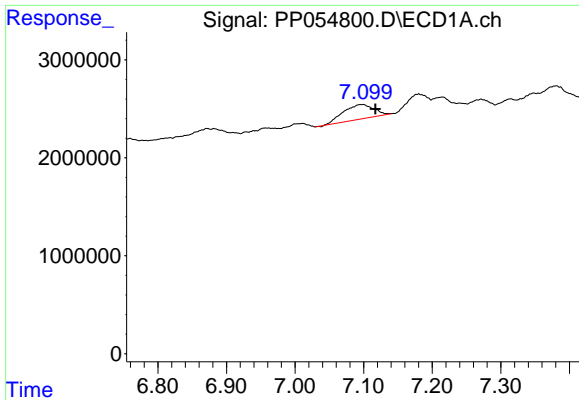
#30 AR-1254-5

R.T.: 7.646 min
 Delta R.T.: -0.014 min
 Response: 408002
 Conc: 5.83 ng/ml



#30 AR-1254-5

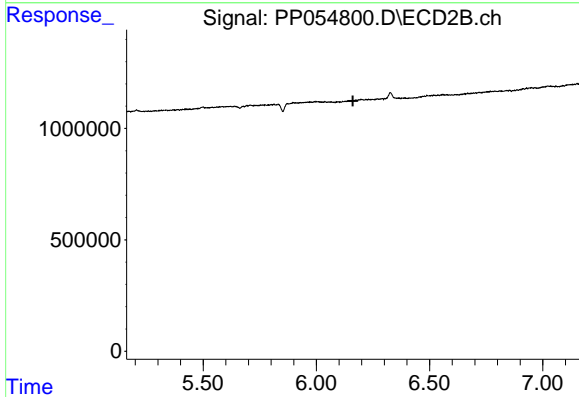
R.T.: 0.000 min
 Exp R.T. : 6.673 min
 Response: 0
 Conc: N.D.



#31 AR-1260-1

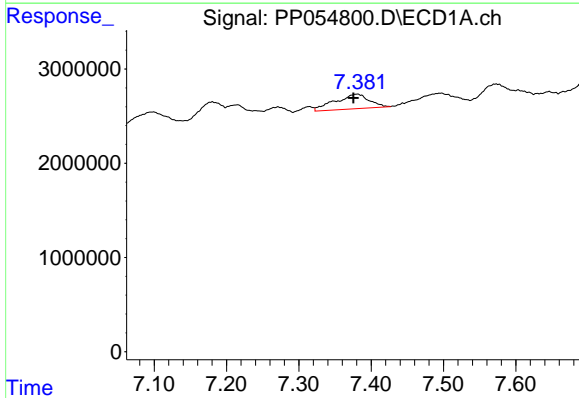
R.T.: 7.099 min
 Delta R.T.: -0.018 min
 Response: 4574756
 Conc: 66.60 ng/ml

Instrument :
 ECD_P
 ClientSampleId :



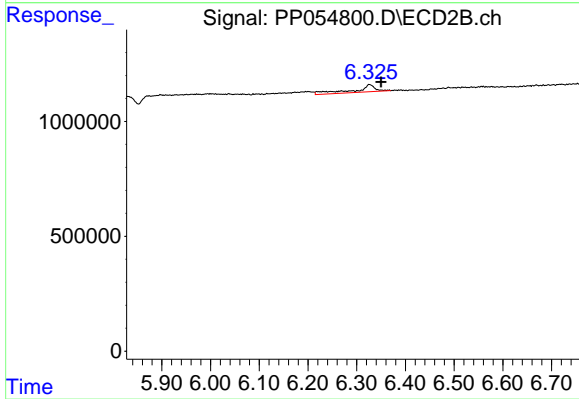
#31 AR-1260-1

R.T.: 0.000 min
 Exp R.T. : 6.161 min
 Response: 0
 Conc: N.D.



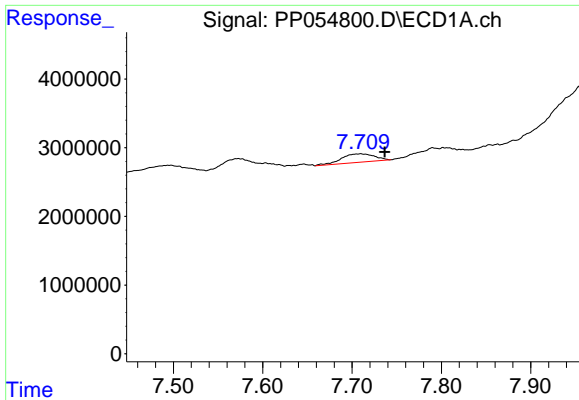
#32 AR-1260-2

R.T.: 7.381 min
 Delta R.T.: 0.005 min
 Response: 5058059
 Conc: 63.25 ng/ml



#32 AR-1260-2

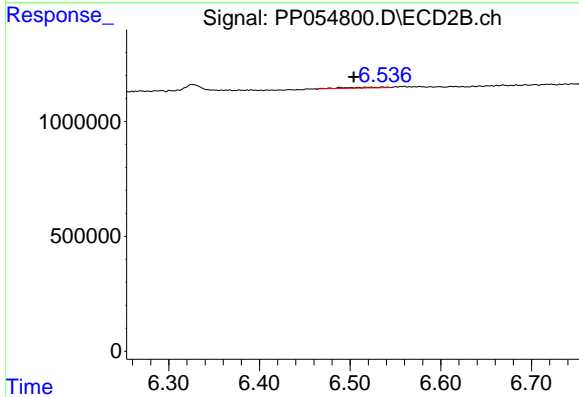
R.T.: 6.327 min
 Delta R.T.: -0.023 min
 Response: 968657
 Conc: 10.52 ng/ml



#33 AR-1260-3

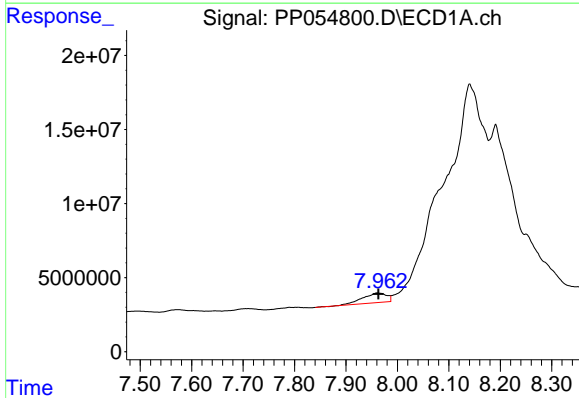
R.T.: 7.710 min
 Delta R.T.: -0.027 min
 Response: 3169441
 Conc: 52.61 ng/ml

Instrument :
 ECD_P
 ClientSampleId :



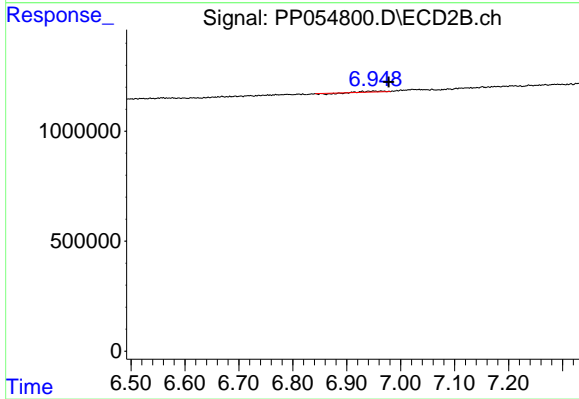
#33 AR-1260-3

R.T.: 6.520 min
 Delta R.T.: 0.016 min
 Response: 101012
 Conc: 1.12 ng/ml



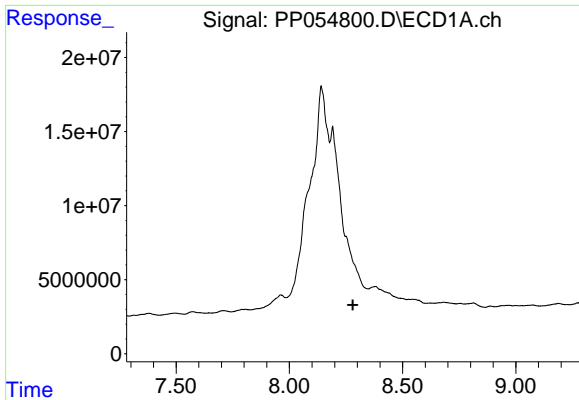
#34 AR-1260-4

R.T.: 7.961 min
 Delta R.T.: -0.002 min
 Response: 21209864
 Conc: 303.13 ng/ml



#34 AR-1260-4

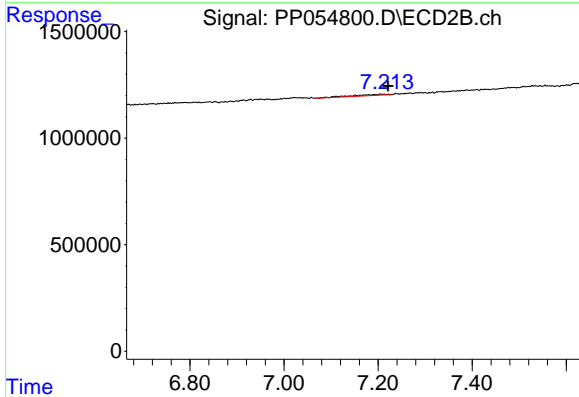
R.T.: 6.950 min
 Delta R.T.: -0.028 min
 Response: 30972
 Conc: 0.41 ng/ml



#35 AR-1260-5

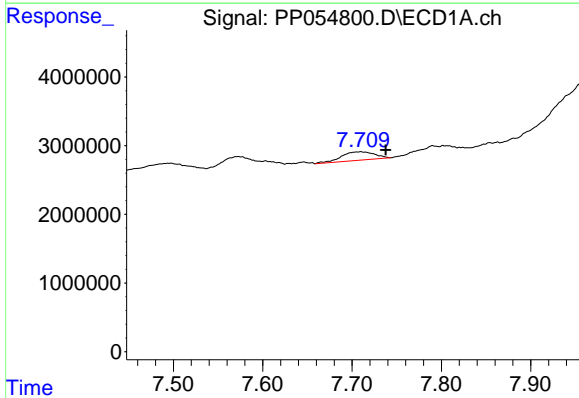
R.T.: 0.000 min
 Exp R.T.: 8.281 min
 Response: 0
 Conc: N.D.

Instrument :
 ECD_P
 ClientSampleId :



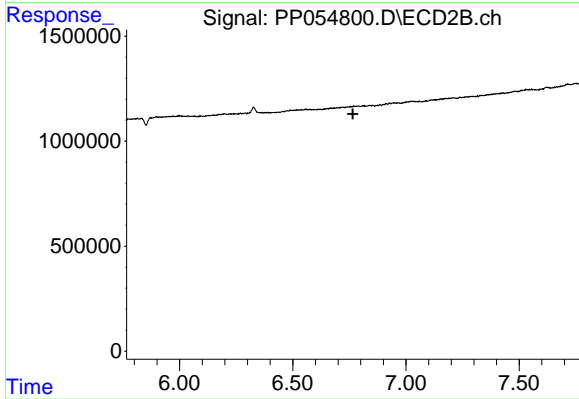
#35 AR-1260-5

R.T.: 7.208 min
 Delta R.T.: -0.013 min
 Response: 272104
 Conc: 1.71 ng/ml



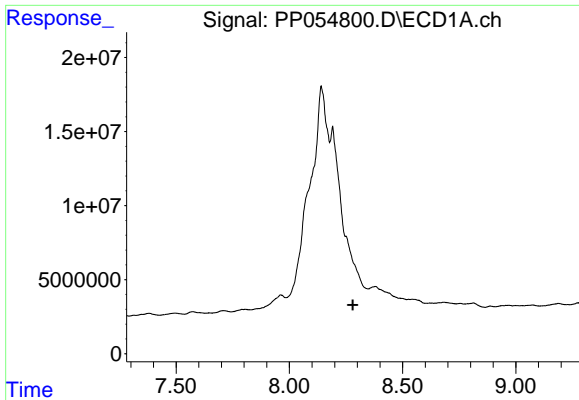
#36 AR-1262-1

R.T.: 7.710 min
 Delta R.T.: -0.028 min
 Response: 3169441
 Conc: 38.72 ng/ml



#36 AR-1262-1

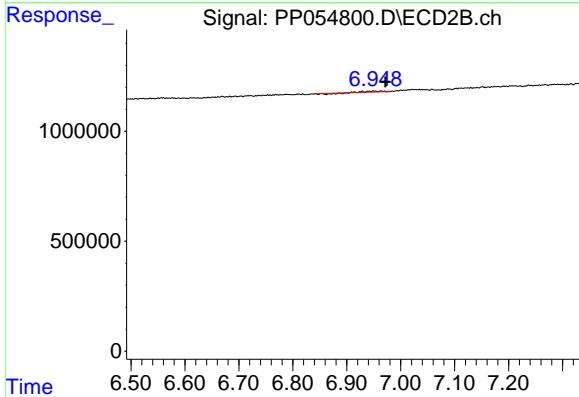
R.T.: 6.790 min
 Delta R.T.: 0.024 min
 Response: -159122
 Conc: N.D.



#37 AR-1262-2

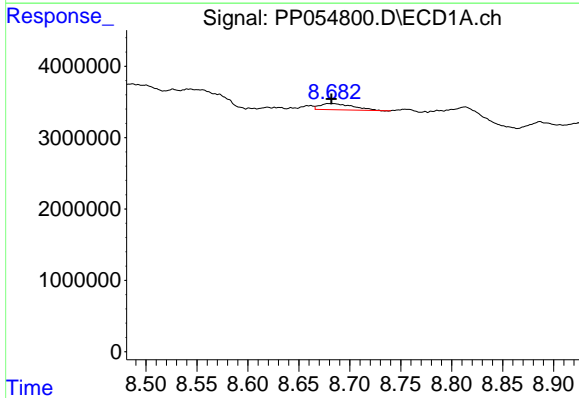
R.T.: 0.000 min
 Exp R.T.: 8.280 min
 Response: 0
 Conc: N.D.

Instrument :
 ECD_P
 ClientSampleId :



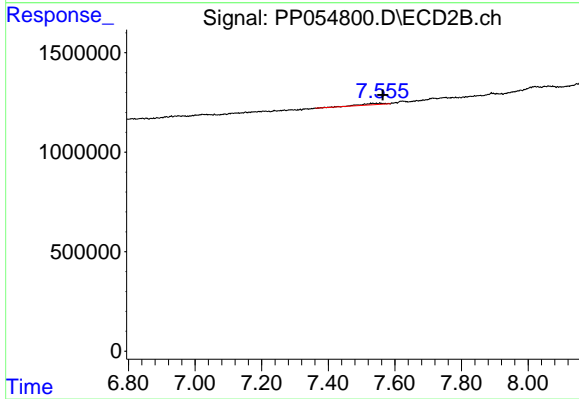
#37 AR-1262-2

R.T.: 6.950 min
 Delta R.T.: -0.022 min
 Response: 30972
 Conc: 0.34 ng/ml



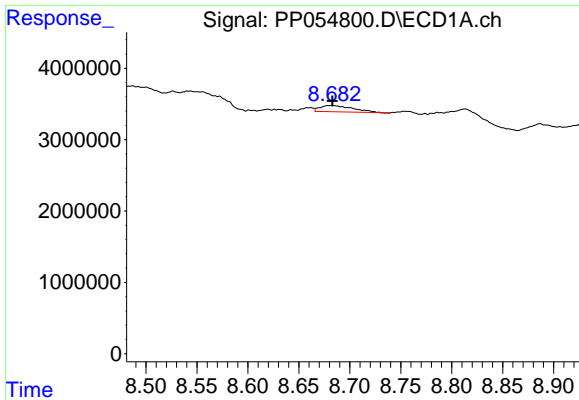
#39 AR-1262-4

R.T.: 8.682 min
 Delta R.T.: 0.000 min
 Response: 1924882
 Conc: 38.72 ng/ml



#39 AR-1262-4

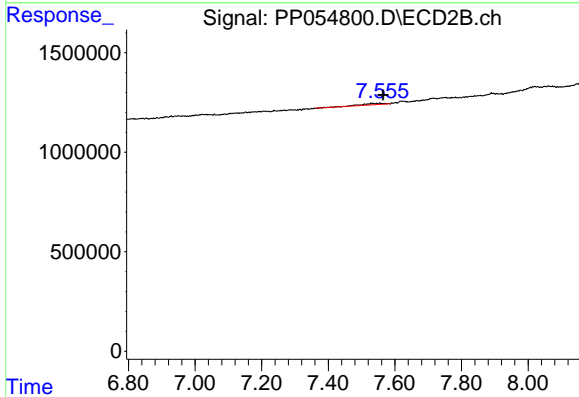
R.T.: 7.544 min
 Delta R.T.: -0.020 min
 Response: 342924
 Conc: 2.65 ng/ml



#42 AR-1268-2

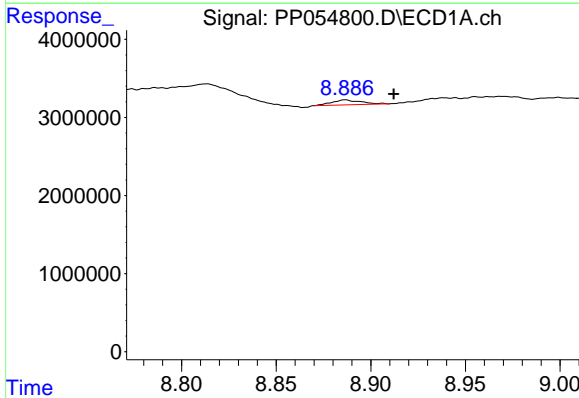
R.T.: 8.682 min
 Delta R.T.: 0.000 min
 Response: 1924882
 Conc: 11.36 ng/ml

Instrument :
 ECD_P
 ClientSampleId :



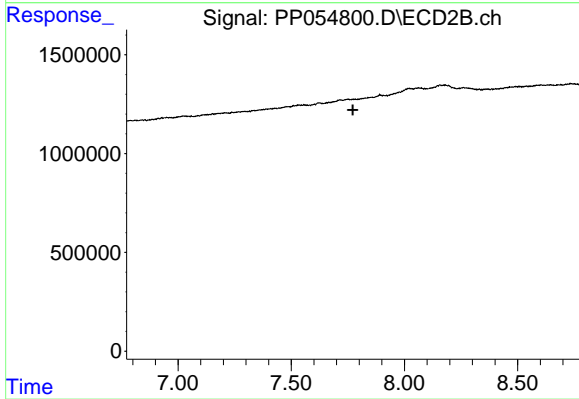
#42 AR-1268-2

R.T.: 7.544 min
 Delta R.T.: -0.021 min
 Response: 342924
 Conc: 1.75 ng/ml



#43 AR-1268-3

R.T.: 8.887 min
 Delta R.T.: -0.026 min
 Response: 684140
 Conc: 4.59 ng/ml



#43 AR-1268-3

R.T.: 0.000 min
 Exp R.T. : 7.772 min
 Response: 0
 Conc: N.D.