

Data Path : Z:\pestpcbsrv\HPCHEM1\ECD_P\Data\PP012521\
 Data File : PP032919.D
 Signal(s) : Signal #1: ECD1A.CH Signal #2: ECD2B.CH
 Acq On : 25 Jan 2021 10:44
 Operator : DD\AJ
 Sample : M1207-01
 Misc :
 ALS Vial : 6 Sample Multiplier: 1

Instrument :
 ECD_P
 ClientSampleId :
 FK-SF-03-010-A

Integration File signal 1: autoint1.e
 Integration File signal 2: autoint2.e
 Quant Time: Jan 25 16:38:13 2021
 Quant Method : Z:\pestpcbsrv\HPCHEM1\ECD_P\methods\PP011421.M
 Quant Title : GC EXTRACTABLES
 QLast Update : Thu Jan 14 08:12:55 2021
 Response via : Initial Calibration
 Integrator: ChemStation 6890 Scale Mode: Small noise peaks clipped

Volume Inj. : 2 µl
 Signal #1 Phase : ZB-MR1 Signal #2 Phase: ZB-MR2
 Signal #1 Info : 30Mx0.32mmx 0.50µ Signal #2 Info : 30M x 0.32mm x 0.25µm

Compound	RT#1	RT#2	Resp#1	Resp#2	ng/ml	ng/ml

System Monitoring Compounds						
1) SA Tetrachlo...	4.737	4.006	1195938	989904	20.591	21.044
2) SA Decachlor...	10.569	9.283	924079	793109	23.422	21.171
Target Compounds						
26) L6 AR-1254-1	6.941	6.123	1235740	1447927	744.038	707.233
27) L6 AR-1254-2	7.169	6.281	1429356	802397	568.340	456.884
28) L6 AR-1254-3	7.547	6.700	973482	876255	361.308	305.108
29) L6 AR-1254-4	7.840	6.941	359356	367033	182.432	221.649
30) L6 AR-1254-5	8.267	7.367	475048	668306	227.792	276.288

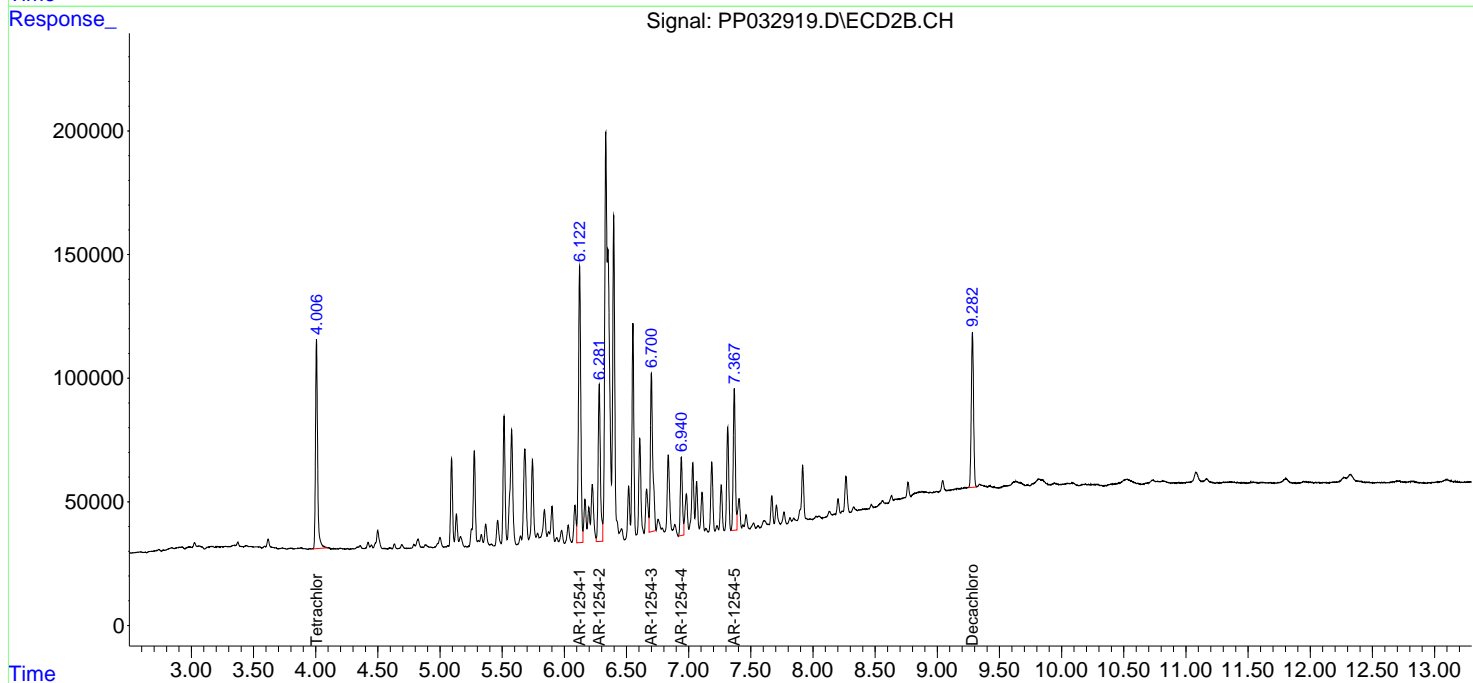
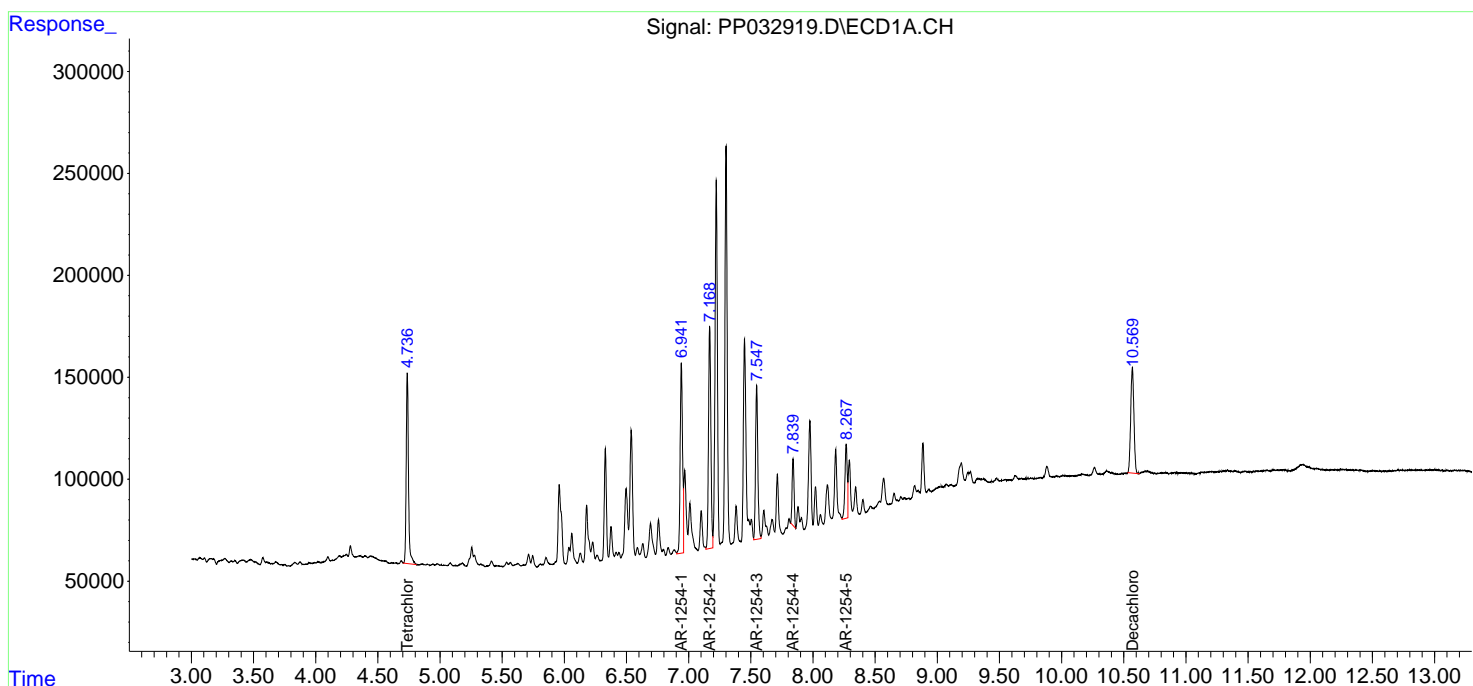
(f)=RT Delta > 1/2 Window (#)=Amounts differ by > 25% (m)=manual int.

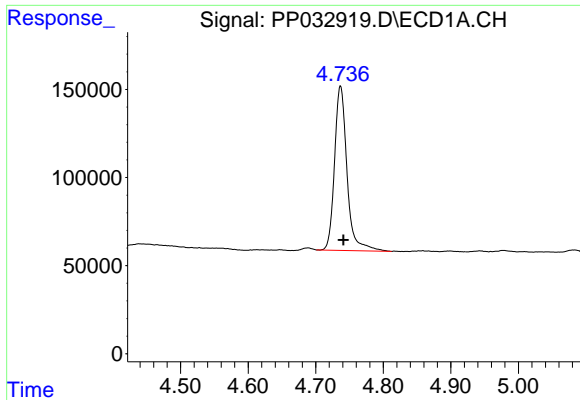
Data Path : Z:\pestpcbsrv\HPCHEM1\ECD_P\Data\PP012521\
 Data File : PP032919.D
 Signal(s) : Signal #1: ECD1A.CH Signal #2: ECD2B.CH
 Acq On : 25 Jan 2021 10:44
 Operator : DD\AJ
 Sample : M1207-01
 Misc :
 ALS Vial : 6 Sample Multiplier: 1

Instrument :
 ECD_P
 ClientSampleId :
 FK-SF-03-010-A

Integration File signal 1: autoint1.e
 Integration File signal 2: autoint2.e
 Quant Time: Jan 25 16:38:13 2021
 Quant Method : Z:\pestpcbsrv\HPCHEM1\ECD_P\methods\PP011421.M
 Quant Title : GC EXTRACTABLES
 QLast Update : Thu Jan 14 08:12:55 2021
 Response via : Initial Calibration
 Integrator: ChemStation 6890 Scale Mode: Small noise peaks clipped

Volume Inj. : 2 µl
 Signal #1 Phase : ZB-MR1 Signal #2 Phase: ZB-MR2
 Signal #1 Info : 30Mx0.32mmx 0.50µ Signal #2 Info : 30M x 0.32mm x 0.25µm

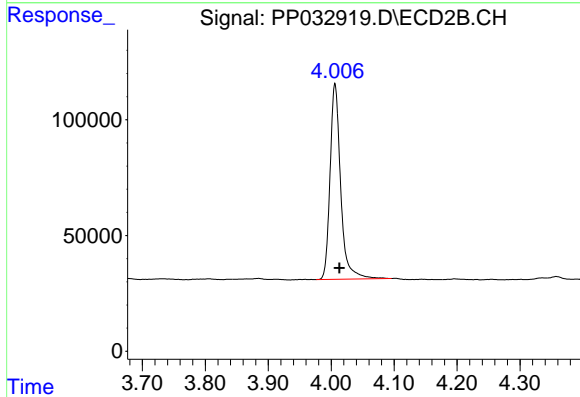




#1 Tetrachloro-m-xylene

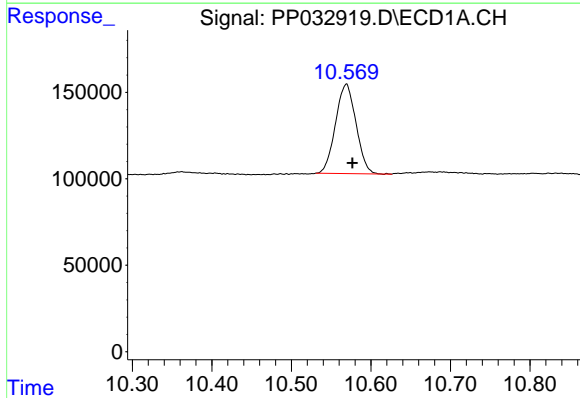
R.T.: 4.737 min
 Delta R.T.: -0.004 min
 Response: 1195938
 Conc: 20.59 ng/ml

Instrument :
 ECD_P
 ClientSampleId :
 FK-SF-03-010-A



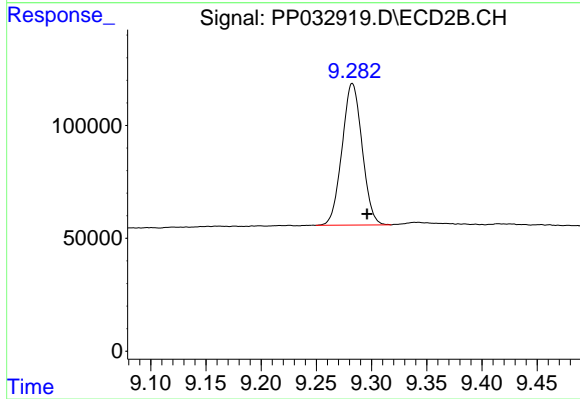
#1 Tetrachloro-m-xylene

R.T.: 4.006 min
 Delta R.T.: -0.007 min
 Response: 989904
 Conc: 21.04 ng/ml



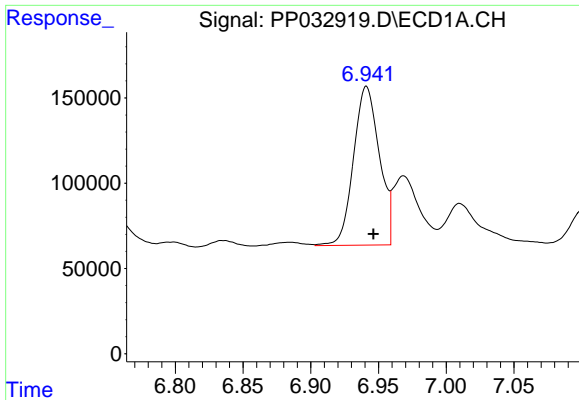
#2 Decachlorobiphenyl

R.T.: 10.569 min
 Delta R.T.: -0.008 min
 Response: 924079
 Conc: 23.42 ng/ml



#2 Decachlorobiphenyl

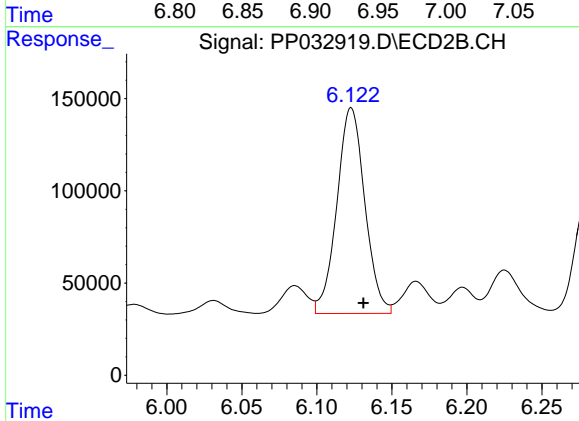
R.T.: 9.283 min
 Delta R.T.: -0.013 min
 Response: 793109
 Conc: 21.17 ng/ml



#26 AR-1254-1

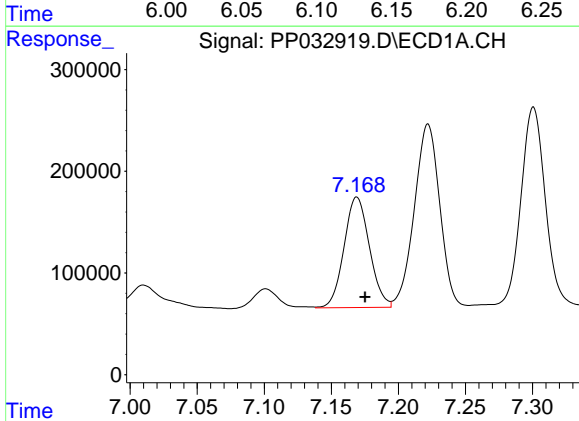
R.T.: 6.941 min
 Delta R.T.: -0.005 min
 Response: 1235740
 Conc: 744.04 ng/ml

Instrument :
 ECD_P
 ClientSampleId :
 FK-SF-03-010-A



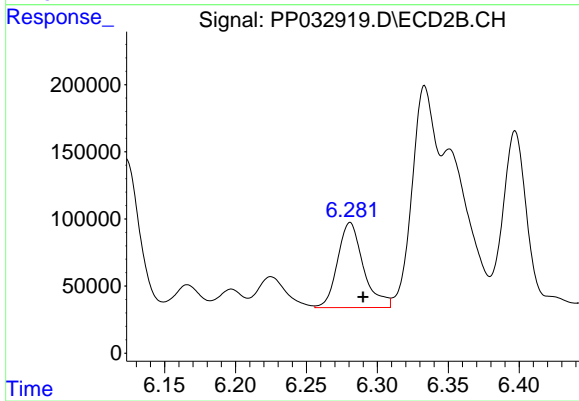
#26 AR-1254-1

R.T.: 6.123 min
 Delta R.T.: -0.008 min
 Response: 1447927
 Conc: 707.23 ng/ml



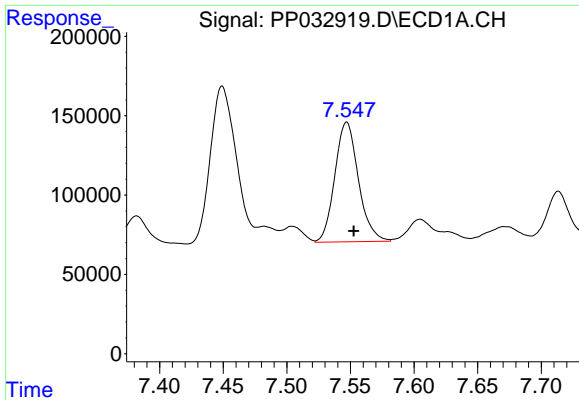
#27 AR-1254-2

R.T.: 7.169 min
 Delta R.T.: -0.006 min
 Response: 1429356
 Conc: 568.34 ng/ml



#27 AR-1254-2

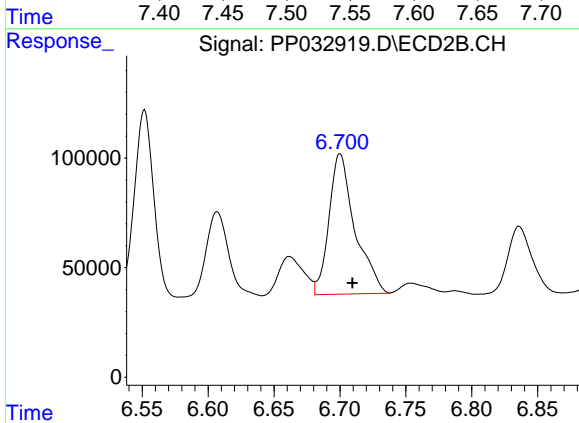
R.T.: 6.281 min
 Delta R.T.: -0.009 min
 Response: 802397
 Conc: 456.88 ng/ml



#28 AR-1254-3

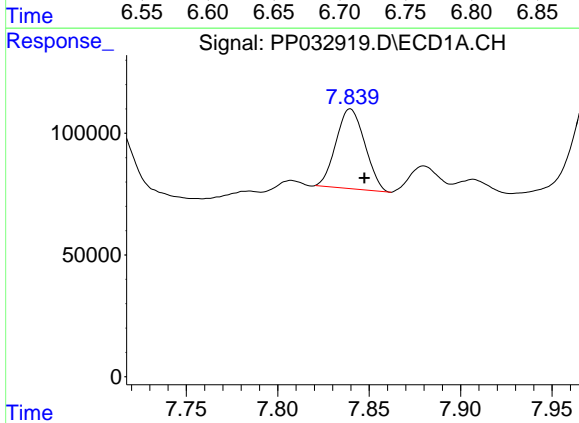
R.T.: 7.547 min
 Delta R.T.: -0.006 min
 Response: 973482
 Conc: 361.31 ng/ml

Instrument :
 ECD_P
 ClientSampleId :
 FK-SF-03-010-A



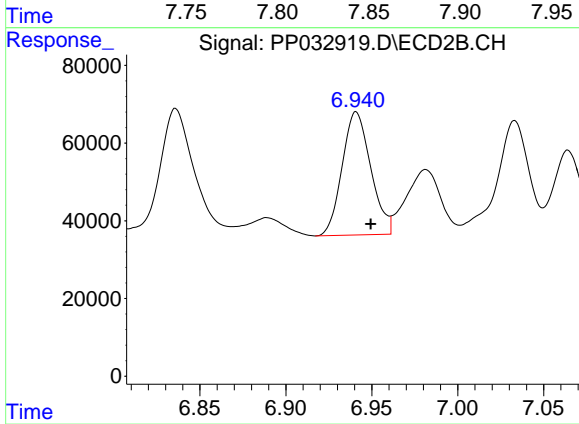
#28 AR-1254-3

R.T.: 6.700 min
 Delta R.T.: -0.010 min
 Response: 876255
 Conc: 305.11 ng/ml



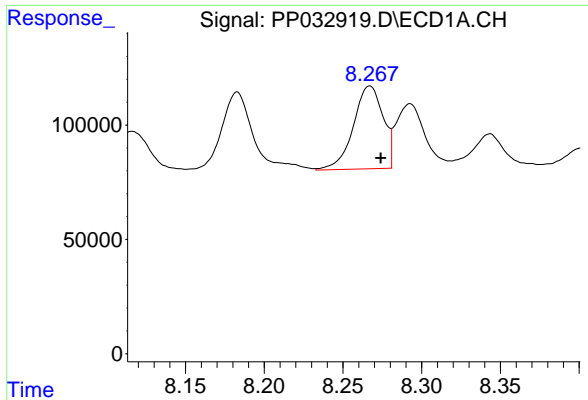
#29 AR-1254-4

R.T.: 7.840 min
 Delta R.T.: -0.008 min
 Response: 359356
 Conc: 182.43 ng/ml



#29 AR-1254-4

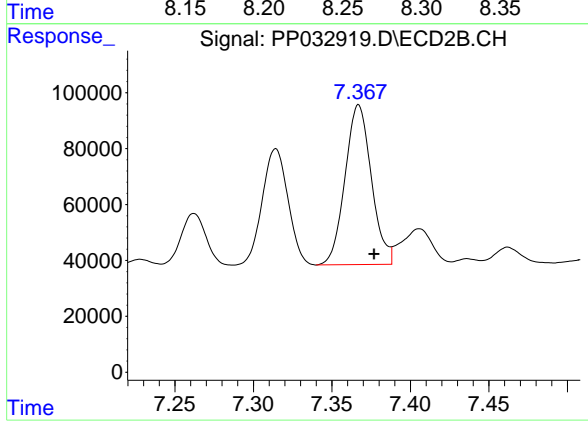
R.T.: 6.941 min
 Delta R.T.: -0.008 min
 Response: 367033
 Conc: 221.65 ng/ml



#30 AR-1254-5

R.T.: 8.267 min
Delta R.T.: -0.007 min
Response: 475048
Conc: 227.79 ng/ml

Instrument :
ECD_P
ClientSampleId :
FK-SF-03-010-A



#30 AR-1254-5

R.T.: 7.367 min
Delta R.T.: -0.010 min
Response: 668306
Conc: 276.29 ng/ml