

Data Path : Z:\pestpcbsrv\HPCHEM1\ECD\_P\Data\PP012521\  
 Data File : PP032925.D  
 Signal(s) : Signal #1: ECD1A.CH Signal #2: ECD2B.CH  
 Acq On : 25 Jan 2021 12:25  
 Operator : DD\AJ  
 Sample : M1213-01MS  
 Misc :  
 ALS Vial : 12 Sample Multiplier: 1

Instrument :  
 ECD\_P  
 ClientSampleId :  
 IDW-BR2-SO-012121MS

Integration File signal 1: autoint1.e  
 Integration File signal 2: autoint2.e  
 Quant Time: Jan 25 16:40:43 2021  
 Quant Method : Z:\pestpcbsrv\HPCHEM1\ECD\_P\methods\PP011421.M  
 Quant Title : GC EXTRACTABLES  
 QLast Update : Thu Jan 14 08:12:55 2021  
 Response via : Initial Calibration  
 Integrator: ChemStation 6890 Scale Mode: Small noise peaks clipped

Volume Inj. : 2 µl  
 Signal #1 Phase : ZB-MR1 Signal #2 Phase: ZB-MR2  
 Signal #1 Info : 30Mx0.32mmx 0.50µ Signal #2 Info : 30M x 0.32mm x 0.25µm

Compound	RT#1	RT#2	Resp#1	Resp#2	ng/ml	ng/ml
-----						
System Monitoring Compounds						
1) SA Tetrachlo...	4.738	4.008	1453715	1238382	25.029	26.326
2) SA Decachlor...	10.571	9.284	956537	850761	24.245	22.710
Target Compounds						
3) L1 AR-1016-1	6.039	5.255	747505	790340	460.120	581.854 #
4) L1 AR-1016-2	6.062	5.275	1093378	1136206	442.485	560.176 #
5) L1 AR-1016-3	6.127	5.465	660713	625113	444.760	572.122 #
6) L1 AR-1016-4	6.232	5.517	529003	448582	425.025	554.130 #
7) L1 AR-1016-5	6.545	5.744	477094	582868	420.398	540.972 #
31) L7 AR-1260-1	7.715	6.837	874912	922944	458.943	483.822
32) L7 AR-1260-2	7.980	7.034	1159542	1077770	480.106	472.943
33) L7 AR-1260-3	8.345	7.188	811996	1042869	402.855	476.910
34) L7 AR-1260-4	8.573	7.670	872002	754949	423.210	413.147
35) L7 AR-1260-5	8.886	7.918	1985764	1814763	438.365	421.874

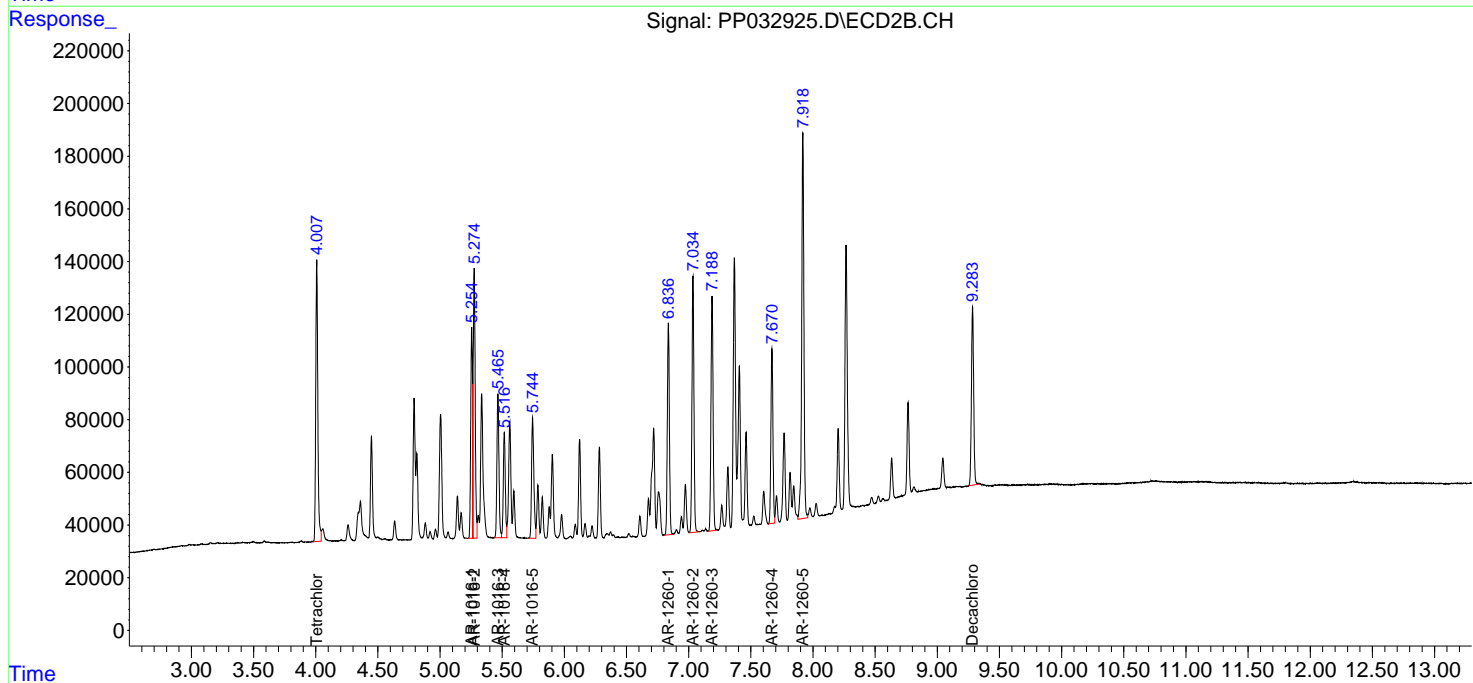
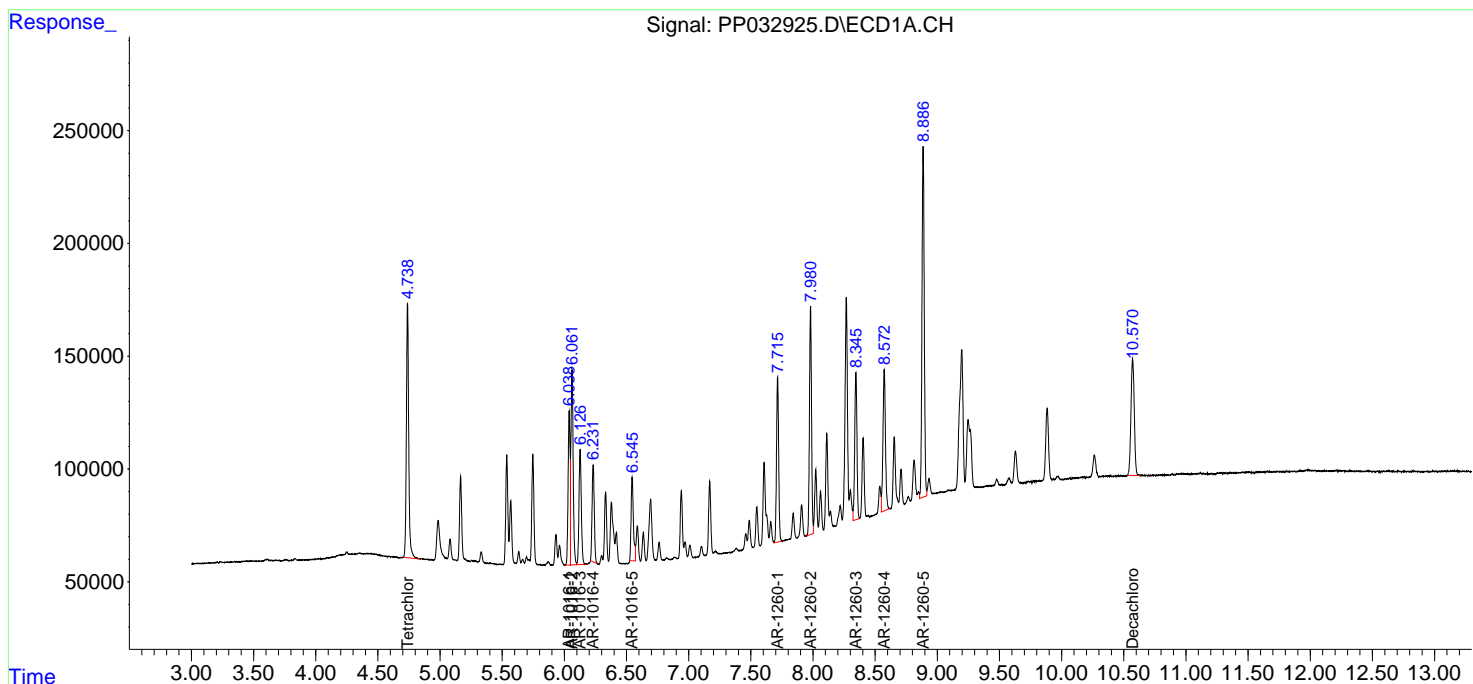
(f)=RT Delta > 1/2 Window (#)=Amounts differ by > 25% (m)=manual int.

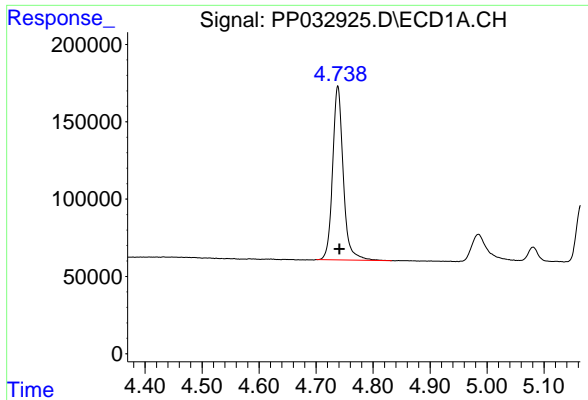
Data Path : Z:\pestpcbsrv\HPCHEM1\ECD\_P\Data\PP012521\  
 Data File : PP032925.D  
 Signal(s) : Signal #1: ECD1A.CH Signal #2: ECD2B.CH  
 Acq On : 25 Jan 2021 12:25  
 Operator : DD\AJ  
 Sample : M1213-01MS  
 Misc :  
 ALS Vial : 12 Sample Multiplier: 1

Instrument :  
 ECD\_P  
 ClientSampleId :  
 IDW-BR2-SO-012121MS

Integration File signal 1: autoint1.e  
 Integration File signal 2: autoint2.e  
 Quant Time: Jan 25 16:40:43 2021  
 Quant Method : Z:\pestpcbsrv\HPCHEM1\ECD\_P\methods\PP011421.M  
 Quant Title : GC EXTRACTABLES  
 QLast Update : Thu Jan 14 08:12:55 2021  
 Response via : Initial Calibration  
 Integrator: ChemStation 6890 Scale Mode: Small noise peaks clipped

Volume Inj. : 2 µl  
 Signal #1 Phase : ZB-MR1 Signal #2 Phase: ZB-MR2  
 Signal #1 Info : 30Mx0.32mmx 0.50µ Signal #2 Info : 30M x 0.32mm x 0.25µm

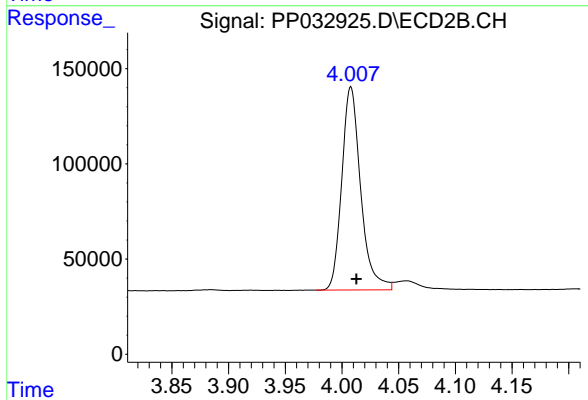




#1 Tetrachloro-m-xylene

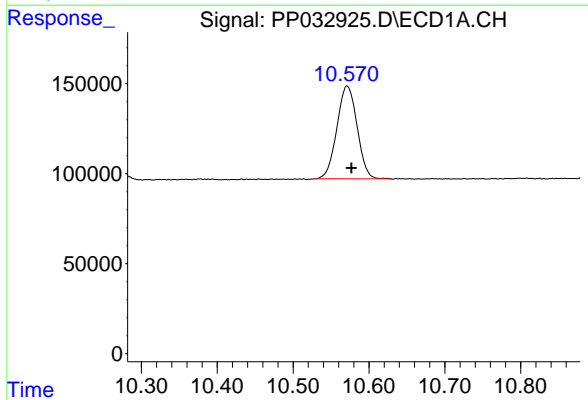
R.T.: 4.738 min  
 Delta R.T.: -0.003 min  
 Response: 1453715  
 Conc: 25.03 ng/ml

Instrument :  
 ECD\_P  
 ClientSampleId :  
 IDW-BR2-SO-012121MS



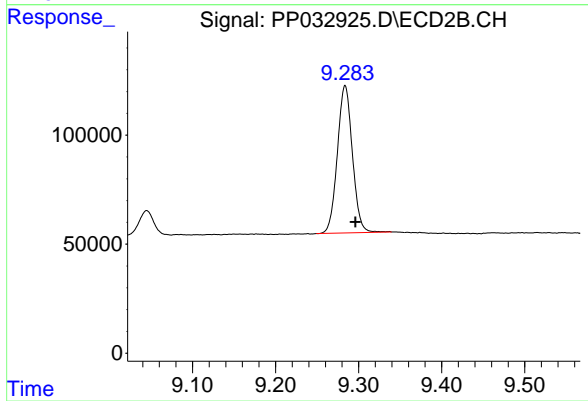
#1 Tetrachloro-m-xylene

R.T.: 4.008 min  
 Delta R.T.: -0.005 min  
 Response: 1238382  
 Conc: 26.33 ng/ml



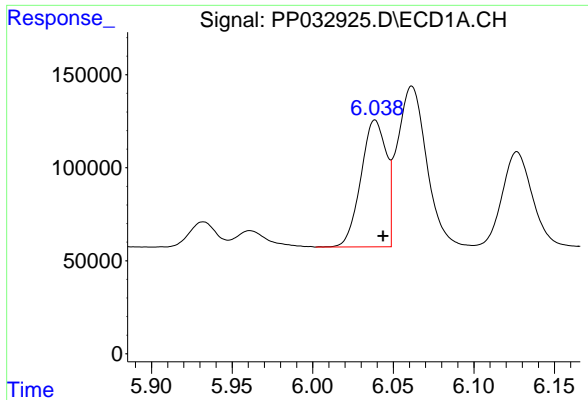
#2 Decachlorobiphenyl

R.T.: 10.571 min  
 Delta R.T.: -0.006 min  
 Response: 956537  
 Conc: 24.24 ng/ml



#2 Decachlorobiphenyl

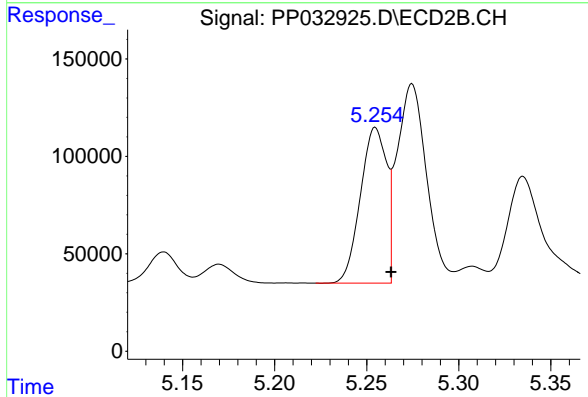
R.T.: 9.284 min  
 Delta R.T.: -0.012 min  
 Response: 850761  
 Conc: 22.71 ng/ml



#3 AR-1016-1

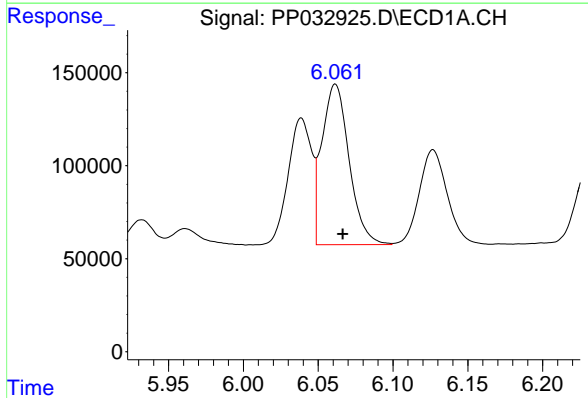
R.T.: 6.039 min  
 Delta R.T.: -0.005 min  
 Response: 747505  
 Conc: 460.12 ng/ml

Instrument :  
 ECD\_P  
 ClientSampleId :  
 IDW-BR2-SO-012121MS



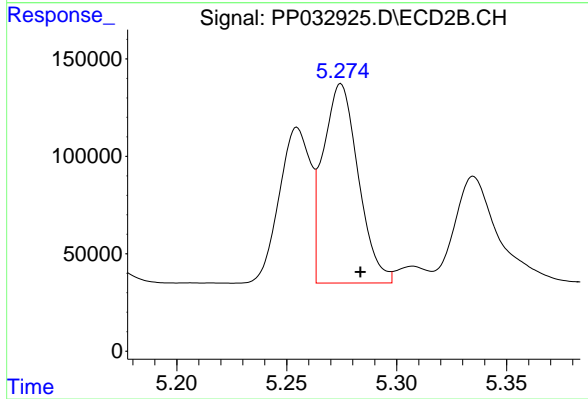
#3 AR-1016-1

R.T.: 5.255 min  
 Delta R.T.: -0.009 min  
 Response: 790340  
 Conc: 581.85 ng/ml



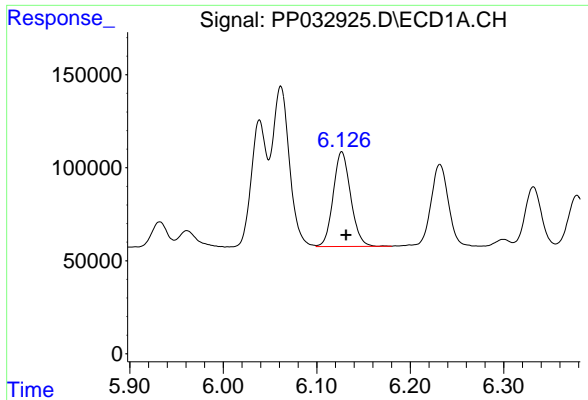
#4 AR-1016-2

R.T.: 6.062 min  
 Delta R.T.: -0.005 min  
 Response: 1093378  
 Conc: 442.48 ng/ml



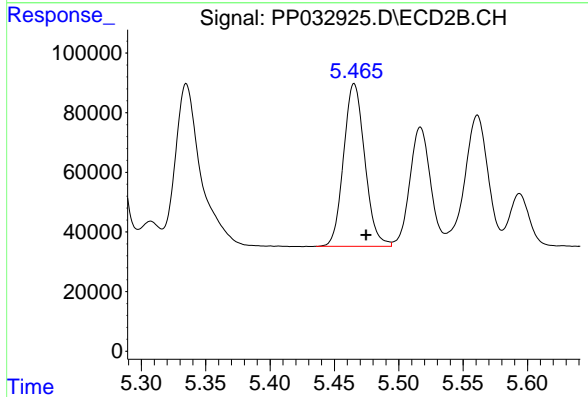
#4 AR-1016-2

R.T.: 5.275 min  
 Delta R.T.: -0.009 min  
 Response: 1136206  
 Conc: 560.18 ng/ml

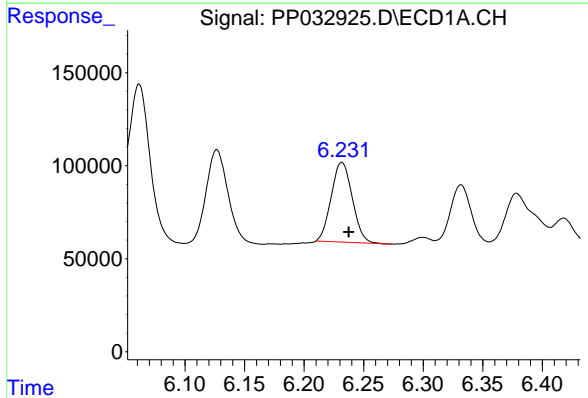


#5 AR-1016-3  
 R.T.: 6.127 min  
 Delta R.T.: -0.005 min  
 Response: 660713  
 Conc: 444.76 ng/ml

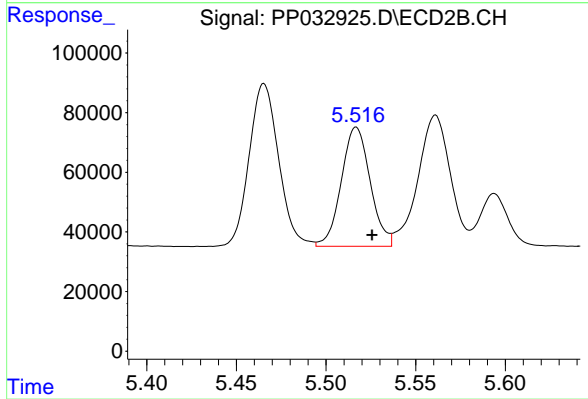
**Instrument :**  
 ECD\_P  
**ClientSampleId :**  
 IDW-BR2-SO-012121MS



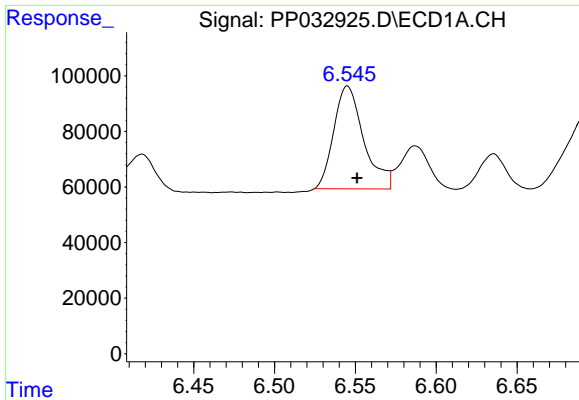
#5 AR-1016-3  
 R.T.: 5.465 min  
 Delta R.T.: -0.009 min  
 Response: 625113  
 Conc: 572.12 ng/ml



#6 AR-1016-4  
 R.T.: 6.232 min  
 Delta R.T.: -0.006 min  
 Response: 529003  
 Conc: 425.02 ng/ml



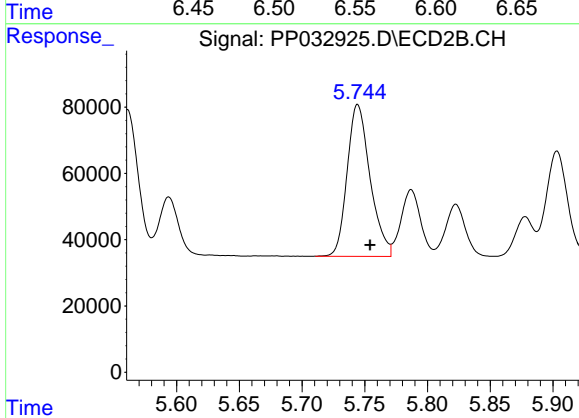
#6 AR-1016-4  
 R.T.: 5.517 min  
 Delta R.T.: -0.009 min  
 Response: 448582  
 Conc: 554.13 ng/ml



#7 AR-1016-5

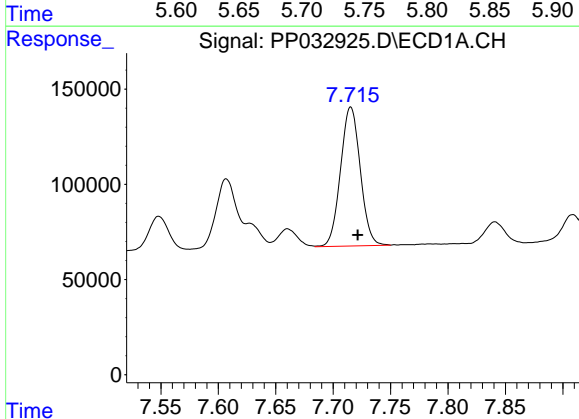
R.T.: 6.545 min  
 Delta R.T.: -0.006 min  
 Response: 477094  
 Conc: 420.40 ng/ml

Instrument :  
 ECD\_P  
 ClientSampleId :  
 IDW-BR2-SO-012121MS



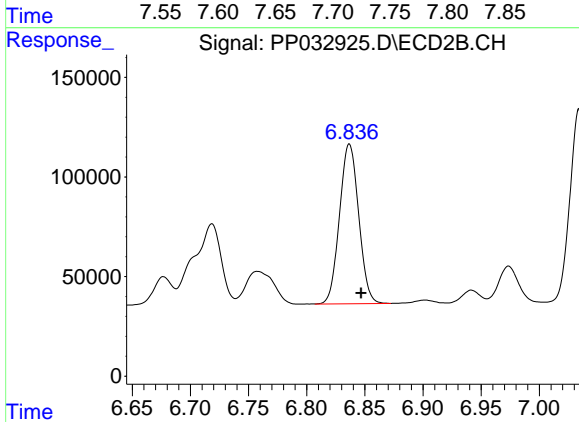
#7 AR-1016-5

R.T.: 5.744 min  
 Delta R.T.: -0.010 min  
 Response: 582868  
 Conc: 540.97 ng/ml



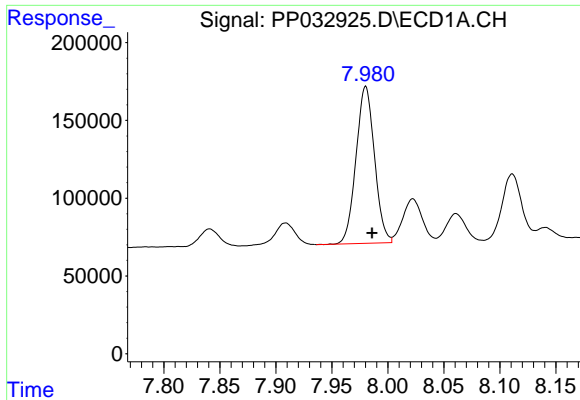
#31 AR-1260-1

R.T.: 7.715 min  
 Delta R.T.: -0.006 min  
 Response: 874912  
 Conc: 458.94 ng/ml



#31 AR-1260-1

R.T.: 6.837 min  
 Delta R.T.: -0.010 min  
 Response: 922944  
 Conc: 483.82 ng/ml

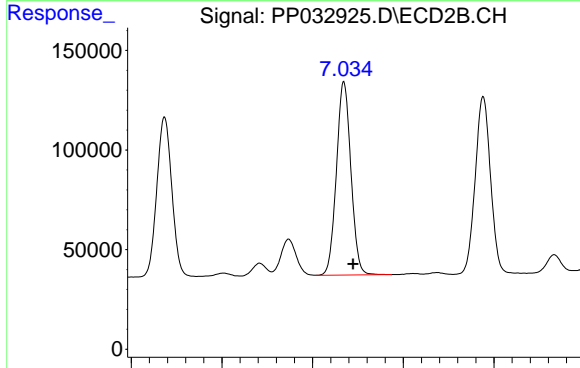


#32 AR-1260-2

R.T.: 7.980 min  
 Delta R.T.: -0.006 min  
 Response: 1159542  
 Conc: 480.11 ng/ml

**Instrument :**  
 ECD\_P  
**ClientSampleId :**  
 IDW-BR2-SO-012121MS

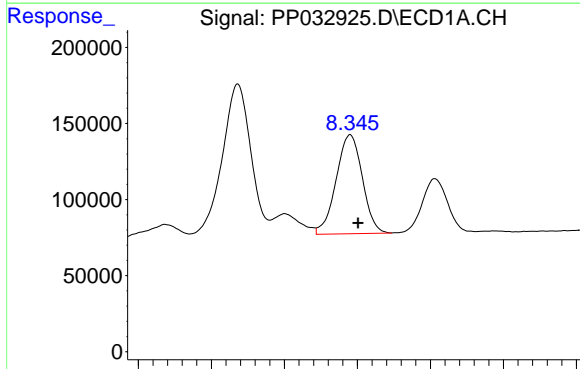
Time 7.80 7.85 7.90 7.95 8.00 8.05 8.10 8.15



#32 AR-1260-2

R.T.: 7.034 min  
 Delta R.T.: -0.010 min  
 Response: 1077770  
 Conc: 472.94 ng/ml

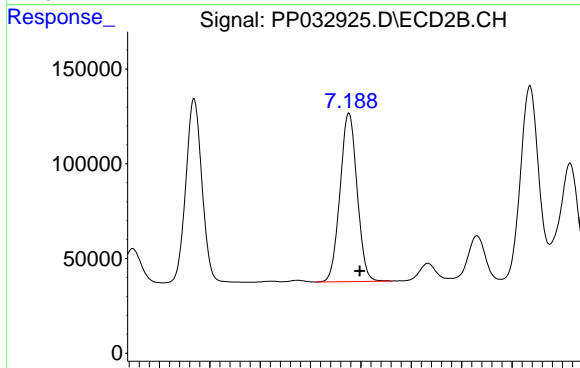
Time 6.80 6.90 7.00 7.10 7.20



#33 AR-1260-3

R.T.: 8.345 min  
 Delta R.T.: -0.005 min  
 Response: 811996  
 Conc: 402.85 ng/ml

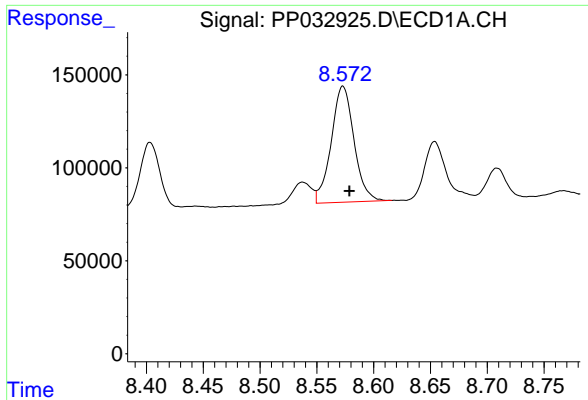
Time 8.20 8.25 8.30 8.35 8.40 8.45



#33 AR-1260-3

R.T.: 7.188 min  
 Delta R.T.: -0.011 min  
 Response: 1042869  
 Conc: 476.91 ng/ml

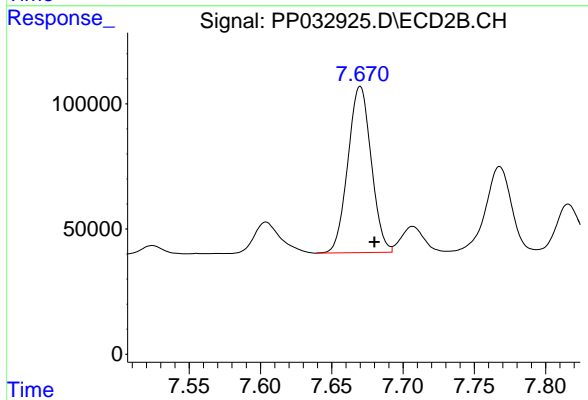
Time 7.00 7.05 7.10 7.15 7.20 7.25 7.30 7.35



#34 AR-1260-4

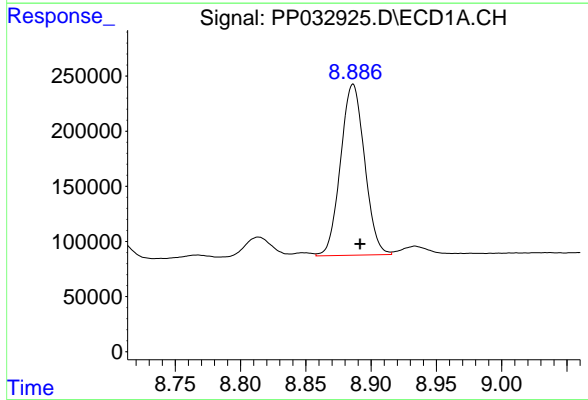
R.T.: 8.573 min  
 Delta R.T.: -0.006 min  
 Response: 872002  
 Conc: 423.21 ng/ml

Instrument :  
 ECD\_P  
 ClientSampleId :  
 IDW-BR2-SO-012121MS



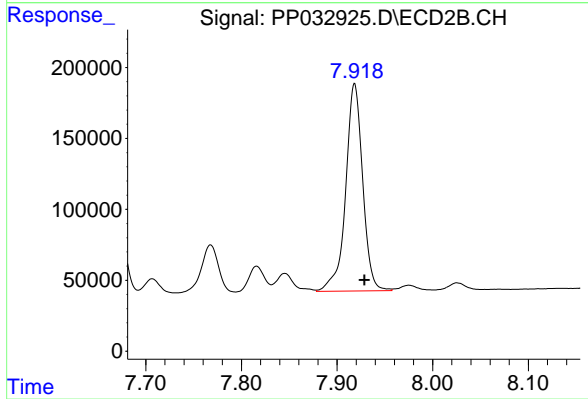
#34 AR-1260-4

R.T.: 7.670 min  
 Delta R.T.: -0.010 min  
 Response: 754949  
 Conc: 413.15 ng/ml



#35 AR-1260-5

R.T.: 8.886 min  
 Delta R.T.: -0.005 min  
 Response: 1985764  
 Conc: 438.37 ng/ml



#35 AR-1260-5

R.T.: 7.918 min  
 Delta R.T.: -0.010 min  
 Response: 1814763  
 Conc: 421.87 ng/ml