

Data Path : Z:\pestpcbsrv\HPCHEM1\ECD\_P\Data\PP012622\  
 Data File : PP043298.D  
 Signal(s) : Signal #1: ECD1A.CH Signal #2: ECD2B.CH  
 Acq On : 26 Jan 2022 15:42  
 Operator : AJ\MA  
 Sample : AR1254CCC500  
 Misc :  
 ALS Vial : 6 Sample Multiplier: 1

**Instrument :**  
 ECD\_P  
**ClientSampleId :**  
 AR1254CCC500

Integration File signal 1: autoint1.e  
 Integration File signal 2: autoint2.e  
 Quant Time: Jan 27 01:18:40 2022  
 Quant Method : Z:\pestpcbsrv\HPCHEM1\ECD\_P\methods\PP012422.M  
 Quant Title : GC EXTRACTABLES  
 QLast Update : Tue Jan 25 03:09:04 2022  
 Response via : Initial Calibration  
 Integrator: ChemStation 6890 Scale Mode: Small noise peaks clipped

Volume Inj. : 2 µl  
 Signal #1 Phase : ZB-MR1 Signal #2 Phase: ZB-MR2  
 Signal #1 Info : 30Mx0.32mmx 0.50µ Signal #2 Info : 30M x 0.32mm x 0.25µm

Compound	RT#1	RT#2	Resp#1	Resp#2	ng/ml	ng/ml
-----						
System Monitoring Compounds						
1) SA Tetrachlo...	4.866	4.033	1093798	1178417	47.586	52.886
2) SA Decachlor...	10.785	9.358	845806	989831	59.717	53.094
Target Compounds						
26) L6 AR-1254-1	7.074	6.171	355912	698216	497.310	492.393
27) L6 AR-1254-2	7.303	6.330	528337	613460	502.477	496.158
28) L6 AR-1254-3	7.680	6.754	556281	952777	517.225	495.782
29) L6 AR-1254-4	7.974	6.993	374885	563577	531.833	509.797
30) L6 AR-1254-5	8.402	7.424	462607	783412	572.725	507.145
-----						

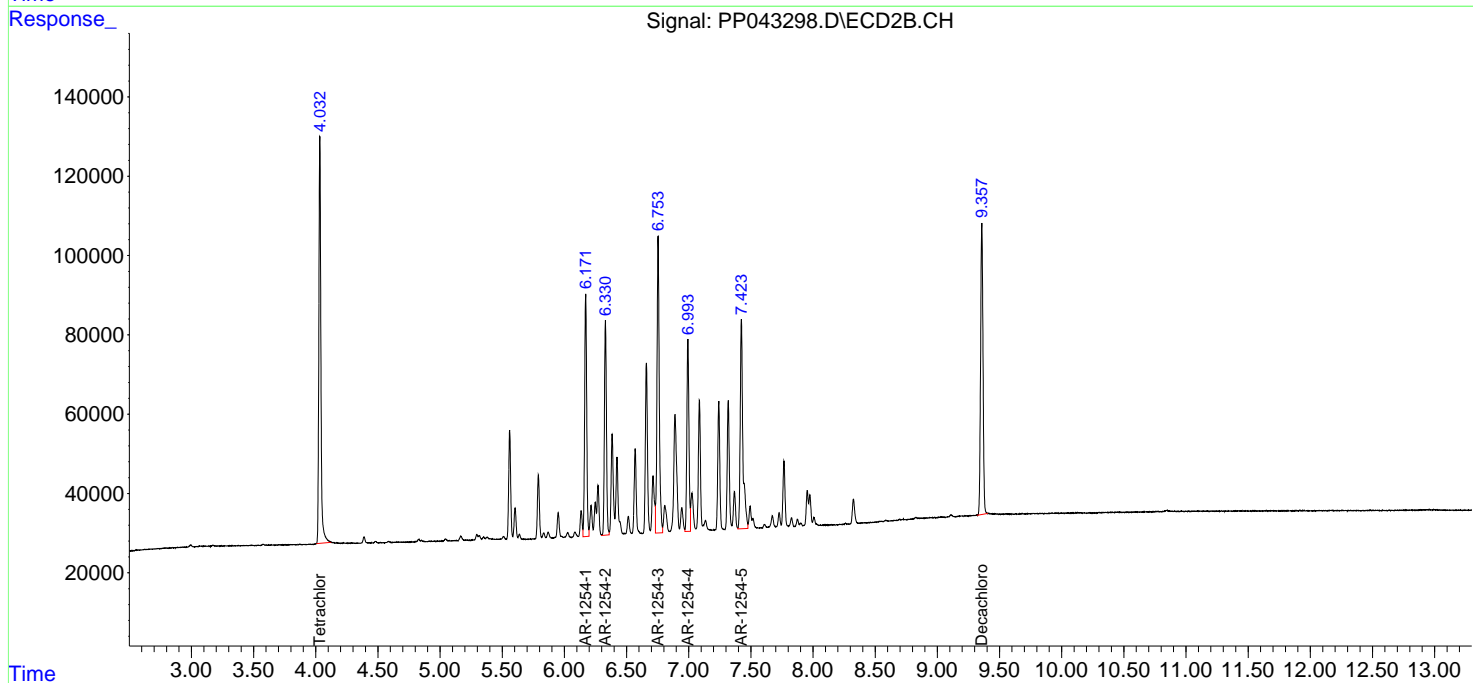
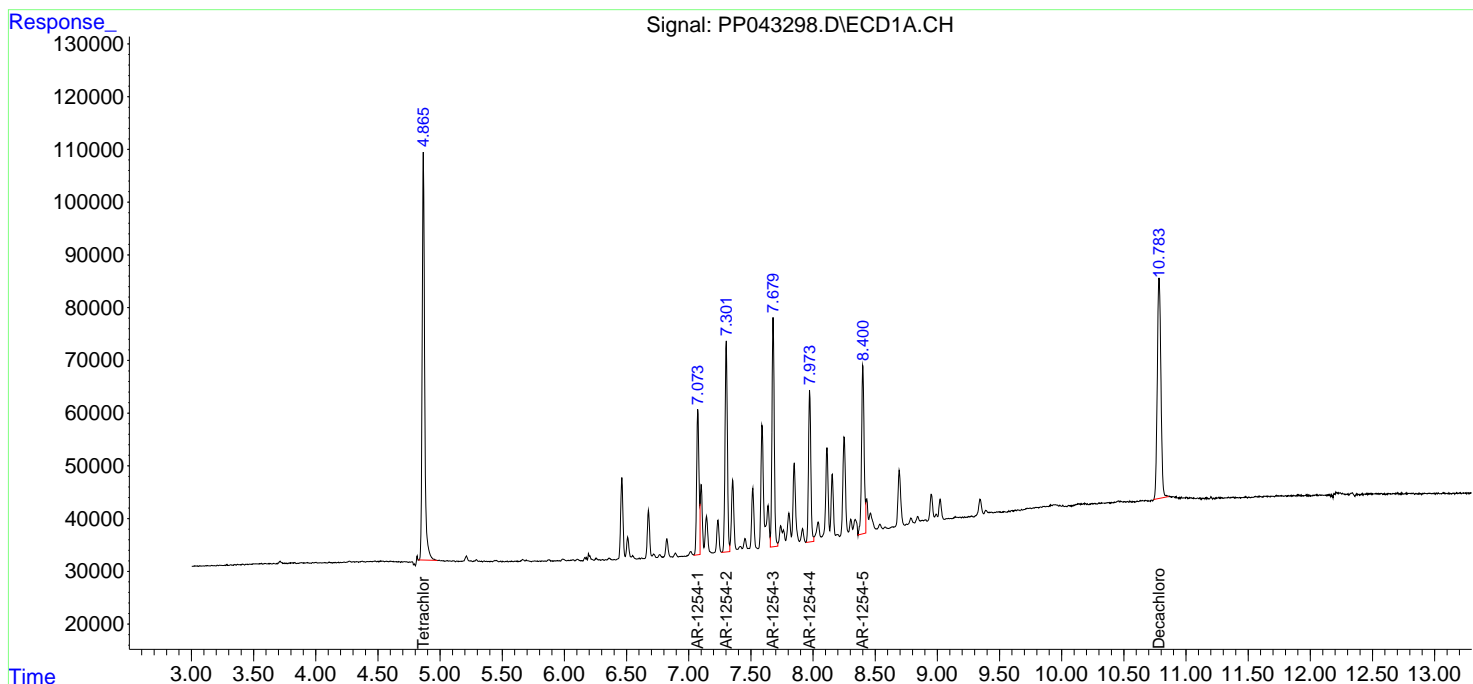
(f)=RT Delta > 1/2 Window (#)=Amounts differ by > 25% (m)=manual int.

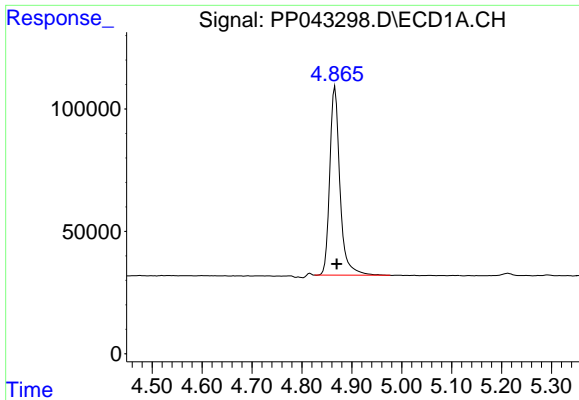
Data Path : Z:\pestpcbsrv\HPCHEM1\ECD\_P\Data\PP012622\  
 Data File : PP043298.D  
 Signal(s) : Signal #1: ECD1A.CH Signal #2: ECD2B.CH  
 Acq On : 26 Jan 2022 15:42  
 Operator : AJ\MA  
 Sample : AR1254CCC500  
 Misc :  
 ALS Vial : 6 Sample Multiplier: 1

Instrument :  
 ECD\_P  
 ClientSampleId :  
 AR1254CCC500

Integration File signal 1: autoint1.e  
 Integration File signal 2: autoint2.e  
 Quant Time: Jan 27 01:18:40 2022  
 Quant Method : Z:\pestpcbsrv\HPCHEM1\ECD\_P\methods\PP012422.M  
 Quant Title : GC EXTRACTABLES  
 QLast Update : Tue Jan 25 03:09:04 2022  
 Response via : Initial Calibration  
 Integrator: ChemStation 6890 Scale Mode: Small noise peaks clipped

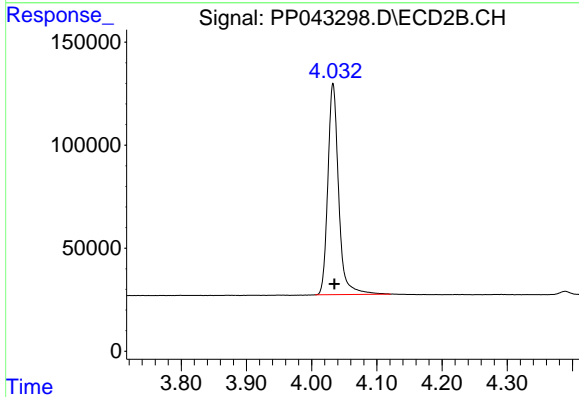
Volume Inj. : 2 µl  
 Signal #1 Phase : ZB-MR1 Signal #2 Phase: ZB-MR2  
 Signal #1 Info : 30Mx0.32mmx 0.50µ Signal #2 Info : 30M x 0.32mm x 0.25µm



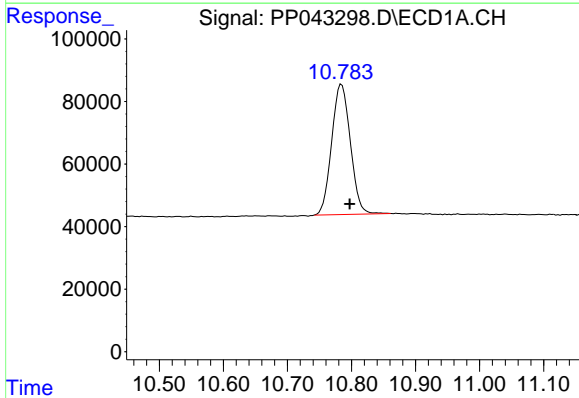


#1 Tetrachloro-m-xylene  
 R.T.: 4.866 min  
 Delta R.T.: -0.004 min  
 Response: 1093798  
 Conc: 47.59 ng/ml

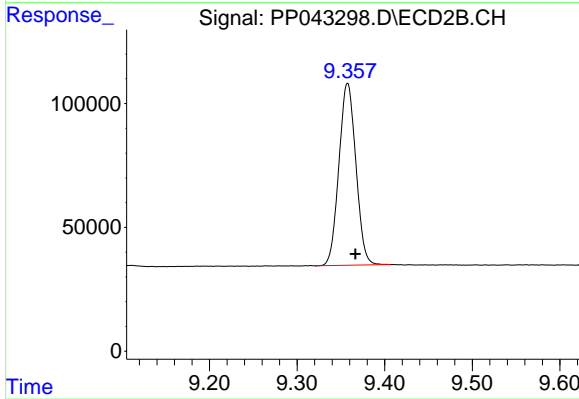
Instrument :  
 ECD\_P  
 ClientSampleId :  
 AR1254CCC500



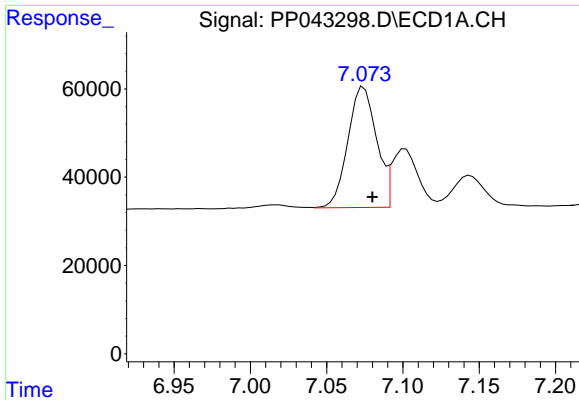
#1 Tetrachloro-m-xylene  
 R.T.: 4.033 min  
 Delta R.T.: -0.002 min  
 Response: 1178417  
 Conc: 52.89 ng/ml



#2 Decachlorobiphenyl  
 R.T.: 10.785 min  
 Delta R.T.: -0.013 min  
 Response: 845806  
 Conc: 59.72 ng/ml



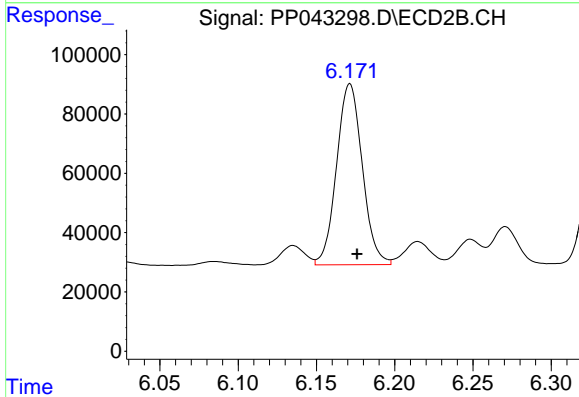
#2 Decachlorobiphenyl  
 R.T.: 9.358 min  
 Delta R.T.: -0.009 min  
 Response: 989831  
 Conc: 53.09 ng/ml



#26 AR-1254-1

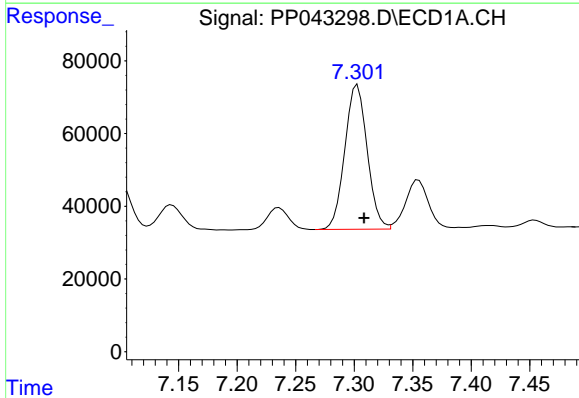
R.T.: 7.074 min  
 Delta R.T.: -0.005 min  
 Response: 355912  
 Conc: 497.31 ng/ml

Instrument :  
 ECD\_P  
 ClientSampleId :  
 AR1254CCC500



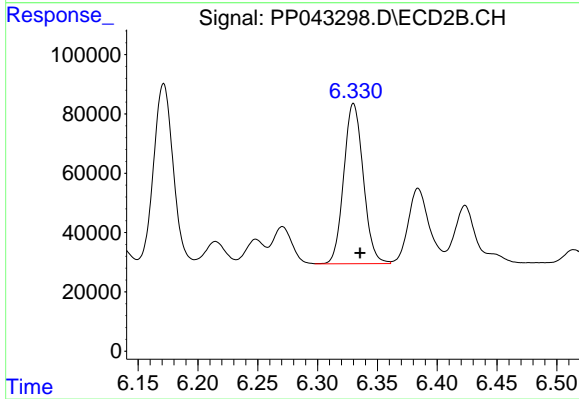
#26 AR-1254-1

R.T.: 6.171 min  
 Delta R.T.: -0.005 min  
 Response: 698216  
 Conc: 492.39 ng/ml



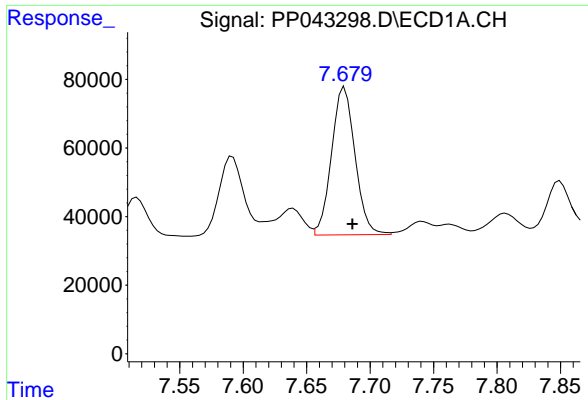
#27 AR-1254-2

R.T.: 7.303 min  
 Delta R.T.: -0.006 min  
 Response: 528337  
 Conc: 502.48 ng/ml



#27 AR-1254-2

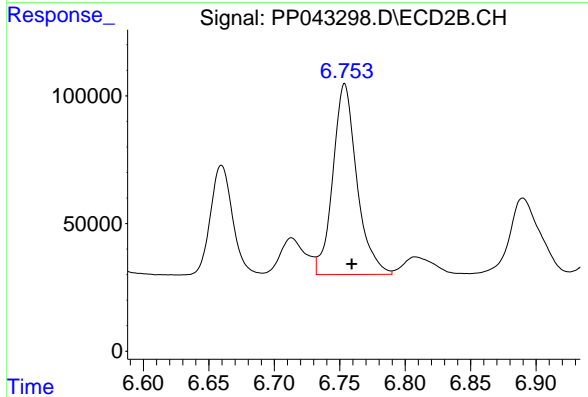
R.T.: 6.330 min  
 Delta R.T.: -0.005 min  
 Response: 613460  
 Conc: 496.16 ng/ml



#28 AR-1254-3

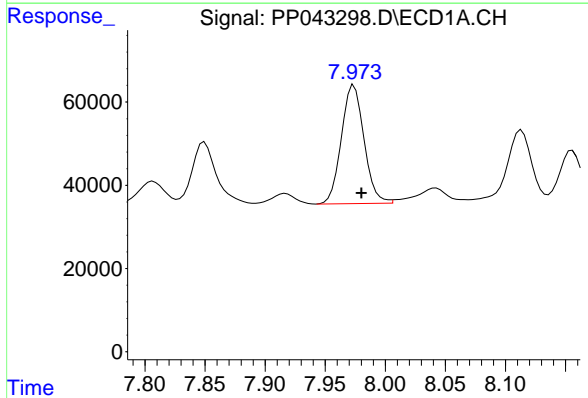
R.T.: 7.680 min  
 Delta R.T.: -0.006 min  
 Response: 556281  
 Conc: 517.22 ng/ml

Instrument :  
 ECD\_P  
 ClientSampleId :  
 AR1254CCC500



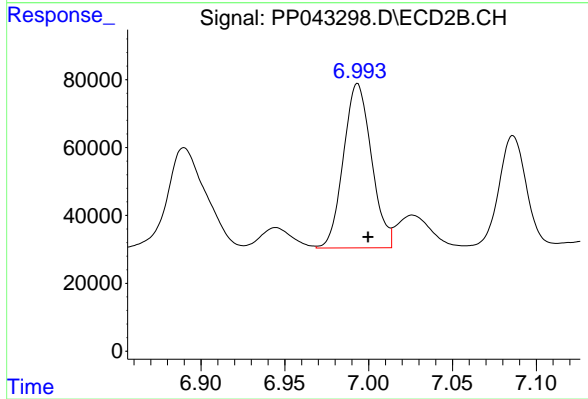
#28 AR-1254-3

R.T.: 6.754 min  
 Delta R.T.: -0.005 min  
 Response: 952777  
 Conc: 495.78 ng/ml



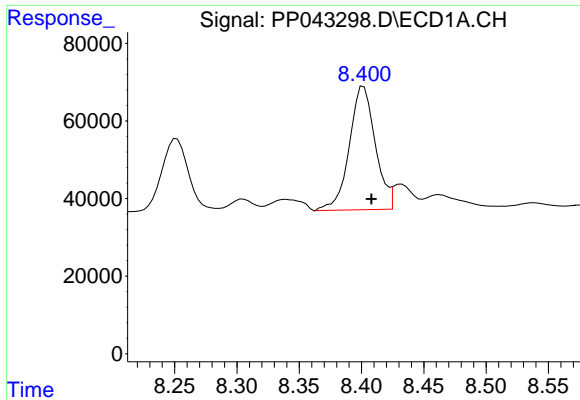
#29 AR-1254-4

R.T.: 7.974 min  
 Delta R.T.: -0.006 min  
 Response: 374885  
 Conc: 531.83 ng/ml



#29 AR-1254-4

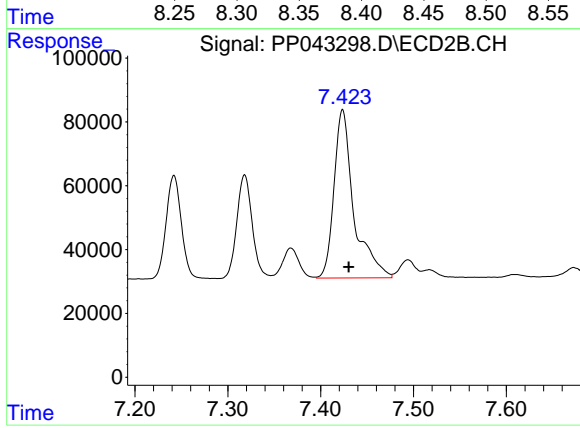
R.T.: 6.993 min  
 Delta R.T.: -0.006 min  
 Response: 563577  
 Conc: 509.80 ng/ml



#30 AR-1254-5

R.T.: 8.402 min  
Delta R.T.: -0.006 min  
Response: 462607  
Conc: 572.73 ng/ml

Instrument :  
ECD\_P  
ClientSampleId :  
AR1254CCC500



#30 AR-1254-5

R.T.: 7.424 min  
Delta R.T.: -0.006 min  
Response: 783412  
Conc: 507.14 ng/ml