

Data Path : Z:\pestpcbsrv\HPCHEM1\ECD\_P\Data\PP012623\  
 Data File : PP054911.D  
 Signal(s) : Signal #1: ECD1A.ch Signal #2: ECD2B.ch  
 Acq On : 25 Jan 2023 08:28  
 Operator : YP\AJ  
 Sample : HEXANE  
 Misc :  
 ALS Vial : 1 Sample Multiplier: 1

Instrument :  
 ECD\_P  
 ClientSampleId :

Integration File signal 1: autoint1.e  
 Integration File signal 2: autoint2.e  
 Quant Time: Jan 25 14:27:56 2023  
 Quant Method : Z:\pestpcbsrv\HPCHEM1\ECD\_P\methods\PP012423.M  
 Quant Title : GC EXTRACTABLES  
 QLast Update : Tue Jan 24 03:37:45 2023  
 Response via : Initial Calibration  
 Integrator: ChemStation

Volume Inj. : 2 µl  
 Signal #1 Phase : ZB-MR2 Signal #2 Phase: ZB-MR2  
 Signal #1 Info : 30Mx0.32mmx 0.50µ Signal #2 Info : 30M x 0.32mm x 0.25µm

Compound	RT#1	RT#2	Resp#1	Resp#2	ng/ml	ng/ml
System Monitoring Compounds						
1) SA Tetrachlo...	4.338	0.000	34256	0	0.020	N.D. #
Target Compounds						
3) L1 AR-1016-1	5.507	4.665	26155	28129	0.389	0.568 #
4) L1 AR-1016-2	5.542f	4.676	108028	23808	1.127	0.344 #
5) L1 AR-1016-3	5.611f	0.000	68272	0	1.141	N.D. #
6) L1 AR-1016-4	5.695	0.000	41430	0	0.865	N.D. #
7) L1 AR-1016-5	5.994	0.000	360464	0	7.113	N.D. #
8) L2 AR-1221-1	4.534	3.788	28413	31561	1.208	1.592 #
9) L2 AR-1221-2	4.610f	0.000	29171	0	1.642	N.D. #
10) L2 AR-1221-3	4.697	0.000	45567	0	0.847	N.D. #
11) L3 AR-1232-1	4.697	0.000	45567	0	1.027	N.D. #
12) L3 AR-1232-2	5.235	4.676	92326	23808	4.083	0.745 #
13) L3 AR-1232-3	5.542f	0.000	108028	0	2.460	N.D. #
14) L3 AR-1232-4	5.695	0.000	41430	0	1.872	N.D. #
15) L3 AR-1232-5	5.776	0.000	31213	0	1.783	N.D. #
16) L4 AR-1242-1	5.507	4.665	26155	28129	0.467	0.687 #
17) L4 AR-1242-2	5.542f	4.676	108028	23808	1.353	0.417 #
18) L4 AR-1242-3	5.566f	0.000	42894	0	0.864	N.D. #
19) L4 AR-1242-4	5.695	0.000	41430	0	1.034	N.D. #
20) L4 AR-1242-5	6.424	5.456	1290663	1851286	29.027	49.537 #
21) L5 AR-1248-1	5.507	4.665	26155	28129	0.627	0.907 #
22) L5 AR-1248-2	5.776	0.000	31213	0	0.491	N.D. #
23) L5 AR-1248-3	5.994	0.000	360464	0	5.212	N.D. #
24) L5 AR-1248-4	6.378	0.000	9465302	0	124.816	N.D. #
25) L5 AR-1248-5	6.424	5.515	1290663	10970788	17.490	223.116 #
26) L6 AR-1254-1	6.378f	5.456	9465302	1851286	119.977	22.924 #
27) L6 AR-1254-2	6.579	0.000	991235	0	8.190	N.D. #
28) L6 AR-1254-3	6.964f	6.025	8277386	6400901	67.576	57.455
29) L6 AR-1254-4	7.235	6.225f	3786571	8074559	42.975	131.278 #
30) L6 AR-1254-5	7.638f	0.000	2423786	0	23.960	N.D. #
31) L7 AR-1260-1	7.115	0.000	414326	0	4.346	N.D. #
32) L7 AR-1260-2	7.357f	6.348	1056843	1624823	9.390	18.074 #
33) L7 AR-1260-3	7.734	0.000	2050202	0	25.462	N.D. #
34) L7 AR-1260-4	7.936f	6.989f	400049	269635	4.121	3.766
35) L7 AR-1260-5	8.305f	7.213	938056	289265	5.274	1.882 #
36) L8 AR-1262-1	7.734	6.774	2050202	144527	17.377	3.364 #
37) L8 AR-1262-2	8.305f	6.989f	938056	269635	4.657	2.911 #
38) L8 AR-1262-3	8.587	7.471f	31027	92182	0.223	1.265 #
39) L8 AR-1262-4	8.692	7.530f	667856	626696	8.687	4.792 #
41) L9 AR-1268-1	8.587	7.471f	31027	92182	0.127	0.426 #
42) L9 AR-1268-2	8.692	7.530f	667856	626696	2.940	3.212
43) L9 AR-1268-3	8.907	0.000	78752	0	0.394	N.D. #

Data Path : Z:\pestpcbsrv\HPCHEM1\ECD\_P\Data\PP012623\  
 Data File : PP054911.D  
 Signal(s) : Signal #1: ECD1A.ch Signal #2: ECD2B.ch  
 Acq On : 25 Jan 2023 08:28  
 Operator : YP\AJ  
 Sample : HEXANE  
 Misc :  
 ALS Vial : 1 Sample Multiplier: 1

Instrument :  
 ECD\_P  
 ClientSampleId :

Integration File signal 1: autoint1.e  
 Integration File signal 2: autoint2.e  
 Quant Time: Jan 25 14:27:56 2023  
 Quant Method : Z:\pestpcbsrv\HPCHEM1\ECD\_P\methods\PP012423.M  
 Quant Title : GC EXTRACTABLES  
 QLast Update : Tue Jan 24 03:37:45 2023  
 Response via : Initial Calibration  
 Integrator: ChemStation

Volume Inj. : 2 µl  
 Signal #1 Phase : ZB-MR1 Signal #2 Phase: ZB-MR2  
 Signal #1 Info : 30Mx0.32mmx 0.50µ Signal #2 Info : 30M x 0.32mm x 0.25µm

	Compound	RT#1	RT#2	Resp#1	Resp#2	ng/ml	ng/ml
45)	L9 AR-1268-5	0.000	8.351	0	169585	N.D.	0.322 #

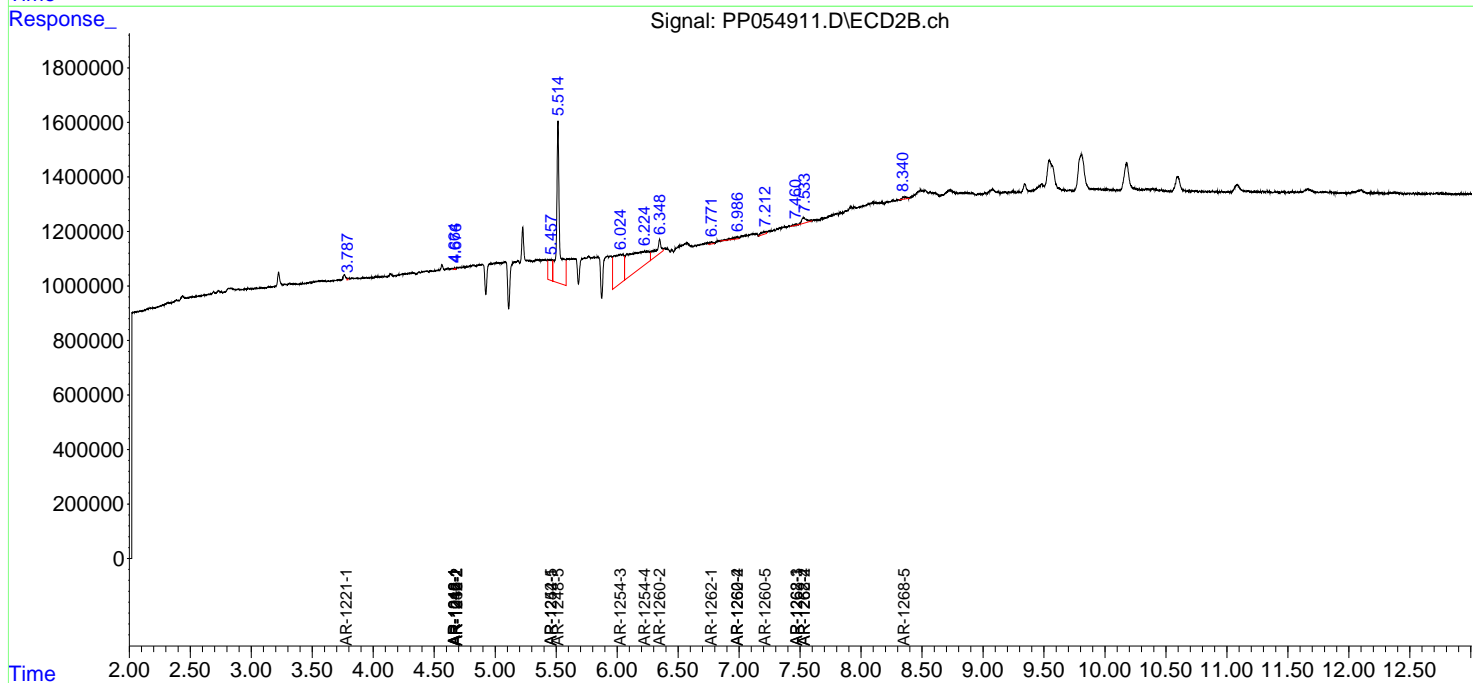
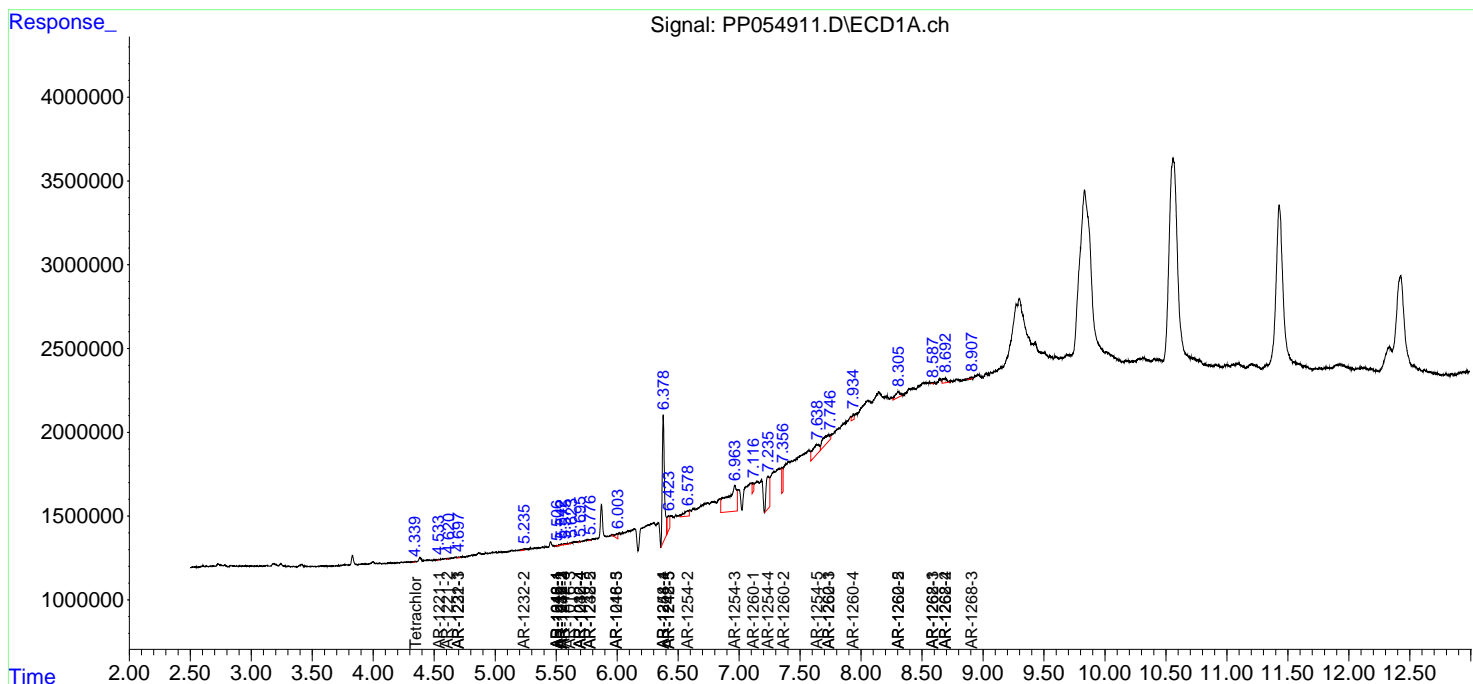
(f)=RT Delta > 1/2 Window (#)=Amounts differ by > 25% (m)=manual int.

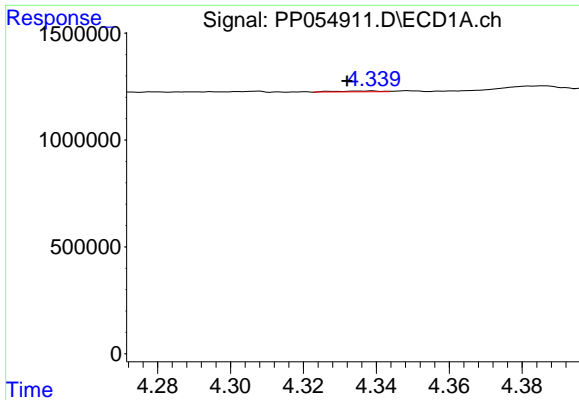
Data Path : Z:\pestpcbsrv\HPCHEM1\ECD\_P\Data\PP012623\  
 Data File : PP054911.D  
 Signal(s) : Signal #1: ECD1A.ch Signal #2: ECD2B.ch  
 Acq On : 25 Jan 2023 08:28  
 Operator : YP\AJ  
 Sample : HEXANE  
 Misc :  
 ALS Vial : 1 Sample Multiplier: 1

Instrument :  
 ECD\_P  
 ClientSampleId :

Integration File signal 1: autoint1.e  
 Integration File signal 2: autoint2.e  
 Quant Time: Jan 25 14:27:56 2023  
 Quant Method : Z:\pestpcbsrv\HPCHEM1\ECD\_P\methods\PP012423.M  
 Quant Title : GC EXTRACTABLES  
 QLast Update : Tue Jan 24 03:37:45 2023  
 Response via : Initial Calibration  
 Integrator: ChemStation

Volume Inj. : 2 µl  
 Signal #1 Phase : ZB-MR1 Signal #2 Phase: ZB-MR2  
 Signal #1 Info : 30Mx0.32mmx 0.50µ Signal #2 Info : 30M x 0.32mm x 0.25µm

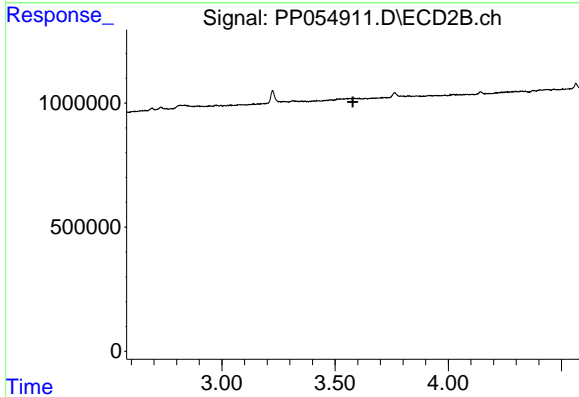




#1 Tetrachloro-m-xylene

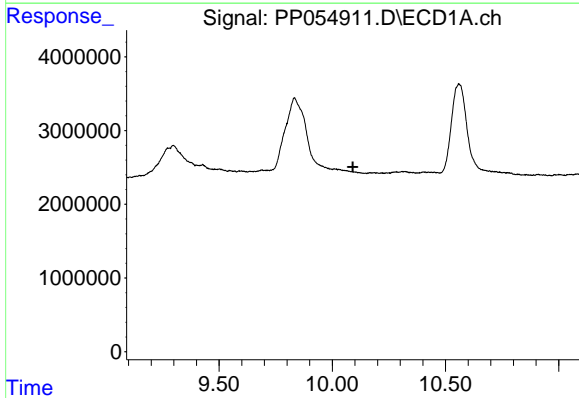
R.T.: 4.338 min  
 Delta R.T.: 0.006 min  
 Response: 34256  
 Conc: 0.02 ng/ml

Instrument :  
 ECD\_P  
 ClientSampleId :



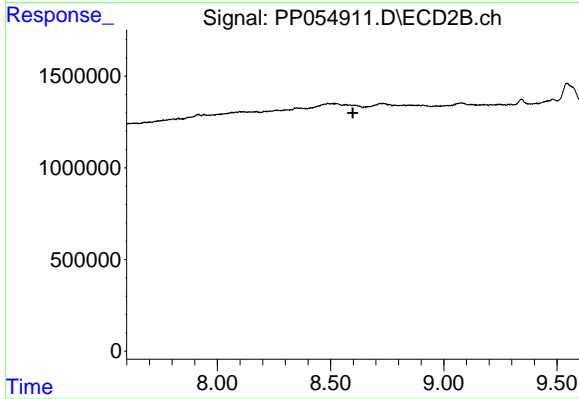
#1 Tetrachloro-m-xylene

R.T.: 0.000 min  
 Exp R.T. : 3.578 min  
 Response: 0  
 Conc: N.D.



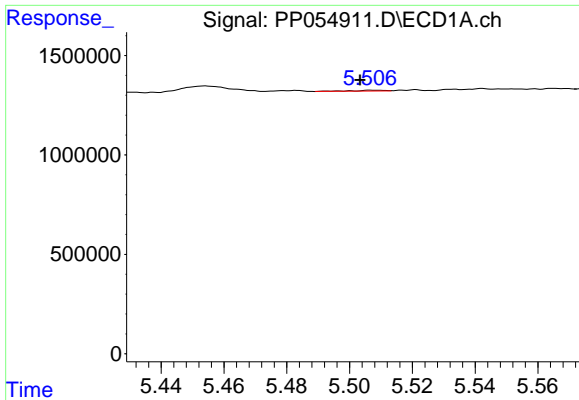
#2 Decachlorobiphenyl

R.T.: 0.000 min  
 Exp R.T. : 10.091 min  
 Response: 0  
 Conc: N.D.



#2 Decachlorobiphenyl

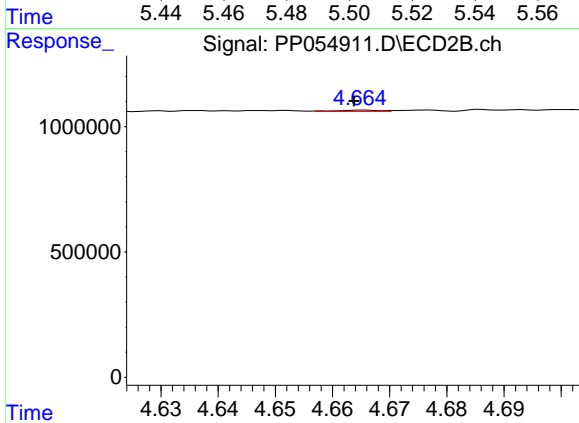
R.T.: 0.000 min  
 Exp R.T. : 8.598 min  
 Response: 0  
 Conc: N.D.



#3 AR-1016-1

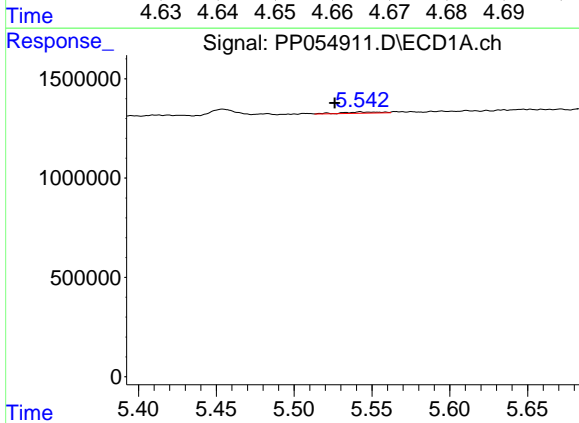
R.T.: 5.507 min  
 Delta R.T.: 0.004 min  
 Response: 26155  
 Conc: 0.39 ng/ml

Instrument :  
 ECD\_P  
 ClientSampleId :



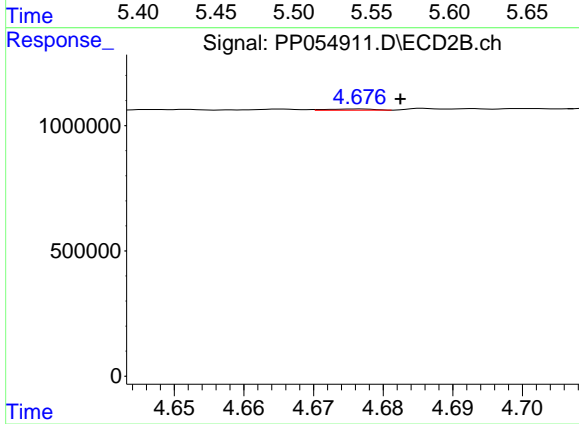
#3 AR-1016-1

R.T.: 4.665 min  
 Delta R.T.: 0.001 min  
 Response: 28129  
 Conc: 0.57 ng/ml



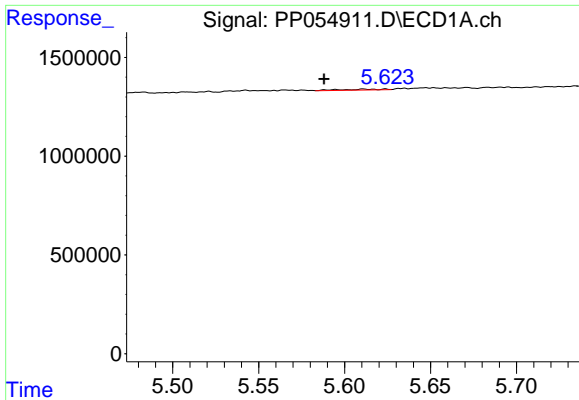
#4 AR-1016-2

R.T.: 5.542 min  
 Delta R.T.: 0.016 min  
 Response: 108028  
 Conc: 1.13 ng/ml



#4 AR-1016-2

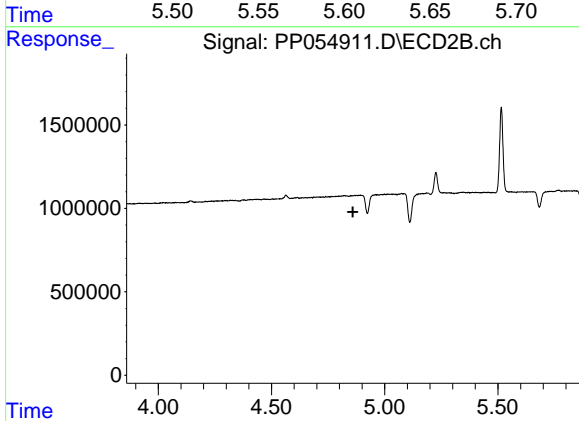
R.T.: 4.676 min  
 Delta R.T.: -0.006 min  
 Response: 23808  
 Conc: 0.34 ng/ml



#5 AR-1016-3

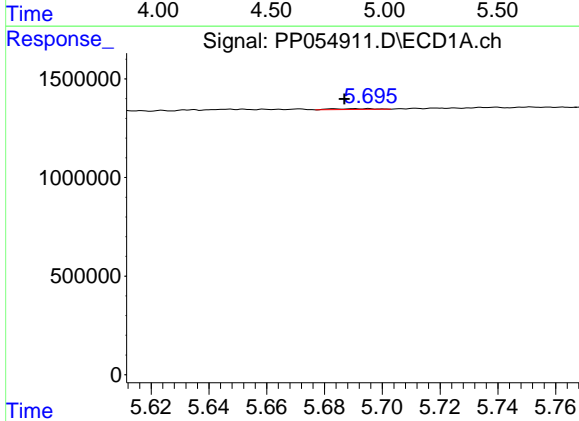
R.T.: 5.611 min  
 Delta R.T.: 0.023 min  
 Response: 68272  
 Conc: 1.14 ng/ml

Instrument :  
 ECD\_P  
 ClientSampleId :



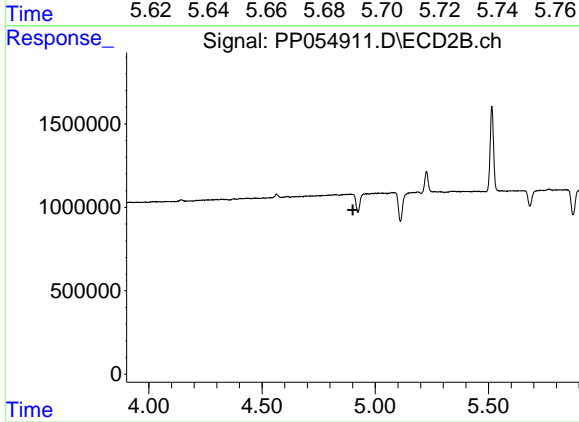
#5 AR-1016-3

R.T.: 0.000 min  
 Exp R.T. : 4.859 min  
 Response: 0  
 Conc: N.D.



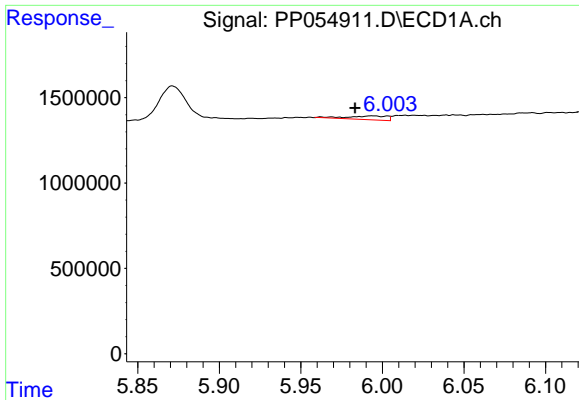
#6 AR-1016-4

R.T.: 5.695 min  
 Delta R.T.: 0.008 min  
 Response: 41430  
 Conc: 0.86 ng/ml



#6 AR-1016-4

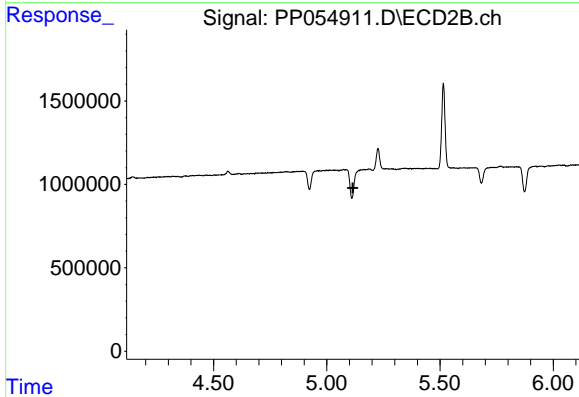
R.T.: 0.000 min  
 Exp R.T. : 4.901 min  
 Response: 0  
 Conc: N.D.



#7 AR-1016-5

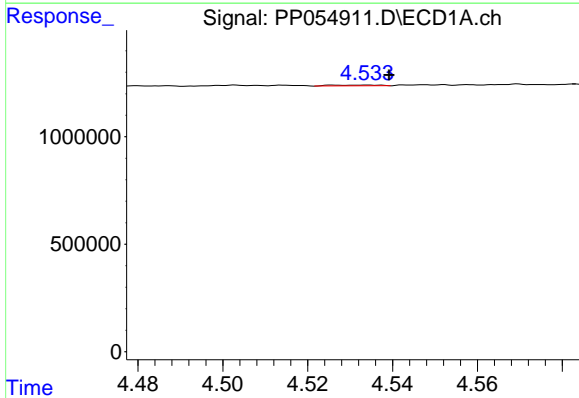
R.T.: 5.994 min  
 Delta R.T.: 0.011 min  
 Response: 360464  
 Conc: 7.11 ng/ml

Instrument :  
 ECD\_P  
 ClientSampleId :



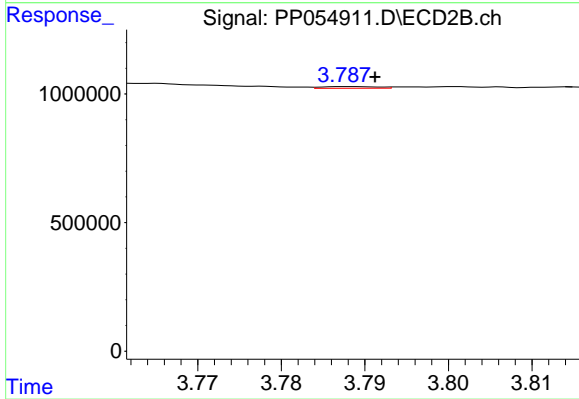
#7 AR-1016-5

R.T.: 0.000 min  
 Exp R.T. : 5.115 min  
 Response: 0  
 Conc: N.D.



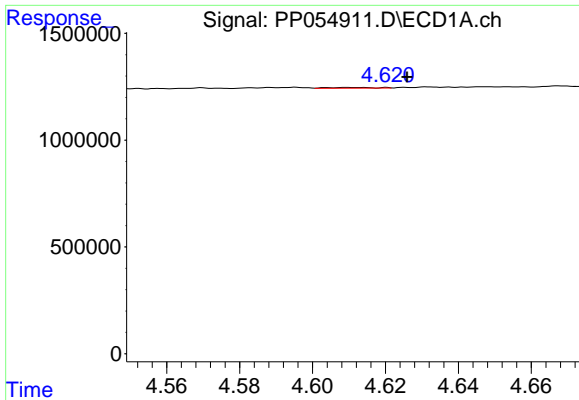
#8 AR-1221-1

R.T.: 4.534 min  
 Delta R.T.: -0.005 min  
 Response: 28413  
 Conc: 1.21 ng/ml



#8 AR-1221-1

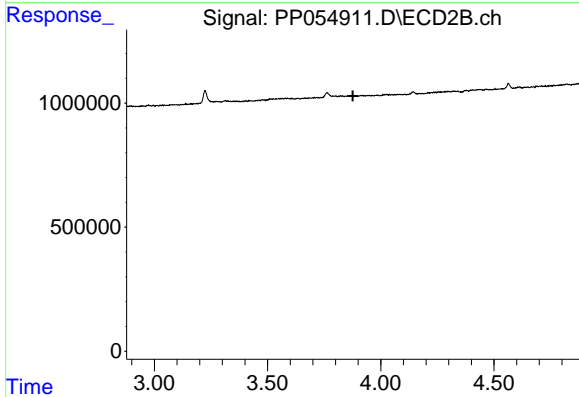
R.T.: 3.788 min  
 Delta R.T.: -0.003 min  
 Response: 31561  
 Conc: 1.59 ng/ml



#9 AR-1221-2

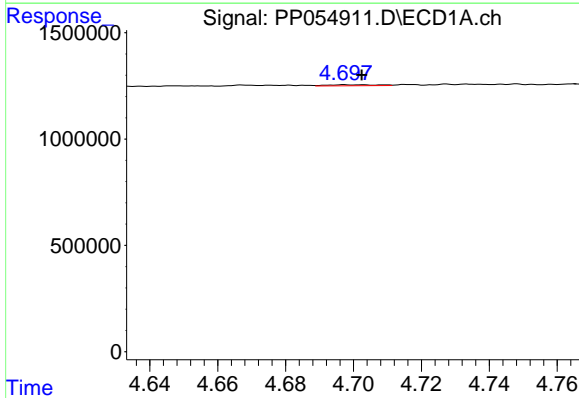
R.T.: 4.610 min  
 Delta R.T.: -0.016 min  
 Response: 29171  
 Conc: 1.64 ng/ml

Instrument :  
 ECD\_P  
 ClientSampleId :



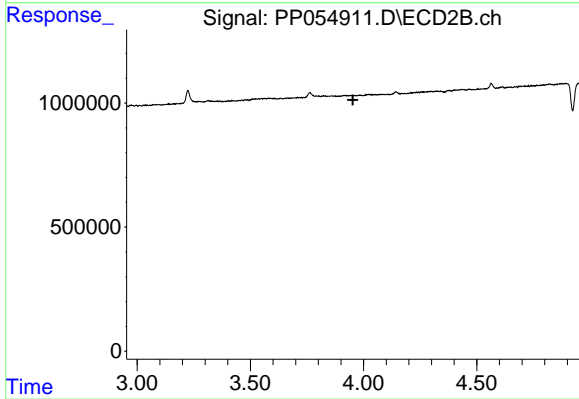
#9 AR-1221-2

R.T.: 0.000 min  
 Exp R.T. : 3.877 min  
 Response: 0  
 Conc: N.D.



#10 AR-1221-3

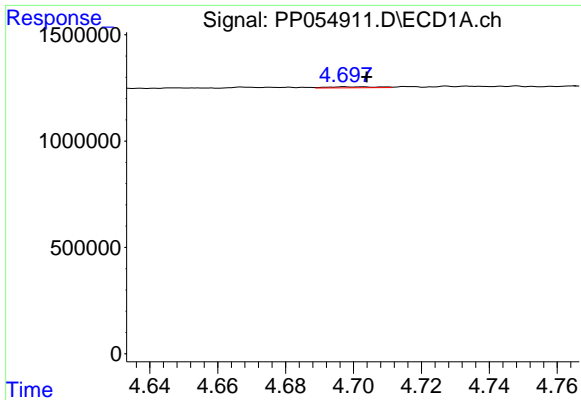
R.T.: 4.697 min  
 Delta R.T.: -0.005 min  
 Response: 45567  
 Conc: 0.85 ng/ml



#10 AR-1221-3

R.T.: 0.000 min  
 Exp R.T. : 3.952 min  
 Response: 0  
 Conc: N.D.

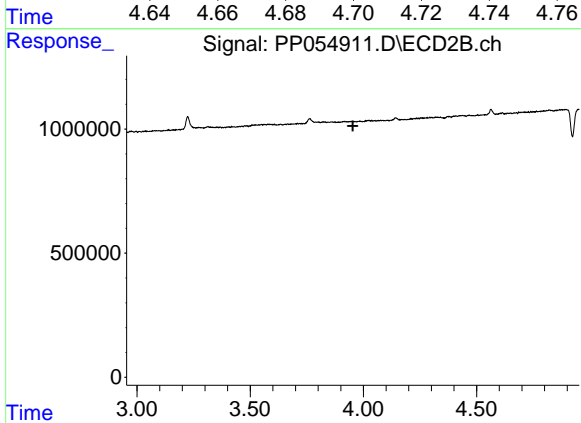




#11 AR-1232-1

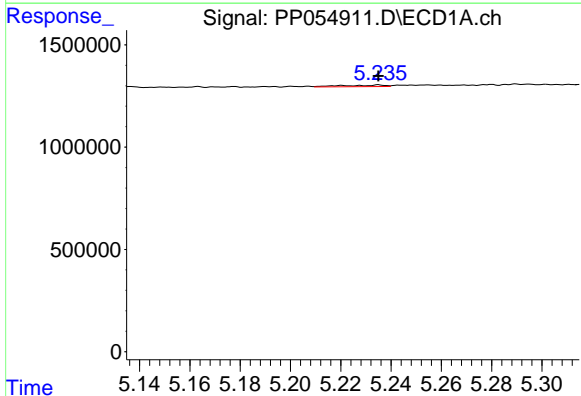
R.T.: 4.697 min  
 Delta R.T.: -0.006 min  
 Response: 45567  
 Conc: 1.03 ng/ml

Instrument :  
 ECD\_P  
 ClientSampleId :



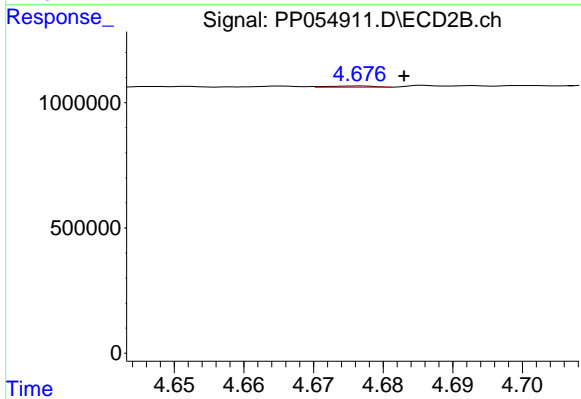
#11 AR-1232-1

R.T.: 0.000 min  
 Exp R.T. : 3.953 min  
 Response: 0  
 Conc: N.D.



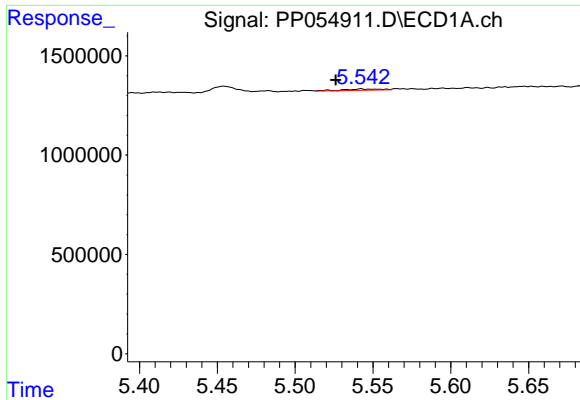
#12 AR-1232-2

R.T.: 5.235 min  
 Delta R.T.: 0.000 min  
 Response: 92326  
 Conc: 4.08 ng/ml



#12 AR-1232-2

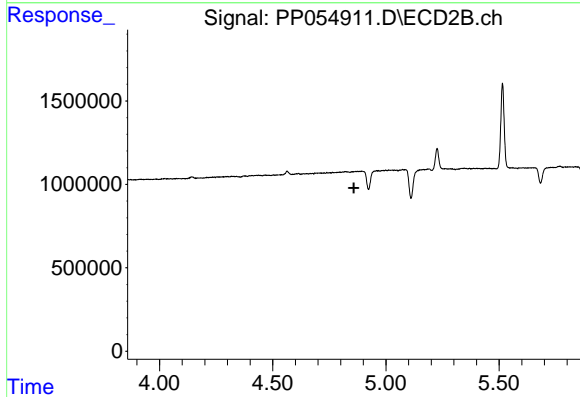
R.T.: 4.676 min  
 Delta R.T.: -0.007 min  
 Response: 23808  
 Conc: 0.75 ng/ml



#13 AR-1232-3

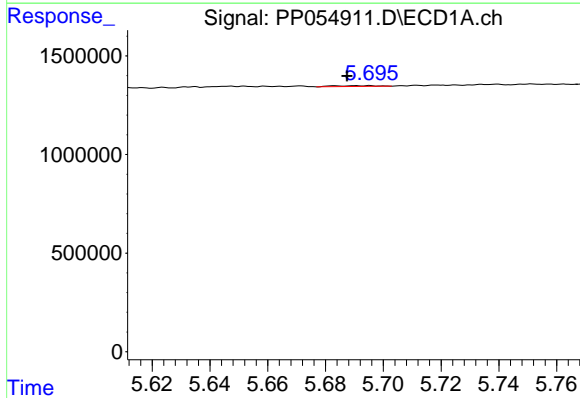
R.T.: 5.542 min  
 Delta R.T.: 0.016 min  
 Response: 108028  
 Conc: 2.46 ng/ml

Instrument :  
 ECD\_P  
 ClientSampleId :



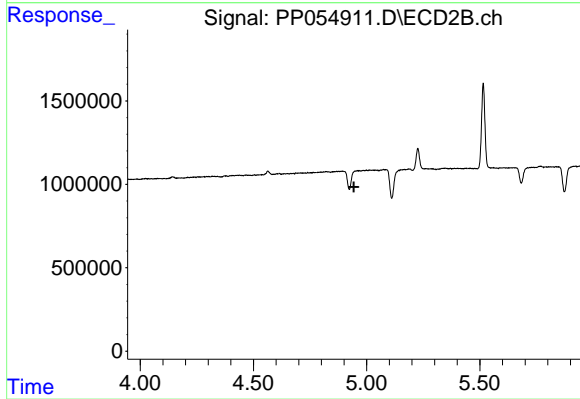
#13 AR-1232-3

R.T.: 0.000 min  
 Exp R.T. : 4.859 min  
 Response: 0  
 Conc: N.D.



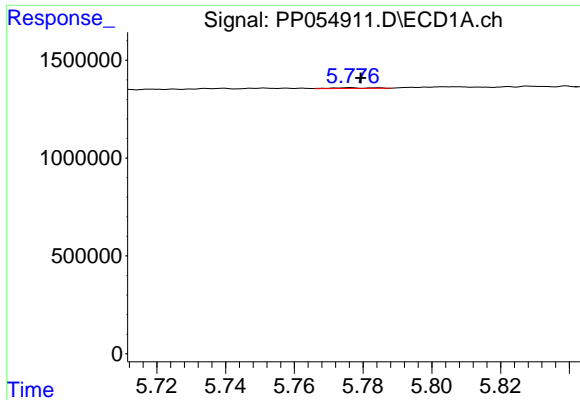
#14 AR-1232-4

R.T.: 5.695 min  
 Delta R.T.: 0.008 min  
 Response: 41430  
 Conc: 1.87 ng/ml



#14 AR-1232-4

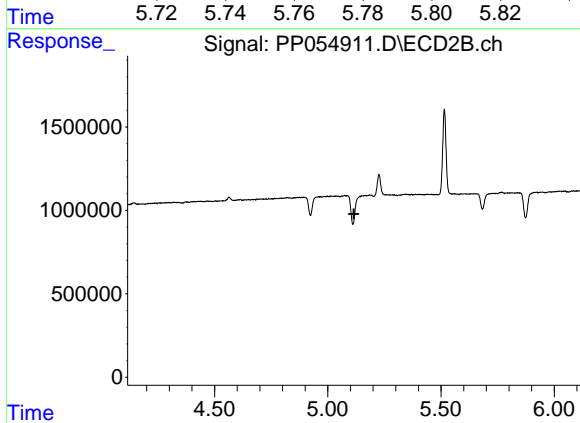
R.T.: 0.000 min  
 Exp R.T. : 4.944 min  
 Response: 0  
 Conc: N.D.



#15 AR-1232-5

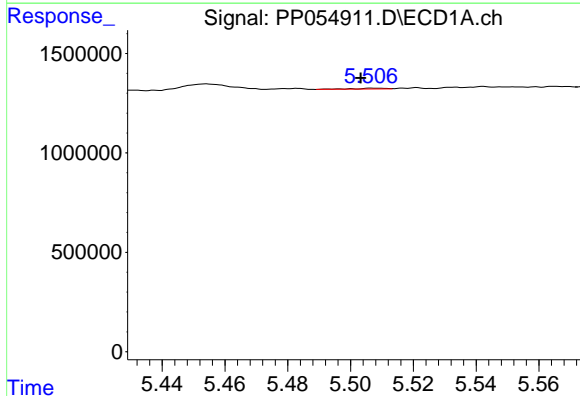
R.T.: 5.776 min  
 Delta R.T.: -0.003 min  
 Response: 31213  
 Conc: 1.78 ng/ml

Instrument :  
 ECD\_P  
 ClientSampleId :



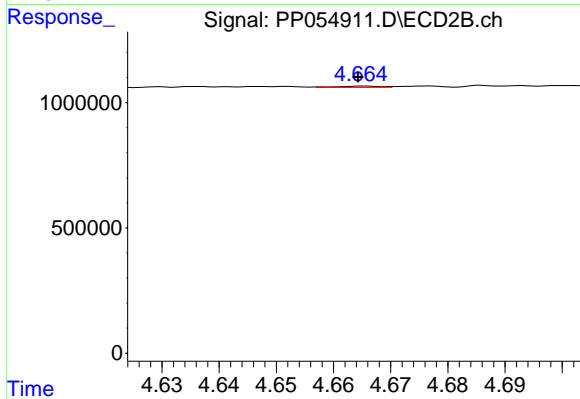
#15 AR-1232-5

R.T.: 0.000 min  
 Exp R.T. : 5.115 min  
 Response: 0  
 Conc: N.D.



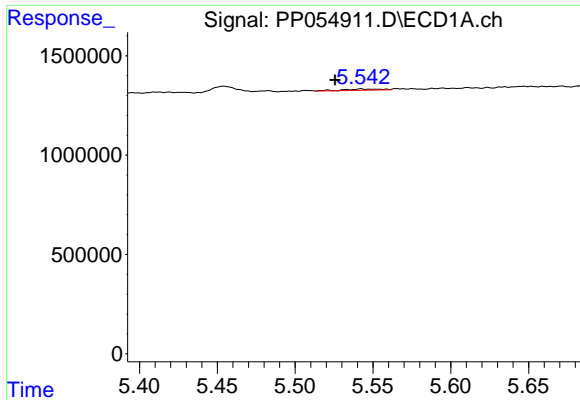
#16 AR-1242-1

R.T.: 5.507 min  
 Delta R.T.: 0.004 min  
 Response: 26155  
 Conc: 0.47 ng/ml



#16 AR-1242-1

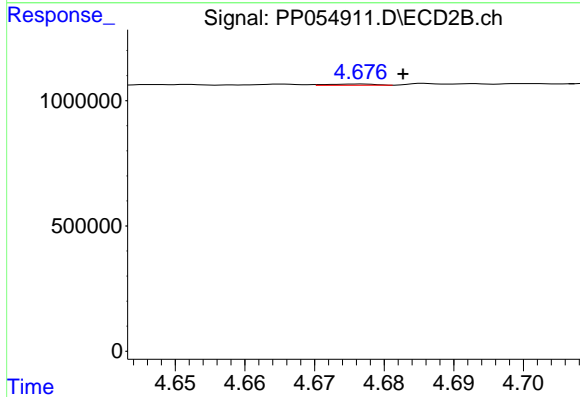
R.T.: 4.665 min  
 Delta R.T.: 0.000 min  
 Response: 28129  
 Conc: 0.69 ng/ml



#17 AR-1242-2

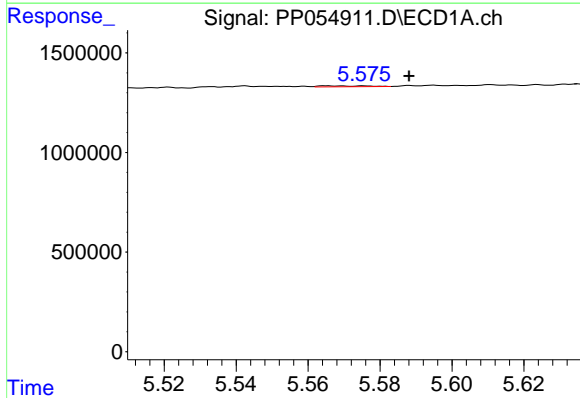
R.T.: 5.542 min  
 Delta R.T.: 0.017 min  
 Response: 108028  
 Conc: 1.35 ng/ml

Instrument :  
 ECD\_P  
 ClientSampleId :



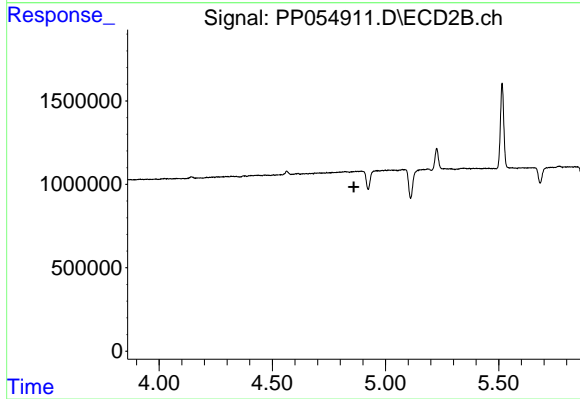
#17 AR-1242-2

R.T.: 4.676 min  
 Delta R.T.: -0.006 min  
 Response: 23808  
 Conc: 0.42 ng/ml



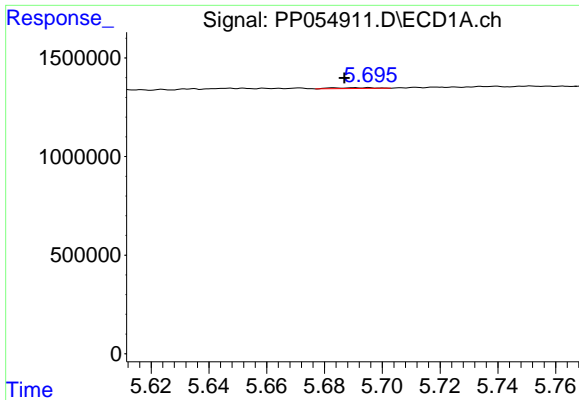
#18 AR-1242-3

R.T.: 5.566 min  
 Delta R.T.: -0.023 min  
 Response: 42894  
 Conc: 0.86 ng/ml



#18 AR-1242-3

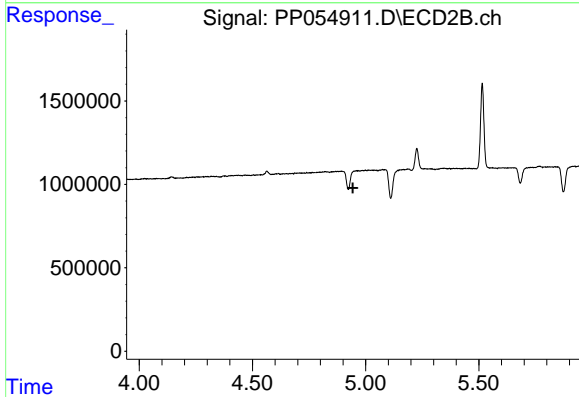
R.T.: 0.000 min  
 Exp R.T. : 4.860 min  
 Response: 0  
 Conc: N.D.



#19 AR-1242-4

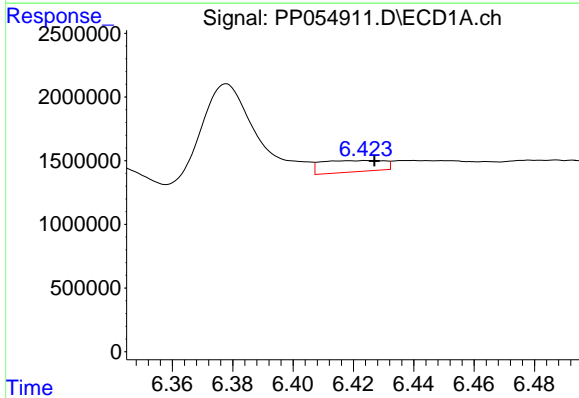
R.T.: 5.695 min  
 Delta R.T.: 0.008 min  
 Response: 41430  
 Conc: 1.03 ng/ml

Instrument :  
 ECD\_P  
 ClientSampleId :



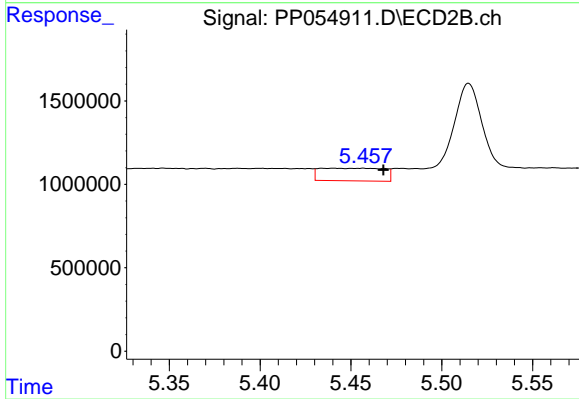
#19 AR-1242-4

R.T.: 0.000 min  
 Exp R.T. : 4.943 min  
 Response: 0  
 Conc: N.D.



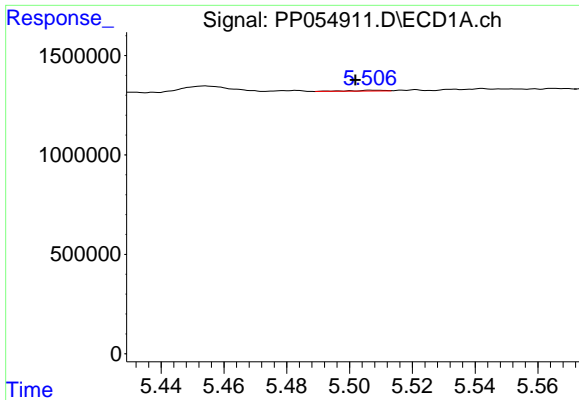
#20 AR-1242-5

R.T.: 6.424 min  
 Delta R.T.: -0.003 min  
 Response: 1290663  
 Conc: 29.03 ng/ml



#20 AR-1242-5

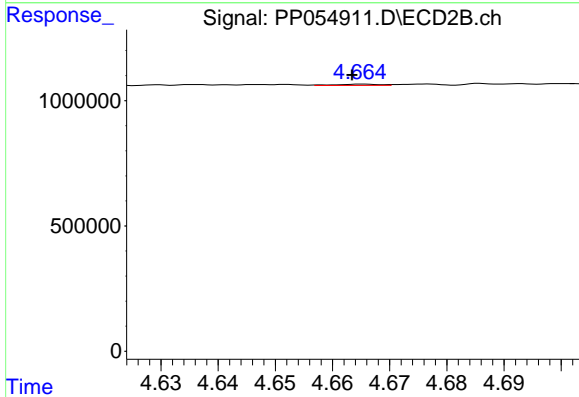
R.T.: 5.456 min  
 Delta R.T.: -0.012 min  
 Response: 1851286  
 Conc: 49.54 ng/ml



#21 AR-1248-1

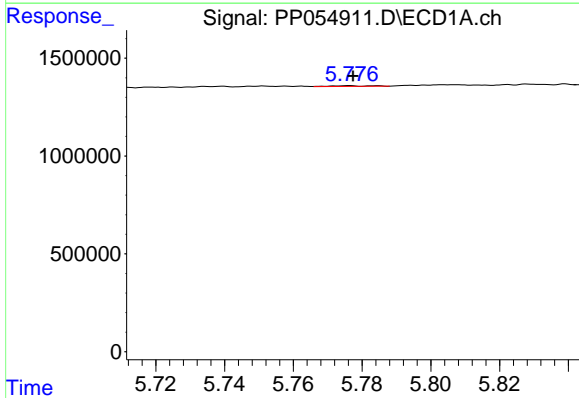
R.T.: 5.507 min  
 Delta R.T.: 0.006 min  
 Response: 26155  
 Conc: 0.63 ng/ml

Instrument :  
 ECD\_P  
 ClientSampleId :



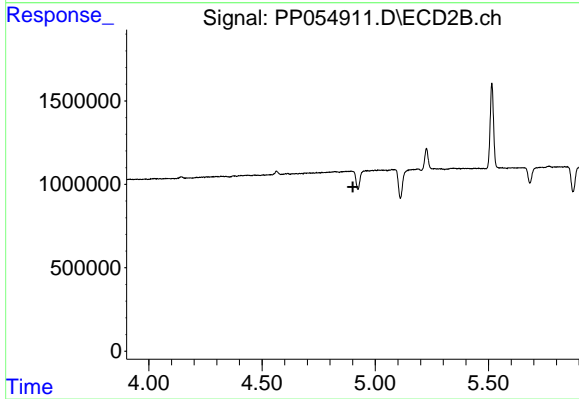
#21 AR-1248-1

R.T.: 4.665 min  
 Delta R.T.: 0.002 min  
 Response: 28129  
 Conc: 0.91 ng/ml



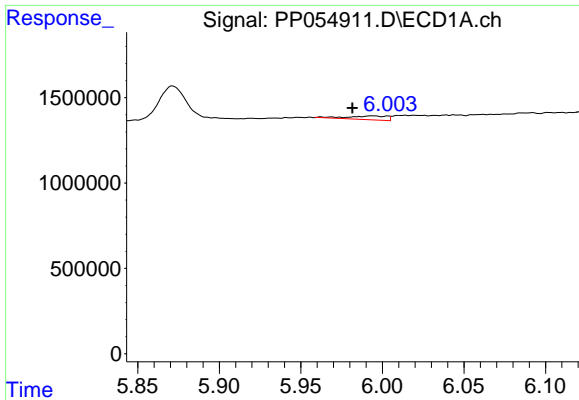
#22 AR-1248-2

R.T.: 5.776 min  
 Delta R.T.: -0.001 min  
 Response: 31213  
 Conc: 0.49 ng/ml



#22 AR-1248-2

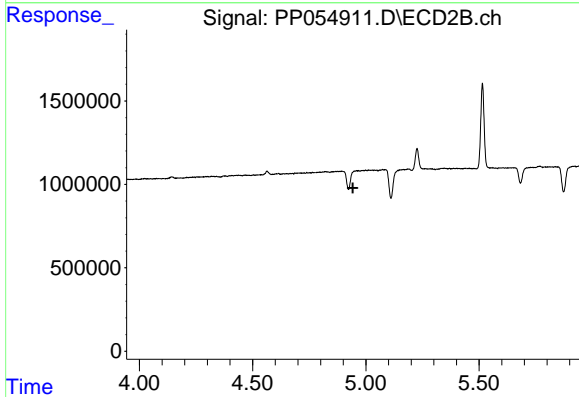
R.T.: 0.000 min  
 Exp R.T. : 4.901 min  
 Response: 0  
 Conc: N.D.



#23 AR-1248-3

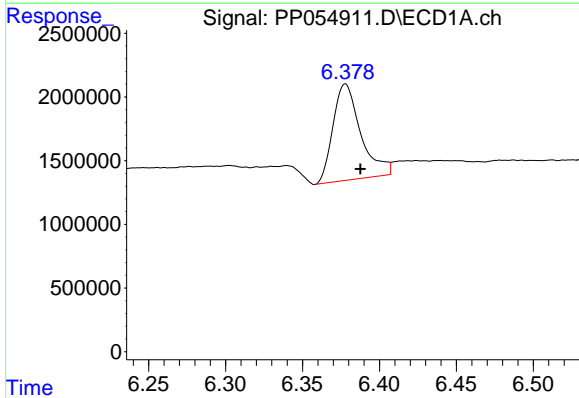
R.T.: 5.994 min  
 Delta R.T.: 0.013 min  
 Response: 360464  
 Conc: 5.21 ng/ml

Instrument :  
 ECD\_P  
 ClientSampleId :



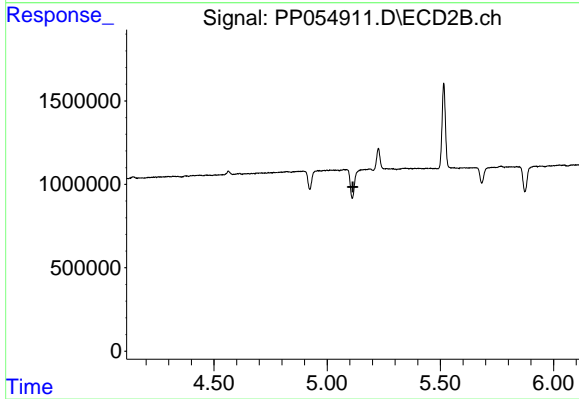
#23 AR-1248-3

R.T.: 0.000 min  
 Exp R.T. : 4.942 min  
 Response: 0  
 Conc: N.D.



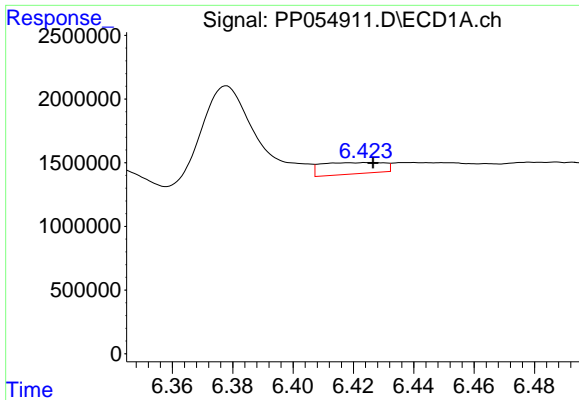
#24 AR-1248-4

R.T.: 6.378 min  
 Delta R.T.: -0.010 min  
 Response: 9465302  
 Conc: 124.82 ng/ml



#24 AR-1248-4

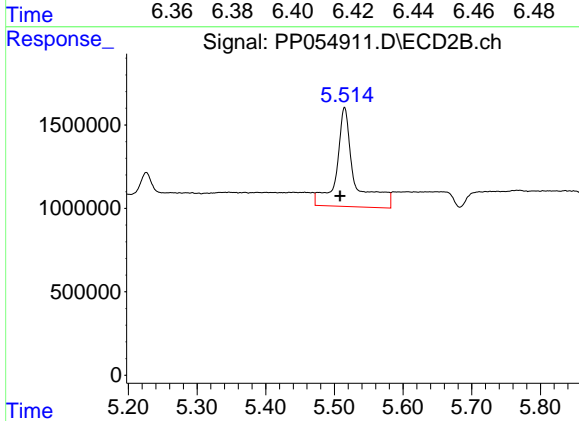
R.T.: 0.000 min  
 Exp R.T. : 5.114 min  
 Response: 0  
 Conc: N.D.



#25 AR-1248-5

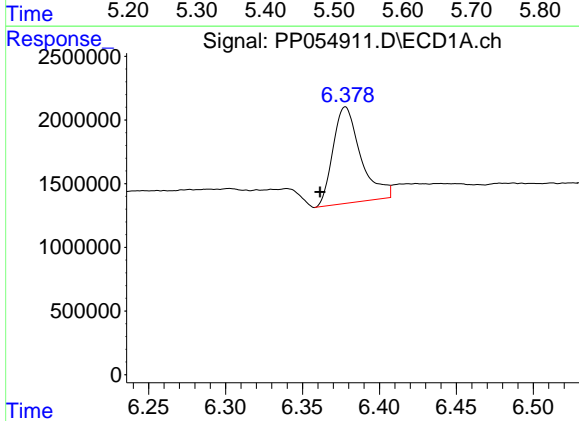
R.T.: 6.424 min  
 Delta R.T.: -0.002 min  
 Response: 1290663  
 Conc: 17.49 ng/ml

Instrument :  
 ECD\_P  
 ClientSampleId :



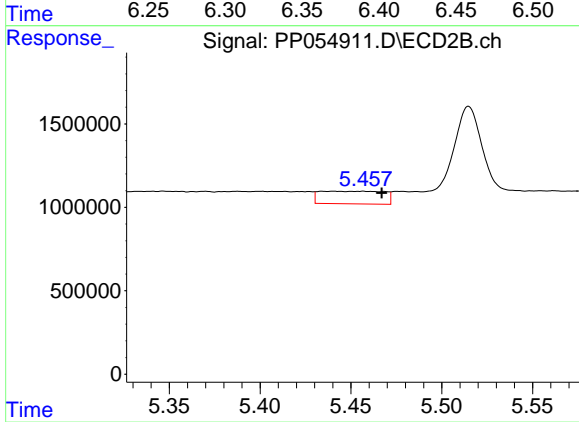
#25 AR-1248-5

R.T.: 5.515 min  
 Delta R.T.: 0.007 min  
 Response: 10970788  
 Conc: 223.12 ng/ml



#26 AR-1254-1

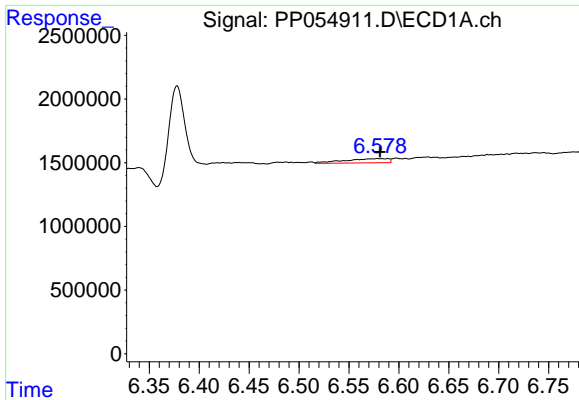
R.T.: 6.378 min  
 Delta R.T.: 0.017 min  
 Response: 9465302  
 Conc: 119.98 ng/ml



#26 AR-1254-1

R.T.: 5.456 min  
 Delta R.T.: -0.011 min  
 Response: 1851286  
 Conc: 22.92 ng/ml

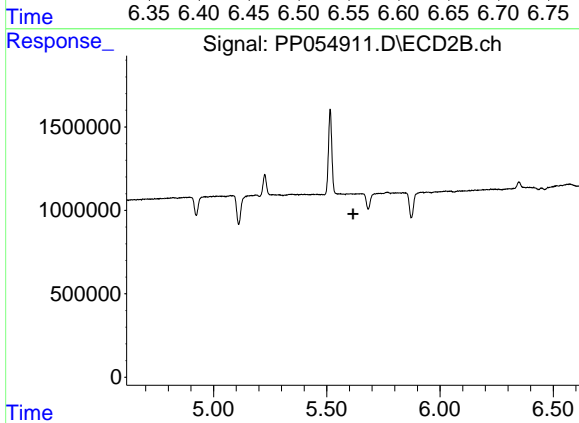




#27 AR-1254-2

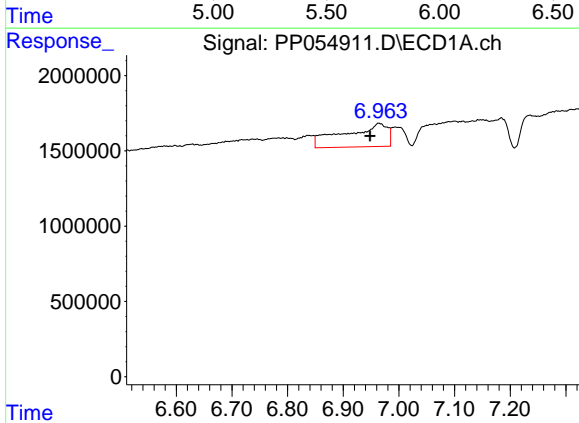
R.T.: 6.579 min  
 Delta R.T.: -0.002 min  
 Response: 991235  
 Conc: 8.19 ng/ml

Instrument :  
 ECD\_P  
 ClientSampleId :



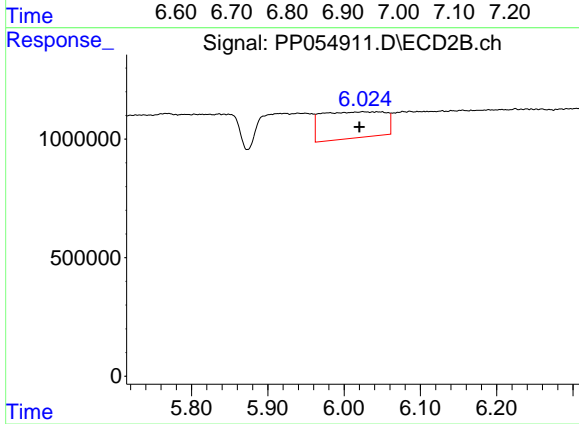
#27 AR-1254-2

R.T.: 0.000 min  
 Exp R.T. : 5.616 min  
 Response: 0  
 Conc: N.D.



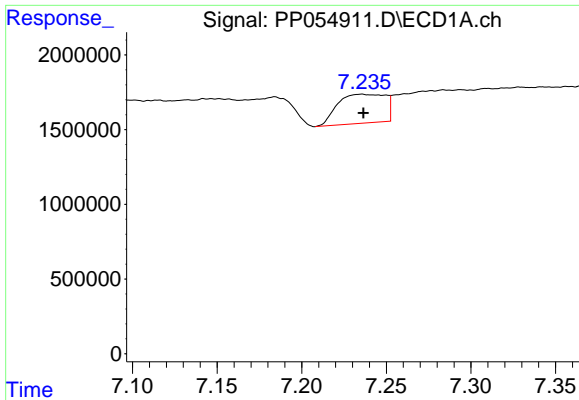
#28 AR-1254-3

R.T.: 6.964 min  
 Delta R.T.: 0.015 min  
 Response: 8277386  
 Conc: 67.58 ng/ml



#28 AR-1254-3

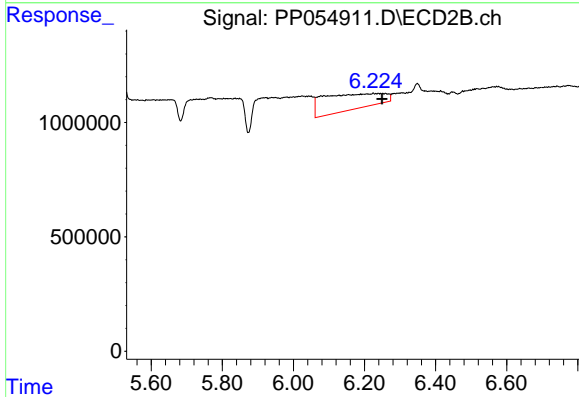
R.T.: 6.025 min  
 Delta R.T.: 0.005 min  
 Response: 6400901  
 Conc: 57.45 ng/ml



#29 AR-1254-4

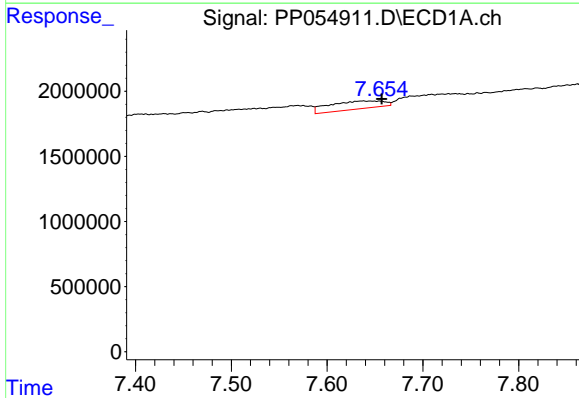
R.T.: 7.235 min  
 Delta R.T.: -0.001 min  
 Response: 3786571  
 Conc: 42.97 ng/ml

Instrument :  
 ECD\_P  
 ClientSampleId :



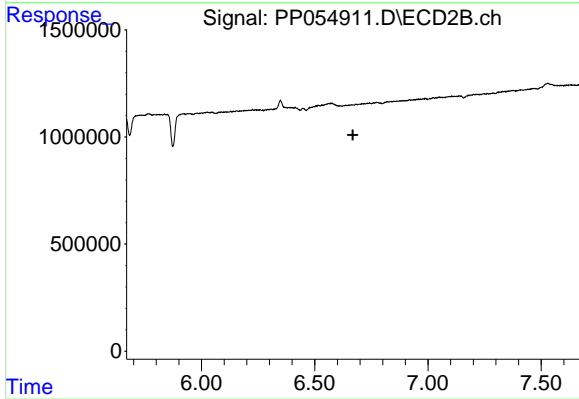
#29 AR-1254-4

R.T.: 6.225 min  
 Delta R.T.: -0.025 min  
 Response: 8074559  
 Conc: 131.28 ng/ml



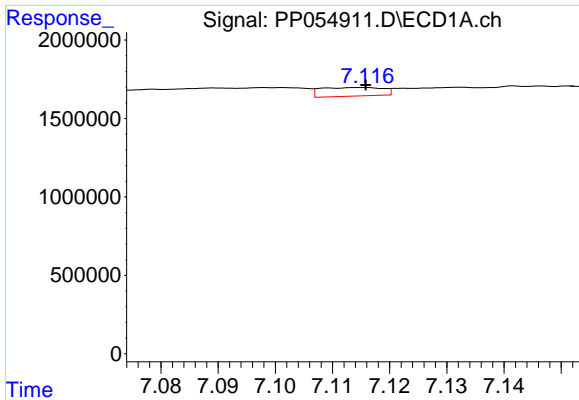
#30 AR-1254-5

R.T.: 7.638 min  
 Delta R.T.: -0.019 min  
 Response: 2423786  
 Conc: 23.96 ng/ml



#30 AR-1254-5

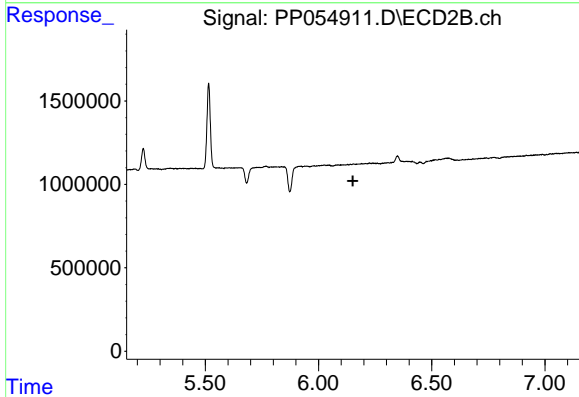
R.T.: 0.000 min  
 Exp R.T.: 6.669 min  
 Response: 0  
 Conc: N.D.



#31 AR-1260-1

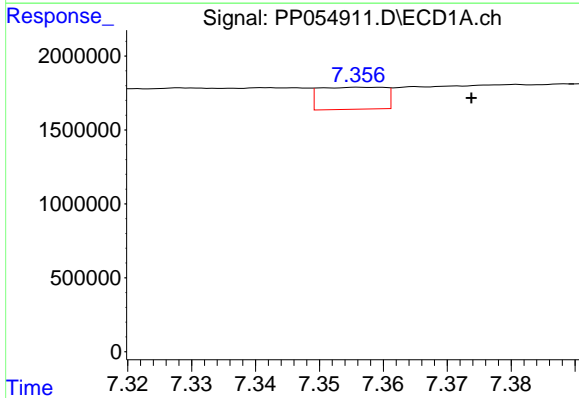
R.T.: 7.115 min  
 Delta R.T.: 0.000 min  
 Response: 414326  
 Conc: 4.35 ng/ml

Instrument :  
 ECD\_P  
 ClientSampleId :



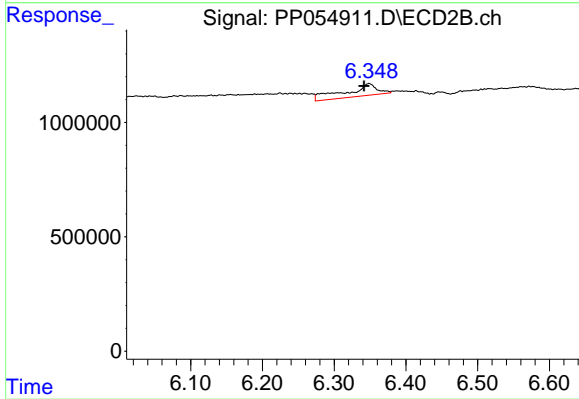
#31 AR-1260-1

R.T.: 0.000 min  
 Exp R.T. : 6.152 min  
 Response: 0  
 Conc: N.D.



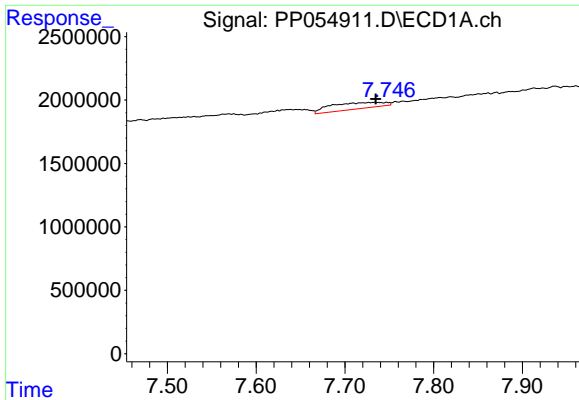
#32 AR-1260-2

R.T.: 7.357 min  
 Delta R.T.: -0.016 min  
 Response: 1056843  
 Conc: 9.39 ng/ml



#32 AR-1260-2

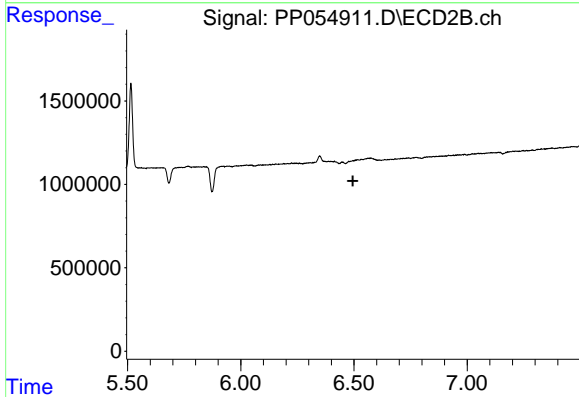
R.T.: 6.348 min  
 Delta R.T.: 0.007 min  
 Response: 1624823  
 Conc: 18.07 ng/ml



#33 AR-1260-3

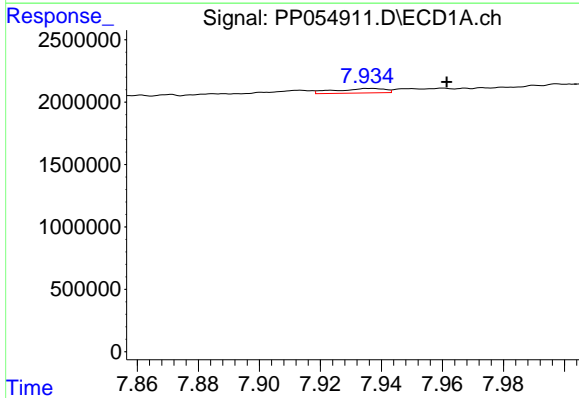
R.T.: 7.734 min  
 Delta R.T.: -0.001 min  
 Response: 2050202  
 Conc: 25.46 ng/ml

Instrument :  
 ECD\_P  
 ClientSampleId :



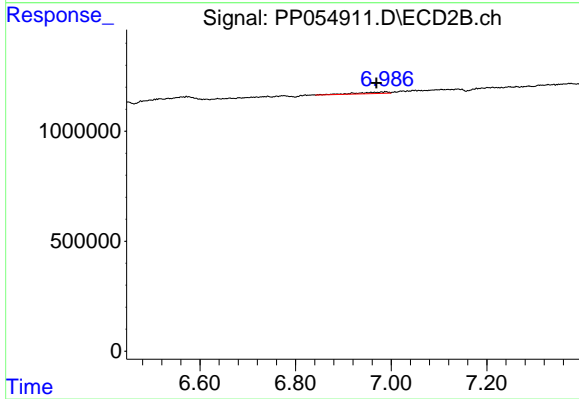
#33 AR-1260-3

R.T.: 0.000 min  
 Exp R.T. : 6.495 min  
 Response: 0  
 Conc: N.D.



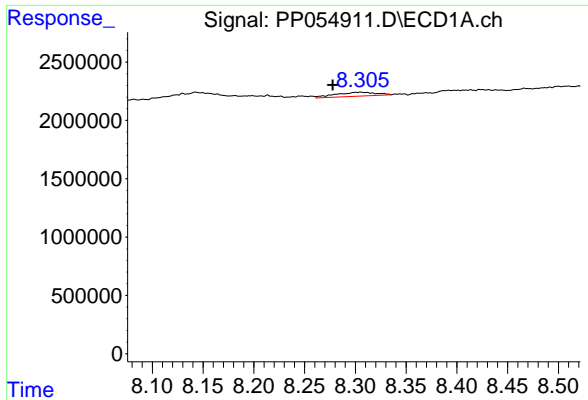
#34 AR-1260-4

R.T.: 7.936 min  
 Delta R.T.: -0.025 min  
 Response: 400049  
 Conc: 4.12 ng/ml



#34 AR-1260-4

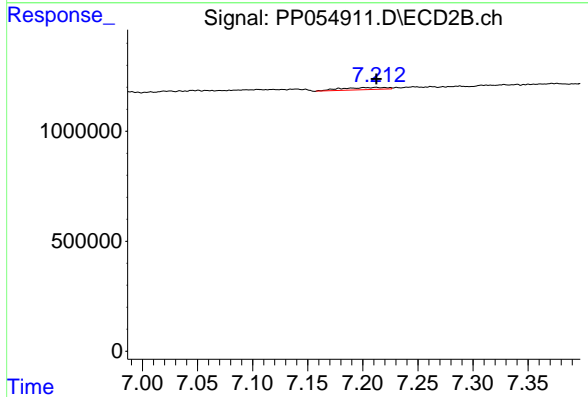
R.T.: 6.989 min  
 Delta R.T.: 0.020 min  
 Response: 269635  
 Conc: 3.77 ng/ml



#35 AR-1260-5

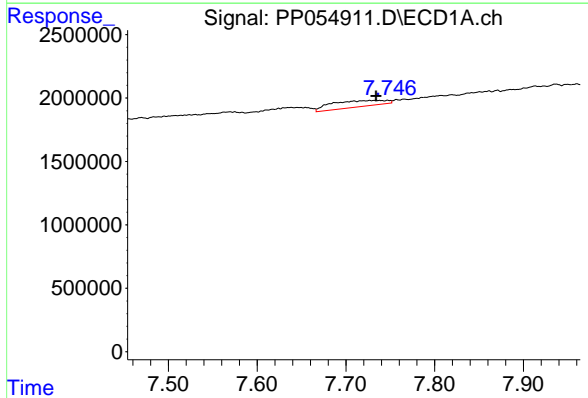
R.T.: 8.305 min  
 Delta R.T.: 0.028 min  
 Response: 938056  
 Conc: 5.27 ng/ml

Instrument :  
 ECD\_P  
 ClientSampleId :



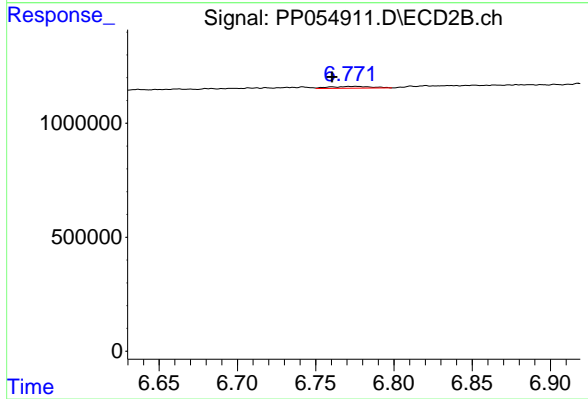
#35 AR-1260-5

R.T.: 7.213 min  
 Delta R.T.: 0.000 min  
 Response: 289265  
 Conc: 1.88 ng/ml



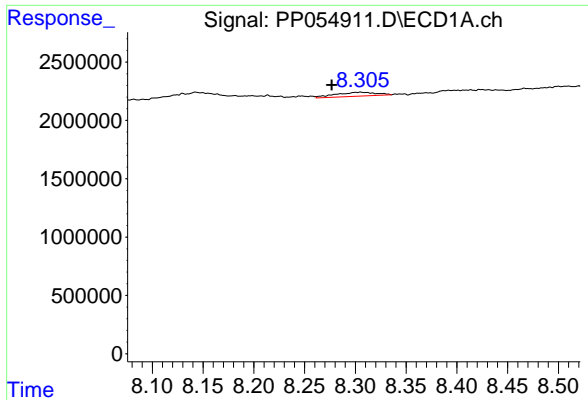
#36 AR-1262-1

R.T.: 7.734 min  
 Delta R.T.: 0.000 min  
 Response: 2050202  
 Conc: 17.38 ng/ml



#36 AR-1262-1

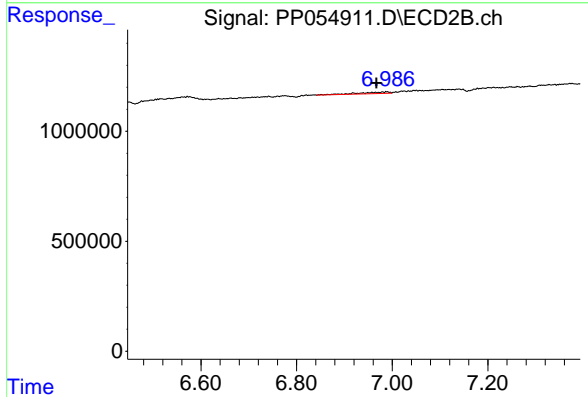
R.T.: 6.774 min  
 Delta R.T.: 0.014 min  
 Response: 144527  
 Conc: 3.36 ng/ml



#37 AR-1262-2

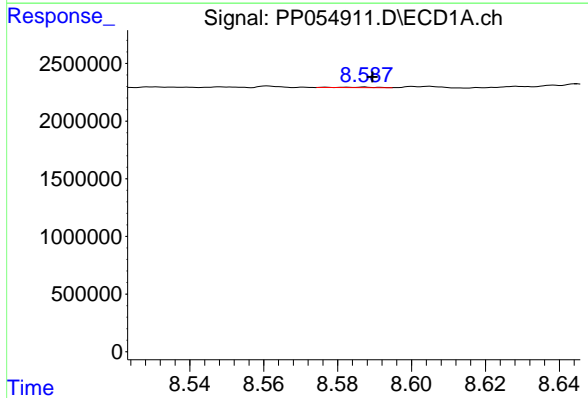
R.T.: 8.305 min  
 Delta R.T.: 0.028 min  
 Response: 938056  
 Conc: 4.66 ng/ml

Instrument :  
 ECD\_P  
 ClientSampleId :



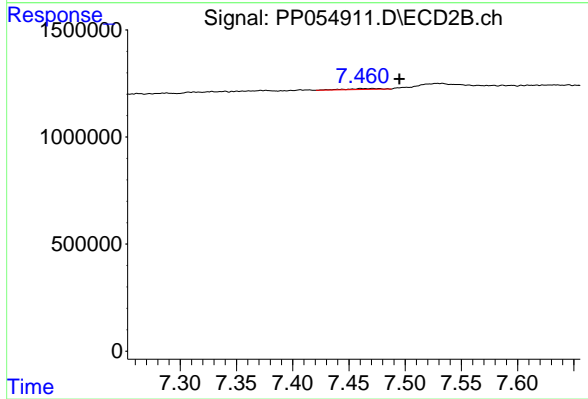
#37 AR-1262-2

R.T.: 6.989 min  
 Delta R.T.: 0.022 min  
 Response: 269635  
 Conc: 2.91 ng/ml



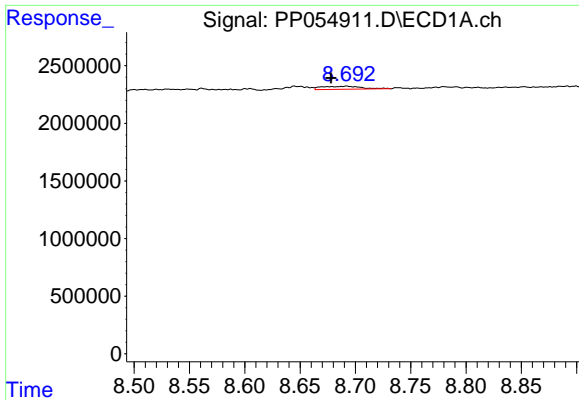
#38 AR-1262-3

R.T.: 8.587 min  
 Delta R.T.: -0.002 min  
 Response: 31027  
 Conc: 0.22 ng/ml



#38 AR-1262-3

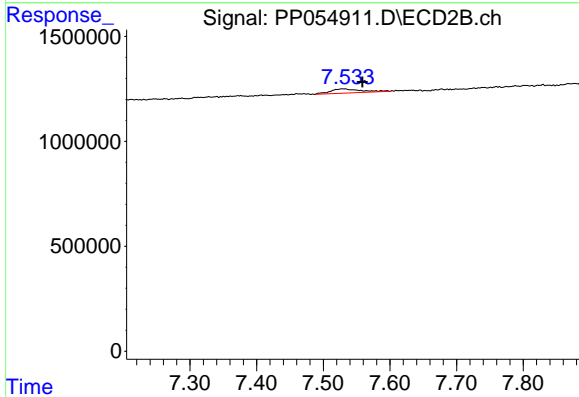
R.T.: 7.471 min  
 Delta R.T.: -0.023 min  
 Response: 92182  
 Conc: 1.27 ng/ml



#39 AR-1262-4

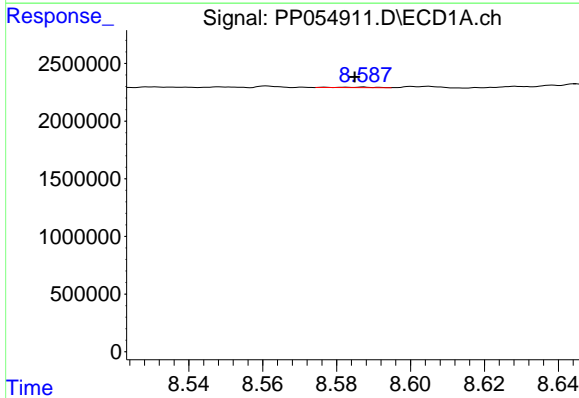
R.T.: 8.692 min  
 Delta R.T.: 0.014 min  
 Response: 667856  
 Conc: 8.69 ng/ml

Instrument :  
 ECD\_P  
 ClientSampleId :



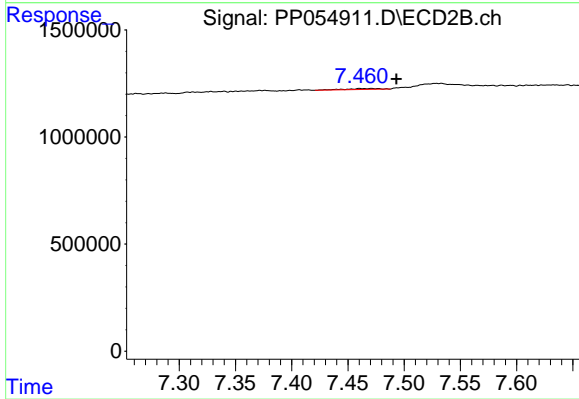
#39 AR-1262-4

R.T.: 7.530 min  
 Delta R.T.: -0.029 min  
 Response: 626696  
 Conc: 4.79 ng/ml



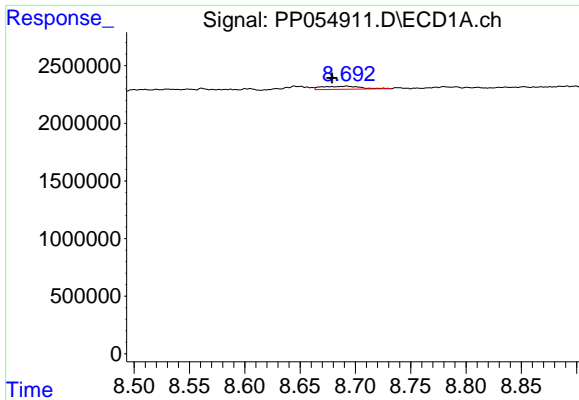
#41 AR-1268-1

R.T.: 8.587 min  
 Delta R.T.: 0.002 min  
 Response: 31027  
 Conc: 0.13 ng/ml



#41 AR-1268-1

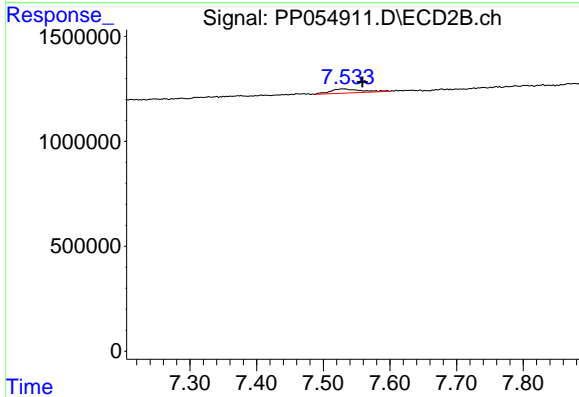
R.T.: 7.471 min  
 Delta R.T.: -0.022 min  
 Response: 92182  
 Conc: 0.43 ng/ml



#42 AR-1268-2

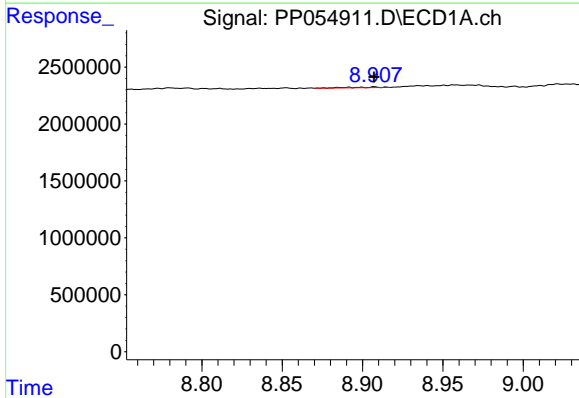
R.T.: 8.692 min  
 Delta R.T.: 0.013 min  
 Response: 667856  
 Conc: 2.94 ng/ml

Instrument :  
 ECD\_P  
 ClientSampleId :



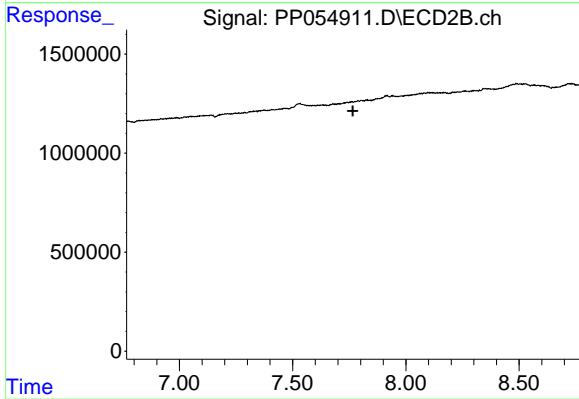
#42 AR-1268-2

R.T.: 7.530 min  
 Delta R.T.: -0.029 min  
 Response: 626696  
 Conc: 3.21 ng/ml



#43 AR-1268-3

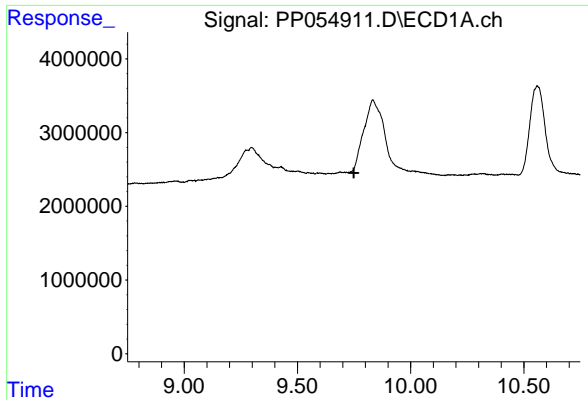
R.T.: 8.907 min  
 Delta R.T.: 0.000 min  
 Response: 78752  
 Conc: 0.39 ng/ml



#43 AR-1268-3

R.T.: 0.000 min  
 Exp R.T. : 7.766 min  
 Response: 0  
 Conc: N.D.

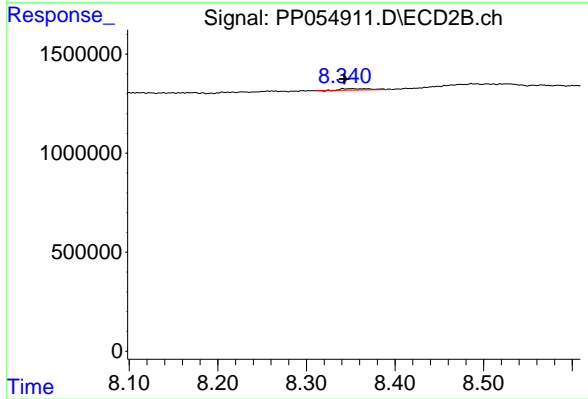




#45 AR-1268-5

R.T.: 0.000 min  
 Exp R.T.: 9.749 min  
 Response: 0  
 Conc: N.D.

Instrument :  
 ECD\_P  
 ClientSampleId :



#45 AR-1268-5

R.T.: 8.351 min  
 Delta R.T.: 0.008 min  
 Response: 169585  
 Conc: 0.32 ng/ml