

Data Path : Z:\pestpcbsrv\HPCHEM1\ECD_P\Data\PP012822\
 Data File : PP043317.D
 Signal(s) : Signal #1: ECD1A.CH Signal #2: ECD2B.CH
 Acq On : 28 Jan 2022 13:15
 Operator : AJ\MA
 Sample : PB142338BS
 Misc :
 ALS Vial : 13 Sample Multiplier: 1

Instrument :
 ECD_P
ClientSampleId :
 PB142338BS

Integration File signal 1: autoint1.e
 Integration File signal 2: autoint2.e
 Quant Time: Jan 28 23:32:42 2022
 Quant Method : Z:\pestpcbsrv\HPCHEM1\ECD_P\methods\PP012422.M
 Quant Title : GC EXTRACTABLES
 QLast Update : Tue Jan 25 03:09:04 2022
 Response via : Initial Calibration
 Integrator: ChemStation 6890 Scale Mode: Small noise peaks clipped

Volume Inj. : 2 µl
 Signal #1 Phase : ZB-MR1 Signal #2 Phase: ZB-MR2
 Signal #1 Info : 30Mx0.32mmx 0.50µ Signal #2 Info : 30M x 0.32mm x 0.25µm

Compound	RT#1	RT#2	Resp#1	Resp#2	ng/ml	ng/ml

System Monitoring Compounds						
1) SA Tetrachlo...	4.868	4.034	453193	461854	19.716	20.727
2) SA Decachlor...	10.788	9.360	344067	430225	24.293	23.077
Target Compounds						
3) L1 AR-1016-1	6.171	5.297	297564	413766	452.506	456.282
4) L1 AR-1016-2	6.193	5.316	450348	584109	440.881	452.855
5) L1 AR-1016-3	6.260	5.510	274598	318762	431.417	447.009
6) L1 AR-1016-4	6.364	5.561	219579	240943	446.704	436.602
7) L1 AR-1016-5	6.679	5.792	209060	306245	416.382	457.548
31) L7 AR-1260-1	7.852	6.891	386329	587133	500.490	501.893
32) L7 AR-1260-2	8.115	7.088	445214	658659	522.938	500.754
33) L7 AR-1260-3	8.482	7.244	275312	600126	417.455	482.103
34) L7 AR-1260-4	8.709	7.729	348300	427976	455.541	436.302
35) L7 AR-1260-5	9.026	7.976	665725	982303	504.149	443.905

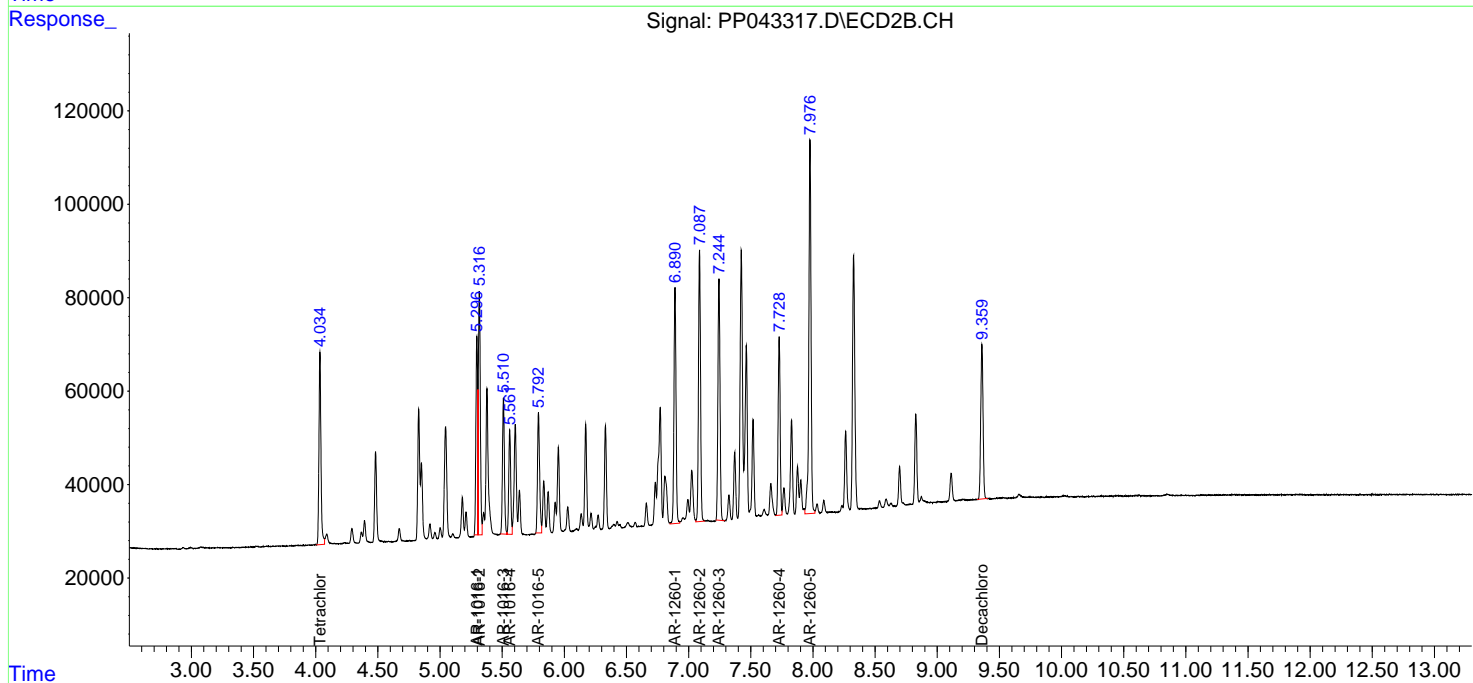
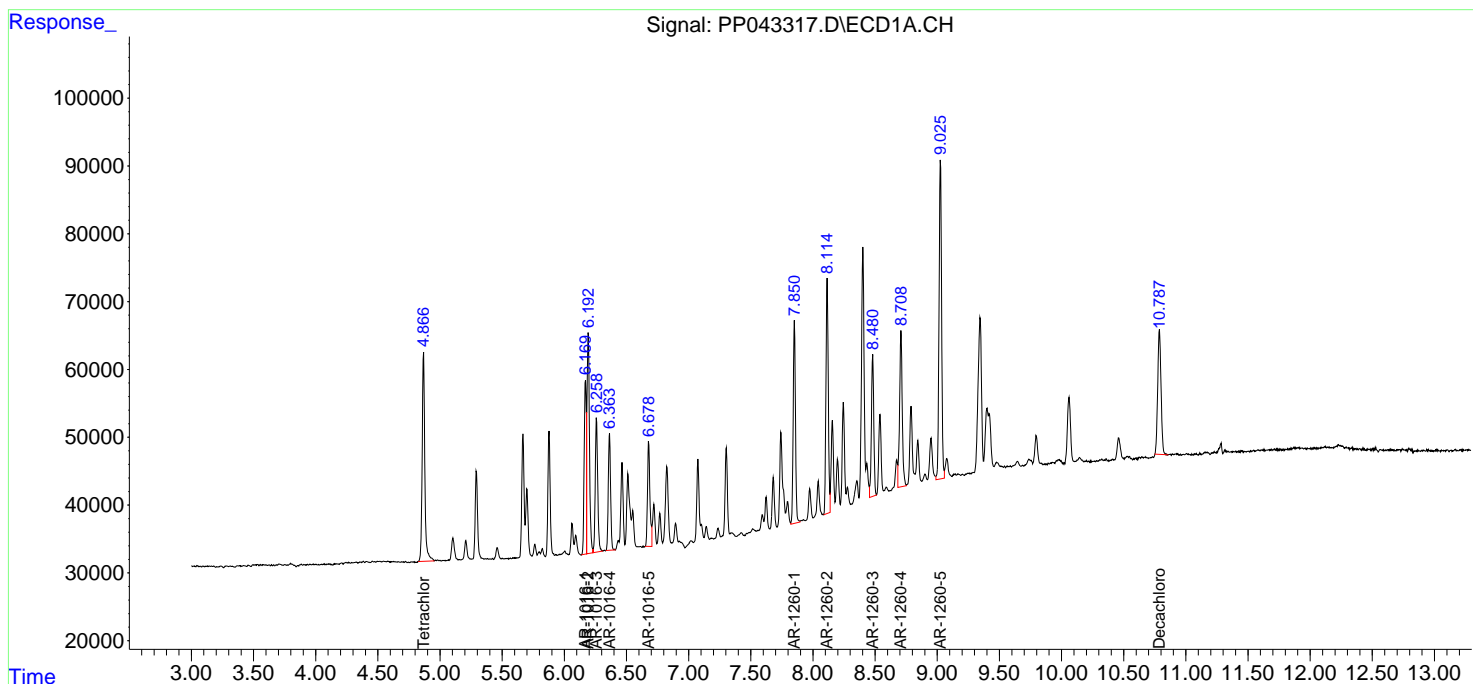
(f)=RT Delta > 1/2 Window (#)=Amounts differ by > 25% (m)=manual int.

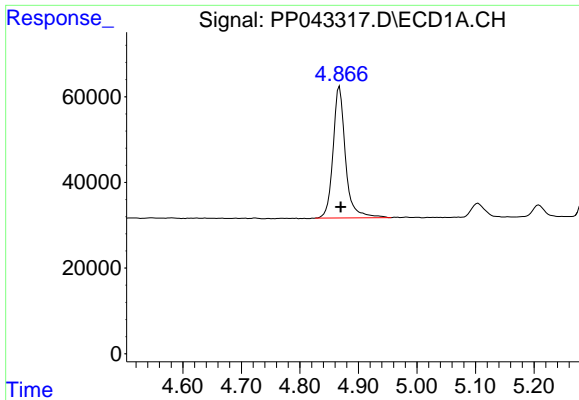
Data Path : Z:\pestpcbsrv\HPCHEM1\ECD_P\Data\PP012822\
 Data File : PP043317.D
 Signal(s) : Signal #1: ECD1A.CH Signal #2: ECD2B.CH
 Acq On : 28 Jan 2022 13:15
 Operator : AJ\MA
 Sample : PB142338BS
 Misc :
 ALS Vial : 13 Sample Multiplier: 1

Instrument :
 ECD_P
 ClientSampleId :
 PB142338BS

Integration File signal 1: autoint1.e
 Integration File signal 2: autoint2.e
 Quant Time: Jan 28 23:32:42 2022
 Quant Method : Z:\pestpcbsrv\HPCHEM1\ECD_P\methods\PP012422.M
 Quant Title : GC EXTRACTABLES
 QLast Update : Tue Jan 25 03:09:04 2022
 Response via : Initial Calibration
 Integrator: ChemStation 6890 Scale Mode: Small noise peaks clipped

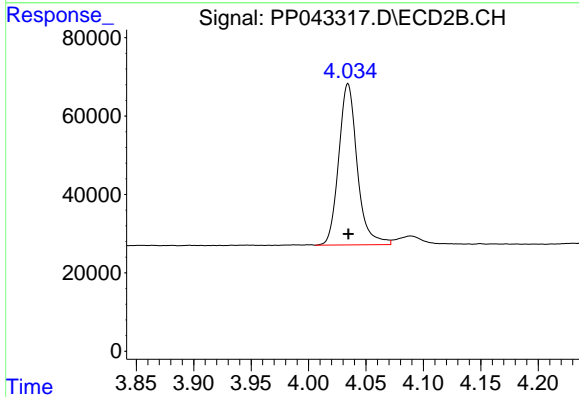
Volume Inj. : 2 µl
 Signal #1 Phase : ZB-MR1 Signal #2 Phase: ZB-MR2
 Signal #1 Info : 30Mx0.32mmx 0.50µ Signal #2 Info : 30M x 0.32mm x 0.25µm



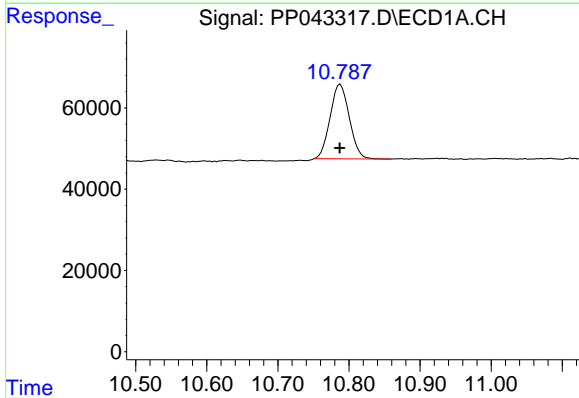


#1 Tetrachloro-m-xylene
 R.T.: 4.868 min
 Delta R.T.: -0.002 min
 Response: 453193
 Conc: 19.72 ng/ml

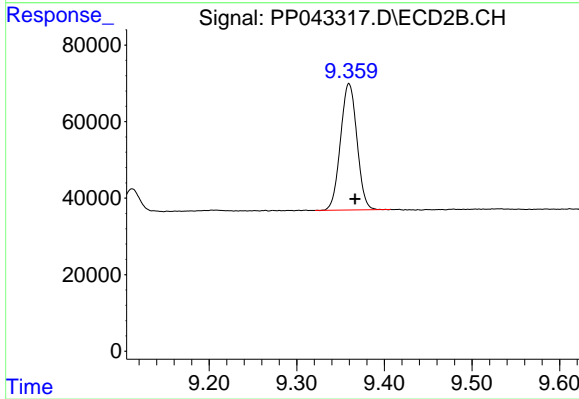
Instrument :
 ECD_P
 ClientSampleId :
 PB142338BS



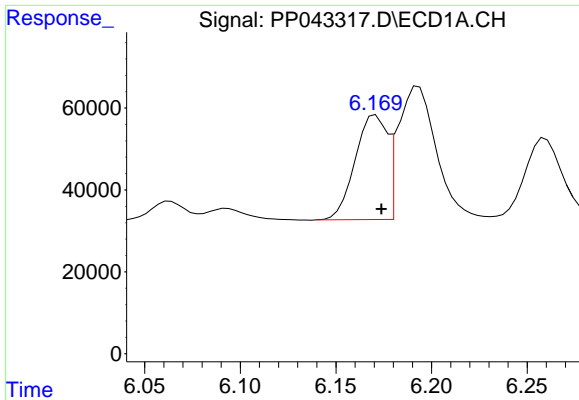
#1 Tetrachloro-m-xylene
 R.T.: 4.034 min
 Delta R.T.: 0.000 min
 Response: 461854
 Conc: 20.73 ng/ml



#2 Decachlorobiphenyl
 R.T.: 10.788 min
 Delta R.T.: 0.000 min
 Response: 344067
 Conc: 24.29 ng/ml



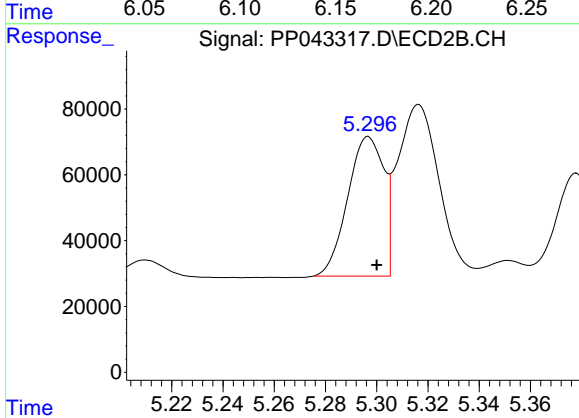
#2 Decachlorobiphenyl
 R.T.: 9.360 min
 Delta R.T.: -0.007 min
 Response: 430225
 Conc: 23.08 ng/ml



#3 AR-1016-1

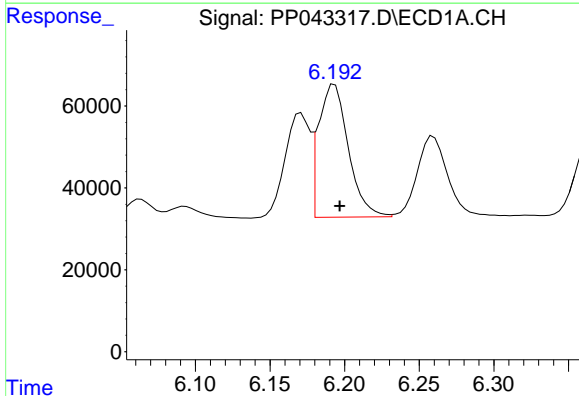
R.T.: 6.171 min
 Delta R.T.: -0.003 min
 Response: 297564
 Conc: 452.51 ng/ml

Instrument :
 ECD_P
 ClientSampleId :
 PB142338BS



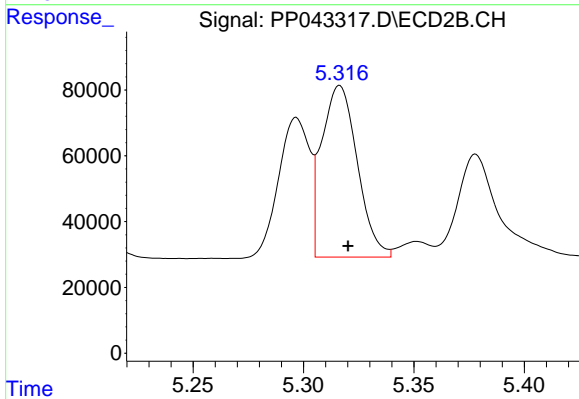
#3 AR-1016-1

R.T.: 5.297 min
 Delta R.T.: -0.003 min
 Response: 413766
 Conc: 456.28 ng/ml



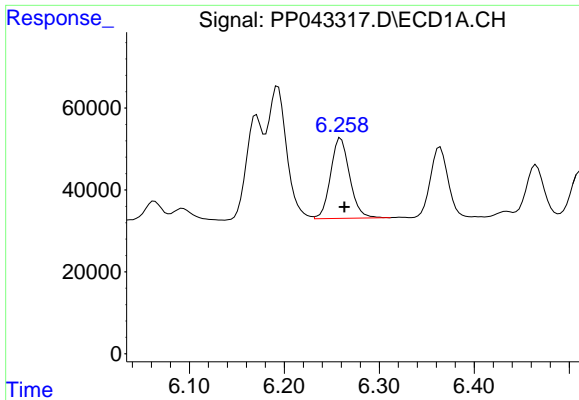
#4 AR-1016-2

R.T.: 6.193 min
 Delta R.T.: -0.003 min
 Response: 450348
 Conc: 440.88 ng/ml



#4 AR-1016-2

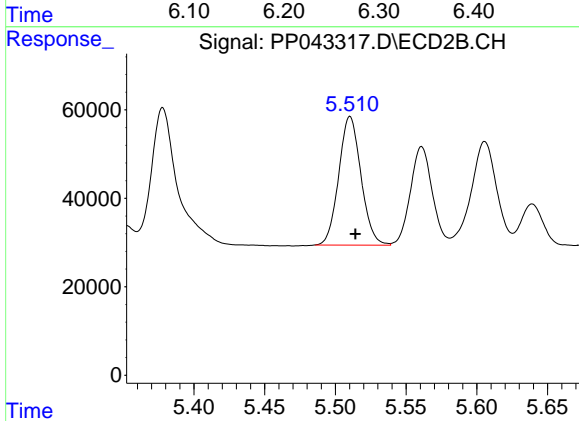
R.T.: 5.316 min
 Delta R.T.: -0.004 min
 Response: 584109
 Conc: 452.85 ng/ml



#5 AR-1016-3

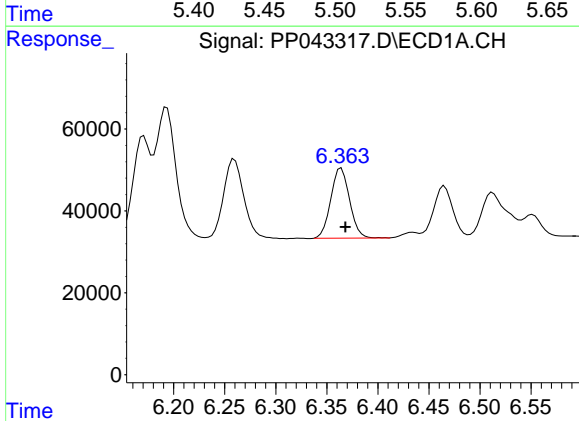
R.T.: 6.260 min
 Delta R.T.: -0.004 min
 Response: 274598
 Conc: 431.42 ng/ml

Instrument :
 ECD_P
 ClientSampleId :
 PB142338BS



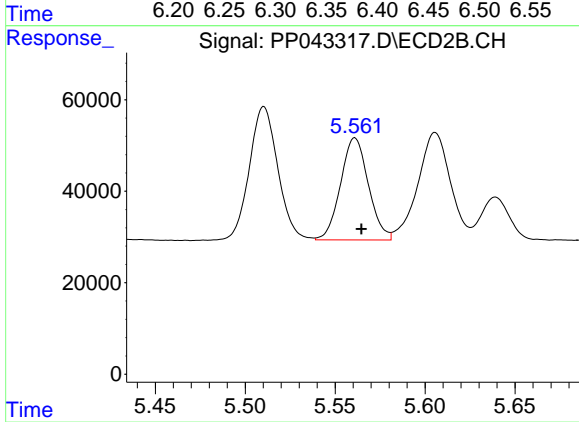
#5 AR-1016-3

R.T.: 5.510 min
 Delta R.T.: -0.004 min
 Response: 318762
 Conc: 447.01 ng/ml



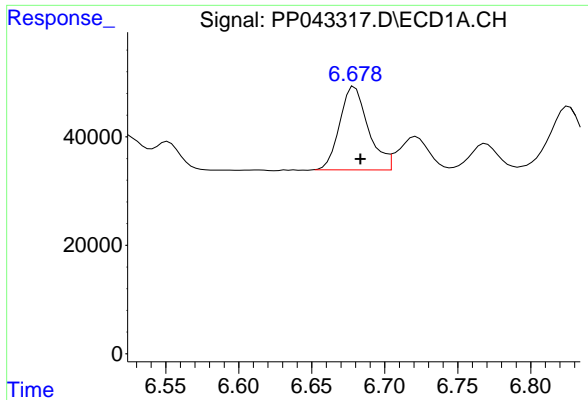
#6 AR-1016-4

R.T.: 6.364 min
 Delta R.T.: -0.004 min
 Response: 219579
 Conc: 446.70 ng/ml



#6 AR-1016-4

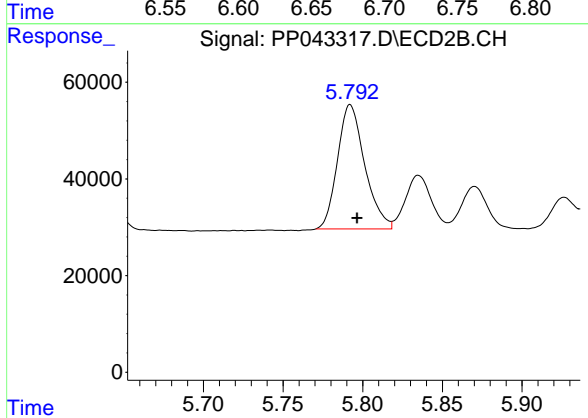
R.T.: 5.561 min
 Delta R.T.: -0.004 min
 Response: 240943
 Conc: 436.60 ng/ml



#7 AR-1016-5

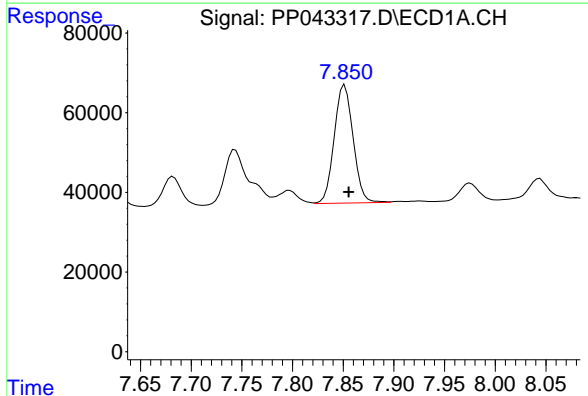
R.T.: 6.679 min
 Delta R.T.: -0.004 min
 Response: 209060
 Conc: 416.38 ng/ml

Instrument :
 ECD_P
 ClientSampleId :
 PB142338BS



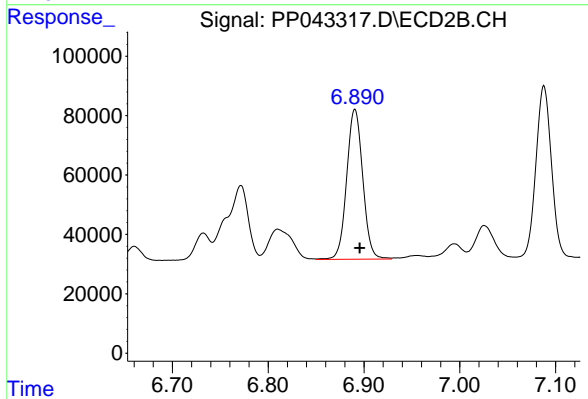
#7 AR-1016-5

R.T.: 5.792 min
 Delta R.T.: -0.004 min
 Response: 306245
 Conc: 457.55 ng/ml



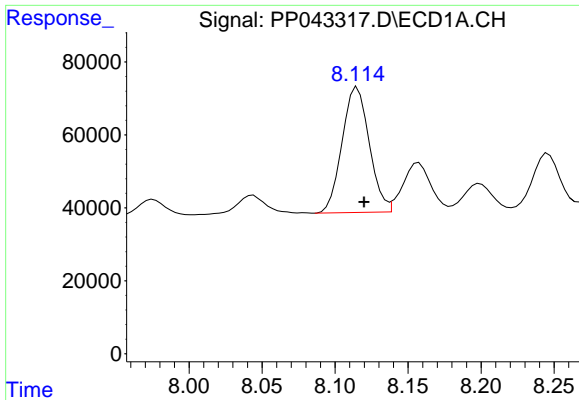
#31 AR-1260-1

R.T.: 7.852 min
 Delta R.T.: -0.004 min
 Response: 386329
 Conc: 500.49 ng/ml



#31 AR-1260-1

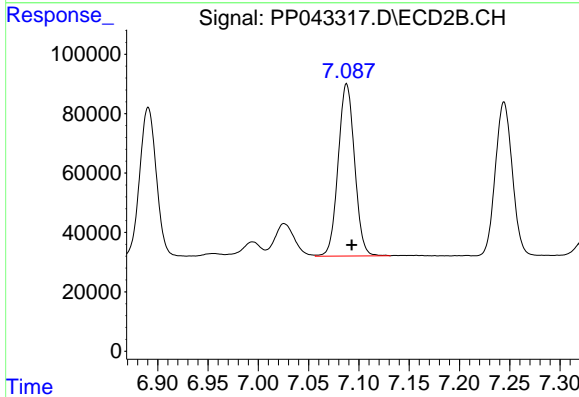
R.T.: 6.891 min
 Delta R.T.: -0.005 min
 Response: 587133
 Conc: 501.89 ng/ml



#32 AR-1260-2

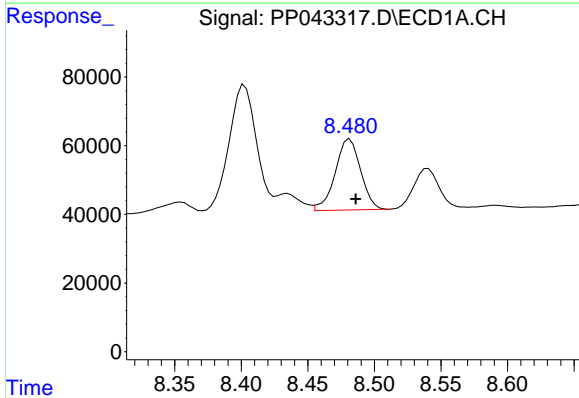
R.T.: 8.115 min
 Delta R.T.: -0.004 min
 Response: 445214
 Conc: 522.94 ng/ml

Instrument :
 ECD_P
 ClientSampleId :
 PB142338BS



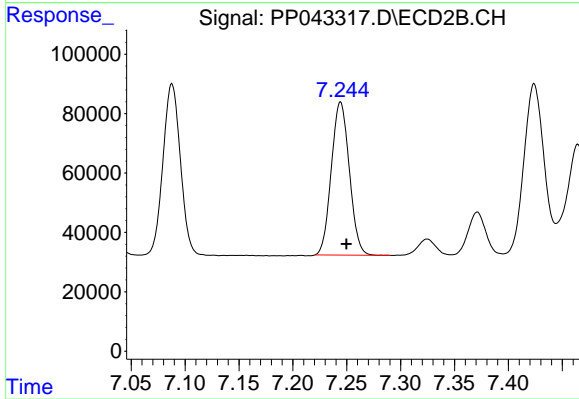
#32 AR-1260-2

R.T.: 7.088 min
 Delta R.T.: -0.005 min
 Response: 658659
 Conc: 500.75 ng/ml



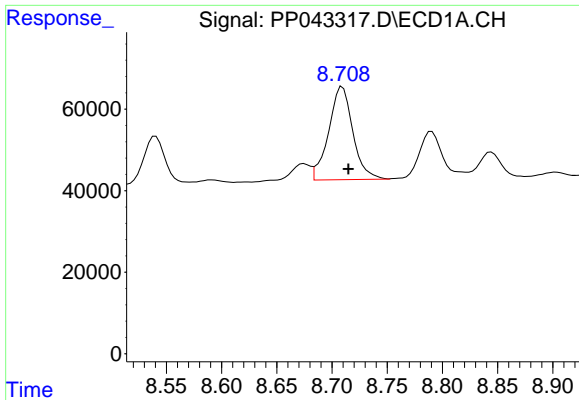
#33 AR-1260-3

R.T.: 8.482 min
 Delta R.T.: -0.004 min
 Response: 275312
 Conc: 417.45 ng/ml



#33 AR-1260-3

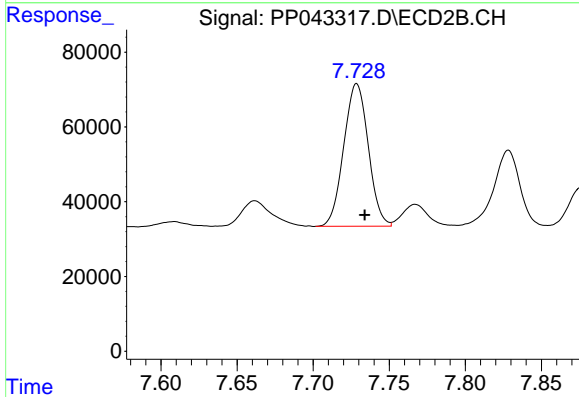
R.T.: 7.244 min
 Delta R.T.: -0.005 min
 Response: 600126
 Conc: 482.10 ng/ml



#34 AR-1260-4

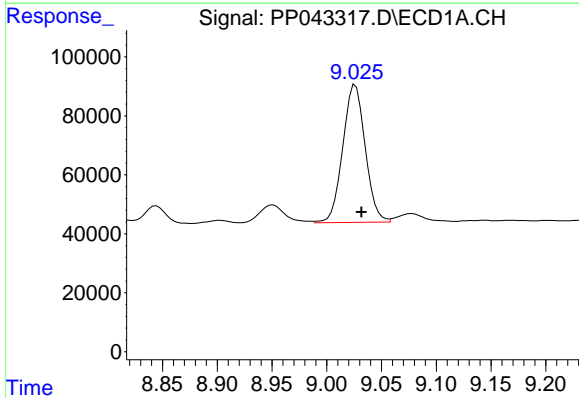
R.T.: 8.709 min
 Delta R.T.: -0.005 min
 Response: 348300
 Conc: 455.54 ng/ml

Instrument :
 ECD_P
 ClientSampleId :
 PB142338BS



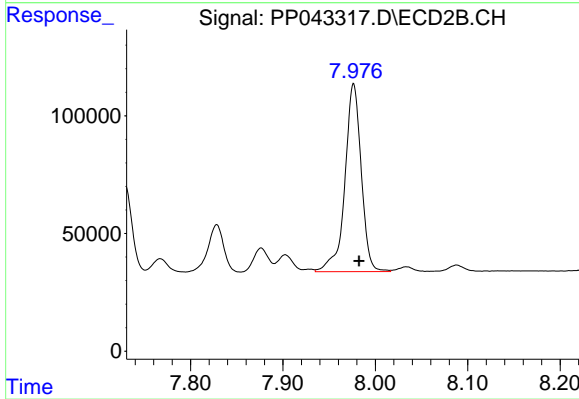
#34 AR-1260-4

R.T.: 7.729 min
 Delta R.T.: -0.005 min
 Response: 427976
 Conc: 436.30 ng/ml



#35 AR-1260-5

R.T.: 9.026 min
 Delta R.T.: -0.006 min
 Response: 665725
 Conc: 504.15 ng/ml



#35 AR-1260-5

R.T.: 7.976 min
 Delta R.T.: -0.006 min
 Response: 982303
 Conc: 443.91 ng/ml