

Data Path : Z:\pestpcbsrv\HPCHEM1\ECD_P\Data\PP012921\
 Data File : PP033059.D
 Signal(s) : Signal #1: ECD1A.CH Signal #2: ECD2B.CH
 Acq On : 29 Jan 2021 11:09
 Operator : DD\AJ
 Sample : AR1262CCC500
 Misc :
 ALS Vial : 5 Sample Multiplier: 1

Instrument :
 ECD_P
 ClientSampled :

Integration File signal 1: autoint1.e
 Integration File signal 2: autoint2.e
 Quant Time: Jan 30 00:21:27 2021
 Quant Method : Z:\pestpcbsrv\HPCHEM1\ECD_P\methods\PP012821.M
 Quant Title : GC EXTRACTABLES
 QLast Update : Fri Jan 29 04:07:51 2021
 Response via : Initial Calibration
 Integrator: ChemStation 6890 Scale Mode: Small noise peaks clipped

Volume Inj. : 2 µl
 Signal #1 Phase : ZB-MR1 Signal #2 Phase: ZB-MR2
 Signal #1 Info : 30Mx0.32mmx 0.50µ Signal #2 Info : 30M x 0.32mm x 0.25µm

Compound	RT#1	RT#2	Resp#1	Resp#2	ng/ml	ng/ml
System Monitoring Compounds						
1) SA Tetrachlo...	4.737	4.004	2524030	2153507	44.451	46.845
2) SA Decachlor...	10.564	9.279	1925332	1709243	53.663	52.017
Target Compounds						
3) L1 AR-1016-1	6.062f	5.252	27150	14786	17.635	11.614 #
4) L1 AR-1016-2	6.062	5.273	27150	22061	11.419	11.695
6) L1 AR-1016-4	0.000	5.515	0	16995	N.D.	21.592 #
9) L2 AR-1221-2	5.083	4.356	33402	26581	77.238	76.300
12) L3 AR-1232-2	0.000	5.273	0	22061	N.D.	26.790 #
13) L3 AR-1232-3	6.062	0.000	27150	0	26.636	N.D. #
15) L3 AR-1232-5	6.331	0.000	19415	0	59.768	N.D. #
16) L4 AR-1242-1	6.062f	5.252	27150	14786	21.870	14.671 #
17) L4 AR-1242-2	6.062	5.273	27150	22061	14.626	14.883
20) L4 AR-1242-5	7.009	6.121	109771	116923	119.855	129.021
21) L5 AR-1248-1	6.062f	5.252	27150	14786	30.506	19.741 #
22) L5 AR-1248-2	6.331	5.515	19415	16995	16.082	15.980
24) L5 AR-1248-4	6.970	0.000	92891	0	59.044	N.D. #
25) L5 AR-1248-5	7.009	0.000	109771	0	70.931	N.D. #
26) L6 AR-1254-1	6.945	6.121	118929	116923	70.587	58.336
27) L6 AR-1254-2	7.167	6.280	165697	129982	64.173	76.078
28) L6 AR-1254-3	7.547	6.717f	172594	524342	66.026	192.863 #
29) L6 AR-1254-4	7.838	6.940	284329	27656	161.152	19.388 #
30) L6 AR-1254-5	8.263	7.365	908031	622591	458.656	275.657 #
31) L7 AR-1260-1	7.713	6.834	992714	738478	537.081	408.297
32) L7 AR-1260-2	7.978	7.032	1150322	863846	469.898	417.160
33) L7 AR-1260-3	8.343	7.187	1596824	863357	748.097	399.367 #
34) L7 AR-1260-4	8.572	7.667	1271914	1104117	622.986	645.463
35) L7 AR-1260-5	8.883	7.916	2609586	2103917	587.639	547.663
36) L8 AR-1262-1	8.343	7.365	1596824	622591	515.889	527.002
37) L8 AR-1262-2	8.883	7.916	2609586	2103917	547.433	538.958
38) L8 AR-1262-3	9.176	8.200	1801291	884703	535.487	512.826
39) L8 AR-1262-4	9.264	8.264	1428256	1634997	514.087	522.028
40) L8 AR-1262-5	9.879	8.761	919898	745006	586.868	578.049
41) L9 AR-1268-1	9.176	8.200	1801291	884703	291.349	186.703 #
42) L9 AR-1268-2	9.264	8.264	1428256	1634997	255.357	364.517 #
43) L9 AR-1268-3	9.475	8.468	82578	67124	15.952	16.330
44) L9 AR-1268-4	9.879	8.761	919898	745006	580.126	543.661
45) L9 AR-1268-5	10.261	9.039	336351	302863	25.961	26.855

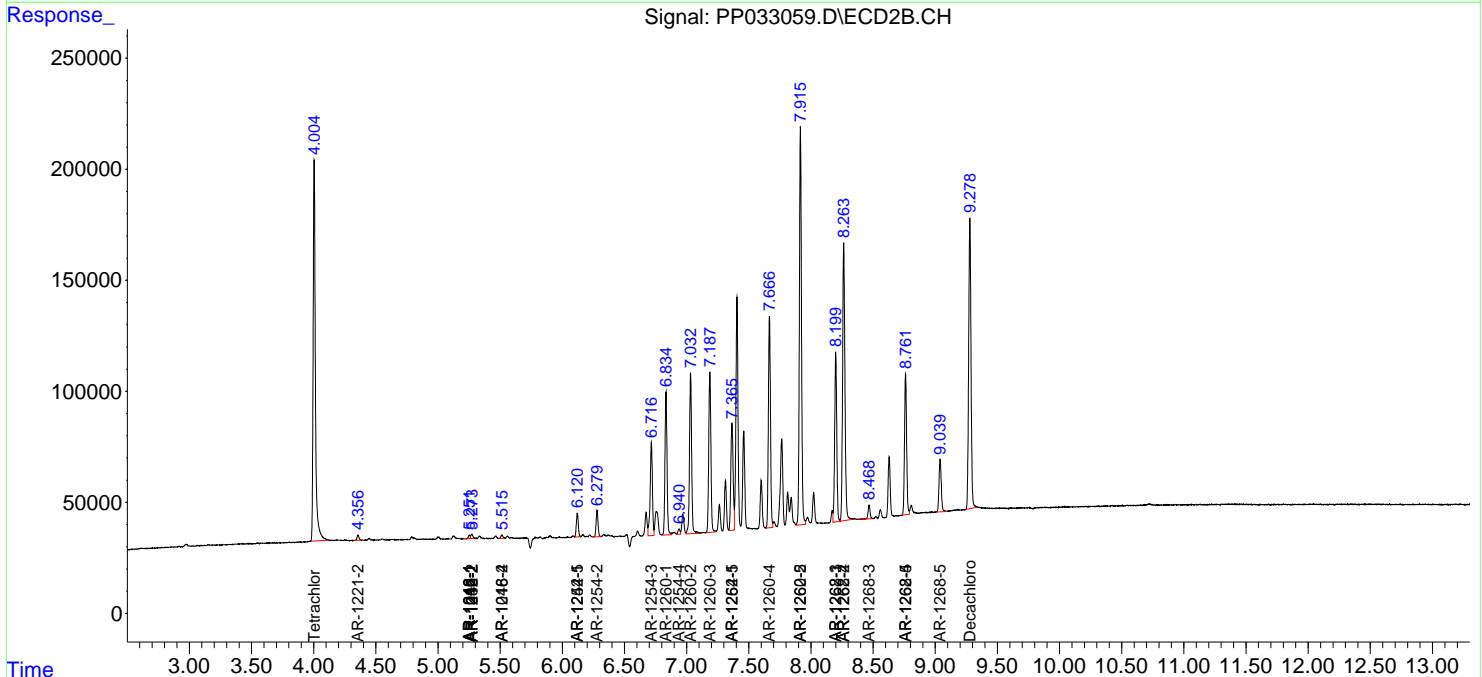
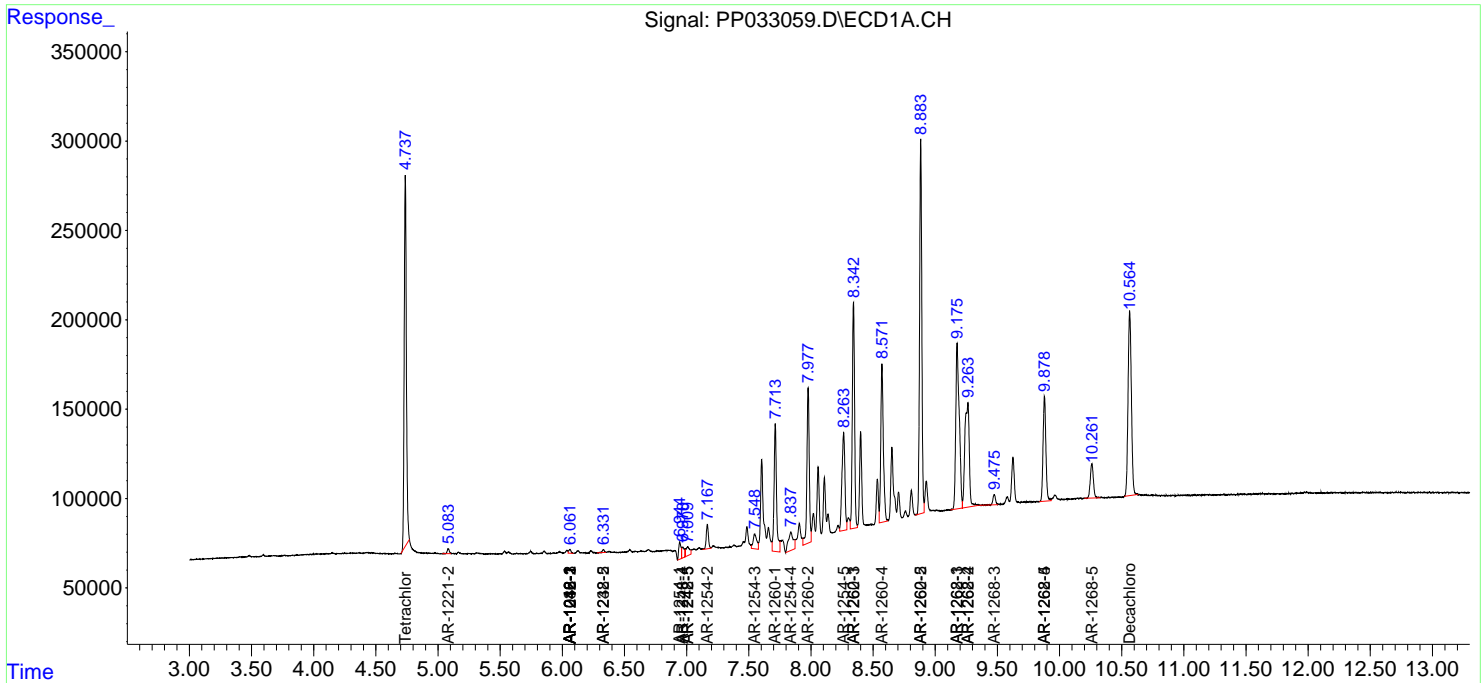
(f)=RT Delta > 1/2 Window (#)=Amounts differ by > 25% (m)=manual int.

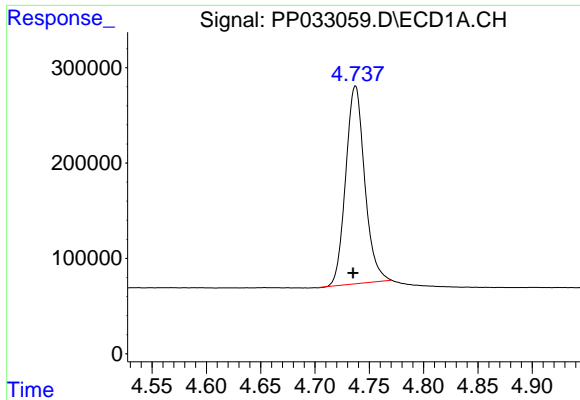
Data Path : Z:\pestpcbsrv\HPCHEM1\ECD_P\Data\PP012921\
 Data File : PP033059.D
 Signal(s) : Signal #1: ECD1A.CH Signal #2: ECD2B.CH
 Acq On : 29 Jan 2021 11:09
 Operator : DD\AJ
 Sample : AR1262CCC500
 Misc :
 ALS Vial : 5 Sample Multiplier: 1

Instrument :
 ECD_P
 ClientSampled :

Integration File signal 1: autoint1.e
 Integration File signal 2: autoint2.e
 Quant Time: Jan 30 00:21:27 2021
 Quant Method : Z:\pestpcbsrv\HPCHEM1\ECD_P\methods\PP012821.M
 Quant Title : GC EXTRACTABLES
 QLast Update : Fri Jan 29 04:07:51 2021
 Response via : Initial Calibration
 Integrator: ChemStation 6890 Scale Mode: Small noise peaks clipped

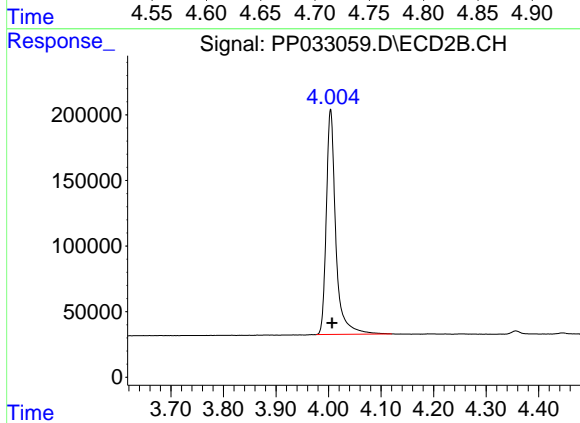
Volume Inj. : 2 µl
 Signal #1 Phase : ZB-MR1 Signal #2 Phase: ZB-MR2
 Signal #1 Info : 30Mx0.32mmx 0.50µ Signal #2 Info : 30M x 0.32mm x 0.25µm



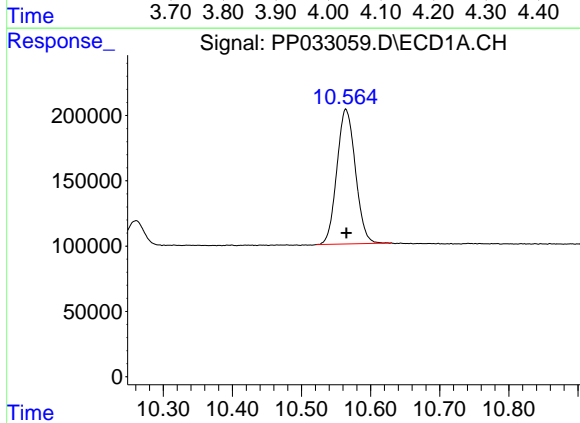


#1 Tetrachloro-m-xylene
R.T.: 4.737 min
Delta R.T.: 0.002 min
Response: 2524030
Conc: 44.45 ng/ml

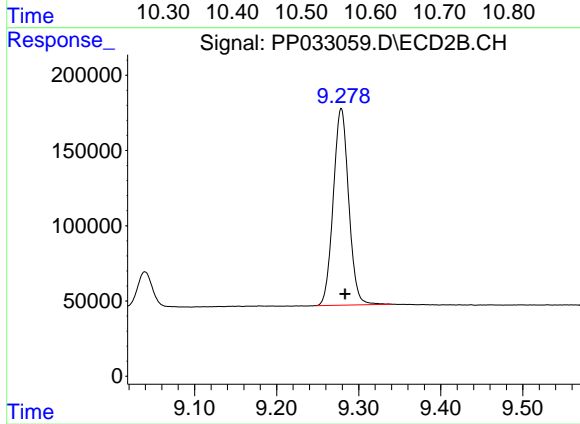
Instrument :
ECD_P
ClientSampleId :



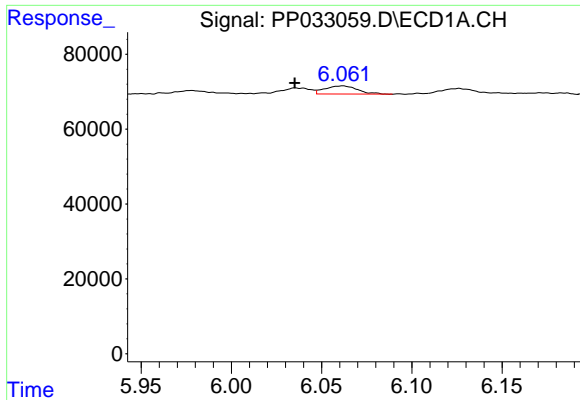
#1 Tetrachloro-m-xylene
R.T.: 4.004 min
Delta R.T.: -0.003 min
Response: 2153507
Conc: 46.85 ng/ml



#2 Decachlorobiphenyl
R.T.: 10.564 min
Delta R.T.: -0.001 min
Response: 1925332
Conc: 53.66 ng/ml



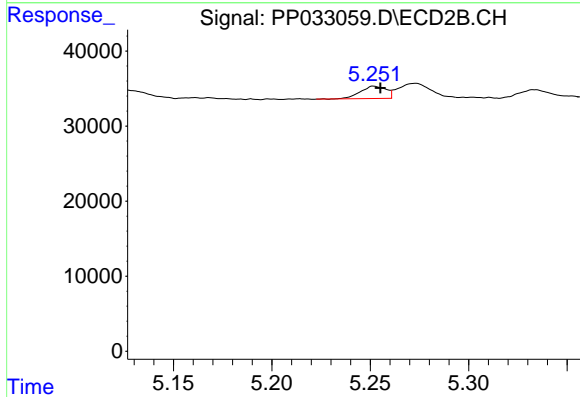
#2 Decachlorobiphenyl
R.T.: 9.279 min
Delta R.T.: -0.005 min
Response: 1709243
Conc: 52.02 ng/ml



#3 AR-1016-1

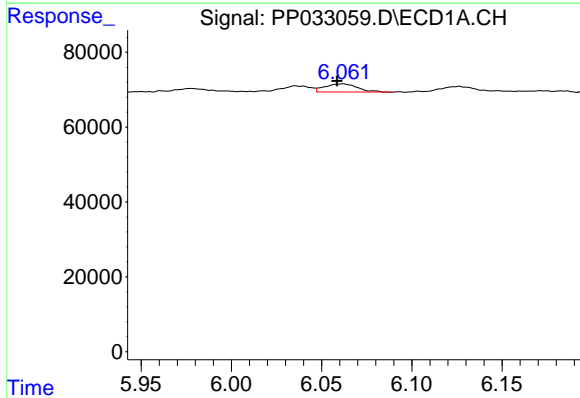
R.T.: 6.062 min
 Delta R.T.: 0.026 min
 Response: 27150
 Conc: 17.63 ng/ml

Instrument :
 ECD_P
 ClientSampleId :



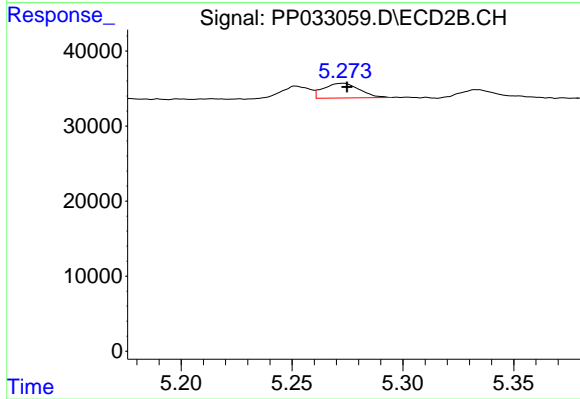
#3 AR-1016-1

R.T.: 5.252 min
 Delta R.T.: -0.003 min
 Response: 14786
 Conc: 11.61 ng/ml



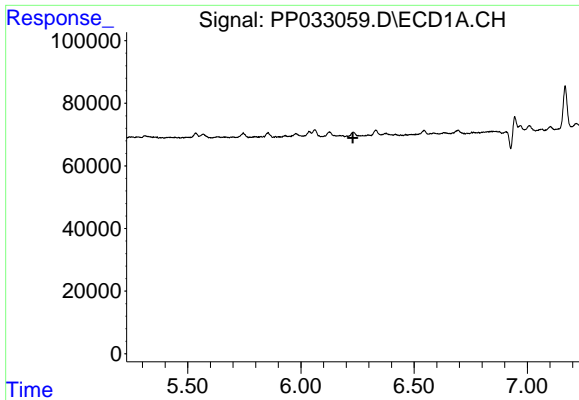
#4 AR-1016-2

R.T.: 6.062 min
 Delta R.T.: 0.003 min
 Response: 27150
 Conc: 11.42 ng/ml



#4 AR-1016-2

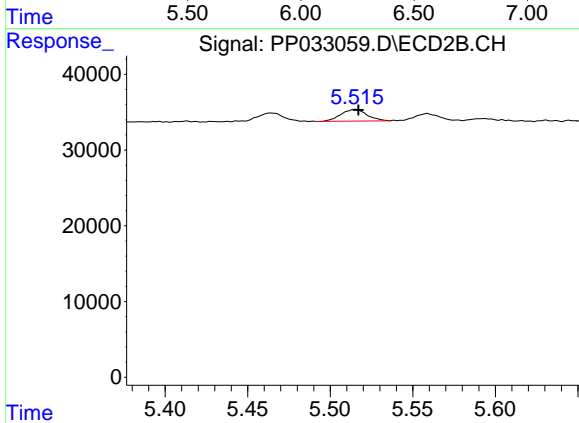
R.T.: 5.273 min
 Delta R.T.: -0.002 min
 Response: 22061
 Conc: 11.70 ng/ml



#6 AR-1016-4

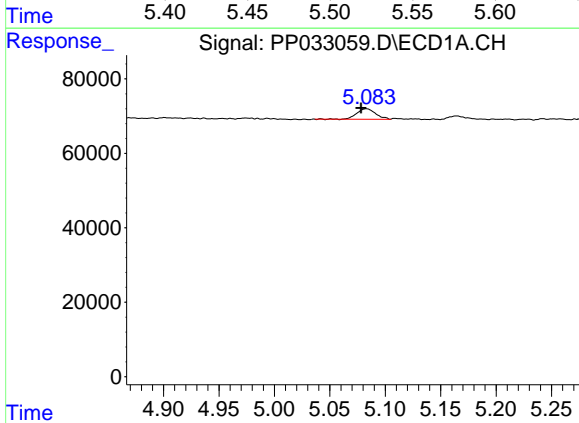
R.T.: 0.000 min
 Exp R.T.: 6.229 min
 Response: 0
 Conc: N.D.

Instrument :
 ECD_P
 ClientSampled :



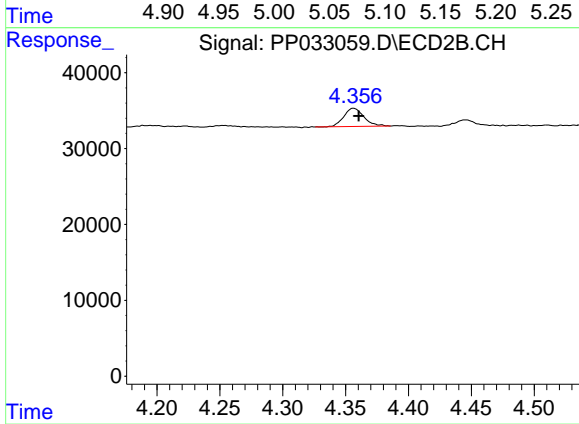
#6 AR-1016-4

R.T.: 5.515 min
 Delta R.T.: -0.002 min
 Response: 16995
 Conc: 21.59 ng/ml



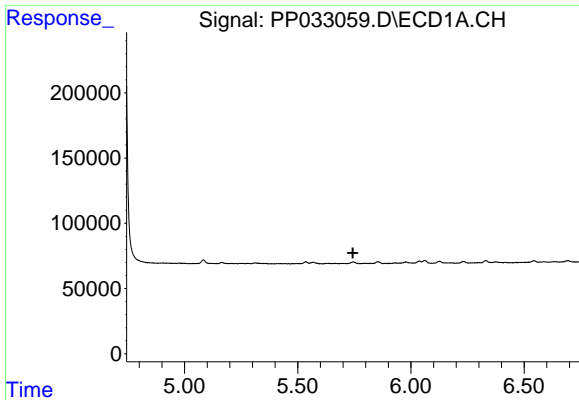
#9 AR-1221-2

R.T.: 5.083 min
 Delta R.T.: 0.005 min
 Response: 33402
 Conc: 77.24 ng/ml



#9 AR-1221-2

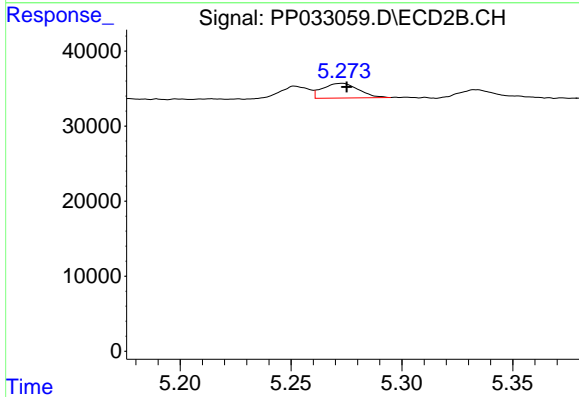
R.T.: 4.356 min
 Delta R.T.: -0.004 min
 Response: 26581
 Conc: 76.30 ng/ml



#12 AR-1232-2

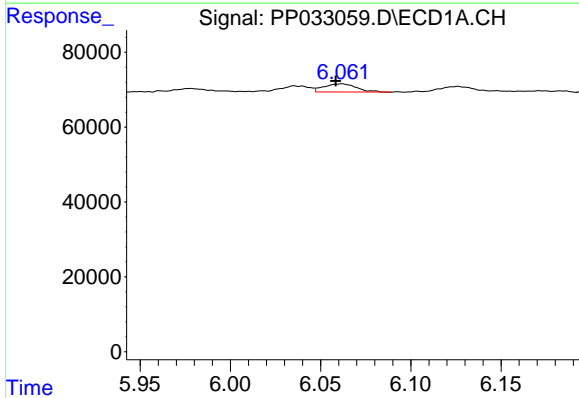
R.T.: 0.000 min
 Exp R.T.: 5.744 min
 Response: 0
 Conc: N.D.

Instrument :
 ECD_P
 ClientSampled :



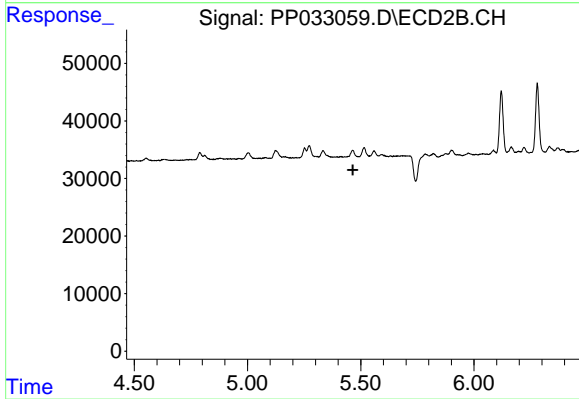
#12 AR-1232-2

R.T.: 5.273 min
 Delta R.T.: -0.002 min
 Response: 22061
 Conc: 26.79 ng/ml



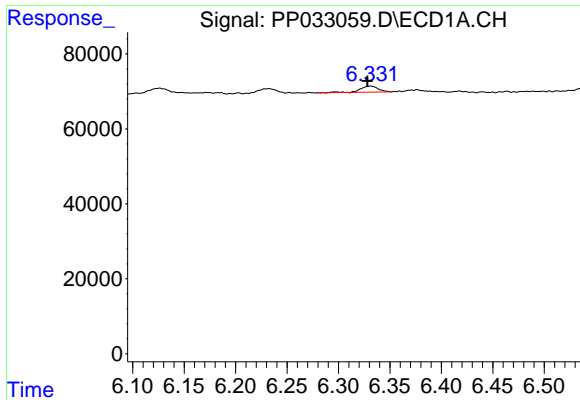
#13 AR-1232-3

R.T.: 6.062 min
 Delta R.T.: 0.003 min
 Response: 27150
 Conc: 26.64 ng/ml



#13 AR-1232-3

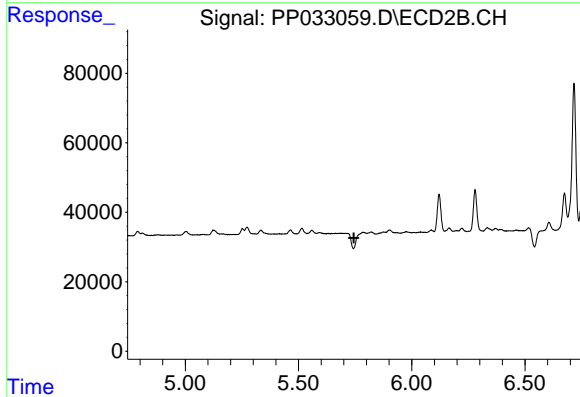
R.T.: 0.000 min
 Exp R.T.: 5.466 min
 Response: 0
 Conc: N.D.



#15 AR-1232-5

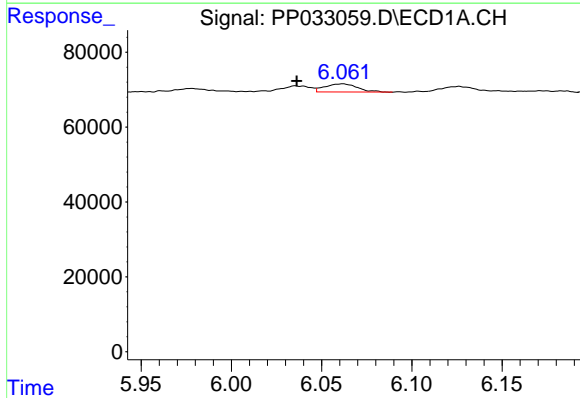
R.T.: 6.331 min
 Delta R.T.: 0.003 min
 Response: 19415
 Conc: 59.77 ng/ml

Instrument :
 ECD_P
 ClientSampled :



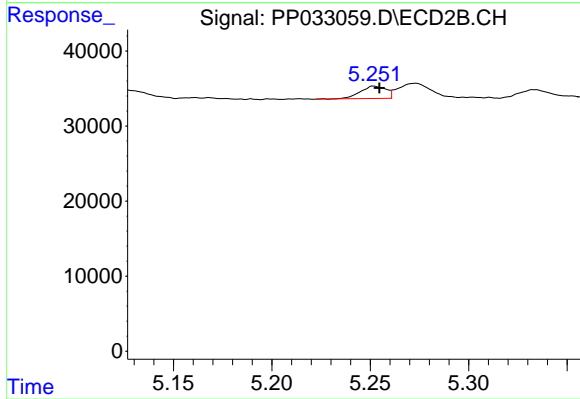
#15 AR-1232-5

R.T.: 0.000 min
 Exp R.T. : 5.745 min
 Response: 0
 Conc: N.D.



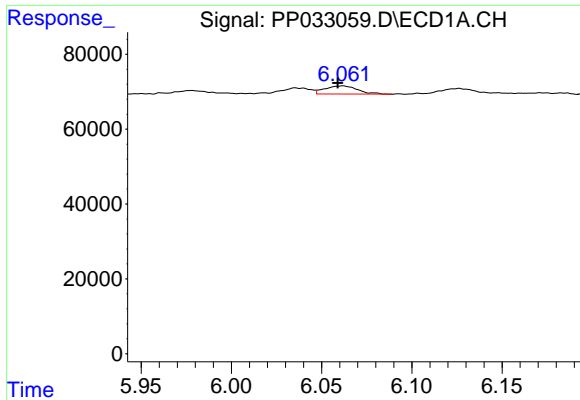
#16 AR-1242-1

R.T.: 6.062 min
 Delta R.T.: 0.026 min
 Response: 27150
 Conc: 21.87 ng/ml



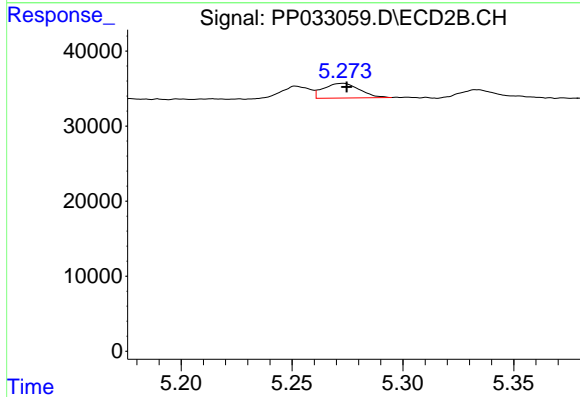
#16 AR-1242-1

R.T.: 5.252 min
 Delta R.T.: -0.003 min
 Response: 14786
 Conc: 14.67 ng/ml

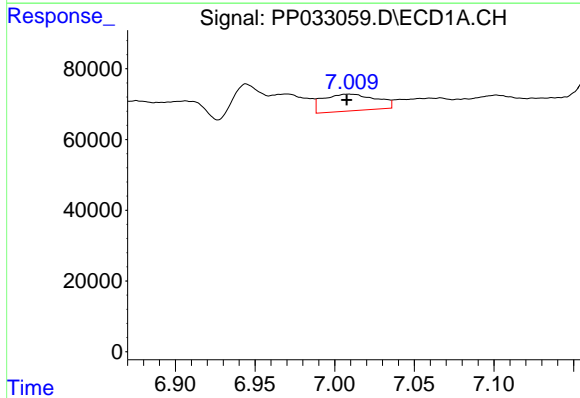


#17 AR-1242-2
 R.T.: 6.062 min
 Delta R.T.: 0.003 min
 Response: 27150
 Conc: 14.63 ng/ml

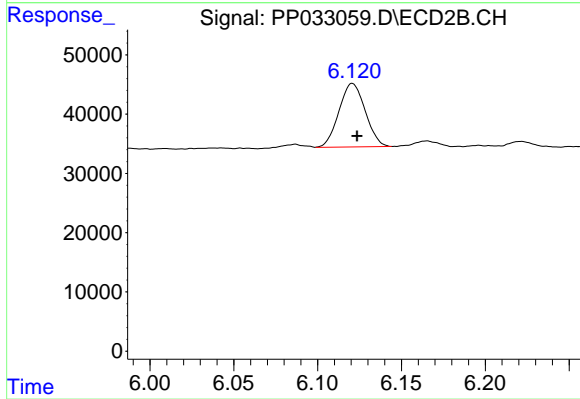
Instrument :
 ECD_P
 ClientSampleId :



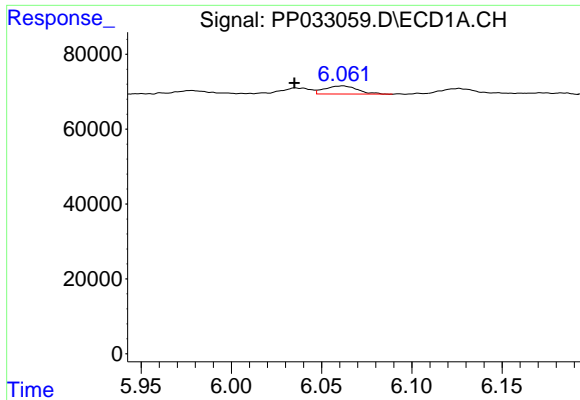
#17 AR-1242-2
 R.T.: 5.273 min
 Delta R.T.: -0.002 min
 Response: 22061
 Conc: 14.88 ng/ml



#20 AR-1242-5
 R.T.: 7.009 min
 Delta R.T.: 0.001 min
 Response: 109771
 Conc: 119.85 ng/ml



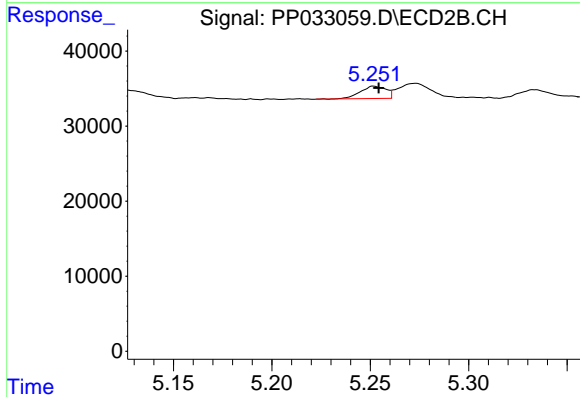
#20 AR-1242-5
 R.T.: 6.121 min
 Delta R.T.: -0.003 min
 Response: 116923
 Conc: 129.02 ng/ml



#21 AR-1248-1

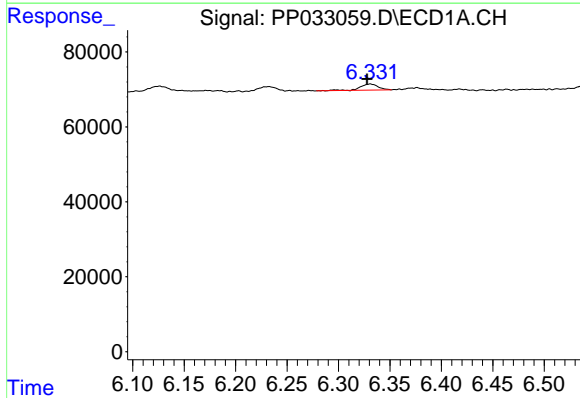
R.T.: 6.062 min
 Delta R.T.: 0.027 min
 Response: 27150
 Conc: 30.51 ng/ml

Instrument :
 ECD_P
 ClientSampleId :



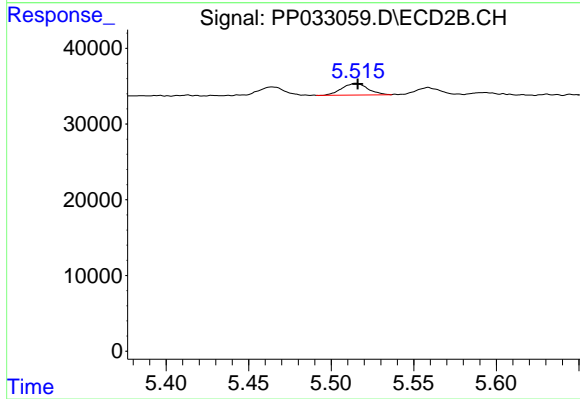
#21 AR-1248-1

R.T.: 5.252 min
 Delta R.T.: -0.002 min
 Response: 14786
 Conc: 19.74 ng/ml



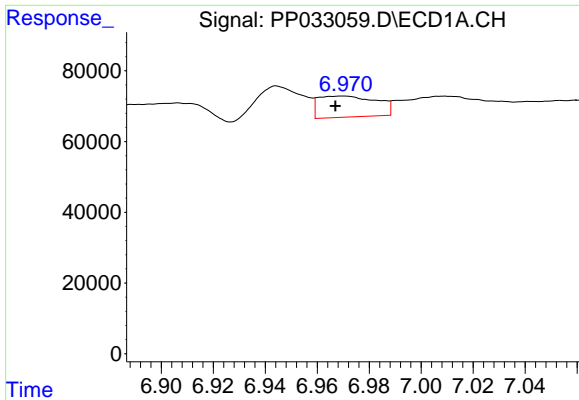
#22 AR-1248-2

R.T.: 6.331 min
 Delta R.T.: 0.003 min
 Response: 19415
 Conc: 16.08 ng/ml



#22 AR-1248-2

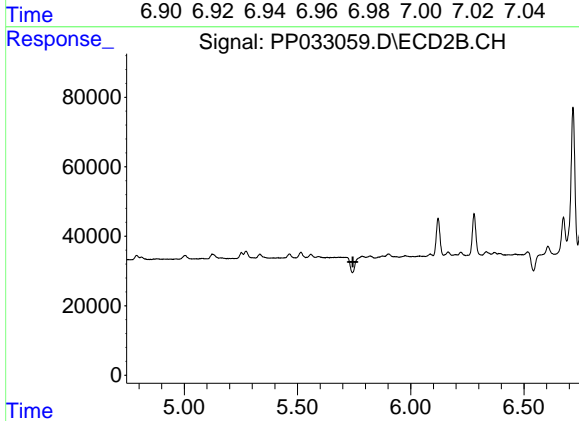
R.T.: 5.515 min
 Delta R.T.: 0.000 min
 Response: 16995
 Conc: 15.98 ng/ml



#24 AR-1248-4

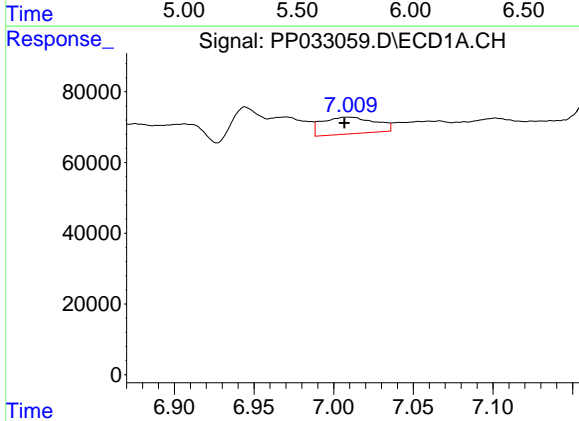
R.T.: 6.970 min
 Delta R.T.: 0.003 min
 Response: 92891
 Conc: 59.04 ng/ml

Instrument :
 ECD_P
 ClientSampled :



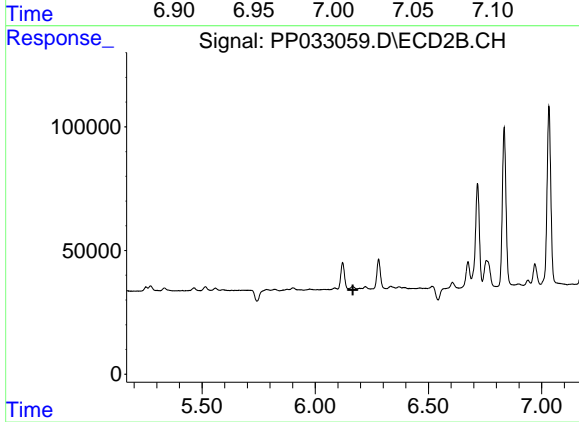
#24 AR-1248-4

R.T.: 0.000 min
 Exp R.T. : 5.744 min
 Response: 0
 Conc: N.D.



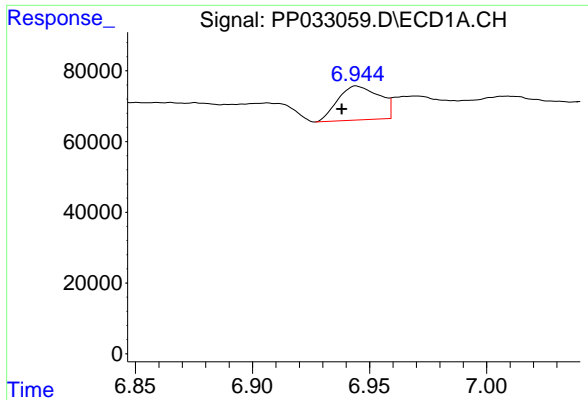
#25 AR-1248-5

R.T.: 7.009 min
 Delta R.T.: 0.002 min
 Response: 109771
 Conc: 70.93 ng/ml



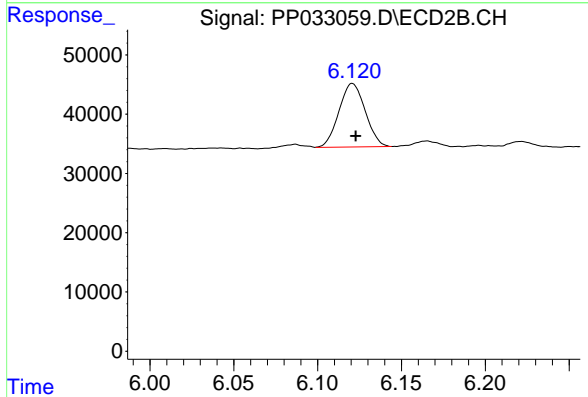
#25 AR-1248-5

R.T.: 0.000 min
 Exp R.T. : 6.166 min
 Response: 0
 Conc: N.D.

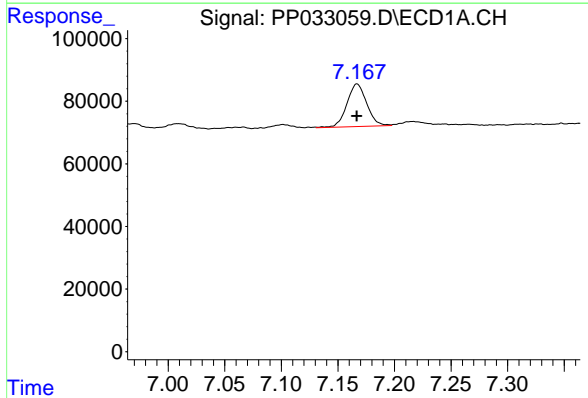


#26 AR-1254-1
 R.T.: 6.945 min
 Delta R.T.: 0.006 min
 Response: 118929
 Conc: 70.59 ng/ml

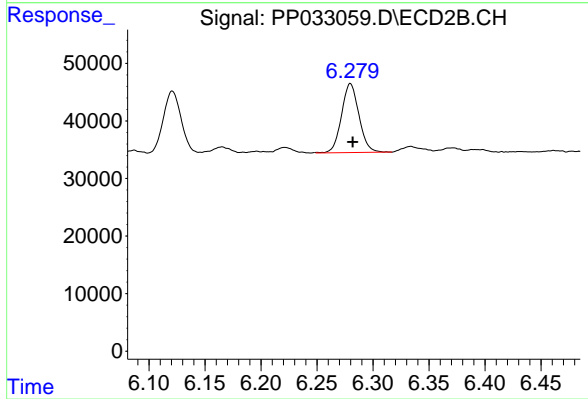
Instrument :
 ECD_P
 ClientSampleId :



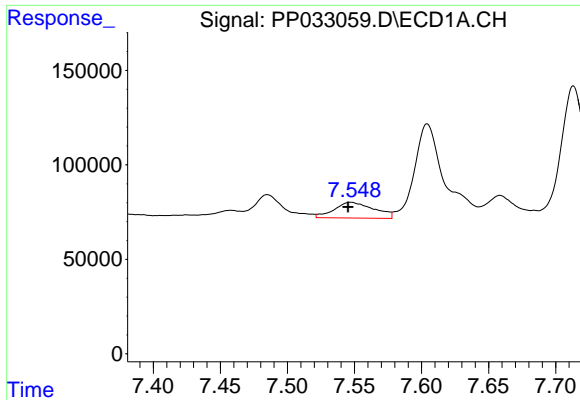
#26 AR-1254-1
 R.T.: 6.121 min
 Delta R.T.: -0.002 min
 Response: 116923
 Conc: 58.34 ng/ml



#27 AR-1254-2
 R.T.: 7.167 min
 Delta R.T.: 0.000 min
 Response: 165697
 Conc: 64.17 ng/ml

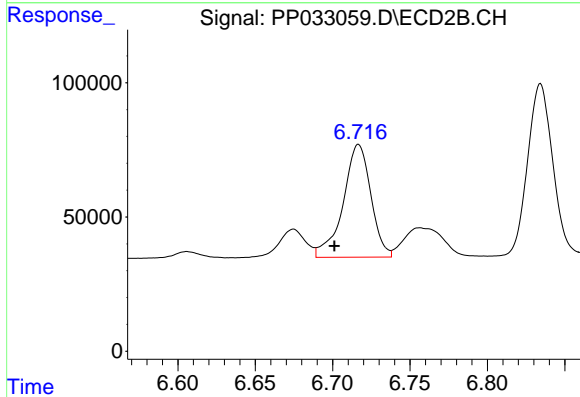


#27 AR-1254-2
 R.T.: 6.280 min
 Delta R.T.: -0.002 min
 Response: 129982
 Conc: 76.08 ng/ml

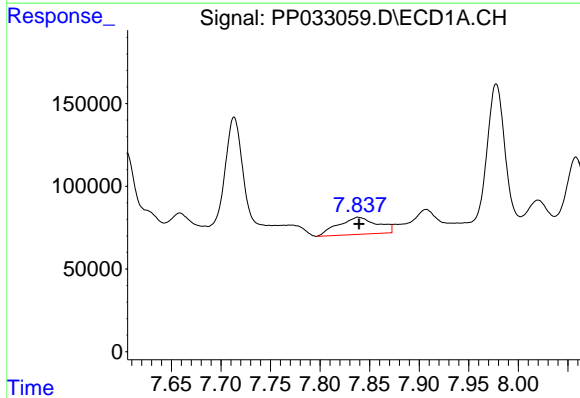


#28 AR-1254-3
 R.T.: 7.547 min
 Delta R.T.: 0.002 min
 Response: 172594
 Conc: 66.03 ng/ml

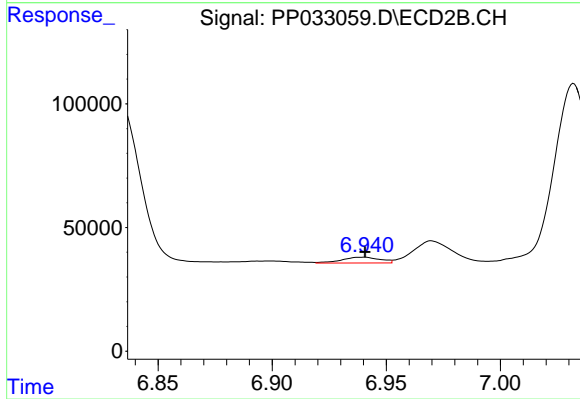
Instrument :
 ECD_P
 ClientSampleId :



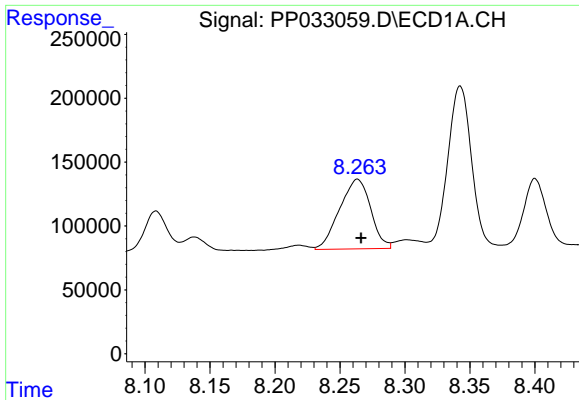
#28 AR-1254-3
 R.T.: 6.717 min
 Delta R.T.: 0.016 min
 Response: 524342
 Conc: 192.86 ng/ml



#29 AR-1254-4
 R.T.: 7.838 min
 Delta R.T.: 0.000 min
 Response: 284329
 Conc: 161.15 ng/ml

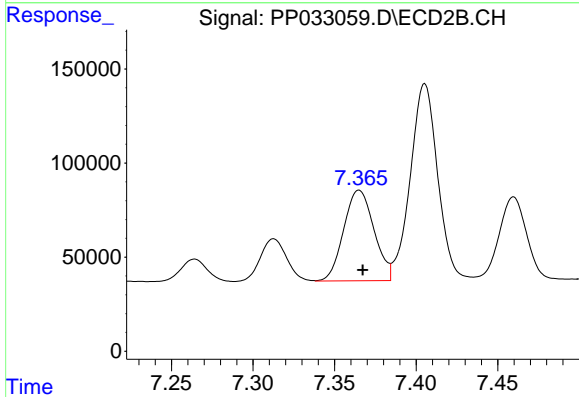


#29 AR-1254-4
 R.T.: 6.940 min
 Delta R.T.: 0.000 min
 Response: 27656
 Conc: 19.39 ng/ml

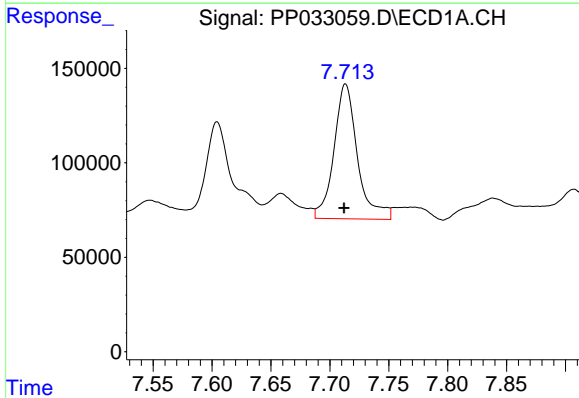


#30 AR-1254-5
 R.T.: 8.263 min
 Delta R.T.: -0.003 min
 Response: 908031
 Conc: 458.66 ng/ml

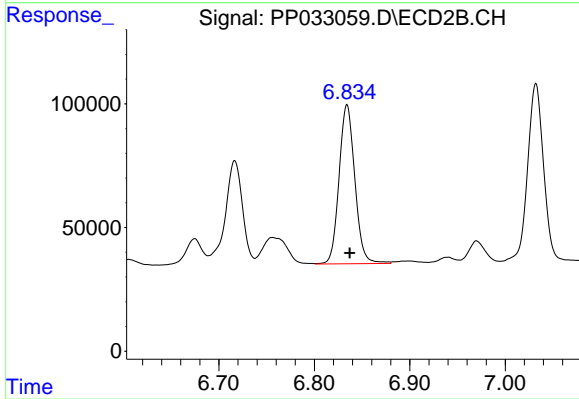
Instrument :
 ECD_P
 ClientSampleId :



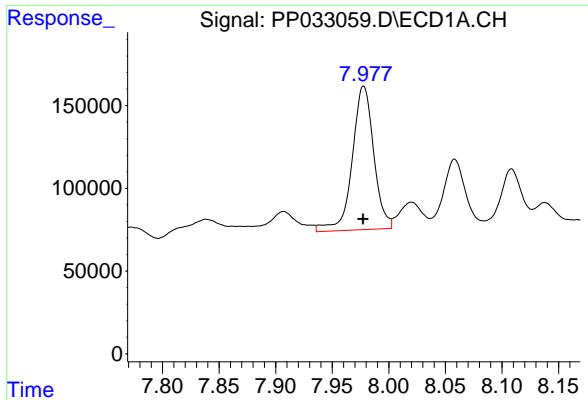
#30 AR-1254-5
 R.T.: 7.365 min
 Delta R.T.: -0.002 min
 Response: 622591
 Conc: 275.66 ng/ml



#31 AR-1260-1
 R.T.: 7.713 min
 Delta R.T.: 0.001 min
 Response: 992714
 Conc: 537.08 ng/ml



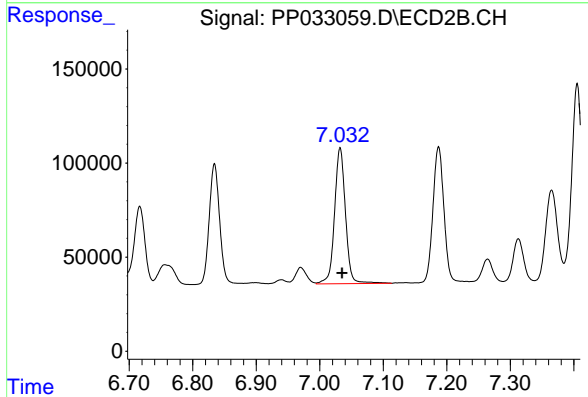
#31 AR-1260-1
 R.T.: 6.834 min
 Delta R.T.: -0.003 min
 Response: 738478
 Conc: 408.30 ng/ml



#32 AR-1260-2

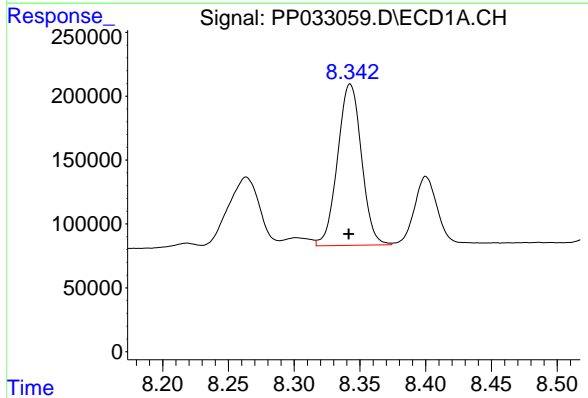
R.T.: 7.978 min
 Delta R.T.: 0.000 min
 Response: 1150322
 Conc: 469.90 ng/ml

Instrument :
 ECD_P
 ClientSampleId :



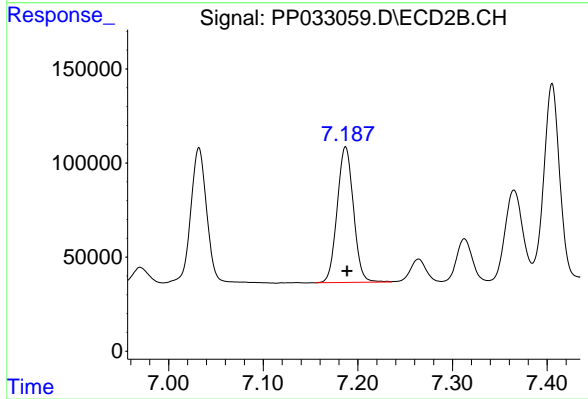
#32 AR-1260-2

R.T.: 7.032 min
 Delta R.T.: -0.003 min
 Response: 863846
 Conc: 417.16 ng/ml



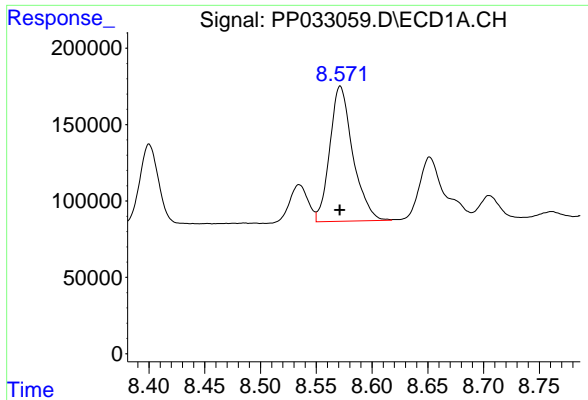
#33 AR-1260-3

R.T.: 8.343 min
 Delta R.T.: 0.001 min
 Response: 1596824
 Conc: 748.10 ng/ml



#33 AR-1260-3

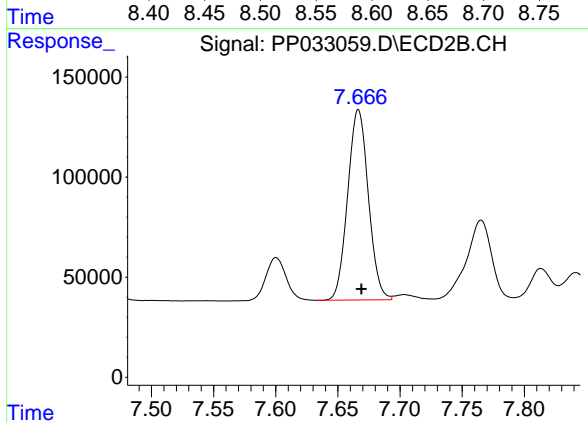
R.T.: 7.187 min
 Delta R.T.: -0.002 min
 Response: 863357
 Conc: 399.37 ng/ml



#34 AR-1260-4

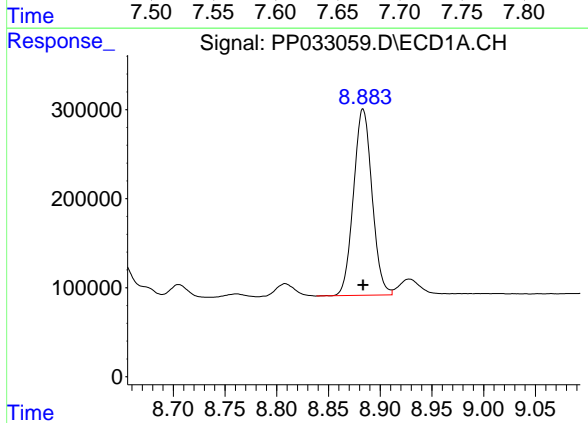
R.T.: 8.572 min
 Delta R.T.: 0.000 min
 Response: 1271914
 Conc: 622.99 ng/ml

Instrument :
 ECD_P
 ClientSampled :



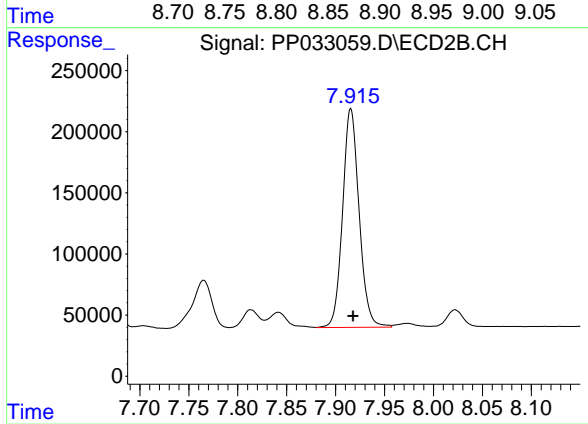
#34 AR-1260-4

R.T.: 7.667 min
 Delta R.T.: -0.002 min
 Response: 1104117
 Conc: 645.46 ng/ml



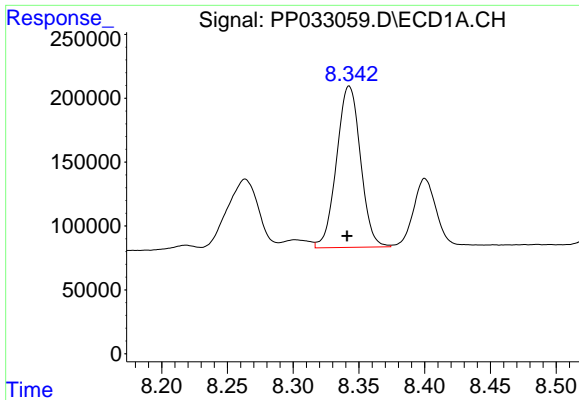
#35 AR-1260-5

R.T.: 8.883 min
 Delta R.T.: 0.000 min
 Response: 2609586
 Conc: 587.64 ng/ml



#35 AR-1260-5

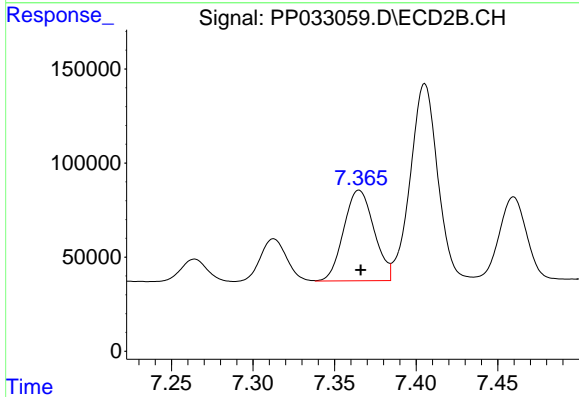
R.T.: 7.916 min
 Delta R.T.: -0.002 min
 Response: 2103917
 Conc: 547.66 ng/ml



#36 AR-1262-1

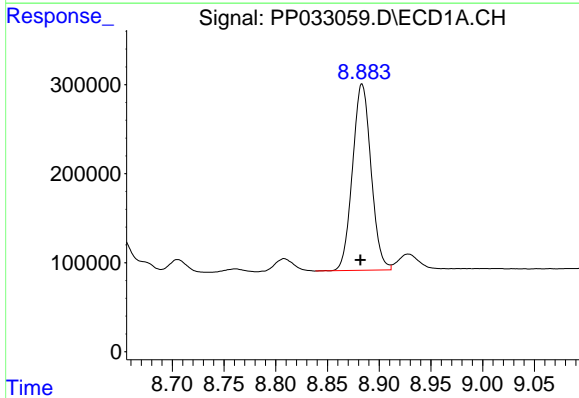
R.T.: 8.343 min
 Delta R.T.: 0.002 min
 Response: 1596824
 Conc: 515.89 ng/ml

Instrument :
 ECD_P
 ClientSampleId :



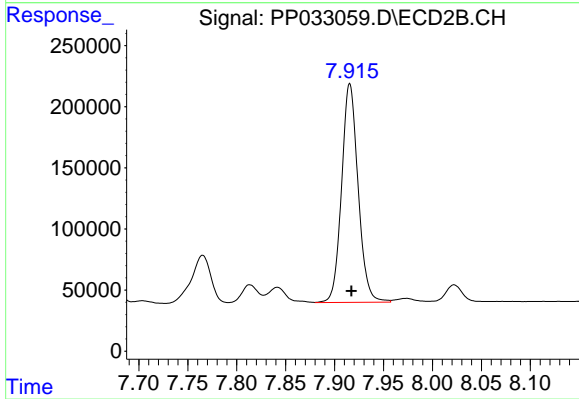
#36 AR-1262-1

R.T.: 7.365 min
 Delta R.T.: -0.001 min
 Response: 622591
 Conc: 527.00 ng/ml



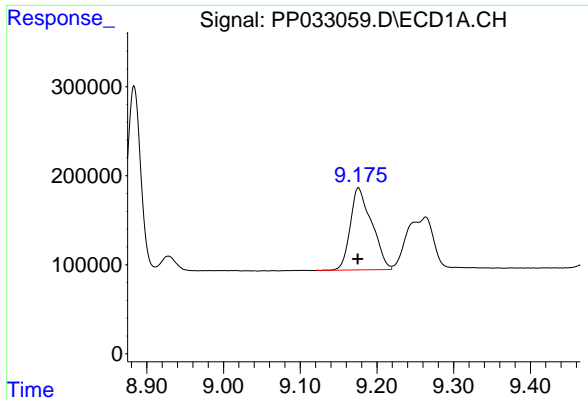
#37 AR-1262-2

R.T.: 8.883 min
 Delta R.T.: 0.002 min
 Response: 2609586
 Conc: 547.43 ng/ml



#37 AR-1262-2

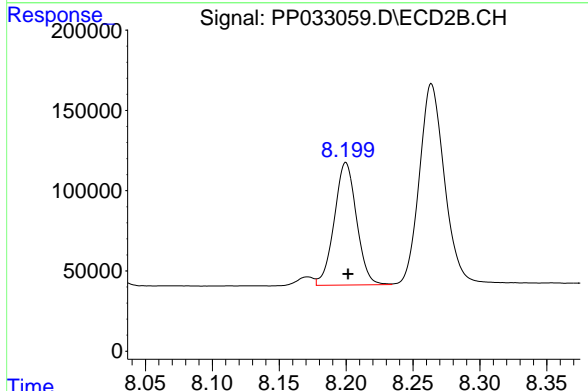
R.T.: 7.916 min
 Delta R.T.: -0.002 min
 Response: 2103917
 Conc: 538.96 ng/ml



#38 AR-1262-3

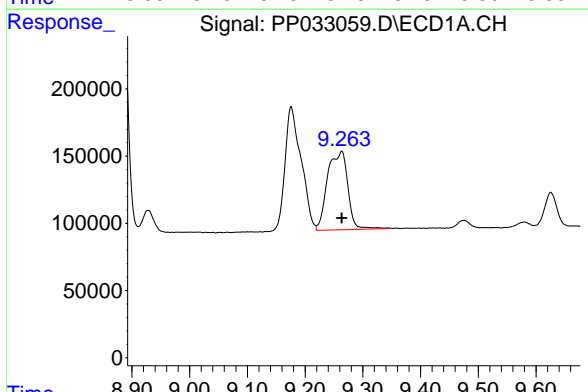
R.T.: 9.176 min
 Delta R.T.: 0.000 min
 Response: 1801291
 Conc: 535.49 ng/ml

Instrument :
 ECD_P
 ClientSampled :



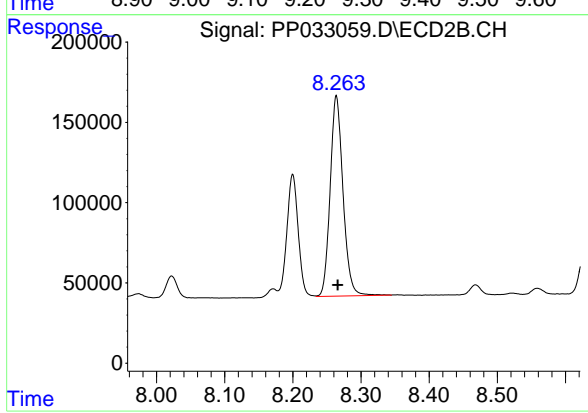
#38 AR-1262-3

R.T.: 8.200 min
 Delta R.T.: -0.002 min
 Response: 884703
 Conc: 512.83 ng/ml



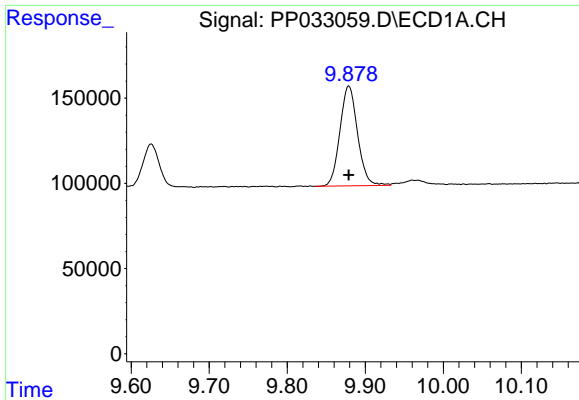
#39 AR-1262-4

R.T.: 9.264 min
 Delta R.T.: 0.000 min
 Response: 1428256
 Conc: 514.09 ng/ml



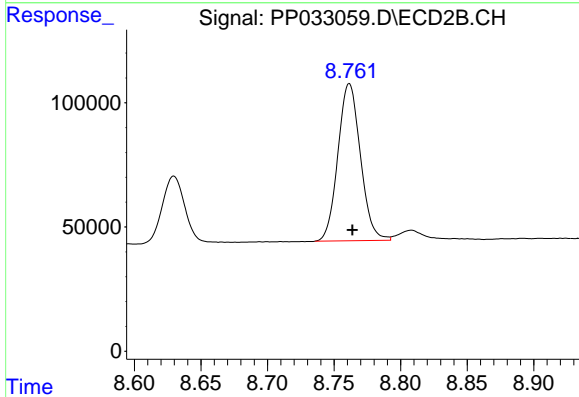
#39 AR-1262-4

R.T.: 8.264 min
 Delta R.T.: -0.002 min
 Response: 1634997
 Conc: 522.03 ng/ml

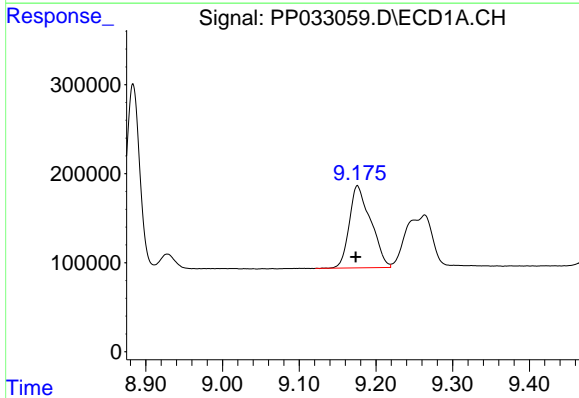


#40 AR-1262-5
 R.T.: 9.879 min
 Delta R.T.: 0.000 min
 Response: 919898
 Conc: 586.87 ng/ml

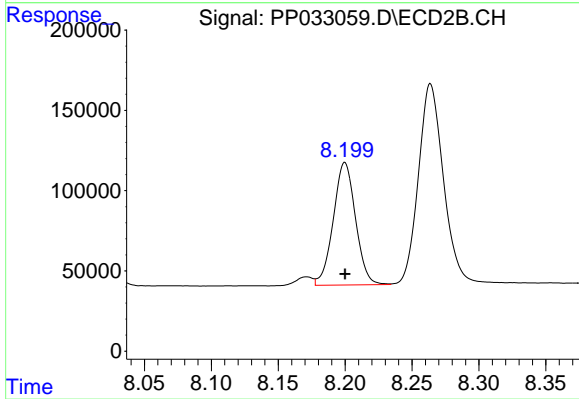
Instrument :
 ECD_P
 ClientSampleId :



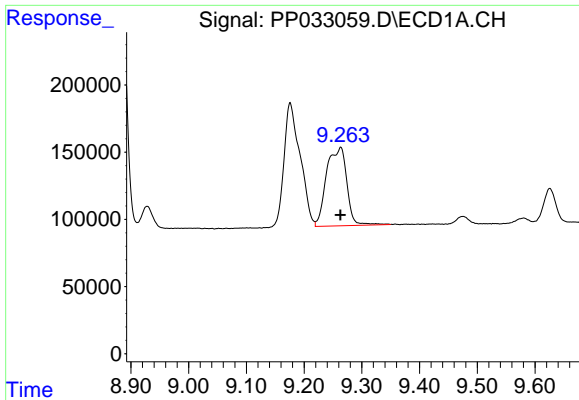
#40 AR-1262-5
 R.T.: 8.761 min
 Delta R.T.: -0.002 min
 Response: 745006
 Conc: 578.05 ng/ml



#41 AR-1268-1
 R.T.: 9.176 min
 Delta R.T.: 0.002 min
 Response: 1801291
 Conc: 291.35 ng/ml



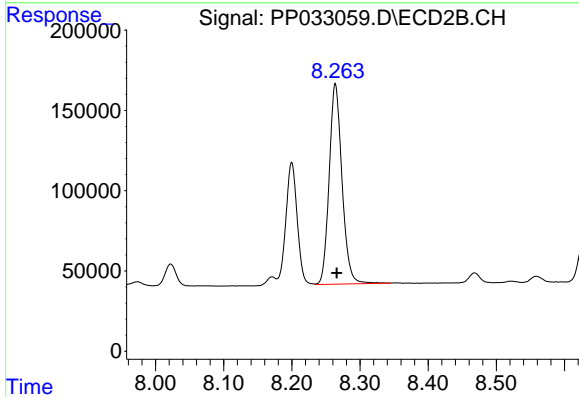
#41 AR-1268-1
 R.T.: 8.200 min
 Delta R.T.: 0.000 min
 Response: 884703
 Conc: 186.70 ng/ml



#42 AR-1268-2

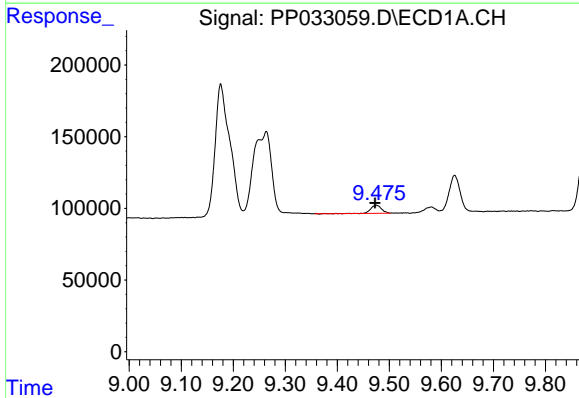
R.T.: 9.264 min
 Delta R.T.: 0.000 min
 Response: 1428256
 Conc: 255.36 ng/ml

Instrument :
 ECD_P
 ClientSampled :



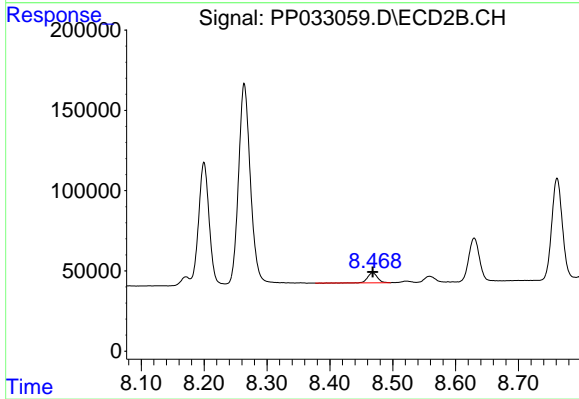
#42 AR-1268-2

R.T.: 8.264 min
 Delta R.T.: -0.002 min
 Response: 1634997
 Conc: 364.52 ng/ml



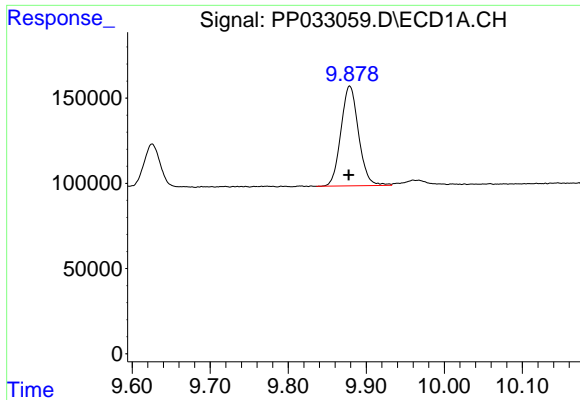
#43 AR-1268-3

R.T.: 9.475 min
 Delta R.T.: 0.003 min
 Response: 82578
 Conc: 15.95 ng/ml



#43 AR-1268-3

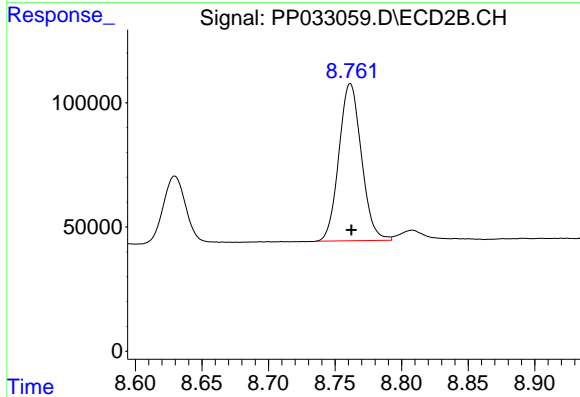
R.T.: 8.468 min
 Delta R.T.: 0.000 min
 Response: 67124
 Conc: 16.33 ng/ml



#44 AR-1268-4

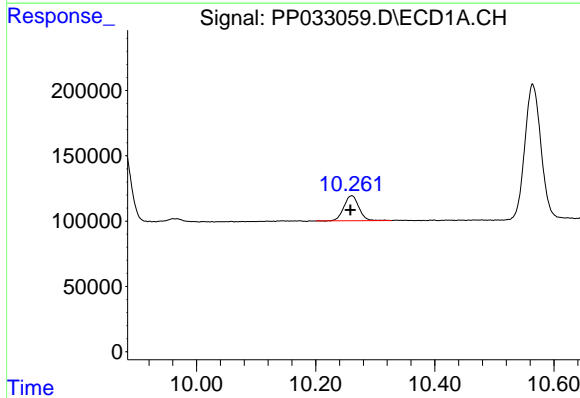
R.T.: 9.879 min
 Delta R.T.: 0.001 min
 Response: 919898
 Conc: 580.13 ng/ml

Instrument :
 ECD_P
 ClientSampleId :



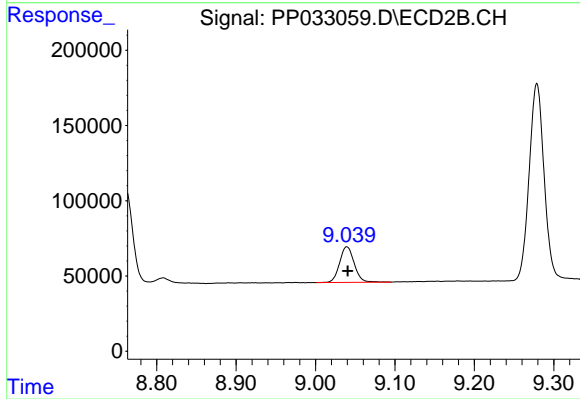
#44 AR-1268-4

R.T.: 8.761 min
 Delta R.T.: 0.000 min
 Response: 745006
 Conc: 543.66 ng/ml



#45 AR-1268-5

R.T.: 10.261 min
 Delta R.T.: 0.002 min
 Response: 336351
 Conc: 25.96 ng/ml



#45 AR-1268-5

R.T.: 9.039 min
 Delta R.T.: -0.001 min
 Response: 302863
 Conc: 26.85 ng/ml