

Data Path : Z:\pestpcbsrv\HPCHEM1\ECD_P\Data\PP012921\
 Data File : PP033079.D
 Signal(s) : Signal #1: ECD1A.CH Signal #2: ECD2B.CH
 Acq On : 29 Jan 2021 17:18
 Operator : DD\AJ
 Sample : M1279-04
 Misc :
 ALS Vial : 20 Sample Multiplier: 1

Instrument :
 ECD_P
 ClientSampleId :
 S17-04-D

Integration File signal 1: autoint1.e
 Integration File signal 2: autoint2.e
 Quant Time: Jan 30 00:26:47 2021
 Quant Method : Z:\pestpcbsrv\HPCHEM1\ECD_P\methods\PP012821.M
 Quant Title : GC EXTRACTABLES
 QLast Update : Fri Jan 29 04:07:51 2021
 Response via : Initial Calibration
 Integrator: ChemStation 6890 Scale Mode: Small noise peaks clipped

Volume Inj. : 2 µl
 Signal #1 Phase : ZB-MR2 Signal #2 Phase: ZB-MR2
 Signal #1 Info : 30Mx0.32mmx 0.50µ Signal #2 Info : 30M x 0.32mm x 0.25µm

Compound	RT#1	RT#2	Resp#1	Resp#2	ng/ml	ng/ml
System Monitoring Compounds						
1) SA Tetrachlo...	4.731	4.003	1134016	957645	19.971	20.832
2) SA Decachlor...	10.558	9.275	747170	659811	20.825	20.080
Target Compounds						
3) L1 AR-1016-1	6.040	0.000	20682	0	13.433	N.D. #
4) L1 AR-1016-2	6.040f	0.000	20682	0	8.699	N.D. #
7) L1 AR-1016-5	6.549	0.000	16221	0	14.348	N.D. #
8) L2 AR-1221-1	4.975	0.000	89215	0	159.757	N.D. #
10) L2 AR-1221-3	5.178f	4.446	62442	63472	47.680	57.599
11) L3 AR-1232-1	5.178f	4.446	62442	63472	57.529	71.185
13) L3 AR-1232-3	6.040f	0.000	20682	0	20.290	N.D. #
16) L4 AR-1242-1	6.040	0.000	20682	0	16.660	N.D. #
17) L4 AR-1242-2	6.040f	0.000	20682	0	11.142	N.D. #
20) L4 AR-1242-5	0.000	6.152f	0	33312	N.D.	36.759 #
21) L5 AR-1248-1	6.040	0.000	20682	0	23.239	N.D. #
23) L5 AR-1248-3	6.549	0.000	16221	0	10.782	N.D. #
24) L5 AR-1248-4	6.960	0.000	2028946	0	1289.640	N.D. #
25) L5 AR-1248-5	0.000	6.152	0	33312	N.D.	27.406 #
26) L6 AR-1254-1	6.960f	6.152f	2028946	33312	1204.220	16.620 #
27) L6 AR-1254-2	7.166	6.293	88103	23311	34.121	13.644 #
28) L6 AR-1254-3	7.544	0.000	42941	0	16.427	N.D. #
29) L6 AR-1254-4	7.842	0.000	155218	0	87.974	N.D. #
30) L6 AR-1254-5	8.286f	7.362	1226659	1058380	619.598	468.606
31) L7 AR-1260-1	7.705	6.855f	18185	234235	9.838	129.506 #
32) L7 AR-1260-2	7.965	7.061f	600312	427885	245.223	206.630
33) L7 AR-1260-3	8.334	0.000	9491	0	4.447	N.D. #
34) L7 AR-1260-4	8.563	7.664	77557	18438	37.988	10.779 #
35) L7 AR-1260-5	8.877	0.000	47674	0	10.735	N.D. #
36) L8 AR-1262-1	8.334	7.362	9491	1058380	3.066	895.881 #
37) L8 AR-1262-2	8.877	0.000	47674	0	10.001	N.D. #
38) L8 AR-1262-3	9.171	0.000	43757	0	13.008	N.D. #
39) L8 AR-1262-4	9.258	8.262	62099	45228	22.352	14.441 #
41) L9 AR-1268-1	9.171	0.000	43757	0	7.077	N.D. #
42) L9 AR-1268-2	9.258	8.262	62099	45228	11.103	10.084
43) L9 AR-1268-3	9.471	0.000	65279	0	12.610	N.D. #
45) L9 AR-1268-5	10.254	9.037	32480	29245	2.507	2.593

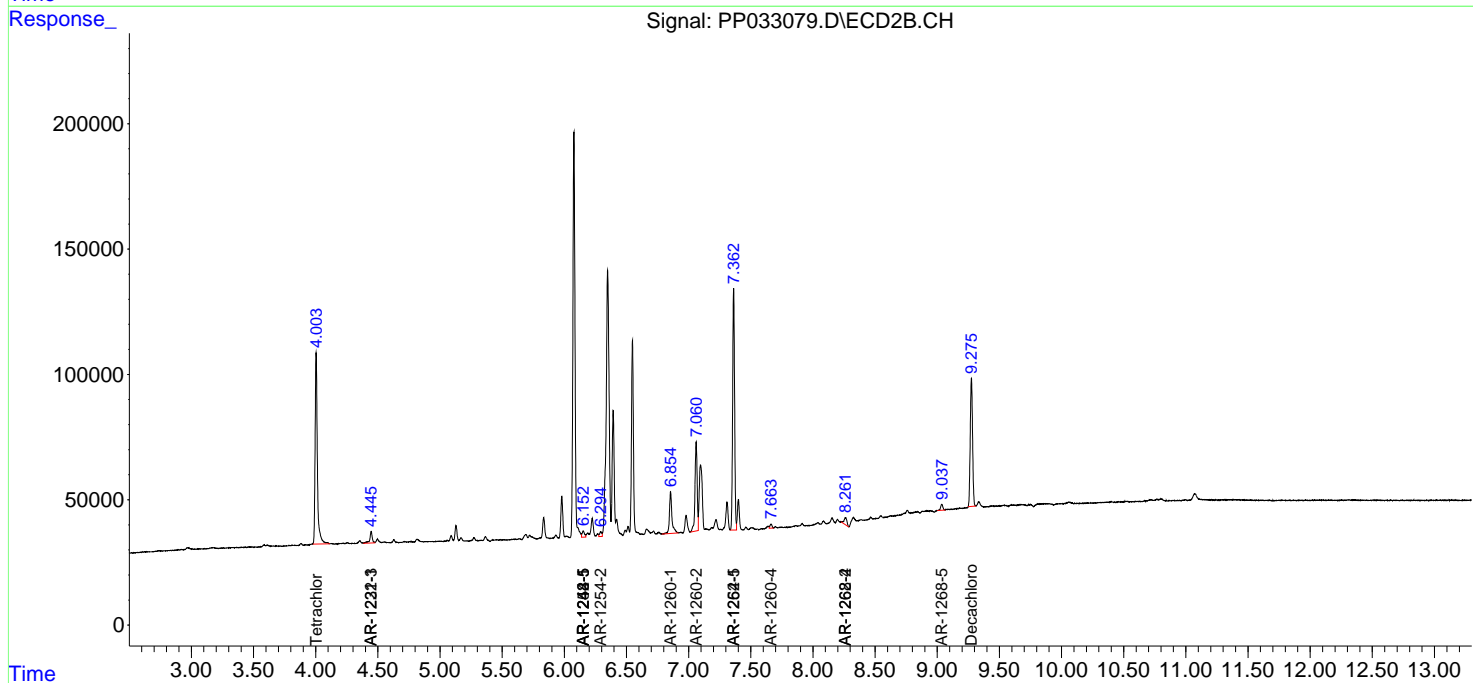
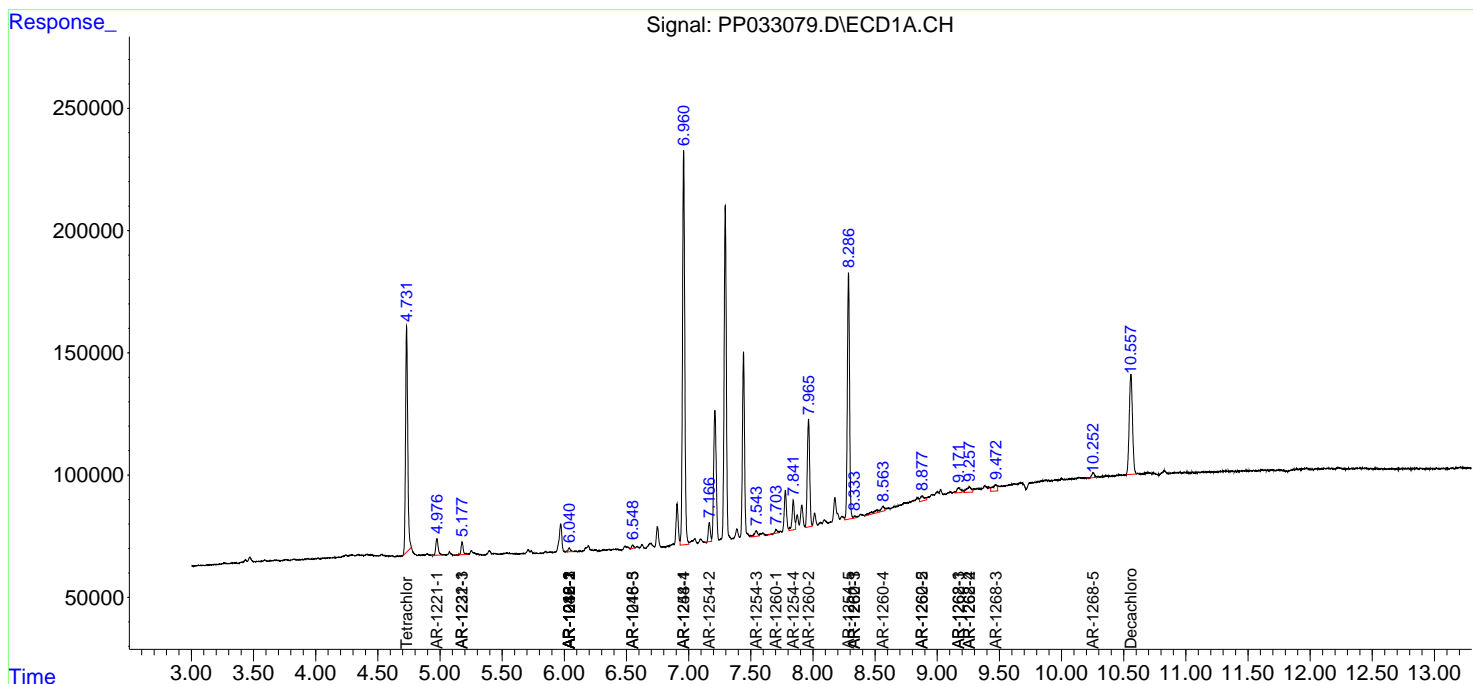
(f)=RT Delta > 1/2 Window (#)=Amounts differ by > 25% (m)=manual int.

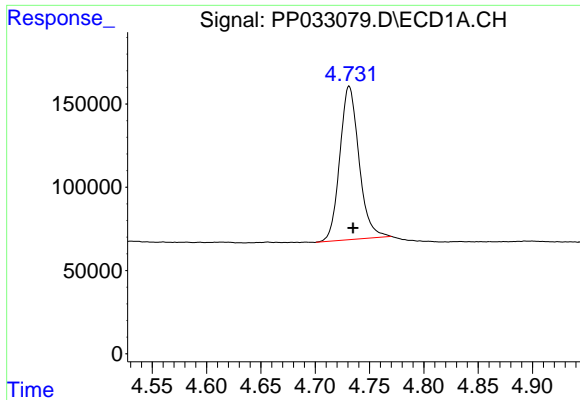
Data Path : Z:\pestpcbsrv\HPCHEM1\ECD_P\Data\PP012921\
 Data File : PP033079.D
 Signal(s) : Signal #1: ECD1A.CH Signal #2: ECD2B.CH
 Acq On : 29 Jan 2021 17:18
 Operator : DD\AJ
 Sample : M1279-04
 Misc :
 ALS Vial : 20 Sample Multiplier: 1

Instrument :
 ECD_P
 ClientSampled :
 S17-04-D

Integration File signal 1: autoint1.e
 Integration File signal 2: autoint2.e
 Quant Time: Jan 30 00:26:47 2021
 Quant Method : Z:\pestpcbsrv\HPCHEM1\ECD_P\methods\PP012821.M
 Quant Title : GC EXTRACTABLES
 QLast Update : Fri Jan 29 04:07:51 2021
 Response via : Initial Calibration
 Integrator: ChemStation 6890 Scale Mode: Small noise peaks clipped

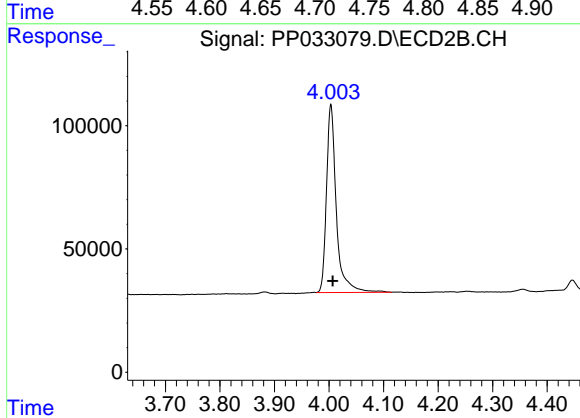
Volume Inj. : 2 µl
 Signal #1 Phase : ZB-MR1 Signal #2 Phase: ZB-MR2
 Signal #1 Info : 30Mx0.32mmx 0.50µ Signal #2 Info : 30M x 0.32mm x 0.25µm



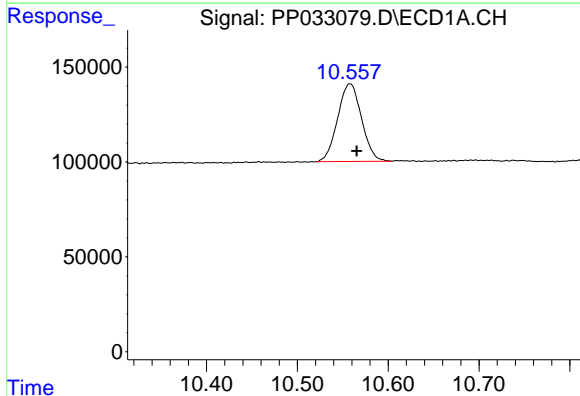


#1 Tetrachloro-m-xylene
 R.T.: 4.731 min
 Delta R.T.: -0.004 min
 Response: 1134016
 Conc: 19.97 ng/ml

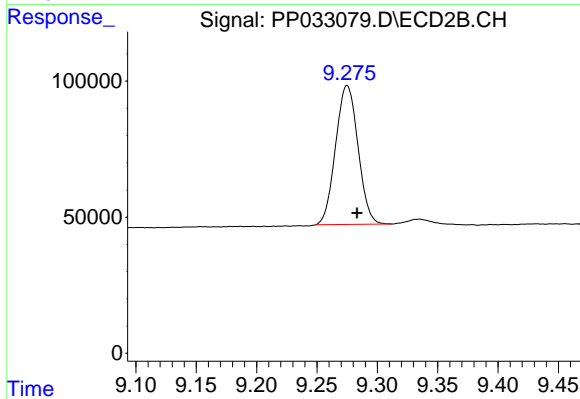
Instrument :
 ECD_P
 ClientSampleId :
 S17-04-D



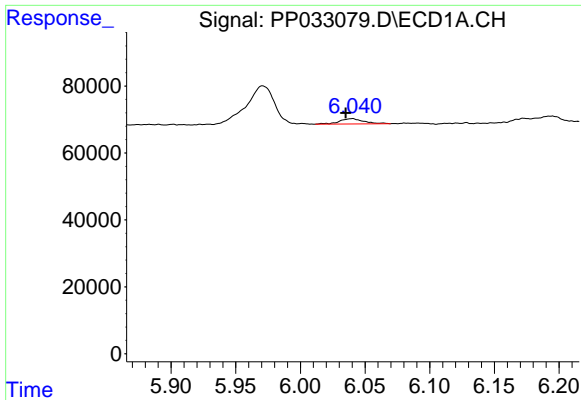
#1 Tetrachloro-m-xylene
 R.T.: 4.003 min
 Delta R.T.: -0.003 min
 Response: 957645
 Conc: 20.83 ng/ml



#2 Decachlorobiphenyl
 R.T.: 10.558 min
 Delta R.T.: -0.007 min
 Response: 747170
 Conc: 20.83 ng/ml

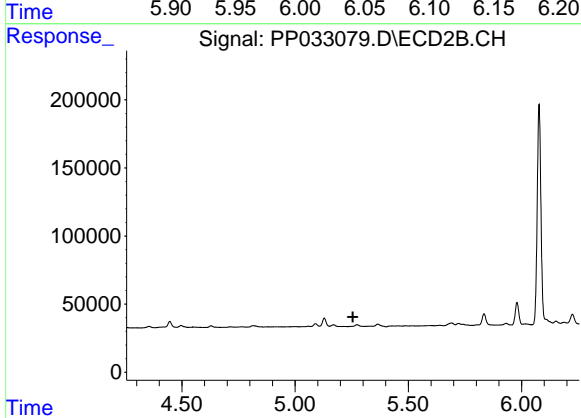


#2 Decachlorobiphenyl
 R.T.: 9.275 min
 Delta R.T.: -0.008 min
 Response: 659811
 Conc: 20.08 ng/ml

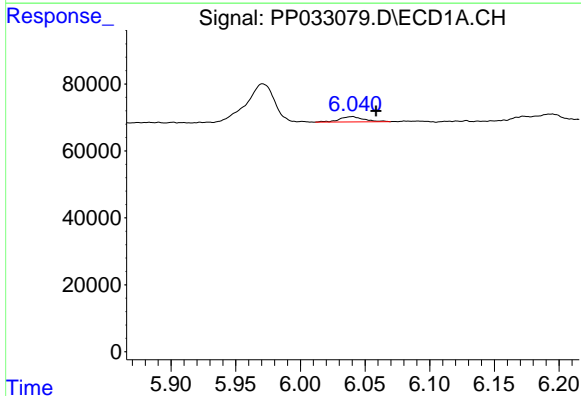


#3 AR-1016-1
 R.T.: 6.040 min
 Delta R.T.: 0.005 min
 Response: 20682
 Conc: 13.43 ng/ml

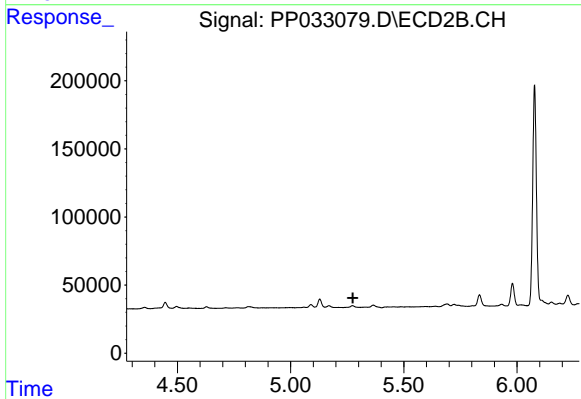
Instrument :
 ECD_P
 ClientSampled :
 S17-04-D



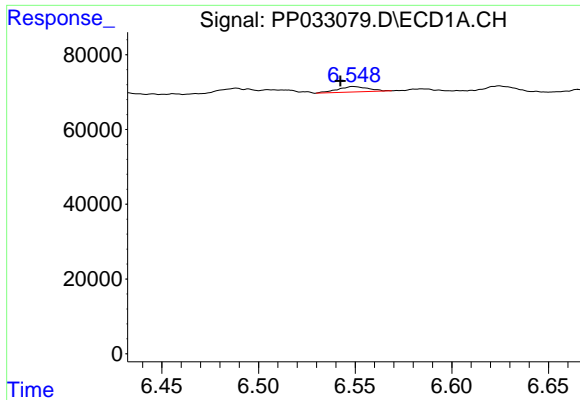
#3 AR-1016-1
 R.T.: 0.000 min
 Exp R.T. : 5.255 min
 Response: 0
 Conc: N.D.



#4 AR-1016-2
 R.T.: 6.040 min
 Delta R.T.: -0.019 min
 Response: 20682
 Conc: 8.70 ng/ml

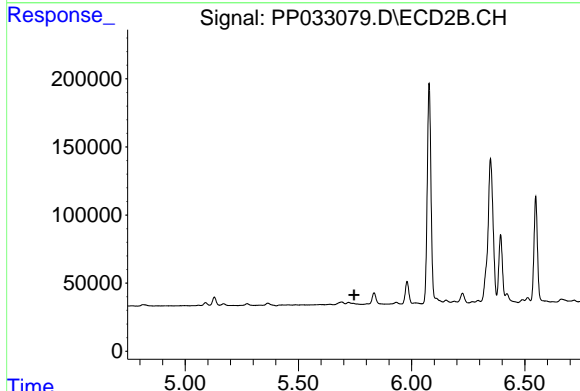


#4 AR-1016-2
 R.T.: 0.000 min
 Exp R.T. : 5.275 min
 Response: 0
 Conc: N.D.

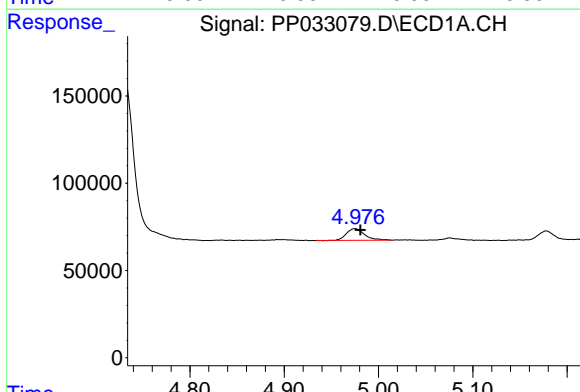


#7 AR-1016-5
 R.T.: 6.549 min
 Delta R.T.: 0.007 min
 Response: 16221
 Conc: 14.35 ng/ml

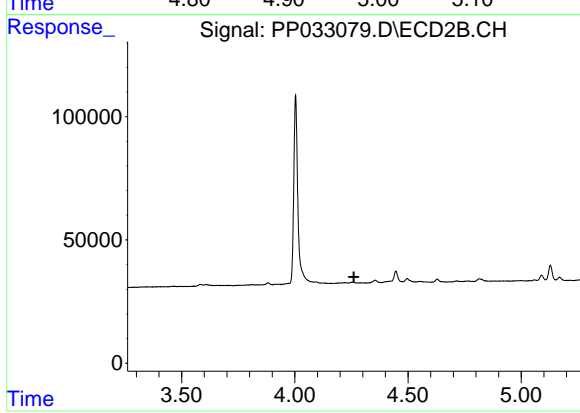
Instrument :
 ECD_P
 ClientSampled :
 S17-04-D



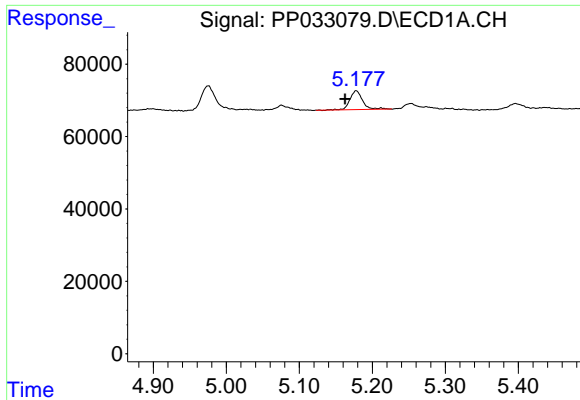
#7 AR-1016-5
 R.T.: 0.000 min
 Exp R.T. : 5.746 min
 Response: 0
 Conc: N.D.



#8 AR-1221-1
 R.T.: 4.975 min
 Delta R.T.: -0.006 min
 Response: 89215
 Conc: 159.76 ng/ml

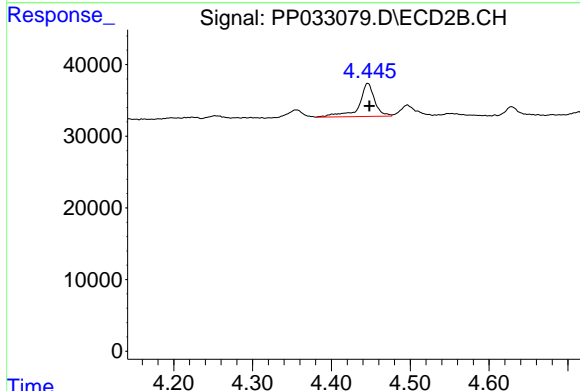


#8 AR-1221-1
 R.T.: 0.000 min
 Exp R.T. : 4.261 min
 Response: 0
 Conc: N.D.

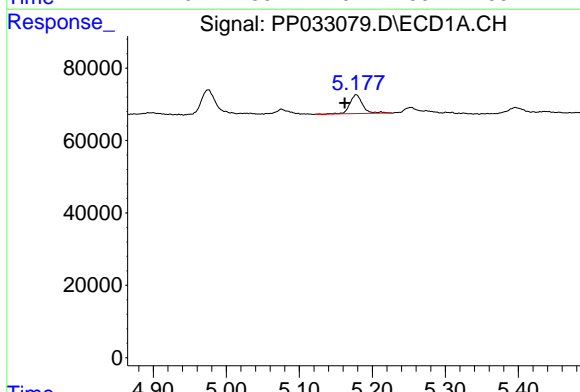


#10 AR-1221-3
 R.T.: 5.178 min
 Delta R.T.: 0.016 min
 Response: 62442
 Conc: 47.68 ng/ml

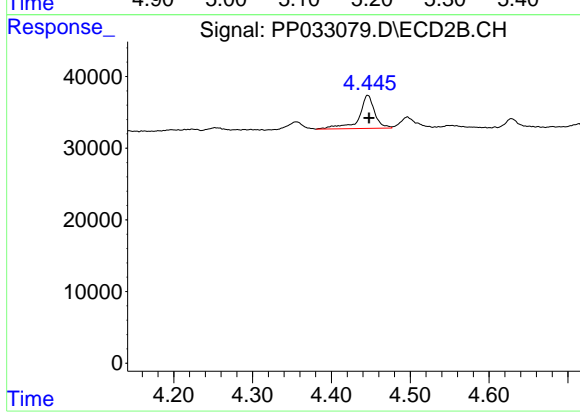
Instrument :
 ECD_P
 ClientSampleId :
 S17-04-D



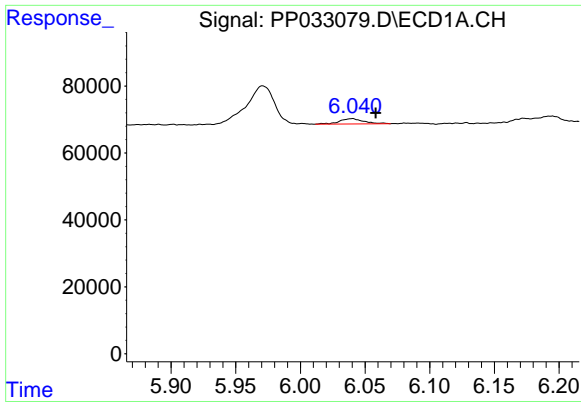
#10 AR-1221-3
 R.T.: 4.446 min
 Delta R.T.: -0.002 min
 Response: 63472
 Conc: 57.60 ng/ml



#11 AR-1232-1
 R.T.: 5.178 min
 Delta R.T.: 0.016 min
 Response: 62442
 Conc: 57.53 ng/ml



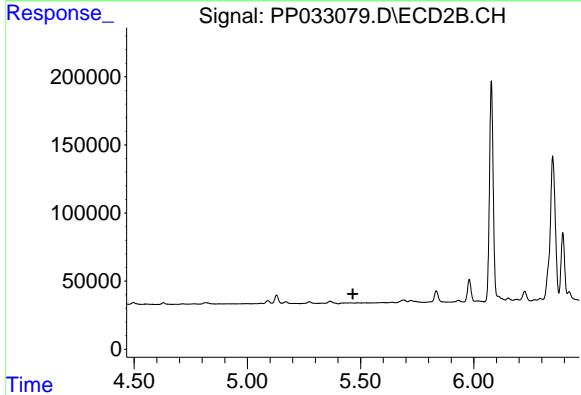
#11 AR-1232-1
 R.T.: 4.446 min
 Delta R.T.: -0.001 min
 Response: 63472
 Conc: 71.18 ng/ml



#13 AR-1232-3

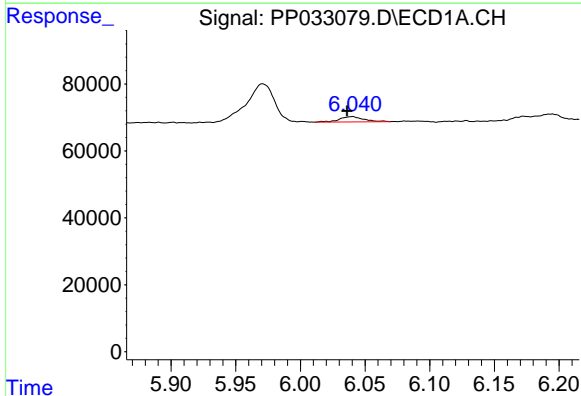
R.T.: 6.040 min
 Delta R.T.: -0.018 min
 Response: 20682
 Conc: 20.29 ng/ml

Instrument :
 ECD_P
ClientSampled :
 S17-04-D



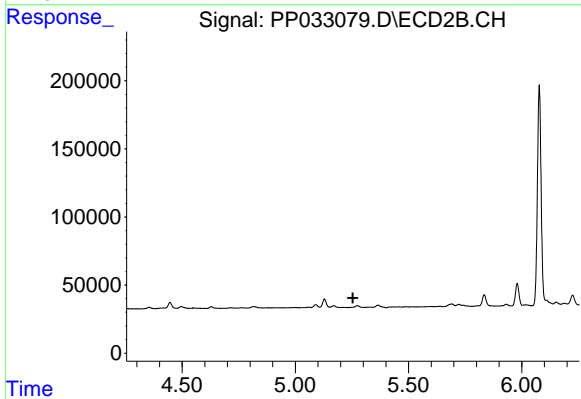
#13 AR-1232-3

R.T.: 0.000 min
 Exp R.T. : 5.466 min
 Response: 0
 Conc: N.D.



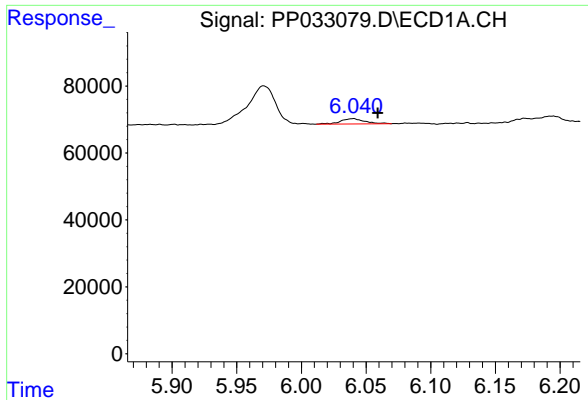
#16 AR-1242-1

R.T.: 6.040 min
 Delta R.T.: 0.004 min
 Response: 20682
 Conc: 16.66 ng/ml



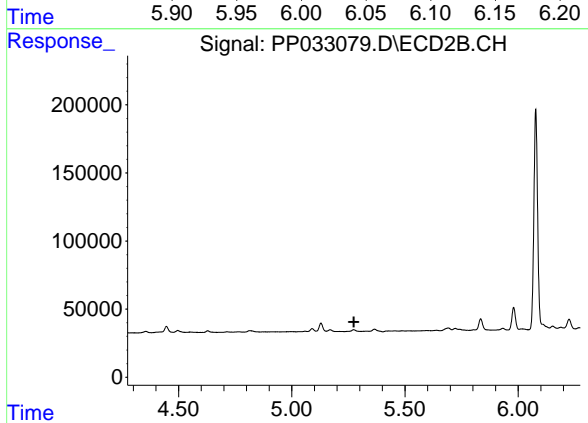
#16 AR-1242-1

R.T.: 0.000 min
 Exp R.T. : 5.255 min
 Response: 0
 Conc: N.D.

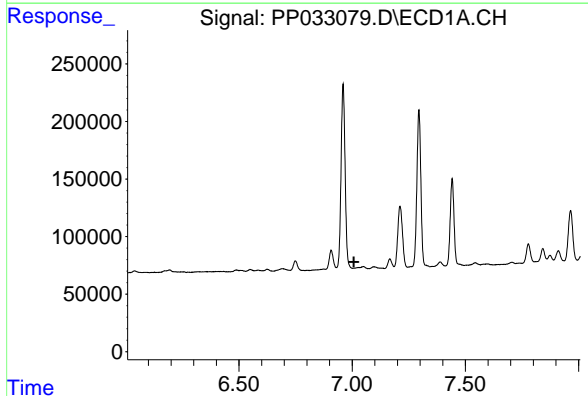


#17 AR-1242-2
 R.T.: 6.040 min
 Delta R.T.: -0.019 min
 Response: 20682
 Conc: 11.14 ng/ml

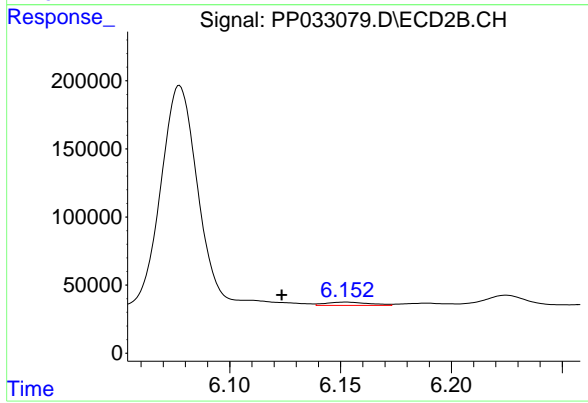
Instrument :
 ECD_P
 ClientSampled :
 S17-04-D



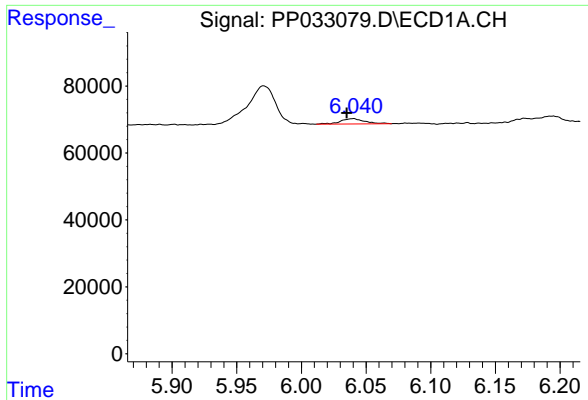
#17 AR-1242-2
 R.T.: 0.000 min
 Exp R.T. : 5.275 min
 Response: 0
 Conc: N.D.



#20 AR-1242-5
 R.T.: 0.000 min
 Exp R.T. : 7.008 min
 Response: 0
 Conc: N.D.

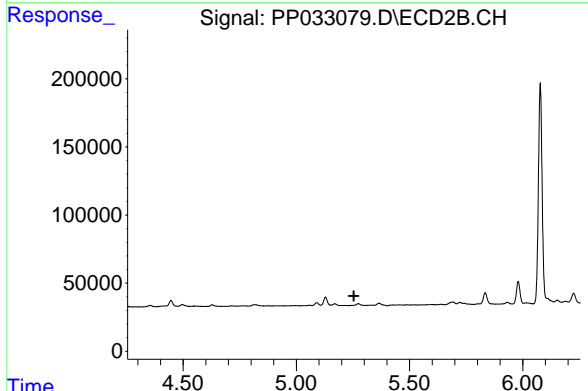


#20 AR-1242-5
 R.T.: 6.152 min
 Delta R.T.: 0.029 min
 Response: 33312
 Conc: 36.76 ng/ml

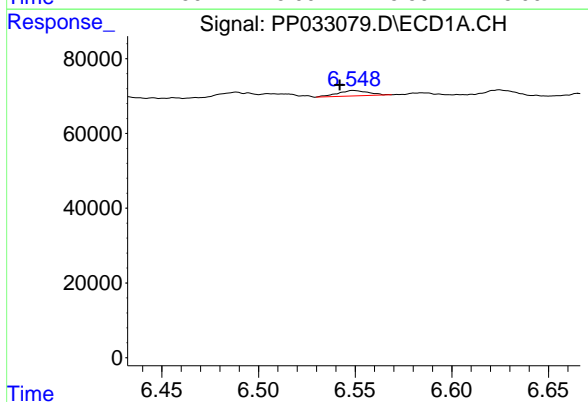


#21 AR-1248-1
 R.T.: 6.040 min
 Delta R.T.: 0.005 min
 Response: 20682
 Conc: 23.24 ng/ml

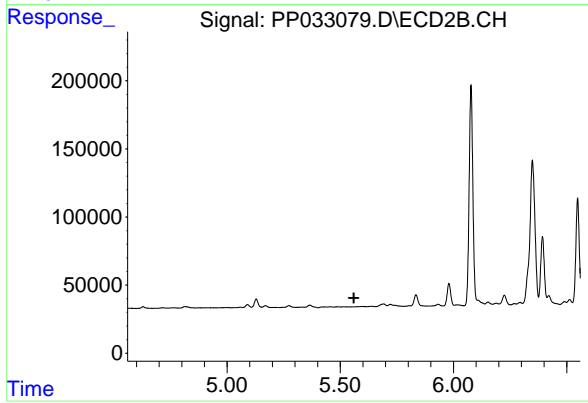
Instrument :
 ECD_P
ClientSampled :
 S17-04-D



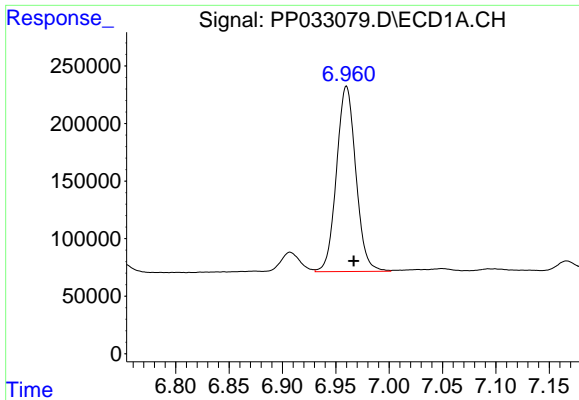
#21 AR-1248-1
 R.T.: 0.000 min
 Exp R.T. : 5.254 min
 Response: 0
 Conc: N.D.



#23 AR-1248-3
 R.T.: 6.549 min
 Delta R.T.: 0.007 min
 Response: 16221
 Conc: 10.78 ng/ml



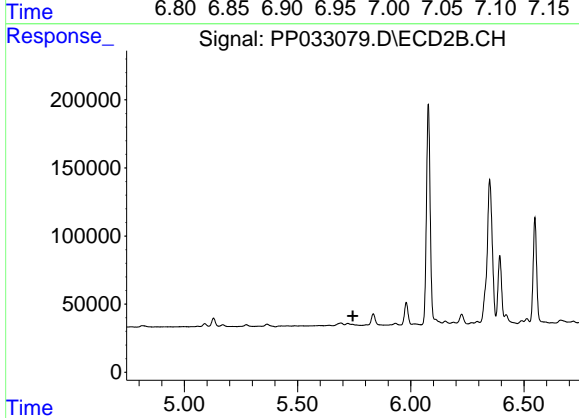
#23 AR-1248-3
 R.T.: 0.000 min
 Exp R.T. : 5.560 min
 Response: 0
 Conc: N.D.



#24 AR-1248-4

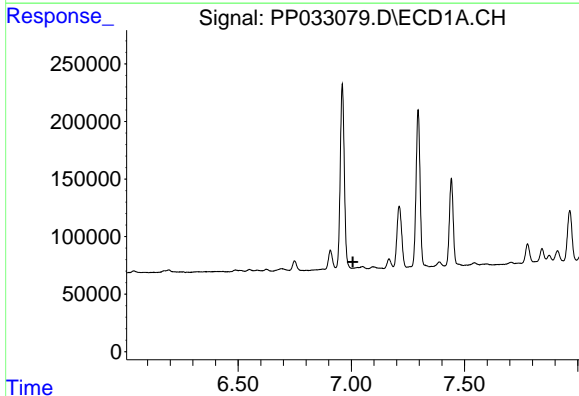
R.T.: 6.960 min
Delta R.T.: -0.007 min
Response: 2028946
Conc: 1289.64 ng/ml

Instrument :
ECD_P
ClientSampleId :
S17-04-D



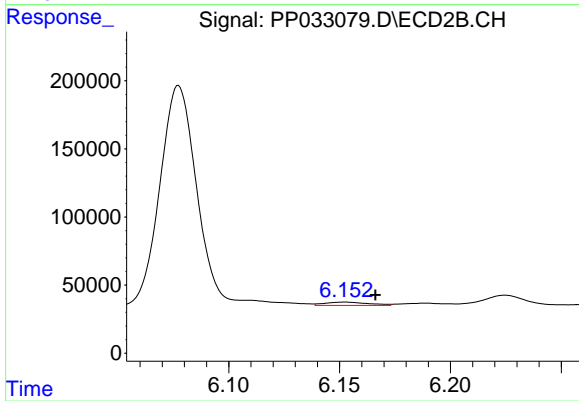
#24 AR-1248-4

R.T.: 0.000 min
Exp R.T. : 5.744 min
Response: 0
Conc: N.D.



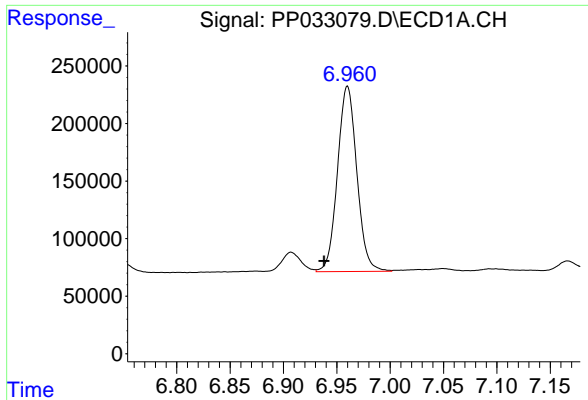
#25 AR-1248-5

R.T.: 0.000 min
Exp R.T. : 7.007 min
Response: 0
Conc: N.D.



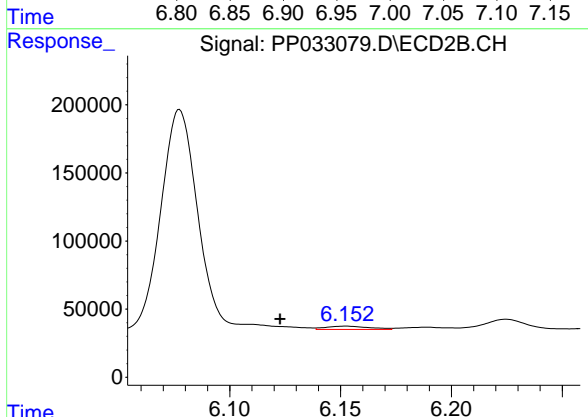
#25 AR-1248-5

R.T.: 6.152 min
Delta R.T.: -0.014 min
Response: 33312
Conc: 27.41 ng/ml

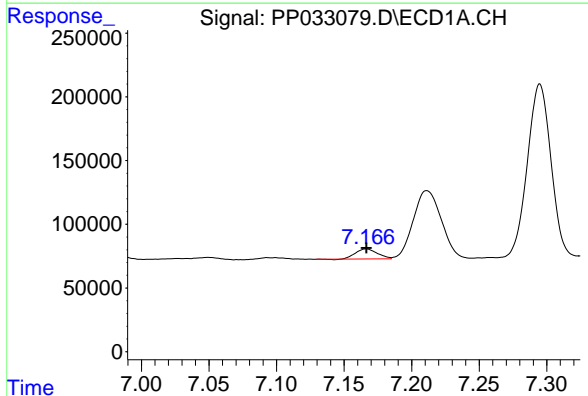


#26 AR-1254-1
 R.T.: 6.960 min
 Delta R.T.: 0.022 min
 Response: 2028946
 Conc: 1204.22 ng/ml

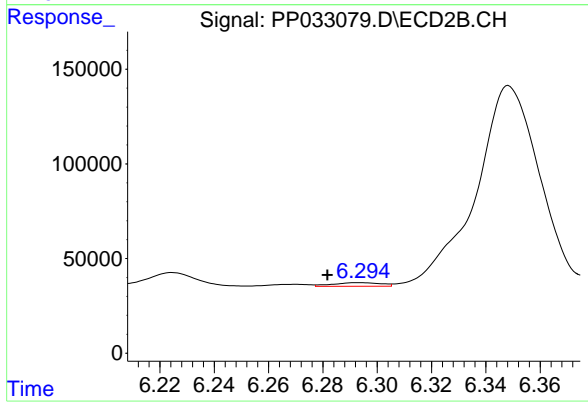
Instrument :
 ECD_P
 ClientSampleId :
 S17-04-D



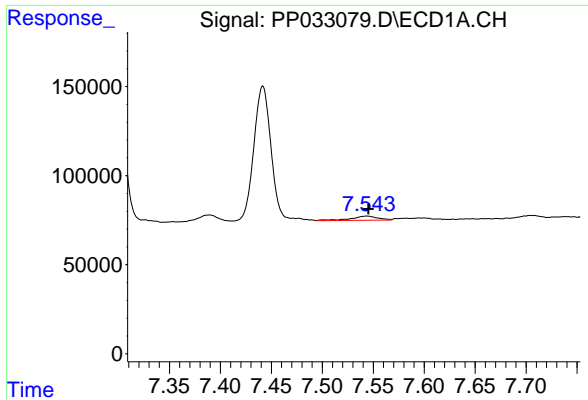
#26 AR-1254-1
 R.T.: 6.152 min
 Delta R.T.: 0.030 min
 Response: 33312
 Conc: 16.62 ng/ml



#27 AR-1254-2
 R.T.: 7.166 min
 Delta R.T.: 0.000 min
 Response: 88103
 Conc: 34.12 ng/ml



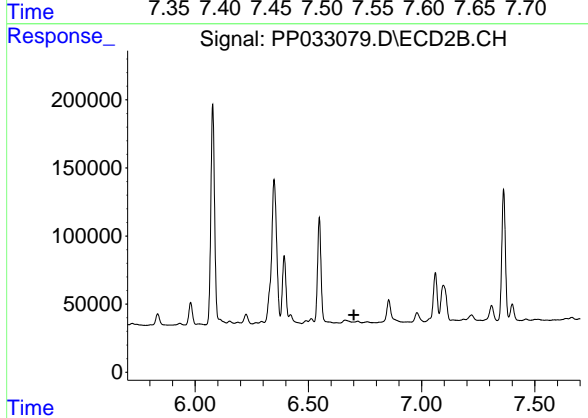
#27 AR-1254-2
 R.T.: 6.293 min
 Delta R.T.: 0.011 min
 Response: 23311
 Conc: 13.64 ng/ml



#28 AR-1254-3

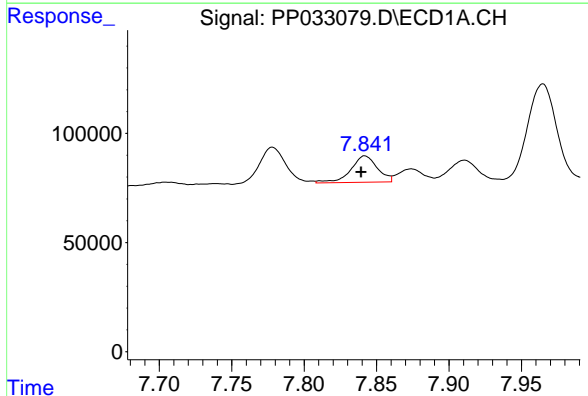
R.T.: 7.544 min
 Delta R.T.: -0.001 min
 Response: 42941
 Conc: 16.43 ng/ml

Instrument :
 ECD_P
 ClientSampled :
 S17-04-D



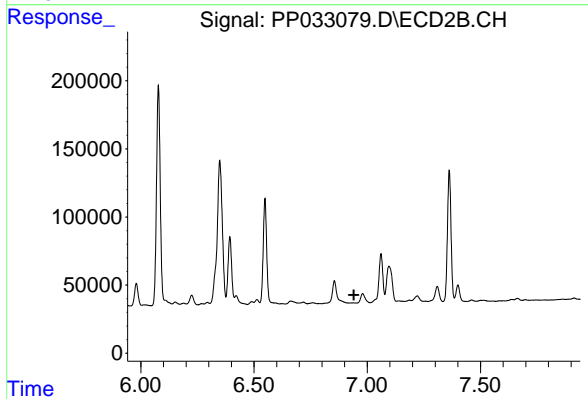
#28 AR-1254-3

R.T.: 0.000 min
 Exp R.T. : 6.701 min
 Response: 0
 Conc: N.D.



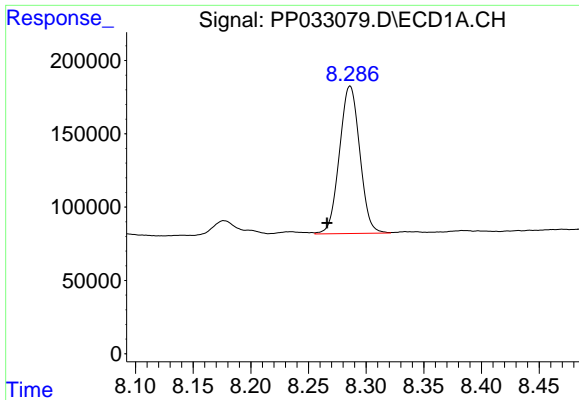
#29 AR-1254-4

R.T.: 7.842 min
 Delta R.T.: 0.003 min
 Response: 155218
 Conc: 87.97 ng/ml



#29 AR-1254-4

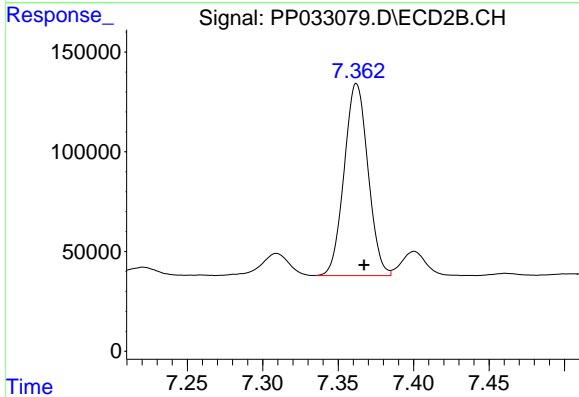
R.T.: 0.000 min
 Exp R.T. : 6.941 min
 Response: 0
 Conc: N.D.



#30 AR-1254-5

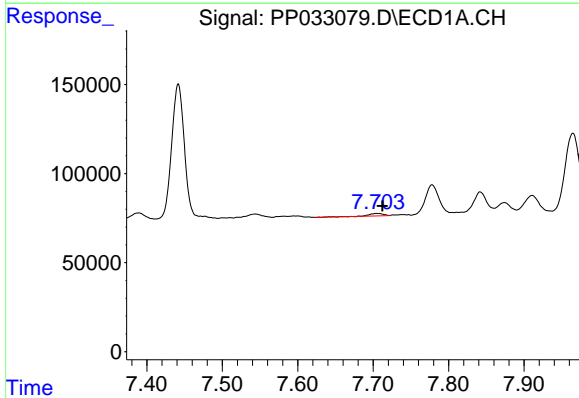
R.T.: 8.286 min
 Delta R.T.: 0.020 min
 Response: 1226659
 Conc: 619.60 ng/ml

Instrument :
 ECD_P
 ClientSampled :
 S17-04-D



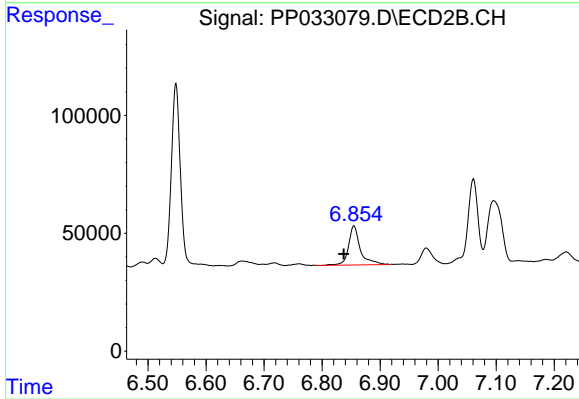
#30 AR-1254-5

R.T.: 7.362 min
 Delta R.T.: -0.005 min
 Response: 1058380
 Conc: 468.61 ng/ml



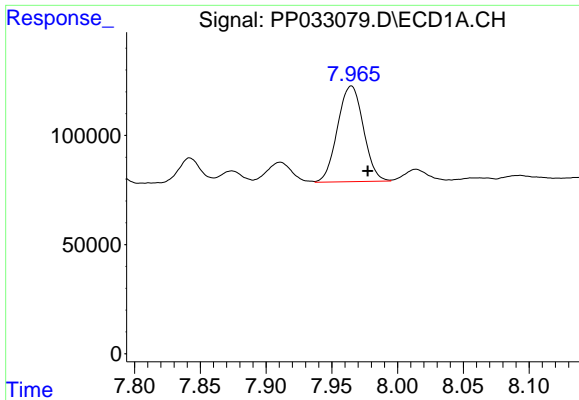
#31 AR-1260-1

R.T.: 7.705 min
 Delta R.T.: -0.008 min
 Response: 18185
 Conc: 9.84 ng/ml



#31 AR-1260-1

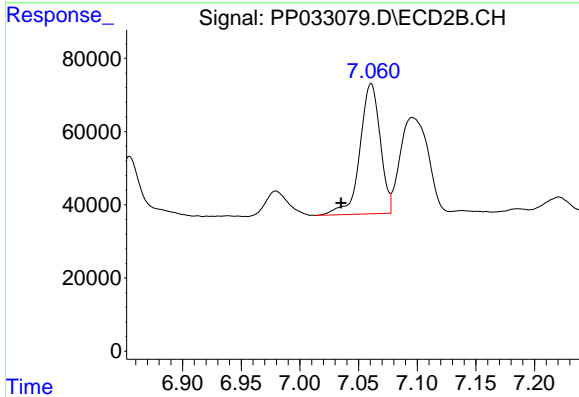
R.T.: 6.855 min
 Delta R.T.: 0.018 min
 Response: 234235
 Conc: 129.51 ng/ml



#32 AR-1260-2

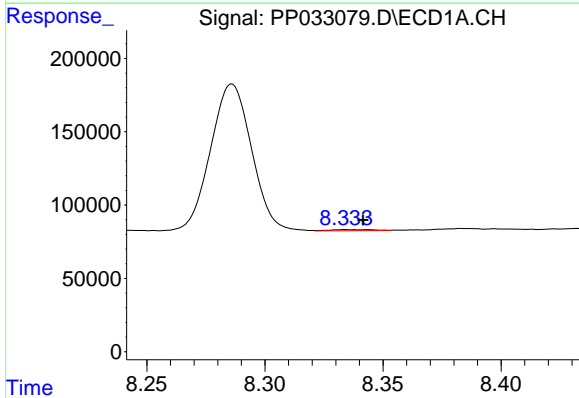
R.T.: 7.965 min
 Delta R.T.: -0.013 min
 Response: 600312
 Conc: 245.22 ng/ml

Instrument :
 ECD_P
 ClientSampleId :
 S17-04-D



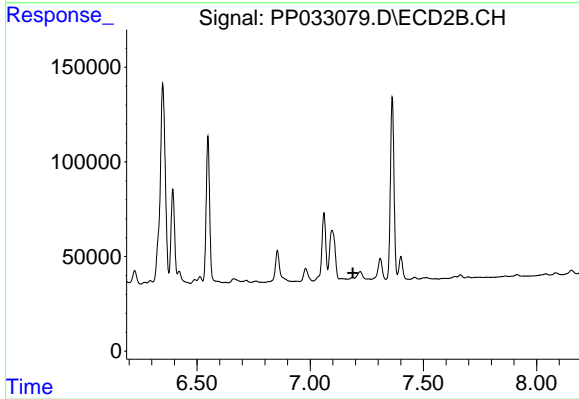
#32 AR-1260-2

R.T.: 7.061 min
 Delta R.T.: 0.026 min
 Response: 427885
 Conc: 206.63 ng/ml



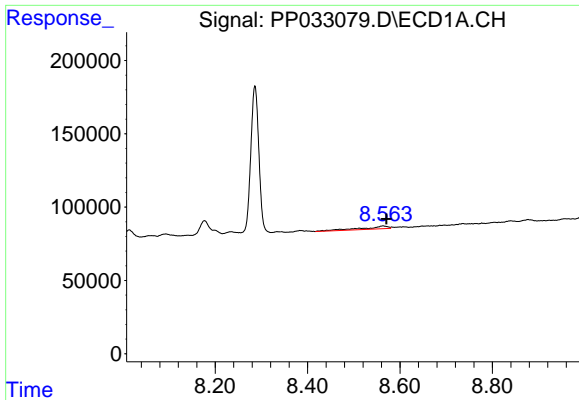
#33 AR-1260-3

R.T.: 8.334 min
 Delta R.T.: -0.008 min
 Response: 9491
 Conc: 4.45 ng/ml



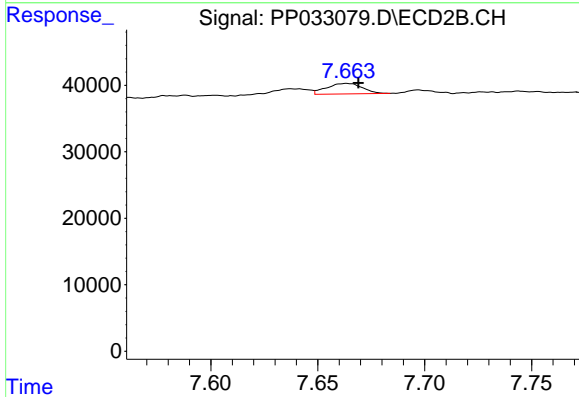
#33 AR-1260-3

R.T.: 0.000 min
 Exp R.T.: 7.189 min
 Response: 0
 Conc: N.D.

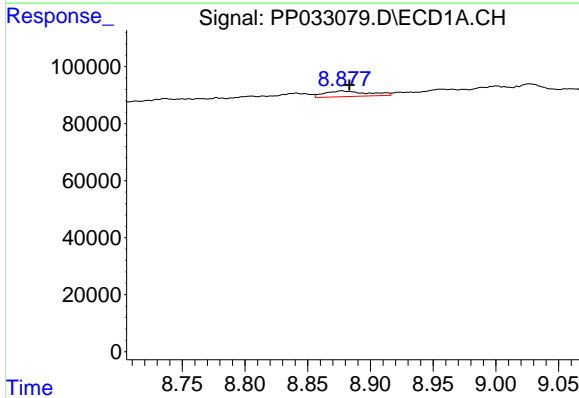


#34 AR-1260-4
 R.T.: 8.563 min
 Delta R.T.: -0.008 min
 Response: 77557
 Conc: 37.99 ng/ml

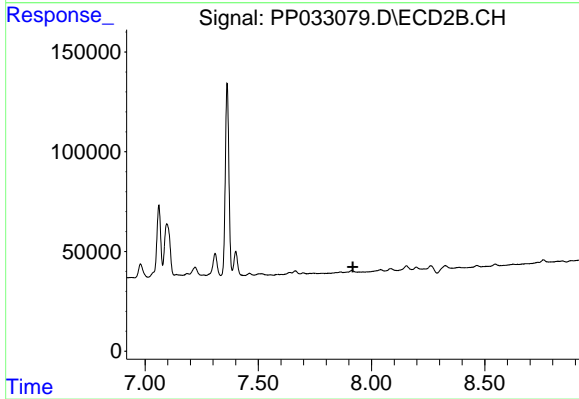
Instrument :
 ECD_P
 ClientSampleId :
 S17-04-D



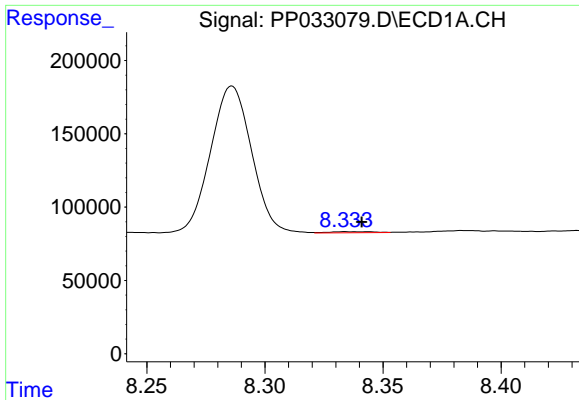
#34 AR-1260-4
 R.T.: 7.664 min
 Delta R.T.: -0.005 min
 Response: 18438
 Conc: 10.78 ng/ml



#35 AR-1260-5
 R.T.: 8.877 min
 Delta R.T.: -0.006 min
 Response: 47674
 Conc: 10.74 ng/ml

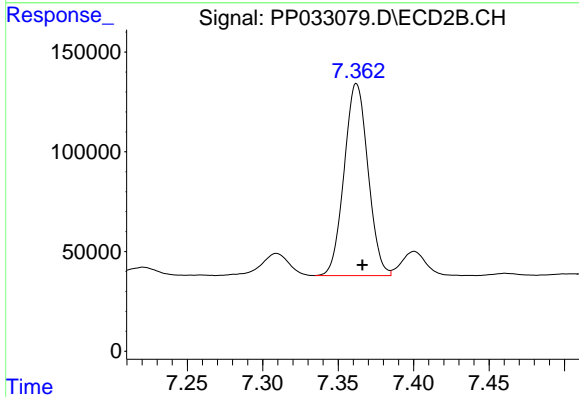


#35 AR-1260-5
 R.T.: 0.000 min
 Exp R.T. : 7.918 min
 Response: 0
 Conc: N.D.

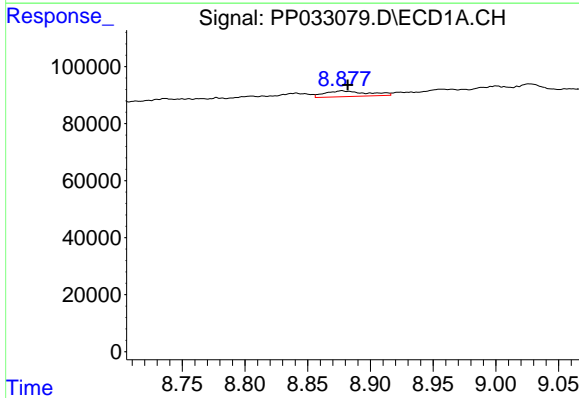


#36 AR-1262-1
 R.T.: 8.334 min
 Delta R.T.: -0.007 min
 Response: 9491
 Conc: 3.07 ng/ml

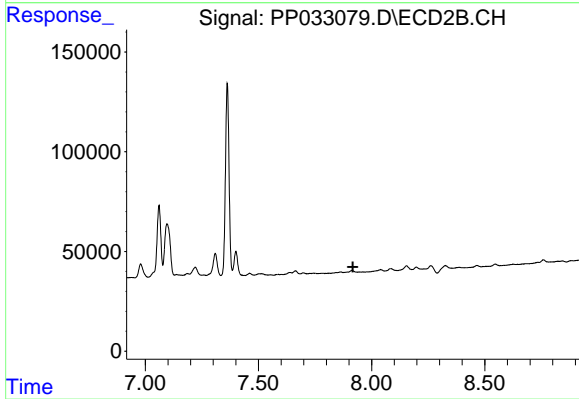
Instrument :
 ECD_P
 ClientSampled :
 S17-04-D



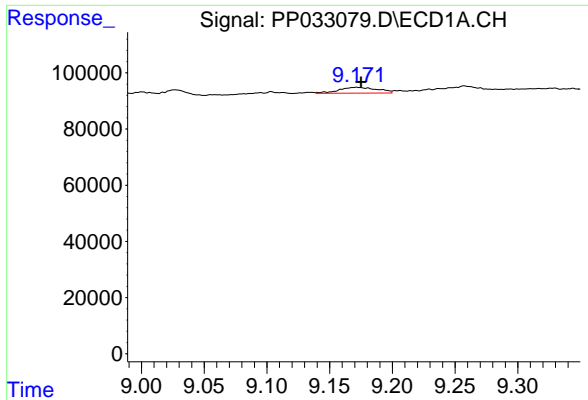
#36 AR-1262-1
 R.T.: 7.362 min
 Delta R.T.: -0.004 min
 Response: 1058380
 Conc: 895.88 ng/ml



#37 AR-1262-2
 R.T.: 8.877 min
 Delta R.T.: -0.005 min
 Response: 47674
 Conc: 10.00 ng/ml

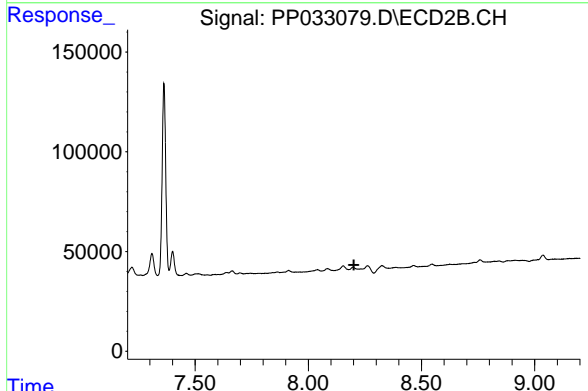


#37 AR-1262-2
 R.T.: 0.000 min
 Exp R.T. : 7.917 min
 Response: 0
 Conc: N.D.

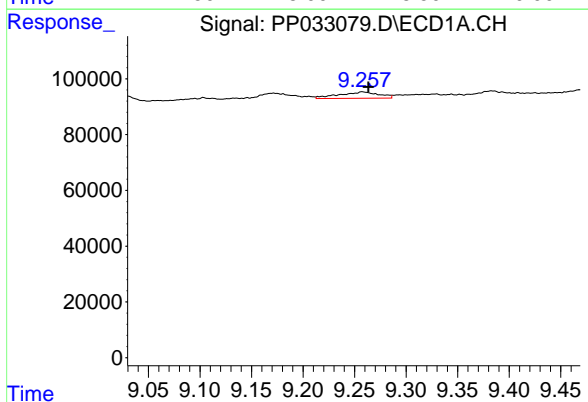


#38 AR-1262-3
 R.T.: 9.171 min
 Delta R.T.: -0.004 min
 Response: 43757
 Conc: 13.01 ng/ml

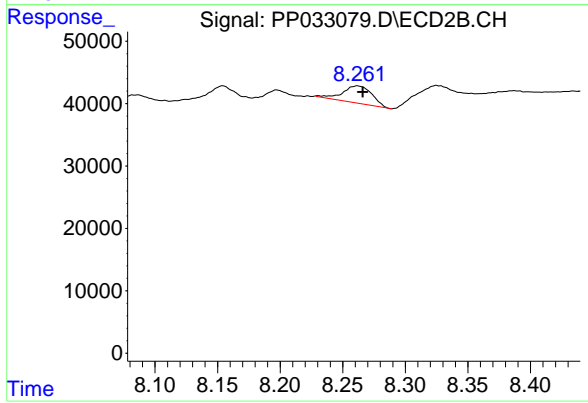
Instrument :
 ECD_P
 ClientSampled :
 S17-04-D



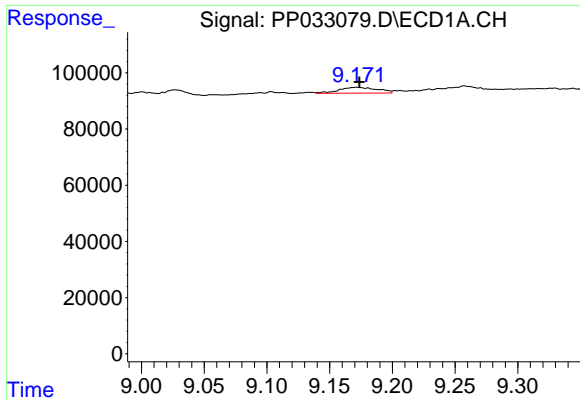
#38 AR-1262-3
 R.T.: 0.000 min
 Exp R.T. : 8.201 min
 Response: 0
 Conc: N.D.



#39 AR-1262-4
 R.T.: 9.258 min
 Delta R.T.: -0.006 min
 Response: 62099
 Conc: 22.35 ng/ml

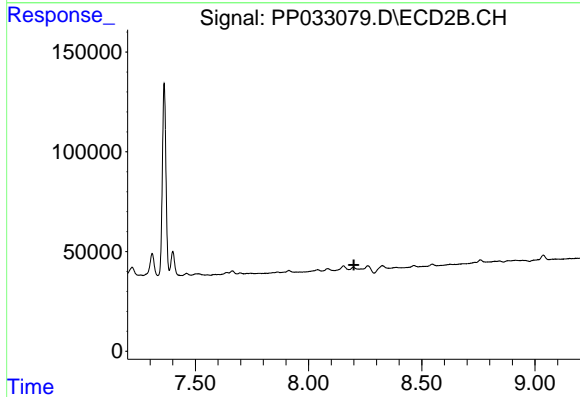


#39 AR-1262-4
 R.T.: 8.262 min
 Delta R.T.: -0.004 min
 Response: 45228
 Conc: 14.44 ng/ml

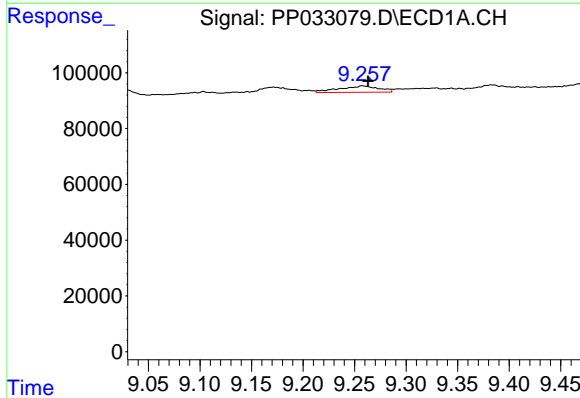


#41 AR-1268-1
 R.T.: 9.171 min
 Delta R.T.: -0.002 min
 Response: 43757
 Conc: 7.08 ng/ml

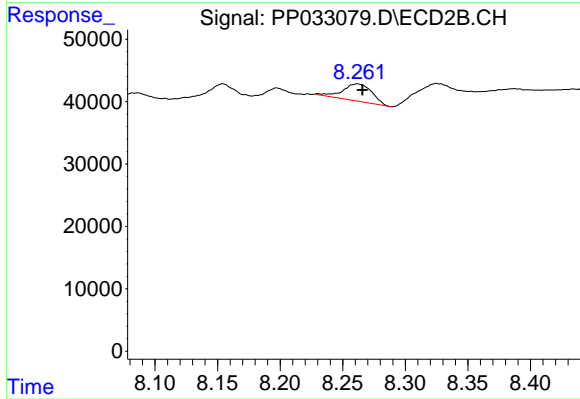
Instrument :
 ECD_P
 ClientSampled :
 S17-04-D



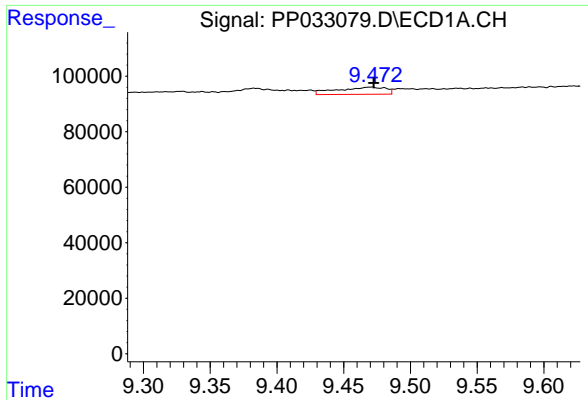
#41 AR-1268-1
 R.T.: 0.000 min
 Exp R.T. : 8.200 min
 Response: 0
 Conc: N.D.



#42 AR-1268-2
 R.T.: 9.258 min
 Delta R.T.: -0.006 min
 Response: 62099
 Conc: 11.10 ng/ml



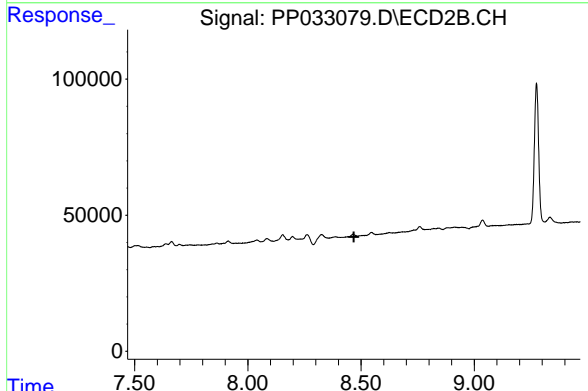
#42 AR-1268-2
 R.T.: 8.262 min
 Delta R.T.: -0.004 min
 Response: 45228
 Conc: 10.08 ng/ml



#43 AR-1268-3

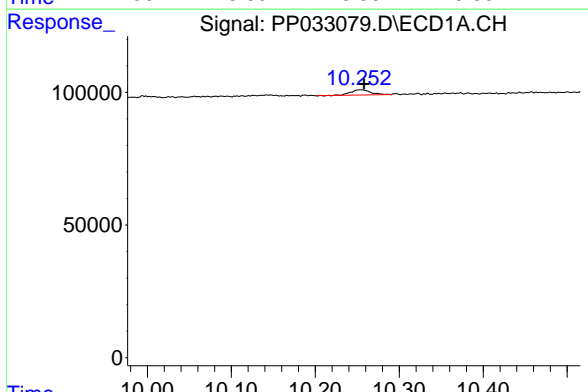
R.T.: 9.471 min
 Delta R.T.: -0.002 min
 Response: 65279
 Conc: 12.61 ng/ml

Instrument :
 ECD_P
 ClientSampled :
 S17-04-D



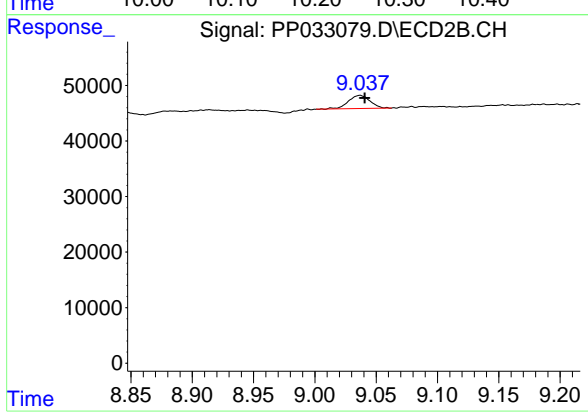
#43 AR-1268-3

R.T.: 0.000 min
 Exp R.T. : 8.468 min
 Response: 0
 Conc: N.D.



#45 AR-1268-5

R.T.: 10.254 min
 Delta R.T.: -0.004 min
 Response: 32480
 Conc: 2.51 ng/ml



#45 AR-1268-5

R.T.: 9.037 min
 Delta R.T.: -0.004 min
 Response: 29245
 Conc: 2.59 ng/ml