

Data Path : Z:\pestpcbsrv\HPCHEM1\ECD\_P\Data\PP012921\  
 Data File : PP033112.D  
 Signal(s) : Signal #1: ECD1A.CH Signal #2: ECD2B.CH  
 Acq On : 30 Jan 2021 3:02  
 Operator : DD\AJ  
 Sample : M1286-09  
 Misc :  
 ALS Vial : 47 Sample Multiplier: 1

Instrument :  
 ECD\_P  
 ClientSampleId :

Integration File signal 1: autoint1.e  
 Integration File signal 2: autoint2.e  
 Quant Time: Jan 30 03:55:50 2021  
 Quant Method : Z:\pestpcbsrv\HPCHEM1\ECD\_P\methods\PP012821.M  
 Quant Title : GC EXTRACTABLES  
 QLast Update : Fri Jan 29 04:07:51 2021  
 Response via : Initial Calibration  
 Integrator: ChemStation 6890 Scale Mode: Small noise peaks clipped

Volume Inj. : 2 µl  
 Signal #1 Phase : ZB-MR1 Signal #2 Phase: ZB-MR2  
 Signal #1 Info : 30Mx0.32mmx 0.50µ Signal #2 Info : 30M x 0.32mm x 0.25µm

Compound	RT#1	RT#2	Resp#1	Resp#2	ng/ml	ng/ml
-----						
System Monitoring Compounds						
1) SA Tetrachlo...	4.731	4.004	1184344	1001231	20.858	21.780
2) SA Decachlor...	10.557	9.273	897156	726221	25.006	22.101
Target Compounds						
3) L1 AR-1016-1	6.040	5.274f	45283	20987	29.413	16.486 #
4) L1 AR-1016-2	6.040f	5.274	45283	20987	19.046	11.126 #
8) L2 AR-1221-1	4.974	0.000	117993	0	211.289	N.D. #
12) L3 AR-1232-2	0.000	5.274	0	20987	N.D.	25.486 #
13) L3 AR-1232-3	6.040f	0.000	45283	0	44.427	N.D. #
16) L4 AR-1242-1	6.040	5.274f	45283	20987	36.477	20.824 #
17) L4 AR-1242-2	6.040f	5.274	45283	20987	24.395	14.159 #
20) L4 AR-1242-5	0.000	6.124	0	50298	N.D.	55.503 #
21) L5 AR-1248-1	6.040	5.274f	45283	20987	50.882	28.021 #
24) L5 AR-1248-4	6.941f	0.000	35429	0	22.519	N.D. #
26) L6 AR-1254-1	6.941	6.124	35429	50298	21.028	25.095
27) L6 AR-1254-2	7.165	0.000	55573	0	21.523	N.D. #
28) L6 AR-1254-3	7.540	6.696	37887	38939	14.494	14.323
29) L6 AR-1254-4	7.834	0.000	26920	0	15.258	N.D. #
30) L6 AR-1254-5	8.260	7.362	45772	61082	23.120	27.045
31) L7 AR-1260-1	7.705	6.831	55807	30295	30.193	16.750 #
32) L7 AR-1260-2	7.968	7.031	66033	31130	26.974	15.033 #
33) L7 AR-1260-3	0.000	7.181	0	25863	N.D.	11.964 #
34) L7 AR-1260-4	8.556f	7.662	63863	23660	31.280	13.832 #
35) L7 AR-1260-5	8.876	7.911	50379	52830	11.345	13.752
36) L8 AR-1262-1	0.000	7.362	0	61082	N.D.	51.704 #
37) L8 AR-1262-2	8.876	7.911	50379	52830	10.568	13.533 #
38) L8 AR-1262-3	9.171	8.197	38245	23840	11.369	13.819
39) L8 AR-1262-4	9.259	8.260	31278	44381	11.258	14.170 #
41) L9 AR-1268-1	9.171	8.197	38245	23840	6.186	5.031
42) L9 AR-1268-2	9.259	8.260	31278	44381	5.592	9.895 #
43) L9 AR-1268-3	0.000	8.464	0	16958	N.D.	4.125 #
45) L9 AR-1268-5	10.251	9.035	34093	28613	2.631	2.537

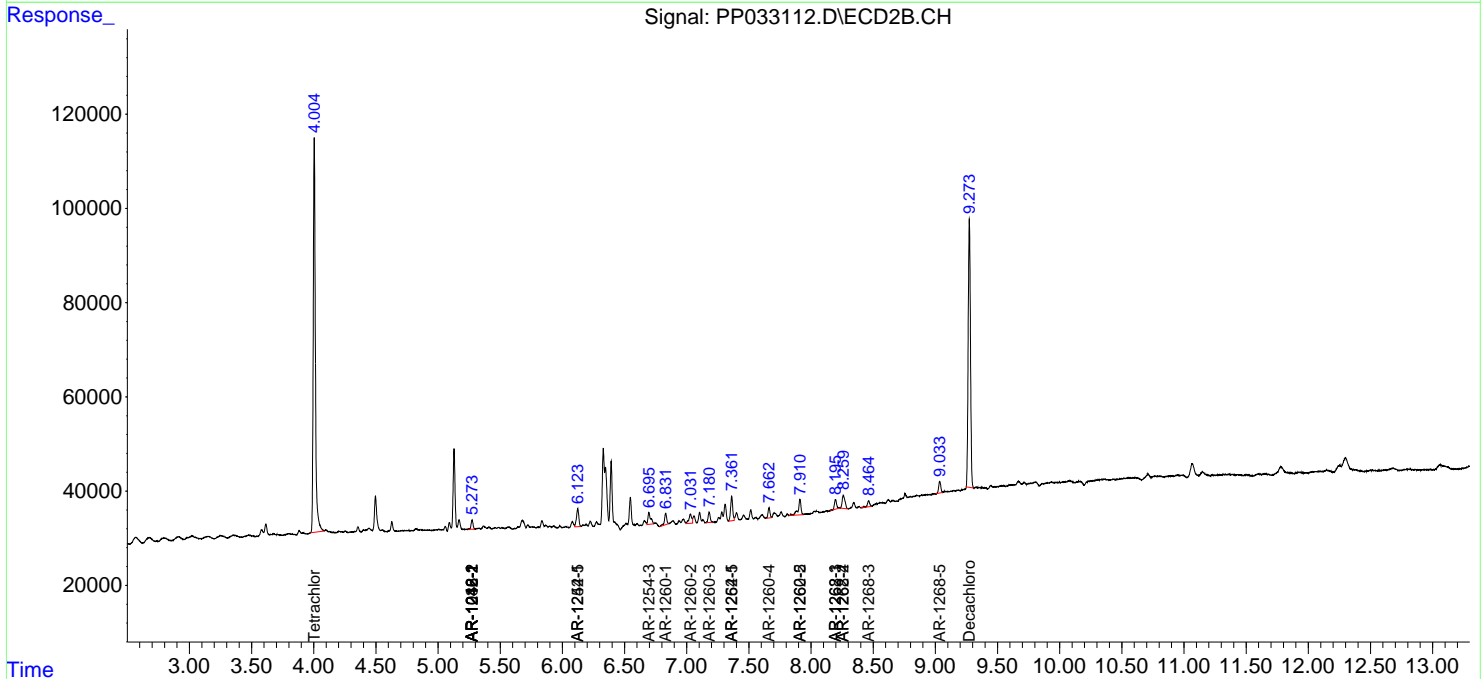
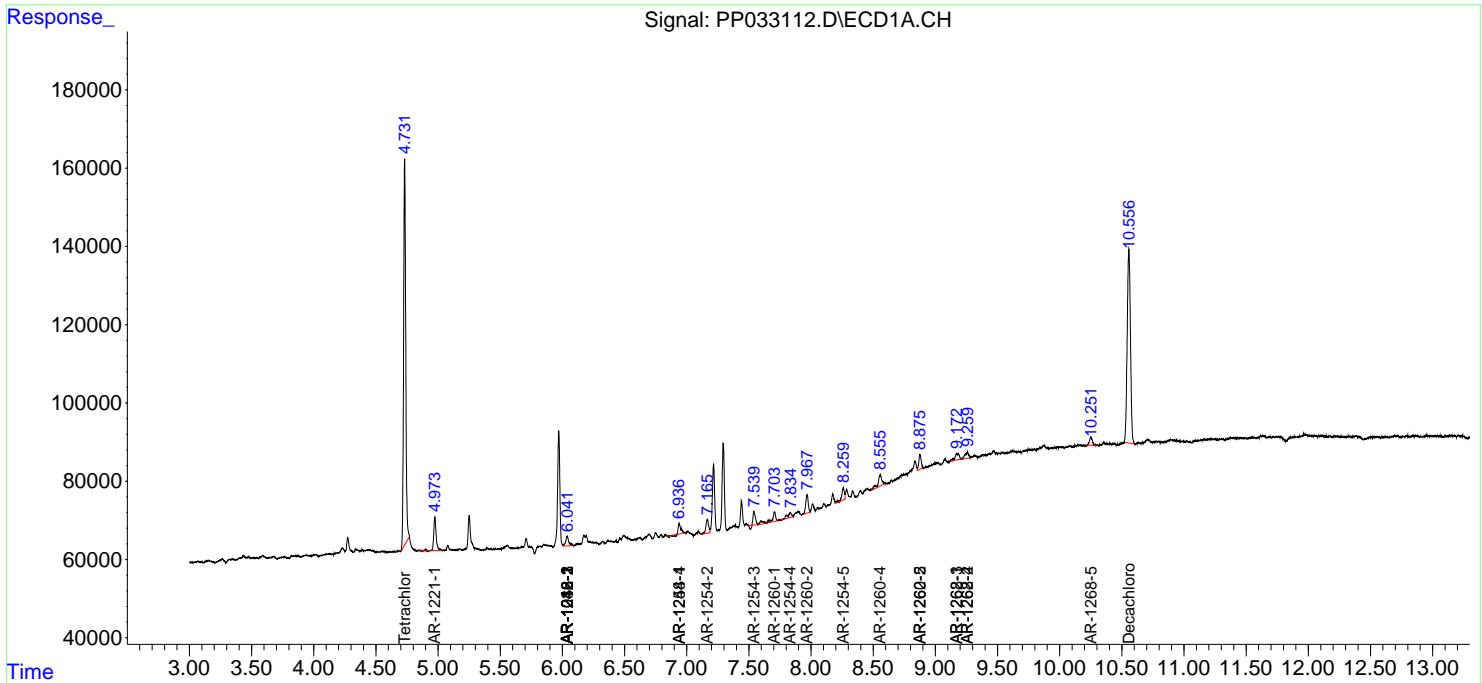
(f)=RT Delta > 1/2 Window (#)=Amounts differ by > 25% (m)=manual int.

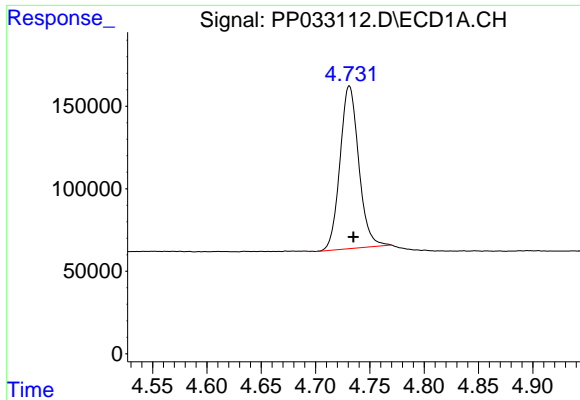
Data Path : Z:\pestpcbsrv\HPCHEM1\ECD\_P\Data\PP012921\  
 Data File : PP033112.D  
 Signal(s) : Signal #1: ECD1A.CH Signal #2: ECD2B.CH  
 Acq On : 30 Jan 2021 3:02  
 Operator : DD\AJ  
 Sample : M1286-09  
 Misc :  
 ALS Vial : 47 Sample Multiplier: 1

Instrument :  
 ECD\_P  
 ClientSampled :

Integration File signal 1: autoint1.e  
 Integration File signal 2: autoint2.e  
 Quant Time: Jan 30 03:55:50 2021  
 Quant Method : Z:\pestpcbsrv\HPCHEM1\ECD\_P\methods\PP012821.M  
 Quant Title : GC EXTRACTABLES  
 QLast Update : Fri Jan 29 04:07:51 2021  
 Response via : Initial Calibration  
 Integrator: ChemStation 6890 Scale Mode: Small noise peaks clipped

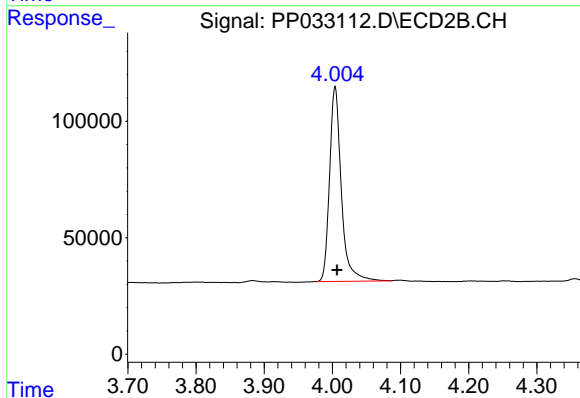
Volume Inj. : 2 µl  
 Signal #1 Phase : ZB-MR1 Signal #2 Phase: ZB-MR2  
 Signal #1 Info : 30Mx0.32mmx 0.50µ Signal #2 Info : 30M x 0.32mm x 0.25µm



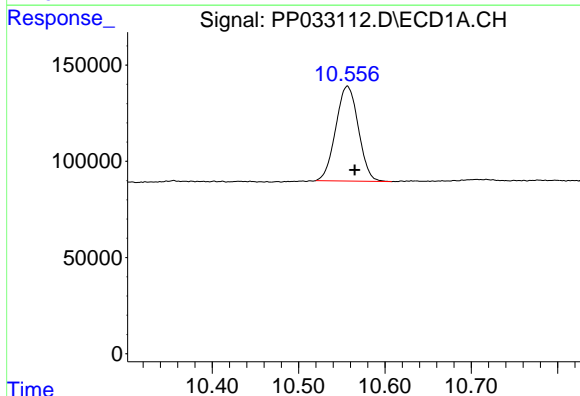


#1 Tetrachloro-m-xylene  
 R.T.: 4.731 min  
 Delta R.T.: -0.004 min  
 Response: 1184344  
 Conc: 20.86 ng/ml

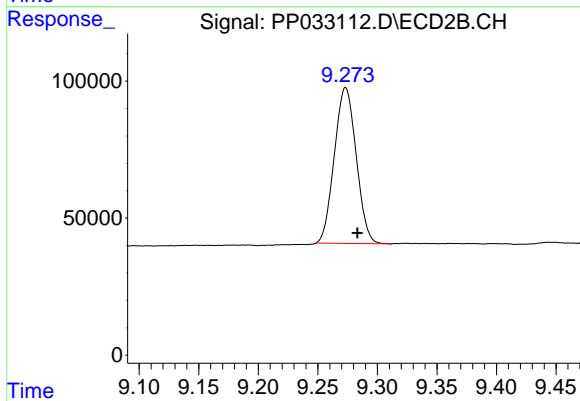
Instrument :  
 ECD\_P  
 ClientSampled :



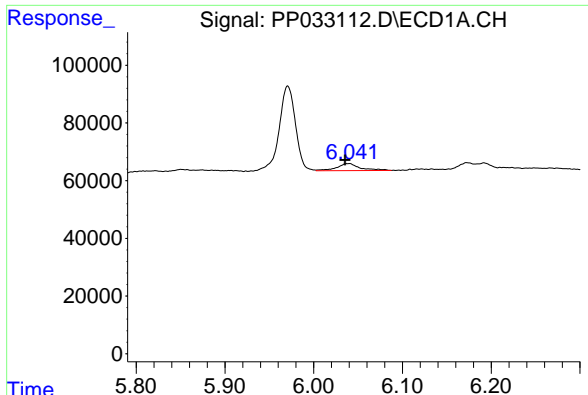
#1 Tetrachloro-m-xylene  
 R.T.: 4.004 min  
 Delta R.T.: -0.003 min  
 Response: 1001231  
 Conc: 21.78 ng/ml



#2 Decachlorobiphenyl  
 R.T.: 10.557 min  
 Delta R.T.: -0.009 min  
 Response: 897156  
 Conc: 25.01 ng/ml



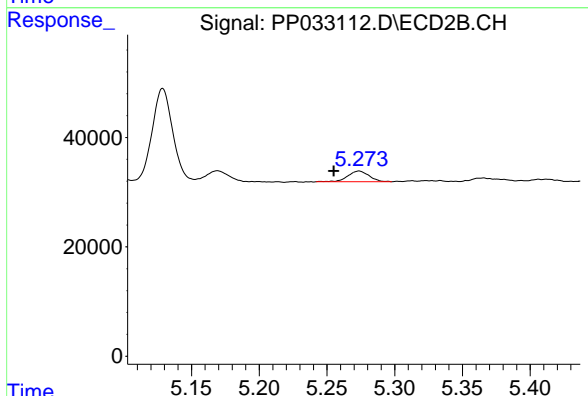
#2 Decachlorobiphenyl  
 R.T.: 9.273 min  
 Delta R.T.: -0.010 min  
 Response: 726221  
 Conc: 22.10 ng/ml



#3 AR-1016-1

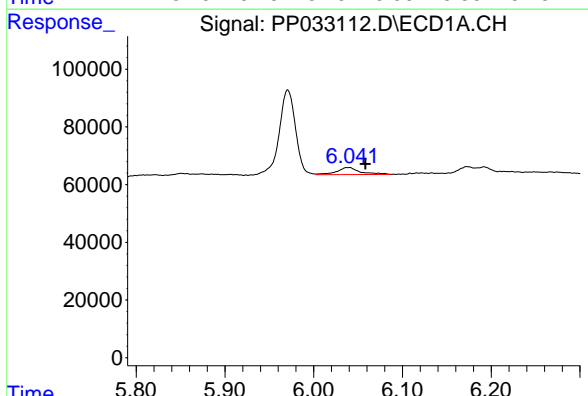
R.T.: 6.040 min  
 Delta R.T.: 0.005 min  
 Response: 45283  
 Conc: 29.41 ng/ml

Instrument :  
 ECD\_P  
 ClientSampled :



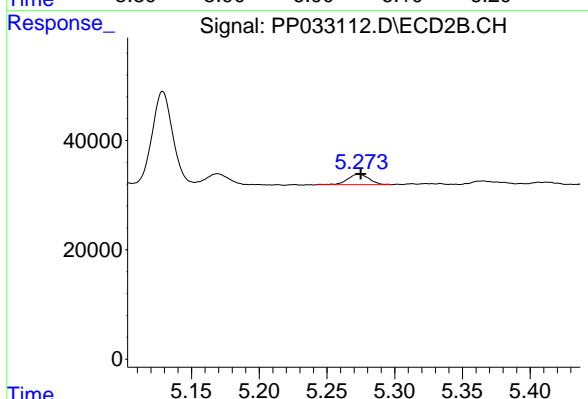
#3 AR-1016-1

R.T.: 5.274 min  
 Delta R.T.: 0.019 min  
 Response: 20987  
 Conc: 16.49 ng/ml



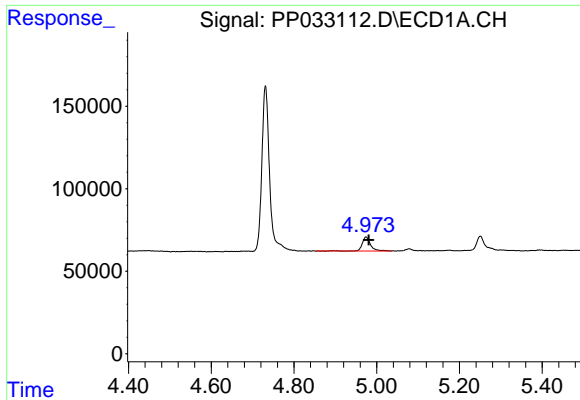
#4 AR-1016-2

R.T.: 6.040 min  
 Delta R.T.: -0.019 min  
 Response: 45283  
 Conc: 19.05 ng/ml



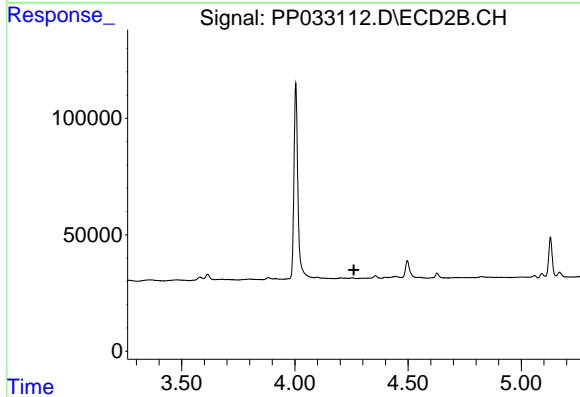
#4 AR-1016-2

R.T.: 5.274 min  
 Delta R.T.: -0.001 min  
 Response: 20987  
 Conc: 11.13 ng/ml

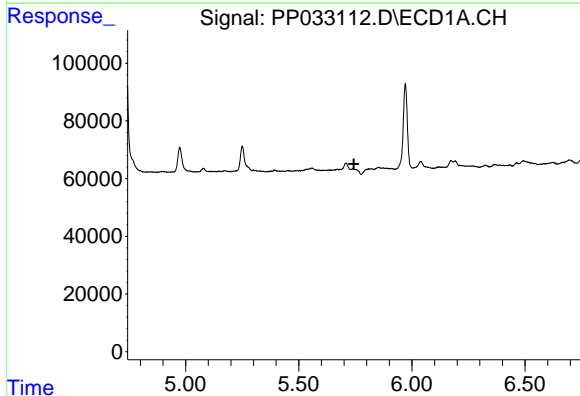


#8 AR-1221-1  
 R.T.: 4.974 min  
 Delta R.T.: -0.007 min  
 Response: 117993  
 Conc: 211.29 ng/ml

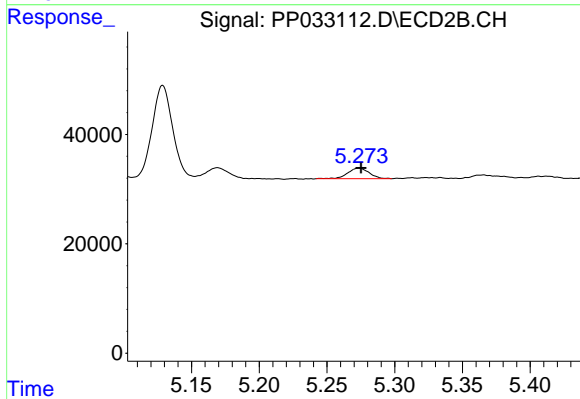
Instrument :  
 ECD\_P  
 ClientSampled :



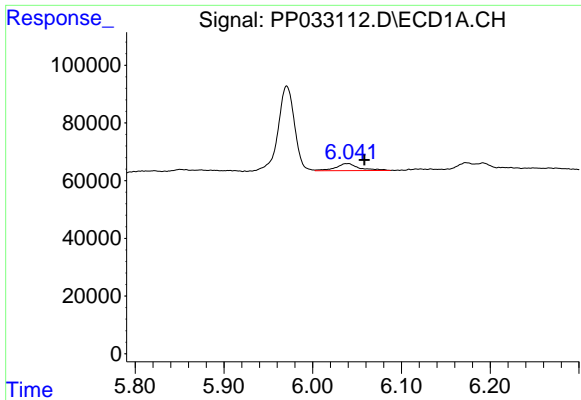
#8 AR-1221-1  
 R.T.: 0.000 min  
 Exp R.T. : 4.261 min  
 Response: 0  
 Conc: N.D.



#12 AR-1232-2  
 R.T.: 0.000 min  
 Exp R.T. : 5.744 min  
 Response: 0  
 Conc: N.D.

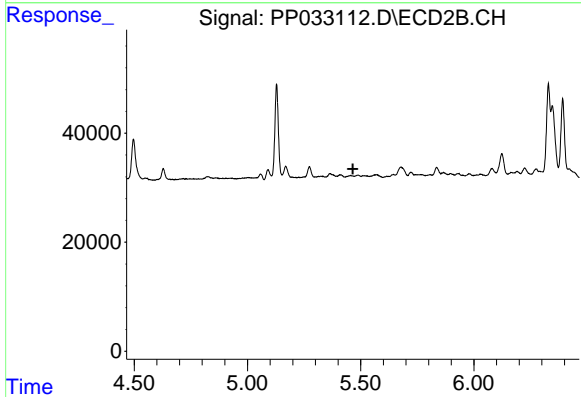


#12 AR-1232-2  
 R.T.: 5.274 min  
 Delta R.T.: -0.001 min  
 Response: 20987  
 Conc: 25.49 ng/ml

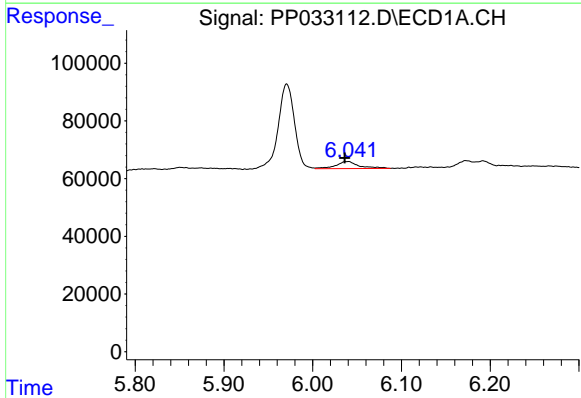


#13 AR-1232-3  
 R.T.: 6.040 min  
 Delta R.T.: -0.019 min  
 Response: 45283  
 Conc: 44.43 ng/ml

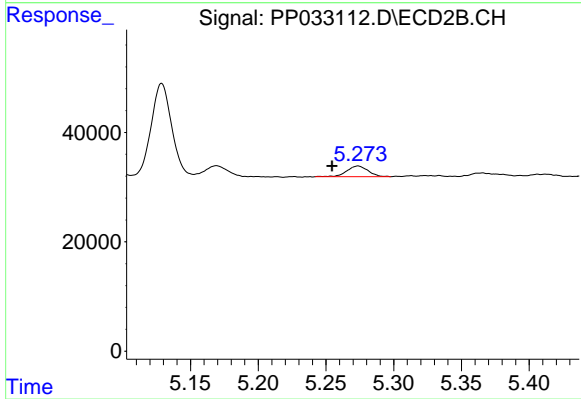
Instrument :  
 ECD\_P  
 ClientSampled :



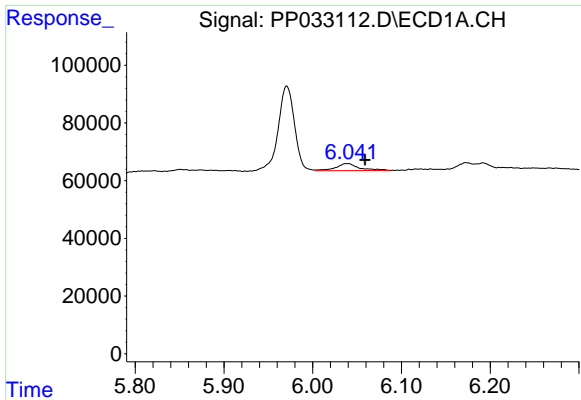
#13 AR-1232-3  
 R.T.: 0.000 min  
 Exp R.T. : 5.466 min  
 Response: 0  
 Conc: N.D.



#16 AR-1242-1  
 R.T.: 6.040 min  
 Delta R.T.: 0.004 min  
 Response: 45283  
 Conc: 36.48 ng/ml



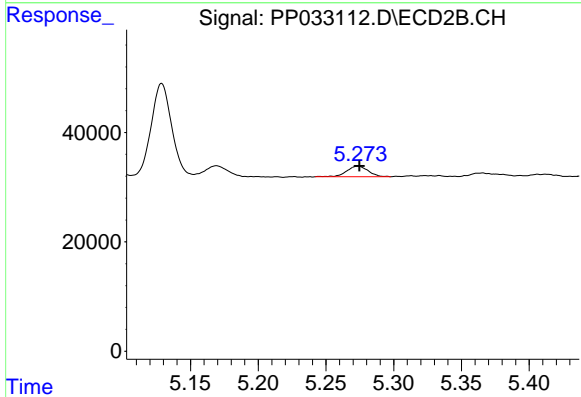
#16 AR-1242-1  
 R.T.: 5.274 min  
 Delta R.T.: 0.019 min  
 Response: 20987  
 Conc: 20.82 ng/ml



#17 AR-1242-2

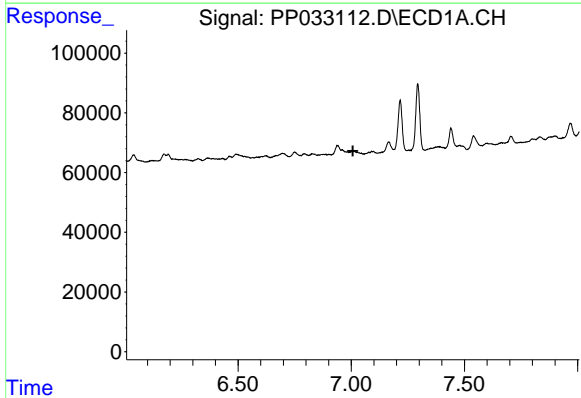
R.T.: 6.040 min  
 Delta R.T.: -0.019 min  
 Response: 45283  
 Conc: 24.39 ng/ml

Instrument :  
 ECD\_P  
 ClientSampled :



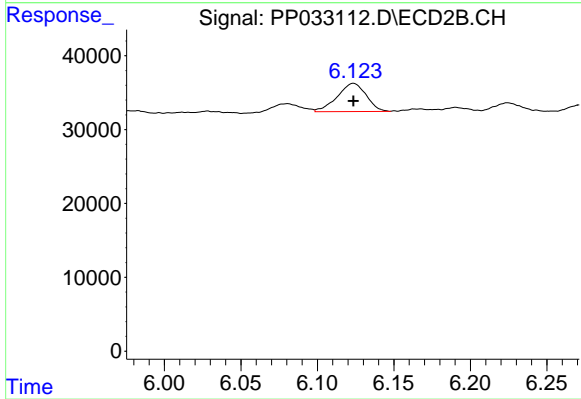
#17 AR-1242-2

R.T.: 5.274 min  
 Delta R.T.: 0.000 min  
 Response: 20987  
 Conc: 14.16 ng/ml



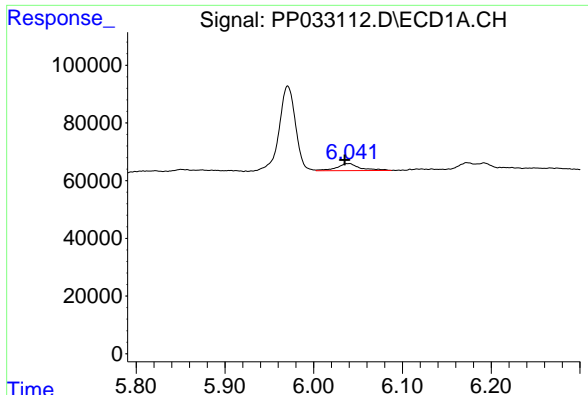
#20 AR-1242-5

R.T.: 0.000 min  
 Exp R.T. : 7.008 min  
 Response: 0  
 Conc: N.D.



#20 AR-1242-5

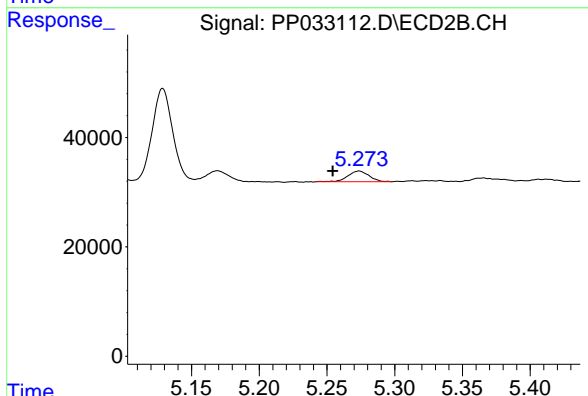
R.T.: 6.124 min  
 Delta R.T.: 0.000 min  
 Response: 50298  
 Conc: 55.50 ng/ml



#21 AR-1248-1

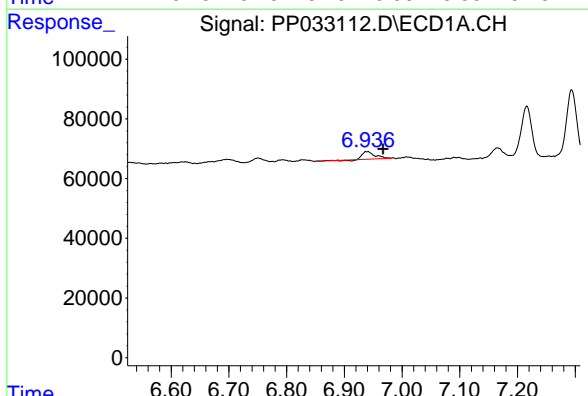
R.T.: 6.040 min  
 Delta R.T.: 0.005 min  
 Response: 45283  
 Conc: 50.88 ng/ml

Instrument :  
 ECD\_P  
 ClientSampleId :



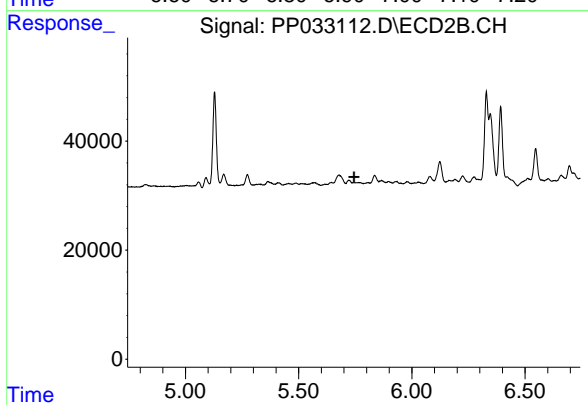
#21 AR-1248-1

R.T.: 5.274 min  
 Delta R.T.: 0.020 min  
 Response: 20987  
 Conc: 28.02 ng/ml



#24 AR-1248-4

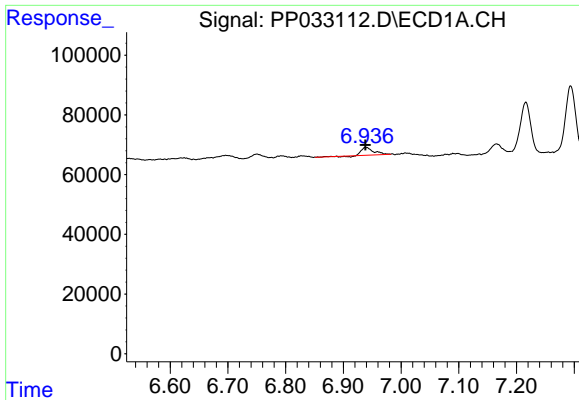
R.T.: 6.941 min  
 Delta R.T.: -0.026 min  
 Response: 35429  
 Conc: 22.52 ng/ml



#24 AR-1248-4

R.T.: 0.000 min  
 Exp R.T. : 5.744 min  
 Response: 0  
 Conc: N.D.

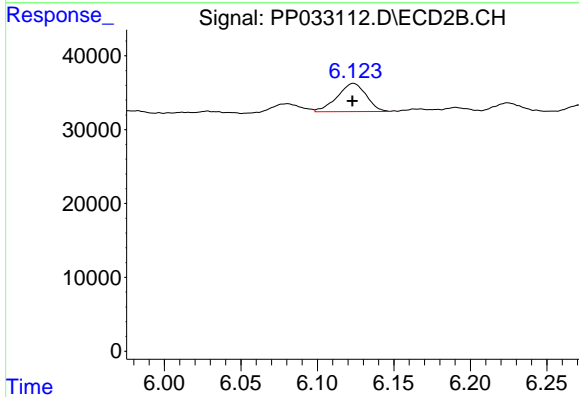




#26 AR-1254-1

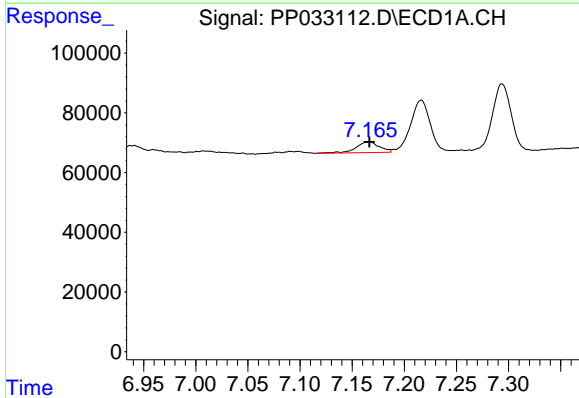
R.T.: 6.941 min  
 Delta R.T.: 0.003 min  
 Response: 35429  
 Conc: 21.03 ng/ml

Instrument :  
 ECD\_P  
 ClientSampleId :



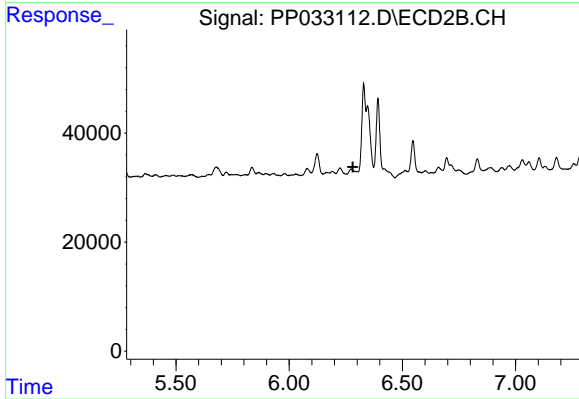
#26 AR-1254-1

R.T.: 6.124 min  
 Delta R.T.: 0.000 min  
 Response: 50298  
 Conc: 25.10 ng/ml



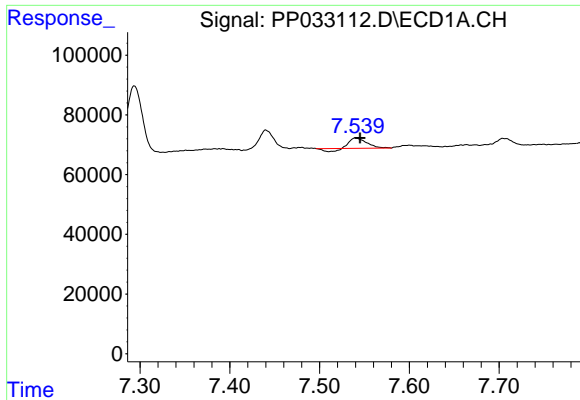
#27 AR-1254-2

R.T.: 7.165 min  
 Delta R.T.: -0.001 min  
 Response: 55573  
 Conc: 21.52 ng/ml



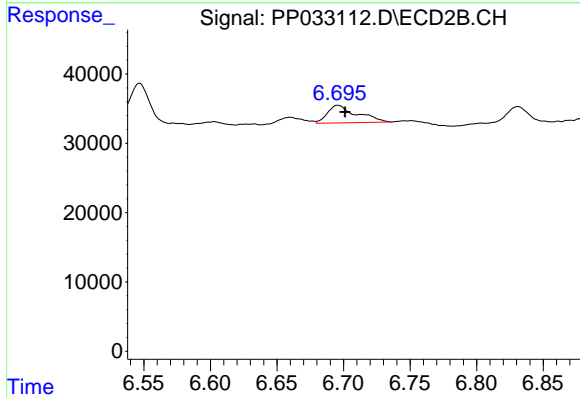
#27 AR-1254-2

R.T.: 0.000 min  
 Exp R.T. : 6.282 min  
 Response: 0  
 Conc: N.D.

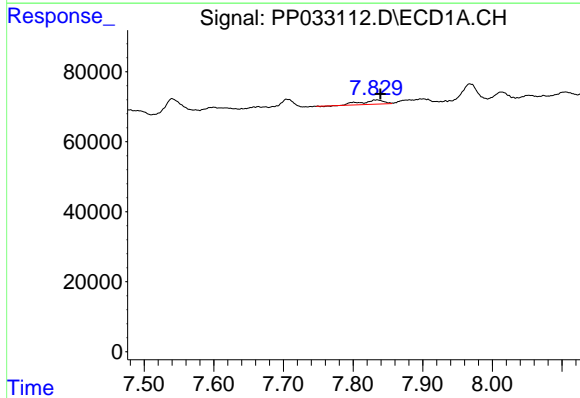


#28 AR-1254-3  
 R.T.: 7.540 min  
 Delta R.T.: -0.005 min  
 Response: 37887  
 Conc: 14.49 ng/ml

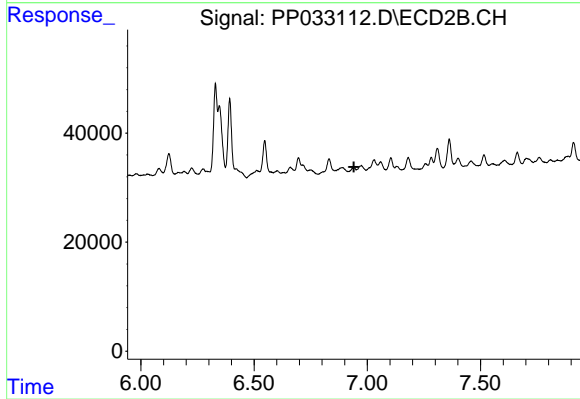
Instrument :  
 ECD\_P  
 ClientSampleId :



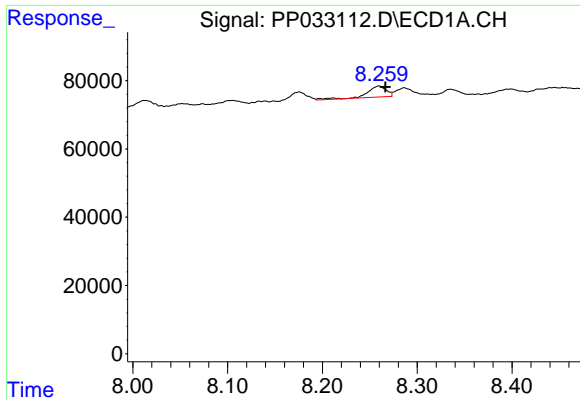
#28 AR-1254-3  
 R.T.: 6.696 min  
 Delta R.T.: -0.005 min  
 Response: 38939  
 Conc: 14.32 ng/ml



#29 AR-1254-4  
 R.T.: 7.834 min  
 Delta R.T.: -0.005 min  
 Response: 26920  
 Conc: 15.26 ng/ml



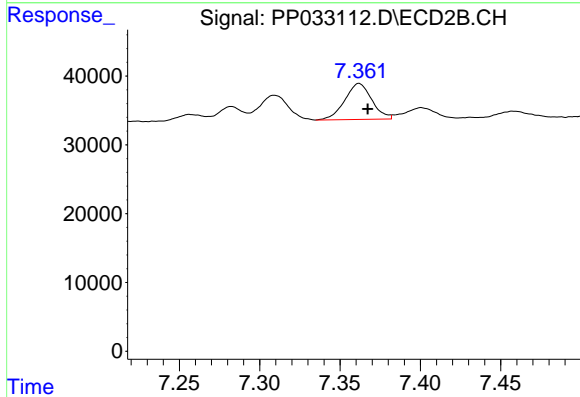
#29 AR-1254-4  
 R.T.: 0.000 min  
 Exp R.T. : 6.941 min  
 Response: 0  
 Conc: N.D.



#30 AR-1254-5

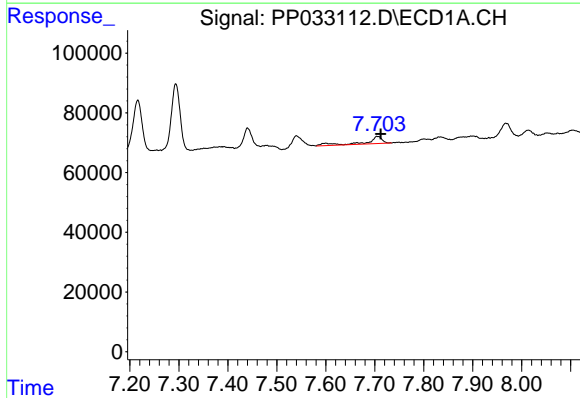
R.T.: 8.260 min  
 Delta R.T.: -0.007 min  
 Response: 45772  
 Conc: 23.12 ng/ml

Instrument :  
 ECD\_P  
 ClientSampleId :



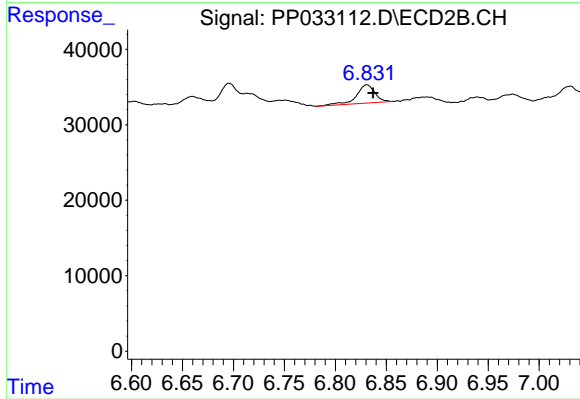
#30 AR-1254-5

R.T.: 7.362 min  
 Delta R.T.: -0.005 min  
 Response: 61082  
 Conc: 27.04 ng/ml



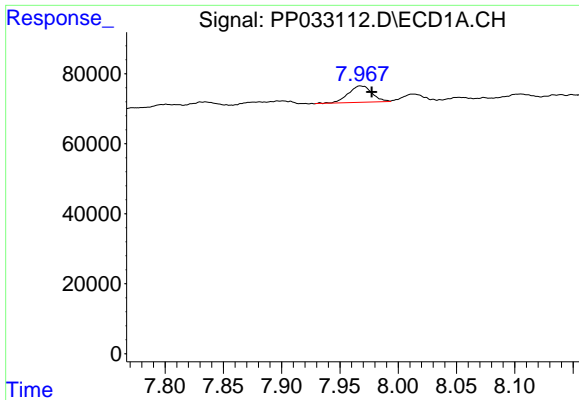
#31 AR-1260-1

R.T.: 7.705 min  
 Delta R.T.: -0.008 min  
 Response: 55807  
 Conc: 30.19 ng/ml



#31 AR-1260-1

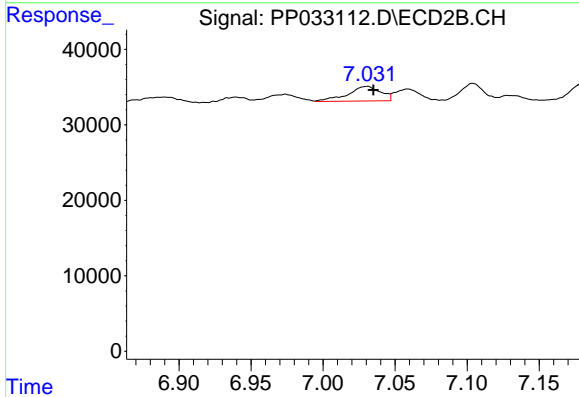
R.T.: 6.831 min  
 Delta R.T.: -0.006 min  
 Response: 30295  
 Conc: 16.75 ng/ml



#32 AR-1260-2

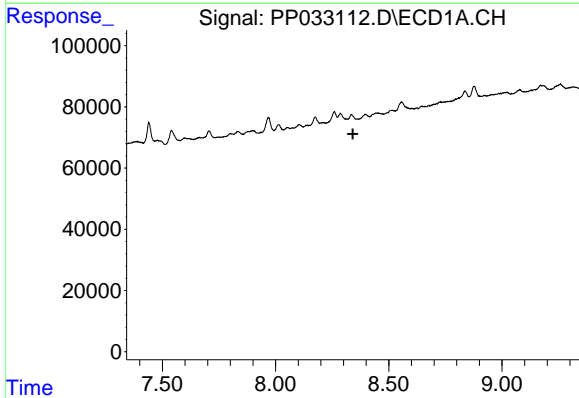
R.T.: 7.968 min  
 Delta R.T.: -0.010 min  
 Response: 66033  
 Conc: 26.97 ng/ml

Instrument :  
 ECD\_P  
 ClientSampleId :



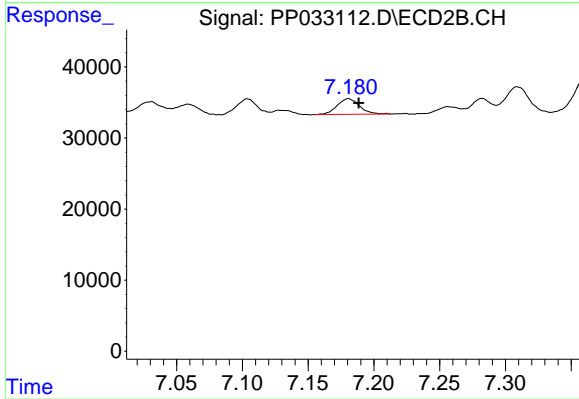
#32 AR-1260-2

R.T.: 7.031 min  
 Delta R.T.: -0.004 min  
 Response: 31130  
 Conc: 15.03 ng/ml



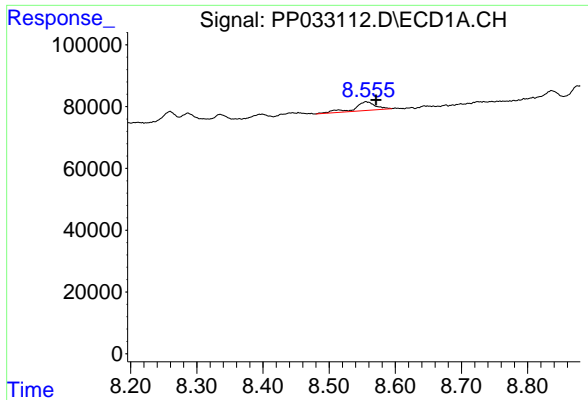
#33 AR-1260-3

R.T.: 0.000 min  
 Exp R.T. : 8.342 min  
 Response: 0  
 Conc: N.D.



#33 AR-1260-3

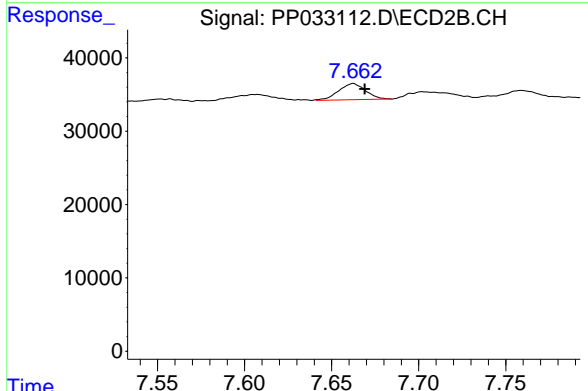
R.T.: 7.181 min  
 Delta R.T.: -0.008 min  
 Response: 25863  
 Conc: 11.96 ng/ml



#34 AR-1260-4

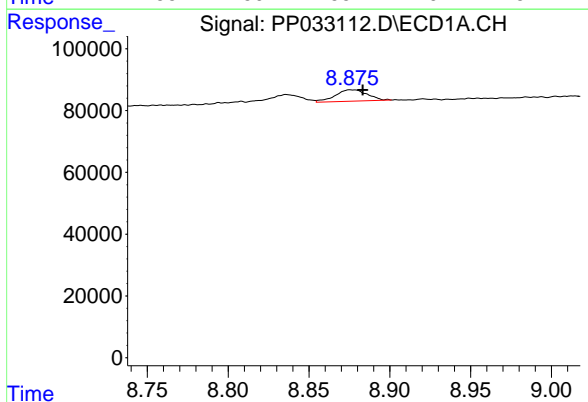
R.T.: 8.556 min  
 Delta R.T.: -0.015 min  
 Response: 63863  
 Conc: 31.28 ng/ml

Instrument :  
 ECD\_P  
 ClientSampleId :



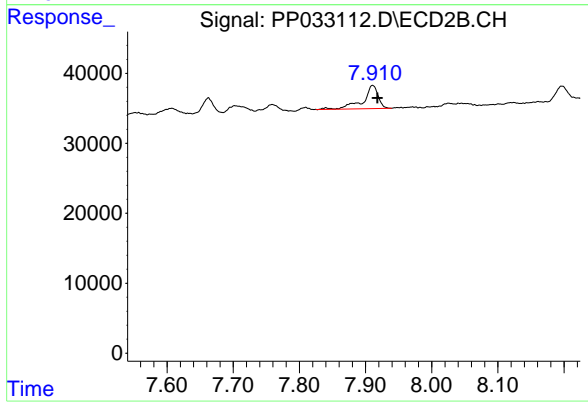
#34 AR-1260-4

R.T.: 7.662 min  
 Delta R.T.: -0.007 min  
 Response: 23660  
 Conc: 13.83 ng/ml



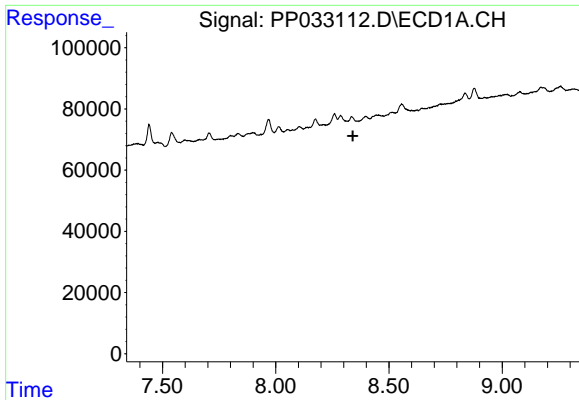
#35 AR-1260-5

R.T.: 8.876 min  
 Delta R.T.: -0.007 min  
 Response: 50379  
 Conc: 11.34 ng/ml



#35 AR-1260-5

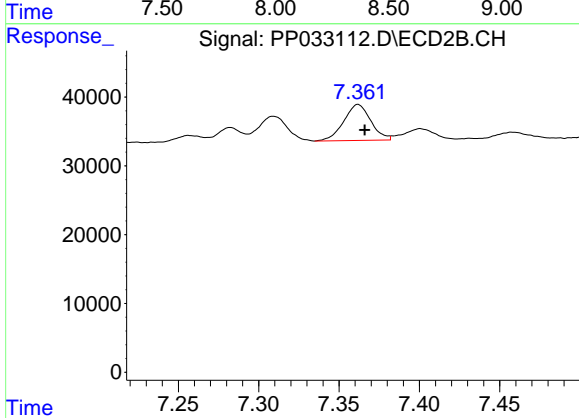
R.T.: 7.911 min  
 Delta R.T.: -0.007 min  
 Response: 52830  
 Conc: 13.75 ng/ml



#36 AR-1262-1

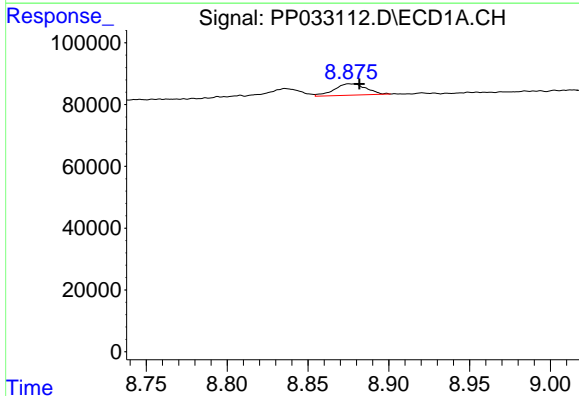
R.T.: 0.000 min  
 Exp R.T.: 8.341 min  
 Response: 0  
 Conc: N.D.

Instrument :  
 ECD\_P  
 ClientSampled :



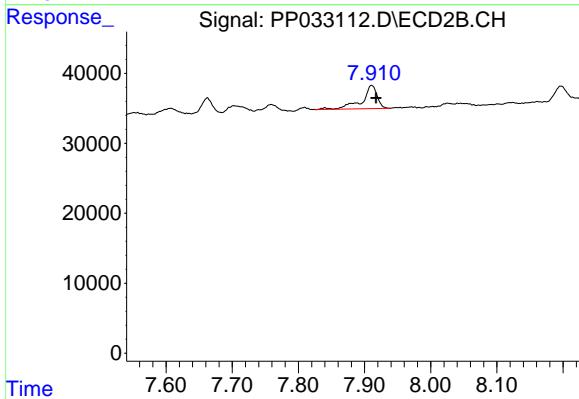
#36 AR-1262-1

R.T.: 7.362 min  
 Delta R.T.: -0.004 min  
 Response: 61082  
 Conc: 51.70 ng/ml



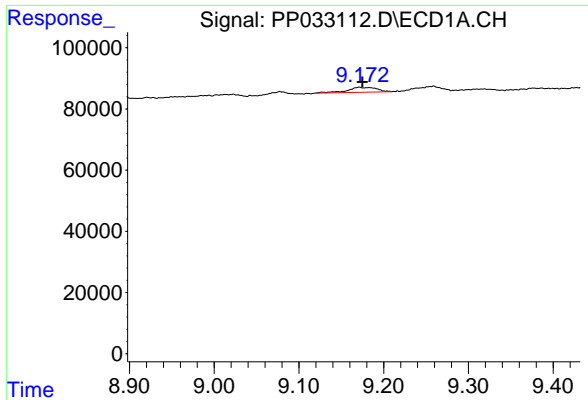
#37 AR-1262-2

R.T.: 8.876 min  
 Delta R.T.: -0.005 min  
 Response: 50379  
 Conc: 10.57 ng/ml



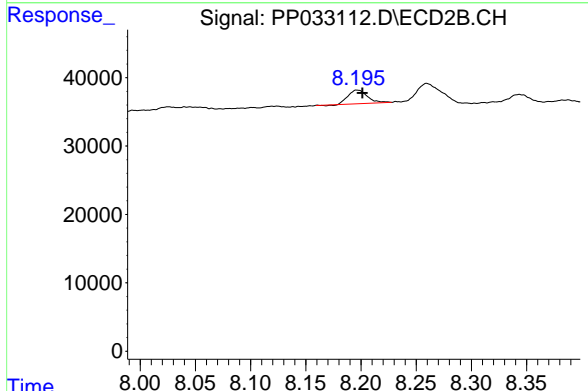
#37 AR-1262-2

R.T.: 7.911 min  
 Delta R.T.: -0.007 min  
 Response: 52830  
 Conc: 13.53 ng/ml

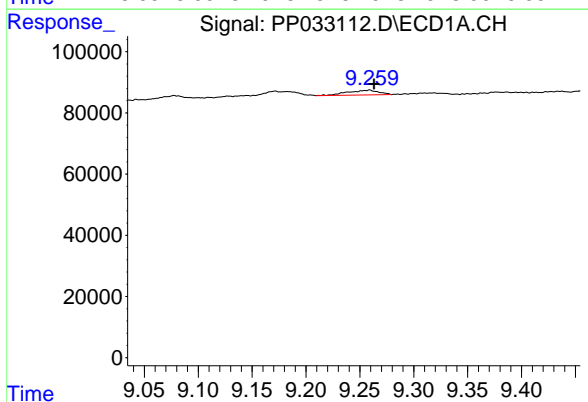


#38 AR-1262-3  
 R.T.: 9.171 min  
 Delta R.T.: -0.004 min  
 Response: 38245  
 Conc: 11.37 ng/ml

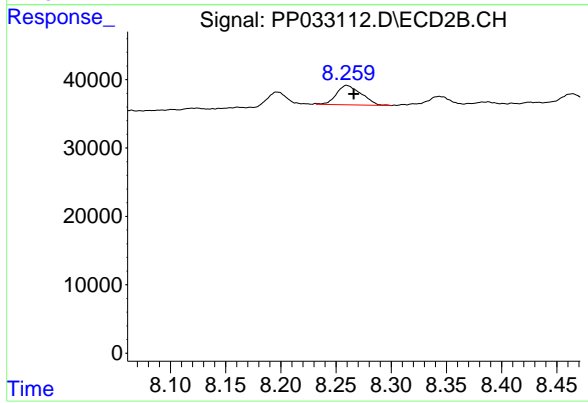
Instrument :  
 ECD\_P  
 ClientSampled :



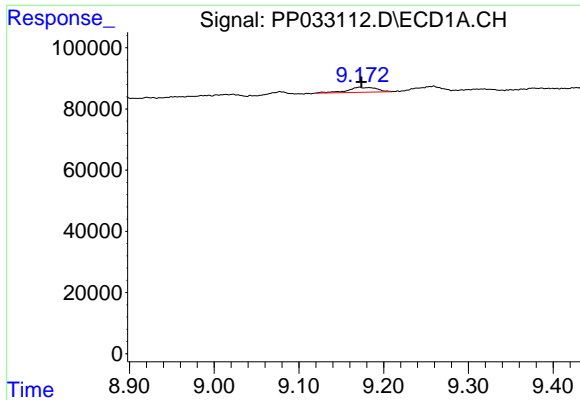
#38 AR-1262-3  
 R.T.: 8.197 min  
 Delta R.T.: -0.005 min  
 Response: 23840  
 Conc: 13.82 ng/ml



#39 AR-1262-4  
 R.T.: 9.259 min  
 Delta R.T.: -0.004 min  
 Response: 31278  
 Conc: 11.26 ng/ml



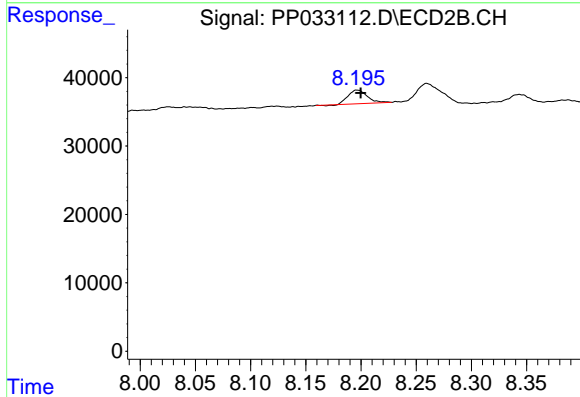
#39 AR-1262-4  
 R.T.: 8.260 min  
 Delta R.T.: -0.006 min  
 Response: 44381  
 Conc: 14.17 ng/ml



#41 AR-1268-1

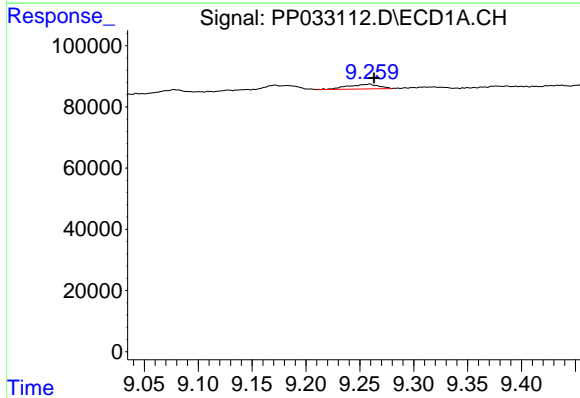
R.T.: 9.171 min  
 Delta R.T.: -0.002 min  
 Response: 38245  
 Conc: 6.19 ng/ml

Instrument :  
 ECD\_P  
 ClientSampled :



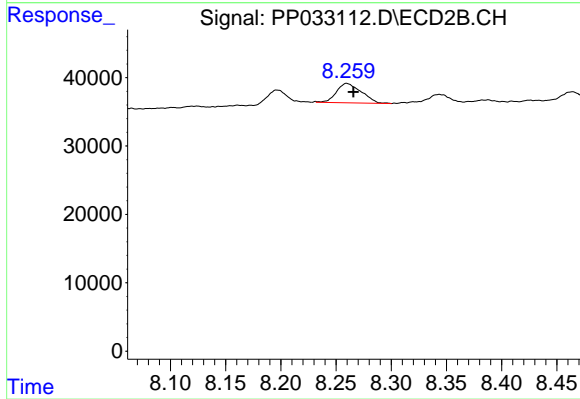
#41 AR-1268-1

R.T.: 8.197 min  
 Delta R.T.: -0.003 min  
 Response: 23840  
 Conc: 5.03 ng/ml



#42 AR-1268-2

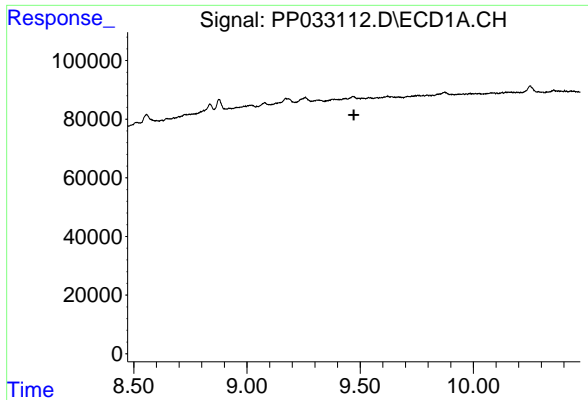
R.T.: 9.259 min  
 Delta R.T.: -0.004 min  
 Response: 31278  
 Conc: 5.59 ng/ml



#42 AR-1268-2

R.T.: 8.260 min  
 Delta R.T.: -0.006 min  
 Response: 44381  
 Conc: 9.89 ng/ml

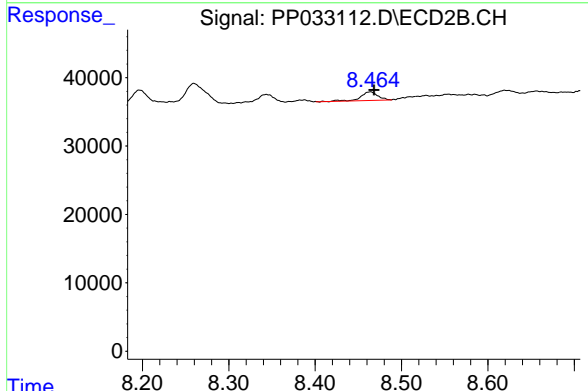




#43 AR-1268-3

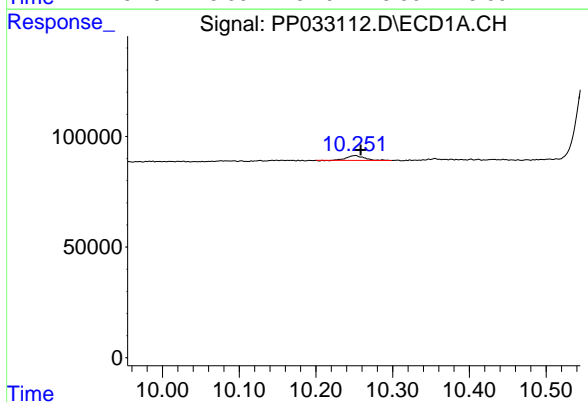
R.T.: 0.000 min  
 Exp R.T.: 9.473 min  
 Response: 0  
 Conc: N.D.

Instrument :  
 ECD\_P  
 ClientSampled :



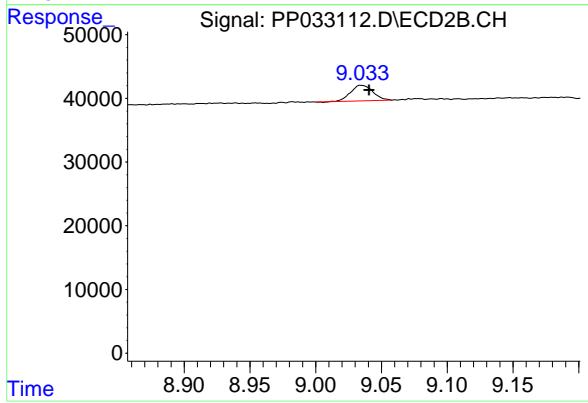
#43 AR-1268-3

R.T.: 8.464 min  
 Delta R.T.: -0.004 min  
 Response: 16958  
 Conc: 4.13 ng/ml



#45 AR-1268-5

R.T.: 10.251 min  
 Delta R.T.: -0.007 min  
 Response: 34093  
 Conc: 2.63 ng/ml



#45 AR-1268-5

R.T.: 9.035 min  
 Delta R.T.: -0.006 min  
 Response: 28613  
 Conc: 2.54 ng/ml