

Data Path : Z:\pestpcbsrv\HPCHEM1\ECD\_P\Data\PP012921\  
 Data File : PP033074.D  
 Signal(s) : Signal #1: ECD1A.CH Signal #2: ECD2B.CH  
 Acq On : 29 Jan 2021 15:55  
 Operator : DD\AJ  
 Sample : PB134397BS  
 Misc :  
 ALS Vial : 15 Sample Multiplier: 1

Instrument :  
 ECD\_P  
 ClientSampleId :  
 PB134397BS

Integration File signal 1: autoint1.e  
 Integration File signal 2: autoint2.e  
 Quant Time: Jan 30 00:25:35 2021  
 Quant Method : Z:\pestpcbsrv\HPCHEM1\ECD\_P\methods\PP012821.M  
 Quant Title : GC EXTRACTABLES  
 QLast Update : Fri Jan 29 04:07:51 2021  
 Response via : Initial Calibration  
 Integrator: ChemStation 6890 Scale Mode: Small noise peaks clipped

Volume Inj. : 2 µl  
 Signal #1 Phase : ZB-MR1 Signal #2 Phase: ZB-MR2  
 Signal #1 Info : 30Mx0.32mmx 0.50µ Signal #2 Info : 30M x 0.32mm x 0.25µm

Compound	RT#1	RT#2	Resp#1	Resp#2	ng/ml	ng/ml
-----						
System Monitoring Compounds						
1) SA Tetrachlo...	4.732	4.005	1155866	890416	20.356	19.369
2) SA Decachlor...	10.559	9.277	884627	797107	24.657	24.258
Target Compounds						
3) L1 AR-1016-1	6.033	5.253	803851	631504	522.119	496.055
4) L1 AR-1016-2	6.056	5.273	1199667	931925	504.575	494.039
5) L1 AR-1016-3	6.121	5.464	753507	513738	517.482	499.883
6) L1 AR-1016-4	6.226	5.515	624528	387580	524.660	492.413
7) L1 AR-1016-5	6.540	5.743	587656	513509	519.822	499.059
31) L7 AR-1260-1	7.709	6.834	1072962	967151	580.497	534.729
32) L7 AR-1260-2	7.973	7.032	1387277	1115554	566.692	538.712
33) L7 AR-1260-3	8.338	7.185	1026842	1110095	481.066	513.502
34) L7 AR-1260-4	8.567	7.666	1038628	812025	508.722	474.707
35) L7 AR-1260-5	8.879	7.914	2222232	1878615	500.413	489.016

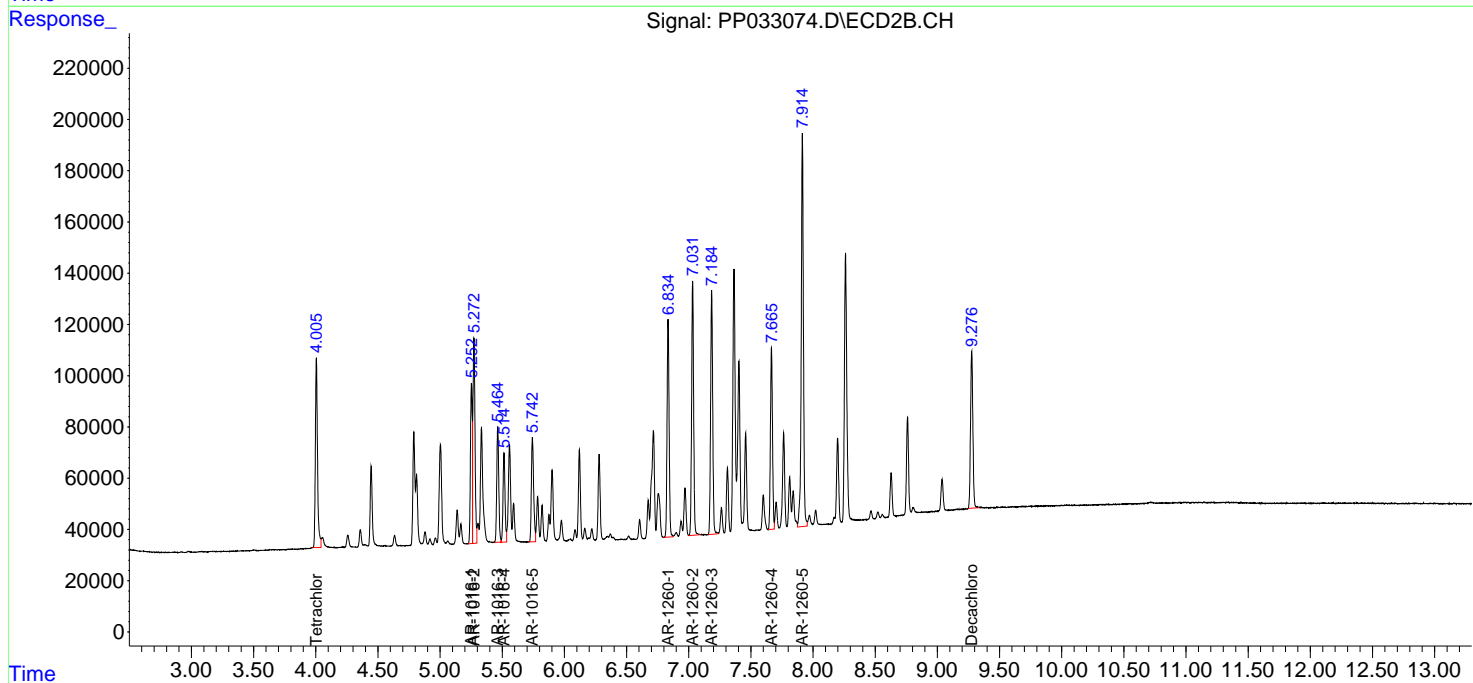
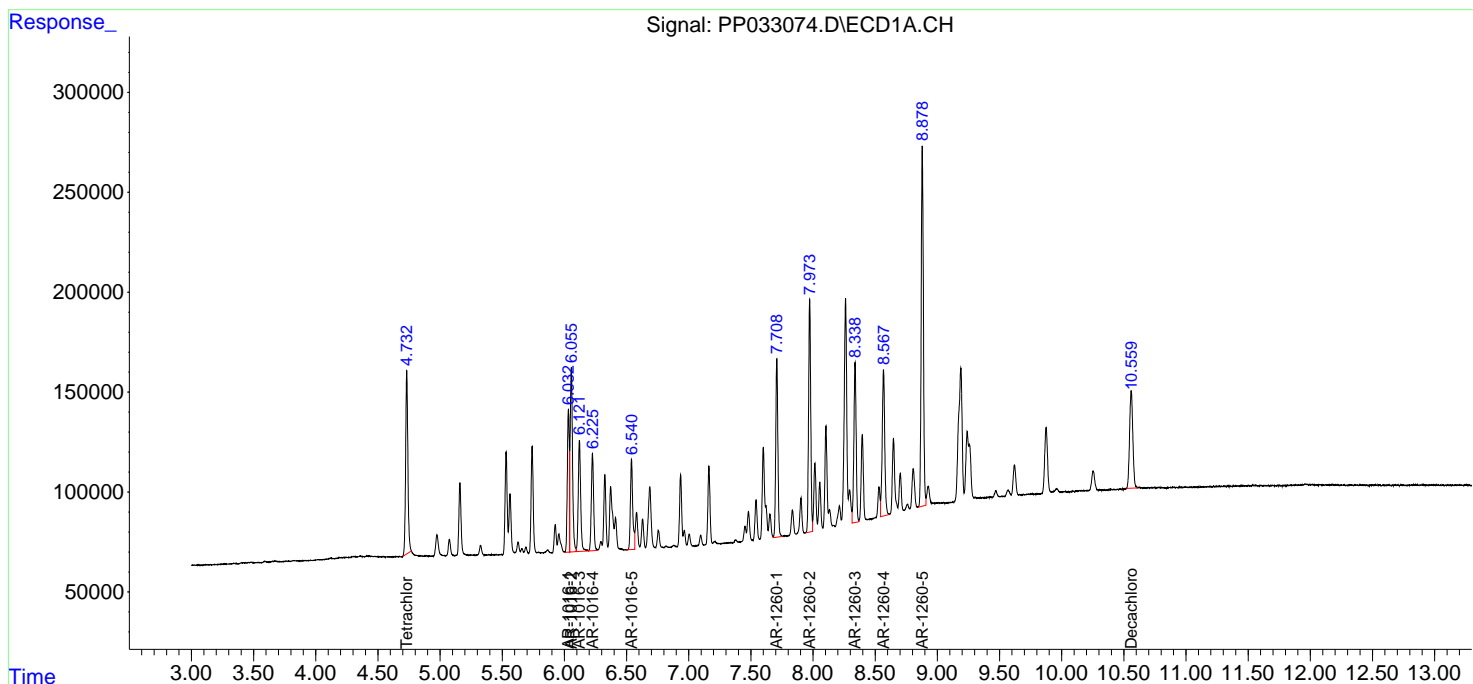
(f)=RT Delta > 1/2 Window (#)=Amounts differ by > 25% (m)=manual int.

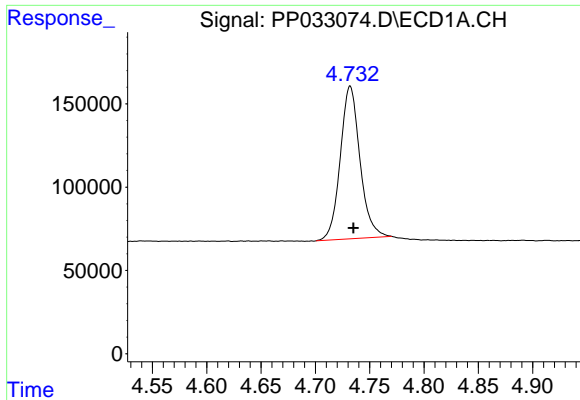
Data Path : Z:\pestpcbsrv\HPCHEM1\ECD\_P\Data\PP012921\  
 Data File : PP033074.D  
 Signal(s) : Signal #1: ECD1A.CH Signal #2: ECD2B.CH  
 Acq On : 29 Jan 2021 15:55  
 Operator : DD\AJ  
 Sample : PB134397BS  
 Misc :  
 ALS Vial : 15 Sample Multiplier: 1

Instrument :  
 ECD\_P  
 ClientSampleID :  
 PB134397BS

Integration File signal 1: autoint1.e  
 Integration File signal 2: autoint2.e  
 Quant Time: Jan 30 00:25:35 2021  
 Quant Method : Z:\pestpcbsrv\HPCHEM1\ECD\_P\methods\PP012821.M  
 Quant Title : GC EXTRACTABLES  
 QLast Update : Fri Jan 29 04:07:51 2021  
 Response via : Initial Calibration  
 Integrator: ChemStation 6890 Scale Mode: Small noise peaks clipped

Volume Inj. : 2 µl  
 Signal #1 Phase : ZB-MR1 Signal #2 Phase: ZB-MR2  
 Signal #1 Info : 30Mx0.32mmx 0.50µ Signal #2 Info : 30M x 0.32mm x 0.25µm

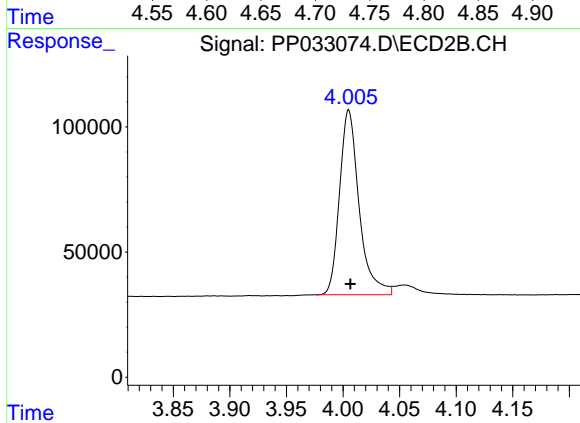




#1 Tetrachloro-m-xylene

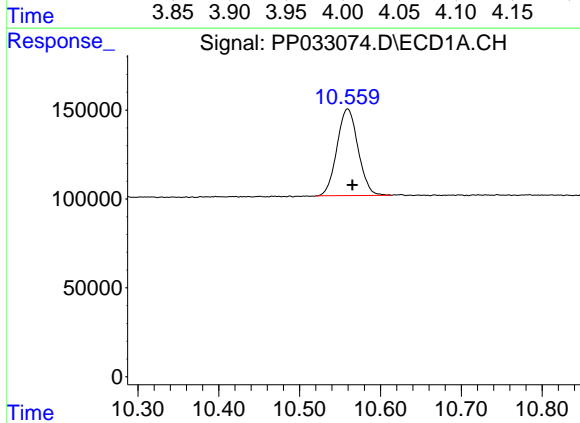
R.T.: 4.732 min  
 Delta R.T.: -0.003 min  
 Response: 1155866  
 Conc: 20.36 ng/ml

Instrument :  
 ECD\_P  
 ClientSampleId :  
 PB134397BS



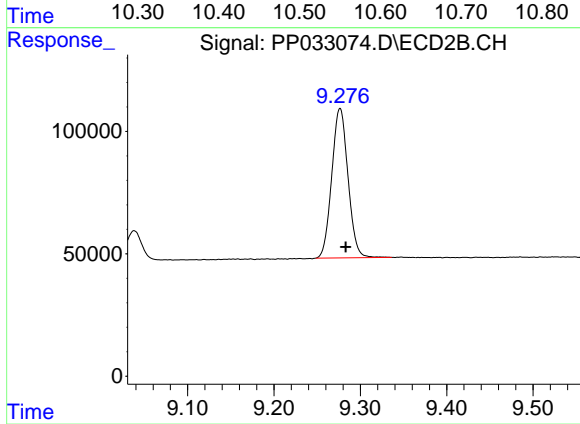
#1 Tetrachloro-m-xylene

R.T.: 4.005 min  
 Delta R.T.: -0.001 min  
 Response: 890416  
 Conc: 19.37 ng/ml



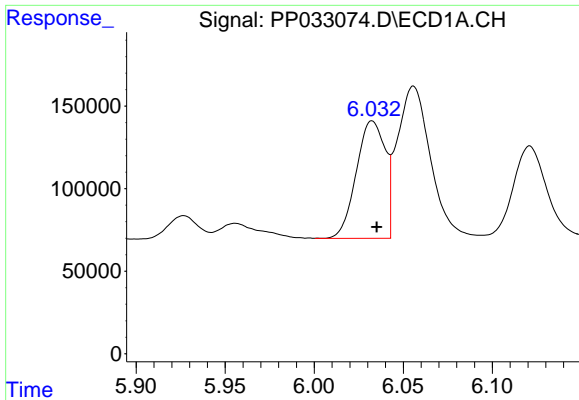
#2 Decachlorobiphenyl

R.T.: 10.559 min  
 Delta R.T.: -0.006 min  
 Response: 884627  
 Conc: 24.66 ng/ml



#2 Decachlorobiphenyl

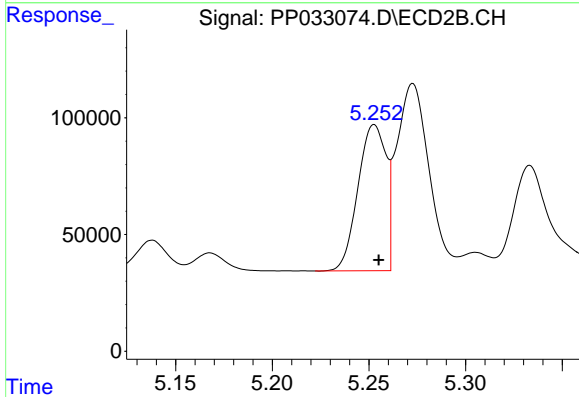
R.T.: 9.277 min  
 Delta R.T.: -0.007 min  
 Response: 797107  
 Conc: 24.26 ng/ml



#3 AR-1016-1

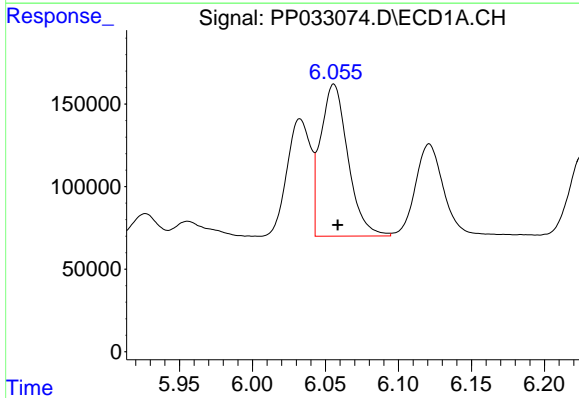
R.T.: 6.033 min  
 Delta R.T.: -0.003 min  
 Response: 803851  
 Conc: 522.12 ng/ml

Instrument :  
 ECD\_P  
 ClientSampleId :  
 PB134397BS



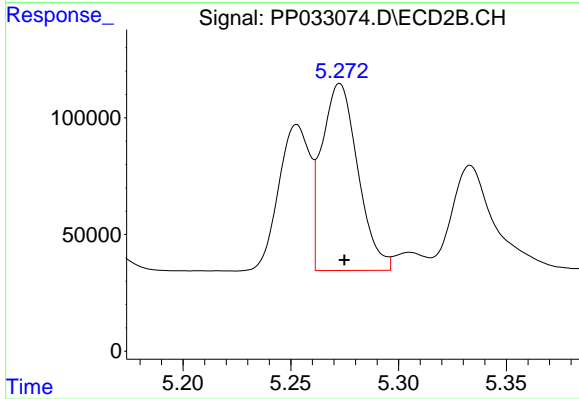
#3 AR-1016-1

R.T.: 5.253 min  
 Delta R.T.: -0.002 min  
 Response: 631504  
 Conc: 496.06 ng/ml



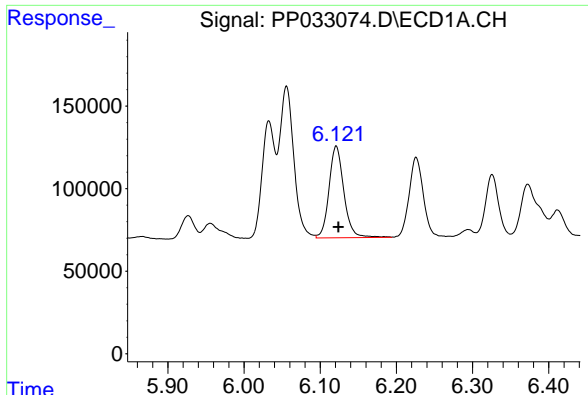
#4 AR-1016-2

R.T.: 6.056 min  
 Delta R.T.: -0.003 min  
 Response: 1199667  
 Conc: 504.58 ng/ml



#4 AR-1016-2

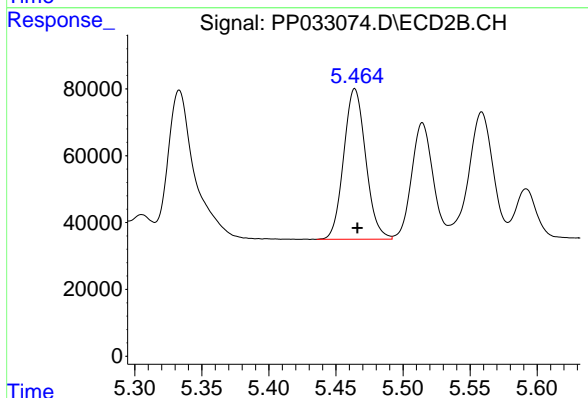
R.T.: 5.273 min  
 Delta R.T.: -0.002 min  
 Response: 931925  
 Conc: 494.04 ng/ml



#5 AR-1016-3

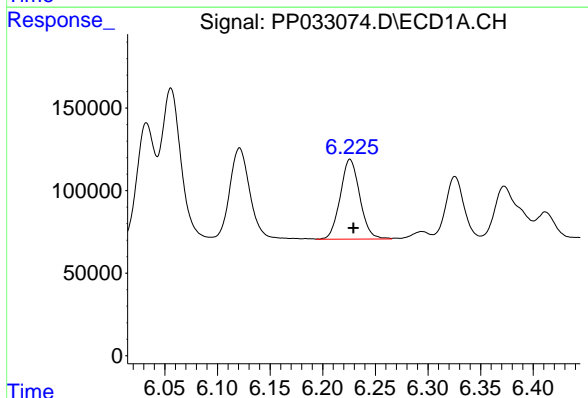
R.T.: 6.121 min  
 Delta R.T.: -0.003 min  
 Response: 753507  
 Conc: 517.48 ng/ml

Instrument :  
 ECD\_P  
 ClientSampleId :  
 PB134397BS



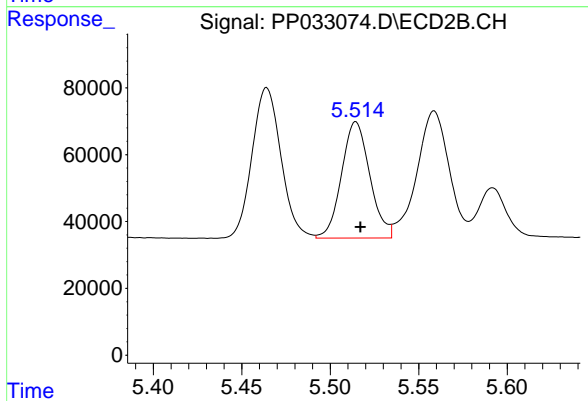
#5 AR-1016-3

R.T.: 5.464 min  
 Delta R.T.: -0.002 min  
 Response: 513738  
 Conc: 499.88 ng/ml



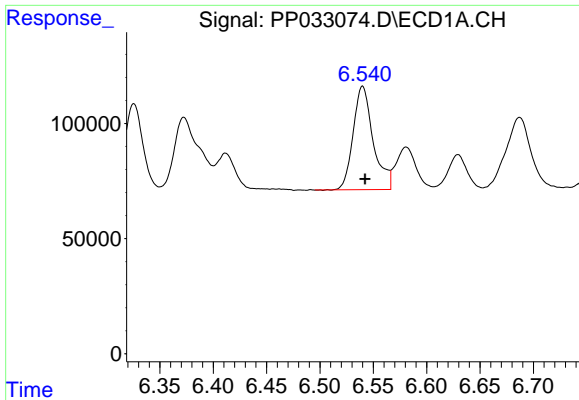
#6 AR-1016-4

R.T.: 6.226 min  
 Delta R.T.: -0.003 min  
 Response: 624528  
 Conc: 524.66 ng/ml



#6 AR-1016-4

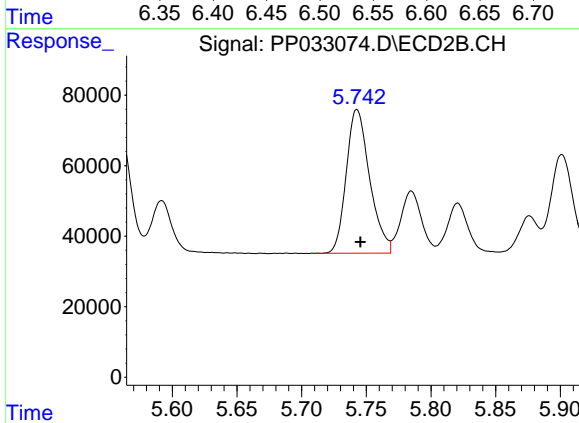
R.T.: 5.515 min  
 Delta R.T.: -0.003 min  
 Response: 387580  
 Conc: 492.41 ng/ml



#7 AR-1016-5

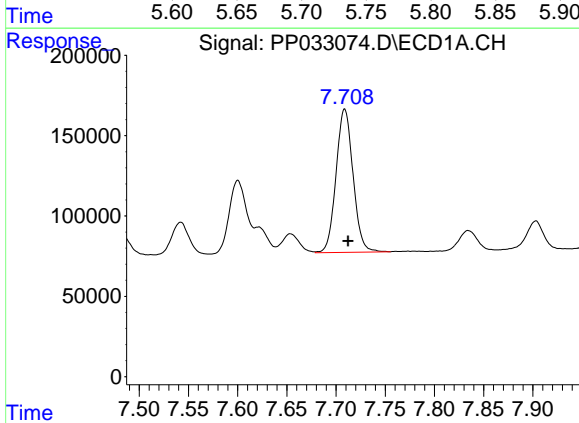
R.T.: 6.540 min  
 Delta R.T.: -0.002 min  
 Response: 587656  
 Conc: 519.82 ng/ml

Instrument :  
 ECD\_P  
 ClientSampled :  
 PB134397BS



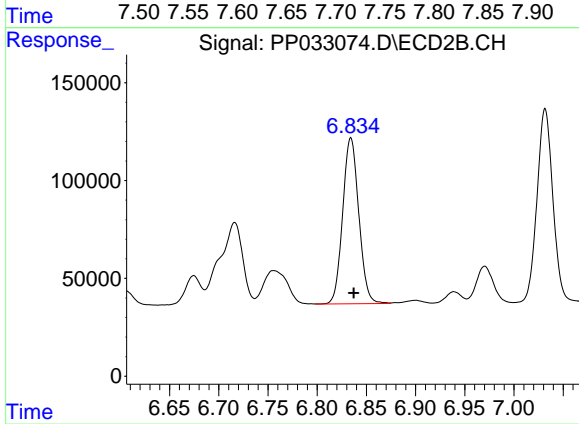
#7 AR-1016-5

R.T.: 5.743 min  
 Delta R.T.: -0.003 min  
 Response: 513509  
 Conc: 499.06 ng/ml



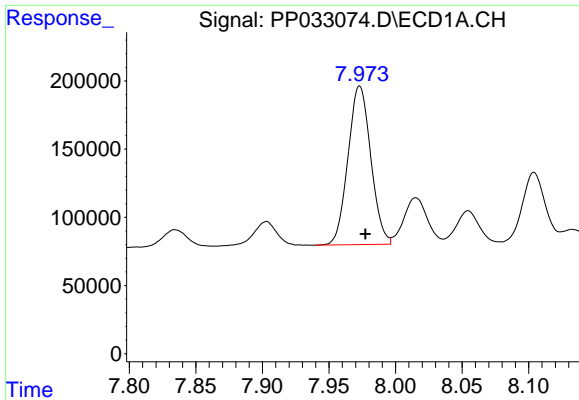
#31 AR-1260-1

R.T.: 7.709 min  
 Delta R.T.: -0.003 min  
 Response: 1072962  
 Conc: 580.50 ng/ml



#31 AR-1260-1

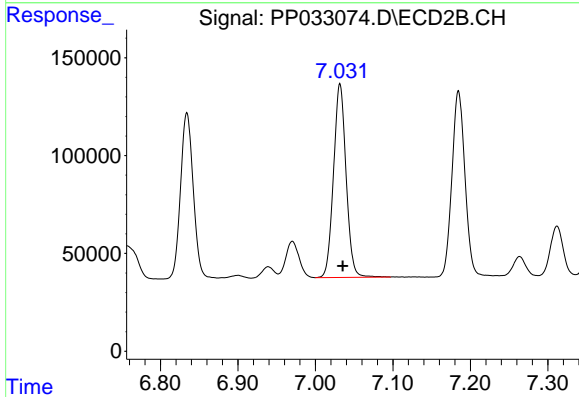
R.T.: 6.834 min  
 Delta R.T.: -0.003 min  
 Response: 967151  
 Conc: 534.73 ng/ml



#32 AR-1260-2

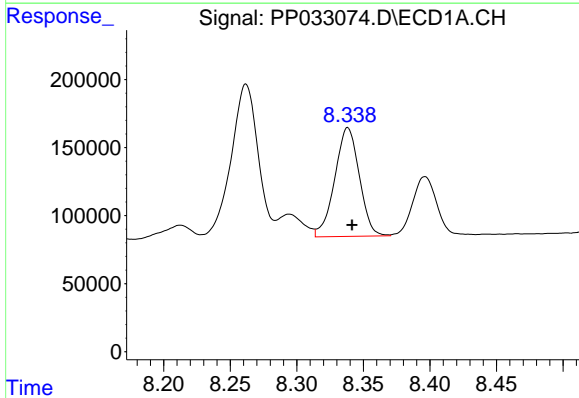
R.T.: 7.973 min  
 Delta R.T.: -0.004 min  
 Response: 1387277  
 Conc: 566.69 ng/ml

Instrument :  
 ECD\_P  
 ClientSampled :  
 PB134397BS



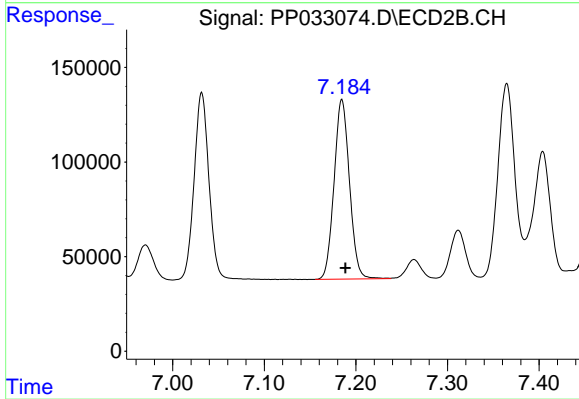
#32 AR-1260-2

R.T.: 7.032 min  
 Delta R.T.: -0.003 min  
 Response: 1115554  
 Conc: 538.71 ng/ml



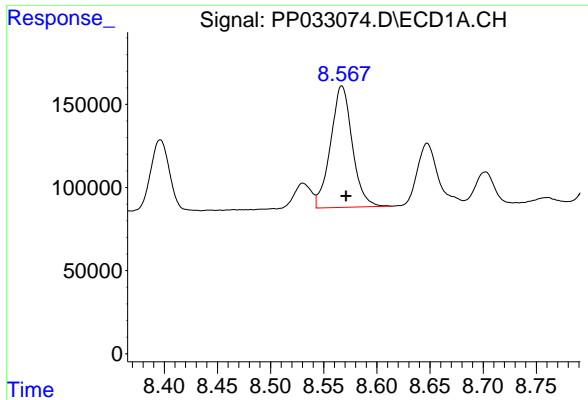
#33 AR-1260-3

R.T.: 8.338 min  
 Delta R.T.: -0.003 min  
 Response: 1026842  
 Conc: 481.07 ng/ml



#33 AR-1260-3

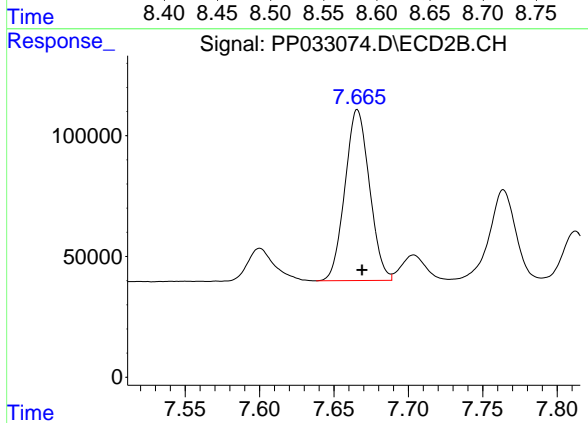
R.T.: 7.185 min  
 Delta R.T.: -0.004 min  
 Response: 1110095  
 Conc: 513.50 ng/ml



#34 AR-1260-4

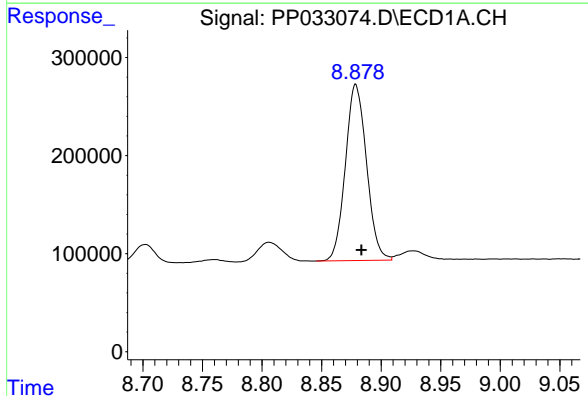
R.T.: 8.567 min  
 Delta R.T.: -0.004 min  
 Response: 1038628  
 Conc: 508.72 ng/ml

Instrument :  
 ECD\_P  
 ClientSampleId :  
 PB134397BS



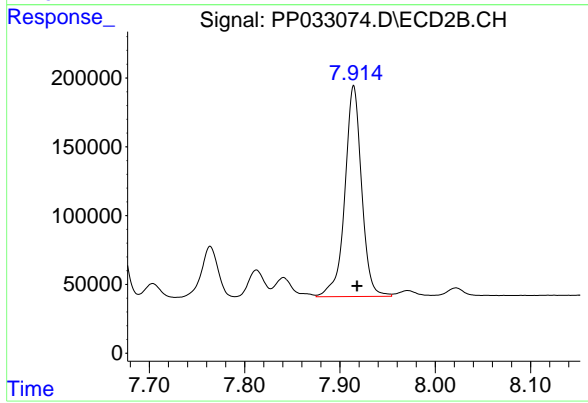
#34 AR-1260-4

R.T.: 7.666 min  
 Delta R.T.: -0.003 min  
 Response: 812025  
 Conc: 474.71 ng/ml



#35 AR-1260-5

R.T.: 8.879 min  
 Delta R.T.: -0.005 min  
 Response: 2222232  
 Conc: 500.41 ng/ml



#35 AR-1260-5

R.T.: 7.914 min  
 Delta R.T.: -0.003 min  
 Response: 1878615  
 Conc: 489.02 ng/ml