

Data Path : Z:\pestpcbsrv\HPCHEM1\ECD_P\Data\PP012921\
 Data File : PP033088.D
 Signal(s) : Signal #1: ECD1A.CH Signal #2: ECD2B.CH
 Acq On : 29 Jan 2021 19:48
 Operator : DD\AJ
 Sample : M1281-03
 Misc :
 ALS Vial : 29 Sample Multiplier: 1

Instrument :
 ECD_P
ClientSampled :
 S21-04-E

Manual Integrations
APPROVED
 Ankita
 2/3/2021 4:33:50 PM

Integration File signal 1: autoint1.e
 Integration File signal 2: autoint2.e
 Quant Time: Jan 30 00:28:57 2021
 Quant Method : Z:\pestpcbsrv\HPCHEM1\ECD_P\methods\PP012821.M
 Quant Title : GC EXTRACTABLES
 QLast Update : Fri Jan 29 04:07:51 2021
 Response via : Initial Calibration
 Integrator: ChemStation 6890 Scale Mode: Small noise peaks clipped

Volume Inj. : 2 µl
 Signal #1 Phase : ZB-MR1 Signal #2 Phase: ZB-MR2
 Signal #1 Info : 30Mx0.32mmx 0.50µ Signal #2 Info : 30M x 0.32mm x 0.25µm

Compound	RT#1	RT#2	Resp#1	Resp#2	ng/ml	ng/ml

System Monitoring Compounds						
1) SA Tetrachlo...	4.732	4.006	936458	770863	16.492	16.769
2) SA Decachlor...	10.560	9.278	1176071	1037002	32.780	31.559
Target Compounds						
26) L6 AR-1254-1	6.936	6.122	20902	19245	12.406m	9.602
27) L6 AR-1254-2	7.163	6.280	59790	46657	23.156	27.308
28) L6 AR-1254-3	7.541	6.700	84354	105466	32.270	38.793
29) L6 AR-1254-4	7.835	6.939	82636	76127	46.836	53.368
30) L6 AR-1254-5	8.262	7.365	376229	365705	190.037	161.919
41) L9 AR-1268-1	9.171	8.199	2976803	2174744	481.481	458.947
42) L9 AR-1268-2	9.261	8.265	1734049	1435060	310.030	319.942
43) L9 AR-1268-3	9.470	8.467	2331411	1838437	450.371	447.256
44) L9 AR-1268-4	9.874	8.761	398344	361121	251.212	263.525
45) L9 AR-1268-5	10.255	9.040	6165910	5289787	475.912	469.043

(f)=RT Delta > 1/2 Window (#)=Amounts differ by > 25% (m)=manual int.

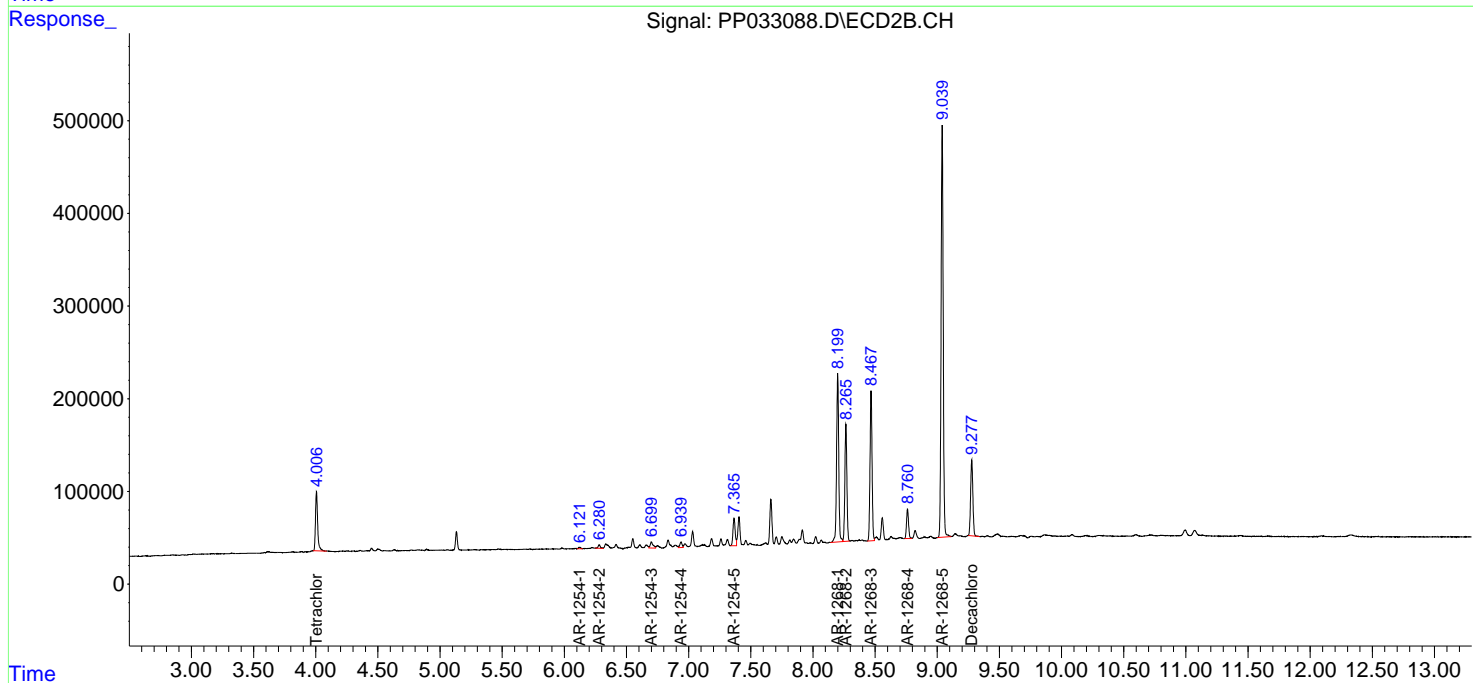
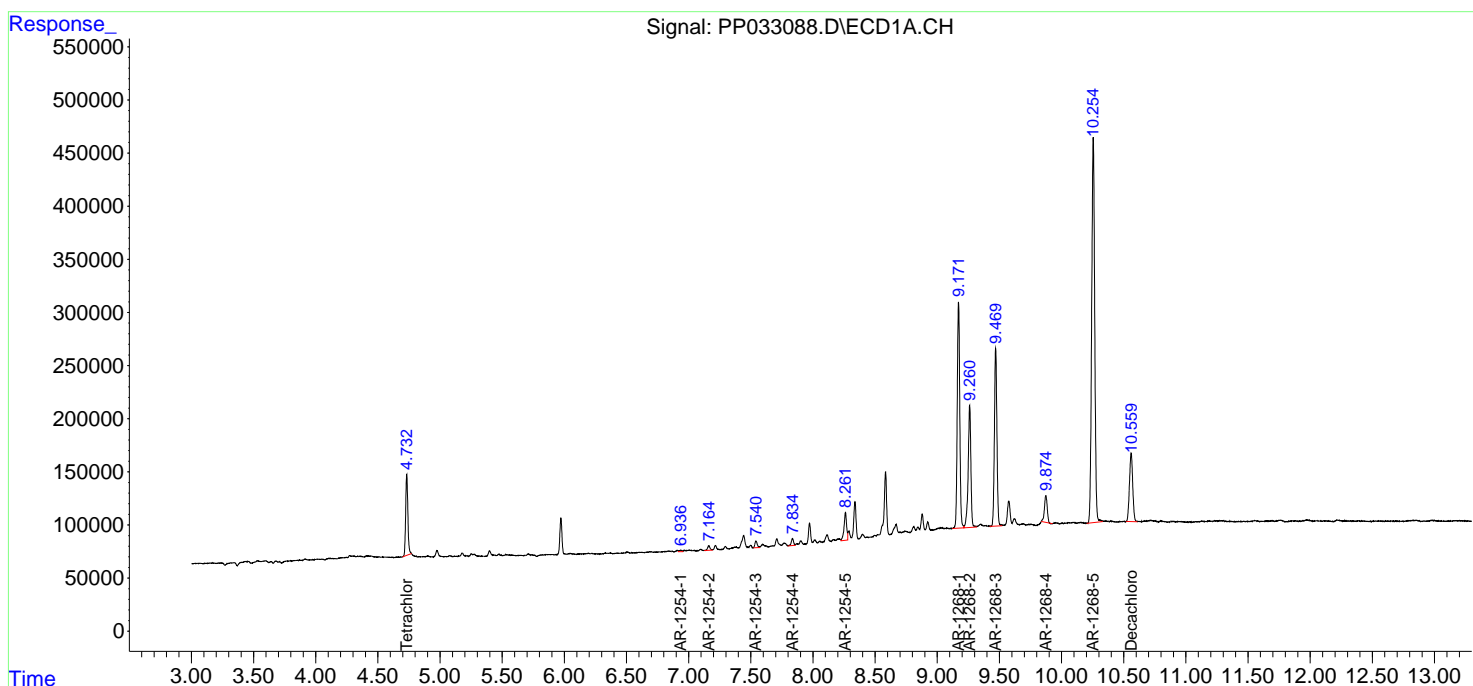
Data Path : Z:\pestpcbsrv\HPCHEM1\ECD_P\Data\PP012921\
 Data File : PP033088.D
 Signal(s) : Signal #1: ECD1A.CH Signal #2: ECD2B.CH
 Acq On : 29 Jan 2021 19:48
 Operator : DD\AJ
 Sample : M1281-03
 Misc :
 ALS Vial : 29 Sample Multiplier: 1

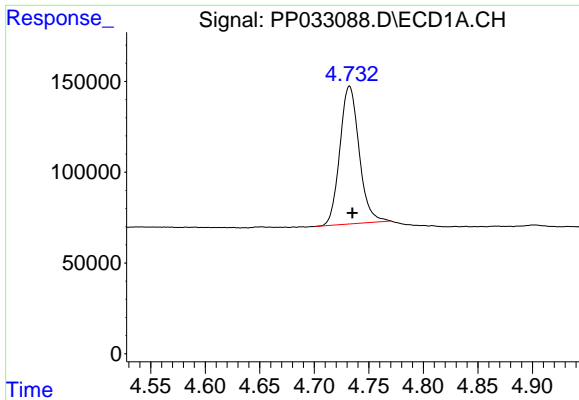
Instrument :
 ECD_P
 ClientSampled :
 S21-04-E

Manual Integrations
APPROVED
 Ankita
 2/3/2021 4:33:50 PM

Integration File signal 1: autoint1.e
 Integration File signal 2: autoint2.e
 Quant Time: Jan 30 00:28:57 2021
 Quant Method : Z:\pestpcbsrv\HPCHEM1\ECD_P\methods\PP012821.M
 Quant Title : GC EXTRACTABLES
 QLast Update : Fri Jan 29 04:07:51 2021
 Response via : Initial Calibration
 Integrator: ChemStation 6890 Scale Mode: Small noise peaks clipped

Volume Inj. : 2 µl
 Signal #1 Phase : ZB-MR1 Signal #2 Phase: ZB-MR2
 Signal #1 Info : 30Mx0.32mmx 0.50µ Signal #2 Info : 30M x 0.32mm x 0.25µm

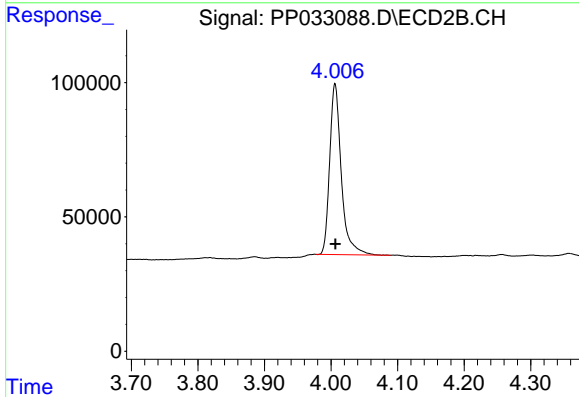




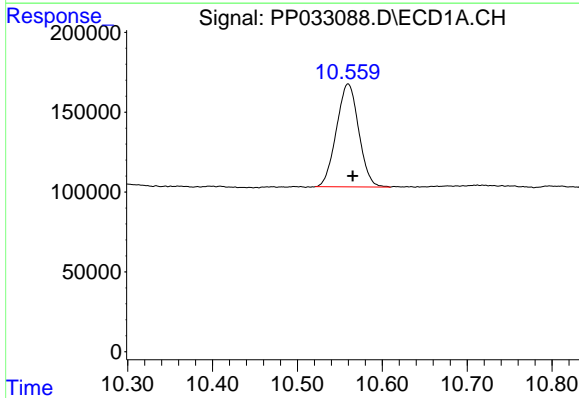
#1 Tetrachloro-m-xylene
 R.T.: 4.732 min
 Delta R.T.: -0.003 min
 Response: 936458
 Conc: 16.49 ng/ml

Instrument :
 ECD_P
 ClientSampled :
 S21-04-E

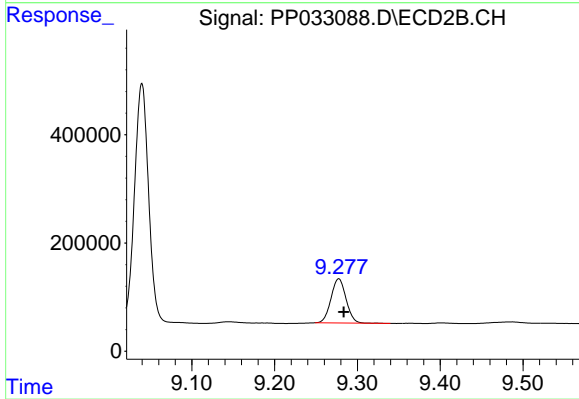
Manual Integrations
APPROVED
 Ankita
 2/3/2021 4:33:50 PM



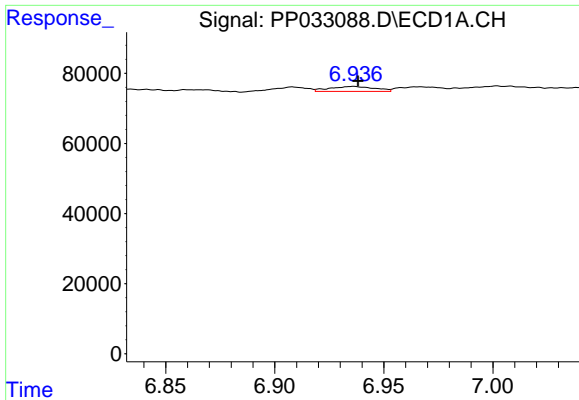
#1 Tetrachloro-m-xylene
 R.T.: 4.006 min
 Delta R.T.: 0.000 min
 Response: 770863
 Conc: 16.77 ng/ml



#2 Decachlorobiphenyl
 R.T.: 10.560 min
 Delta R.T.: -0.005 min
 Response: 1176071
 Conc: 32.78 ng/ml



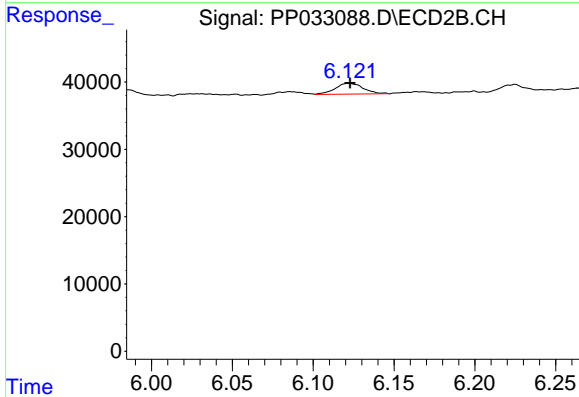
#2 Decachlorobiphenyl
 R.T.: 9.278 min
 Delta R.T.: -0.006 min
 Response: 1037002
 Conc: 31.56 ng/ml



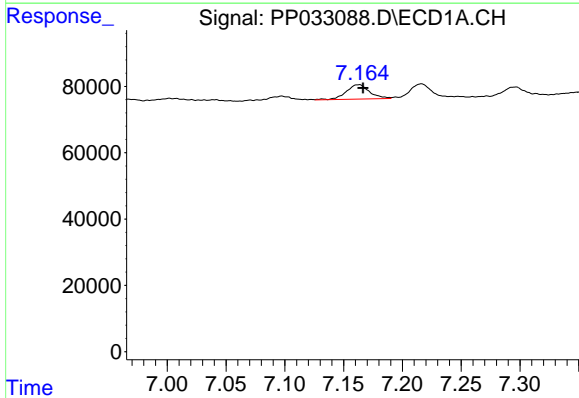
#26 AR-1254-1
 R.T.: 6.936 min
 Delta R.T.: -0.002 min
 Response: 20902
 Conc: 12.41 ng/ml m

Instrument :
 ECD_P
ClientSampled :
 S21-04-E

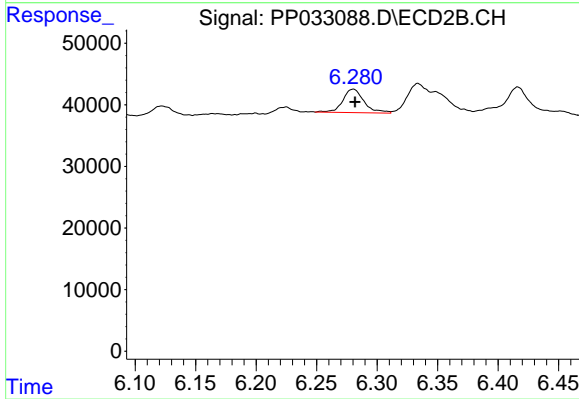
Manual Integrations
APPROVED
 Ankita
 2/3/2021 4:33:50 PM



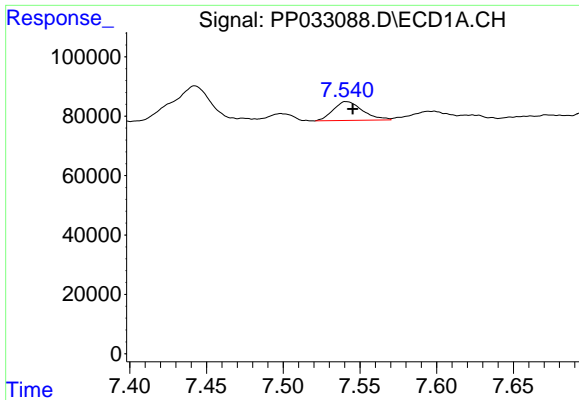
#26 AR-1254-1
 R.T.: 6.122 min
 Delta R.T.: 0.000 min
 Response: 19245
 Conc: 9.60 ng/ml



#27 AR-1254-2
 R.T.: 7.163 min
 Delta R.T.: -0.004 min
 Response: 59790
 Conc: 23.16 ng/ml



#27 AR-1254-2
 R.T.: 6.280 min
 Delta R.T.: -0.001 min
 Response: 46657
 Conc: 27.31 ng/ml

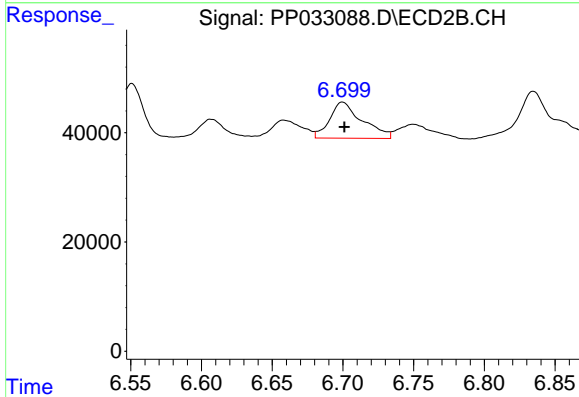


#28 AR-1254-3

R.T.: 7.541 min
 Delta R.T.: -0.004 min
 Response: 84354
 Conc: 32.27 ng/ml

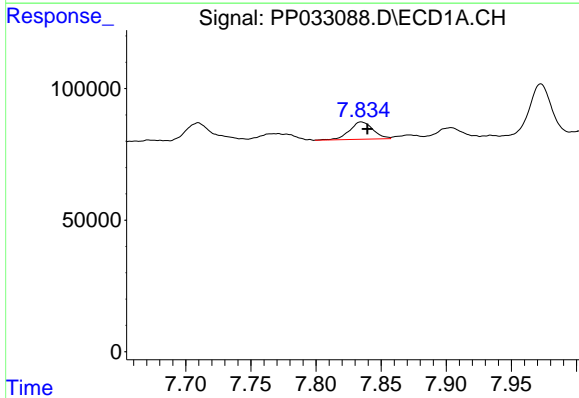
Instrument :
 ECD_P
ClientSampled :
 S21-04-E

Manual Integrations
APPROVED
 Ankita
 2/3/2021 4:33:50 PM



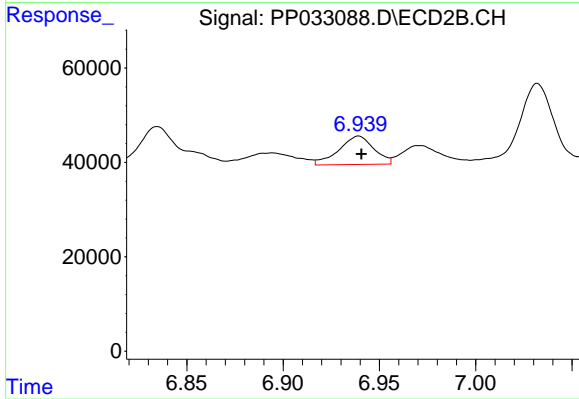
#28 AR-1254-3

R.T.: 6.700 min
 Delta R.T.: -0.001 min
 Response: 105466
 Conc: 38.79 ng/ml



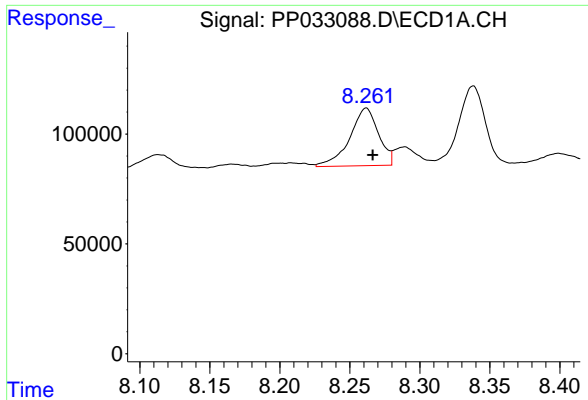
#29 AR-1254-4

R.T.: 7.835 min
 Delta R.T.: -0.005 min
 Response: 82636
 Conc: 46.84 ng/ml



#29 AR-1254-4

R.T.: 6.939 min
 Delta R.T.: -0.001 min
 Response: 76127
 Conc: 53.37 ng/ml

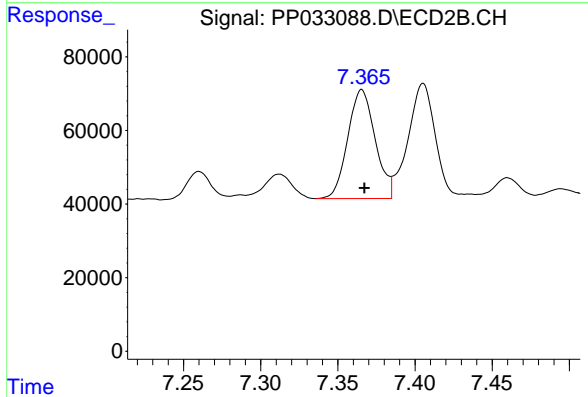


#30 AR-1254-5

R.T.: 8.262 min
 Delta R.T.: -0.005 min
 Response: 376229
 Conc: 190.04 ng/ml

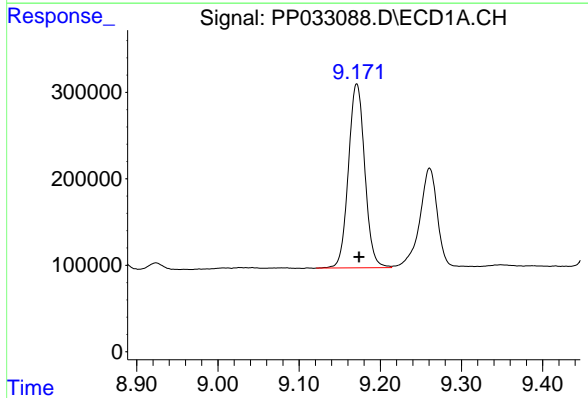
Instrument :
 ECD_P
ClientSampled :
 S21-04-E

Manual Integrations
APPROVED
 Ankita
 2/3/2021 4:33:50 PM



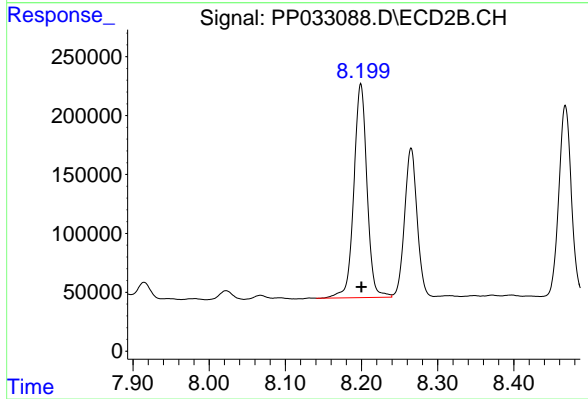
#30 AR-1254-5

R.T.: 7.365 min
 Delta R.T.: -0.002 min
 Response: 365705
 Conc: 161.92 ng/ml



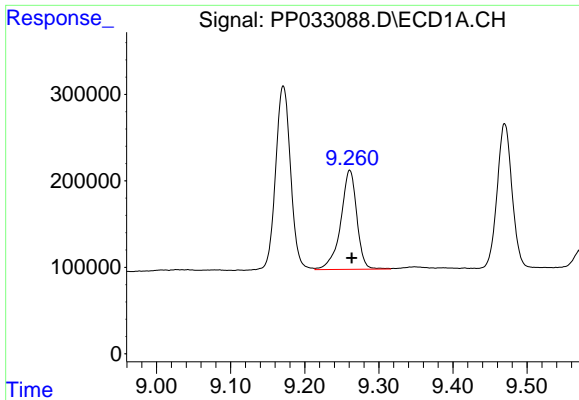
#41 AR-1268-1

R.T.: 9.171 min
 Delta R.T.: -0.003 min
 Response: 2976803
 Conc: 481.48 ng/ml



#41 AR-1268-1

R.T.: 8.199 min
 Delta R.T.: 0.000 min
 Response: 2174744
 Conc: 458.95 ng/ml

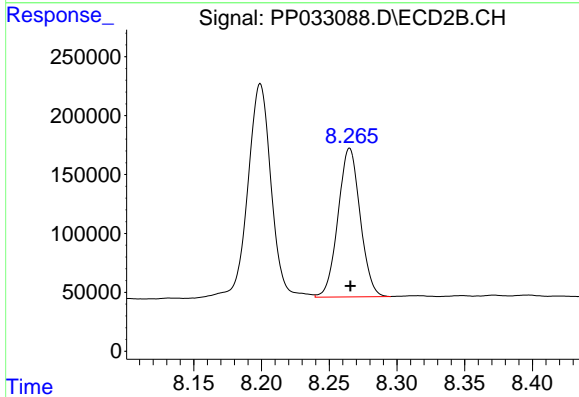


#42 AR-1268-2

R.T.: 9.261 min
 Delta R.T.: -0.002 min
 Response: 1734049
 Conc: 310.03 ng/ml

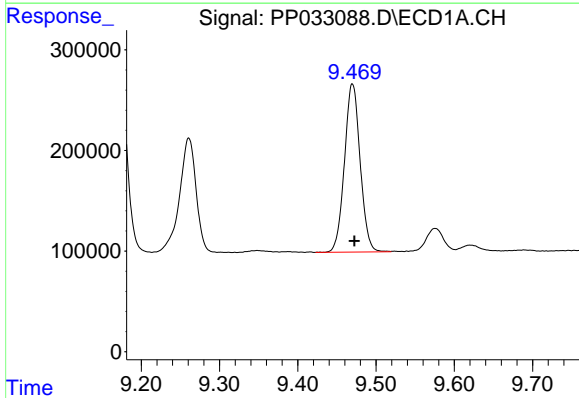
Instrument :
 ECD_P
ClientSampled :
 S21-04-E

Manual Integrations
APPROVED
 Ankita
 2/3/2021 4:33:50 PM



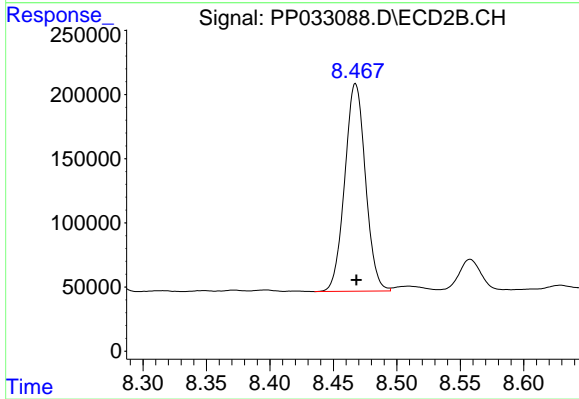
#42 AR-1268-2

R.T.: 8.265 min
 Delta R.T.: 0.000 min
 Response: 1435060
 Conc: 319.94 ng/ml



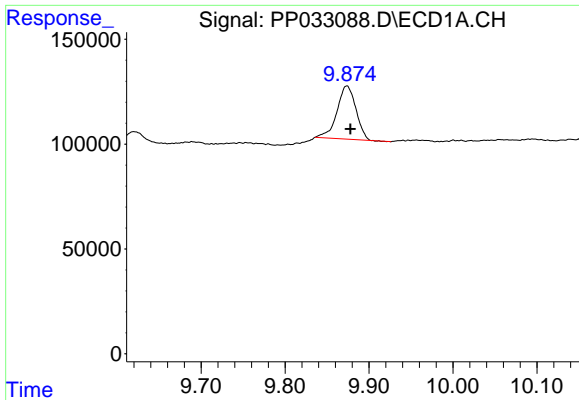
#43 AR-1268-3

R.T.: 9.470 min
 Delta R.T.: -0.003 min
 Response: 2331411
 Conc: 450.37 ng/ml



#43 AR-1268-3

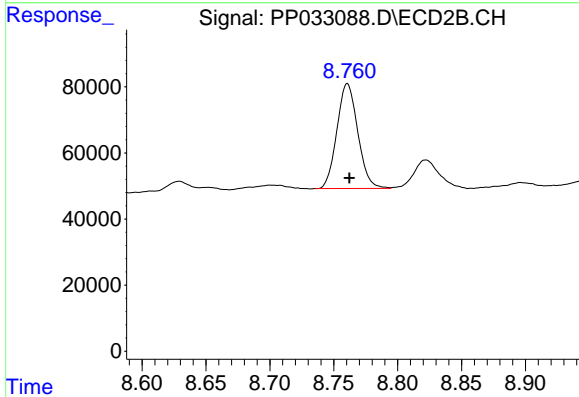
R.T.: 8.467 min
 Delta R.T.: 0.000 min
 Response: 1838437
 Conc: 447.26 ng/ml



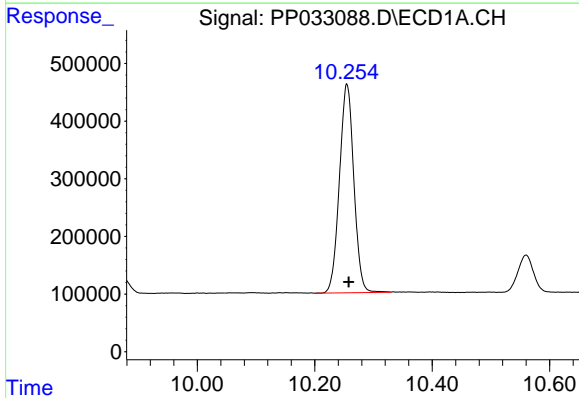
#44 AR-1268-4
 R.T.: 9.874 min
 Delta R.T.: -0.004 min
 Response: 398344
 Conc: 251.21 ng/ml

Instrument :
 ECD_P
ClientSampled :
 S21-04-E

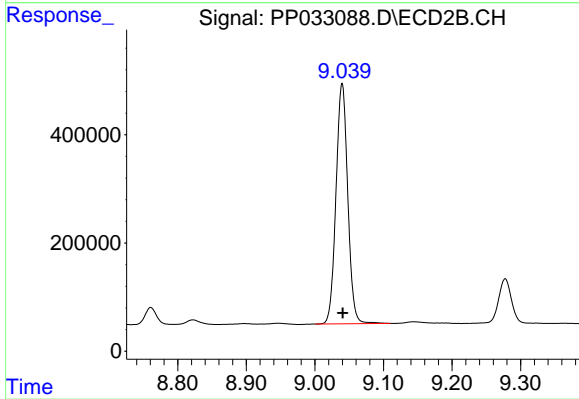
Manual Integrations
APPROVED
 Ankita
 2/3/2021 4:33:50 PM



#44 AR-1268-4
 R.T.: 8.761 min
 Delta R.T.: -0.002 min
 Response: 361121
 Conc: 263.53 ng/ml



#45 AR-1268-5
 R.T.: 10.255 min
 Delta R.T.: -0.003 min
 Response: 6165910
 Conc: 475.91 ng/ml



#45 AR-1268-5
 R.T.: 9.040 min
 Delta R.T.: 0.000 min
 Response: 5289787
 Conc: 469.04 ng/ml