

Data Path : Z:\pestpcbsrv\HPCHEM1\ECD_P\Data\PP012921\
 Data File : PP033095.D
 Signal(s) : Signal #1: ECD1A.CH Signal #2: ECD2B.CH
 Acq On : 29 Jan 2021 22:19
 Operator : DD\AJ
 Sample : I.BLK
 Misc :
 ALS Vial : 2 Sample Multiplier: 1

Instrument :
 ECD_P
 ClientSampleId :
 I.BLK

Integration File signal 1: autoint1.e
 Integration File signal 2: autoint2.e
 Quant Time: Jan 30 00:30:39 2021
 Quant Method : Z:\pestpcbsrv\HPCHEM1\ECD_P\methods\PP012821.M
 Quant Title : GC EXTRACTABLES
 QLast Update : Fri Jan 29 04:07:51 2021
 Response via : Initial Calibration
 Integrator: ChemStation 6890 Scale Mode: Small noise peaks clipped

Volume Inj. : 2 µl
 Signal #1 Phase : ZB-MR1 Signal #2 Phase: ZB-MR2
 Signal #1 Info : 30Mx0.32mmx 0.50µ Signal #2 Info : 30M x 0.32mm x 0.25µm

Compound	RT#1	RT#2	Resp#1	Resp#2	ng/ml	ng/ml

System Monitoring Compounds						
1) SA Tetrachlo...	4.732	4.005	1092462	914414	19.239	19.891
2) SA Decachlor...	10.558	9.276	844750	762745	23.545	23.212

Target Compounds

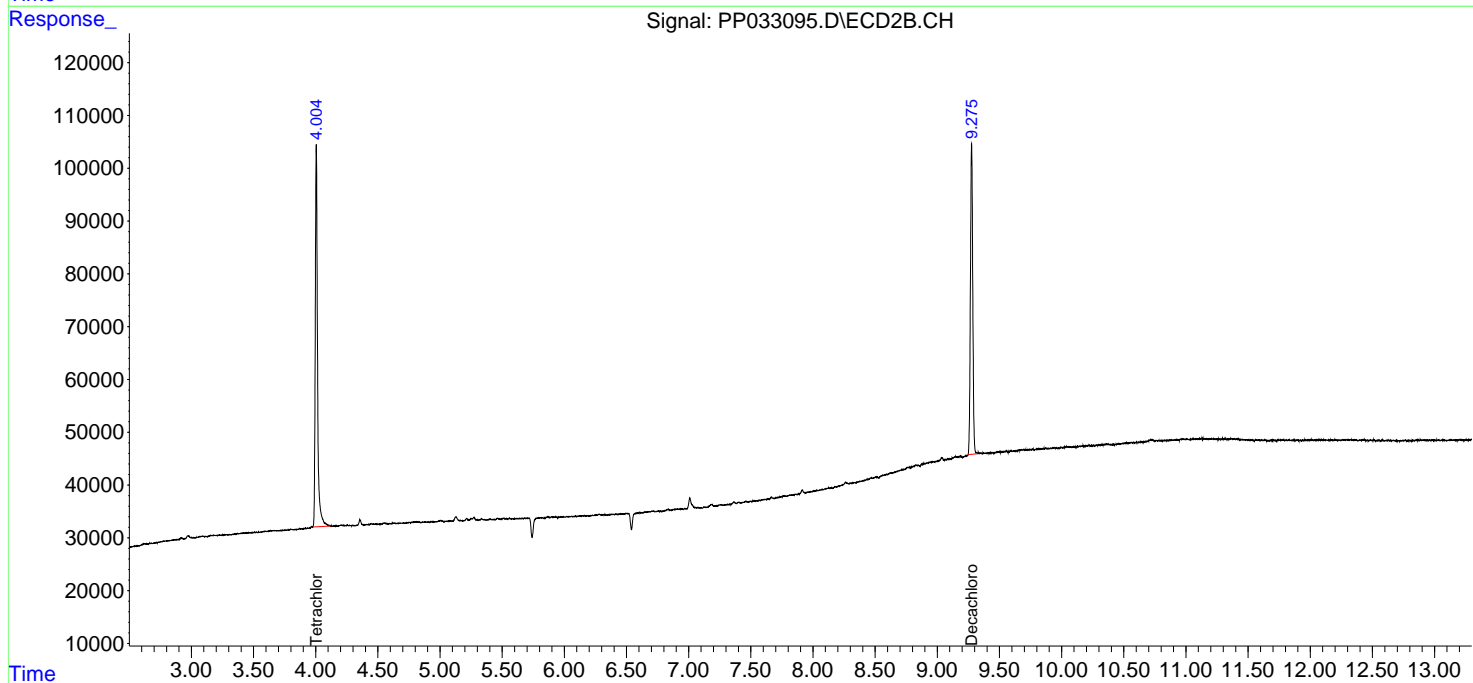
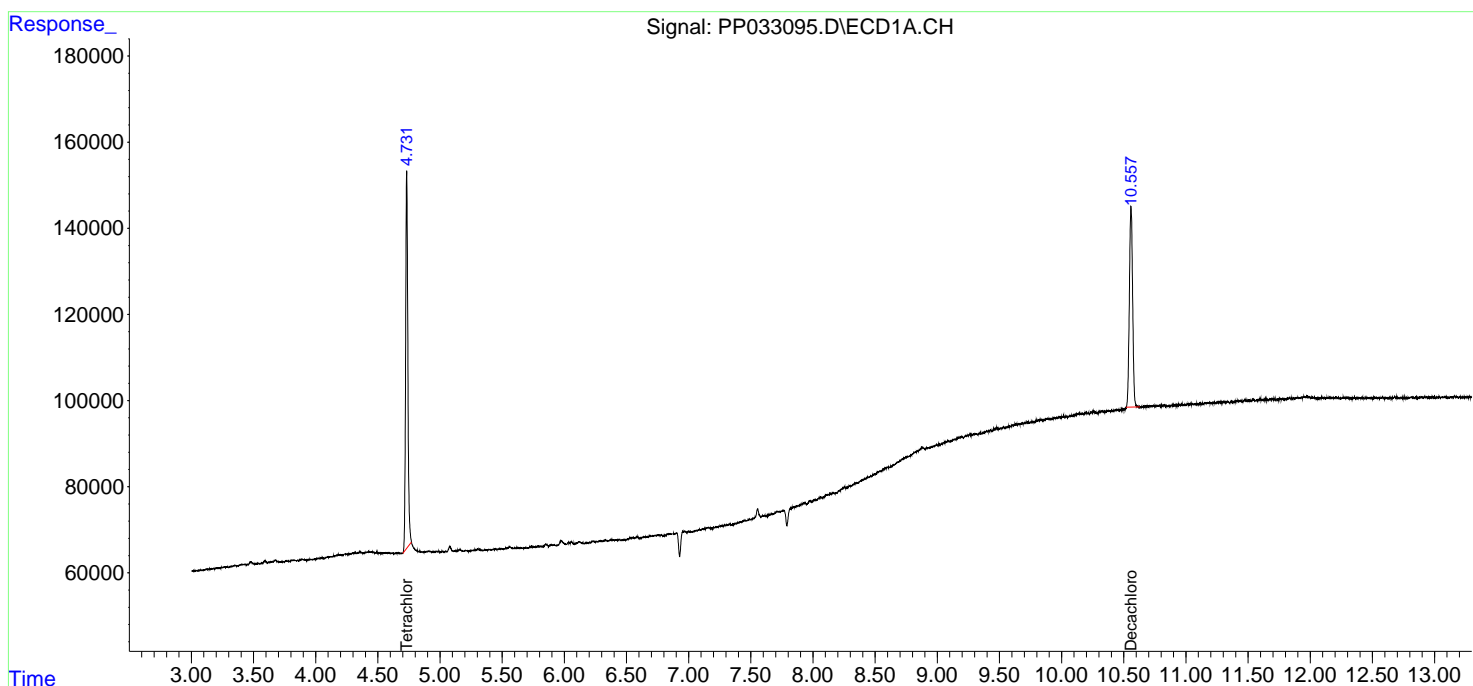
(f)=RT Delta > 1/2 Window (#)=Amounts differ by > 25% (m)=manual int.

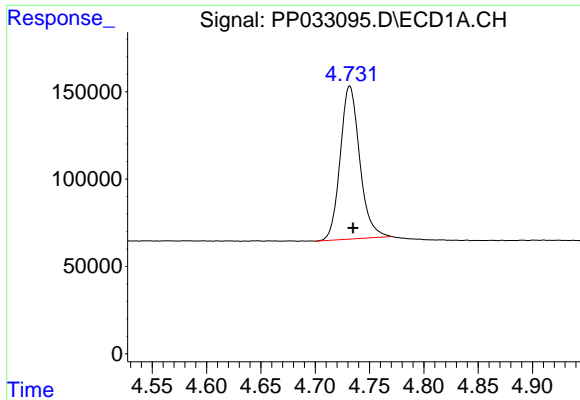
Data Path : Z:\pestpcbsrv\HPCHEM1\ECD_P\Data\PP012921\
 Data File : PP033095.D
 Signal(s) : Signal #1: ECD1A.CH Signal #2: ECD2B.CH
 Acq On : 29 Jan 2021 22:19
 Operator : DD\AJ
 Sample : I.BLK
 Misc :
 ALS Vial : 2 Sample Multiplier: 1

Instrument :
 ECD_P
 ClientSampled :
 I.BLK

Integration File signal 1: autoint1.e
 Integration File signal 2: autoint2.e
 Quant Time: Jan 30 00:30:39 2021
 Quant Method : Z:\pestpcbsrv\HPCHEM1\ECD_P\methods\PP012821.M
 Quant Title : GC EXTRACTABLES
 QLast Update : Fri Jan 29 04:07:51 2021
 Response via : Initial Calibration
 Integrator: ChemStation 6890 Scale Mode: Small noise peaks clipped

Volume Inj. : 2 µl
 Signal #1 Phase : ZB-MR1 Signal #2 Phase: ZB-MR2
 Signal #1 Info : 30Mx0.32mmx 0.50µ Signal #2 Info : 30M x 0.32mm x 0.25µm

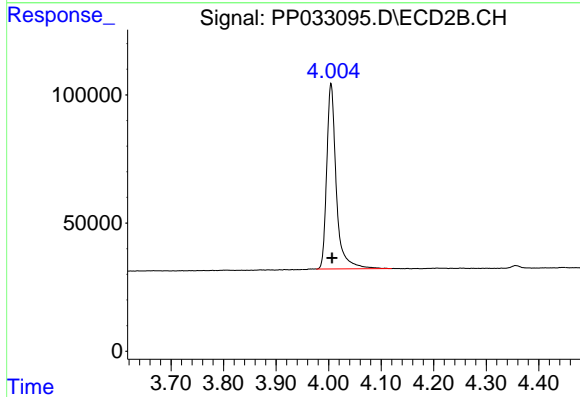




#1 Tetrachloro-m-xylene

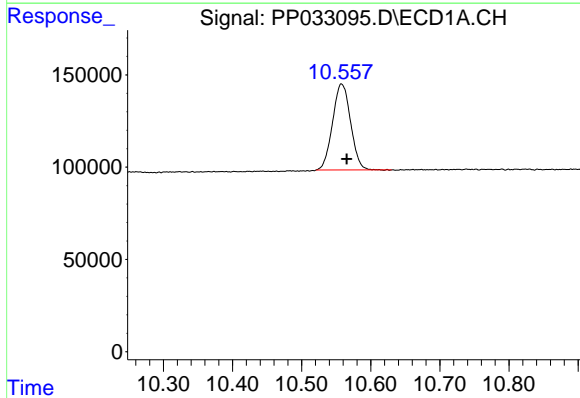
R.T.: 4.732 min
 Delta R.T.: -0.003 min
 Response: 1092462
 Conc: 19.24 ng/ml

Instrument :
 ECD_P
 ClientSampled :
 I.BLK



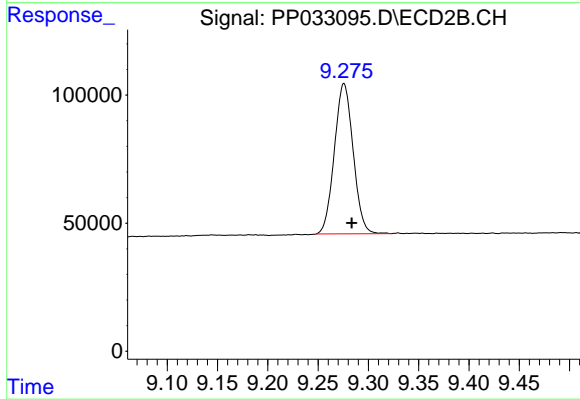
#1 Tetrachloro-m-xylene

R.T.: 4.005 min
 Delta R.T.: -0.002 min
 Response: 914414
 Conc: 19.89 ng/ml



#2 Decachlorobiphenyl

R.T.: 10.558 min
 Delta R.T.: -0.007 min
 Response: 844750
 Conc: 23.55 ng/ml



#2 Decachlorobiphenyl

R.T.: 9.276 min
 Delta R.T.: -0.008 min
 Response: 762745
 Conc: 23.21 ng/ml