

Data Path : Z:\pestpcbsrv\HPCHEM1\ECD_P\Data\PP012925\
 Data File : PP069313.D
 Signal(s) : Signal #1: ECD1A.ch Signal #2: ECD2B.ch
 Acq On : 29 Jan 2025 12:49
 Operator : YP\AJ
 Sample : Q1168-01
 Misc : AR1660 LOD 25 PPB
 ALS Vial : 17 Sample Multiplier: 1

Instrument :
 ECD_P
 ClientSampleId :
 LOD-MDL-SOIL-01-QT1-2025

Integration File signal 1: autoint1.e
 Integration File signal 2: autoint2.e
 Quant Time: Jan 29 13:43:20 2025
 Quant Method : Z:\pestpcbsrv\HPCHEM1\ECD_P\methods\PP012825.M
 Quant Title : GC EXTRACTABLES
 QLast Update : Wed Jan 29 00:13:21 2025
 Response via : Initial Calibration
 Integrator: ChemStation

Volume Inj. : 2 µl
 Signal #1 Phase : ZB-MR1 Signal #2 Phase: ZB-MR2
 Signal #1 Info : 30Mx0.32mmx 0.50µ Signal #2 Info : 30M x 0.32mm x 0.25µm

Compound	RT#1	RT#2	Resp#1	Resp#2	ng/ml	ng/ml
System Monitoring Compounds						
1) SA Tetrachlo...	4.535	3.840	28237341	18590520	19.726	20.829
2) SA Decachlor...	10.279	8.911	22168217	22875140	20.284	20.452
Target Compounds						
3) L1 AR-1016-1	5.690	4.933	1275855	868395	27.537	26.626
4) L1 AR-1016-2	5.711	4.952	1822435	1240649	26.849	27.595
5) L1 AR-1016-3	5.774	5.130	1051439	660105	24.684	26.527
6) L1 AR-1016-4	5.871	5.172	1132698	536190	32.362	26.549
7) L1 AR-1016-5	6.164	5.386	943990	807031	28.555	30.086
8) L2 AR-1221-1	4.736	4.051	1239537	192554	65.172	15.632 #
9) L2 AR-1221-2	4.837	4.141	697419	716366	50.934	73.979 #
10) L2 AR-1221-3	4.898	4.217	703281	471200	16.767	16.151
11) L3 AR-1232-1	4.898	4.217	703281	471200	21.124	20.069
12) L3 AR-1232-2	5.424	4.952	935951	1240649	57.273	52.633
13) L3 AR-1232-3	5.711	5.130	1822435	660105	53.041	50.984
14) L3 AR-1232-4	5.871	5.214	1132698	608517	63.577	54.889
15) L3 AR-1232-5	5.962	5.386	373542	807031	32.588	66.094 #
16) L4 AR-1242-1	5.690	4.933	1275855	868395	30.592	30.119
17) L4 AR-1242-2	5.711	4.952	1822435	1240649	30.893	31.490
18) L4 AR-1242-3	5.774	5.130	1051439	660105	28.342	29.333
19) L4 AR-1242-4	5.871	5.214	1132698	608517	34.539	28.195
20) L4 AR-1242-5	6.538f	5.742	1013330	743797	31.099	25.855
21) L5 AR-1248-1	5.690	4.933	1275855	868395	39.331	39.454
22) L5 AR-1248-2	5.962	5.172	373542	536190	8.800	17.835 #
23) L5 AR-1248-3	6.164	5.214	943990	608517	20.090	19.640
24) L5 AR-1248-4	6.538	5.386	1013330	807031	18.384	21.845
25) L5 AR-1248-5	6.538f	5.778	1013330	200266	18.982	5.356 #
26) L6 AR-1254-1	6.538	5.742	1013330	743797	17.512	13.510
27) L6 AR-1254-2	6.757	5.891	708691	562032	8.832	11.620 #
28) L6 AR-1254-3	7.118	6.311	591681	1170855	7.020	15.427 #
29) L6 AR-1254-4	7.404	6.522	415780	430648	6.098	8.403 #
30) L6 AR-1254-5	7.819	6.944	2872856	1531535	42.219	23.010 #
31) L7 AR-1260-1	7.285	6.427	1545159	1238321	26.442	25.676
32) L7 AR-1260-2	7.540	6.615	2643003	1723837	33.966	28.120
33) L7 AR-1260-3	7.898	6.771	1874758	2604920	29.987	43.302 #
34) L7 AR-1260-4	8.124	7.243	2514765	1143779	38.116	24.614 #
35) L7 AR-1260-5	8.446	7.483	3178609	2810592	24.278	25.288
36) L8 AR-1262-1	8.124	6.983	2514765	1301949	31.825	18.334 #
37) L8 AR-1262-2	8.446	7.243	3178609	1143779	20.786	18.757
38) L8 AR-1262-3	8.771	7.769	2116763	836966	19.917	16.003
39) L8 AR-1262-4	8.850	7.831	1462924	2150521	17.886	23.265 #
40) L8 AR-1262-5	9.513	8.336	1009526	869133	17.833	18.186
41) L9 AR-1268-1	8.771	7.769	2116763	836966	11.988	5.767 #

Data Path : Z:\pestpcbsrv\HPCHEM1\ECD_P\Data\PP012925\
 Data File : PP069313.D
 Signal(s) : Signal #1: ECD1A.ch Signal #2: ECD2B.ch
 Acq On : 29 Jan 2025 12:49
 Operator : YP\AJ
 Sample : Q1168-01
 Misc : AR1660 LOD 25 PPB
 ALS Vial : 17 Sample Multiplier: 1

Instrument :
 ECD_P
ClientSampleId :
 LOD-MDL-SOIL-01-QT1-2025

Integration File signal 1: autoint1.e
 Integration File signal 2: autoint2.e
 Quant Time: Jan 29 13:43:20 2025
 Quant Method : Z:\pestpcbsrv\HPCHEM1\ECD_P\methods\PP012825.M
 Quant Title : GC EXTRACTABLES
 QLast Update : Wed Jan 29 00:13:21 2025
 Response via : Initial Calibration
 Integrator: ChemStation

Volume Inj. : 2 µl
 Signal #1 Phase : ZB-MR1 Signal #2 Phase: ZB-MR2
 Signal #1 Info : 30Mx0.32mmx 0.50µ Signal #2 Info : 30M x 0.32mm x 0.25µm

	Compound	RT#1	RT#2	Resp#1	Resp#2	ng/ml	ng/ml
42)	L9 AR-1268-2	8.850	7.831	1462924	2150521	9.296	16.192 #
44)	L9 AR-1268-4	9.513	8.336	1009526	869133	17.192	16.689
45)	L9 AR-1268-5	0.000	8.642	0	334232	N.D.	0.938 #

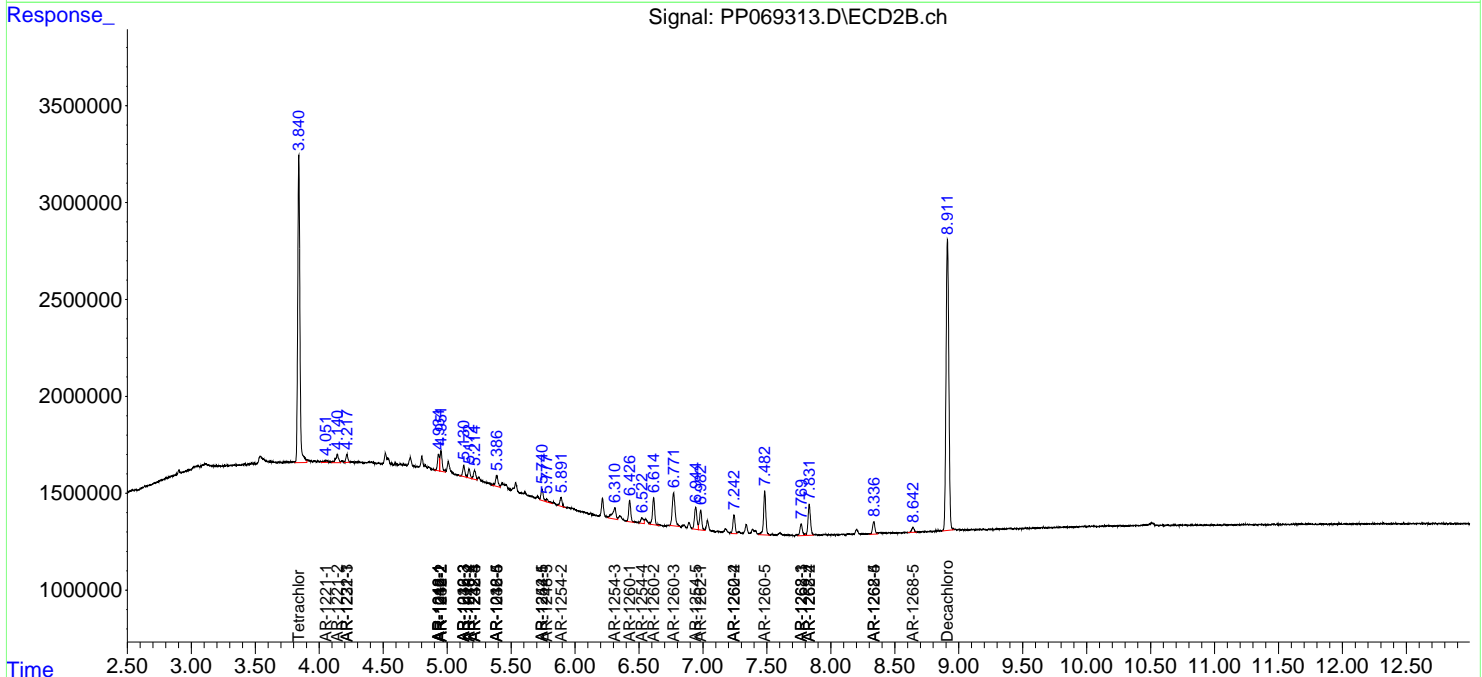
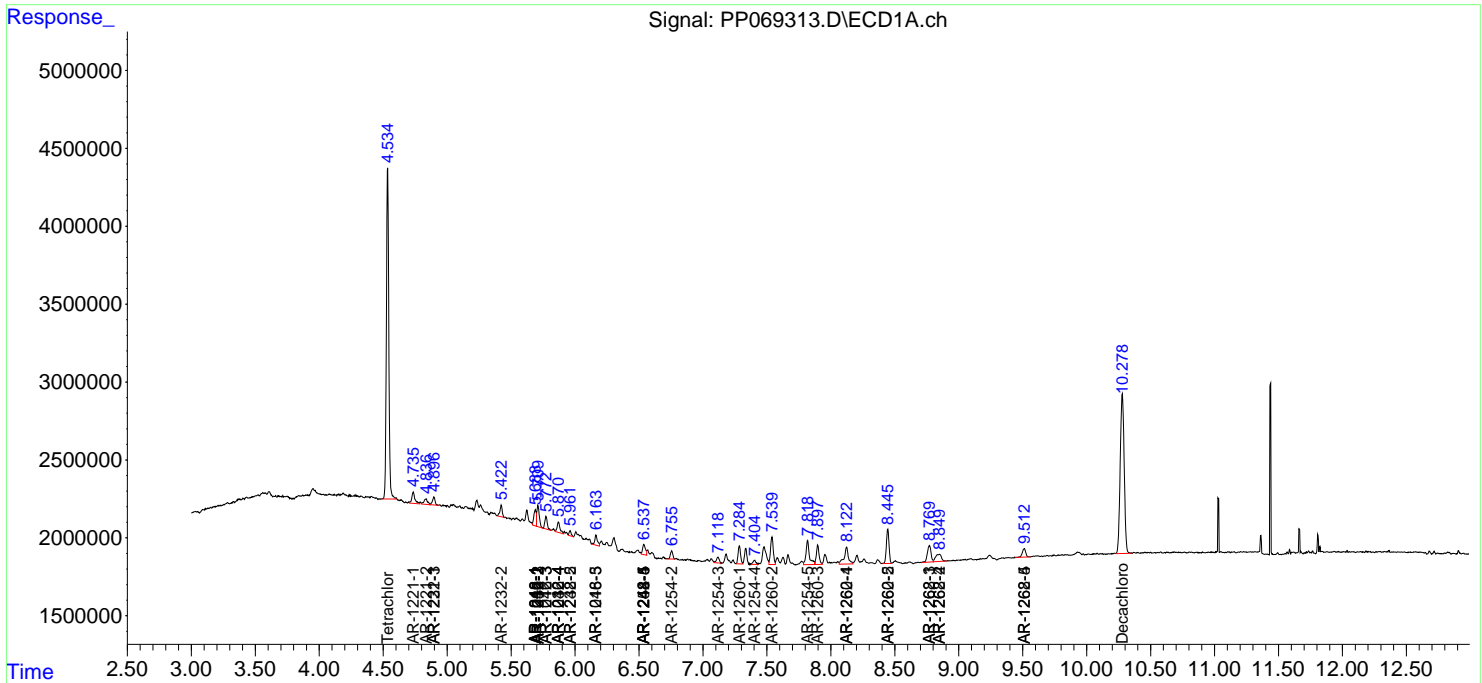
(f)=RT Delta > 1/2 Window (#)=Amounts differ by > 25% (m)=manual int.

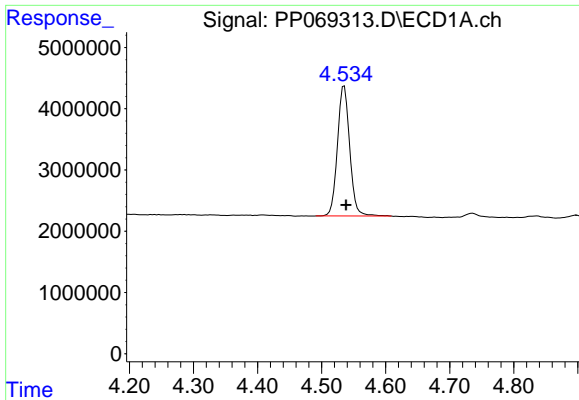
Data Path : Z:\pestpcbsrv\HPCHEM1\ECD_P\Data\PP012925\
 Data File : PP069313.D
 Signal(s) : Signal #1: ECD1A.ch Signal #2: ECD2B.ch
 Acq On : 29 Jan 2025 12:49
 Operator : YP\AJ
 Sample : Q1168-01
 Misc : AR1660 LOD 25 PPB
 ALS Vial : 17 Sample Multiplier: 1

Instrument :
 ECD_P
ClientSampleId :
 LOD-MDL-SOIL-01-QT1-2025

Integration File signal 1: autoint1.e
 Integration File signal 2: autoint2.e
 Quant Time: Jan 29 13:43:20 2025
 Quant Method : Z:\pestpcbsrv\HPCHEM1\ECD_P\methods\PP012825.M
 Quant Title : GC EXTRACTABLES
 QLast Update : Wed Jan 29 00:13:21 2025
 Response via : Initial Calibration
 Integrator: ChemStation

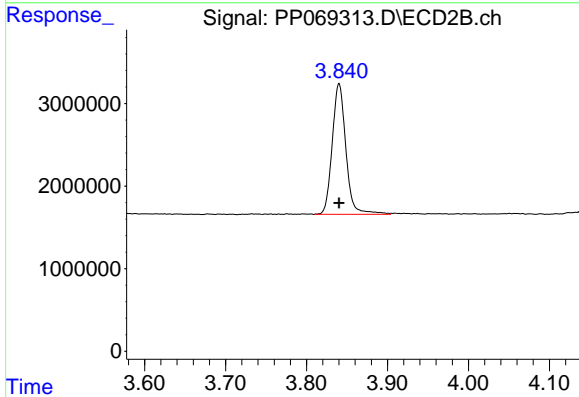
Volume Inj. : 2 µl
 Signal #1 Phase : ZB-MR1 Signal #2 Phase: ZB-MR2
 Signal #1 Info : 30Mx0.32mmx 0.50µ Signal #2 Info : 30M x 0.32mm x 0.25µm



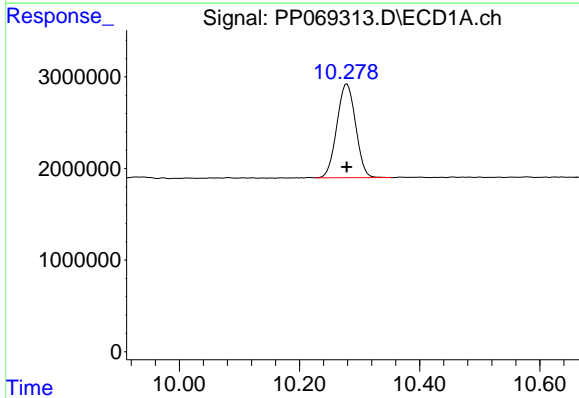


#1 Tetrachloro-m-xylene
R.T.: 4.535 min
Delta R.T.: -0.003 min
Response: 28237341
Conc: 19.73 ng/ml

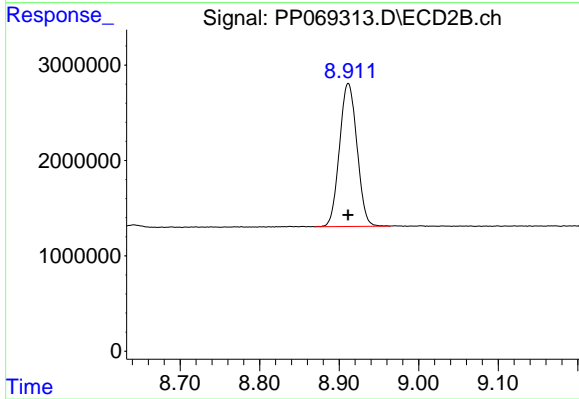
Instrument :
ECD_P
ClientSampleId :
LOD-MDL-SOIL-01-QT1-2025



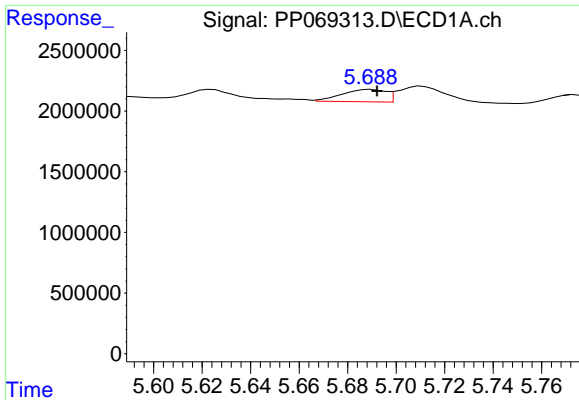
#1 Tetrachloro-m-xylene
R.T.: 3.840 min
Delta R.T.: 0.000 min
Response: 18590520
Conc: 20.83 ng/ml



#2 Decachlorobiphenyl
R.T.: 10.279 min
Delta R.T.: 0.000 min
Response: 22168217
Conc: 20.28 ng/ml



#2 Decachlorobiphenyl
R.T.: 8.911 min
Delta R.T.: 0.000 min
Response: 22875140
Conc: 20.45 ng/ml

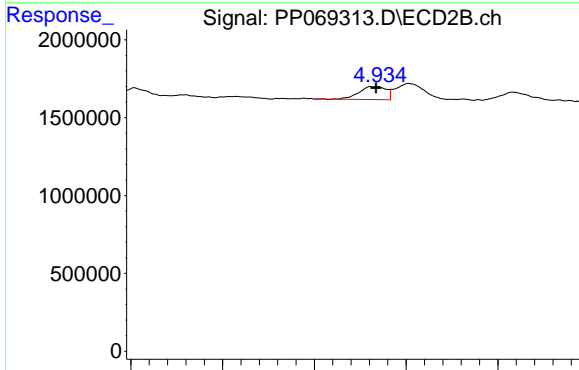


#3 AR-1016-1

R.T.: 5.690 min
 Delta R.T.: -0.002 min
 Response: 1275855
 Conc: 27.54 ng/ml

Instrument :
 ECD_P
 ClientSampleId :
 LOD-MDL-SOIL-01-QT1-2025

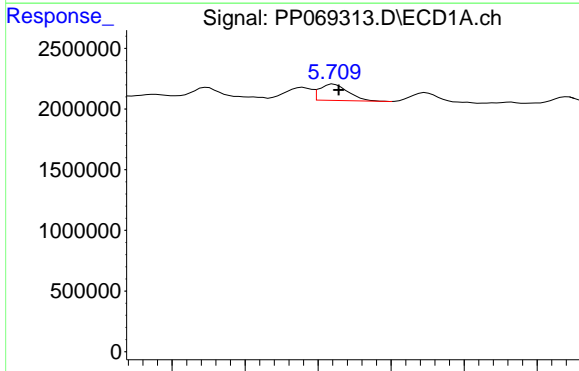
Time 5.60 5.62 5.64 5.66 5.68 5.70 5.72 5.74 5.76



#3 AR-1016-1

R.T.: 4.933 min
 Delta R.T.: 0.000 min
 Response: 868395
 Conc: 26.63 ng/ml

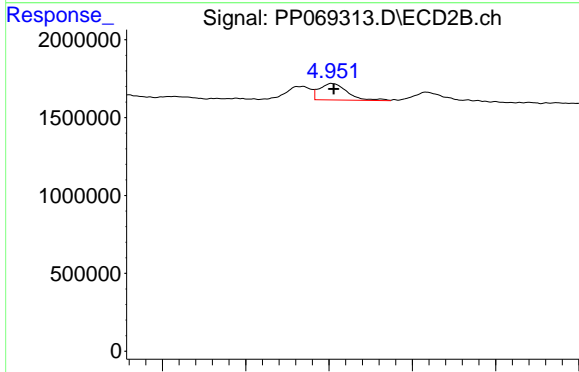
Time 4.80 4.85 4.90 4.95 5.00



#4 AR-1016-2

R.T.: 5.711 min
 Delta R.T.: -0.003 min
 Response: 1822435
 Conc: 26.85 ng/ml

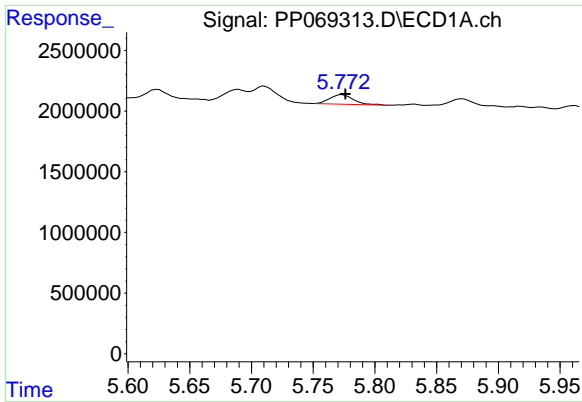
Time 5.60 5.65 5.70 5.75 5.80 5.85



#4 AR-1016-2

R.T.: 4.952 min
 Delta R.T.: 0.000 min
 Response: 1240649
 Conc: 27.60 ng/ml

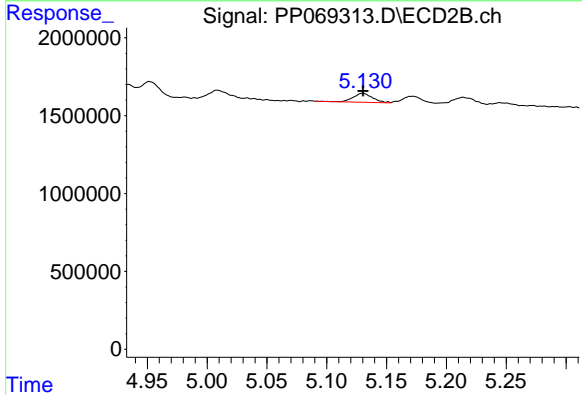
Time 4.85 4.90 4.95 5.00 5.05



#5 AR-1016-3

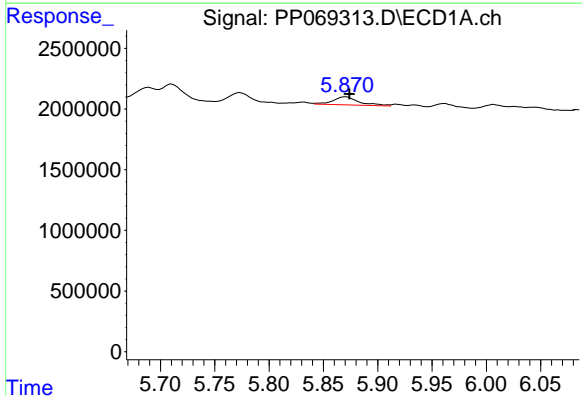
R.T.: 5.774 min
 Delta R.T.: -0.002 min
 Response: 1051439
 Conc: 24.68 ng/ml

Instrument :
 ECD_P
 ClientSampleId :
 LOD-MDL-SOIL-01-QT1-2025



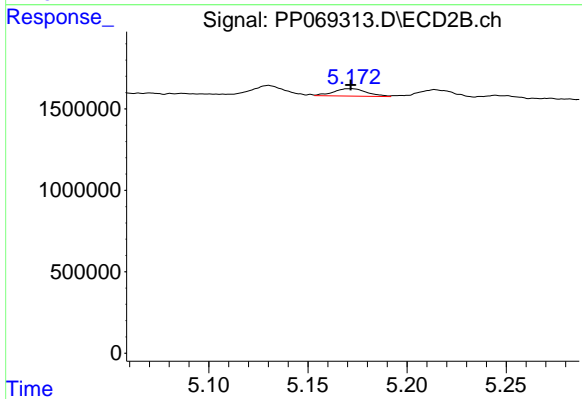
#5 AR-1016-3

R.T.: 5.130 min
 Delta R.T.: 0.000 min
 Response: 660105
 Conc: 26.53 ng/ml



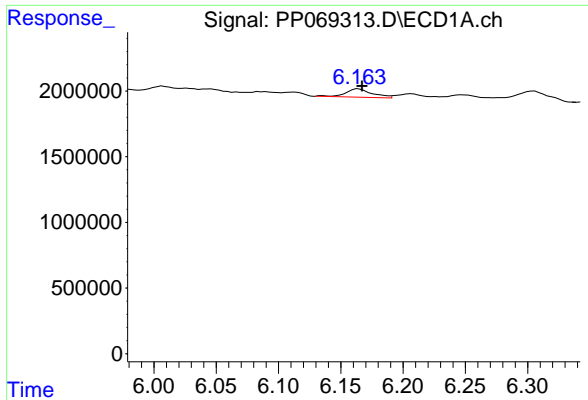
#6 AR-1016-4

R.T.: 5.871 min
 Delta R.T.: -0.003 min
 Response: 1132698
 Conc: 32.36 ng/ml



#6 AR-1016-4

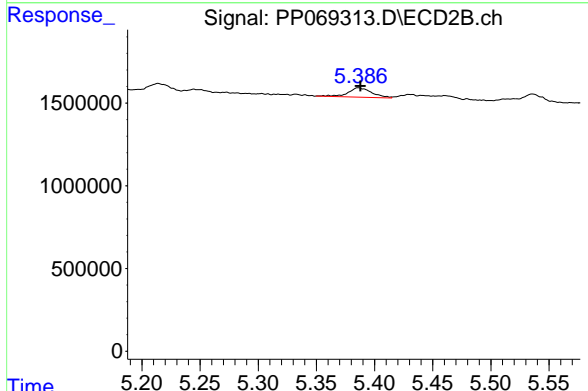
R.T.: 5.172 min
 Delta R.T.: 0.000 min
 Response: 536190
 Conc: 26.55 ng/ml



#7 AR-1016-5

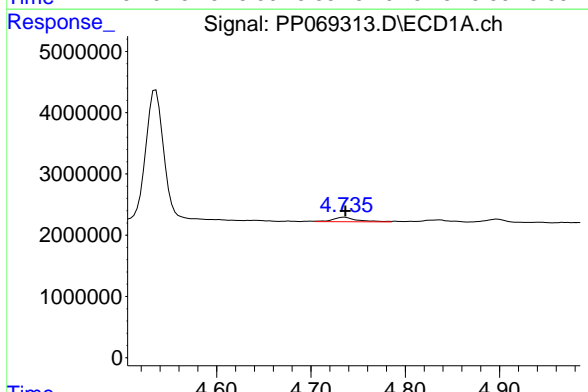
R.T.: 6.164 min
 Delta R.T.: -0.003 min
 Response: 943990
 Conc: 28.56 ng/ml

Instrument :
 ECD_P
 ClientSampleId :
 LOD-MDL-SOIL-01-QT1-2025



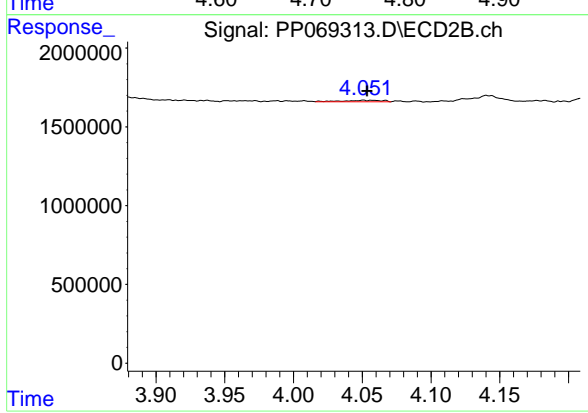
#7 AR-1016-5

R.T.: 5.386 min
 Delta R.T.: -0.002 min
 Response: 807031
 Conc: 30.09 ng/ml



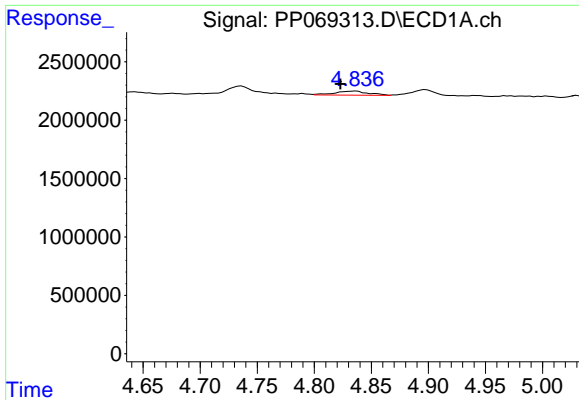
#8 AR-1221-1

R.T.: 4.736 min
 Delta R.T.: 0.000 min
 Response: 1239537
 Conc: 65.17 ng/ml



#8 AR-1221-1

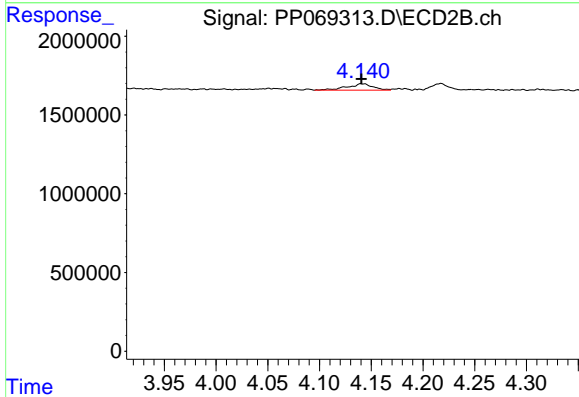
R.T.: 4.051 min
 Delta R.T.: -0.003 min
 Response: 192554
 Conc: 15.63 ng/ml



#9 AR-1221-2

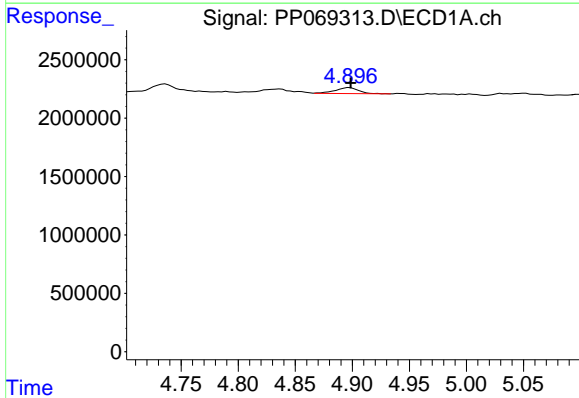
R.T.: 4.837 min
 Delta R.T.: 0.013 min
 Response: 697419
 Conc: 50.93 ng/ml

Instrument :
 ECD_P
 ClientSampleId :
 LOD-MDL-SOIL-01-QT1-2025



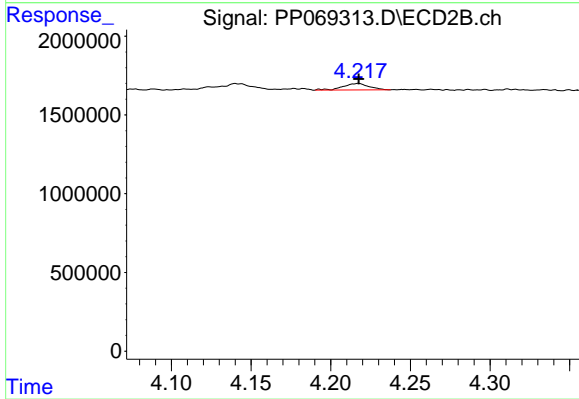
#9 AR-1221-2

R.T.: 4.141 min
 Delta R.T.: 0.000 min
 Response: 716366
 Conc: 73.98 ng/ml



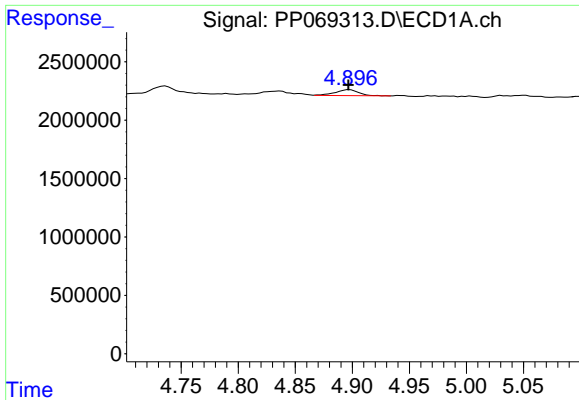
#10 AR-1221-3

R.T.: 4.898 min
 Delta R.T.: 0.000 min
 Response: 703281
 Conc: 16.77 ng/ml



#10 AR-1221-3

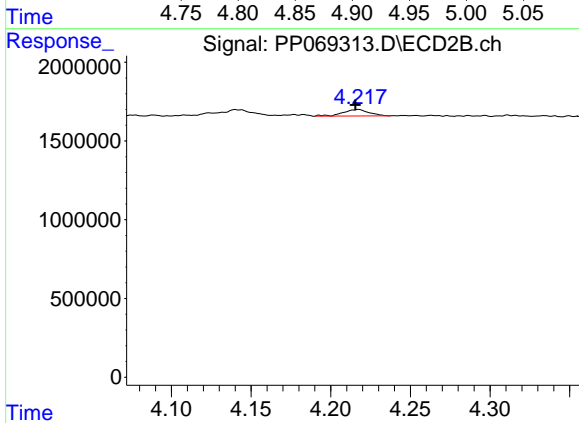
R.T.: 4.217 min
 Delta R.T.: 0.000 min
 Response: 471200
 Conc: 16.15 ng/ml



#11 AR-1232-1

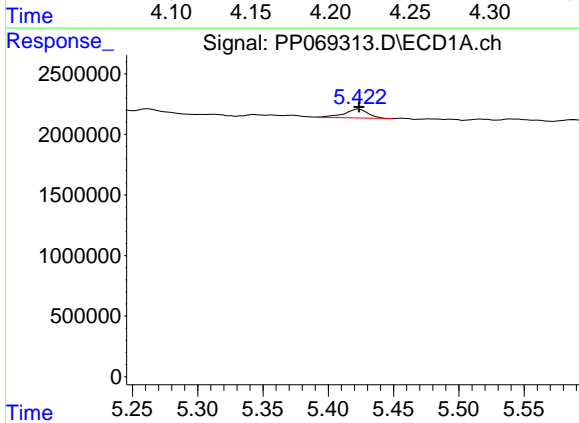
R.T.: 4.898 min
 Delta R.T.: 0.000 min
 Response: 703281
 Conc: 21.12 ng/ml

Instrument :
 ECD_P
 ClientSampleId :
 LOD-MDL-SOIL-01-QT1-2025



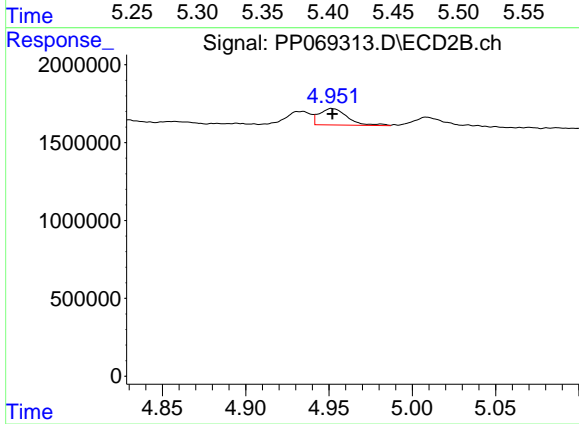
#11 AR-1232-1

R.T.: 4.217 min
 Delta R.T.: 0.002 min
 Response: 471200
 Conc: 20.07 ng/ml



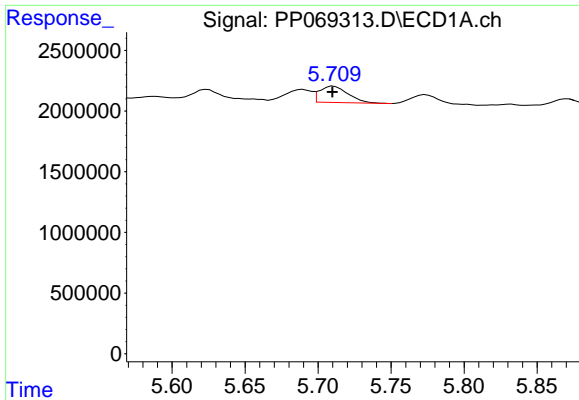
#12 AR-1232-2

R.T.: 5.424 min
 Delta R.T.: 0.000 min
 Response: 935951
 Conc: 57.27 ng/ml



#12 AR-1232-2

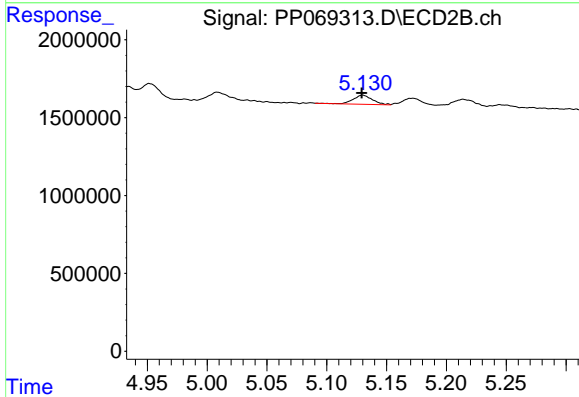
R.T.: 4.952 min
 Delta R.T.: 0.000 min
 Response: 1240649
 Conc: 52.63 ng/ml



#13 AR-1232-3

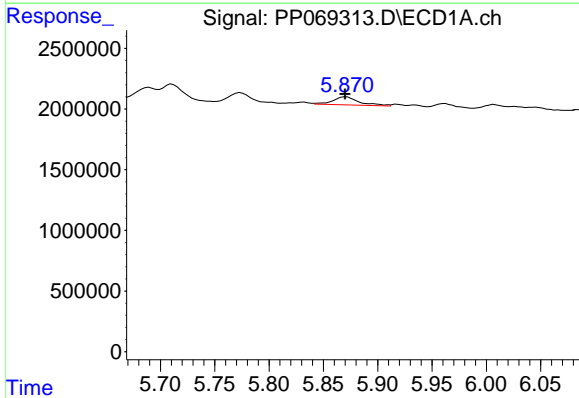
R.T.: 5.711 min
 Delta R.T.: 0.000 min
 Response: 1822435
 Conc: 53.04 ng/ml

Instrument :
 ECD_P
 ClientSampleId :
 LOD-MDL-SOIL-01-QT1-2025



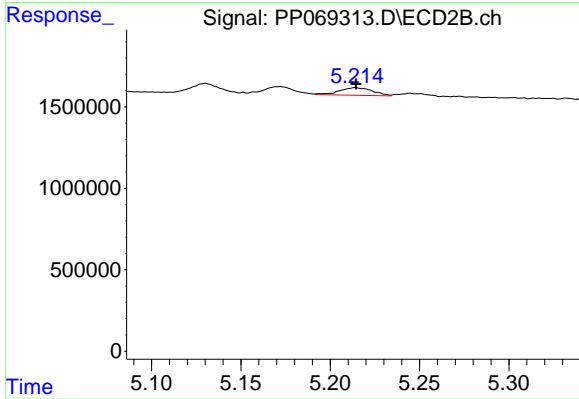
#13 AR-1232-3

R.T.: 5.130 min
 Delta R.T.: 0.000 min
 Response: 660105
 Conc: 50.98 ng/ml



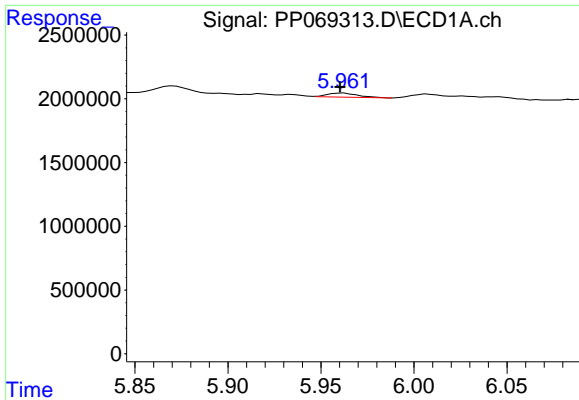
#14 AR-1232-4

R.T.: 5.871 min
 Delta R.T.: 0.000 min
 Response: 1132698
 Conc: 63.58 ng/ml



#14 AR-1232-4

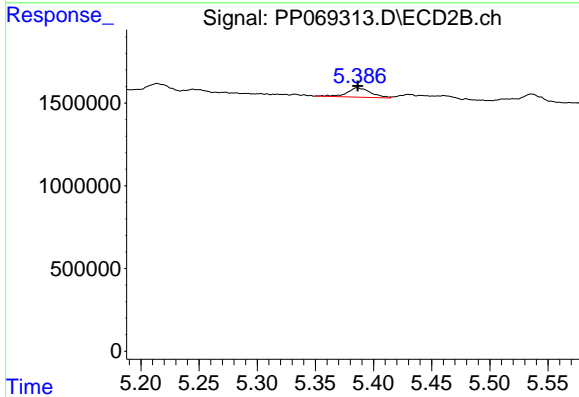
R.T.: 5.214 min
 Delta R.T.: 0.000 min
 Response: 608517
 Conc: 54.89 ng/ml



#15 AR-1232-5

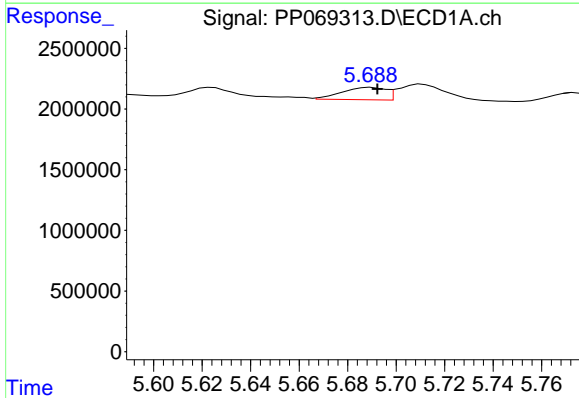
R.T.: 5.962 min
 Delta R.T.: 0.002 min
 Response: 373542
 Conc: 32.59 ng/ml

Instrument :
 ECD_P
 ClientSampleId :
 LOD-MDL-SOIL-01-QT1-2025



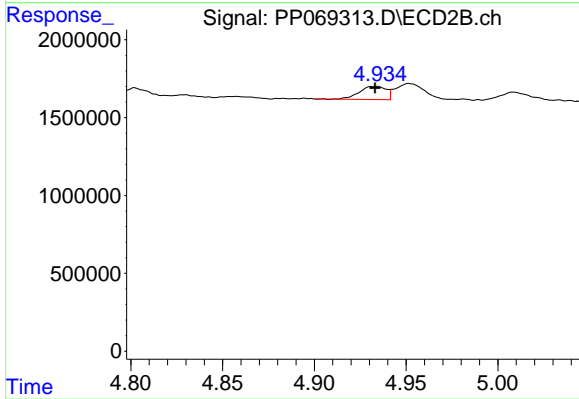
#15 AR-1232-5

R.T.: 5.386 min
 Delta R.T.: 0.000 min
 Response: 807031
 Conc: 66.09 ng/ml



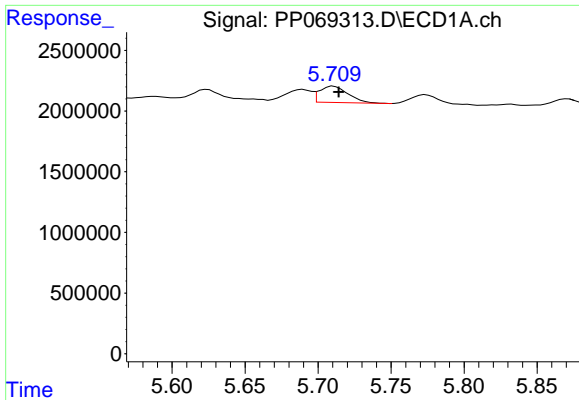
#16 AR-1242-1

R.T.: 5.690 min
 Delta R.T.: -0.003 min
 Response: 1275855
 Conc: 30.59 ng/ml



#16 AR-1242-1

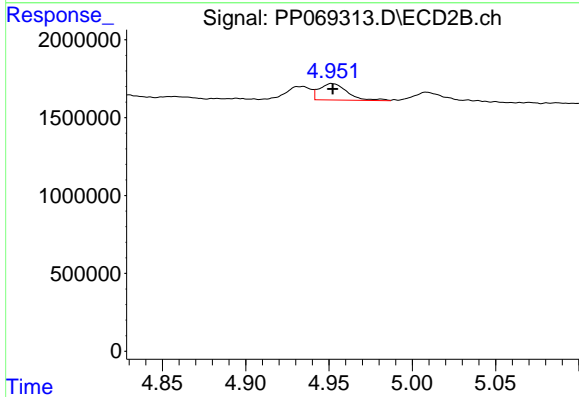
R.T.: 4.933 min
 Delta R.T.: 0.000 min
 Response: 868395
 Conc: 30.12 ng/ml



#17 AR-1242-2

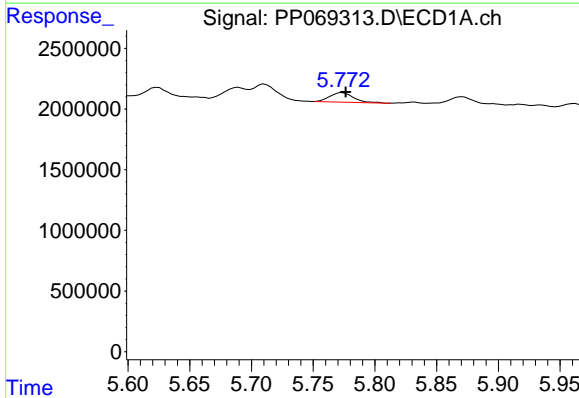
R.T.: 5.711 min
 Delta R.T.: -0.003 min
 Response: 1822435
 Conc: 30.89 ng/ml

Instrument :
 ECD_P
 ClientSampleId :
 LOD-MDL-SOIL-01-QT1-2025



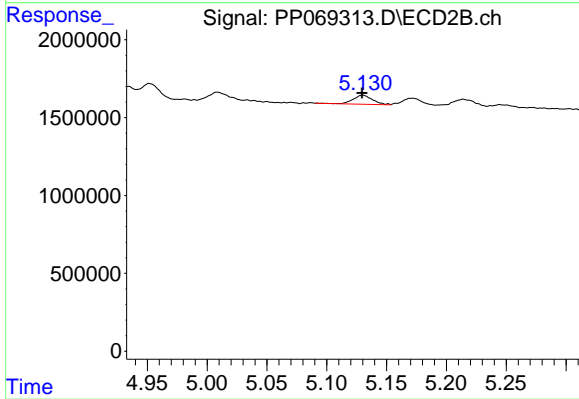
#17 AR-1242-2

R.T.: 4.952 min
 Delta R.T.: 0.000 min
 Response: 1240649
 Conc: 31.49 ng/ml



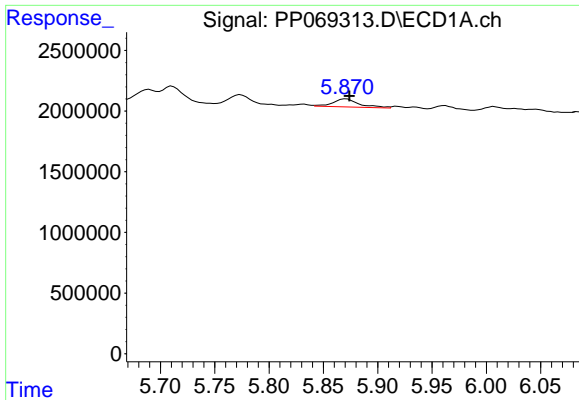
#18 AR-1242-3

R.T.: 5.774 min
 Delta R.T.: -0.003 min
 Response: 1051439
 Conc: 28.34 ng/ml



#18 AR-1242-3

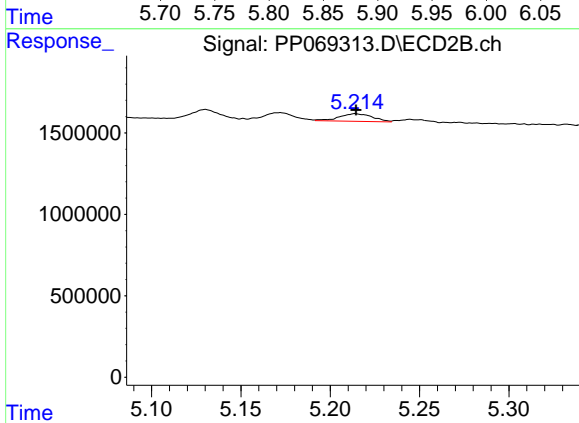
R.T.: 5.130 min
 Delta R.T.: 0.000 min
 Response: 660105
 Conc: 29.33 ng/ml



#19 AR-1242-4

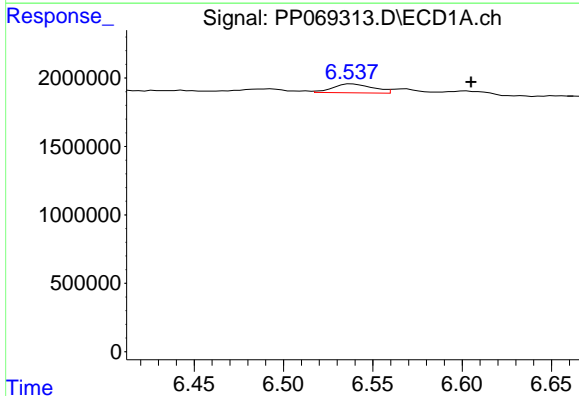
R.T.: 5.871 min
 Delta R.T.: -0.003 min
 Response: 1132698
 Conc: 34.54 ng/ml

Instrument :
 ECD_P
ClientSampleId :
 LOD-MDL-SOIL-01-QT1-2025



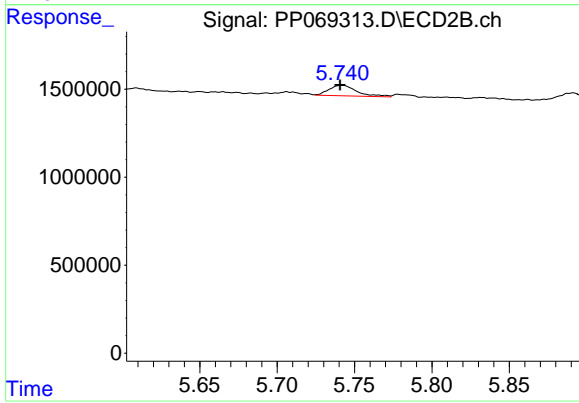
#19 AR-1242-4

R.T.: 5.214 min
 Delta R.T.: 0.000 min
 Response: 608517
 Conc: 28.20 ng/ml



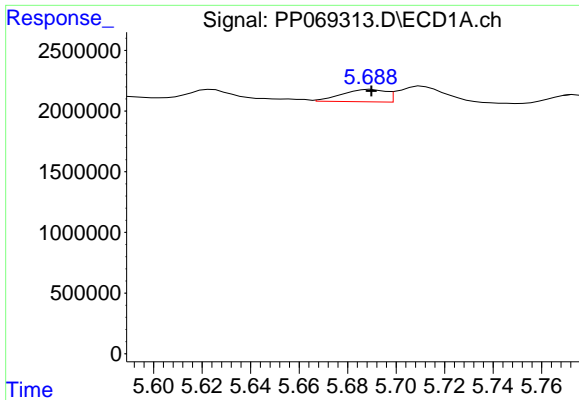
#20 AR-1242-5

R.T.: 6.538 min
 Delta R.T.: -0.067 min
 Response: 1013330
 Conc: 31.10 ng/ml



#20 AR-1242-5

R.T.: 5.742 min
 Delta R.T.: 0.001 min
 Response: 743797
 Conc: 25.85 ng/ml

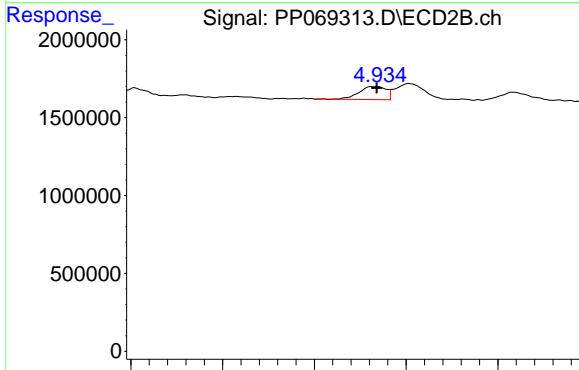


#21 AR-1248-1

R.T.: 5.690 min
 Delta R.T.: 0.000 min
 Response: 1275855
 Conc: 39.33 ng/ml

Instrument :
 ECD_P
 ClientSampleId :
 LOD-MDL-SOIL-01-QT1-2025

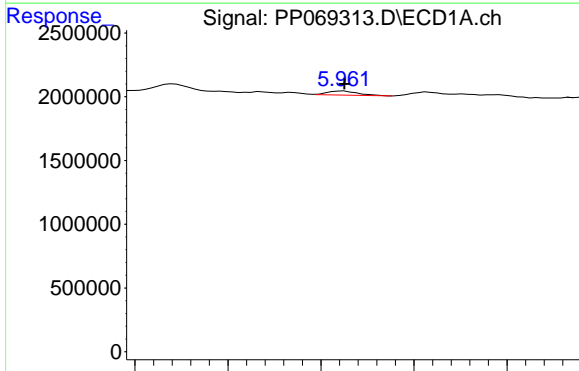
Time 5.60 5.62 5.64 5.66 5.68 5.70 5.72 5.74 5.76



#21 AR-1248-1

R.T.: 4.933 min
 Delta R.T.: 0.000 min
 Response: 868395
 Conc: 39.45 ng/ml

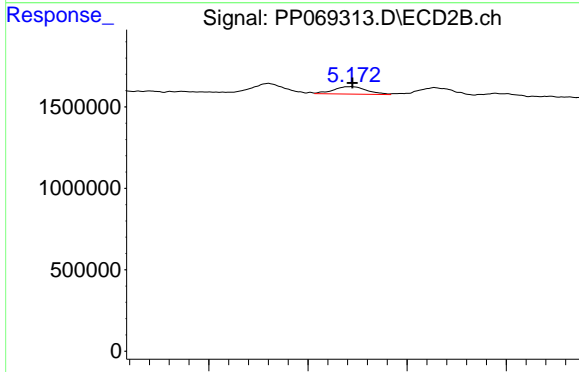
Time 4.80 4.85 4.90 4.95 5.00



#22 AR-1248-2

R.T.: 5.962 min
 Delta R.T.: 0.000 min
 Response: 373542
 Conc: 8.80 ng/ml

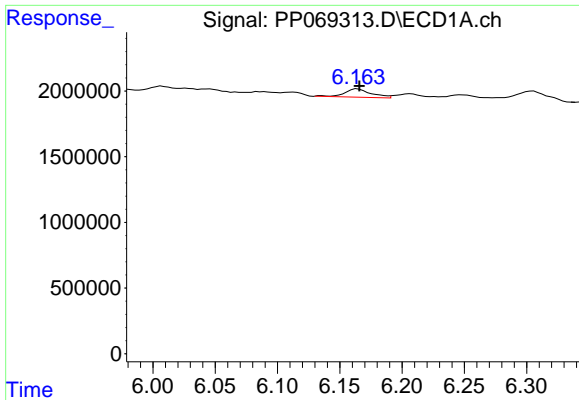
Time 5.85 5.90 5.95 6.00 6.05



#22 AR-1248-2

R.T.: 5.172 min
 Delta R.T.: 0.000 min
 Response: 536190
 Conc: 17.83 ng/ml

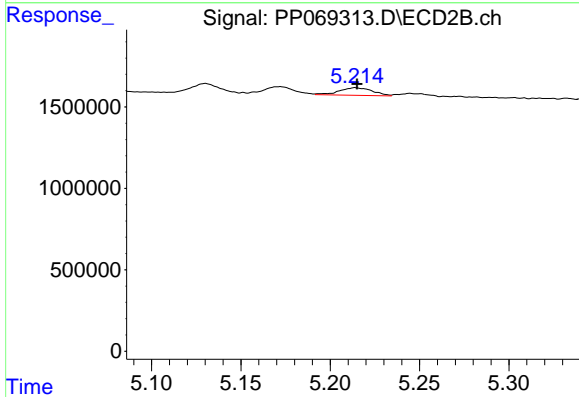
Time 5.10 5.15 5.20 5.25



#23 AR-1248-3

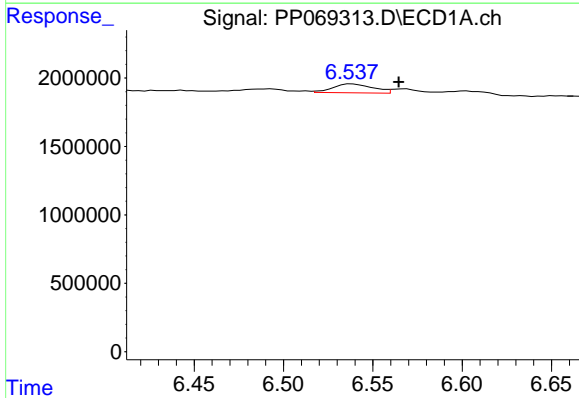
R.T.: 6.164 min
 Delta R.T.: -0.001 min
 Response: 943990
 Conc: 20.09 ng/ml

Instrument :
 ECD_P
 ClientSampleId :
 LOD-MDL-SOIL-01-QT1-2025



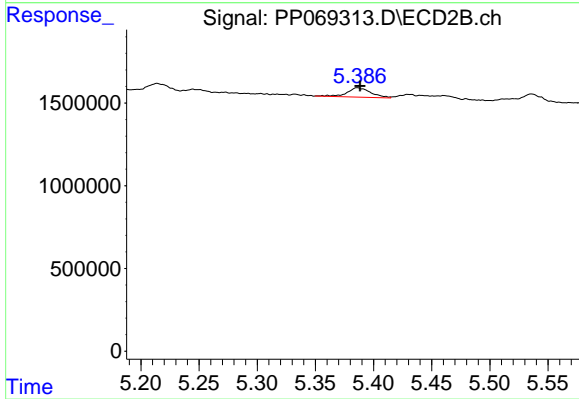
#23 AR-1248-3

R.T.: 5.214 min
 Delta R.T.: 0.000 min
 Response: 608517
 Conc: 19.64 ng/ml



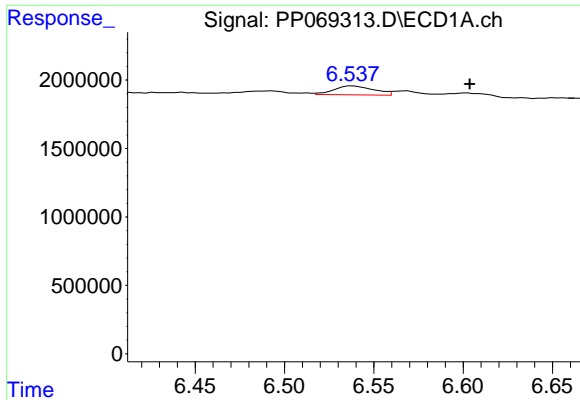
#24 AR-1248-4

R.T.: 6.538 min
 Delta R.T.: -0.026 min
 Response: 1013330
 Conc: 18.38 ng/ml



#24 AR-1248-4

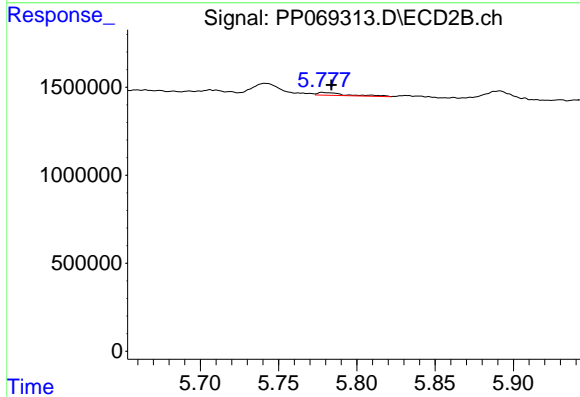
R.T.: 5.386 min
 Delta R.T.: -0.002 min
 Response: 807031
 Conc: 21.84 ng/ml



#25 AR-1248-5

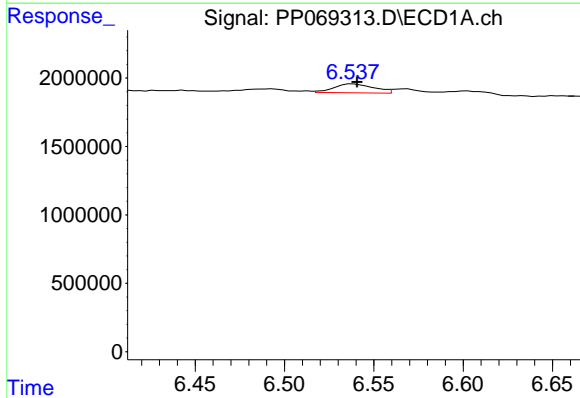
R.T.: 6.538 min
 Delta R.T.: -0.065 min
 Response: 1013330
 Conc: 18.98 ng/ml

Instrument :
 ECD_P
 ClientSampleId :
 LOD-MDL-SOIL-01-QT1-2025



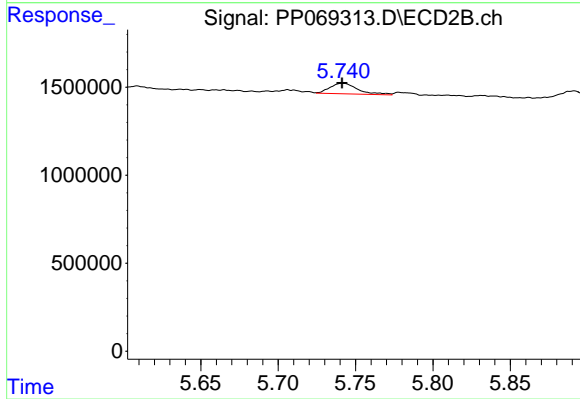
#25 AR-1248-5

R.T.: 5.778 min
 Delta R.T.: -0.005 min
 Response: 200266
 Conc: 5.36 ng/ml



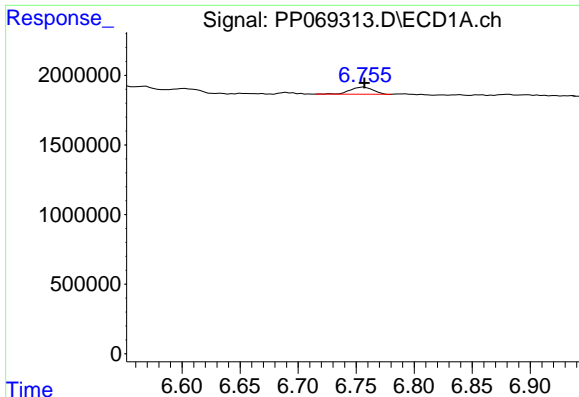
#26 AR-1254-1

R.T.: 6.538 min
 Delta R.T.: -0.002 min
 Response: 1013330
 Conc: 17.51 ng/ml



#26 AR-1254-1

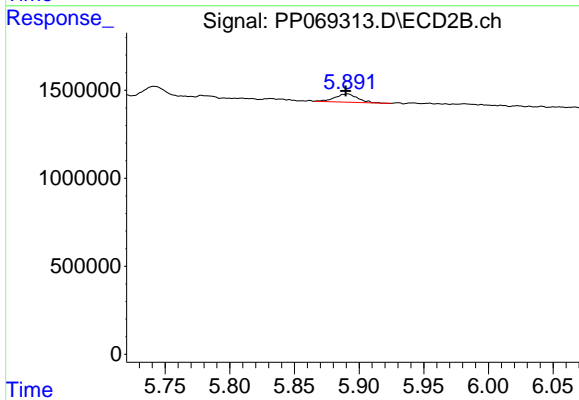
R.T.: 5.742 min
 Delta R.T.: 0.000 min
 Response: 743797
 Conc: 13.51 ng/ml



#27 AR-1254-2

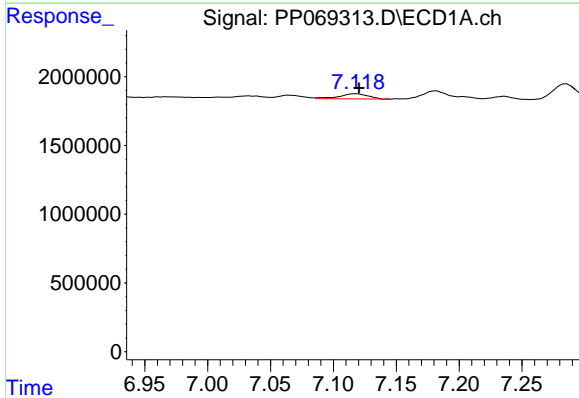
R.T.: 6.757 min
 Delta R.T.: 0.000 min
 Response: 708691
 Conc: 8.83 ng/ml

Instrument :
 ECD_P
 ClientSampleId :
 LOD-MDL-SOIL-01-QT1-2025



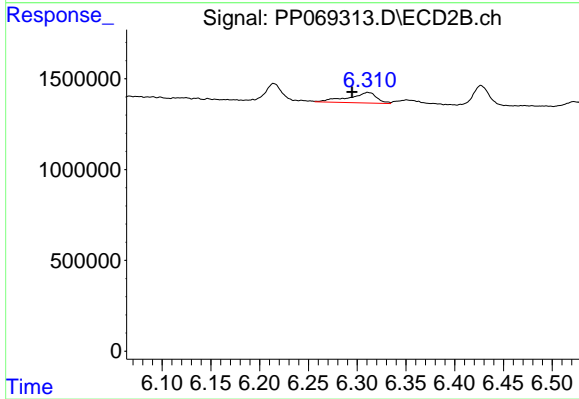
#27 AR-1254-2

R.T.: 5.891 min
 Delta R.T.: 0.001 min
 Response: 562032
 Conc: 11.62 ng/ml



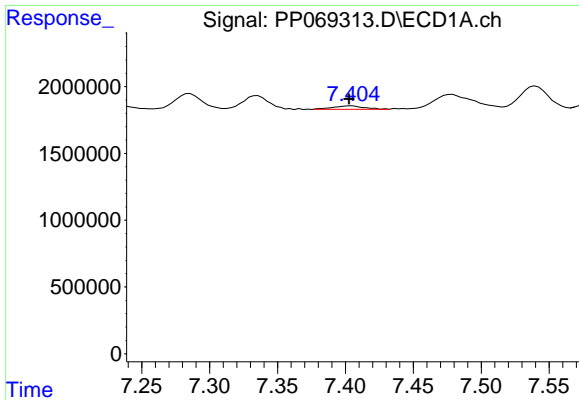
#28 AR-1254-3

R.T.: 7.118 min
 Delta R.T.: -0.002 min
 Response: 591681
 Conc: 7.02 ng/ml



#28 AR-1254-3

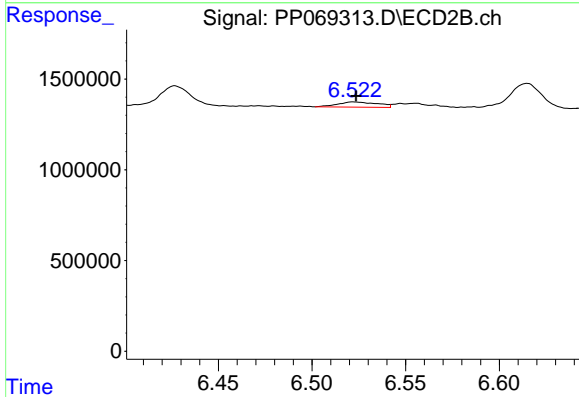
R.T.: 6.311 min
 Delta R.T.: 0.016 min
 Response: 1170855
 Conc: 15.43 ng/ml



#29 AR-1254-4

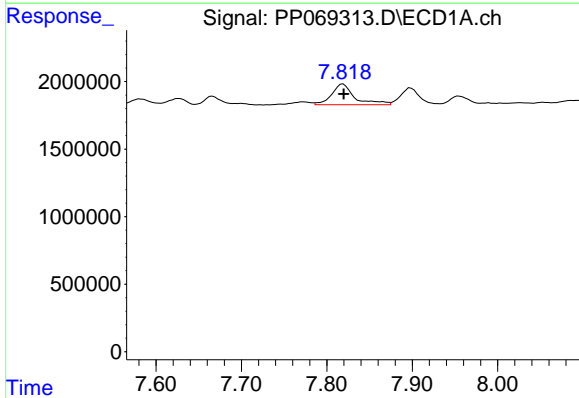
R.T.: 7.404 min
 Delta R.T.: 0.002 min
 Response: 415780
 Conc: 6.10 ng/ml

Instrument :
 ECD_P
ClientSampleId :
 LOD-MDL-SOIL-01-QT1-2025



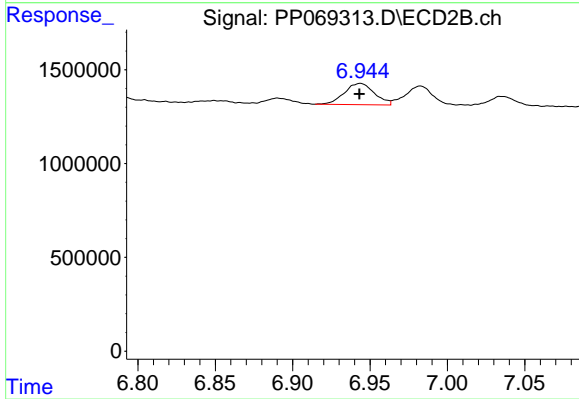
#29 AR-1254-4

R.T.: 6.522 min
 Delta R.T.: -0.001 min
 Response: 430648
 Conc: 8.40 ng/ml



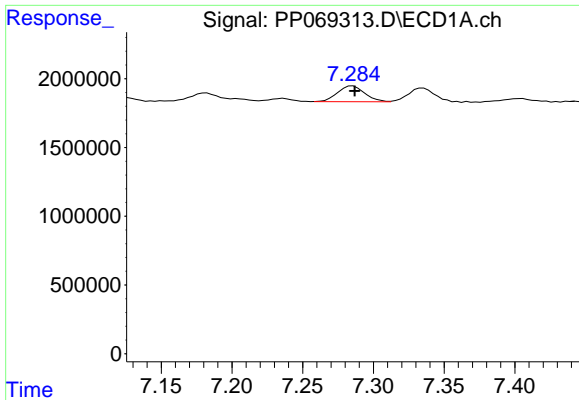
#30 AR-1254-5

R.T.: 7.819 min
 Delta R.T.: 0.000 min
 Response: 2872856
 Conc: 42.22 ng/ml



#30 AR-1254-5

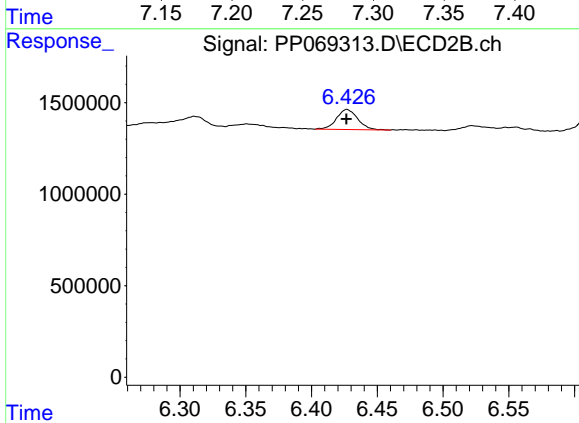
R.T.: 6.944 min
 Delta R.T.: 0.000 min
 Response: 1531535
 Conc: 23.01 ng/ml



#31 AR-1260-1

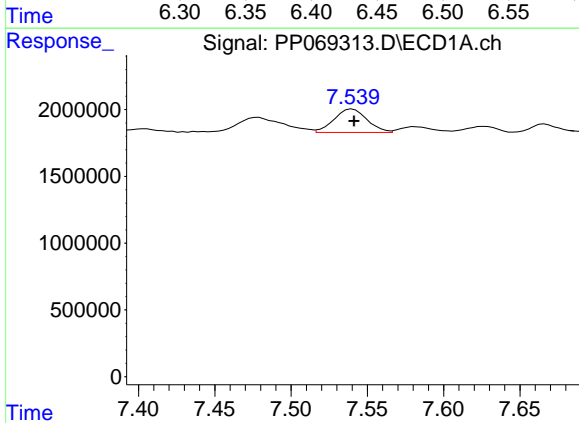
R.T.: 7.285 min
 Delta R.T.: -0.001 min
 Response: 1545159
 Conc: 26.44 ng/ml

Instrument :
 ECD_P
 ClientSampleId :
 LOD-MDL-SOIL-01-QT1-2025



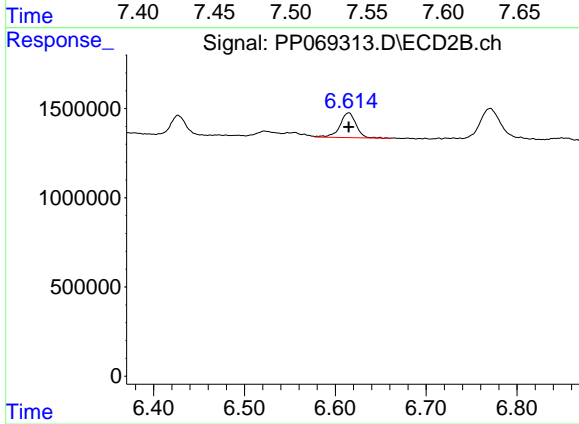
#31 AR-1260-1

R.T.: 6.427 min
 Delta R.T.: 0.000 min
 Response: 1238321
 Conc: 25.68 ng/ml



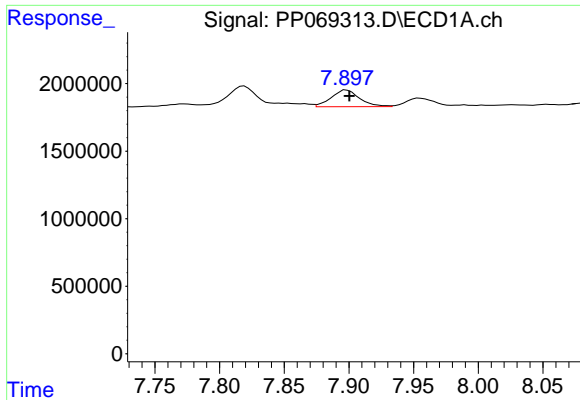
#32 AR-1260-2

R.T.: 7.540 min
 Delta R.T.: 0.000 min
 Response: 2643003
 Conc: 33.97 ng/ml



#32 AR-1260-2

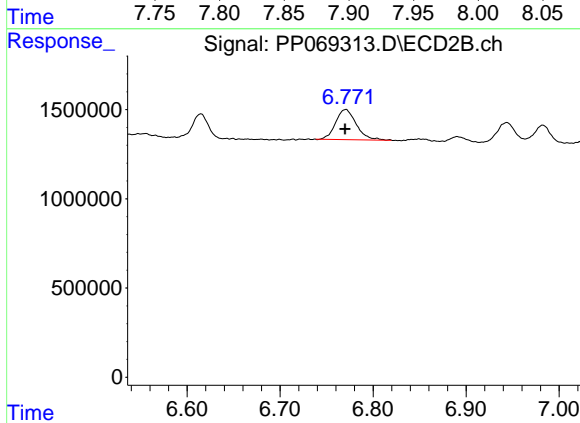
R.T.: 6.615 min
 Delta R.T.: 0.000 min
 Response: 1723837
 Conc: 28.12 ng/ml



#33 AR-1260-3

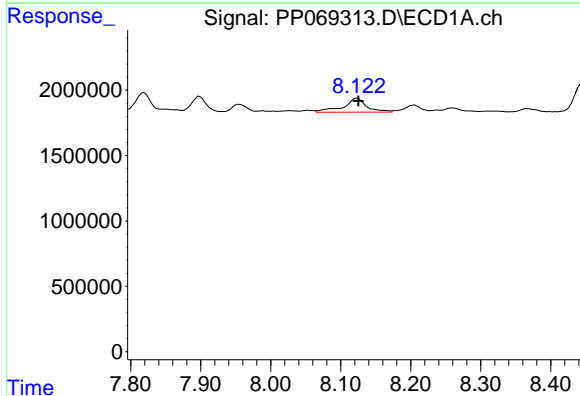
R.T.: 7.898 min
 Delta R.T.: -0.002 min
 Response: 1874758
 Conc: 29.99 ng/ml

Instrument :
 ECD_P
ClientSampleId :
 LOD-MDL-SOIL-01-QT1-2025



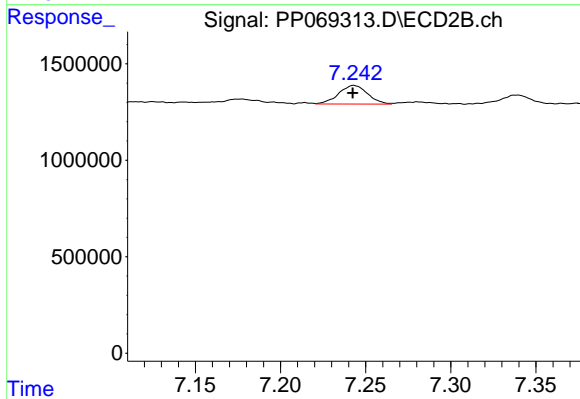
#33 AR-1260-3

R.T.: 6.771 min
 Delta R.T.: 0.000 min
 Response: 2604920
 Conc: 43.30 ng/ml



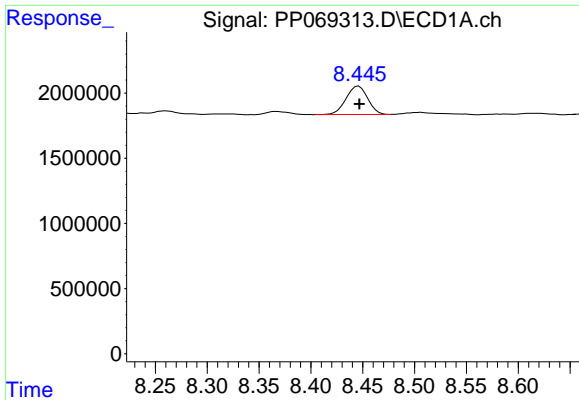
#34 AR-1260-4

R.T.: 8.124 min
 Delta R.T.: -0.002 min
 Response: 2514765
 Conc: 38.12 ng/ml



#34 AR-1260-4

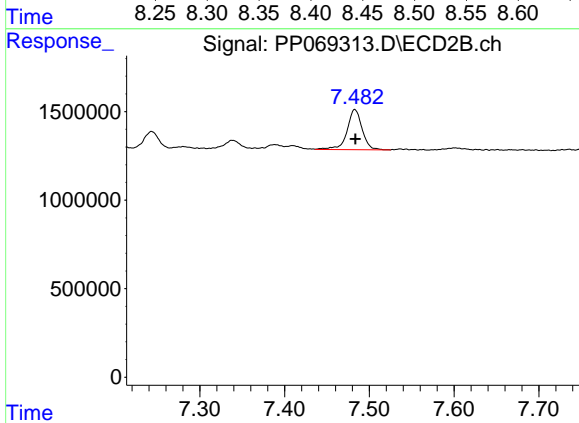
R.T.: 7.243 min
 Delta R.T.: 0.000 min
 Response: 1143779
 Conc: 24.61 ng/ml



#35 AR-1260-5

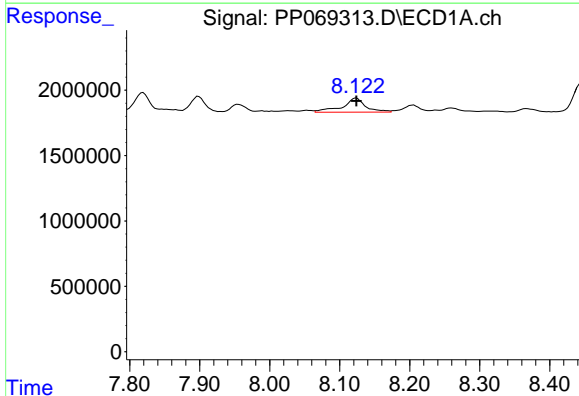
R.T.: 8.446 min
 Delta R.T.: 0.000 min
 Response: 3178609
 Conc: 24.28 ng/ml

Instrument :
 ECD_P
 ClientSampleId :
 LOD-MDL-SOIL-01-QT1-2025



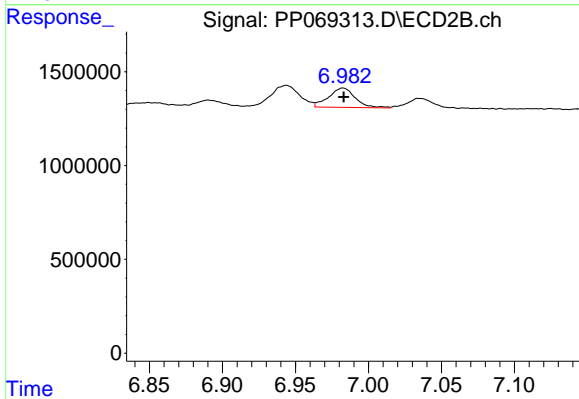
#35 AR-1260-5

R.T.: 7.483 min
 Delta R.T.: 0.000 min
 Response: 2810592
 Conc: 25.29 ng/ml



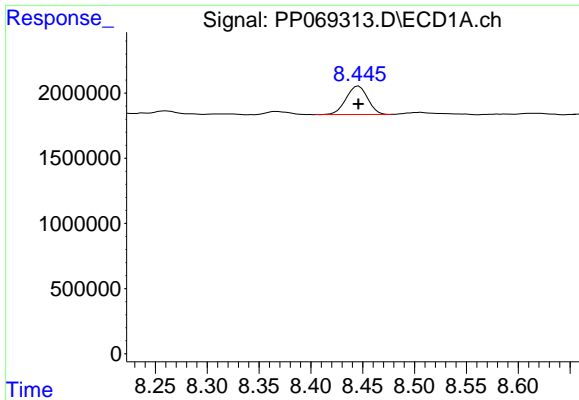
#36 AR-1262-1

R.T.: 8.124 min
 Delta R.T.: 0.000 min
 Response: 2514765
 Conc: 31.83 ng/ml



#36 AR-1262-1

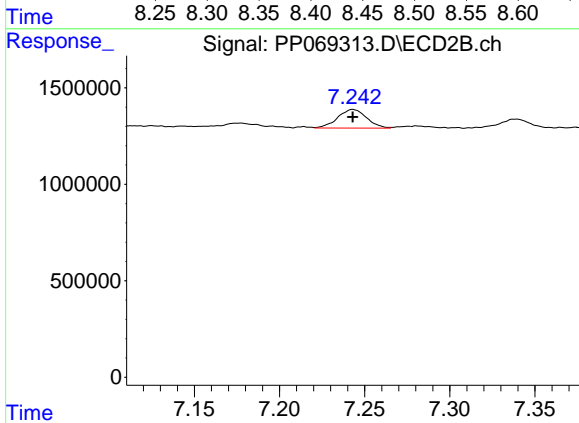
R.T.: 6.983 min
 Delta R.T.: 0.000 min
 Response: 1301949
 Conc: 18.33 ng/ml



#37 AR-1262-2

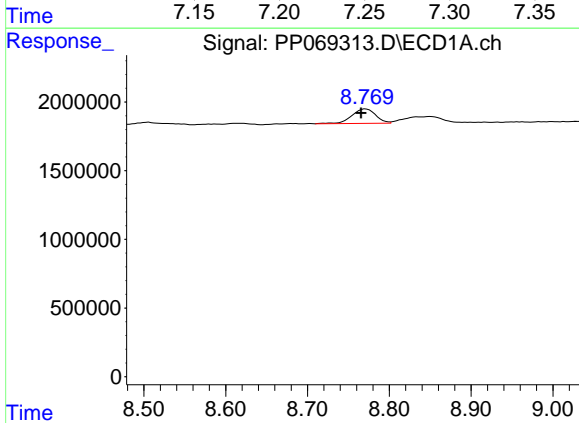
R.T.: 8.446 min
 Delta R.T.: 0.000 min
 Response: 3178609
 Conc: 20.79 ng/ml

Instrument :
 ECD_P
ClientSampleId :
 LOD-MDL-SOIL-01-QT1-2025



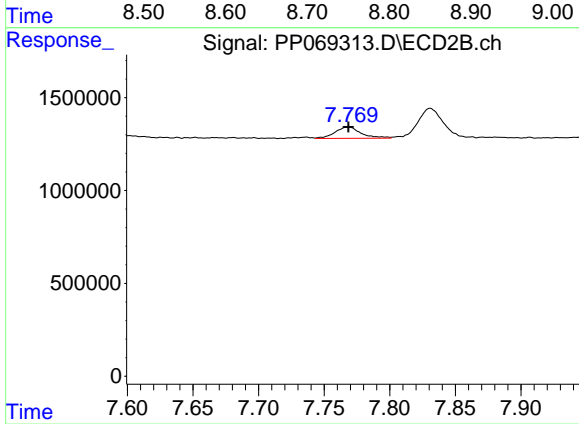
#37 AR-1262-2

R.T.: 7.243 min
 Delta R.T.: 0.000 min
 Response: 1143779
 Conc: 18.76 ng/ml



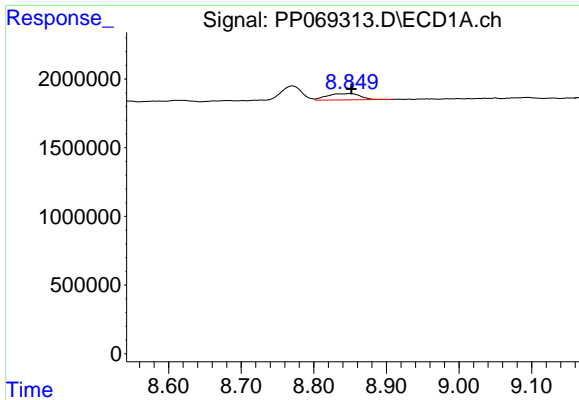
#38 AR-1262-3

R.T.: 8.771 min
 Delta R.T.: 0.006 min
 Response: 2116763
 Conc: 19.92 ng/ml



#38 AR-1262-3

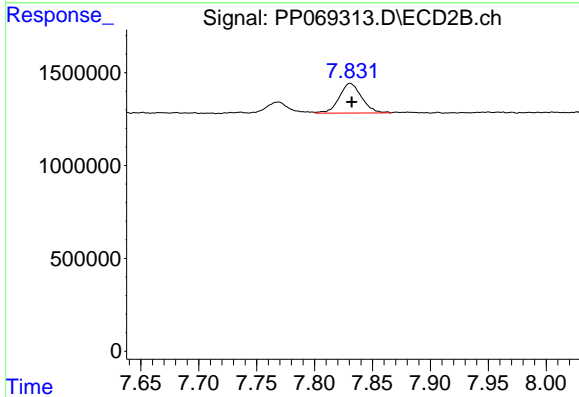
R.T.: 7.769 min
 Delta R.T.: 0.000 min
 Response: 836966
 Conc: 16.00 ng/ml



#39 AR-1262-4

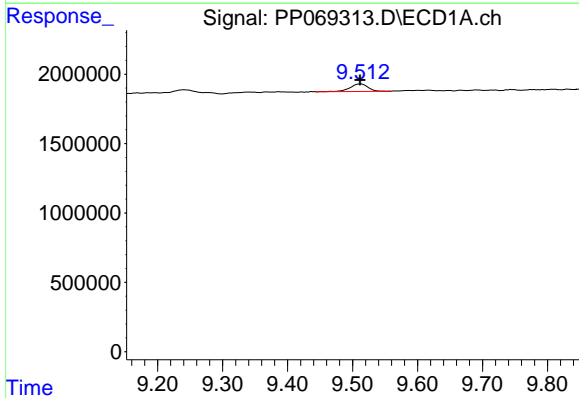
R.T.: 8.850 min
 Delta R.T.: -0.001 min
 Response: 1462924
 Conc: 17.89 ng/ml

Instrument :
 ECD_P
 ClientSampleId :
 LOD-MDL-SOIL-01-QT1-2025



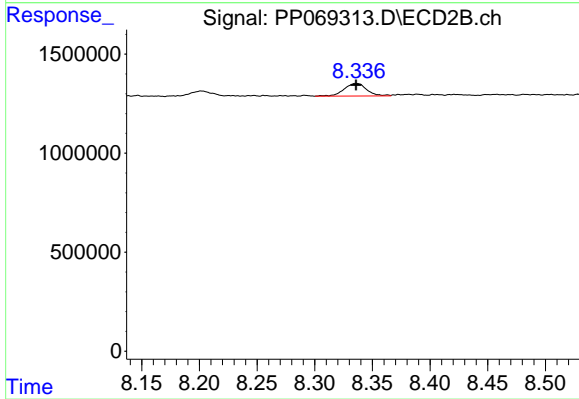
#39 AR-1262-4

R.T.: 7.831 min
 Delta R.T.: -0.001 min
 Response: 2150521
 Conc: 23.26 ng/ml



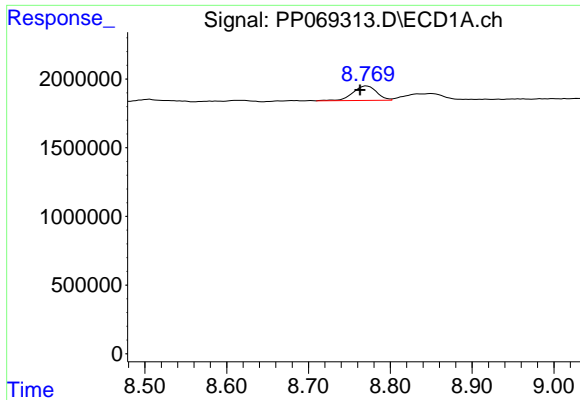
#40 AR-1262-5

R.T.: 9.513 min
 Delta R.T.: 0.002 min
 Response: 1009526
 Conc: 17.83 ng/ml



#40 AR-1262-5

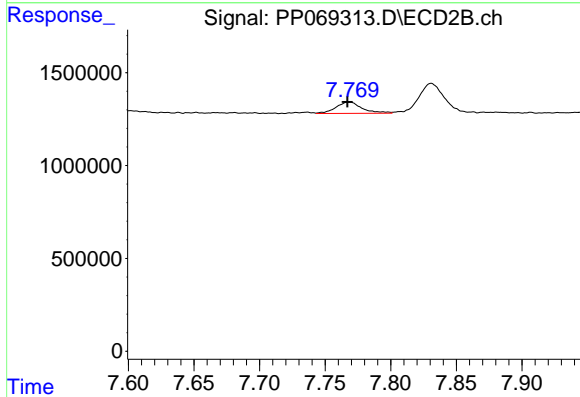
R.T.: 8.336 min
 Delta R.T.: 0.000 min
 Response: 869133
 Conc: 18.19 ng/ml



#41 AR-1268-1

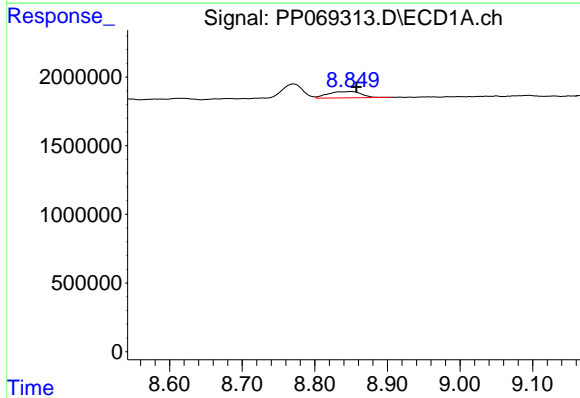
R.T.: 8.771 min
 Delta R.T.: 0.008 min
 Response: 2116763
 Conc: 11.99 ng/ml

Instrument :
 ECD_P
ClientSampleId :
 LOD-MDL-SOIL-01-QT1-2025



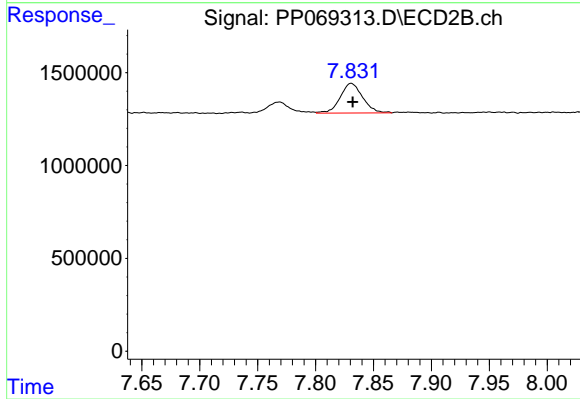
#41 AR-1268-1

R.T.: 7.769 min
 Delta R.T.: 0.002 min
 Response: 836966
 Conc: 5.77 ng/ml



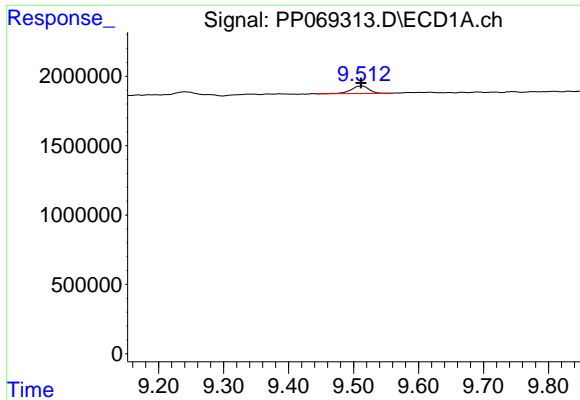
#42 AR-1268-2

R.T.: 8.850 min
 Delta R.T.: -0.007 min
 Response: 1462924
 Conc: 9.30 ng/ml



#42 AR-1268-2

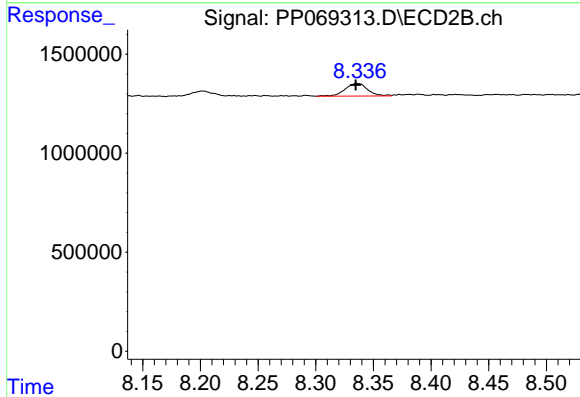
R.T.: 7.831 min
 Delta R.T.: -0.001 min
 Response: 2150521
 Conc: 16.19 ng/ml



#44 AR-1268-4

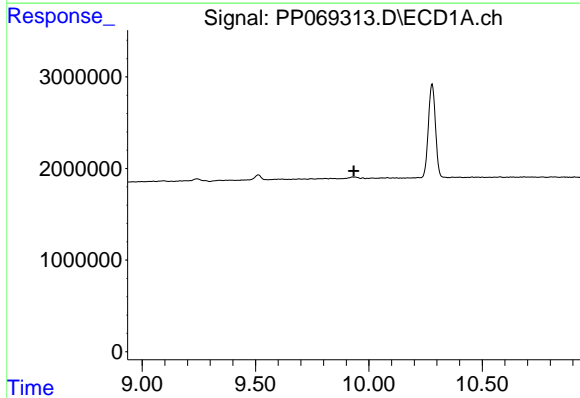
R.T.: 9.513 min
 Delta R.T.: 0.002 min
 Response: 1009526
 Conc: 17.19 ng/ml

Instrument :
 ECD_P
 ClientSampleId :
 LOD-MDL-SOIL-01-QT1-2025



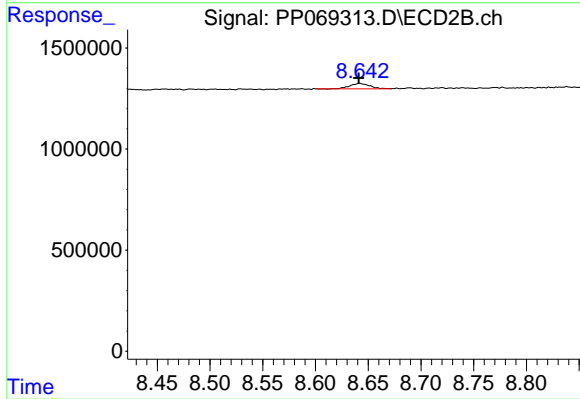
#44 AR-1268-4

R.T.: 8.336 min
 Delta R.T.: 0.002 min
 Response: 869133
 Conc: 16.69 ng/ml



#45 AR-1268-5

R.T.: 0.000 min
 Exp R.T. : 9.933 min
 Response: 0
 Conc: N.D.



#45 AR-1268-5

R.T.: 8.642 min
 Delta R.T.: 0.000 min
 Response: 334232
 Conc: 0.94 ng/ml