

Data Path : Z:\pestpcbsrv\HPCHEM1\ECD_P\Data\PP013023\
 Data File : PP055097.D
 Signal(s) : Signal #1: ECD1A.ch Signal #2: ECD2B.ch
 Acq On : 31 Jan 2023 00:05
 Operator : YP\AJ
 Sample : 01334-01 10X
 Misc :
 ALS Vial : 39 Sample Multiplier: 1

Instrument :
 ECD_P
 ClientSampleId :
 KMA545V-1-1

Integration File signal 1: autoint1.e
 Integration File signal 2: autoint2.e
 Quant Time: Jan 31 03:48:04 2023
 Quant Method : Z:\pestpcbsrv\HPCHEM1\ECD_P\methods\PP012423.M
 Quant Title : GC EXTRACTABLES
 QLast Update : Tue Jan 24 03:37:45 2023
 Response via : Initial Calibration
 Integrator: ChemStation

Volume Inj. : 2 µl
 Signal #1 Phase : ZB-MR1 Signal #2 Phase: ZB-MR2
 Signal #1 Info : 30Mx0.32mmx 0.50µ Signal #2 Info : 30M x 0.32mm x 0.25µm

Compound	RT#1	RT#2	Resp#1	Resp#2	ng/ml	ng/ml

System Monitoring Compounds						
1) SA Tetrachlo...	4.329	3.575	2587391	2227886	1.488	1.484
2) SA Decachlor...	10.082	8.589	3495564	2983425	2.019	2.209

Target Compounds

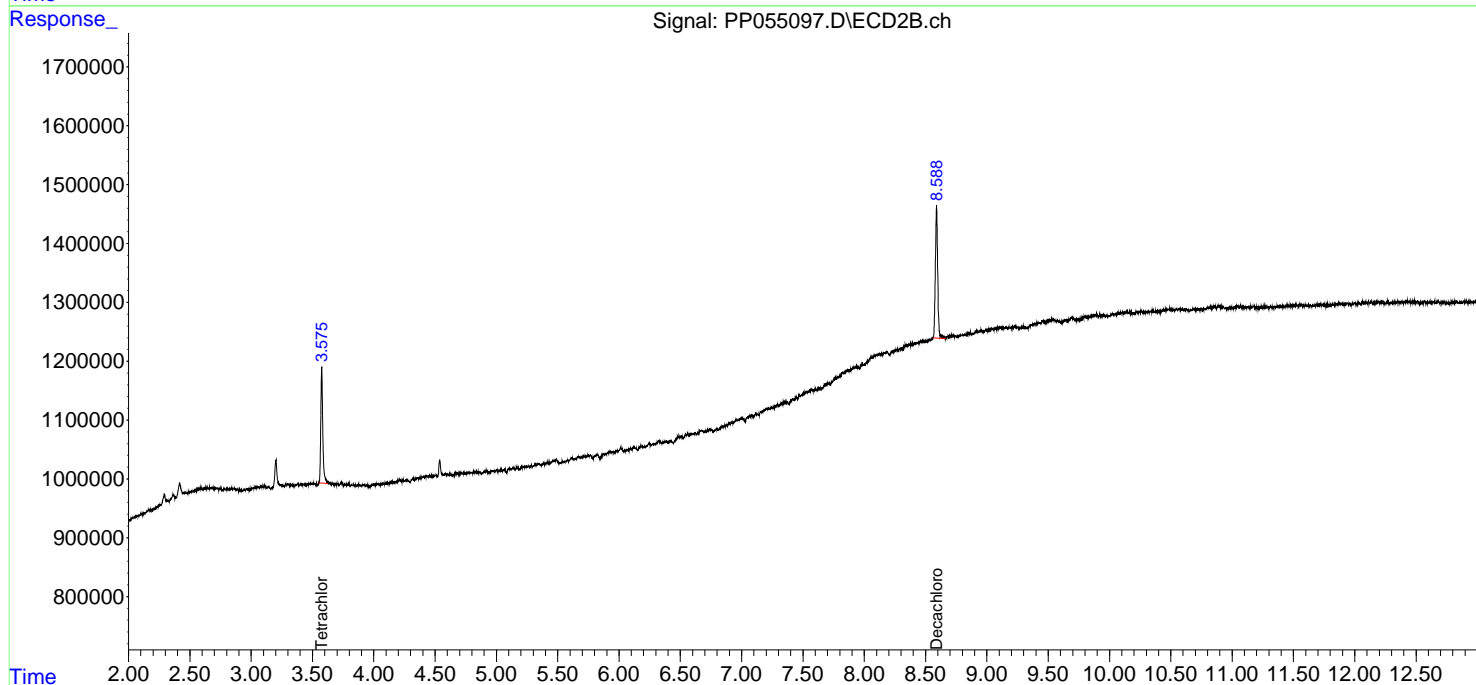
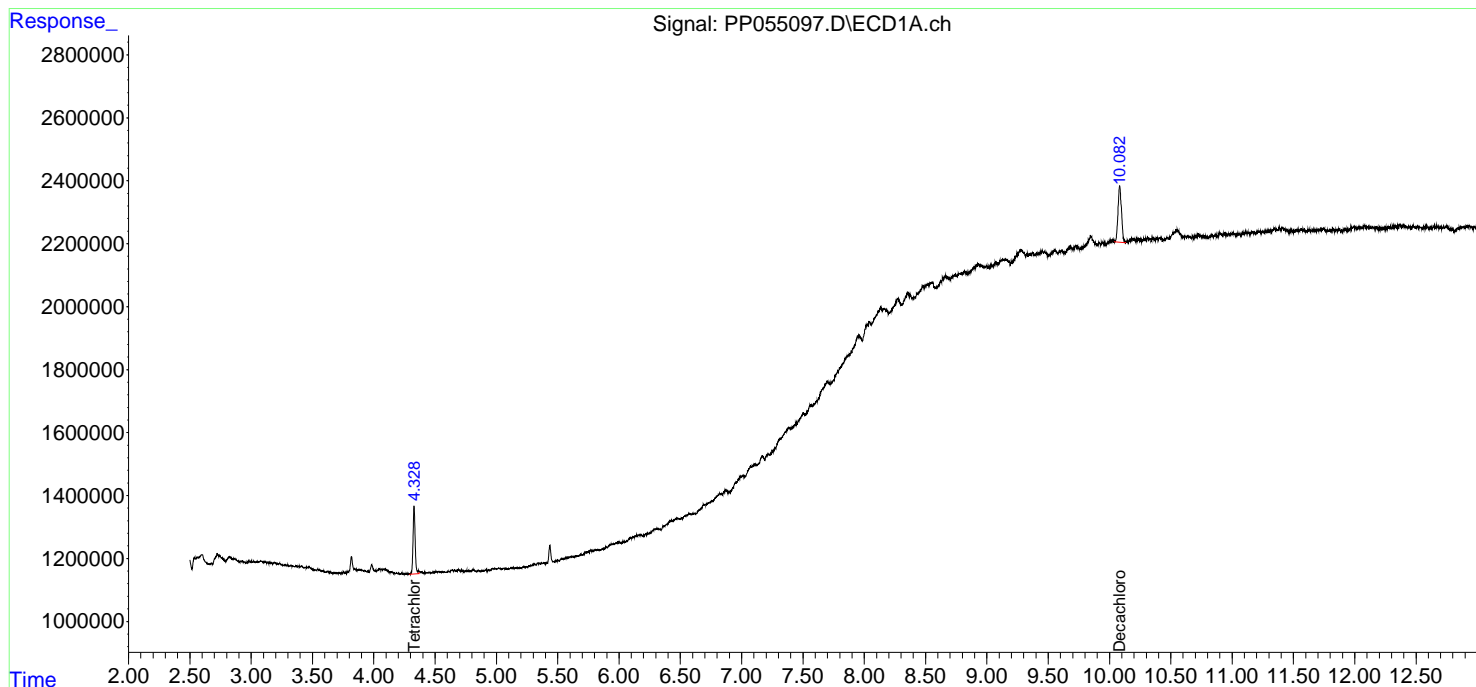
(f)=RT Delta > 1/2 Window (#)=Amounts differ by > 25% (m)=manual int.

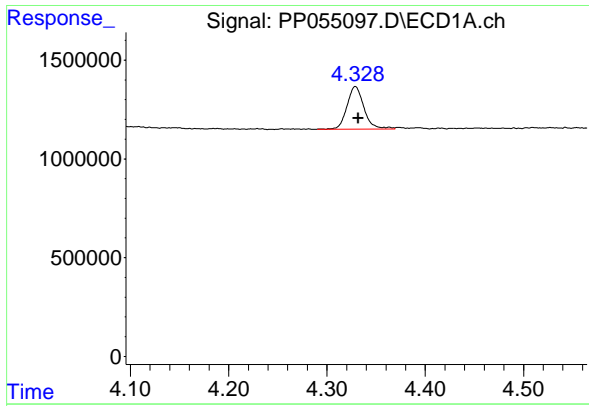
Data Path : Z:\pestpcbsrv\HPCHEM1\ECD_P\Data\PP013023\
 Data File : PP055097.D
 Signal(s) : Signal #1: ECD1A.ch Signal #2: ECD2B.ch
 Acq On : 31 Jan 2023 00:05
 Operator : YP\AJ
 Sample : 01334-01 10X
 Misc :
 ALS Vial : 39 Sample Multiplier: 1

Instrument :
 ECD_P
 ClientSampleId :
 KMA545V-1-1

Integration File signal 1: autoint1.e
 Integration File signal 2: autoint2.e
 Quant Time: Jan 31 03:48:04 2023
 Quant Method : Z:\pestpcbsrv\HPCHEM1\ECD_P\methods\PP012423.M
 Quant Title : GC EXTRACTABLES
 QLast Update : Tue Jan 24 03:37:45 2023
 Response via : Initial Calibration
 Integrator: ChemStation

Volume Inj. : 2 µl
 Signal #1 Phase : ZB-MR1 Signal #2 Phase: ZB-MR2
 Signal #1 Info : 30Mx0.32mmx 0.50µm Signal #2 Info : 30M x 0.32mm x 0.25µm

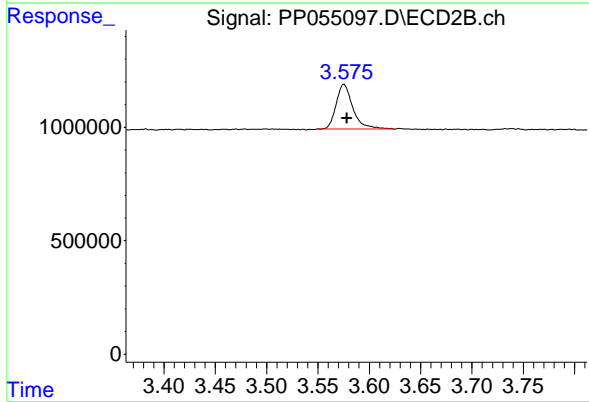




#1 Tetrachloro-m-xylene

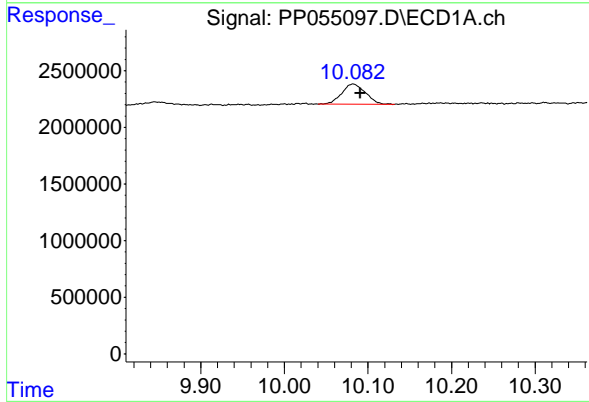
R.T.: 4.329 min
 Delta R.T.: -0.003 min
 Response: 2587391
 Conc: 1.49 ng/ml

Instrument :
 ECD_P
 Client Sample Id :
 KMA545V-1-1



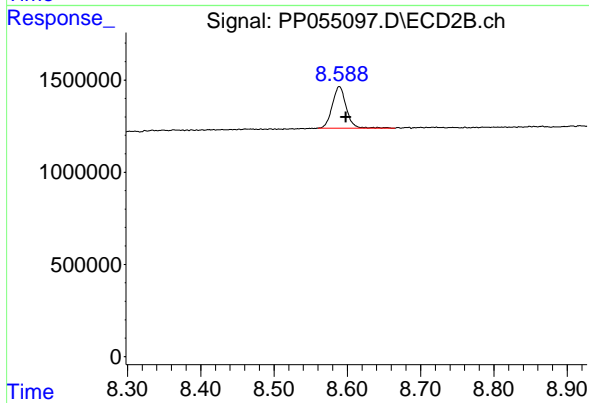
#1 Tetrachloro-m-xylene

R.T.: 3.575 min
 Delta R.T.: -0.003 min
 Response: 2227886
 Conc: 1.48 ng/ml



#2 Decachlorobiphenyl

R.T.: 10.082 min
 Delta R.T.: -0.009 min
 Response: 3495564
 Conc: 2.02 ng/ml



#2 Decachlorobiphenyl

R.T.: 8.589 min
 Delta R.T.: -0.009 min
 Response: 2983425
 Conc: 2.21 ng/ml