

Data Path : Z:\pestpcbsrv\HPCHEM1\ECD\_P\Data\PP013023\  
 Data File : PP055106.D  
 Signal(s) : Signal #1: ECD1A.ch Signal #2: ECD2B.ch  
 Acq On : 31 Jan 2023 02:32  
 Operator : YP\AJ  
 Sample : 01334-10 10X  
 Misc :  
 ALS Vial : 48 Sample Multiplier: 1

**Instrument :**  
 ECD\_P  
**ClientSampleId :**  
 BC254704-2-2

Integration File signal 1: autoint1.e  
 Integration File signal 2: autoint2.e  
 Quant Time: Jan 31 03:53:07 2023  
 Quant Method : Z:\pestpcbsrv\HPCHEM1\ECD\_P\methods\PP012423.M  
 Quant Title : GC EXTRACTABLES  
 QLast Update : Tue Jan 24 03:37:45 2023  
 Response via : Initial Calibration  
 Integrator: ChemStation

Volume Inj. : 2 µl  
 Signal #1 Phase : ZB-MR1 Signal #2 Phase: ZB-MR2  
 Signal #1 Info : 30Mx0.32mmx 0.50µ Signal #2 Info : 30M x 0.32mm x 0.25µm

Compound	RT#1	RT#2	Resp#1	Resp#2	ng/ml	ng/ml
-----						
System Monitoring Compounds						
1) SA Tetrachlo...	4.329	3.575	2621752	2334232	1.508	1.555
2) SA Decachlor...	10.081	8.588	3503552	2725084	2.023	2.018

Target Compounds

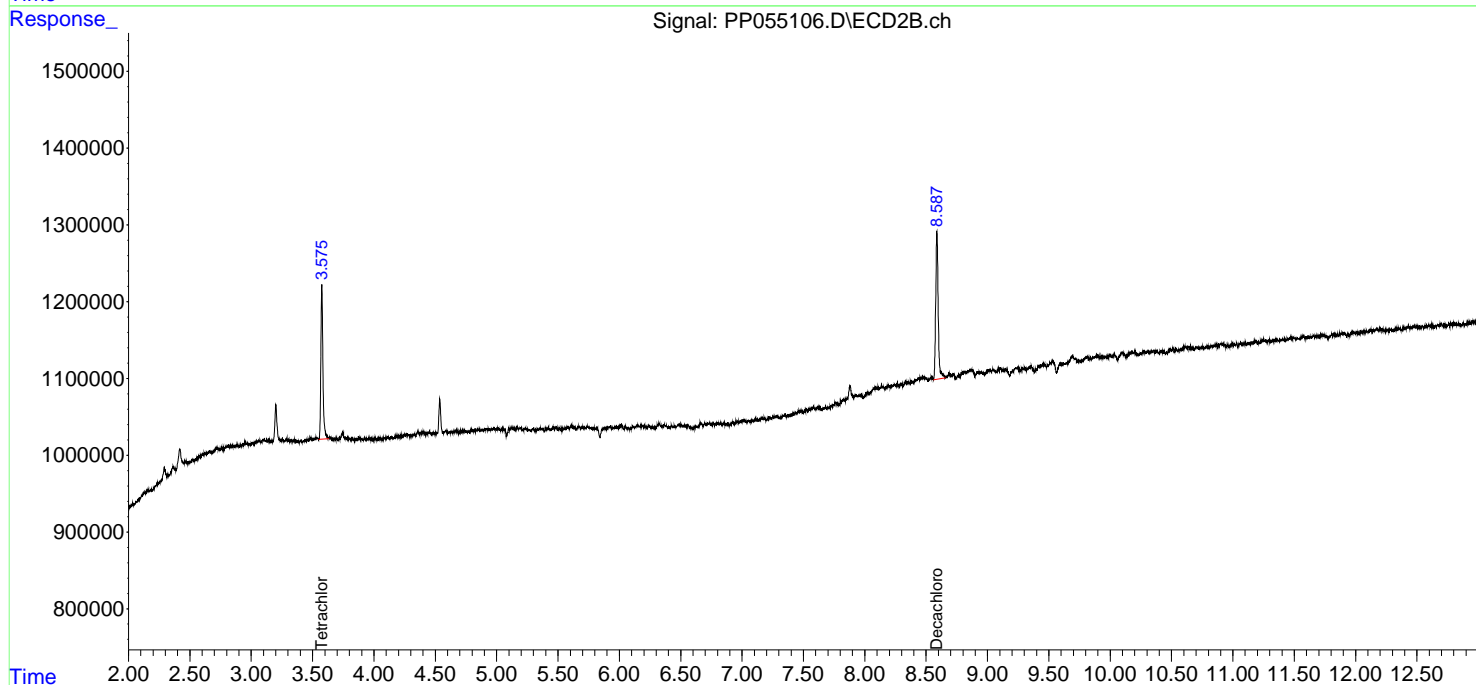
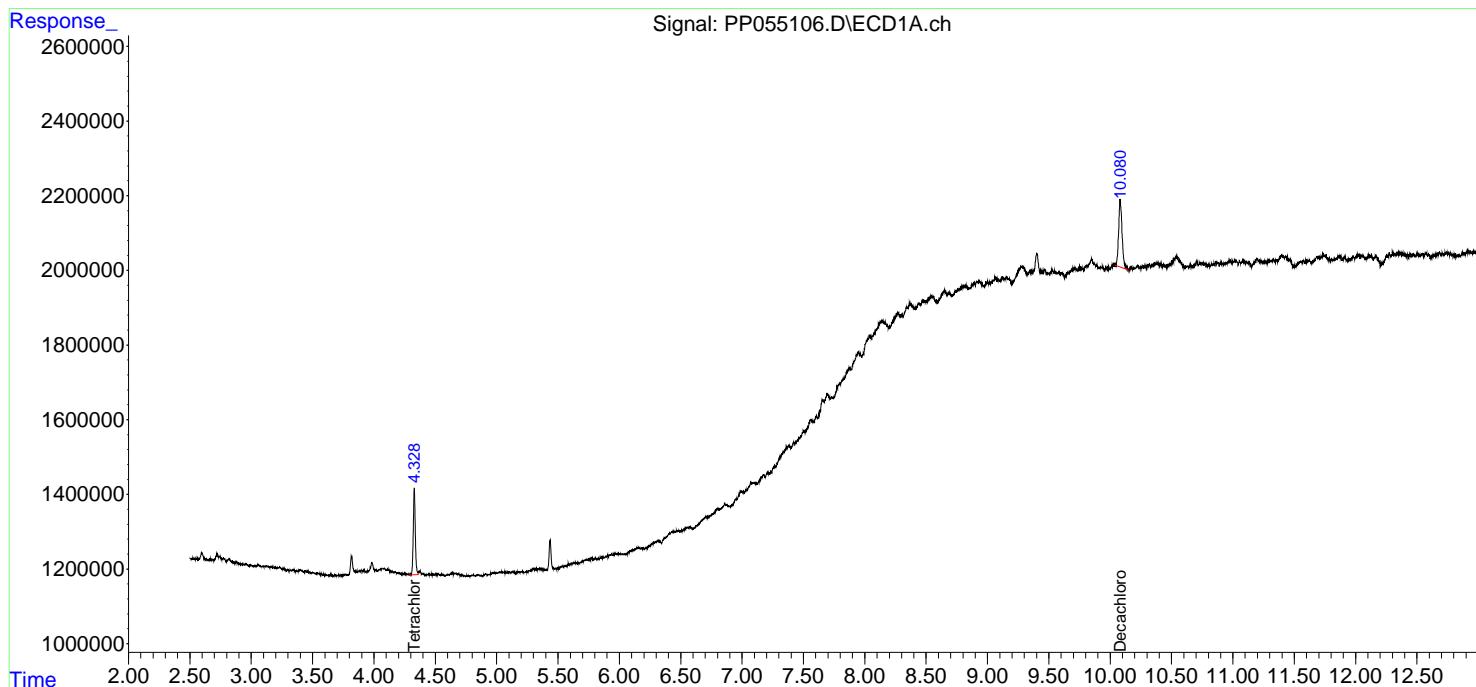
(f)=RT Delta > 1/2 Window (#)=Amounts differ by > 25% (m)=manual int.

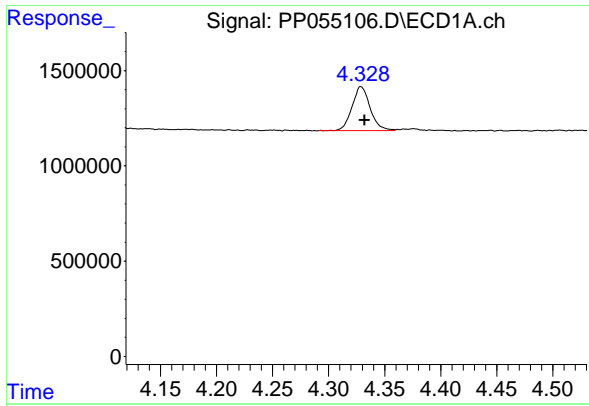
Data Path : Z:\pestpcbsrv\HPCHEM1\ECD\_P\Data\PP013023\  
 Data File : PP055106.D  
 Signal(s) : Signal #1: ECD1A.ch Signal #2: ECD2B.ch  
 Acq On : 31 Jan 2023 02:32  
 Operator : YP\AJ  
 Sample : 01334-10 10X  
 Misc :  
 ALS Vial : 48 Sample Multiplier: 1

Instrument :  
 ECD\_P  
 ClientSampleId :  
 BC254704-2-2

Integration File signal 1: autoint1.e  
 Integration File signal 2: autoint2.e  
 Quant Time: Jan 31 03:53:07 2023  
 Quant Method : Z:\pestpcbsrv\HPCHEM1\ECD\_P\methods\PP012423.M  
 Quant Title : GC EXTRACTABLES  
 QLast Update : Tue Jan 24 03:37:45 2023  
 Response via : Initial Calibration  
 Integrator: ChemStation

Volume Inj. : 2 µl  
 Signal #1 Phase : ZB-MR1 Signal #2 Phase: ZB-MR2  
 Signal #1 Info : 30Mx0.32mmx 0.50µm Signal #2 Info : 30M x 0.32mm x 0.25µm

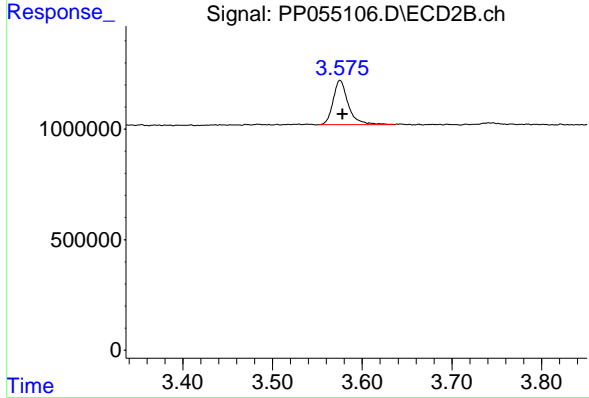




#1 Tetrachloro-m-xylene

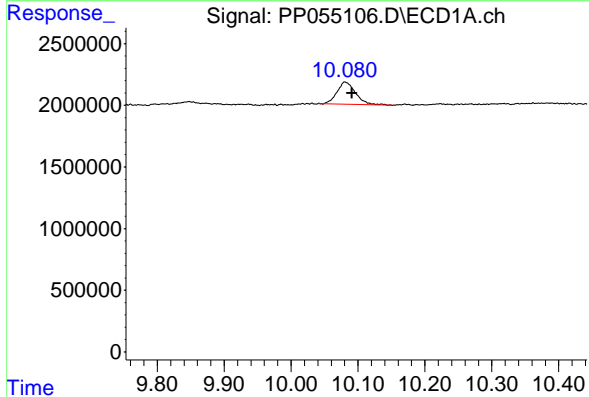
R.T.: 4.329 min  
 Delta R.T.: -0.003 min  
 Response: 2621752  
 Conc: 1.51 ng/ml

Instrument :  
 ECD\_P  
 ClientSampleId :  
 BC254704-2-2



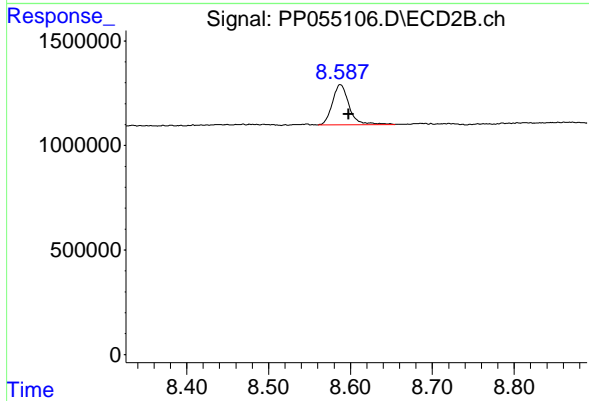
#1 Tetrachloro-m-xylene

R.T.: 3.575 min  
 Delta R.T.: -0.003 min  
 Response: 2334232  
 Conc: 1.55 ng/ml



#2 Decachlorobiphenyl

R.T.: 10.081 min  
 Delta R.T.: -0.010 min  
 Response: 3503552  
 Conc: 2.02 ng/ml



#2 Decachlorobiphenyl

R.T.: 8.588 min  
 Delta R.T.: -0.011 min  
 Response: 2725084  
 Conc: 2.02 ng/ml