

Data Path : Z:\pestpcbsrv\HPCHEM1\ECD_P\Data\PP013123\
 Data File : PP055182.D
 Signal(s) : Signal #1: ECD1A.ch Signal #2: ECD2B.ch
 Acq On : 01 Feb 2023 01:30
 Operator : YP\AJ
 Sample : 01366-01MSD
 Misc :
 ALS Vial : 43 Sample Multiplier: 1

Instrument :
 ECD_P
ClientSampleId :
 NB-07-013023MSD

Manual Integrations
APPROVED

Reviewed By :Yogesh Patel 02/01/2023
 Supervised By :Ankita Jodhani 02/01/2023

Integration File signal 1: autoint1.e
 Integration File signal 2: autoint2.e
 Quant Time: Feb 01 06:37:05 2023
 Quant Method : Z:\pestpcbsrv\HPCHEM1\ECD_P\methods\PP012423.M
 Quant Title : GC EXTRACTABLES
 QLast Update : Tue Jan 24 03:37:45 2023
 Response via : Initial Calibration
 Integrator: ChemStation

Volume Inj. : 2 µl
 Signal #1 Phase : ZB-MR1 Signal #2 Phase: ZB-MR2
 Signal #1 Info : 30Mx0.32mmx 0.50µ Signal #2 Info : 30M x 0.32mm x 0.25µm

Compound	RT#1	RT#2	Resp#1	Resp#2	ng/ml	ng/ml

System Monitoring Compounds						
1) SA Tetrachlo...	4.328	3.575	30164215	24755989	17.348	16.491
2) SA Decachlor...	10.081	8.587	31343964	25126143	18.100	18.604m
Target Compounds						
3) L1 AR-1016-1	5.499	4.659	26913031	18654465	400.431	376.904
4) L1 AR-1016-2	5.521	4.678	37673175	26432068	393.128	381.861
5) L1 AR-1016-3	5.583	4.853	22657808	17547054	378.789	471.738
6) L1 AR-1016-4	5.682	4.897	18630885	13921170	388.807	443.035
7) L1 AR-1016-5	5.977	5.109	17426239	17420847	343.888	426.099m
31) L7 AR-1260-1	7.110	6.145	38617153	32689372	405.104	421.556
32) L7 AR-1260-2	7.368	6.334	44523931	38611231	395.606	429.500
33) L7 AR-1260-3	7.730	6.487	29026053	34800644	360.488	409.850
34) L7 AR-1260-4	7.955	6.961	36325098	25806274	374.189	360.409
35) L7 AR-1260-5	8.272	7.204	62230948	56464714	349.906	367.283

(f)=RT Delta > 1/2 Window (#)=Amounts differ by > 25% (m)=manual int.

Data Path : Z:\pestpcbsrv\HPCHEM1\ECD_P\Data\PP013123\
 Data File : PP055182.D
 Signal(s) : Signal #1: ECD1A.ch Signal #2: ECD2B.ch
 Acq On : 01 Feb 2023 01:30
 Operator : YP\AJ
 Sample : 01366-01MSD
 Misc :
 ALS Vial : 43 Sample Multiplier: 1

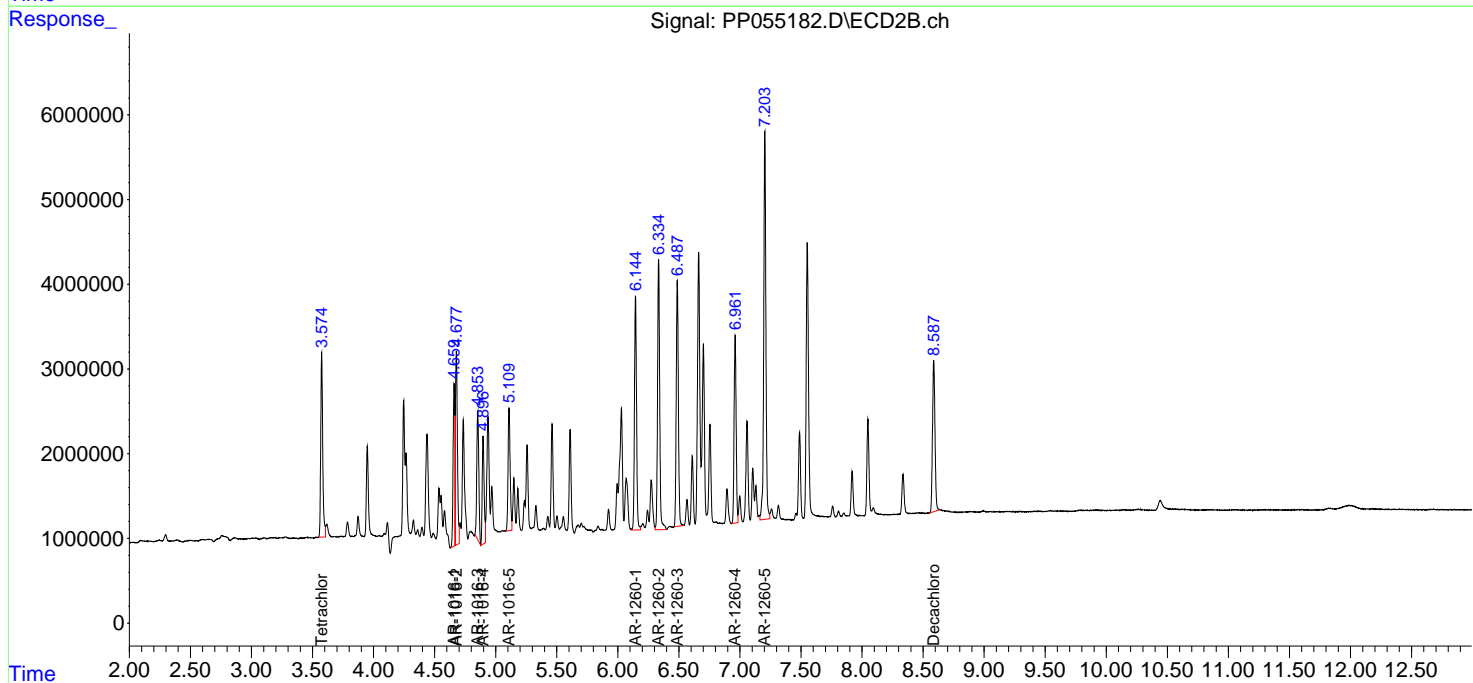
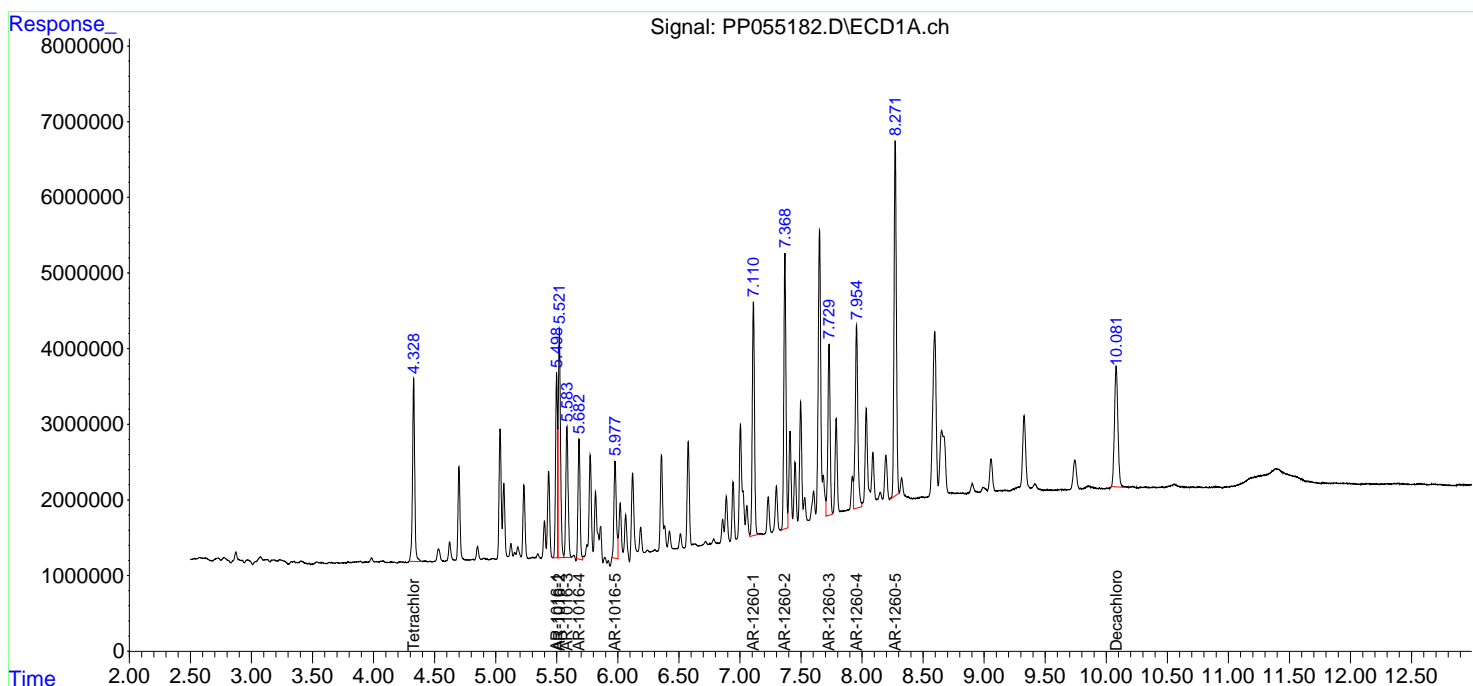
Instrument :
 ECD_P
 ClientSampleId :
 NB-07-013023MSD

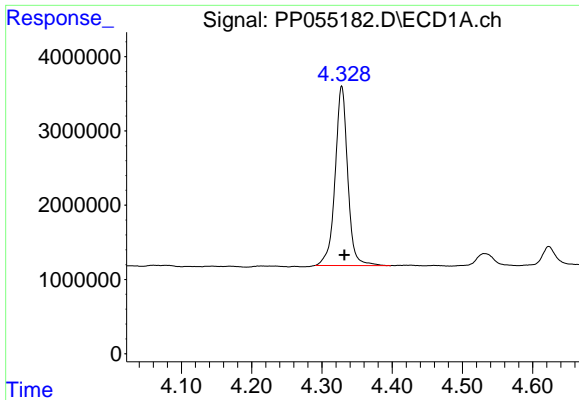
Manual Integrations
 APPROVED

Reviewed By :Yogesh Patel 02/01/2023
 Supervised By :Ankita Jodhani 02/01/2023

Integration File signal 1: autoint1.e
 Integration File signal 2: autoint2.e
 Quant Time: Feb 01 06:37:05 2023
 Quant Method : Z:\pestpcbsrv\HPCHEM1\ECD_P\methods\PP012423.M
 Quant Title : GC EXTRACTABLES
 QLast Update : Tue Jan 24 03:37:45 2023
 Response via : Initial Calibration
 Integrator: ChemStation

Volume Inj. : 2 µl
 Signal #1 Phase : ZB-MR1 Signal #2 Phase: ZB-MR2
 Signal #1 Info : 30Mx0.32mmx 0.50µ Signal #2 Info : 30M x 0.32mm x 0.25µm





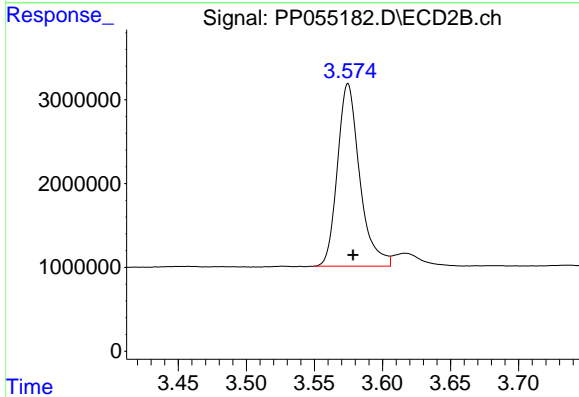
#1 Tetrachloro-m-xylene

R.T.: 4.328 min
 Delta R.T.: -0.004 min
 Response: 30164215
 Conc: 17.35 ng/ml

Instrument :
 ECD_P
 ClientSampleId :
 NB-07-013023MSD

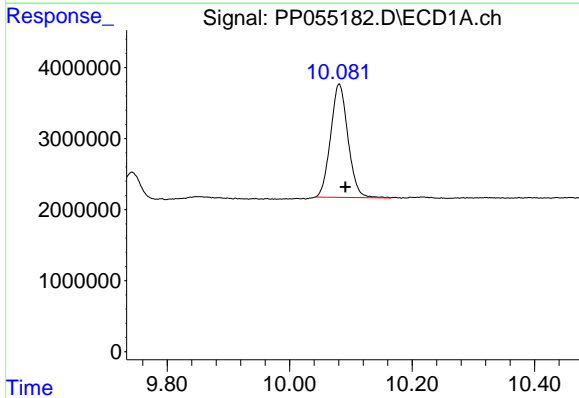
Manual Integrations
 APPROVED

Reviewed By :Yogesh Patel 02/01/2023
 Supervised By :Ankita Jodhani 02/01/2023



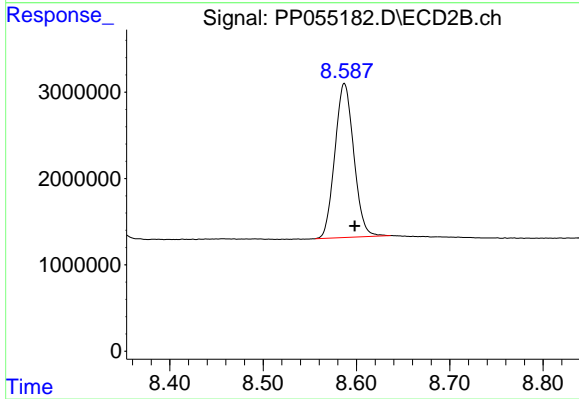
#1 Tetrachloro-m-xylene

R.T.: 3.575 min
 Delta R.T.: -0.004 min
 Response: 24755989
 Conc: 16.49 ng/ml



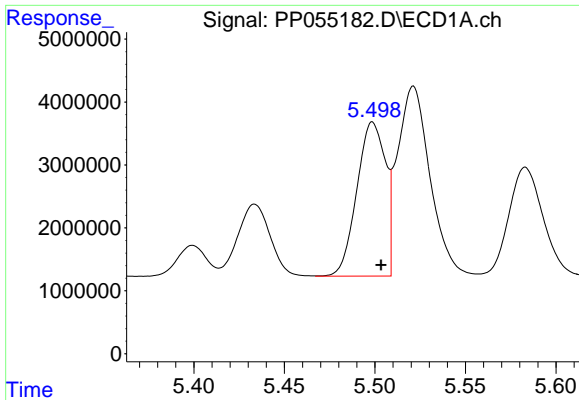
#2 Decachlorobiphenyl

R.T.: 10.081 min
 Delta R.T.: -0.010 min
 Response: 31343964
 Conc: 18.10 ng/ml



#2 Decachlorobiphenyl

R.T.: 8.587 min
 Delta R.T.: -0.012 min
 Response: 25126143
 Conc: 18.60 ng/ml m



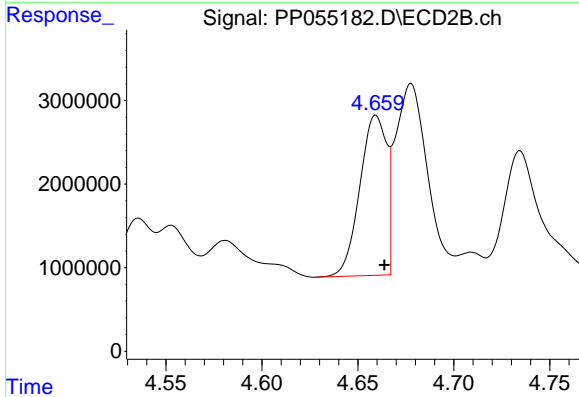
#3 AR-1016-1

R.T.: 5.499 min
 Delta R.T.: -0.005 min
 Response: 26913031
 Conc: 400.43 ng/ml

Instrument : ECD_P
 ClientSampleId : NB-07-013023MSD

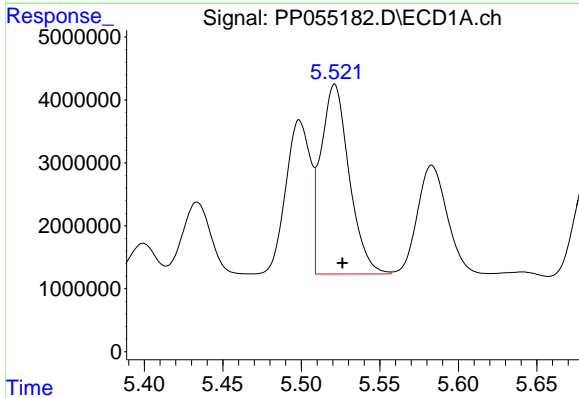
Manual Integrations
 APPROVED

Reviewed By :Yogesh Patel 02/01/2023
 Supervised By :Ankita Jodhani 02/01/2023



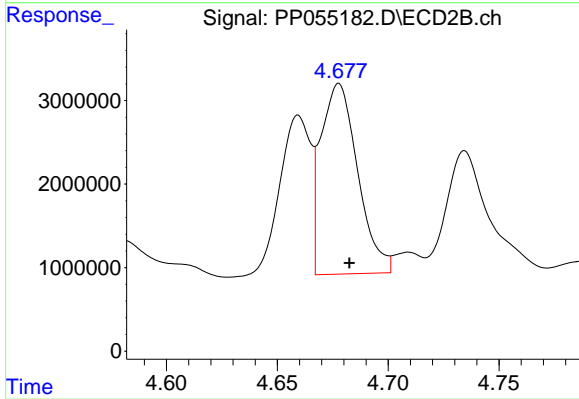
#3 AR-1016-1

R.T.: 4.659 min
 Delta R.T.: -0.004 min
 Response: 18654465
 Conc: 376.90 ng/ml



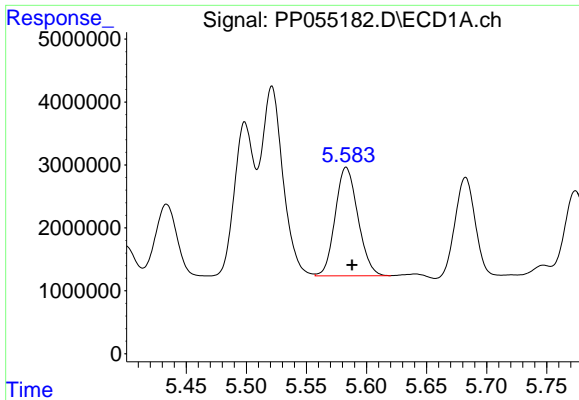
#4 AR-1016-2

R.T.: 5.521 min
 Delta R.T.: -0.005 min
 Response: 37673175
 Conc: 393.13 ng/ml



#4 AR-1016-2

R.T.: 4.678 min
 Delta R.T.: -0.005 min
 Response: 26432068
 Conc: 381.86 ng/ml



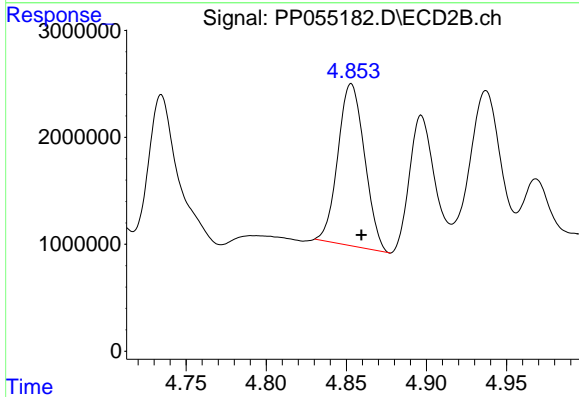
#5 AR-1016-3

R.T.: 5.583 min
 Delta R.T.: -0.005 min
 Response: 22657808
 Conc: 378.79 ng/ml

Instrument : ECD_P
 ClientSampleId : NB-07-013023MSD

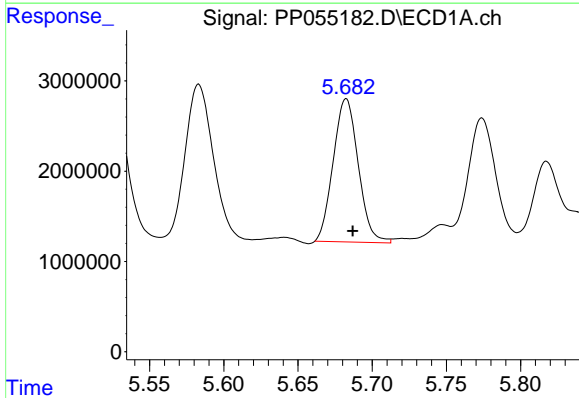
Manual Integrations
 APPROVED

Reviewed By :Yogesh Patel 02/01/2023
 Supervised By :Ankita Jodhani 02/01/2023



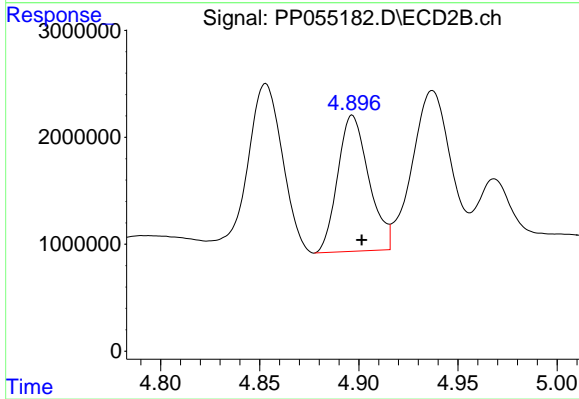
#5 AR-1016-3

R.T.: 4.853 min
 Delta R.T.: -0.006 min
 Response: 17547054
 Conc: 471.74 ng/ml



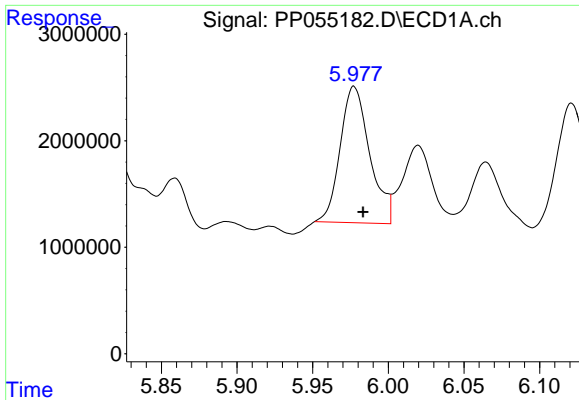
#6 AR-1016-4

R.T.: 5.682 min
 Delta R.T.: -0.004 min
 Response: 18630885
 Conc: 388.81 ng/ml



#6 AR-1016-4

R.T.: 4.897 min
 Delta R.T.: -0.005 min
 Response: 13921170
 Conc: 443.04 ng/ml



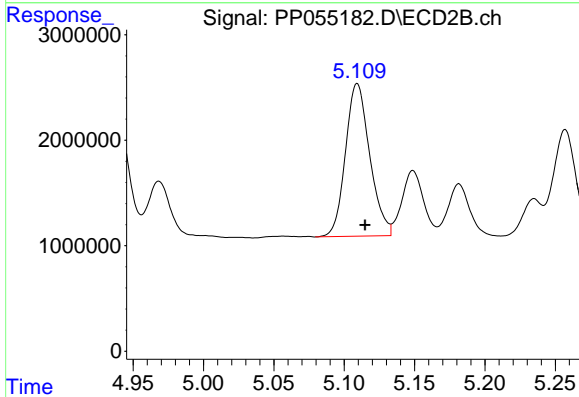
#7 AR-1016-5

R.T.: 5.977 min
 Delta R.T.: -0.006 min
 Response: 17426239
 Conc: 343.89 ng/ml

Instrument : ECD_P
 ClientSampleId : NB-07-013023MSD

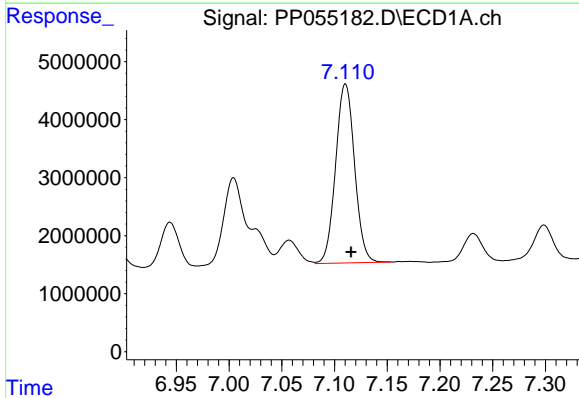
Manual Integrations
 APPROVED

Reviewed By :Yogesh Patel 02/01/2023
 Supervised By :Ankita Jodhani 02/01/2023



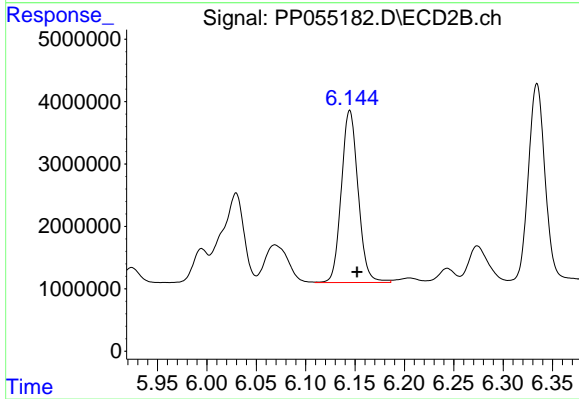
#7 AR-1016-5

R.T.: 5.109 min
 Delta R.T.: -0.006 min
 Response: 17420847
 Conc: 426.10 ng/ml m



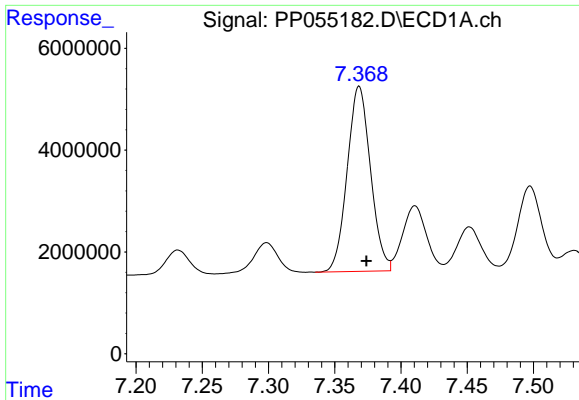
#31 AR-1260-1

R.T.: 7.110 min
 Delta R.T.: -0.005 min
 Response: 38617153
 Conc: 405.10 ng/ml



#31 AR-1260-1

R.T.: 6.145 min
 Delta R.T.: -0.007 min
 Response: 32689372
 Conc: 421.56 ng/ml



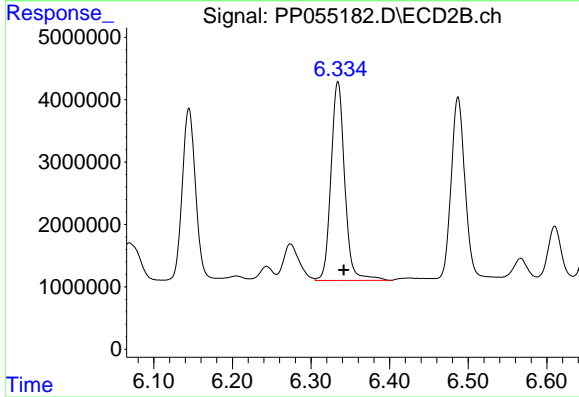
#32 AR-1260-2

R.T.: 7.368 min
 Delta R.T.: -0.005 min
 Response: 44523931
 Conc: 395.61 ng/ml

Instrument :
 ECD_P
 ClientSampleId :
 NB-07-013023MSD

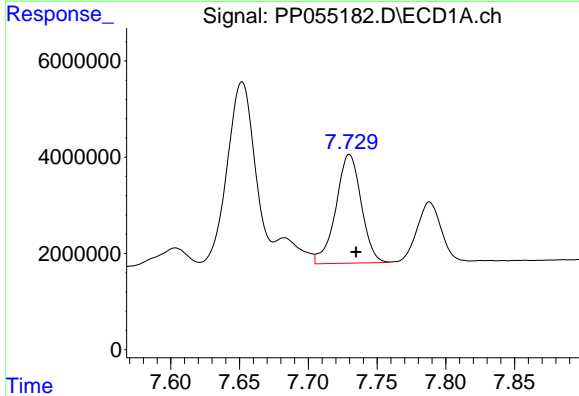
Manual Integrations
 APPROVED

Reviewed By :Yogesh Patel 02/01/2023
 Supervised By :Ankita Jodhani 02/01/2023



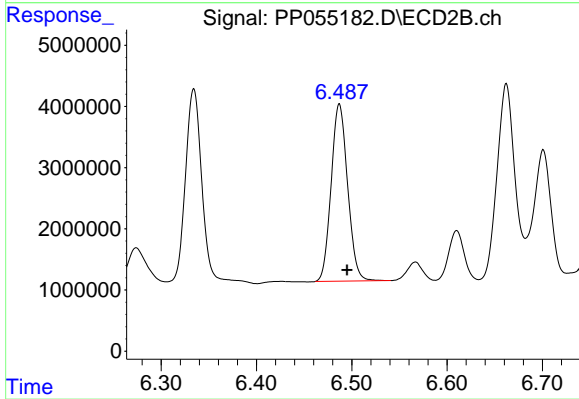
#32 AR-1260-2

R.T.: 6.334 min
 Delta R.T.: -0.007 min
 Response: 38611231
 Conc: 429.50 ng/ml



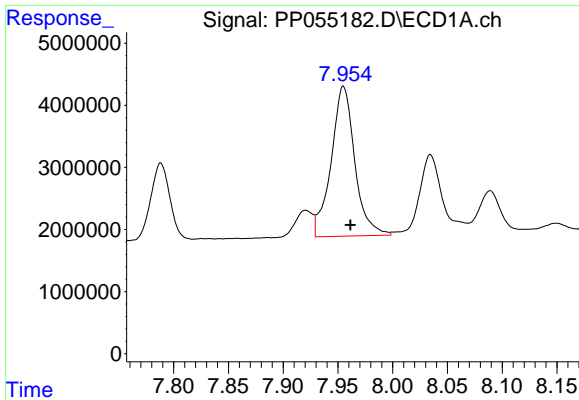
#33 AR-1260-3

R.T.: 7.730 min
 Delta R.T.: -0.005 min
 Response: 29026053
 Conc: 360.49 ng/ml



#33 AR-1260-3

R.T.: 6.487 min
 Delta R.T.: -0.008 min
 Response: 34800644
 Conc: 409.85 ng/ml

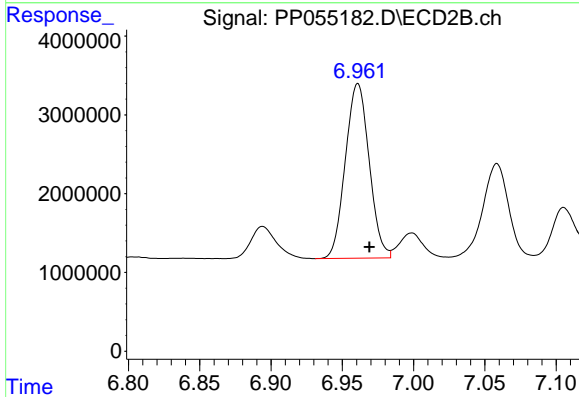


#34 AR-1260-4

R.T.: 7.955 min
 Delta R.T.: -0.006 min
 Response: 36325098
 Conc: 374.19 ng/ml

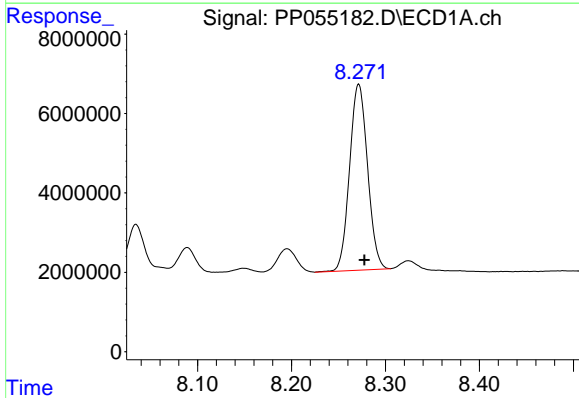
Instrument : ECD_P
 ClientSampleId : NB-07-013023MSD

Manual Integrations
APPROVED
 Reviewed By :Yogesh Patel 02/01/2023
 Supervised By :Ankita Jodhani 02/01/2023



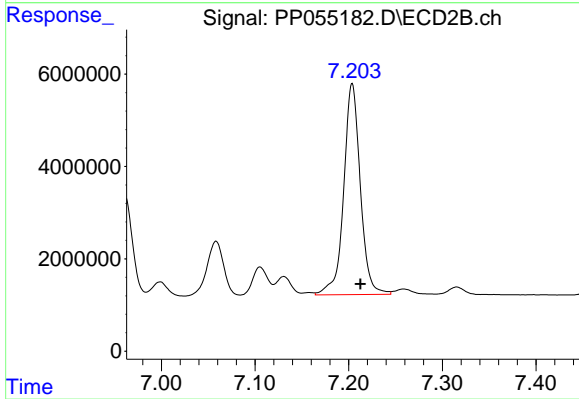
#34 AR-1260-4

R.T.: 6.961 min
 Delta R.T.: -0.008 min
 Response: 25806274
 Conc: 360.41 ng/ml



#35 AR-1260-5

R.T.: 8.272 min
 Delta R.T.: -0.006 min
 Response: 62230948
 Conc: 349.91 ng/ml



#35 AR-1260-5

R.T.: 7.204 min
 Delta R.T.: -0.009 min
 Response: 56464714
 Conc: 367.28 ng/ml