

Data Path : Z:\pestpcbsrv\HPCHEM1\ECD\_P\Data\PP020122\  
 Data File : PP043407.D  
 Signal(s) : Signal #1: ECD1A.CH Signal #2: ECD2B.CH  
 Acq On : 01 Feb 2022 15:53  
 Operator : AJ\MA  
 Sample : N1338-01MSD  
 Misc :  
 ALS Vial : 16 Sample Multiplier: 1

Instrument :  
 ECD\_P  
 ClientSampleId :  
 HP-1MSD

Integration File signal 1: autoint1.e  
 Integration File signal 2: autoint2.e  
 Quant Time: Feb 02 00:14:48 2022  
 Quant Method : Z:\pestpcbsrv\HPCHEM1\ECD\_P\methods\PP012422.M  
 Quant Title : GC EXTRACTABLES  
 QLast Update : Tue Jan 25 03:09:04 2022  
 Response via : Initial Calibration  
 Integrator: ChemStation 6890 Scale Mode: Small noise peaks clipped

Volume Inj. : 2 µl  
 Signal #1 Phase : ZB-MR1 Signal #2 Phase: ZB-MR2  
 Signal #1 Info : 30Mx0.32mmx 0.50µ Signal #2 Info : 30M x 0.32mm x 0.25µm

Compound	RT#1	RT#2	Resp#1	Resp#2	ng/ml	ng/ml
-----						
System Monitoring Compounds						
1) SA Tetrachlo...	4.863	4.030	532254	505970	23.156	22.707
2) SA Decachlor...	10.776	9.352	401524	464086	28.349	24.893
Target Compounds						
3) L1 AR-1016-1	6.165	5.292	315951	436890	480.467	481.782
4) L1 AR-1016-2	6.187	5.313	488658	742309	478.386	575.506
5) L1 AR-1016-3	6.255	5.506	294654	344298	462.927	482.820
6) L1 AR-1016-4	6.357	5.557	255923	256494	520.641m	464.780
7) L1 AR-1016-5	6.672	5.787	252281	345104	502.464m	515.605
31) L7 AR-1260-1	7.845	6.886	451414	620207	584.808	530.165
32) L7 AR-1260-2	8.108	7.082	575107	728884	675.507	554.143
33) L7 AR-1260-3	8.475	7.240	331374	692338	502.461	556.180
34) L7 AR-1260-4	8.702	7.724	415604	492336	543.569	501.915
35) L7 AR-1260-5	9.017	7.972	729044	1057797	552.100	478.021

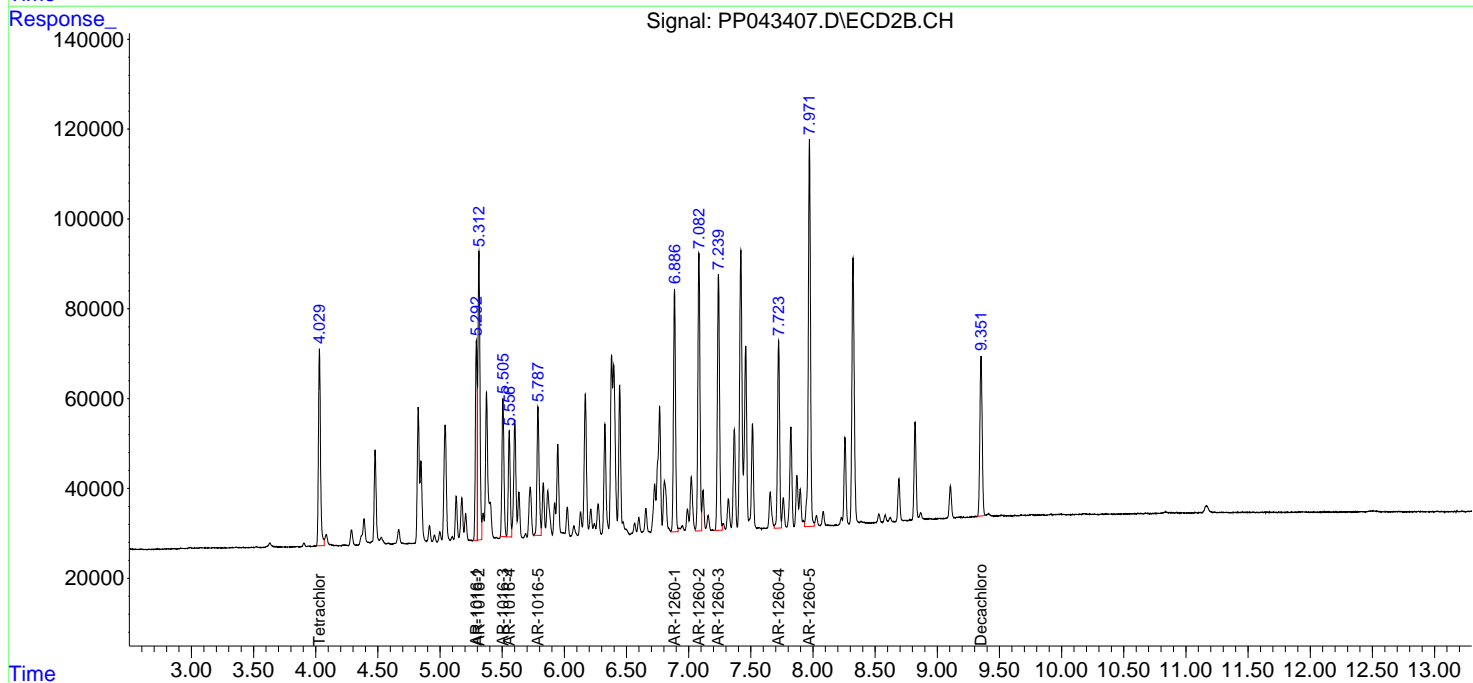
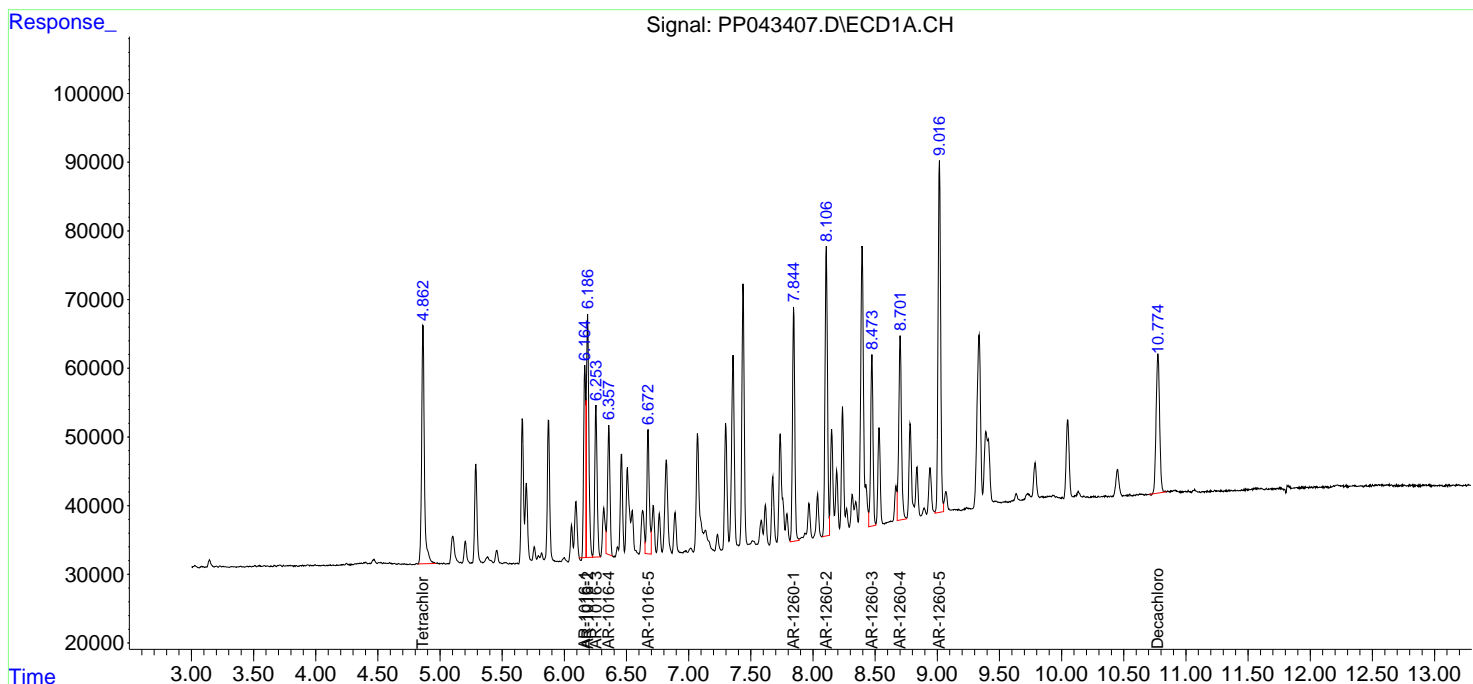
(f)=RT Delta > 1/2 Window (#)=Amounts differ by > 25% (m)=manual int.

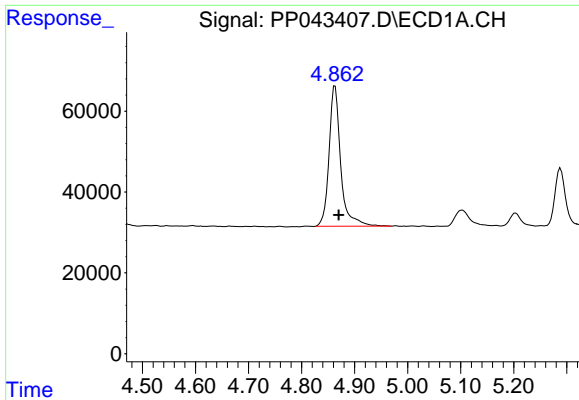
Data Path : Z:\pestpcbsrv\HPCHEM1\ECD\_P\Data\PP020122\  
 Data File : PP043407.D  
 Signal(s) : Signal #1: ECD1A.CH Signal #2: ECD2B.CH  
 Acq On : 01 Feb 2022 15:53  
 Operator : AJ\MA  
 Sample : N1338-01MSD  
 Misc :  
 ALS Vial : 16 Sample Multiplier: 1

Instrument :  
 ECD\_P  
 ClientSampleId :  
 HP-1MSD

Integration File signal 1: autoint1.e  
 Integration File signal 2: autoint2.e  
 Quant Time: Feb 02 00:14:48 2022  
 Quant Method : Z:\pestpcbsrv\HPCHEM1\ECD\_P\methods\PP012422.M  
 Quant Title : GC EXTRACTABLES  
 QLast Update : Tue Jan 25 03:09:04 2022  
 Response via : Initial Calibration  
 Integrator: ChemStation 6890 Scale Mode: Small noise peaks clipped

Volume Inj. : 2 µl  
 Signal #1 Phase : ZB-MR1 Signal #2 Phase: ZB-MR2  
 Signal #1 Info : 30Mx0.32mmx 0.50µ Signal #2 Info : 30M x 0.32mm x 0.25µm

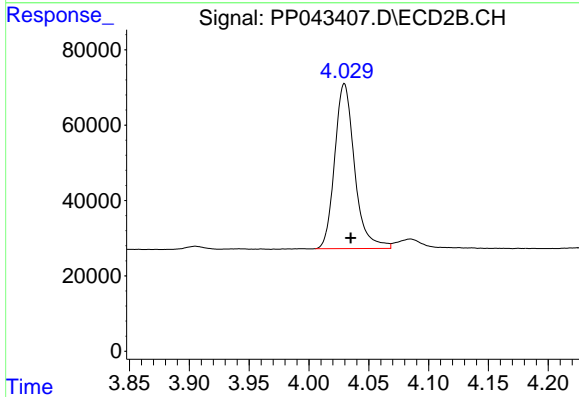




#1 Tetrachloro-m-xylene

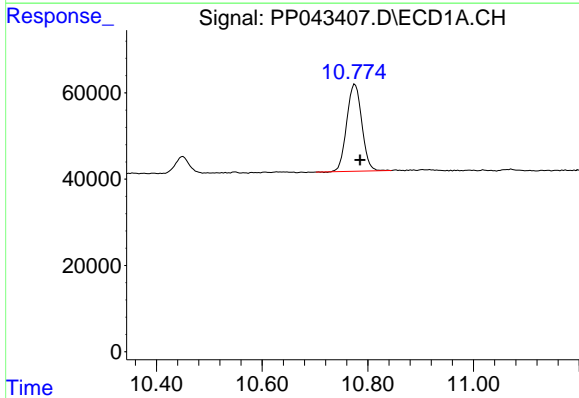
R.T.: 4.863 min  
 Delta R.T.: -0.007 min  
 Response: 532254  
 Conc: 23.16 ng/ml

Instrument :  
 ECD\_P  
 ClientSampleId :  
 HP-1MSD



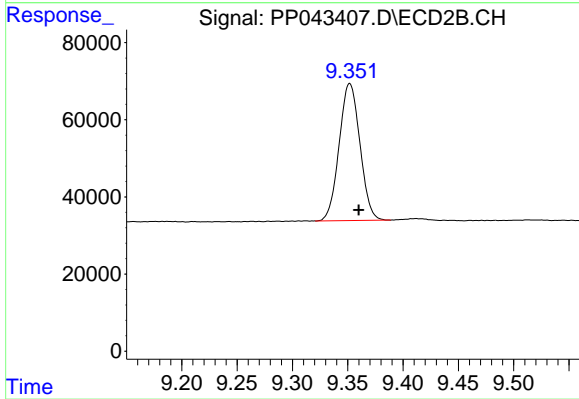
#1 Tetrachloro-m-xylene

R.T.: 4.030 min  
 Delta R.T.: -0.005 min  
 Response: 505970  
 Conc: 22.71 ng/ml



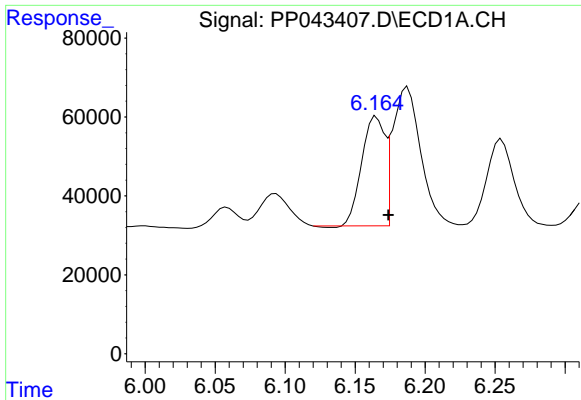
#2 Decachlorobiphenyl

R.T.: 10.776 min  
 Delta R.T.: -0.009 min  
 Response: 401524  
 Conc: 28.35 ng/ml



#2 Decachlorobiphenyl

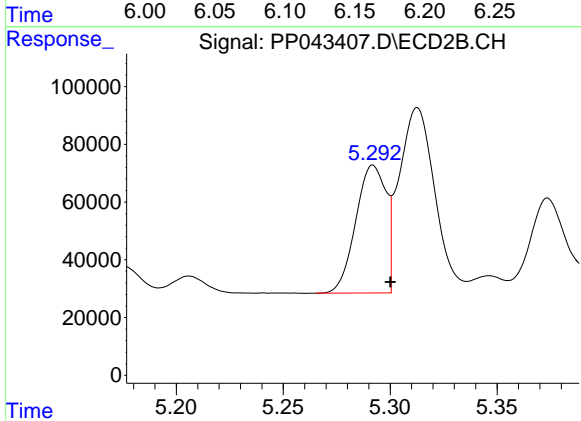
R.T.: 9.352 min  
 Delta R.T.: -0.008 min  
 Response: 464086  
 Conc: 24.89 ng/ml



#3 AR-1016-1

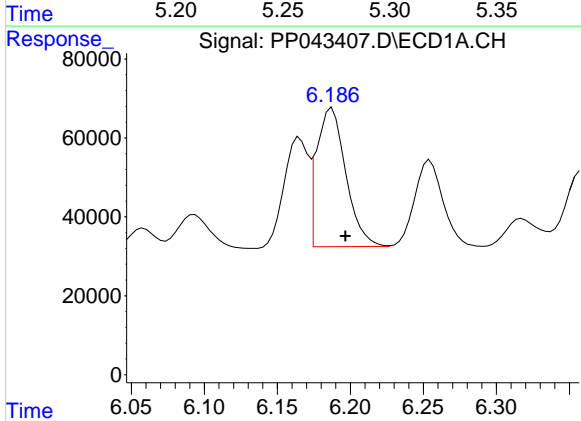
R.T.: 6.165 min  
 Delta R.T.: -0.009 min  
 Response: 315951  
 Conc: 480.47 ng/ml

Instrument :  
 ECD\_P  
 ClientSampleId :  
 HP-1MSD



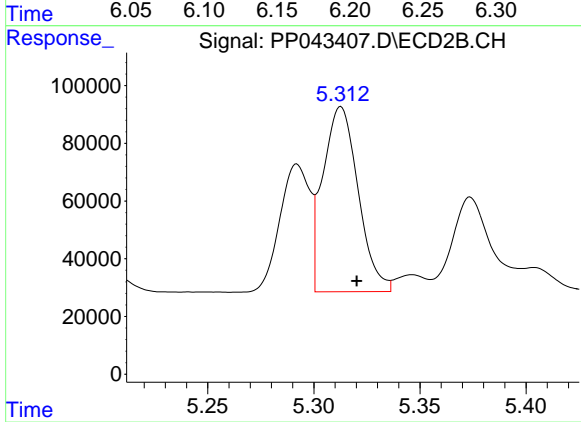
#3 AR-1016-1

R.T.: 5.292 min  
 Delta R.T.: -0.008 min  
 Response: 436890  
 Conc: 481.78 ng/ml



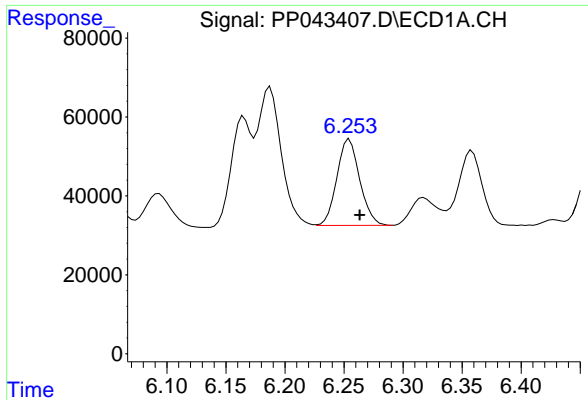
#4 AR-1016-2

R.T.: 6.187 min  
 Delta R.T.: -0.009 min  
 Response: 488658  
 Conc: 478.39 ng/ml



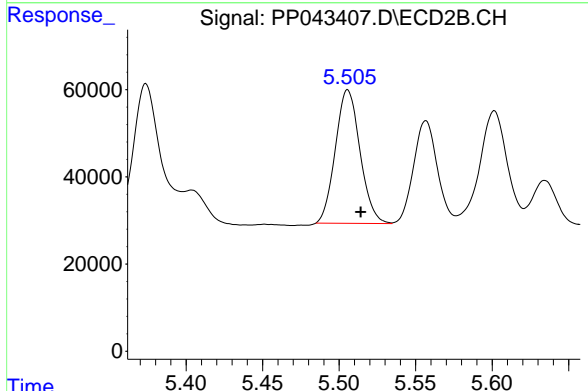
#4 AR-1016-2

R.T.: 5.313 min  
 Delta R.T.: -0.007 min  
 Response: 742309  
 Conc: 575.51 ng/ml

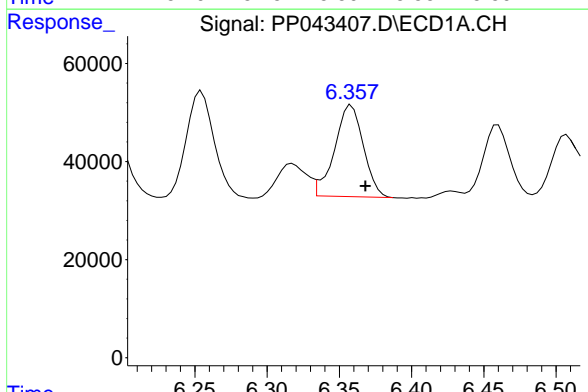


#5 AR-1016-3  
 R.T.: 6.255 min  
 Delta R.T.: -0.009 min  
 Response: 294654  
 Conc: 462.93 ng/ml

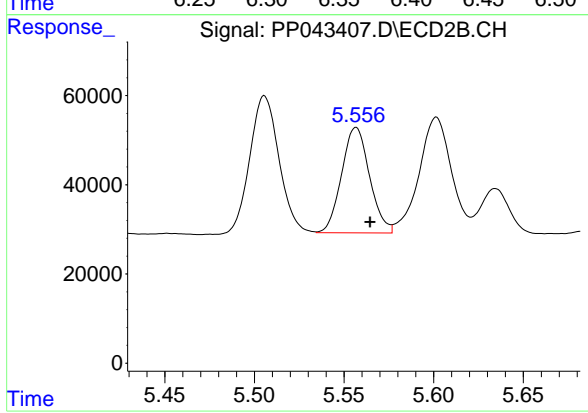
Instrument :  
 ECD\_P  
 ClientSampleId :  
 HP-1MSD



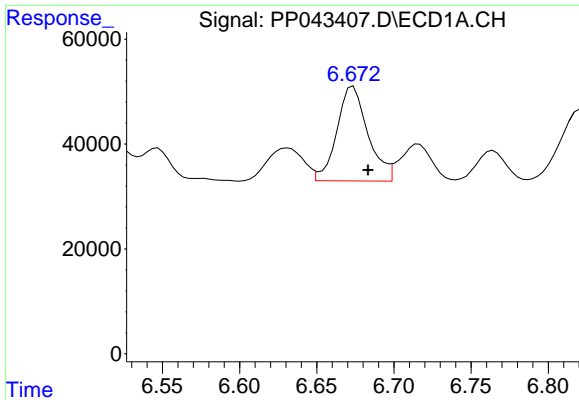
#5 AR-1016-3  
 R.T.: 5.506 min  
 Delta R.T.: -0.008 min  
 Response: 344298  
 Conc: 482.82 ng/ml



#6 AR-1016-4  
 R.T.: 6.357 min  
 Delta R.T.: -0.011 min  
 Response: 255923  
 Conc: 520.64 ng/ml m



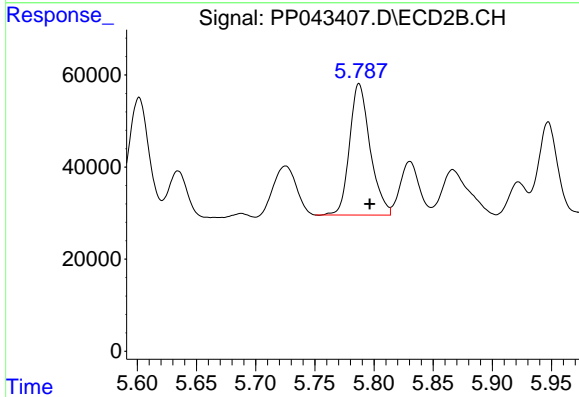
#6 AR-1016-4  
 R.T.: 5.557 min  
 Delta R.T.: -0.008 min  
 Response: 256494  
 Conc: 464.78 ng/ml



#7 AR-1016-5

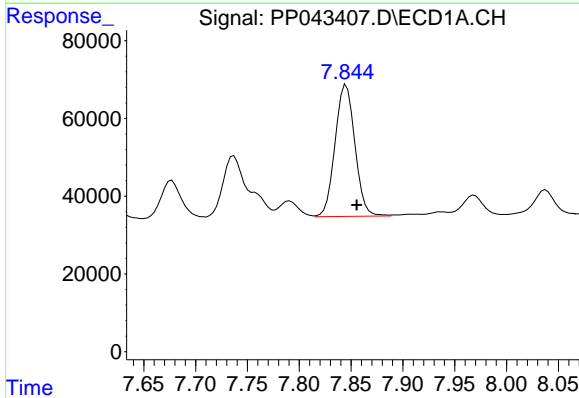
R.T.: 6.672 min  
 Delta R.T.: -0.011 min  
 Response: 252281  
 Conc: 502.46 ng/ml

Instrument :  
 ECD\_P  
 ClientSampleId :  
 HP-1MSD



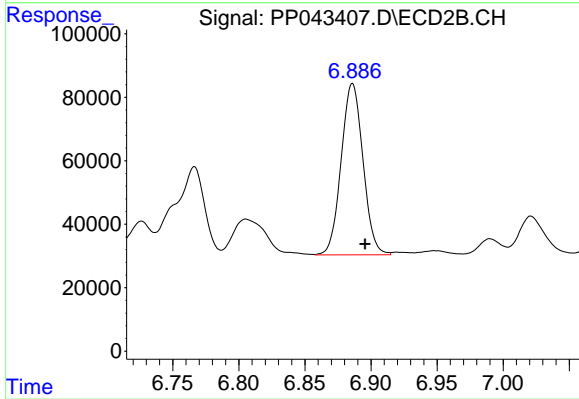
#7 AR-1016-5

R.T.: 5.787 min  
 Delta R.T.: -0.009 min  
 Response: 345104  
 Conc: 515.61 ng/ml



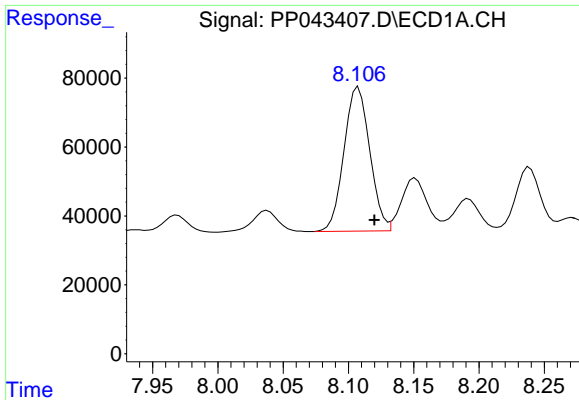
#31 AR-1260-1

R.T.: 7.845 min  
 Delta R.T.: -0.010 min  
 Response: 451414  
 Conc: 584.81 ng/ml



#31 AR-1260-1

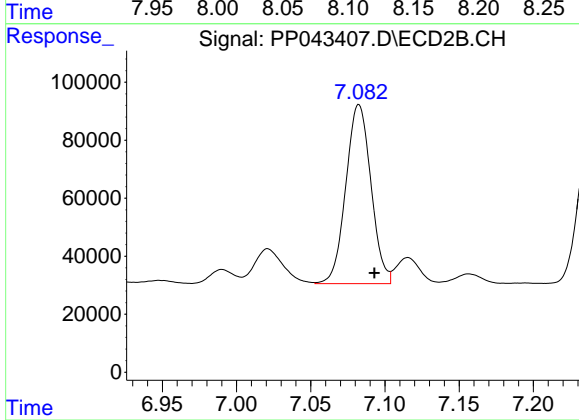
R.T.: 6.886 min  
 Delta R.T.: -0.010 min  
 Response: 620207  
 Conc: 530.17 ng/ml



#32 AR-1260-2

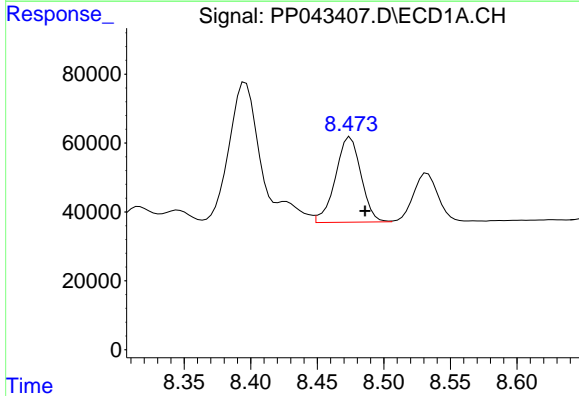
R.T.: 8.108 min  
 Delta R.T.: -0.012 min  
 Response: 575107  
 Conc: 675.51 ng/ml

Instrument :  
 ECD\_P  
 ClientSampleId :  
 HP-1MSD



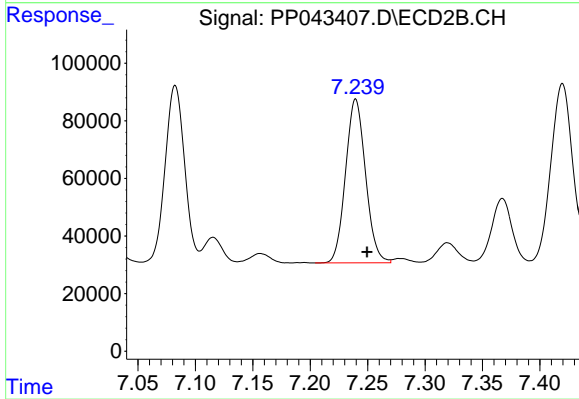
#32 AR-1260-2

R.T.: 7.082 min  
 Delta R.T.: -0.011 min  
 Response: 728884  
 Conc: 554.14 ng/ml



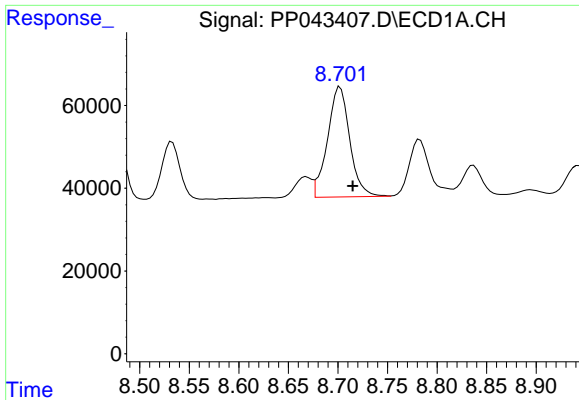
#33 AR-1260-3

R.T.: 8.475 min  
 Delta R.T.: -0.011 min  
 Response: 331374  
 Conc: 502.46 ng/ml



#33 AR-1260-3

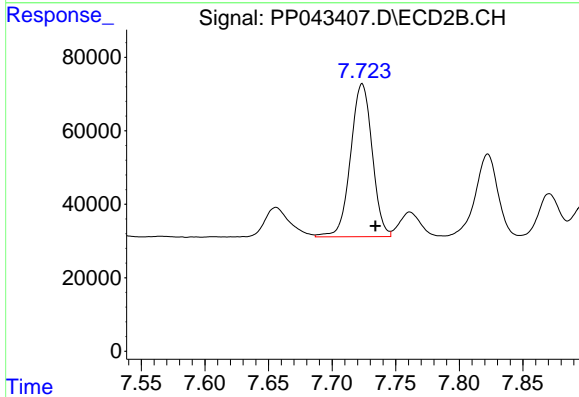
R.T.: 7.240 min  
 Delta R.T.: -0.010 min  
 Response: 692338  
 Conc: 556.18 ng/ml



#34 AR-1260-4

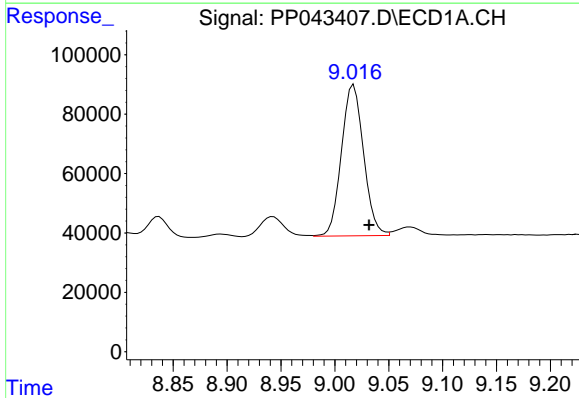
R.T.: 8.702 min  
 Delta R.T.: -0.013 min  
 Response: 415604  
 Conc: 543.57 ng/ml

Instrument :  
 ECD\_P  
 ClientSampleId :  
 HP-1MSD



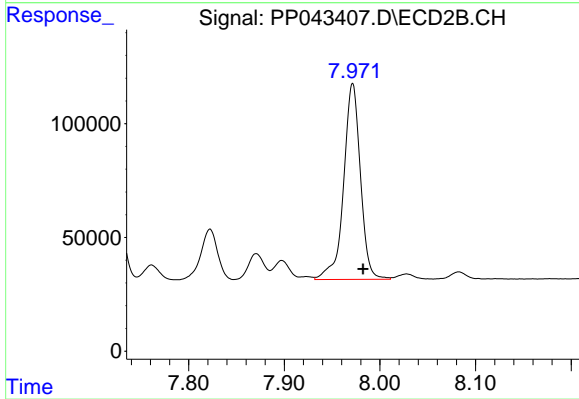
#34 AR-1260-4

R.T.: 7.724 min  
 Delta R.T.: -0.010 min  
 Response: 492336  
 Conc: 501.91 ng/ml



#35 AR-1260-5

R.T.: 9.017 min  
 Delta R.T.: -0.014 min  
 Response: 729044  
 Conc: 552.10 ng/ml



#35 AR-1260-5

R.T.: 7.972 min  
 Delta R.T.: -0.011 min  
 Response: 1057797  
 Conc: 478.02 ng/ml