

Data Path : Z:\pestpcbsrv\HPCHEM1\ECD_P\Data\PP020122\
 Data File : PP043417.D
 Signal(s) : Signal #1: ECD1A.CH Signal #2: ECD2B.CH
 Acq On : 01 Feb 2022 19:34
 Operator : AJ\MA
 Sample : I.BLK
 Misc :
 ALS Vial : 2 Sample Multiplier: 1

Instrument :
 ECD_P
 ClientSampleId :
 I.BLK

Integration File signal 1: autoint1.e
 Integration File signal 2: autoint2.e
 Quant Time: Feb 02 00:19:34 2022
 Quant Method : Z:\pestpcbsrv\HPCHEM1\ECD_P\methods\PP012422.M
 Quant Title : GC EXTRACTABLES
 QLast Update : Tue Jan 25 03:09:04 2022
 Response via : Initial Calibration
 Integrator: ChemStation 6890 Scale Mode: Small noise peaks clipped

Volume Inj. : 2 µl
 Signal #1 Phase : ZB-MR1 Signal #2 Phase: ZB-MR2
 Signal #1 Info : 30Mx0.32mmx 0.50µ Signal #2 Info : 30M x 0.32mm x 0.25µm

Compound	RT#1	RT#2	Resp#1	Resp#2	ng/ml	ng/ml

System Monitoring Compounds						
1) SA Tetrachlo...	4.862	4.029	494031	510203	21.493	22.897
2) SA Decachlor...	10.775	9.351	396751	480421	28.012	25.770

Target Compounds

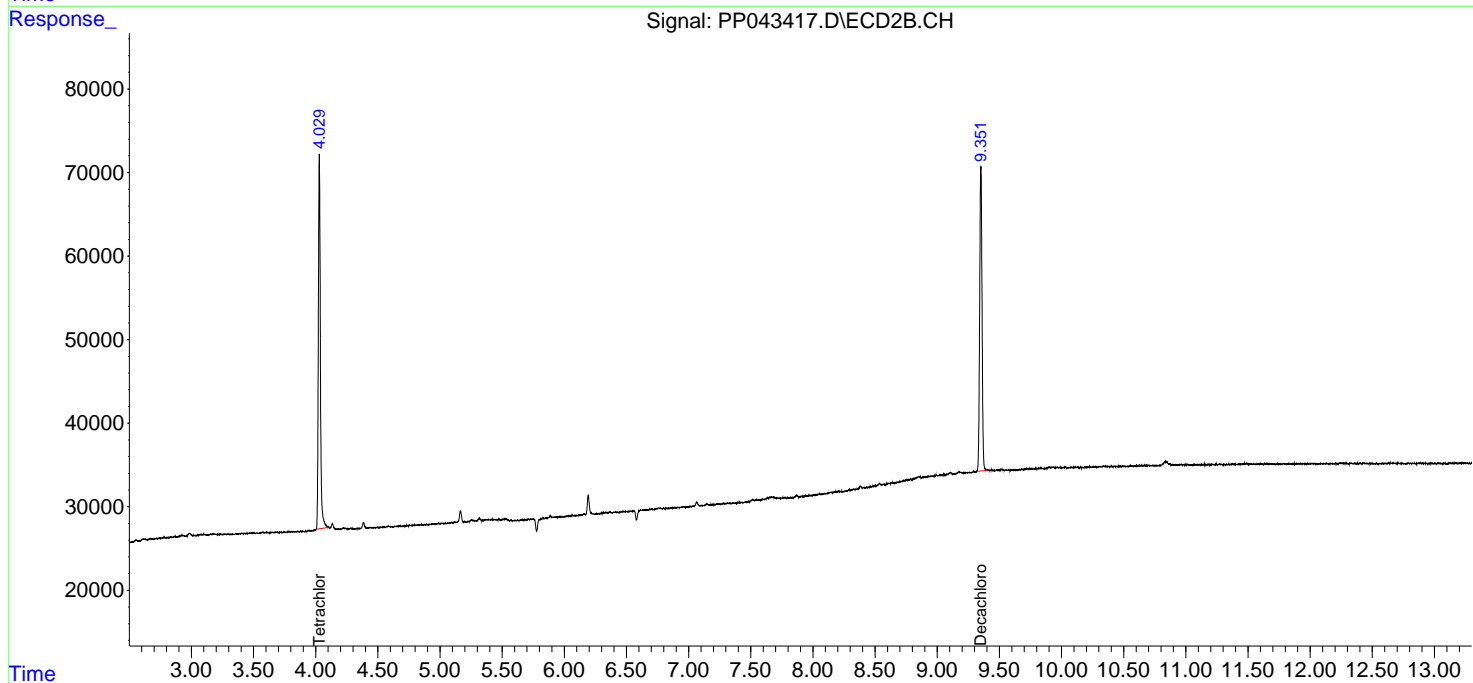
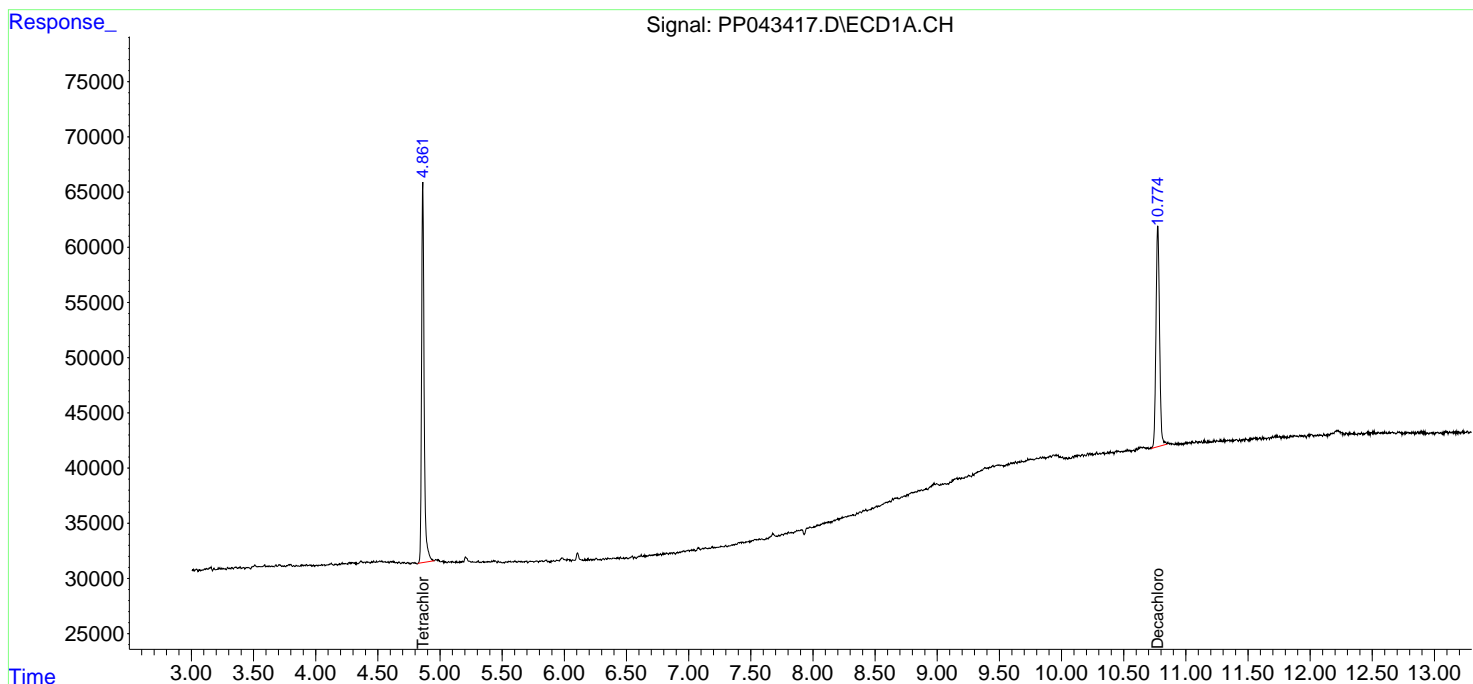
(f)=RT Delta > 1/2 Window (#)=Amounts differ by > 25% (m)=manual int.

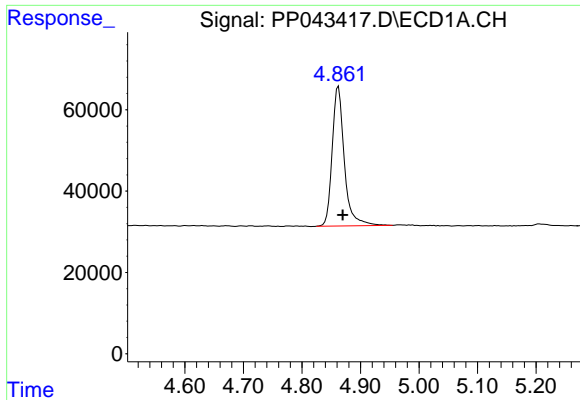
Data Path : Z:\pestpcbsrv\HPCHEM1\ECD_P\Data\PP020122\
 Data File : PP043417.D
 Signal(s) : Signal #1: ECD1A.CH Signal #2: ECD2B.CH
 Acq On : 01 Feb 2022 19:34
 Operator : AJ\MA
 Sample : I.BLK
 Misc :
 ALS Vial : 2 Sample Multiplier: 1

Instrument :
 ECD_P
 ClientSampleId :
 I.BLK

Integration File signal 1: autoint1.e
 Integration File signal 2: autoint2.e
 Quant Time: Feb 02 00:19:34 2022
 Quant Method : Z:\pestpcbsrv\HPCHEM1\ECD_P\methods\PP012422.M
 Quant Title : GC EXTRACTABLES
 QLast Update : Tue Jan 25 03:09:04 2022
 Response via : Initial Calibration
 Integrator: ChemStation 6890 Scale Mode: Small noise peaks clipped

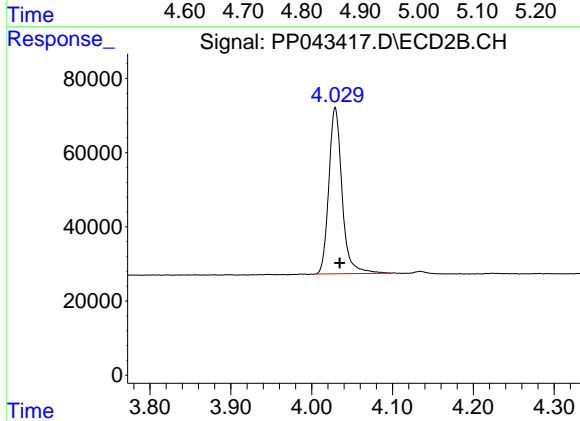
Volume Inj. : 2 µl
 Signal #1 Phase : ZB-MR1 Signal #2 Phase: ZB-MR2
 Signal #1 Info : 30Mx0.32mmx 0.50µ Signal #2 Info : 30M x 0.32mm x 0.25µm



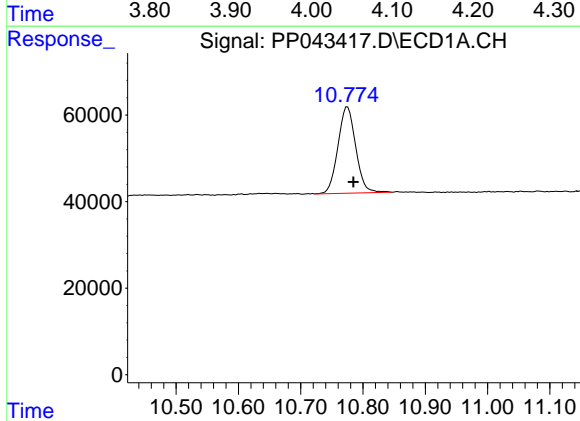


#1 Tetrachloro-m-xylene
 R.T.: 4.862 min
 Delta R.T.: -0.008 min
 Response: 494031
 Conc: 21.49 ng/ml

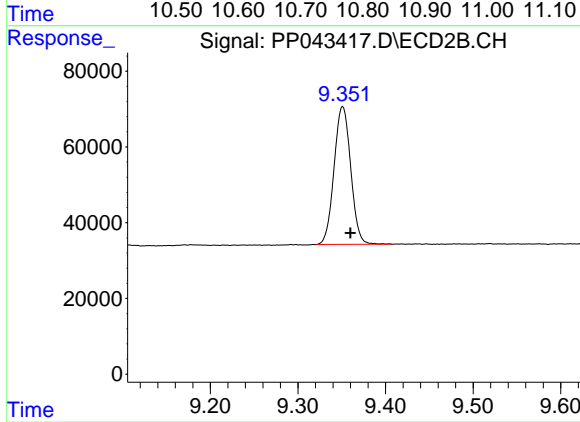
Instrument :
 ECD_P
 ClientSampleId :
 I.BLK



#1 Tetrachloro-m-xylene
 R.T.: 4.029 min
 Delta R.T.: -0.006 min
 Response: 510203
 Conc: 22.90 ng/ml



#2 Decachlorobiphenyl
 R.T.: 10.775 min
 Delta R.T.: -0.010 min
 Response: 396751
 Conc: 28.01 ng/ml



#2 Decachlorobiphenyl
 R.T.: 9.351 min
 Delta R.T.: -0.009 min
 Response: 480421
 Conc: 25.77 ng/ml