

Data Path : Z:\pestpcbsrv\HPCHEM1\ECD\_P\Data\PP020124\  
 Data File : PP063196.D  
 Signal(s) : Signal #1: ECD1A.ch Signal #2: ECD2B.ch  
 Acq On : 01 Feb 2024 21:23  
 Operator : YP\AJ  
 Sample : P1187-01  
 Misc : AR1242 LOD 40 PPB  
 ALS Vial : 37 Sample Multiplier: 1

Instrument :  
 ECD\_P  
 ClientSampleId :  
 LOD-MDL-SOIL-01-QT1-2024

Integration File signal 1: autoint1.e  
 Integration File signal 2: autoint2.e  
 Quant Time: Feb 02 01:41:03 2024  
 Quant Method : Z:\pestpcbsrv\HPCHEM1\ECD\_P\methods\PP020124.M  
 Quant Title : GC EXTRACTABLES  
 QLast Update : Thu Feb 01 16:28:12 2024  
 Response via : Initial Calibration  
 Integrator: ChemStation

Volume Inj. : 2 µl  
 Signal #1 Phase : ZB-MR1 Signal #2 Phase: ZB-MR2  
 Signal #1 Info : 30Mx0.32mmx 0.50µ Signal #2 Info : 30M x 0.32mm x 0.25µm

Compound	RT#1	RT#2	Resp#1	Resp#2	ng/ml	ng/ml
-----						
System Monitoring Compounds						
1) SA Tetrachlo...	4.492	3.648	49755168	48647739	20.801	20.467
2) SA Decachlor...	10.364	8.705	50711401	54647158	22.550	22.061
Target Compounds						
3) L1 AR-1016-1	5.675	4.743	2641351	2541454	35.101	35.525
4) L1 AR-1016-2	5.698	4.762	3838863	3401436	35.345	33.116
5) L1 AR-1016-3	5.760	4.940	2422052	1898353	35.098	34.329
6) L1 AR-1016-4	5.860	4.982	1593021	1794359	28.445	36.259 #
7) L1 AR-1016-5	6.157	5.197	2180247	2287775	35.706	36.368
8) L2 AR-1221-1	4.700	0.000	395180	0	14.202	N.D. #
9) L2 AR-1221-2	4.801	3.950	1197059	912421	56.108	46.194
10) L2 AR-1221-3	4.867	4.028	1724970	1408087	28.002	23.127
11) L3 AR-1232-1	4.867	4.028	1724970	1408087	32.489	26.198
12) L3 AR-1232-2	5.404	4.762	2438070	3401436	80.592	70.981
13) L3 AR-1232-3	5.698	4.940	3838863	1898353	75.328	73.082
14) L3 AR-1232-4	5.860	5.025	1593021	2194317	60.630	84.179 #
15) L3 AR-1232-5	5.951	5.197	1716656	2287775	74.461	83.908
16) L4 AR-1242-1	5.675	4.743	2641351	2541454	46.389	46.768
17) L4 AR-1242-2	5.698	4.762	3838863	3401436	46.824	43.674
18) L4 AR-1242-3	5.760	4.940	2422052	1898353	46.153	44.797
19) L4 AR-1242-4	5.860	5.025	1593021	2194317	37.100	46.985 #
20) L4 AR-1242-5	6.604	5.551	2156087	2342065	48.346	45.255
21) L5 AR-1248-1	5.675	4.743	2641351	2541454	59.557	61.346
22) L5 AR-1248-2	5.951	4.982	1716656	1794359	23.894	27.121
23) L5 AR-1248-3	6.157	5.025	2180247	2194317	28.057	31.323
24) L5 AR-1248-4	6.565	5.197	2045348	2287775	27.446	28.630
25) L5 AR-1248-5	6.604	5.593	2156087	1755604	27.716	25.588
26) L6 AR-1254-1	6.537	5.551	1394330	2342065	15.594	19.313
27) L6 AR-1254-2	6.763	5.700	1918458	618656	14.616	5.702 #
28) L6 AR-1254-3	7.127	6.107	1244619	1476913	9.309	8.615
29) L6 AR-1254-4	7.416	6.337	1292747	486076	16.365	5.973 #
30) L6 AR-1254-5	0.000	6.759	0	283596	N.D.	1.996 #
31) L7 AR-1260-1	7.298	6.252	126621	1816983	1.040	13.708 #
32) L7 AR-1260-2	7.560	0.000	877545	0	6.900	N.D. #
33) L7 AR-1260-3	7.910	6.575	615960	742600	5.959	5.122
34) L7 AR-1260-4	8.156	0.000	167544	0	1.427	N.D. #
35) L7 AR-1260-5	8.479	0.000	78512	0	0.400	N.D. #
36) L8 AR-1262-1	7.996f	0.000	114904	0	1.815	N.D. #
37) L8 AR-1262-2	8.479	0.000	78512	0	0.341	N.D. #

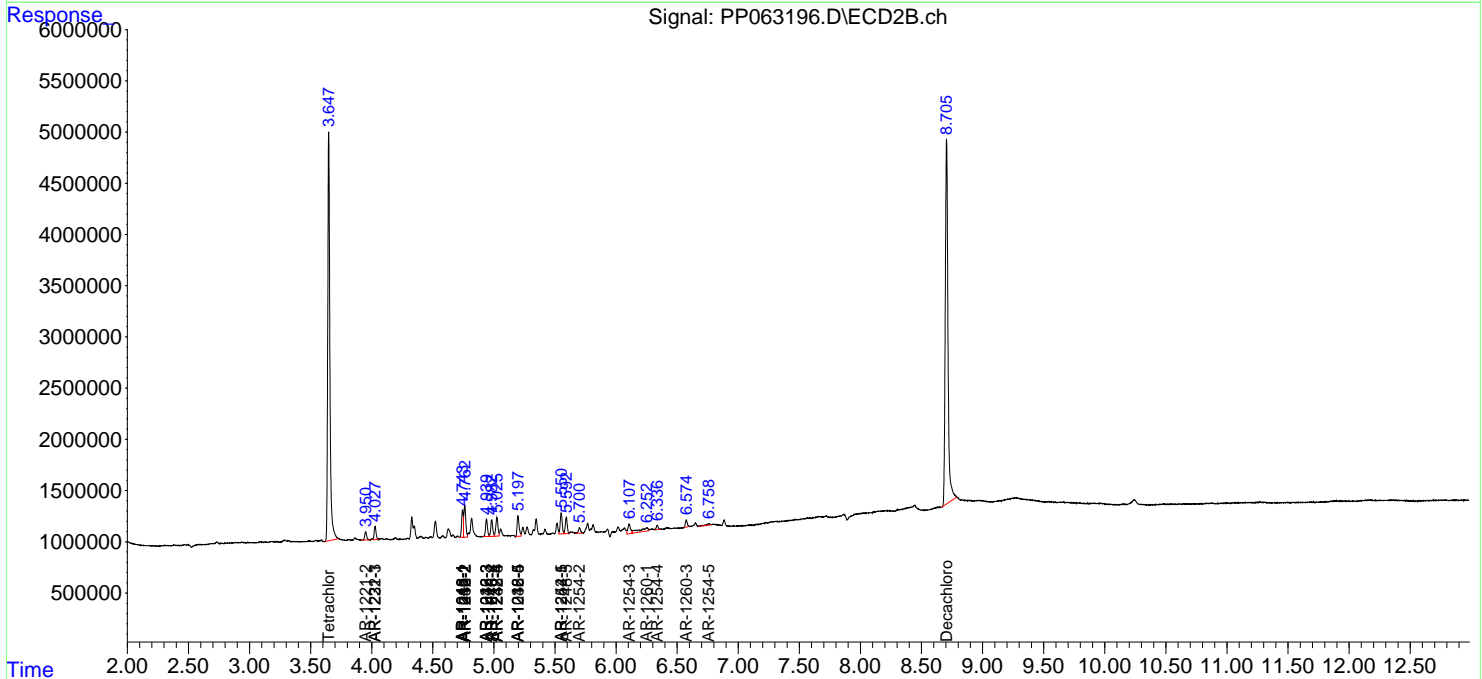
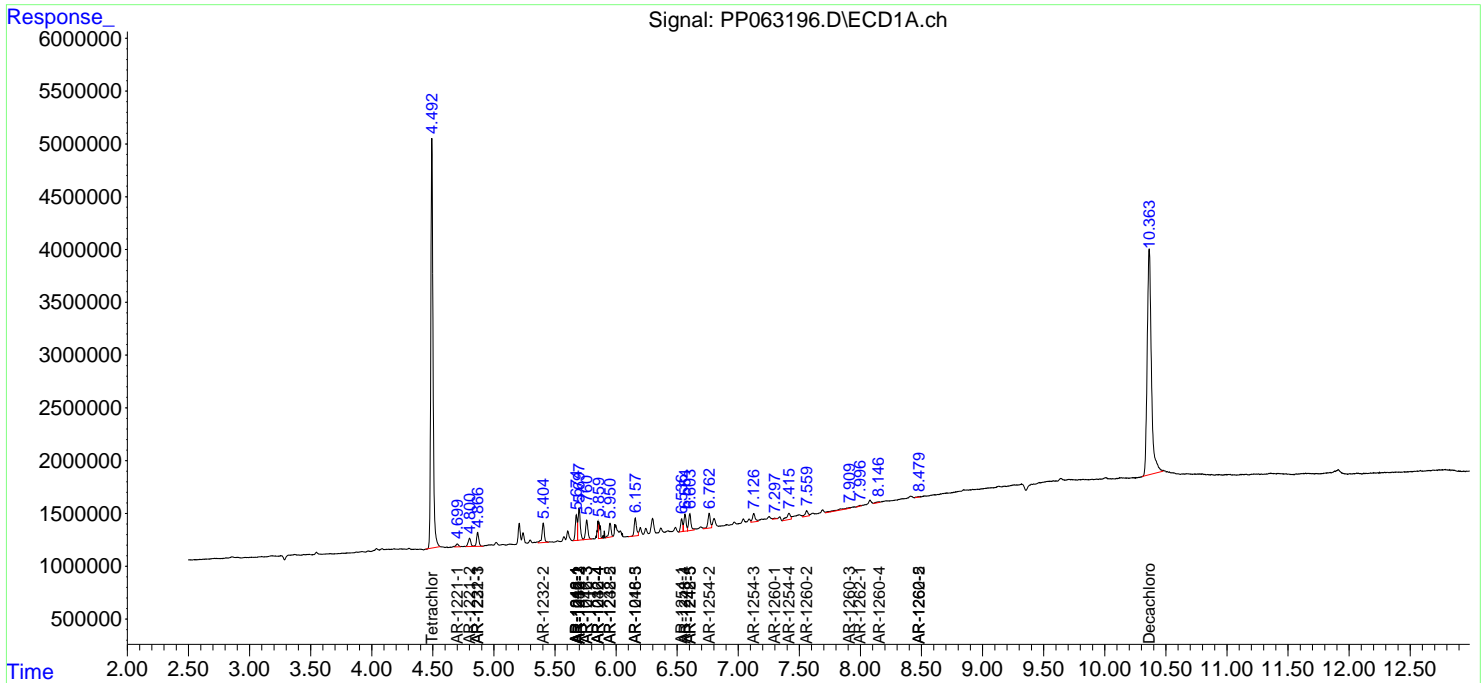
(f)=RT Delta > 1/2 Window (#)=Amounts differ by > 25% (m)=manual int.

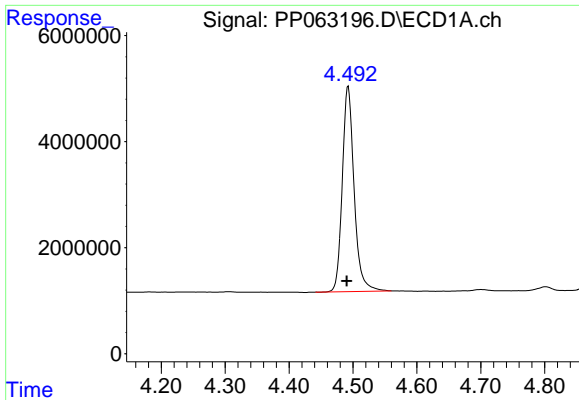
Data Path : Z:\pestpcbsrv\HPCHEM1\ECD\_P\Data\PP020124\  
 Data File : PP063196.D  
 Signal(s) : Signal #1: ECD1A.ch Signal #2: ECD2B.ch  
 Acq On : 01 Feb 2024 21:23  
 Operator : YP\AJ  
 Sample : P1187-01  
 Misc : AR1242 LOD 40 PPB  
 ALS Vial : 37 Sample Multiplier: 1

**Instrument :**  
 ECD\_P  
**ClientSampleId :**  
 LOD-MDL-SOIL-01-QT1-2024

Integration File signal 1: autoint1.e  
 Integration File signal 2: autoint2.e  
 Quant Time: Feb 02 01:41:03 2024  
 Quant Method : Z:\pestpcbsrv\HPCHEM1\ECD\_P\methods\PP020124.M  
 Quant Title : GC EXTRACTABLES  
 QLast Update : Thu Feb 01 16:28:12 2024  
 Response via : Initial Calibration  
 Integrator: ChemStation

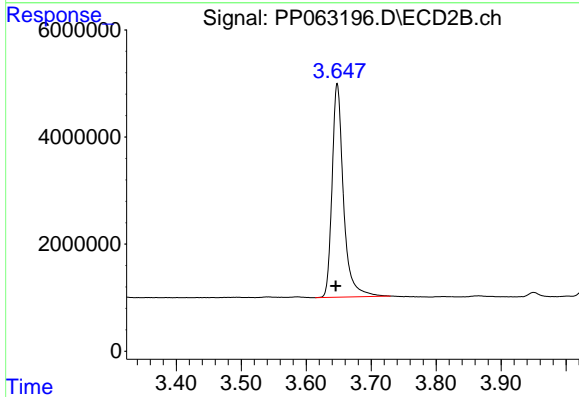
Volume Inj. : 2 µl  
 Signal #1 Phase : ZB-MR1 Signal #2 Phase: ZB-MR2  
 Signal #1 Info : 30Mx0.32mmx 0.50µ Signal #2 Info : 30M x 0.32mm x 0.25µm



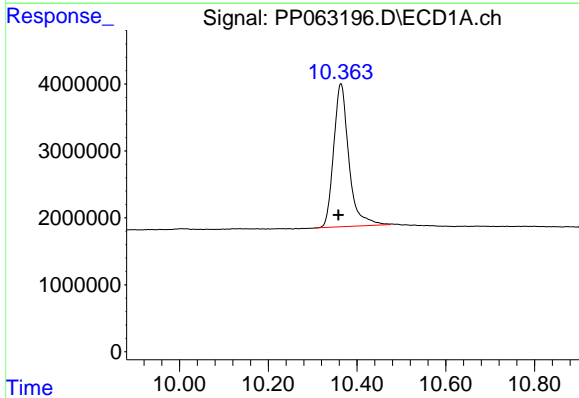


#1 Tetrachloro-m-xylene  
 R.T.: 4.492 min  
 Delta R.T.: 0.002 min  
 Response: 49755168  
 Conc: 20.80 ng/ml

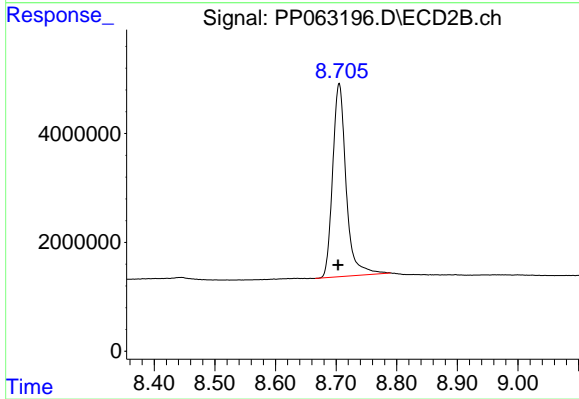
Instrument :  
 ECD\_P  
 ClientSampleId :  
 LOD-MDL-SOIL-01-QT1-2024



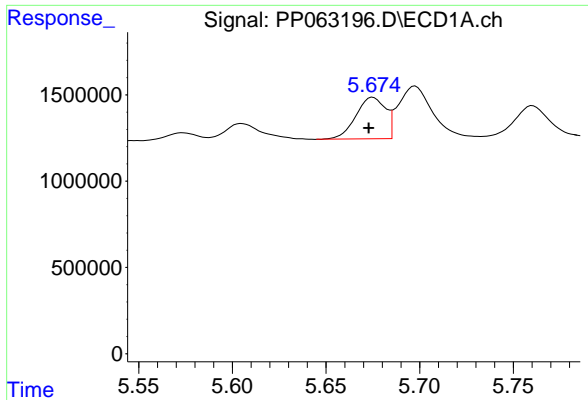
#1 Tetrachloro-m-xylene  
 R.T.: 3.648 min  
 Delta R.T.: 0.002 min  
 Response: 48647739  
 Conc: 20.47 ng/ml



#2 Decachlorobiphenyl  
 R.T.: 10.364 min  
 Delta R.T.: 0.006 min  
 Response: 50711401  
 Conc: 22.55 ng/ml



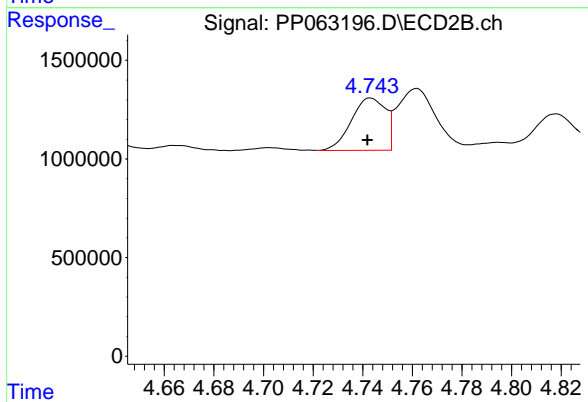
#2 Decachlorobiphenyl  
 R.T.: 8.705 min  
 Delta R.T.: 0.002 min  
 Response: 54647158  
 Conc: 22.06 ng/ml



#3 AR-1016-1

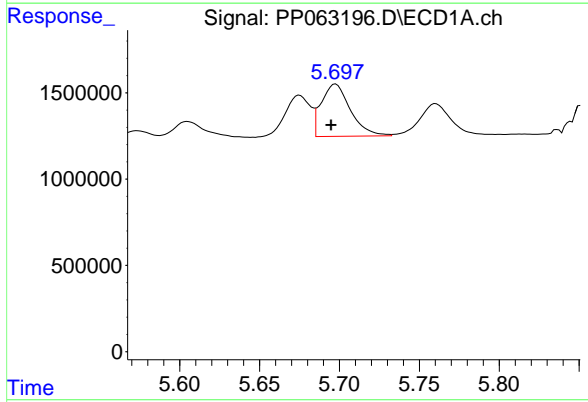
R.T.: 5.675 min  
 Delta R.T.: 0.002 min  
 Response: 2641351  
 Conc: 35.10 ng/ml

Instrument :  
 ECD\_P  
 ClientSampleId :  
 LOD-MDL-SOIL-01-QT1-2024



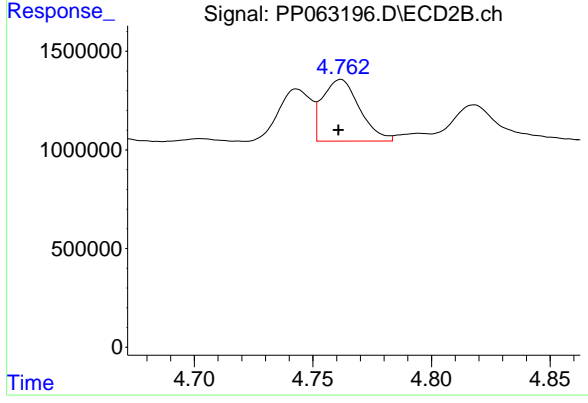
#3 AR-1016-1

R.T.: 4.743 min  
 Delta R.T.: 0.001 min  
 Response: 2541454  
 Conc: 35.52 ng/ml



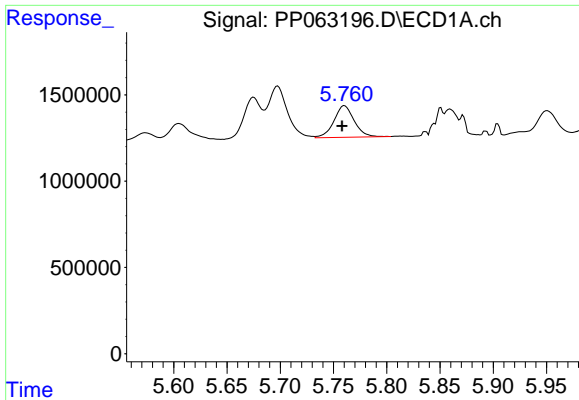
#4 AR-1016-2

R.T.: 5.698 min  
 Delta R.T.: 0.003 min  
 Response: 3838863  
 Conc: 35.34 ng/ml



#4 AR-1016-2

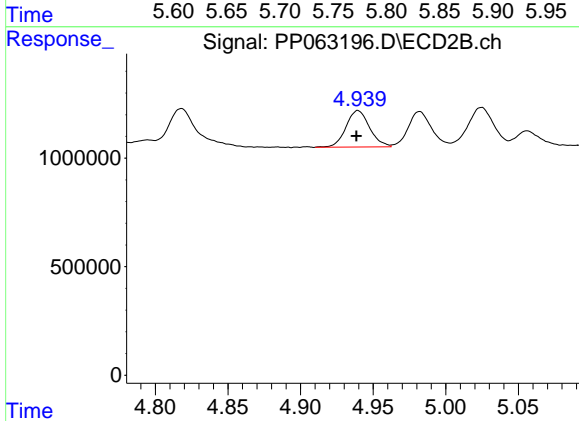
R.T.: 4.762 min  
 Delta R.T.: 0.001 min  
 Response: 3401436  
 Conc: 33.12 ng/ml



#5 AR-1016-3

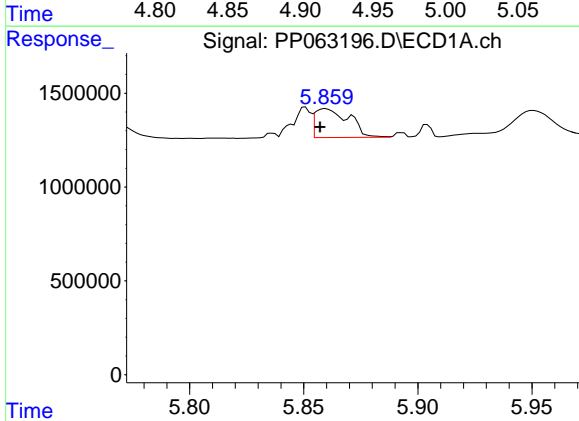
R.T.: 5.760 min  
 Delta R.T.: 0.002 min  
 Response: 2422052  
 Conc: 35.10 ng/ml

Instrument :  
 ECD\_P  
 ClientSampleId :  
 LOD-MDL-SOIL-01-QT1-2024



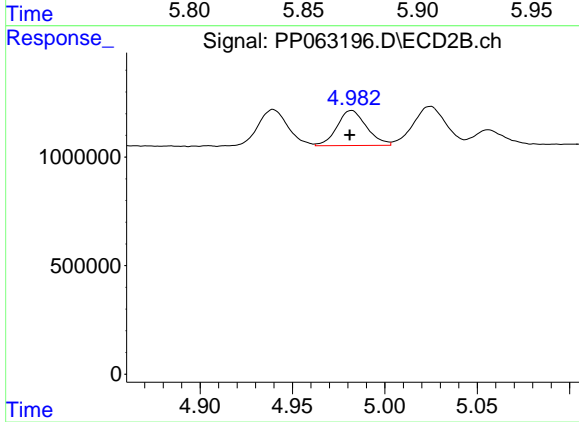
#5 AR-1016-3

R.T.: 4.940 min  
 Delta R.T.: 0.001 min  
 Response: 1898353  
 Conc: 34.33 ng/ml



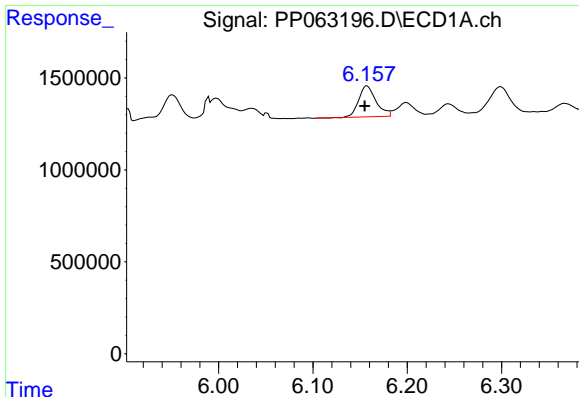
#6 AR-1016-4

R.T.: 5.860 min  
 Delta R.T.: 0.002 min  
 Response: 1593021  
 Conc: 28.45 ng/ml



#6 AR-1016-4

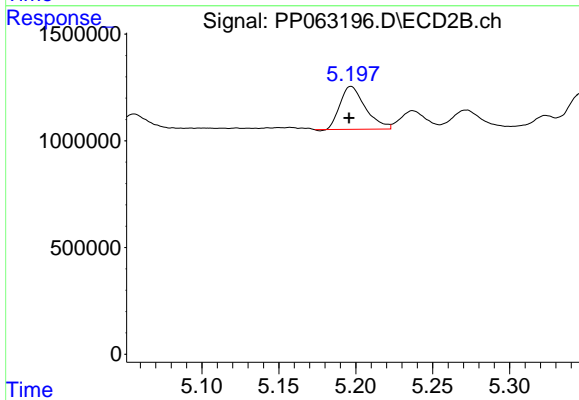
R.T.: 4.982 min  
 Delta R.T.: 0.000 min  
 Response: 1794359  
 Conc: 36.26 ng/ml



#7 AR-1016-5

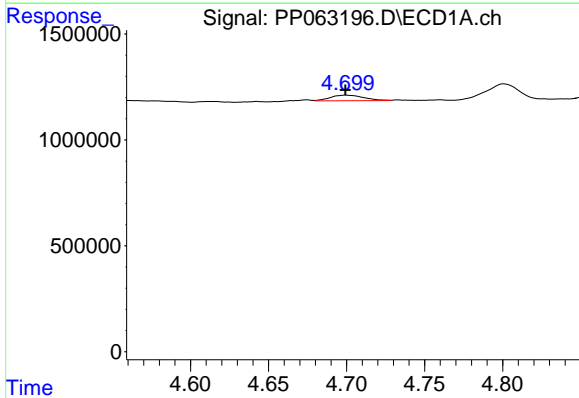
R.T.: 6.157 min  
 Delta R.T.: 0.002 min  
 Response: 2180247  
 Conc: 35.71 ng/ml

Instrument :  
 ECD\_P  
 ClientSampleId :  
 LOD-MDL-SOIL-01-QT1-2024



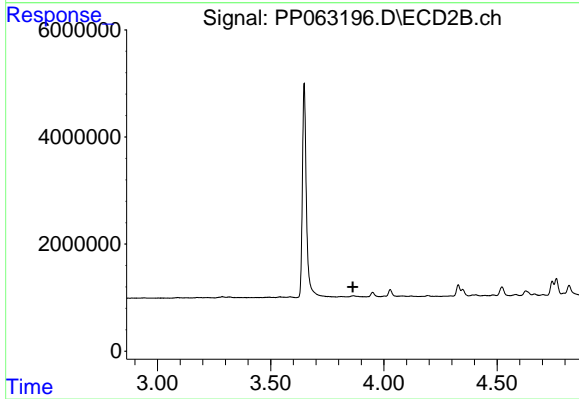
#7 AR-1016-5

R.T.: 5.197 min  
 Delta R.T.: 0.001 min  
 Response: 2287775  
 Conc: 36.37 ng/ml



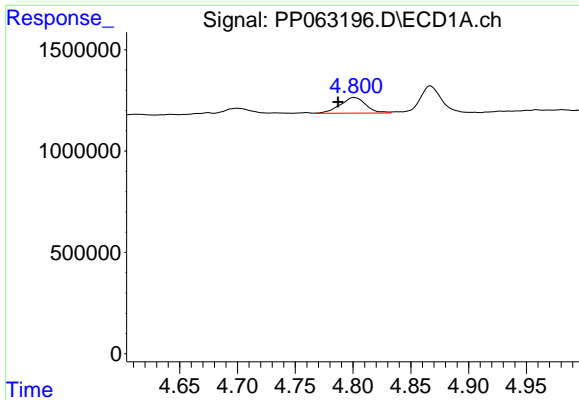
#8 AR-1221-1

R.T.: 4.700 min  
 Delta R.T.: 0.000 min  
 Response: 395180  
 Conc: 14.20 ng/ml



#8 AR-1221-1

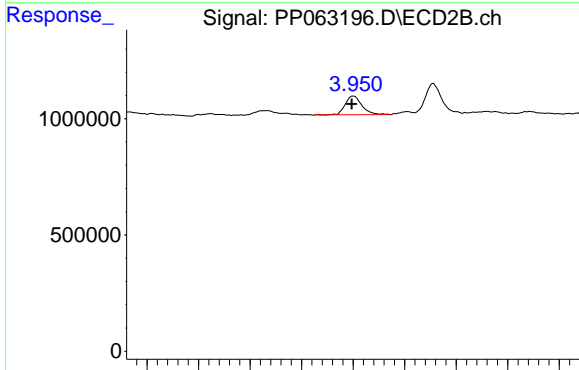
R.T.: 0.000 min  
 Exp R.T. : 3.863 min  
 Response: 0  
 Conc: N.D.



#9 AR-1221-2

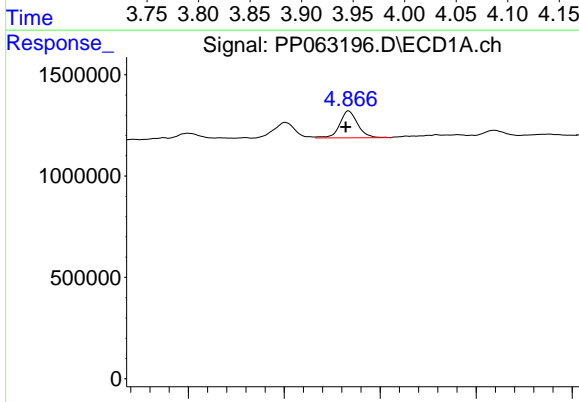
R.T.: 4.801 min  
 Delta R.T.: 0.014 min  
 Response: 1197059  
 Conc: 56.11 ng/ml

Instrument :  
 ECD\_P  
 ClientSampleId :  
 LOD-MDL-SOIL-01-QT1-2024



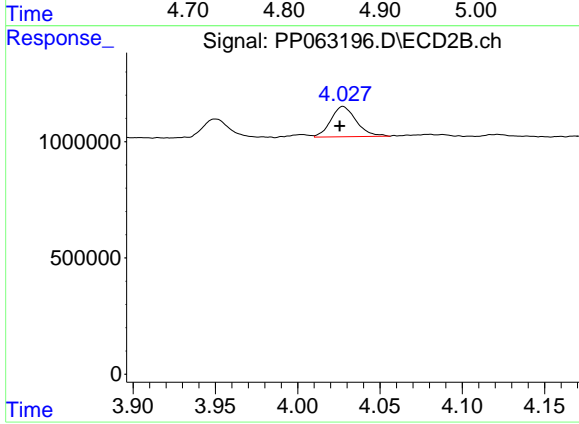
#9 AR-1221-2

R.T.: 3.950 min  
 Delta R.T.: 0.001 min  
 Response: 912421  
 Conc: 46.19 ng/ml



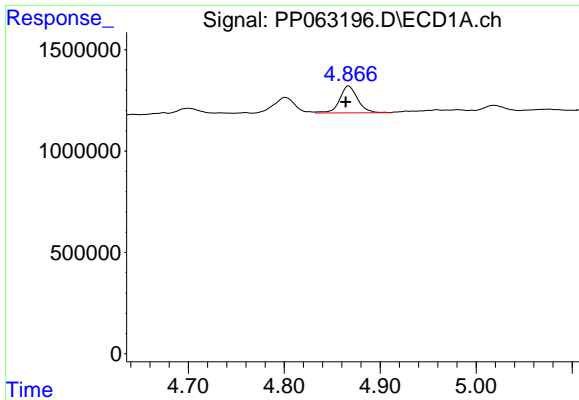
#10 AR-1221-3

R.T.: 4.867 min  
 Delta R.T.: 0.003 min  
 Response: 1724970  
 Conc: 28.00 ng/ml



#10 AR-1221-3

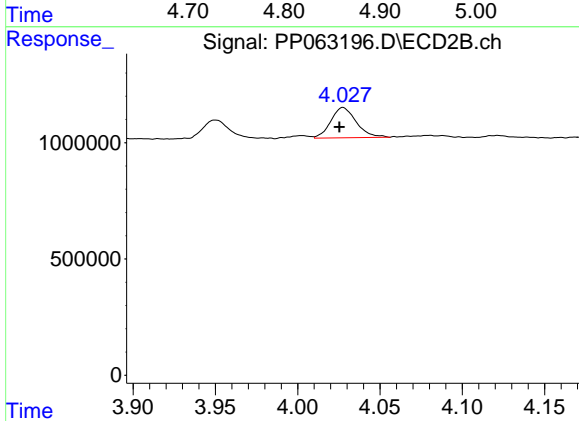
R.T.: 4.028 min  
 Delta R.T.: 0.002 min  
 Response: 1408087  
 Conc: 23.13 ng/ml



#11 AR-1232-1

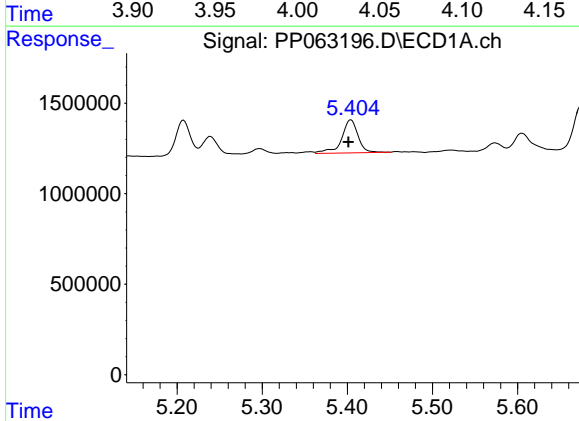
R.T.: 4.867 min  
 Delta R.T.: 0.003 min  
 Response: 1724970  
 Conc: 32.49 ng/ml

Instrument :  
 ECD\_P  
 ClientSampleId :  
 LOD-MDL-SOIL-01-QT1-2024



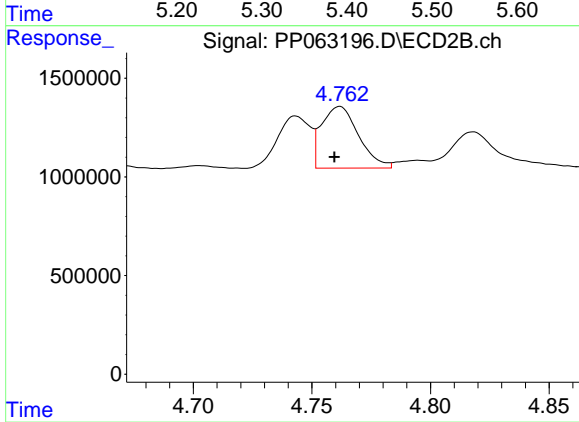
#11 AR-1232-1

R.T.: 4.028 min  
 Delta R.T.: 0.002 min  
 Response: 1408087  
 Conc: 26.20 ng/ml



#12 AR-1232-2

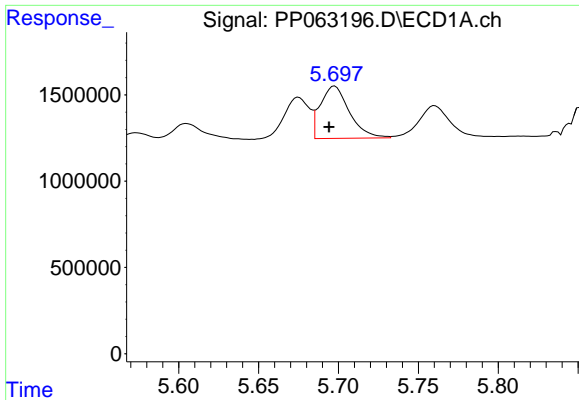
R.T.: 5.404 min  
 Delta R.T.: 0.003 min  
 Response: 2438070  
 Conc: 80.59 ng/ml



#12 AR-1232-2

R.T.: 4.762 min  
 Delta R.T.: 0.002 min  
 Response: 3401436  
 Conc: 70.98 ng/ml

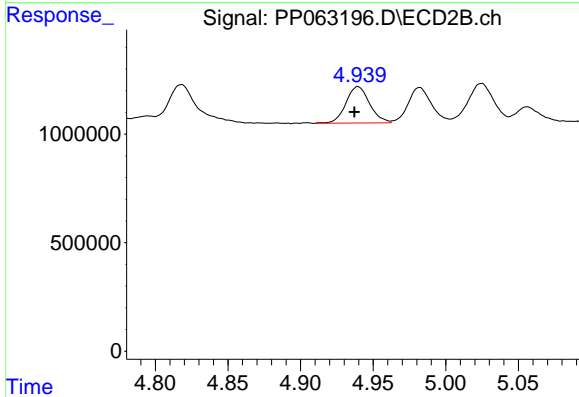




#13 AR-1232-3

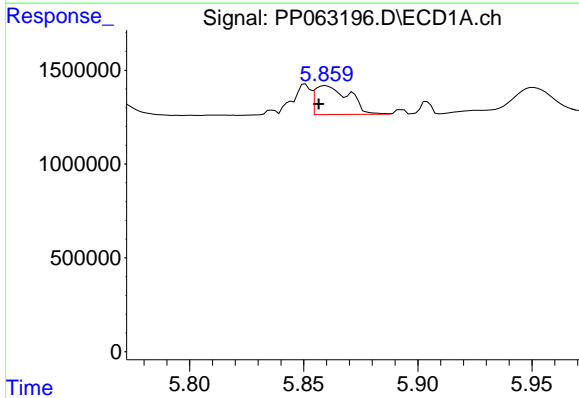
R.T.: 5.698 min  
 Delta R.T.: 0.003 min  
 Response: 3838863  
 Conc: 75.33 ng/ml

Instrument :  
 ECD\_P  
 ClientSampleId :  
 LOD-MDL-SOIL-01-QT1-2024



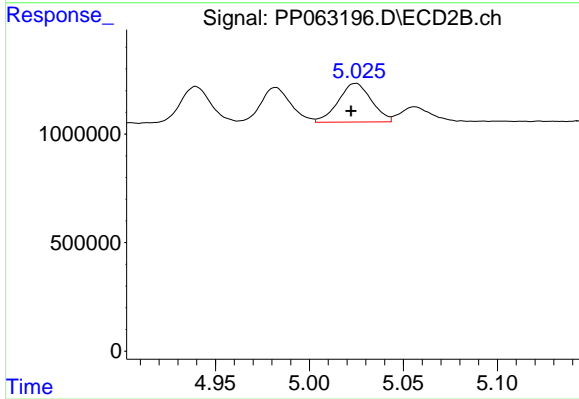
#13 AR-1232-3

R.T.: 4.940 min  
 Delta R.T.: 0.003 min  
 Response: 1898353  
 Conc: 73.08 ng/ml



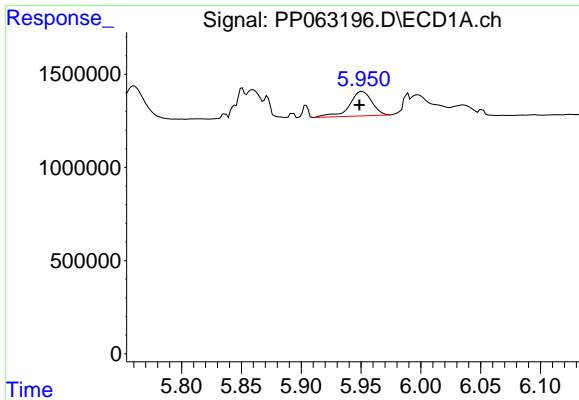
#14 AR-1232-4

R.T.: 5.860 min  
 Delta R.T.: 0.003 min  
 Response: 1593021  
 Conc: 60.63 ng/ml



#14 AR-1232-4

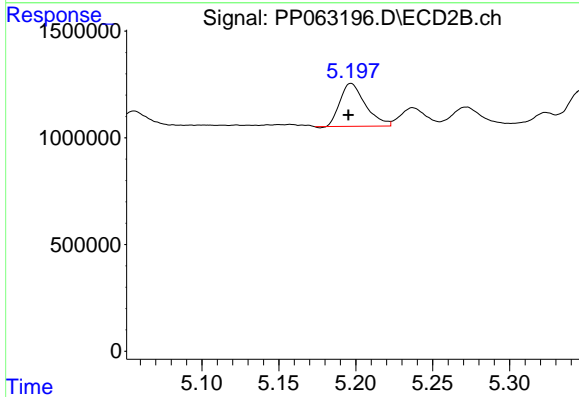
R.T.: 5.025 min  
 Delta R.T.: 0.002 min  
 Response: 2194317  
 Conc: 84.18 ng/ml



#15 AR-1232-5

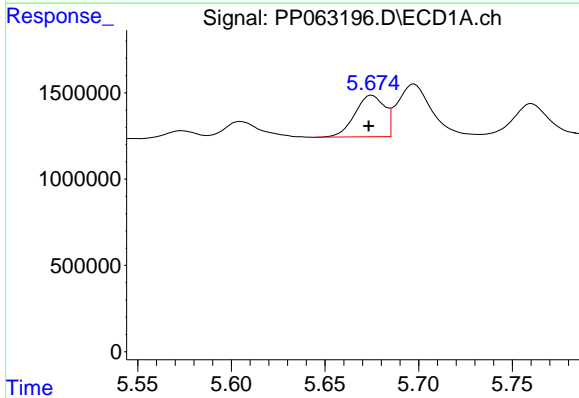
R.T.: 5.951 min  
 Delta R.T.: 0.002 min  
 Response: 1716656  
 Conc: 74.46 ng/ml

Instrument :  
 ECD\_P  
 ClientSampleId :  
 LOD-MDL-SOIL-01-QT1-2024



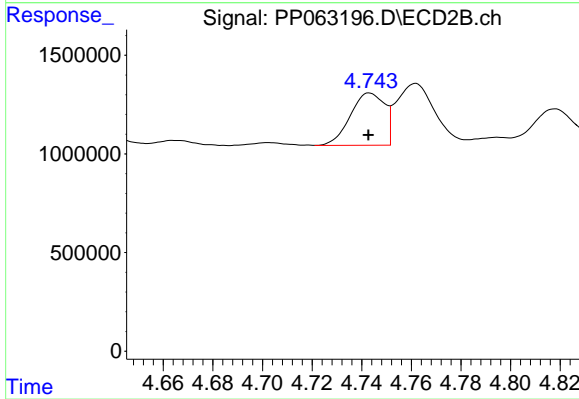
#15 AR-1232-5

R.T.: 5.197 min  
 Delta R.T.: 0.002 min  
 Response: 2287775  
 Conc: 83.91 ng/ml



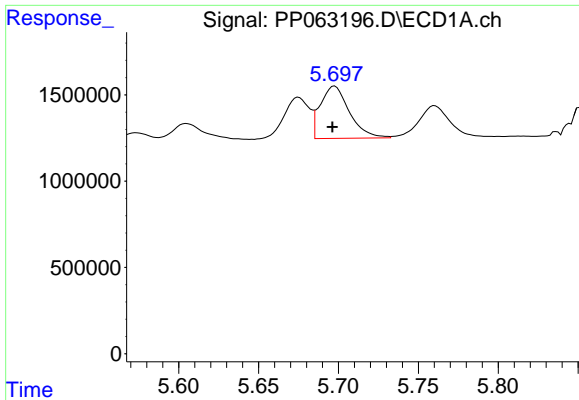
#16 AR-1242-1

R.T.: 5.675 min  
 Delta R.T.: 0.002 min  
 Response: 2641351  
 Conc: 46.39 ng/ml



#16 AR-1242-1

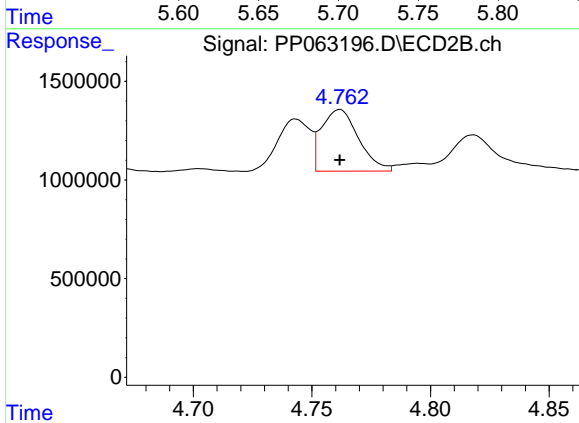
R.T.: 4.743 min  
 Delta R.T.: 0.000 min  
 Response: 2541454  
 Conc: 46.77 ng/ml



#17 AR-1242-2

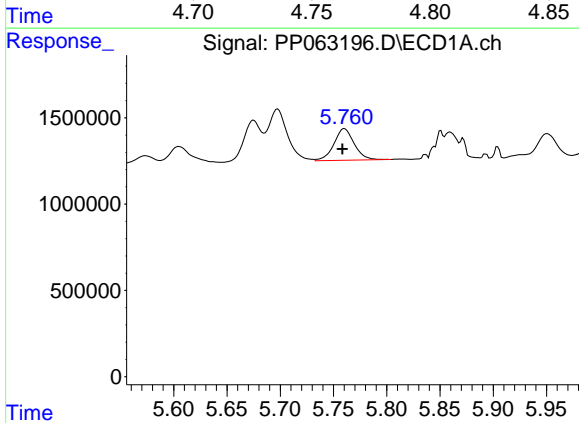
R.T.: 5.698 min  
 Delta R.T.: 0.001 min  
 Response: 3838863  
 Conc: 46.82 ng/ml

Instrument :  
 ECD\_P  
 ClientSampleId :  
 LOD-MDL-SOIL-01-QT1-2024



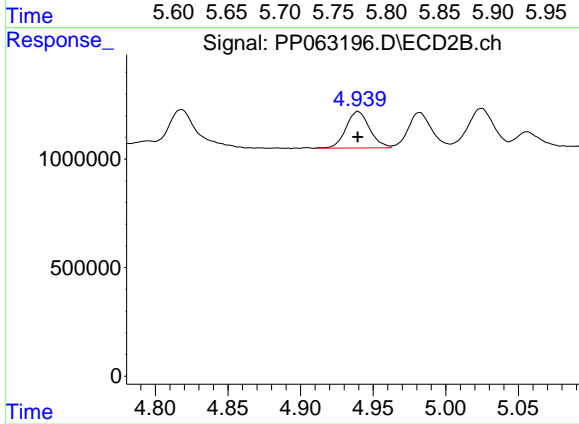
#17 AR-1242-2

R.T.: 4.762 min  
 Delta R.T.: 0.000 min  
 Response: 3401436  
 Conc: 43.67 ng/ml



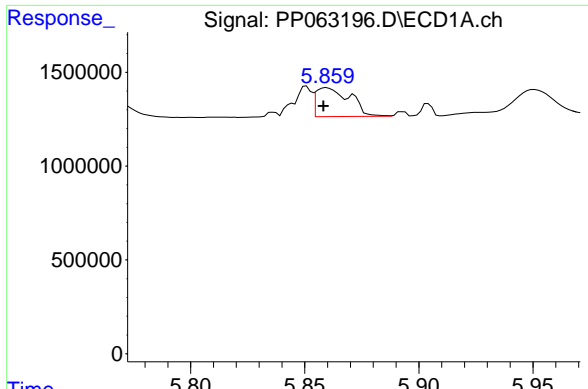
#18 AR-1242-3

R.T.: 5.760 min  
 Delta R.T.: 0.002 min  
 Response: 2422052  
 Conc: 46.15 ng/ml



#18 AR-1242-3

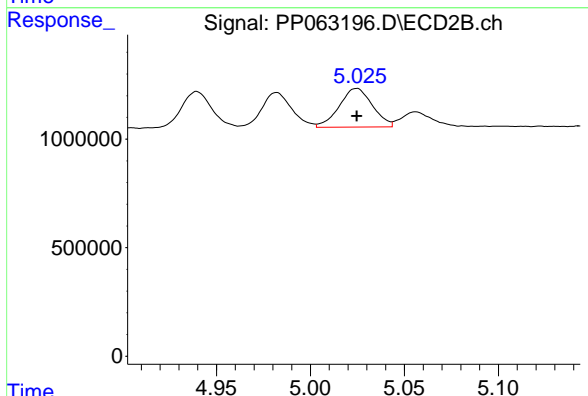
R.T.: 4.940 min  
 Delta R.T.: 0.000 min  
 Response: 1898353  
 Conc: 44.80 ng/ml



#19 AR-1242-4

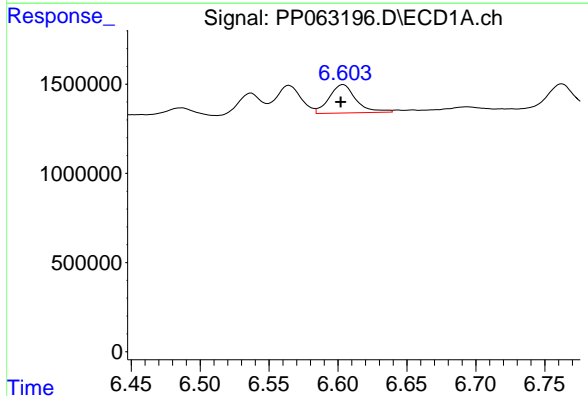
R.T.: 5.860 min  
 Delta R.T.: 0.001 min  
 Response: 1593021  
 Conc: 37.10 ng/ml

Instrument :  
 ECD\_P  
 ClientSampleId :  
 LOD-MDL-SOIL-01-QT1-2024



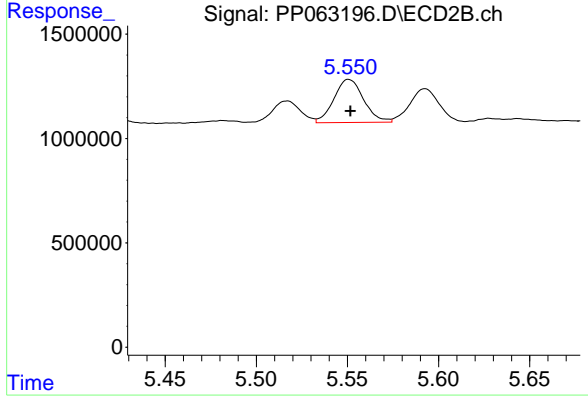
#19 AR-1242-4

R.T.: 5.025 min  
 Delta R.T.: 0.000 min  
 Response: 2194317  
 Conc: 46.98 ng/ml



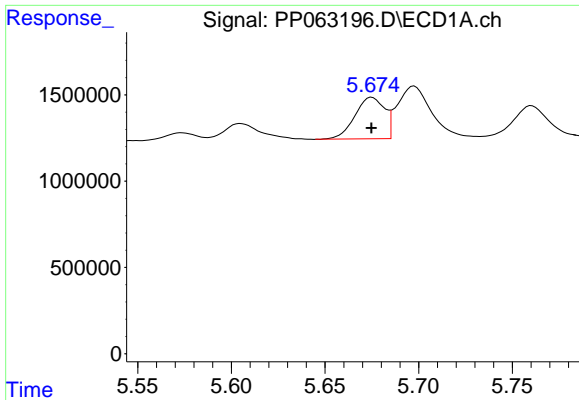
#20 AR-1242-5

R.T.: 6.604 min  
 Delta R.T.: 0.002 min  
 Response: 2156087  
 Conc: 48.35 ng/ml



#20 AR-1242-5

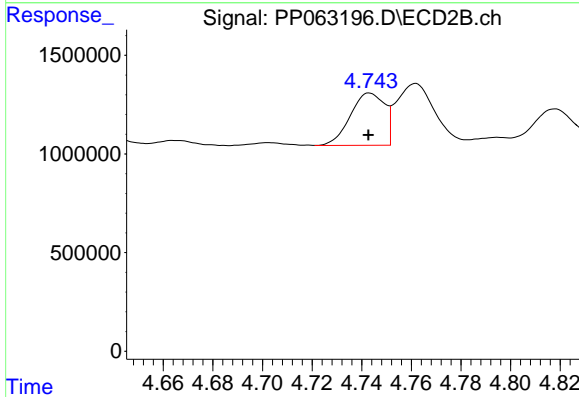
R.T.: 5.551 min  
 Delta R.T.: 0.000 min  
 Response: 2342065  
 Conc: 45.25 ng/ml



#21 AR-1248-1

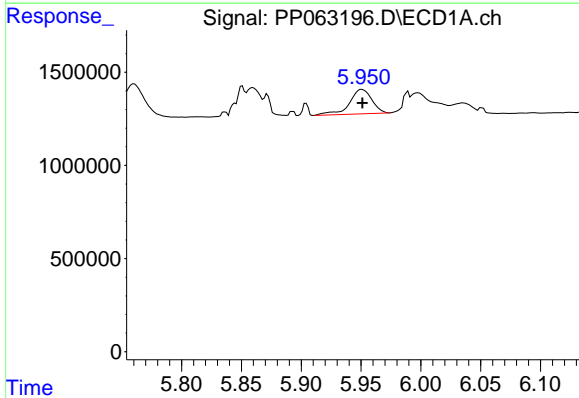
R.T.: 5.675 min  
 Delta R.T.: 0.000 min  
 Response: 2641351  
 Conc: 59.56 ng/ml

Instrument :  
 ECD\_P  
 ClientSampleId :  
 LOD-MDL-SOIL-01-QT1-2024



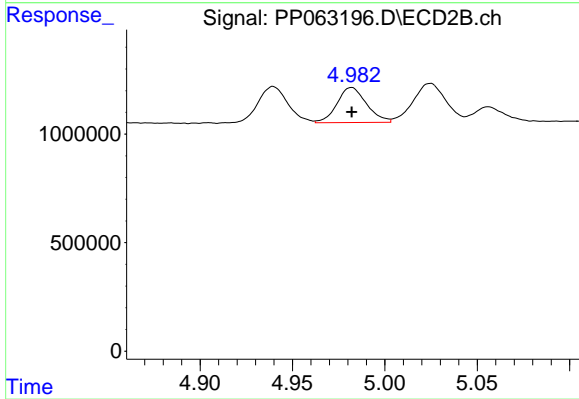
#21 AR-1248-1

R.T.: 4.743 min  
 Delta R.T.: 0.000 min  
 Response: 2541454  
 Conc: 61.35 ng/ml



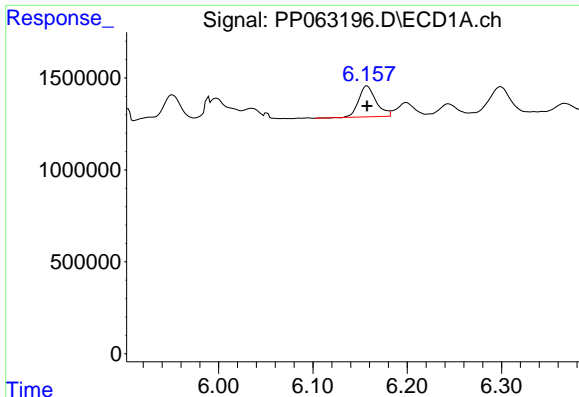
#22 AR-1248-2

R.T.: 5.951 min  
 Delta R.T.: 0.000 min  
 Response: 1716656  
 Conc: 23.89 ng/ml



#22 AR-1248-2

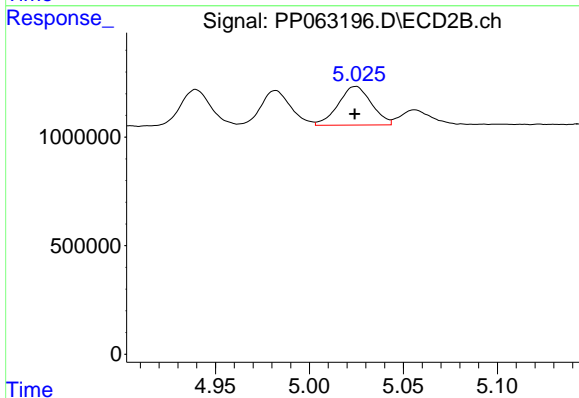
R.T.: 4.982 min  
 Delta R.T.: 0.000 min  
 Response: 1794359  
 Conc: 27.12 ng/ml



#23 AR-1248-3

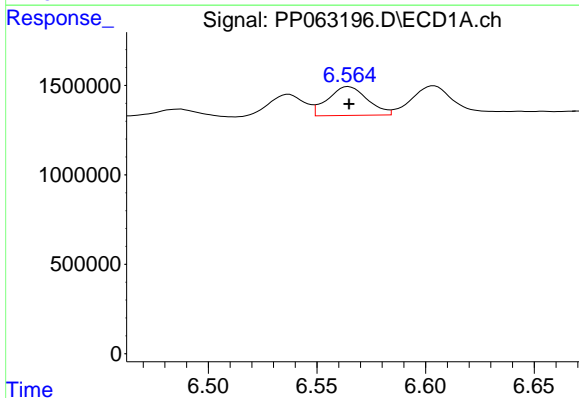
R.T.: 6.157 min  
 Delta R.T.: 0.000 min  
 Response: 2180247  
 Conc: 28.06 ng/ml

Instrument :  
 ECD\_P  
 ClientSampleId :  
 LOD-MDL-SOIL-01-QT1-2024



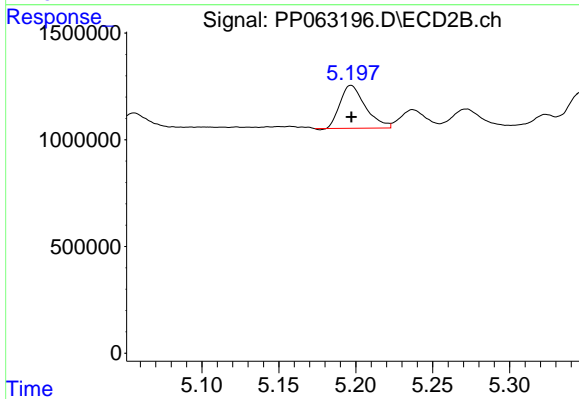
#23 AR-1248-3

R.T.: 5.025 min  
 Delta R.T.: 0.000 min  
 Response: 2194317  
 Conc: 31.32 ng/ml



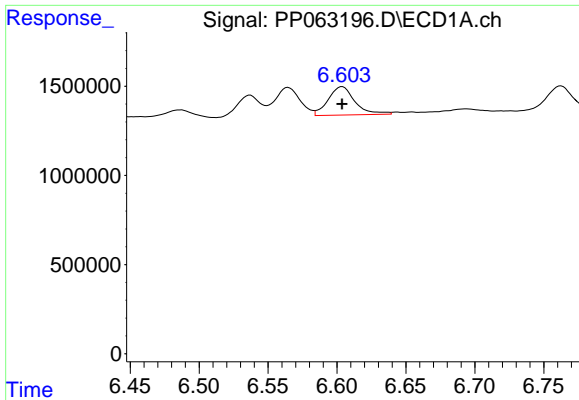
#24 AR-1248-4

R.T.: 6.565 min  
 Delta R.T.: 0.000 min  
 Response: 2045348  
 Conc: 27.45 ng/ml



#24 AR-1248-4

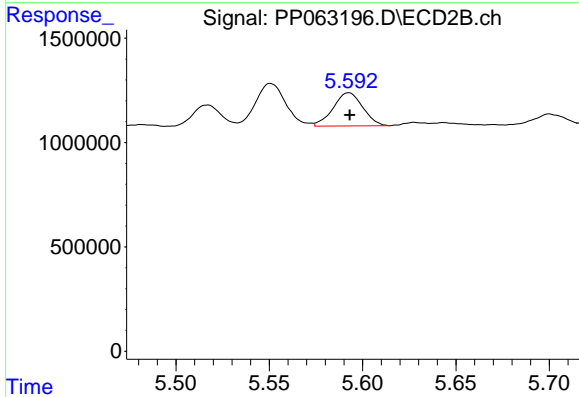
R.T.: 5.197 min  
 Delta R.T.: 0.000 min  
 Response: 2287775  
 Conc: 28.63 ng/ml



#25 AR-1248-5

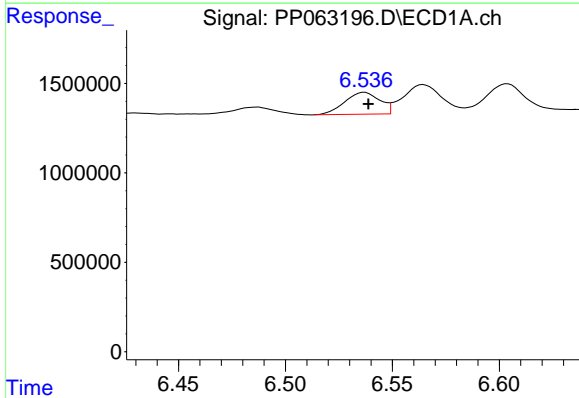
R.T.: 6.604 min  
 Delta R.T.: 0.000 min  
 Response: 2156087  
 Conc: 27.72 ng/ml

Instrument :  
 ECD\_P  
 ClientSampleId :  
 LOD-MDL-SOIL-01-QT1-2024



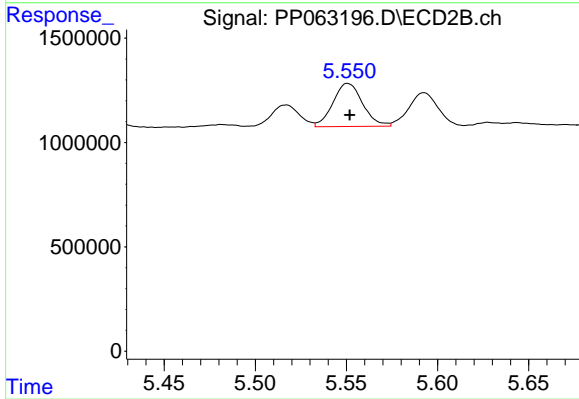
#25 AR-1248-5

R.T.: 5.593 min  
 Delta R.T.: 0.000 min  
 Response: 1755604  
 Conc: 25.59 ng/ml



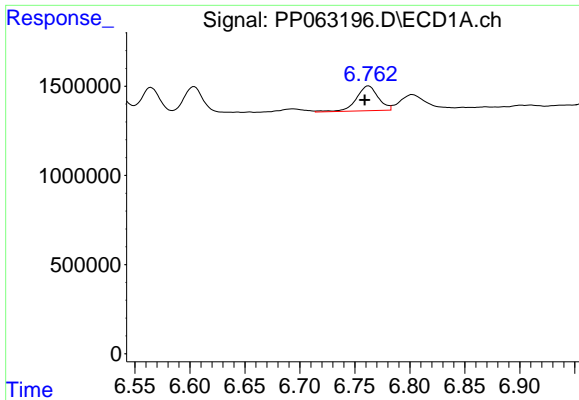
#26 AR-1254-1

R.T.: 6.537 min  
 Delta R.T.: -0.002 min  
 Response: 1394330  
 Conc: 15.59 ng/ml



#26 AR-1254-1

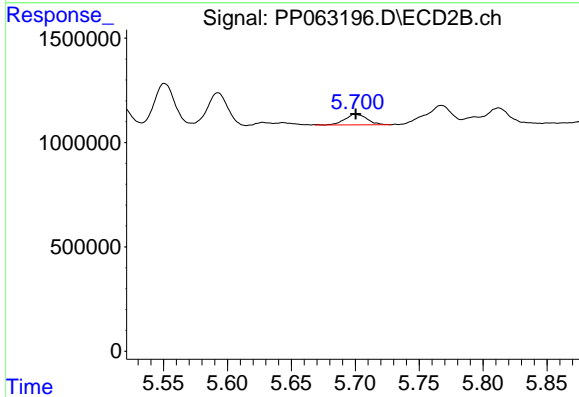
R.T.: 5.551 min  
 Delta R.T.: 0.000 min  
 Response: 2342065  
 Conc: 19.31 ng/ml



#27 AR-1254-2

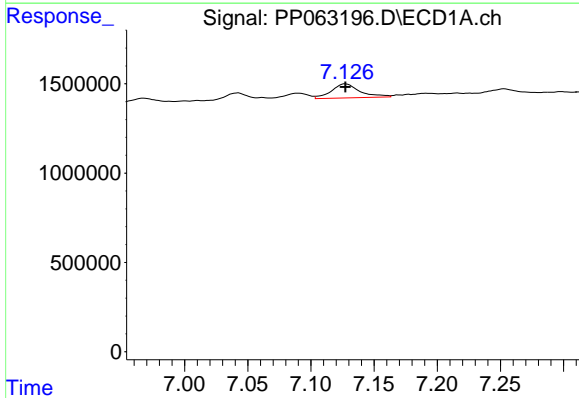
R.T.: 6.763 min  
 Delta R.T.: 0.003 min  
 Response: 1918458  
 Conc: 14.62 ng/ml

Instrument :  
 ECD\_P  
 ClientSampleId :  
 LOD-MDL-SOIL-01-QT1-2024



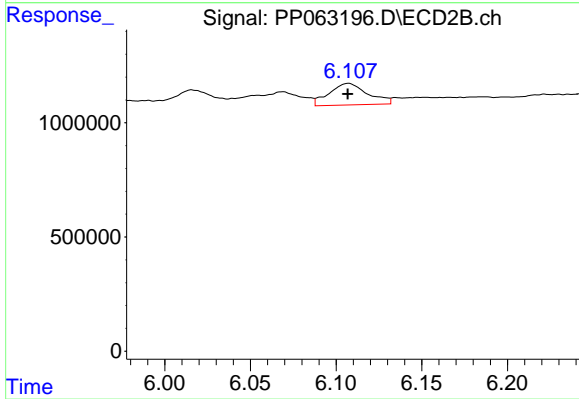
#27 AR-1254-2

R.T.: 5.700 min  
 Delta R.T.: 0.000 min  
 Response: 618656  
 Conc: 5.70 ng/ml



#28 AR-1254-3

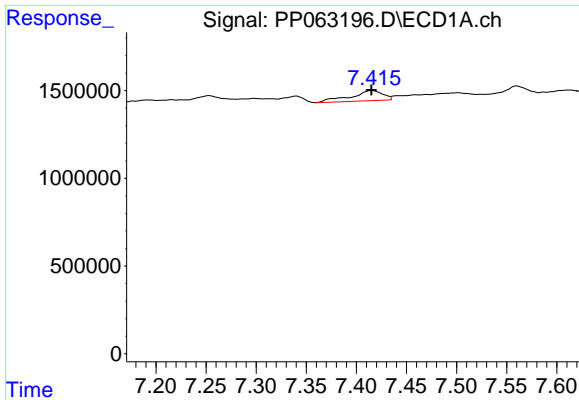
R.T.: 7.127 min  
 Delta R.T.: 0.000 min  
 Response: 1244619  
 Conc: 9.31 ng/ml



#28 AR-1254-3

R.T.: 6.107 min  
 Delta R.T.: 0.000 min  
 Response: 1476913  
 Conc: 8.62 ng/ml

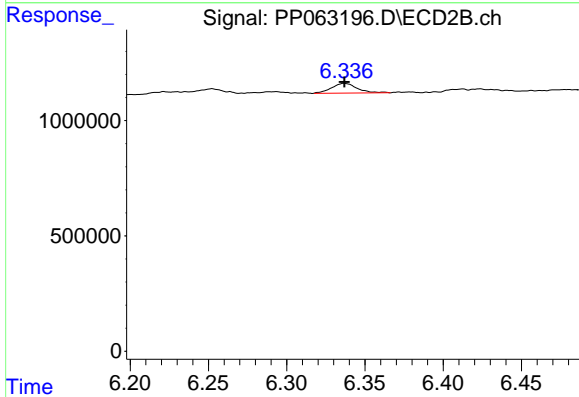




#29 AR-1254-4

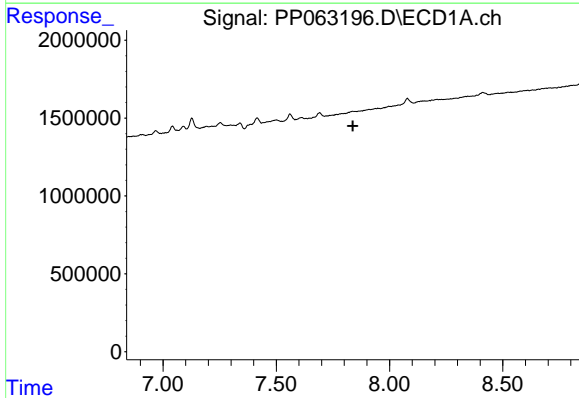
R.T.: 7.416 min  
 Delta R.T.: 0.000 min  
 Response: 1292747  
 Conc: 16.37 ng/ml

Instrument :  
 ECD\_P  
 ClientSampleId :  
 LOD-MDL-SOIL-01-QT1-2024



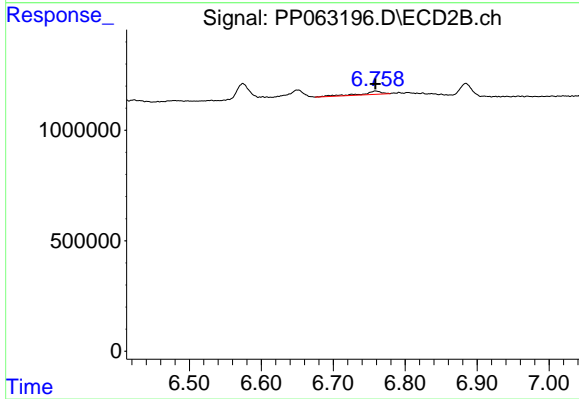
#29 AR-1254-4

R.T.: 6.337 min  
 Delta R.T.: 0.000 min  
 Response: 486076  
 Conc: 5.97 ng/ml



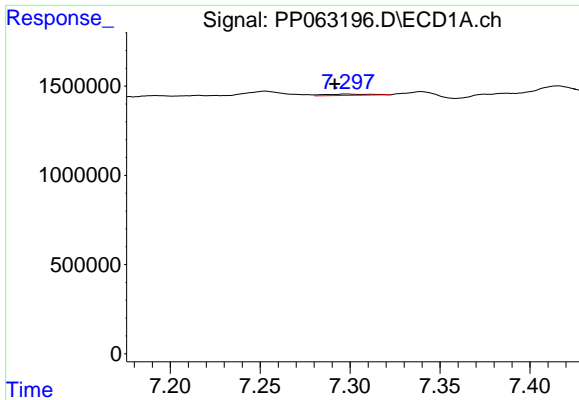
#30 AR-1254-5

R.T.: 0.000 min  
 Exp R.T. : 7.838 min  
 Response: 0  
 Conc: N.D.



#30 AR-1254-5

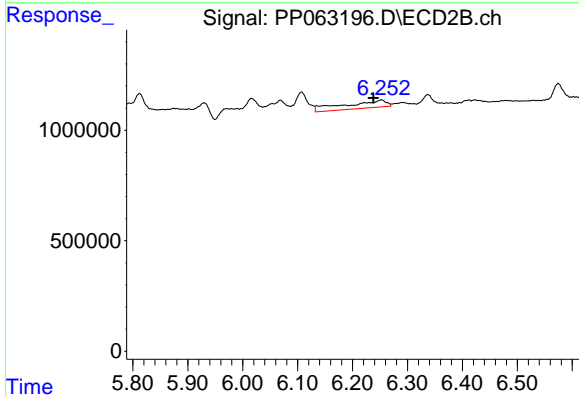
R.T.: 6.759 min  
 Delta R.T.: 0.000 min  
 Response: 283596  
 Conc: 2.00 ng/ml



#31 AR-1260-1

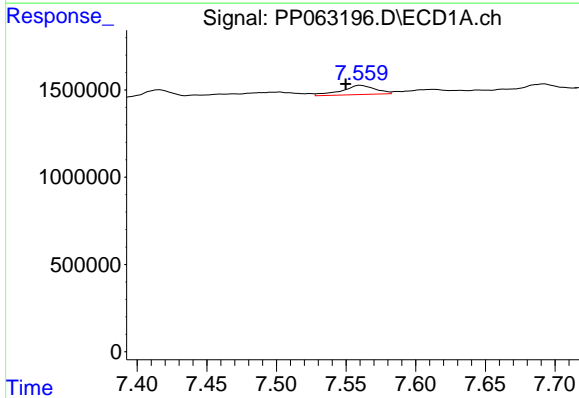
R.T.: 7.298 min  
 Delta R.T.: 0.007 min  
 Response: 126621  
 Conc: 1.04 ng/ml

Instrument :  
 ECD\_P  
 ClientSampleId :  
 LOD-MDL-SOIL-01-QT1-2024



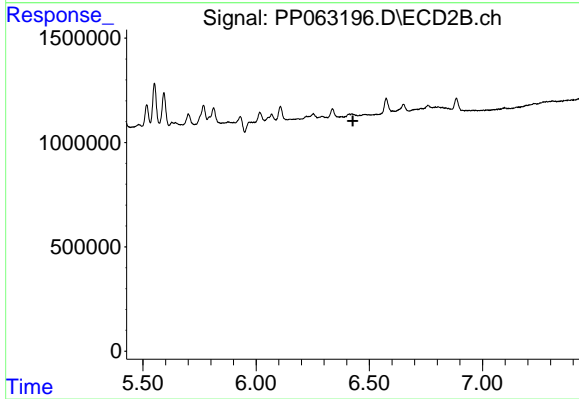
#31 AR-1260-1

R.T.: 6.252 min  
 Delta R.T.: 0.014 min  
 Response: 1816983  
 Conc: 13.71 ng/ml



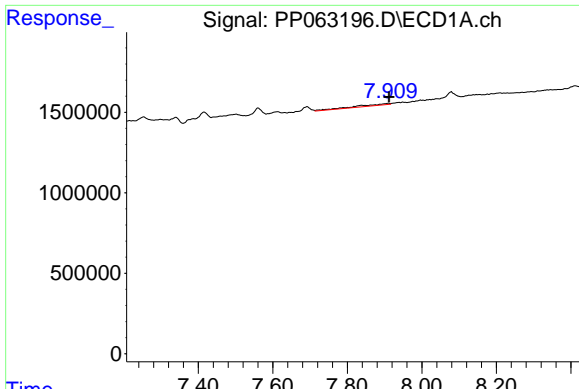
#32 AR-1260-2

R.T.: 7.560 min  
 Delta R.T.: 0.010 min  
 Response: 877545  
 Conc: 6.90 ng/ml



#32 AR-1260-2

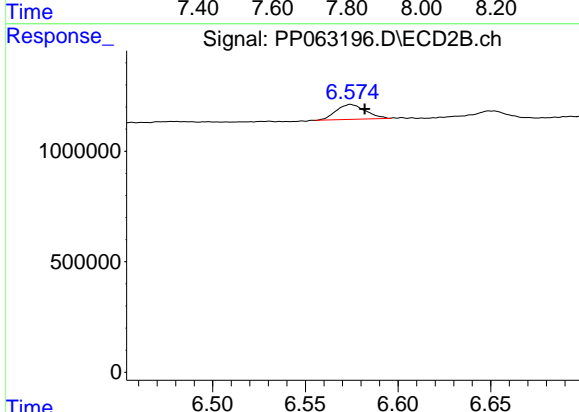
R.T.: 0.000 min  
 Exp R.T. : 6.427 min  
 Response: 0  
 Conc: N.D.



#33 AR-1260-3

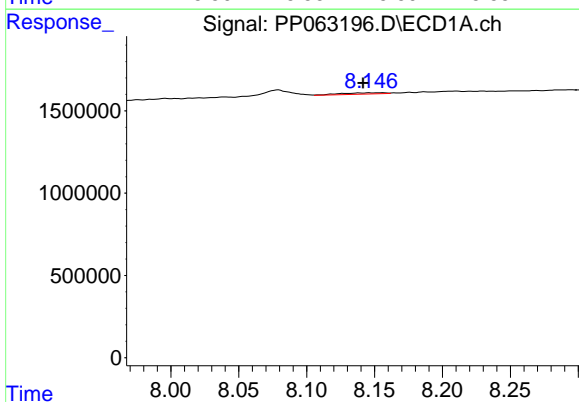
R.T.: 7.910 min  
 Delta R.T.: -0.002 min  
 Response: 615960  
 Conc: 5.96 ng/ml

Instrument : ECD\_P  
 ClientSampleId : LOD-MDL-SOIL-01-QT1-2024



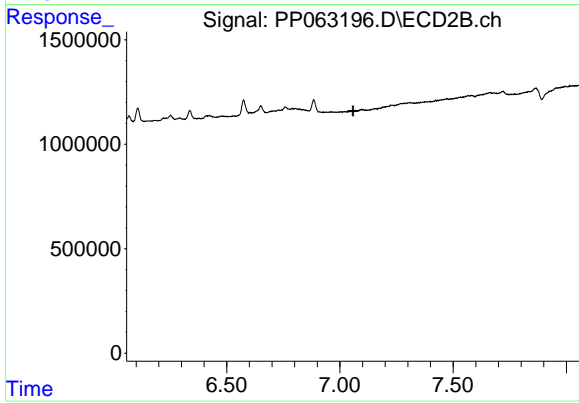
#33 AR-1260-3

R.T.: 6.575 min  
 Delta R.T.: -0.007 min  
 Response: 742600  
 Conc: 5.12 ng/ml



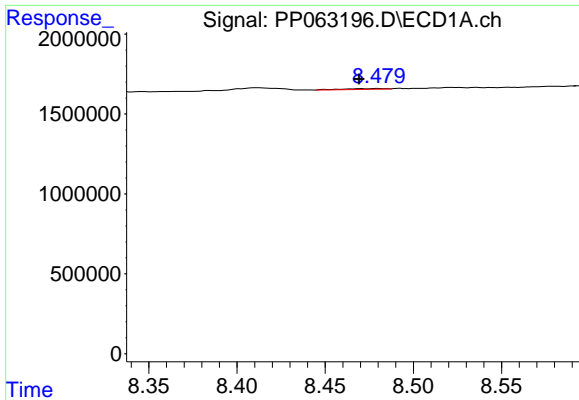
#34 AR-1260-4

R.T.: 8.156 min  
 Delta R.T.: 0.015 min  
 Response: 167544  
 Conc: 1.43 ng/ml



#34 AR-1260-4

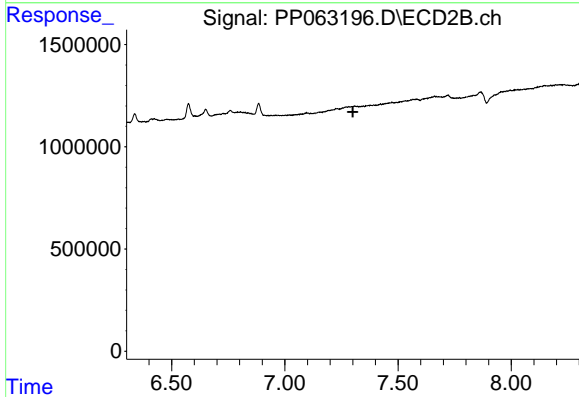
R.T.: 0.000 min  
 Exp R.T. : 7.058 min  
 Response: 0  
 Conc: N.D.



#35 AR-1260-5

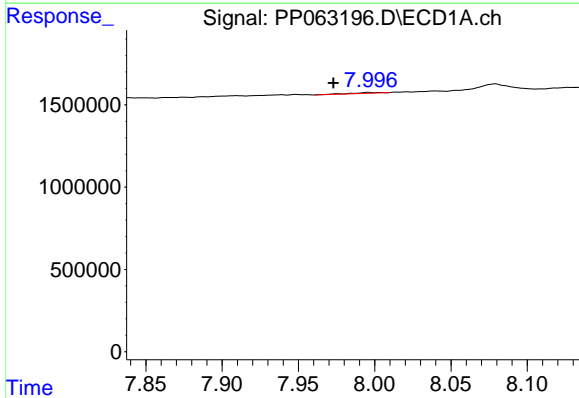
R.T.: 8.479 min  
 Delta R.T.: 0.010 min  
 Response: 78512  
 Conc: 0.40 ng/ml

Instrument :  
 ECD\_P  
 ClientSampleId :  
 LOD-MDL-SOIL-01-QT1-2024



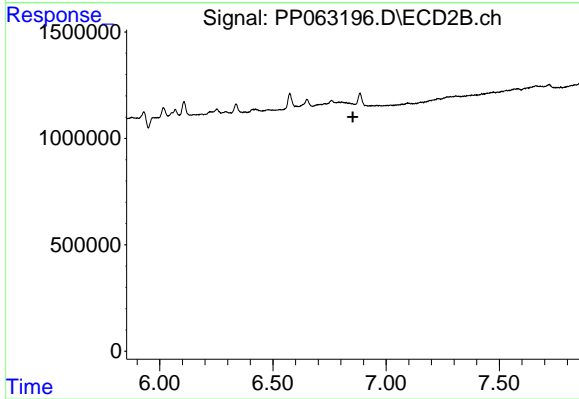
#35 AR-1260-5

R.T.: 0.000 min  
 Exp R.T. : 7.301 min  
 Response: 0  
 Conc: N.D.



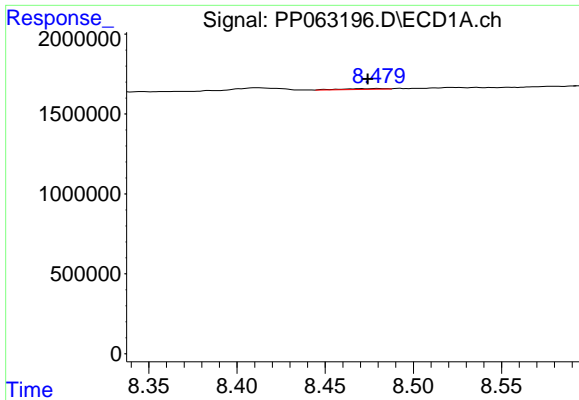
#36 AR-1262-1

R.T.: 7.996 min  
 Delta R.T.: 0.023 min  
 Response: 114904  
 Conc: 1.82 ng/ml



#36 AR-1262-1

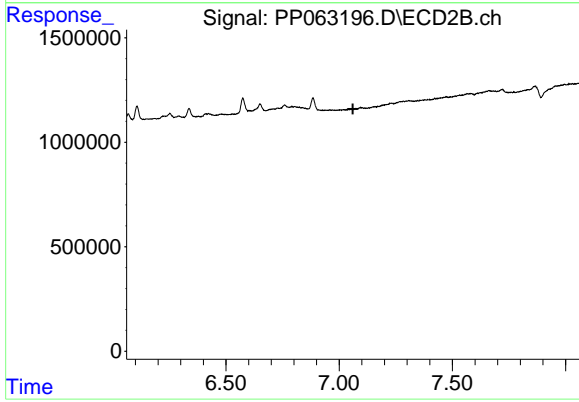
R.T.: 0.000 min  
 Exp R.T. : 6.853 min  
 Response: 0  
 Conc: N.D.



#37 AR-1262-2

R.T.: 8.479 min  
 Delta R.T.: 0.005 min  
 Response: 78512  
 Conc: 0.34 ng/ml

Instrument : ECD\_P  
 ClientSampleId : LOD-MDL-SOIL-01-QT1-2024



#37 AR-1262-2

R.T.: 0.000 min  
 Exp R.T. : 7.060 min  
 Response: 0  
 Conc: N.D.