

Data Path : Z:\pestpcbsrv\HPCHEM1\ECD_P\Data\PP020124\
 Data File : PP063194.D
 Signal(s) : Signal #1: ECD1A.ch Signal #2: ECD2B.ch
 Acq On : 01 Feb 2024 20:50
 Operator : YP\AJ
 Sample : P1187-01
 Misc : AR1221 LOD 40 PPB
 ALS Vial : 35 Sample Multiplier: 1

Instrument :
 ECD_P
ClientSampleId :
 LOD-MDL-SOIL-01-QT1-2024

Integration File signal 1: autoint1.e
 Integration File signal 2: autoint2.e
 Quant Time: Feb 02 01:40:19 2024
 Quant Method : Z:\pestpcbsrv\HPCHEM1\ECD_P\methods\PP020124.M
 Quant Title : GC EXTRACTABLES
 QLast Update : Thu Feb 01 16:28:12 2024
 Response via : Initial Calibration
 Integrator: ChemStation

Volume Inj. : 2 µl
 Signal #1 Phase : ZB-MR1 Signal #2 Phase: ZB-MR2
 Signal #1 Info : 30Mx0.32mmx 0.50µ Signal #2 Info : 30M x 0.32mm x 0.25µm

Compound	RT#1	RT#2	Resp#1	Resp#2	ng/ml	ng/ml

System Monitoring Compounds						
1) SA Tetrachlo...	4.492	3.647	50175232	49039145	20.977	20.632
2) SA Decachlor...	10.365	8.706	50908989	54092537	22.638	21.837
Target Compounds						
8) L2 AR-1221-1	4.702	3.864	1113080	945528	40.002	35.757
9) L2 AR-1221-2	4.801	3.950	1573816	1223979	73.767	61.967
10) L2 AR-1221-3	4.868	4.027	2132456	2104250	34.617	34.562

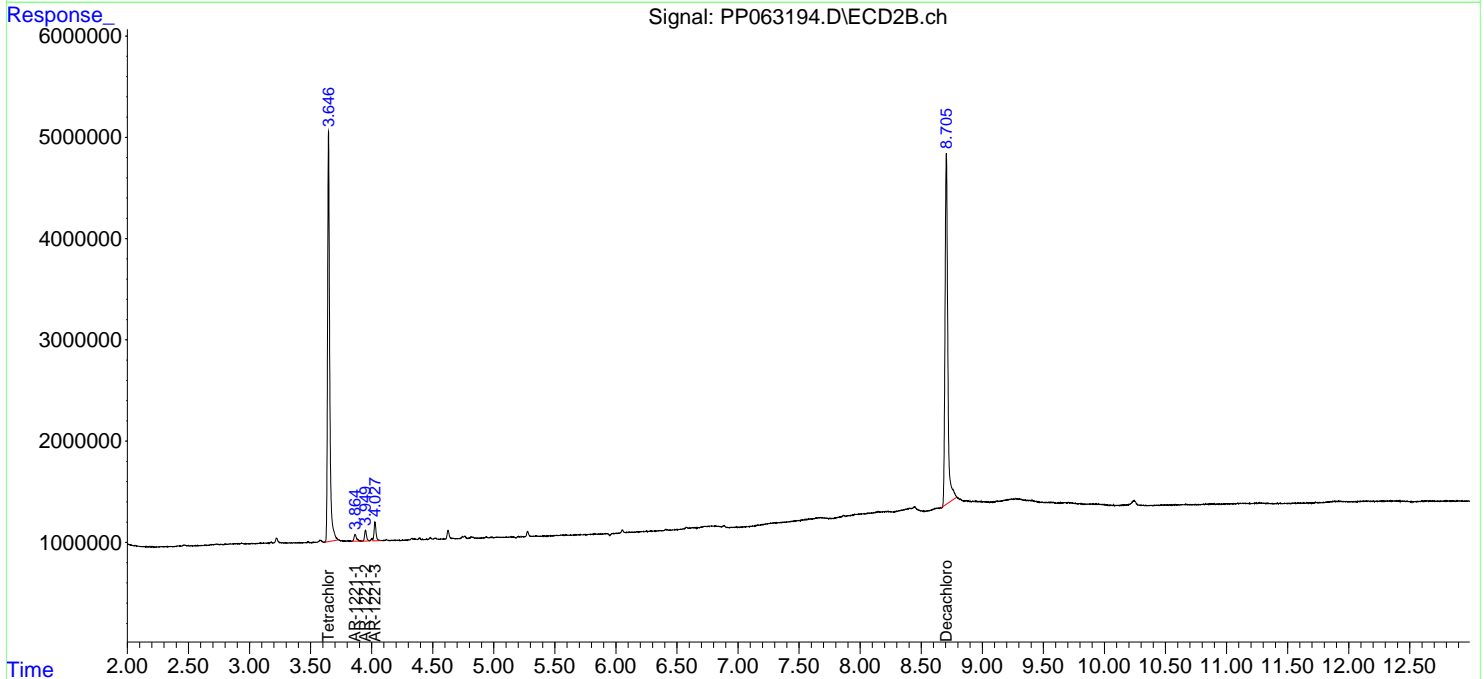
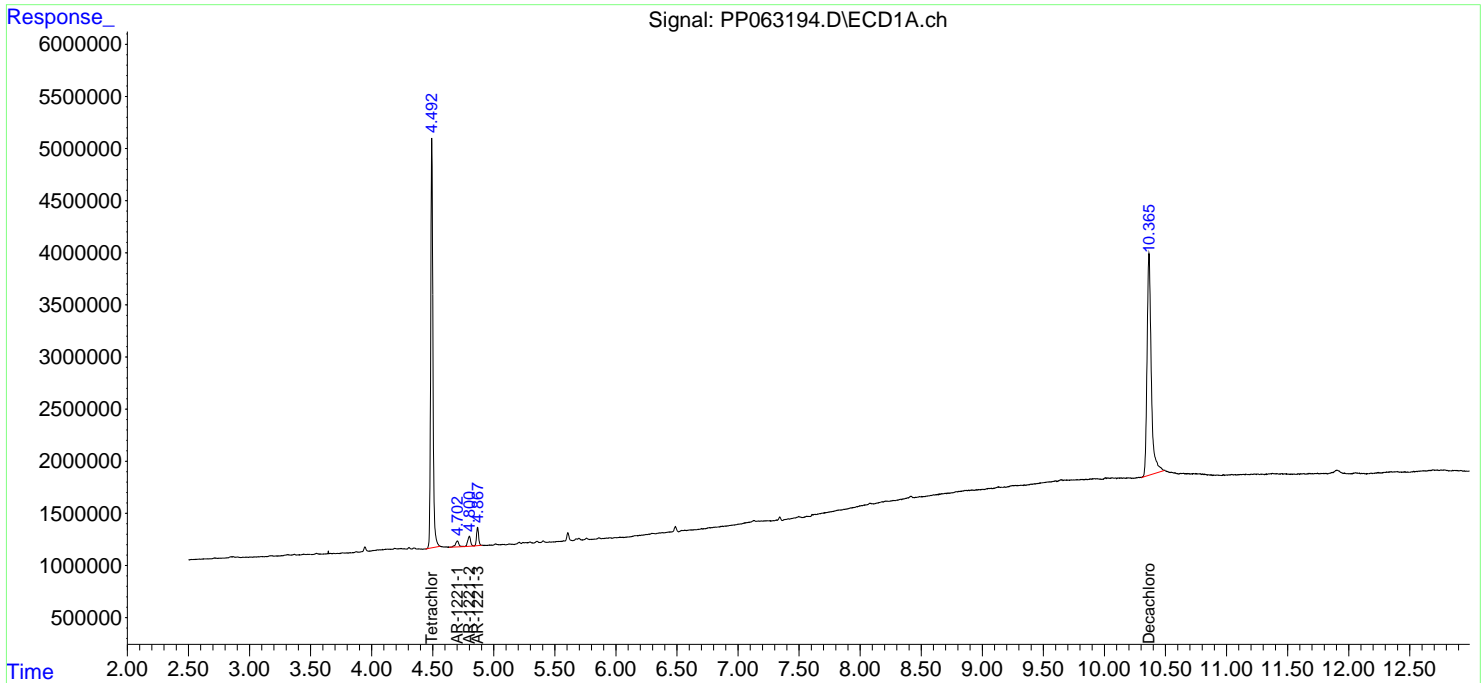
(f)=RT Delta > 1/2 Window (#)=Amounts differ by > 25% (m)=manual int.

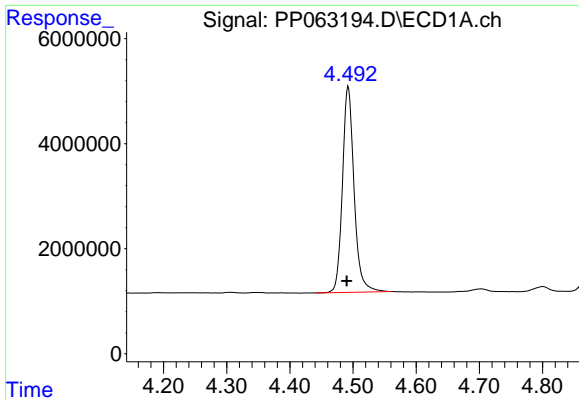
Data Path : Z:\pestpcbsrv\HPCHEM1\ECD_P\Data\PP020124\
 Data File : PP063194.D
 Signal(s) : Signal #1: ECD1A.ch Signal #2: ECD2B.ch
 Acq On : 01 Feb 2024 20:50
 Operator : YP\AJ
 Sample : P1187-01
 Misc : AR1221 LOD 40 PPB
 ALS Vial : 35 Sample Multiplier: 1

Instrument :
 ECD_P
 ClientSampleId :
 LOD-MDL-SOIL-01-QT1-2024

Integration File signal 1: autoint1.e
 Integration File signal 2: autoint2.e
 Quant Time: Feb 02 01:40:19 2024
 Quant Method : Z:\pestpcbsrv\HPCHEM1\ECD_P\methods\PP020124.M
 Quant Title : GC EXTRACTABLES
 QLast Update : Thu Feb 01 16:28:12 2024
 Response via : Initial Calibration
 Integrator: ChemStation

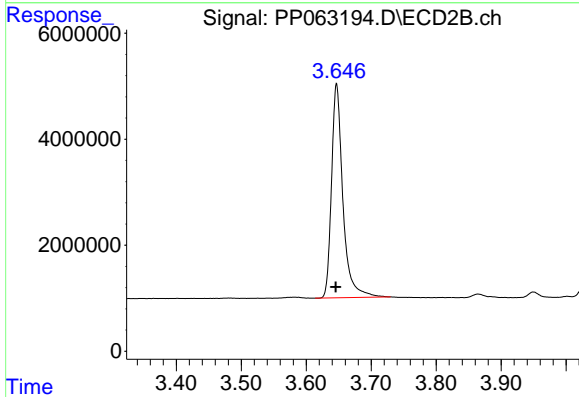
Volume Inj. : 2 µl
 Signal #1 Phase : ZB-MR1 Signal #2 Phase: ZB-MR2
 Signal #1 Info : 30Mx0.32mmx 0.50µ Signal #2 Info : 30M x 0.32mm x 0.25µm



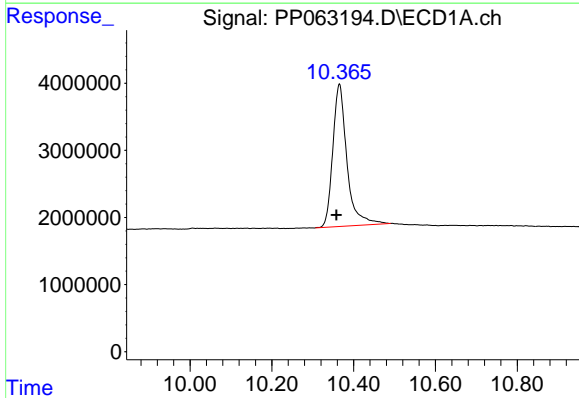


#1 Tetrachloro-m-xylene
R.T.: 4.492 min
Delta R.T.: 0.002 min
Response: 50175232
Conc: 20.98 ng/ml

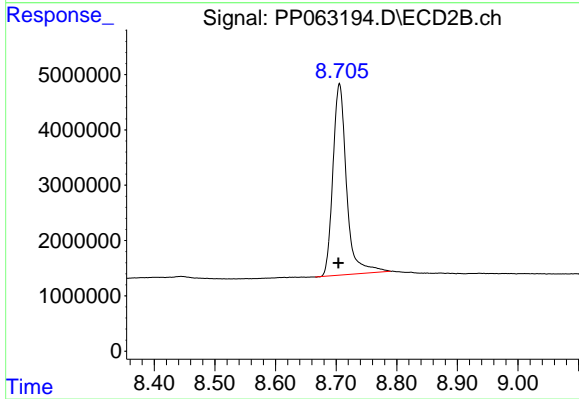
Instrument :
ECD_P
ClientSampleId :
LOD-MDL-SOIL-01-QT1-2024



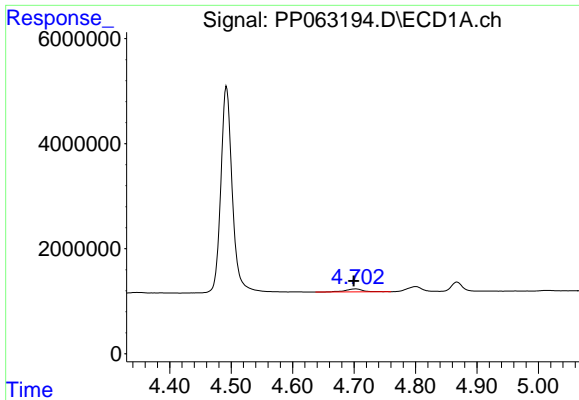
#1 Tetrachloro-m-xylene
R.T.: 3.647 min
Delta R.T.: 0.001 min
Response: 49039145
Conc: 20.63 ng/ml



#2 Decachlorobiphenyl
R.T.: 10.365 min
Delta R.T.: 0.007 min
Response: 50908989
Conc: 22.64 ng/ml



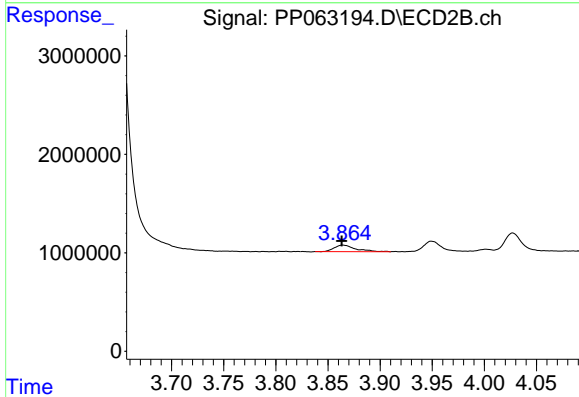
#2 Decachlorobiphenyl
R.T.: 8.706 min
Delta R.T.: 0.002 min
Response: 54092537
Conc: 21.84 ng/ml



#8 AR-1221-1

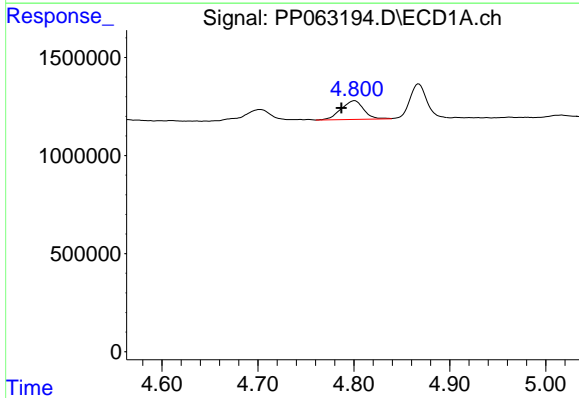
R.T.: 4.702 min
 Delta R.T.: 0.003 min
 Response: 1113080
 Conc: 40.00 ng/ml

Instrument :
 ECD_P
 ClientSampleId :
 LOD-MDL-SOIL-01-QT1-2024



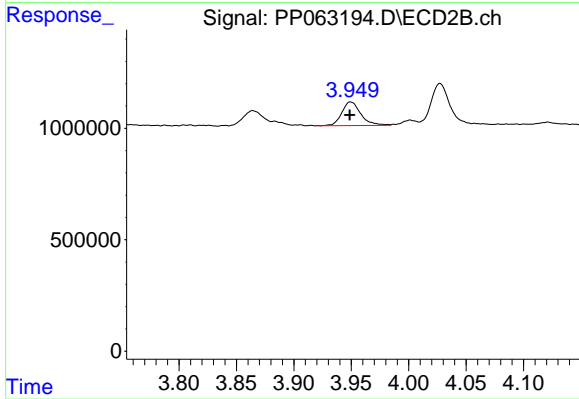
#8 AR-1221-1

R.T.: 3.864 min
 Delta R.T.: 0.001 min
 Response: 945528
 Conc: 35.76 ng/ml



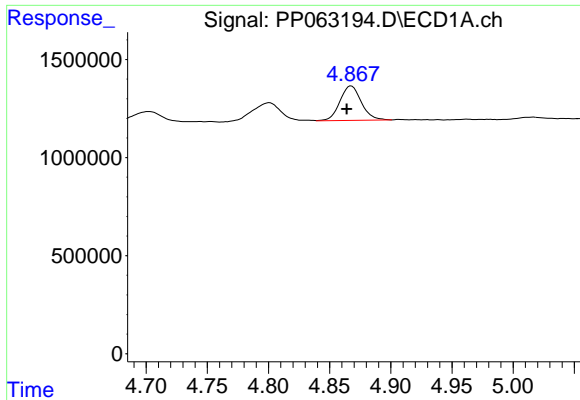
#9 AR-1221-2

R.T.: 4.801 min
 Delta R.T.: 0.014 min
 Response: 1573816
 Conc: 73.77 ng/ml



#9 AR-1221-2

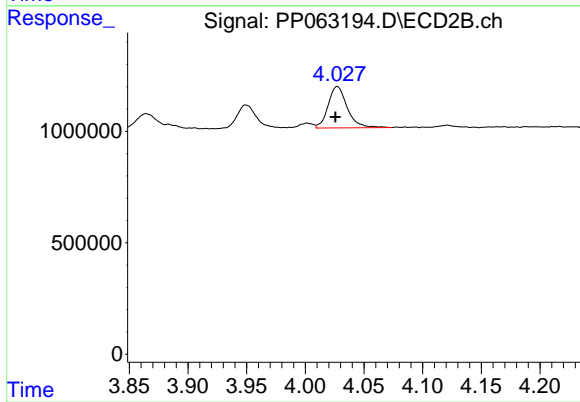
R.T.: 3.950 min
 Delta R.T.: 0.000 min
 Response: 1223979
 Conc: 61.97 ng/ml



#10 AR-1221-3

R.T.: 4.868 min
 Delta R.T.: 0.004 min
 Response: 2132456
 Conc: 34.62 ng/ml

Instrument :
 ECD_P
 ClientSampleId :
 LOD-MDL-SOIL-01-QT1-2024



#10 AR-1221-3

R.T.: 4.027 min
 Delta R.T.: 0.002 min
 Response: 2104250
 Conc: 34.56 ng/ml