

Data Path : Z:\pestpcbsrv\HPCHEM1\ECD_P\Data\PP020124\
 Data File : PP063195.D
 Signal(s) : Signal #1: ECD1A.ch Signal #2: ECD2B.ch
 Acq On : 01 Feb 2024 21:06
 Operator : YP\AJ
 Sample : P1187-01
 Misc : AR1232 LOD 40 PPB
 ALS Vial : 36 Sample Multiplier: 1

Instrument :
 ECD_P
ClientSampleId :
 LOD-MDL-SOIL-01-QT1-2024

Integration File signal 1: autoint1.e
 Integration File signal 2: autoint2.e
 Quant Time: Feb 02 01:40:37 2024
 Quant Method : Z:\pestpcbsrv\HPCHEM1\ECD_P\methods\PP020124.M
 Quant Title : GC EXTRACTABLES
 QLast Update : Thu Feb 01 16:28:12 2024
 Response via : Initial Calibration
 Integrator: ChemStation

Volume Inj. : 2 µl
 Signal #1 Phase : ZB-MR1 Signal #2 Phase: ZB-MR2
 Signal #1 Info : 30Mx0.32mmx 0.50µ Signal #2 Info : 30M x 0.32mm x 0.25µm

Compound	RT#1	RT#2	Resp#1	Resp#2	ng/ml	ng/ml

System Monitoring Compounds						
1) SA Tetrachlo...	4.492	3.646	52462718	51523595	21.933	21.677
2) SA Decachlor...	10.364	8.704	54142723	58646254	24.076	23.675
Target Compounds						
11) L3 AR-1232-1	4.866	4.027	2434047	2107024	45.844	39.202
12) L3 AR-1232-2	5.404	4.761	1224535	2027749	40.478	42.315
13) L3 AR-1232-3	5.696	4.938	2099862	1041087	41.205	40.079
14) L3 AR-1232-4	5.859	5.023	975725	1112771	37.136	42.688
15) L3 AR-1232-5	5.950	5.196	1005022	1212999	43.593	44.489

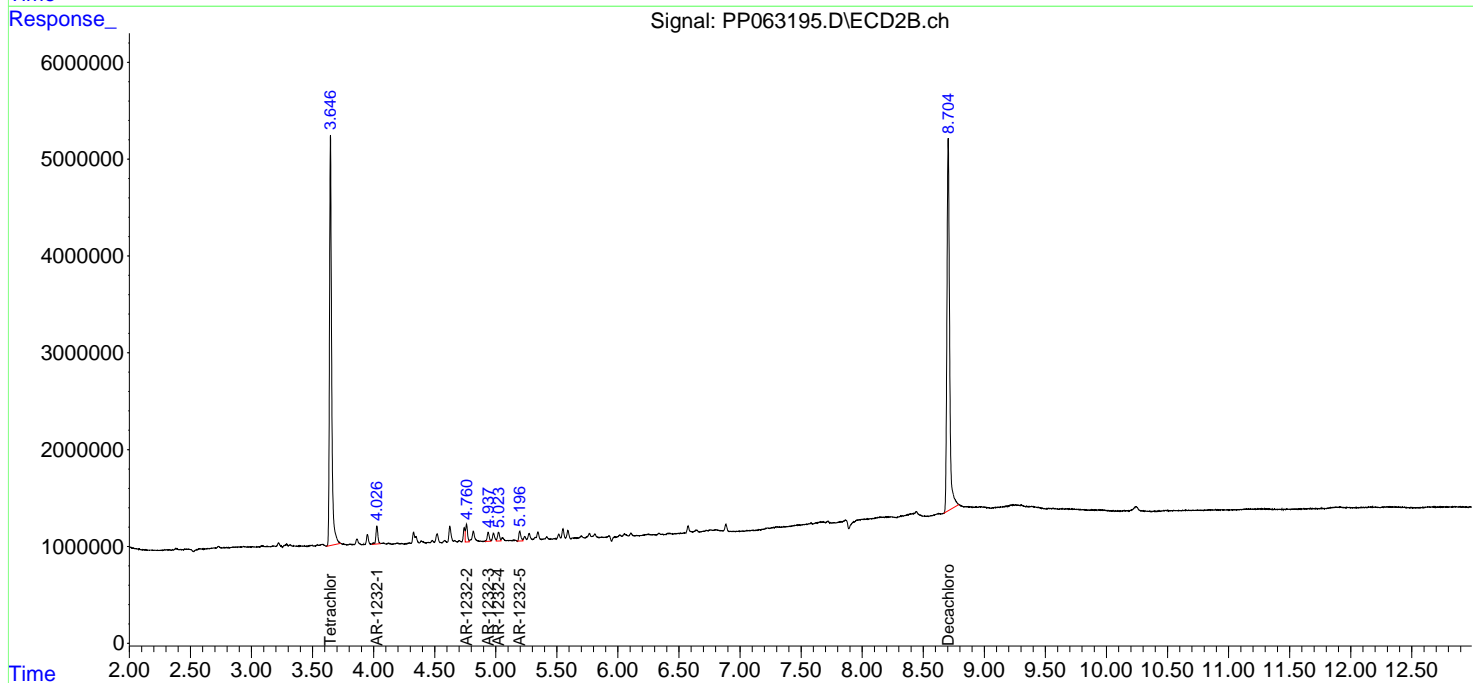
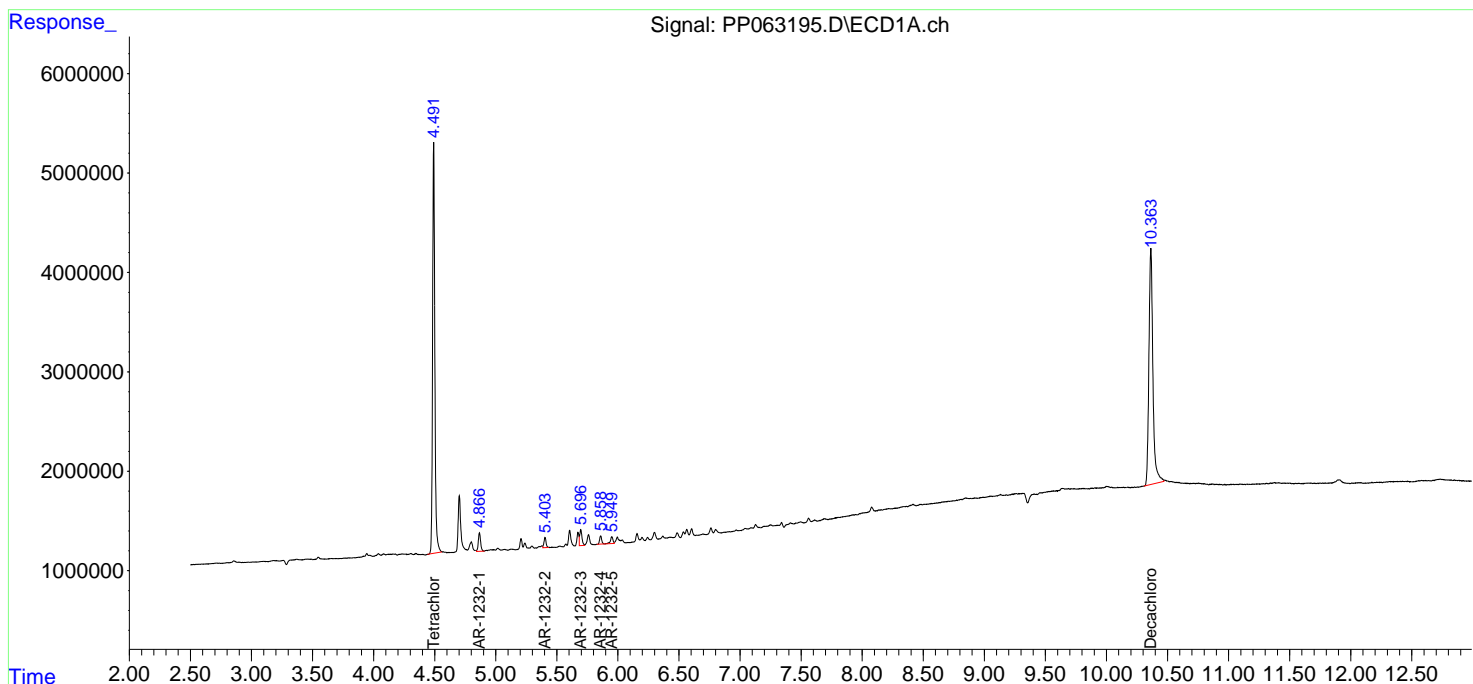
(f)=RT Delta > 1/2 Window (#)=Amounts differ by > 25% (m)=manual int.

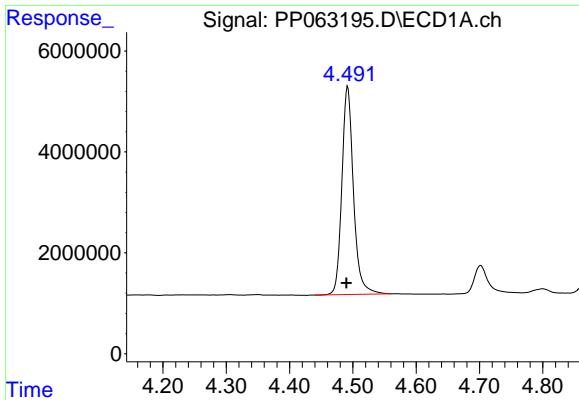
Data Path : Z:\pestpcbsrv\HPCHEM1\ECD_P\Data\PP020124\
Data File : PP063195.D
Signal(s) : Signal #1: ECD1A.ch Signal #2: ECD2B.ch
Acq On : 01 Feb 2024 21:06
Operator : YP\AJ
Sample : P1187-01
Misc : AR1232 LOD 40 PPB
ALS Vial : 36 Sample Multiplier: 1

Instrument :
ECD_P
ClientSampleId :
LOD-MDL-SOIL-01-QT1-2024

Integration File signal 1: autoint1.e
Integration File signal 2: autoint2.e
Quant Time: Feb 02 01:40:37 2024
Quant Method : Z:\pestpcbsrv\HPCHEM1\ECD_P\methods\PP020124.M
Quant Title : GC EXTRACTABLES
QLast Update : Thu Feb 01 16:28:12 2024
Response via : Initial Calibration
Integrator: ChemStation

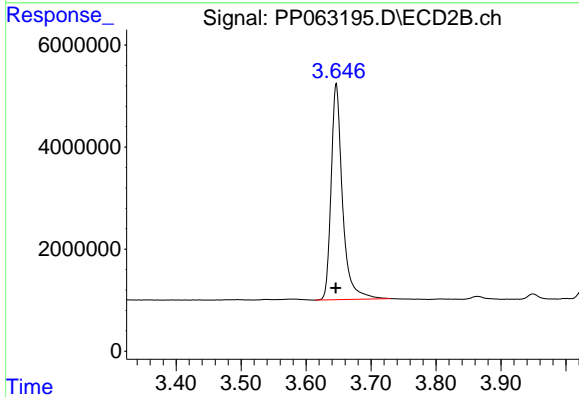
Volume Inj. : 2 µl
Signal #1 Phase : ZB-MR1 Signal #2 Phase: ZB-MR2
Signal #1 Info : 30Mx0.32mmx 0.50µ Signal #2 Info : 30M x 0.32mm x 0.25µm



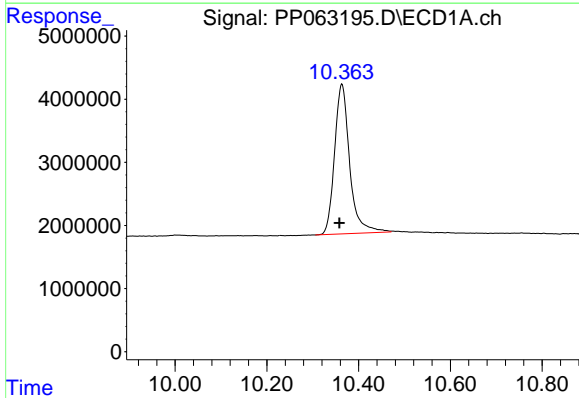


#1 Tetrachloro-m-xylene
R.T.: 4.492 min
Delta R.T.: 0.002 min
Response: 52462718
Conc: 21.93 ng/ml

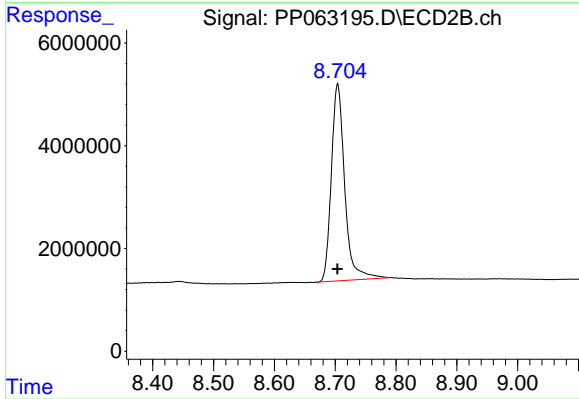
Instrument :
ECD_P
ClientSampleId :
LOD-MDL-SOIL-01-QT1-2024



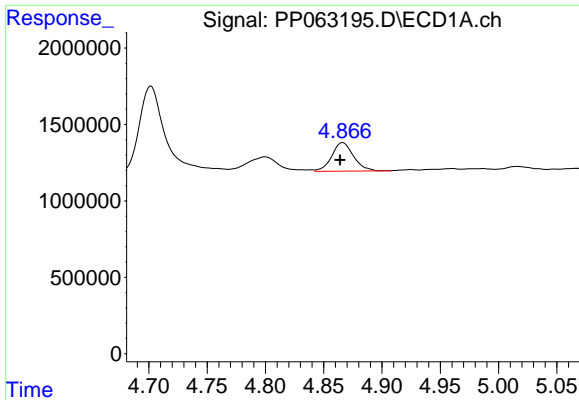
#1 Tetrachloro-m-xylene
R.T.: 3.646 min
Delta R.T.: 0.000 min
Response: 51523595
Conc: 21.68 ng/ml



#2 Decachlorobiphenyl
R.T.: 10.364 min
Delta R.T.: 0.006 min
Response: 54142723
Conc: 24.08 ng/ml



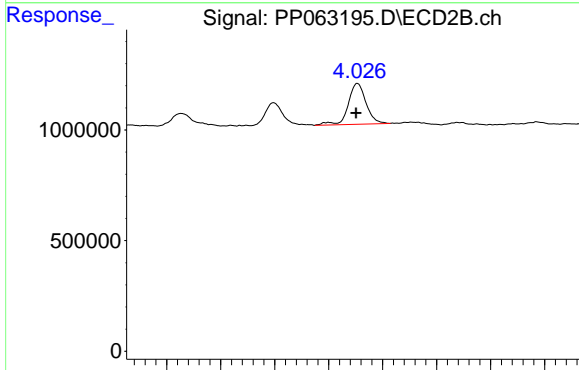
#2 Decachlorobiphenyl
R.T.: 8.704 min
Delta R.T.: 0.000 min
Response: 58646254
Conc: 23.68 ng/ml



#11 AR-1232-1

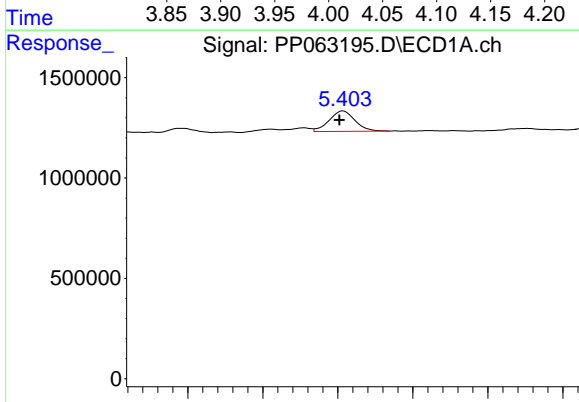
R.T.: 4.866 min
 Delta R.T.: 0.002 min
 Response: 2434047
 Conc: 45.84 ng/ml

Instrument :
 ECD_P
 ClientSampleId :
 LOD-MDL-SOIL-01-QT1-2024



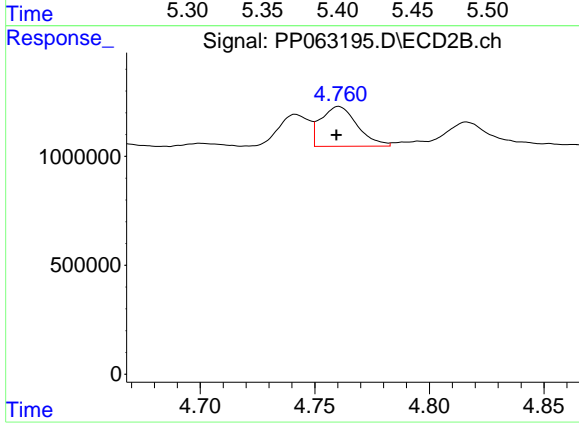
#11 AR-1232-1

R.T.: 4.027 min
 Delta R.T.: 0.001 min
 Response: 2107024
 Conc: 39.20 ng/ml



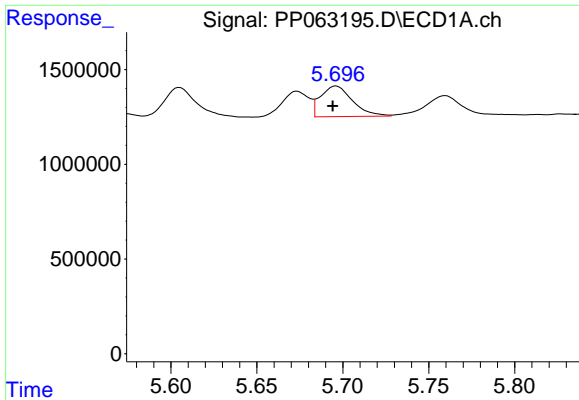
#12 AR-1232-2

R.T.: 5.404 min
 Delta R.T.: 0.003 min
 Response: 1224535
 Conc: 40.48 ng/ml



#12 AR-1232-2

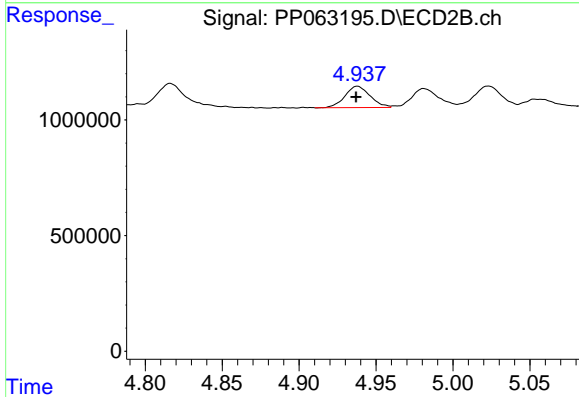
R.T.: 4.761 min
 Delta R.T.: 0.001 min
 Response: 2027749
 Conc: 42.31 ng/ml



#13 AR-1232-3

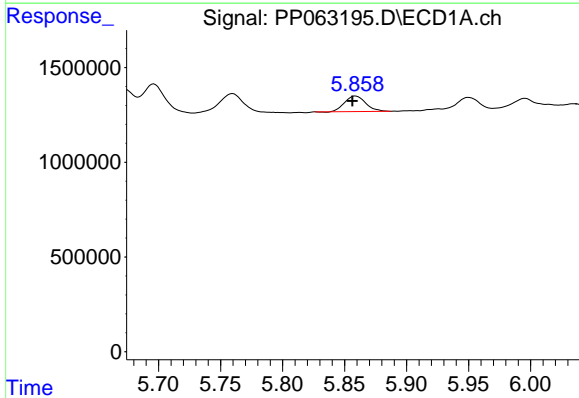
R.T.: 5.696 min
 Delta R.T.: 0.002 min
 Response: 2099862
 Conc: 41.20 ng/ml

Instrument :
 ECD_P
 ClientSampleId :
 LOD-MDL-SOIL-01-QT1-2024



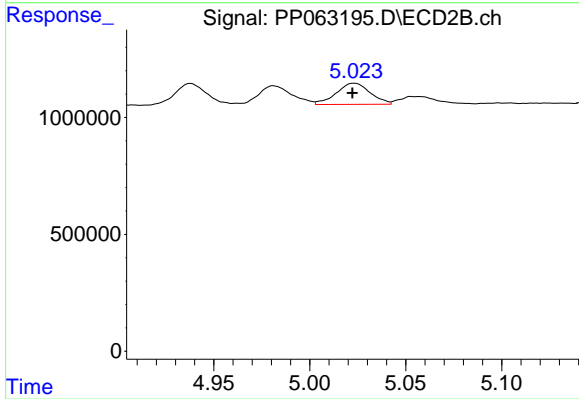
#13 AR-1232-3

R.T.: 4.938 min
 Delta R.T.: 0.000 min
 Response: 1041087
 Conc: 40.08 ng/ml



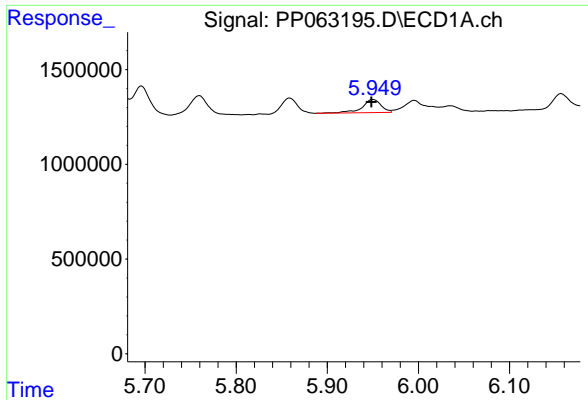
#14 AR-1232-4

R.T.: 5.859 min
 Delta R.T.: 0.002 min
 Response: 975725
 Conc: 37.14 ng/ml



#14 AR-1232-4

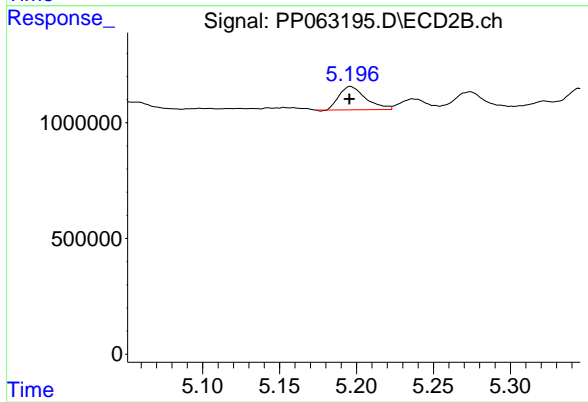
R.T.: 5.023 min
 Delta R.T.: 0.000 min
 Response: 1112771
 Conc: 42.69 ng/ml



#15 AR-1232-5

R.T.: 5.950 min
 Delta R.T.: 0.002 min
 Response: 1005022
 Conc: 43.59 ng/ml

Instrument :
 ECD_P
 ClientSampleId :
 LOD-MDL-SOIL-01-QT1-2024



#15 AR-1232-5

R.T.: 5.196 min
 Delta R.T.: 0.000 min
 Response: 1212999
 Conc: 44.49 ng/ml