

Data Path : Z:\pestpcbsrv\HPCHEM1\ECD\_P\Data\PP020222\  
 Data File : PP043447.D  
 Signal(s) : Signal #1: ECD1A.CH Signal #2: ECD2B.CH  
 Acq On : 02 Feb 2022 17:38  
 Operator : AJ\MA  
 Sample : AR1248ICC1000  
 Misc :  
 ALS Vial : 15 Sample Multiplier: 1

**Instrument :**  
 ECD\_P  
**ClientSampleId :**  
 AR1248ICC1000

Integration File signal 1: autoint1.e  
 Integration File signal 2: autoint2.e  
 Quant Time: Feb 03 08:59:22 2022  
 Quant Method : Z:\pestpcbsrv\HPCHEM1\ECD\_P\methods\PP020222.M  
 Quant Title : GC EXTRACTABLES  
 QLast Update : Thu Feb 03 08:59:06 2022  
 Response via : Initial Calibration  
 Integrator: ChemStation 6890 Scale Mode: Small noise peaks clipped

Volume Inj. : 2 µl  
 Signal #1 Phase : ZB-MR1 Signal #2 Phase: ZB-MR2  
 Signal #1 Info : 30Mx0.32mmx 0.50µ Signal #2 Info : 30M x 0.32mm x 0.25µm

Compound	RT#1	RT#2	Resp#1	Resp#2	ng/ml	ng/ml
-----						
System Monitoring Compounds						
1) SA Tetrachlo...	4.866	4.025	2794754	2287159	95.495	94.530
2) SA Decachlor...	10.779	9.348	1444950	1805199	95.430	94.018
Target Compounds						
21) L5 AR-1248-1	6.168	5.288	443721	434795	948.742	931.501
22) L5 AR-1248-2	6.463	5.553	641429	605070	934.757	920.237
23) L5 AR-1248-3	6.677	5.597	718696	638587	937.309	925.920
24) L5 AR-1248-4	7.101	5.784	710513	762292	940.200	924.304
25) L5 AR-1248-5	7.141	6.208	692674	759237	940.713	934.226
-----						

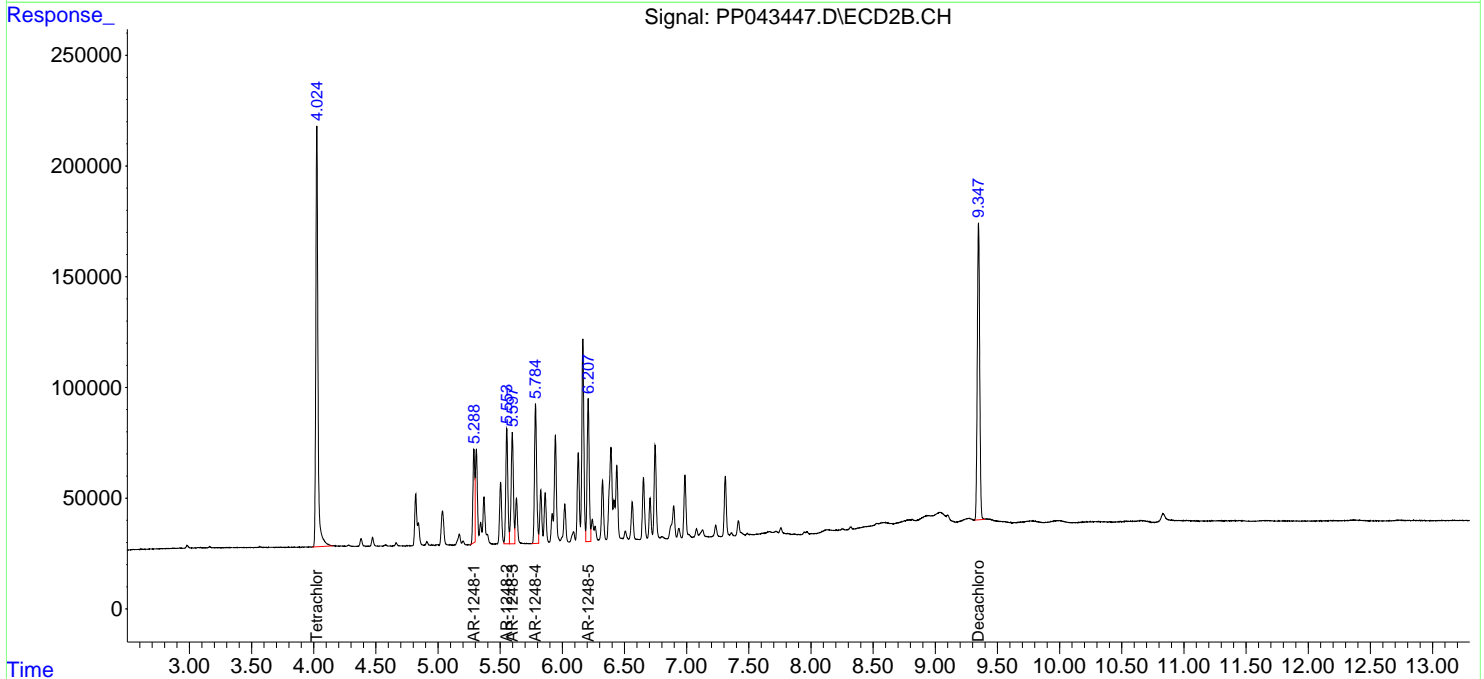
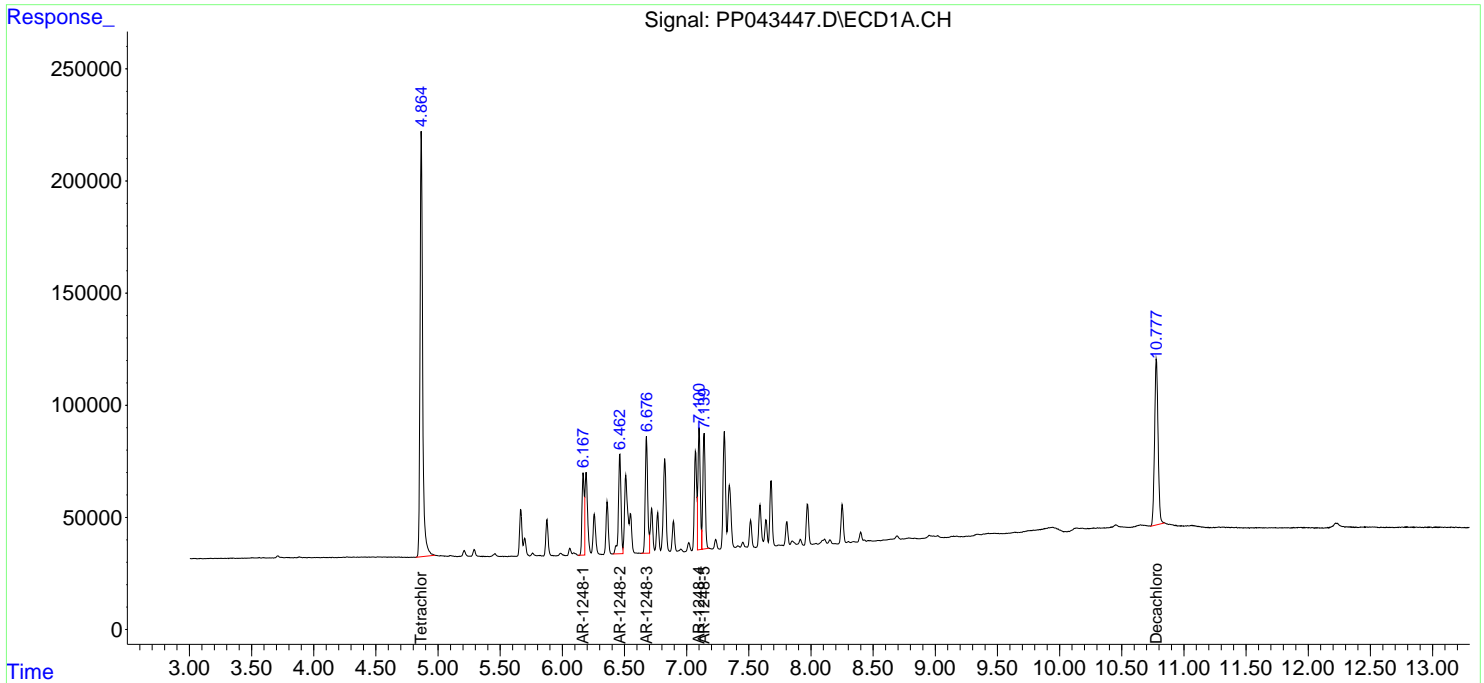
(f)=RT Delta > 1/2 Window (#)=Amounts differ by > 25% (m)=manual int.

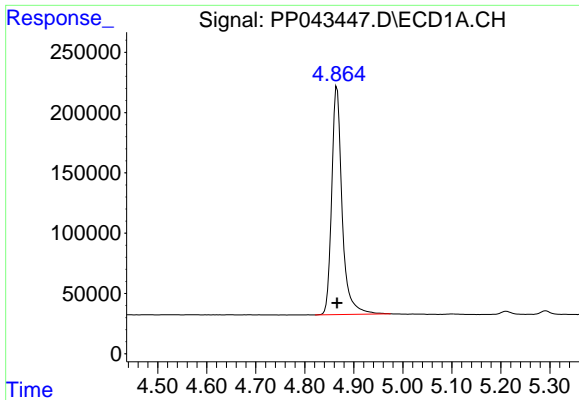
Data Path : Z:\pestpcbsrv\HPCHEM1\ECD\_P\Data\PP020222\  
 Data File : PP043447.D  
 Signal(s) : Signal #1: ECD1A.CH Signal #2: ECD2B.CH  
 Acq On : 02 Feb 2022 17:38  
 Operator : AJ\MA  
 Sample : AR1248ICC1000  
 Misc :  
 ALS Vial : 15 Sample Multiplier: 1

Instrument :  
 ECD\_P  
 ClientSampleId :  
 AR1248ICC1000

Integration File signal 1: autoint1.e  
 Integration File signal 2: autoint2.e  
 Quant Time: Feb 03 08:59:22 2022  
 Quant Method : Z:\pestpcbsrv\HPCHEM1\ECD\_P\methods\PP020222.M  
 Quant Title : GC EXTRACTABLES  
 QLast Update : Thu Feb 03 08:59:06 2022  
 Response via : Initial Calibration  
 Integrator: ChemStation 6890 Scale Mode: Small noise peaks clipped

Volume Inj. : 2 µl  
 Signal #1 Phase : ZB-MR1 Signal #2 Phase: ZB-MR2  
 Signal #1 Info : 30Mx0.32mmx 0.50µ Signal #2 Info : 30M x 0.32mm x 0.25µm

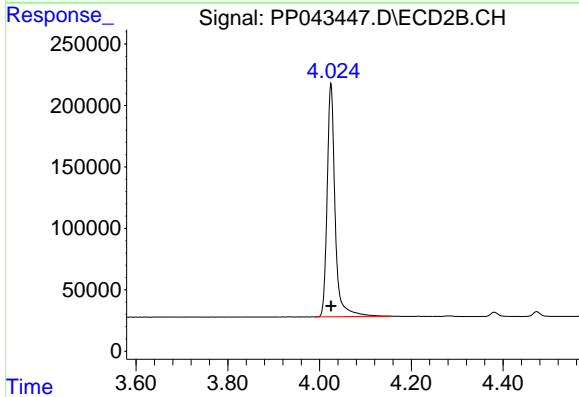




#1 Tetrachloro-m-xylene

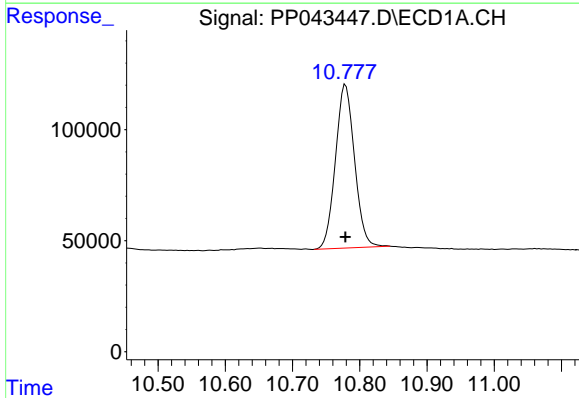
R.T.: 4.866 min  
 Delta R.T.: 0.000 min  
 Response: 2794754  
 Conc: 95.49 ng/ml

Instrument :  
 ECD\_P  
 ClientSampleId :  
 AR1248ICC1000



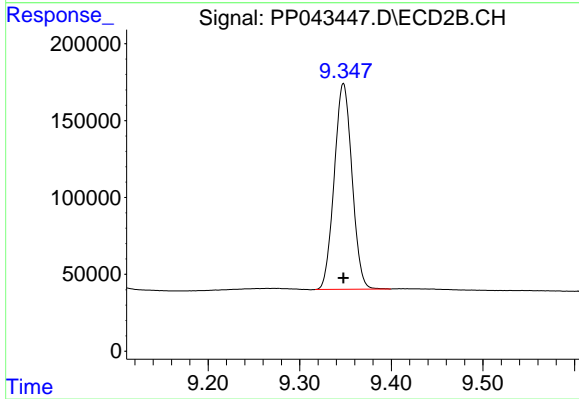
#1 Tetrachloro-m-xylene

R.T.: 4.025 min  
 Delta R.T.: 0.000 min  
 Response: 2287159  
 Conc: 94.53 ng/ml



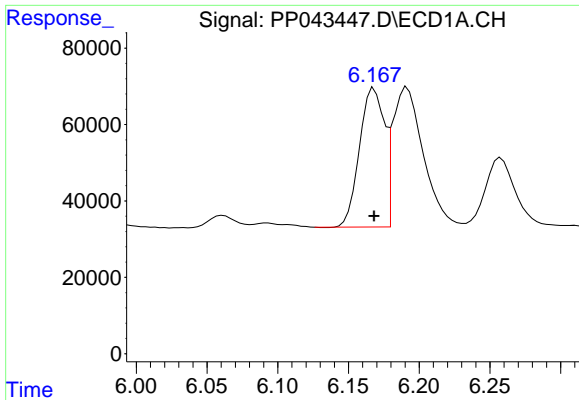
#2 Decachlorobiphenyl

R.T.: 10.779 min  
 Delta R.T.: 0.000 min  
 Response: 1444950  
 Conc: 95.43 ng/ml



#2 Decachlorobiphenyl

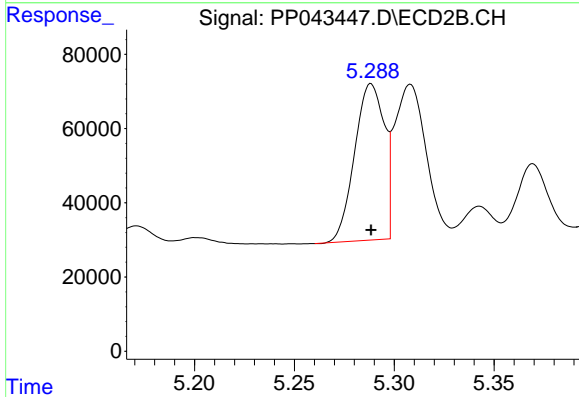
R.T.: 9.348 min  
 Delta R.T.: 0.000 min  
 Response: 1805199  
 Conc: 94.02 ng/ml



#21 AR-1248-1

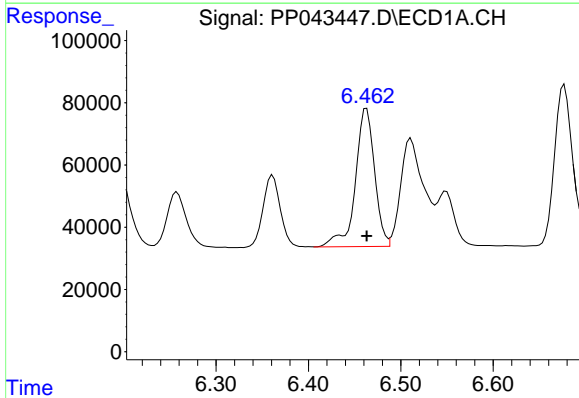
R.T.: 6.168 min  
 Delta R.T.: 0.000 min  
 Response: 443721  
 Conc: 948.74 ng/ml

Instrument :  
 ECD\_P  
 ClientSampleId :  
 AR1248ICC1000



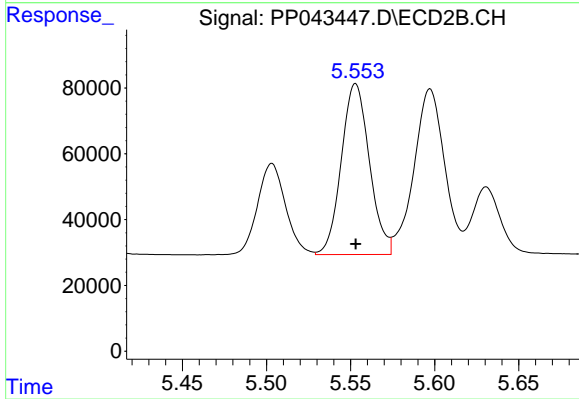
#21 AR-1248-1

R.T.: 5.288 min  
 Delta R.T.: 0.000 min  
 Response: 434795  
 Conc: 931.50 ng/ml



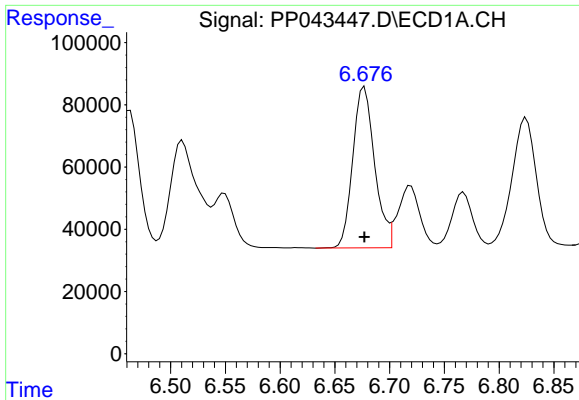
#22 AR-1248-2

R.T.: 6.463 min  
 Delta R.T.: 0.000 min  
 Response: 641429  
 Conc: 934.76 ng/ml



#22 AR-1248-2

R.T.: 5.553 min  
 Delta R.T.: 0.000 min  
 Response: 605070  
 Conc: 920.24 ng/ml

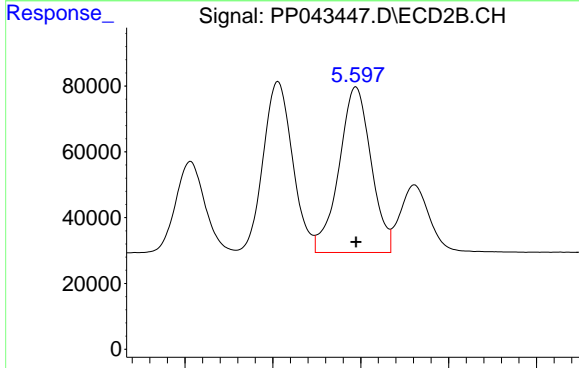


#23 AR-1248-3

R.T.: 6.677 min  
 Delta R.T.: 0.000 min  
 Response: 718696  
 Conc: 937.31 ng/ml

Instrument :  
 ECD\_P  
 ClientSampleId :  
 AR1248ICC1000

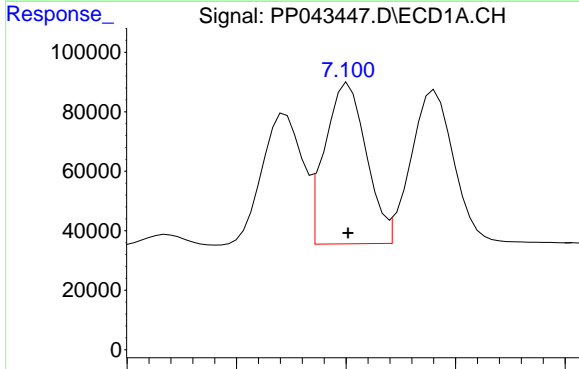
Time 6.50 6.55 6.60 6.65 6.70 6.75 6.80 6.85



#23 AR-1248-3

R.T.: 5.597 min  
 Delta R.T.: 0.000 min  
 Response: 638587  
 Conc: 925.92 ng/ml

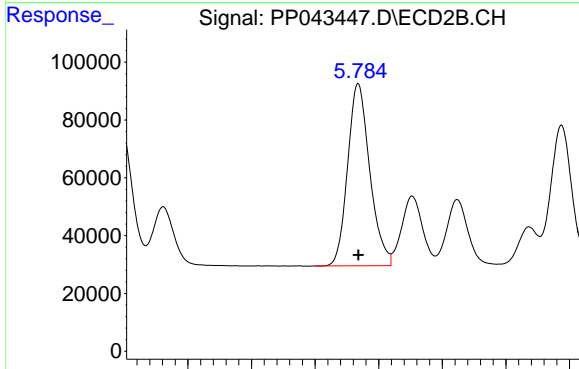
Time 5.50 5.55 5.60 5.65 5.70



#24 AR-1248-4

R.T.: 7.101 min  
 Delta R.T.: 0.000 min  
 Response: 710513  
 Conc: 940.20 ng/ml

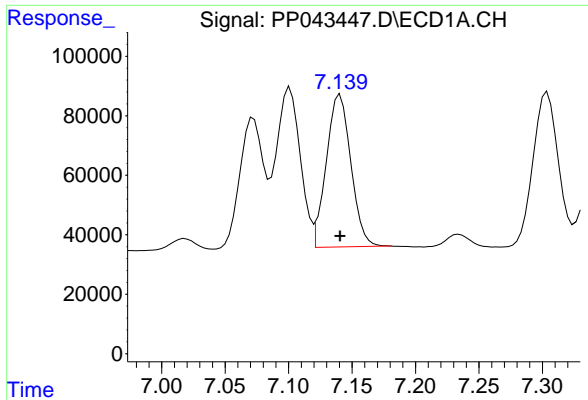
Time 7.00 7.05 7.10 7.15



#24 AR-1248-4

R.T.: 5.784 min  
 Delta R.T.: 0.000 min  
 Response: 762292  
 Conc: 924.30 ng/ml

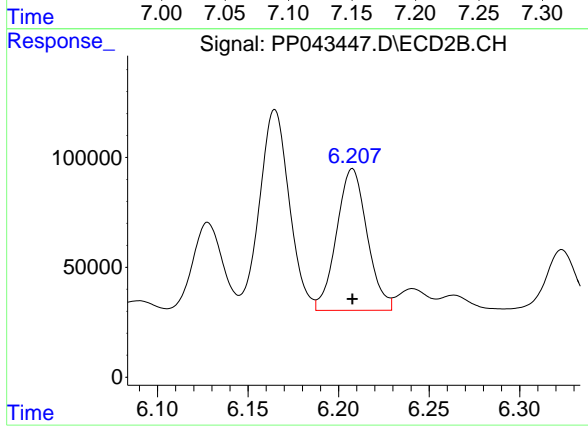
Time 5.65 5.70 5.75 5.80 5.85 5.90



#25 AR-1248-5

R.T.: 7.141 min  
Delta R.T.: 0.000 min  
Response: 692674  
Conc: 940.71 ng/ml

Instrument :  
ECD\_P  
ClientSampleId :  
AR1248ICC1000



#25 AR-1248-5

R.T.: 6.208 min  
Delta R.T.: 0.000 min  
Response: 759237  
Conc: 934.23 ng/ml