

Data Path : Z:\pestpcbsrv\HPCHEM1\ECD_P\Data\PP020222\
 Data File : PP043448.D
 Signal(s) : Signal #1: ECD1A.CH Signal #2: ECD2B.CH
 Acq On : 02 Feb 2022 17:54
 Operator : AJ\MA
 Sample : AR1248ICC750
 Misc :
 ALS Vial : 16 Sample Multiplier: 1

Instrument :
 ECD_P
ClientSampleId :
 AR1248ICC750

Integration File signal 1: autoint1.e
 Integration File signal 2: autoint2.e
 Quant Time: Feb 03 09:02:16 2022
 Quant Method : Z:\pestpcbsrv\HPCHEM1\ECD_P\methods\PP020222.M
 Quant Title : GC EXTRACTABLES
 QLast Update : Thu Feb 03 09:02:03 2022
 Response via : Initial Calibration
 Integrator: ChemStation 6890 Scale Mode: Small noise peaks clipped

Volume Inj. : 2 µl
 Signal #1 Phase : ZB-MR1 Signal #2 Phase: ZB-MR2
 Signal #1 Info : 30Mx0.32mmx 0.50µ Signal #2 Info : 30M x 0.32mm x 0.25µm

Compound	RT#1	RT#2	Resp#1	Resp#2	ng/ml	ng/ml

System Monitoring Compounds						
1) SA Tetrachlo...	4.865	4.024	2316595	1901936	77.721	77.368
2) SA Decachlor...	10.779	9.347	1163004	1467196	76.197	75.937
Target Compounds						
21) L5 AR-1248-1	6.168	5.287	369468	367571	776.187	774.578
22) L5 AR-1248-2	6.462	5.553	511039	513731	746.484	770.594
23) L5 AR-1248-3	6.676	5.597	602854	540069	773.770	771.730
24) L5 AR-1248-4	7.100	5.783	594599	648034	774.148	773.469
25) L5 AR-1248-5	7.140	6.207	582859	636892	777.213	772.124

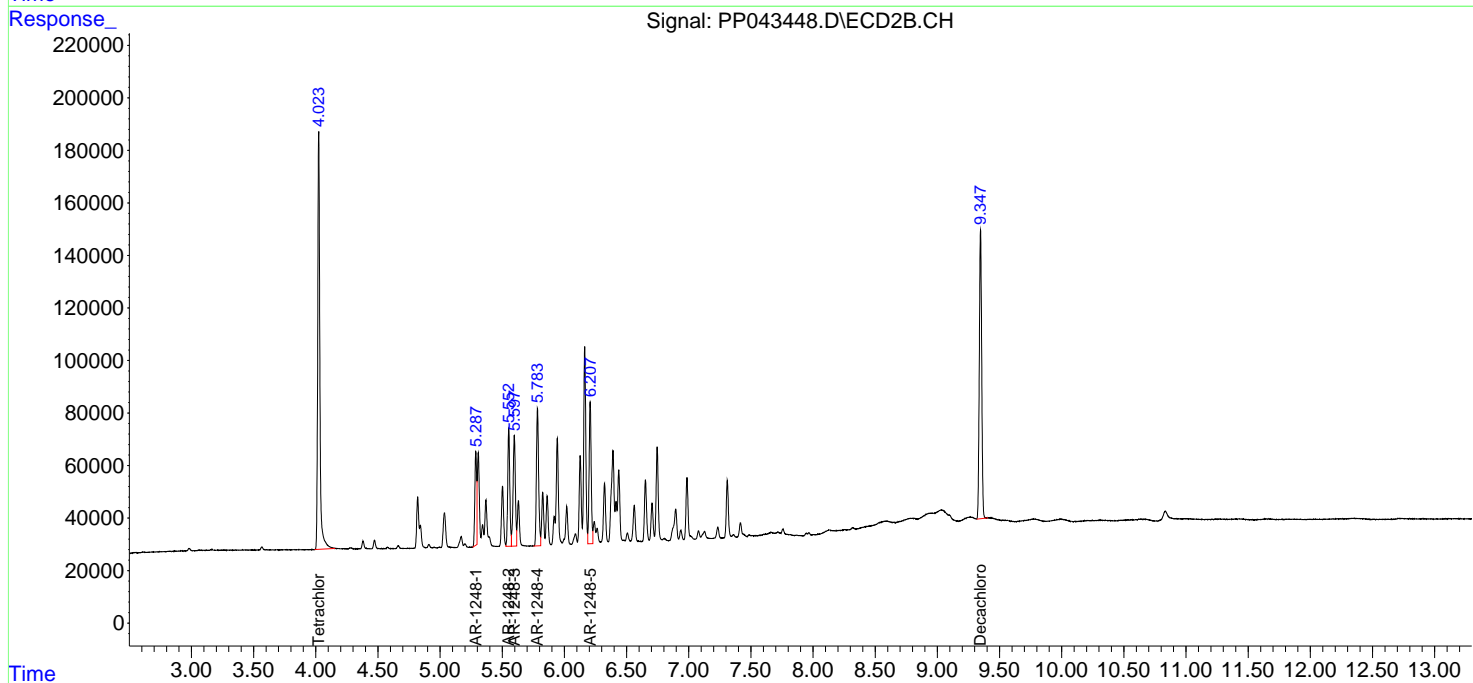
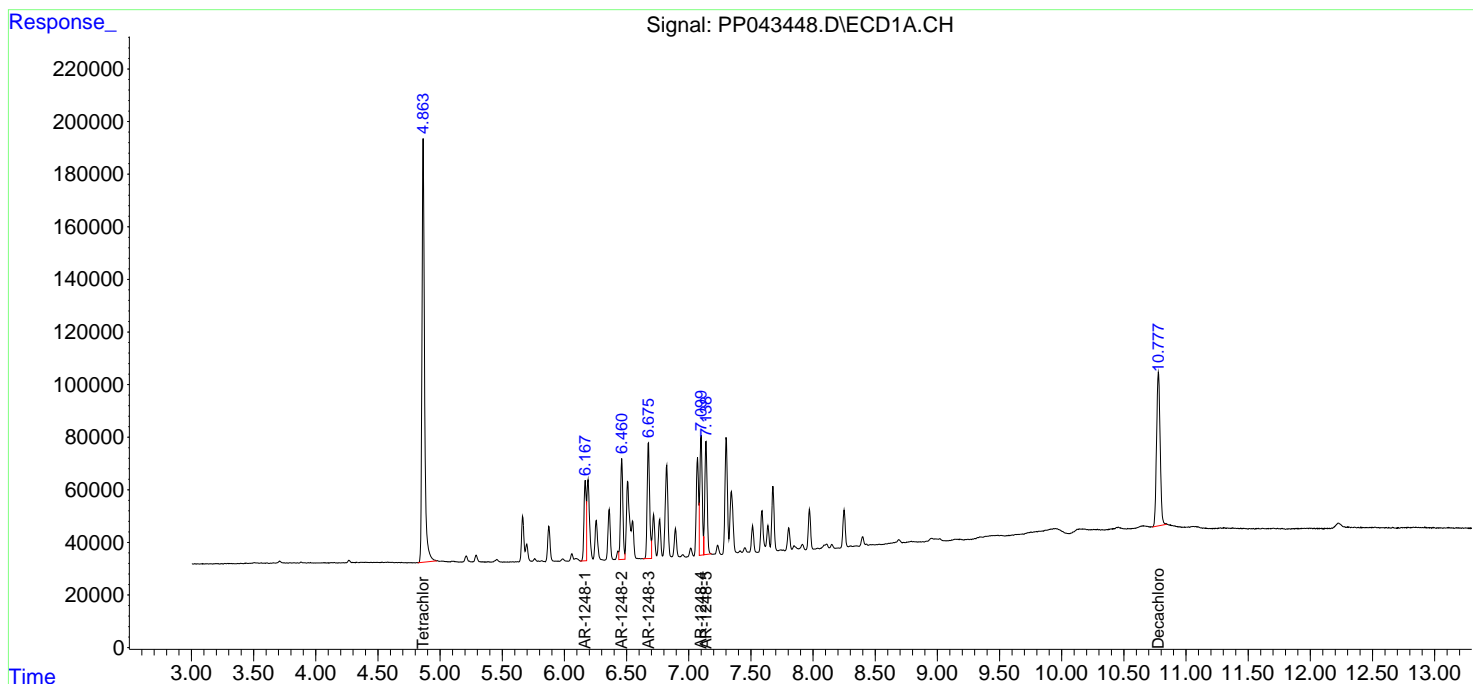
(f)=RT Delta > 1/2 Window (#)=Amounts differ by > 25% (m)=manual int.

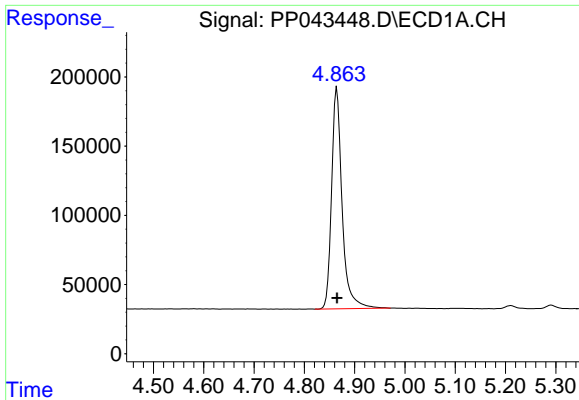
Data Path : Z:\pestpcbsrv\HPCHEM1\ECD_P\Data\PP020222\
 Data File : PP043448.D
 Signal(s) : Signal #1: ECD1A.CH Signal #2: ECD2B.CH
 Acq On : 02 Feb 2022 17:54
 Operator : AJ\MA
 Sample : AR1248ICC750
 Misc :
 ALS Vial : 16 Sample Multiplier: 1

Instrument :
 ECD_P
 ClientSampleId :
 AR1248ICC750

Integration File signal 1: autoint1.e
 Integration File signal 2: autoint2.e
 Quant Time: Feb 03 09:02:16 2022
 Quant Method : Z:\pestpcbsrv\HPCHEM1\ECD_P\methods\PP020222.M
 Quant Title : GC EXTRACTABLES
 QLast Update : Thu Feb 03 09:02:03 2022
 Response via : Initial Calibration
 Integrator: ChemStation 6890 Scale Mode: Small noise peaks clipped

Volume Inj. : 2 µl
 Signal #1 Phase : ZB-MR1 Signal #2 Phase: ZB-MR2
 Signal #1 Info : 30Mx0.32mmx 0.50µ Signal #2 Info : 30M x 0.32mm x 0.25µm

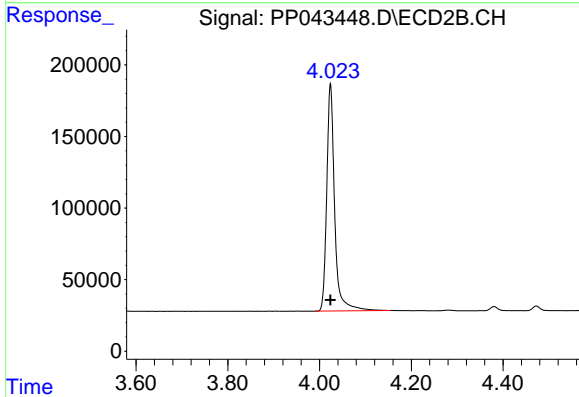




#1 Tetrachloro-m-xylene

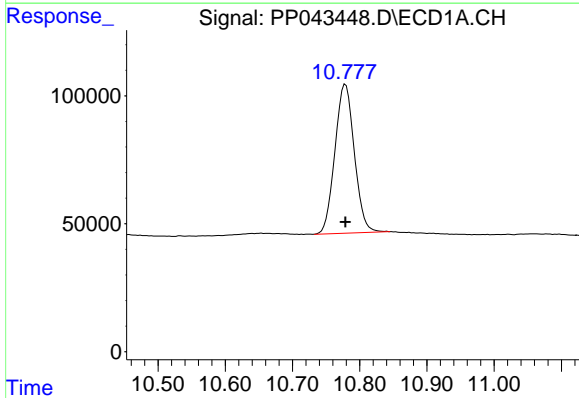
R.T.: 4.865 min
 Delta R.T.: 0.000 min
 Response: 2316595
 Conc: 77.72 ng/ml

Instrument :
 ECD_P
 ClientSampleId :
 AR1248ICC750



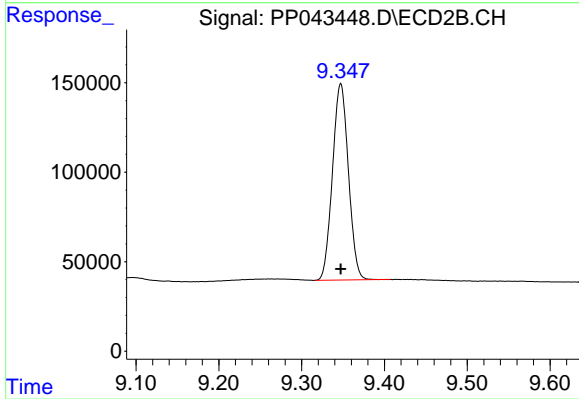
#1 Tetrachloro-m-xylene

R.T.: 4.024 min
 Delta R.T.: 0.000 min
 Response: 1901936
 Conc: 77.37 ng/ml



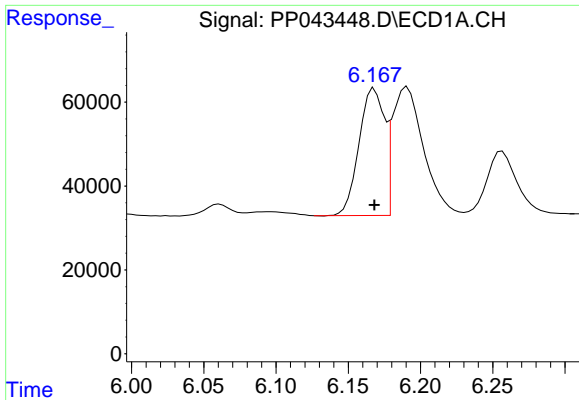
#2 Decachlorobiphenyl

R.T.: 10.779 min
 Delta R.T.: 0.000 min
 Response: 1163004
 Conc: 76.20 ng/ml



#2 Decachlorobiphenyl

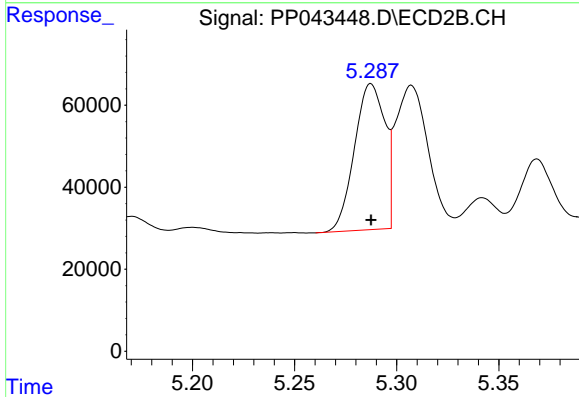
R.T.: 9.347 min
 Delta R.T.: 0.000 min
 Response: 1467196
 Conc: 75.94 ng/ml



#21 AR-1248-1

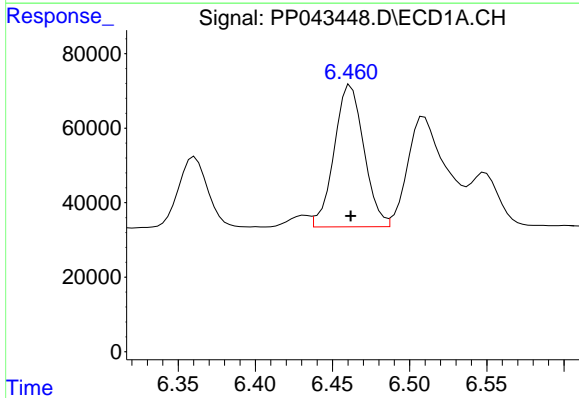
R.T.: 6.168 min
 Delta R.T.: 0.000 min
 Response: 369468
 Conc: 776.19 ng/ml

Instrument :
 ECD_P
 ClientSampleId :
 AR1248ICC750



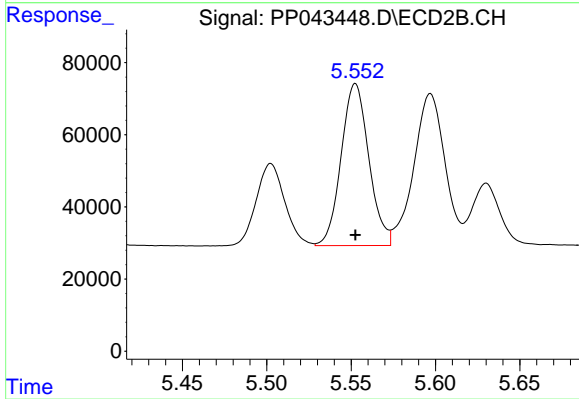
#21 AR-1248-1

R.T.: 5.287 min
 Delta R.T.: 0.000 min
 Response: 367571
 Conc: 774.58 ng/ml



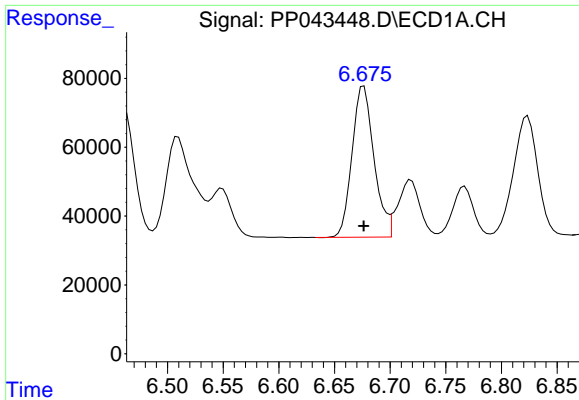
#22 AR-1248-2

R.T.: 6.462 min
 Delta R.T.: 0.000 min
 Response: 511039
 Conc: 746.48 ng/ml



#22 AR-1248-2

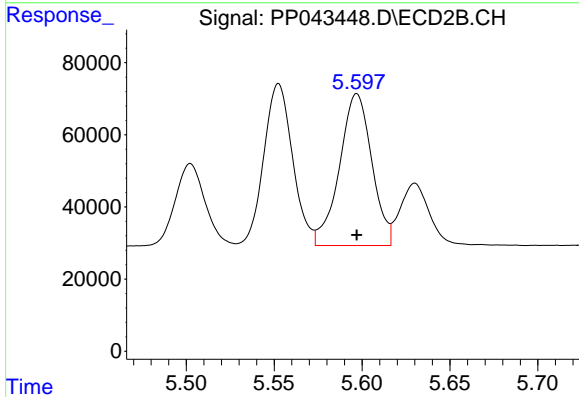
R.T.: 5.553 min
 Delta R.T.: 0.000 min
 Response: 513731
 Conc: 770.59 ng/ml



#23 AR-1248-3

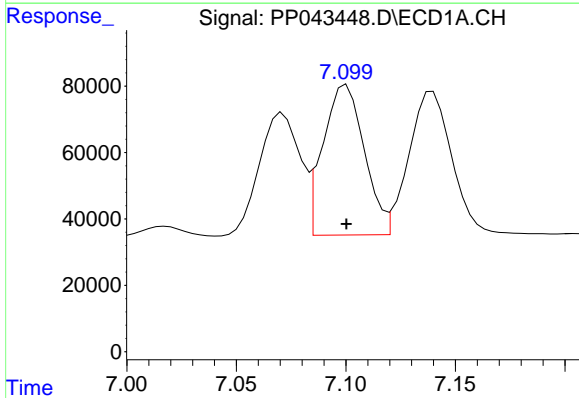
R.T.: 6.676 min
 Delta R.T.: 0.000 min
 Response: 602854
 Conc: 773.77 ng/ml

Instrument :
 ECD_P
 ClientSampleId :
 AR1248ICC750



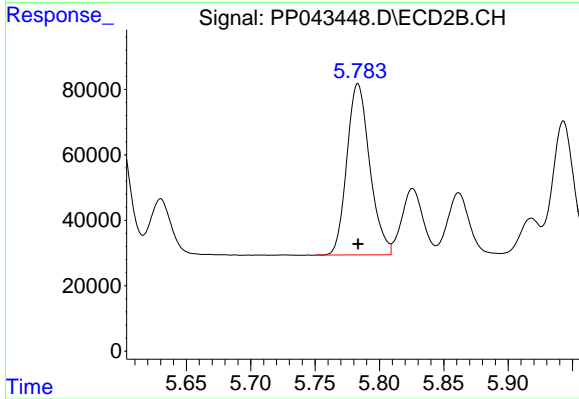
#23 AR-1248-3

R.T.: 5.597 min
 Delta R.T.: 0.000 min
 Response: 540069
 Conc: 771.73 ng/ml



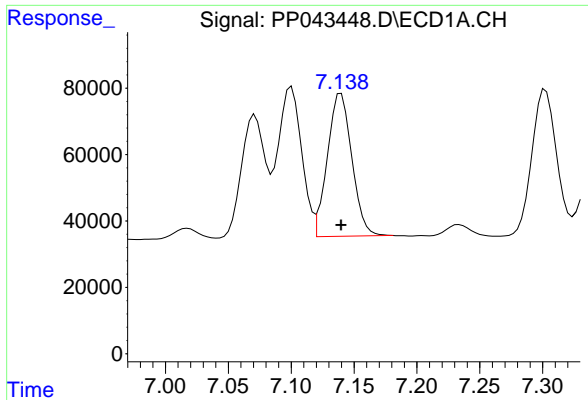
#24 AR-1248-4

R.T.: 7.100 min
 Delta R.T.: 0.000 min
 Response: 594599
 Conc: 774.15 ng/ml



#24 AR-1248-4

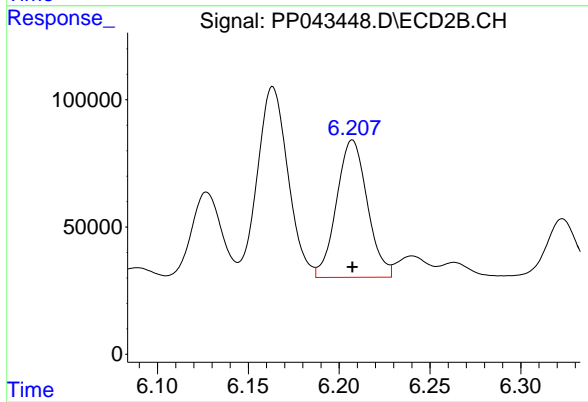
R.T.: 5.783 min
 Delta R.T.: 0.000 min
 Response: 648034
 Conc: 773.47 ng/ml



#25 AR-1248-5

R.T.: 7.140 min
 Delta R.T.: 0.000 min
 Response: 582859
 Conc: 777.21 ng/ml

Instrument :
 ECD_P
 ClientSampleId :
 AR1248ICC750



#25 AR-1248-5

R.T.: 6.207 min
 Delta R.T.: 0.000 min
 Response: 636892
 Conc: 772.12 ng/ml