

Data Path : Z:\pestpcbsrv\HPCHEM1\ECD\_P\Data\PP020222\  
 Data File : PP043457.D  
 Signal(s) : Signal #1: ECD1A.CH Signal #2: ECD2B.CH  
 Acq On : 02 Feb 2022 20:24  
 Operator : AJ\MA  
 Sample : AR1262ICC500  
 Misc :  
 ALS Vial : 25 Sample Multiplier: 1

**Instrument :**  
 ECD\_P  
**ClientSampleId :**  
 AR1262ICC500

**Manual Integrations**  
**APPROVED**  
 Reviewed By :Yogesh Patel 02/03/2022  
 Supervised By :Ankita Jodhani 02/03/2022

Integration File signal 1: autoint1.e  
 Integration File signal 2: autoint2.e  
 Quant Time: Feb 03 09:44:39 2022  
 Quant Method : Z:\pestpcbsrv\HPCHEM1\ECD\_P\methods\PP020222.M  
 Quant Title : GC EXTRACTABLES  
 QLast Update : Thu Feb 03 09:38:06 2022  
 Response via : Initial Calibration  
 Integrator: ChemStation 6890 Scale Mode: Small noise peaks clipped

Volume Inj. : 2 µl  
 Signal #1 Phase : ZB-MR1 Signal #2 Phase: ZB-MR2  
 Signal #1 Info : 30Mx0.32mmx 0.50µ Signal #2 Info : 30M x 0.32mm x 0.25µm

Compound	RT#1	RT#2	Resp#1	Resp#2	ng/ml	ng/ml
-----						
System Monitoring Compounds						
1) SA Tetrachlo...	4.866	4.025	1378777	1140300	50.000	50.000
2) SA Decachlor...	10.782	9.348	724338	938655	50.000	50.000
Target Compounds						
36) L8 AR-1262-1	8.479	7.416	541003	388984	500.000	500.000
37) L8 AR-1262-2	9.022	7.720	849849	670808	500.000	500.000
38) L8 AR-1262-3	9.331	8.254	604672	474597	500.000	500.000
39) L8 AR-1262-4	9.415	8.320	263447	924984	500.928m	500.000
40) L8 AR-1262-5	10.055	8.819	277084	430226	500.000	500.000
-----						

(f)=RT Delta > 1/2 Window (#)=Amounts differ by > 25% (m)=manual int.

Data Path : Z:\pestpcbsrv\HPCHEM1\ECD\_P\Data\PP020222\  
 Data File : PP043457.D  
 Signal(s) : Signal #1: ECD1A.CH Signal #2: ECD2B.CH  
 Acq On : 02 Feb 2022 20:24  
 Operator : AJ\MA  
 Sample : AR1262ICC500  
 Misc :  
 ALS Vial : 25 Sample Multiplier: 1

**Instrument :**

ECD\_P

**ClientSampleId :**

AR1262ICC500

**Manual Integrations**

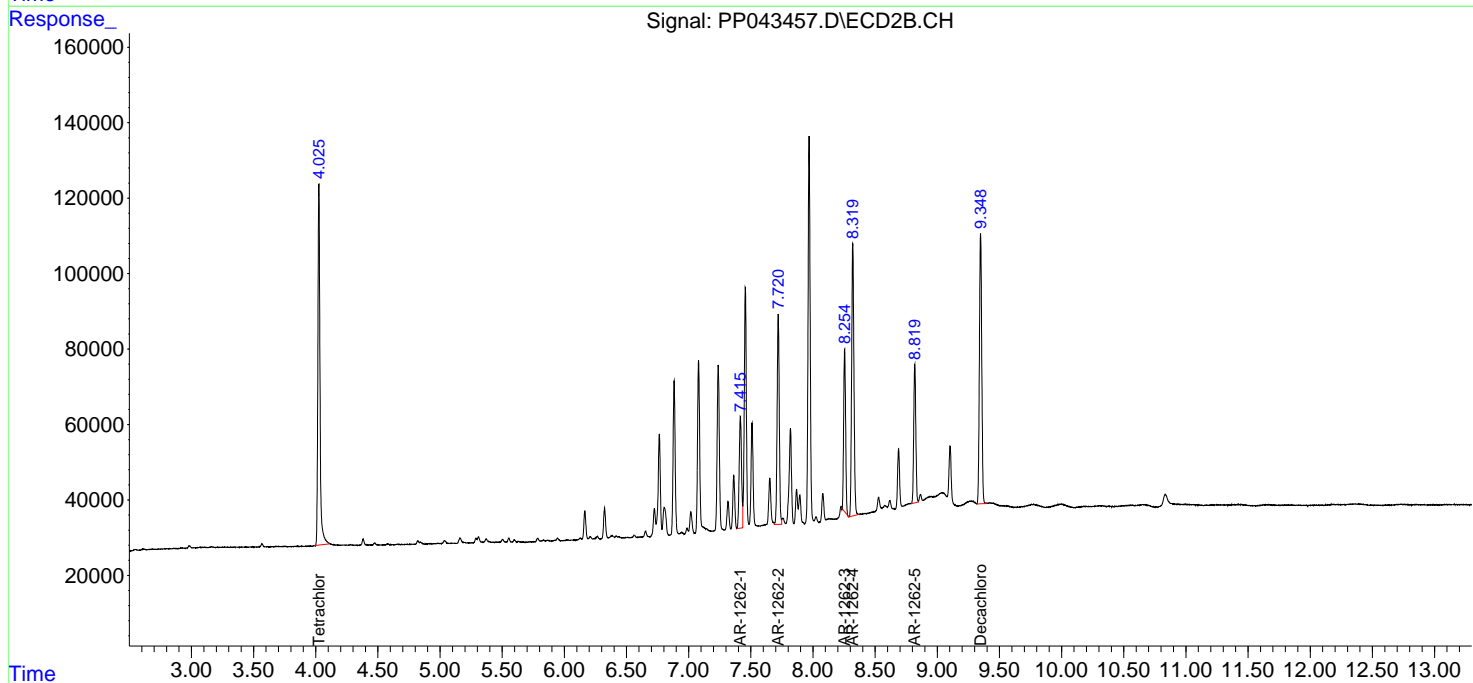
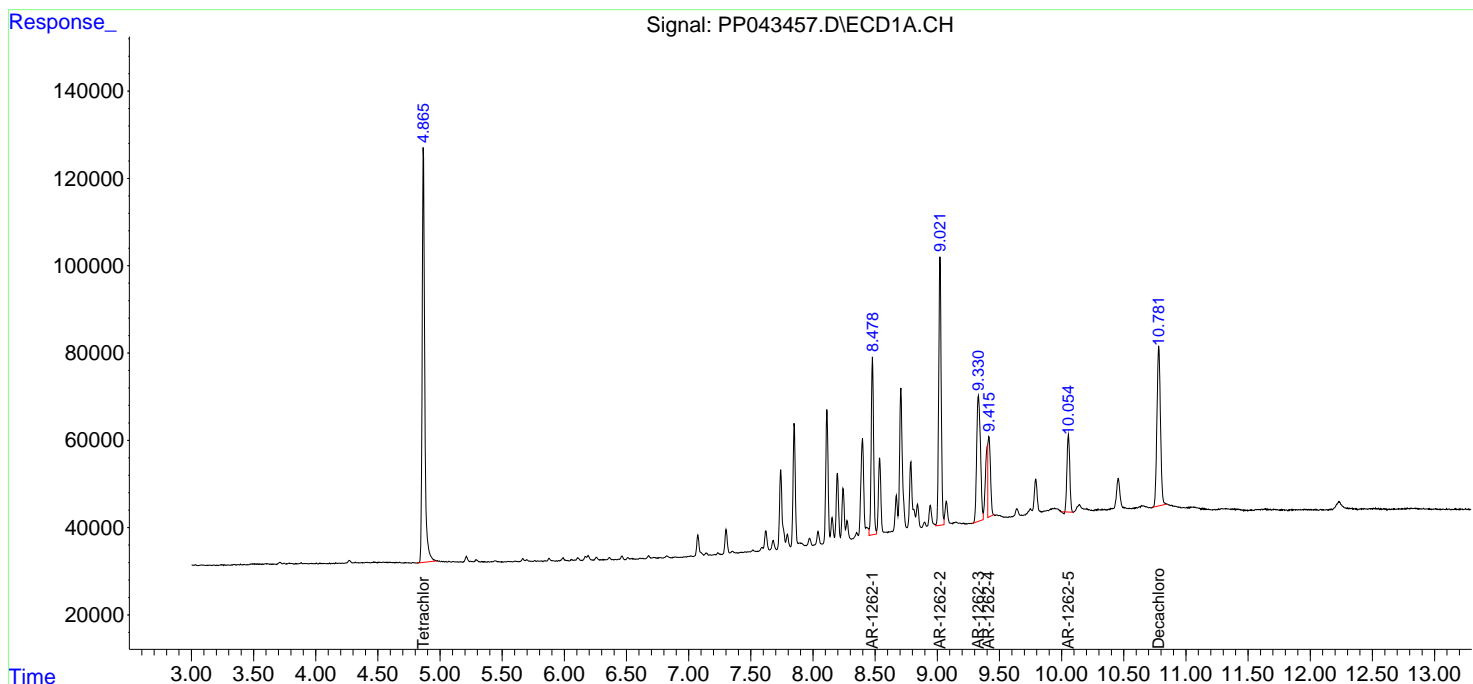
**APPROVED**

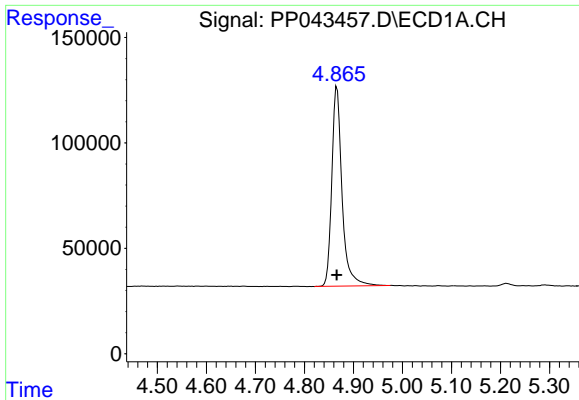
Reviewed By :Yogesh Patel 02/03/2022

Supervised By :Ankita Jodhani 02/03/2022

Integration File signal 1: autoint1.e  
 Integration File signal 2: autoint2.e  
 Quant Time: Feb 03 09:44:39 2022  
 Quant Method : Z:\pestpcbsrv\HPCHEM1\ECD\_P\methods\PP020222.M  
 Quant Title : GC EXTRACTABLES  
 QLast Update : Thu Feb 03 09:38:06 2022  
 Response via : Initial Calibration  
 Integrator: ChemStation 6890 Scale Mode: Small noise peaks clipped

Volume Inj. : 2 µl  
 Signal #1 Phase : ZB-MR1 Signal #2 Phase: ZB-MR2  
 Signal #1 Info : 30Mx0.32mmx 0.50µ Signal #2 Info : 30M x 0.32mm x 0.25µm





#1 Tetrachloro-m-xylene  
 R.T.: 4.866 min  
 Delta R.T.: 0.000 min  
 Response: 1378777  
 Conc: 50.00 ng/ml

Instrument :

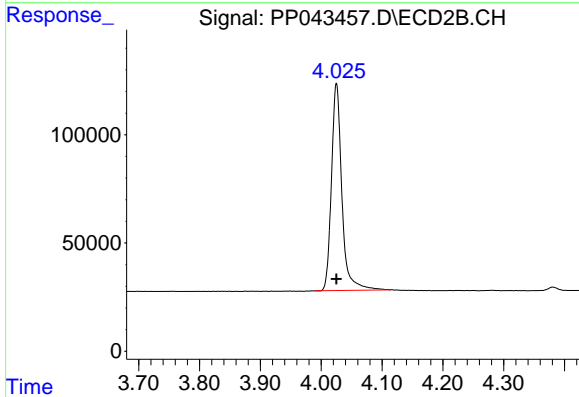
ECD\_P

ClientSampleId :

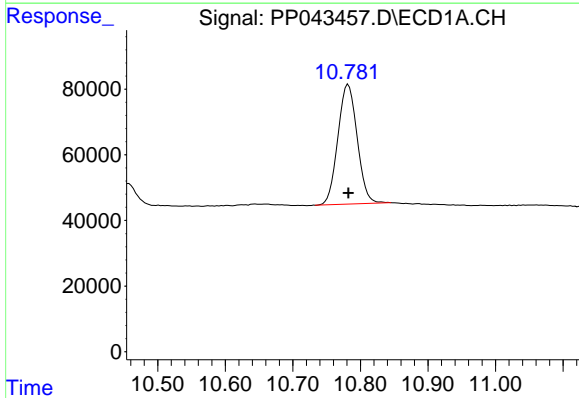
AR1262ICC500

Manual Integrations  
 APPROVED

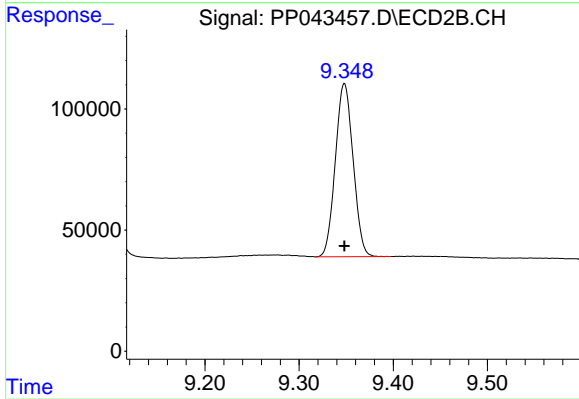
Reviewed By :Yogesh Patel 02/03/2022  
 Supervised By :Ankita Jodhani 02/03/2022



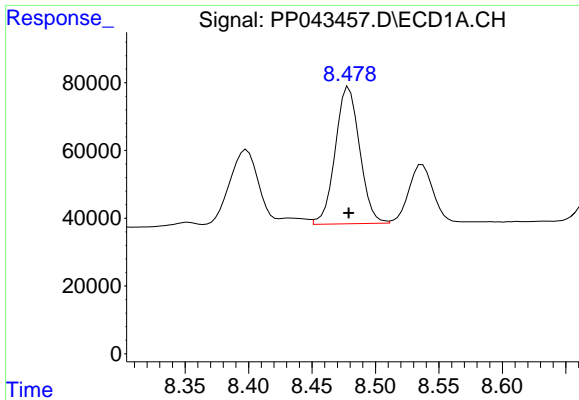
#1 Tetrachloro-m-xylene  
 R.T.: 4.025 min  
 Delta R.T.: 0.000 min  
 Response: 1140300  
 Conc: 50.00 ng/ml



#2 Decachlorobiphenyl  
 R.T.: 10.782 min  
 Delta R.T.: 0.000 min  
 Response: 724338  
 Conc: 50.00 ng/ml



#2 Decachlorobiphenyl  
 R.T.: 9.348 min  
 Delta R.T.: 0.000 min  
 Response: 938655  
 Conc: 50.00 ng/ml



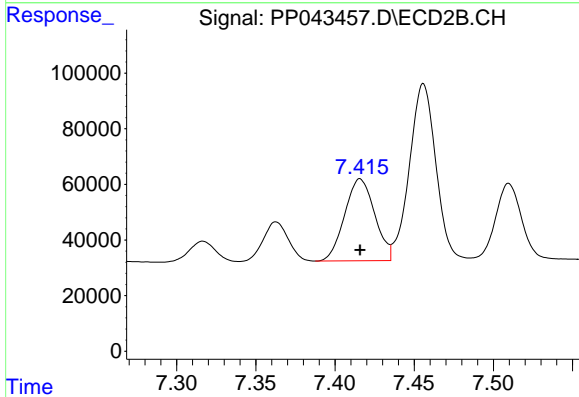
#36 AR-1262-1

R.T.: 8.479 min  
 Delta R.T.: 0.000 min  
 Response: 541003  
 Conc: 500.00 ng/ml

Instrument :  
 ECD\_P  
 ClientSampleId :  
 AR1262ICC500

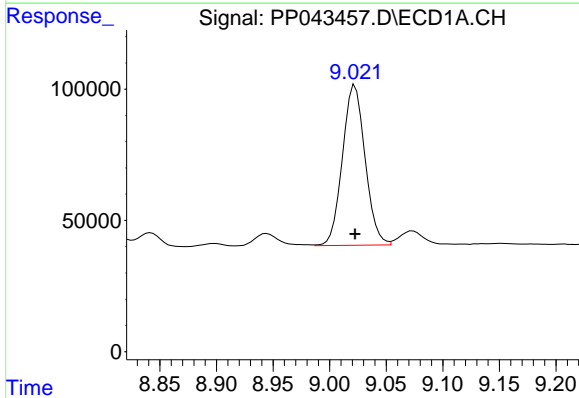
Manual Integrations  
 APPROVED

Reviewed By :Yogesh Patel 02/03/2022  
 Supervised By :Ankita Jodhani 02/03/2022



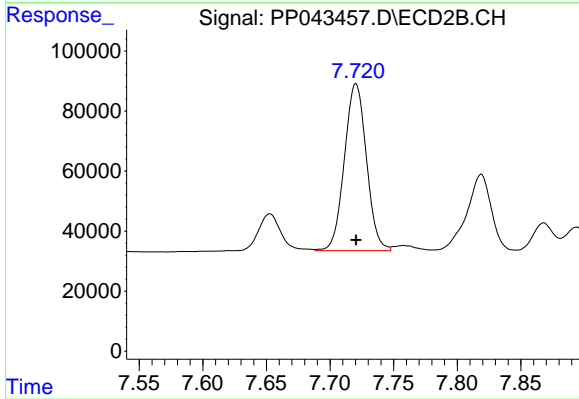
#36 AR-1262-1

R.T.: 7.416 min  
 Delta R.T.: 0.000 min  
 Response: 388984  
 Conc: 500.00 ng/ml



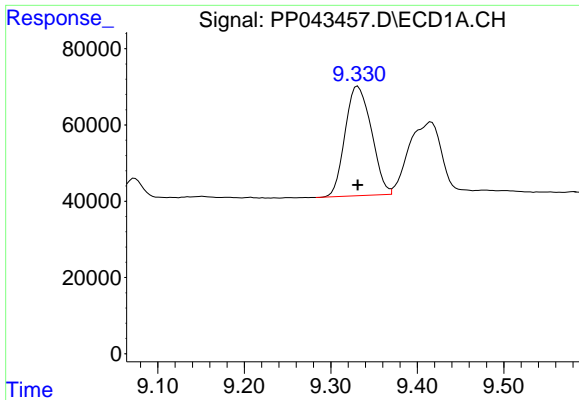
#37 AR-1262-2

R.T.: 9.022 min  
 Delta R.T.: 0.000 min  
 Response: 849849  
 Conc: 500.00 ng/ml



#37 AR-1262-2

R.T.: 7.720 min  
 Delta R.T.: 0.000 min  
 Response: 670808  
 Conc: 500.00 ng/ml



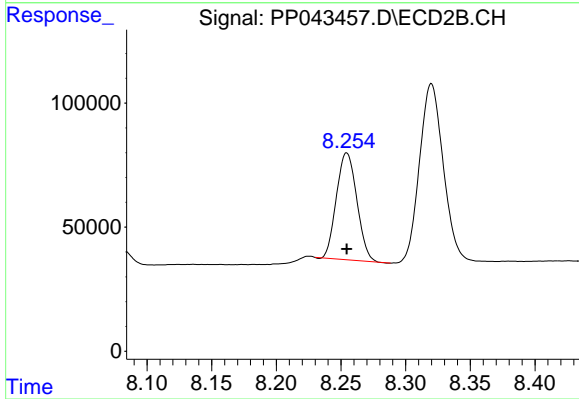
#38 AR-1262-3

R.T.: 9.331 min  
 Delta R.T.: 0.000 min  
 Response: 604672  
 Conc: 500.00 ng/ml

Instrument :  
 ECD\_P  
 ClientSampleId :  
 AR1262ICC500

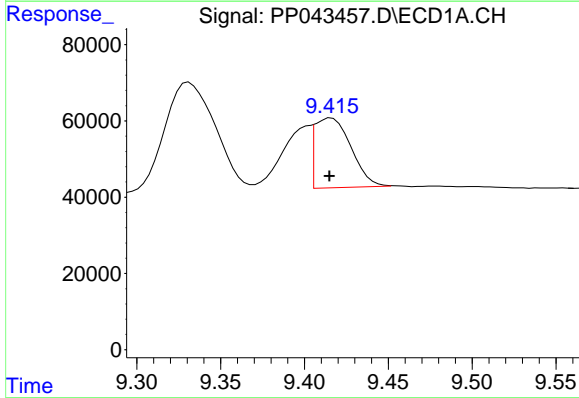
Manual Integrations  
 APPROVED

Reviewed By :Yogesh Patel 02/03/2022  
 Supervised By :Ankita Jodhani 02/03/2022



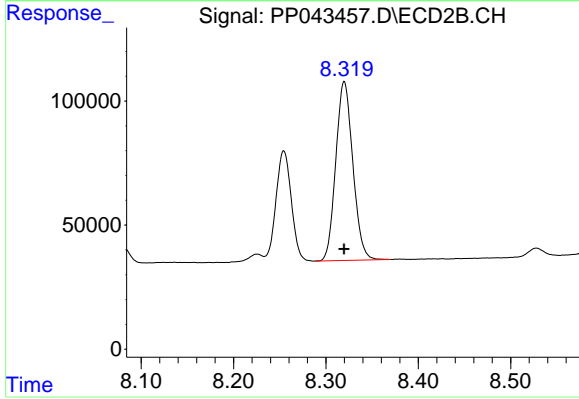
#38 AR-1262-3

R.T.: 8.254 min  
 Delta R.T.: 0.000 min  
 Response: 474597  
 Conc: 500.00 ng/ml



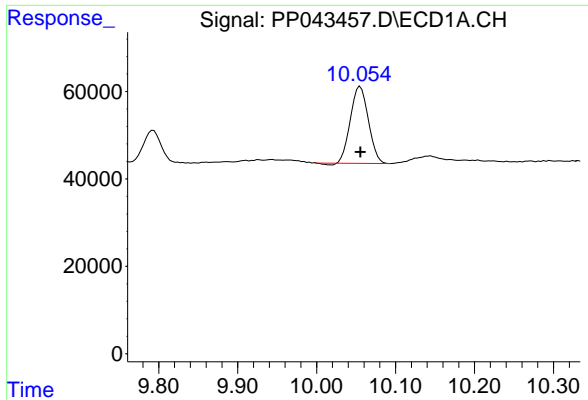
#39 AR-1262-4

R.T.: 9.415 min  
 Delta R.T.: 0.000 min  
 Response: 263447  
 Conc: 500.93 ng/ml m



#39 AR-1262-4

R.T.: 8.320 min  
 Delta R.T.: 0.000 min  
 Response: 924984  
 Conc: 500.00 ng/ml



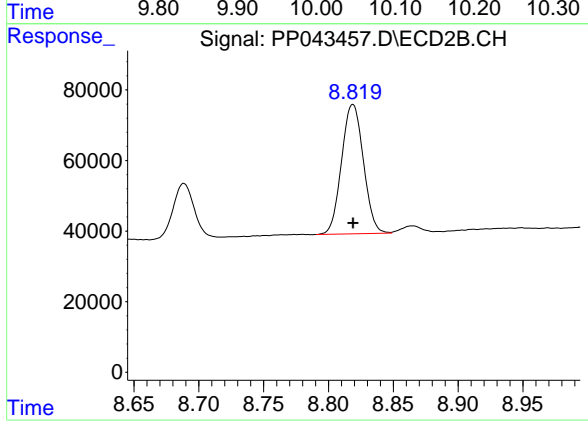
#40 AR-1262-5

R.T.: 10.055 min  
 Delta R.T.: 0.000 min  
 Response: 277084  
 Conc: 500.00 ng/ml

Instrument :  
 ECD\_P  
 ClientSampleId :  
 AR1262ICC500

Manual Integrations  
 APPROVED

Reviewed By :Yogesh Patel 02/03/2022  
 Supervised By :Ankita Jodhani 02/03/2022



#40 AR-1262-5

R.T.: 8.819 min  
 Delta R.T.: 0.000 min  
 Response: 430226  
 Conc: 500.00 ng/ml