

Data Path : Z:\pestpcbsrv\HPCHEM1\ECD_P\Data\PP020223\
 Data File : PP055237.D
 Signal(s) : Signal #1: ECD1A.ch Signal #2: ECD2B.ch
 Acq On : 02 Feb 2023 08:57
 Operator : YP\AJ
 Sample : AR1660CCC500
 Misc :
 ALS Vial : 3 Sample Multiplier: 1

Instrument :
 ECD_P
 ClientSampleId :

Integration File signal 1: autoint1.e
 Integration File signal 2: autoint2.e
 Quant Time: Feb 02 20:58:33 2023
 Quant Method : Z:\pestpcbsrv\HPCHEM1\ECD_P\methods\PP012423.M
 Quant Title : GC EXTRACTABLES
 QLast Update : Tue Jan 24 03:37:45 2023
 Response via : Initial Calibration
 Integrator: ChemStation

Volume Inj. : 2 µl
 Signal #1 Phase : ZB-MR1 Signal #2 Phase: ZB-MR2
 Signal #1 Info : 30Mx0.32mmx 0.50µ Signal #2 Info : 30M x 0.32mm x 0.25µm

Compound	RT#1	RT#2	Resp#1	Resp#2	ng/ml	ng/ml

System Monitoring Compounds						
1) SA Tetrachlo...	4.330	3.575	86551140	75527291	49.779	50.311
2) SA Decachlor...	10.086	8.586	93344267	71417934	53.904	52.880
Target Compounds						
3) L1 AR-1016-1	5.501	4.658	32186403	25097020	478.892	507.072
4) L1 AR-1016-2	5.524	4.676	46207382	36074646	482.185	521.166
5) L1 AR-1016-3	5.586	4.853	28889171	19993706	482.964	537.514
6) L1 AR-1016-4	5.685	4.895	23087453	16345777	481.811	520.197
7) L1 AR-1016-5	5.981	5.108	24030913	20593505	474.225	503.699
8) L2 AR-1221-1	4.534	3.786	3073716	2817386	130.713	142.099
9) L2 AR-1221-2	4.626	3.873	4708382	3953809	265.007	266.746
10) L2 AR-1221-3	4.701	3.948	17826905	15107046	331.296	334.860
11) L3 AR-1232-1	4.701	3.948	17826905	15107046	401.662	409.856
12) L3 AR-1232-2	5.232	4.676	23470991	36074646	1037.860	1129.361
13) L3 AR-1232-3	5.524	4.853	46207382	19993706	1052.146	1199.312
14) L3 AR-1232-4	5.685	4.937	23087453	21188477	1043.066	1313.922 #
15) L3 AR-1232-5	5.776	5.108	19528278	20593505	1115.453	1166.013
16) L4 AR-1242-1	5.501	4.658	32186403	25097020	574.872	612.687
17) L4 AR-1242-2	5.524	4.676	46207382	36074646	578.824	631.769
18) L4 AR-1242-3	5.586	4.853	28889171	19993706	581.722	647.725
19) L4 AR-1242-4	5.685	4.937	23087453	21188477	576.080	652.212
20) L4 AR-1242-5	6.425	5.461	9011772	21230282	202.678	568.085 #
21) L5 AR-1248-1	5.501	4.658	32186403	25097020	771.787	809.499
22) L5 AR-1248-2	5.776	4.895	19528278	16345777	307.173	357.461
23) L5 AR-1248-3	5.981	4.937	24030913	21188477	347.478	444.452 #
24) L5 AR-1248-4	6.386	5.108	9722412	20593505	128.206	372.887 #
25) L5 AR-1248-5	6.425	5.502	9011772	5618255	122.122	114.260
26) L6 AR-1254-1	6.361	5.461	20537687	21230282	260.325	262.887
27) L6 AR-1254-2	6.580	5.609	18651944	16252194	154.119	227.105 #
28) L6 AR-1254-3	6.948	6.029	8861865	27988727	72.348	251.228 #
29) L6 AR-1254-4	7.234	6.243	8667464	2137002	98.369	34.744 #
30) L6 AR-1254-5	7.654	6.661	60845760	49333622	601.475	520.375
31) L7 AR-1260-1	7.113	6.144	45229370	41543434	474.468	535.737
32) L7 AR-1260-2	7.372	6.333	55511474	47388734	493.232	527.139
33) L7 AR-1260-3	7.732	6.487	40677436	44344853	505.191	522.253
34) L7 AR-1260-4	7.958	6.960	47223735	37339125	486.457	521.476
35) L7 AR-1260-5	8.275	7.203	85875814	79968947	482.854	520.170
36) L8 AR-1262-1	7.732	6.754	40677436	20287126	344.776	472.217 #
37) L8 AR-1262-2	8.275	6.960	85875814	37339125	426.366	403.130
38) L8 AR-1262-3	8.598	7.488	56750274	19437754	408.066	266.782 #
39) L8 AR-1262-4	8.675	7.551	15604191	60627534	202.965	463.586 #
40) L8 AR-1262-5	9.331	8.047	24570567	18593273	343.549	313.399
41) L9 AR-1268-1	8.598	7.488	56750274	19437754	232.196	89.896 #

Data Path : Z:\pestpcbsrv\HPCHEM1\ECD_P\Data\PP020223\
 Data File : PP055237.D
 Signal(s) : Signal #1: ECD1A.ch Signal #2: ECD2B.ch
 Acq On : 02 Feb 2023 08:57
 Operator : YP\AJ
 Sample : AR1660CCC500
 Misc :
 ALS Vial : 3 Sample Multiplier: 1

Instrument :
 ECD_P
 ClientSampleId :

Integration File signal 1: autoint1.e
 Integration File signal 2: autoint2.e
 Quant Time: Feb 02 20:58:33 2023
 Quant Method : Z:\pestpcbsrv\HPCHEM1\ECD_P\methods\PP012423.M
 Quant Title : GC EXTRACTABLES
 QLast Update : Tue Jan 24 03:37:45 2023
 Response via : Initial Calibration
 Integrator: ChemStation

Volume Inj. : 2 µl
 Signal #1 Phase : ZB-MR1 Signal #2 Phase: ZB-MR2
 Signal #1 Info : 30Mx0.32mmx 0.50µ Signal #2 Info : 30M x 0.32mm x 0.25µm

	Compound	RT#1	RT#2	Resp#1	Resp#2	ng/ml	ng/ml
42)	L9 AR-1268-2	8.675	7.551	15604191	60627534	68.703	310.697 #
43)	L9 AR-1268-3	8.908	7.759	2082039	1005675	10.422	5.855 #
44)	L9 AR-1268-4	9.331	8.047	24570567	18593273	312.816	291.511
45)	L9 AR-1268-5	9.747	8.335	7378648	6463797	11.599	12.274

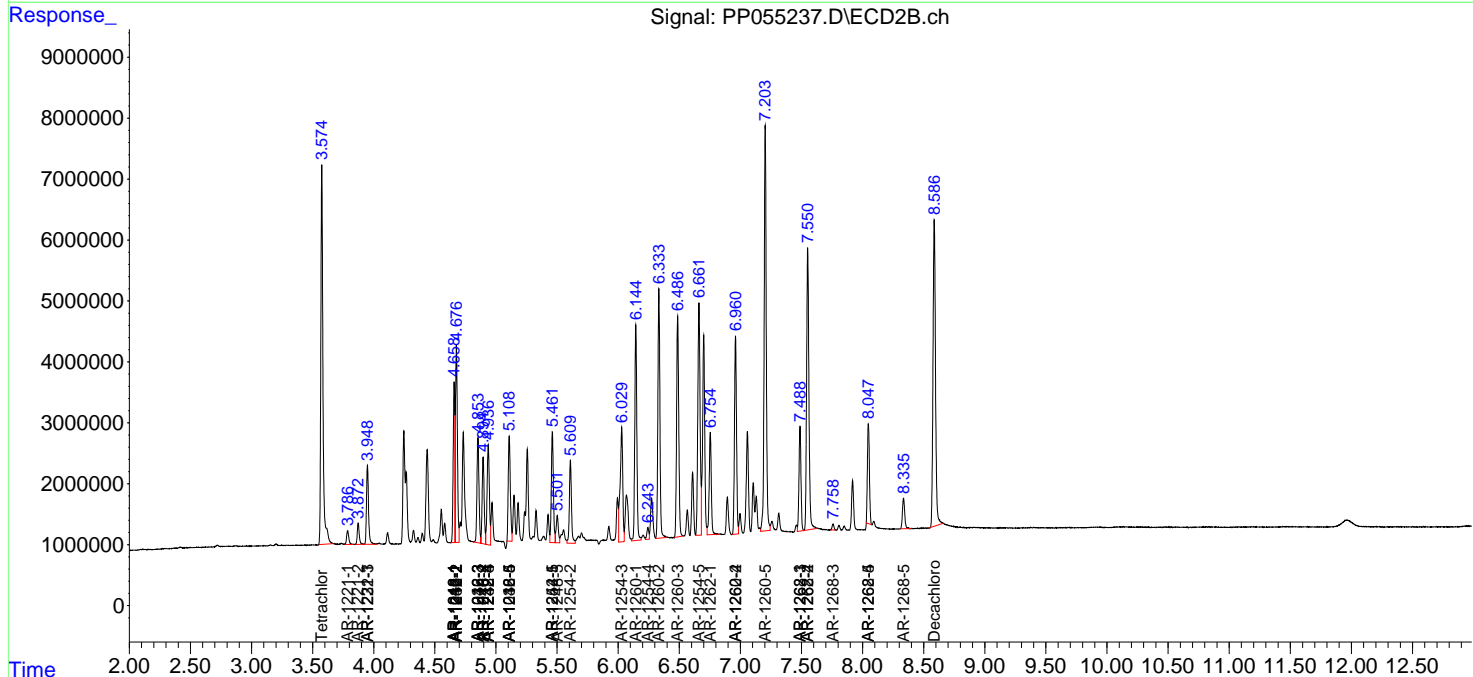
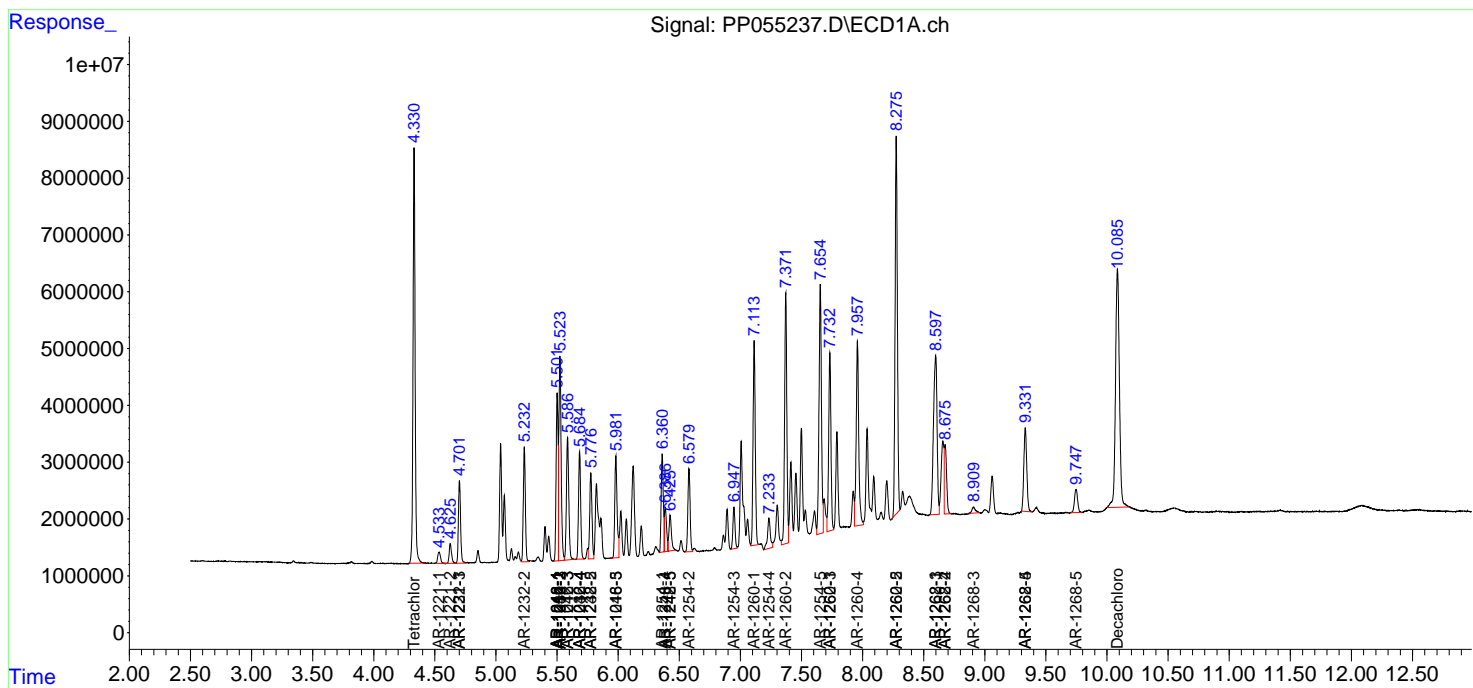
(f)=RT Delta > 1/2 Window (#)=Amounts differ by > 25% (m)=manual int.

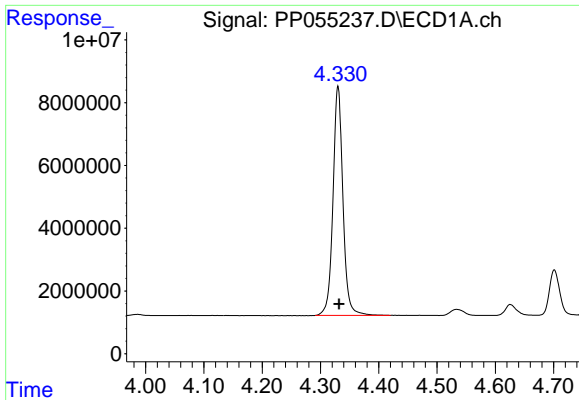
Data Path : Z:\pestpcbsrv\HPCHEM1\ECD_P\Data\PP020223\
 Data File : PP055237.D
 Signal(s) : Signal #1: ECD1A.ch Signal #2: ECD2B.ch
 Acq On : 02 Feb 2023 08:57
 Operator : YP\AJ
 Sample : AR1660CCC500
 Misc :
 ALS Vial : 3 Sample Multiplier: 1

Instrument :
 ECD_P
 ClientSampleId :

Integration File signal 1: autoint1.e
 Integration File signal 2: autoint2.e
 Quant Time: Feb 02 20:58:33 2023
 Quant Method : Z:\pestpcbsrv\HPCHEM1\ECD_P\methods\PP012423.M
 Quant Title : GC EXTRACTABLES
 QLast Update : Tue Jan 24 03:37:45 2023
 Response via : Initial Calibration
 Integrator: ChemStation

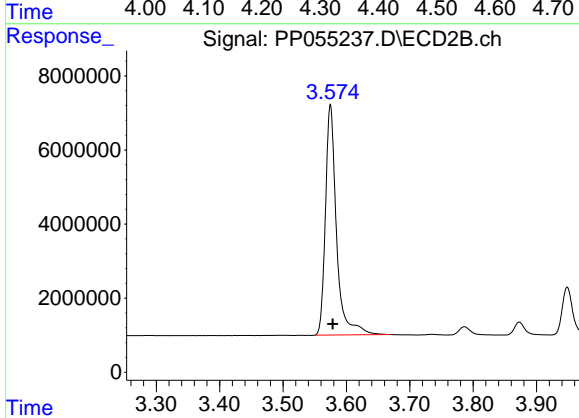
Volume Inj. : 2 µl
 Signal #1 Phase : ZB-MR1 Signal #2 Phase: ZB-MR2
 Signal #1 Info : 30Mx0.32mmx 0.50µ Signal #2 Info : 30M x 0.32mm x 0.25µm



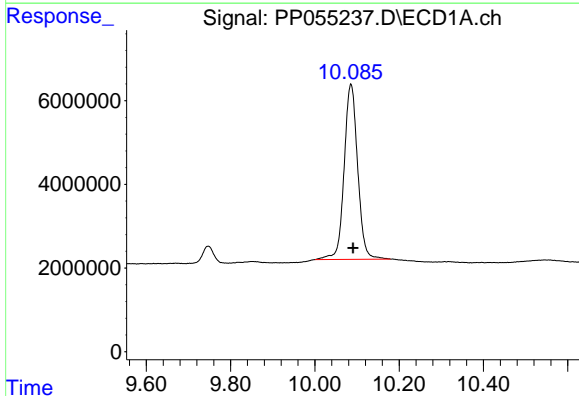


#1 Tetrachloro-m-xylene
R.T.: 4.330 min
Delta R.T.: -0.002 min
Response: 86551140
Conc: 49.78 ng/ml

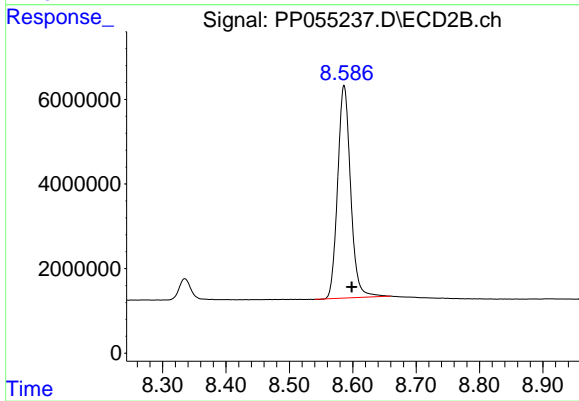
Instrument :
ECD_P
ClientSampleId :



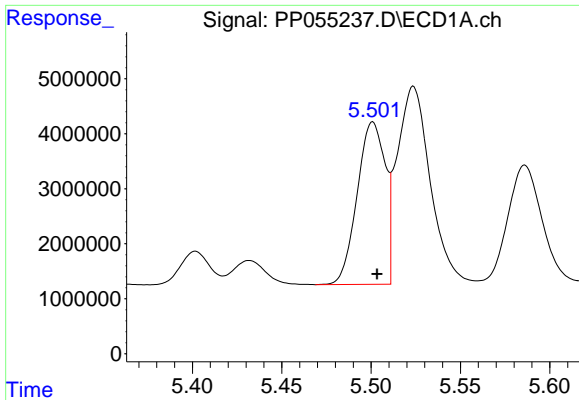
#1 Tetrachloro-m-xylene
R.T.: 3.575 min
Delta R.T.: -0.004 min
Response: 75527291
Conc: 50.31 ng/ml



#2 Decachlorobiphenyl
R.T.: 10.086 min
Delta R.T.: -0.005 min
Response: 93344267
Conc: 53.90 ng/ml



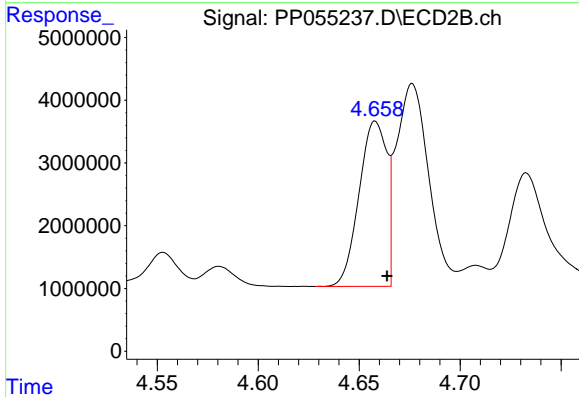
#2 Decachlorobiphenyl
R.T.: 8.586 min
Delta R.T.: -0.012 min
Response: 71417934
Conc: 52.88 ng/ml



#3 AR-1016-1

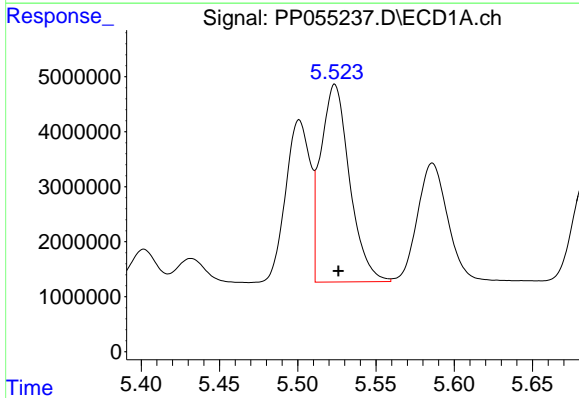
R.T.: 5.501 min
 Delta R.T.: -0.002 min
 Response: 32186403
 Conc: 478.89 ng/ml

Instrument :
 ECD_P
 ClientSampleId :



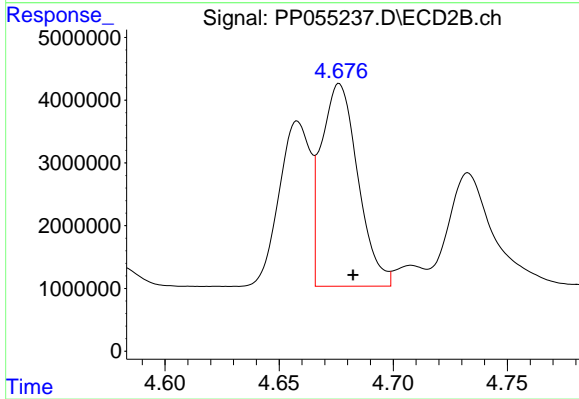
#3 AR-1016-1

R.T.: 4.658 min
 Delta R.T.: -0.006 min
 Response: 25097020
 Conc: 507.07 ng/ml



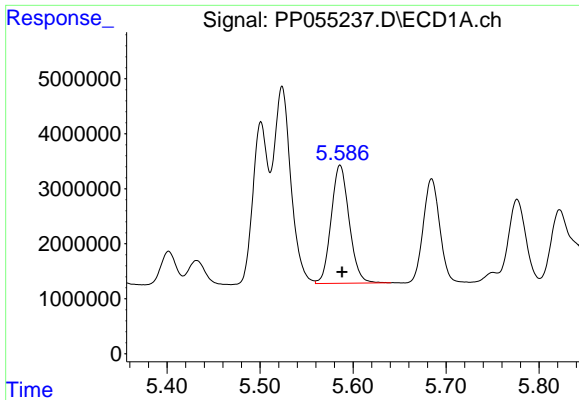
#4 AR-1016-2

R.T.: 5.524 min
 Delta R.T.: -0.002 min
 Response: 46207382
 Conc: 482.18 ng/ml



#4 AR-1016-2

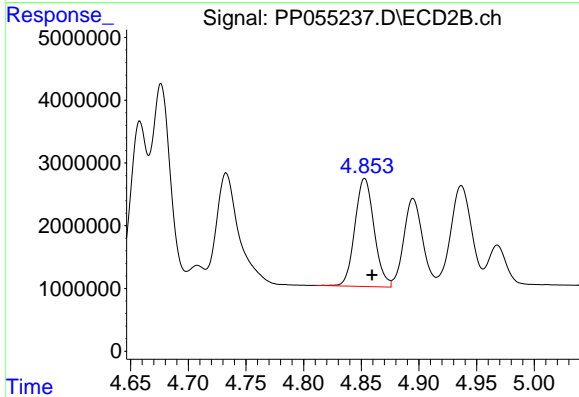
R.T.: 4.676 min
 Delta R.T.: -0.006 min
 Response: 36074646
 Conc: 521.17 ng/ml



#5 AR-1016-3

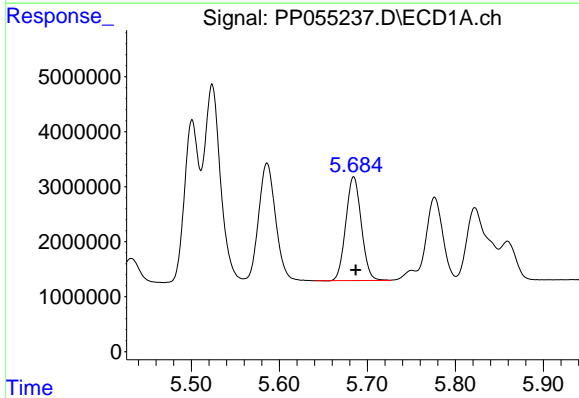
R.T.: 5.586 min
 Delta R.T.: -0.002 min
 Response: 28889171
 Conc: 482.96 ng/ml

Instrument :
 ECD_P
 ClientSampleId :



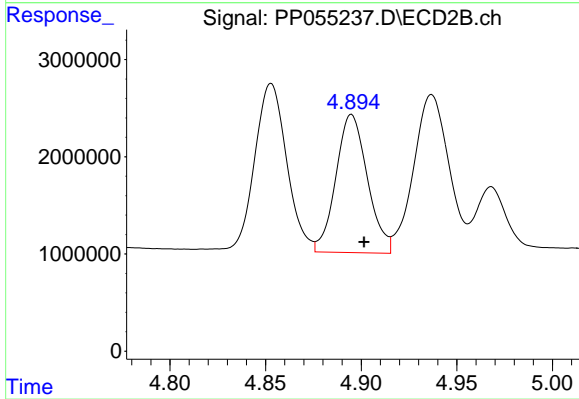
#5 AR-1016-3

R.T.: 4.853 min
 Delta R.T.: -0.006 min
 Response: 19993706
 Conc: 537.51 ng/ml



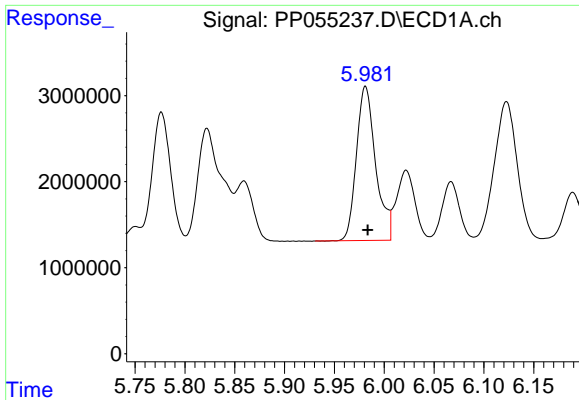
#6 AR-1016-4

R.T.: 5.685 min
 Delta R.T.: -0.002 min
 Response: 23087453
 Conc: 481.81 ng/ml



#6 AR-1016-4

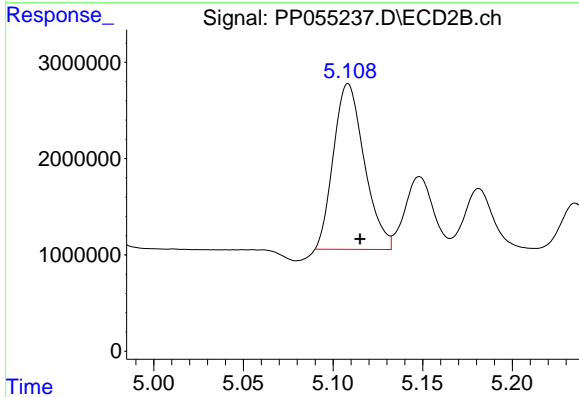
R.T.: 4.895 min
 Delta R.T.: -0.006 min
 Response: 16345777
 Conc: 520.20 ng/ml



#7 AR-1016-5

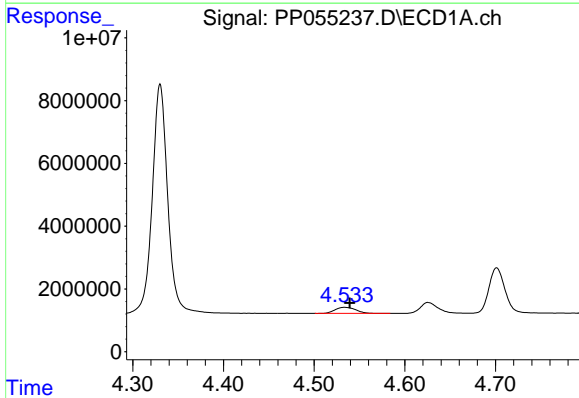
R.T.: 5.981 min
 Delta R.T.: -0.002 min
 Response: 24030913
 Conc: 474.22 ng/ml

Instrument :
 ECD_P
 ClientSampleId :



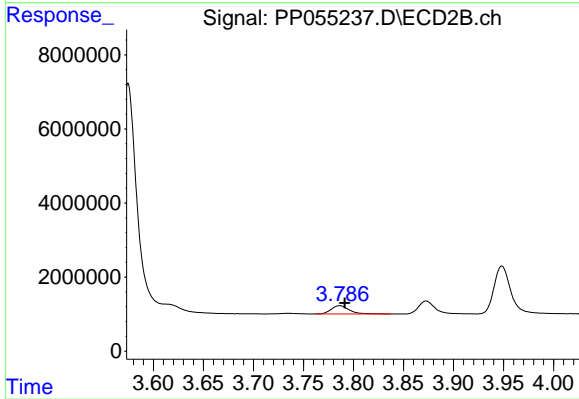
#7 AR-1016-5

R.T.: 5.108 min
 Delta R.T.: -0.007 min
 Response: 20593505
 Conc: 503.70 ng/ml



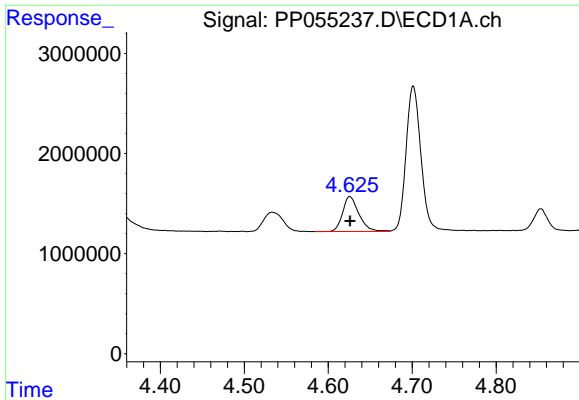
#8 AR-1221-1

R.T.: 4.534 min
 Delta R.T.: -0.006 min
 Response: 3073716
 Conc: 130.71 ng/ml



#8 AR-1221-1

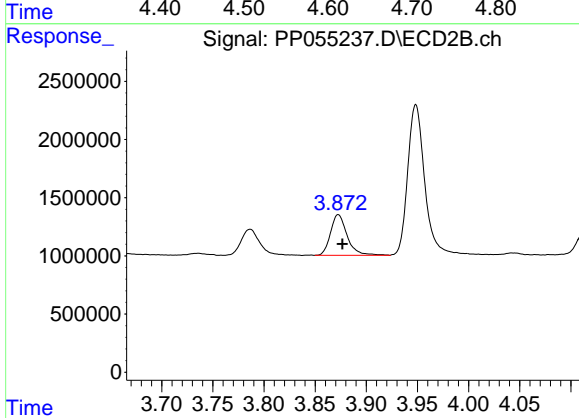
R.T.: 3.786 min
 Delta R.T.: -0.005 min
 Response: 2817386
 Conc: 142.10 ng/ml



#9 AR-1221-2

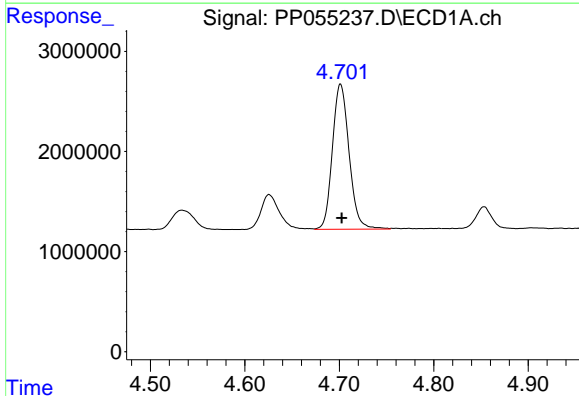
R.T.: 4.626 min
 Delta R.T.: 0.000 min
 Response: 4708382
 Conc: 265.01 ng/ml

Instrument :
 ECD_P
 ClientSampleId :



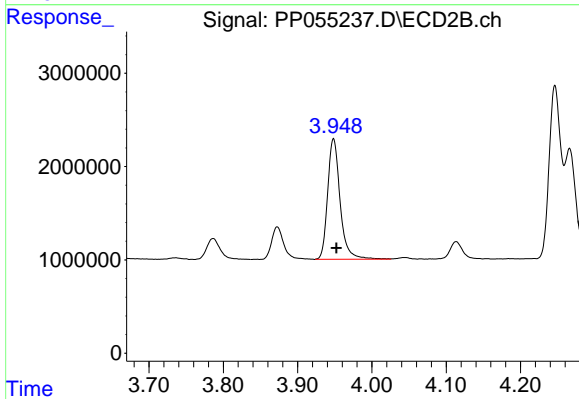
#9 AR-1221-2

R.T.: 3.873 min
 Delta R.T.: -0.004 min
 Response: 3953809
 Conc: 266.75 ng/ml



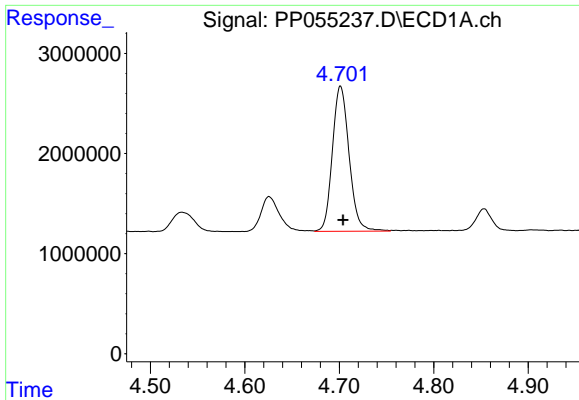
#10 AR-1221-3

R.T.: 4.701 min
 Delta R.T.: -0.001 min
 Response: 17826905
 Conc: 331.30 ng/ml



#10 AR-1221-3

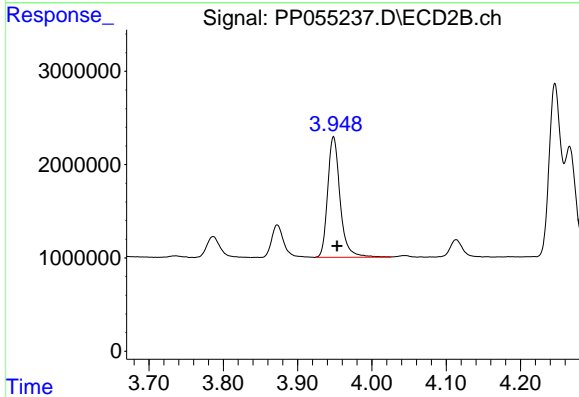
R.T.: 3.948 min
 Delta R.T.: -0.004 min
 Response: 15107046
 Conc: 334.86 ng/ml



#11 AR-1232-1

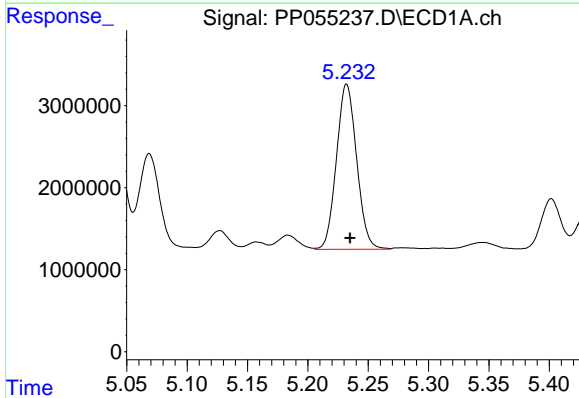
R.T.: 4.701 min
Delta R.T.: -0.003 min
Response: 17826905
Conc: 401.66 ng/ml

Instrument :
ECD_P
ClientSampleId :



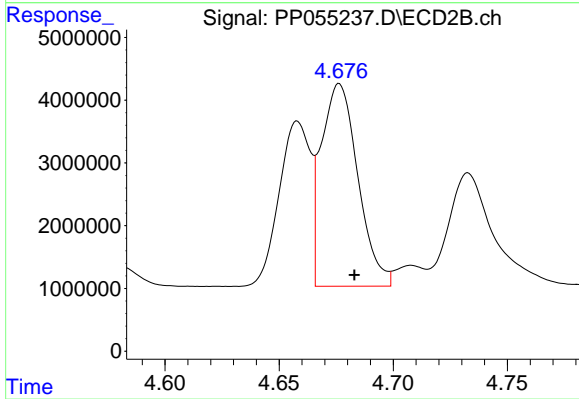
#11 AR-1232-1

R.T.: 3.948 min
Delta R.T.: -0.005 min
Response: 15107046
Conc: 409.86 ng/ml



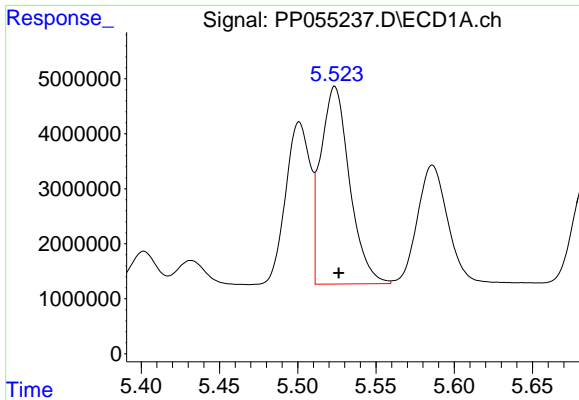
#12 AR-1232-2

R.T.: 5.232 min
Delta R.T.: -0.003 min
Response: 23470991
Conc: 1037.86 ng/ml



#12 AR-1232-2

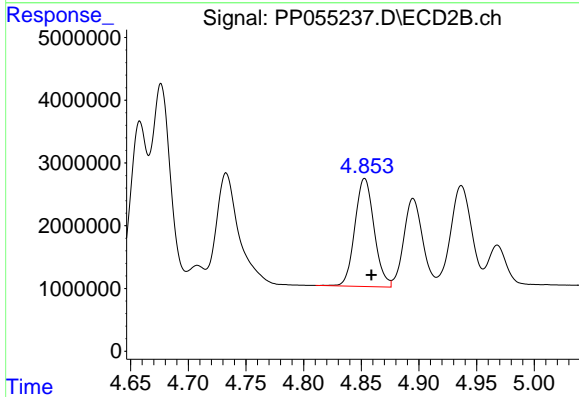
R.T.: 4.676 min
Delta R.T.: -0.007 min
Response: 36074646
Conc: 1129.36 ng/ml



#13 AR-1232-3

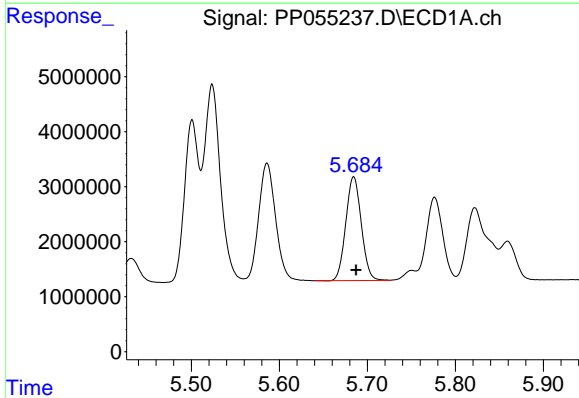
R.T.: 5.524 min
 Delta R.T.: -0.002 min
 Response: 46207382
 Conc: 1052.15 ng/ml

Instrument :
 ECD_P
 ClientSampleId :



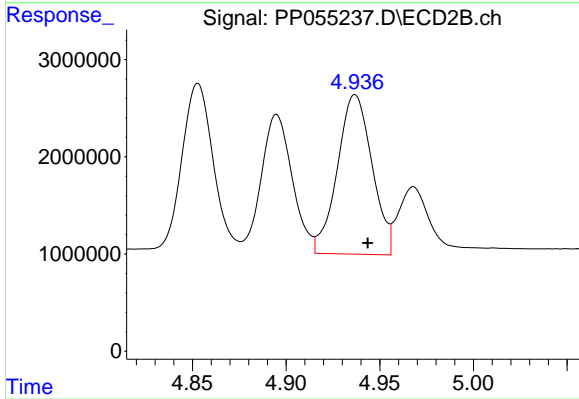
#13 AR-1232-3

R.T.: 4.853 min
 Delta R.T.: -0.006 min
 Response: 19993706
 Conc: 1199.31 ng/ml



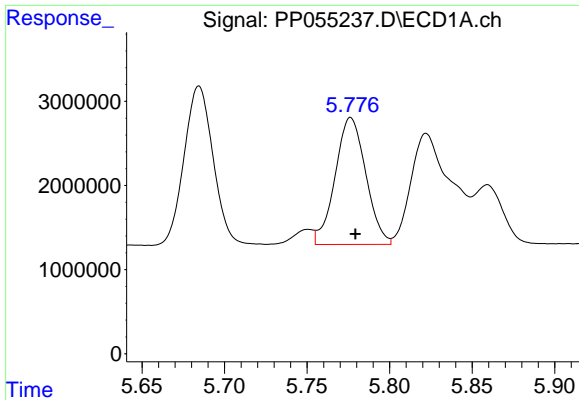
#14 AR-1232-4

R.T.: 5.685 min
 Delta R.T.: -0.003 min
 Response: 23087453
 Conc: 1043.07 ng/ml



#14 AR-1232-4

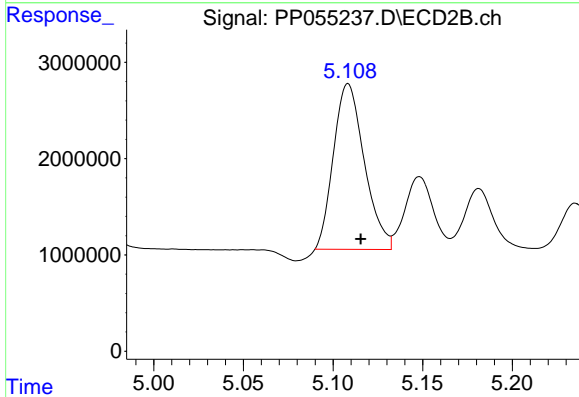
R.T.: 4.937 min
 Delta R.T.: -0.007 min
 Response: 21188477
 Conc: 1313.92 ng/ml



#15 AR-1232-5

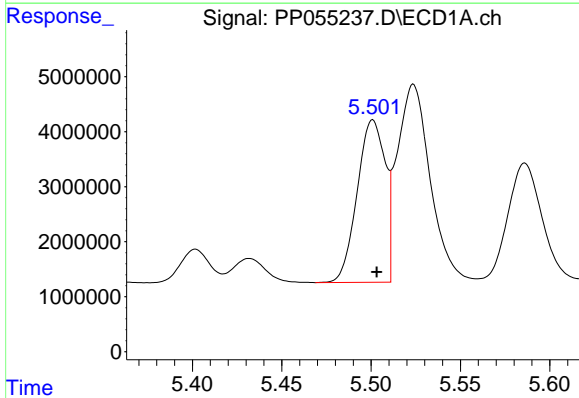
R.T.: 5.776 min
 Delta R.T.: -0.003 min
 Response: 19528278
 Conc: 1115.45 ng/ml

Instrument :
 ECD_P
 ClientSampleId :



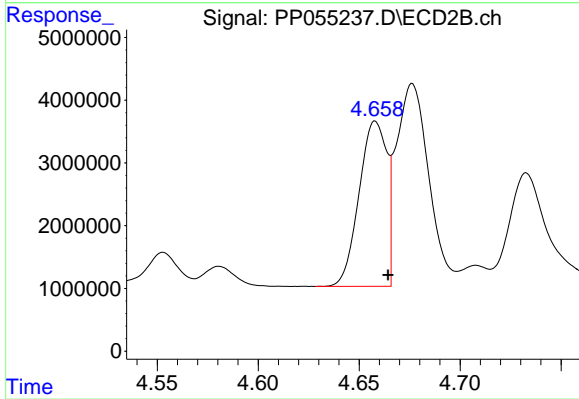
#15 AR-1232-5

R.T.: 5.108 min
 Delta R.T.: -0.007 min
 Response: 20593505
 Conc: 1166.01 ng/ml



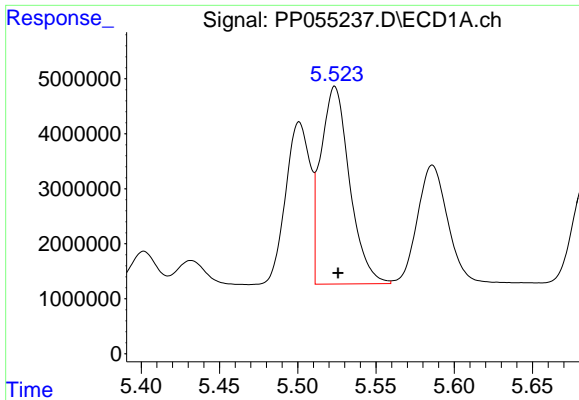
#16 AR-1242-1

R.T.: 5.501 min
 Delta R.T.: -0.002 min
 Response: 32186403
 Conc: 574.87 ng/ml



#16 AR-1242-1

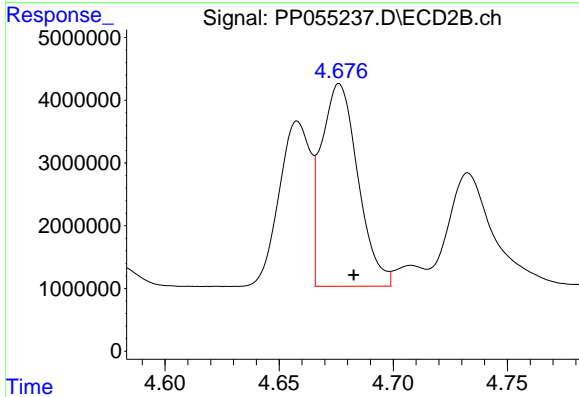
R.T.: 4.658 min
 Delta R.T.: -0.006 min
 Response: 25097020
 Conc: 612.69 ng/ml



#17 AR-1242-2

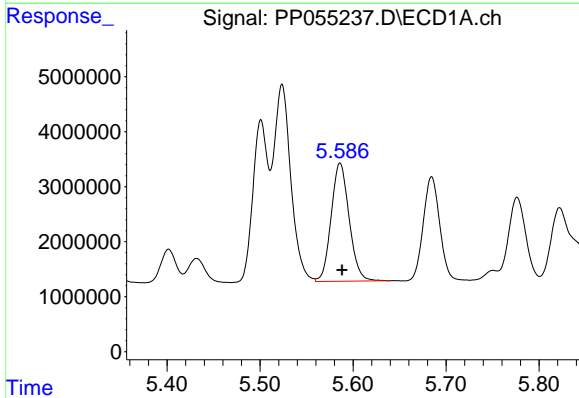
R.T.: 5.524 min
 Delta R.T.: -0.002 min
 Response: 46207382
 Conc: 578.82 ng/ml

Instrument :
 ECD_P
 ClientSampleId :



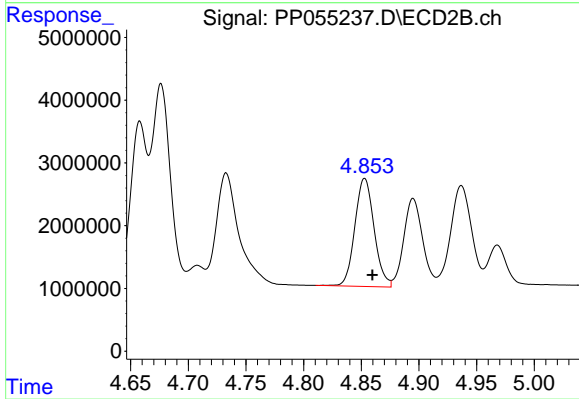
#17 AR-1242-2

R.T.: 4.676 min
 Delta R.T.: -0.006 min
 Response: 36074646
 Conc: 631.77 ng/ml



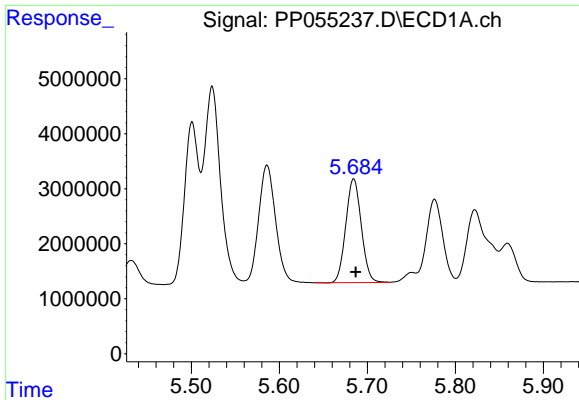
#18 AR-1242-3

R.T.: 5.586 min
 Delta R.T.: -0.002 min
 Response: 28889171
 Conc: 581.72 ng/ml



#18 AR-1242-3

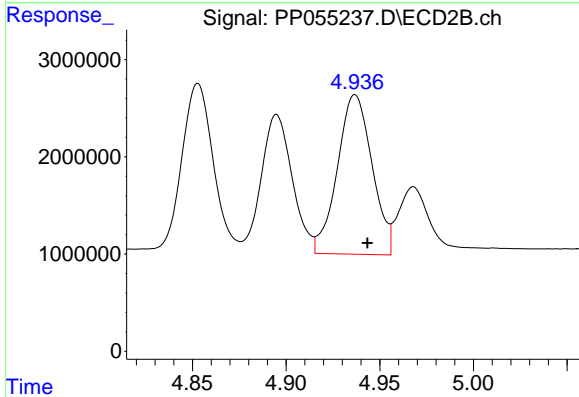
R.T.: 4.853 min
 Delta R.T.: -0.007 min
 Response: 19993706
 Conc: 647.72 ng/ml



#19 AR-1242-4

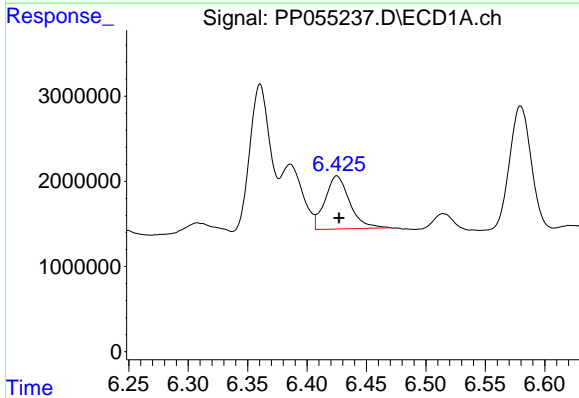
R.T.: 5.685 min
 Delta R.T.: -0.002 min
 Response: 23087453
 Conc: 576.08 ng/ml

Instrument :
 ECD_P
 ClientSampleId :



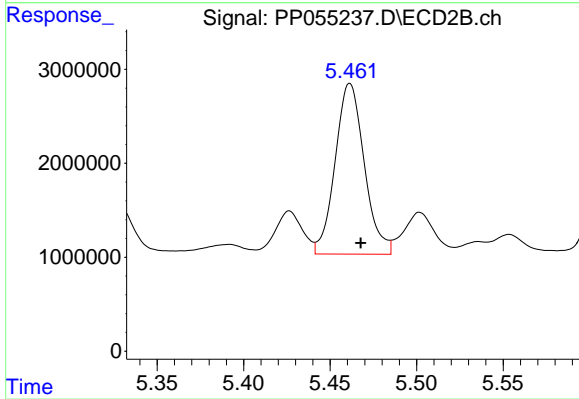
#19 AR-1242-4

R.T.: 4.937 min
 Delta R.T.: -0.007 min
 Response: 21188477
 Conc: 652.21 ng/ml



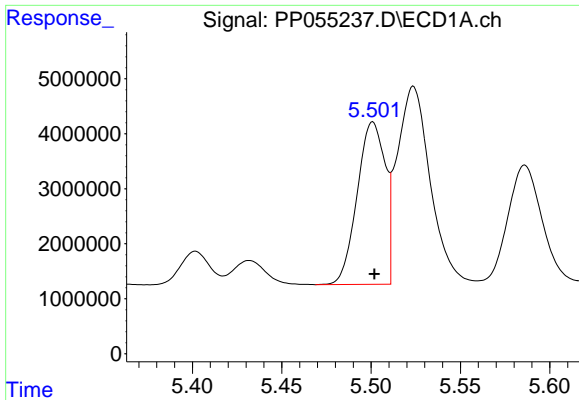
#20 AR-1242-5

R.T.: 6.425 min
 Delta R.T.: -0.002 min
 Response: 9011772
 Conc: 202.68 ng/ml



#20 AR-1242-5

R.T.: 5.461 min
 Delta R.T.: -0.006 min
 Response: 21230282
 Conc: 568.08 ng/ml

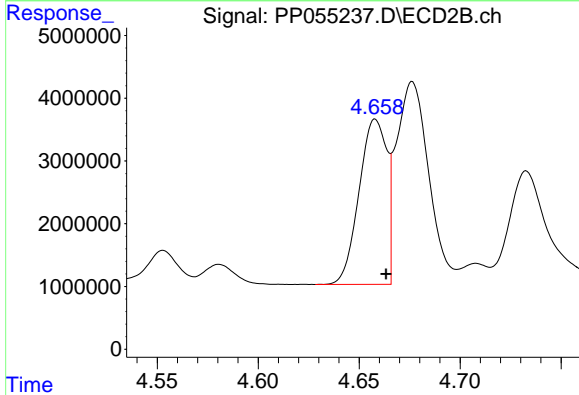


#21 AR-1248-1

R.T.: 5.501 min
 Delta R.T.: 0.000 min
 Response: 32186403
 Conc: 771.79 ng/ml

Instrument :
 ECD_P
 ClientSampleId :

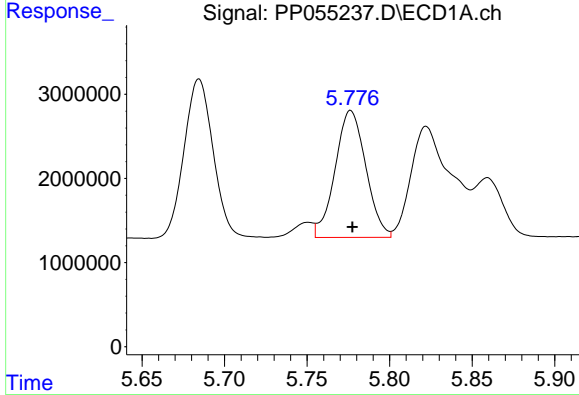
Time



#21 AR-1248-1

R.T.: 4.658 min
 Delta R.T.: -0.005 min
 Response: 25097020
 Conc: 809.50 ng/ml

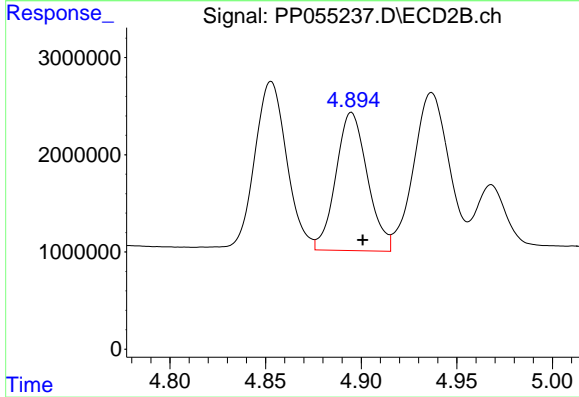
Time



#22 AR-1248-2

R.T.: 5.776 min
 Delta R.T.: 0.000 min
 Response: 19528278
 Conc: 307.17 ng/ml

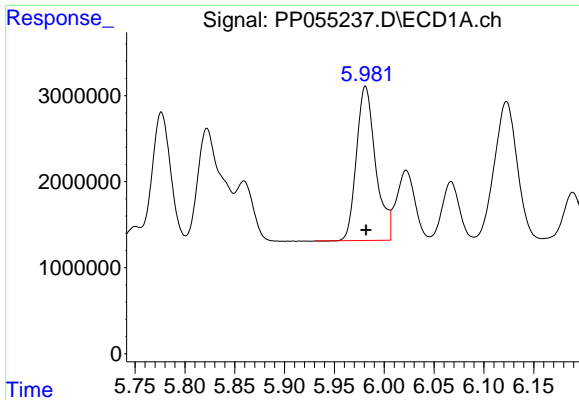
Time



#22 AR-1248-2

R.T.: 4.895 min
 Delta R.T.: -0.006 min
 Response: 16345777
 Conc: 357.46 ng/ml

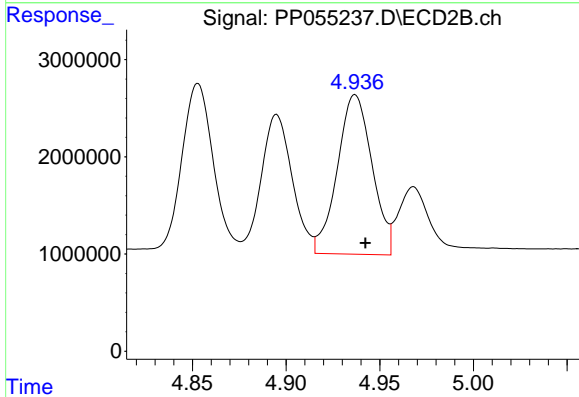
Time



#23 AR-1248-3

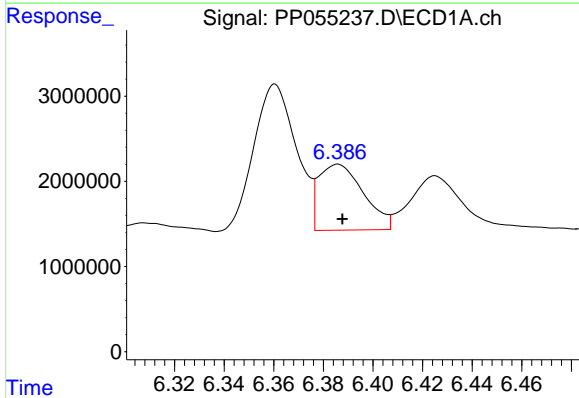
R.T.: 5.981 min
 Delta R.T.: 0.000 min
 Response: 24030913
 Conc: 347.48 ng/ml

Instrument :
 ECD_P
 ClientSampleId :



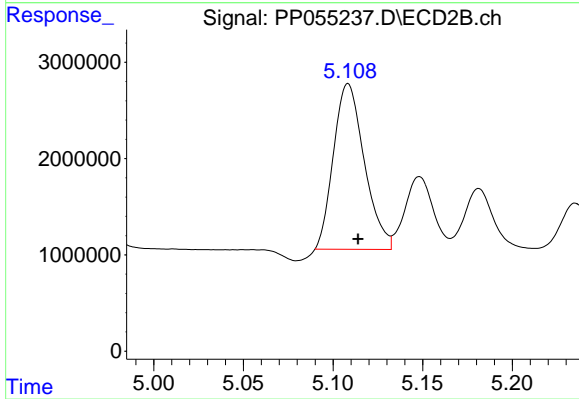
#23 AR-1248-3

R.T.: 4.937 min
 Delta R.T.: -0.006 min
 Response: 21188477
 Conc: 444.45 ng/ml



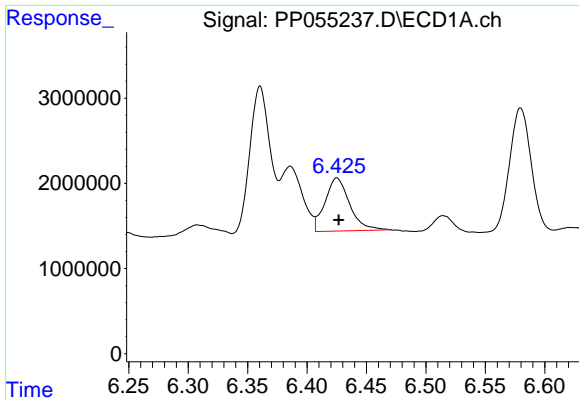
#24 AR-1248-4

R.T.: 6.386 min
 Delta R.T.: -0.002 min
 Response: 9722412
 Conc: 128.21 ng/ml



#24 AR-1248-4

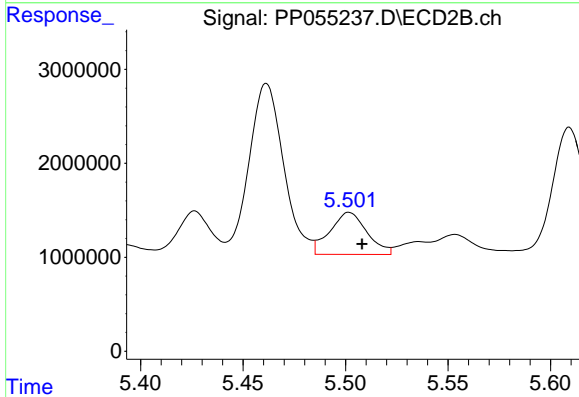
R.T.: 5.108 min
 Delta R.T.: -0.005 min
 Response: 20593505
 Conc: 372.89 ng/ml



#25 AR-1248-5

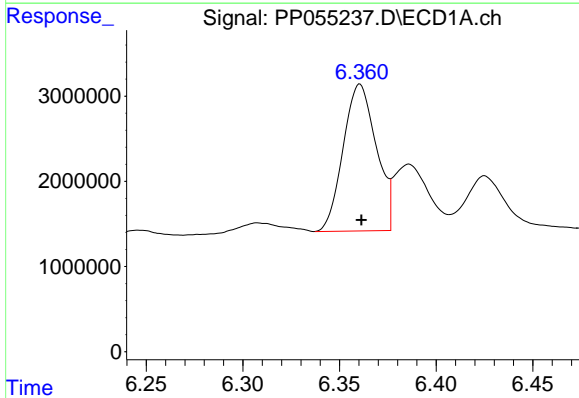
R.T.: 6.425 min
 Delta R.T.: -0.002 min
 Response: 9011772
 Conc: 122.12 ng/ml

Instrument :
 ECD_P
 ClientSampleId :



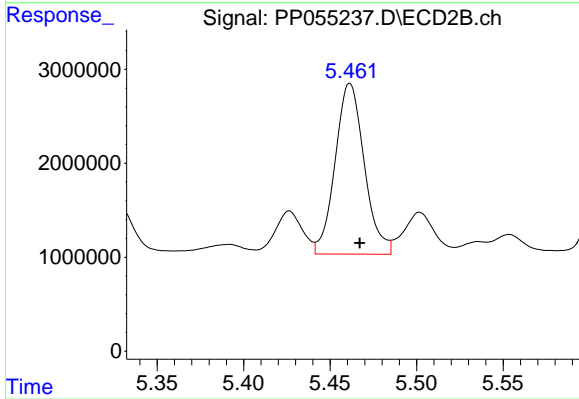
#25 AR-1248-5

R.T.: 5.502 min
 Delta R.T.: -0.006 min
 Response: 5618255
 Conc: 114.26 ng/ml



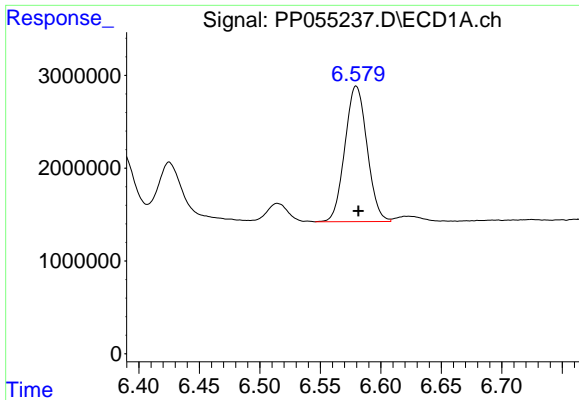
#26 AR-1254-1

R.T.: 6.361 min
 Delta R.T.: 0.000 min
 Response: 20537687
 Conc: 260.33 ng/ml



#26 AR-1254-1

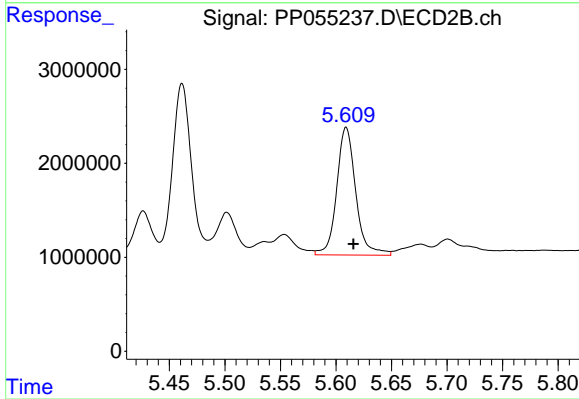
R.T.: 5.461 min
 Delta R.T.: -0.006 min
 Response: 21230282
 Conc: 262.89 ng/ml



#27 AR-1254-2

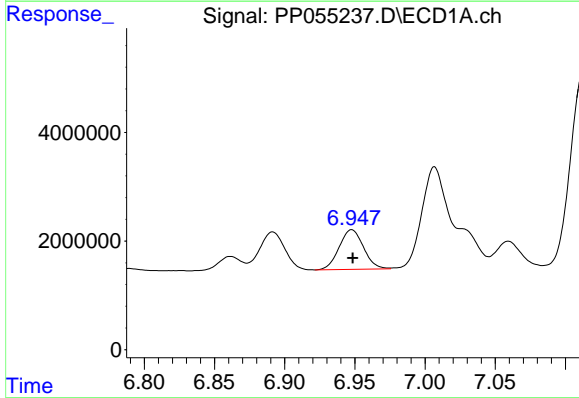
R.T.: 6.580 min
 Delta R.T.: -0.002 min
 Response: 18651944
 Conc: 154.12 ng/ml

Instrument :
 ECD_P
 ClientSampleId :



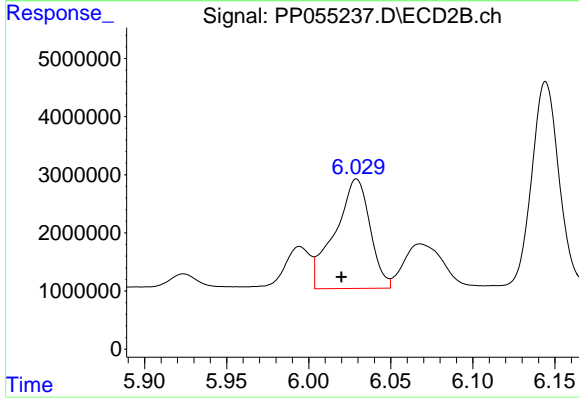
#27 AR-1254-2

R.T.: 5.609 min
 Delta R.T.: -0.006 min
 Response: 16252194
 Conc: 227.10 ng/ml



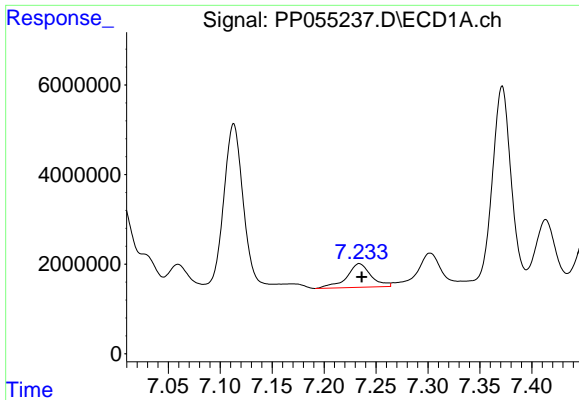
#28 AR-1254-3

R.T.: 6.948 min
 Delta R.T.: 0.000 min
 Response: 8861865
 Conc: 72.35 ng/ml



#28 AR-1254-3

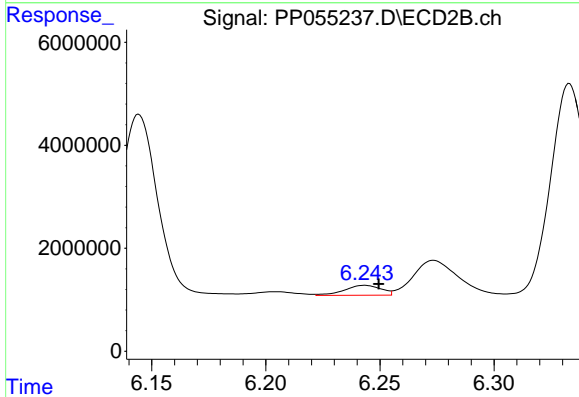
R.T.: 6.029 min
 Delta R.T.: 0.009 min
 Response: 27988727
 Conc: 251.23 ng/ml



#29 AR-1254-4

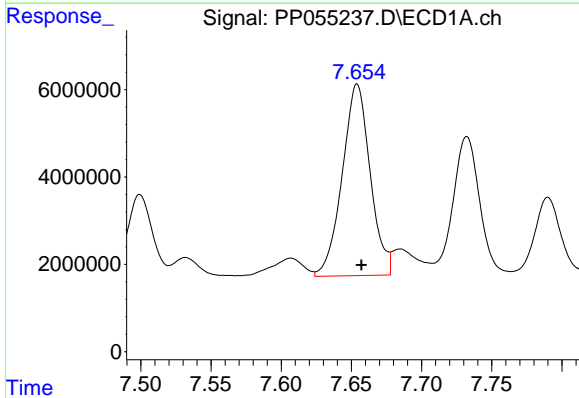
R.T.: 7.234 min
 Delta R.T.: -0.002 min
 Response: 8667464
 Conc: 98.37 ng/ml

Instrument :
 ECD_P
 ClientSampleId :



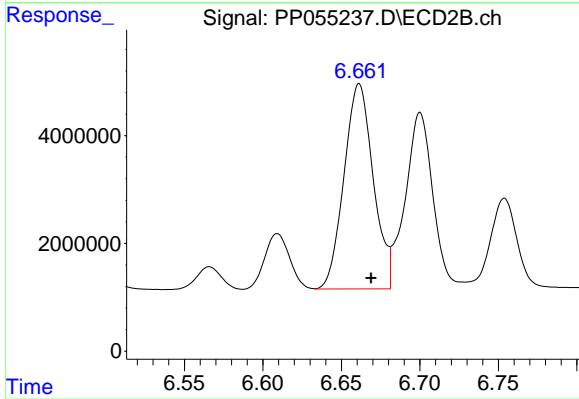
#29 AR-1254-4

R.T.: 6.243 min
 Delta R.T.: -0.006 min
 Response: 2137002
 Conc: 34.74 ng/ml



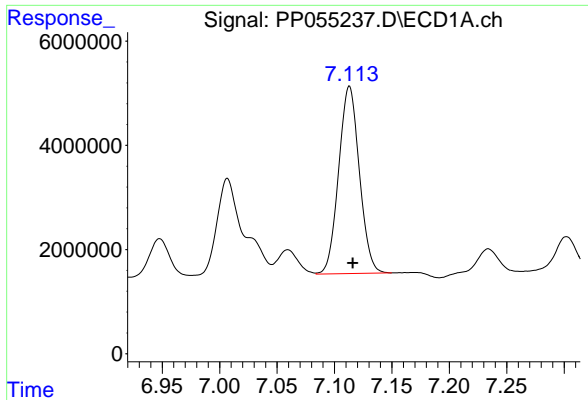
#30 AR-1254-5

R.T.: 7.654 min
 Delta R.T.: -0.003 min
 Response: 60845760
 Conc: 601.48 ng/ml



#30 AR-1254-5

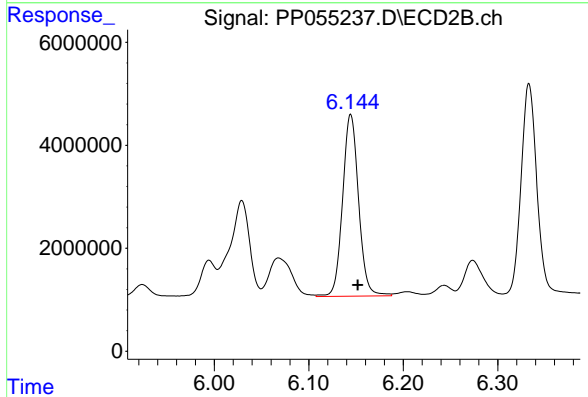
R.T.: 6.661 min
 Delta R.T.: -0.007 min
 Response: 49333622
 Conc: 520.37 ng/ml



#31 AR-1260-1

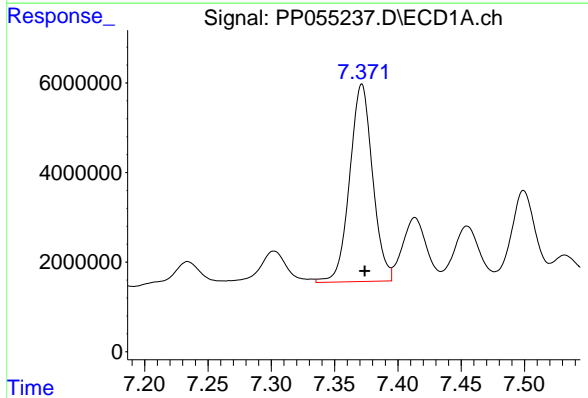
R.T.: 7.113 min
 Delta R.T.: -0.003 min
 Response: 45229370
 Conc: 474.47 ng/ml

Instrument :
 ECD_P
 ClientSampleId :



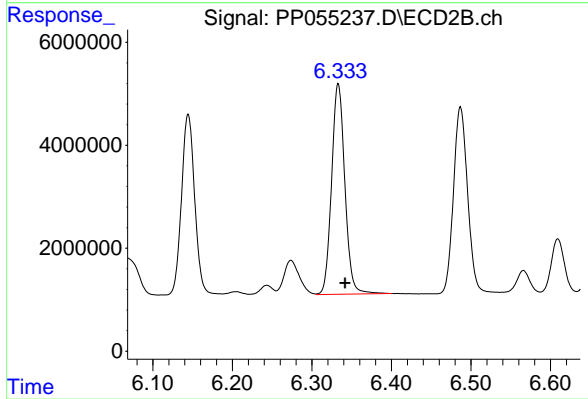
#31 AR-1260-1

R.T.: 6.144 min
 Delta R.T.: -0.008 min
 Response: 41543434
 Conc: 535.74 ng/ml



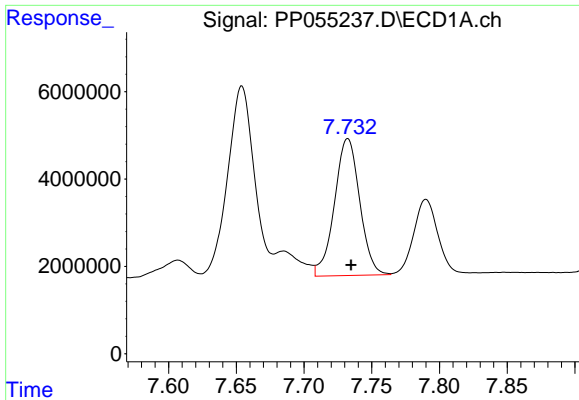
#32 AR-1260-2

R.T.: 7.372 min
 Delta R.T.: -0.002 min
 Response: 55511474
 Conc: 493.23 ng/ml



#32 AR-1260-2

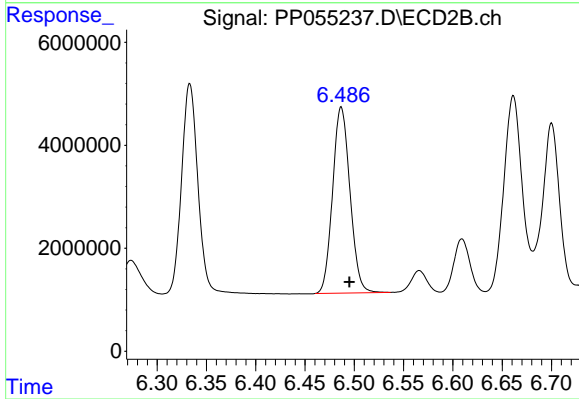
R.T.: 6.333 min
 Delta R.T.: -0.008 min
 Response: 47388734
 Conc: 527.14 ng/ml



#33 AR-1260-3

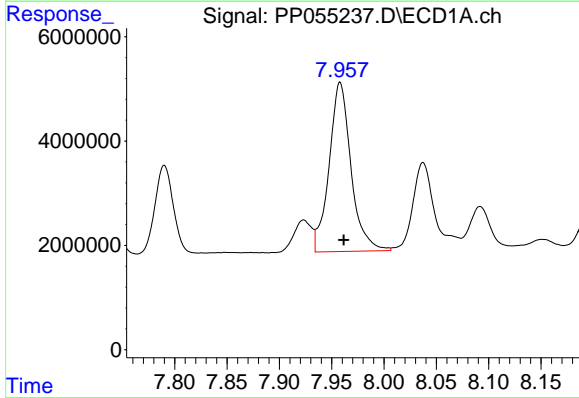
R.T.: 7.732 min
 Delta R.T.: -0.002 min
 Response: 40677436
 Conc: 505.19 ng/ml

Instrument :
 ECD_P
 ClientSampleId :



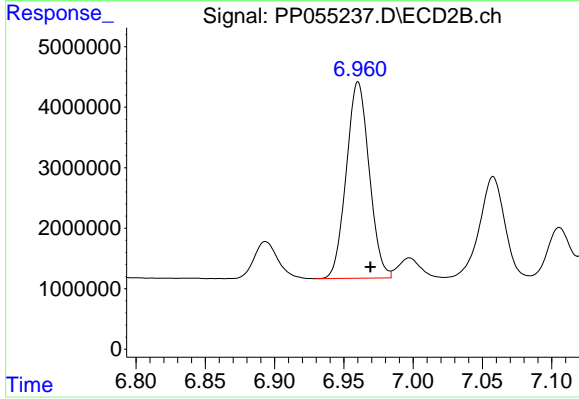
#33 AR-1260-3

R.T.: 6.487 min
 Delta R.T.: -0.008 min
 Response: 44344853
 Conc: 522.25 ng/ml



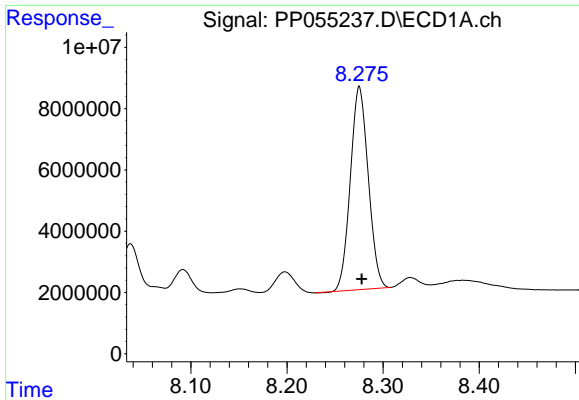
#34 AR-1260-4

R.T.: 7.958 min
 Delta R.T.: -0.003 min
 Response: 47223735
 Conc: 486.46 ng/ml



#34 AR-1260-4

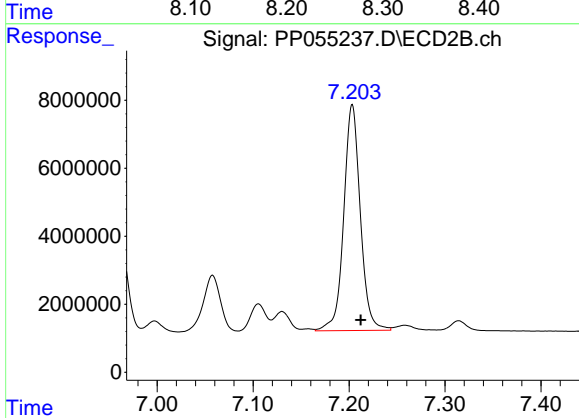
R.T.: 6.960 min
 Delta R.T.: -0.009 min
 Response: 37339125
 Conc: 521.48 ng/ml



#35 AR-1260-5

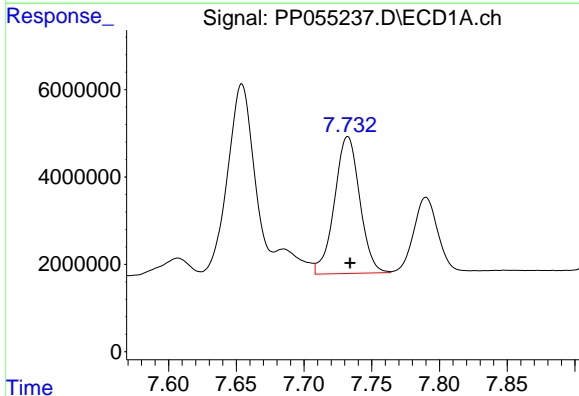
R.T.: 8.275 min
 Delta R.T.: -0.002 min
 Response: 85875814
 Conc: 482.85 ng/ml

Instrument :
 ECD_P
 ClientSampleId :



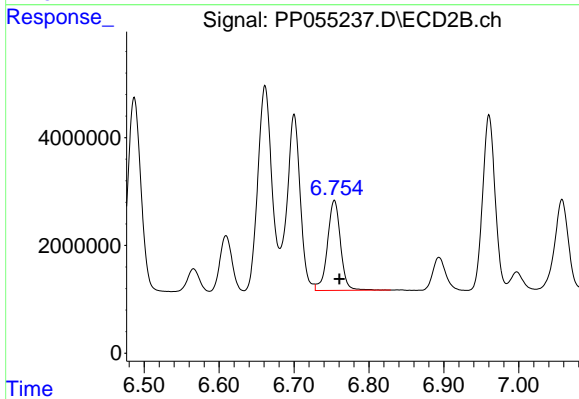
#35 AR-1260-5

R.T.: 7.203 min
 Delta R.T.: -0.009 min
 Response: 79968947
 Conc: 520.17 ng/ml



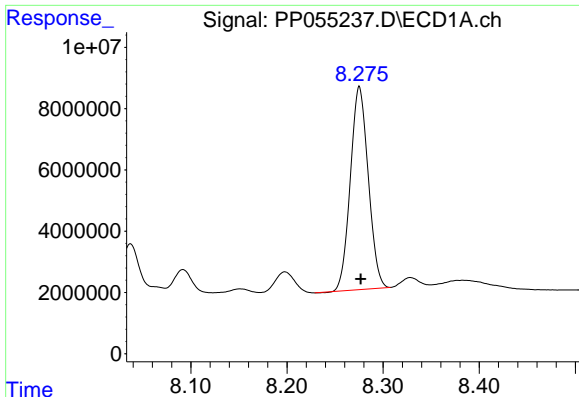
#36 AR-1262-1

R.T.: 7.732 min
 Delta R.T.: -0.002 min
 Response: 40677436
 Conc: 344.78 ng/ml



#36 AR-1262-1

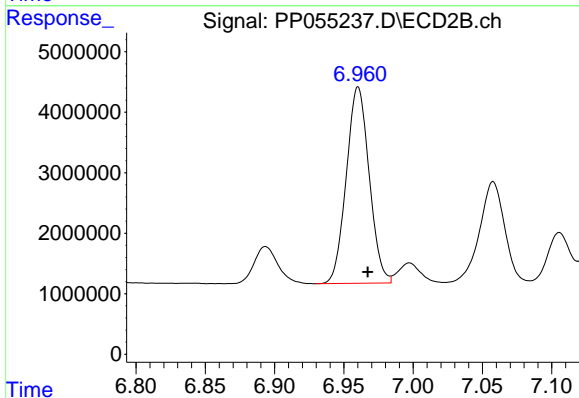
R.T.: 6.754 min
 Delta R.T.: -0.006 min
 Response: 20287126
 Conc: 472.22 ng/ml



#37 AR-1262-2

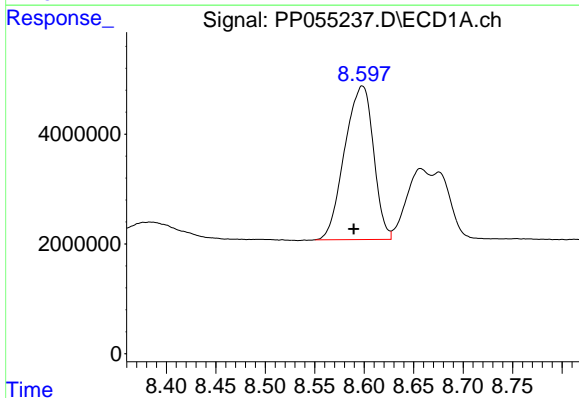
R.T.: 8.275 min
 Delta R.T.: -0.002 min
 Response: 85875814
 Conc: 426.37 ng/ml

Instrument :
 ECD_P
 ClientSampleId :



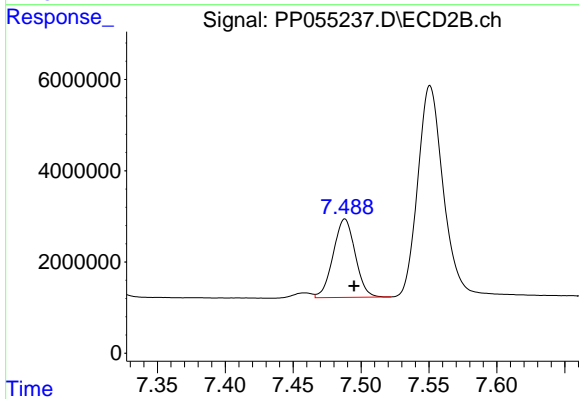
#37 AR-1262-2

R.T.: 6.960 min
 Delta R.T.: -0.007 min
 Response: 37339125
 Conc: 403.13 ng/ml



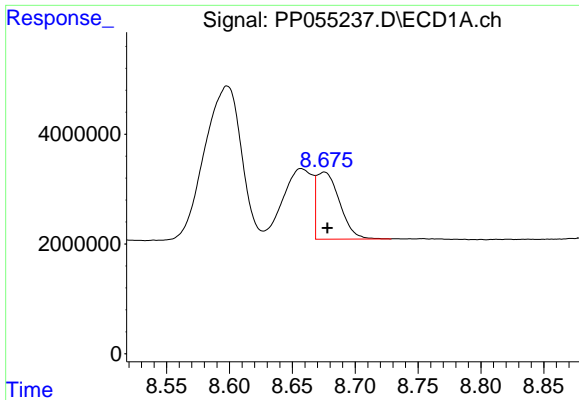
#38 AR-1262-3

R.T.: 8.598 min
 Delta R.T.: 0.009 min
 Response: 56750274
 Conc: 408.07 ng/ml



#38 AR-1262-3

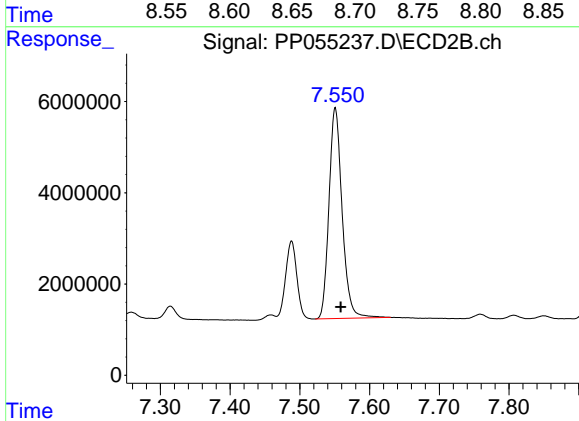
R.T.: 7.488 min
 Delta R.T.: -0.007 min
 Response: 19437754
 Conc: 266.78 ng/ml



#39 AR-1262-4

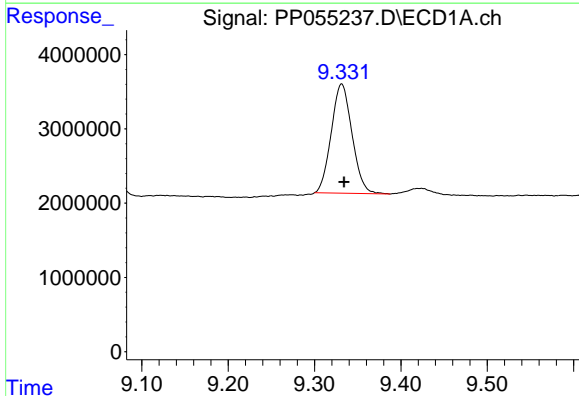
R.T.: 8.675 min
Delta R.T.: -0.002 min
Response: 15604191
Conc: 202.96 ng/ml

Instrument :
ECD_P
ClientSampleId :



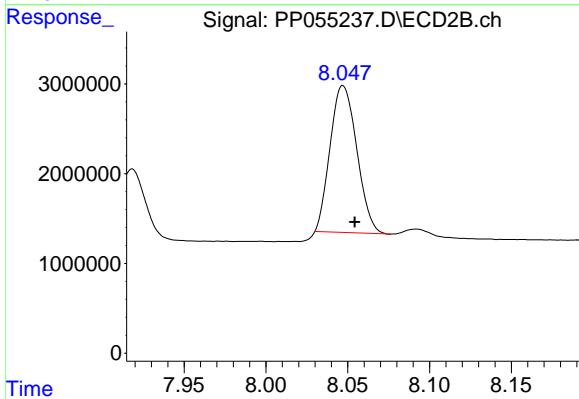
#39 AR-1262-4

R.T.: 7.551 min
Delta R.T.: -0.008 min
Response: 60627534
Conc: 463.59 ng/ml



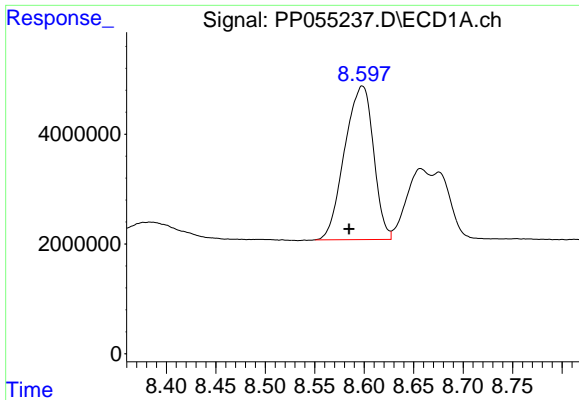
#40 AR-1262-5

R.T.: 9.331 min
Delta R.T.: -0.003 min
Response: 24570567
Conc: 343.55 ng/ml



#40 AR-1262-5

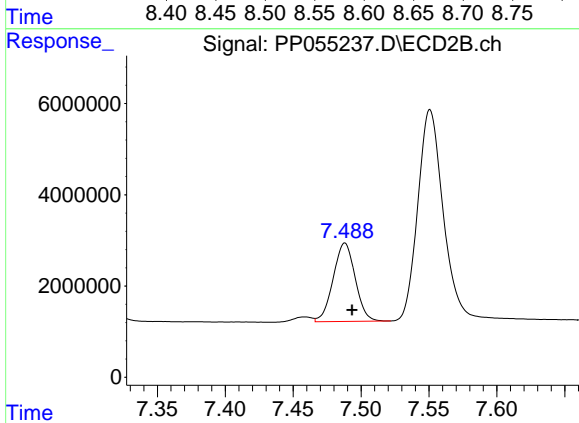
R.T.: 8.047 min
Delta R.T.: -0.007 min
Response: 18593273
Conc: 313.40 ng/ml



#41 AR-1268-1

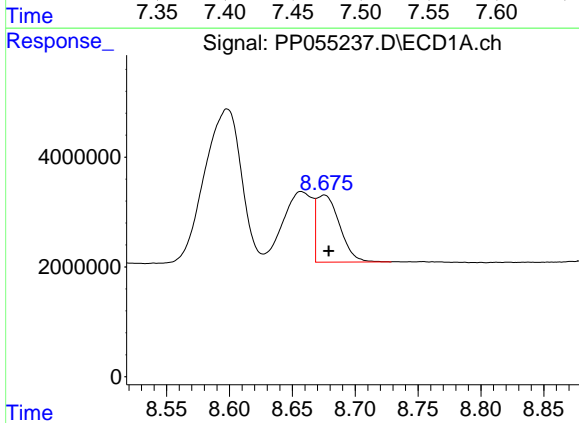
R.T.: 8.598 min
 Delta R.T.: 0.013 min
 Response: 56750274
 Conc: 232.20 ng/ml

Instrument :
 ECD_P
 ClientSampleId :



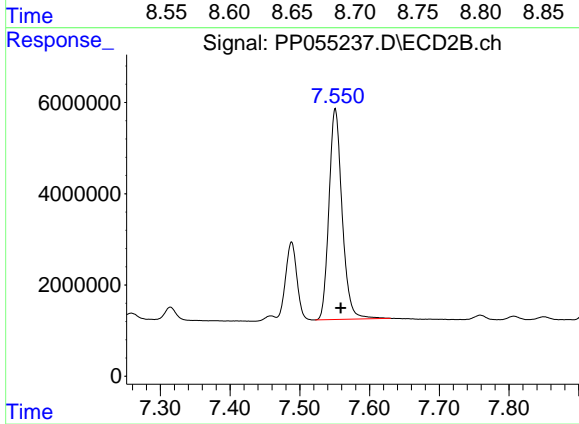
#41 AR-1268-1

R.T.: 7.488 min
 Delta R.T.: -0.005 min
 Response: 19437754
 Conc: 89.90 ng/ml



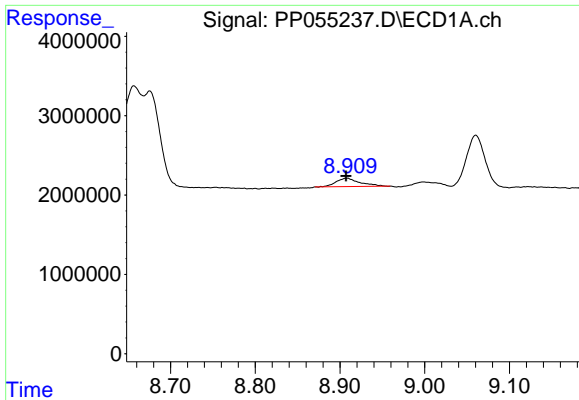
#42 AR-1268-2

R.T.: 8.675 min
 Delta R.T.: -0.004 min
 Response: 15604191
 Conc: 68.70 ng/ml



#42 AR-1268-2

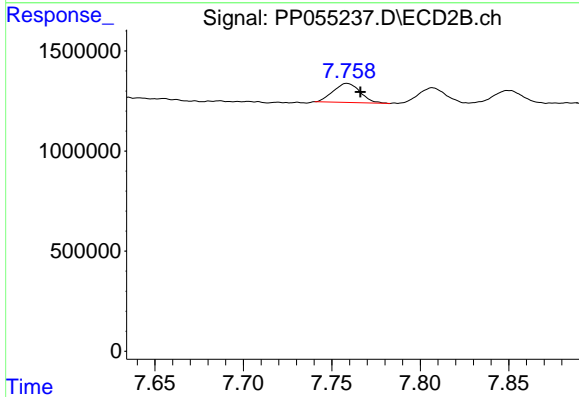
R.T.: 7.551 min
 Delta R.T.: -0.008 min
 Response: 60627534
 Conc: 310.70 ng/ml



#43 AR-1268-3

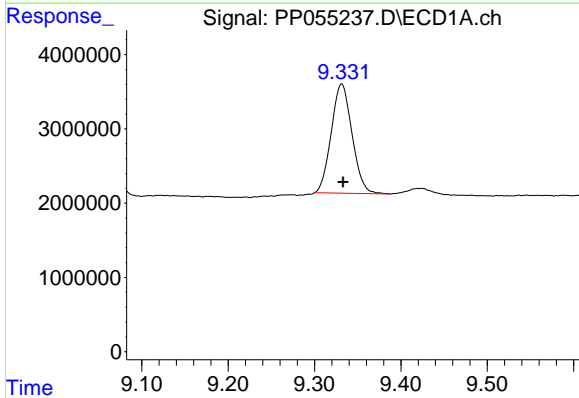
R.T.: 8.908 min
 Delta R.T.: 0.001 min
 Response: 2082039
 Conc: 10.42 ng/ml

Instrument :
 ECD_P
 ClientSampleId :



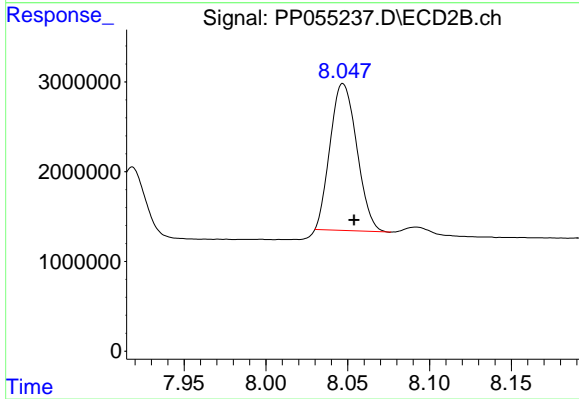
#43 AR-1268-3

R.T.: 7.759 min
 Delta R.T.: -0.008 min
 Response: 1005675
 Conc: 5.85 ng/ml



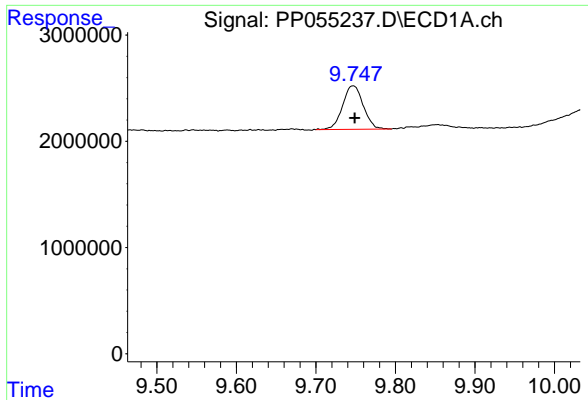
#44 AR-1268-4

R.T.: 9.331 min
 Delta R.T.: -0.002 min
 Response: 24570567
 Conc: 312.82 ng/ml



#44 AR-1268-4

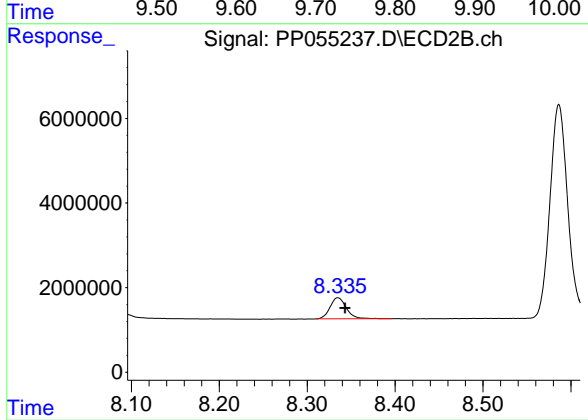
R.T.: 8.047 min
 Delta R.T.: -0.007 min
 Response: 18593273
 Conc: 291.51 ng/ml



#45 AR-1268-5

R.T.: 9.747 min
Delta R.T.: -0.002 min
Response: 7378648
Conc: 11.60 ng/ml

Instrument :
ECD_P
ClientSampleId :



#45 AR-1268-5

R.T.: 8.335 min
Delta R.T.: -0.008 min
Response: 6463797
Conc: 12.27 ng/ml