

Data Path : Z:\pestpcbsrv\HPCHEM1\ECD\_P\Data\PP020223\  
 Data File : PP055240.D  
 Signal(s) : Signal #1: ECD1A.ch Signal #2: ECD2B.ch  
 Acq On : 02 Feb 2023 09:46  
 Operator : YP\AJ  
 Sample : AR1254CCC500  
 Misc :  
 ALS Vial : 6 Sample Multiplier: 1

Instrument :  
 ECD\_P  
 ClientSampleId :

Integration File signal 1: autoint1.e  
 Integration File signal 2: autoint2.e  
 Quant Time: Feb 02 21:01:54 2023  
 Quant Method : Z:\pestpcbsrv\HPCHEM1\ECD\_P\methods\PP012423.M  
 Quant Title : GC EXTRACTABLES  
 QLast Update : Tue Jan 24 03:37:45 2023  
 Response via : Initial Calibration  
 Integrator: ChemStation

Volume Inj. : 2 µl  
 Signal #1 Phase : ZB-MR1 Signal #2 Phase: ZB-MR2  
 Signal #1 Info : 30Mx0.32mmx 0.50µ Signal #2 Info : 30M x 0.32mm x 0.25µm

Compound	RT#1	RT#2	Resp#1	Resp#2	ng/ml	ng/ml
System Monitoring Compounds						
1) SA Tetrachlo...	4.328	3.574	84697339	73813068	48.712	49.169
2) SA Decachlor...	10.082	8.585	84292694	69688094	48.677	51.599
Target Compounds						
3) L1 AR-1016-1	5.498	4.657	928094	797801	13.809	16.119
4) L1 AR-1016-2	5.523	4.675	1180261	628587	12.316	9.081 #
5) L1 AR-1016-3	5.585	4.853	575065	432510	9.614	11.628
6) L1 AR-1016-4	5.680	4.894	495567	17511896	10.342	557.309 #
7) L1 AR-1016-5	5.978	5.107	12537039	9924836	247.405	242.753
8) L2 AR-1221-1	4.533	3.783	73823	68470	3.139	3.453
9) L2 AR-1221-2	4.634	3.873	1174097	1048829	66.083	70.760
10) L2 AR-1221-3	4.701	3.947	456053	269540	8.475	5.975 #
11) L3 AR-1232-1	4.701	3.947	456053	269540	10.275	7.313 #
12) L3 AR-1232-2	5.229	4.675	497428	628587	21.996	19.679
13) L3 AR-1232-3	5.523	4.853	1180261	432510	26.875	25.944
14) L3 AR-1232-4	5.680	4.934	495567	5459315	22.389	338.539 #
15) L3 AR-1232-5	5.773	5.107	21339622	9924836	1218.917	561.949 #
16) L4 AR-1242-1	5.498	4.657	928094	797801	16.576	19.477
17) L4 AR-1242-2	5.523	4.675	1180261	628587	14.785	11.008 #
18) L4 AR-1242-3	5.585	4.853	575065	432510	11.580	14.012
19) L4 AR-1242-4	5.680	4.934	495567	5459315	12.365	168.046 #
20) L4 AR-1242-5	6.425	5.460	11926523	41200246	268.232	1102.446 #
21) L5 AR-1248-1	5.498	4.657	928094	797801	22.254	25.733
22) L5 AR-1248-2	5.773	4.894	21339622	17511896	335.665	382.962
23) L5 AR-1248-3	5.978	4.934	12537039	5459315	181.281	114.515 #
24) L5 AR-1248-4	6.382	5.107	17888289	9924836	235.887	179.709
25) L5 AR-1248-5	6.425	5.500	11926523	4840526	161.621	98.443 #
26) L6 AR-1254-1	6.357	5.460	34457661	41200246	436.768	510.168
27) L6 AR-1254-2	6.577	5.608	54618838	36085209	451.310	504.247
28) L6 AR-1254-3	6.944	6.012	57056544	56397885	465.806	506.230
29) L6 AR-1254-4	7.231	6.242	42102699	30810288	477.832	500.920
30) L6 AR-1254-5	7.652	6.660	45727814	47515814	452.031	501.200
31) L7 AR-1260-1	7.109	6.144	23762867	27756752	249.279	357.946 #
32) L7 AR-1260-2	7.367	6.332	27564425	22213217	244.916	247.093
33) L7 AR-1260-3	7.712f	6.484	6496424	22413172	80.682	263.962 #
34) L7 AR-1260-4	7.941f	6.958	18168037	2327413	187.151	32.505 #
35) L7 AR-1260-5	8.271	7.201	6463270	5615915	36.341	36.530
36) L8 AR-1262-1	7.712f	0.000	6496424	0	55.063	N.D. #
37) L8 AR-1262-2	8.271	6.958	6463270	2327413	32.090	25.128
38) L8 AR-1262-3	8.597	7.486	4727144	119642	33.991	1.642 #
39) L8 AR-1262-4	8.704f	7.548	139502	5108873	1.815	39.065 #
40) L8 AR-1262-5	9.326	8.046	87796	188120	1.228	3.171 #
41) L9 AR-1268-1	8.597	7.486	4727144	119642	19.341	0.553 #

Data Path : Z:\pestpcbsrv\HPCHEM1\ECD\_P\Data\PP020223\  
 Data File : PP055240.D  
 Signal(s) : Signal #1: ECD1A.ch Signal #2: ECD2B.ch  
 Acq On : 02 Feb 2023 09:46  
 Operator : YP\AJ  
 Sample : AR1254CCC500  
 Misc :  
 ALS Vial : 6 Sample Multiplier: 1

Instrument :  
 ECD\_P  
 ClientSampleId :

Integration File signal 1: autoint1.e  
 Integration File signal 2: autoint2.e  
 Quant Time: Feb 02 21:01:54 2023  
 Quant Method : Z:\pestpcbsrv\HPCHEM1\ECD\_P\methods\PP012423.M  
 Quant Title : GC EXTRACTABLES  
 QLast Update : Tue Jan 24 03:37:45 2023  
 Response via : Initial Calibration  
 Integrator: ChemStation

Volume Inj. : 2 µl  
 Signal #1 Phase : ZB-MR1 Signal #2 Phase: ZB-MR2  
 Signal #1 Info : 30Mx0.32mmx 0.50µ Signal #2 Info : 30M x 0.32mm x 0.25µm

	Compound	RT#1	RT#2	Resp#1	Resp#2	ng/ml	ng/ml
42)	L9 AR-1268-2	8.704f	7.548	139502	5108873	0.614	26.181 #
43)	L9 AR-1268-3	8.906	7.758	227553	77569	1.139	0.452 #
44)	L9 AR-1268-4	9.326	8.046	87796	188120	1.118	2.949 #
45)	L9 AR-1268-5	9.745	8.334	273640	291381	0.430	0.553 #

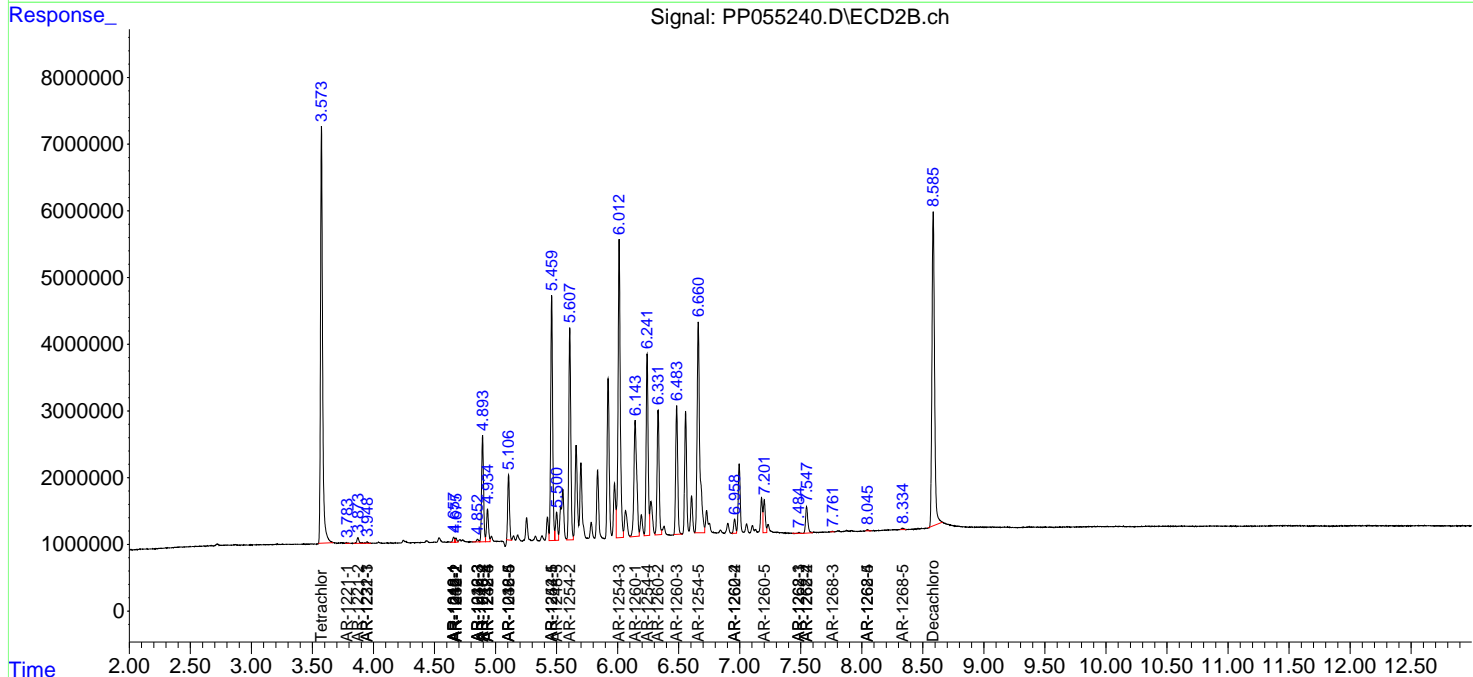
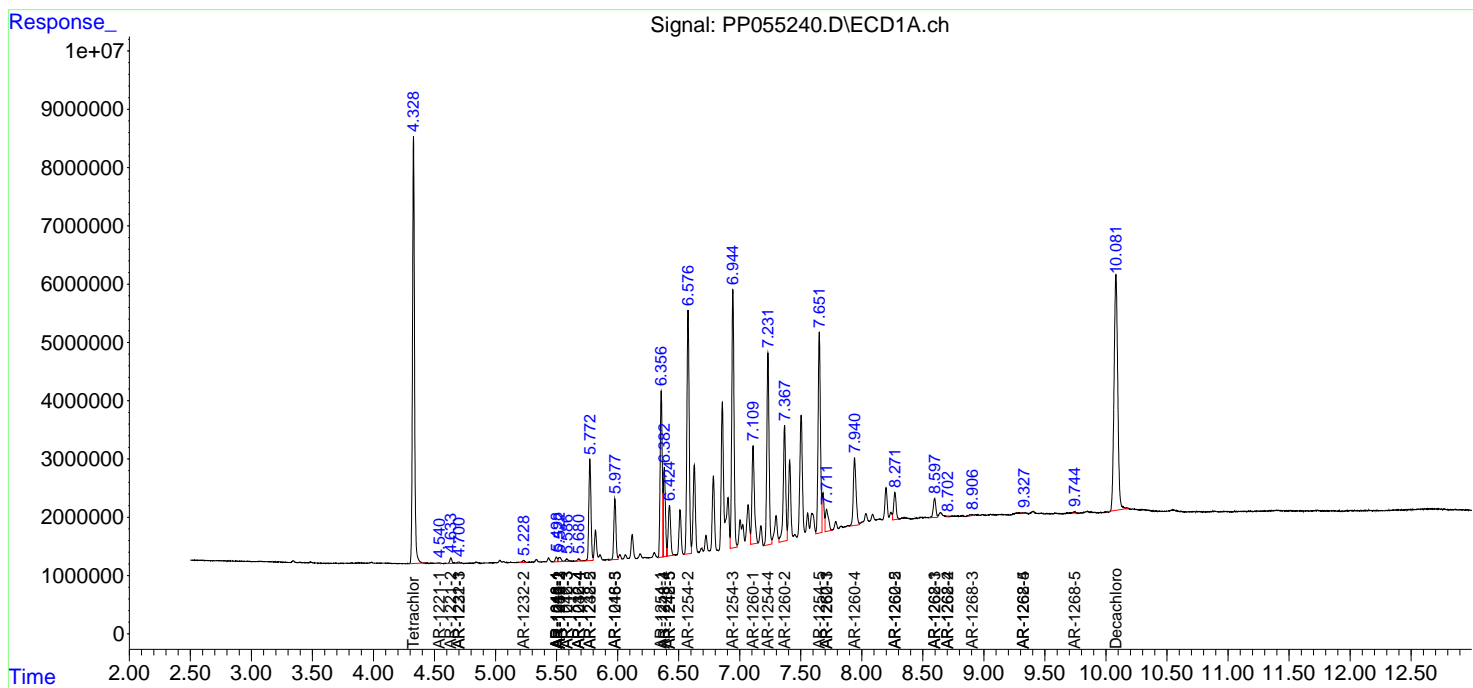
(f)=RT Delta > 1/2 Window (#)=Amounts differ by > 25% (m)=manual int.

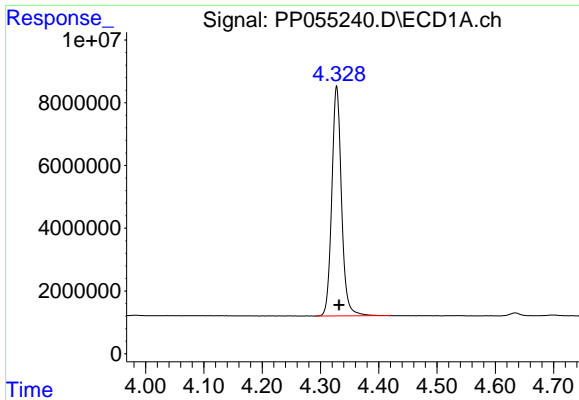
Data Path : Z:\pestpcbsrv\HPCHEM1\ECD\_P\Data\PP020223\  
 Data File : PP055240.D  
 Signal(s) : Signal #1: ECD1A.ch Signal #2: ECD2B.ch  
 Acq On : 02 Feb 2023 09:46  
 Operator : YP\AJ  
 Sample : AR1254CCC500  
 Misc :  
 ALS Vial : 6 Sample Multiplier: 1

Instrument :  
 ECD\_P  
 ClientSampleId :

Integration File signal 1: autoint1.e  
 Integration File signal 2: autoint2.e  
 Quant Time: Feb 02 21:01:54 2023  
 Quant Method : Z:\pestpcbsrv\HPCHEM1\ECD\_P\methods\PP012423.M  
 Quant Title : GC EXTRACTABLES  
 QLast Update : Tue Jan 24 03:37:45 2023  
 Response via : Initial Calibration  
 Integrator: ChemStation

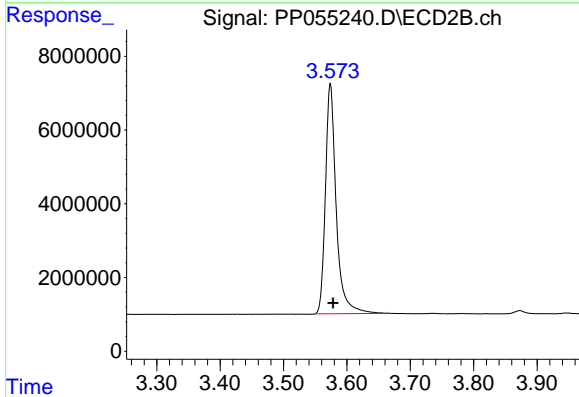
Volume Inj. : 2 µl  
 Signal #1 Phase : ZB-MR1 Signal #2 Phase: ZB-MR2  
 Signal #1 Info : 30Mx0.32mmx 0.50µ Signal #2 Info : 30M x 0.32mm x 0.25µm



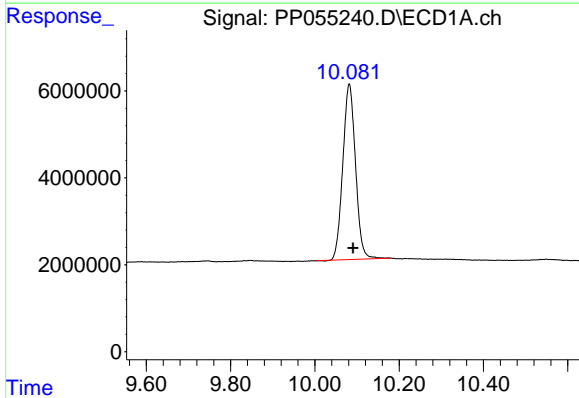


#1 Tetrachloro-m-xylene  
 R.T.: 4.328 min  
 Delta R.T.: -0.004 min  
 Response: 84697339  
 Conc: 48.71 ng/ml

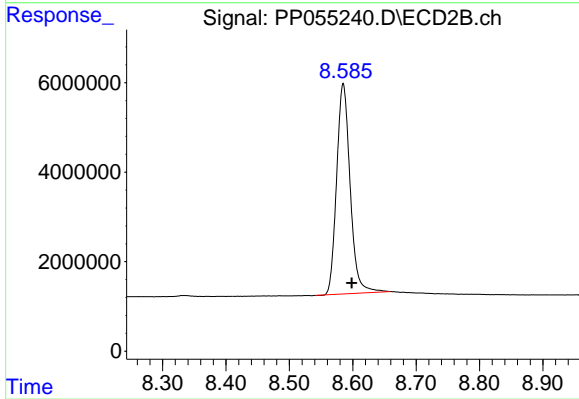
Instrument :  
 ECD\_P  
 ClientSampleId :



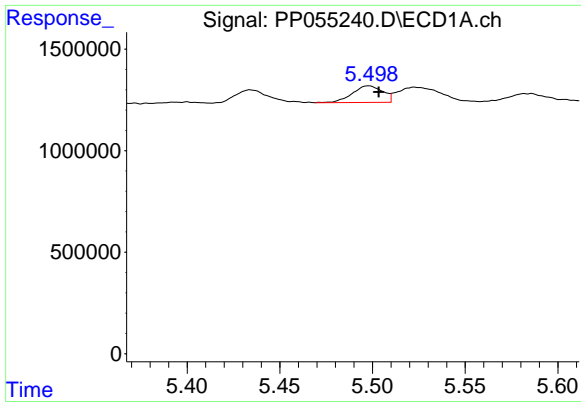
#1 Tetrachloro-m-xylene  
 R.T.: 3.574 min  
 Delta R.T.: -0.004 min  
 Response: 73813068  
 Conc: 49.17 ng/ml



#2 Decachlorobiphenyl  
 R.T.: 10.082 min  
 Delta R.T.: -0.009 min  
 Response: 84292694  
 Conc: 48.68 ng/ml



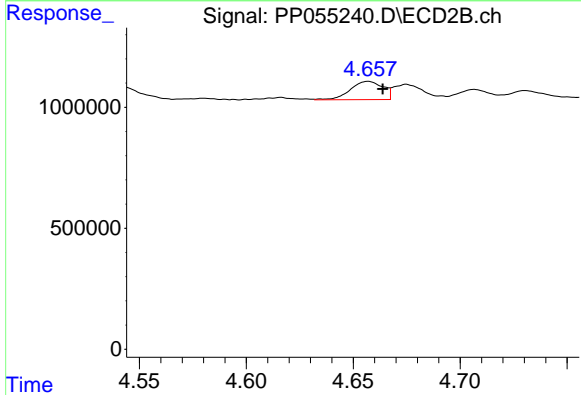
#2 Decachlorobiphenyl  
 R.T.: 8.585 min  
 Delta R.T.: -0.013 min  
 Response: 69688094  
 Conc: 51.60 ng/ml



#3 AR-1016-1

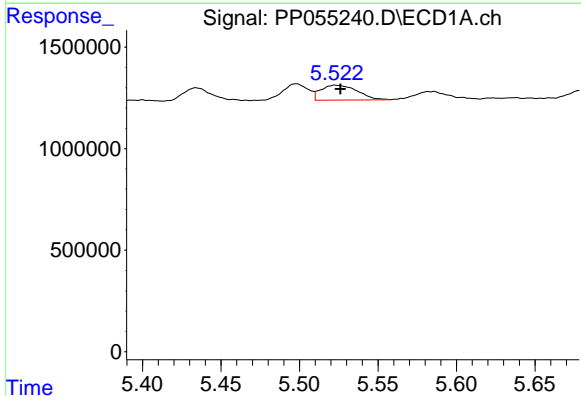
R.T.: 5.498 min  
 Delta R.T.: -0.005 min  
 Response: 928094  
 Conc: 13.81 ng/ml

Instrument :  
 ECD\_P  
 ClientSampleId :



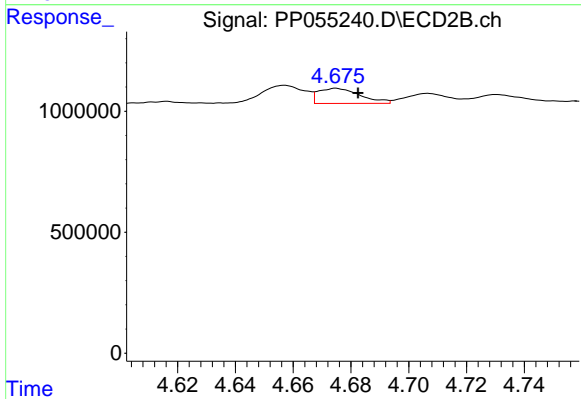
#3 AR-1016-1

R.T.: 4.657 min  
 Delta R.T.: -0.007 min  
 Response: 797801  
 Conc: 16.12 ng/ml



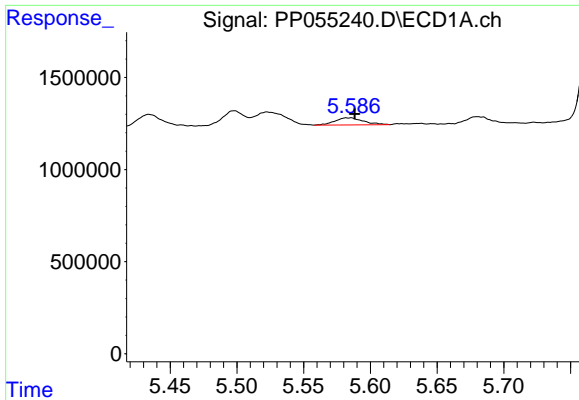
#4 AR-1016-2

R.T.: 5.523 min  
 Delta R.T.: -0.003 min  
 Response: 1180261  
 Conc: 12.32 ng/ml



#4 AR-1016-2

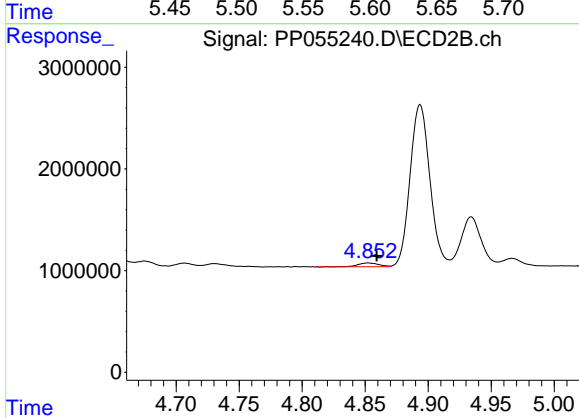
R.T.: 4.675 min  
 Delta R.T.: -0.008 min  
 Response: 628587  
 Conc: 9.08 ng/ml



#5 AR-1016-3

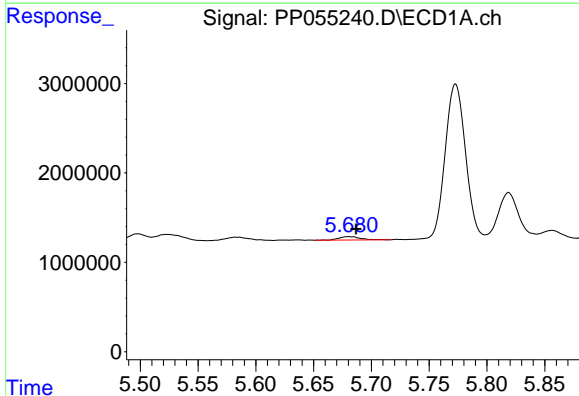
R.T.: 5.585 min  
 Delta R.T.: -0.004 min  
 Response: 575065  
 Conc: 9.61 ng/ml

Instrument :  
 ECD\_P  
 ClientSampleId :



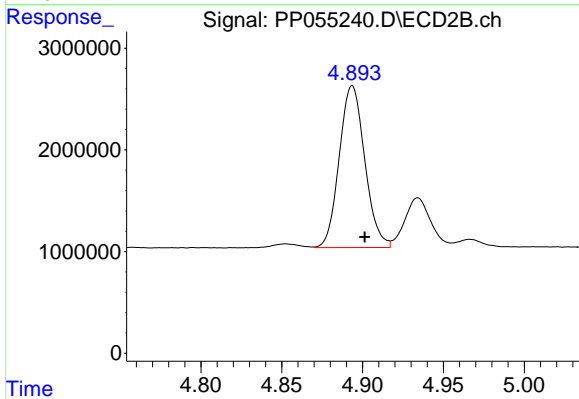
#5 AR-1016-3

R.T.: 4.853 min  
 Delta R.T.: -0.007 min  
 Response: 432510  
 Conc: 11.63 ng/ml



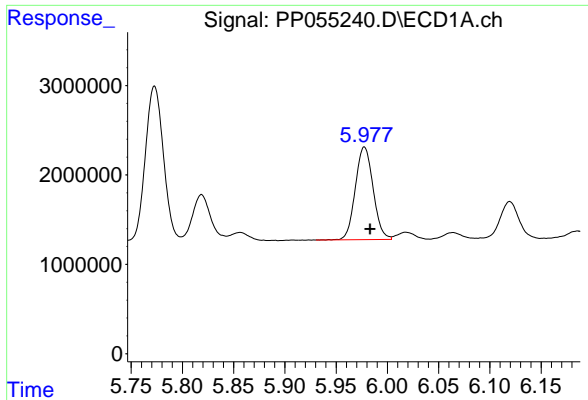
#6 AR-1016-4

R.T.: 5.680 min  
 Delta R.T.: -0.007 min  
 Response: 495567  
 Conc: 10.34 ng/ml



#6 AR-1016-4

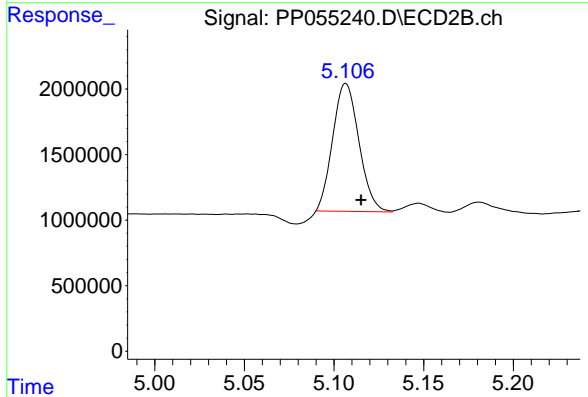
R.T.: 4.894 min  
 Delta R.T.: -0.008 min  
 Response: 17511896  
 Conc: 557.31 ng/ml



#7 AR-1016-5

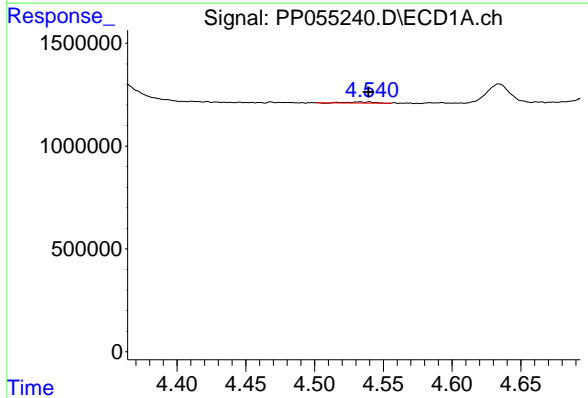
R.T.: 5.978 min  
 Delta R.T.: -0.006 min  
 Response: 12537039  
 Conc: 247.41 ng/ml

Instrument :  
 ECD\_P  
 ClientSampleId :



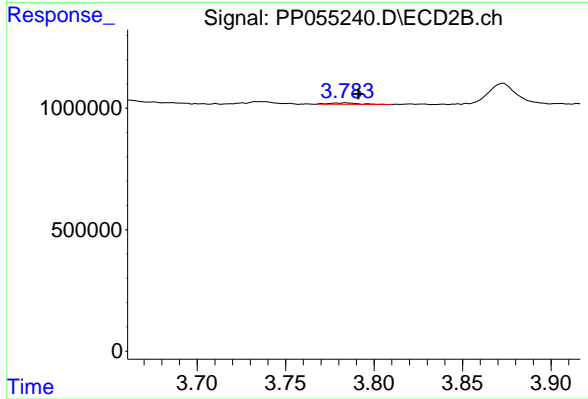
#7 AR-1016-5

R.T.: 5.107 min  
 Delta R.T.: -0.008 min  
 Response: 9924836  
 Conc: 242.75 ng/ml



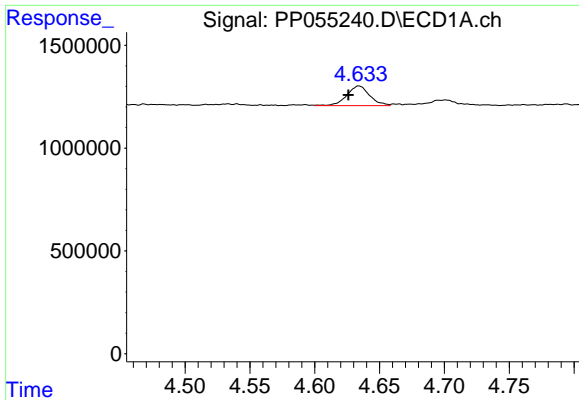
#8 AR-1221-1

R.T.: 4.533 min  
 Delta R.T.: -0.006 min  
 Response: 73823  
 Conc: 3.14 ng/ml



#8 AR-1221-1

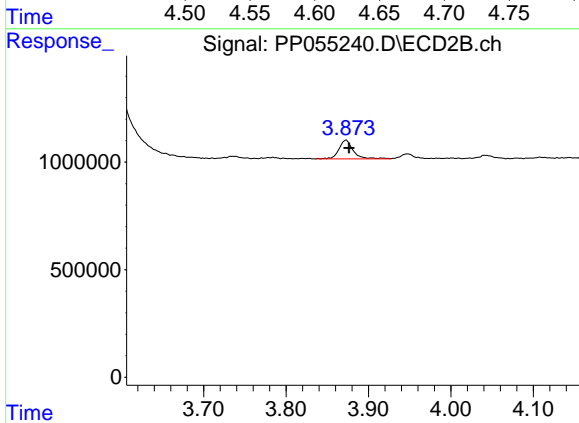
R.T.: 3.783 min  
 Delta R.T.: -0.008 min  
 Response: 68470  
 Conc: 3.45 ng/ml



#9 AR-1221-2

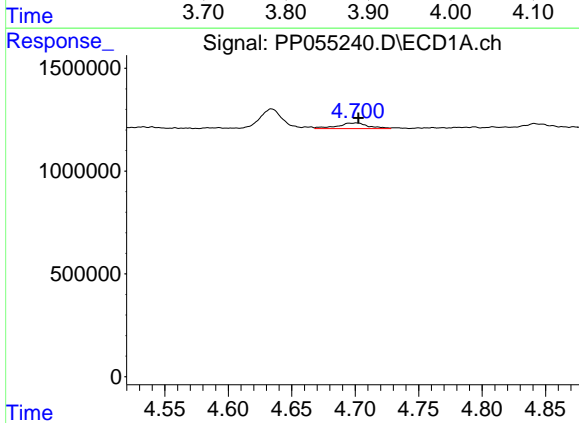
R.T.: 4.634 min  
 Delta R.T.: 0.008 min  
 Response: 1174097  
 Conc: 66.08 ng/ml

Instrument :  
 ECD\_P  
 ClientSampleId :



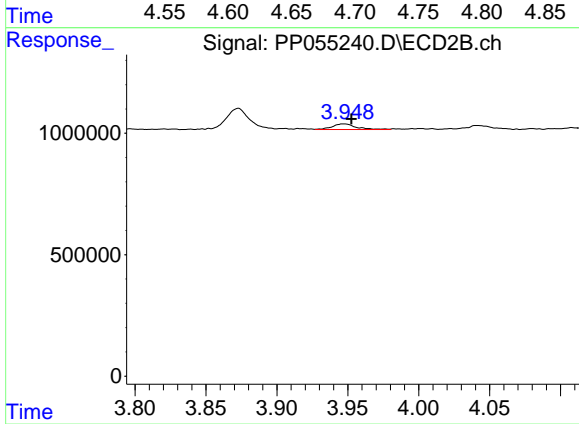
#9 AR-1221-2

R.T.: 3.873 min  
 Delta R.T.: -0.004 min  
 Response: 1048829  
 Conc: 70.76 ng/ml



#10 AR-1221-3

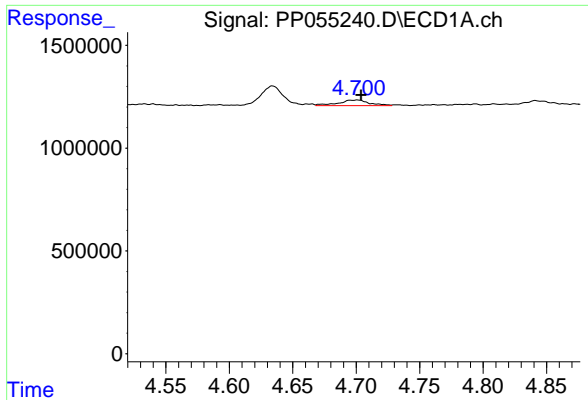
R.T.: 4.701 min  
 Delta R.T.: -0.001 min  
 Response: 456053  
 Conc: 8.48 ng/ml



#10 AR-1221-3

R.T.: 3.947 min  
 Delta R.T.: -0.005 min  
 Response: 269540  
 Conc: 5.97 ng/ml

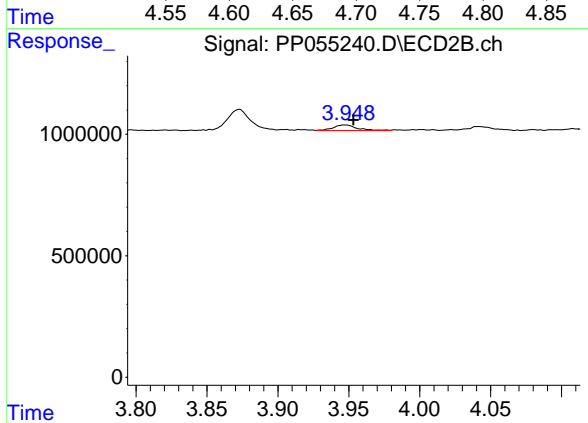




#11 AR-1232-1

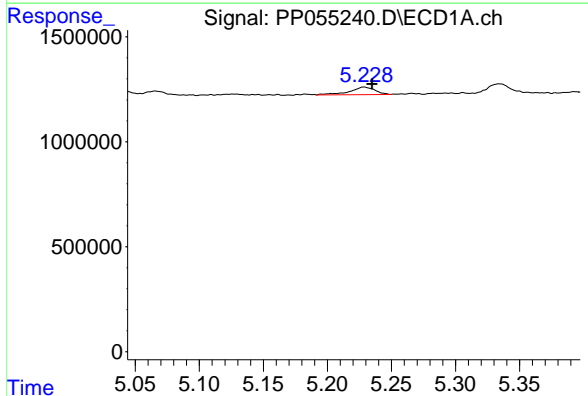
R.T.: 4.701 min  
 Delta R.T.: -0.003 min  
 Response: 456053  
 Conc: 10.28 ng/ml

Instrument :  
 ECD\_P  
 ClientSampleId :



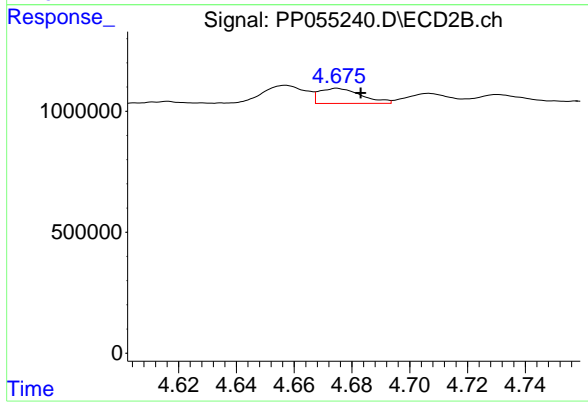
#11 AR-1232-1

R.T.: 3.947 min  
 Delta R.T.: -0.006 min  
 Response: 269540  
 Conc: 7.31 ng/ml



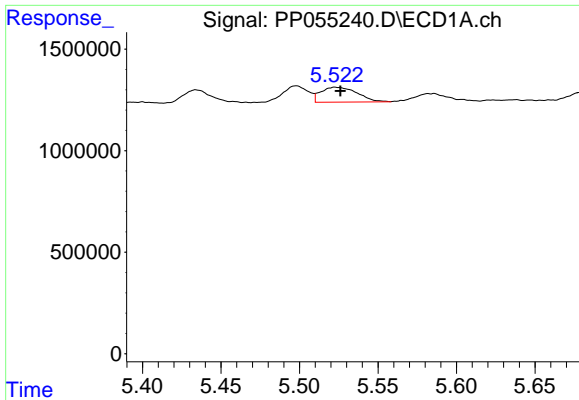
#12 AR-1232-2

R.T.: 5.229 min  
 Delta R.T.: -0.006 min  
 Response: 497428  
 Conc: 22.00 ng/ml



#12 AR-1232-2

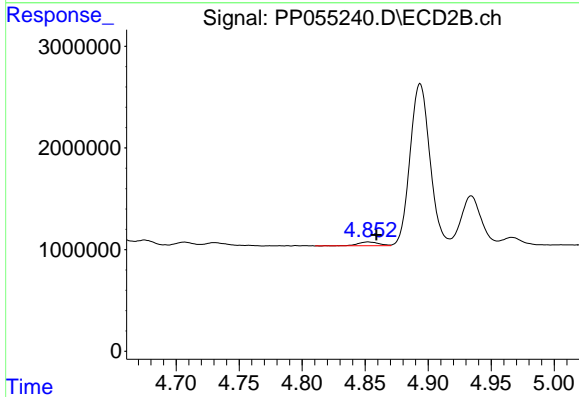
R.T.: 4.675 min  
 Delta R.T.: -0.008 min  
 Response: 628587  
 Conc: 19.68 ng/ml



#13 AR-1232-3

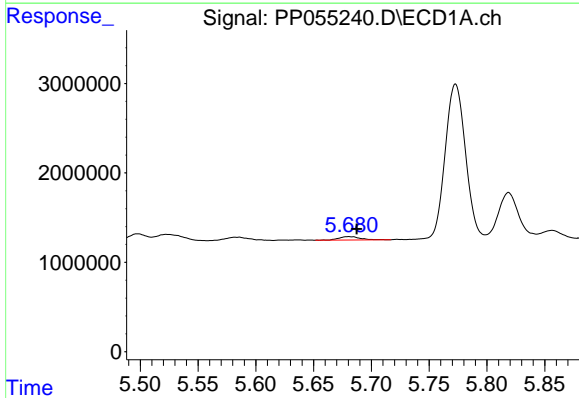
R.T.: 5.523 min  
 Delta R.T.: -0.003 min  
 Response: 1180261  
 Conc: 26.87 ng/ml

Instrument :  
 ECD\_P  
 ClientSampleId :



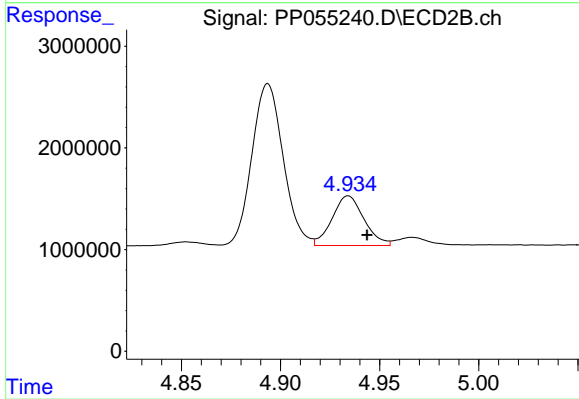
#13 AR-1232-3

R.T.: 4.853 min  
 Delta R.T.: -0.006 min  
 Response: 432510  
 Conc: 25.94 ng/ml



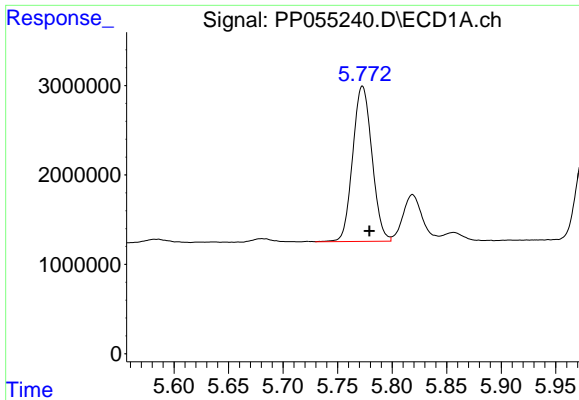
#14 AR-1232-4

R.T.: 5.680 min  
 Delta R.T.: -0.007 min  
 Response: 495567  
 Conc: 22.39 ng/ml



#14 AR-1232-4

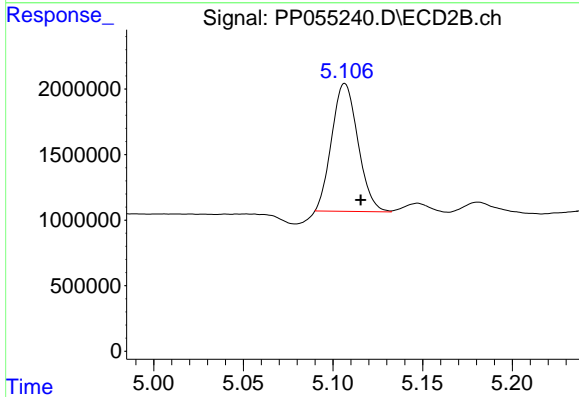
R.T.: 4.934 min  
 Delta R.T.: -0.009 min  
 Response: 5459315  
 Conc: 338.54 ng/ml



#15 AR-1232-5

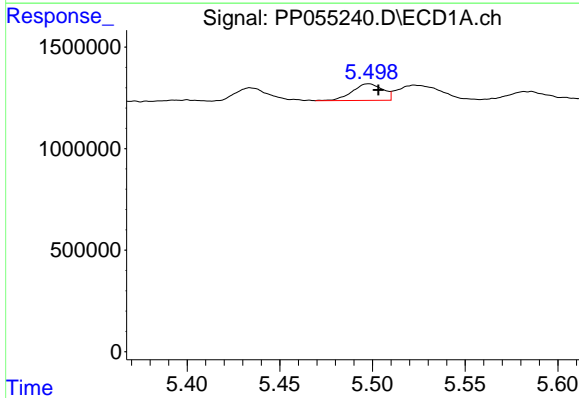
R.T.: 5.773 min  
 Delta R.T.: -0.006 min  
 Response: 21339622  
 Conc: 1218.92 ng/ml

Instrument :  
 ECD\_P  
 ClientSampleId :



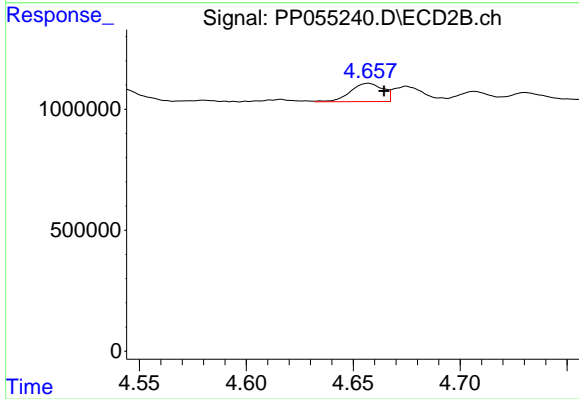
#15 AR-1232-5

R.T.: 5.107 min  
 Delta R.T.: -0.009 min  
 Response: 9924836  
 Conc: 561.95 ng/ml



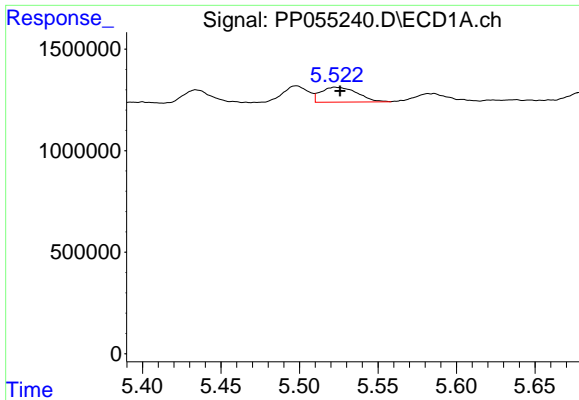
#16 AR-1242-1

R.T.: 5.498 min  
 Delta R.T.: -0.005 min  
 Response: 928094  
 Conc: 16.58 ng/ml



#16 AR-1242-1

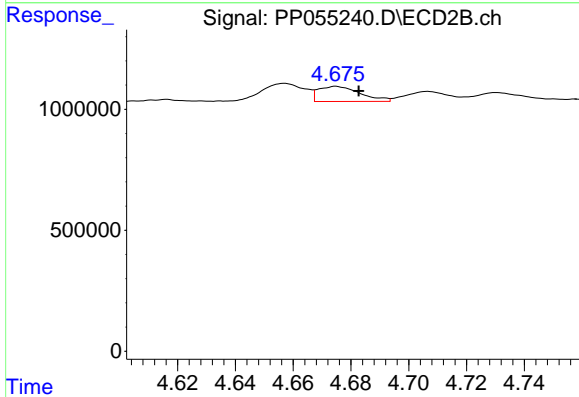
R.T.: 4.657 min  
 Delta R.T.: -0.007 min  
 Response: 797801  
 Conc: 19.48 ng/ml



#17 AR-1242-2

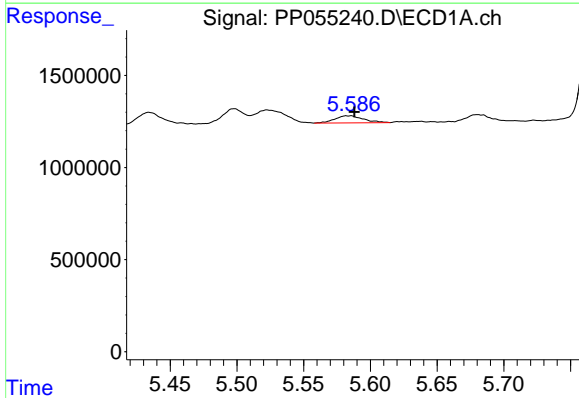
R.T.: 5.523 min  
 Delta R.T.: -0.003 min  
 Response: 1180261  
 Conc: 14.78 ng/ml

Instrument :  
 ECD\_P  
 ClientSampleId :



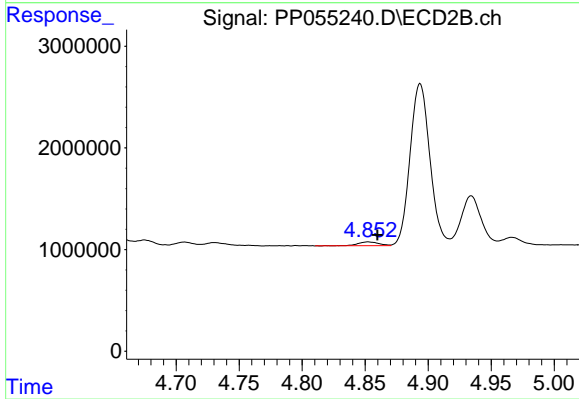
#17 AR-1242-2

R.T.: 4.675 min  
 Delta R.T.: -0.008 min  
 Response: 628587  
 Conc: 11.01 ng/ml



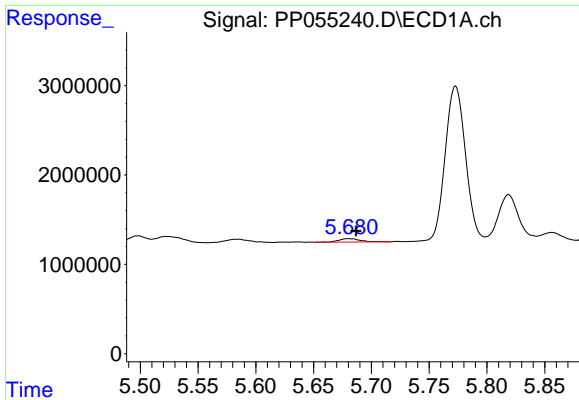
#18 AR-1242-3

R.T.: 5.585 min  
 Delta R.T.: -0.003 min  
 Response: 575065  
 Conc: 11.58 ng/ml



#18 AR-1242-3

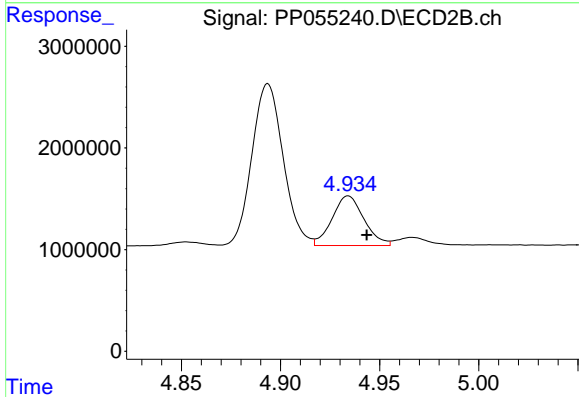
R.T.: 4.853 min  
 Delta R.T.: -0.007 min  
 Response: 432510  
 Conc: 14.01 ng/ml



#19 AR-1242-4

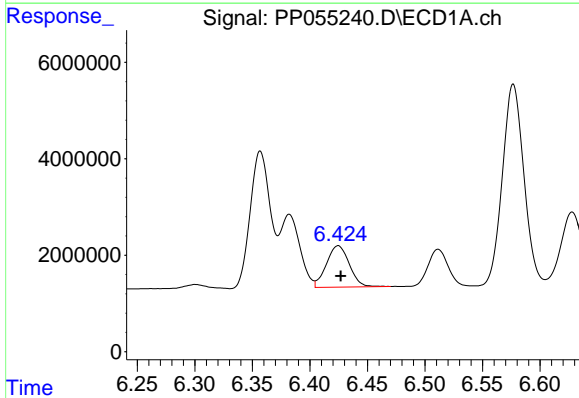
R.T.: 5.680 min  
 Delta R.T.: -0.007 min  
 Response: 495567  
 Conc: 12.37 ng/ml

Instrument :  
 ECD\_P  
 ClientSampleId :



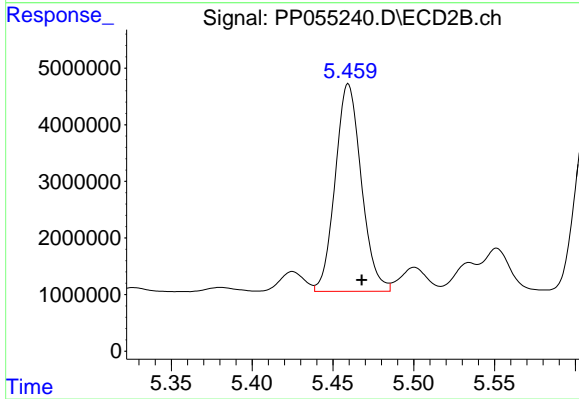
#19 AR-1242-4

R.T.: 4.934 min  
 Delta R.T.: -0.009 min  
 Response: 5459315  
 Conc: 168.05 ng/ml



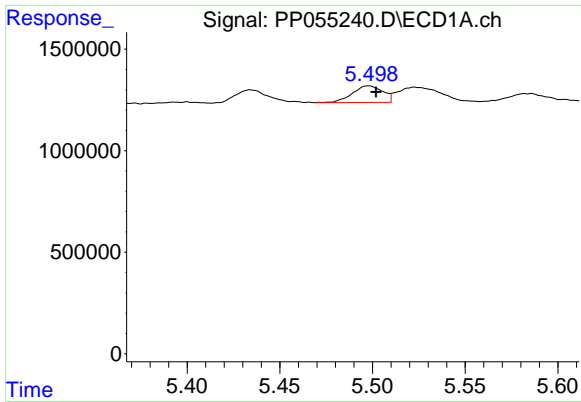
#20 AR-1242-5

R.T.: 6.425 min  
 Delta R.T.: -0.002 min  
 Response: 11926523  
 Conc: 268.23 ng/ml



#20 AR-1242-5

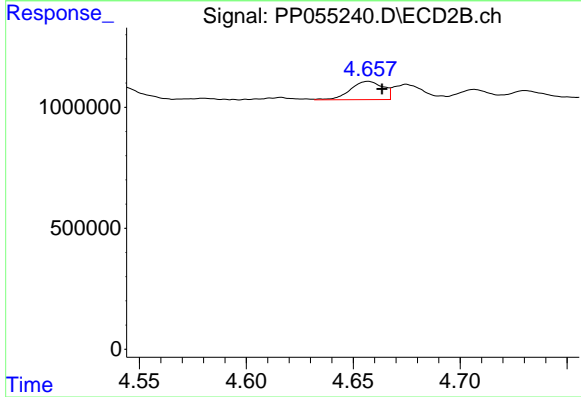
R.T.: 5.460 min  
 Delta R.T.: -0.008 min  
 Response: 41200246  
 Conc: 1102.45 ng/ml



#21 AR-1248-1

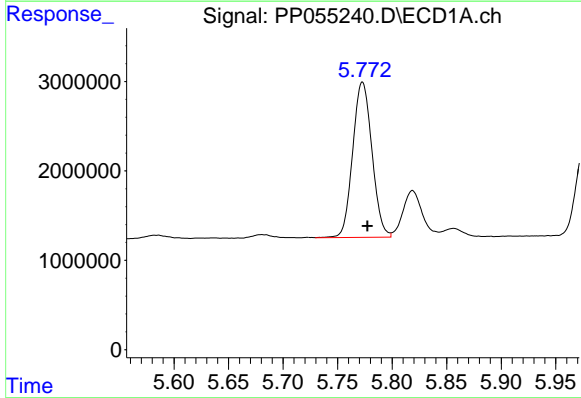
R.T.: 5.498 min  
 Delta R.T.: -0.004 min  
 Response: 928094  
 Conc: 22.25 ng/ml

Instrument :  
 ECD\_P  
 ClientSampleId :



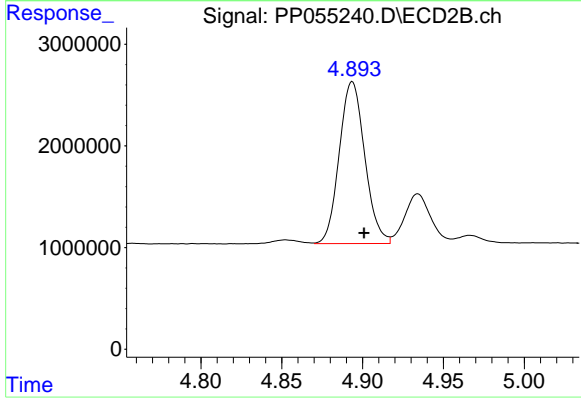
#21 AR-1248-1

R.T.: 4.657 min  
 Delta R.T.: -0.006 min  
 Response: 797801  
 Conc: 25.73 ng/ml



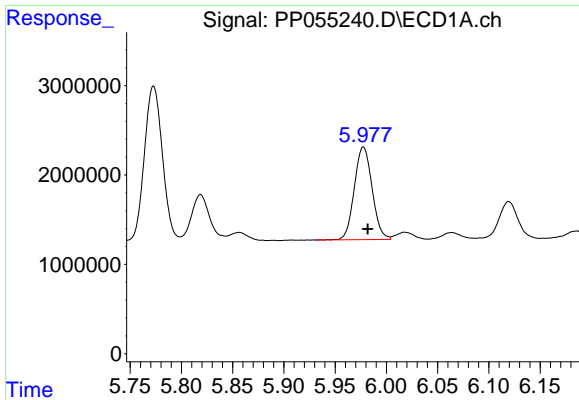
#22 AR-1248-2

R.T.: 5.773 min  
 Delta R.T.: -0.005 min  
 Response: 21339622  
 Conc: 335.66 ng/ml



#22 AR-1248-2

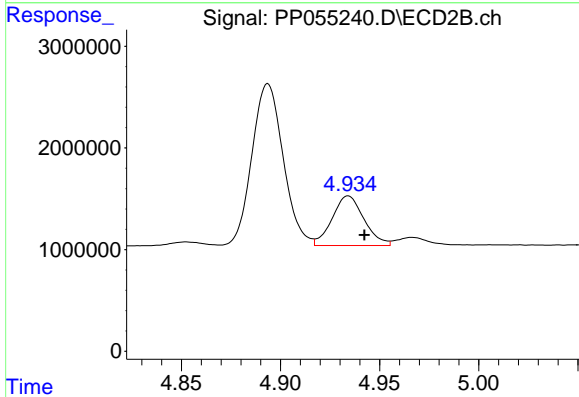
R.T.: 4.894 min  
 Delta R.T.: -0.007 min  
 Response: 17511896  
 Conc: 382.96 ng/ml



#23 AR-1248-3

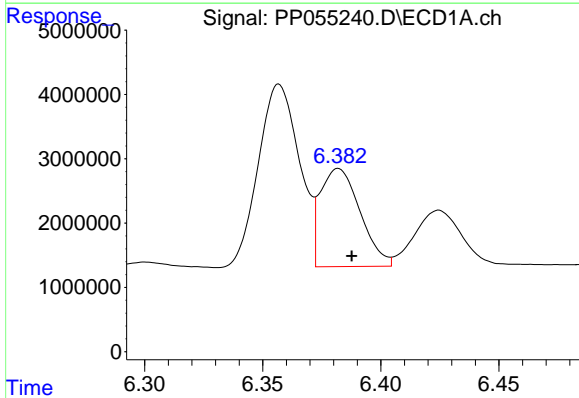
R.T.: 5.978 min  
 Delta R.T.: -0.004 min  
 Response: 12537039  
 Conc: 181.28 ng/ml

Instrument :  
 ECD\_P  
 ClientSampleId :



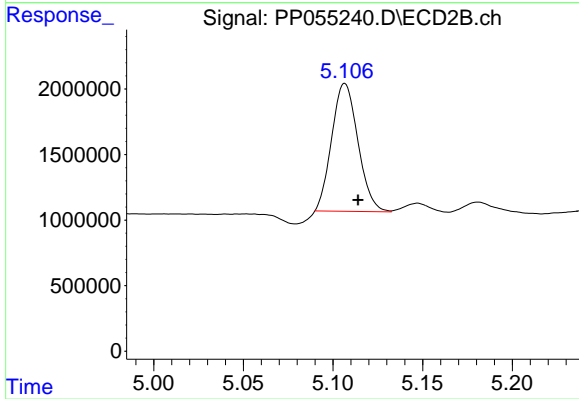
#23 AR-1248-3

R.T.: 4.934 min  
 Delta R.T.: -0.008 min  
 Response: 5459315  
 Conc: 114.52 ng/ml



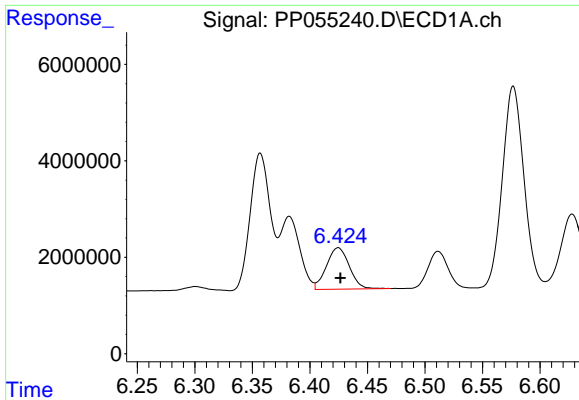
#24 AR-1248-4

R.T.: 6.382 min  
 Delta R.T.: -0.006 min  
 Response: 17888289  
 Conc: 235.89 ng/ml



#24 AR-1248-4

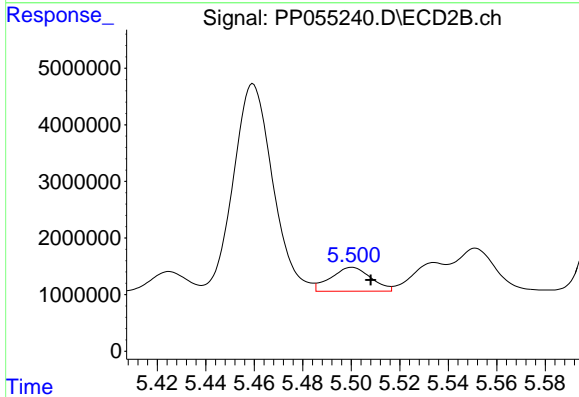
R.T.: 5.107 min  
 Delta R.T.: -0.007 min  
 Response: 9924836  
 Conc: 179.71 ng/ml



#25 AR-1248-5

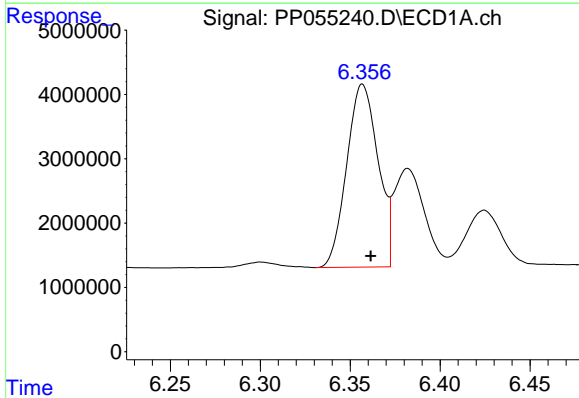
R.T.: 6.425 min  
 Delta R.T.: -0.002 min  
 Response: 11926523  
 Conc: 161.62 ng/ml

Instrument :  
 ECD\_P  
 ClientSampleId :



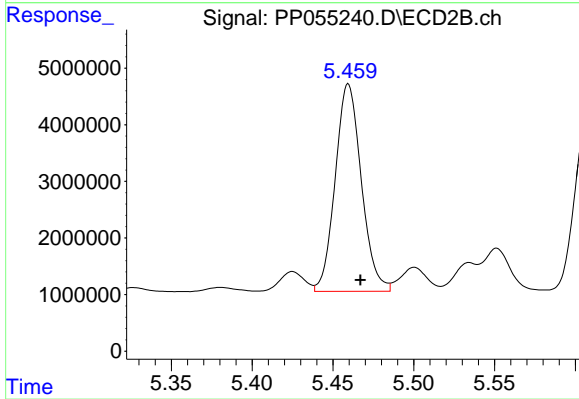
#25 AR-1248-5

R.T.: 5.500 min  
 Delta R.T.: -0.008 min  
 Response: 4840526  
 Conc: 98.44 ng/ml



#26 AR-1254-1

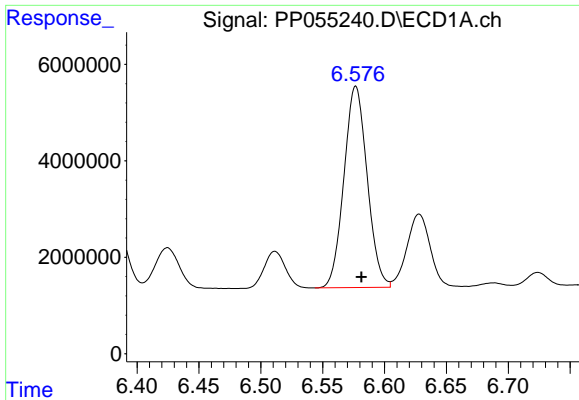
R.T.: 6.357 min  
 Delta R.T.: -0.004 min  
 Response: 34457661  
 Conc: 436.77 ng/ml



#26 AR-1254-1

R.T.: 5.460 min  
 Delta R.T.: -0.007 min  
 Response: 41200246  
 Conc: 510.17 ng/ml

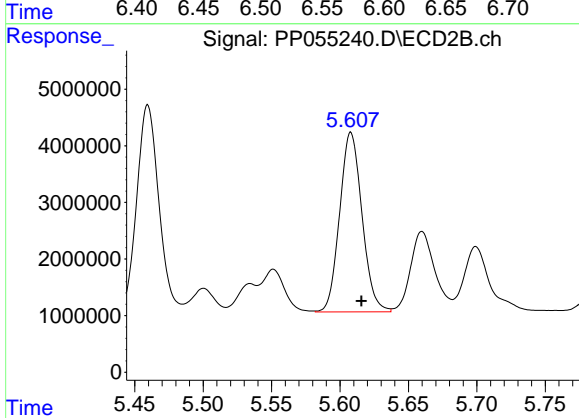




#27 AR-1254-2

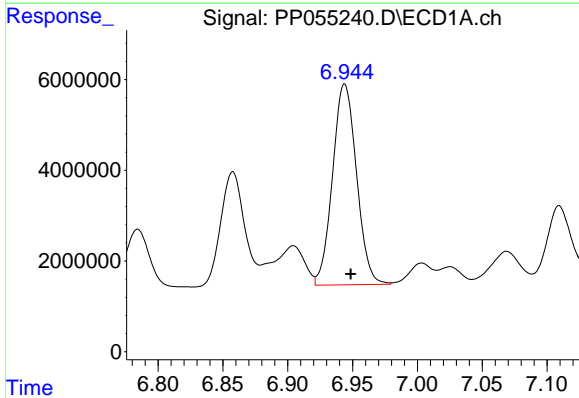
R.T.: 6.577 min  
Delta R.T.: -0.005 min  
Response: 54618838  
Conc: 451.31 ng/ml

Instrument :  
ECD\_P  
ClientSampleId :



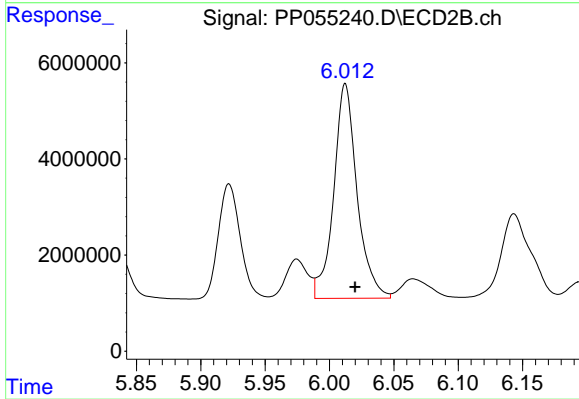
#27 AR-1254-2

R.T.: 5.608 min  
Delta R.T.: -0.008 min  
Response: 36085209  
Conc: 504.25 ng/ml



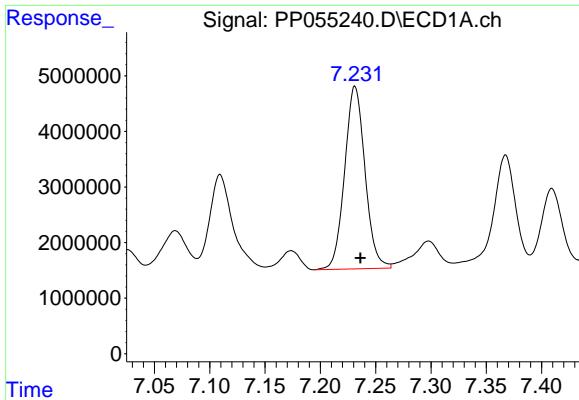
#28 AR-1254-3

R.T.: 6.944 min  
Delta R.T.: -0.005 min  
Response: 57056544  
Conc: 465.81 ng/ml



#28 AR-1254-3

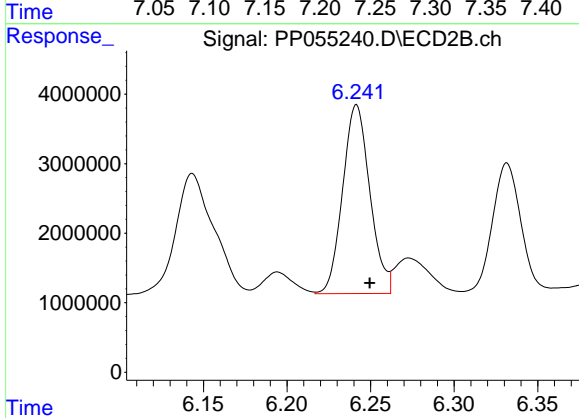
R.T.: 6.012 min  
Delta R.T.: -0.007 min  
Response: 56397885  
Conc: 506.23 ng/ml



#29 AR-1254-4

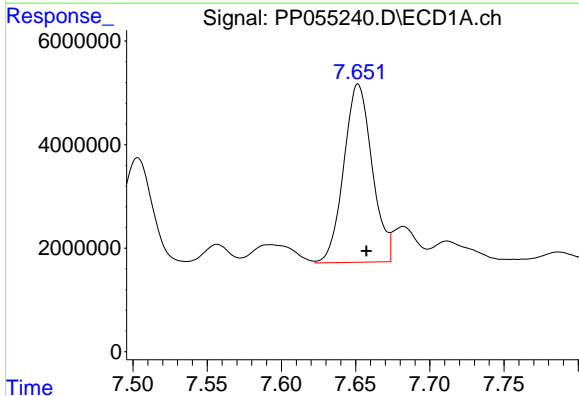
R.T.: 7.231 min  
 Delta R.T.: -0.005 min  
 Response: 42102699  
 Conc: 477.83 ng/ml

Instrument :  
 ECD\_P  
 ClientSampleId :



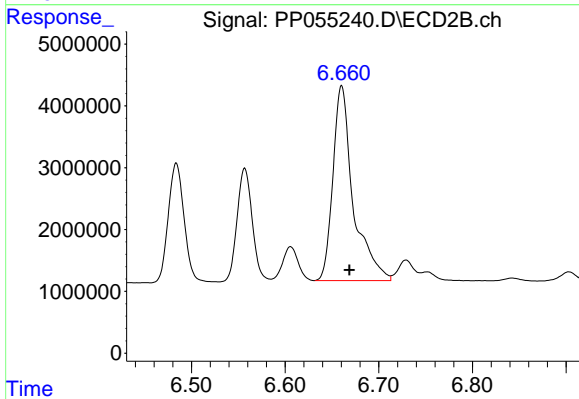
#29 AR-1254-4

R.T.: 6.242 min  
 Delta R.T.: -0.008 min  
 Response: 30810288  
 Conc: 500.92 ng/ml



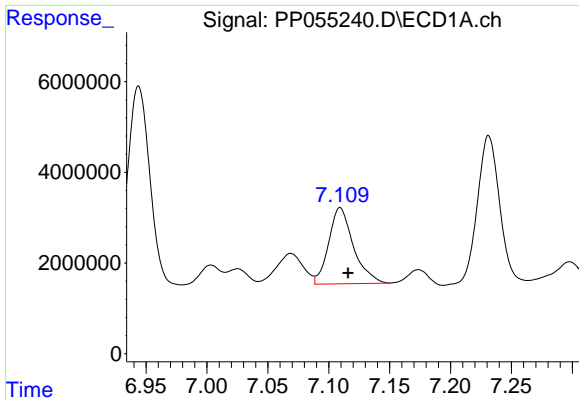
#30 AR-1254-5

R.T.: 7.652 min  
 Delta R.T.: -0.005 min  
 Response: 45727814  
 Conc: 452.03 ng/ml



#30 AR-1254-5

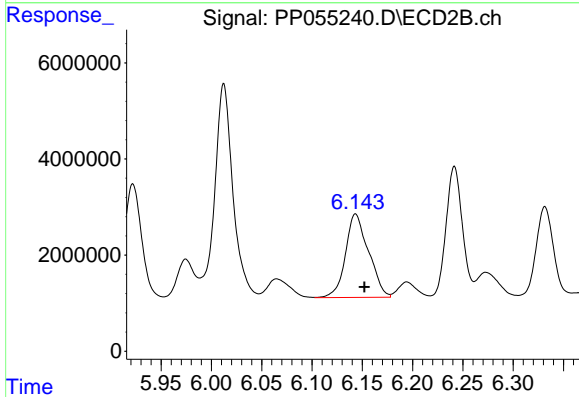
R.T.: 6.660 min  
 Delta R.T.: -0.008 min  
 Response: 47515814  
 Conc: 501.20 ng/ml



#31 AR-1260-1

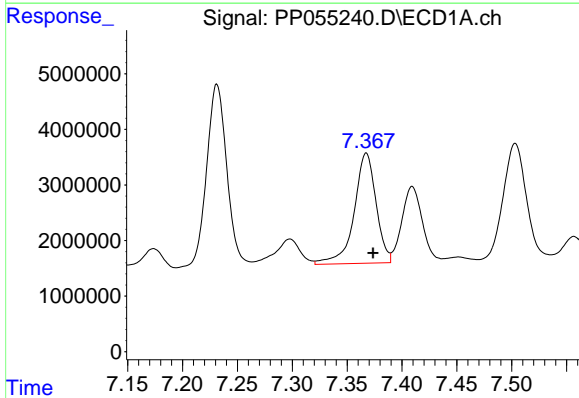
R.T.: 7.109 min  
 Delta R.T.: -0.006 min  
 Response: 23762867  
 Conc: 249.28 ng/ml

Instrument :  
 ECD\_P  
 ClientSampleId :



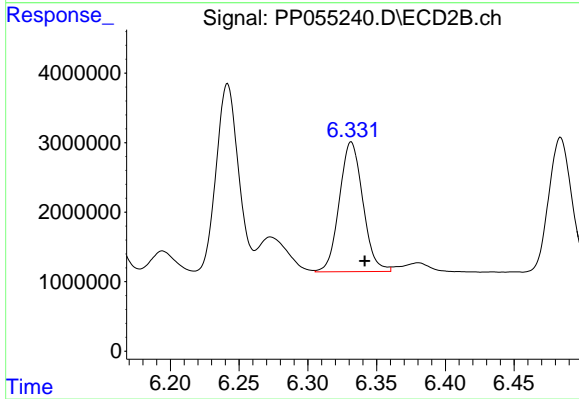
#31 AR-1260-1

R.T.: 6.144 min  
 Delta R.T.: -0.009 min  
 Response: 27756752  
 Conc: 357.95 ng/ml



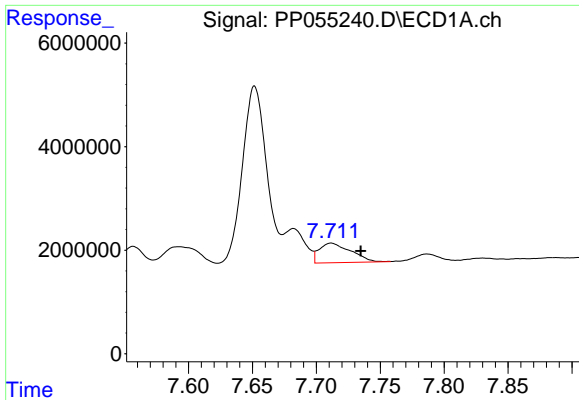
#32 AR-1260-2

R.T.: 7.367 min  
 Delta R.T.: -0.006 min  
 Response: 27564425  
 Conc: 244.92 ng/ml



#32 AR-1260-2

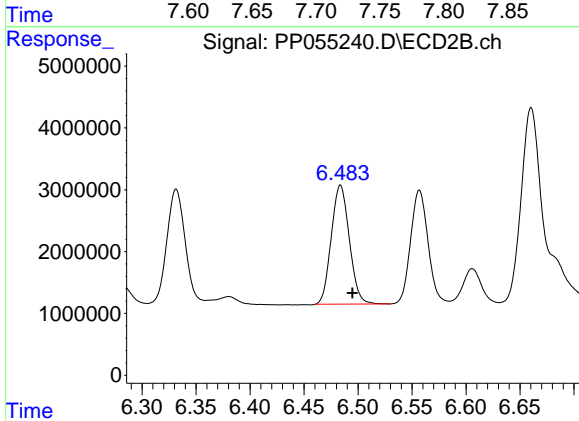
R.T.: 6.332 min  
 Delta R.T.: -0.010 min  
 Response: 22213217  
 Conc: 247.09 ng/ml



#33 AR-1260-3

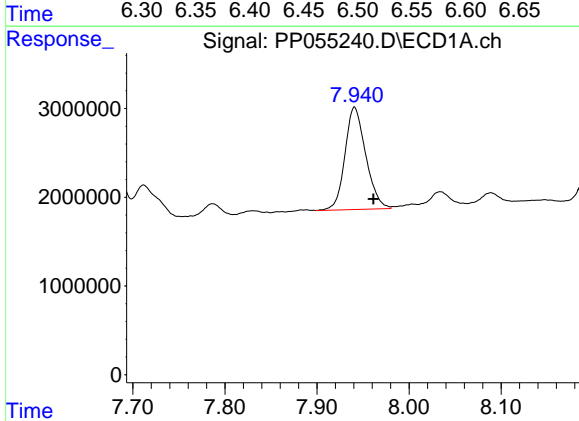
R.T.: 7.712 min  
 Delta R.T.: -0.023 min  
 Response: 6496424  
 Conc: 80.68 ng/ml

Instrument :  
 ECD\_P  
 ClientSampleId :



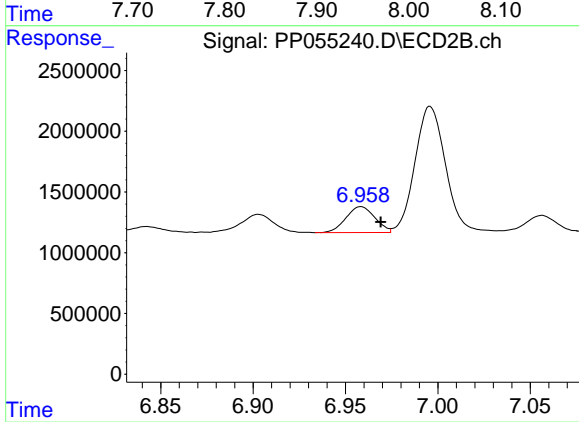
#33 AR-1260-3

R.T.: 6.484 min  
 Delta R.T.: -0.011 min  
 Response: 22413172  
 Conc: 263.96 ng/ml



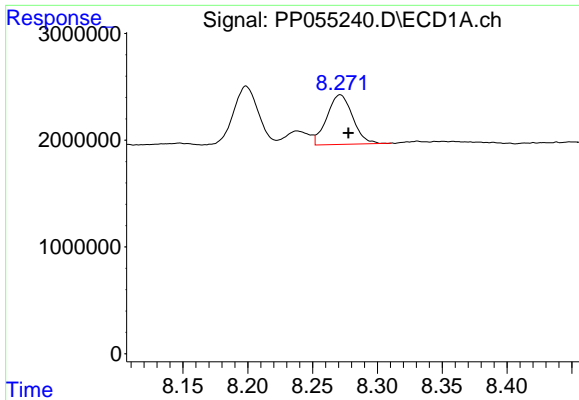
#34 AR-1260-4

R.T.: 7.941 min  
 Delta R.T.: -0.021 min  
 Response: 18168037  
 Conc: 187.15 ng/ml



#34 AR-1260-4

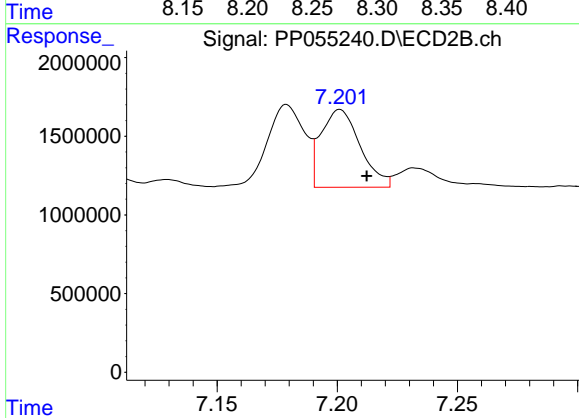
R.T.: 6.958 min  
 Delta R.T.: -0.011 min  
 Response: 2327413  
 Conc: 32.50 ng/ml



#35 AR-1260-5

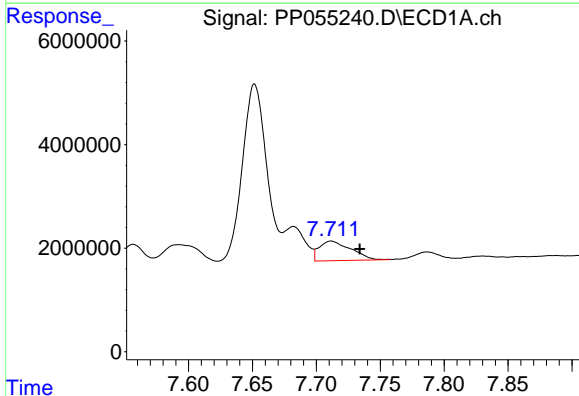
R.T.: 8.271 min  
 Delta R.T.: -0.006 min  
 Response: 6463270  
 Conc: 36.34 ng/ml

Instrument :  
 ECD\_P  
 ClientSampleId :



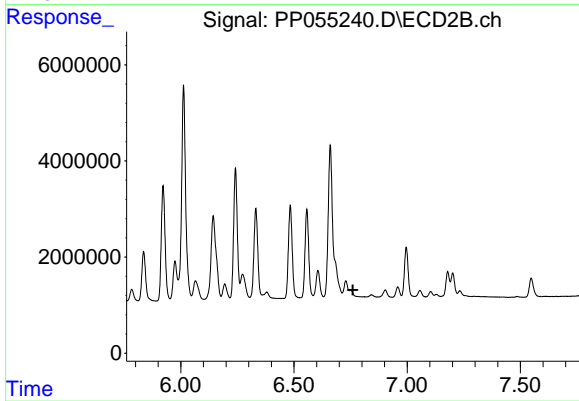
#35 AR-1260-5

R.T.: 7.201 min  
 Delta R.T.: -0.011 min  
 Response: 5615915  
 Conc: 36.53 ng/ml



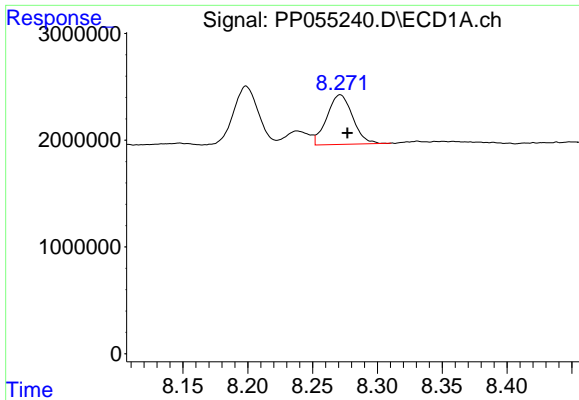
#36 AR-1262-1

R.T.: 7.712 min  
 Delta R.T.: -0.022 min  
 Response: 6496424  
 Conc: 55.06 ng/ml



#36 AR-1262-1

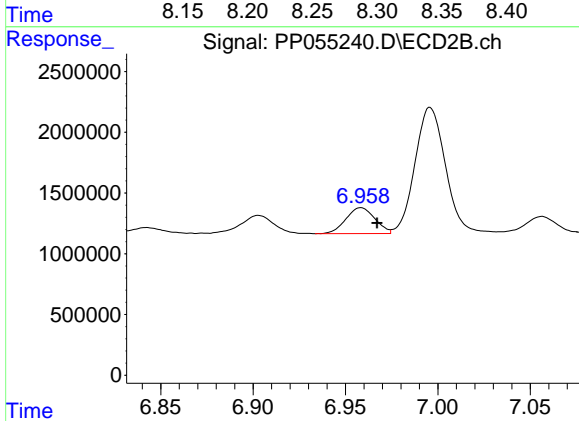
R.T.: 0.000 min  
 Exp R.T. : 6.760 min  
 Response: 0  
 Conc: N.D.



#37 AR-1262-2

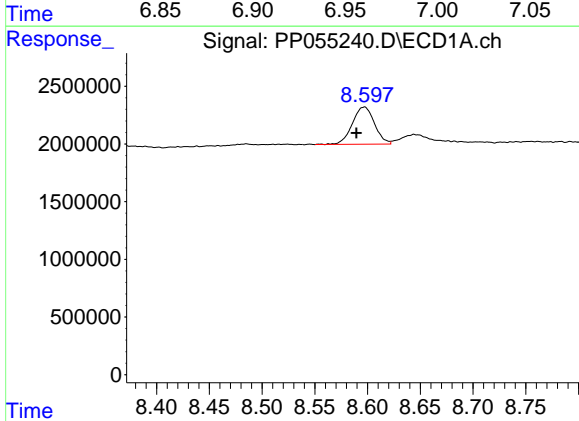
R.T.: 8.271 min  
 Delta R.T.: -0.006 min  
 Response: 6463270  
 Conc: 32.09 ng/ml

Instrument :  
 ECD\_P  
 ClientSampleId :



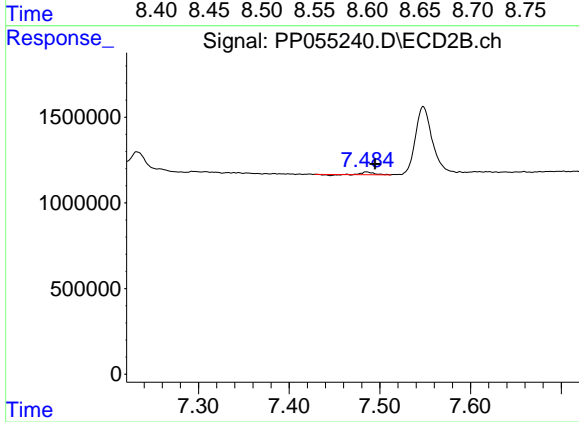
#37 AR-1262-2

R.T.: 6.958 min  
 Delta R.T.: -0.009 min  
 Response: 2327413  
 Conc: 25.13 ng/ml



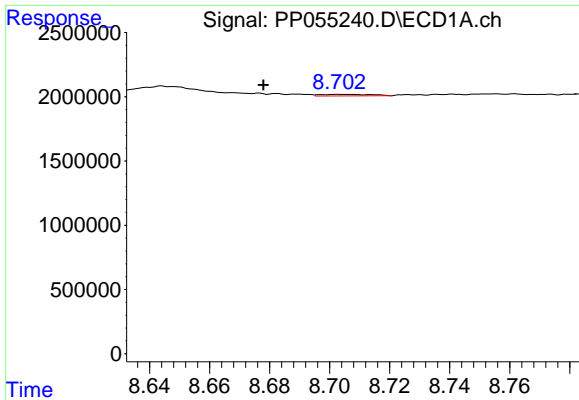
#38 AR-1262-3

R.T.: 8.597 min  
 Delta R.T.: 0.007 min  
 Response: 4727144  
 Conc: 33.99 ng/ml



#38 AR-1262-3

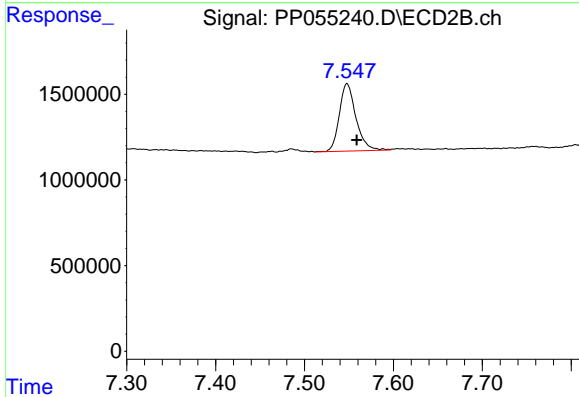
R.T.: 7.486 min  
 Delta R.T.: -0.009 min  
 Response: 119642  
 Conc: 1.64 ng/ml



#39 AR-1262-4

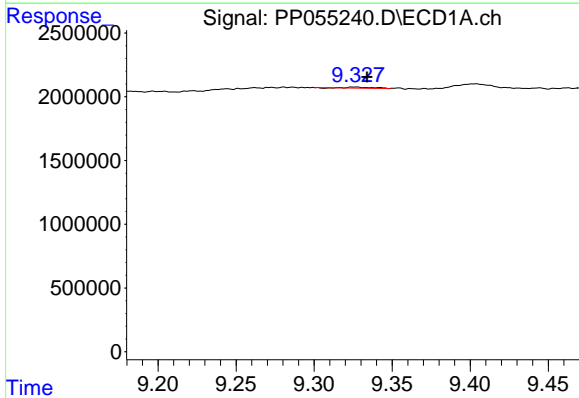
R.T.: 8.704 min  
 Delta R.T.: 0.026 min  
 Response: 139502  
 Conc: 1.81 ng/ml

Instrument :  
 ECD\_P  
 ClientSampleId :



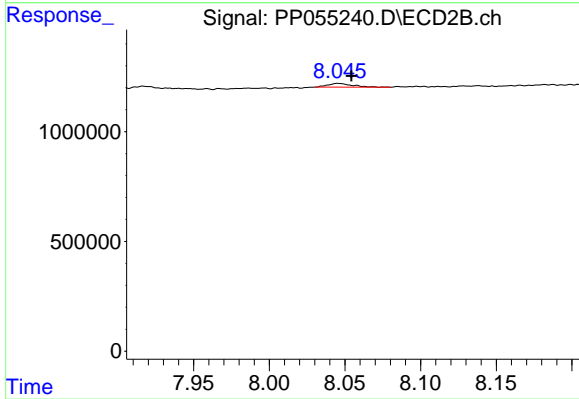
#39 AR-1262-4

R.T.: 7.548 min  
 Delta R.T.: -0.011 min  
 Response: 5108873  
 Conc: 39.06 ng/ml



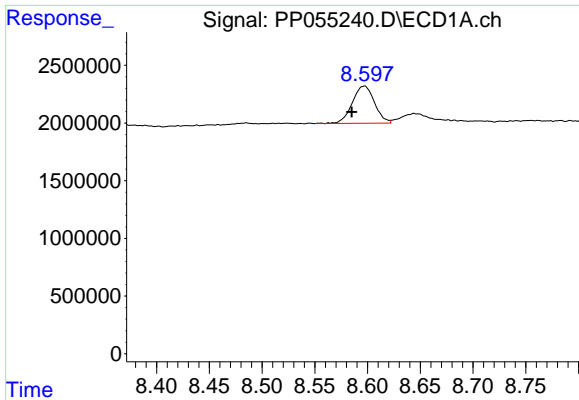
#40 AR-1262-5

R.T.: 9.326 min  
 Delta R.T.: -0.008 min  
 Response: 87796  
 Conc: 1.23 ng/ml



#40 AR-1262-5

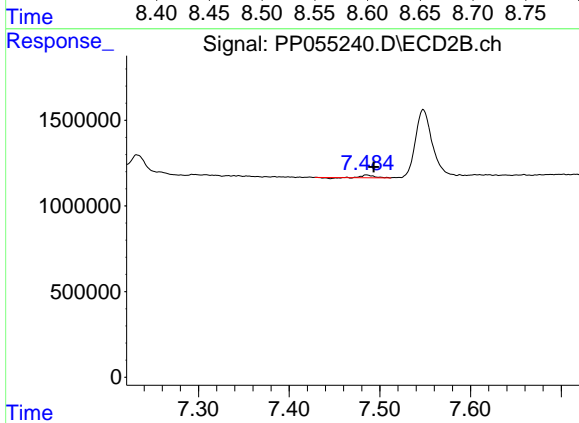
R.T.: 8.046 min  
 Delta R.T.: -0.008 min  
 Response: 188120  
 Conc: 3.17 ng/ml



#41 AR-1268-1

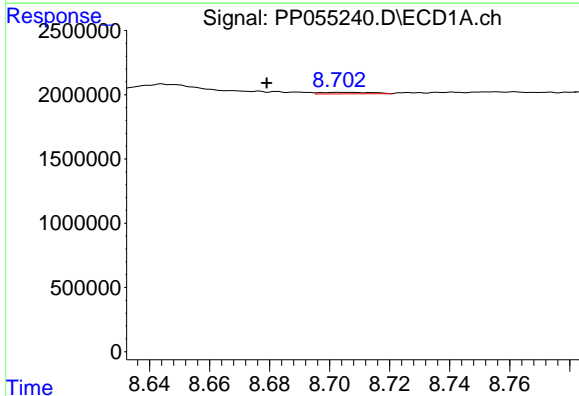
R.T.: 8.597 min  
 Delta R.T.: 0.012 min  
 Response: 4727144  
 Conc: 19.34 ng/ml

Instrument :  
 ECD\_P  
 ClientSampleId :



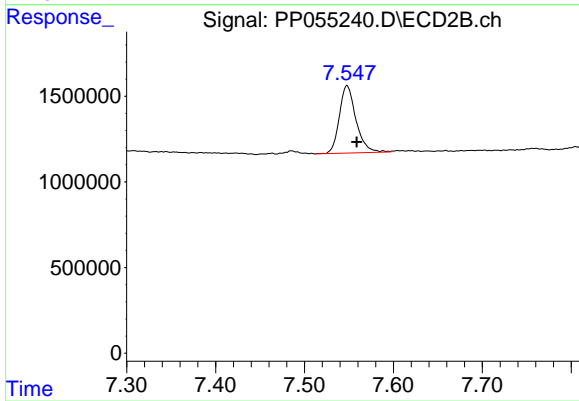
#41 AR-1268-1

R.T.: 7.486 min  
 Delta R.T.: -0.007 min  
 Response: 119642  
 Conc: 0.55 ng/ml



#42 AR-1268-2

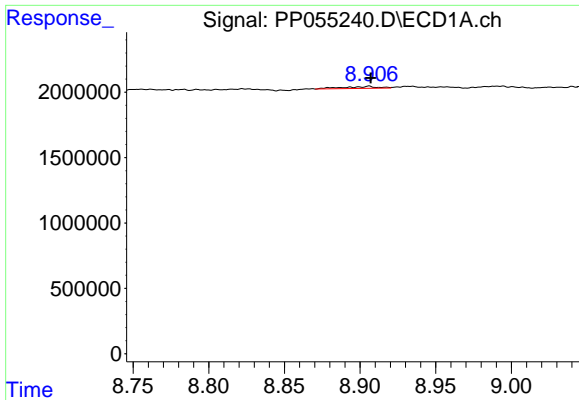
R.T.: 8.704 min  
 Delta R.T.: 0.025 min  
 Response: 139502  
 Conc: 0.61 ng/ml



#42 AR-1268-2

R.T.: 7.548 min  
 Delta R.T.: -0.011 min  
 Response: 5108873  
 Conc: 26.18 ng/ml

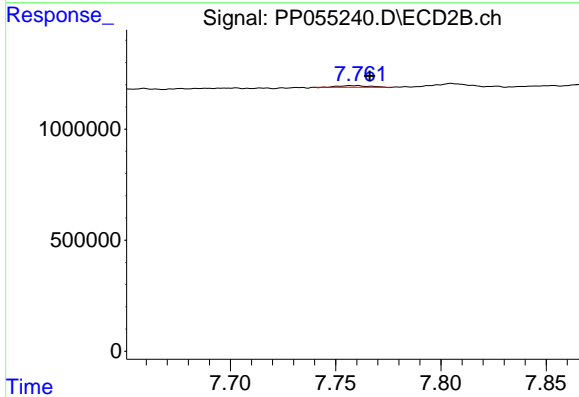




#43 AR-1268-3

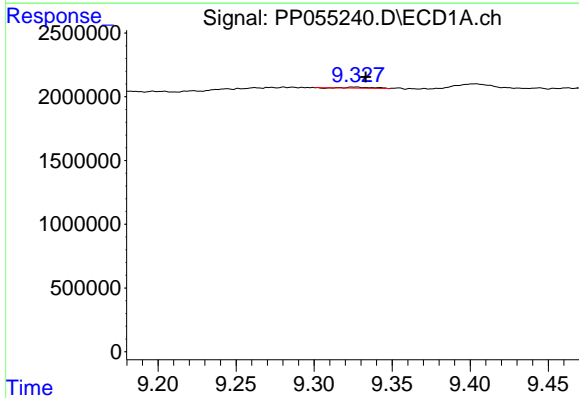
R.T.: 8.906 min  
 Delta R.T.: -0.001 min  
 Response: 227553  
 Conc: 1.14 ng/ml

Instrument :  
 ECD\_P  
 ClientSampleId :



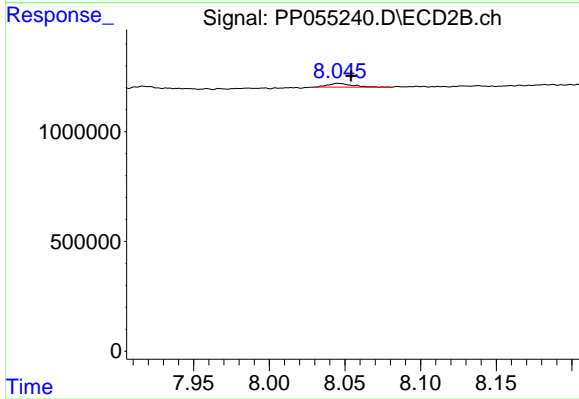
#43 AR-1268-3

R.T.: 7.758 min  
 Delta R.T.: -0.008 min  
 Response: 77569  
 Conc: 0.45 ng/ml



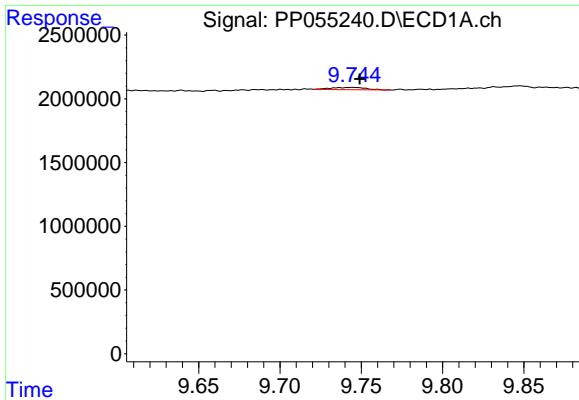
#44 AR-1268-4

R.T.: 9.326 min  
 Delta R.T.: -0.007 min  
 Response: 87796  
 Conc: 1.12 ng/ml



#44 AR-1268-4

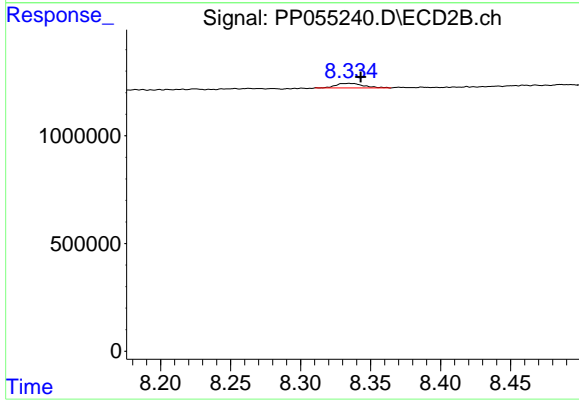
R.T.: 8.046 min  
 Delta R.T.: -0.008 min  
 Response: 188120  
 Conc: 2.95 ng/ml



#45 AR-1268-5

R.T.: 9.745 min  
 Delta R.T.: -0.004 min  
 Response: 273640  
 Conc: 0.43 ng/ml

Instrument :  
 ECD\_P  
 ClientSampleId :



#45 AR-1268-5

R.T.: 8.334 min  
 Delta R.T.: -0.009 min  
 Response: 291381  
 Conc: 0.55 ng/ml