

Data Path : Z:\pestpcbsrv\HPCHEM1\ECD_P\Data\PP020223\
 Data File : PP055243.D
 Signal(s) : Signal #1: ECD1A.ch Signal #2: ECD2B.ch
 Acq On : 02 Feb 2023 10:35
 Operator : YP\AJ
 Sample : 01385-01
 Misc :
 ALS Vial : 8 Sample Multiplier: 1

Instrument :
 ECD_P
 ClientSampleId :

Integration File signal 1: autoint1.e
 Integration File signal 2: autoint2.e
 Quant Time: Feb 02 23:37:02 2023
 Quant Method : Z:\pestpcbsrv\HPCHEM1\ECD_P\methods\PP012423.M
 Quant Title : GC EXTRACTABLES
 QLast Update : Tue Jan 24 03:37:45 2023
 Response via : Initial Calibration
 Integrator: ChemStation

Volume Inj. : 2 µl
 Signal #1 Phase : ZB-MR2 Signal #2 Phase: ZB-MR2
 Signal #1 Info : 30Mx0.32mmx 0.50µ Signal #2 Info : 30M x 0.32mm x 0.25µm

Compound	RT#1	RT#2	Resp#1	Resp#2	ng/ml	ng/ml

System Monitoring Compounds						
1) SA Tetrachlo...	4.327	3.574	24120936	26703708	13.873	17.788 #
2) SA Decachlor...	10.079	8.584	33105759	25137362	19.118	18.613
Target Compounds						
3) L1 AR-1016-1	5.495	4.657	1378758	1275880	20.514	25.779 #
4) L1 AR-1016-2	5.519	4.657f	2301615	1275880	24.018	18.432
5) L1 AR-1016-3	5.581	4.850	844649	777713	14.121	20.908 #
6) L1 AR-1016-4	5.683	4.902	721341	940699	15.054	29.937 #
7) L1 AR-1016-5	5.968f	5.113	317285	5578821	6.261	136.453 #
8) L2 AR-1221-1	4.511f	3.790	161308	597269	6.860	30.124 #
9) L2 AR-1221-2	4.634	3.872	1204705	2660552	67.806	179.496 #
10) L2 AR-1221-3	4.712	0.000	1778451	0	33.051	N.D. #
11) L3 AR-1232-1	4.712	0.000	1778451	0	40.071	N.D. #
12) L3 AR-1232-2	5.230	4.657f	2524920	1275880	111.649	39.943 #
13) L3 AR-1232-3	5.519	4.850	2301615	777713	52.408	46.651
14) L3 AR-1232-4	5.683	4.952	721341	1870412	32.589	115.986 #
15) L3 AR-1232-5	5.776	5.113	664163	5578821	37.937	315.875 #
16) L4 AR-1242-1	5.495	4.657	1378758	1275880	24.626	31.148 #
17) L4 AR-1242-2	5.519	4.657f	2301615	1275880	28.832	22.344
18) L4 AR-1242-3	5.581	4.850	844649	777713	17.008	25.195 #
19) L4 AR-1242-4	5.683	4.952	721341	1870412	17.999	57.574 #
20) L4 AR-1242-5	6.413	5.483f	1471948	4027204	33.105	107.761 #
21) L5 AR-1248-1	5.495	4.657	1378758	1275880	33.061	41.153
22) L5 AR-1248-2	5.776	4.902	664163	940699	10.447	20.572 #
23) L5 AR-1248-3	5.968	4.952	317285	1870412	4.588	39.234 #
24) L5 AR-1248-4	6.389	5.113	603049	5578821	7.952	101.016 #
25) L5 AR-1248-5	6.413	5.502	1471948	1458573	19.947	29.663 #
26) L6 AR-1254-1	6.356	5.483f	4025800	4027204	51.029	49.867
27) L6 AR-1254-2	6.575	5.598f	2704382	421714	22.346	5.893 #
28) L6 AR-1254-3	6.947	6.028	2472239	1259568	20.183	11.306 #
29) L6 AR-1254-4	7.231	6.237	-85141	649462	N.D.	10.559 #
30) L6 AR-1254-5	7.673f	6.659	1931659	1017776	19.095	10.736 #
31) L7 AR-1260-1	7.105	6.169f	695659	2152395	7.298	27.757 #
32) L7 AR-1260-2	7.365	6.335	3783771	332622	33.620	3.700 #
33) L7 AR-1260-3	7.733	6.510	111931	493792	1.390	5.815 #
34) L7 AR-1260-4	7.960	6.962	4674083	410849	48.148	5.738 #
35) L7 AR-1260-5	0.000	7.197	0	338134	N.D.	2.199 #
36) L8 AR-1262-1	7.733	6.763	111931	566297	0.949	13.182 #
37) L8 AR-1262-2	0.000	6.962	0	410849	N.D.	4.436 #
38) L8 AR-1262-3	8.619f	7.487	-140991	346751	N.D.	4.759 #
39) L8 AR-1262-4	8.677	7.541f	322871	1688828	4.200	12.914 #
40) L8 AR-1262-5	9.361f	8.044	73954	50678	1.034	0.854
41) L9 AR-1268-1	0.000	7.487	0	346751	N.D.	1.604 #

Data Path : Z:\pestpcbsrv\HPCHEM1\ECD_P\Data\PP020223\
 Data File : PP055243.D
 Signal(s) : Signal #1: ECD1A.ch Signal #2: ECD2B.ch
 Acq On : 02 Feb 2023 10:35
 Operator : YP\AJ
 Sample : 01385-01
 Misc :
 ALS Vial : 8 Sample Multiplier: 1

Instrument :
 ECD_P
 ClientSampleId :

Integration File signal 1: autoint1.e
 Integration File signal 2: autoint2.e
 Quant Time: Feb 02 23:37:02 2023
 Quant Method : Z:\pestpcbsrv\HPCHEM1\ECD_P\methods\PP012423.M
 Quant Title : GC EXTRACTABLES
 QLast Update : Tue Jan 24 03:37:45 2023
 Response via : Initial Calibration
 Integrator: ChemStation

Volume Inj. : 2 µl
 Signal #1 Phase : ZB-MR1 Signal #2 Phase: ZB-MR2
 Signal #1 Info : 30Mx0.32mmx 0.50µ Signal #2 Info : 30M x 0.32mm x 0.25µm

	Compound	RT#1	RT#2	Resp#1	Resp#2	ng/ml	ng/ml
42)	L9 AR-1268-2	8.677	7.541f	322871	1688828	1.422	8.655 #
43)	L9 AR-1268-3	8.907	7.768	59668	216750	0.299	1.262 #
44)	L9 AR-1268-4	9.361f	8.044	73954	50678	0.942	0.795
45)	L9 AR-1268-5	9.731f	8.335	282010	174425	0.443	0.331 #

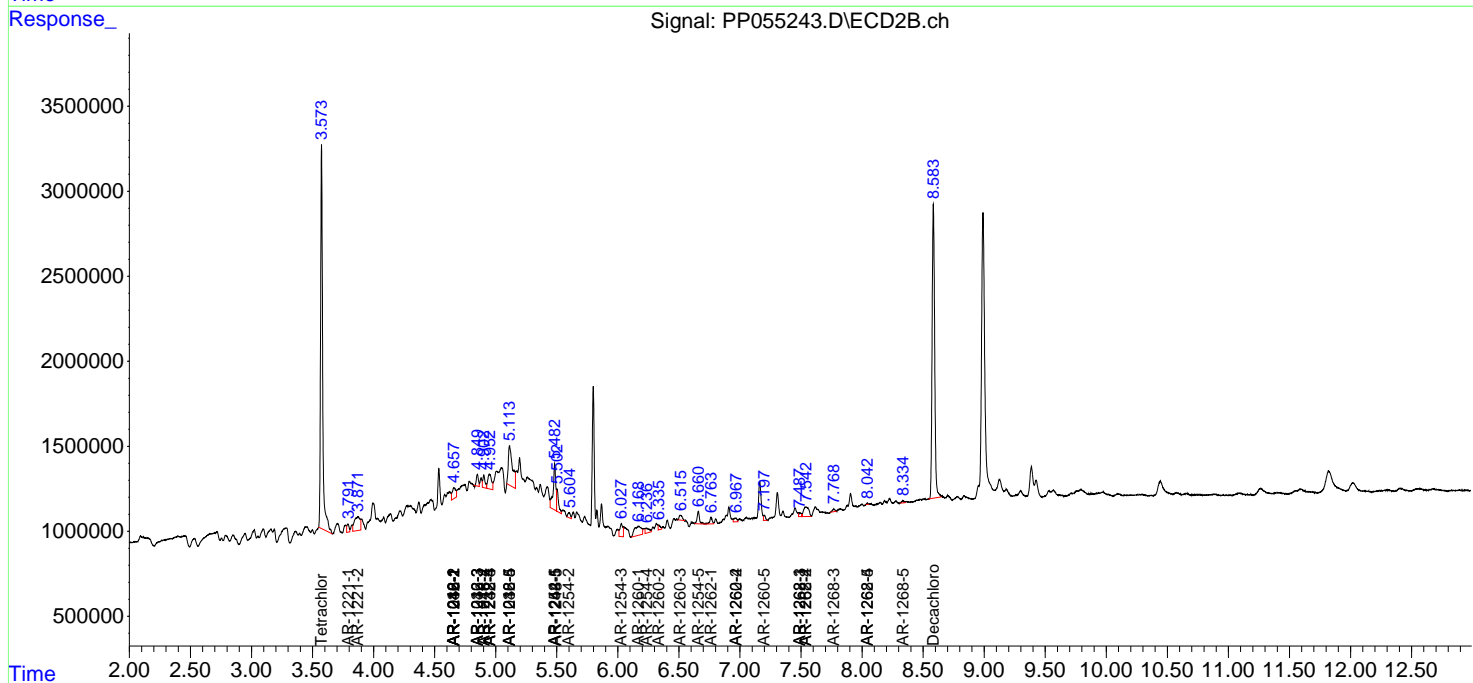
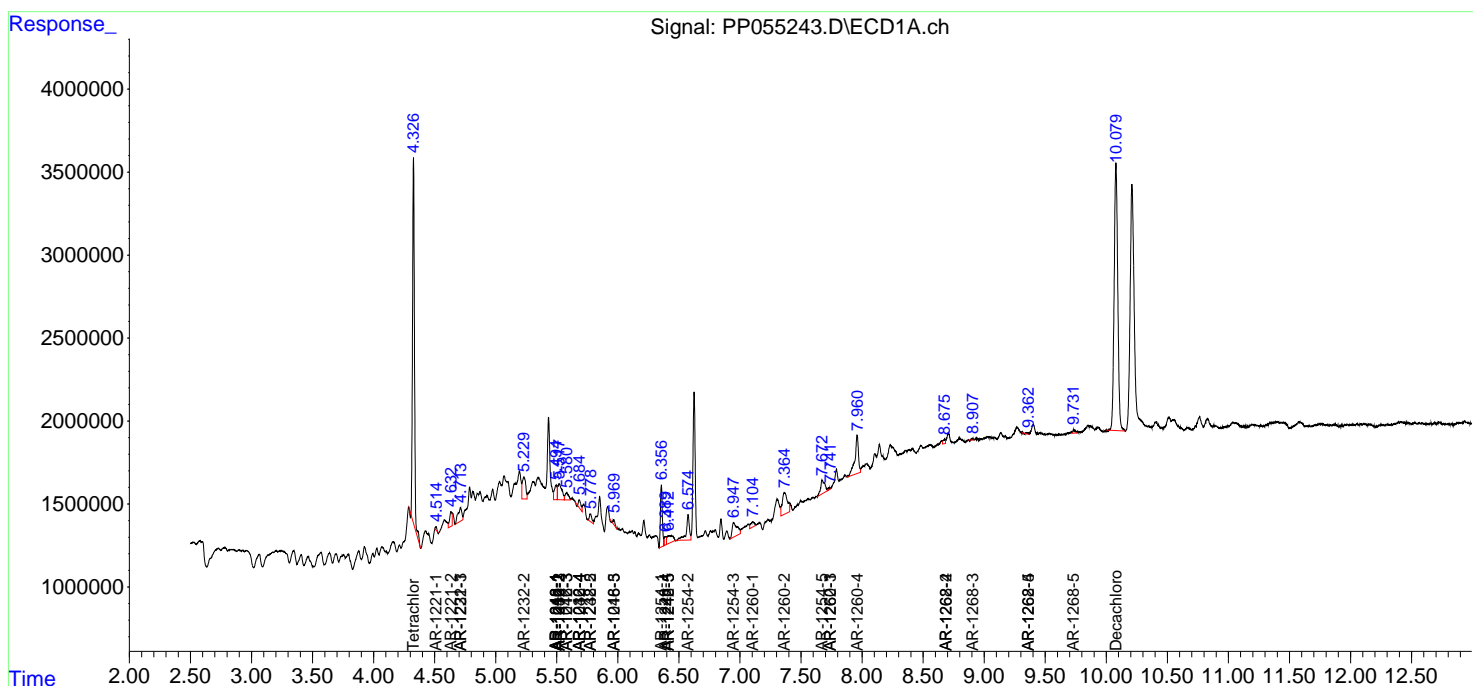
(f)=RT Delta > 1/2 Window (#)=Amounts differ by > 25% (m)=manual int.

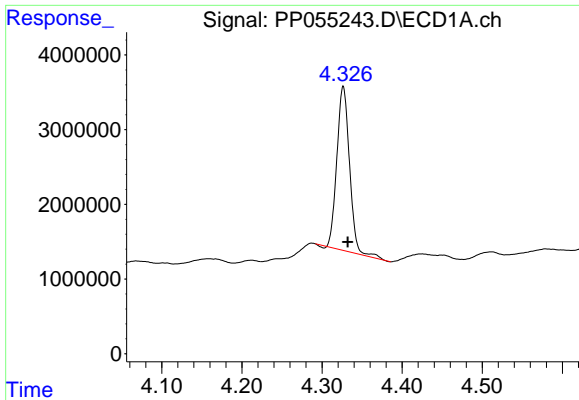
Data Path : Z:\pestpcbsrv\HPCHEM1\ECD_P\Data\PP020223\
 Data File : PP055243.D
 Signal(s) : Signal #1: ECD1A.ch Signal #2: ECD2B.ch
 Acq On : 02 Feb 2023 10:35
 Operator : YP\AJ
 Sample : 01385-01
 Misc :
 ALS Vial : 8 Sample Multiplier: 1

Instrument :
 ECD_P
 ClientSampleId :

Integration File signal 1: autoint1.e
 Integration File signal 2: autoint2.e
 Quant Time: Feb 02 23:37:02 2023
 Quant Method : Z:\pestpcbsrv\HPCHEM1\ECD_P\methods\PP012423.M
 Quant Title : GC EXTRACTABLES
 QLast Update : Tue Jan 24 03:37:45 2023
 Response via : Initial Calibration
 Integrator: ChemStation

Volume Inj. : 2 µl
 Signal #1 Phase : ZB-MR1 Signal #2 Phase: ZB-MR2
 Signal #1 Info : 30Mx0.32mmx 0.50µ Signal #2 Info : 30M x 0.32mm x 0.25µm

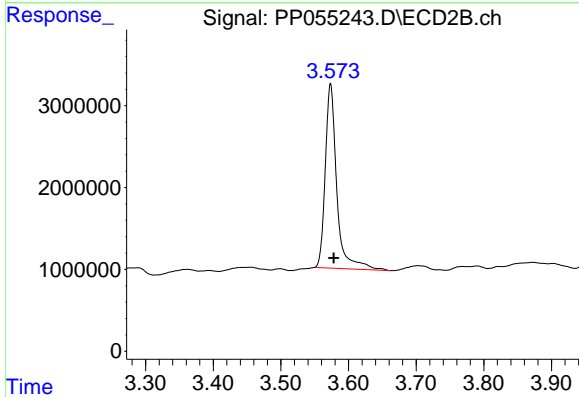




#1 Tetrachloro-m-xylene

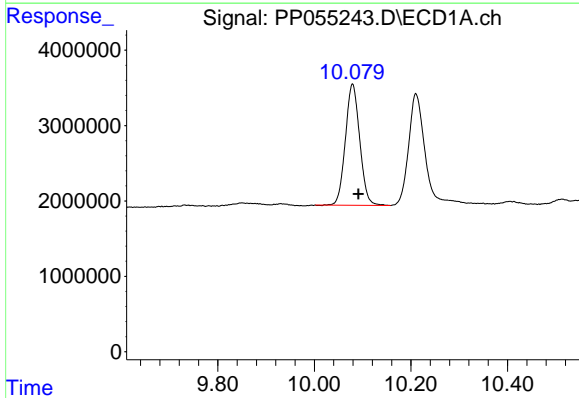
R.T.: 4.327 min
 Delta R.T.: -0.005 min
 Response: 24120936
 Conc: 13.87 ng/ml

Instrument :
 ECD_P
 ClientSampleId :



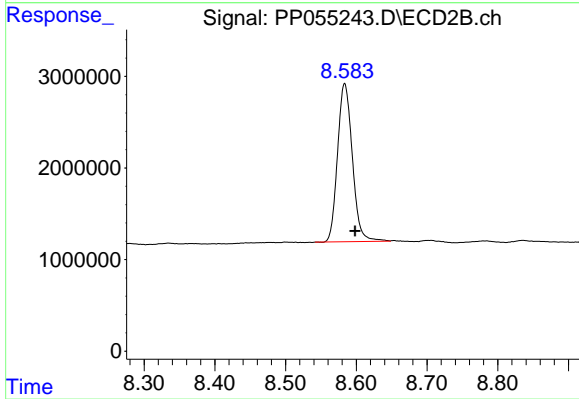
#1 Tetrachloro-m-xylene

R.T.: 3.574 min
 Delta R.T.: -0.005 min
 Response: 26703708
 Conc: 17.79 ng/ml



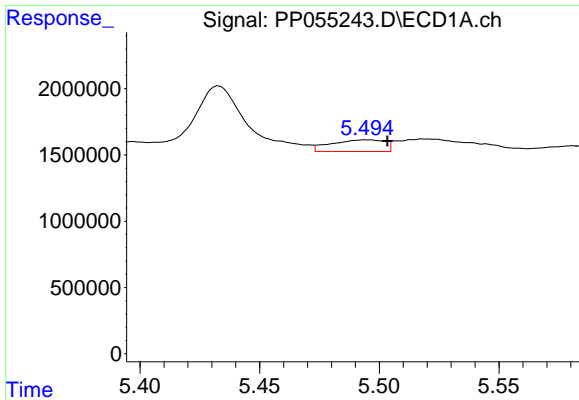
#2 Decachlorobiphenyl

R.T.: 10.079 min
 Delta R.T.: -0.012 min
 Response: 33105759
 Conc: 19.12 ng/ml



#2 Decachlorobiphenyl

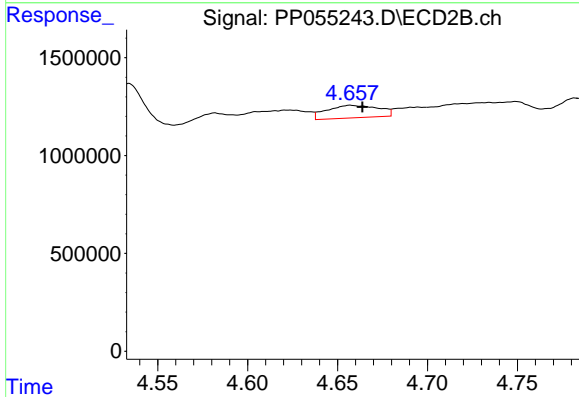
R.T.: 8.584 min
 Delta R.T.: -0.015 min
 Response: 25137362
 Conc: 18.61 ng/ml



#3 AR-1016-1

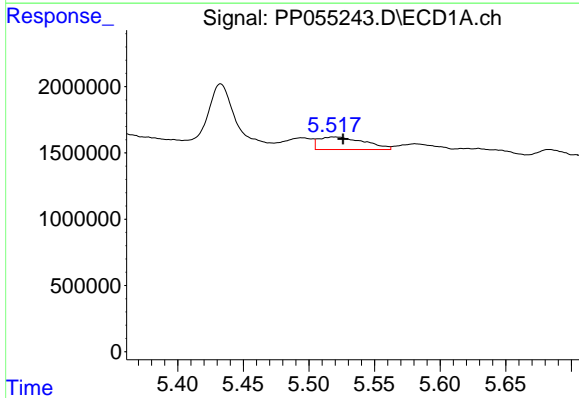
R.T.: 5.495 min
 Delta R.T.: -0.008 min
 Response: 1378758
 Conc: 20.51 ng/ml

Instrument :
 ECD_P
 ClientSampleId :



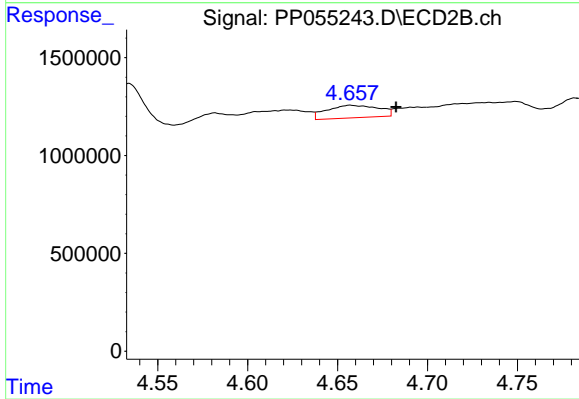
#3 AR-1016-1

R.T.: 4.657 min
 Delta R.T.: -0.007 min
 Response: 1275880
 Conc: 25.78 ng/ml



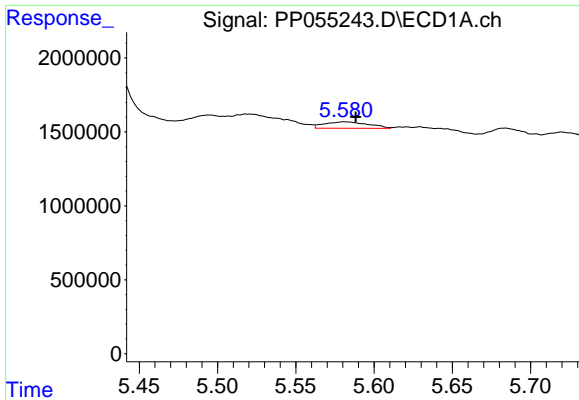
#4 AR-1016-2

R.T.: 5.519 min
 Delta R.T.: -0.007 min
 Response: 2301615
 Conc: 24.02 ng/ml



#4 AR-1016-2

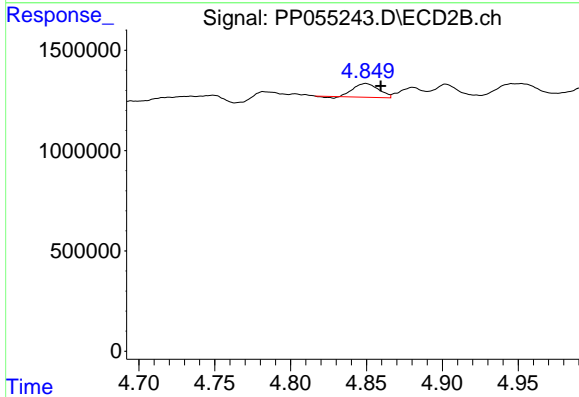
R.T.: 4.657 min
 Delta R.T.: -0.025 min
 Response: 1275880
 Conc: 18.43 ng/ml



#5 AR-1016-3

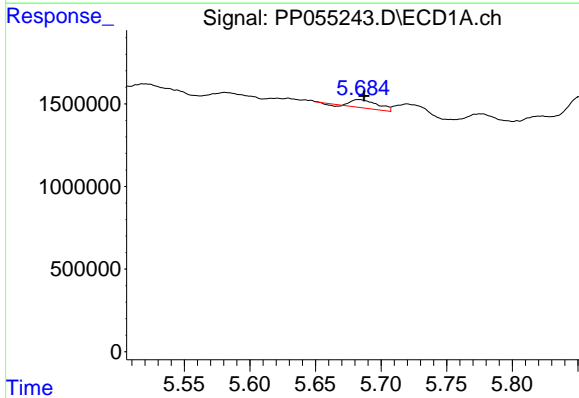
R.T.: 5.581 min
 Delta R.T.: -0.007 min
 Response: 844649
 Conc: 14.12 ng/ml

Instrument :
 ECD_P
 ClientSampleId :



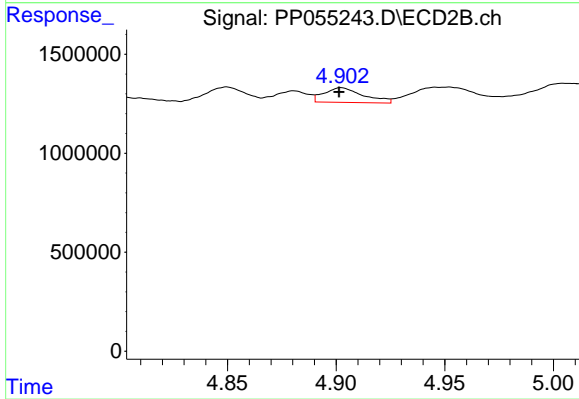
#5 AR-1016-3

R.T.: 4.850 min
 Delta R.T.: -0.010 min
 Response: 777713
 Conc: 20.91 ng/ml



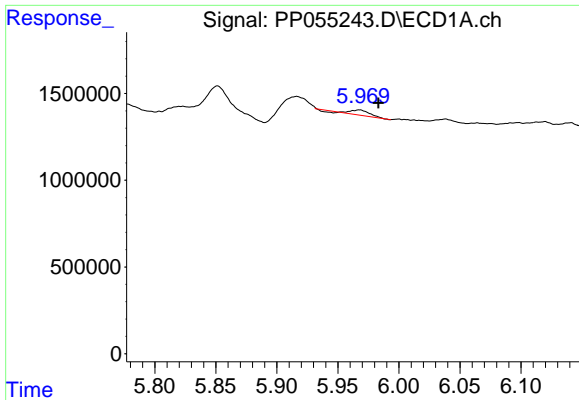
#6 AR-1016-4

R.T.: 5.683 min
 Delta R.T.: -0.004 min
 Response: 721341
 Conc: 15.05 ng/ml



#6 AR-1016-4

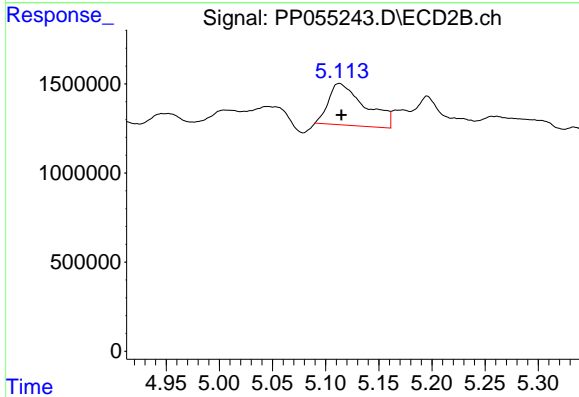
R.T.: 4.902 min
 Delta R.T.: 0.000 min
 Response: 940699
 Conc: 29.94 ng/ml



#7 AR-1016-5

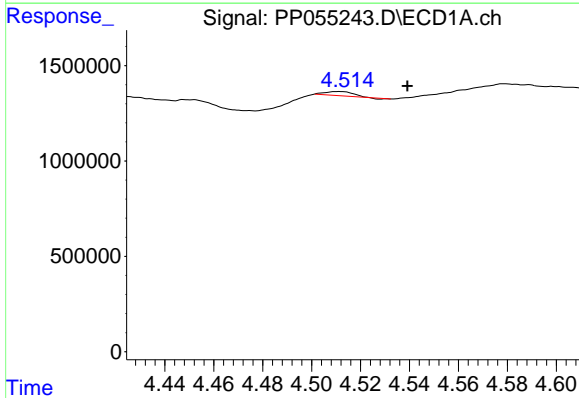
R.T.: 5.968 min
 Delta R.T.: -0.016 min
 Response: 317285
 Conc: 6.26 ng/ml

Instrument :
 ECD_P
 ClientSampleId :



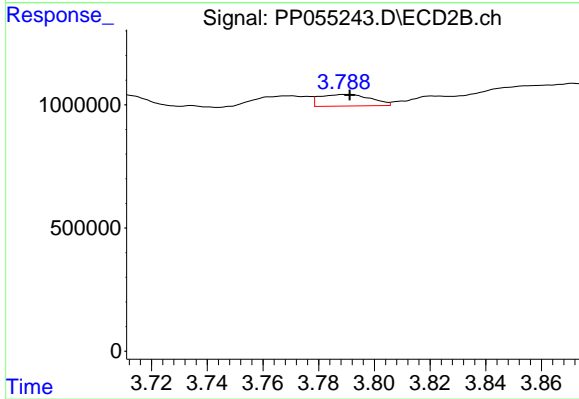
#7 AR-1016-5

R.T.: 5.113 min
 Delta R.T.: -0.002 min
 Response: 5578821
 Conc: 136.45 ng/ml



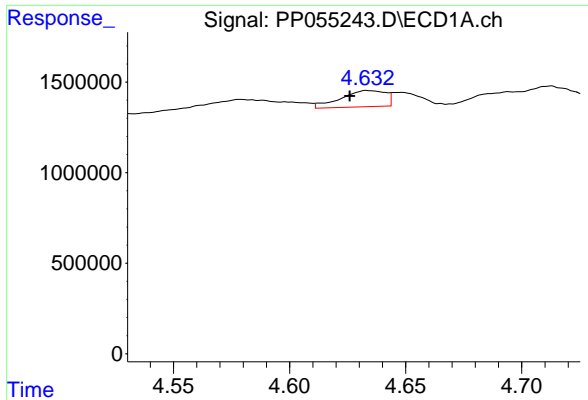
#8 AR-1221-1

R.T.: 4.511 min
 Delta R.T.: -0.028 min
 Response: 161308
 Conc: 6.86 ng/ml



#8 AR-1221-1

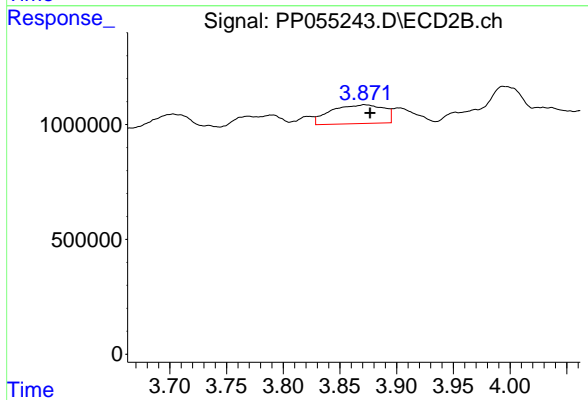
R.T.: 3.790 min
 Delta R.T.: 0.000 min
 Response: 597269
 Conc: 30.12 ng/ml



#9 AR-1221-2

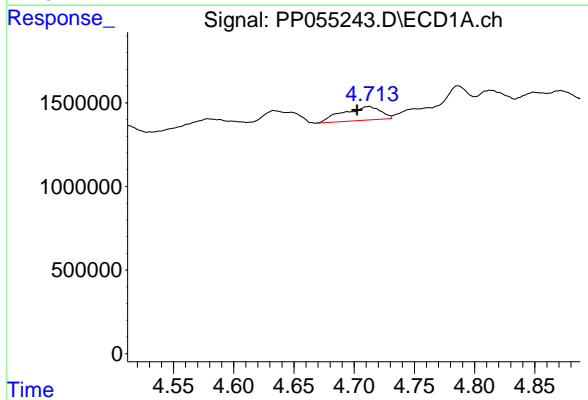
R.T.: 4.634 min
 Delta R.T.: 0.008 min
 Response: 1204705
 Conc: 67.81 ng/ml

Instrument :
 ECD_P
 ClientSampleId :



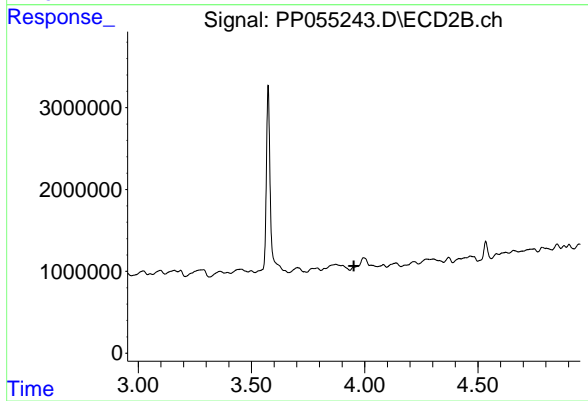
#9 AR-1221-2

R.T.: 3.872 min
 Delta R.T.: -0.005 min
 Response: 2660552
 Conc: 179.50 ng/ml



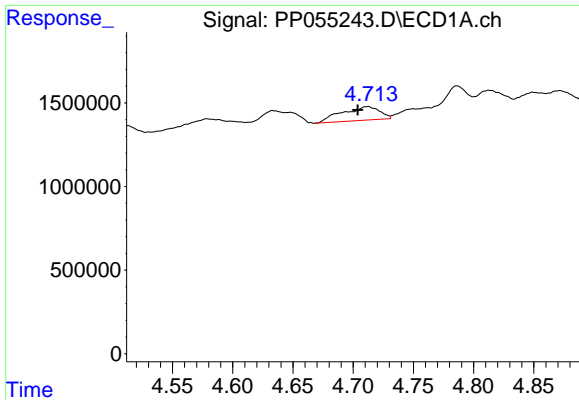
#10 AR-1221-3

R.T.: 4.712 min
 Delta R.T.: 0.010 min
 Response: 1778451
 Conc: 33.05 ng/ml



#10 AR-1221-3

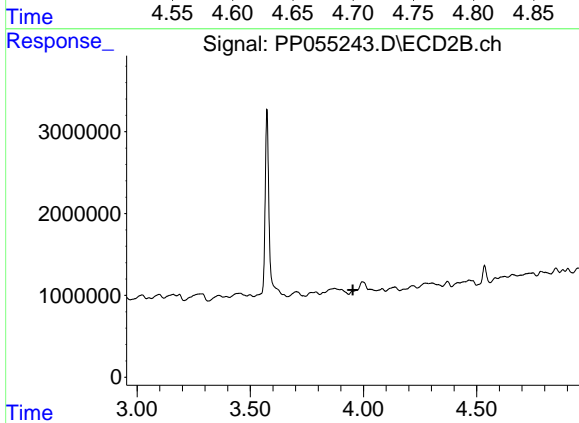
R.T.: 0.000 min
 Exp R.T. : 3.952 min
 Response: 0
 Conc: N.D.



#11 AR-1232-1

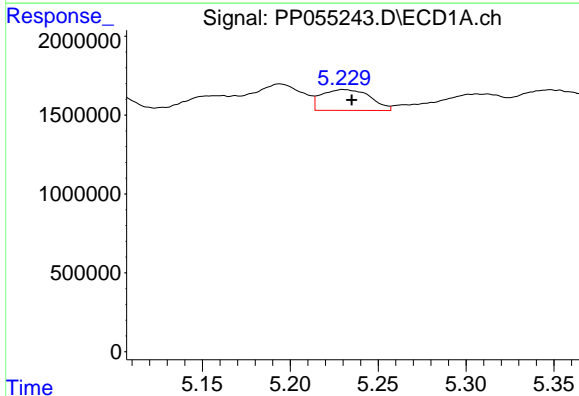
R.T.: 4.712 min
 Delta R.T.: 0.008 min
 Response: 1778451
 Conc: 40.07 ng/ml

Instrument :
 ECD_P
 ClientSampleId :



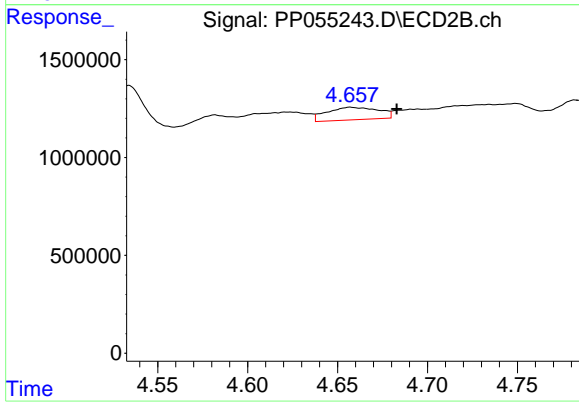
#11 AR-1232-1

R.T.: 0.000 min
 Exp R.T. : 3.953 min
 Response: 0
 Conc: N.D.



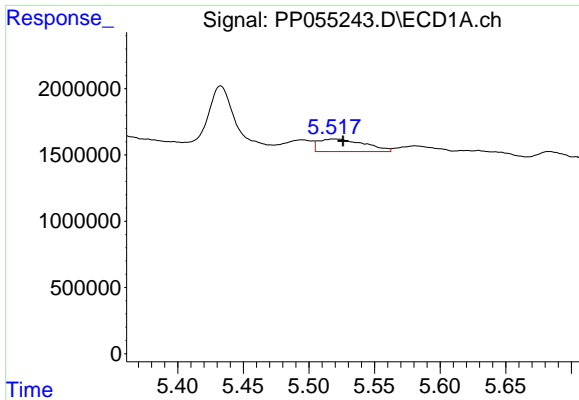
#12 AR-1232-2

R.T.: 5.230 min
 Delta R.T.: -0.005 min
 Response: 2524920
 Conc: 111.65 ng/ml



#12 AR-1232-2

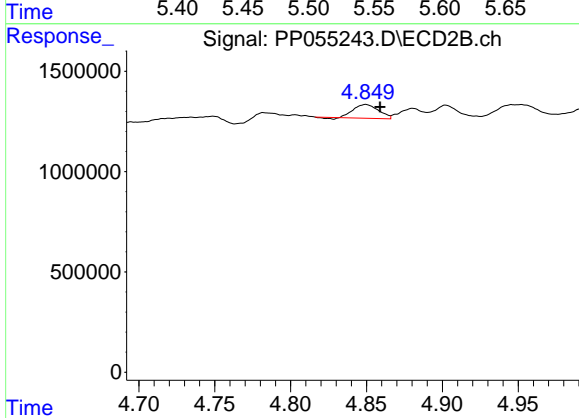
R.T.: 4.657 min
 Delta R.T.: -0.026 min
 Response: 1275880
 Conc: 39.94 ng/ml



#13 AR-1232-3

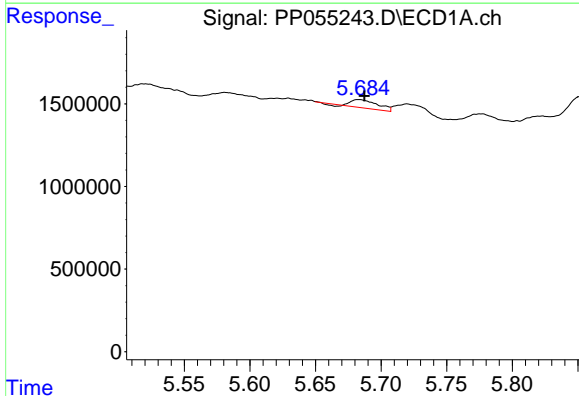
R.T.: 5.519 min
 Delta R.T.: -0.007 min
 Response: 2301615
 Conc: 52.41 ng/ml

Instrument :
 ECD_P
 ClientSampleId :



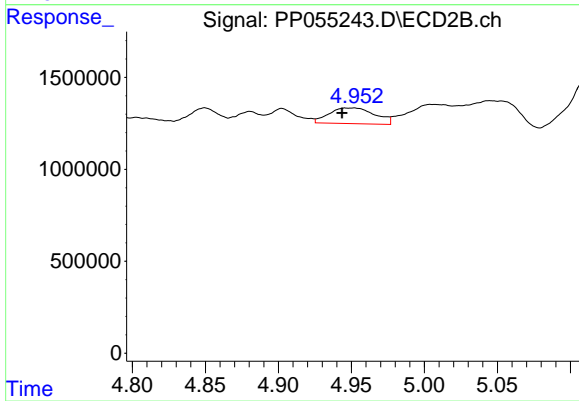
#13 AR-1232-3

R.T.: 4.850 min
 Delta R.T.: -0.009 min
 Response: 777713
 Conc: 46.65 ng/ml



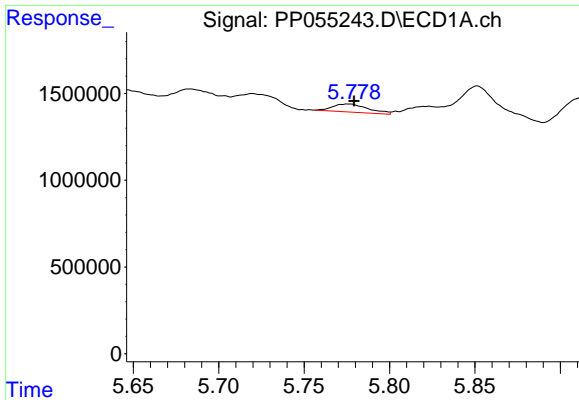
#14 AR-1232-4

R.T.: 5.683 min
 Delta R.T.: -0.004 min
 Response: 721341
 Conc: 32.59 ng/ml



#14 AR-1232-4

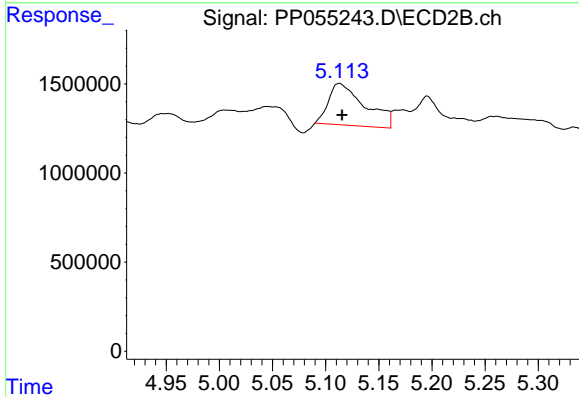
R.T.: 4.952 min
 Delta R.T.: 0.008 min
 Response: 1870412
 Conc: 115.99 ng/ml



#15 AR-1232-5

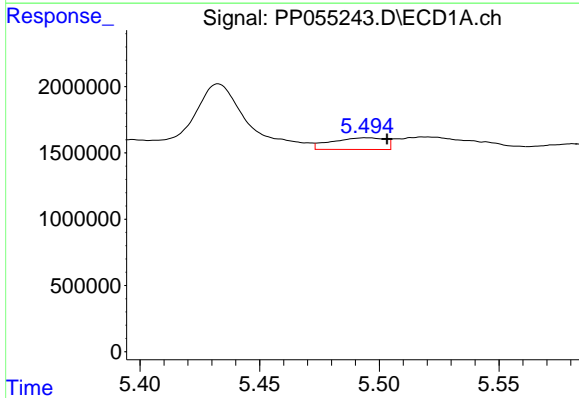
R.T.: 5.776 min
 Delta R.T.: -0.003 min
 Response: 664163
 Conc: 37.94 ng/ml

Instrument :
 ECD_P
 ClientSampleId :



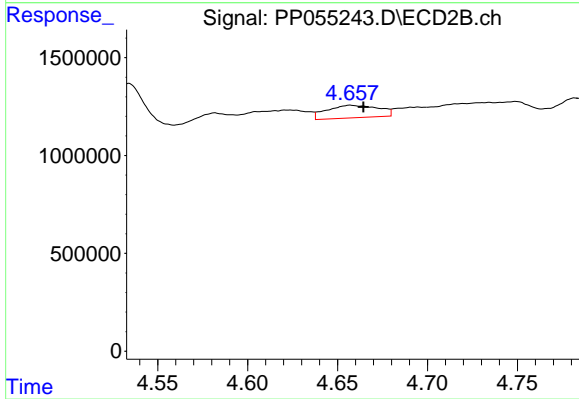
#15 AR-1232-5

R.T.: 5.113 min
 Delta R.T.: -0.003 min
 Response: 5578821
 Conc: 315.88 ng/ml



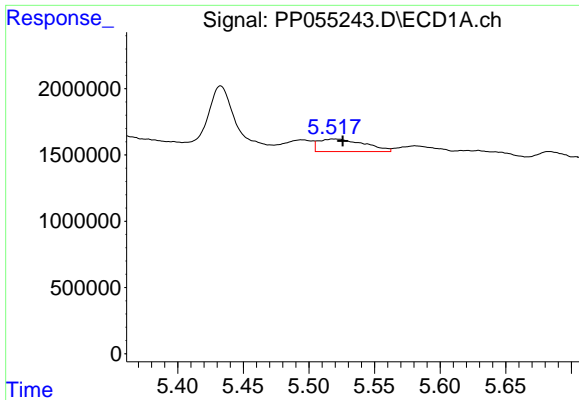
#16 AR-1242-1

R.T.: 5.495 min
 Delta R.T.: -0.008 min
 Response: 1378758
 Conc: 24.63 ng/ml



#16 AR-1242-1

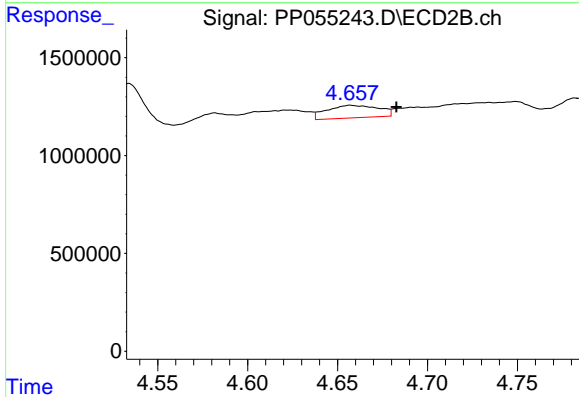
R.T.: 4.657 min
 Delta R.T.: -0.007 min
 Response: 1275880
 Conc: 31.15 ng/ml



#17 AR-1242-2

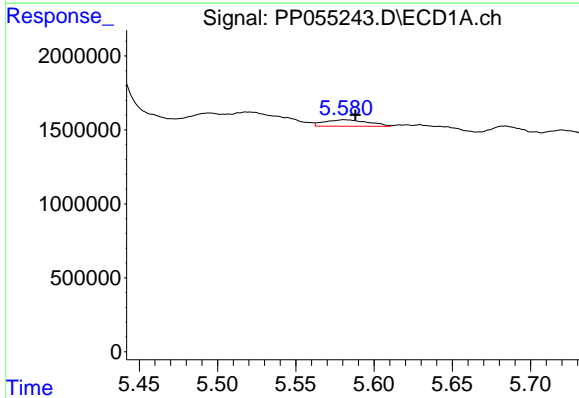
R.T.: 5.519 min
 Delta R.T.: -0.007 min
 Response: 2301615
 Conc: 28.83 ng/ml

Instrument :
 ECD_P
 ClientSampleId :



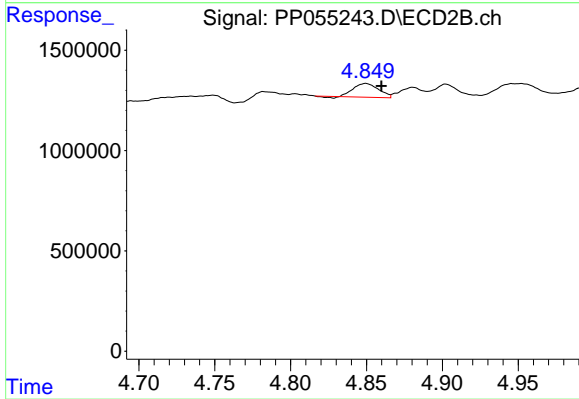
#17 AR-1242-2

R.T.: 4.657 min
 Delta R.T.: -0.026 min
 Response: 1275880
 Conc: 22.34 ng/ml



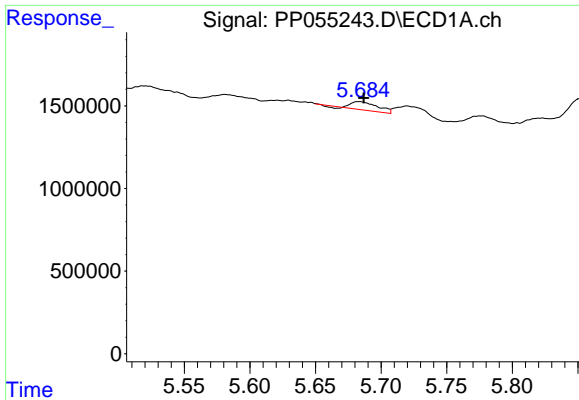
#18 AR-1242-3

R.T.: 5.581 min
 Delta R.T.: -0.007 min
 Response: 844649
 Conc: 17.01 ng/ml



#18 AR-1242-3

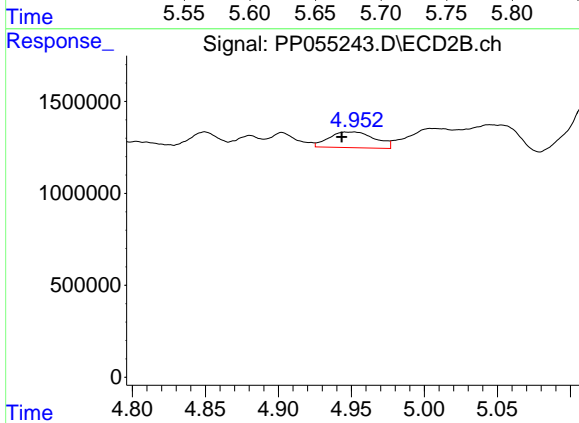
R.T.: 4.850 min
 Delta R.T.: -0.010 min
 Response: 777713
 Conc: 25.20 ng/ml



#19 AR-1242-4

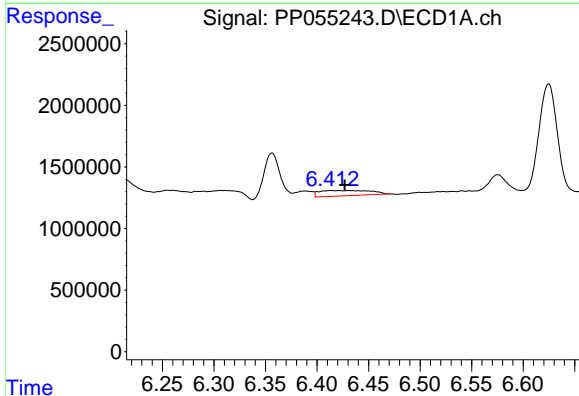
R.T.: 5.683 min
 Delta R.T.: -0.004 min
 Response: 721341
 Conc: 18.00 ng/ml

Instrument :
 ECD_P
 ClientSampleId :



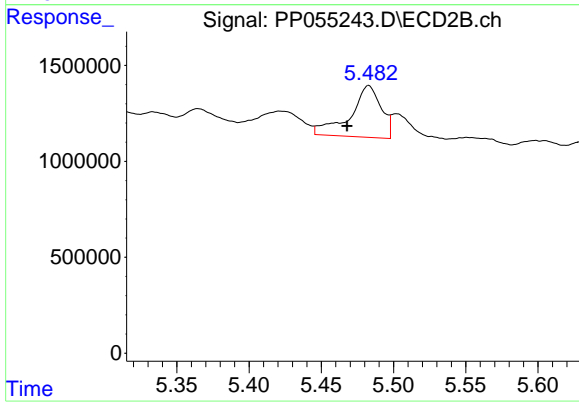
#19 AR-1242-4

R.T.: 4.952 min
 Delta R.T.: 0.008 min
 Response: 1870412
 Conc: 57.57 ng/ml



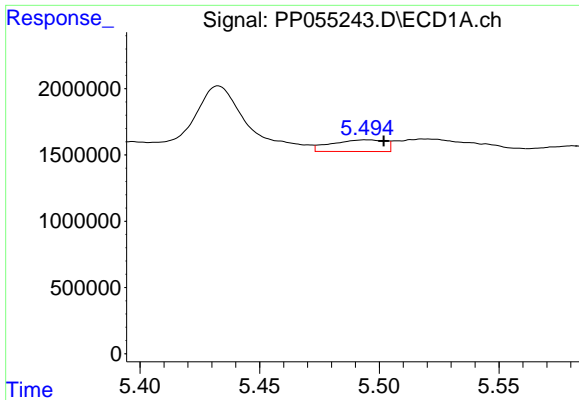
#20 AR-1242-5

R.T.: 6.413 min
 Delta R.T.: -0.014 min
 Response: 1471948
 Conc: 33.10 ng/ml



#20 AR-1242-5

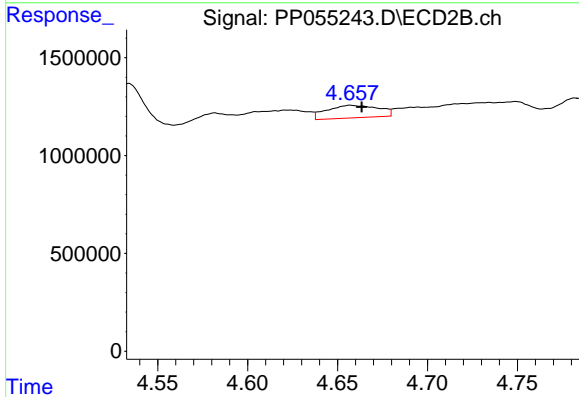
R.T.: 5.483 min
 Delta R.T.: 0.015 min
 Response: 4027204
 Conc: 107.76 ng/ml



#21 AR-1248-1

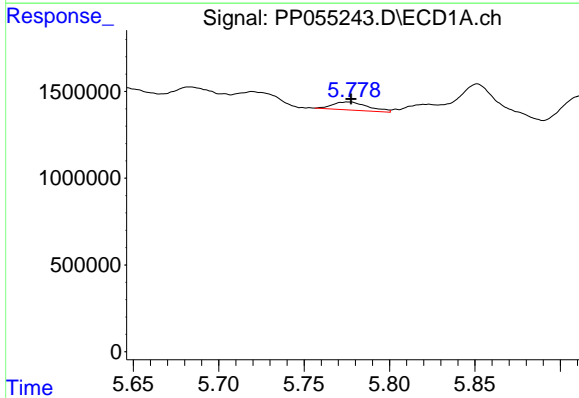
R.T.: 5.495 min
 Delta R.T.: -0.007 min
 Response: 1378758
 Conc: 33.06 ng/ml

Instrument :
 ECD_P
 ClientSampleId :



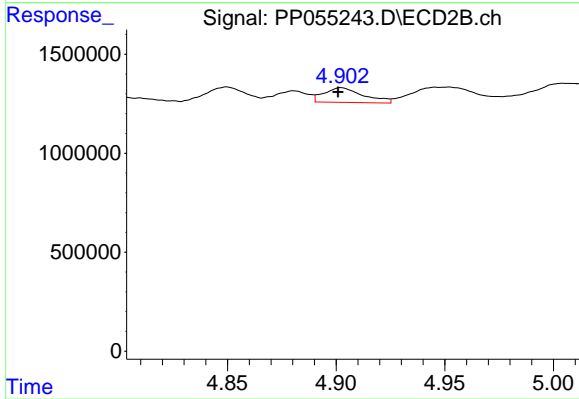
#21 AR-1248-1

R.T.: 4.657 min
 Delta R.T.: -0.006 min
 Response: 1275880
 Conc: 41.15 ng/ml



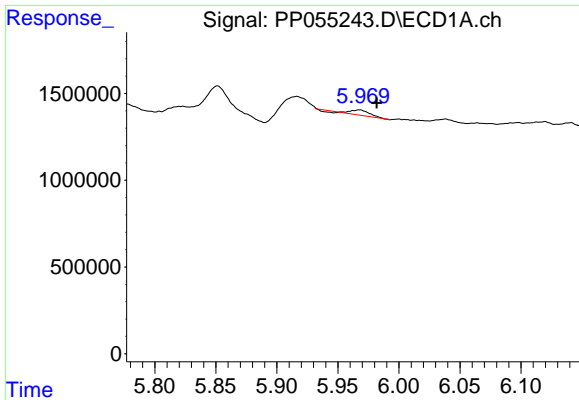
#22 AR-1248-2

R.T.: 5.776 min
 Delta R.T.: -0.001 min
 Response: 664163
 Conc: 10.45 ng/ml



#22 AR-1248-2

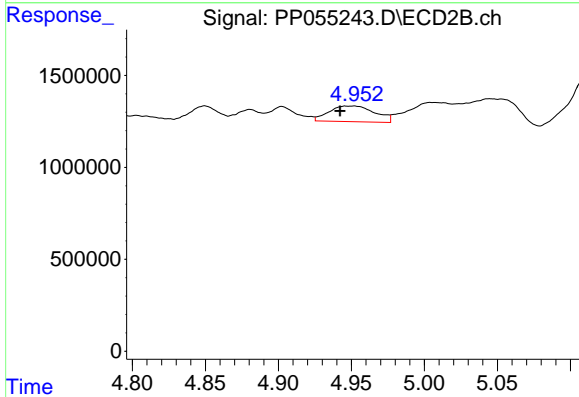
R.T.: 4.902 min
 Delta R.T.: 0.002 min
 Response: 940699
 Conc: 20.57 ng/ml



#23 AR-1248-3

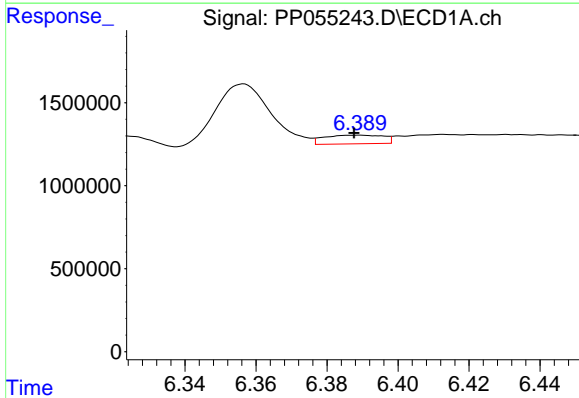
R.T.: 5.968 min
 Delta R.T.: -0.014 min
 Response: 317285
 Conc: 4.59 ng/ml

Instrument :
 ECD_P
 ClientSampleId :



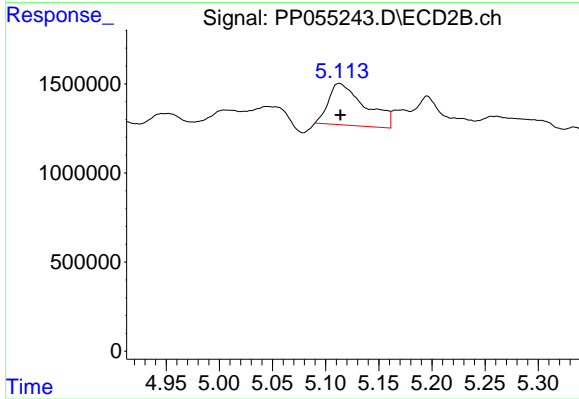
#23 AR-1248-3

R.T.: 4.952 min
 Delta R.T.: 0.009 min
 Response: 1870412
 Conc: 39.23 ng/ml



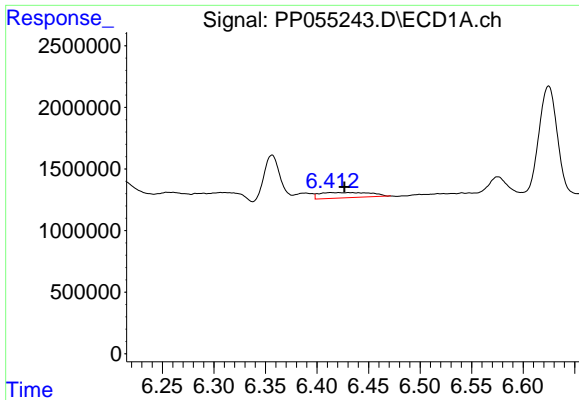
#24 AR-1248-4

R.T.: 6.389 min
 Delta R.T.: 0.000 min
 Response: 603049
 Conc: 7.95 ng/ml



#24 AR-1248-4

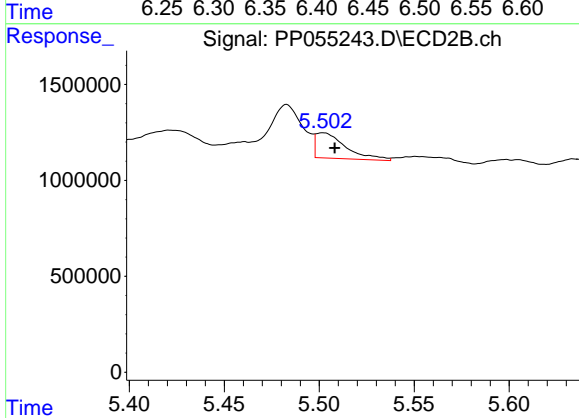
R.T.: 5.113 min
 Delta R.T.: -0.001 min
 Response: 5578821
 Conc: 101.02 ng/ml



#25 AR-1248-5

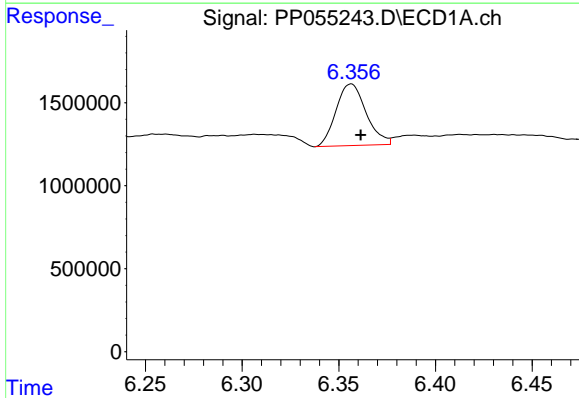
R.T.: 6.413 min
 Delta R.T.: -0.014 min
 Response: 1471948
 Conc: 19.95 ng/ml

Instrument :
 ECD_P
 ClientSampleId :



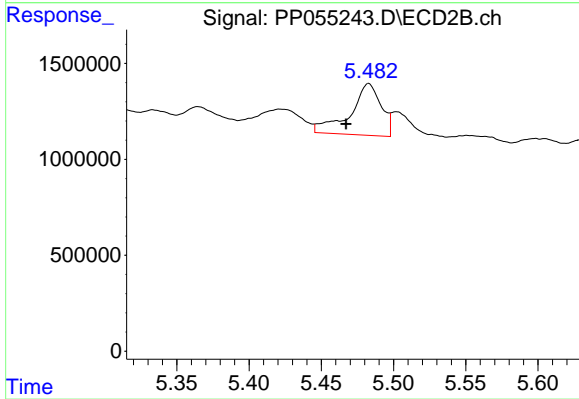
#25 AR-1248-5

R.T.: 5.502 min
 Delta R.T.: -0.006 min
 Response: 1458573
 Conc: 29.66 ng/ml



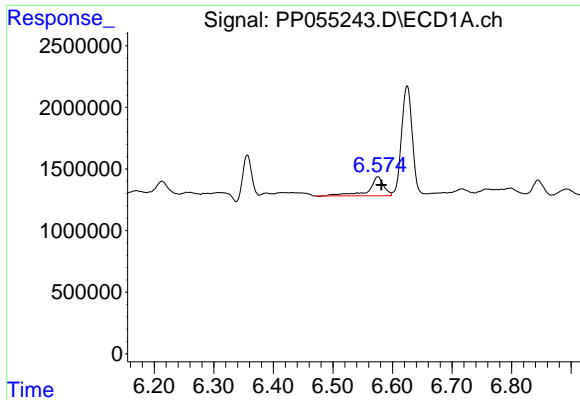
#26 AR-1254-1

R.T.: 6.356 min
 Delta R.T.: -0.005 min
 Response: 4025800
 Conc: 51.03 ng/ml



#26 AR-1254-1

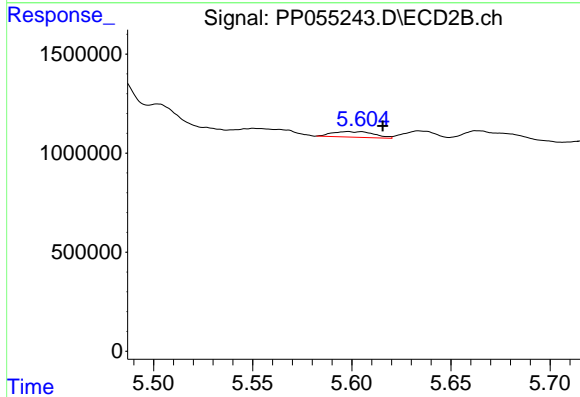
R.T.: 5.483 min
 Delta R.T.: 0.016 min
 Response: 4027204
 Conc: 49.87 ng/ml



#27 AR-1254-2

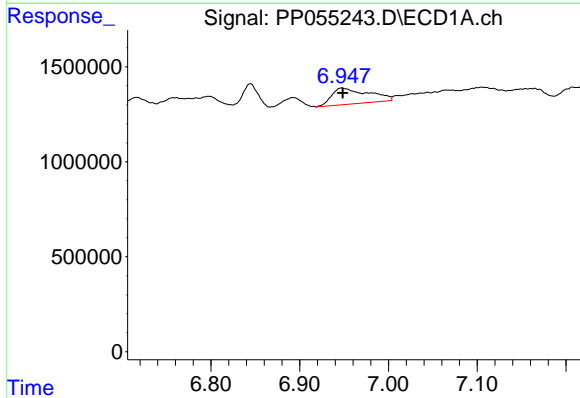
R.T.: 6.575 min
 Delta R.T.: -0.006 min
 Response: 2704382
 Conc: 22.35 ng/ml

Instrument :
 ECD_P
 ClientSampleId :



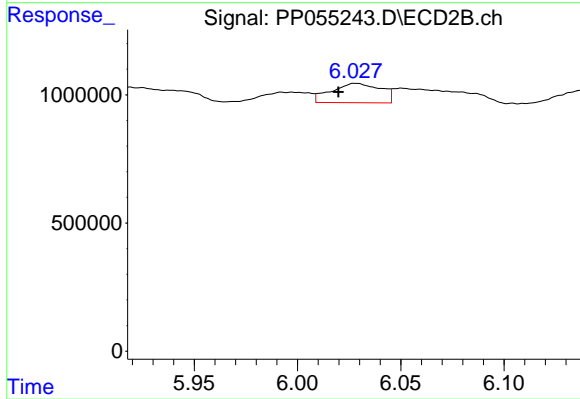
#27 AR-1254-2

R.T.: 5.598 min
 Delta R.T.: -0.018 min
 Response: 421714
 Conc: 5.89 ng/ml



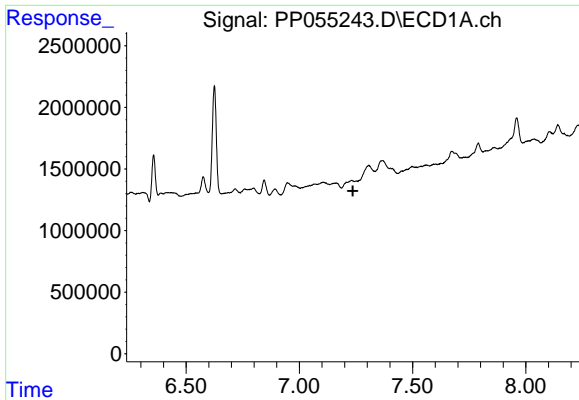
#28 AR-1254-3

R.T.: 6.947 min
 Delta R.T.: -0.001 min
 Response: 2472239
 Conc: 20.18 ng/ml



#28 AR-1254-3

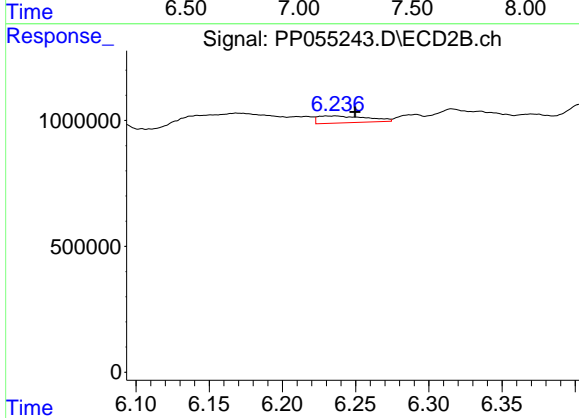
R.T.: 6.028 min
 Delta R.T.: 0.008 min
 Response: 1259568
 Conc: 11.31 ng/ml



#29 AR-1254-4

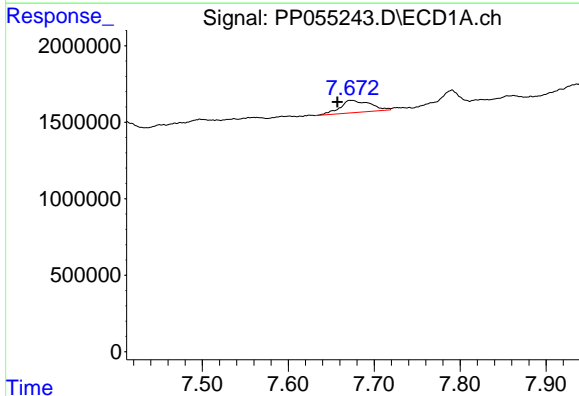
R.T.: 7.231 min
 Delta R.T.: -0.005 min
 Response: -85141
 Conc: N.D.

Instrument :
 ECD_P
 ClientSampleId :



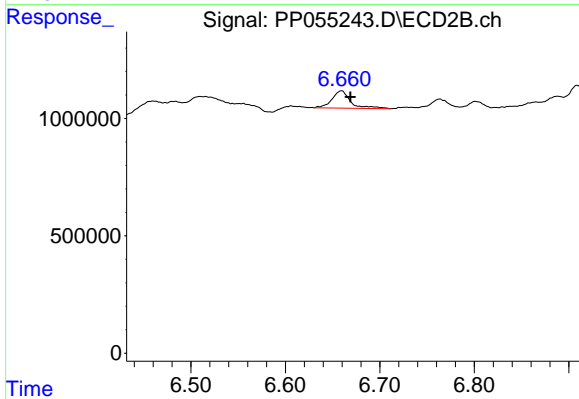
#29 AR-1254-4

R.T.: 6.237 min
 Delta R.T.: -0.013 min
 Response: 649462
 Conc: 10.56 ng/ml



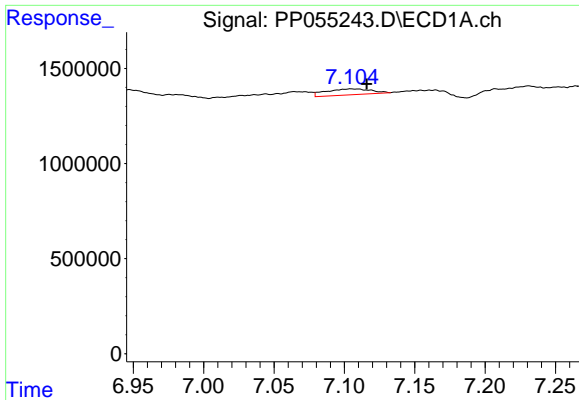
#30 AR-1254-5

R.T.: 7.673 min
 Delta R.T.: 0.016 min
 Response: 1931659
 Conc: 19.09 ng/ml



#30 AR-1254-5

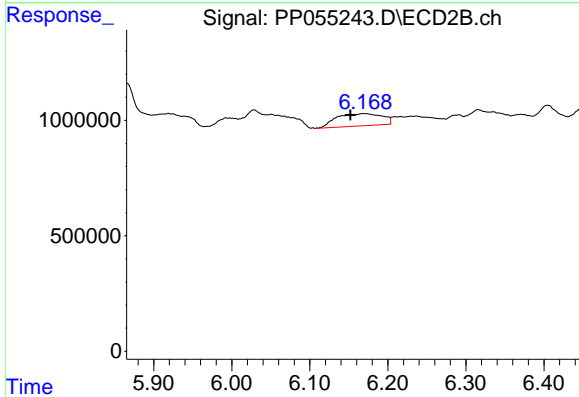
R.T.: 6.659 min
 Delta R.T.: -0.009 min
 Response: 1017776
 Conc: 10.74 ng/ml



#31 AR-1260-1

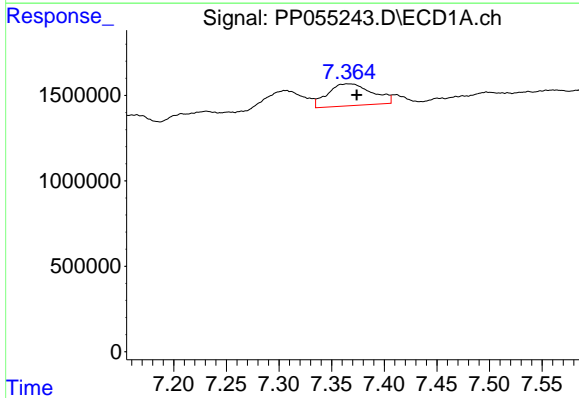
R.T.: 7.105 min
 Delta R.T.: -0.011 min
 Response: 695659
 Conc: 7.30 ng/ml

Instrument :
 ECD_P
 ClientSampleId :



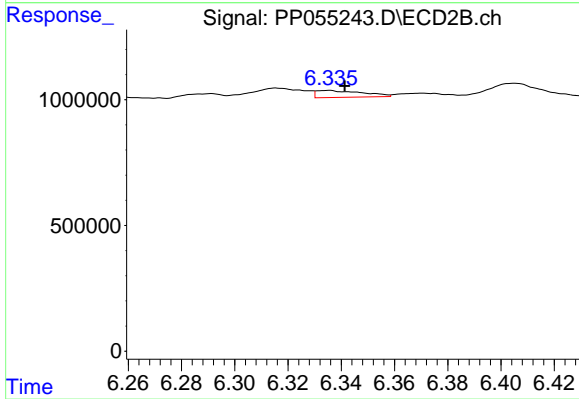
#31 AR-1260-1

R.T.: 6.169 min
 Delta R.T.: 0.017 min
 Response: 2152395
 Conc: 27.76 ng/ml



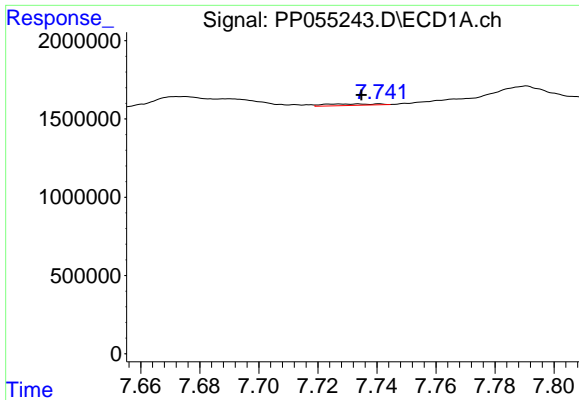
#32 AR-1260-2

R.T.: 7.365 min
 Delta R.T.: -0.008 min
 Response: 3783771
 Conc: 33.62 ng/ml



#32 AR-1260-2

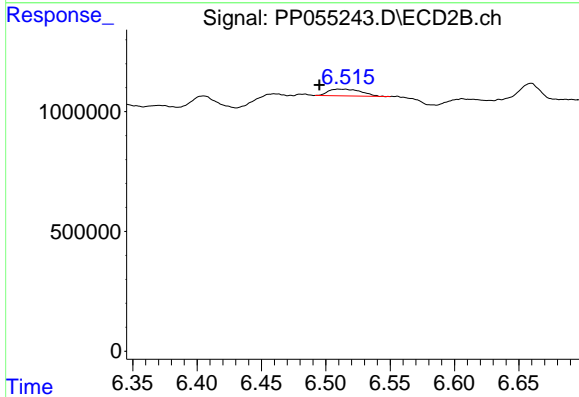
R.T.: 6.335 min
 Delta R.T.: -0.006 min
 Response: 332622
 Conc: 3.70 ng/ml



#33 AR-1260-3

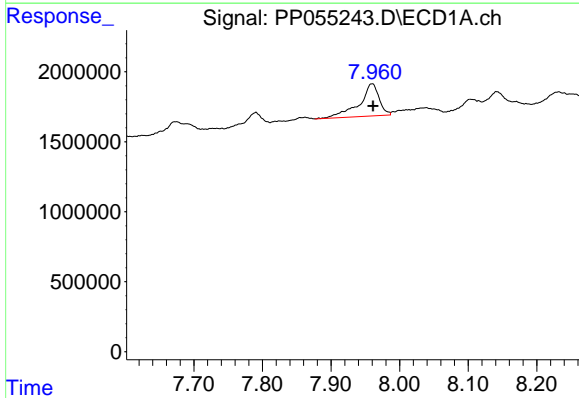
R.T.: 7.733 min
 Delta R.T.: -0.001 min
 Response: 111931
 Conc: 1.39 ng/ml

Instrument :
 ECD_P
 ClientSampleId :



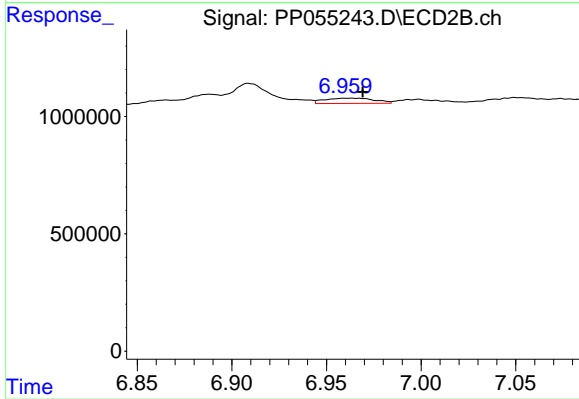
#33 AR-1260-3

R.T.: 6.510 min
 Delta R.T.: 0.015 min
 Response: 493792
 Conc: 5.82 ng/ml



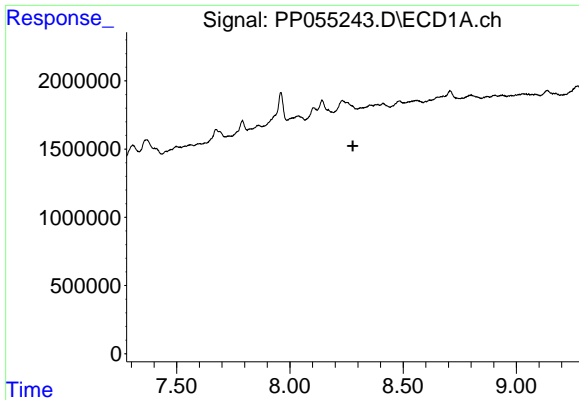
#34 AR-1260-4

R.T.: 7.960 min
 Delta R.T.: -0.002 min
 Response: 4674083
 Conc: 48.15 ng/ml



#34 AR-1260-4

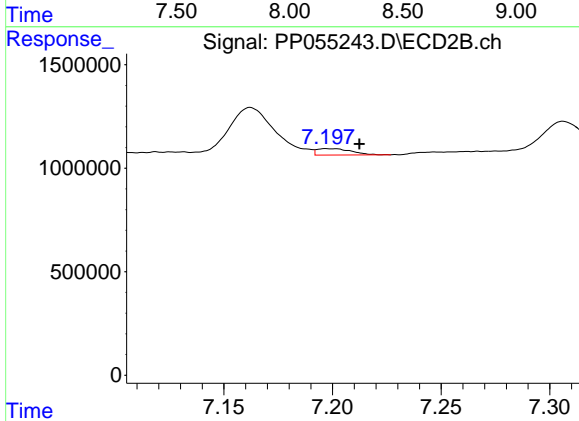
R.T.: 6.962 min
 Delta R.T.: -0.007 min
 Response: 410849
 Conc: 5.74 ng/ml



#35 AR-1260-5

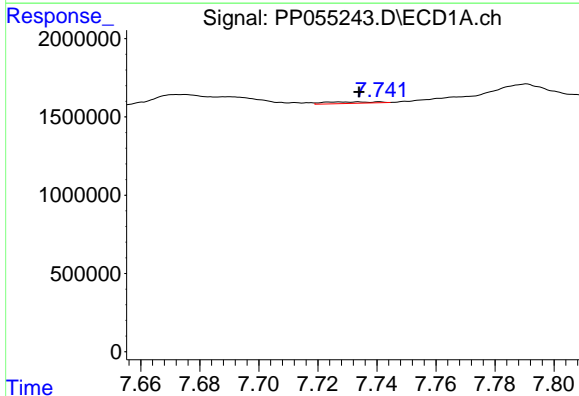
R.T.: 0.000 min
 Exp R.T.: 8.278 min
 Response: 0
 Conc: N.D.

Instrument :
 ECD_P
 ClientSampleId :



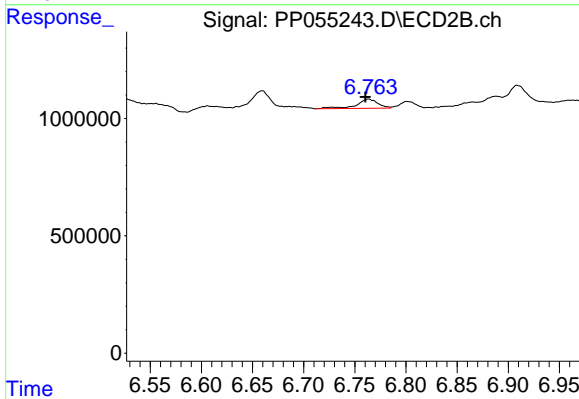
#35 AR-1260-5

R.T.: 7.197 min
 Delta R.T.: -0.015 min
 Response: 338134
 Conc: 2.20 ng/ml



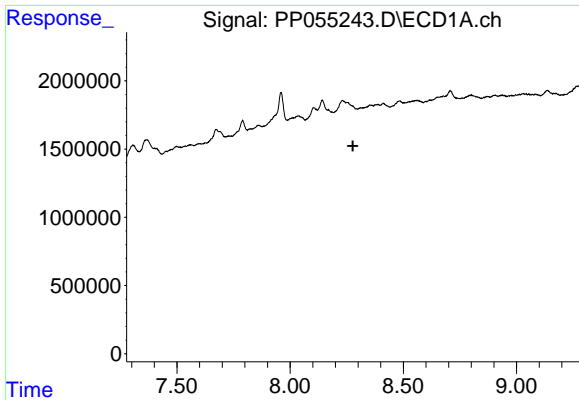
#36 AR-1262-1

R.T.: 7.733 min
 Delta R.T.: 0.000 min
 Response: 111931
 Conc: 0.95 ng/ml



#36 AR-1262-1

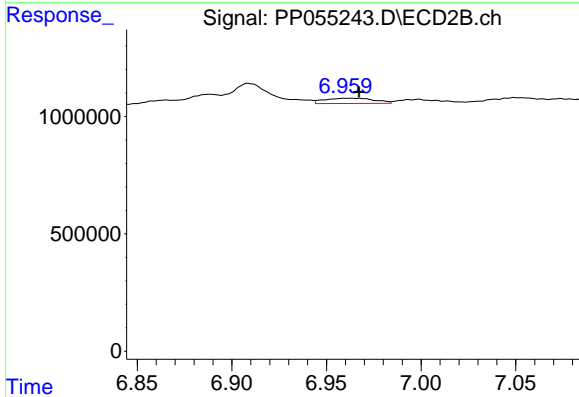
R.T.: 6.763 min
 Delta R.T.: 0.003 min
 Response: 566297
 Conc: 13.18 ng/ml



#37 AR-1262-2

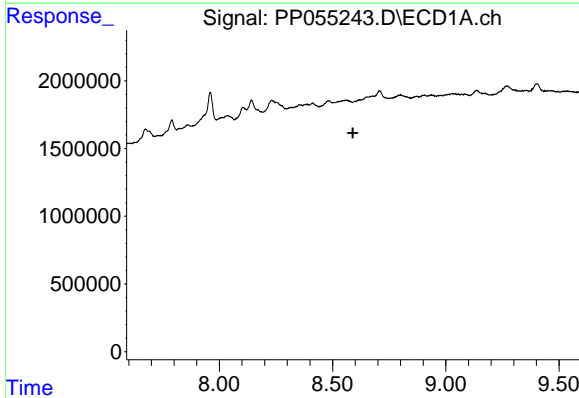
R.T.: 0.000 min
 Exp R.T.: 8.277 min
 Response: 0
 Conc: N.D.

Instrument :
 ECD_P
 ClientSampleId :



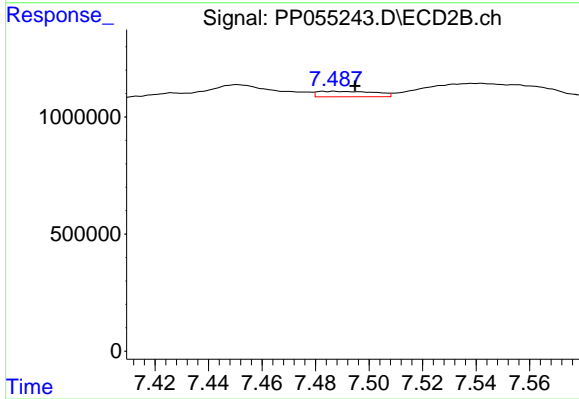
#37 AR-1262-2

R.T.: 6.962 min
 Delta R.T.: -0.005 min
 Response: 410849
 Conc: 4.44 ng/ml



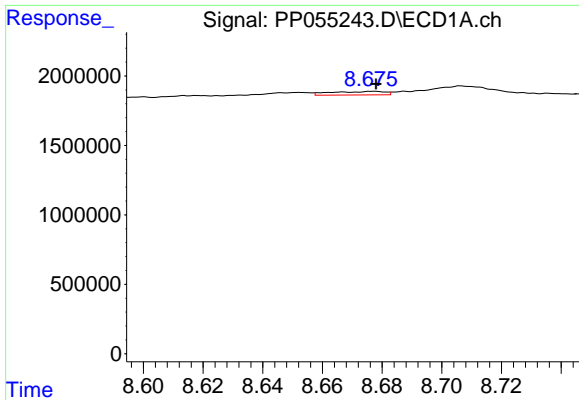
#38 AR-1262-3

R.T.: 8.619 min
 Delta R.T.: 0.029 min
 Response: -140991
 Conc: N.D.



#38 AR-1262-3

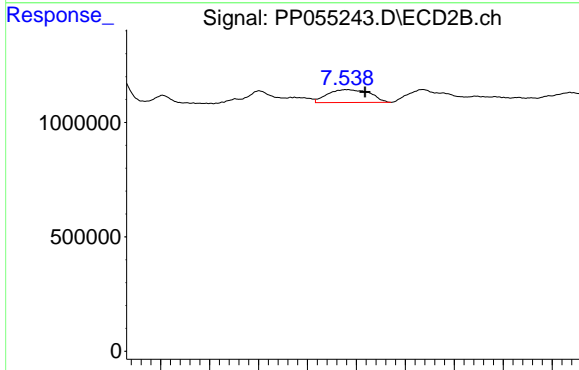
R.T.: 7.487 min
 Delta R.T.: -0.008 min
 Response: 346751
 Conc: 4.76 ng/ml



#39 AR-1262-4

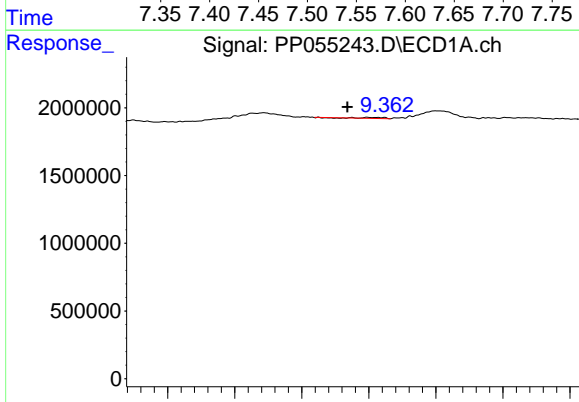
R.T.: 8.677 min
 Delta R.T.: 0.000 min
 Response: 322871
 Conc: 4.20 ng/ml

Instrument :
 ECD_P
 ClientSampleId :



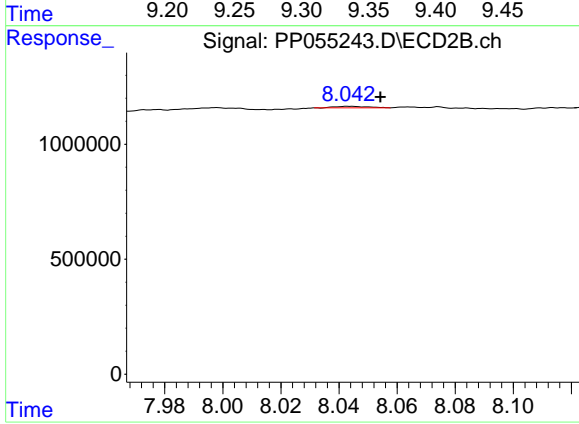
#39 AR-1262-4

R.T.: 7.541 min
 Delta R.T.: -0.018 min
 Response: 1688828
 Conc: 12.91 ng/ml



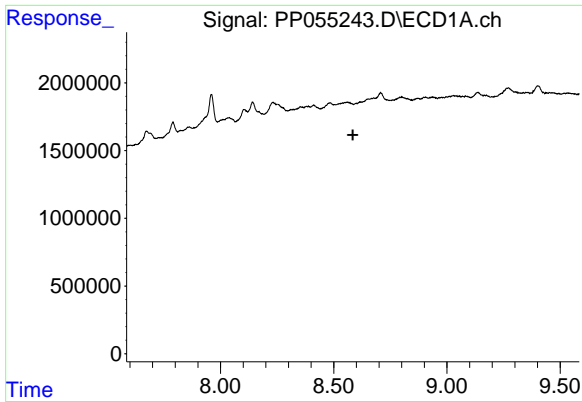
#40 AR-1262-5

R.T.: 9.361 min
 Delta R.T.: 0.027 min
 Response: 73954
 Conc: 1.03 ng/ml



#40 AR-1262-5

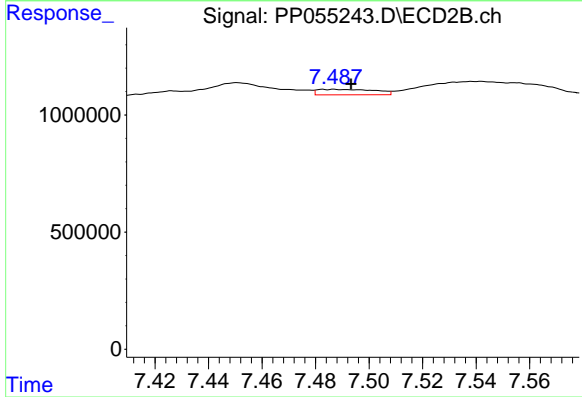
R.T.: 8.044 min
 Delta R.T.: -0.011 min
 Response: 50678
 Conc: 0.85 ng/ml



#41 AR-1268-1

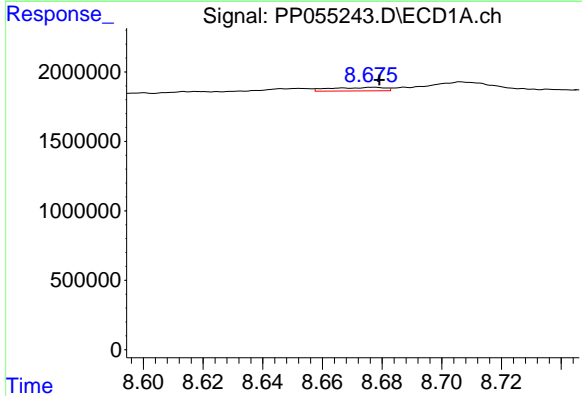
R.T.: 0.000 min
 Exp R.T.: 8.585 min
 Response: 0
 Conc: N.D.

Instrument :
 ECD_P
 ClientSampleId :



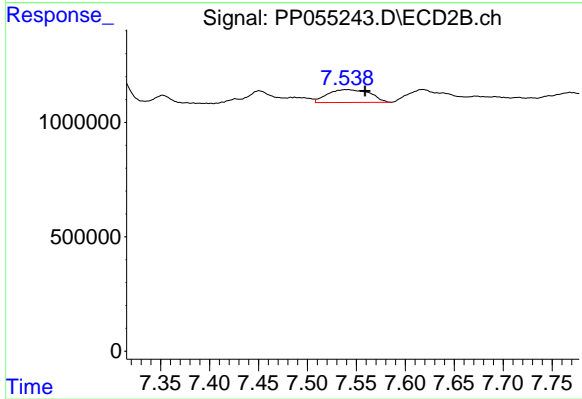
#41 AR-1268-1

R.T.: 7.487 min
 Delta R.T.: -0.007 min
 Response: 346751
 Conc: 1.60 ng/ml



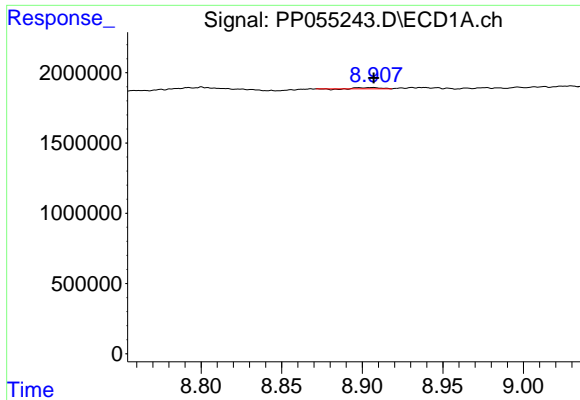
#42 AR-1268-2

R.T.: 8.677 min
 Delta R.T.: -0.002 min
 Response: 322871
 Conc: 1.42 ng/ml



#42 AR-1268-2

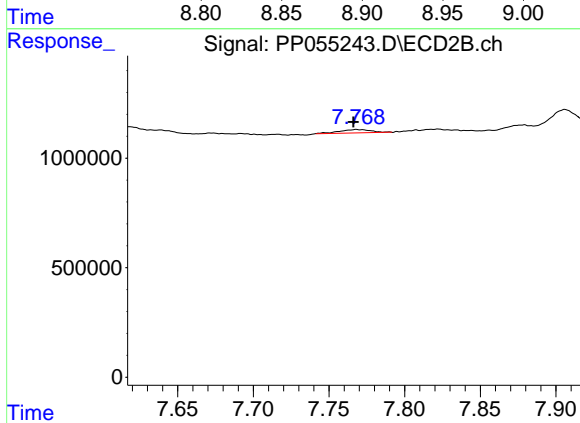
R.T.: 7.541 min
 Delta R.T.: -0.018 min
 Response: 1688828
 Conc: 8.65 ng/ml



#43 AR-1268-3

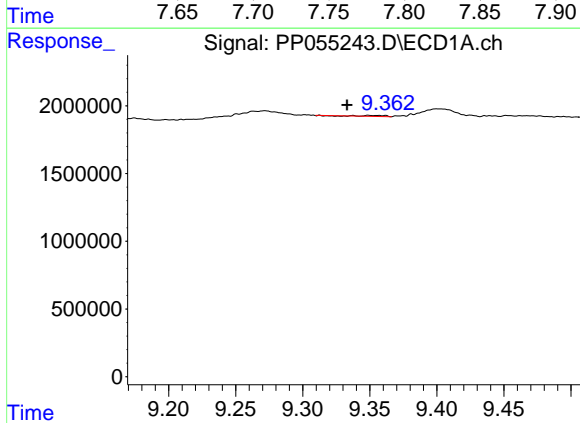
R.T.: 8.907 min
 Delta R.T.: 0.000 min
 Response: 59668
 Conc: 0.30 ng/ml

Instrument :
 ECD_P
 ClientSampleId :



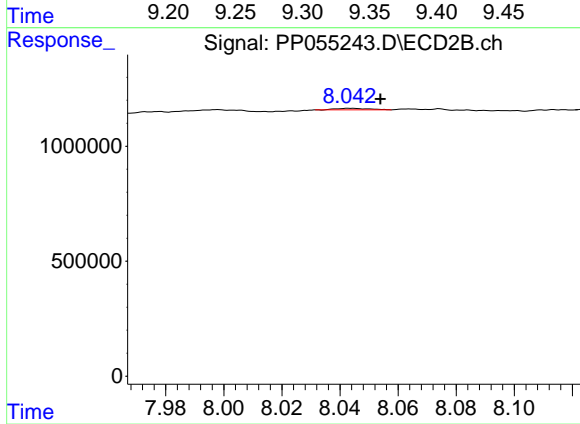
#43 AR-1268-3

R.T.: 7.768 min
 Delta R.T.: 0.002 min
 Response: 216750
 Conc: 1.26 ng/ml



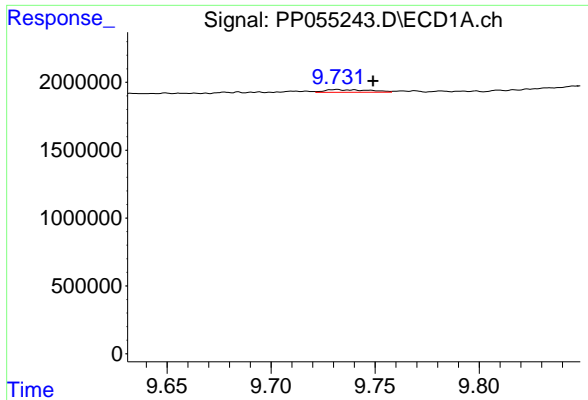
#44 AR-1268-4

R.T.: 9.361 min
 Delta R.T.: 0.028 min
 Response: 73954
 Conc: 0.94 ng/ml



#44 AR-1268-4

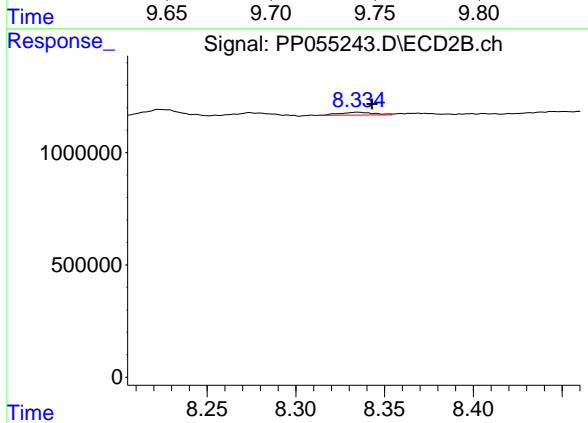
R.T.: 8.044 min
 Delta R.T.: -0.010 min
 Response: 50678
 Conc: 0.79 ng/ml



#45 AR-1268-5

R.T.: 9.731 min
 Delta R.T.: -0.018 min
 Response: 282010
 Conc: 0.44 ng/ml

Instrument :
 ECD_P
 ClientSampleId :



#45 AR-1268-5

R.T.: 8.335 min
 Delta R.T.: -0.008 min
 Response: 174425
 Conc: 0.33 ng/ml