

Data Path : Z:\pestpcbsrv\HPCHEM1\ECD_P\Data\PP020223\
 Data File : PP055260.D
 Signal(s) : Signal #1: ECD1A.ch Signal #2: ECD2B.ch
 Acq On : 02 Feb 2023 15:15
 Operator : YP\AJ
 Sample : 01389-03
 Misc :
 ALS Vial : 20 Sample Multiplier: 1

Instrument :
 ECD_P
 ClientSampleId :

Integration File signal 1: autoint1.e
 Integration File signal 2: autoint2.e
 Quant Time: Feb 02 23:49:29 2023
 Quant Method : Z:\pestpcbsrv\HPCHEM1\ECD_P\methods\PP012423.M
 Quant Title : GC EXTRACTABLES
 QLast Update : Tue Jan 24 03:37:45 2023
 Response via : Initial Calibration
 Integrator: ChemStation

Volume Inj. : 2 µl
 Signal #1 Phase : ZB-MR1 Signal #2 Phase: ZB-MR2
 Signal #1 Info : 30Mx0.32mmx 0.50µ Signal #2 Info : 30M x 0.32mm x 0.25µm

Compound	RT#1	RT#2	Resp#1	Resp#2	ng/ml	ng/ml

System Monitoring Compounds						
1) SA Tetrachlo...	4.328	3.574	33394467	29501571	19.206	19.652
2) SA Decachlor...	10.082	8.587	33622799	28488916	19.416	21.094
Target Compounds						
3) L1 AR-1016-1	5.507	4.678	40923	336368	0.609	6.796 #
4) L1 AR-1016-2	5.522	4.678	286667	336368	2.991	4.859 #
5) L1 AR-1016-3	5.586	4.851	288536	99587	4.824	2.677 #
6) L1 AR-1016-4	5.683	4.906	-31368	84982	N.D.	2.705 #
7) L1 AR-1016-5	5.985	0.000	117112	0	2.311	N.D. #
8) L2 AR-1221-1	4.535	0.000	16533697	0	703.113	N.D. #
9) L2 AR-1221-2	4.633	3.855f	759278	12089696	42.735	815.639 #
10) L2 AR-1221-3	4.704	3.930f	253023	576572	4.702	12.780 #
11) L3 AR-1232-1	4.704	3.930f	253023	576572	5.701	15.642 #
12) L3 AR-1232-2	5.247	4.678	150663	336368	6.662	10.530 #
13) L3 AR-1232-3	5.522	4.851	286667	99587	6.527	5.974
14) L3 AR-1232-4	5.683	4.935	-31368	64545	N.D.	4.003 #
15) L3 AR-1232-5	5.771	0.000	76524	0	4.371	N.D. #
16) L4 AR-1242-1	5.507	4.678	40923	336368	0.731	8.212 #
17) L4 AR-1242-2	5.522	4.678	286667	336368	3.591	5.891 #
18) L4 AR-1242-3	5.586	4.851	288536	99587	5.810	3.226 #
19) L4 AR-1242-4	5.683	4.935	-31368	64545	N.D.	1.987 #
20) L4 AR-1242-5	6.430	5.457	166884	232084	3.753	6.210 #
21) L5 AR-1248-1	5.499	4.678	140962	336368	3.380	10.849 #
22) L5 AR-1248-2	5.771	4.906	76524	84982	1.204	1.858 #
23) L5 AR-1248-3	5.985	4.935	117112	64545	1.693	1.354
24) L5 AR-1248-4	6.392	0.000	250343	0	3.301	N.D. #
25) L5 AR-1248-5	6.430	0.000	166884	0	2.262	N.D. #
26) L6 AR-1254-1	0.000	5.457	0	232084	N.D.	2.874 #
27) L6 AR-1254-2	6.577	5.611	121849	85915	1.007	1.201
28) L6 AR-1254-3	6.950	6.013	365534	396681	2.984	3.561
29) L6 AR-1254-4	7.235	6.242	66062	134988	0.750	2.195 #
30) L6 AR-1254-5	0.000	6.664	0	276799	N.D.	2.920 #
31) L7 AR-1260-1	7.107	6.140	744930	104604	7.815	1.349 #
32) L7 AR-1260-2	7.382	6.333	1217206	87125	10.815	0.969 #
33) L7 AR-1260-3	0.000	6.472f	0	187488	N.D.	2.208 #
34) L7 AR-1260-4	7.948	6.958	862325	96471	8.883	1.347 #
35) L7 AR-1260-5	8.268	7.206	541904	136577	3.047	0.888 #
36) L8 AR-1262-1	0.000	6.780f	0	99064	N.D.	2.306 #
37) L8 AR-1262-2	8.268	6.958	541904	96471	2.691	1.042 #
38) L8 AR-1262-3	8.564f	7.493	41576	101506	0.299	1.393 #
39) L8 AR-1262-4	8.683	7.554	90896	106413	1.182	0.814 #
41) L9 AR-1268-1	8.564f	7.493	41576	101506	0.170	0.469 #
42) L9 AR-1268-2	8.683	7.554	90896	106413	0.400	0.545 #

Data Path : Z:\pestpcbsrv\HPCHEM1\ECD_P\Data\PP020223\
 Data File : PP055260.D
 Signal(s) : Signal #1: ECD1A.ch Signal #2: ECD2B.ch
 Acq On : 02 Feb 2023 15:15
 Operator : YP\AJ
 Sample : 01389-03
 Misc :
 ALS Vial : 20 Sample Multiplier: 1

Instrument :
 ECD_P
 ClientSampleId :

Integration File signal 1: autoint1.e
 Integration File signal 2: autoint2.e
 Quant Time: Feb 02 23:49:29 2023
 Quant Method : Z:\pestpcbsrv\HPCHEM1\ECD_P\methods\PP012423.M
 Quant Title : GC EXTRACTABLES
 QLast Update : Tue Jan 24 03:37:45 2023
 Response via : Initial Calibration
 Integrator: ChemStation

Volume Inj. : 2 µl
 Signal #1 Phase : ZB-MR1 Signal #2 Phase: ZB-MR2
 Signal #1 Info : 30Mx0.32mmx 0.50µ Signal #2 Info : 30M x 0.32mm x 0.25µm

	Compound	RT#1	RT#2	Resp#1	Resp#2	ng/ml	ng/ml
43)	L9 AR-1268-3	8.907	7.758	56525	51569	0.283	0.300
45)	L9 AR-1268-5	9.741	8.336	212917	108288	0.335	0.206 #

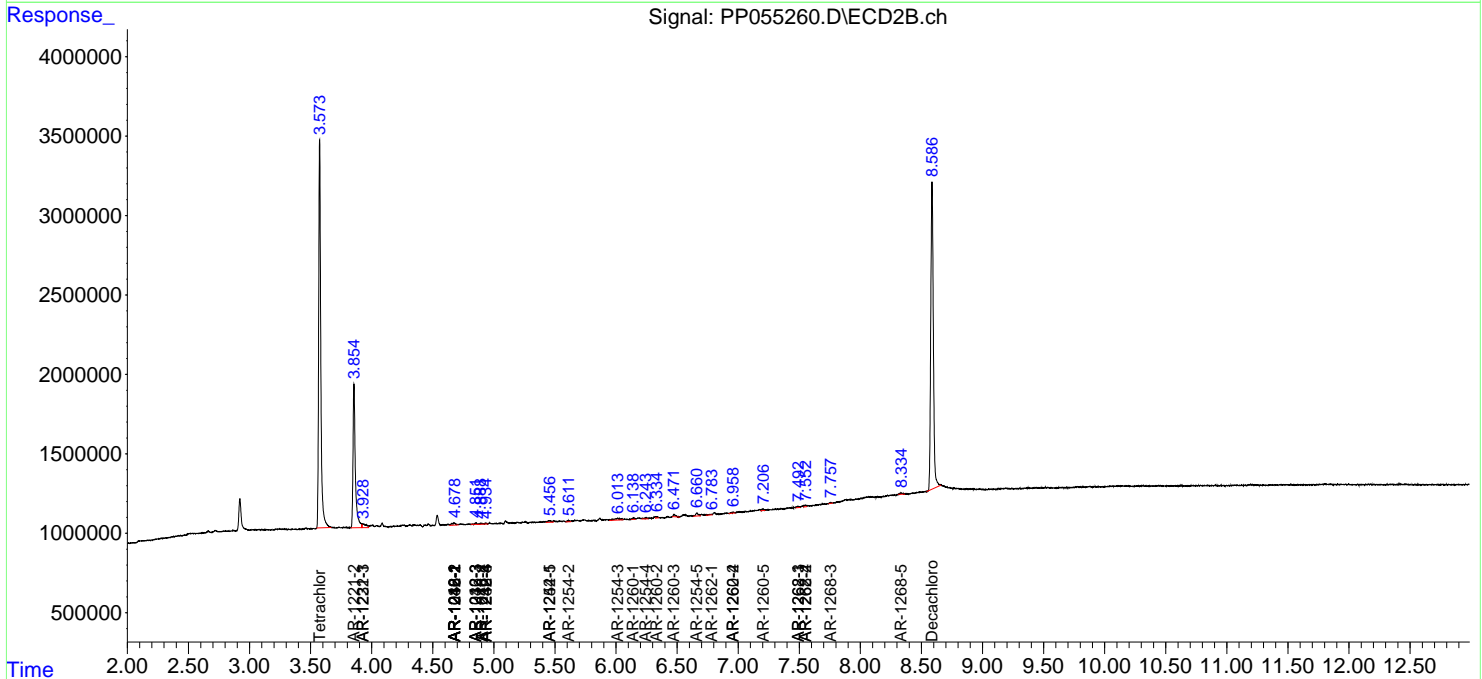
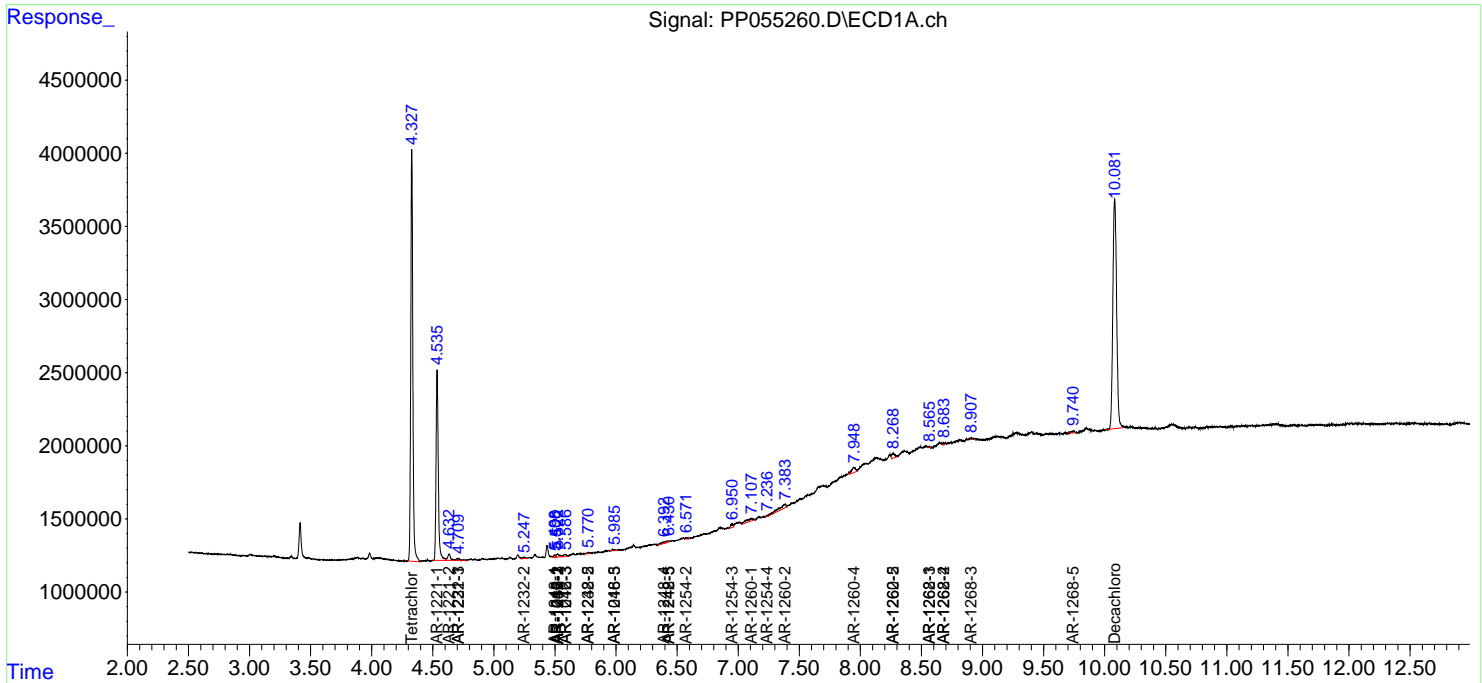
(f)=RT Delta > 1/2 Window (#)=Amounts differ by > 25% (m)=manual int.

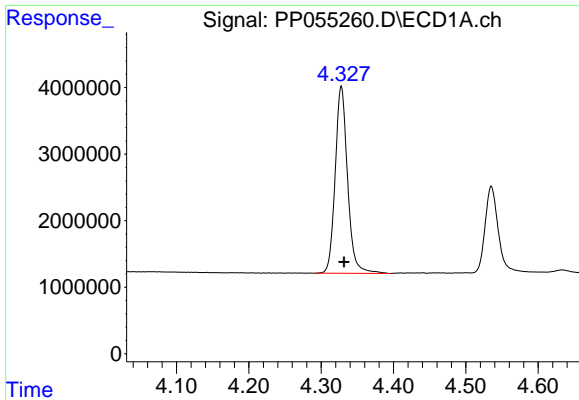
Data Path : Z:\pestpcbsrv\HPCHEM1\ECD_P\Data\PP020223\
 Data File : PP055260.D
 Signal(s) : Signal #1: ECD1A.ch Signal #2: ECD2B.ch
 Acq On : 02 Feb 2023 15:15
 Operator : YP\AJ
 Sample : 01389-03
 Misc :
 ALS Vial : 20 Sample Multiplier: 1

Instrument :
 ECD_P
 ClientSampleId :

Integration File signal 1: autoint1.e
 Integration File signal 2: autoint2.e
 Quant Time: Feb 02 23:49:29 2023
 Quant Method : Z:\pestpcbsrv\HPCHEM1\ECD_P\methods\PP012423.M
 Quant Title : GC EXTRACTABLES
 QLast Update : Tue Jan 24 03:37:45 2023
 Response via : Initial Calibration
 Integrator: ChemStation

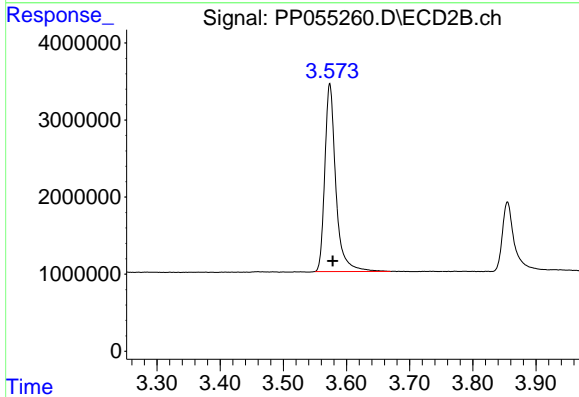
Volume Inj. : 2 µl
 Signal #1 Phase : ZB-MR1 Signal #2 Phase: ZB-MR2
 Signal #1 Info : 30Mx0.32mmx 0.50µ Signal #2 Info : 30M x 0.32mm x 0.25µm



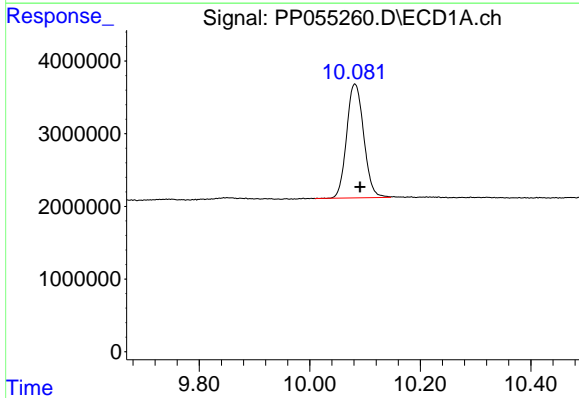


#1 Tetrachloro-m-xylene
 R.T.: 4.328 min
 Delta R.T.: -0.004 min
 Response: 33394467
 Conc: 19.21 ng/ml

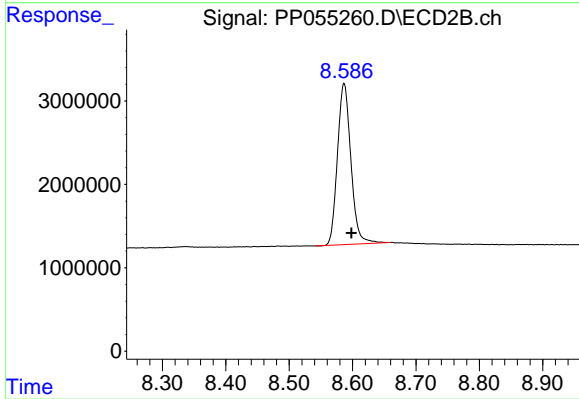
Instrument :
 ECD_P
 ClientSampleId :



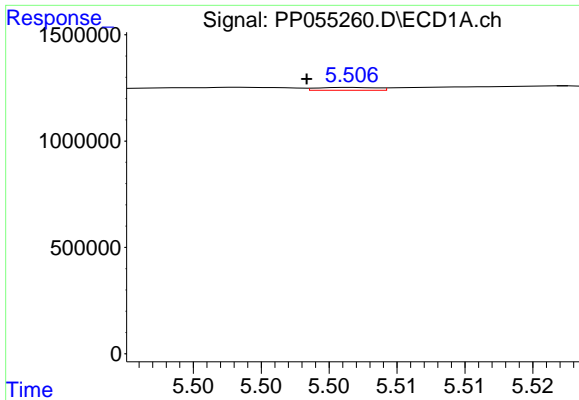
#1 Tetrachloro-m-xylene
 R.T.: 3.574 min
 Delta R.T.: -0.005 min
 Response: 29501571
 Conc: 19.65 ng/ml



#2 Decachlorobiphenyl
 R.T.: 10.082 min
 Delta R.T.: -0.009 min
 Response: 33622799
 Conc: 19.42 ng/ml



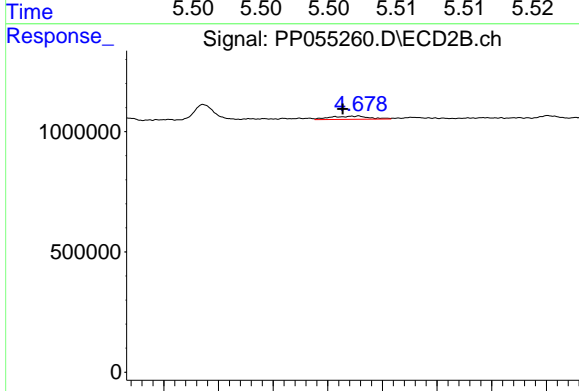
#2 Decachlorobiphenyl
 R.T.: 8.587 min
 Delta R.T.: -0.012 min
 Response: 28488916
 Conc: 21.09 ng/ml



#3 AR-1016-1

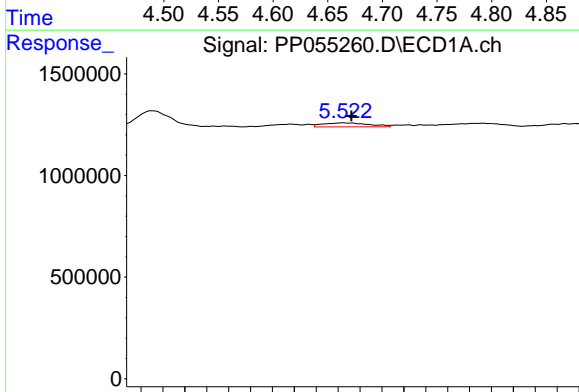
R.T.: 5.507 min
 Delta R.T.: 0.004 min
 Response: 40923
 Conc: 0.61 ng/ml

Instrument :
 ECD_P
 ClientSampleId :



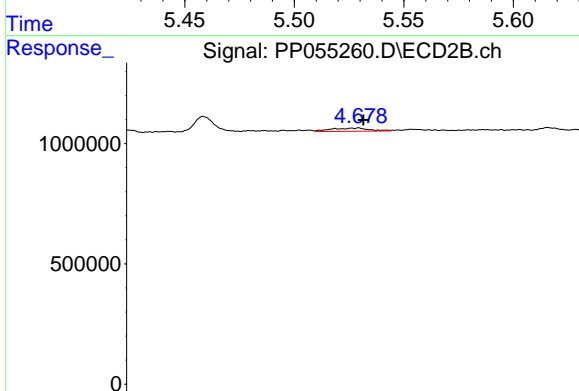
#3 AR-1016-1

R.T.: 4.678 min
 Delta R.T.: 0.015 min
 Response: 336368
 Conc: 6.80 ng/ml



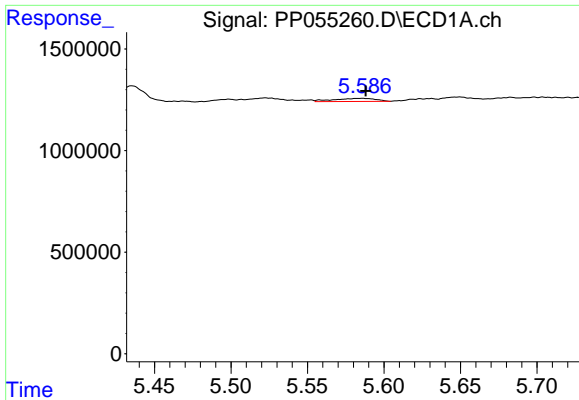
#4 AR-1016-2

R.T.: 5.522 min
 Delta R.T.: -0.004 min
 Response: 286667
 Conc: 2.99 ng/ml



#4 AR-1016-2

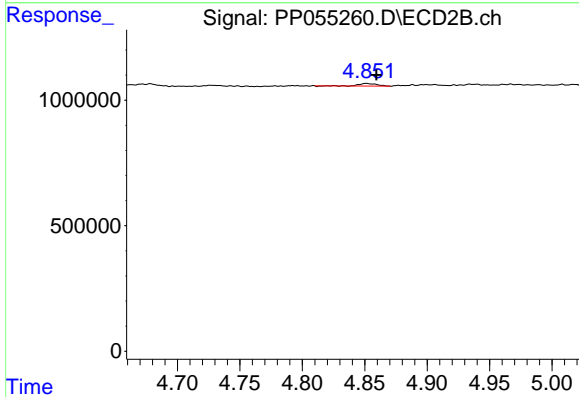
R.T.: 4.678 min
 Delta R.T.: -0.004 min
 Response: 336368
 Conc: 4.86 ng/ml



#5 AR-1016-3

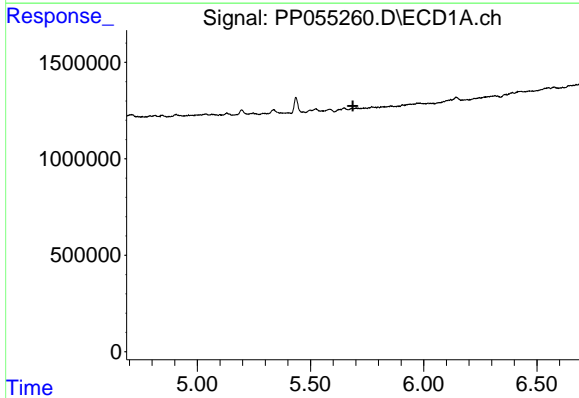
R.T.: 5.586 min
 Delta R.T.: -0.003 min
 Response: 288536
 Conc: 4.82 ng/ml

Instrument :
 ECD_P
 ClientSampleId :



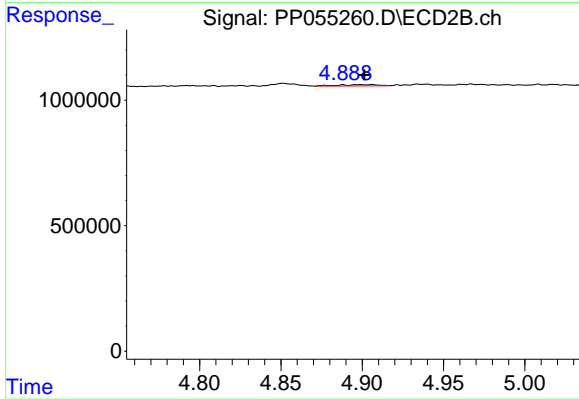
#5 AR-1016-3

R.T.: 4.851 min
 Delta R.T.: -0.008 min
 Response: 99587
 Conc: 2.68 ng/ml



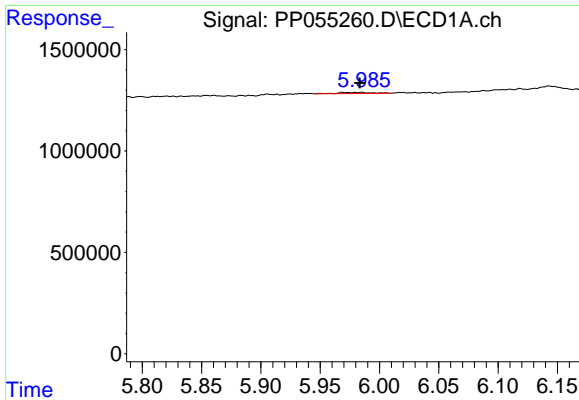
#6 AR-1016-4

R.T.: 5.683 min
 Delta R.T.: -0.004 min
 Response: -31368
 Conc: N.D.



#6 AR-1016-4

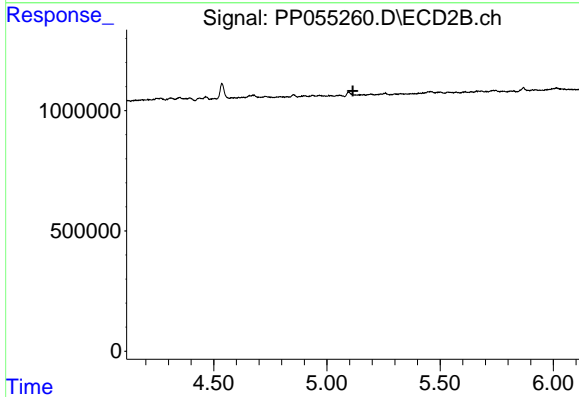
R.T.: 4.906 min
 Delta R.T.: 0.004 min
 Response: 84982
 Conc: 2.70 ng/ml



#7 AR-1016-5

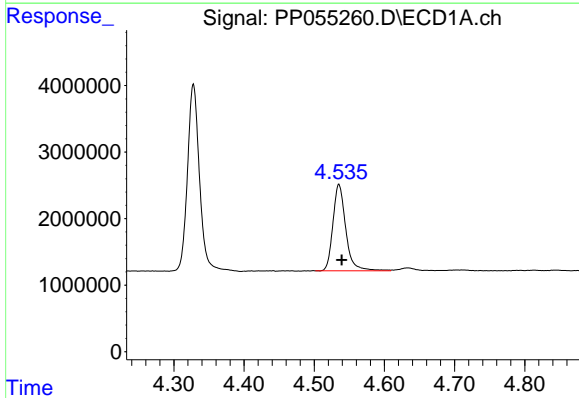
R.T.: 5.985 min
 Delta R.T.: 0.002 min
 Response: 117112
 Conc: 2.31 ng/ml

Instrument :
 ECD_P
 ClientSampleId :



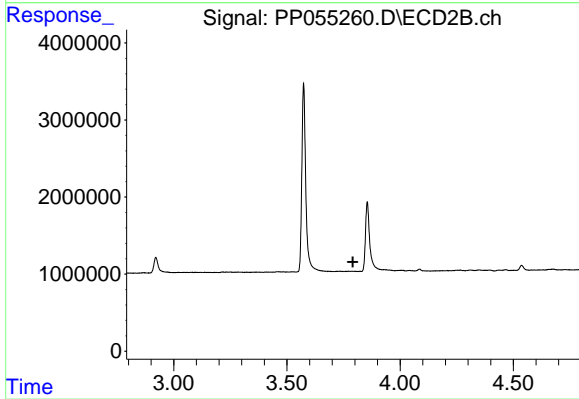
#7 AR-1016-5

R.T.: 0.000 min
 Exp R.T. : 5.115 min
 Response: 0
 Conc: N.D.



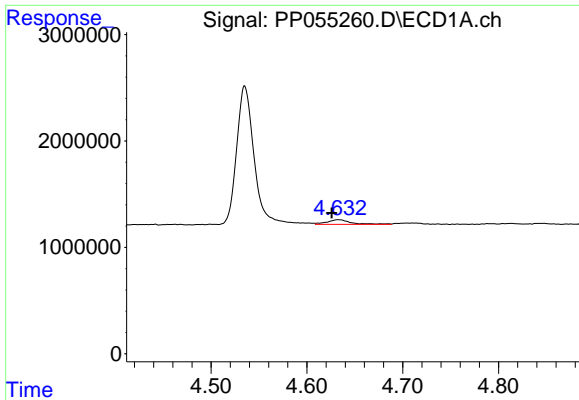
#8 AR-1221-1

R.T.: 4.535 min
 Delta R.T.: -0.004 min
 Response: 16533697
 Conc: 703.11 ng/ml



#8 AR-1221-1

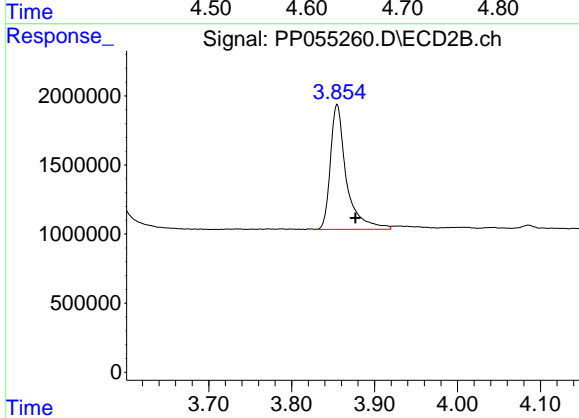
R.T.: 0.000 min
 Exp R.T. : 3.791 min
 Response: 0
 Conc: N.D.



#9 AR-1221-2

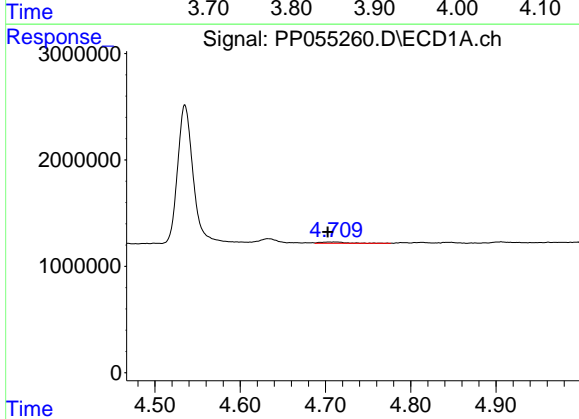
R.T.: 4.633 min
 Delta R.T.: 0.007 min
 Response: 759278
 Conc: 42.74 ng/ml

Instrument :
 ECD_P
 ClientSampleId :



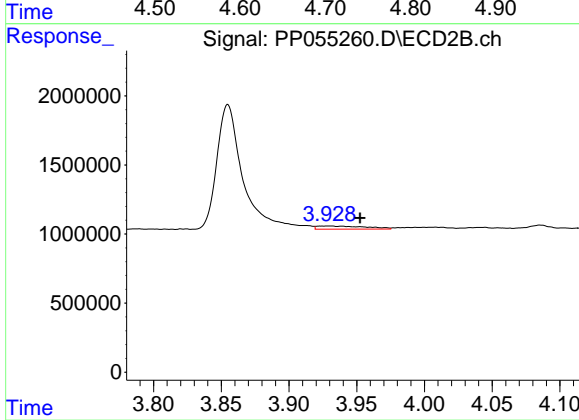
#9 AR-1221-2

R.T.: 3.855 min
 Delta R.T.: -0.022 min
 Response: 12089696
 Conc: 815.64 ng/ml



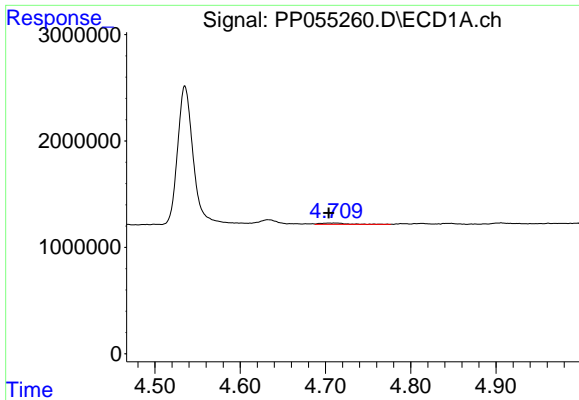
#10 AR-1221-3

R.T.: 4.704 min
 Delta R.T.: 0.001 min
 Response: 253023
 Conc: 4.70 ng/ml



#10 AR-1221-3

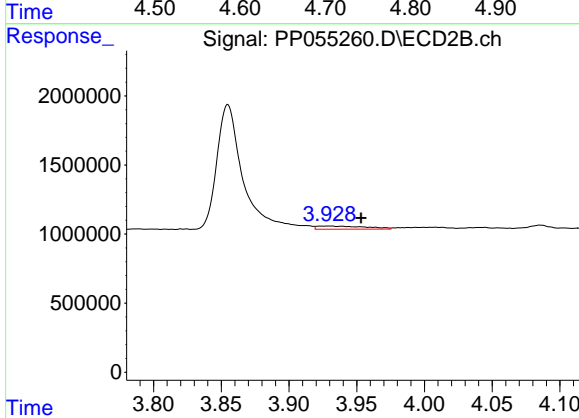
R.T.: 3.930 min
 Delta R.T.: -0.023 min
 Response: 576572
 Conc: 12.78 ng/ml



#11 AR-1232-1

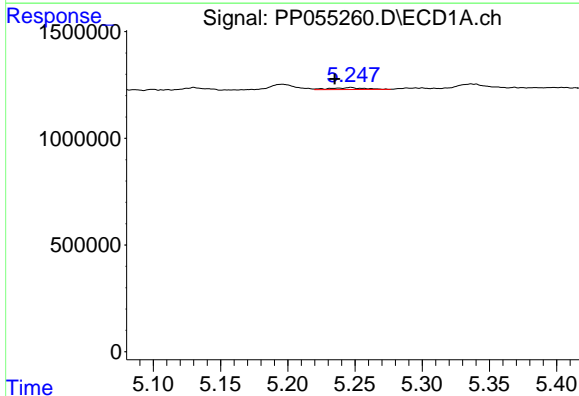
R.T.: 4.704 min
 Delta R.T.: 0.000 min
 Response: 253023
 Conc: 5.70 ng/ml

Instrument :
 ECD_P
 ClientSampleId :



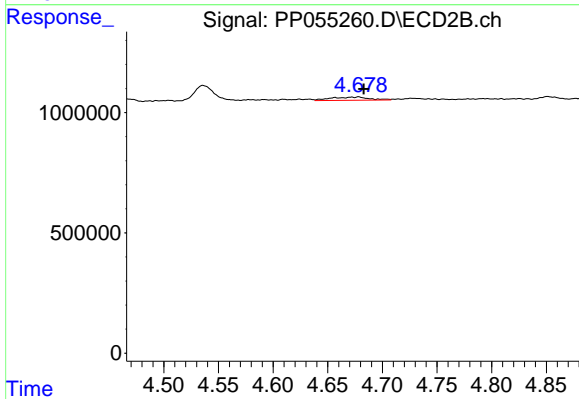
#11 AR-1232-1

R.T.: 3.930 min
 Delta R.T.: -0.024 min
 Response: 576572
 Conc: 15.64 ng/ml



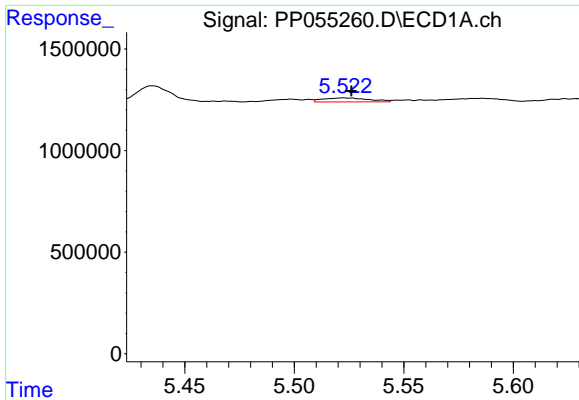
#12 AR-1232-2

R.T.: 5.247 min
 Delta R.T.: 0.012 min
 Response: 150663
 Conc: 6.66 ng/ml



#12 AR-1232-2

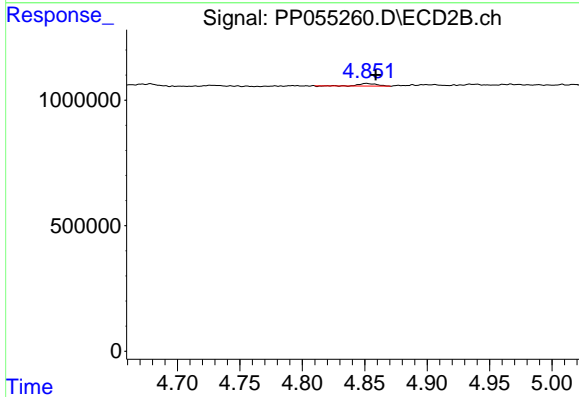
R.T.: 4.678 min
 Delta R.T.: -0.005 min
 Response: 336368
 Conc: 10.53 ng/ml



#13 AR-1232-3

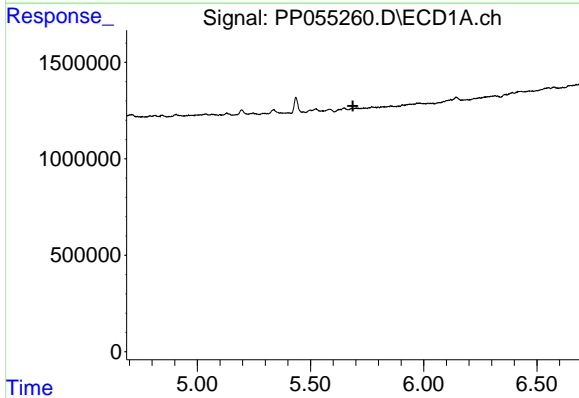
R.T.: 5.522 min
 Delta R.T.: -0.004 min
 Response: 286667
 Conc: 6.53 ng/ml

Instrument :
 ECD_P
 ClientSampleId :



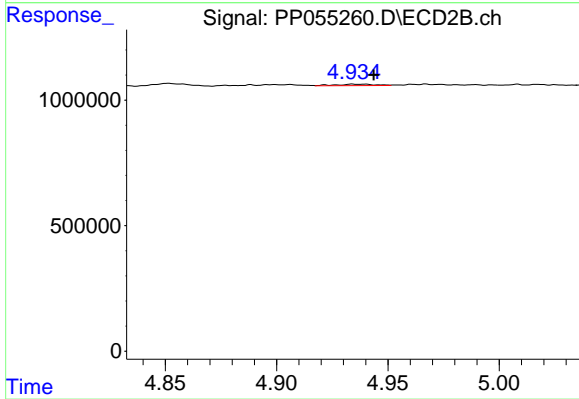
#13 AR-1232-3

R.T.: 4.851 min
 Delta R.T.: -0.008 min
 Response: 99587
 Conc: 5.97 ng/ml



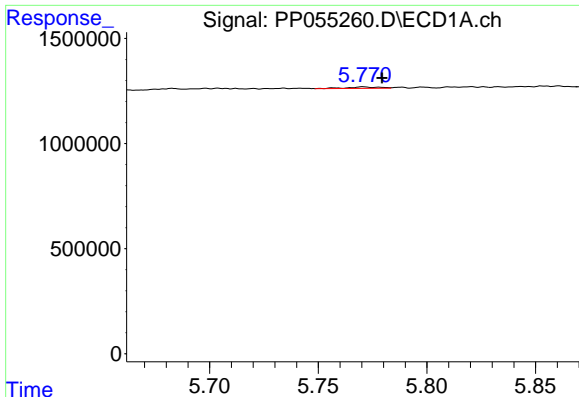
#14 AR-1232-4

R.T.: 5.683 min
 Delta R.T.: -0.005 min
 Response: -31368
 Conc: N.D.



#14 AR-1232-4

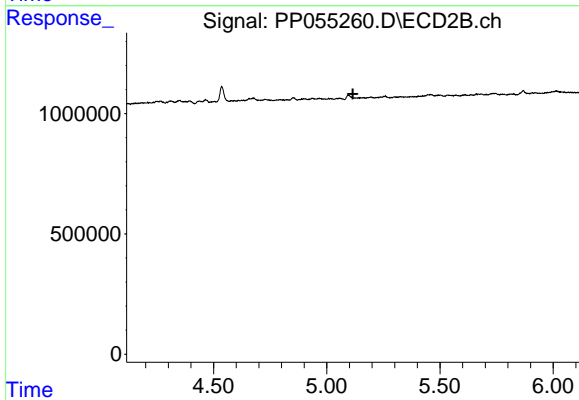
R.T.: 4.935 min
 Delta R.T.: -0.009 min
 Response: 64545
 Conc: 4.00 ng/ml



#15 AR-1232-5

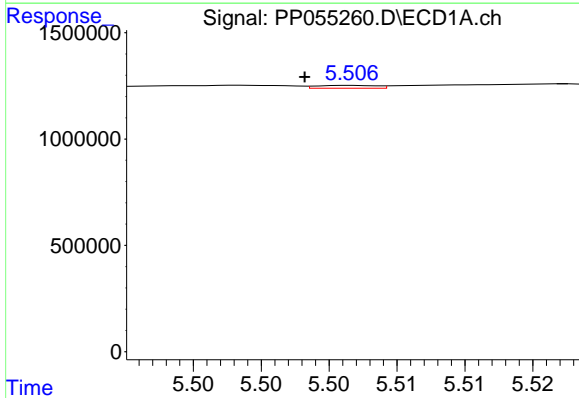
R.T.: 5.771 min
 Delta R.T.: -0.009 min
 Response: 76524
 Conc: 4.37 ng/ml

Instrument :
 ECD_P
 ClientSampleId :



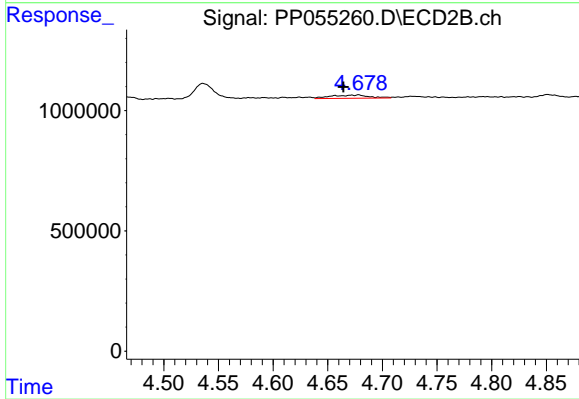
#15 AR-1232-5

R.T.: 0.000 min
 Exp R.T. : 5.115 min
 Response: 0
 Conc: N.D.



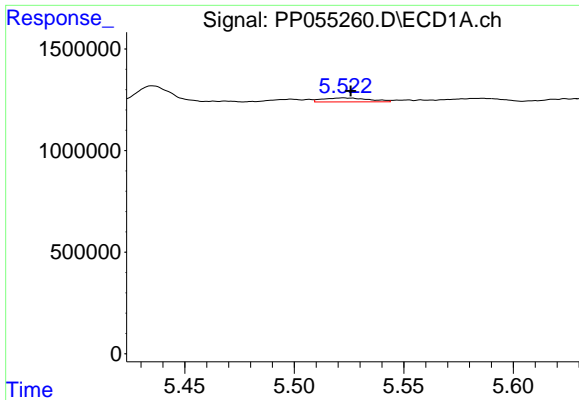
#16 AR-1242-1

R.T.: 5.507 min
 Delta R.T.: 0.004 min
 Response: 40923
 Conc: 0.73 ng/ml



#16 AR-1242-1

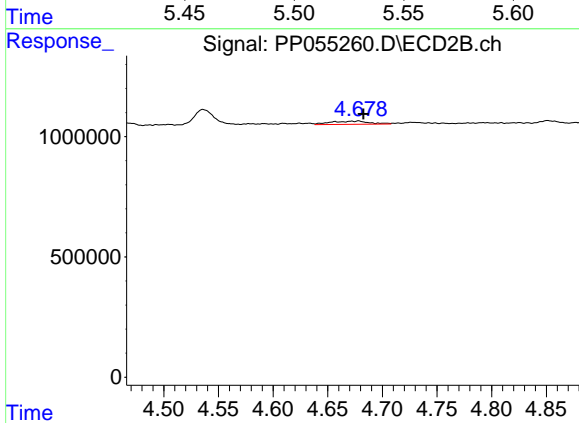
R.T.: 4.678 min
 Delta R.T.: 0.014 min
 Response: 336368
 Conc: 8.21 ng/ml



#17 AR-1242-2

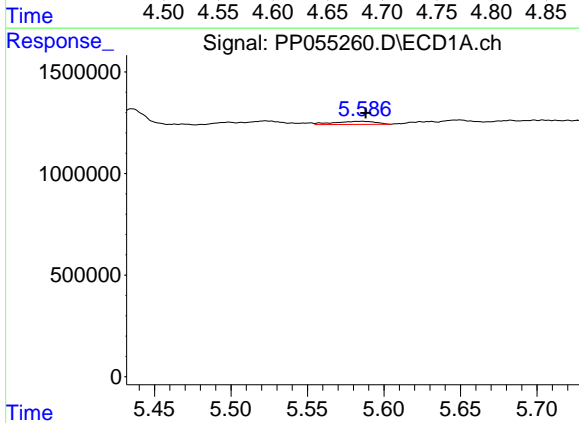
R.T.: 5.522 min
 Delta R.T.: -0.003 min
 Response: 286667
 Conc: 3.59 ng/ml

Instrument :
 ECD_P
 ClientSampleId :



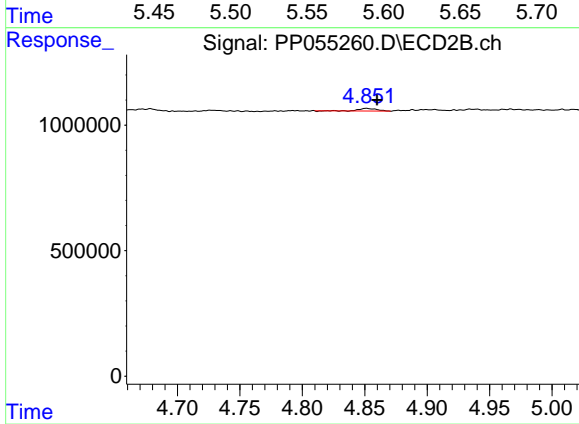
#17 AR-1242-2

R.T.: 4.678 min
 Delta R.T.: -0.004 min
 Response: 336368
 Conc: 5.89 ng/ml



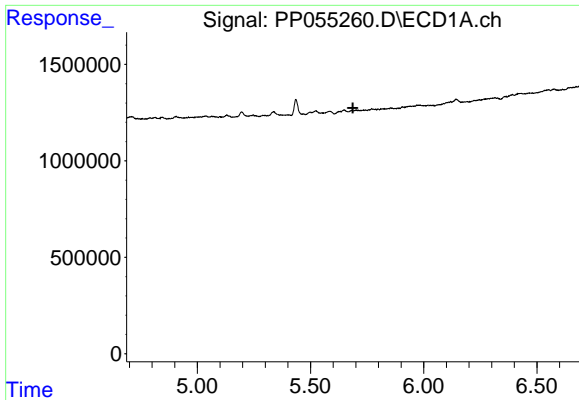
#18 AR-1242-3

R.T.: 5.586 min
 Delta R.T.: -0.003 min
 Response: 288536
 Conc: 5.81 ng/ml



#18 AR-1242-3

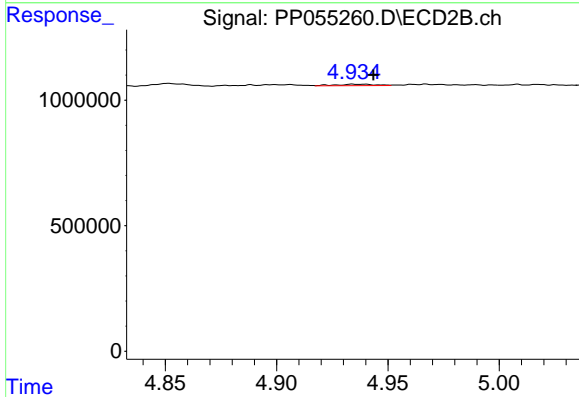
R.T.: 4.851 min
 Delta R.T.: -0.008 min
 Response: 99587
 Conc: 3.23 ng/ml



#19 AR-1242-4

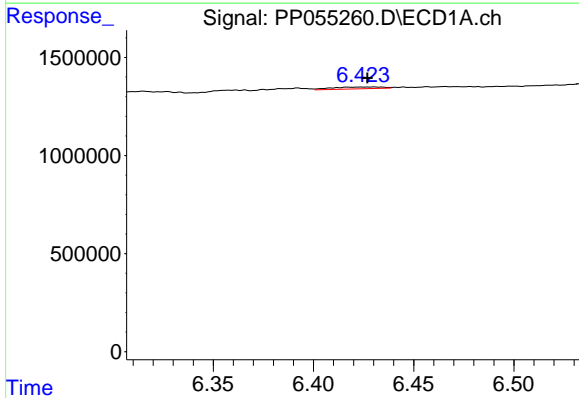
R.T.: 5.683 min
 Delta R.T.: -0.004 min
 Response: -31368
 Conc: N.D.

Instrument :
 ECD_P
 ClientSampleId :



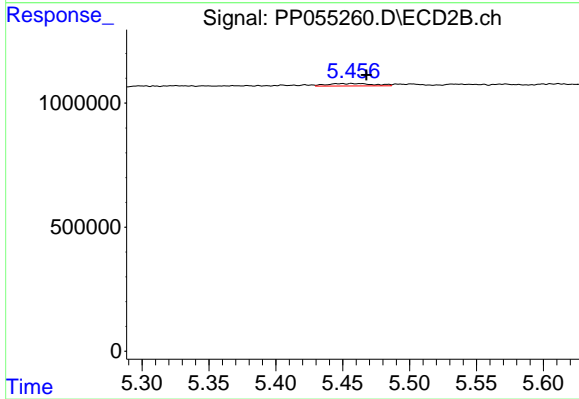
#19 AR-1242-4

R.T.: 4.935 min
 Delta R.T.: -0.009 min
 Response: 64545
 Conc: 1.99 ng/ml



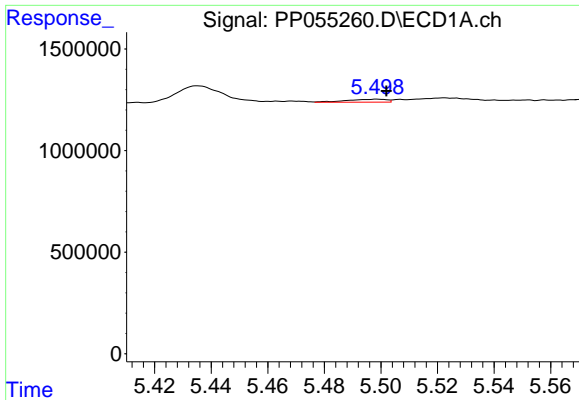
#20 AR-1242-5

R.T.: 6.430 min
 Delta R.T.: 0.003 min
 Response: 166884
 Conc: 3.75 ng/ml



#20 AR-1242-5

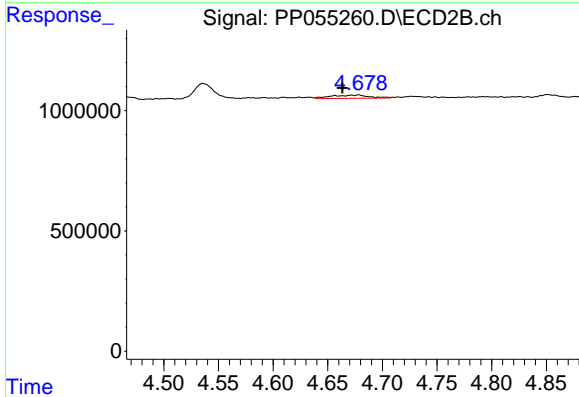
R.T.: 5.457 min
 Delta R.T.: -0.011 min
 Response: 232084
 Conc: 6.21 ng/ml



#21 AR-1248-1

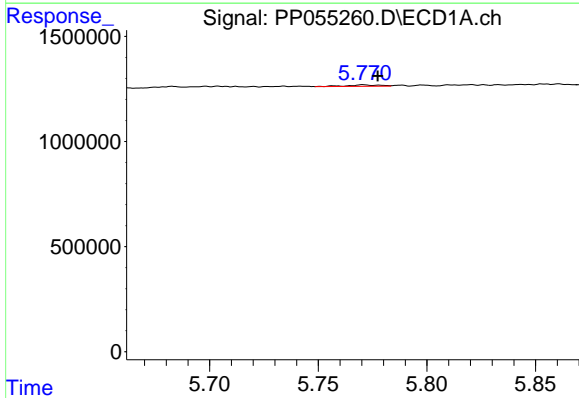
R.T.: 5.499 min
 Delta R.T.: -0.003 min
 Response: 140962
 Conc: 3.38 ng/ml

Instrument :
 ECD_P
 ClientSampleId :



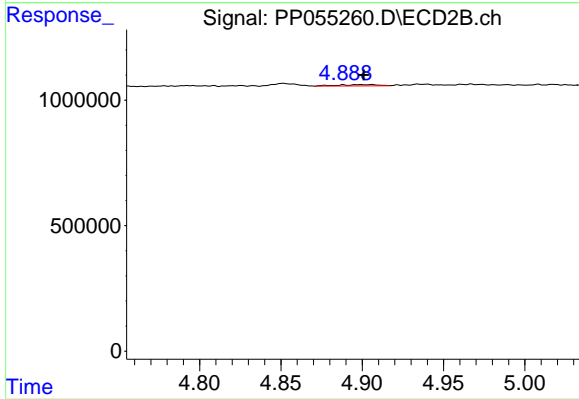
#21 AR-1248-1

R.T.: 4.678 min
 Delta R.T.: 0.015 min
 Response: 336368
 Conc: 10.85 ng/ml



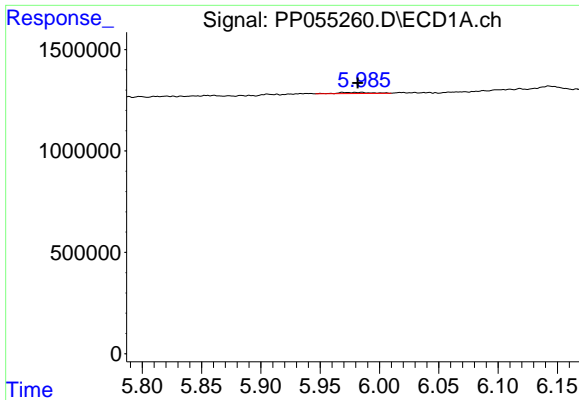
#22 AR-1248-2

R.T.: 5.771 min
 Delta R.T.: -0.007 min
 Response: 76524
 Conc: 1.20 ng/ml



#22 AR-1248-2

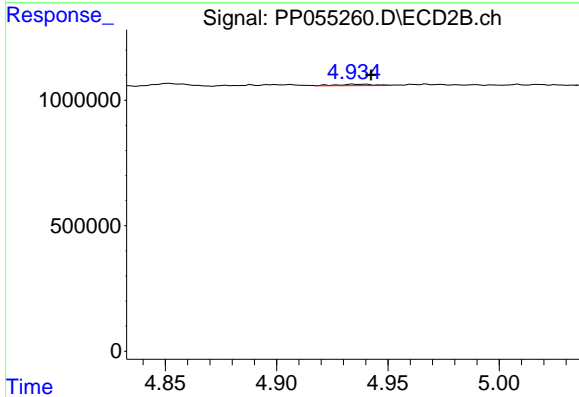
R.T.: 4.906 min
 Delta R.T.: 0.005 min
 Response: 84982
 Conc: 1.86 ng/ml



#23 AR-1248-3

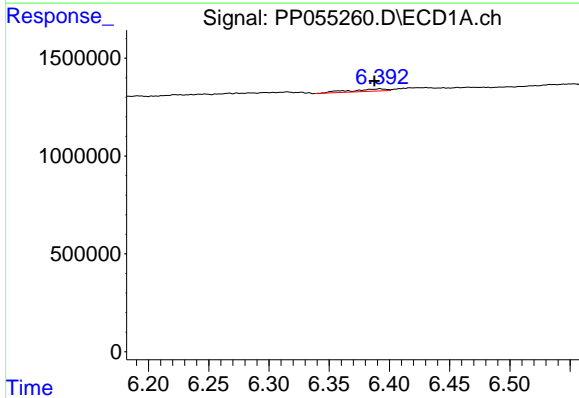
R.T.: 5.985 min
 Delta R.T.: 0.003 min
 Response: 117112
 Conc: 1.69 ng/ml

Instrument :
 ECD_P
 ClientSampleId :



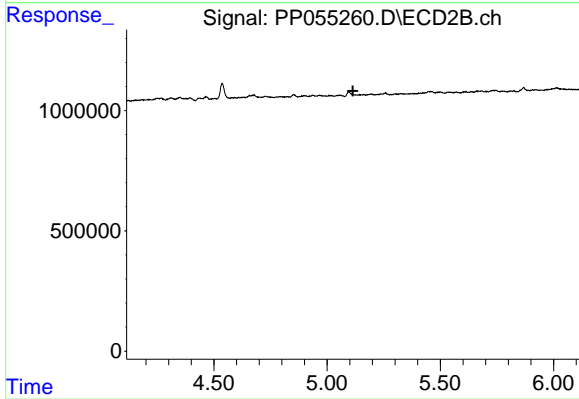
#23 AR-1248-3

R.T.: 4.935 min
 Delta R.T.: -0.008 min
 Response: 64545
 Conc: 1.35 ng/ml



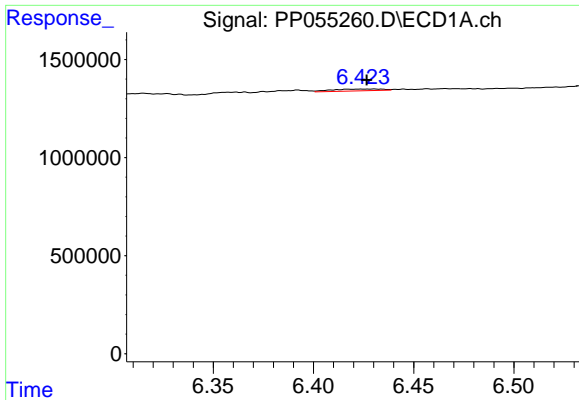
#24 AR-1248-4

R.T.: 6.392 min
 Delta R.T.: 0.005 min
 Response: 250343
 Conc: 3.30 ng/ml



#24 AR-1248-4

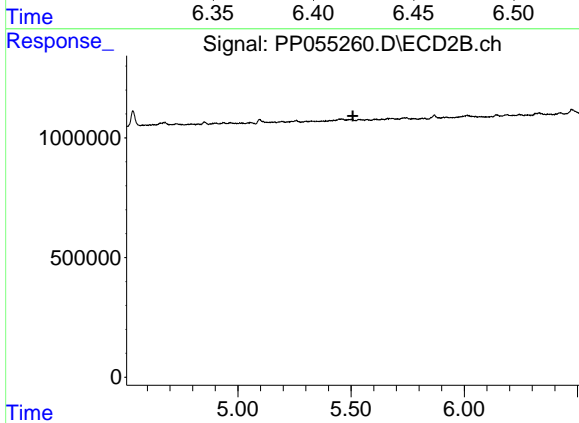
R.T.: 0.000 min
 Exp R.T. : 5.114 min
 Response: 0
 Conc: N.D.



#25 AR-1248-5

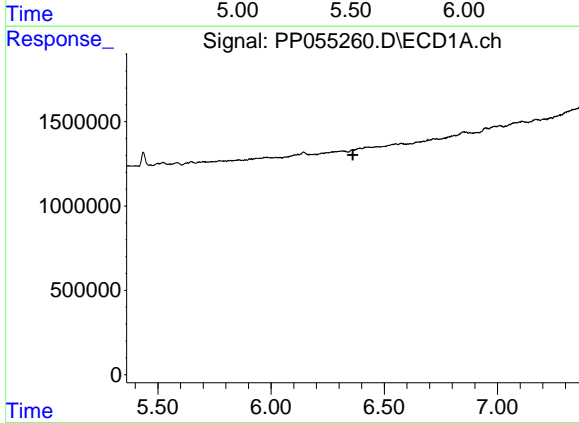
R.T.: 6.430 min
 Delta R.T.: 0.004 min
 Response: 166884
 Conc: 2.26 ng/ml

Instrument :
 ECD_P
 ClientSampleId :



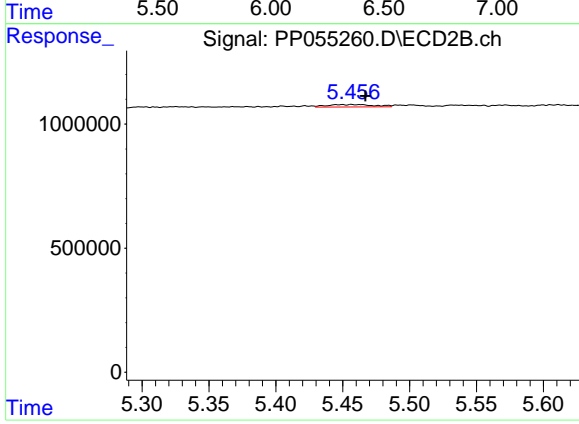
#25 AR-1248-5

R.T.: 0.000 min
 Exp R.T. : 5.508 min
 Response: 0
 Conc: N.D.



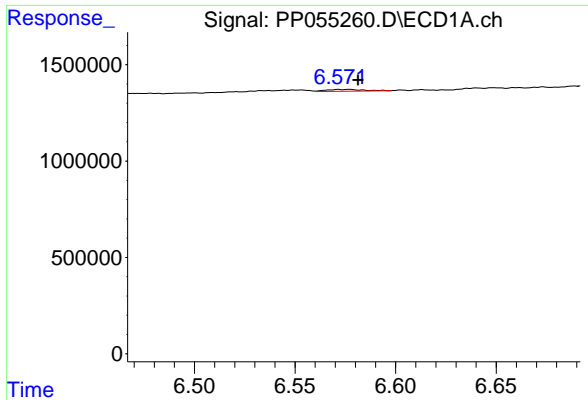
#26 AR-1254-1

R.T.: 0.000 min
 Exp R.T. : 6.361 min
 Response: 0
 Conc: N.D.



#26 AR-1254-1

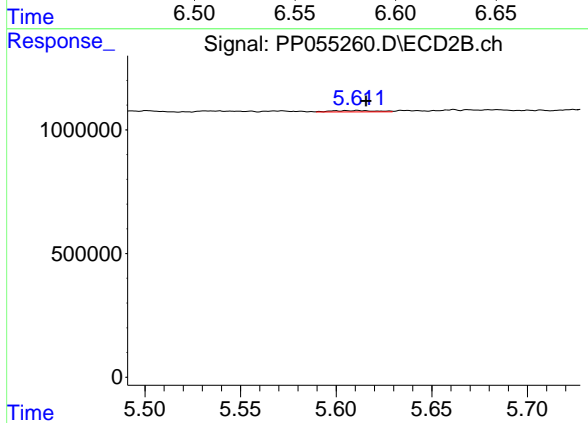
R.T.: 5.457 min
 Delta R.T.: -0.010 min
 Response: 232084
 Conc: 2.87 ng/ml



#27 AR-1254-2

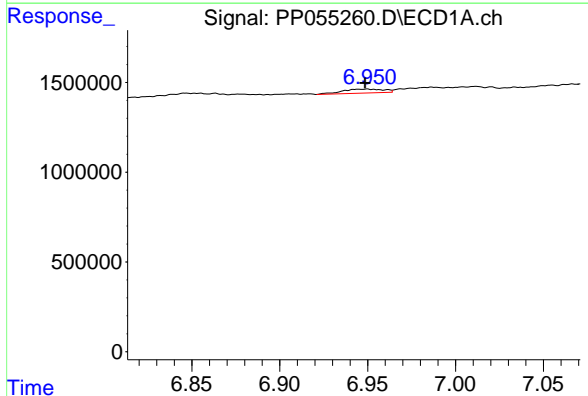
R.T.: 6.577 min
 Delta R.T.: -0.005 min
 Response: 121849
 Conc: 1.01 ng/ml

Instrument :
 ECD_P
 ClientSampleId :



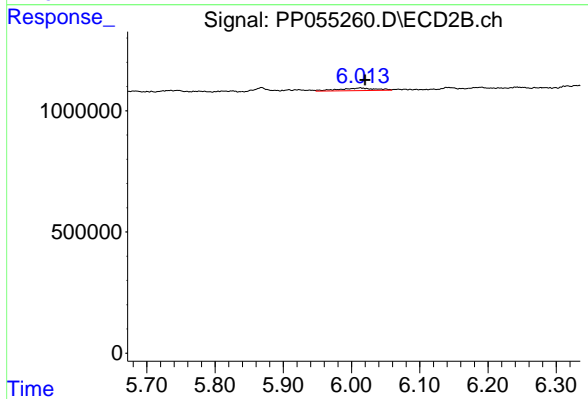
#27 AR-1254-2

R.T.: 5.611 min
 Delta R.T.: -0.004 min
 Response: 85915
 Conc: 1.20 ng/ml



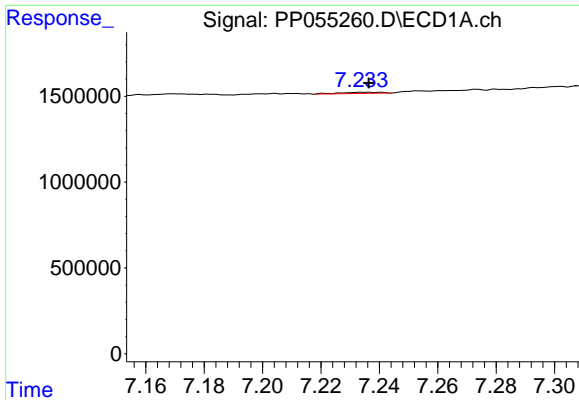
#28 AR-1254-3

R.T.: 6.950 min
 Delta R.T.: 0.001 min
 Response: 365534
 Conc: 2.98 ng/ml



#28 AR-1254-3

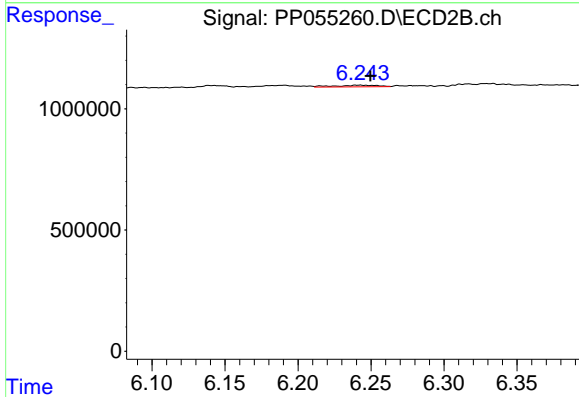
R.T.: 6.013 min
 Delta R.T.: -0.007 min
 Response: 396681
 Conc: 3.56 ng/ml



#29 AR-1254-4

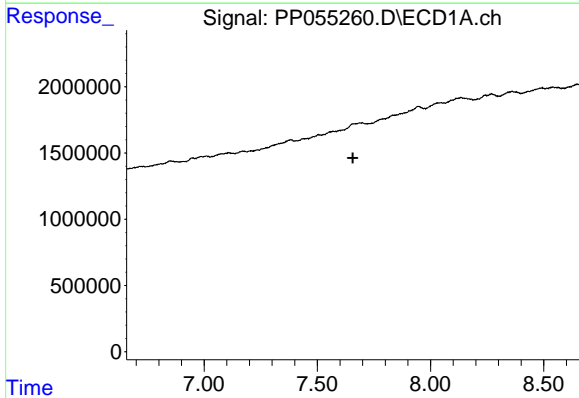
R.T.: 7.235 min
 Delta R.T.: 0.000 min
 Response: 66062
 Conc: 0.75 ng/ml

Instrument :
 ECD_P
 ClientSampleId :



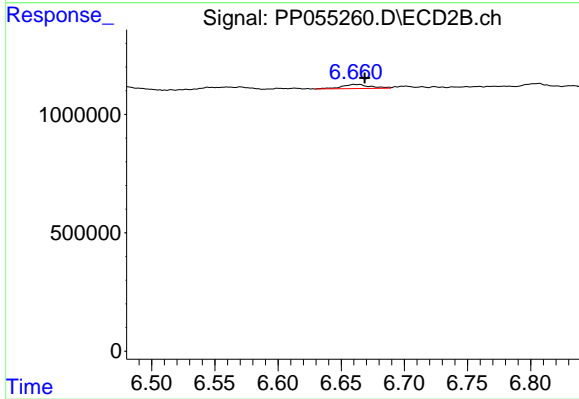
#29 AR-1254-4

R.T.: 6.242 min
 Delta R.T.: -0.008 min
 Response: 134988
 Conc: 2.19 ng/ml



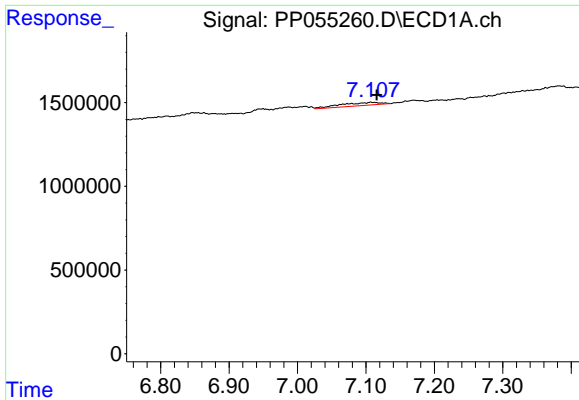
#30 AR-1254-5

R.T.: 0.000 min
 Exp R.T. : 7.657 min
 Response: 0
 Conc: N.D.



#30 AR-1254-5

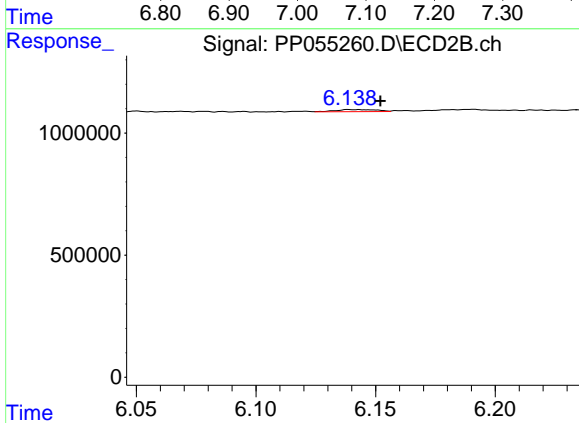
R.T.: 6.664 min
 Delta R.T.: -0.005 min
 Response: 276799
 Conc: 2.92 ng/ml



#31 AR-1260-1

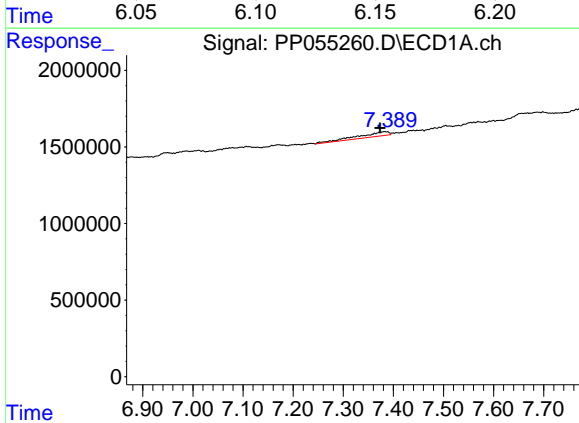
R.T.: 7.107 min
 Delta R.T.: -0.009 min
 Response: 744930
 Conc: 7.81 ng/ml

Instrument :
 ECD_P
 ClientSampleId :



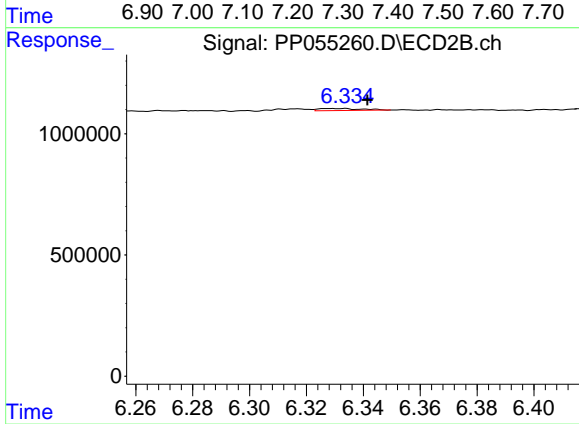
#31 AR-1260-1

R.T.: 6.140 min
 Delta R.T.: -0.012 min
 Response: 104604
 Conc: 1.35 ng/ml



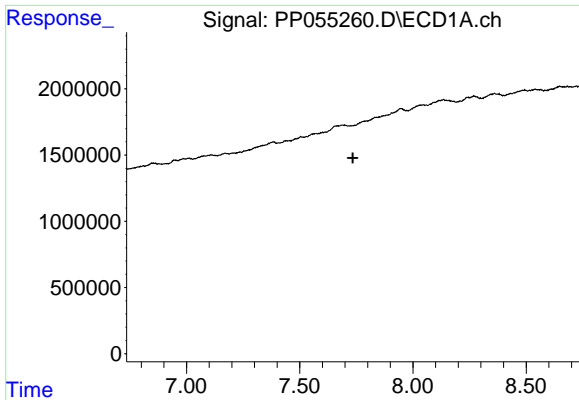
#32 AR-1260-2

R.T.: 7.382 min
 Delta R.T.: 0.009 min
 Response: 1217206
 Conc: 10.82 ng/ml



#32 AR-1260-2

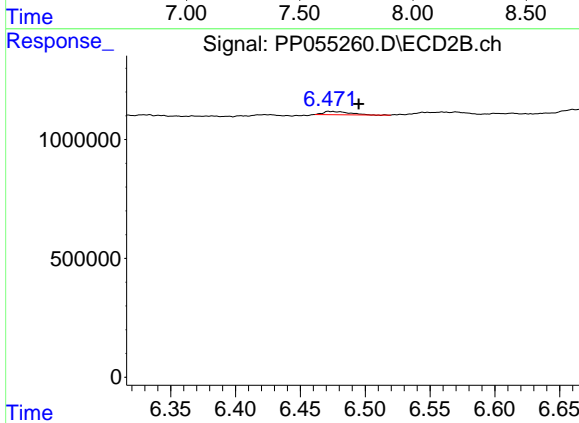
R.T.: 6.333 min
 Delta R.T.: -0.009 min
 Response: 87125
 Conc: 0.97 ng/ml



#33 AR-1260-3

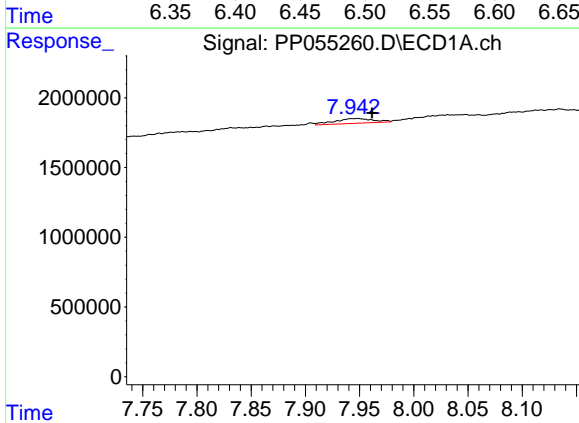
R.T.: 0.000 min
 Exp R.T.: 7.735 min
 Response: 0
 Conc: N.D.

Instrument :
 ECD_P
 ClientSampleId :



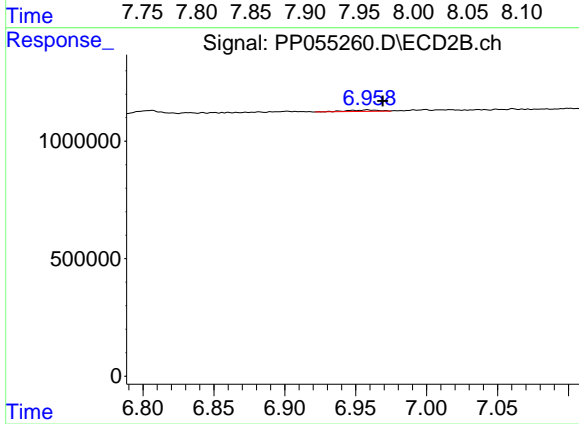
#33 AR-1260-3

R.T.: 6.472 min
 Delta R.T.: -0.023 min
 Response: 187488
 Conc: 2.21 ng/ml



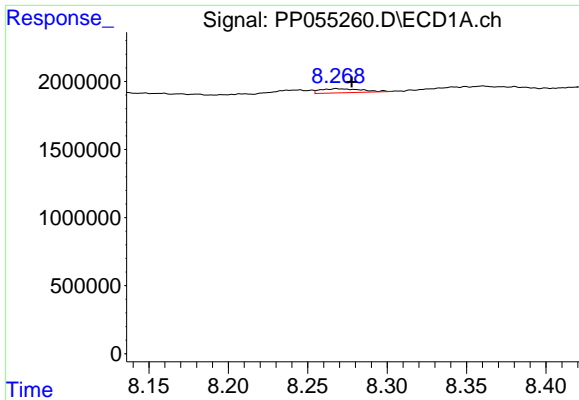
#34 AR-1260-4

R.T.: 7.948 min
 Delta R.T.: -0.013 min
 Response: 862325
 Conc: 8.88 ng/ml



#34 AR-1260-4

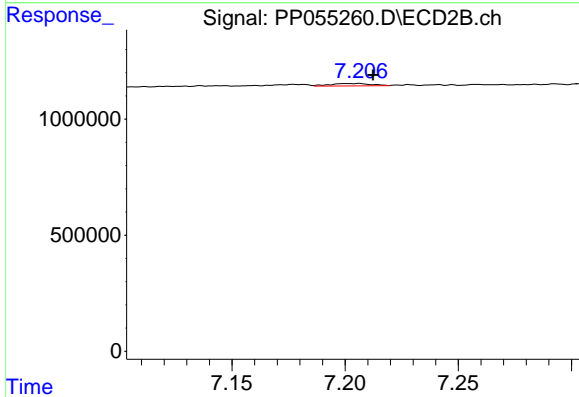
R.T.: 6.958 min
 Delta R.T.: -0.011 min
 Response: 96471
 Conc: 1.35 ng/ml



#35 AR-1260-5

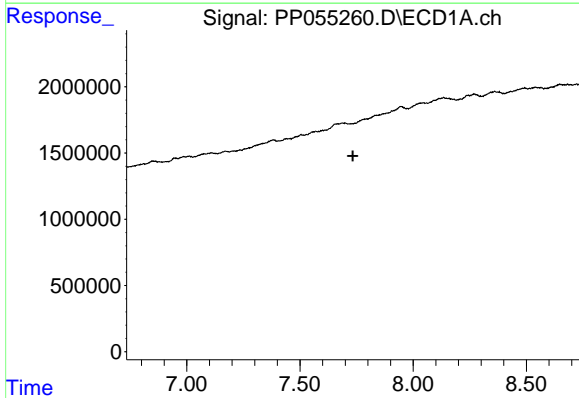
R.T.: 8.268 min
 Delta R.T.: -0.010 min
 Response: 541904
 Conc: 3.05 ng/ml

Instrument :
 ECD_P
 ClientSampleId :



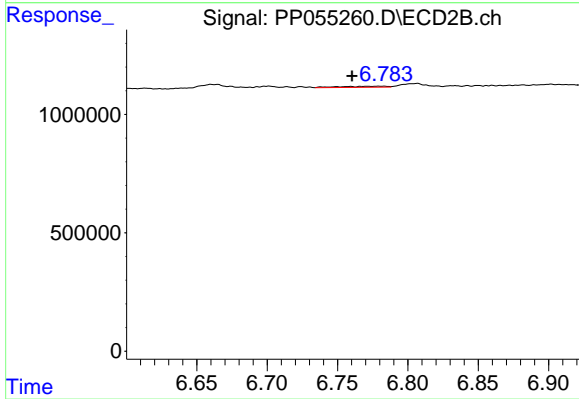
#35 AR-1260-5

R.T.: 7.206 min
 Delta R.T.: -0.006 min
 Response: 136577
 Conc: 0.89 ng/ml



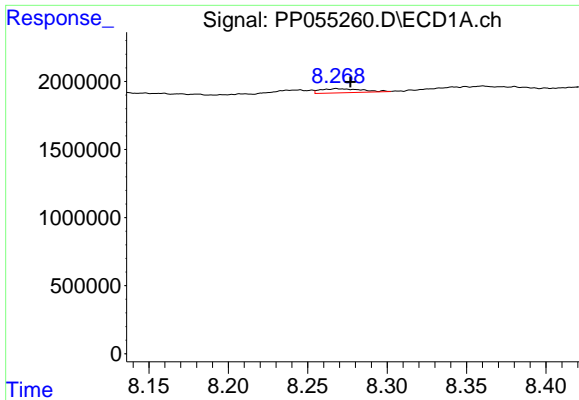
#36 AR-1262-1

R.T.: 0.000 min
 Exp R.T. : 7.734 min
 Response: 0
 Conc: N.D.



#36 AR-1262-1

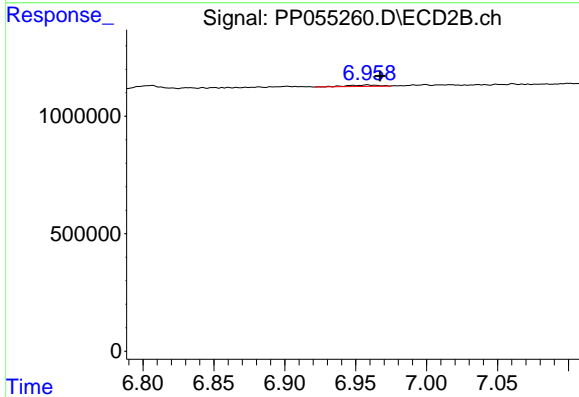
R.T.: 6.780 min
 Delta R.T.: 0.020 min
 Response: 99064
 Conc: 2.31 ng/ml



#37 AR-1262-2

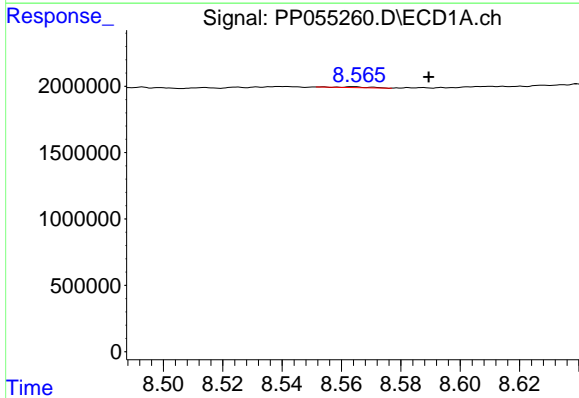
R.T.: 8.268 min
 Delta R.T.: -0.009 min
 Response: 541904
 Conc: 2.69 ng/ml

Instrument :
 ECD_P
 ClientSampleId :



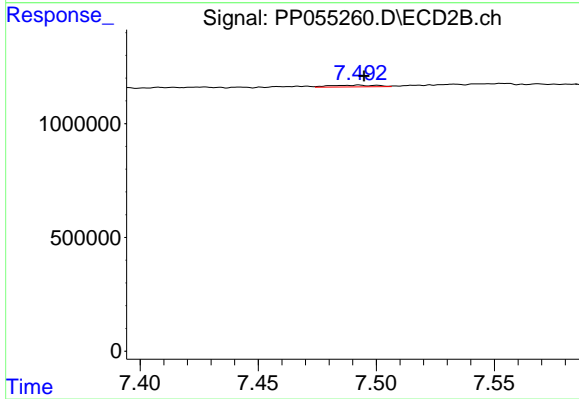
#37 AR-1262-2

R.T.: 6.958 min
 Delta R.T.: -0.009 min
 Response: 96471
 Conc: 1.04 ng/ml



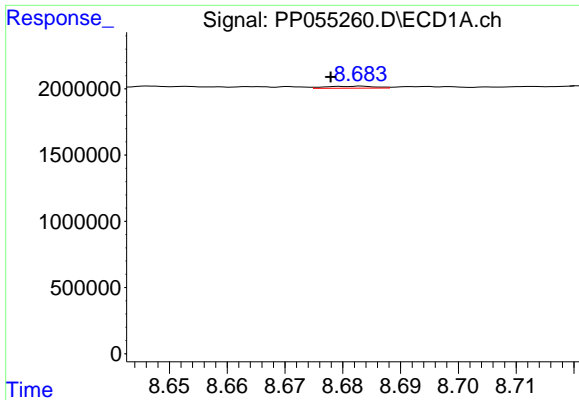
#38 AR-1262-3

R.T.: 8.564 min
 Delta R.T.: -0.025 min
 Response: 41576
 Conc: 0.30 ng/ml



#38 AR-1262-3

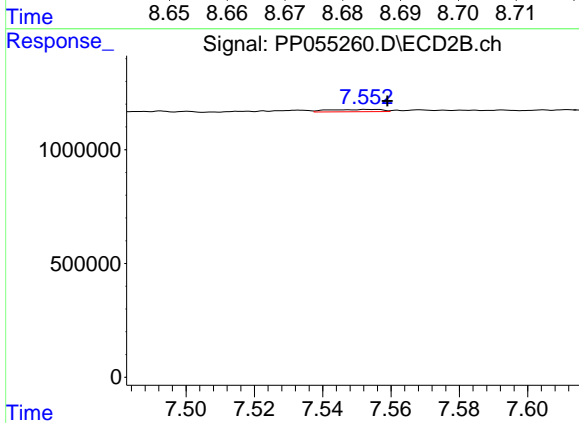
R.T.: 7.493 min
 Delta R.T.: -0.002 min
 Response: 101506
 Conc: 1.39 ng/ml



#39 AR-1262-4

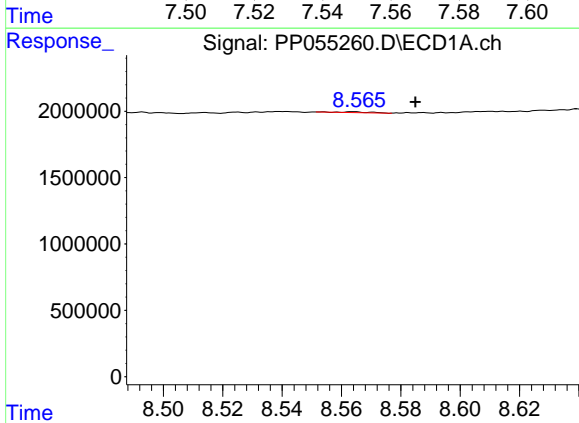
R.T.: 8.683 min
 Delta R.T.: 0.005 min
 Response: 90896
 Conc: 1.18 ng/ml

Instrument :
 ECD_P
 ClientSampleId :



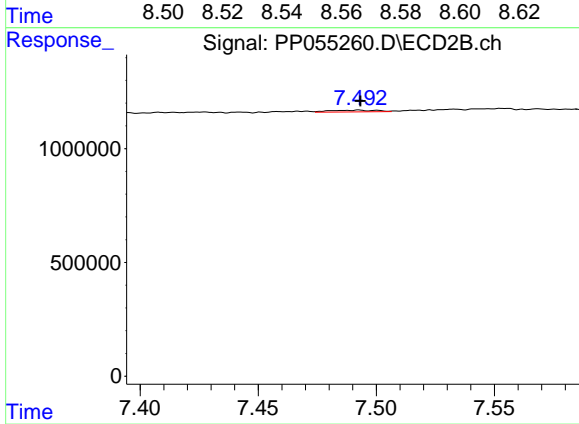
#39 AR-1262-4

R.T.: 7.554 min
 Delta R.T.: -0.005 min
 Response: 106413
 Conc: 0.81 ng/ml



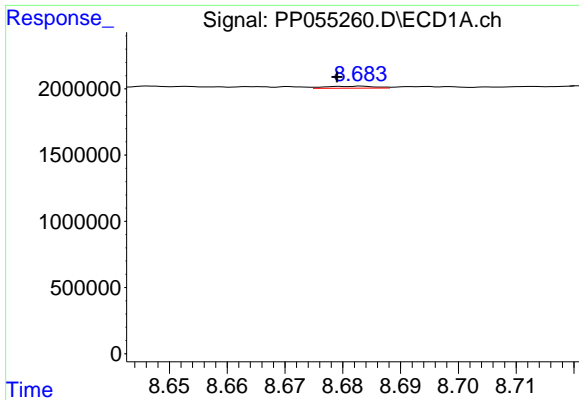
#41 AR-1268-1

R.T.: 8.564 min
 Delta R.T.: -0.021 min
 Response: 41576
 Conc: 0.17 ng/ml



#41 AR-1268-1

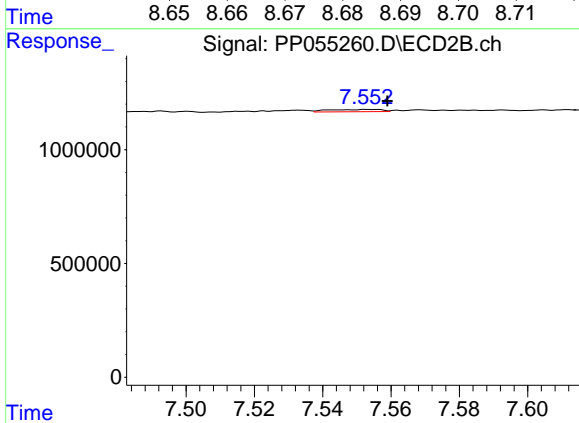
R.T.: 7.493 min
 Delta R.T.: 0.000 min
 Response: 101506
 Conc: 0.47 ng/ml



#42 AR-1268-2

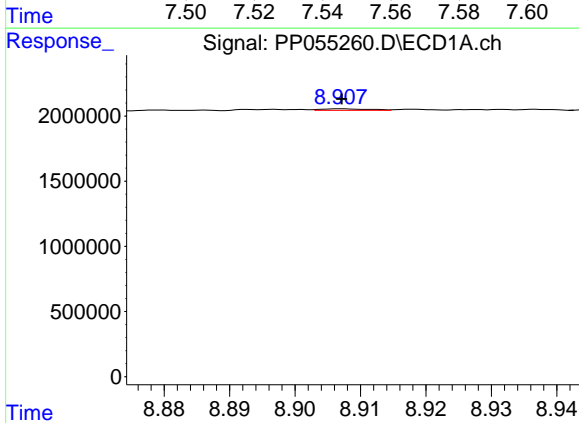
R.T.: 8.683 min
 Delta R.T.: 0.004 min
 Response: 90896
 Conc: 0.40 ng/ml

Instrument :
 ECD_P
 ClientSampleId :



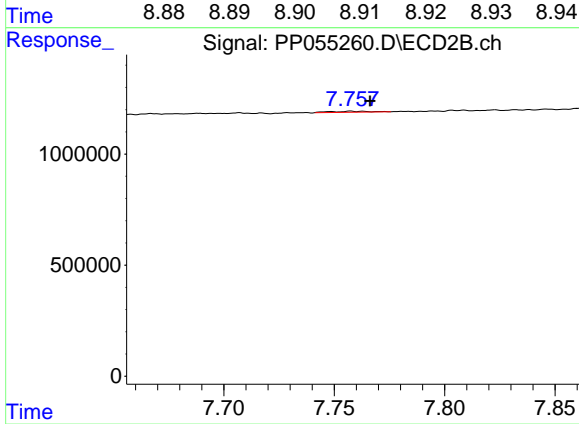
#42 AR-1268-2

R.T.: 7.554 min
 Delta R.T.: -0.005 min
 Response: 106413
 Conc: 0.55 ng/ml



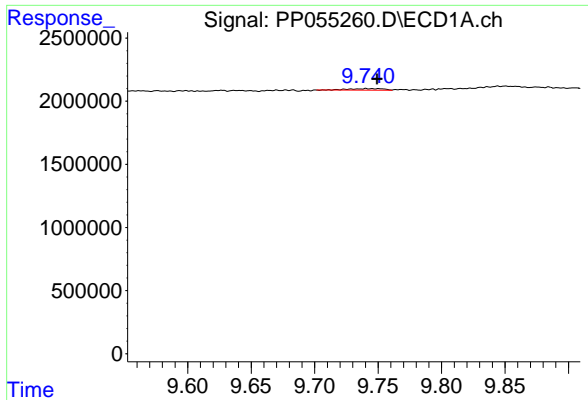
#43 AR-1268-3

R.T.: 8.907 min
 Delta R.T.: 0.000 min
 Response: 56525
 Conc: 0.28 ng/ml



#43 AR-1268-3

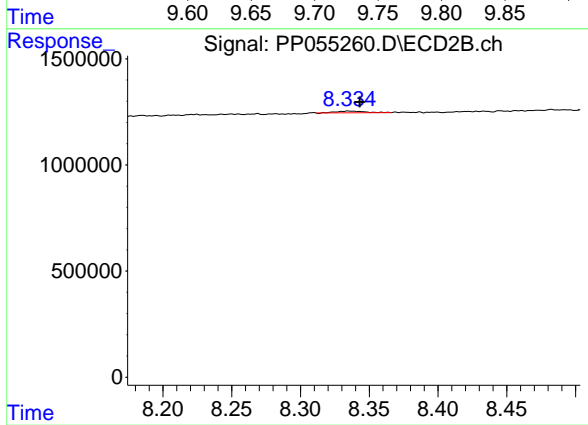
R.T.: 7.758 min
 Delta R.T.: -0.009 min
 Response: 51569
 Conc: 0.30 ng/ml



#45 AR-1268-5

R.T.: 9.741 min
Delta R.T.: -0.008 min
Response: 212917
Conc: 0.33 ng/ml

Instrument :
ECD_P
ClientSampleId :



#45 AR-1268-5

R.T.: 8.336 min
Delta R.T.: -0.007 min
Response: 108288
Conc: 0.21 ng/ml