

Data Path : Z:\pestpcbsrv\HPCHEM1\ECD\_P\Data\PP020223\  
 Data File : PP055278.D  
 Signal(s) : Signal #1: ECD1A.ch Signal #2: ECD2B.ch  
 Acq On : 02 Feb 2023 20:42  
 Operator : YP\AJ  
 Sample : AR1242CCC500  
 Misc :  
 ALS Vial : 4 Sample Multiplier: 1

Instrument :  
 ECD\_P  
 ClientSampleId :

Integration File signal 1: autoint1.e  
 Integration File signal 2: autoint2.e  
 Quant Time: Feb 03 04:36:58 2023  
 Quant Method : Z:\pestpcbsrv\HPCHEM1\ECD\_P\methods\PP012423.M  
 Quant Title : GC EXTRACTABLES  
 QLast Update : Tue Jan 24 03:37:45 2023  
 Response via : Initial Calibration  
 Integrator: ChemStation

Volume Inj. : 2 µl  
 Signal #1 Phase : ZB-MR1 Signal #2 Phase: ZB-MR2  
 Signal #1 Info : 30Mx0.32mmx 0.50µ Signal #2 Info : 30M x 0.32mm x 0.25µm

Compound	RT#1	RT#2	Resp#1	Resp#2	ng/ml	ng/ml
System Monitoring Compounds						
1) SA Tetrachlo...	4.329	3.575	87298777	77968246	50.209	51.937
2) SA Decachlor...	10.085	8.588	80520672	62276682	46.499	46.112
Target Compounds						
3) L1 AR-1016-1	5.499	4.658	24906309	21028370	370.574	424.867
4) L1 AR-1016-2	5.522	4.676	35706364	30114891	372.604	435.066
5) L1 AR-1016-3	5.584	4.853	22402319	16202821	374.518	435.600
6) L1 AR-1016-4	5.683	4.895	18076618	13301337	377.240	423.309
7) L1 AR-1016-5	5.979	5.108	18922335	16744492	373.412	409.556
8) L2 AR-1221-1	4.533	3.786	2779969	2505448	118.221	126.366
9) L2 AR-1221-2	4.624	3.873	4228226	3619374	237.982	244.183
10) L2 AR-1221-3	4.700	3.948	15133475	13355536	281.241	296.037
11) L3 AR-1232-1	4.700	3.948	15133475	13355536	340.976	362.337
12) L3 AR-1232-2	5.231	4.676	18744288	30114891	828.851	942.783
13) L3 AR-1232-3	5.522	4.853	35706364	16202821	813.037	971.918
14) L3 AR-1232-4	5.683	4.936	18076618	16829911	816.682	1043.643 #
15) L3 AR-1232-5	5.775	5.108	15143604	16744492	865.001	948.080
16) L4 AR-1242-1	5.499	4.658	24906309	21028370	444.845	513.360
17) L4 AR-1242-2	5.522	4.676	35706364	30114891	447.281	527.397
18) L4 AR-1242-3	5.584	4.853	22402319	16202821	451.101	524.913
19) L4 AR-1242-4	5.683	4.936	18076618	16829911	451.050	518.049
20) L4 AR-1242-5	6.423	5.461	19145026	18779327	430.579	502.502
21) L5 AR-1248-1	5.499	4.658	24906309	21028370	597.220	678.266
22) L5 AR-1248-2	5.775	4.895	15143604	13301337	238.203	290.883
23) L5 AR-1248-3	5.979	4.936	18922335	16829911	273.610	353.026 #
24) L5 AR-1248-4	6.385	5.108	18460553	16744492	243.434	303.193
25) L5 AR-1248-5	6.423	5.502	19145026	15465483	259.442	314.525
26) L6 AR-1254-1	6.357	5.461	13357286	18779327	169.310	232.538 #
27) L6 AR-1254-2	6.581	5.609	16460863	4910672	136.014	68.621 #
28) L6 AR-1254-3	6.946	6.014	7253376	6167846	59.216	55.363
29) L6 AR-1254-4	7.233	6.243	5586474	4203805	63.402	68.346
30) L6 AR-1254-5	7.654	6.664	2350888	1572823	23.239	16.590 #
31) L7 AR-1260-1	7.114	6.159	696156	2213810	7.303	28.549 #
32) L7 AR-1260-2	7.369	6.333	2046954	790570	18.188	8.794 #
33) L7 AR-1260-3	7.714f	6.485	188356	907288	2.339	10.685 #
34) L7 AR-1260-4	7.945f	6.957	1134405	64478	11.686	0.900 #
35) L7 AR-1260-5	8.273	7.202	656812	151337	3.693	0.984 #
36) L8 AR-1262-1	7.714f	6.732f	188356	227116	1.596	5.287 #
37) L8 AR-1262-2	8.273	6.957	656812	64478	3.261	0.696 #
39) L8 AR-1262-4	0.000	7.547	0	291012	N.D.	2.225 #
41) L9 AR-1268-1	8.558f	0.000	51437	0	0.210	N.D. #
42) L9 AR-1268-2	0.000	7.547	0	291012	N.D.	1.491 #
43) L9 AR-1268-3	8.913	7.760	203484	139874	1.019	0.814

Data Path : Z:\pestpcbsrv\HPCHEM1\ECD\_P\Data\PP020223\  
 Data File : PP055278.D  
 Signal(s) : Signal #1: ECD1A.ch Signal #2: ECD2B.ch  
 Acq On : 02 Feb 2023 20:42  
 Operator : YP\AJ  
 Sample : AR1242CCC500  
 Misc :  
 ALS Vial : 4 Sample Multiplier: 1

Instrument :  
 ECD\_P  
 ClientSampleId :

Integration File signal 1: autoint1.e  
 Integration File signal 2: autoint2.e  
 Quant Time: Feb 03 04:36:58 2023  
 Quant Method : Z:\pestpcbsrv\HPCHEM1\ECD\_P\methods\PP012423.M  
 Quant Title : GC EXTRACTABLES  
 QLast Update : Tue Jan 24 03:37:45 2023  
 Response via : Initial Calibration  
 Integrator: ChemStation

Volume Inj. : 2 µl  
 Signal #1 Phase : ZB-MR1 Signal #2 Phase: ZB-MR2  
 Signal #1 Info : 30Mx0.32mmx 0.50µ Signal #2 Info : 30M x 0.32mm x 0.25µm

	Compound	RT#1	RT#2	Resp#1	Resp#2	ng/ml	ng/ml
45)	L9 AR-1268-5	9.748	8.338	254335	237072	0.400	0.450

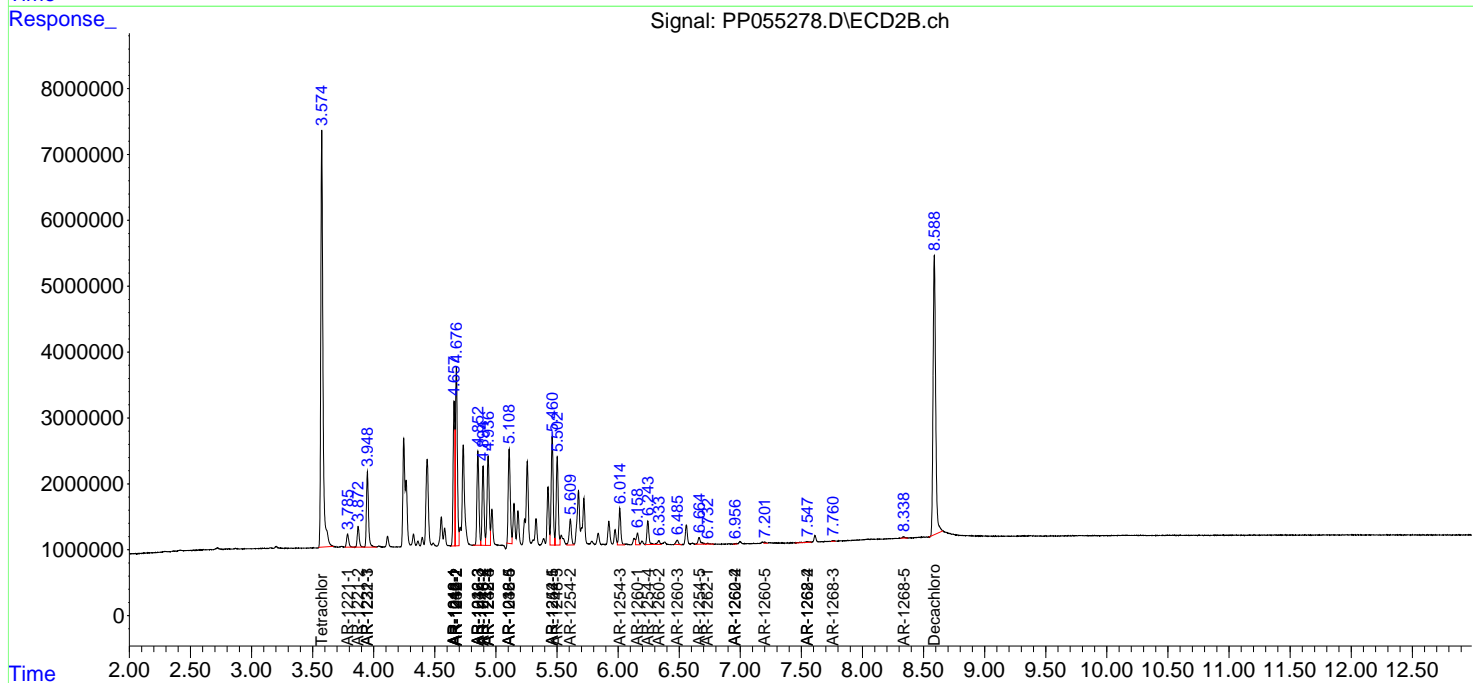
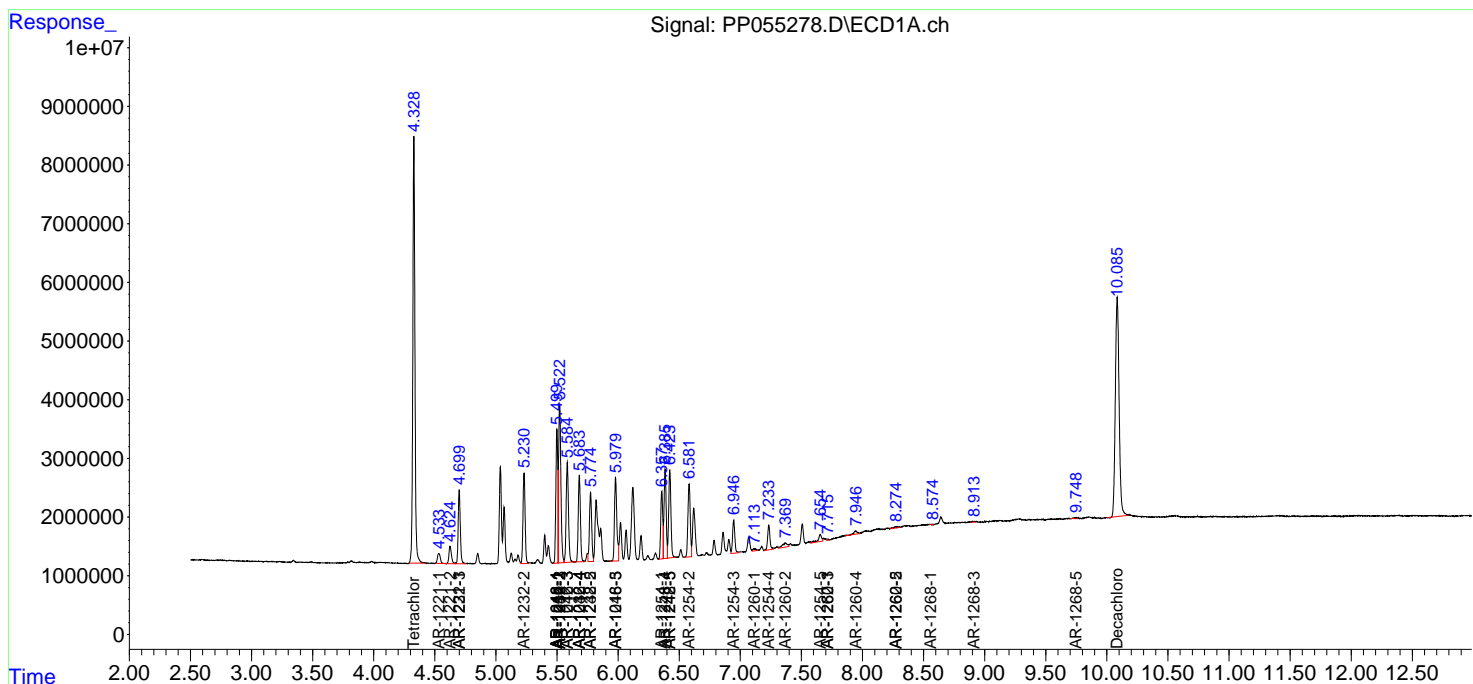
(f)=RT Delta > 1/2 Window (#)=Amounts differ by > 25% (m)=manual int.

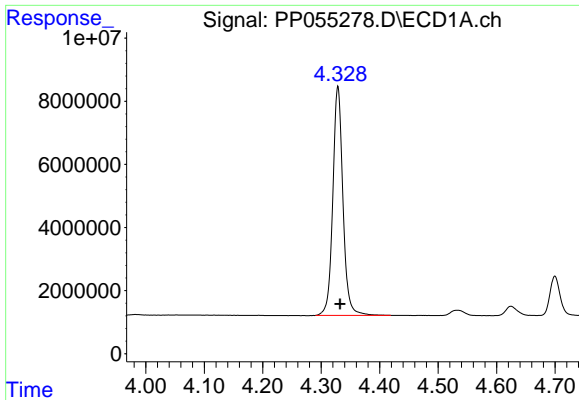
Data Path : Z:\pestpcbsrv\HPCHEM1\ECD\_P\Data\PP020223\  
 Data File : PP055278.D  
 Signal(s) : Signal #1: ECD1A.ch Signal #2: ECD2B.ch  
 Acq On : 02 Feb 2023 20:42  
 Operator : YP\AJ  
 Sample : AR1242CCC500  
 Misc :  
 ALS Vial : 4 Sample Multiplier: 1

Instrument :  
 ECD\_P  
 ClientSampleId :

Integration File signal 1: autoint1.e  
 Integration File signal 2: autoint2.e  
 Quant Time: Feb 03 04:36:58 2023  
 Quant Method : Z:\pestpcbsrv\HPCHEM1\ECD\_P\methods\PP012423.M  
 Quant Title : GC EXTRACTABLES  
 QLast Update : Tue Jan 24 03:37:45 2023  
 Response via : Initial Calibration  
 Integrator: ChemStation

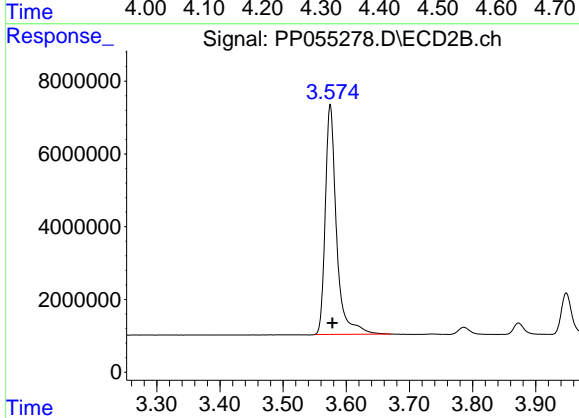
Volume Inj. : 2 µl  
 Signal #1 Phase : ZB-MR1 Signal #2 Phase: ZB-MR2  
 Signal #1 Info : 30Mx0.32mmx 0.50µ Signal #2 Info : 30M x 0.32mm x 0.25µm



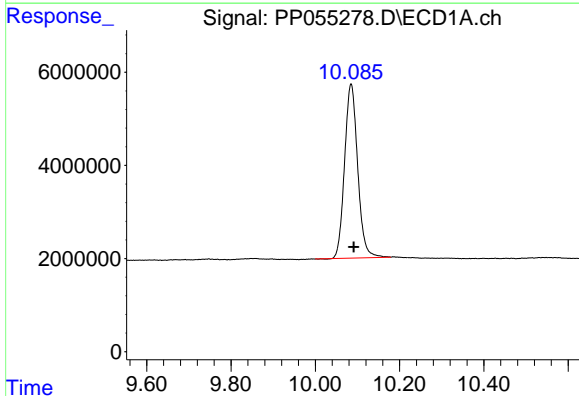


#1 Tetrachloro-m-xylene  
 R.T.: 4.329 min  
 Delta R.T.: -0.003 min  
 Response: 87298777  
 Conc: 50.21 ng/ml

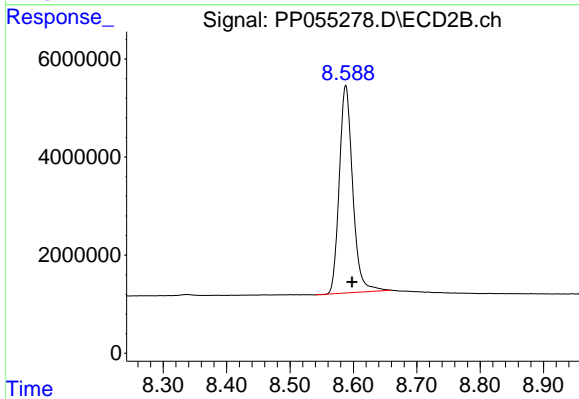
Instrument :  
 ECD\_P  
 ClientSampleId :



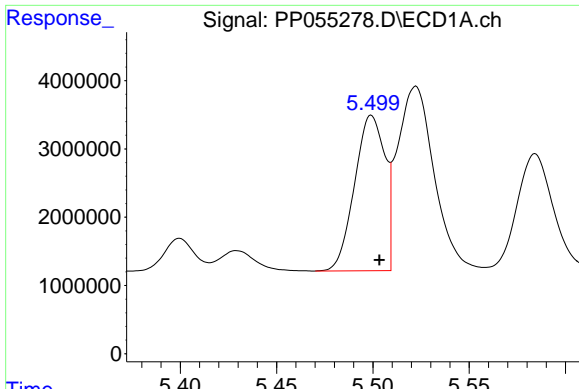
#1 Tetrachloro-m-xylene  
 R.T.: 3.575 min  
 Delta R.T.: -0.004 min  
 Response: 77968246  
 Conc: 51.94 ng/ml



#2 Decachlorobiphenyl  
 R.T.: 10.085 min  
 Delta R.T.: -0.006 min  
 Response: 80520672  
 Conc: 46.50 ng/ml



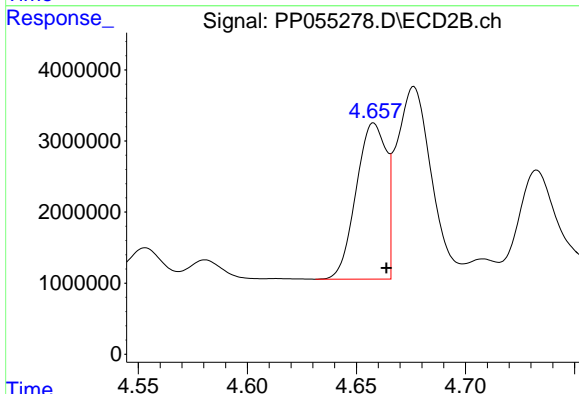
#2 Decachlorobiphenyl  
 R.T.: 8.588 min  
 Delta R.T.: -0.010 min  
 Response: 62276682  
 Conc: 46.11 ng/ml



#3 AR-1016-1

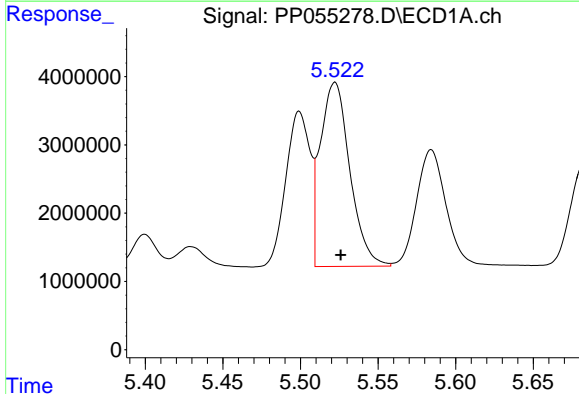
R.T.: 5.499 min  
 Delta R.T.: -0.004 min  
 Response: 24906309  
 Conc: 370.57 ng/ml

Instrument :  
 ECD\_P  
 ClientSampleId :



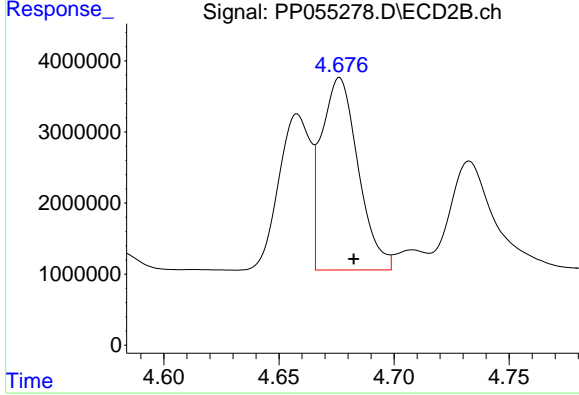
#3 AR-1016-1

R.T.: 4.658 min  
 Delta R.T.: -0.006 min  
 Response: 21028370  
 Conc: 424.87 ng/ml



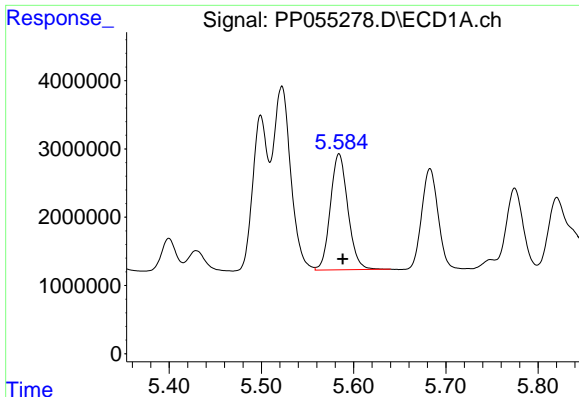
#4 AR-1016-2

R.T.: 5.522 min  
 Delta R.T.: -0.004 min  
 Response: 35706364  
 Conc: 372.60 ng/ml



#4 AR-1016-2

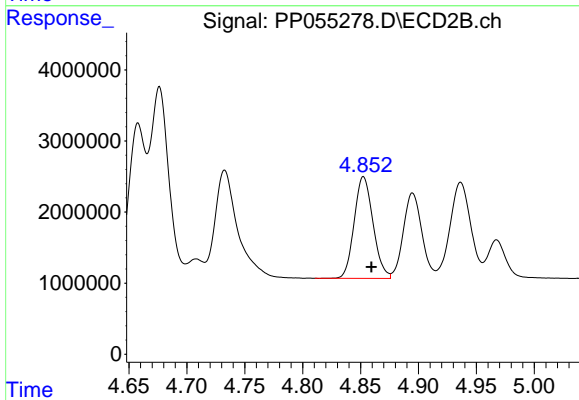
R.T.: 4.676 min  
 Delta R.T.: -0.006 min  
 Response: 30114891  
 Conc: 435.07 ng/ml



#5 AR-1016-3

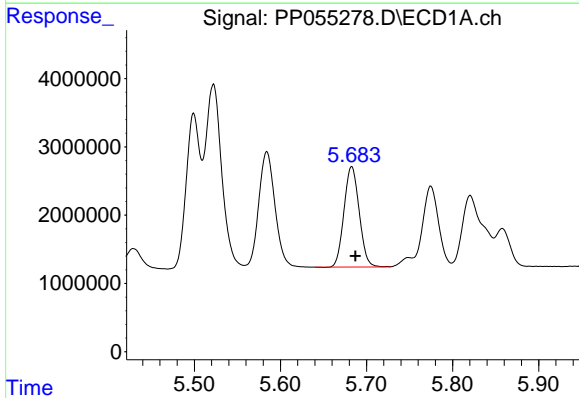
R.T.: 5.584 min  
 Delta R.T.: -0.004 min  
 Response: 22402319  
 Conc: 374.52 ng/ml

Instrument :  
 ECD\_P  
 ClientSampleId :



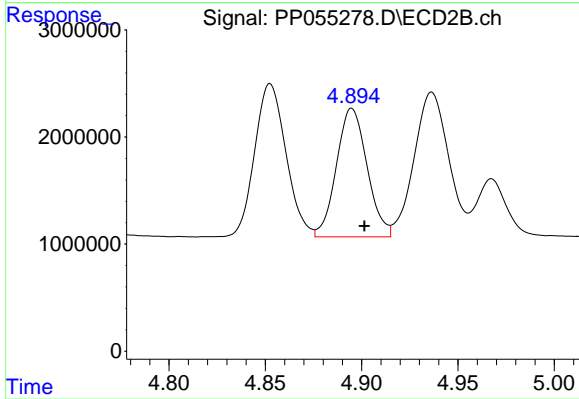
#5 AR-1016-3

R.T.: 4.853 min  
 Delta R.T.: -0.007 min  
 Response: 16202821  
 Conc: 435.60 ng/ml



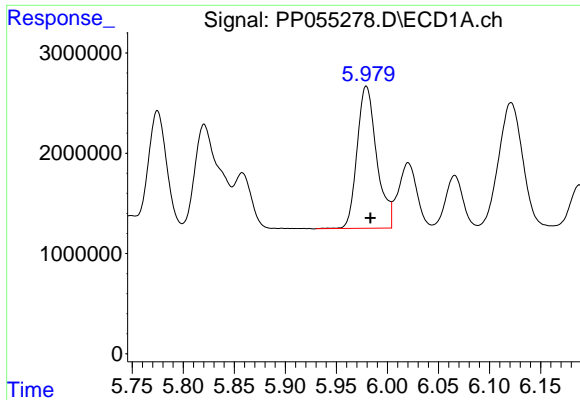
#6 AR-1016-4

R.T.: 5.683 min  
 Delta R.T.: -0.004 min  
 Response: 18076618  
 Conc: 377.24 ng/ml



#6 AR-1016-4

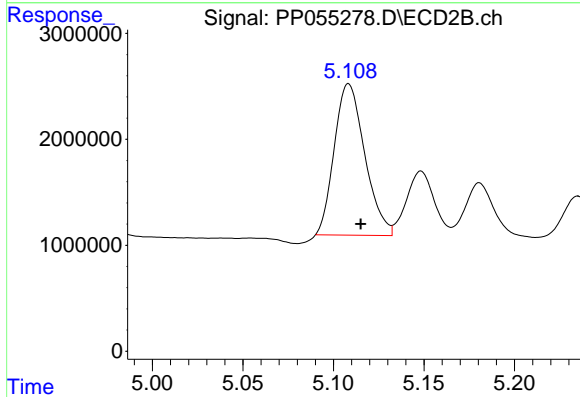
R.T.: 4.895 min  
 Delta R.T.: -0.006 min  
 Response: 13301337  
 Conc: 423.31 ng/ml



#7 AR-1016-5

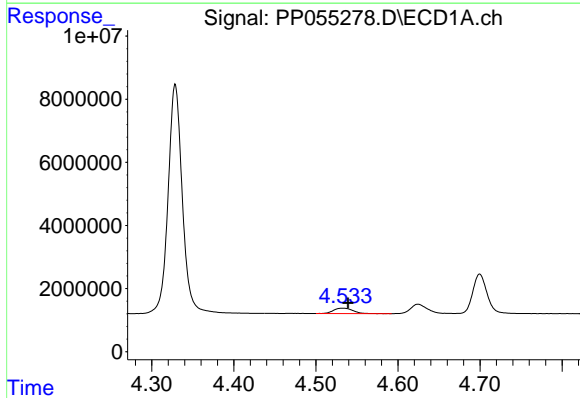
R.T.: 5.979 min  
 Delta R.T.: -0.004 min  
 Response: 18922335  
 Conc: 373.41 ng/ml

Instrument :  
 ECD\_P  
 ClientSampleId :



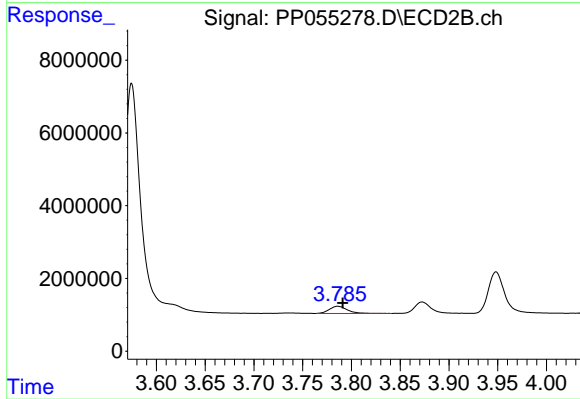
#7 AR-1016-5

R.T.: 5.108 min  
 Delta R.T.: -0.007 min  
 Response: 16744492  
 Conc: 409.56 ng/ml



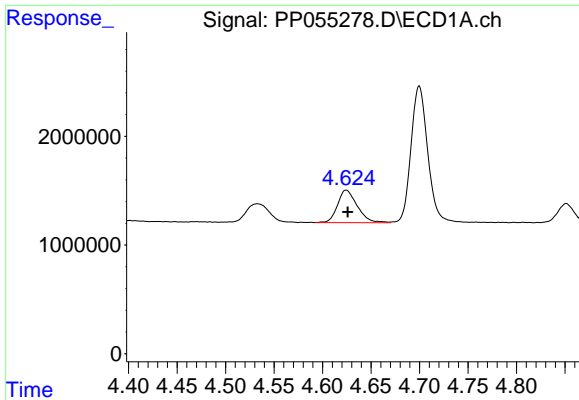
#8 AR-1221-1

R.T.: 4.533 min  
 Delta R.T.: -0.006 min  
 Response: 2779969  
 Conc: 118.22 ng/ml



#8 AR-1221-1

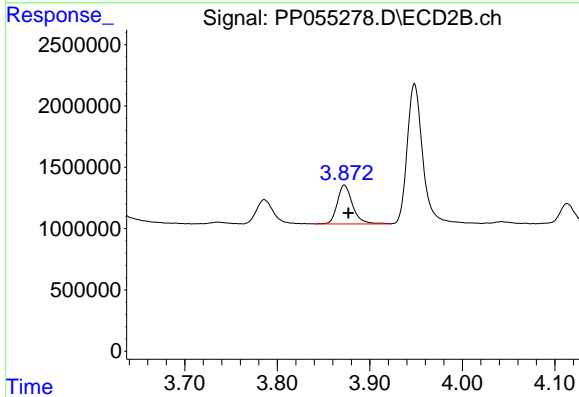
R.T.: 3.786 min  
 Delta R.T.: -0.005 min  
 Response: 2505448  
 Conc: 126.37 ng/ml



#9 AR-1221-2

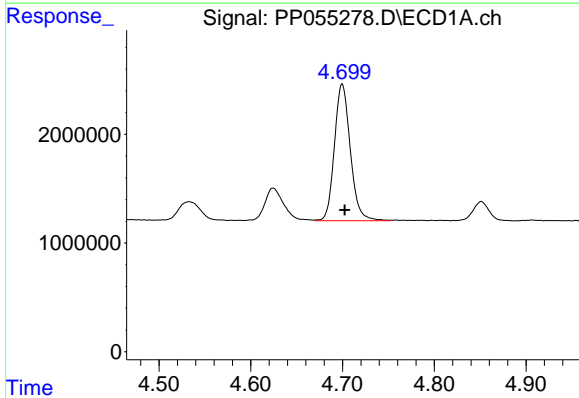
R.T.: 4.624 min  
 Delta R.T.: -0.002 min  
 Response: 4228226  
 Conc: 237.98 ng/ml

Instrument :  
 ECD\_P  
 ClientSampleId :



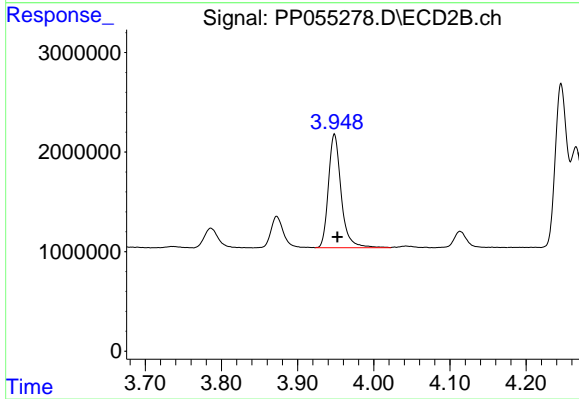
#9 AR-1221-2

R.T.: 3.873 min  
 Delta R.T.: -0.004 min  
 Response: 3619374  
 Conc: 244.18 ng/ml



#10 AR-1221-3

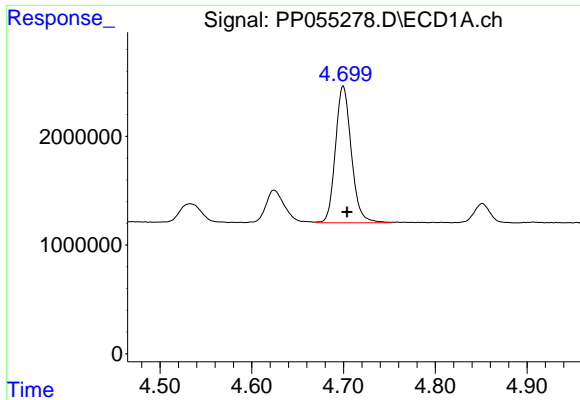
R.T.: 4.700 min  
 Delta R.T.: -0.003 min  
 Response: 15133475  
 Conc: 281.24 ng/ml



#10 AR-1221-3

R.T.: 3.948 min  
 Delta R.T.: -0.004 min  
 Response: 13355536  
 Conc: 296.04 ng/ml

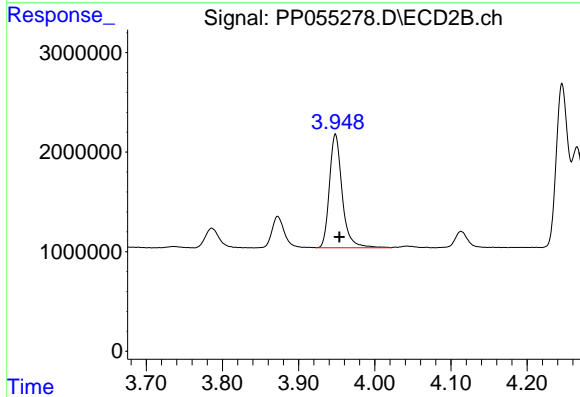




#11 AR-1232-1

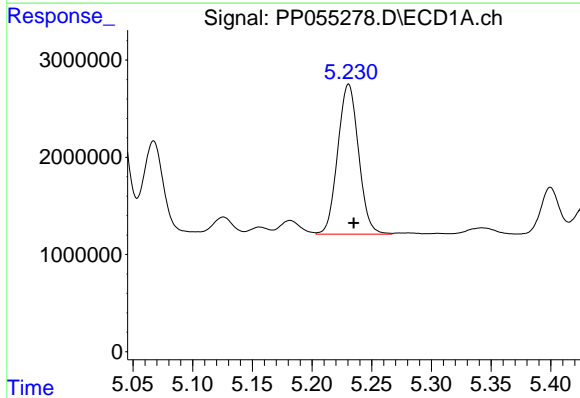
R.T.: 4.700 min  
 Delta R.T.: -0.004 min  
 Response: 15133475  
 Conc: 340.98 ng/ml

Instrument :  
 ECD\_P  
 ClientSampleId :



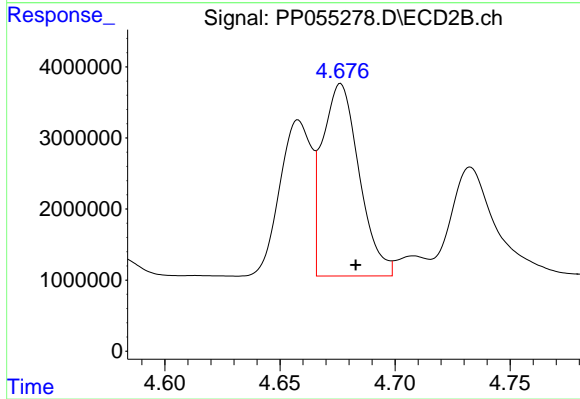
#11 AR-1232-1

R.T.: 3.948 min  
 Delta R.T.: -0.005 min  
 Response: 13355536  
 Conc: 362.34 ng/ml



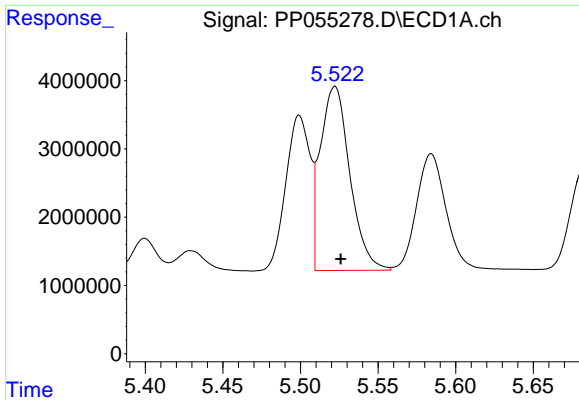
#12 AR-1232-2

R.T.: 5.231 min  
 Delta R.T.: -0.004 min  
 Response: 18744288  
 Conc: 828.85 ng/ml



#12 AR-1232-2

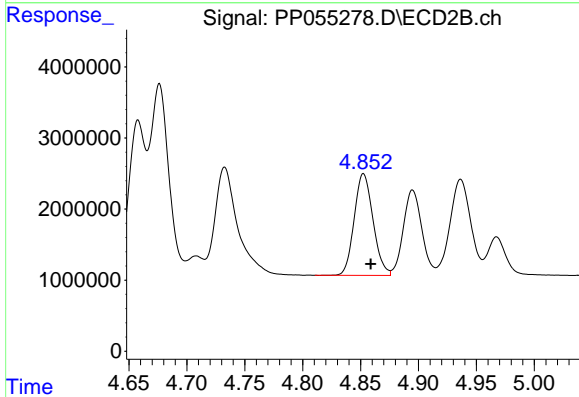
R.T.: 4.676 min  
 Delta R.T.: -0.007 min  
 Response: 30114891  
 Conc: 942.78 ng/ml



#13 AR-1232-3

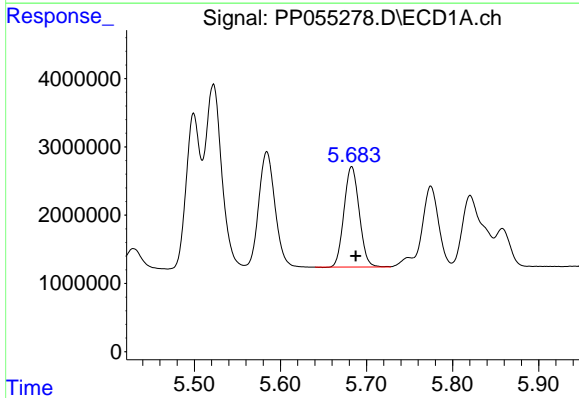
R.T.: 5.522 min  
 Delta R.T.: -0.004 min  
 Response: 35706364  
 Conc: 813.04 ng/ml

Instrument :  
 ECD\_P  
 ClientSampleId :



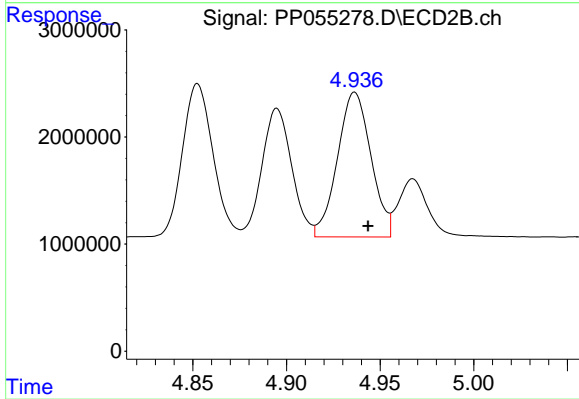
#13 AR-1232-3

R.T.: 4.853 min  
 Delta R.T.: -0.006 min  
 Response: 16202821  
 Conc: 971.92 ng/ml



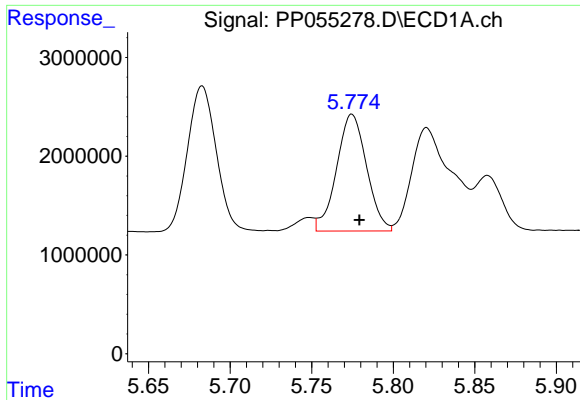
#14 AR-1232-4

R.T.: 5.683 min  
 Delta R.T.: -0.005 min  
 Response: 18076618  
 Conc: 816.68 ng/ml



#14 AR-1232-4

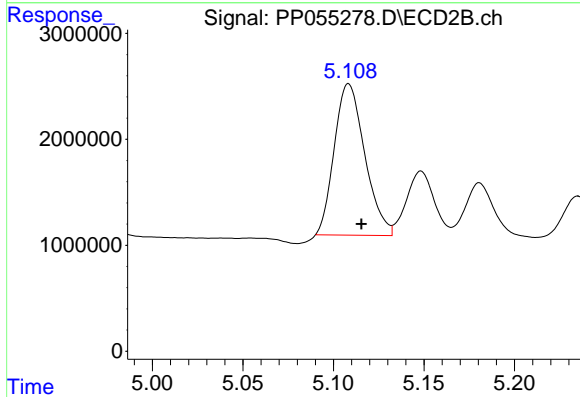
R.T.: 4.936 min  
 Delta R.T.: -0.007 min  
 Response: 16829911  
 Conc: 1043.64 ng/ml



#15 AR-1232-5

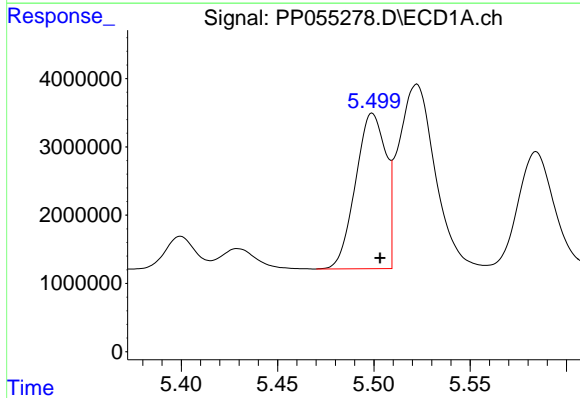
R.T.: 5.775 min  
 Delta R.T.: -0.005 min  
 Response: 15143604  
 Conc: 865.00 ng/ml

Instrument :  
 ECD\_P  
 ClientSampleId :



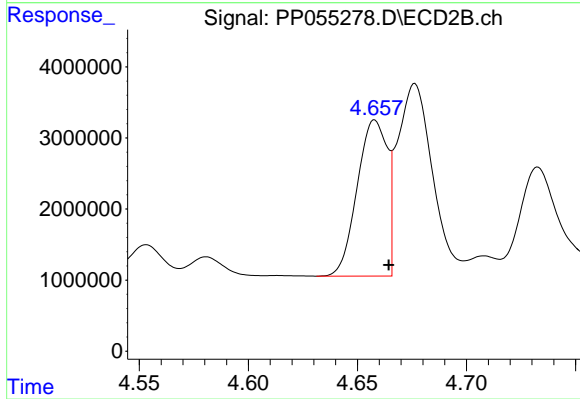
#15 AR-1232-5

R.T.: 5.108 min  
 Delta R.T.: -0.007 min  
 Response: 16744492  
 Conc: 948.08 ng/ml



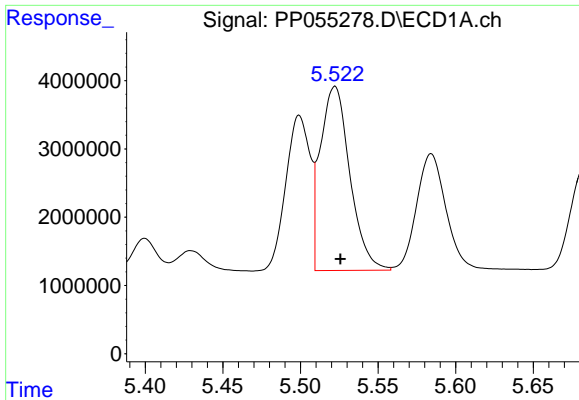
#16 AR-1242-1

R.T.: 5.499 min  
 Delta R.T.: -0.004 min  
 Response: 24906309  
 Conc: 444.84 ng/ml



#16 AR-1242-1

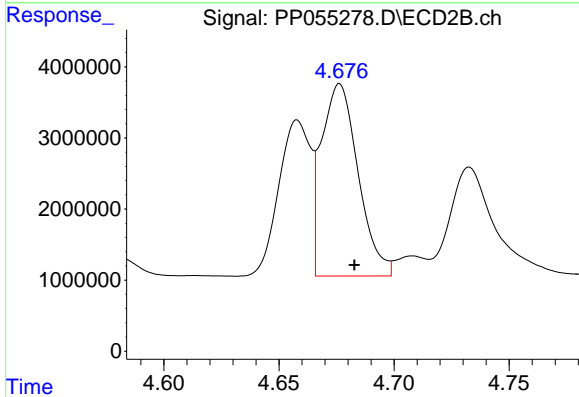
R.T.: 4.658 min  
 Delta R.T.: -0.006 min  
 Response: 21028370  
 Conc: 513.36 ng/ml



#17 AR-1242-2

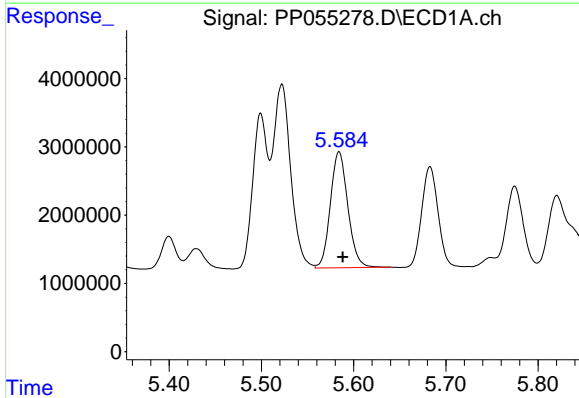
R.T.: 5.522 min  
 Delta R.T.: -0.004 min  
 Response: 35706364  
 Conc: 447.28 ng/ml

Instrument :  
 ECD\_P  
 ClientSampleId :



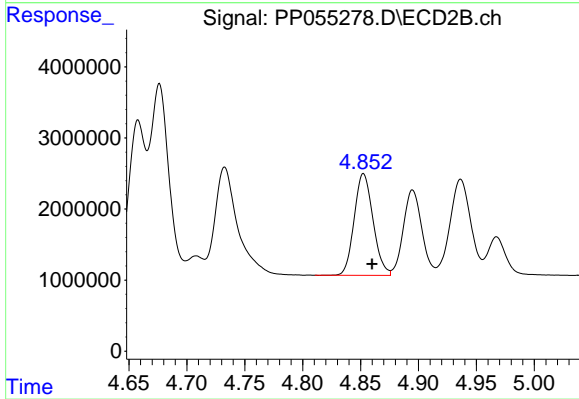
#17 AR-1242-2

R.T.: 4.676 min  
 Delta R.T.: -0.006 min  
 Response: 30114891  
 Conc: 527.40 ng/ml



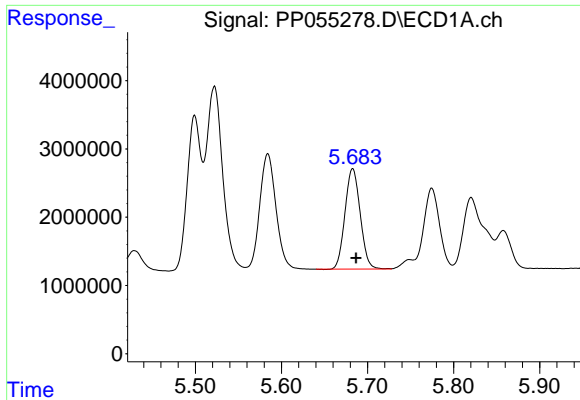
#18 AR-1242-3

R.T.: 5.584 min  
 Delta R.T.: -0.004 min  
 Response: 22402319  
 Conc: 451.10 ng/ml



#18 AR-1242-3

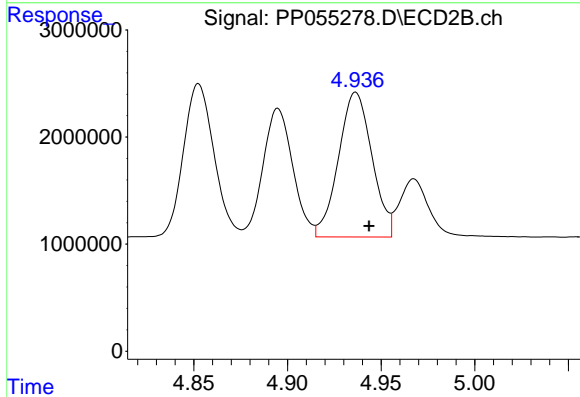
R.T.: 4.853 min  
 Delta R.T.: -0.007 min  
 Response: 16202821  
 Conc: 524.91 ng/ml



#19 AR-1242-4

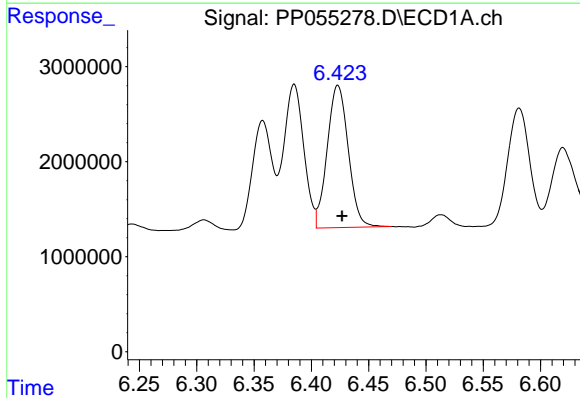
R.T.: 5.683 min  
 Delta R.T.: -0.004 min  
 Response: 18076618  
 Conc: 451.05 ng/ml

Instrument :  
 ECD\_P  
 ClientSampleId :



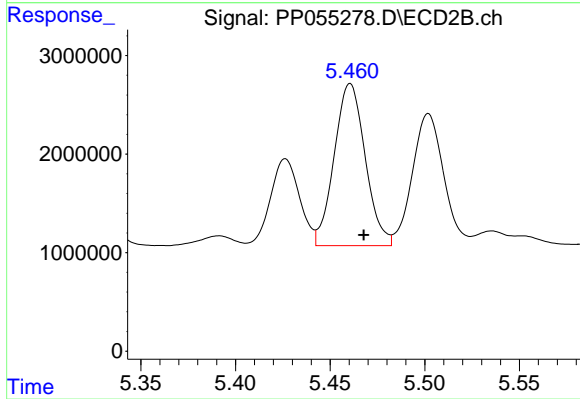
#19 AR-1242-4

R.T.: 4.936 min  
 Delta R.T.: -0.007 min  
 Response: 16829911  
 Conc: 518.05 ng/ml



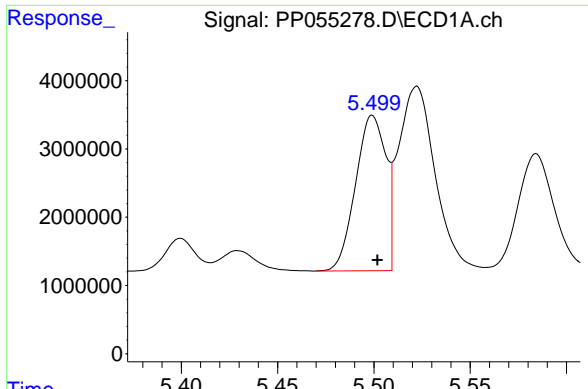
#20 AR-1242-5

R.T.: 6.423 min  
 Delta R.T.: -0.004 min  
 Response: 19145026  
 Conc: 430.58 ng/ml



#20 AR-1242-5

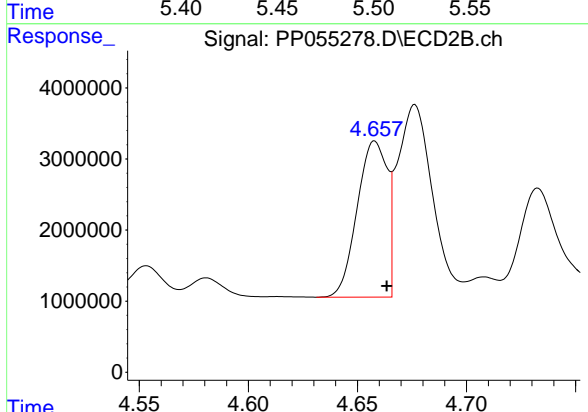
R.T.: 5.461 min  
 Delta R.T.: -0.007 min  
 Response: 18779327  
 Conc: 502.50 ng/ml



#21 AR-1248-1

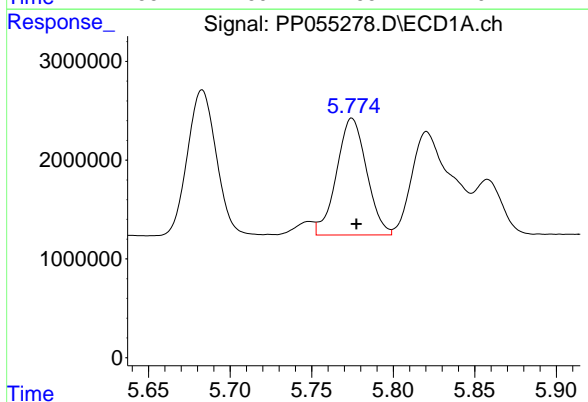
R.T.: 5.499 min  
 Delta R.T.: -0.003 min  
 Response: 24906309  
 Conc: 597.22 ng/ml

Instrument :  
 ECD\_P  
 ClientSampleId :



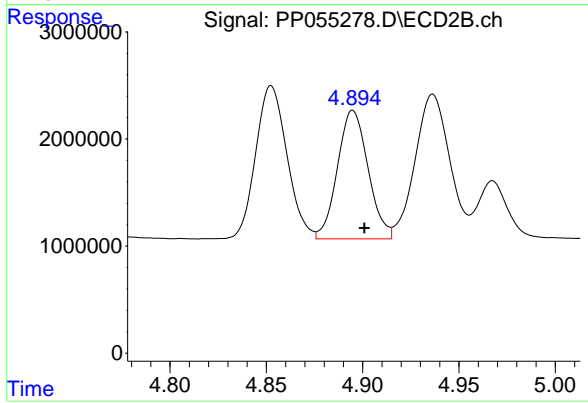
#21 AR-1248-1

R.T.: 4.658 min  
 Delta R.T.: -0.005 min  
 Response: 21028370  
 Conc: 678.27 ng/ml



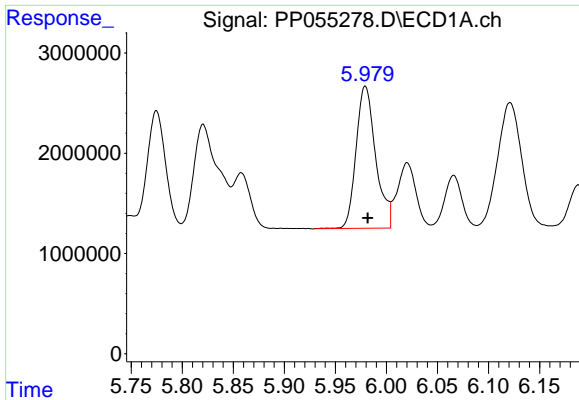
#22 AR-1248-2

R.T.: 5.775 min  
 Delta R.T.: -0.003 min  
 Response: 15143604  
 Conc: 238.20 ng/ml



#22 AR-1248-2

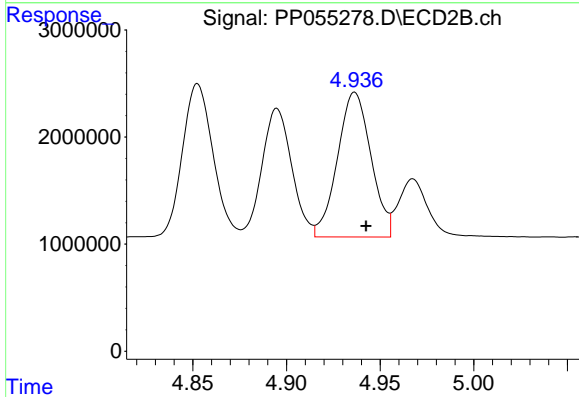
R.T.: 4.895 min  
 Delta R.T.: -0.006 min  
 Response: 13301337  
 Conc: 290.88 ng/ml



#23 AR-1248-3

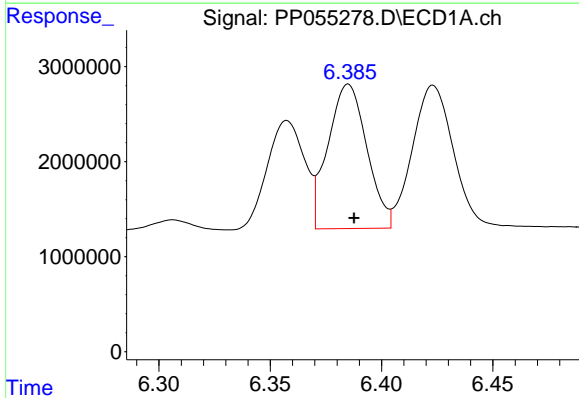
R.T.: 5.979 min  
 Delta R.T.: -0.002 min  
 Response: 18922335  
 Conc: 273.61 ng/ml

Instrument :  
 ECD\_P  
 ClientSampleId :



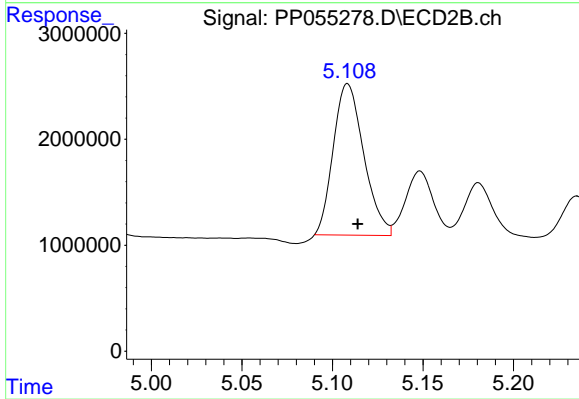
#23 AR-1248-3

R.T.: 4.936 min  
 Delta R.T.: -0.006 min  
 Response: 16829911  
 Conc: 353.03 ng/ml



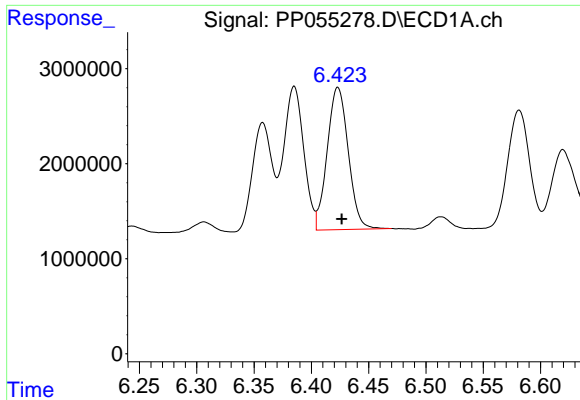
#24 AR-1248-4

R.T.: 6.385 min  
 Delta R.T.: -0.003 min  
 Response: 18460553  
 Conc: 243.43 ng/ml



#24 AR-1248-4

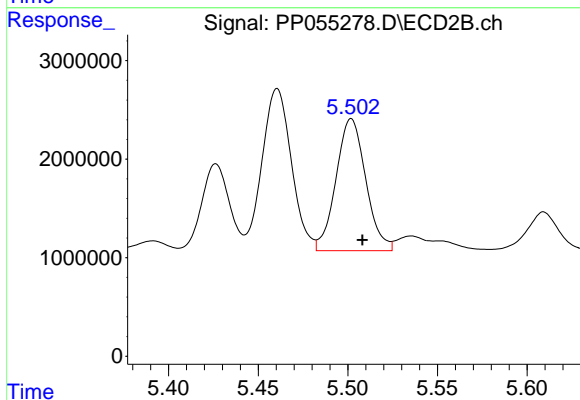
R.T.: 5.108 min  
 Delta R.T.: -0.006 min  
 Response: 16744492  
 Conc: 303.19 ng/ml



#25 AR-1248-5

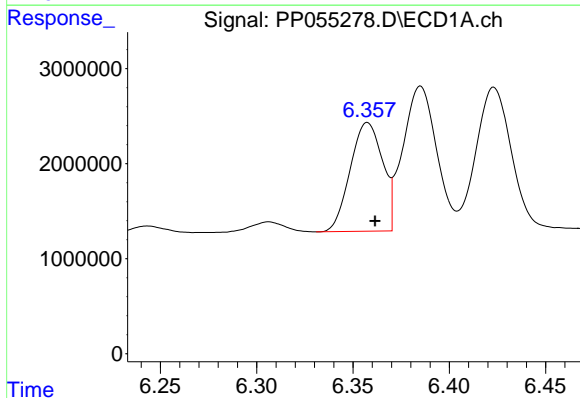
R.T.: 6.423 min  
 Delta R.T.: -0.003 min  
 Response: 19145026  
 Conc: 259.44 ng/ml

Instrument :  
 ECD\_P  
 ClientSampleId :



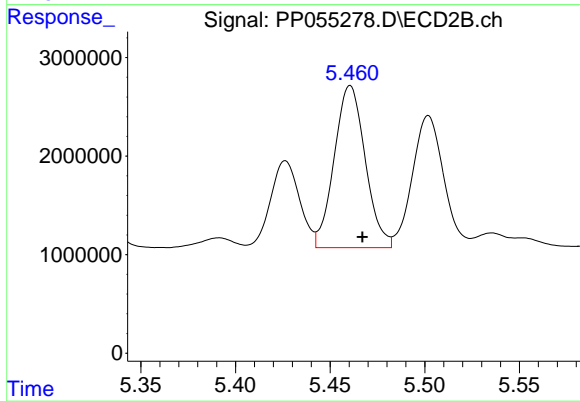
#25 AR-1248-5

R.T.: 5.502 min  
 Delta R.T.: -0.006 min  
 Response: 15465483  
 Conc: 314.53 ng/ml



#26 AR-1254-1

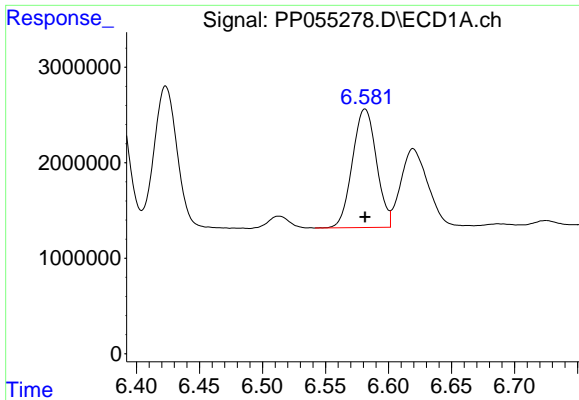
R.T.: 6.357 min  
 Delta R.T.: -0.004 min  
 Response: 13357286  
 Conc: 169.31 ng/ml



#26 AR-1254-1

R.T.: 5.461 min  
 Delta R.T.: -0.006 min  
 Response: 18779327  
 Conc: 232.54 ng/ml

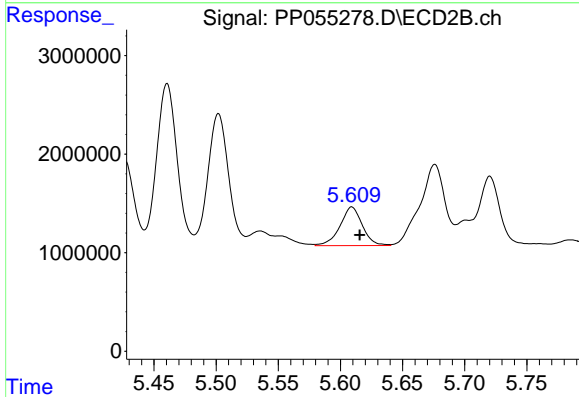




#27 AR-1254-2

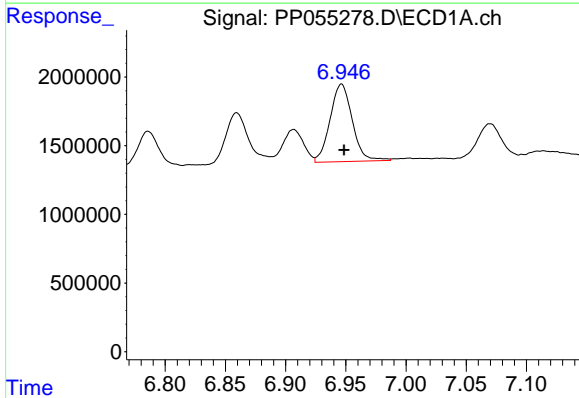
R.T.: 6.581 min  
 Delta R.T.: 0.000 min  
 Response: 16460863  
 Conc: 136.01 ng/ml

Instrument :  
 ECD\_P  
 ClientSampleId :



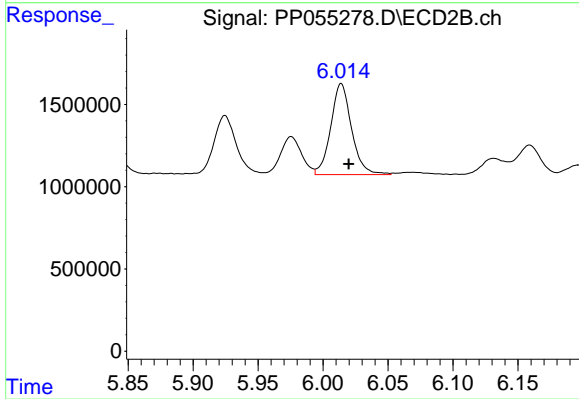
#27 AR-1254-2

R.T.: 5.609 min  
 Delta R.T.: -0.006 min  
 Response: 4910672  
 Conc: 68.62 ng/ml



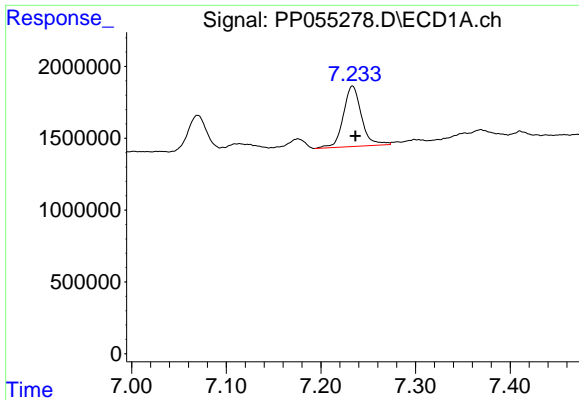
#28 AR-1254-3

R.T.: 6.946 min  
 Delta R.T.: -0.002 min  
 Response: 7253376  
 Conc: 59.22 ng/ml



#28 AR-1254-3

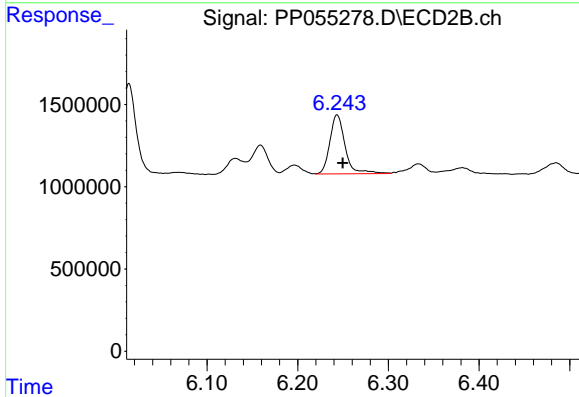
R.T.: 6.014 min  
 Delta R.T.: -0.006 min  
 Response: 6167846  
 Conc: 55.36 ng/ml



#29 AR-1254-4

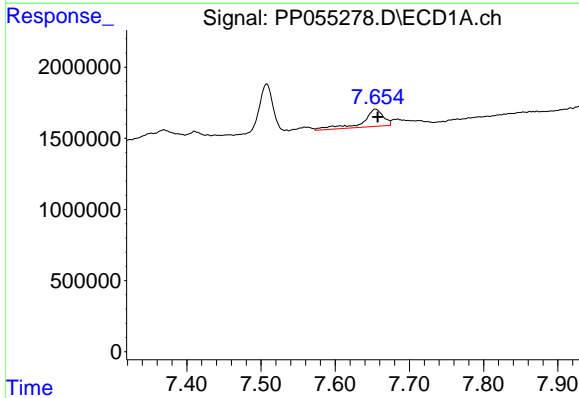
R.T.: 7.233 min  
 Delta R.T.: -0.003 min  
 Response: 5586474  
 Conc: 63.40 ng/ml

Instrument :  
 ECD\_P  
 ClientSampleId :



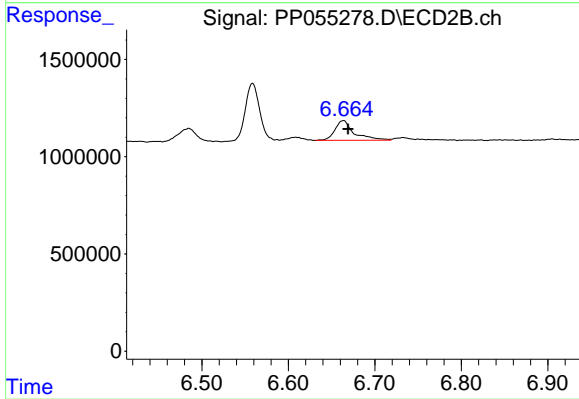
#29 AR-1254-4

R.T.: 6.243 min  
 Delta R.T.: -0.006 min  
 Response: 4203805  
 Conc: 68.35 ng/ml



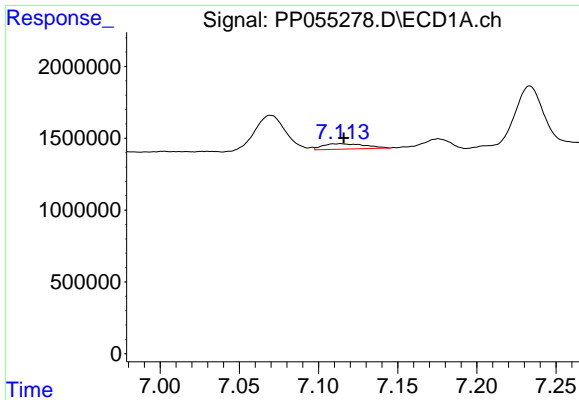
#30 AR-1254-5

R.T.: 7.654 min  
 Delta R.T.: -0.003 min  
 Response: 2350888  
 Conc: 23.24 ng/ml



#30 AR-1254-5

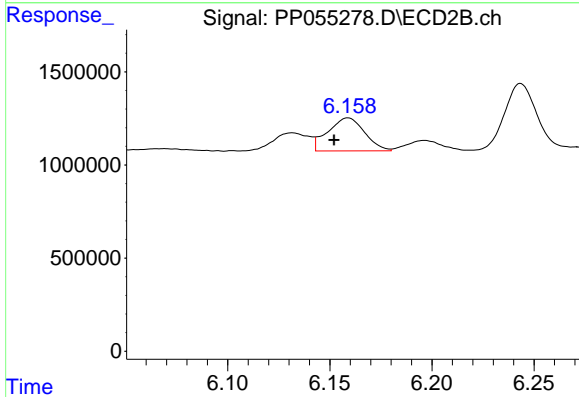
R.T.: 6.664 min  
 Delta R.T.: -0.005 min  
 Response: 1572823  
 Conc: 16.59 ng/ml



#31 AR-1260-1

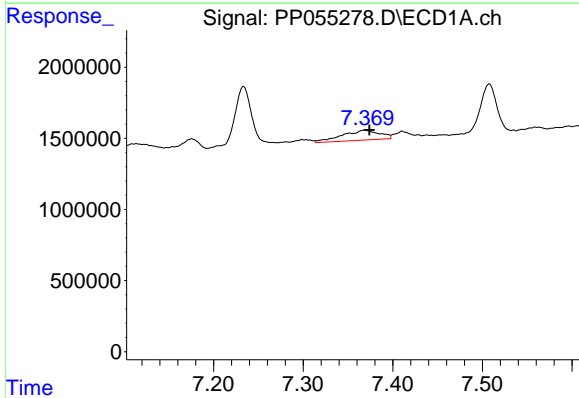
R.T.: 7.114 min  
 Delta R.T.: -0.002 min  
 Response: 696156  
 Conc: 7.30 ng/ml

Instrument :  
 ECD\_P  
 ClientSampleId :



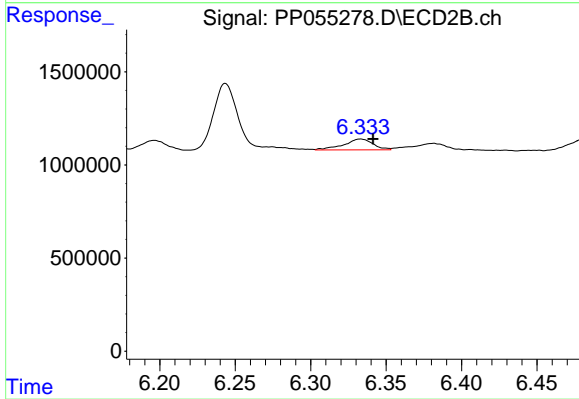
#31 AR-1260-1

R.T.: 6.159 min  
 Delta R.T.: 0.007 min  
 Response: 2213810  
 Conc: 28.55 ng/ml



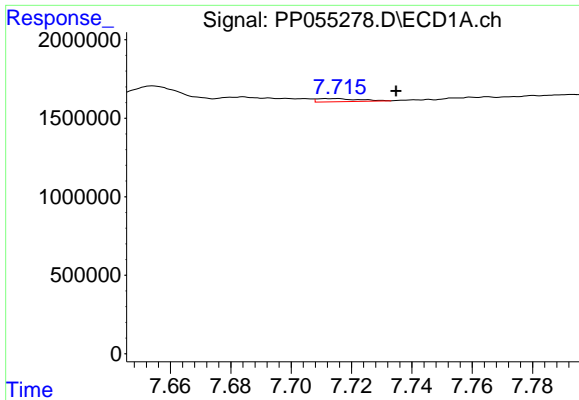
#32 AR-1260-2

R.T.: 7.369 min  
 Delta R.T.: -0.005 min  
 Response: 2046954  
 Conc: 18.19 ng/ml



#32 AR-1260-2

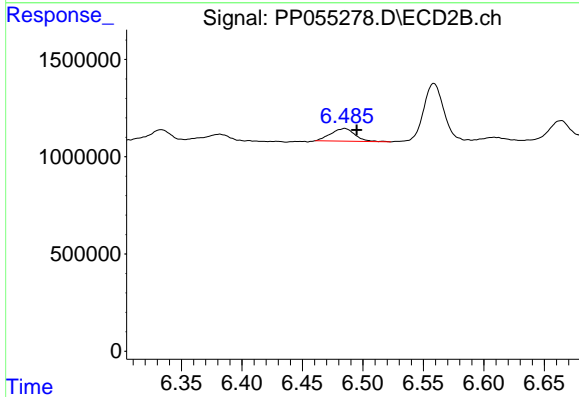
R.T.: 6.333 min  
 Delta R.T.: -0.008 min  
 Response: 790570  
 Conc: 8.79 ng/ml



#33 AR-1260-3

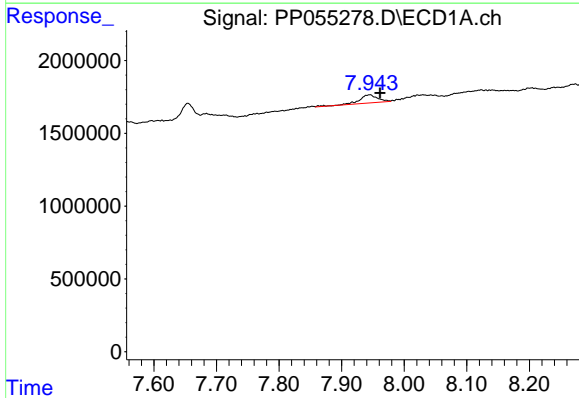
R.T.: 7.714 min  
 Delta R.T.: -0.021 min  
 Response: 188356  
 Conc: 2.34 ng/ml

Instrument :  
 ECD\_P  
 ClientSampleId :



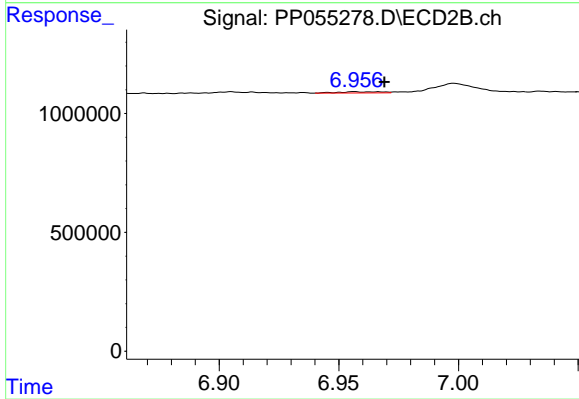
#33 AR-1260-3

R.T.: 6.485 min  
 Delta R.T.: -0.010 min  
 Response: 907288  
 Conc: 10.69 ng/ml



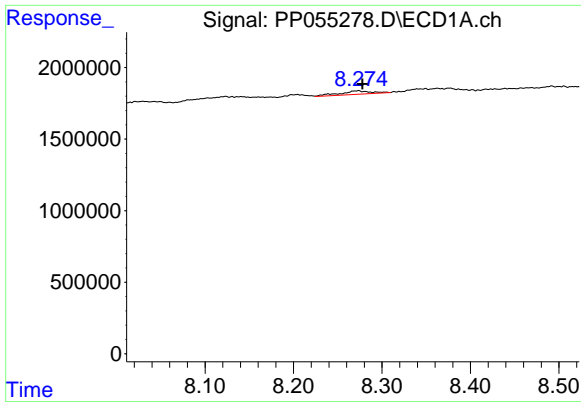
#34 AR-1260-4

R.T.: 7.945 min  
 Delta R.T.: -0.016 min  
 Response: 1134405  
 Conc: 11.69 ng/ml



#34 AR-1260-4

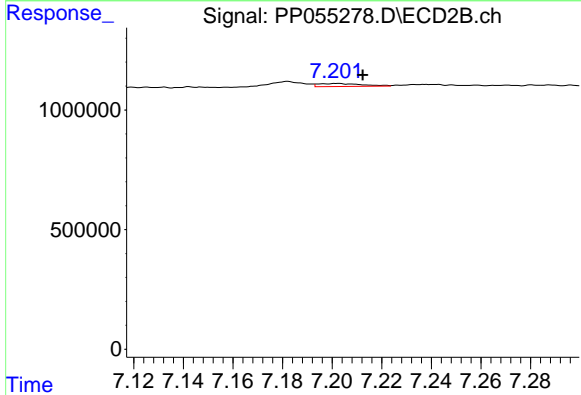
R.T.: 6.957 min  
 Delta R.T.: -0.013 min  
 Response: 64478  
 Conc: 0.90 ng/ml



#35 AR-1260-5

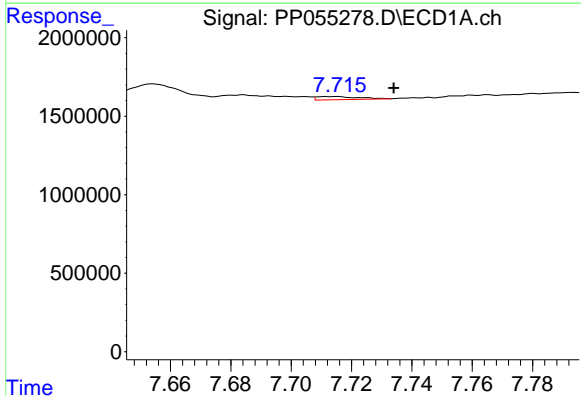
R.T.: 8.273 min  
 Delta R.T.: -0.004 min  
 Response: 656812  
 Conc: 3.69 ng/ml

Instrument :  
 ECD\_P  
 ClientSampleId :



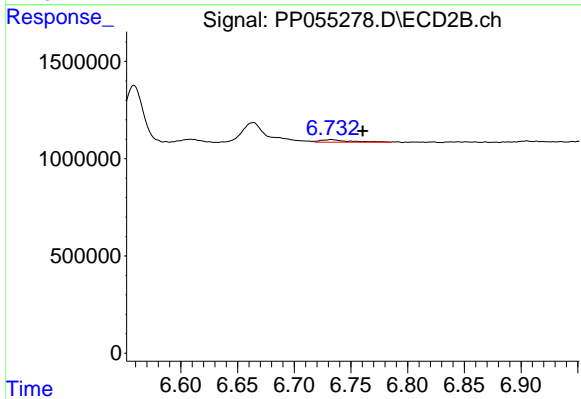
#35 AR-1260-5

R.T.: 7.202 min  
 Delta R.T.: -0.010 min  
 Response: 151337  
 Conc: 0.98 ng/ml



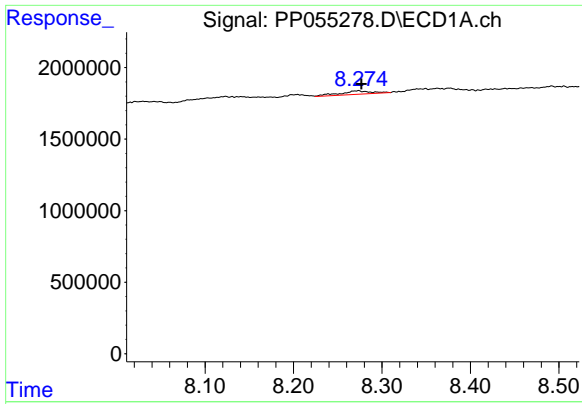
#36 AR-1262-1

R.T.: 7.714 min  
 Delta R.T.: -0.020 min  
 Response: 188356  
 Conc: 1.60 ng/ml



#36 AR-1262-1

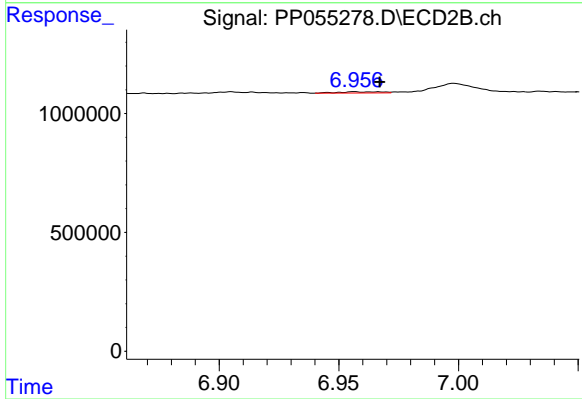
R.T.: 6.732 min  
 Delta R.T.: -0.028 min  
 Response: 227116  
 Conc: 5.29 ng/ml



#37 AR-1262-2

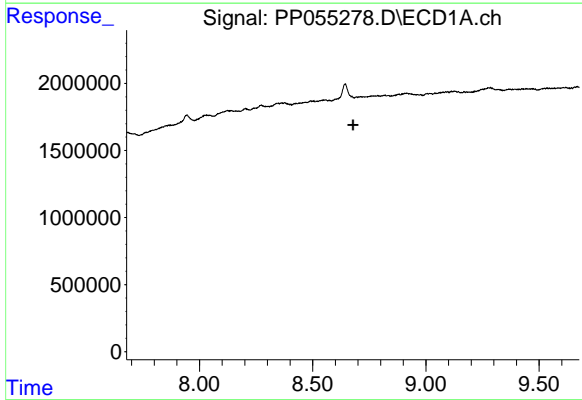
R.T.: 8.273 min  
 Delta R.T.: -0.004 min  
 Response: 656812  
 Conc: 3.26 ng/ml

Instrument :  
 ECD\_P  
 ClientSampleId :



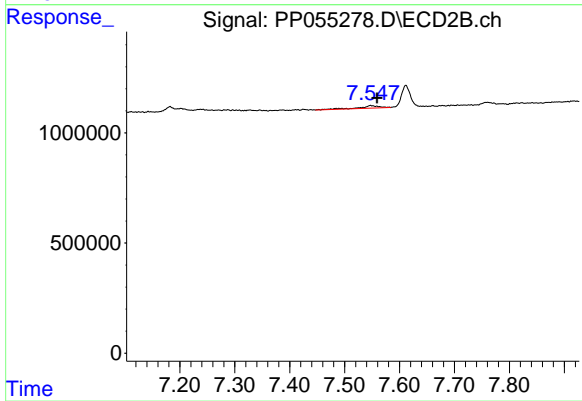
#37 AR-1262-2

R.T.: 6.957 min  
 Delta R.T.: -0.011 min  
 Response: 64478  
 Conc: 0.70 ng/ml



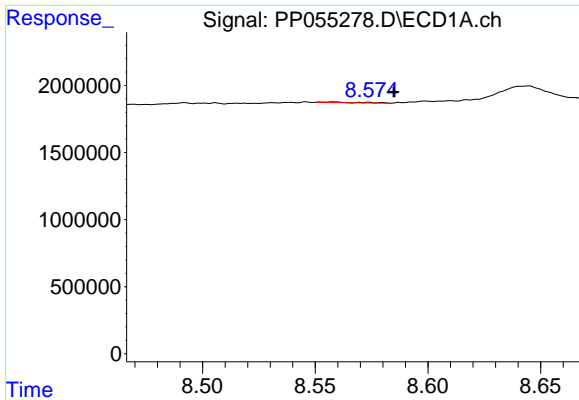
#39 AR-1262-4

R.T.: 0.000 min  
 Exp R.T. : 8.678 min  
 Response: 0  
 Conc: N.D.



#39 AR-1262-4

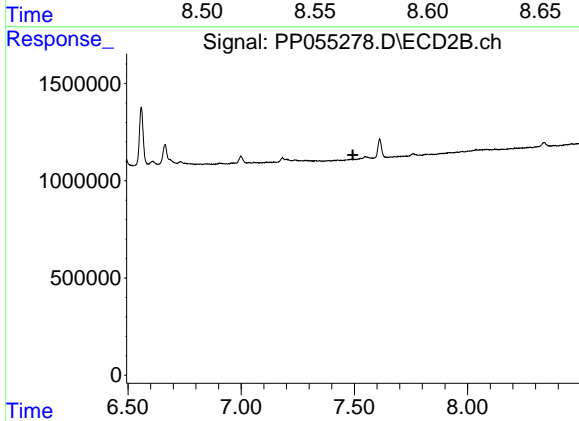
R.T.: 7.547 min  
 Delta R.T.: -0.012 min  
 Response: 291012  
 Conc: 2.23 ng/ml



#41 AR-1268-1

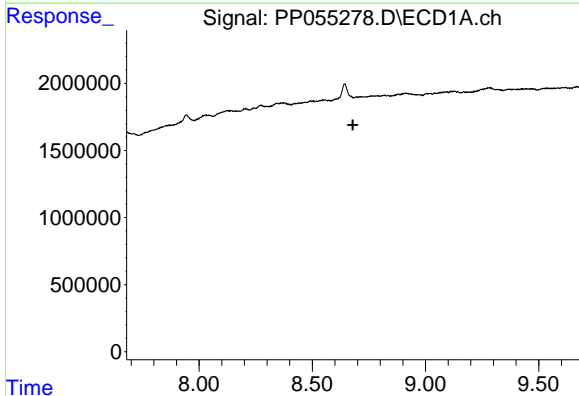
R.T.: 8.558 min  
 Delta R.T.: -0.027 min  
 Response: 51437  
 Conc: 0.21 ng/ml

Instrument :  
 ECD\_P  
 ClientSampleId :



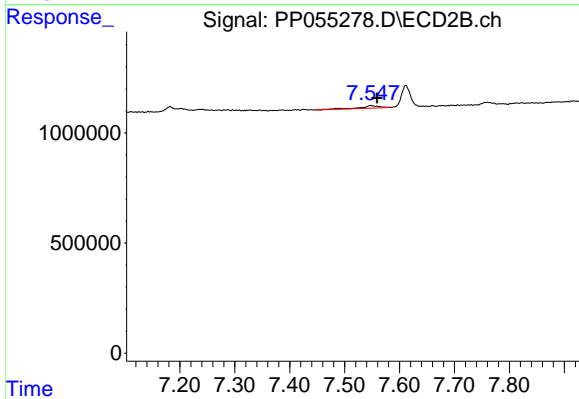
#41 AR-1268-1

R.T.: 0.000 min  
 Exp R.T. : 7.493 min  
 Response: 0  
 Conc: N.D.



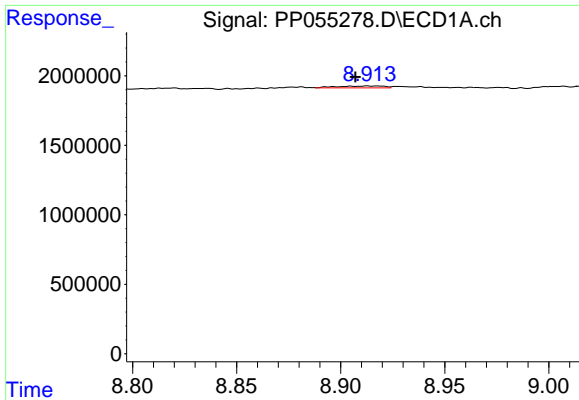
#42 AR-1268-2

R.T.: 0.000 min  
 Exp R.T. : 8.679 min  
 Response: 0  
 Conc: N.D.



#42 AR-1268-2

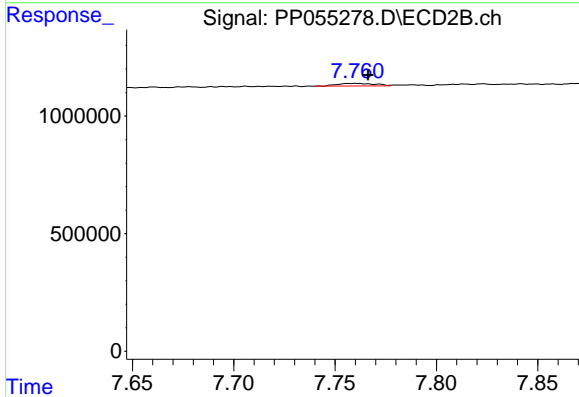
R.T.: 7.547 min  
 Delta R.T.: -0.012 min  
 Response: 291012  
 Conc: 1.49 ng/ml



#43 AR-1268-3

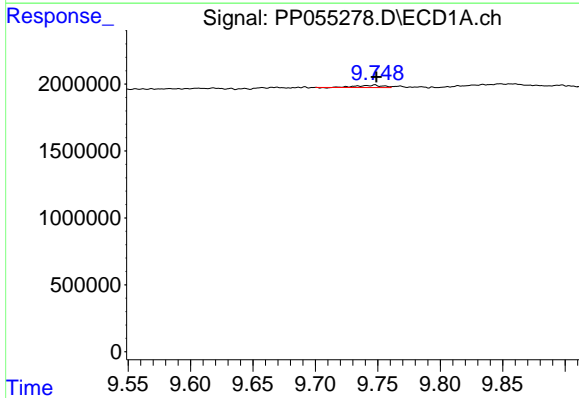
R.T.: 8.913 min  
 Delta R.T.: 0.006 min  
 Response: 203484  
 Conc: 1.02 ng/ml

Instrument :  
 ECD\_P  
 ClientSampleId :



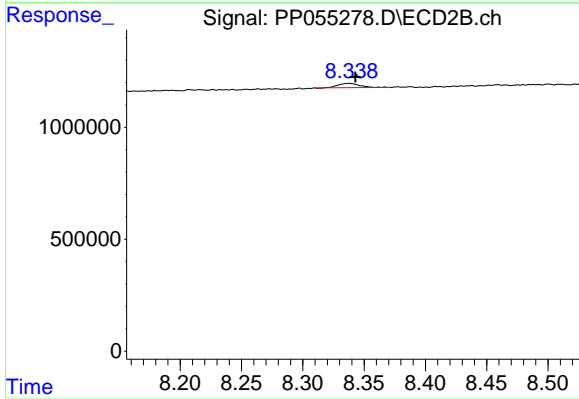
#43 AR-1268-3

R.T.: 7.760 min  
 Delta R.T.: -0.006 min  
 Response: 139874  
 Conc: 0.81 ng/ml



#45 AR-1268-5

R.T.: 9.748 min  
 Delta R.T.: -0.001 min  
 Response: 254335  
 Conc: 0.40 ng/ml



#45 AR-1268-5

R.T.: 8.338 min  
 Delta R.T.: -0.005 min  
 Response: 237072  
 Conc: 0.45 ng/ml