

Data Path : Z:\pestpcbsrv\HPCHEM1\ECD\_P\Data\PP020223\  
 Data File : PP055281.D  
 Signal(s) : Signal #1: ECD1A.ch Signal #2: ECD2B.ch  
 Acq On : 02 Feb 2023 21:31  
 Operator : YP\AJ  
 Sample : I.BLK  
 Misc :  
 ALS Vial : 2 Sample Multiplier: 1

Instrument :  
 ECD\_P  
 ClientSampleId :

Integration File signal 1: autoint1.e  
 Integration File signal 2: autoint2.e  
 Quant Time: Feb 03 04:38:30 2023  
 Quant Method : Z:\pestpcbsrv\HPCHEM1\ECD\_P\methods\PP012423.M  
 Quant Title : GC EXTRACTABLES  
 QLast Update : Tue Jan 24 03:37:45 2023  
 Response via : Initial Calibration  
 Integrator: ChemStation

Volume Inj. : 2 µl  
 Signal #1 Phase : ZB-MR1 Signal #2 Phase: ZB-MR2  
 Signal #1 Info : 30Mx0.32mmx 0.50µ Signal #2 Info : 30M x 0.32mm x 0.25µm

| Compound                    | RT#1   | RT#2   | Resp#1   | Resp#2   | ng/ml  | ng/ml    |
|-----------------------------|--------|--------|----------|----------|--------|----------|
| System Monitoring Compounds |        |        |          |          |        |          |
| 1) SA Tetrachlo...          | 4.328  | 3.575  | 32759093 | 28748644 | 18.841 | 19.150   |
| 2) SA Decachlor...          | 10.085 | 8.587  | 31929122 | 26263316 | 18.438 | 19.446   |
| Target Compounds            |        |        |          |          |        |          |
| 3) L1 AR-1016-1             | 5.503  | 4.670  | 84640    | 287495   | 1.259  | 5.809 #  |
| 4) L1 AR-1016-2             | 5.521  | 4.670  | 81869    | 287495   | 0.854  | 4.153 #  |
| 5) L1 AR-1016-3             | 5.576  | 0.000  | 273472   | 0        | 4.572  | N.D. #   |
| 6) L1 AR-1016-4             | 0.000  | 4.907  | 0        | 484929   | N.D.   | 15.433 # |
| 7) L1 AR-1016-5             | 5.978  | 0.000  | 40850    | 0        | 0.806  | N.D. #   |
| 8) L2 AR-1221-1             | 4.535  | 3.780  | 144361   | 103686   | 6.139  | 5.230    |
| 9) L2 AR-1221-2             | 4.636  | 3.873  | 676843   | 521027   | 38.096 | 35.151   |
| 10) L2 AR-1221-3            | 4.693  | 3.948  | 223913   | 154166   | 4.161  | 3.417    |
| 11) L3 AR-1232-1            | 4.693  | 3.948  | 223913   | 154166   | 5.045  | 4.183    |
| 12) L3 AR-1232-2            | 5.210f | 4.670  | 267096   | 287495   | 11.811 | 9.000    |
| 13) L3 AR-1232-3            | 5.521  | 0.000  | 81869    | 0        | 1.864  | N.D. #   |
| 14) L3 AR-1232-4            | 0.000  | 4.938  | 0        | 924921   | N.D.   | 57.355 # |
| 15) L3 AR-1232-5            | 5.776  | 0.000  | 178663   | 0        | 10.205 | N.D. #   |
| 16) L4 AR-1242-1            | 5.503  | 4.670  | 84640    | 287495   | 1.512  | 7.019 #  |
| 17) L4 AR-1242-2            | 5.521  | 4.670  | 81869    | 287495   | 1.026  | 5.035 #  |
| 18) L4 AR-1242-3            | 5.576  | 0.000  | 273472   | 0        | 5.507  | N.D. #   |
| 19) L4 AR-1242-4            | 0.000  | 4.938  | 0        | 924921   | N.D.   | 28.470 # |
| 20) L4 AR-1242-5            | 6.434  | 5.486f | 304641   | 3068079  | 6.851  | 82.096 # |
| 21) L5 AR-1248-1            | 5.503  | 4.670  | 84640    | 287495   | 2.030  | 9.273 #  |
| 22) L5 AR-1248-2            | 5.776  | 4.907  | 178663   | 484929   | 2.810  | 10.605 # |
| 23) L5 AR-1248-3            | 5.978  | 4.938  | 40850    | 924921   | 0.591  | 19.401 # |
| 24) L5 AR-1248-4            | 6.363f | 0.000  | 934862   | 0        | 12.328 | N.D. #   |
| 25) L5 AR-1248-5            | 6.434  | 5.486f | 304641   | 3068079  | 4.128  | 62.396 # |
| 26) L6 AR-1254-1            | 6.363  | 5.486f | 934862   | 3068079  | 11.850 | 37.991 # |
| 27) L6 AR-1254-2            | 6.587  | 5.623  | 26841    | 1400765  | 0.222  | 19.574 # |
| 28) L6 AR-1254-3            | 6.946  | 0.000  | 304387   | 0        | 2.485  | N.D. #   |
| 29) L6 AR-1254-4            | 7.218f | 0.000  | 904024   | 0        | 10.260 | N.D. #   |
| 30) L6 AR-1254-5            | 0.000  | 6.665  | 0        | 107060   | N.D.   | 1.129 #  |
| 31) L7 AR-1260-1            | 7.091f | 6.143  | 604182   | 367840   | 6.338  | 4.744 #  |
| 32) L7 AR-1260-2            | 7.393f | 6.363f | 1837092  | 60995    | 16.323 | 0.678 #  |
| 33) L7 AR-1260-3            | 7.730  | 0.000  | 16395    | 0        | 0.204  | N.D. #   |
| 34) L7 AR-1260-4            | 7.964  | 0.000  | 785661   | 0        | 8.093  | N.D. #   |
| 35) L7 AR-1260-5            | 8.278  | 7.208  | 564087   | 29140    | 3.172  | 0.190 #  |
| 36) L8 AR-1262-1            | 7.730  | 6.776f | 16395    | 27028    | 0.139  | 0.629 #  |
| 37) L8 AR-1262-2            | 8.278  | 0.000  | 564087   | 0        | 2.801  | N.D. #   |
| 38) L8 AR-1262-3            | 0.000  | 7.497  | 0        | 193353   | N.D.   | 2.654 #  |
| 39) L8 AR-1262-4            | 8.650f | 7.551  | 744143   | 78466    | 9.679  | 0.600 #  |
| 41) L9 AR-1268-1            | 0.000  | 7.497  | 0        | 193353   | N.D.   | 0.894 #  |
| 42) L9 AR-1268-2            | 8.650f | 7.551  | 744143   | 78466    | 3.276  | 0.402 #  |

Data Path : Z:\pestpcbsrv\HPCHEM1\ECD\_P\Data\PP020223\  
 Data File : PP055281.D  
 Signal(s) : Signal #1: ECD1A.ch Signal #2: ECD2B.ch  
 Acq On : 02 Feb 2023 21:31  
 Operator : YP\AJ  
 Sample : I.BLK  
 Misc :  
 ALS Vial : 2 Sample Multiplier: 1

Instrument :  
 ECD\_P  
 ClientSampleId :

Integration File signal 1: autoint1.e  
 Integration File signal 2: autoint2.e  
 Quant Time: Feb 03 04:38:30 2023  
 Quant Method : Z:\pestpcbsrv\HPCHEM1\ECD\_P\methods\PP012423.M  
 Quant Title : GC EXTRACTABLES  
 QLast Update : Tue Jan 24 03:37:45 2023  
 Response via : Initial Calibration  
 Integrator: ChemStation

Volume Inj. : 2 µl  
 Signal #1 Phase : ZB-MR1 Signal #2 Phase: ZB-MR2  
 Signal #1 Info : 30Mx0.32mmx 0.50µ Signal #2 Info : 30M x 0.32mm x 0.25µm

|     | Compound     | RT#1  | RT#2  | Resp#1 | Resp#2 | ng/ml | ng/ml   |
|-----|--------------|-------|-------|--------|--------|-------|---------|
| 43) | L9 AR-1268-3 | 8.905 | 0.000 | 269813 | 0      | 1.351 | N.D. #  |
| 45) | L9 AR-1268-5 | 9.750 | 8.338 | 160106 | 77464  | 0.252 | 0.147 # |

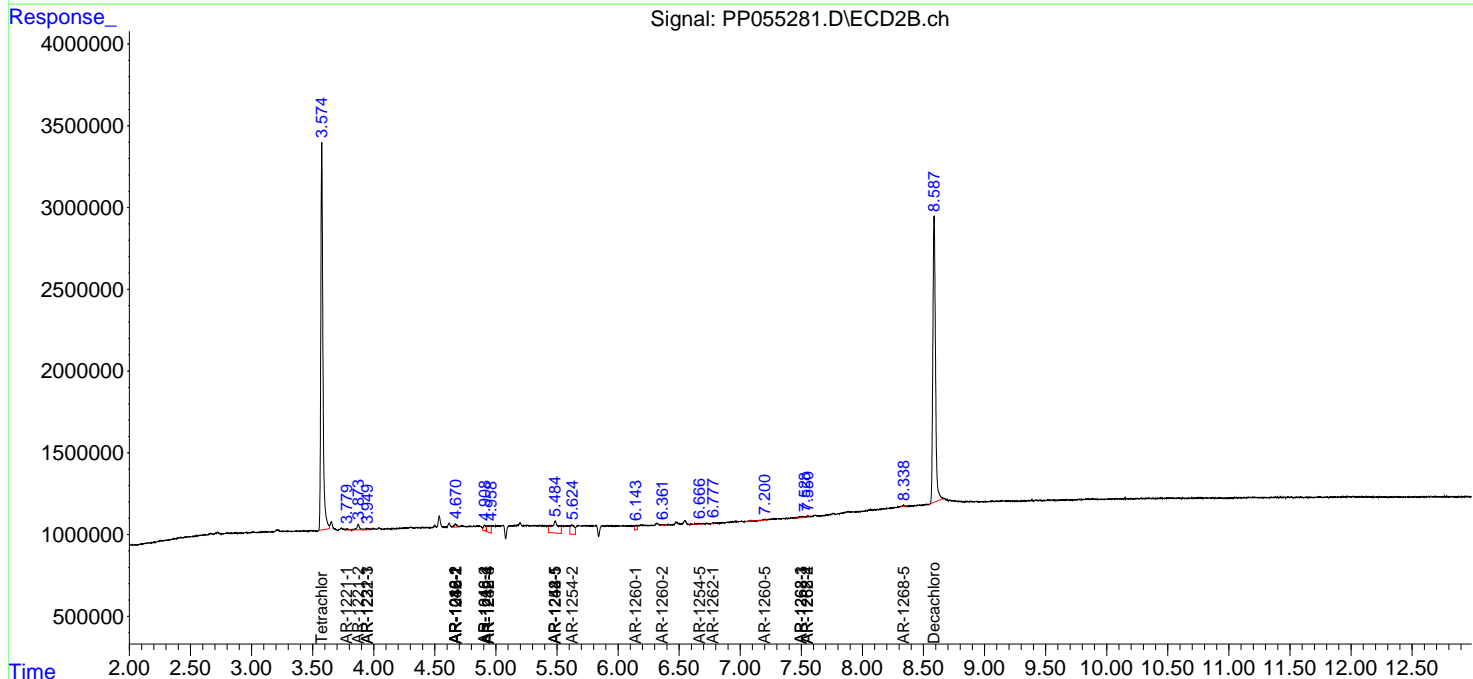
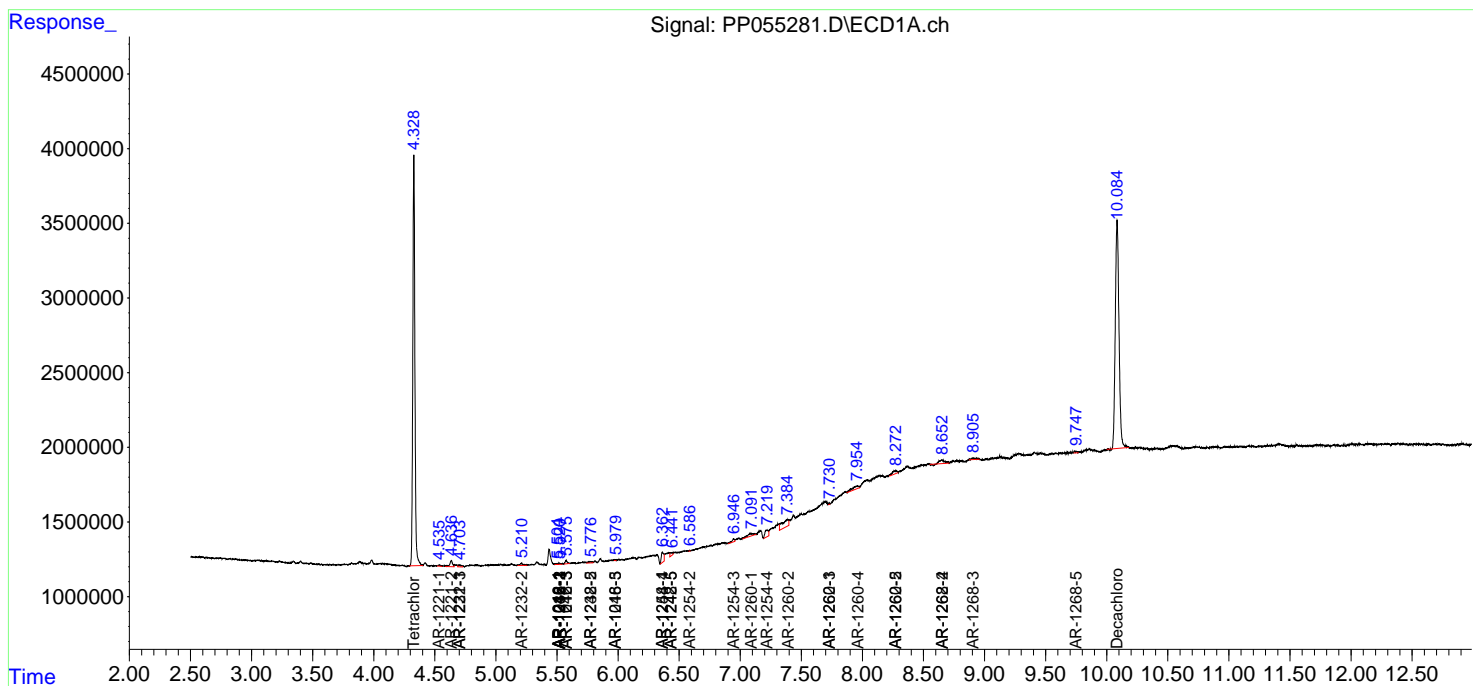
(f)=RT Delta > 1/2 Window (#)=Amounts differ by > 25% (m)=manual int.

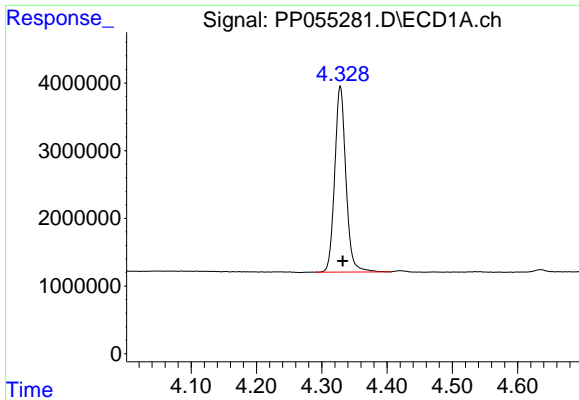
Data Path : Z:\pestpcbsrv\HPCHEM1\ECD\_P\Data\PP020223\  
 Data File : PP055281.D  
 Signal(s) : Signal #1: ECD1A.ch Signal #2: ECD2B.ch  
 Acq On : 02 Feb 2023 21:31  
 Operator : YP\AJ  
 Sample : I.BLK  
 Misc :  
 ALS Vial : 2 Sample Multiplier: 1

Instrument :  
 ECD\_P  
 ClientSampleId :

Integration File signal 1: autoint1.e  
 Integration File signal 2: autoint2.e  
 Quant Time: Feb 03 04:38:30 2023  
 Quant Method : Z:\pestpcbsrv\HPCHEM1\ECD\_P\methods\PP012423.M  
 Quant Title : GC EXTRACTABLES  
 QLast Update : Tue Jan 24 03:37:45 2023  
 Response via : Initial Calibration  
 Integrator: ChemStation

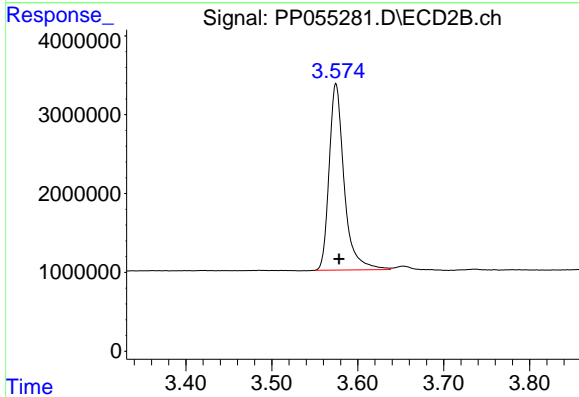
Volume Inj. : 2 µl  
 Signal #1 Phase : ZB-MR1 Signal #2 Phase: ZB-MR2  
 Signal #1 Info : 30Mx0.32mmx 0.50µ Signal #2 Info : 30M x 0.32mm x 0.25µm



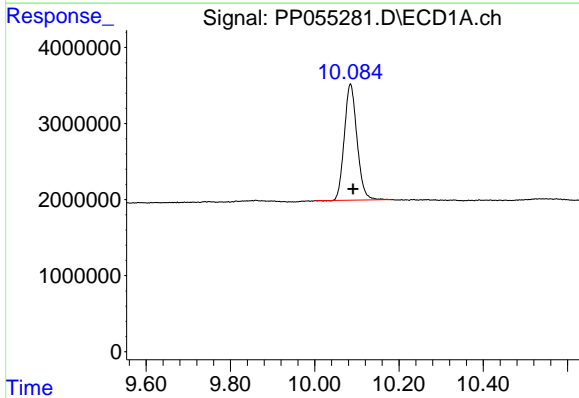


#1 Tetrachloro-m-xylene  
R.T.: 4.328 min  
Delta R.T.: -0.004 min  
Response: 32759093  
Conc: 18.84 ng/ml

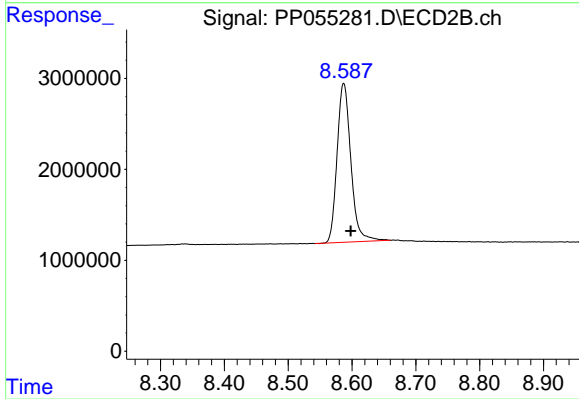
Instrument :  
ECD\_P  
ClientSampleId :



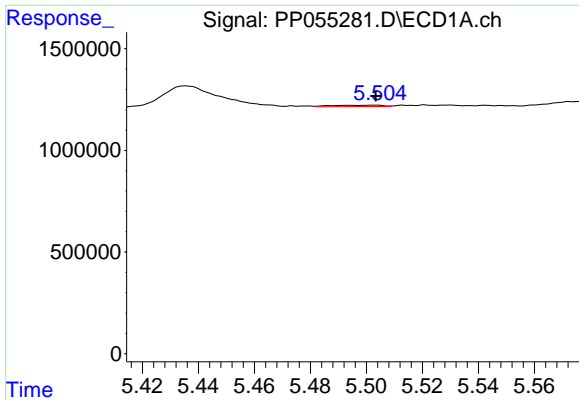
#1 Tetrachloro-m-xylene  
R.T.: 3.575 min  
Delta R.T.: -0.004 min  
Response: 28748644  
Conc: 19.15 ng/ml



#2 Decachlorobiphenyl  
R.T.: 10.085 min  
Delta R.T.: -0.006 min  
Response: 31929122  
Conc: 18.44 ng/ml



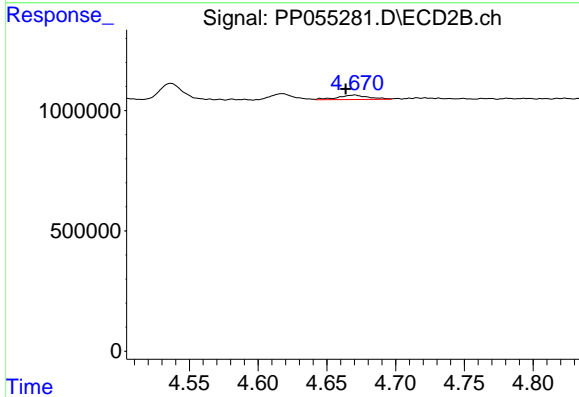
#2 Decachlorobiphenyl  
R.T.: 8.587 min  
Delta R.T.: -0.011 min  
Response: 26263316  
Conc: 19.45 ng/ml



#3 AR-1016-1

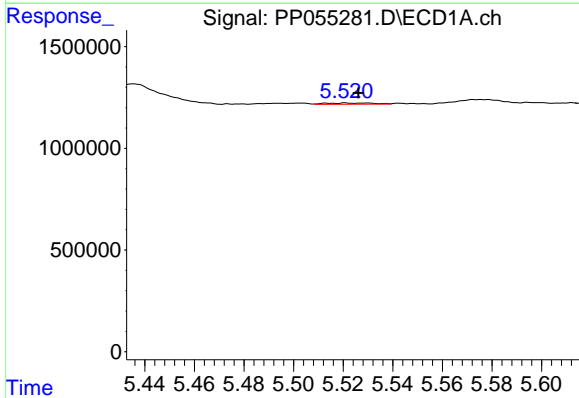
R.T.: 5.503 min  
 Delta R.T.: 0.000 min  
 Response: 84640  
 Conc: 1.26 ng/ml

Instrument :  
 ECD\_P  
 ClientSampleId :



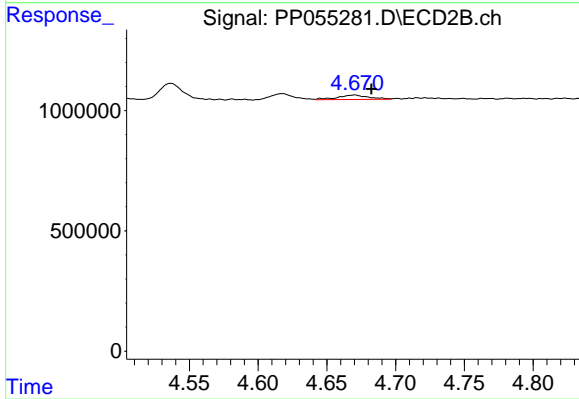
#3 AR-1016-1

R.T.: 4.670 min  
 Delta R.T.: 0.006 min  
 Response: 287495  
 Conc: 5.81 ng/ml



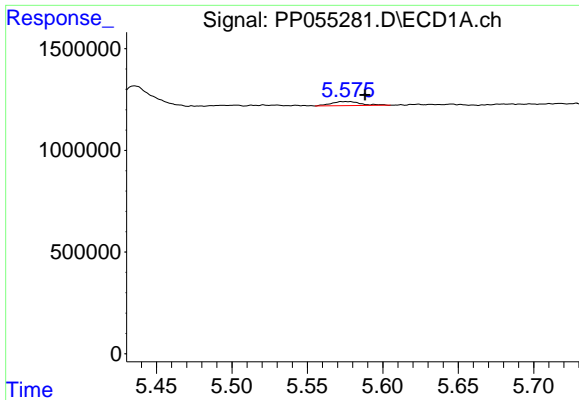
#4 AR-1016-2

R.T.: 5.521 min  
 Delta R.T.: -0.005 min  
 Response: 81869  
 Conc: 0.85 ng/ml



#4 AR-1016-2

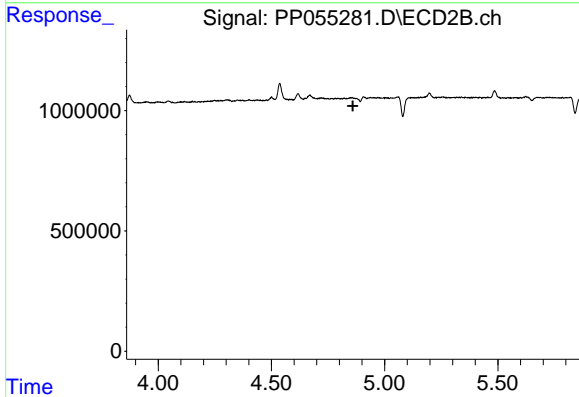
R.T.: 4.670 min  
 Delta R.T.: -0.012 min  
 Response: 287495  
 Conc: 4.15 ng/ml



#5 AR-1016-3

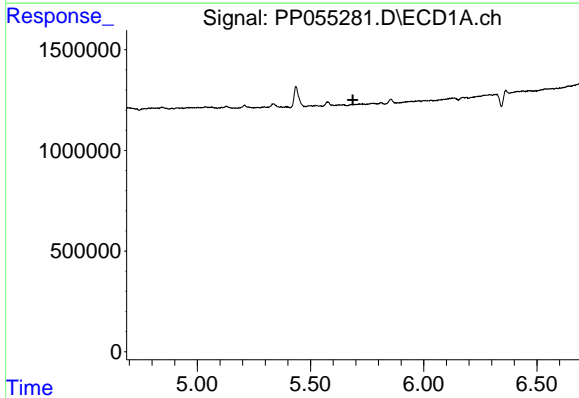
R.T.: 5.576 min  
 Delta R.T.: -0.012 min  
 Response: 273472  
 Conc: 4.57 ng/ml

Instrument :  
 ECD\_P  
 ClientSampleId :



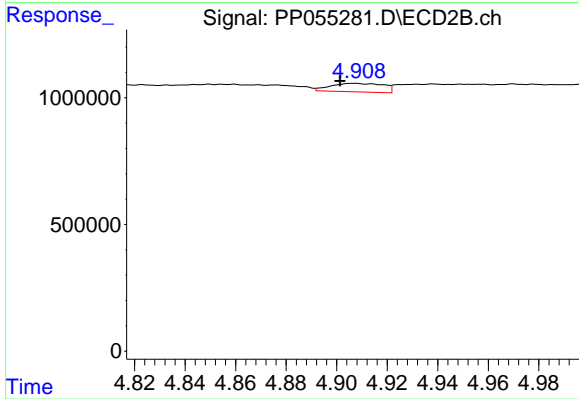
#5 AR-1016-3

R.T.: 0.000 min  
 Exp R.T. : 4.859 min  
 Response: 0  
 Conc: N.D.



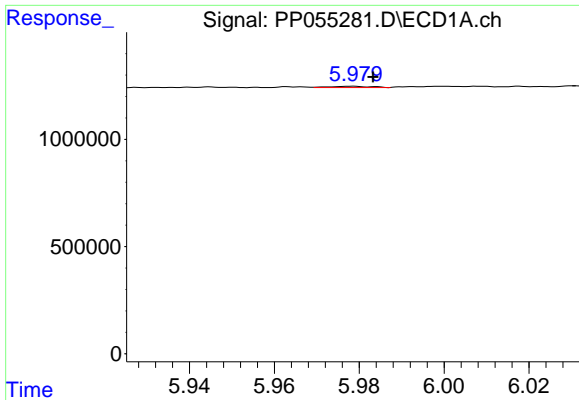
#6 AR-1016-4

R.T.: 0.000 min  
 Exp R.T. : 5.687 min  
 Response: 0  
 Conc: N.D.



#6 AR-1016-4

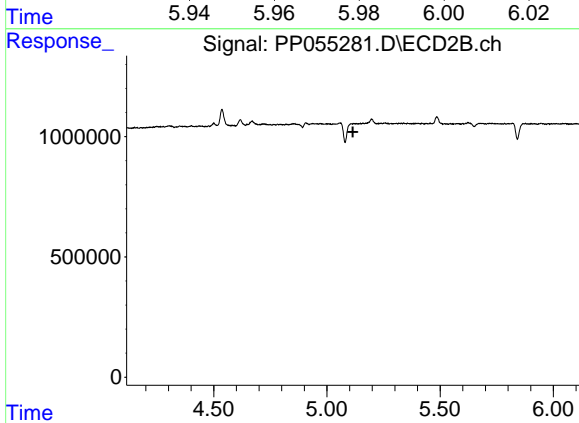
R.T.: 4.907 min  
 Delta R.T.: 0.005 min  
 Response: 484929  
 Conc: 15.43 ng/ml



#7 AR-1016-5

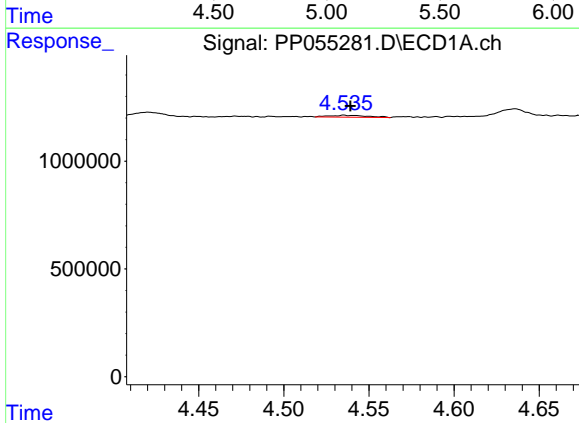
R.T.: 5.978 min  
 Delta R.T.: -0.005 min  
 Response: 40850  
 Conc: 0.81 ng/ml

Instrument :  
 ECD\_P  
 ClientSampleId :



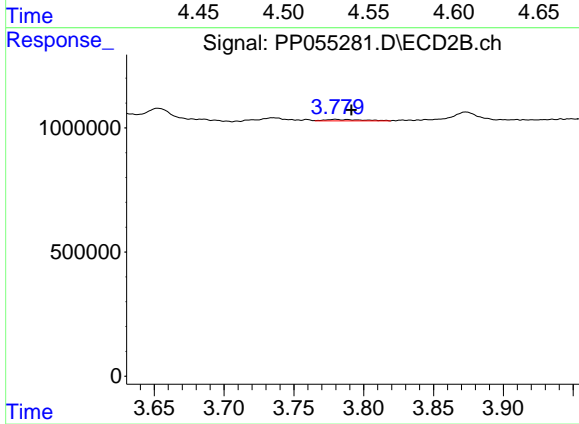
#7 AR-1016-5

R.T.: 0.000 min  
 Exp R.T. : 5.115 min  
 Response: 0  
 Conc: N.D.



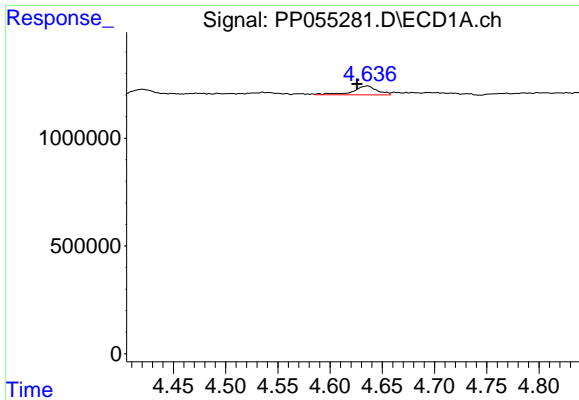
#8 AR-1221-1

R.T.: 4.535 min  
 Delta R.T.: -0.004 min  
 Response: 144361  
 Conc: 6.14 ng/ml



#8 AR-1221-1

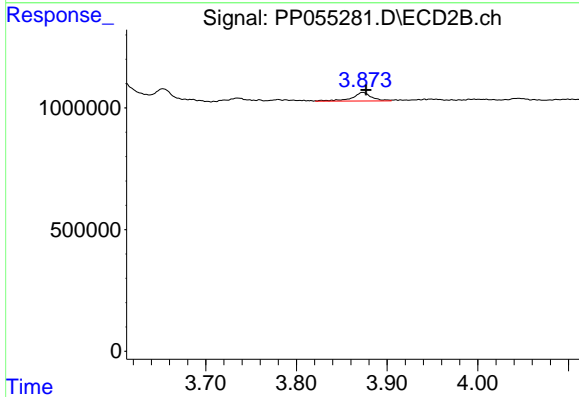
R.T.: 3.780 min  
 Delta R.T.: -0.011 min  
 Response: 103686  
 Conc: 5.23 ng/ml



#9 AR-1221-2

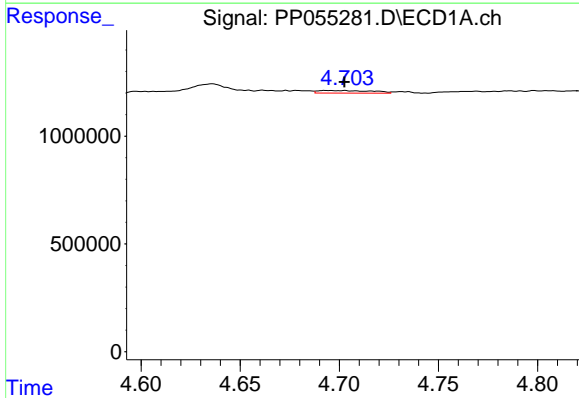
R.T.: 4.636 min  
 Delta R.T.: 0.010 min  
 Response: 676843  
 Conc: 38.10 ng/ml

Instrument :  
 ECD\_P  
 ClientSampleId :



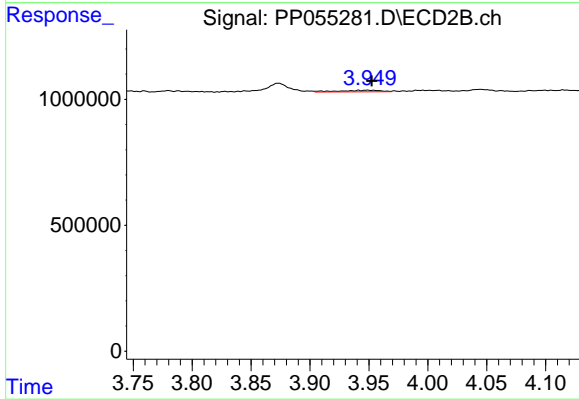
#9 AR-1221-2

R.T.: 3.873 min  
 Delta R.T.: -0.003 min  
 Response: 521027  
 Conc: 35.15 ng/ml



#10 AR-1221-3

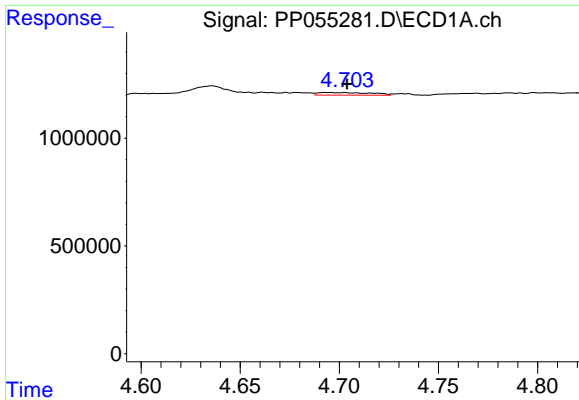
R.T.: 4.693 min  
 Delta R.T.: -0.009 min  
 Response: 223913  
 Conc: 4.16 ng/ml



#10 AR-1221-3

R.T.: 3.948 min  
 Delta R.T.: -0.004 min  
 Response: 154166  
 Conc: 3.42 ng/ml

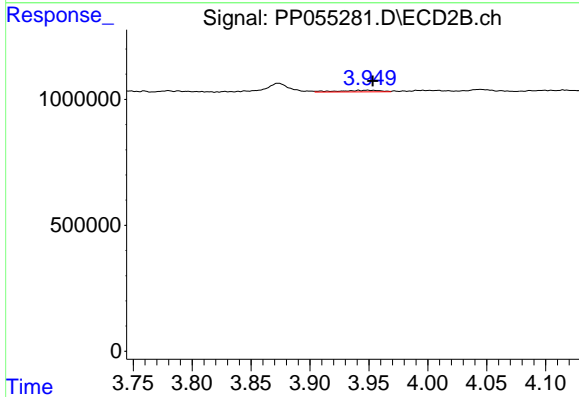




#11 AR-1232-1

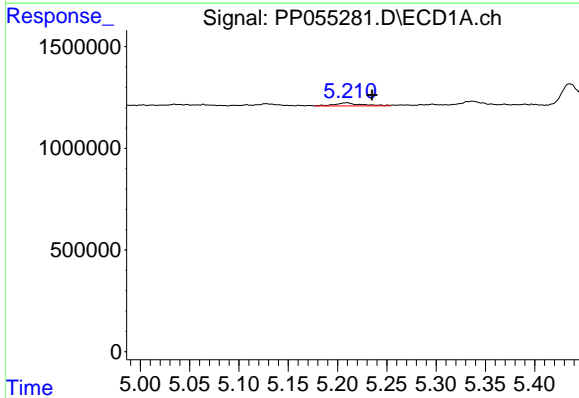
R.T.: 4.693 min  
 Delta R.T.: -0.010 min  
 Response: 223913  
 Conc: 5.05 ng/ml

Instrument :  
 ECD\_P  
 ClientSampleId :



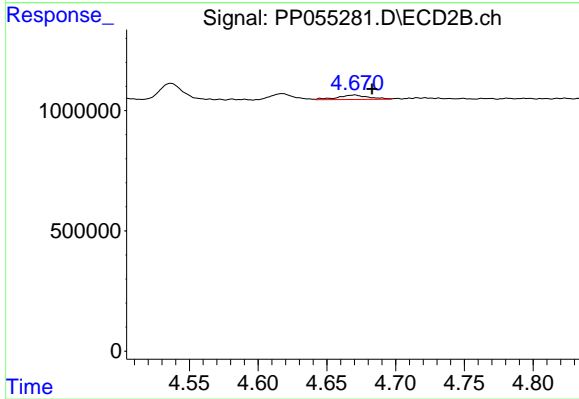
#11 AR-1232-1

R.T.: 3.948 min  
 Delta R.T.: -0.005 min  
 Response: 154166  
 Conc: 4.18 ng/ml



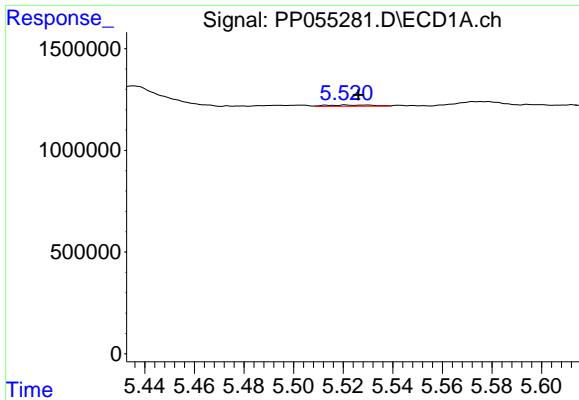
#12 AR-1232-2

R.T.: 5.210 min  
 Delta R.T.: -0.025 min  
 Response: 267096  
 Conc: 11.81 ng/ml



#12 AR-1232-2

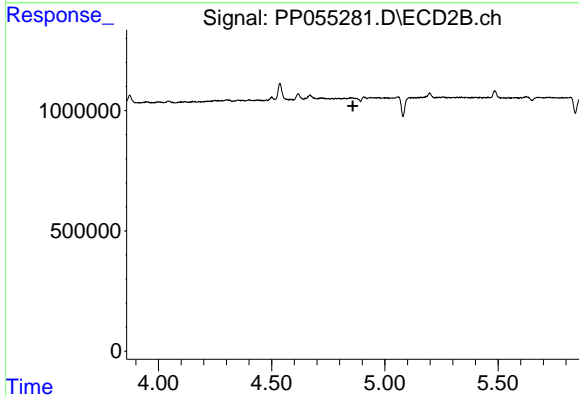
R.T.: 4.670 min  
 Delta R.T.: -0.013 min  
 Response: 287495  
 Conc: 9.00 ng/ml



#13 AR-1232-3

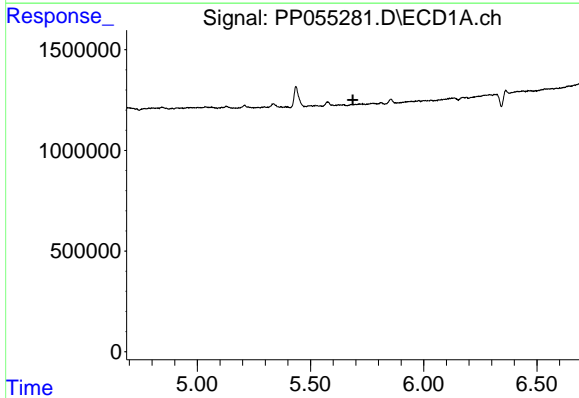
R.T.: 5.521 min  
 Delta R.T.: -0.005 min  
 Response: 81869  
 Conc: 1.86 ng/ml

Instrument :  
 ECD\_P  
 ClientSampleId :



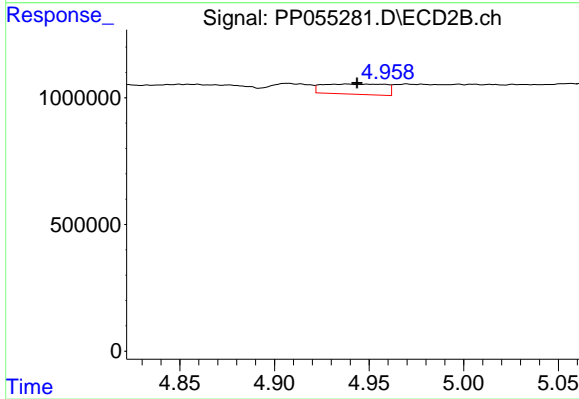
#13 AR-1232-3

R.T.: 0.000 min  
 Exp R.T. : 4.859 min  
 Response: 0  
 Conc: N.D.



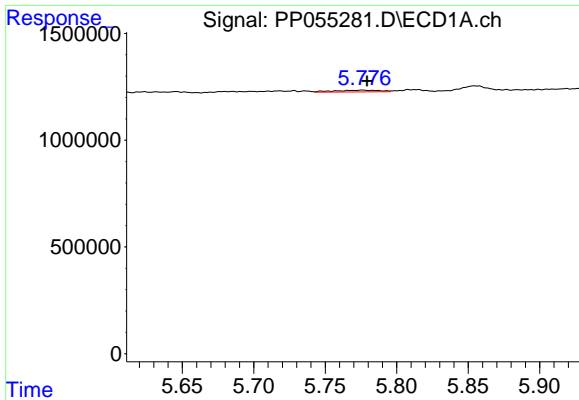
#14 AR-1232-4

R.T.: 0.000 min  
 Exp R.T. : 5.687 min  
 Response: 0  
 Conc: N.D.



#14 AR-1232-4

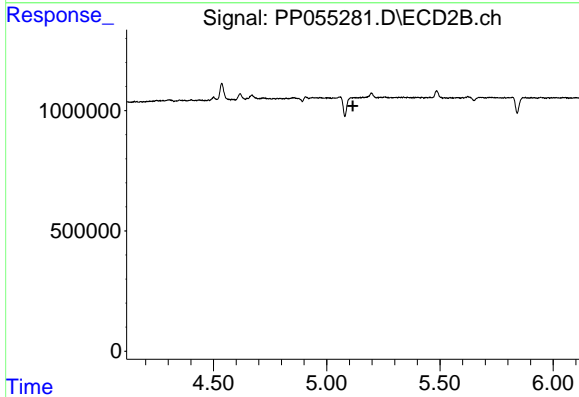
R.T.: 4.938 min  
 Delta R.T.: -0.005 min  
 Response: 924921  
 Conc: 57.36 ng/ml



#15 AR-1232-5

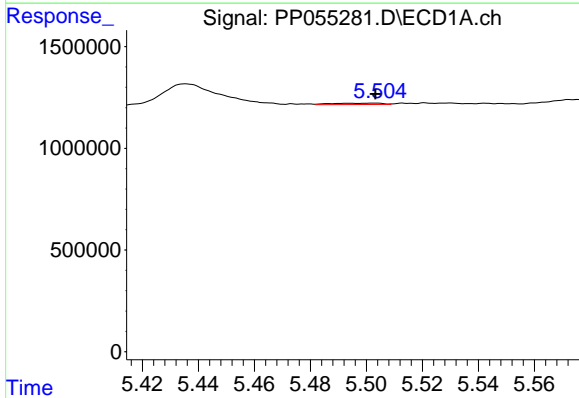
R.T.: 5.776 min  
 Delta R.T.: -0.003 min  
 Response: 178663  
 Conc: 10.21 ng/ml

Instrument :  
 ECD\_P  
 ClientSampleId :



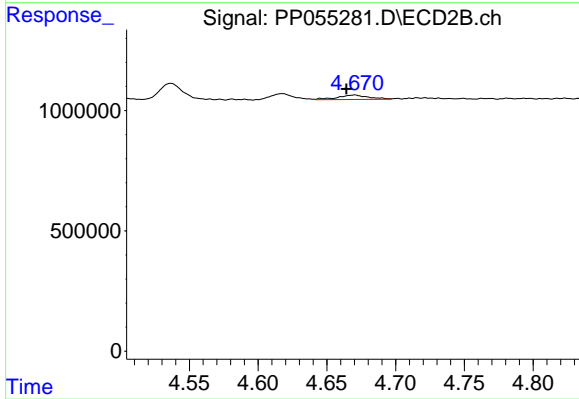
#15 AR-1232-5

R.T.: 0.000 min  
 Exp R.T. : 5.115 min  
 Response: 0  
 Conc: N.D.



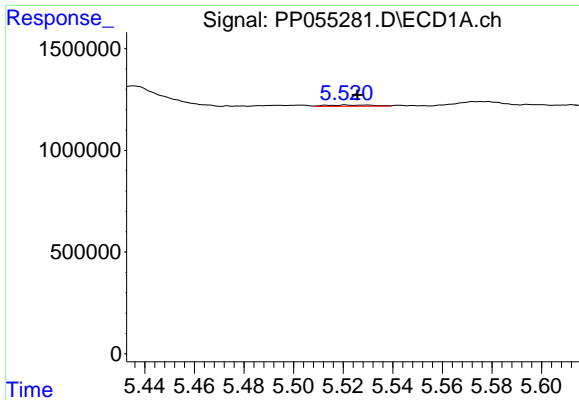
#16 AR-1242-1

R.T.: 5.503 min  
 Delta R.T.: 0.000 min  
 Response: 84640  
 Conc: 1.51 ng/ml



#16 AR-1242-1

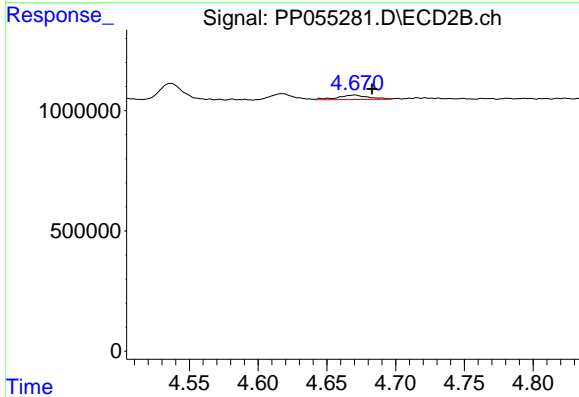
R.T.: 4.670 min  
 Delta R.T.: 0.006 min  
 Response: 287495  
 Conc: 7.02 ng/ml



#17 AR-1242-2

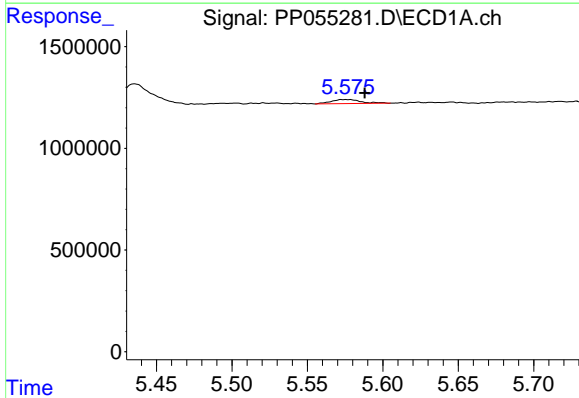
R.T.: 5.521 min  
 Delta R.T.: -0.005 min  
 Response: 81869  
 Conc: 1.03 ng/ml

Instrument :  
 ECD\_P  
 ClientSampleId :



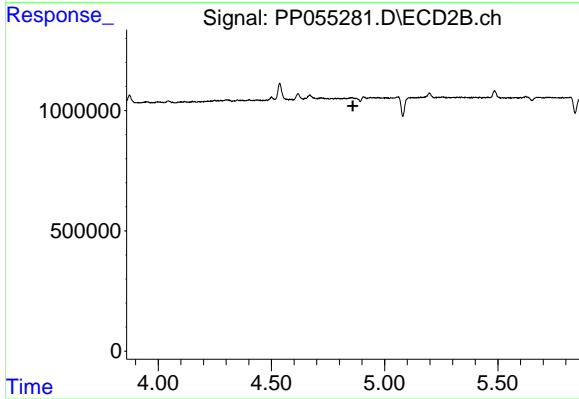
#17 AR-1242-2

R.T.: 4.670 min  
 Delta R.T.: -0.013 min  
 Response: 287495  
 Conc: 5.03 ng/ml



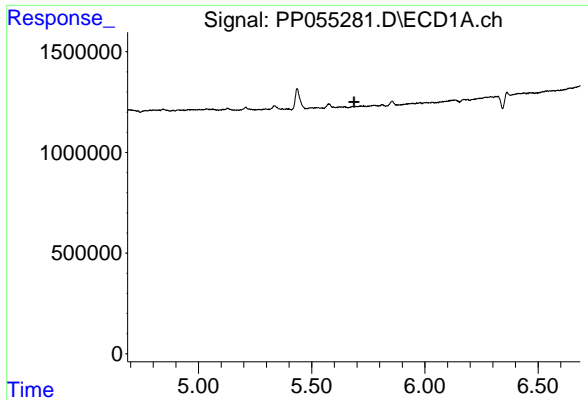
#18 AR-1242-3

R.T.: 5.576 min  
 Delta R.T.: -0.012 min  
 Response: 273472  
 Conc: 5.51 ng/ml



#18 AR-1242-3

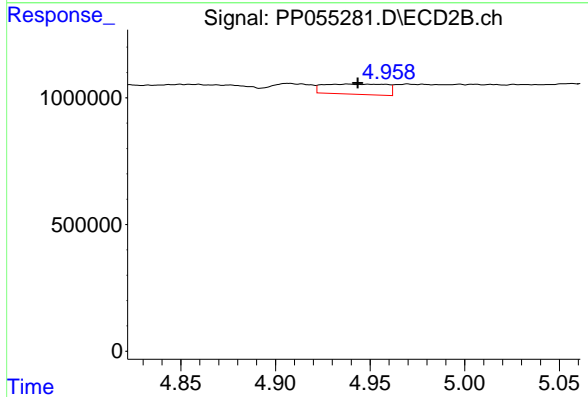
R.T.: 0.000 min  
 Exp R.T. : 4.860 min  
 Response: 0  
 Conc: N.D.



#19 AR-1242-4

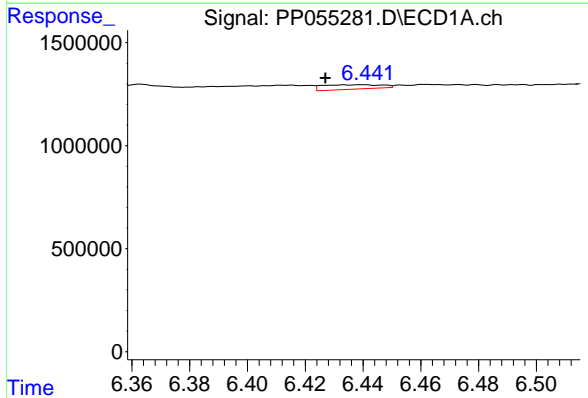
R.T.: 0.000 min  
 Exp R.T.: 5.687 min  
 Response: 0  
 Conc: N.D.

Instrument :  
 ECD\_P  
 ClientSampleId :



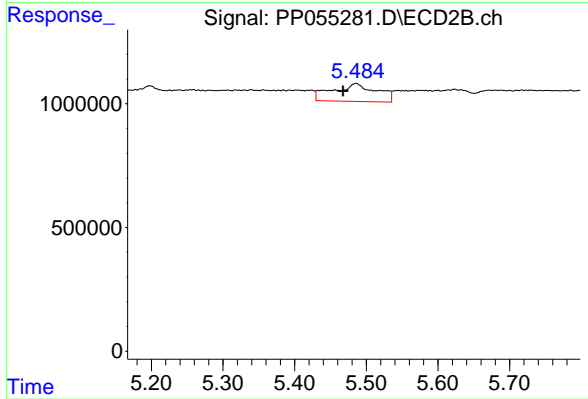
#19 AR-1242-4

R.T.: 4.938 min  
 Delta R.T.: -0.005 min  
 Response: 924921  
 Conc: 28.47 ng/ml



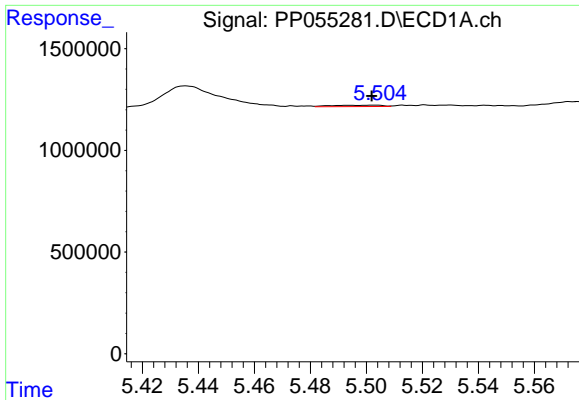
#20 AR-1242-5

R.T.: 6.434 min  
 Delta R.T.: 0.007 min  
 Response: 304641  
 Conc: 6.85 ng/ml



#20 AR-1242-5

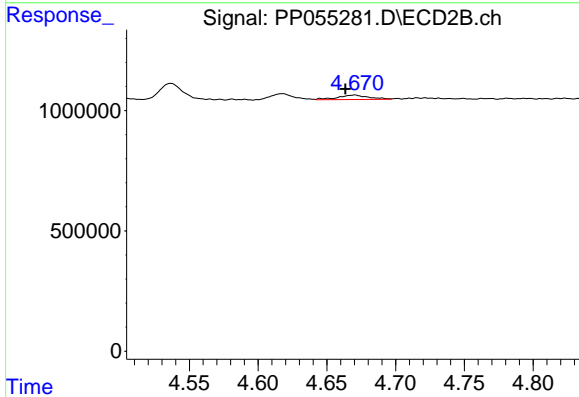
R.T.: 5.486 min  
 Delta R.T.: 0.018 min  
 Response: 3068079  
 Conc: 82.10 ng/ml



#21 AR-1248-1

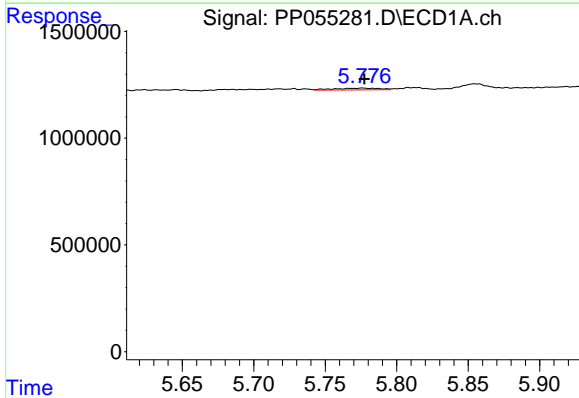
R.T.: 5.503 min  
 Delta R.T.: 0.001 min  
 Response: 84640  
 Conc: 2.03 ng/ml

Instrument :  
 ECD\_P  
 ClientSampleId :



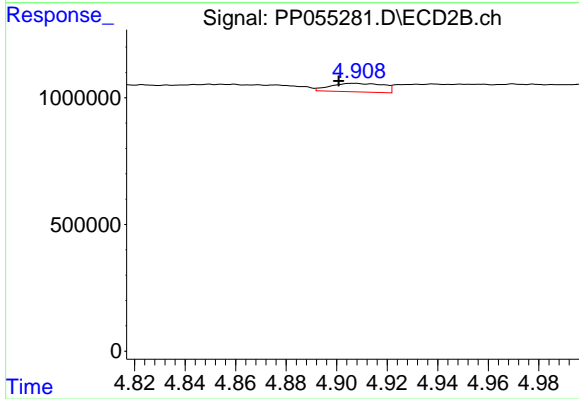
#21 AR-1248-1

R.T.: 4.670 min  
 Delta R.T.: 0.007 min  
 Response: 287495  
 Conc: 9.27 ng/ml



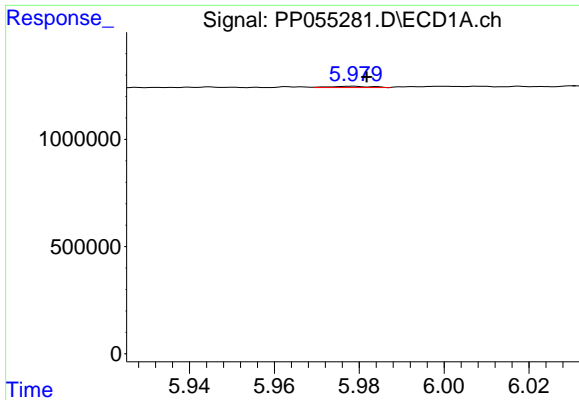
#22 AR-1248-2

R.T.: 5.776 min  
 Delta R.T.: -0.001 min  
 Response: 178663  
 Conc: 2.81 ng/ml



#22 AR-1248-2

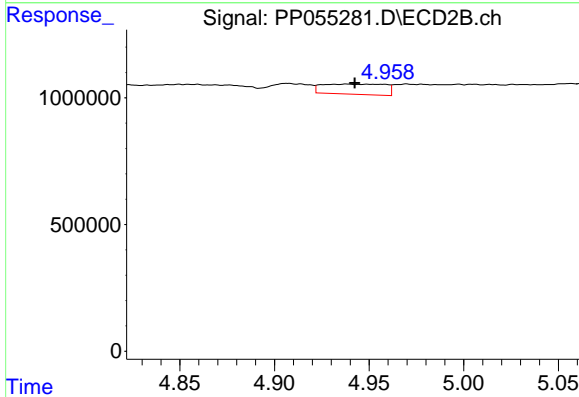
R.T.: 4.907 min  
 Delta R.T.: 0.006 min  
 Response: 484929  
 Conc: 10.60 ng/ml



#23 AR-1248-3

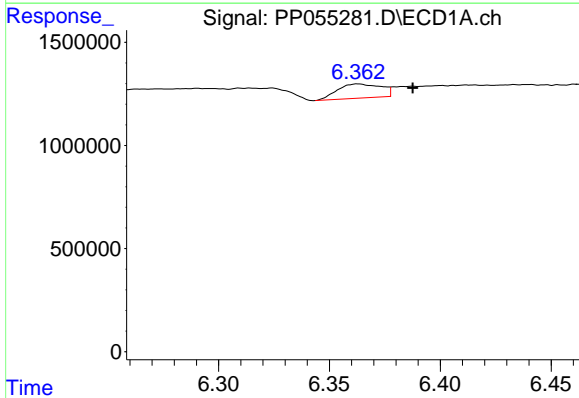
R.T.: 5.978 min  
 Delta R.T.: -0.003 min  
 Response: 40850  
 Conc: 0.59 ng/ml

Instrument :  
 ECD\_P  
 ClientSampleId :



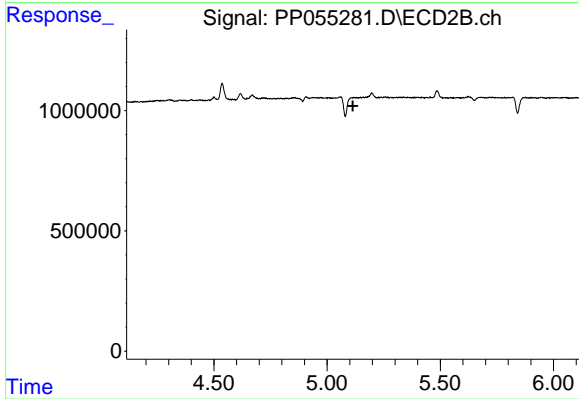
#23 AR-1248-3

R.T.: 4.938 min  
 Delta R.T.: -0.004 min  
 Response: 924921  
 Conc: 19.40 ng/ml



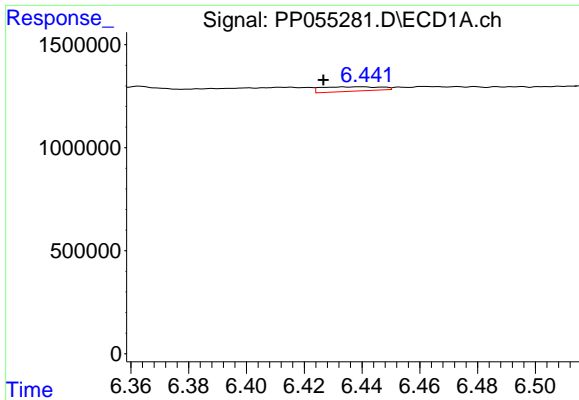
#24 AR-1248-4

R.T.: 6.363 min  
 Delta R.T.: -0.025 min  
 Response: 934862  
 Conc: 12.33 ng/ml



#24 AR-1248-4

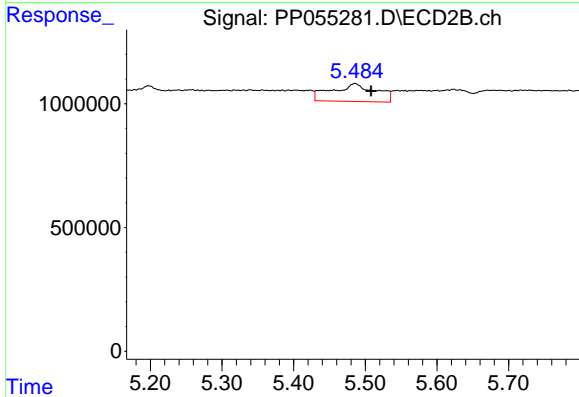
R.T.: 0.000 min  
 Exp R.T.: 5.114 min  
 Response: 0  
 Conc: N.D.



#25 AR-1248-5

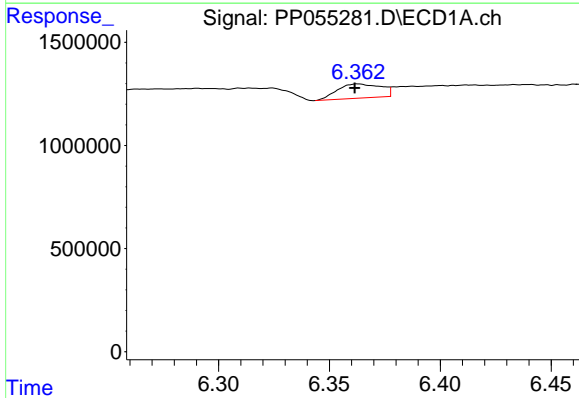
R.T.: 6.434 min  
 Delta R.T.: 0.007 min  
 Response: 304641  
 Conc: 4.13 ng/ml

Instrument :  
 ECD\_P  
 ClientSampleId :



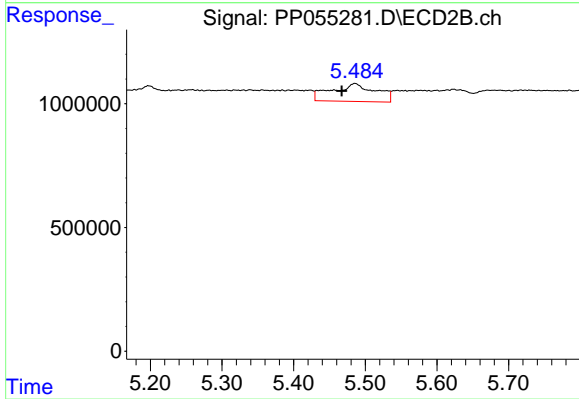
#25 AR-1248-5

R.T.: 5.486 min  
 Delta R.T.: -0.023 min  
 Response: 3068079  
 Conc: 62.40 ng/ml



#26 AR-1254-1

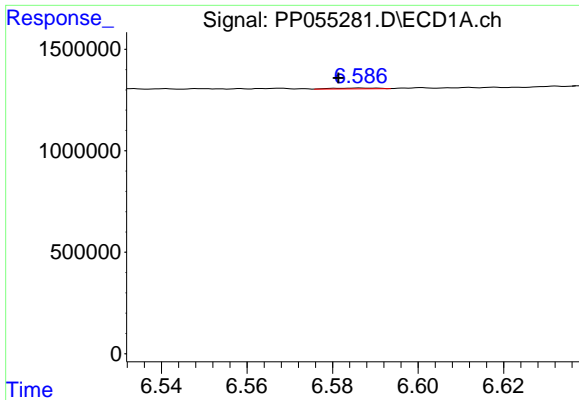
R.T.: 6.363 min  
 Delta R.T.: 0.002 min  
 Response: 934862  
 Conc: 11.85 ng/ml



#26 AR-1254-1

R.T.: 5.486 min  
 Delta R.T.: 0.019 min  
 Response: 3068079  
 Conc: 37.99 ng/ml

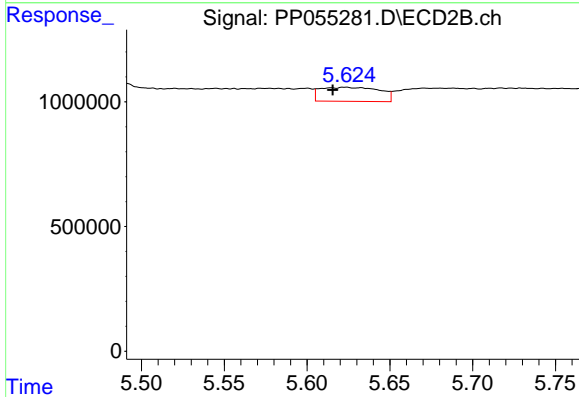




#27 AR-1254-2

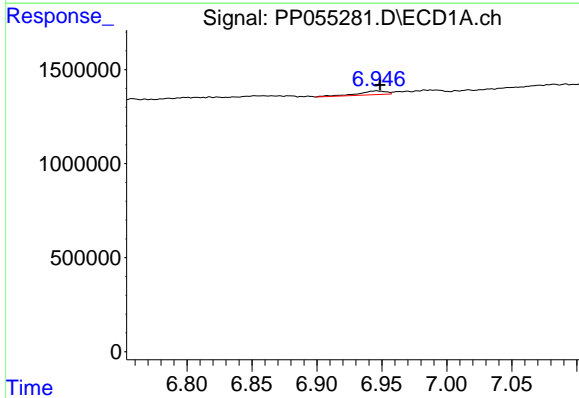
R.T.: 6.587 min  
 Delta R.T.: 0.005 min  
 Response: 26841  
 Conc: 0.22 ng/ml

Instrument :  
 ECD\_P  
 ClientSampleId :



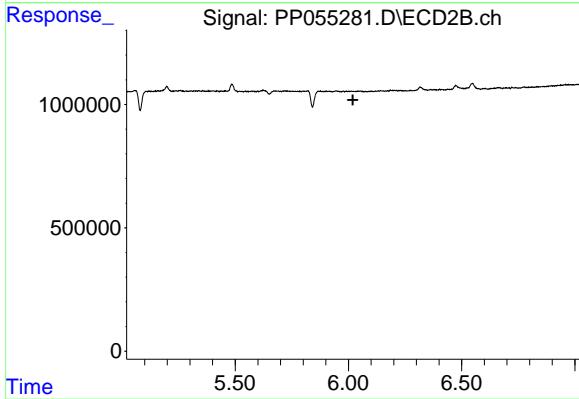
#27 AR-1254-2

R.T.: 5.623 min  
 Delta R.T.: 0.008 min  
 Response: 1400765  
 Conc: 19.57 ng/ml



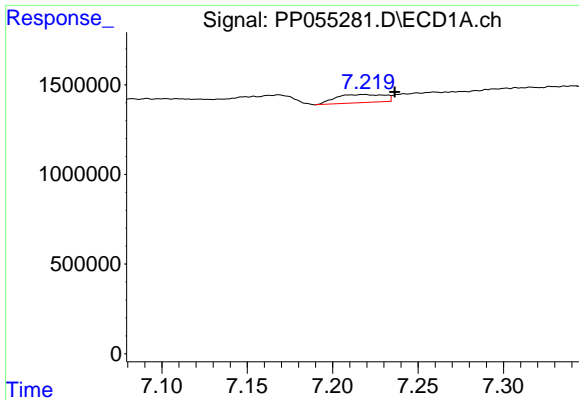
#28 AR-1254-3

R.T.: 6.946 min  
 Delta R.T.: -0.003 min  
 Response: 304387  
 Conc: 2.48 ng/ml



#28 AR-1254-3

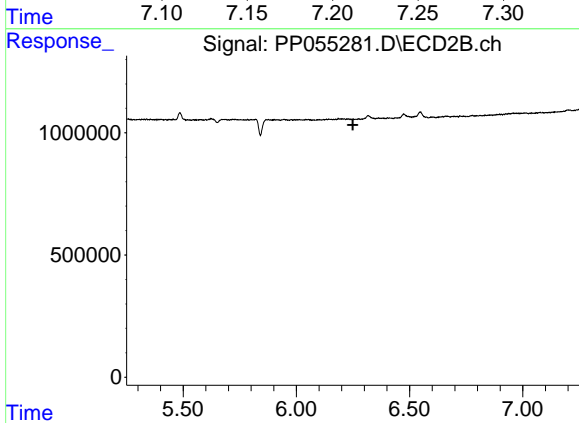
R.T.: 0.000 min  
 Exp R.T. : 6.020 min  
 Response: 0  
 Conc: N.D.



#29 AR-1254-4

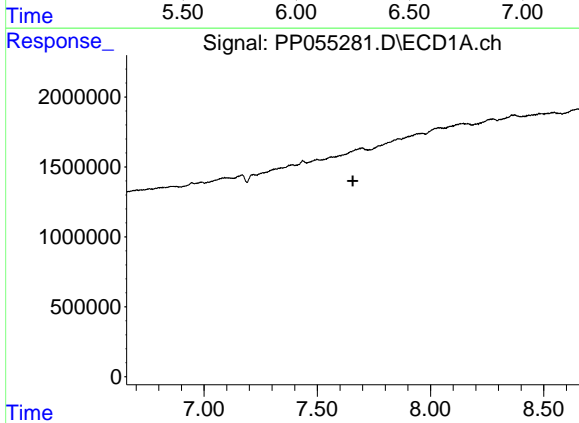
R.T.: 7.218 min  
 Delta R.T.: -0.018 min  
 Response: 904024  
 Conc: 10.26 ng/ml

Instrument :  
 ECD\_P  
 ClientSampleId :



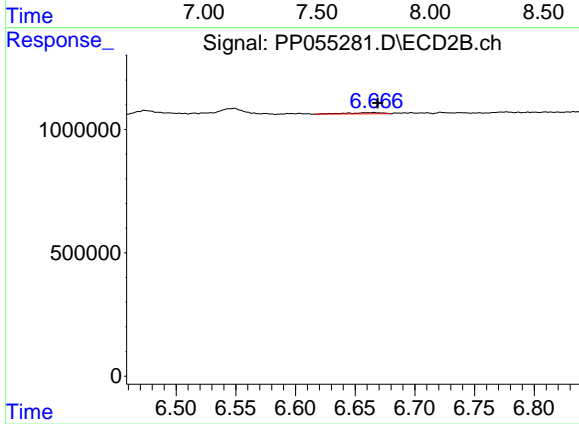
#29 AR-1254-4

R.T.: 0.000 min  
 Exp R.T. : 6.250 min  
 Response: 0  
 Conc: N.D.



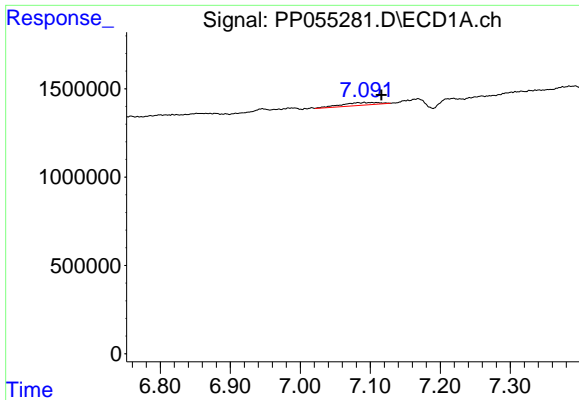
#30 AR-1254-5

R.T.: 0.000 min  
 Exp R.T. : 7.657 min  
 Response: 0  
 Conc: N.D.



#30 AR-1254-5

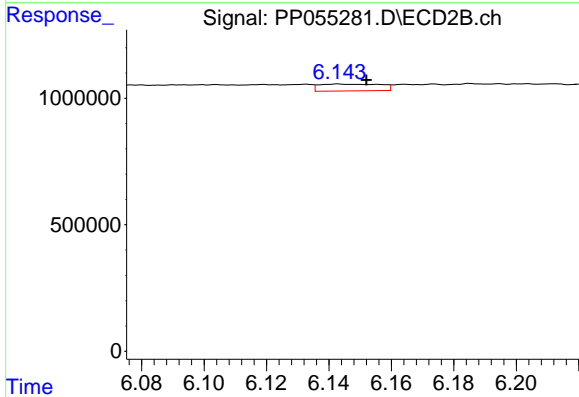
R.T.: 6.665 min  
 Delta R.T.: -0.004 min  
 Response: 107060  
 Conc: 1.13 ng/ml



#31 AR-1260-1

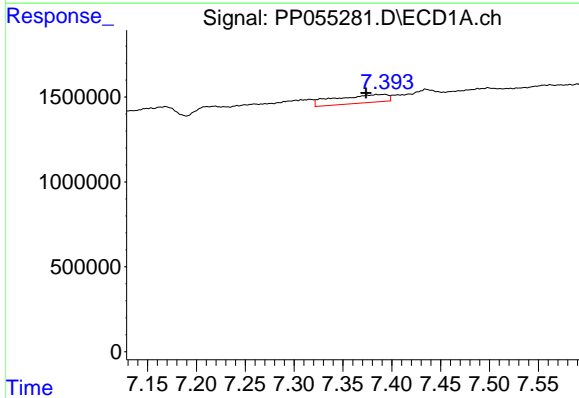
R.T.: 7.091 min  
 Delta R.T.: -0.024 min  
 Response: 604182  
 Conc: 6.34 ng/ml

Instrument :  
 ECD\_P  
 ClientSampleId :



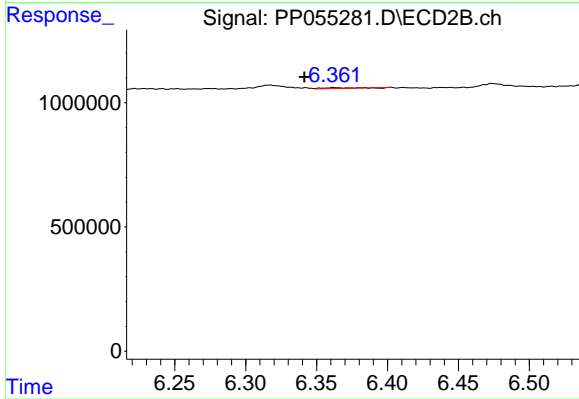
#31 AR-1260-1

R.T.: 6.143 min  
 Delta R.T.: -0.009 min  
 Response: 367840  
 Conc: 4.74 ng/ml



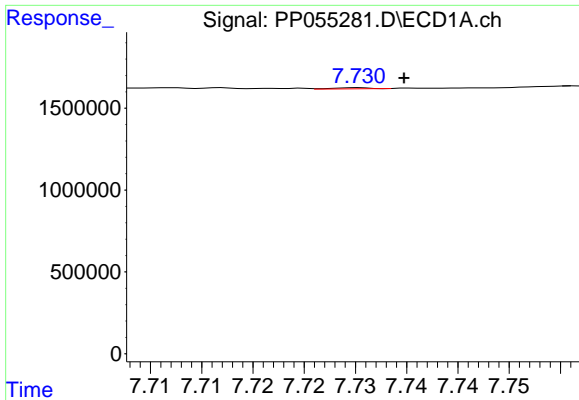
#32 AR-1260-2

R.T.: 7.393 min  
 Delta R.T.: 0.019 min  
 Response: 1837092  
 Conc: 16.32 ng/ml



#32 AR-1260-2

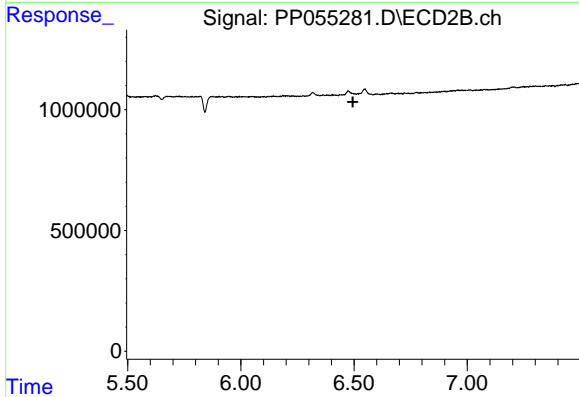
R.T.: 6.363 min  
 Delta R.T.: 0.021 min  
 Response: 60995  
 Conc: 0.68 ng/ml



#33 AR-1260-3

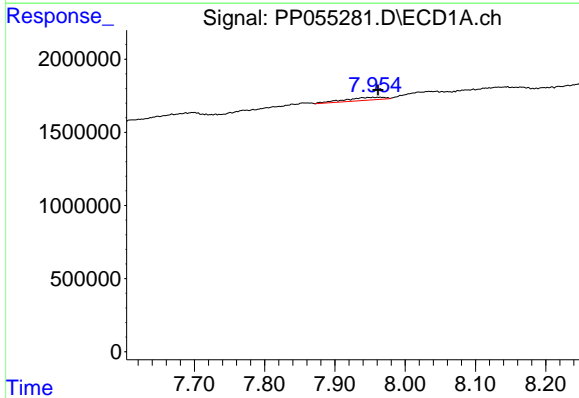
R.T.: 7.730 min  
 Delta R.T.: -0.005 min  
 Response: 16395  
 Conc: 0.20 ng/ml

Instrument :  
 ECD\_P  
 ClientSampleId :



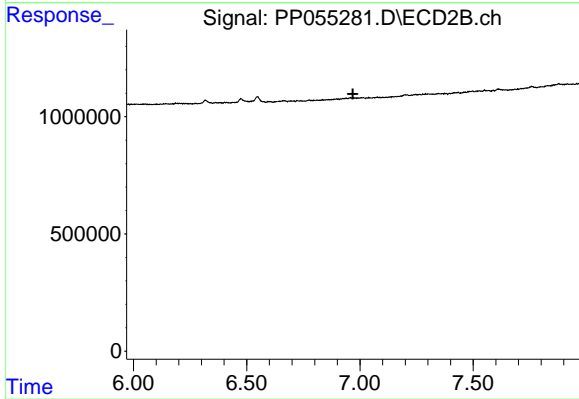
#33 AR-1260-3

R.T.: 0.000 min  
 Exp R.T. : 6.495 min  
 Response: 0  
 Conc: N.D.



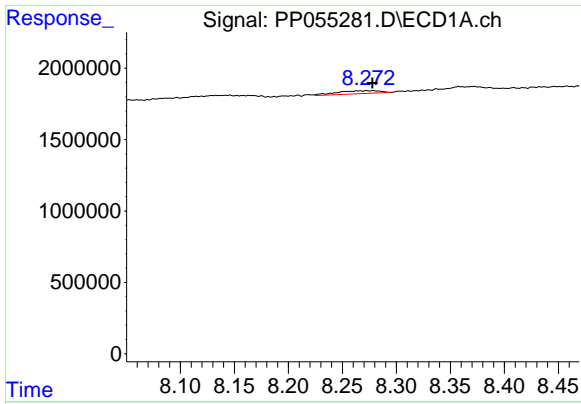
#34 AR-1260-4

R.T.: 7.964 min  
 Delta R.T.: 0.003 min  
 Response: 785661  
 Conc: 8.09 ng/ml



#34 AR-1260-4

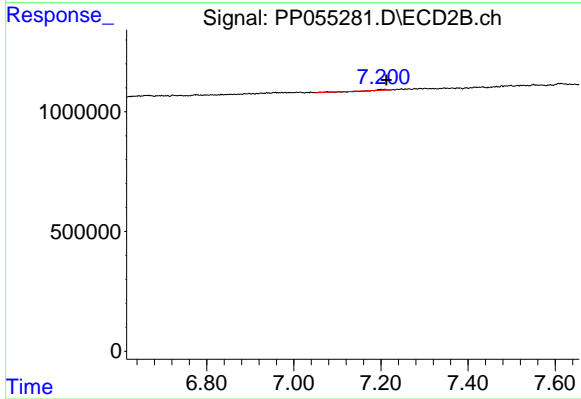
R.T.: 0.000 min  
 Exp R.T. : 6.969 min  
 Response: 0  
 Conc: N.D.



#35 AR-1260-5

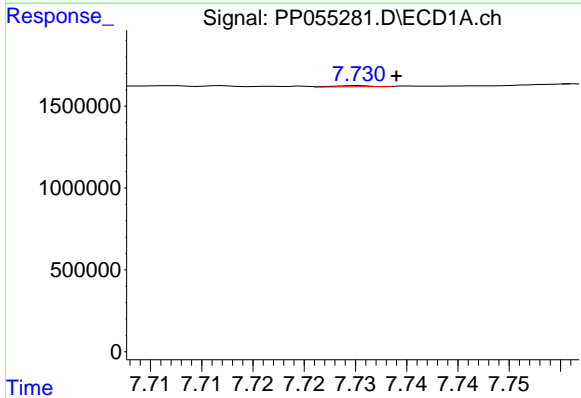
R.T.: 8.278 min  
 Delta R.T.: 0.000 min  
 Response: 564087  
 Conc: 3.17 ng/ml

Instrument :  
 ECD\_P  
 ClientSampleId :



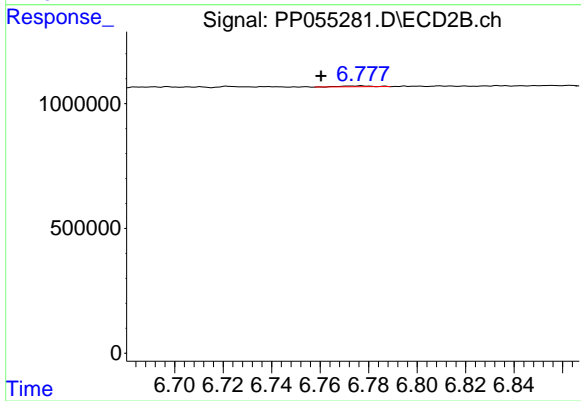
#35 AR-1260-5

R.T.: 7.208 min  
 Delta R.T.: -0.005 min  
 Response: 29140  
 Conc: 0.19 ng/ml



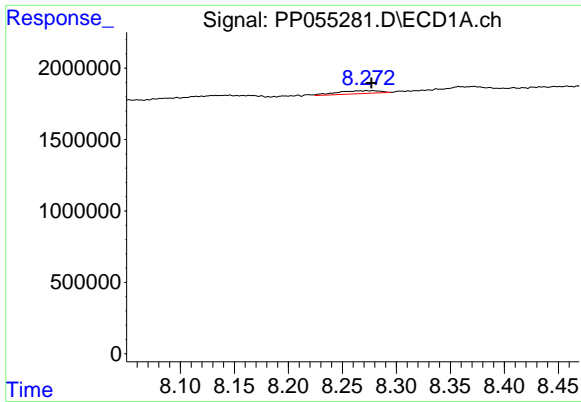
#36 AR-1262-1

R.T.: 7.730 min  
 Delta R.T.: -0.004 min  
 Response: 16395  
 Conc: 0.14 ng/ml



#36 AR-1262-1

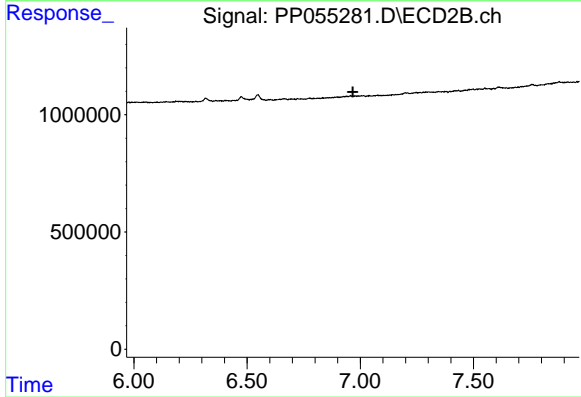
R.T.: 6.776 min  
 Delta R.T.: 0.015 min  
 Response: 27028  
 Conc: 0.63 ng/ml



#37 AR-1262-2

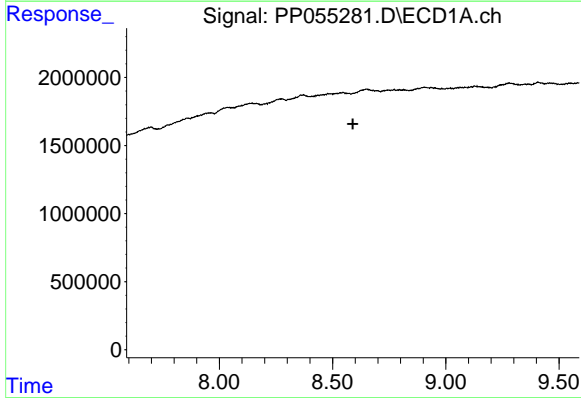
R.T.: 8.278 min  
 Delta R.T.: 0.001 min  
 Response: 564087  
 Conc: 2.80 ng/ml

Instrument :  
 ECD\_P  
 ClientSampleId :



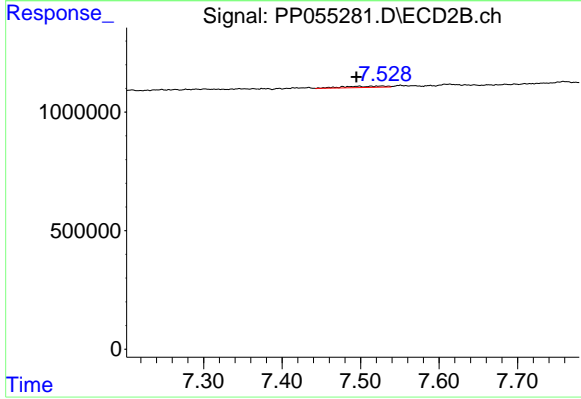
#37 AR-1262-2

R.T.: 0.000 min  
 Exp R.T. : 6.967 min  
 Response: 0  
 Conc: N.D.



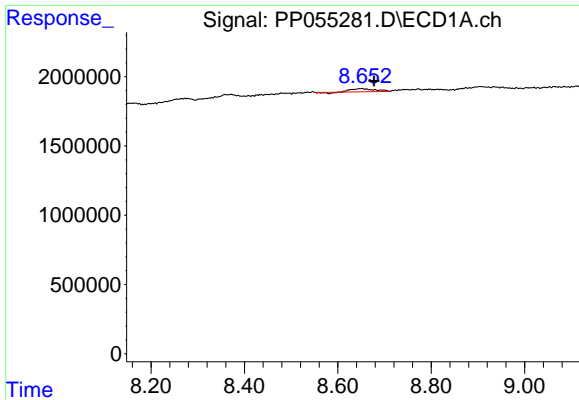
#38 AR-1262-3

R.T.: 0.000 min  
 Exp R.T. : 8.589 min  
 Response: 0  
 Conc: N.D.



#38 AR-1262-3

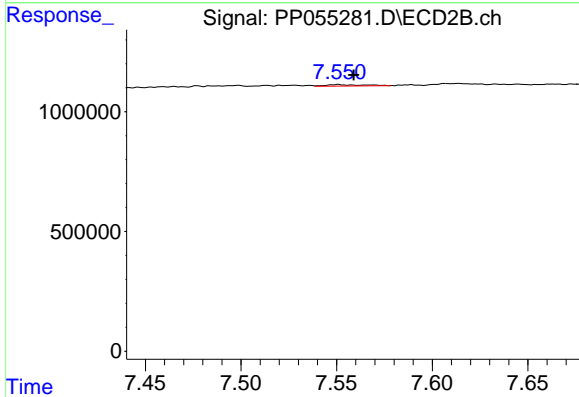
R.T.: 7.497 min  
 Delta R.T.: 0.003 min  
 Response: 193353  
 Conc: 2.65 ng/ml



#39 AR-1262-4

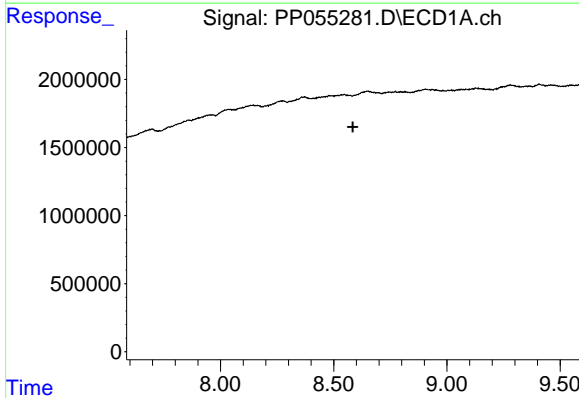
R.T.: 8.650 min  
 Delta R.T.: -0.028 min  
 Response: 744143  
 Conc: 9.68 ng/ml

Instrument :  
 ECD\_P  
 ClientSampleId :



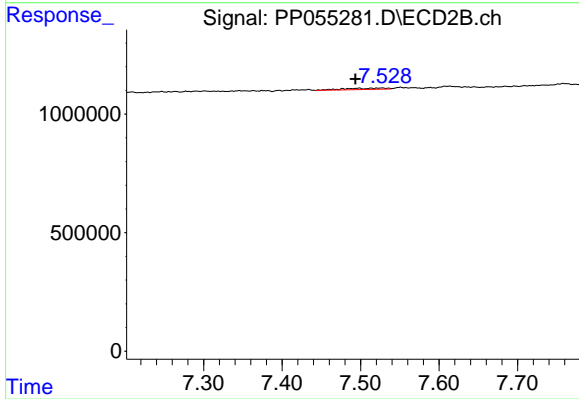
#39 AR-1262-4

R.T.: 7.551 min  
 Delta R.T.: -0.008 min  
 Response: 78466  
 Conc: 0.60 ng/ml



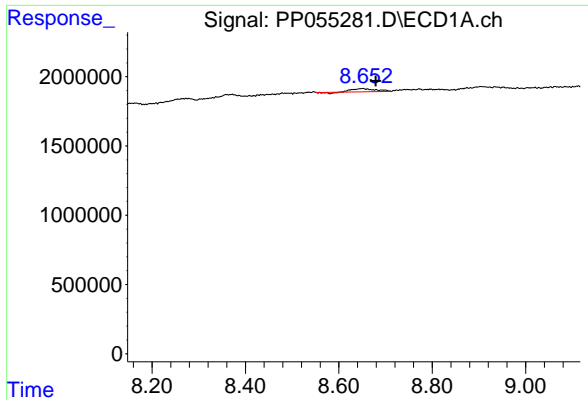
#41 AR-1268-1

R.T.: 0.000 min  
 Exp R.T. : 8.585 min  
 Response: 0  
 Conc: N.D.



#41 AR-1268-1

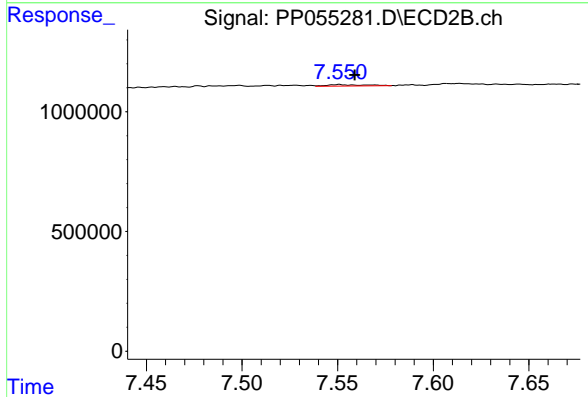
R.T.: 7.497 min  
 Delta R.T.: 0.004 min  
 Response: 193353  
 Conc: 0.89 ng/ml



#42 AR-1268-2

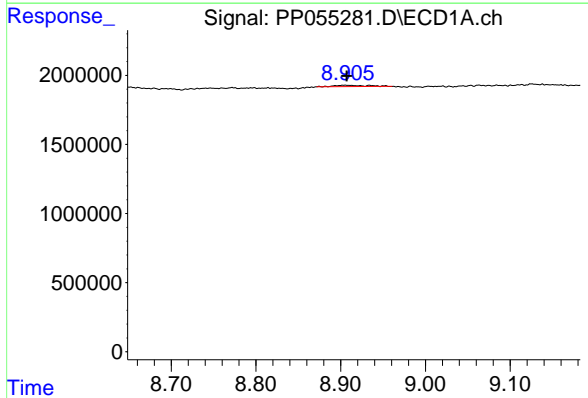
R.T.: 8.650 min  
 Delta R.T.: -0.029 min  
 Response: 744143  
 Conc: 3.28 ng/ml

Instrument :  
 ECD\_P  
 ClientSampleId :



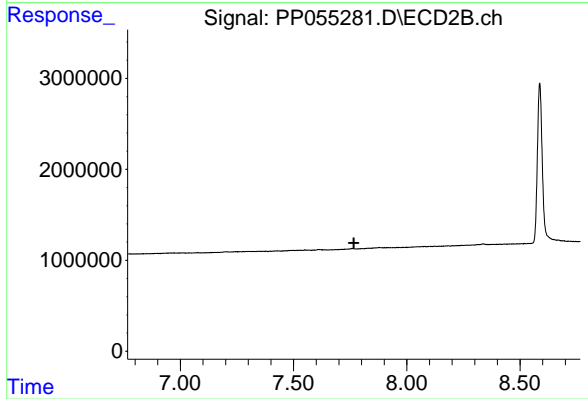
#42 AR-1268-2

R.T.: 7.551 min  
 Delta R.T.: -0.008 min  
 Response: 78466  
 Conc: 0.40 ng/ml



#43 AR-1268-3

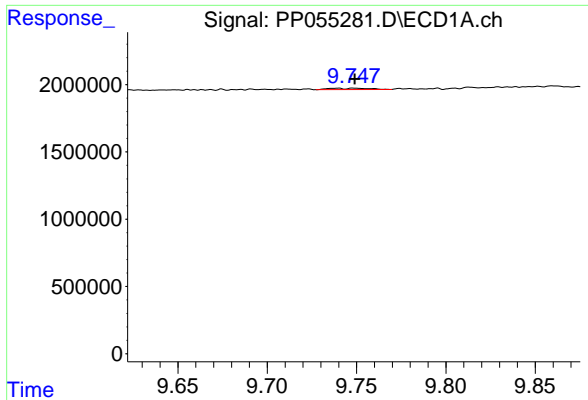
R.T.: 8.905 min  
 Delta R.T.: -0.002 min  
 Response: 269813  
 Conc: 1.35 ng/ml



#43 AR-1268-3

R.T.: 0.000 min  
 Exp R.T. : 7.766 min  
 Response: 0  
 Conc: N.D.

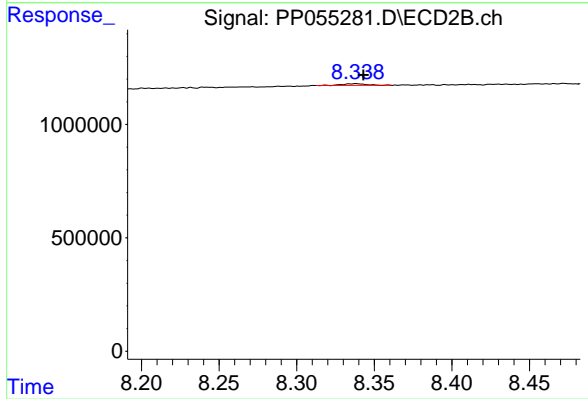




#45 AR-1268-5

R.T.: 9.750 min  
 Delta R.T.: 0.000 min  
 Response: 160106  
 Conc: 0.25 ng/ml

Instrument :  
 ECD\_P  
 ClientSampleId :



#45 AR-1268-5

R.T.: 8.338 min  
 Delta R.T.: -0.005 min  
 Response: 77464  
 Conc: 0.15 ng/ml