

Data Path : Z:\pestpcbsrv\HPCHEM1\ECD\_P\Data\PP020223\  
 Data File : PP055286.D  
 Signal(s) : Signal #1: ECD1A.ch Signal #2: ECD2B.ch  
 Acq On : 02 Feb 2023 22:53  
 Operator : YP\AJ  
 Sample : 01405-01 10X  
 Misc :  
 ALS Vial : 36 Sample Multiplier: 1

Instrument :  
 ECD\_P  
 ClientSampleId :

Integration File signal 1: autoint1.e  
 Integration File signal 2: autoint2.e  
 Quant Time: Feb 03 04:41:16 2023  
 Quant Method : Z:\pestpcbsrv\HPCHEM1\ECD\_P\methods\PP012423.M  
 Quant Title : GC EXTRACTABLES  
 QLast Update : Tue Jan 24 03:37:45 2023  
 Response via : Initial Calibration  
 Integrator: ChemStation

Volume Inj. : 2 µl  
 Signal #1 Phase : ZB-MR2 Signal #2 Phase: ZB-MR2  
 Signal #1 Info : 30Mx0.32mmx 0.50µ Signal #2 Info : 30M x 0.32mm x 0.25µm

Compound	RT#1	RT#2	Resp#1	Resp#2	ng/ml	ng/ml
System Monitoring Compounds						
1) SA Tetrachlo...	4.327	3.574	2492982	2281388	1.434	1.520
2) SA Decachlor...	10.087	8.587	3135119	2379037	1.810	1.762
Target Compounds						
3) L1 AR-1016-1	5.500	4.665	49982	153082	0.744	3.093 #
4) L1 AR-1016-2	5.523	4.665f	36706	153082	0.383	2.212 #
5) L1 AR-1016-3	5.573f	0.000	134597	0	2.250	N.D. #
6) L1 AR-1016-4	5.689	4.906	54287	64909	1.133	2.066 #
7) L1 AR-1016-5	5.980	0.000	56936	0	1.124	N.D. #
8) L2 AR-1221-1	4.540	0.000	57537	0	2.447	N.D. #
9) L2 AR-1221-2	4.617	3.875	90849	166162	5.113	11.210 #
10) L2 AR-1221-3	4.686f	0.000	288601	0	5.363	N.D. #
11) L3 AR-1232-1	4.686f	0.000	288601	0	6.503	N.D. #
12) L3 AR-1232-2	5.233	4.665f	152150	153082	6.728	4.792 #
13) L3 AR-1232-3	5.523	0.000	36706	0	0.836	N.D. #
14) L3 AR-1232-4	5.689	0.000	54287	0	2.453	N.D. #
15) L3 AR-1232-5	5.778	0.000	32377	0	1.849	N.D. #
16) L4 AR-1242-1	5.500	4.665	49982	153082	0.893	3.737 #
17) L4 AR-1242-2	5.523	4.665f	36706	153082	0.460	2.681 #
18) L4 AR-1242-3	5.573f	0.000	134597	0	2.710	N.D. #
19) L4 AR-1242-4	5.689	0.000	54287	0	1.355	N.D. #
20) L4 AR-1242-5	6.429	0.000	53394	0	1.201	N.D. #
21) L5 AR-1248-1	5.500	4.665	49982	153082	1.198	4.938 #
22) L5 AR-1248-2	5.778	4.906	32377	64909	0.509	1.419 #
23) L5 AR-1248-3	5.980	0.000	56936	0	0.823	N.D. #
24) L5 AR-1248-4	6.416f	0.000	368494	0	4.859	N.D. #
25) L5 AR-1248-5	6.429	0.000	53394	0	0.724	N.D. #
27) L6 AR-1254-2	6.577	0.000	68127	0	0.563	N.D. #
28) L6 AR-1254-3	0.000	6.008	0	126064	N.D.	1.132 #
30) L6 AR-1254-5	7.680f	0.000	711323	0	7.032	N.D. #
31) L7 AR-1260-1	7.116	6.146	48112	161249	0.505	2.079 #
32) L7 AR-1260-2	7.378	6.331	141116	126520	1.254	1.407
33) L7 AR-1260-3	7.734	0.000	12269	0	0.152	N.D. #
34) L7 AR-1260-4	7.953	0.000	767095	0	7.902	N.D. #
35) L7 AR-1260-5	8.269	7.207	679976	84362	3.823	0.549 #
36) L8 AR-1262-1	7.734	0.000	12269	0	0.104	N.D. #
37) L8 AR-1262-2	8.269	0.000	679976	0	3.376	N.D. #
38) L8 AR-1262-3	0.000	7.479f	0	118961	N.D.	1.633 #
39) L8 AR-1262-4	8.676	7.552	129869	146337	1.689	1.119 #
40) L8 AR-1262-5	9.355f	0.000	30380	0	0.425	N.D. #
41) L9 AR-1268-1	0.000	7.479	0	118961	N.D.	0.550 #
42) L9 AR-1268-2	8.676	7.552	129869	146337	0.572	0.750 #
43) L9 AR-1268-3	8.905	0.000	77335	0	0.387	N.D. #

Data Path : Z:\pestpcbsrv\HPCHEM1\ECD\_P\Data\PP020223\  
 Data File : PP055286.D  
 Signal(s) : Signal #1: ECD1A.ch Signal #2: ECD2B.ch  
 Acq On : 02 Feb 2023 22:53  
 Operator : YP\AJ  
 Sample : 01405-01 10X  
 Misc :  
 ALS Vial : 36 Sample Multiplier: 1

Instrument :  
 ECD\_P  
 ClientSampleId :

Integration File signal 1: autoint1.e  
 Integration File signal 2: autoint2.e  
 Quant Time: Feb 03 04:41:16 2023  
 Quant Method : Z:\pestpcbsrv\HPCHEM1\ECD\_P\methods\PP012423.M  
 Quant Title : GC EXTRACTABLES  
 QLast Update : Tue Jan 24 03:37:45 2023  
 Response via : Initial Calibration  
 Integrator: ChemStation

Volume Inj. : 2 µl  
 Signal #1 Phase : ZB-MR1 Signal #2 Phase: ZB-MR2  
 Signal #1 Info : 30Mx0.32mmx 0.50µ Signal #2 Info : 30M x 0.32mm x 0.25µm

	Compound	RT#1	RT#2	Resp#1	Resp#2	ng/ml	ng/ml
44)	L9 AR-1268-4	9.355f	0.000	30380	0	0.387	N.D. #
45)	L9 AR-1268-5	9.740	8.343	107446	63218	0.169	0.120 #

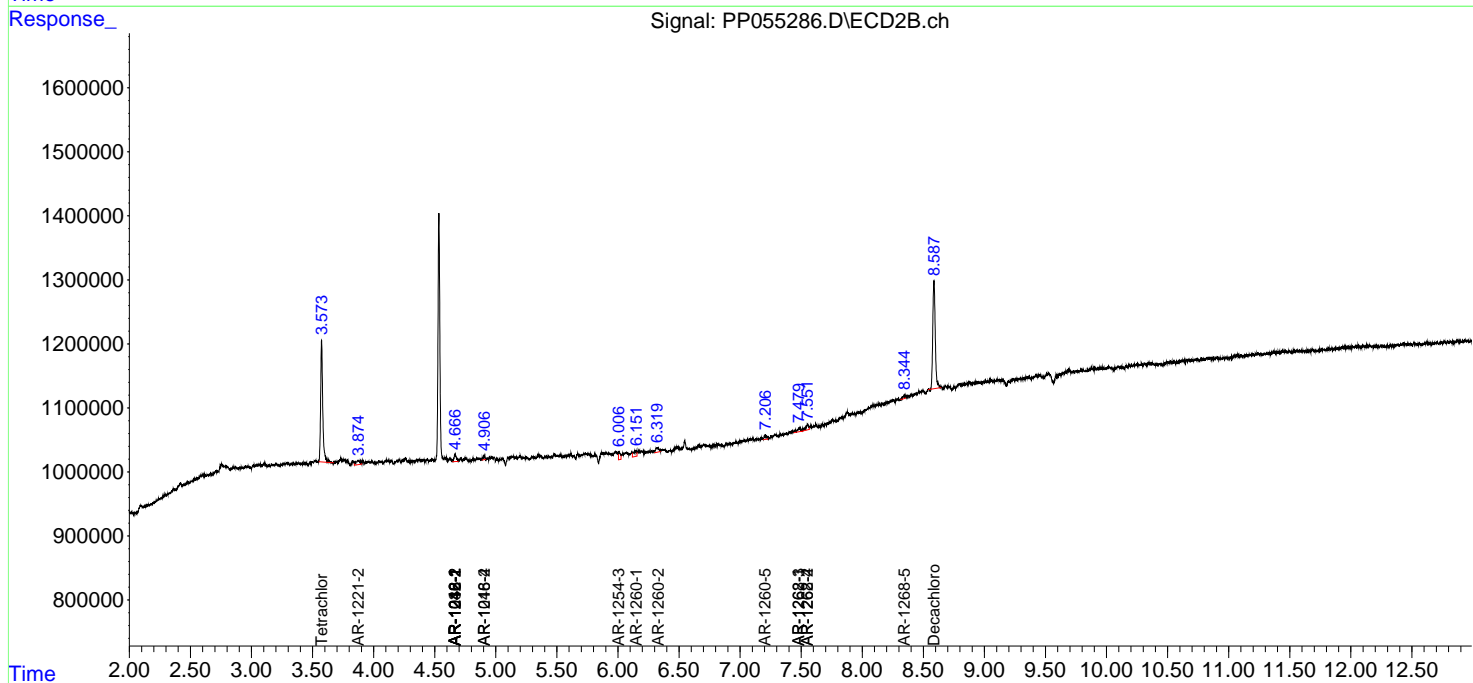
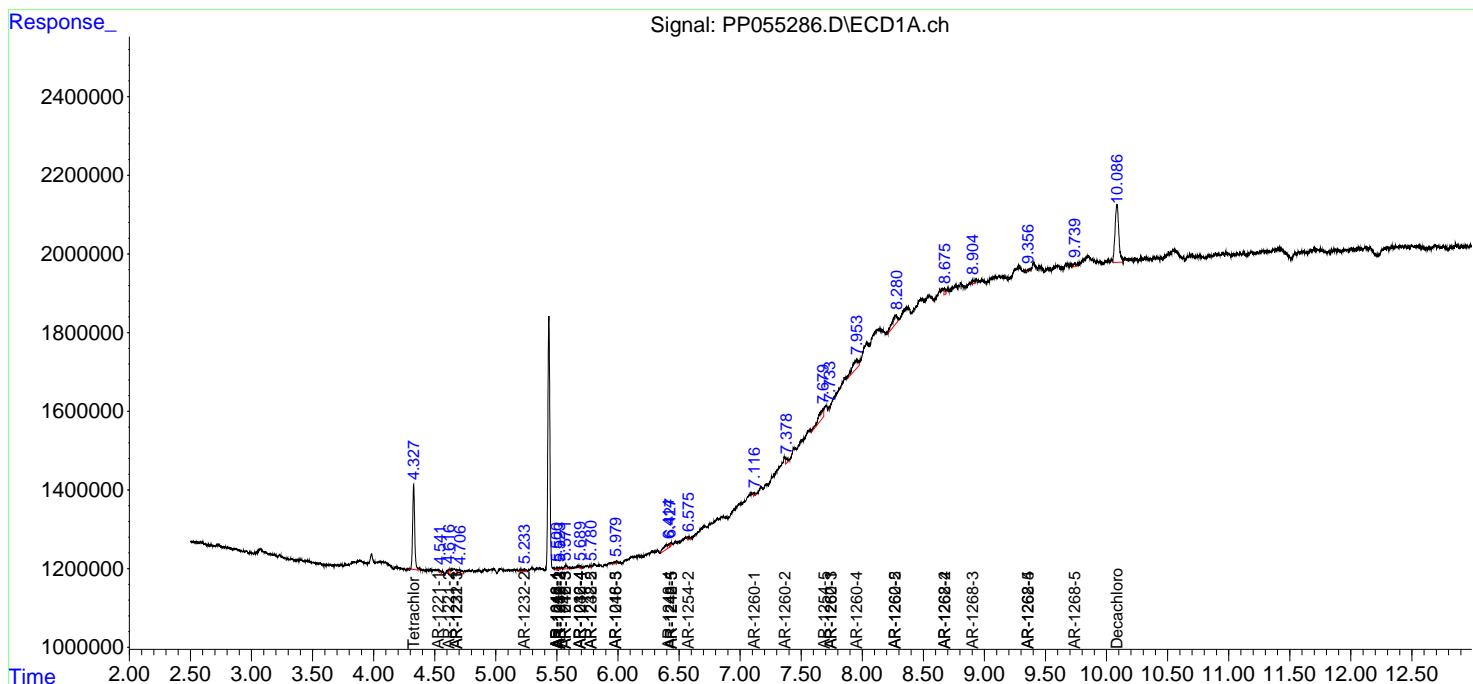
(f)=RT Delta > 1/2 Window (#)=Amounts differ by > 25% (m)=manual int.

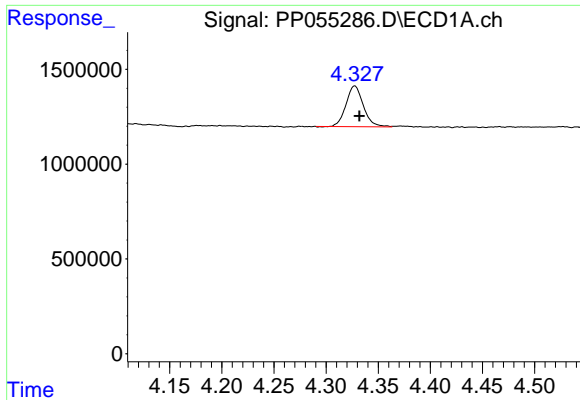
Data Path : Z:\pestpcbsrv\HPCHEM1\ECD\_P\Data\PP020223\  
 Data File : PP055286.D  
 Signal(s) : Signal #1: ECD1A.ch Signal #2: ECD2B.ch  
 Acq On : 02 Feb 2023 22:53  
 Operator : YP\AJ  
 Sample : 01405-01 10X  
 Misc :  
 ALS Vial : 36 Sample Multiplier: 1

Instrument :  
 ECD\_P  
 ClientSampleId :

Integration File signal 1: autoint1.e  
 Integration File signal 2: autoint2.e  
 Quant Time: Feb 03 04:41:16 2023  
 Quant Method : Z:\pestpcbsrv\HPCHEM1\ECD\_P\methods\PP012423.M  
 Quant Title : GC EXTRACTABLES  
 QLast Update : Tue Jan 24 03:37:45 2023  
 Response via : Initial Calibration  
 Integrator: ChemStation

Volume Inj. : 2 µl  
 Signal #1 Phase : ZB-MR1 Signal #2 Phase: ZB-MR2  
 Signal #1 Info : 30Mx0.32mmx 0.50µ Signal #2 Info : 30M x 0.32mm x 0.25µm

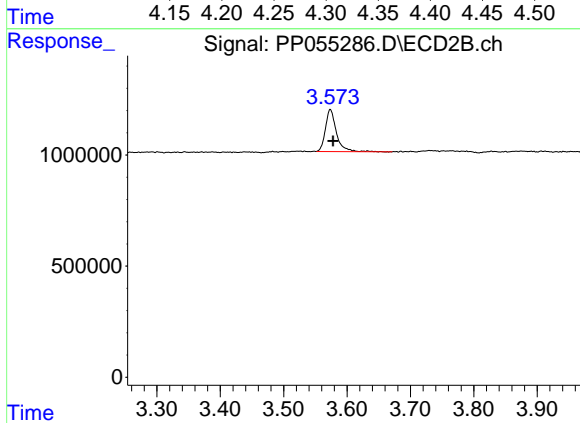




#1 Tetrachloro-m-xylene

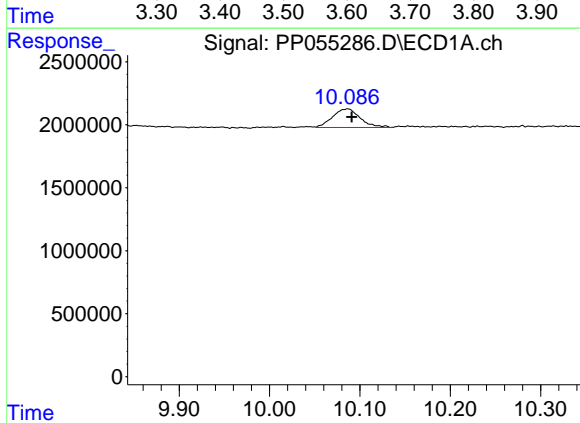
R.T.: 4.327 min  
 Delta R.T.: -0.005 min  
 Response: 2492982  
 Conc: 1.43 ng/ml

Instrument :  
 ECD\_P  
 ClientSampleId :



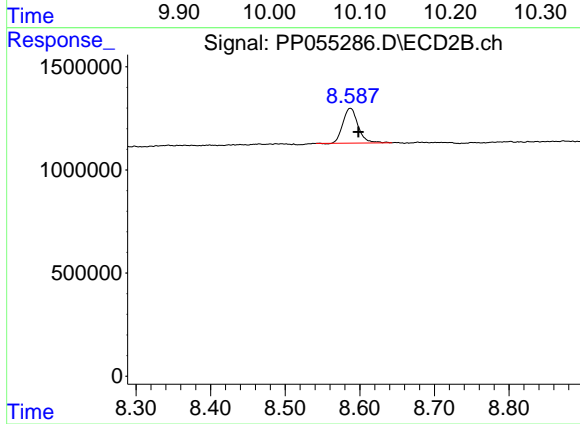
#1 Tetrachloro-m-xylene

R.T.: 3.574 min  
 Delta R.T.: -0.005 min  
 Response: 2281388  
 Conc: 1.52 ng/ml



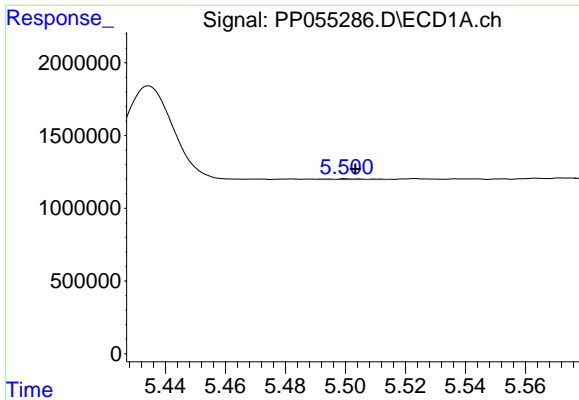
#2 Decachlorobiphenyl

R.T.: 10.087 min  
 Delta R.T.: -0.004 min  
 Response: 3135119  
 Conc: 1.81 ng/ml



#2 Decachlorobiphenyl

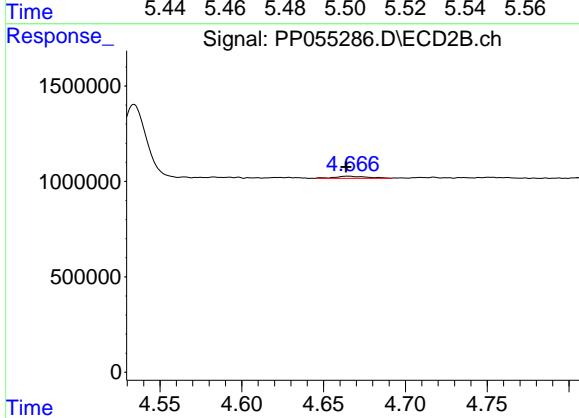
R.T.: 8.587 min  
 Delta R.T.: -0.011 min  
 Response: 2379037  
 Conc: 1.76 ng/ml



#3 AR-1016-1

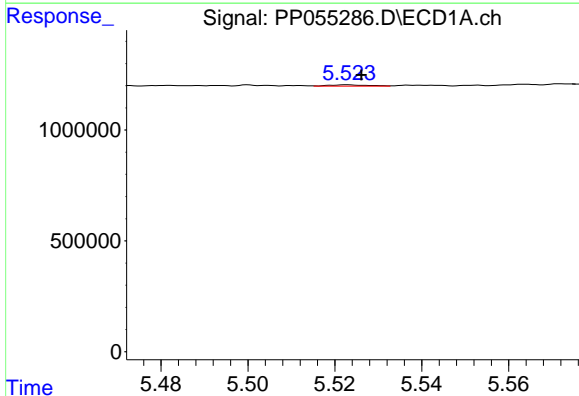
R.T.: 5.500 min  
 Delta R.T.: -0.003 min  
 Response: 49982  
 Conc: 0.74 ng/ml

Instrument :  
 ECD\_P  
 ClientSampleId :



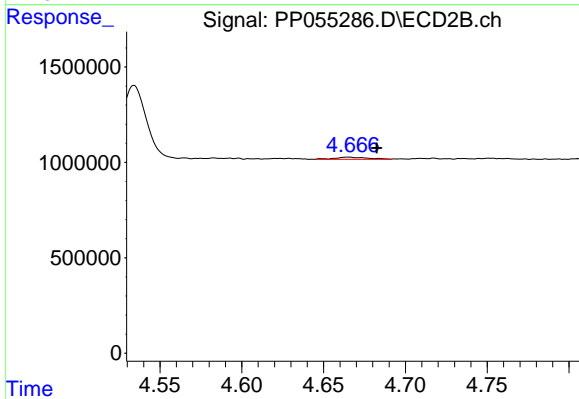
#3 AR-1016-1

R.T.: 4.665 min  
 Delta R.T.: 0.001 min  
 Response: 153082  
 Conc: 3.09 ng/ml



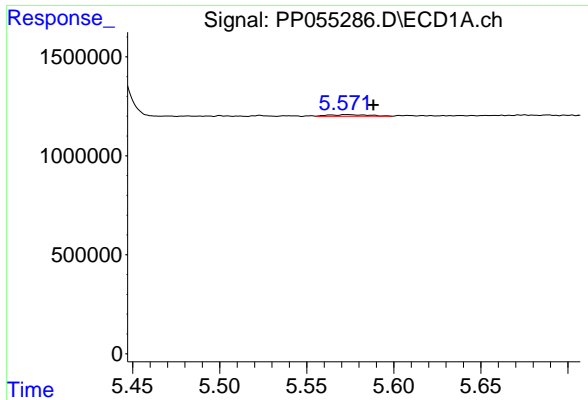
#4 AR-1016-2

R.T.: 5.523 min  
 Delta R.T.: -0.003 min  
 Response: 36706  
 Conc: 0.38 ng/ml



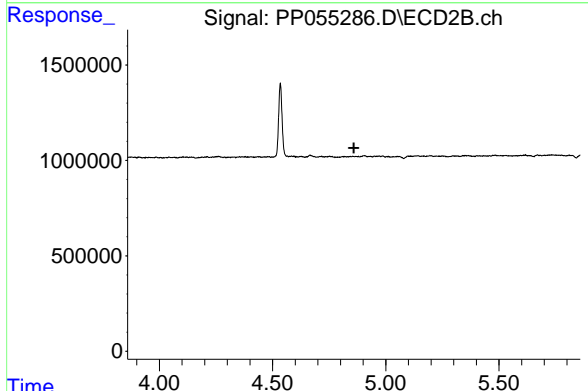
#4 AR-1016-2

R.T.: 4.665 min  
 Delta R.T.: -0.017 min  
 Response: 153082  
 Conc: 2.21 ng/ml

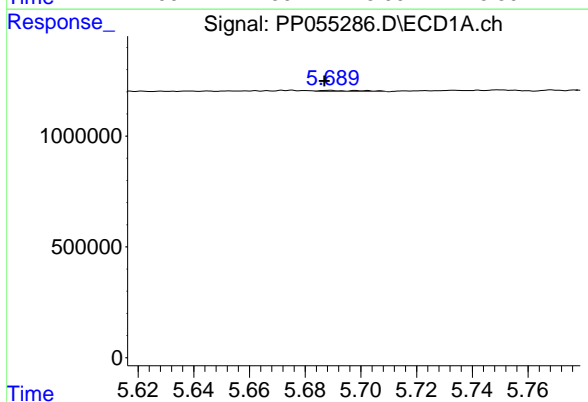


#5 AR-1016-3  
 R.T.: 5.573 min  
 Delta R.T.: -0.015 min  
 Response: 134597  
 Conc: 2.25 ng/ml

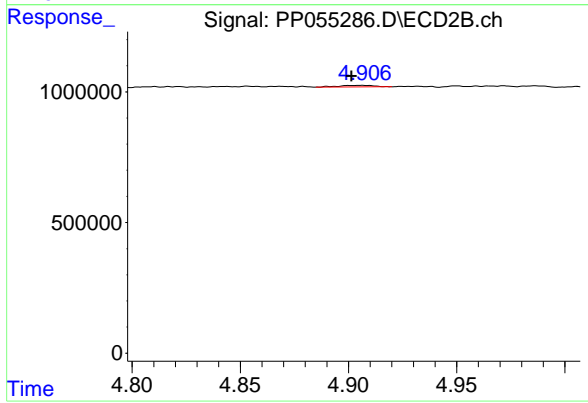
Instrument :  
 ECD\_P  
 ClientSampleId :



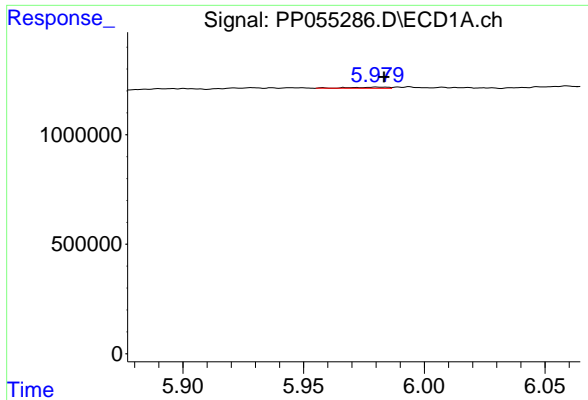
#5 AR-1016-3  
 R.T.: 0.000 min  
 Exp R.T. : 4.859 min  
 Response: 0  
 Conc: N.D.



#6 AR-1016-4  
 R.T.: 5.689 min  
 Delta R.T.: 0.002 min  
 Response: 54287  
 Conc: 1.13 ng/ml



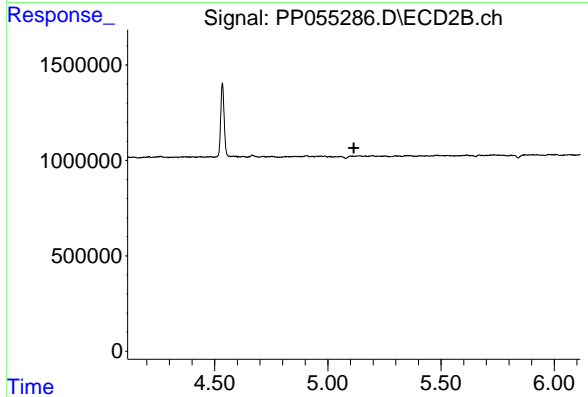
#6 AR-1016-4  
 R.T.: 4.906 min  
 Delta R.T.: 0.005 min  
 Response: 64909  
 Conc: 2.07 ng/ml



#7 AR-1016-5

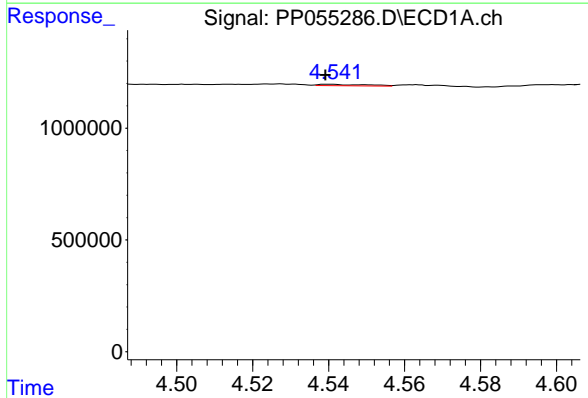
R.T.: 5.980 min  
 Delta R.T.: -0.003 min  
 Response: 56936  
 Conc: 1.12 ng/ml

Instrument :  
 ECD\_P  
 ClientSampleId :



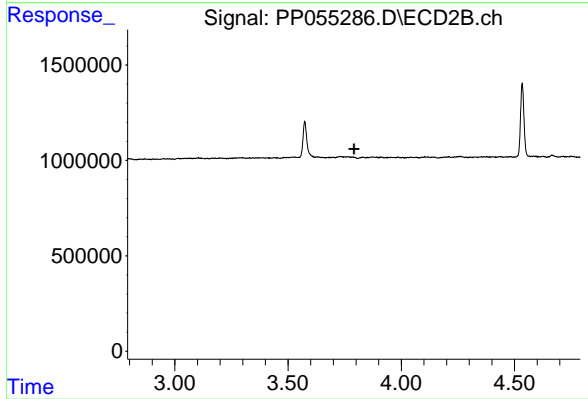
#7 AR-1016-5

R.T.: 0.000 min  
 Exp R.T. : 5.115 min  
 Response: 0  
 Conc: N.D.



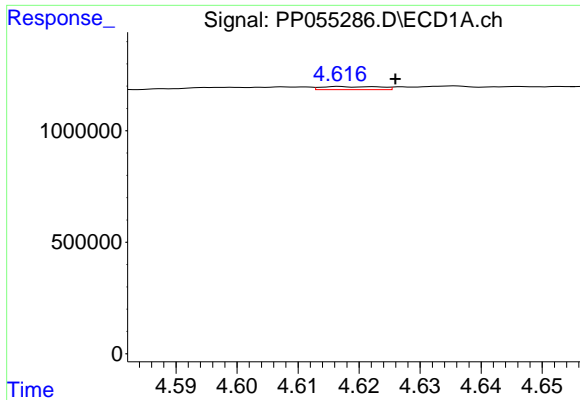
#8 AR-1221-1

R.T.: 4.540 min  
 Delta R.T.: 0.001 min  
 Response: 57537  
 Conc: 2.45 ng/ml



#8 AR-1221-1

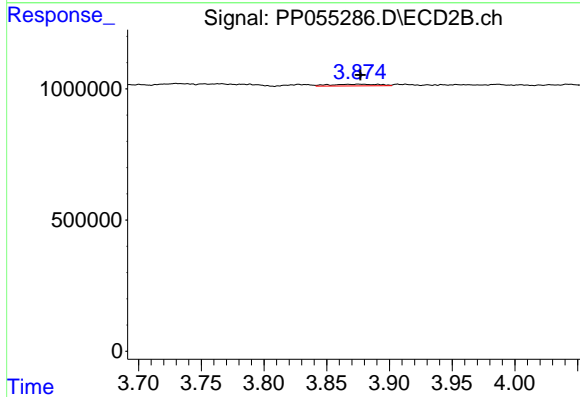
R.T.: 0.000 min  
 Exp R.T. : 3.791 min  
 Response: 0  
 Conc: N.D.



#9 AR-1221-2

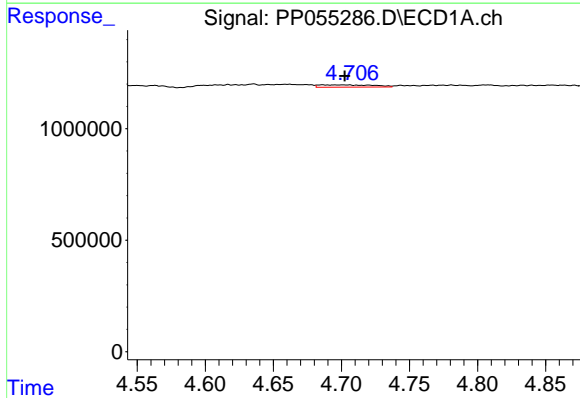
R.T.: 4.617 min  
 Delta R.T.: -0.009 min  
 Response: 90849  
 Conc: 5.11 ng/ml

Instrument :  
 ECD\_P  
 ClientSampleId :



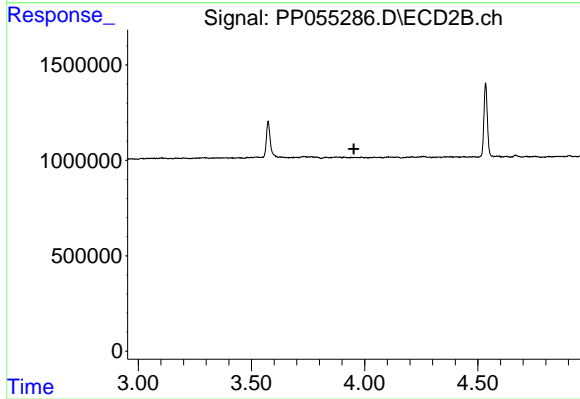
#9 AR-1221-2

R.T.: 3.875 min  
 Delta R.T.: -0.001 min  
 Response: 166162  
 Conc: 11.21 ng/ml



#10 AR-1221-3

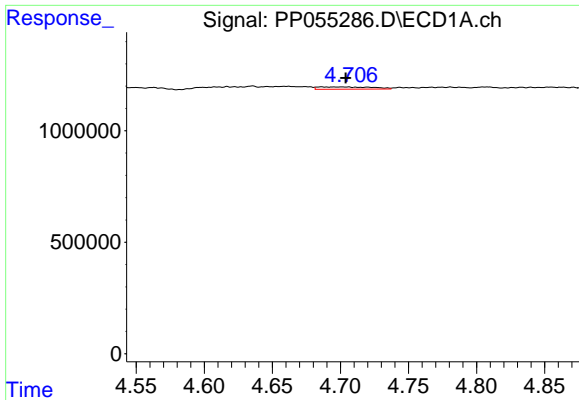
R.T.: 4.686 min  
 Delta R.T.: -0.017 min  
 Response: 288601  
 Conc: 5.36 ng/ml



#10 AR-1221-3

R.T.: 0.000 min  
 Exp R.T. : 3.952 min  
 Response: 0  
 Conc: N.D.

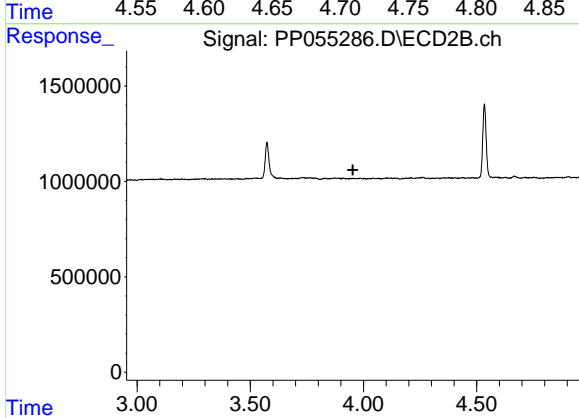




#11 AR-1232-1

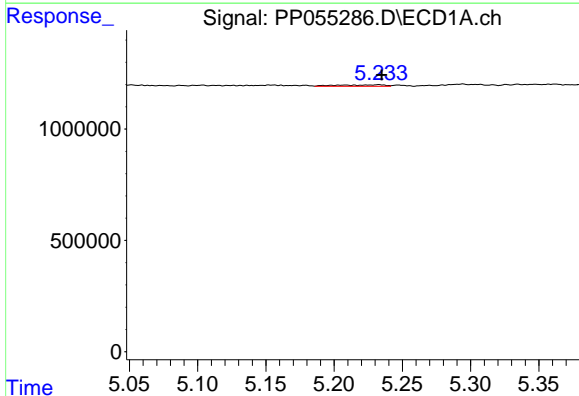
R.T.: 4.686 min  
 Delta R.T.: -0.018 min  
 Response: 288601  
 Conc: 6.50 ng/ml

Instrument :  
 ECD\_P  
 ClientSampleId :



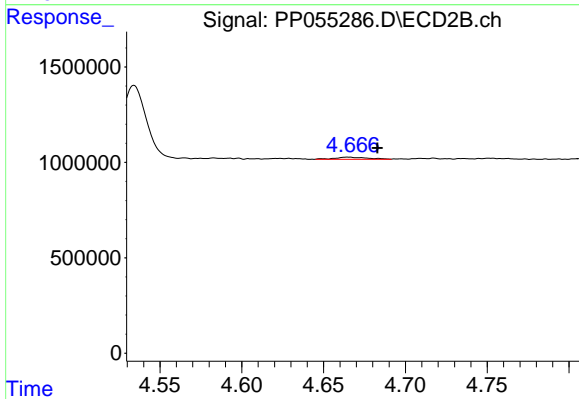
#11 AR-1232-1

R.T.: 0.000 min  
 Exp R.T. : 3.953 min  
 Response: 0  
 Conc: N.D.



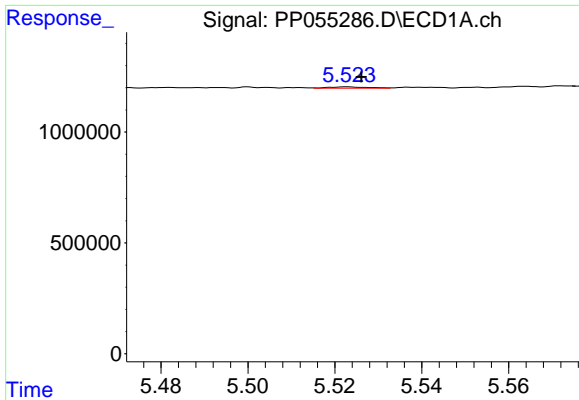
#12 AR-1232-2

R.T.: 5.233 min  
 Delta R.T.: -0.002 min  
 Response: 152150  
 Conc: 6.73 ng/ml



#12 AR-1232-2

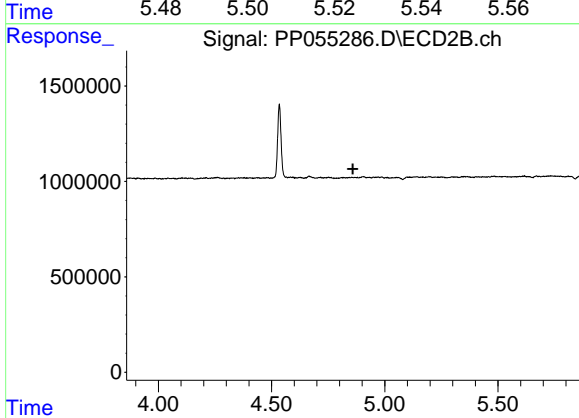
R.T.: 4.665 min  
 Delta R.T.: -0.018 min  
 Response: 153082  
 Conc: 4.79 ng/ml



#13 AR-1232-3

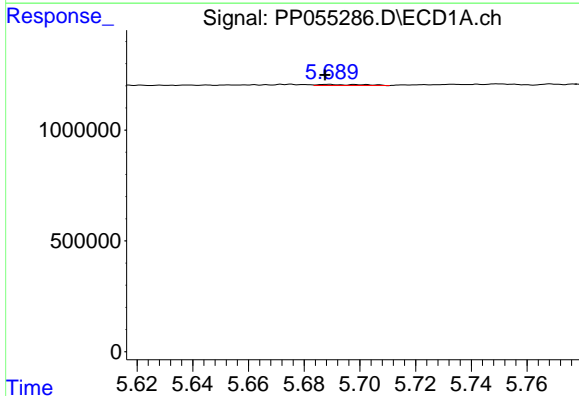
R.T.: 5.523 min  
 Delta R.T.: -0.003 min  
 Response: 36706  
 Conc: 0.84 ng/ml

Instrument :  
 ECD\_P  
 ClientSampleId :



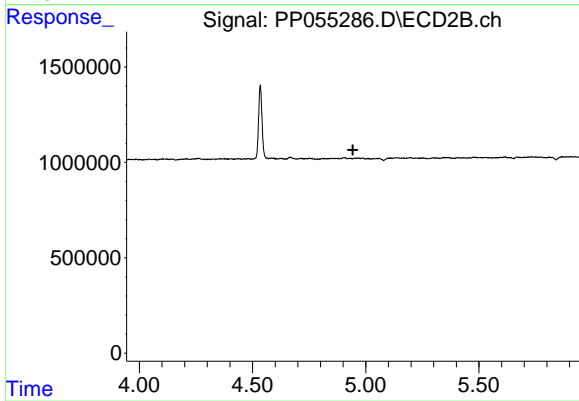
#13 AR-1232-3

R.T.: 0.000 min  
 Exp R.T. : 4.859 min  
 Response: 0  
 Conc: N.D.



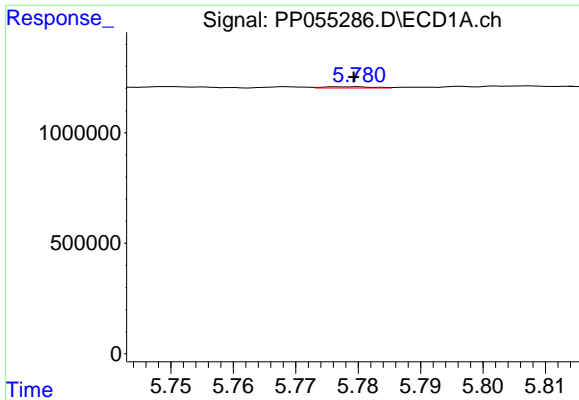
#14 AR-1232-4

R.T.: 5.689 min  
 Delta R.T.: 0.001 min  
 Response: 54287  
 Conc: 2.45 ng/ml



#14 AR-1232-4

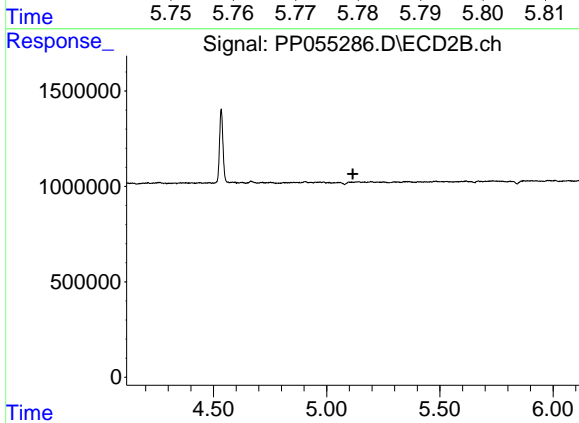
R.T.: 0.000 min  
 Exp R.T. : 4.944 min  
 Response: 0  
 Conc: N.D.



#15 AR-1232-5

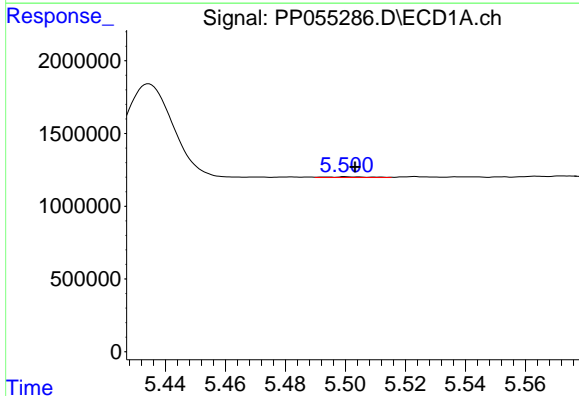
R.T.: 5.778 min  
 Delta R.T.: -0.001 min  
 Response: 32377  
 Conc: 1.85 ng/ml

Instrument :  
 ECD\_P  
 ClientSampleId :



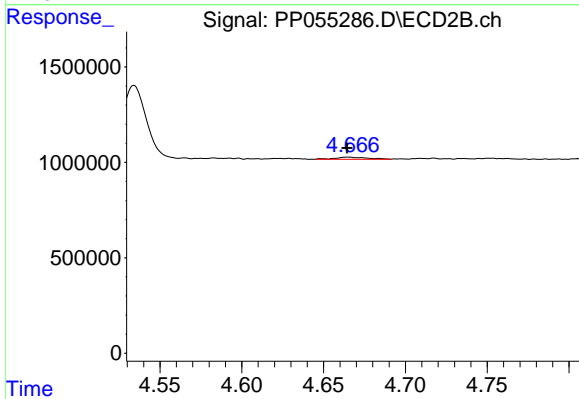
#15 AR-1232-5

R.T.: 0.000 min  
 Exp R.T. : 5.115 min  
 Response: 0  
 Conc: N.D.



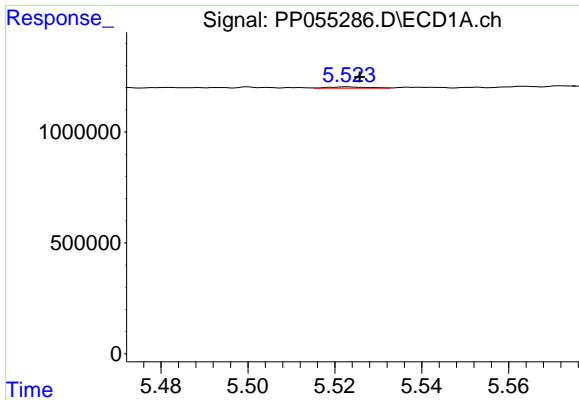
#16 AR-1242-1

R.T.: 5.500 min  
 Delta R.T.: -0.003 min  
 Response: 49982  
 Conc: 0.89 ng/ml



#16 AR-1242-1

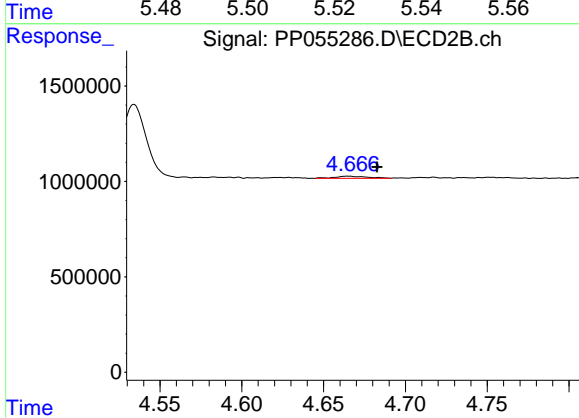
R.T.: 4.665 min  
 Delta R.T.: 0.000 min  
 Response: 153082  
 Conc: 3.74 ng/ml



#17 AR-1242-2

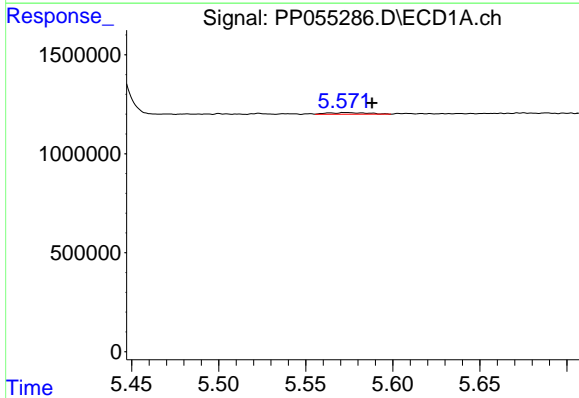
R.T.: 5.523 min  
 Delta R.T.: -0.003 min  
 Response: 36706  
 Conc: 0.46 ng/ml

Instrument :  
 ECD\_P  
 ClientSampleId :



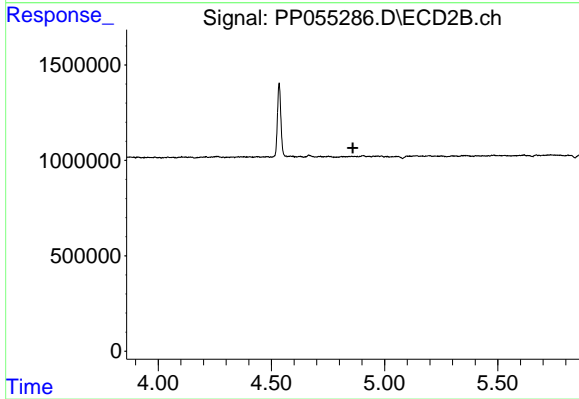
#17 AR-1242-2

R.T.: 4.665 min  
 Delta R.T.: -0.018 min  
 Response: 153082  
 Conc: 2.68 ng/ml



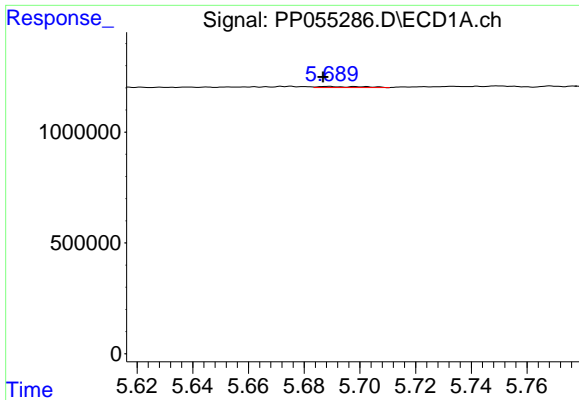
#18 AR-1242-3

R.T.: 5.573 min  
 Delta R.T.: -0.015 min  
 Response: 134597  
 Conc: 2.71 ng/ml



#18 AR-1242-3

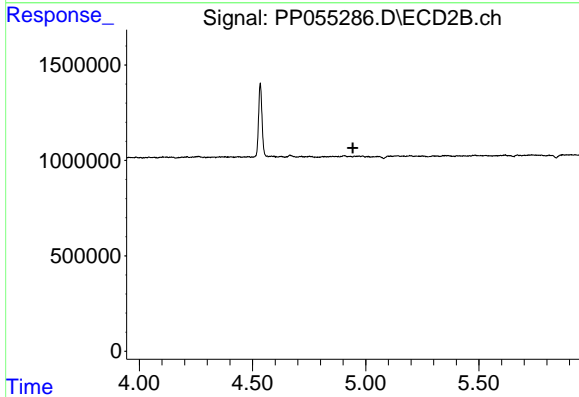
R.T.: 0.000 min  
 Exp R.T. : 4.860 min  
 Response: 0  
 Conc: N.D.



#19 AR-1242-4

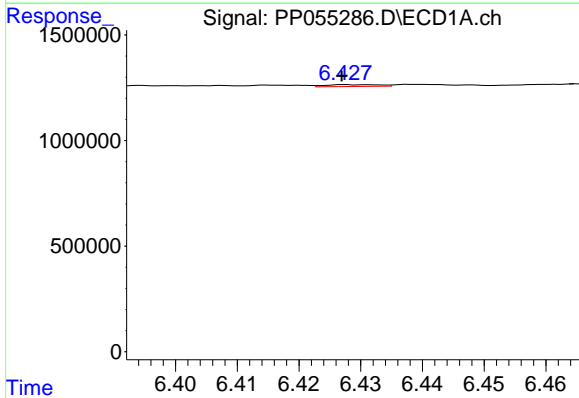
R.T.: 5.689 min  
 Delta R.T.: 0.002 min  
 Response: 54287  
 Conc: 1.35 ng/ml

Instrument :  
 ECD\_P  
 ClientSampleId :



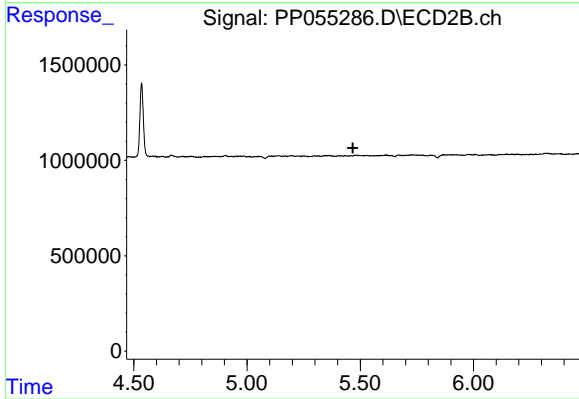
#19 AR-1242-4

R.T.: 0.000 min  
 Exp R.T. : 4.943 min  
 Response: 0  
 Conc: N.D.



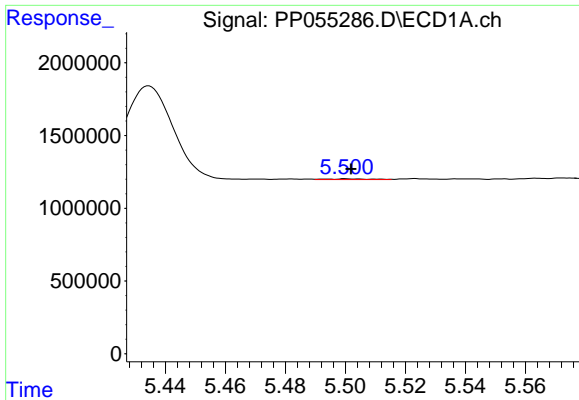
#20 AR-1242-5

R.T.: 6.429 min  
 Delta R.T.: 0.002 min  
 Response: 53394  
 Conc: 1.20 ng/ml



#20 AR-1242-5

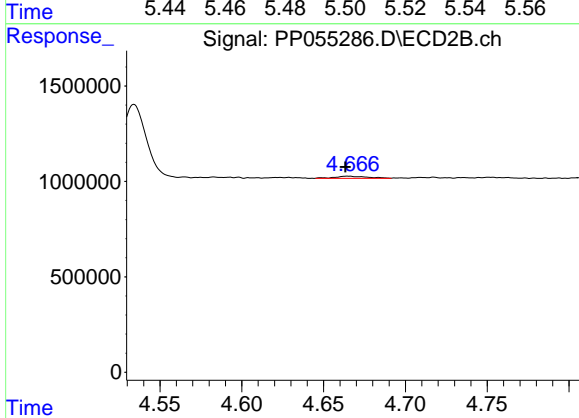
R.T.: 0.000 min  
 Exp R.T. : 5.468 min  
 Response: 0  
 Conc: N.D.



#21 AR-1248-1

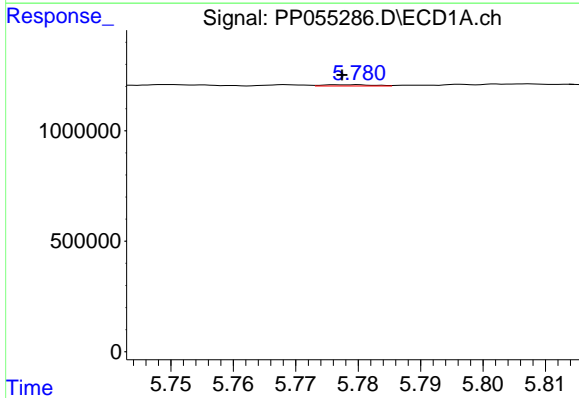
R.T.: 5.500 min  
 Delta R.T.: -0.002 min  
 Response: 49982  
 Conc: 1.20 ng/ml

Instrument :  
 ECD\_P  
 ClientSampleId :



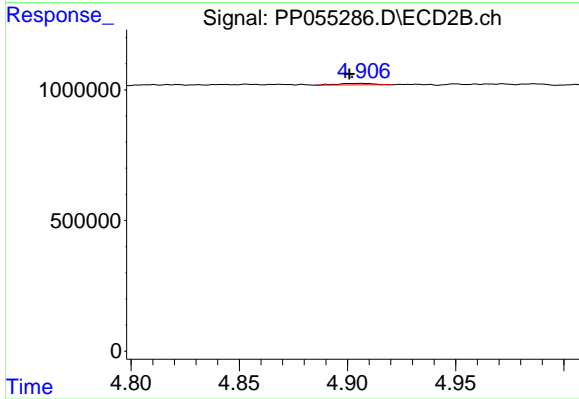
#21 AR-1248-1

R.T.: 4.665 min  
 Delta R.T.: 0.002 min  
 Response: 153082  
 Conc: 4.94 ng/ml



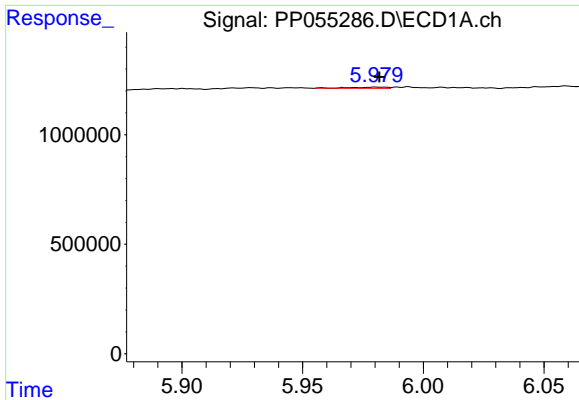
#22 AR-1248-2

R.T.: 5.778 min  
 Delta R.T.: 0.000 min  
 Response: 32377  
 Conc: 0.51 ng/ml



#22 AR-1248-2

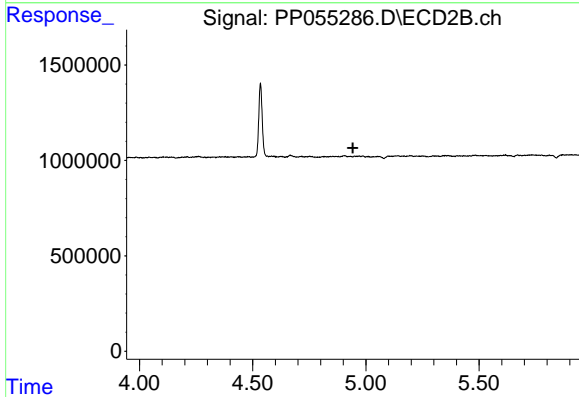
R.T.: 4.906 min  
 Delta R.T.: 0.006 min  
 Response: 64909  
 Conc: 1.42 ng/ml



#23 AR-1248-3

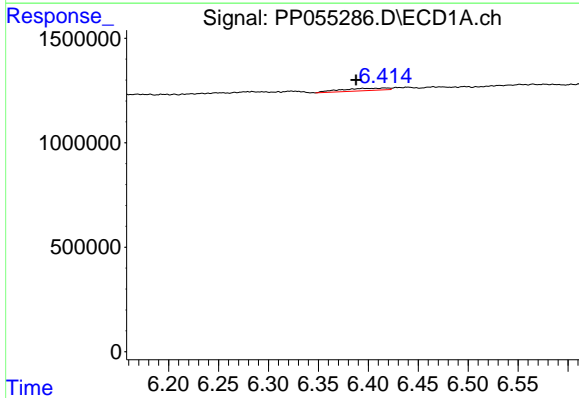
R.T.: 5.980 min  
 Delta R.T.: -0.001 min  
 Response: 56936  
 Conc: 0.82 ng/ml

Instrument :  
 ECD\_P  
 ClientSampleId :



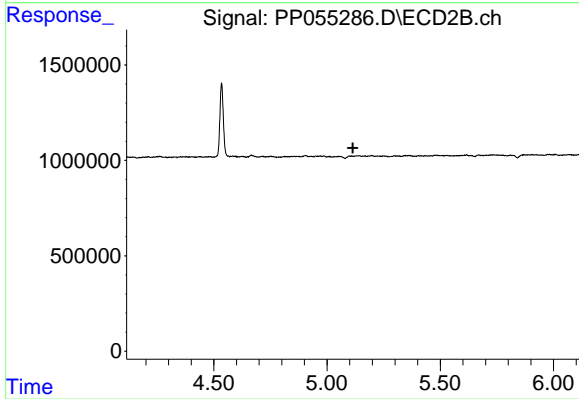
#23 AR-1248-3

R.T.: 0.000 min  
 Exp R.T. : 4.942 min  
 Response: 0  
 Conc: N.D.



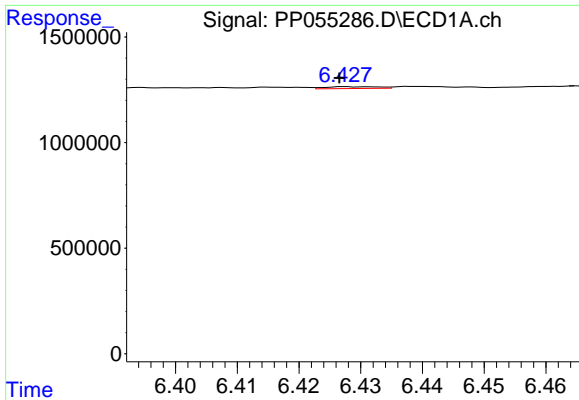
#24 AR-1248-4

R.T.: 6.416 min  
 Delta R.T.: 0.028 min  
 Response: 368494  
 Conc: 4.86 ng/ml



#24 AR-1248-4

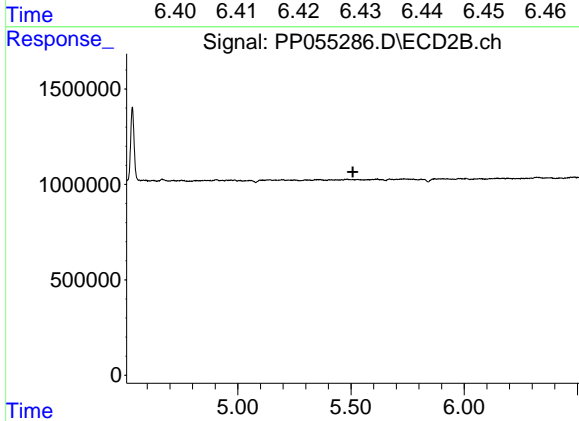
R.T.: 0.000 min  
 Exp R.T. : 5.114 min  
 Response: 0  
 Conc: N.D.



#25 AR-1248-5

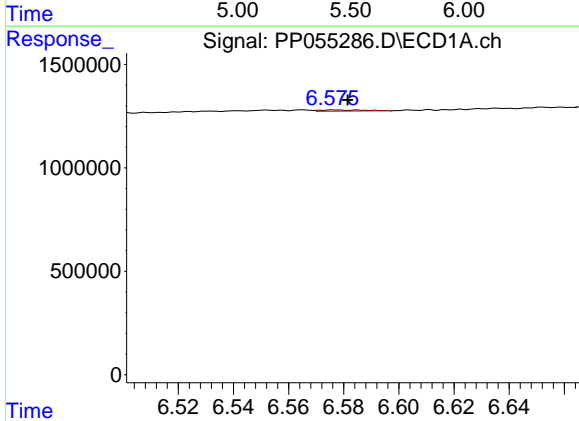
R.T.: 6.429 min  
 Delta R.T.: 0.002 min  
 Response: 53394  
 Conc: 0.72 ng/ml

Instrument :  
 ECD\_P  
 ClientSampleId :



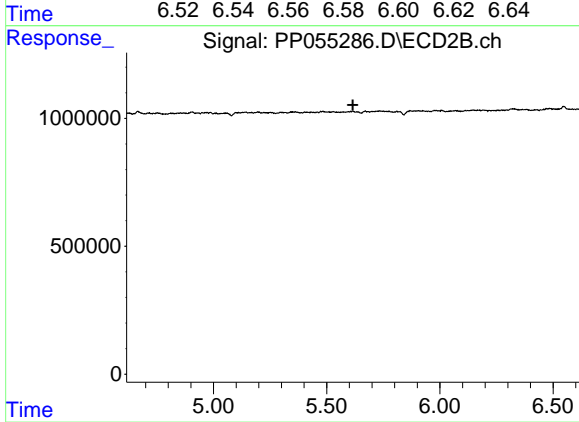
#25 AR-1248-5

R.T.: 0.000 min  
 Exp R.T. : 5.508 min  
 Response: 0  
 Conc: N.D.



#27 AR-1254-2

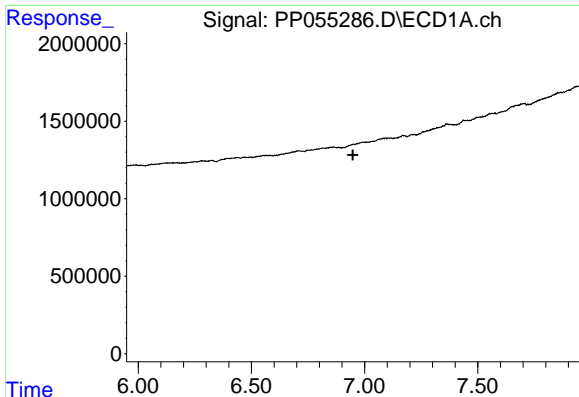
R.T.: 6.577 min  
 Delta R.T.: -0.005 min  
 Response: 68127  
 Conc: 0.56 ng/ml



#27 AR-1254-2

R.T.: 0.000 min  
 Exp R.T. : 5.616 min  
 Response: 0  
 Conc: N.D.

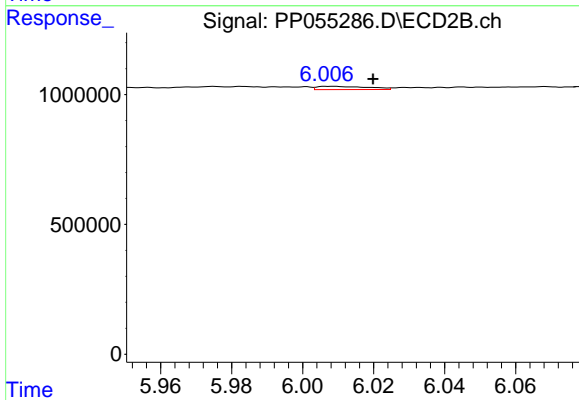




#28 AR-1254-3

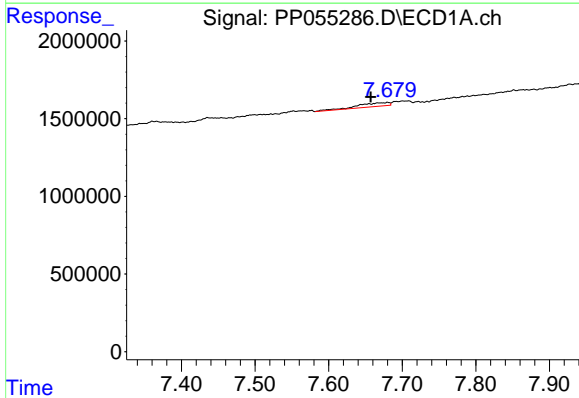
R.T.: 0.000 min  
 Exp R.T.: 6.948 min  
 Response: 0  
 Conc: N.D.

Instrument :  
 ECD\_P  
 ClientSampleId :



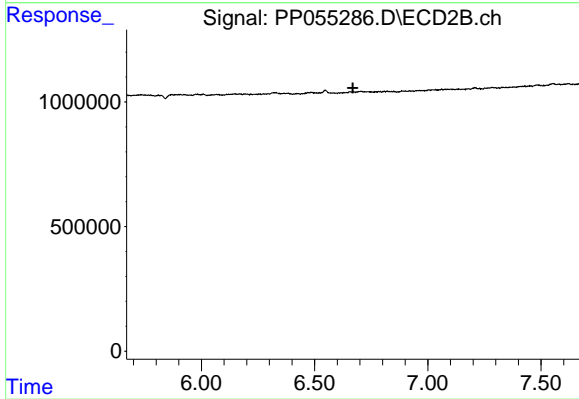
#28 AR-1254-3

R.T.: 6.008 min  
 Delta R.T.: -0.012 min  
 Response: 126064  
 Conc: 1.13 ng/ml



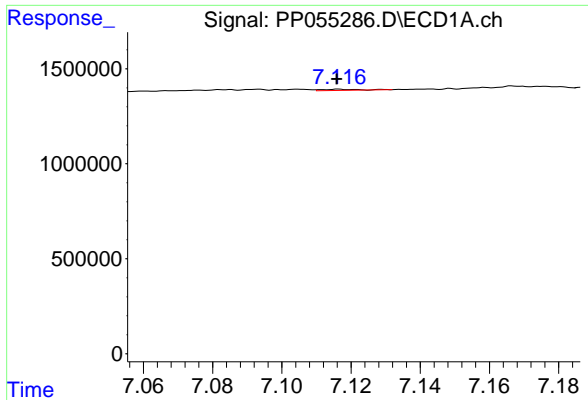
#30 AR-1254-5

R.T.: 7.680 min  
 Delta R.T.: 0.023 min  
 Response: 711323  
 Conc: 7.03 ng/ml



#30 AR-1254-5

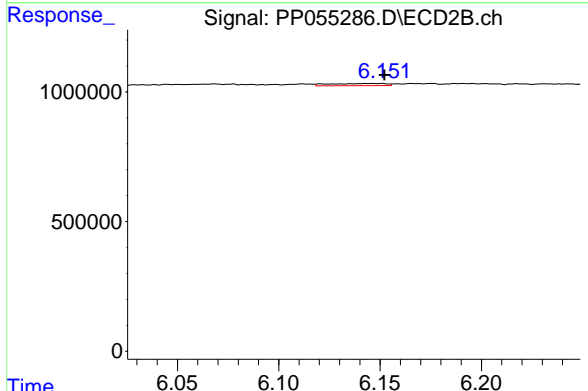
R.T.: 0.000 min  
 Exp R.T.: 6.669 min  
 Response: 0  
 Conc: N.D.



#31 AR-1260-1

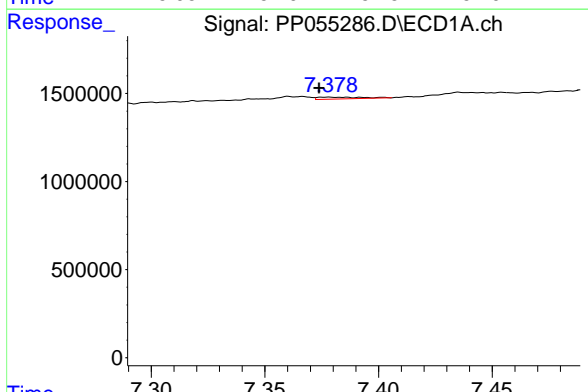
R.T.: 7.116 min  
 Delta R.T.: 0.000 min  
 Response: 48112  
 Conc: 0.50 ng/ml

Instrument :  
 ECD\_P  
 ClientSampleId :



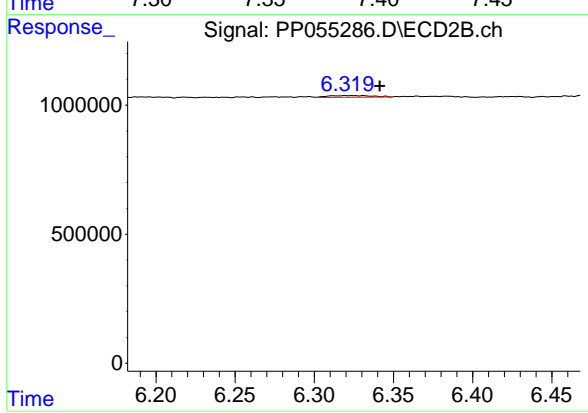
#31 AR-1260-1

R.T.: 6.146 min  
 Delta R.T.: -0.006 min  
 Response: 161249  
 Conc: 2.08 ng/ml



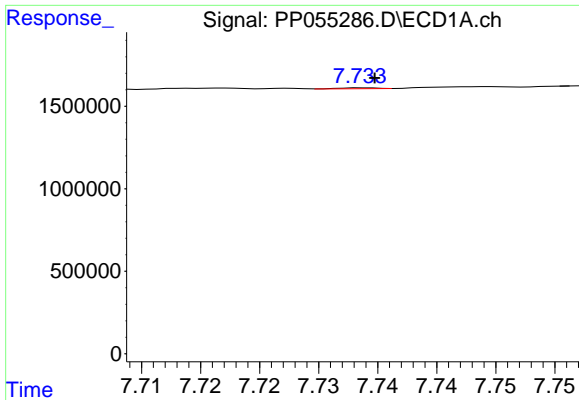
#32 AR-1260-2

R.T.: 7.378 min  
 Delta R.T.: 0.004 min  
 Response: 141116  
 Conc: 1.25 ng/ml



#32 AR-1260-2

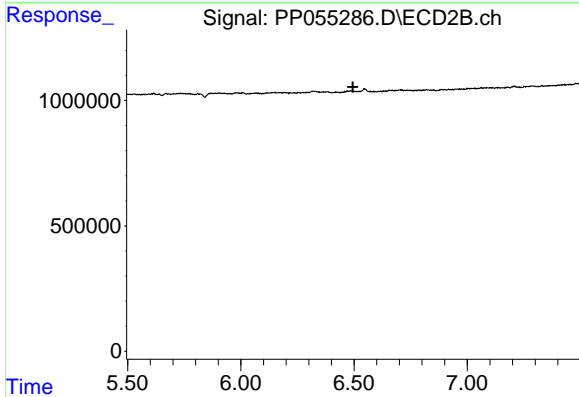
R.T.: 6.331 min  
 Delta R.T.: -0.010 min  
 Response: 126520  
 Conc: 1.41 ng/ml



#33 AR-1260-3

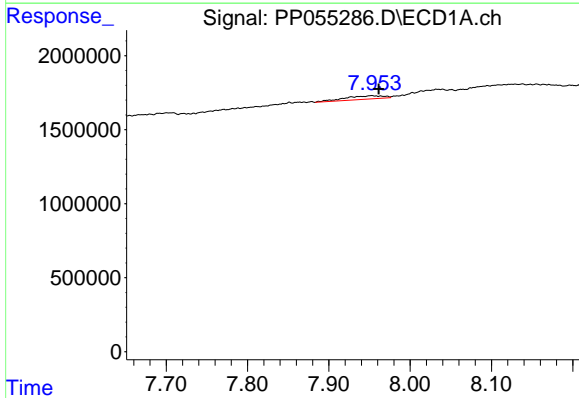
R.T.: 7.734 min  
 Delta R.T.: 0.000 min  
 Response: 12269  
 Conc: 0.15 ng/ml

Instrument :  
 ECD\_P  
 ClientSampleId :



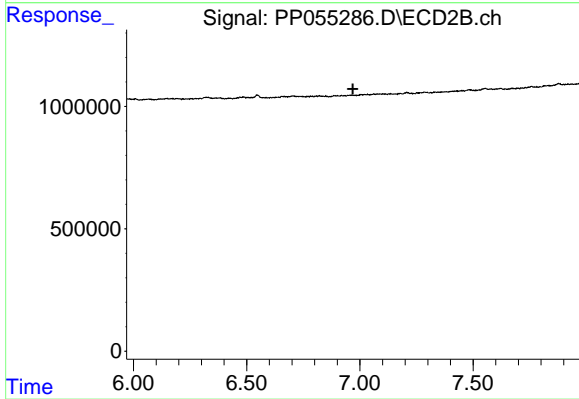
#33 AR-1260-3

R.T.: 0.000 min  
 Exp R.T. : 6.495 min  
 Response: 0  
 Conc: N.D.



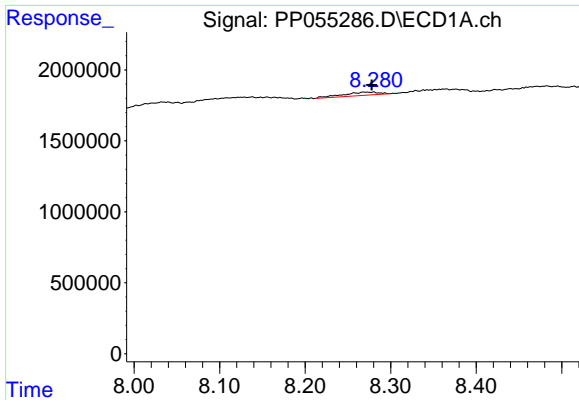
#34 AR-1260-4

R.T.: 7.953 min  
 Delta R.T.: -0.009 min  
 Response: 767095  
 Conc: 7.90 ng/ml



#34 AR-1260-4

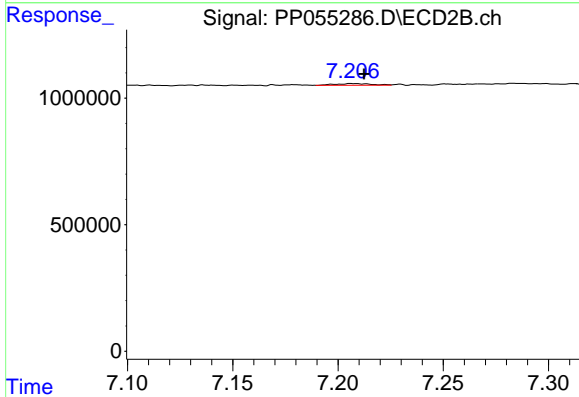
R.T.: 0.000 min  
 Exp R.T. : 6.969 min  
 Response: 0  
 Conc: N.D.



#35 AR-1260-5

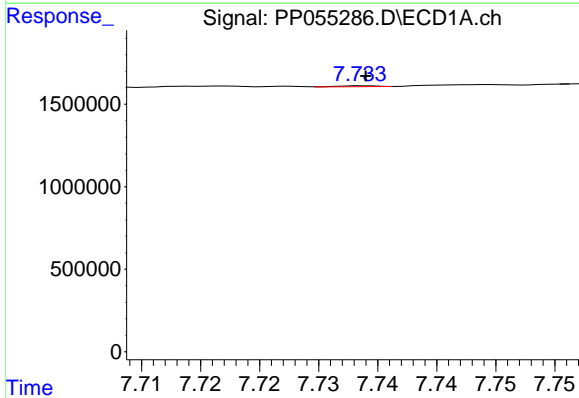
R.T.: 8.269 min  
 Delta R.T.: -0.009 min  
 Response: 679976  
 Conc: 3.82 ng/ml

Instrument :  
 ECD\_P  
 ClientSampleId :



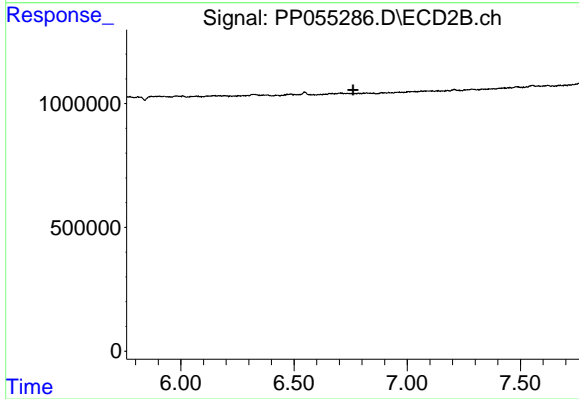
#35 AR-1260-5

R.T.: 7.207 min  
 Delta R.T.: -0.005 min  
 Response: 84362  
 Conc: 0.55 ng/ml



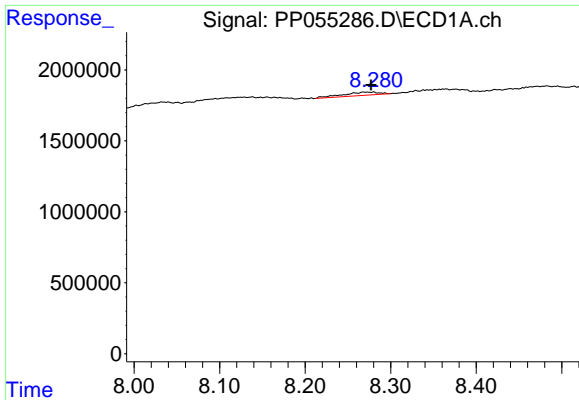
#36 AR-1262-1

R.T.: 7.734 min  
 Delta R.T.: 0.000 min  
 Response: 12269  
 Conc: 0.10 ng/ml



#36 AR-1262-1

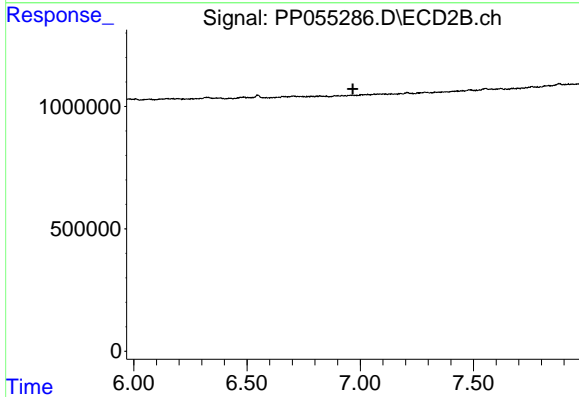
R.T.: 0.000 min  
 Exp R.T. : 6.760 min  
 Response: 0  
 Conc: N.D.



#37 AR-1262-2

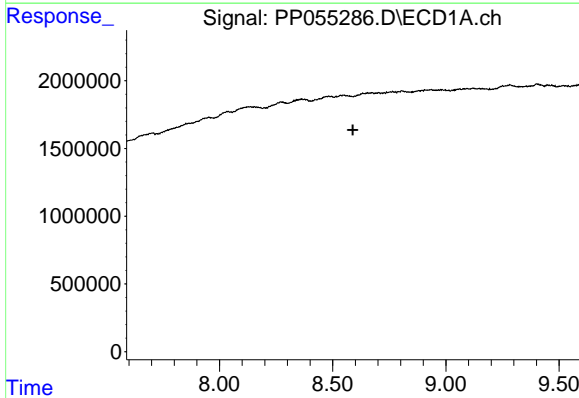
R.T.: 8.269 min  
 Delta R.T.: -0.008 min  
 Response: 679976  
 Conc: 3.38 ng/ml

Instrument :  
 ECD\_P  
 ClientSampleId :



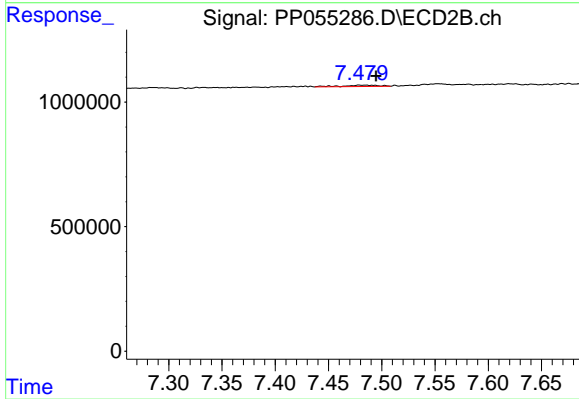
#37 AR-1262-2

R.T.: 0.000 min  
 Exp R.T. : 6.967 min  
 Response: 0  
 Conc: N.D.



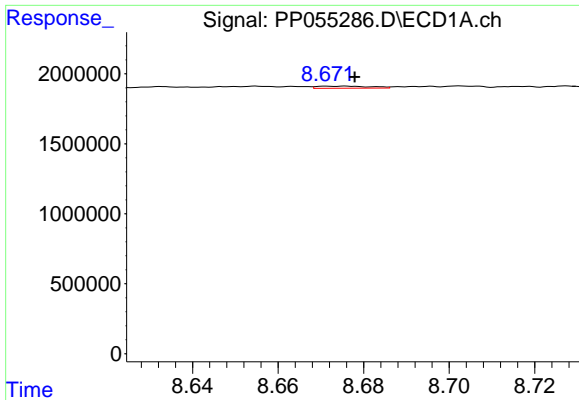
#38 AR-1262-3

R.T.: 0.000 min  
 Exp R.T. : 8.589 min  
 Response: 0  
 Conc: N.D.



#38 AR-1262-3

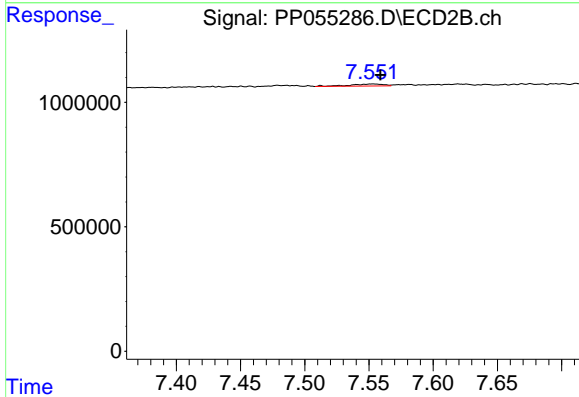
R.T.: 7.479 min  
 Delta R.T.: -0.016 min  
 Response: 118961  
 Conc: 1.63 ng/ml



#39 AR-1262-4

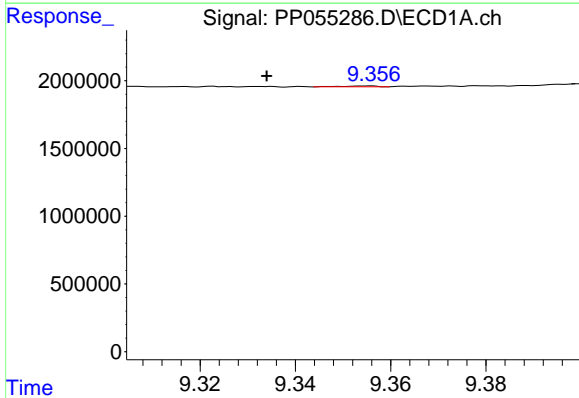
R.T.: 8.676 min  
 Delta R.T.: -0.002 min  
 Response: 129869  
 Conc: 1.69 ng/ml

Instrument :  
 ECD\_P  
 ClientSampleId :



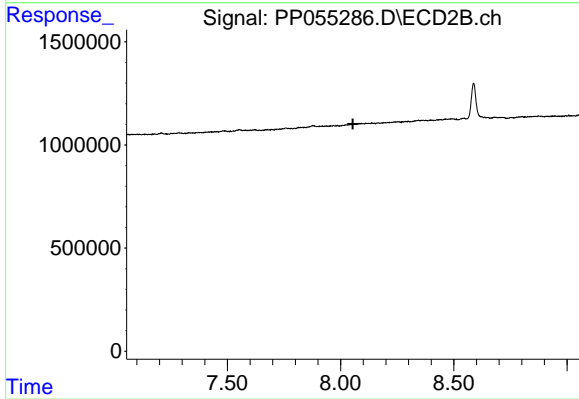
#39 AR-1262-4

R.T.: 7.552 min  
 Delta R.T.: -0.006 min  
 Response: 146337  
 Conc: 1.12 ng/ml



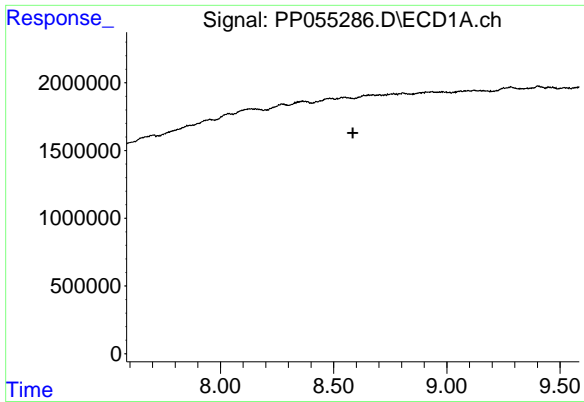
#40 AR-1262-5

R.T.: 9.355 min  
 Delta R.T.: 0.021 min  
 Response: 30380  
 Conc: 0.42 ng/ml



#40 AR-1262-5

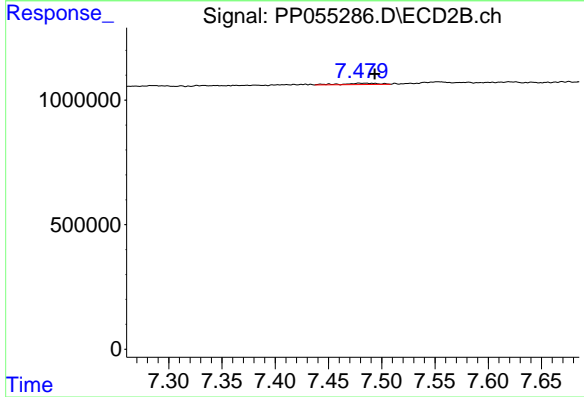
R.T.: 0.000 min  
 Exp R.T. : 8.054 min  
 Response: 0  
 Conc: N.D.



#41 AR-1268-1

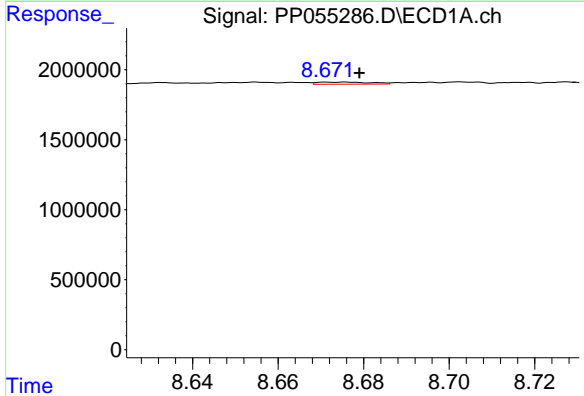
R.T.: 0.000 min  
 Exp R.T.: 8.585 min  
 Response: 0  
 Conc: N.D.

Instrument :  
 ECD\_P  
 ClientSampleId :



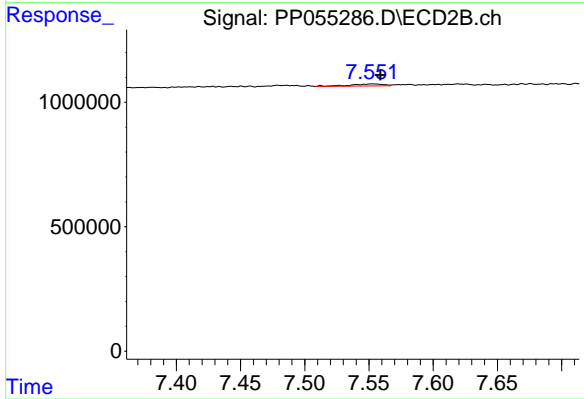
#41 AR-1268-1

R.T.: 7.479 min  
 Delta R.T.: -0.014 min  
 Response: 118961  
 Conc: 0.55 ng/ml



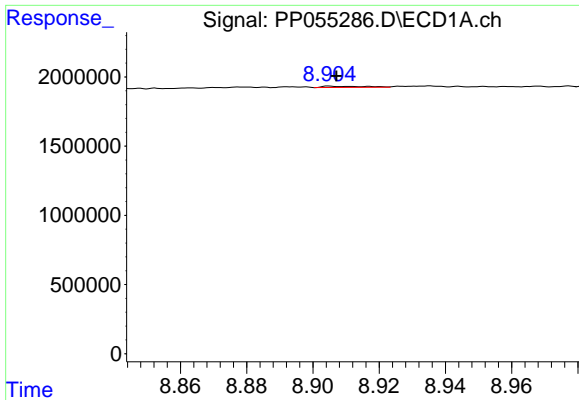
#42 AR-1268-2

R.T.: 8.676 min  
 Delta R.T.: -0.003 min  
 Response: 129869  
 Conc: 0.57 ng/ml



#42 AR-1268-2

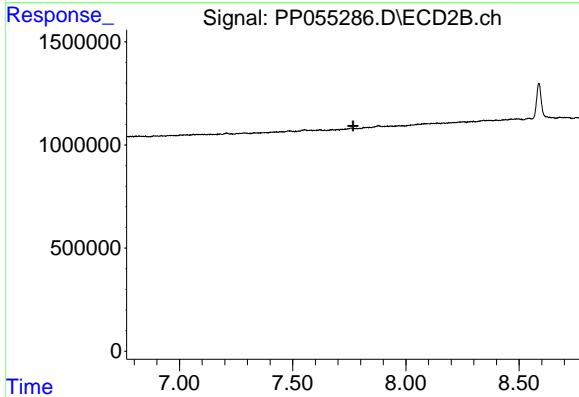
R.T.: 7.552 min  
 Delta R.T.: -0.006 min  
 Response: 146337  
 Conc: 0.75 ng/ml



#43 AR-1268-3

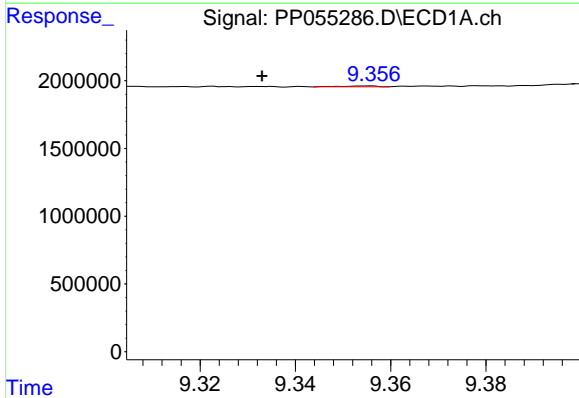
R.T.: 8.905 min  
 Delta R.T.: -0.002 min  
 Response: 77335  
 Conc: 0.39 ng/ml

Instrument :  
 ECD\_P  
 ClientSampleId :



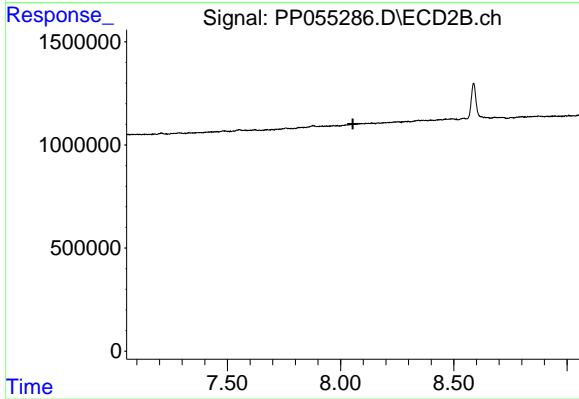
#43 AR-1268-3

R.T.: 0.000 min  
 Exp R.T. : 7.766 min  
 Response: 0  
 Conc: N.D.



#44 AR-1268-4

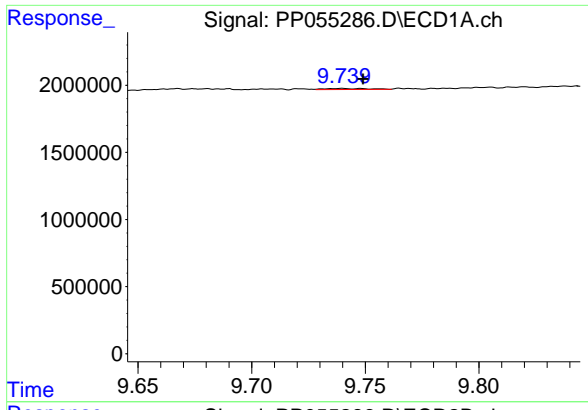
R.T.: 9.355 min  
 Delta R.T.: 0.022 min  
 Response: 30380  
 Conc: 0.39 ng/ml



#44 AR-1268-4

R.T.: 0.000 min  
 Exp R.T. : 8.054 min  
 Response: 0  
 Conc: N.D.

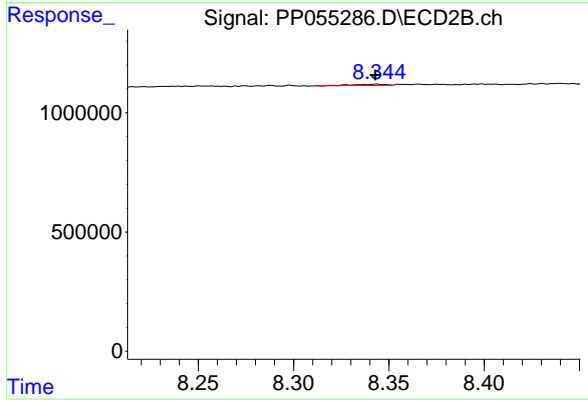




#45 AR-1268-5

R.T.: 9.740 min  
Delta R.T.: -0.009 min  
Response: 107446  
Conc: 0.17 ng/ml

Instrument :  
ECD\_P  
ClientSampleId :



#45 AR-1268-5

R.T.: 8.343 min  
Delta R.T.: 0.000 min  
Response: 63218  
Conc: 0.12 ng/ml