

Data Path : Z:\pestpcbsrv\HPCHEM1\ECD_P\Data\PP020325\
 Data File : PP069436.D
 Signal(s) : Signal #1: ECD1A.ch Signal #2: ECD2B.ch
 Acq On : 04 Feb 2025 00:35
 Operator : YP\AJ
 Sample : Q1262-03
 Misc :
 ALS Vial : 37 Sample Multiplier: 1

Instrument :
 ECD_P
ClientSampleId :
 CONCRETE-PAD

Integration File signal 1: autoint1.e
 Integration File signal 2: autoint2.e
 Quant Time: Feb 04 01:51:46 2025
 Quant Method : Z:\pestpcbsrv\HPCHEM1\ECD_P\methods\PP012825.M
 Quant Title : GC EXTRACTABLES
 QLast Update : Wed Jan 29 00:13:21 2025
 Response via : Initial Calibration
 Integrator: ChemStation

Volume Inj. : 2 µl
 Signal #1 Phase : ZB-MR1 Signal #2 Phase: ZB-MR2
 Signal #1 Info : 30Mx0.32mmx 0.50µ Signal #2 Info : 30M x 0.32mm x 0.25µm

| Compound | RT#1 | RT#2 | Resp#1 | Resp#2 | ng/ml | ng/ml |
|-----------------------------|--------|-------|----------|----------|--------|--------|
| ----- | | | | | | |
| System Monitoring Compounds | | | | | | |
| 1) SA Tetrachlo... | 4.536 | 3.840 | 37296833 | 24896128 | 26.055 | 27.894 |
| 2) SA Decachlor... | 10.272 | 8.906 | 27086342 | 26845615 | 24.784 | 24.002 |

Target Compounds

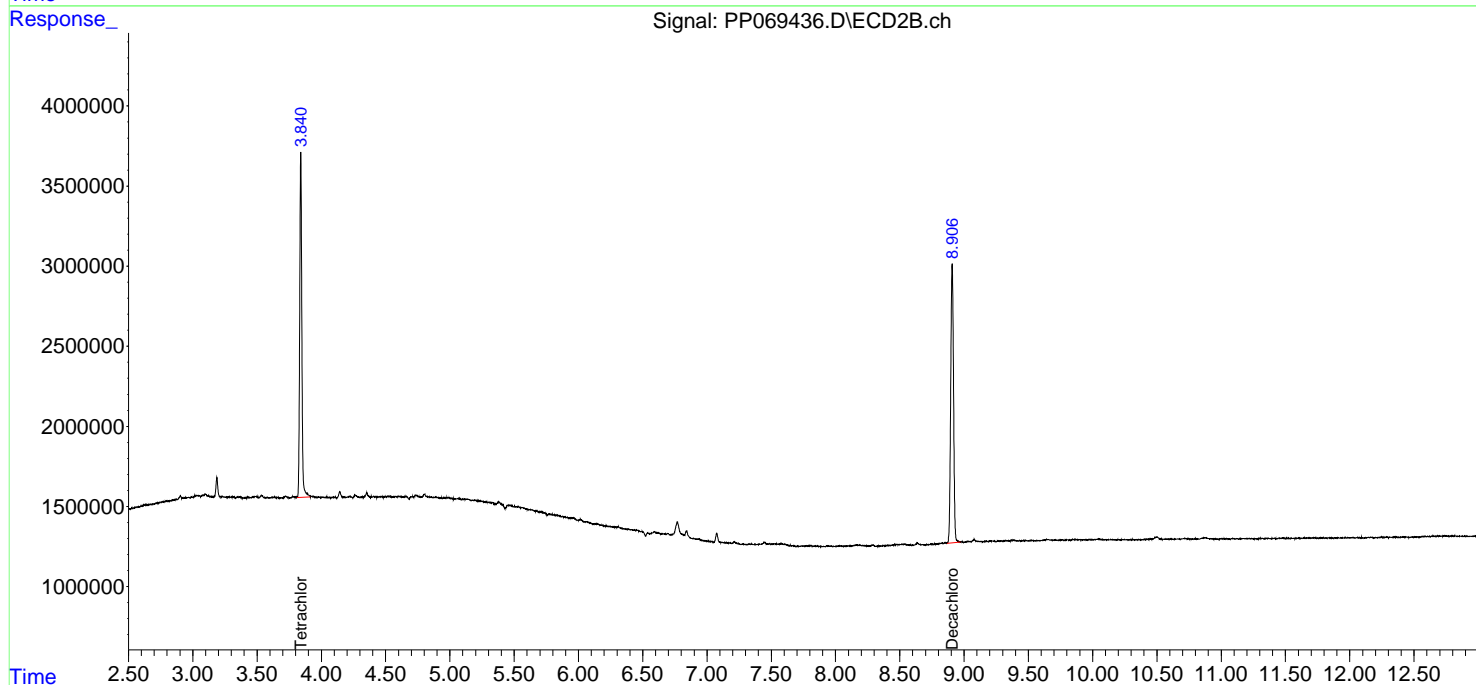
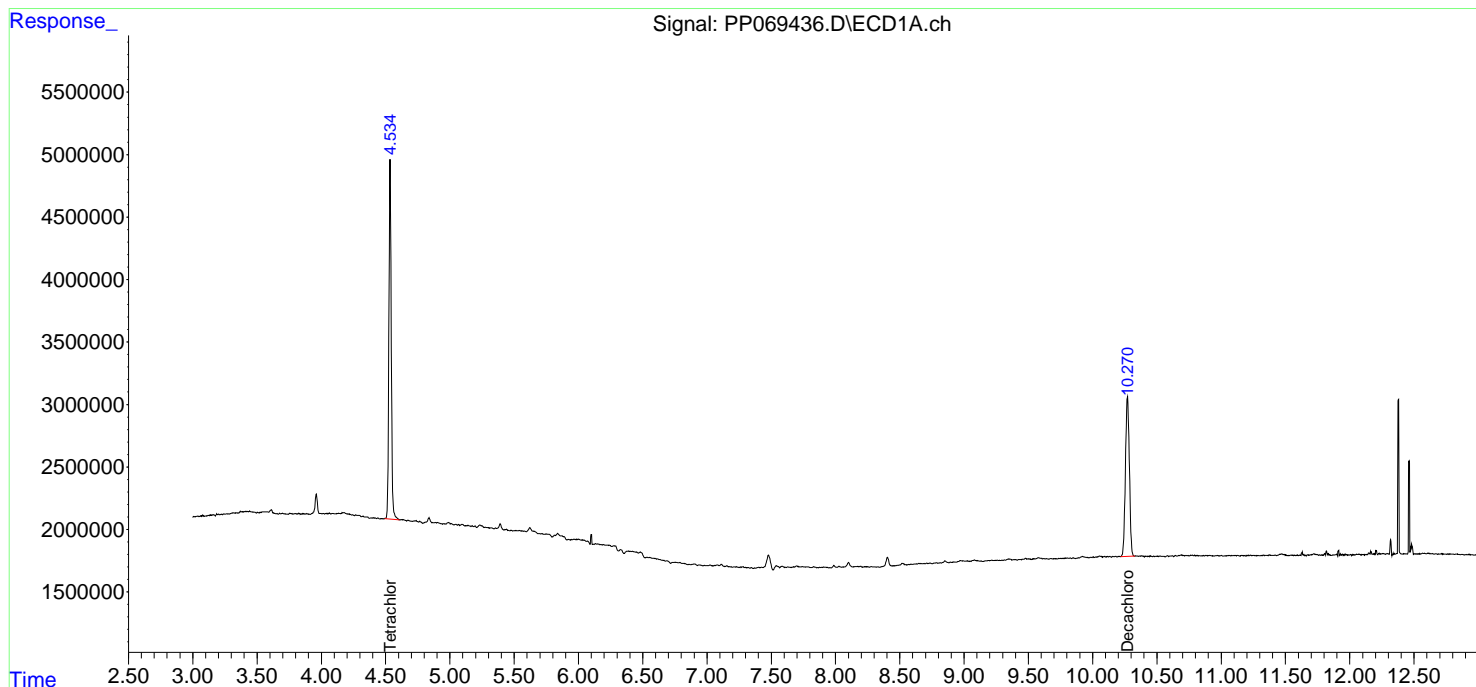
 (f)=RT Delta > 1/2 Window (#)=Amounts differ by > 25% (m)=manual int.

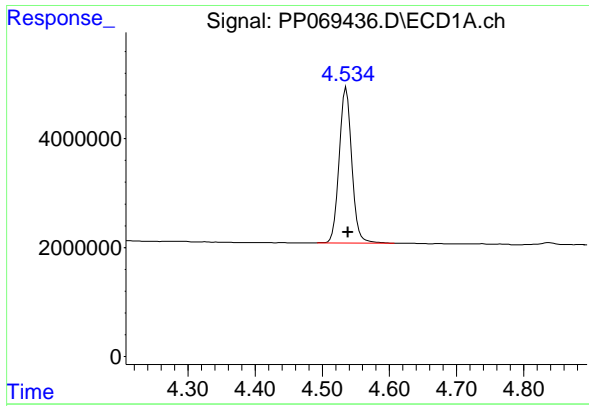
Data Path : Z:\pestpcbsrv\HPCHEM1\ECD_P\Data\PP020325\
Data File : PP069436.D
Signal(s) : Signal #1: ECD1A.ch Signal #2: ECD2B.ch
Acq On : 04 Feb 2025 00:35
Operator : YP\AJ
Sample : Q1262-03
Misc :
ALS Vial : 37 Sample Multiplier: 1

Instrument :
ECD_P
ClientSampleId :
CONCRETE-PAD

Integration File signal 1: autoint1.e
Integration File signal 2: autoint2.e
Quant Time: Feb 04 01:51:46 2025
Quant Method : Z:\pestpcbsrv\HPCHEM1\ECD_P\methods\PP012825.M
Quant Title : GC EXTRACTABLES
QLast Update : Wed Jan 29 00:13:21 2025
Response via : Initial Calibration
Integrator: ChemStation

Volume Inj. : 2 µl
Signal #1 Phase : ZB-MR1 Signal #2 Phase: ZB-MR2
Signal #1 Info : 30Mx0.32mmx 0.50µm Signal #2 Info : 30M x 0.32mm x 0.25µm

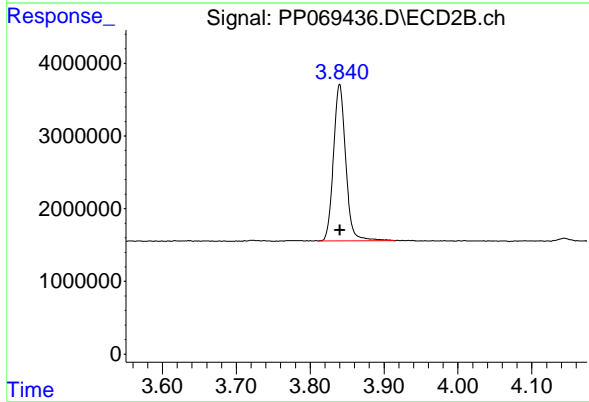




#1 Tetrachloro-m-xylene

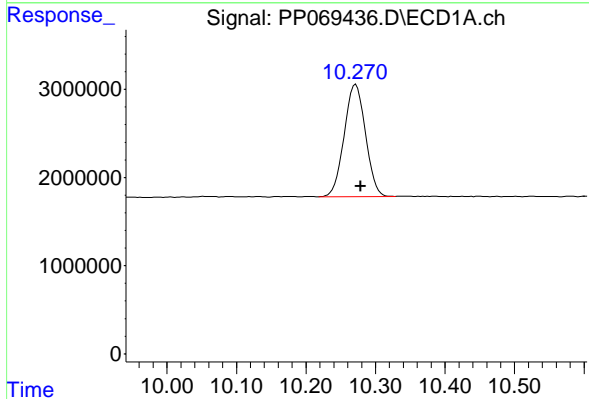
R.T.: 4.536 min
 Delta R.T.: -0.002 min
 Response: 37296833
 Conc: 26.05 ng/ml

Instrument :
 ECD_P
 ClientSampleId :
 CONCRETE-PAD



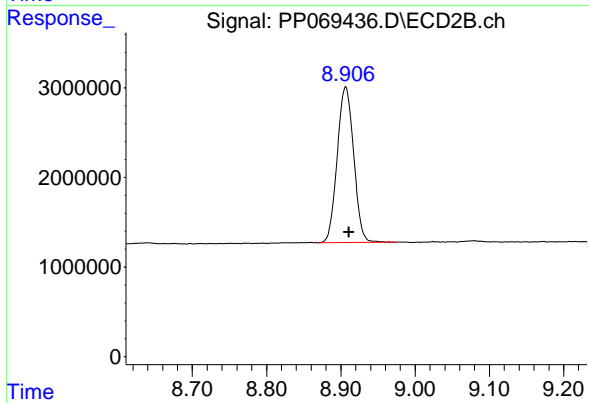
#1 Tetrachloro-m-xylene

R.T.: 3.840 min
 Delta R.T.: 0.000 min
 Response: 24896128
 Conc: 27.89 ng/ml



#2 Decachlorobiphenyl

R.T.: 10.272 min
 Delta R.T.: -0.007 min
 Response: 27086342
 Conc: 24.78 ng/ml



#2 Decachlorobiphenyl

R.T.: 8.906 min
 Delta R.T.: -0.005 min
 Response: 26845615
 Conc: 24.00 ng/ml