

Data Path : Z:\pestpcbsrv\HPCHEM1\ECD\_P\Data\PP020325\  
 Data File : PP069451.D  
 Signal(s) : Signal #1: ECD1A.ch Signal #2: ECD2B.ch  
 Acq On : 04 Feb 2025 05:12  
 Operator : YP\AJ  
 Sample : Q1266-01  
 Misc :  
 ALS Vial : 47 Sample Multiplier: 1

**Instrument :**  
 ECD\_P  
**ClientSampleId :**  
 TRE-25-0004

**Manual Integrations**  
**APPROVED**

Reviewed By :Yogesh Patel 02/04/2025  
 Supervised By :Ankita Jodhani 02/04/2025

Integration File signal 1: autoint1.e  
 Integration File signal 2: autoint2.e  
 Quant Time: Feb 04 07:23:48 2025  
 Quant Method : Z:\pestpcbsrv\HPCHEM1\ECD\_P\methods\PP012825.M  
 Quant Title : GC EXTRACTABLES  
 QLast Update : Wed Jan 29 00:13:21 2025  
 Response via : Initial Calibration  
 Integrator: ChemStation

Volume Inj. : 2 µl  
 Signal #1 Phase : ZB-MR1 Signal #2 Phase: ZB-MR2  
 Signal #1 Info : 30Mx0.32mmx 0.50µ Signal #2 Info : 30M x 0.32mm x 0.25µm

Compound	RT#1	RT#2	Resp#1	Resp#2	ng/ml	ng/ml
-----						
System Monitoring Compounds						
1) SA Tetrachlo...	4.536	3.840	18292615	10898578	12.779m	12.211m
2) SA Decachlor...	10.274	8.906	7890656	5927551	7.220	5.300m#

Target Compounds

(f)=RT Delta > 1/2 Window (#)=Amounts differ by > 25% (m)=manual int.

Data Path : Z:\pestpcbsrv\HPCHEM1\ECD\_P\Data\PP020325\  
 Data File : PP069451.D  
 Signal(s) : Signal #1: ECD1A.ch Signal #2: ECD2B.ch  
 Acq On : 04 Feb 2025 05:12  
 Operator : YP\AJ  
 Sample : Q1266-01  
 Misc :  
 ALS Vial : 47 Sample Multiplier: 1

**Instrument :**

ECD\_P

**ClientSampleId :**

TRE-25-0004

**Manual Integrations**

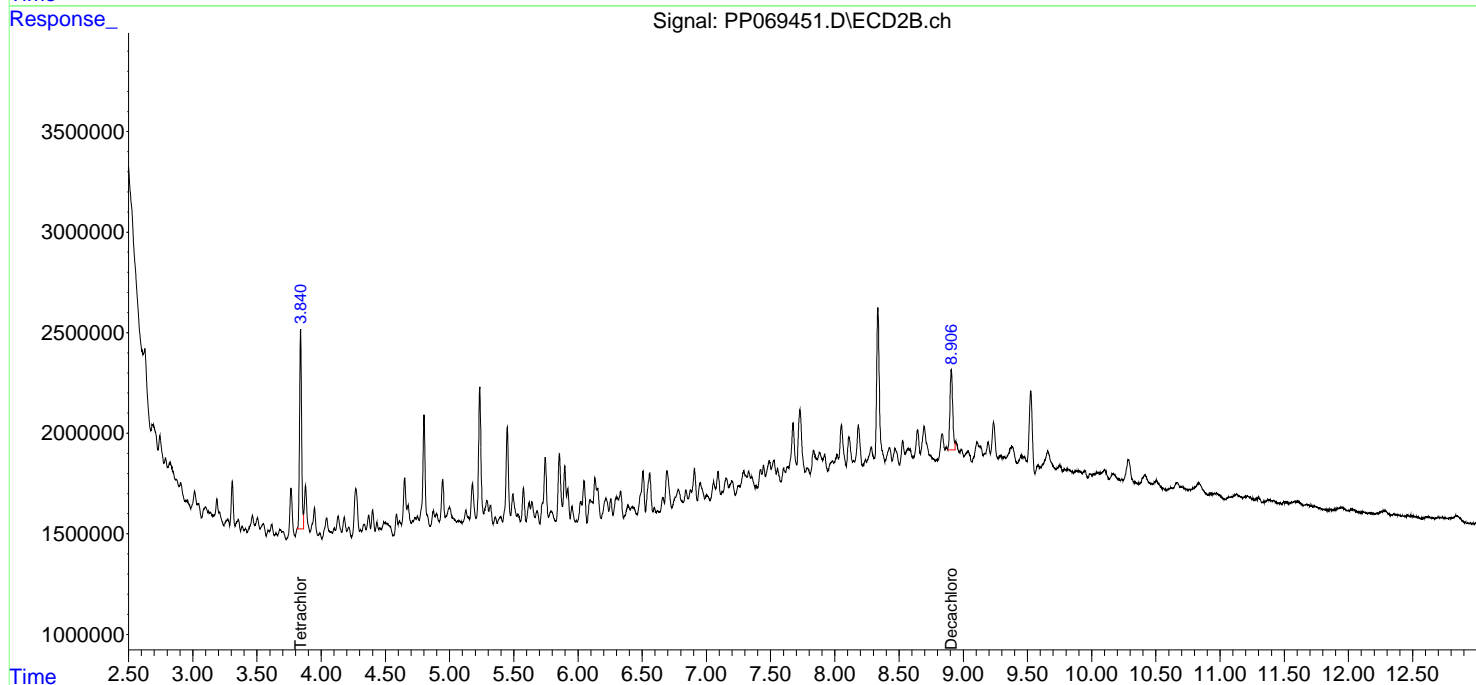
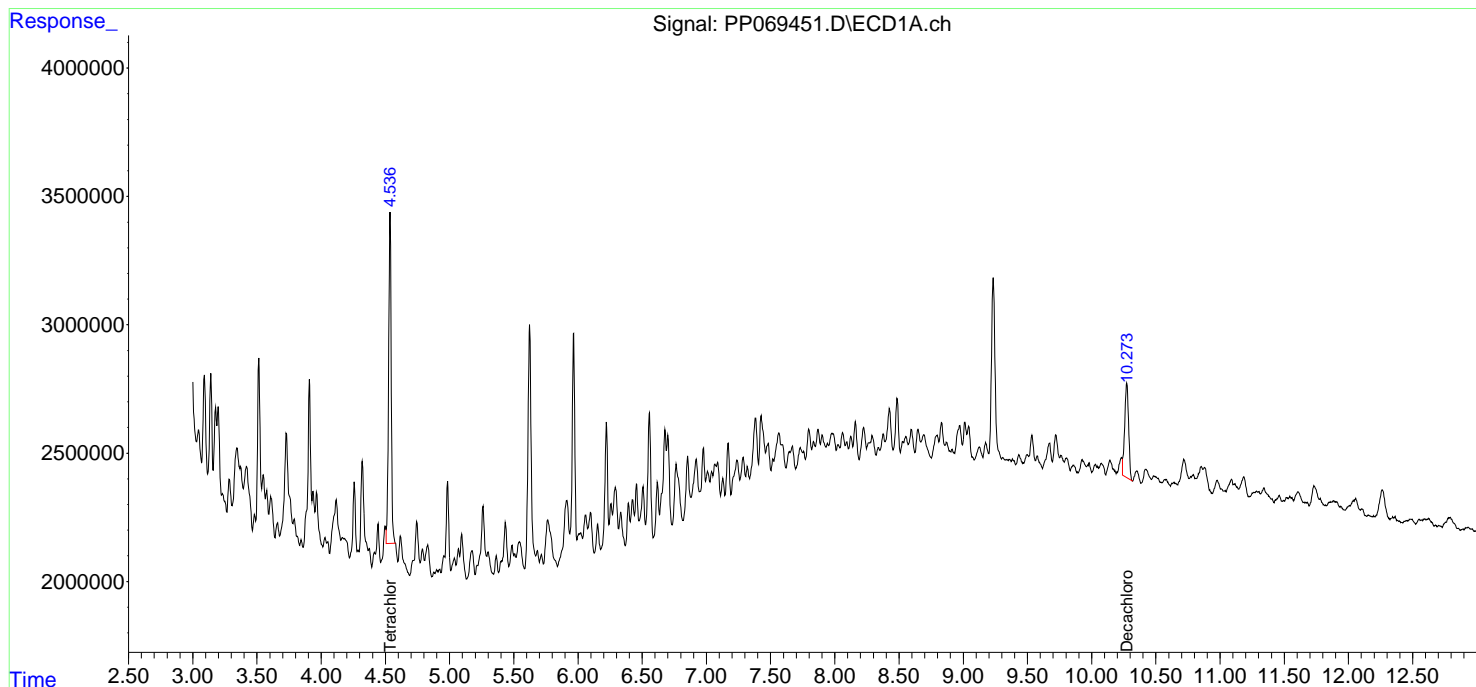
**APPROVED**

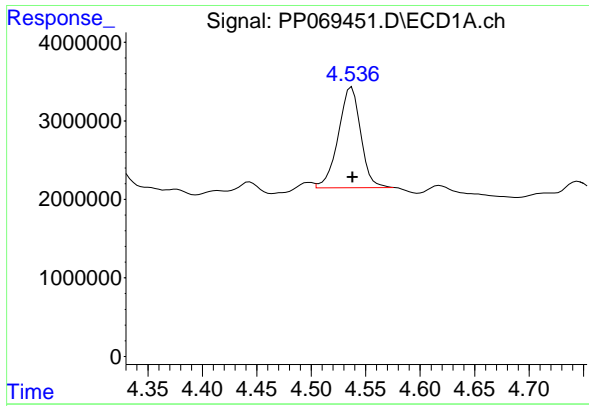
Reviewed By :Yogesh Patel 02/04/2025

Supervised By :Ankita Jodhani 02/04/2025

Integration File signal 1: autoint1.e  
 Integration File signal 2: autoint2.e  
 Quant Time: Feb 04 07:23:48 2025  
 Quant Method : Z:\pestpcbsrv\HPCHEM1\ECD\_P\methods\PP012825.M  
 Quant Title : GC EXTRACTABLES  
 QLast Update : Wed Jan 29 00:13:21 2025  
 Response via : Initial Calibration  
 Integrator: ChemStation

Volume Inj. : 2 µl  
 Signal #1 Phase : ZB-MR1 Signal #2 Phase: ZB-MR2  
 Signal #1 Info : 30Mx0.32mmx 0.50µm Signal #2 Info : 30M x 0.32mm x 0.25µm





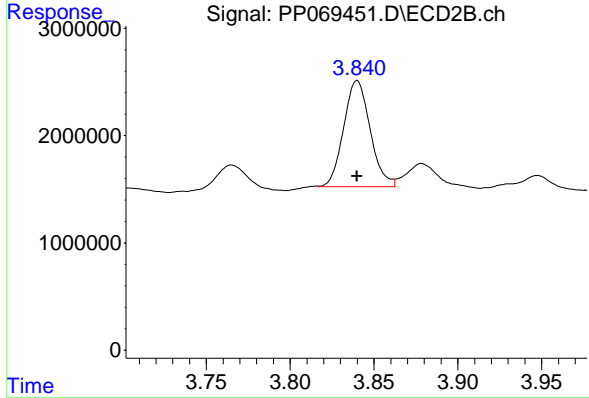
#1 Tetrachloro-m-xylene

R.T.: 4.536 min  
 Delta R.T.: -0.002 min  
 Response: 18292615  
 Conc: 12.78 ng/ml

Instrument : ECD\_P  
 Client Sample Id : TRE-25-0004

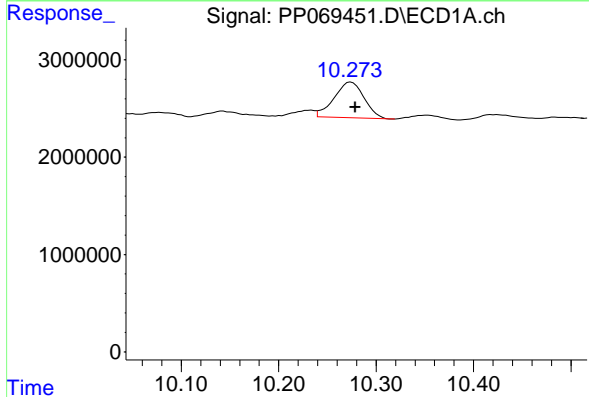
Manual Integrations  
 APPROVED

Reviewed By :Yogesh Patel 02/04/2025  
 Supervised By :Ankita Jodhani 02/04/2025



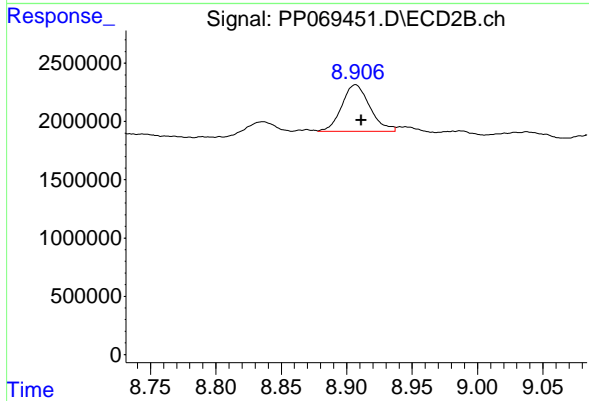
#1 Tetrachloro-m-xylene

R.T.: 3.840 min  
 Delta R.T.: 0.000 min  
 Response: 10898578  
 Conc: 12.21 ng/ml m



#2 Decachlorobiphenyl

R.T.: 10.274 min  
 Delta R.T.: -0.004 min  
 Response: 7890656  
 Conc: 7.22 ng/ml



#2 Decachlorobiphenyl

R.T.: 8.906 min  
 Delta R.T.: -0.005 min  
 Response: 5927551  
 Conc: 5.30 ng/ml m