

Data Path : Z:\pestpcbsrv\HPCHEM1\ECD_P\Data\PP020524\
 Data File : PP063260.D
 Signal(s) : Signal #1: ECD1A.ch Signal #2: ECD2B.ch
 Acq On : 05 Feb 2024 11:32
 Operator : YP\AJ
 Sample : AR1254ICC250
 Misc :
 ALS Vial : 6 Sample Multiplier: 1

Instrument :
 ECD_P
ClientSampleId :
 AR1254ICC250

Integration File signal 1: autoint1.e
 Integration File signal 2: autoint2.e
 Quant Time: Feb 05 11:50:41 2024
 Quant Method : Z:\pestpcbsrv\HPCHEM1\ECD_P\methods\PP020124.M
 Quant Title : GC EXTRACTABLES
 QLast Update : Mon Feb 05 11:38:15 2024
 Response via : Initial Calibration
 Integrator: ChemStation

Volume Inj. : 2 µl
 Signal #1 Phase : ZB-MR1 Signal #2 Phase: ZB-MR2
 Signal #1 Info : 30Mx0.32mmx 0.50µ Signal #2 Info : 30M x 0.32mm x 0.25µm

Compound	RT#1	RT#2	Resp#1	Resp#2	ng/ml	ng/ml

System Monitoring Compounds						
1) SA Tetrachlo...	4.491	3.645	56421306	56317289	25.781	25.626
2) SA Decachlor...	10.362	8.695	57402490	62669599	26.030	26.236
Target Compounds						
26) L6 AR-1254-1	6.536	5.547	24173881	32184230	273.882	267.977
27) L6 AR-1254-2	6.757	5.695	35440917	28982573	270.672	269.838
28) L6 AR-1254-3	7.125	6.102	36927476	44825762	273.888	263.629
29) L6 AR-1254-4	7.414	6.330	21636076	21164640	265.598	259.943
30) L6 AR-1254-5	7.836	6.752	27356893	37647597	267.000	261.048

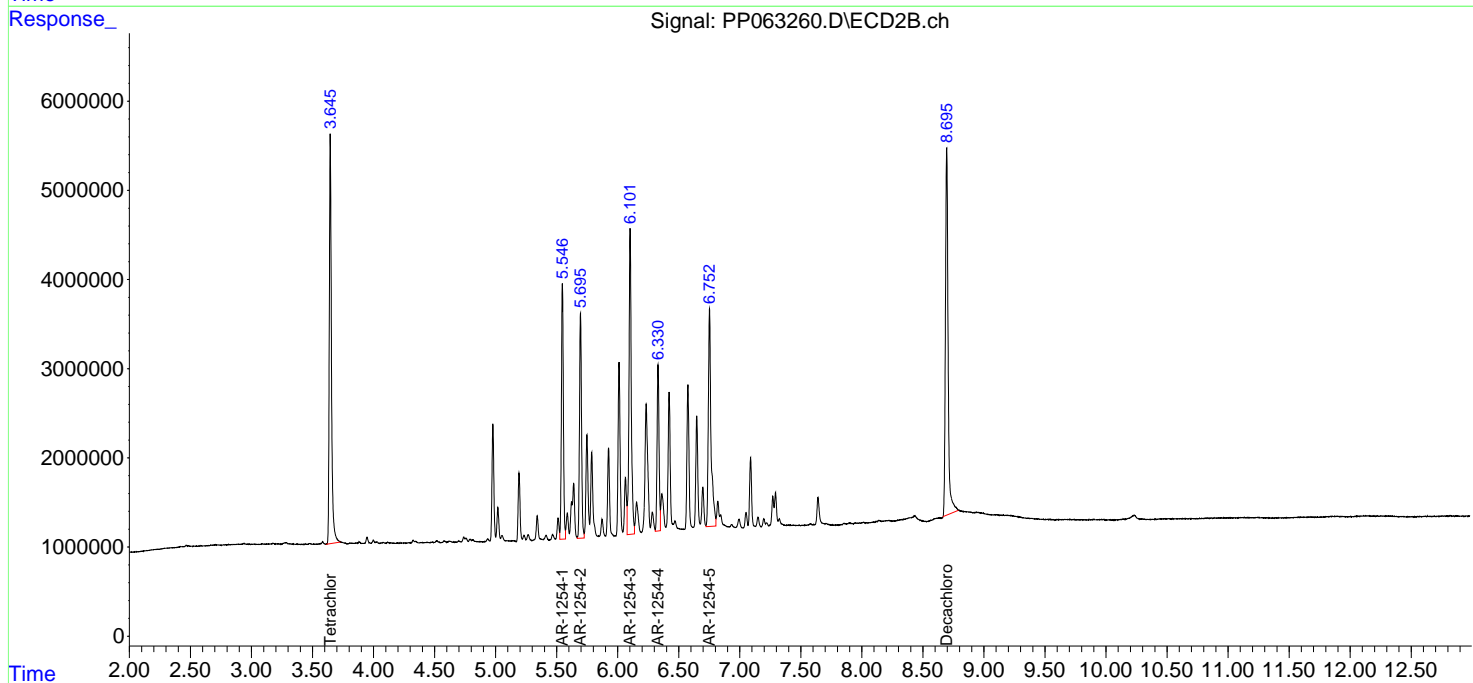
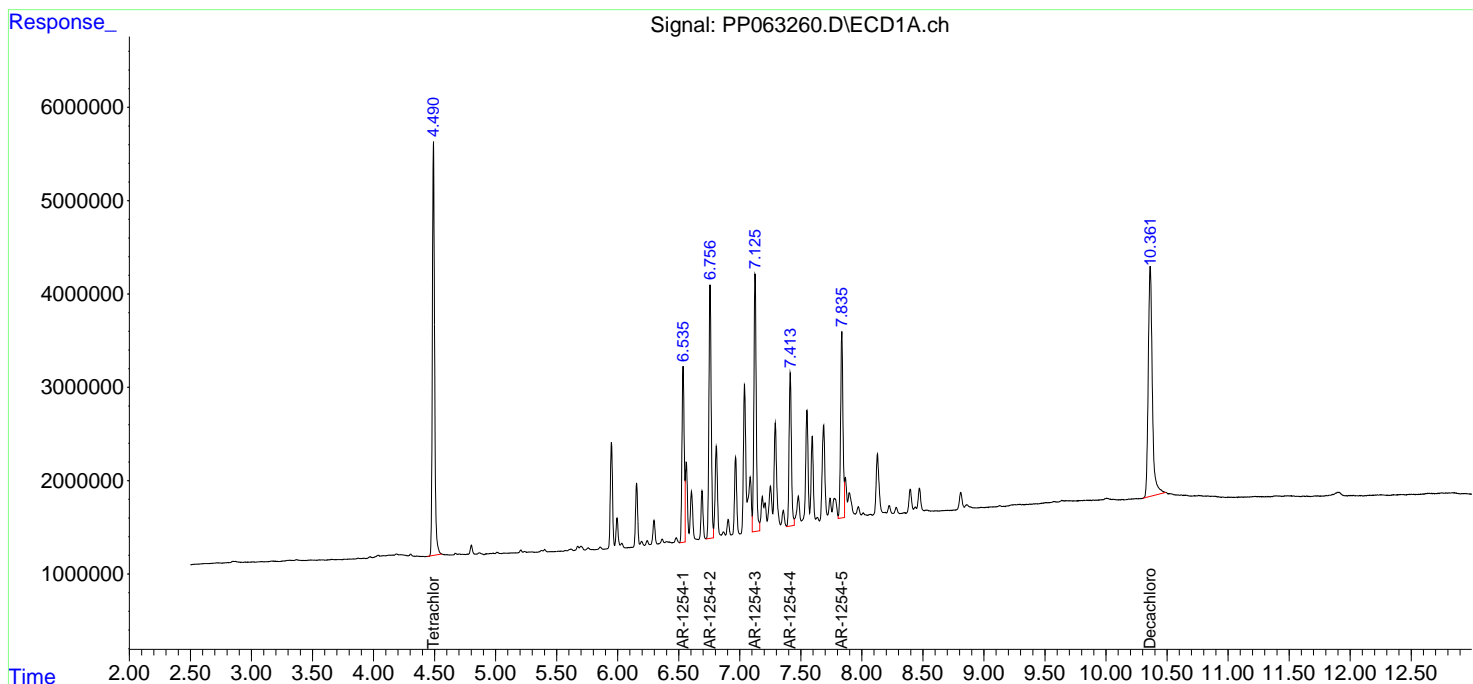
(f)=RT Delta > 1/2 Window (#)=Amounts differ by > 25% (m)=manual int.

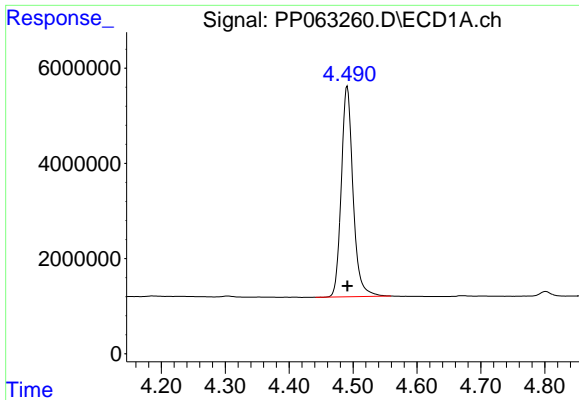
Data Path : Z:\pestpcbsrv\HPCHEM1\ECD_P\Data\PP020524\
 Data File : PP063260.D
 Signal(s) : Signal #1: ECD1A.ch Signal #2: ECD2B.ch
 Acq On : 05 Feb 2024 11:32
 Operator : YP\AJ
 Sample : AR1254ICC250
 Misc :
 ALS Vial : 6 Sample Multiplier: 1

Instrument :
 ECD_P
 ClientSampleId :
 AR1254ICC250

Integration File signal 1: autoint1.e
 Integration File signal 2: autoint2.e
 Quant Time: Feb 05 11:50:41 2024
 Quant Method : Z:\pestpcbsrv\HPCHEM1\ECD_P\methods\PP020124.M
 Quant Title : GC EXTRACTABLES
 QLast Update : Mon Feb 05 11:38:15 2024
 Response via : Initial Calibration
 Integrator: ChemStation

Volume Inj. : 2 µl
 Signal #1 Phase : ZB-MR1 Signal #2 Phase: ZB-MR2
 Signal #1 Info : 30Mx0.32mmx 0.50µ Signal #2 Info : 30M x 0.32mm x 0.25µm

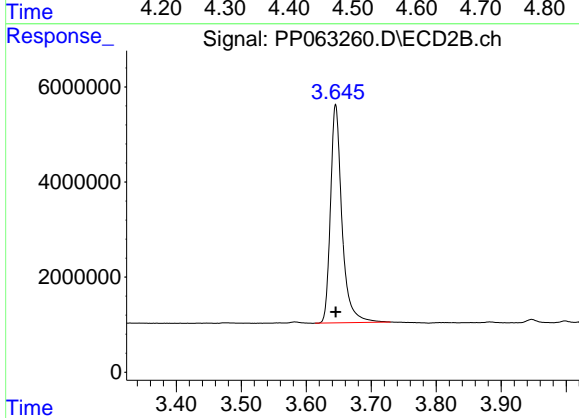




#1 Tetrachloro-m-xylene

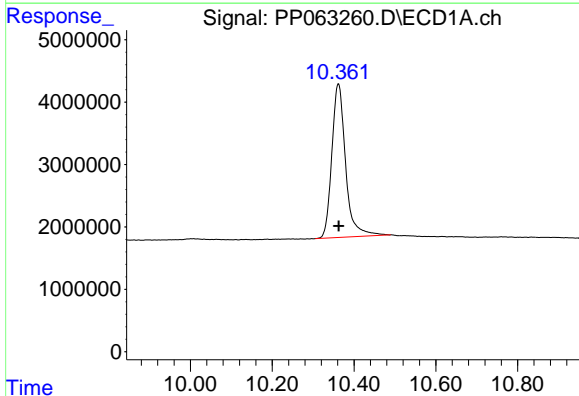
R.T.: 4.491 min
 Delta R.T.: 0.000 min
 Response: 56421306
 Conc: 25.78 ng/ml

Instrument :
 ECD_P
 ClientSampleId :
 AR1254ICC250



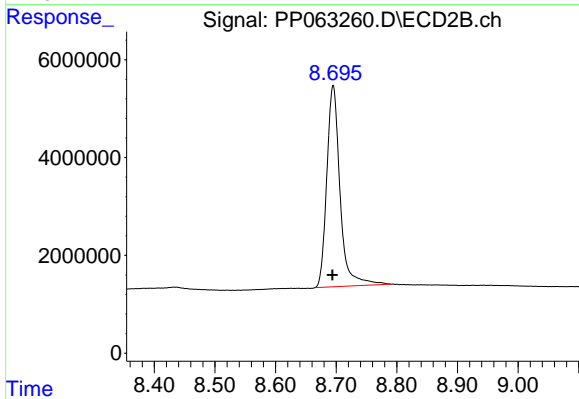
#1 Tetrachloro-m-xylene

R.T.: 3.645 min
 Delta R.T.: 0.000 min
 Response: 56317289
 Conc: 25.63 ng/ml



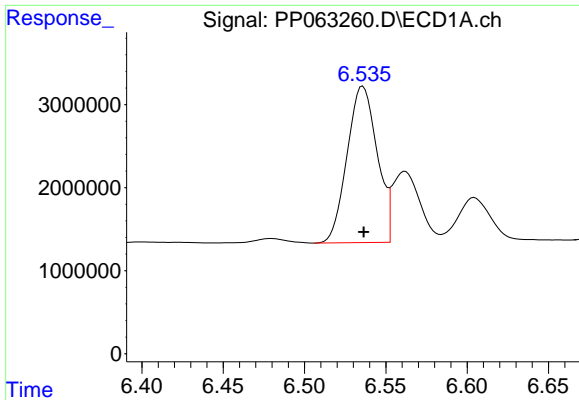
#2 Decachlorobiphenyl

R.T.: 10.362 min
 Delta R.T.: 0.000 min
 Response: 57402490
 Conc: 26.03 ng/ml



#2 Decachlorobiphenyl

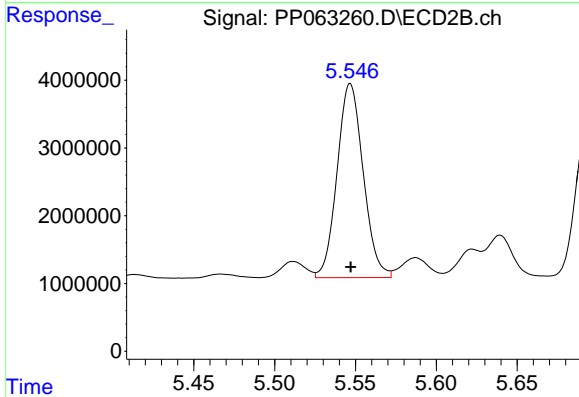
R.T.: 8.695 min
 Delta R.T.: 0.000 min
 Response: 62669599
 Conc: 26.24 ng/ml



#26 AR-1254-1

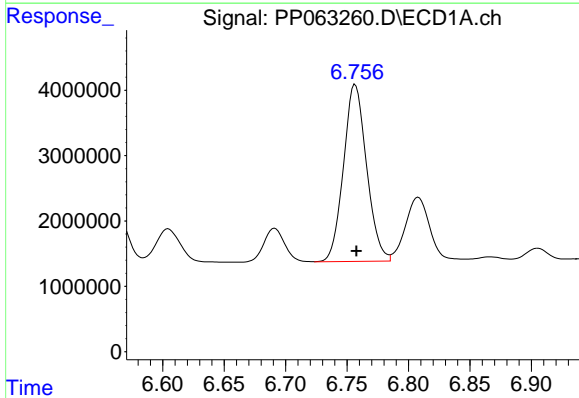
R.T.: 6.536 min
 Delta R.T.: 0.000 min
 Response: 24173881
 Conc: 273.88 ng/ml

Instrument :
 ECD_P
 ClientSampleId :
 AR1254ICC250



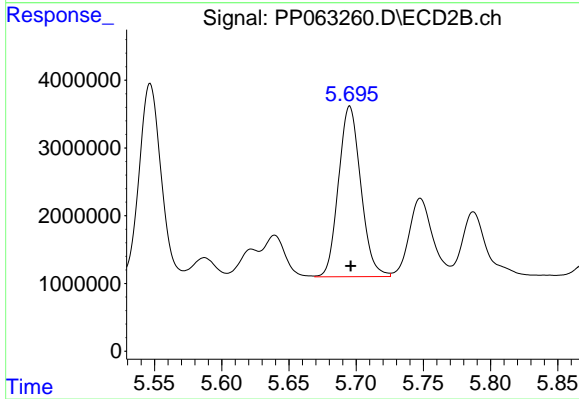
#26 AR-1254-1

R.T.: 5.547 min
 Delta R.T.: 0.000 min
 Response: 32184230
 Conc: 267.98 ng/ml



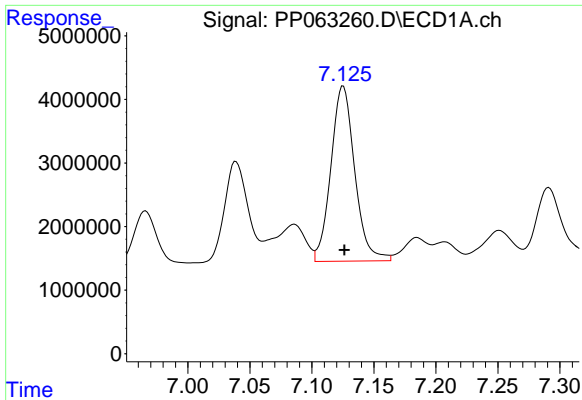
#27 AR-1254-2

R.T.: 6.757 min
 Delta R.T.: 0.000 min
 Response: 35440917
 Conc: 270.67 ng/ml



#27 AR-1254-2

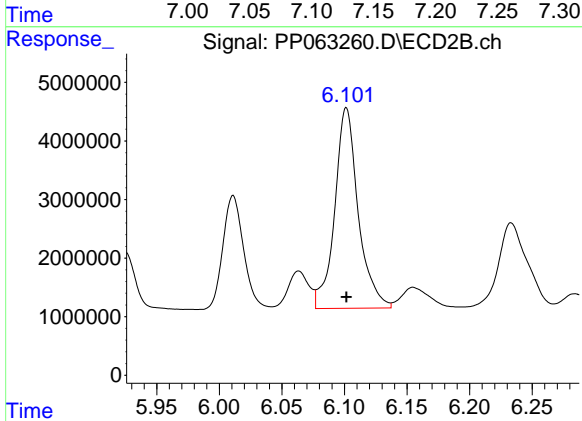
R.T.: 5.695 min
 Delta R.T.: 0.000 min
 Response: 28982573
 Conc: 269.84 ng/ml



#28 AR-1254-3

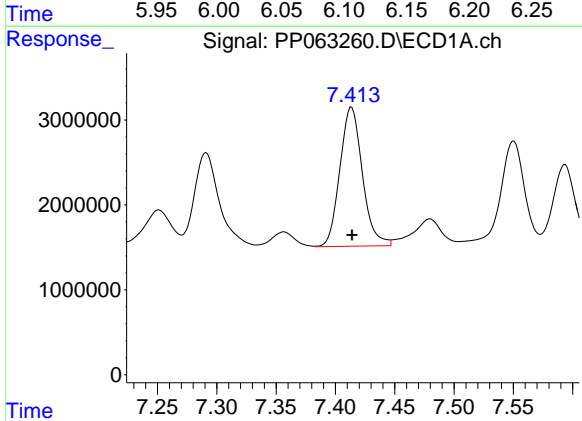
R.T.: 7.125 min
 Delta R.T.: 0.000 min
 Response: 36927476
 Conc: 273.89 ng/ml

Instrument :
 ECD_P
 ClientSampleId :
 AR1254ICC250



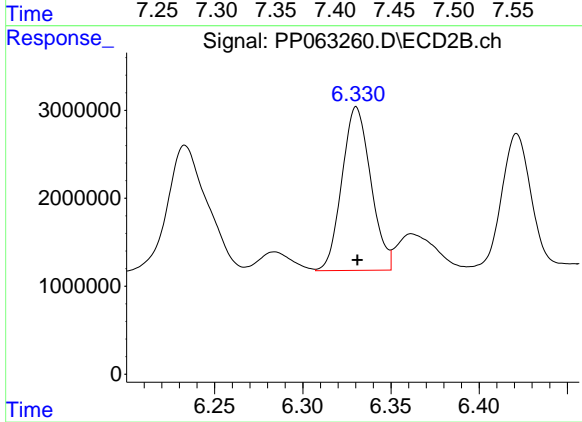
#28 AR-1254-3

R.T.: 6.102 min
 Delta R.T.: 0.000 min
 Response: 44825762
 Conc: 263.63 ng/ml



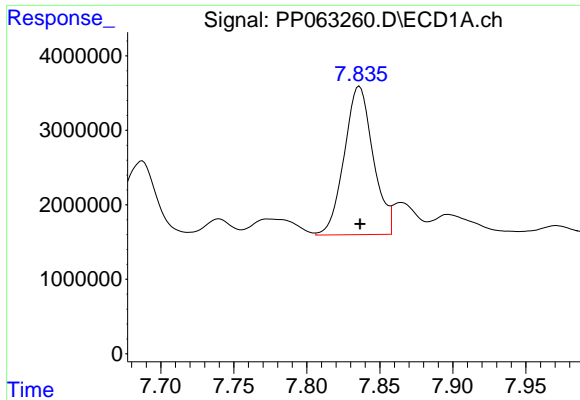
#29 AR-1254-4

R.T.: 7.414 min
 Delta R.T.: 0.000 min
 Response: 21636076
 Conc: 265.60 ng/ml



#29 AR-1254-4

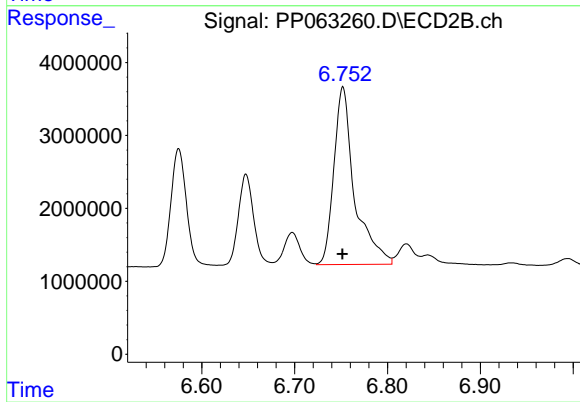
R.T.: 6.330 min
 Delta R.T.: 0.000 min
 Response: 21164640
 Conc: 259.94 ng/ml



#30 AR-1254-5

R.T.: 7.836 min
Delta R.T.: 0.000 min
Response: 27356893
Conc: 267.00 ng/ml

Instrument :
ECD_P
ClientSampleId :
AR1254ICC250



#30 AR-1254-5

R.T.: 6.752 min
Delta R.T.: 0.000 min
Response: 37647597
Conc: 261.05 ng/ml