

Data Path : Z:\pestpcbsrv\HPCHEM1\ECD_P\Data\PP020524\
 Data File : PP063269.D
 Signal(s) : Signal #1: ECD1A.ch Signal #2: ECD2B.ch
 Acq On : 05 Feb 2024 14:00
 Operator : YP\AJ
 Sample : AR1660CCC500
 Misc :
 ALS Vial : 9 Sample Multiplier: 1

Instrument :
 ECD_P
 ClientSampleId :
 AR1660CCC500

Integration File signal 1: autoint1.e
 Integration File signal 2: autoint2.e
 Quant Time: Feb 05 20:58:43 2024
 Quant Method : Z:\pestpcbsrv\HPCHEM1\ECD_P\methods\PP020124.M
 Quant Title : GC EXTRACTABLES
 QLast Update : Mon Feb 05 12:13:11 2024
 Response via : Initial Calibration
 Integrator: ChemStation

Volume Inj. : 2 µl
 Signal #1 Phase : ZB-MR1 Signal #2 Phase: ZB-MR2
 Signal #1 Info : 30Mx0.32mmx 0.50µ Signal #2 Info : 30M x 0.32mm x 0.25µm

Compound	RT#1	RT#2	Resp#1	Resp#2	ng/ml	ng/ml
System Monitoring Compounds						
1) SA Tetrachlo...	4.491	3.646	118.3E6	119.1E6	49.451	50.119
2) SA Decachlor...	10.363	8.695	118.6E6	128.1E6	52.750	51.697
Target Compounds						
3) L1 AR-1016-1	5.673	4.740	37312442	36136221	495.841	505.119
4) L1 AR-1016-2	5.696	4.758	55028932	51748283	506.659	503.812
5) L1 AR-1016-3	5.759	4.936	35078681	27983352	508.319	506.038
6) L1 AR-1016-4	5.858	4.978	28555911	24711566	509.896	499.352
7) L1 AR-1016-5	6.156	5.193	31155846	31751005	510.246	504.740
8) L2 AR-1221-1	4.698	3.861	4179026	3932232	150.186	148.705
9) L2 AR-1221-2	4.790	3.948	6348600	5826839	297.568	294.998
10) L2 AR-1221-3	4.866	4.025	21168473	21929321	343.636	360.181
11) L3 AR-1232-1	4.866	4.025	21168473	21929321	398.695	408.008
12) L3 AR-1232-2	5.403	4.758	30708767	51748283	1015.097	1079.880
13) L3 AR-1232-3	5.696	4.936	55028932	27983352	1079.809	1077.288
14) L3 AR-1232-4	5.858	5.020	28555911	30559533	1086.823	1172.333
15) L3 AR-1232-5	5.949	5.193	27421301	31751005	1189.410	1164.528
16) L4 AR-1242-1	5.673	4.740	37312442	36136221	655.302	664.974
17) L4 AR-1242-2	5.696	4.758	55028932	51748283	671.202	664.444
18) L4 AR-1242-3	5.759	4.936	35078681	27983352	668.434	660.347
19) L4 AR-1242-4	5.858	5.020	28555911	30559533	665.035	654.341
20) L4 AR-1242-5	6.602	5.547	8860701	31321632	198.684	605.218 #
21) L5 AR-1248-1	5.673	4.740	37312442	36136221	841.316	872.255
22) L5 AR-1248-2	5.949	4.978	27421301	24711566	381.681	373.510
23) L5 AR-1248-3	6.156	5.020	31155846	30559533	400.939	436.231
24) L5 AR-1248-4	6.562	5.193	9381318	31751005	125.884	397.338 #
25) L5 AR-1248-5	6.602	5.587	8860701	6973707	113.902	101.641
26) L6 AR-1254-1	6.537	5.547	27421446	31321632	307.289	258.970
27) L6 AR-1254-2	6.756	5.696	23872624	23166174	181.025	214.318
28) L6 AR-1254-3	7.127	6.118f	12097572	43435771	88.003	256.828 #
29) L6 AR-1254-4	7.414	6.330	7231843	2456594	88.010	30.783 #
30) L6 AR-1254-5	7.835	6.751	75107180	79179273	729.588	562.023
31) L7 AR-1260-1	7.292	6.233	59838142	66939890	491.651	505.011
32) L7 AR-1260-2	7.551	6.422	67007159	76526519	526.876	518.114
33) L7 AR-1260-3	7.913	6.576	54023067	71465552	522.607	492.940
34) L7 AR-1260-4	8.143	7.052	60690925	63592258	516.905	521.690
35) L7 AR-1260-5	8.473	7.294	109.7E6	136.3E6	559.099	548.737
36) L8 AR-1262-1	7.972	6.844	28102892	32863364	443.989	463.141
37) L8 AR-1262-2	8.473	7.052	109.7E6	63592258	476.133	388.123
38) L8 AR-1262-3	8.809	7.580	71779979	27926710	434.442	230.906 #
39) L8 AR-1262-4	8.872f	7.643	48415599	98237915	358.464	466.166 #
40) L8 AR-1262-5	9.573	8.142	28638608	31237876	392.963	382.630
41) L9 AR-1268-1	8.809	7.580	71779979	27926710	246.475	86.822 #

Data Path : Z:\pestpcbsrv\HPCHEM1\ECD_P\Data\PP020524\
 Data File : PP063269.D
 Signal(s) : Signal #1: ECD1A.ch Signal #2: ECD2B.ch
 Acq On : 05 Feb 2024 14:00
 Operator : YP\AJ
 Sample : AR1660CCC500
 Misc :
 ALS Vial : 9 Sample Multiplier: 1

Instrument :
 ECD_P
 ClientSampleId :
 AR1660CCC500

Integration File signal 1: autoint1.e
 Integration File signal 2: autoint2.e
 Quant Time: Feb 05 20:58:43 2024
 Quant Method : Z:\pestpcbsrv\HPCHEM1\ECD_P\methods\PP020124.M
 Quant Title : GC EXTRACTABLES
 QLast Update : Mon Feb 05 12:13:11 2024
 Response via : Initial Calibration
 Integrator: ChemStation

Volume Inj. : 2 µl
 Signal #1 Phase : ZB-MR1 Signal #2 Phase: ZB-MR2
 Signal #1 Info : 30Mx0.32mmx 0.50µ Signal #2 Info : 30M x 0.32mm x 0.25µm

	Compound	RT#1	RT#2	Resp#1	Resp#2	ng/ml	ng/ml
42)	L9 AR-1268-2	8.872f	7.643	48415599	98237915	191.773	328.741 #
43)	L9 AR-1268-3	9.130	7.854	1660957	1951709	6.968	6.900
44)	L9 AR-1268-4	9.573	8.142	28638608	31237876	370.314	355.837
45)	L9 AR-1268-5	10.007	8.436	9365360	10823984	12.834	12.850

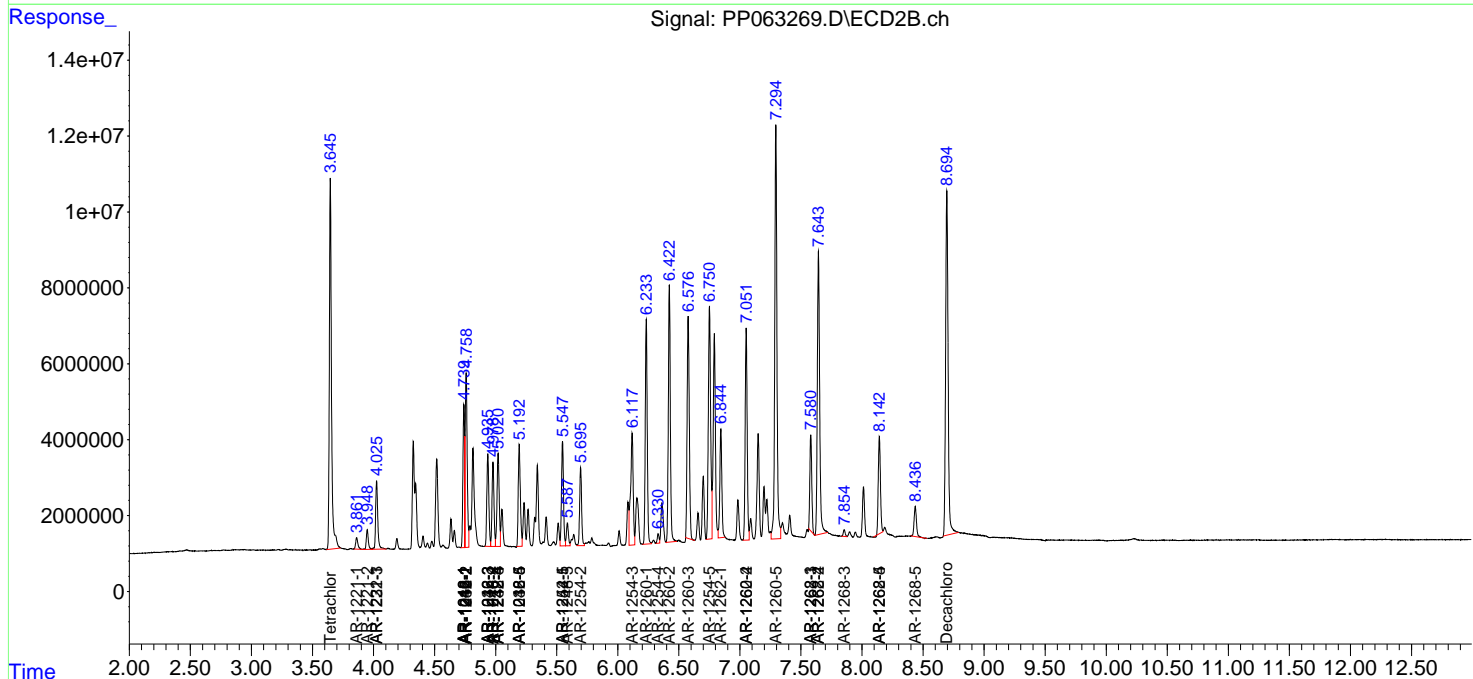
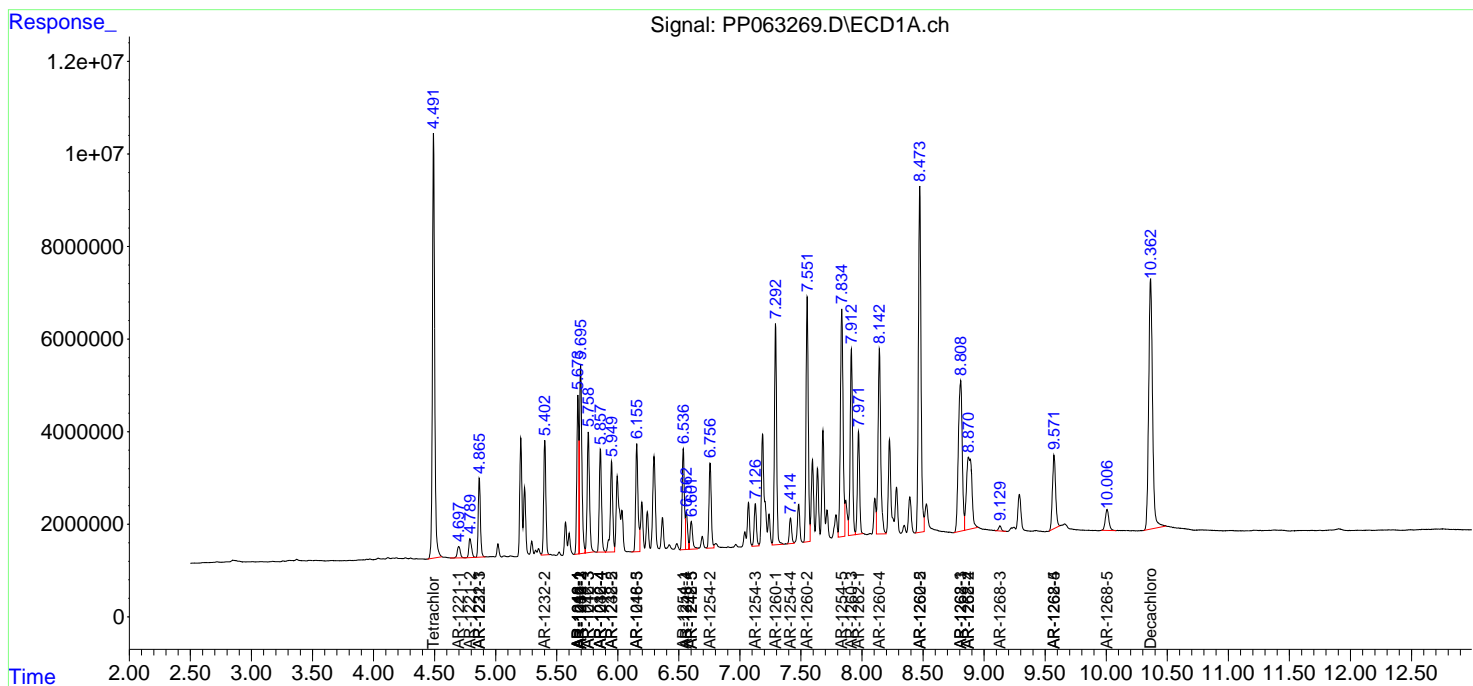
(f)=RT Delta > 1/2 Window (#)=Amounts differ by > 25% (m)=manual int.

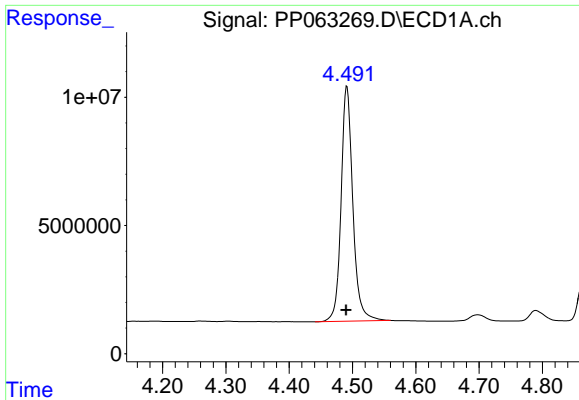
Data Path : Z:\pestpcbsrv\HPCHEM1\ECD_P\Data\PP020524\
 Data File : PP063269.D
 Signal(s) : Signal #1: ECD1A.ch Signal #2: ECD2B.ch
 Acq On : 05 Feb 2024 14:00
 Operator : YP\AJ
 Sample : AR1660CCC500
 Misc :
 ALS Vial : 9 Sample Multiplier: 1

Instrument :
 ECD_P
 ClientSampleId :
 AR1660CCC500

Integration File signal 1: autoint1.e
 Integration File signal 2: autoint2.e
 Quant Time: Feb 05 20:58:43 2024
 Quant Method : Z:\pestpcbsrv\HPCHEM1\ECD_P\methods\PP020124.M
 Quant Title : GC EXTRACTABLES
 QLast Update : Mon Feb 05 12:13:11 2024
 Response via : Initial Calibration
 Integrator: ChemStation

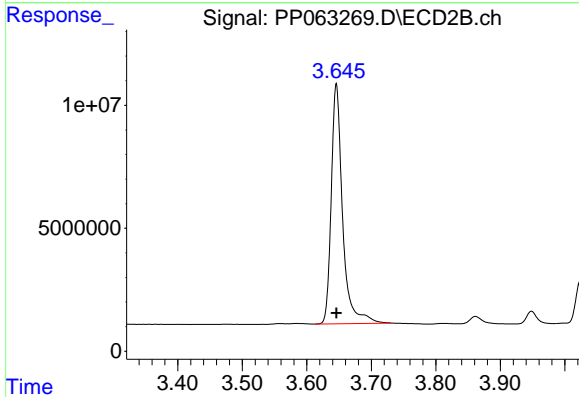
Volume Inj. : 2 µl
 Signal #1 Phase : ZB-MR1 Signal #2 Phase: ZB-MR2
 Signal #1 Info : 30Mx0.32mmx 0.50µ Signal #2 Info : 30M x 0.32mm x 0.25µm



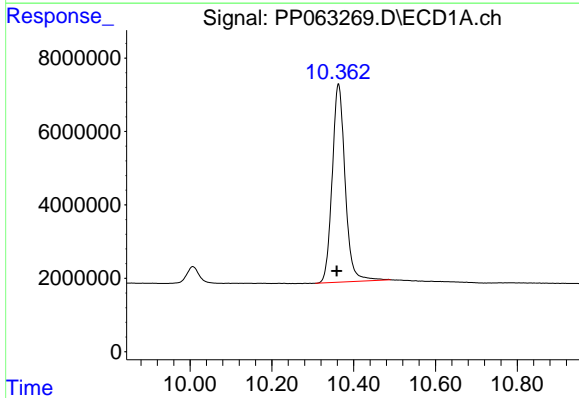


#1 Tetrachloro-m-xylene
 R.T.: 4.491 min
 Delta R.T.: 0.001 min
 Response: 118284504
 Conc: 49.45 ng/ml

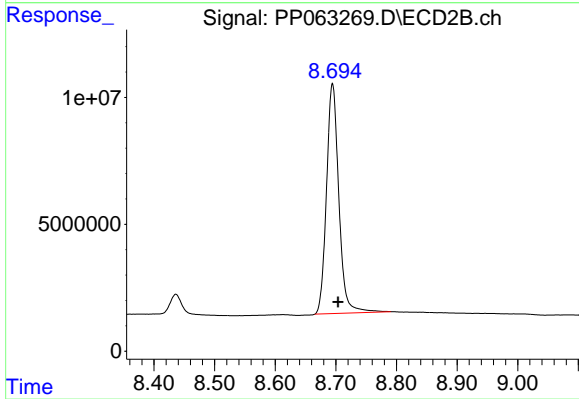
Instrument :
 ECD_P
 ClientSampleId :
 AR1660CCC500



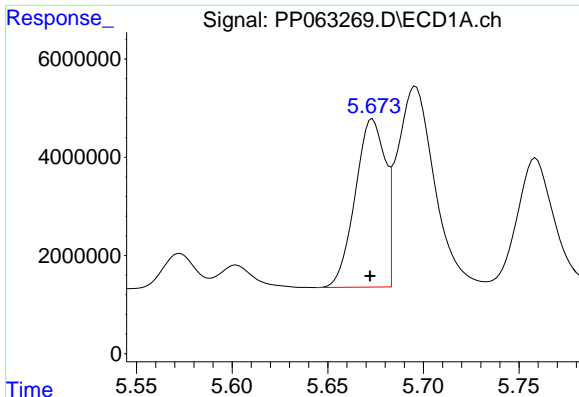
#1 Tetrachloro-m-xylene
 R.T.: 3.646 min
 Delta R.T.: 0.000 min
 Response: 119127446
 Conc: 50.12 ng/ml



#2 Decachlorobiphenyl
 R.T.: 10.363 min
 Delta R.T.: 0.004 min
 Response: 118625908
 Conc: 52.75 ng/ml



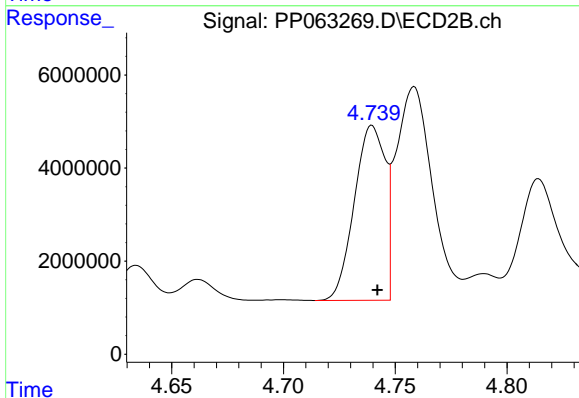
#2 Decachlorobiphenyl
 R.T.: 8.695 min
 Delta R.T.: -0.009 min
 Response: 128058499
 Conc: 51.70 ng/ml



#3 AR-1016-1

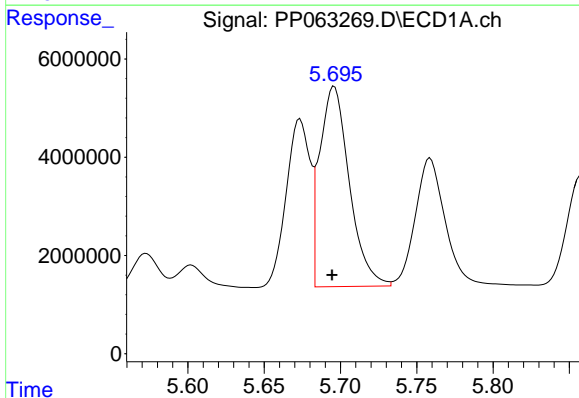
R.T.: 5.673 min
 Delta R.T.: 0.001 min
 Response: 37312442
 Conc: 495.84 ng/ml

Instrument :
 ECD_P
 ClientSampleId :
 AR1660CCC500



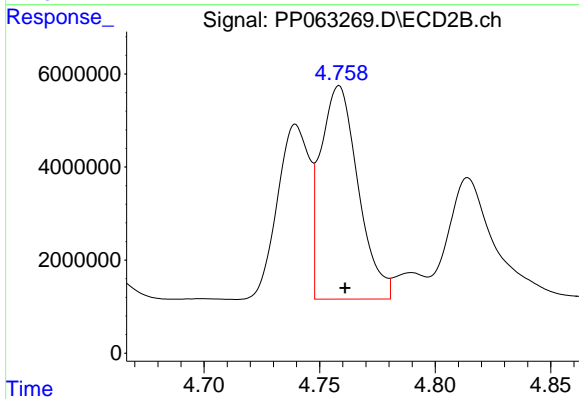
#3 AR-1016-1

R.T.: 4.740 min
 Delta R.T.: -0.002 min
 Response: 36136221
 Conc: 505.12 ng/ml



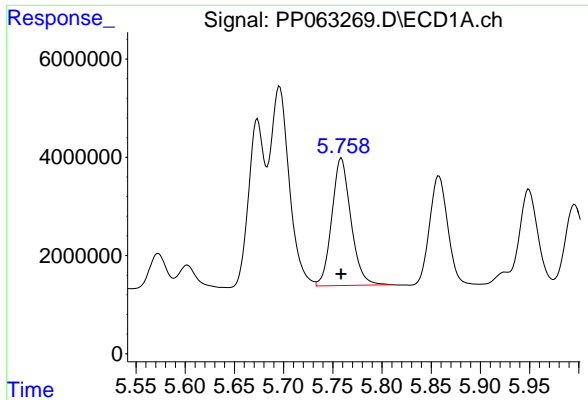
#4 AR-1016-2

R.T.: 5.696 min
 Delta R.T.: 0.001 min
 Response: 55028932
 Conc: 506.66 ng/ml



#4 AR-1016-2

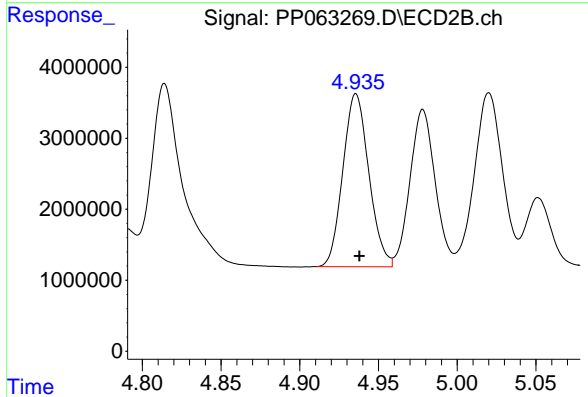
R.T.: 4.758 min
 Delta R.T.: -0.003 min
 Response: 51748283
 Conc: 503.81 ng/ml



#5 AR-1016-3

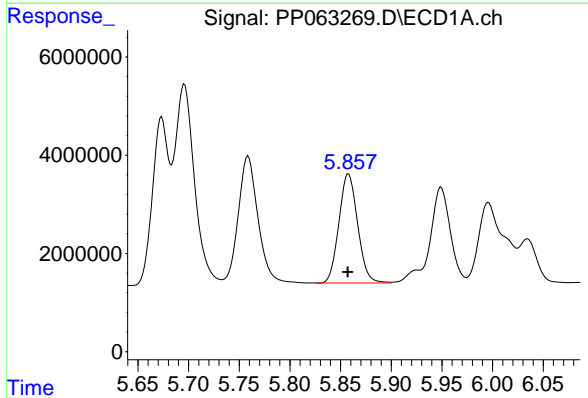
R.T.: 5.759 min
 Delta R.T.: 0.000 min
 Response: 35078681
 Conc: 508.32 ng/ml

Instrument :
 ECD_P
 ClientSampleId :
 AR1660CCC500



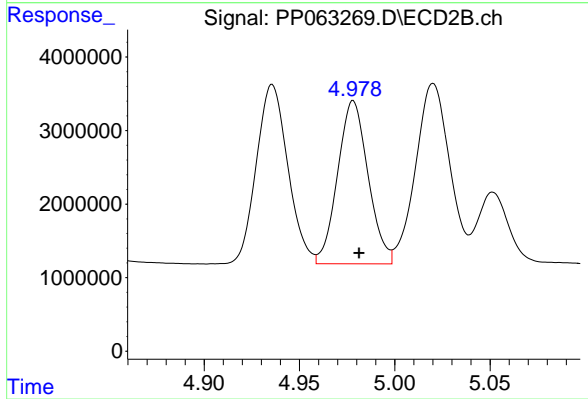
#5 AR-1016-3

R.T.: 4.936 min
 Delta R.T.: -0.002 min
 Response: 27983352
 Conc: 506.04 ng/ml



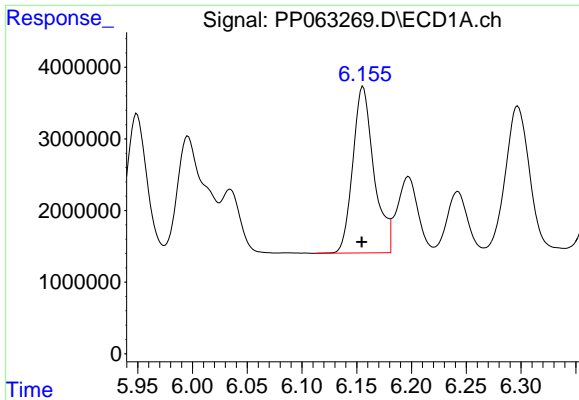
#6 AR-1016-4

R.T.: 5.858 min
 Delta R.T.: 0.000 min
 Response: 28555911
 Conc: 509.90 ng/ml



#6 AR-1016-4

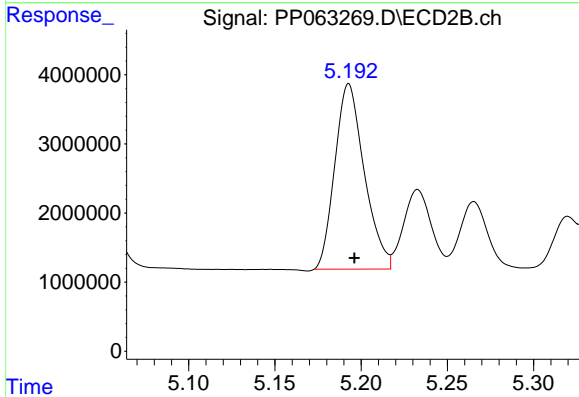
R.T.: 4.978 min
 Delta R.T.: -0.003 min
 Response: 24711566
 Conc: 499.35 ng/ml



#7 AR-1016-5

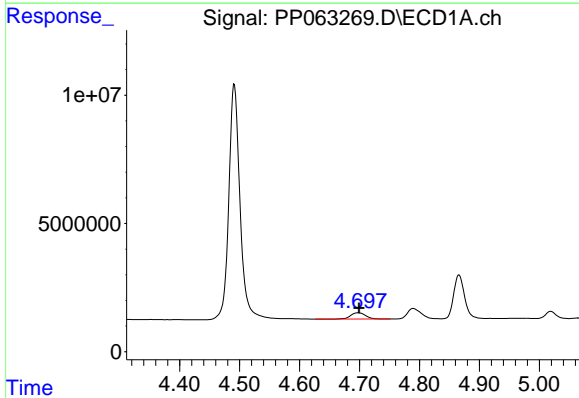
R.T.: 6.156 min
 Delta R.T.: 0.001 min
 Response: 31155846
 Conc: 510.25 ng/ml

Instrument :
 ECD_P
 ClientSampleId :
 AR1660CCC500



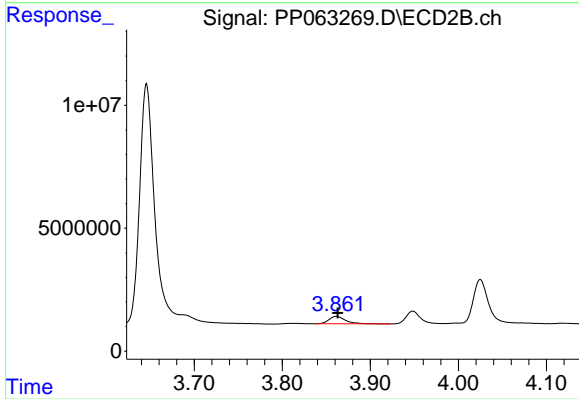
#7 AR-1016-5

R.T.: 5.193 min
 Delta R.T.: -0.003 min
 Response: 31751005
 Conc: 504.74 ng/ml



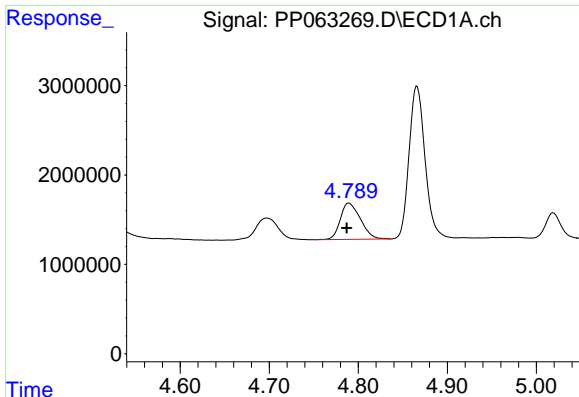
#8 AR-1221-1

R.T.: 4.698 min
 Delta R.T.: -0.002 min
 Response: 4179026
 Conc: 150.19 ng/ml



#8 AR-1221-1

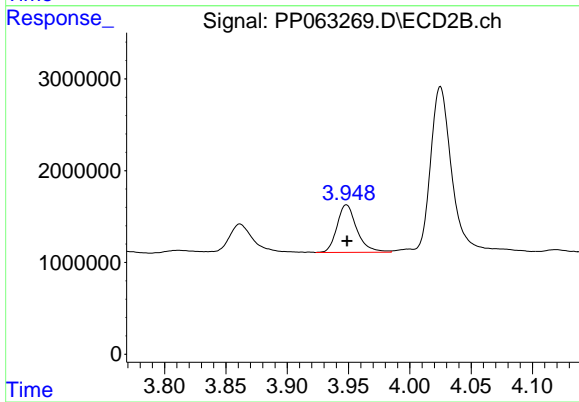
R.T.: 3.861 min
 Delta R.T.: -0.002 min
 Response: 3932232
 Conc: 148.71 ng/ml



#9 AR-1221-2

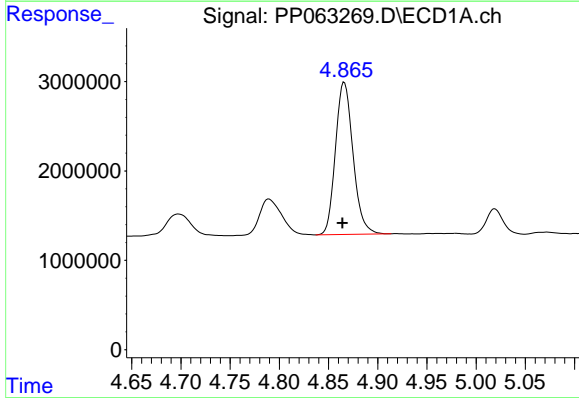
R.T.: 4.790 min
 Delta R.T.: 0.003 min
 Response: 6348600
 Conc: 297.57 ng/ml

Instrument :
 ECD_P
 ClientSampleId :
 AR1660CCC500



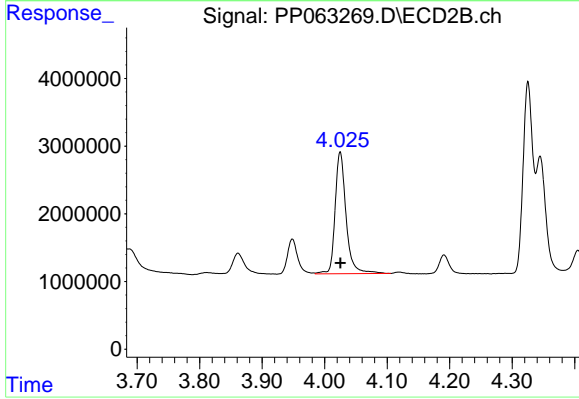
#9 AR-1221-2

R.T.: 3.948 min
 Delta R.T.: 0.000 min
 Response: 5826839
 Conc: 295.00 ng/ml



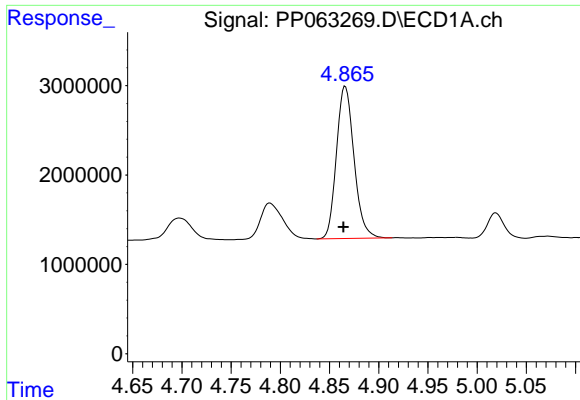
#10 AR-1221-3

R.T.: 4.866 min
 Delta R.T.: 0.002 min
 Response: 21168473
 Conc: 343.64 ng/ml



#10 AR-1221-3

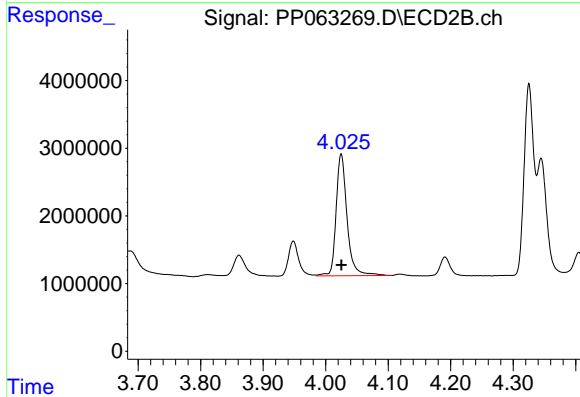
R.T.: 4.025 min
 Delta R.T.: 0.000 min
 Response: 21929321
 Conc: 360.18 ng/ml



#11 AR-1232-1

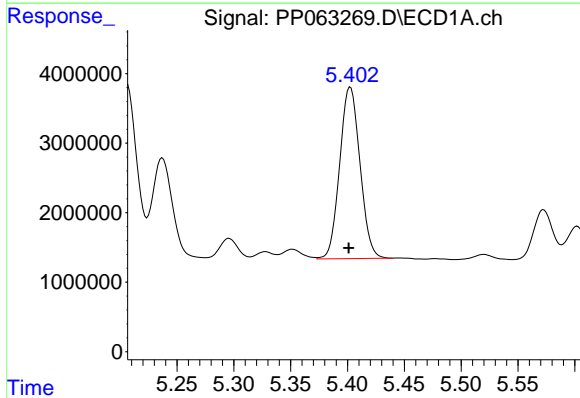
R.T.: 4.866 min
 Delta R.T.: 0.002 min
 Response: 21168473
 Conc: 398.69 ng/ml

Instrument :
 ECD_P
 ClientSampleId :
 AR1660CCC500



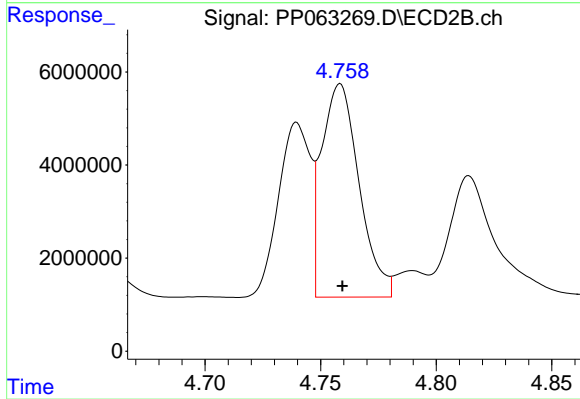
#11 AR-1232-1

R.T.: 4.025 min
 Delta R.T.: 0.000 min
 Response: 21929321
 Conc: 408.01 ng/ml



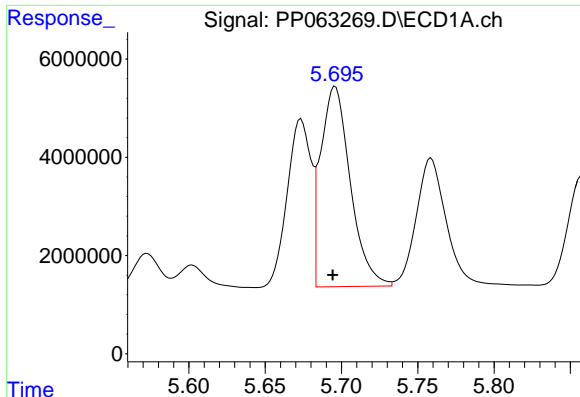
#12 AR-1232-2

R.T.: 5.403 min
 Delta R.T.: 0.001 min
 Response: 30708767
 Conc: 1015.10 ng/ml



#12 AR-1232-2

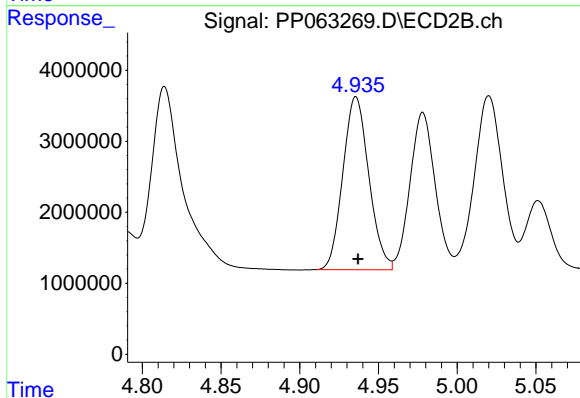
R.T.: 4.758 min
 Delta R.T.: -0.001 min
 Response: 51748283
 Conc: 1079.88 ng/ml



#13 AR-1232-3

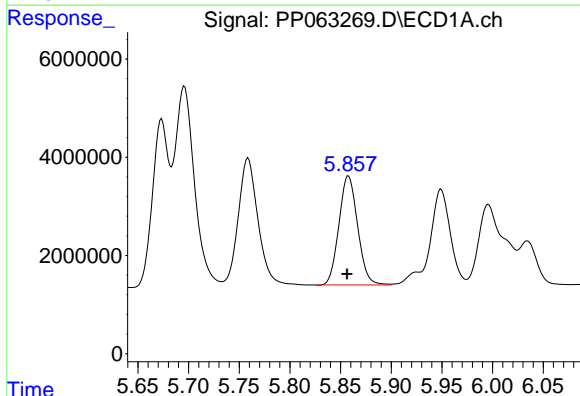
R.T.: 5.696 min
 Delta R.T.: 0.002 min
 Response: 55028932
 Conc: 1079.81 ng/m

Instrument :
 ECD_P
 ClientSampleId :
 AR1660CCC500



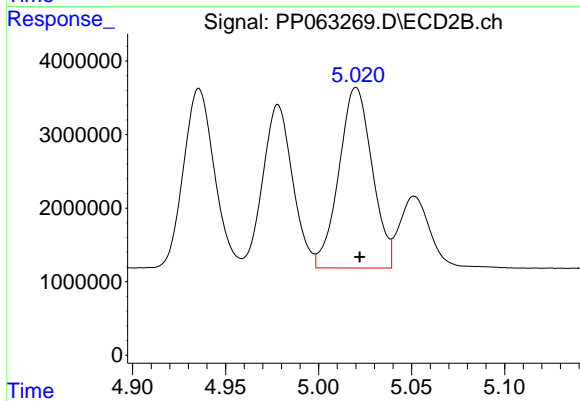
#13 AR-1232-3

R.T.: 4.936 min
 Delta R.T.: -0.001 min
 Response: 27983352
 Conc: 1077.29 ng/ml



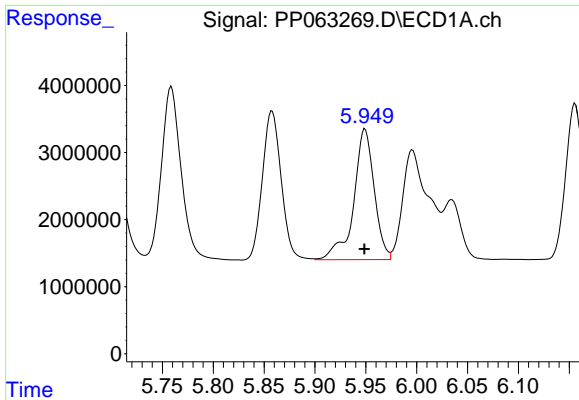
#14 AR-1232-4

R.T.: 5.858 min
 Delta R.T.: 0.001 min
 Response: 28555911
 Conc: 1086.82 ng/ml



#14 AR-1232-4

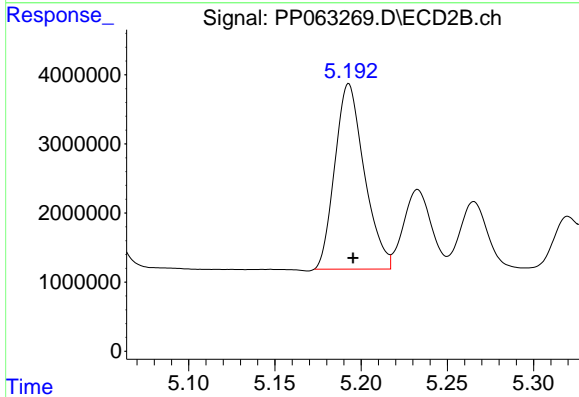
R.T.: 5.020 min
 Delta R.T.: -0.002 min
 Response: 30559533
 Conc: 1172.33 ng/ml



#15 AR-1232-5

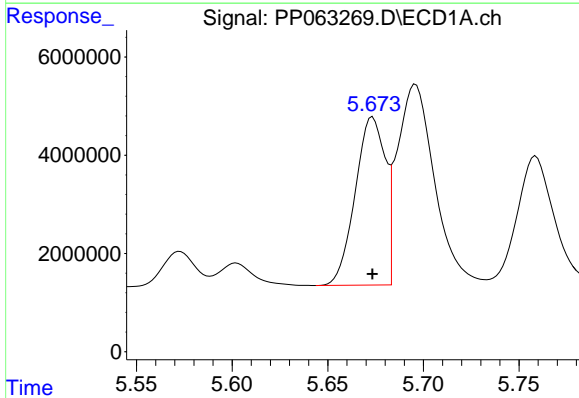
R.T.: 5.949 min
 Delta R.T.: 0.000 min
 Response: 27421301
 Conc: 1189.41 ng/ml

Instrument :
 ECD_P
 ClientSampleId :
 AR1660CCC500



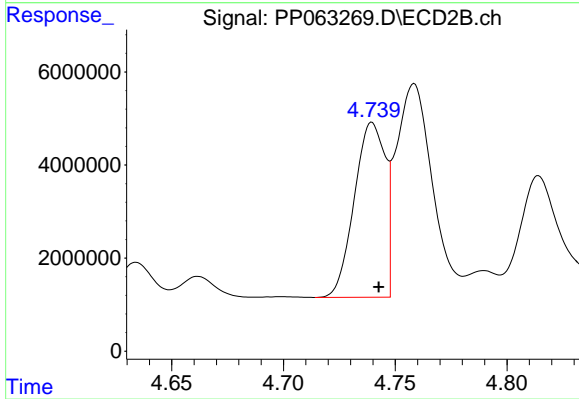
#15 AR-1232-5

R.T.: 5.193 min
 Delta R.T.: -0.002 min
 Response: 31751005
 Conc: 1164.53 ng/ml



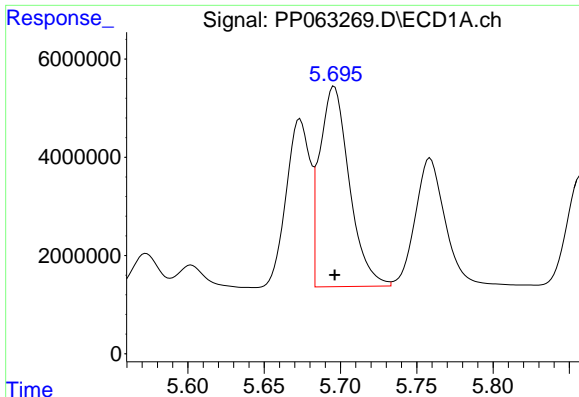
#16 AR-1242-1

R.T.: 5.673 min
 Delta R.T.: 0.000 min
 Response: 37312442
 Conc: 655.30 ng/ml



#16 AR-1242-1

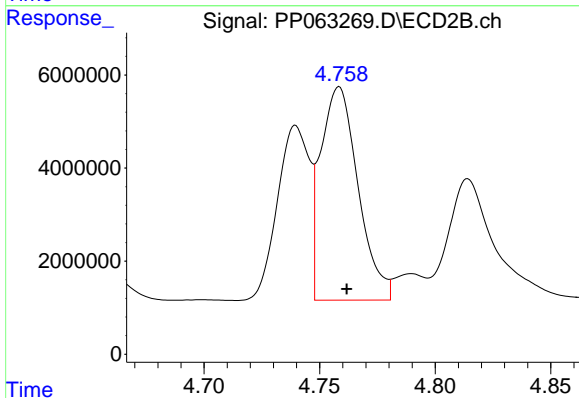
R.T.: 4.740 min
 Delta R.T.: -0.003 min
 Response: 36136221
 Conc: 664.97 ng/ml



#17 AR-1242-2

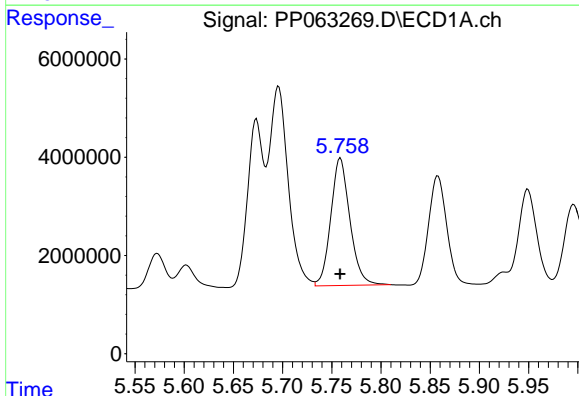
R.T.: 5.696 min
 Delta R.T.: 0.000 min
 Response: 55028932
 Conc: 671.20 ng/ml

Instrument :
 ECD_P
 ClientSampleId :
 AR1660CCC500



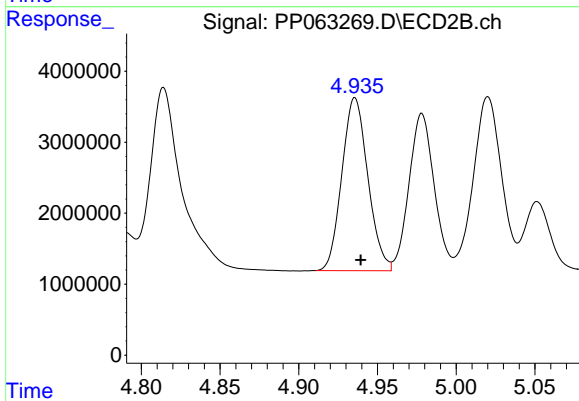
#17 AR-1242-2

R.T.: 4.758 min
 Delta R.T.: -0.003 min
 Response: 51748283
 Conc: 664.44 ng/ml



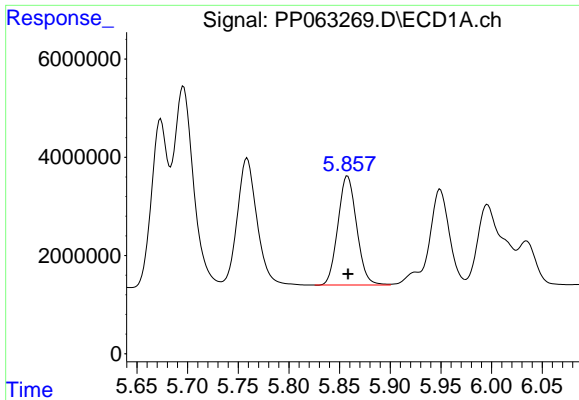
#18 AR-1242-3

R.T.: 5.759 min
 Delta R.T.: 0.000 min
 Response: 35078681
 Conc: 668.43 ng/ml



#18 AR-1242-3

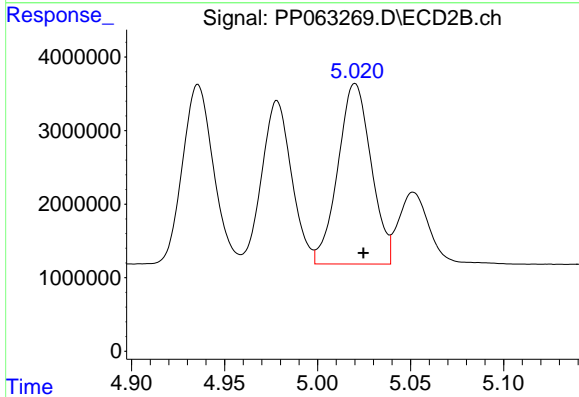
R.T.: 4.936 min
 Delta R.T.: -0.004 min
 Response: 27983352
 Conc: 660.35 ng/ml



#19 AR-1242-4

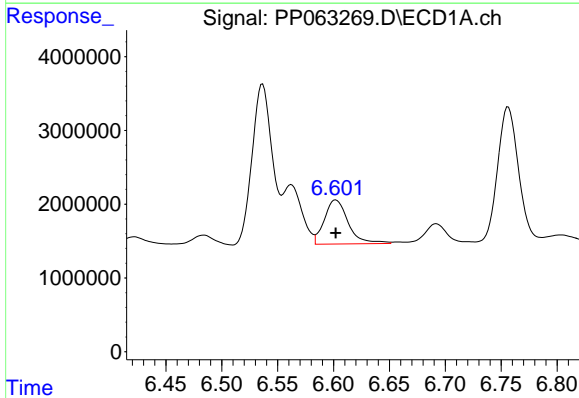
R.T.: 5.858 min
 Delta R.T.: 0.000 min
 Response: 28555911
 Conc: 665.03 ng/ml

Instrument :
 ECD_P
 ClientSampleId :
 AR1660CCC500



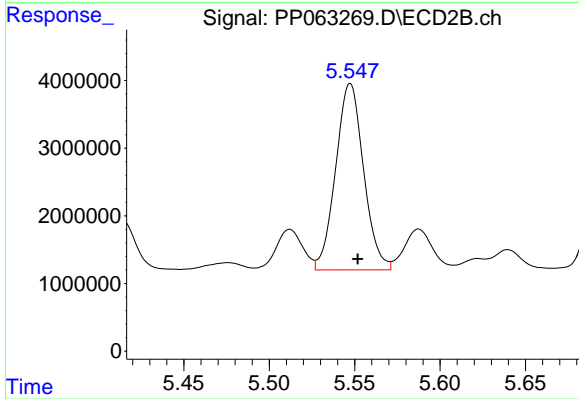
#19 AR-1242-4

R.T.: 5.020 min
 Delta R.T.: -0.004 min
 Response: 30559533
 Conc: 654.34 ng/ml



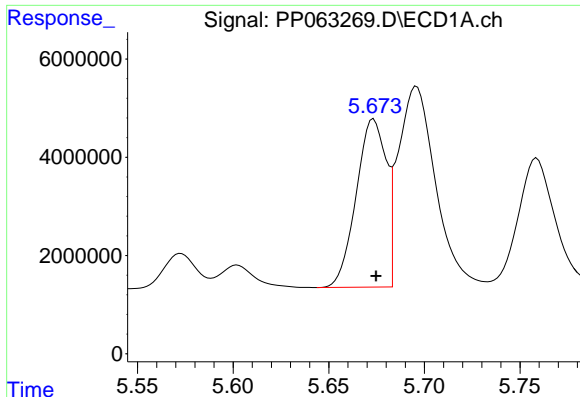
#20 AR-1242-5

R.T.: 6.602 min
 Delta R.T.: 0.000 min
 Response: 8860701
 Conc: 198.68 ng/ml



#20 AR-1242-5

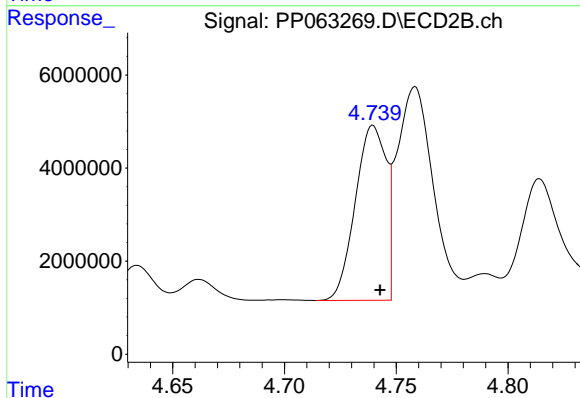
R.T.: 5.547 min
 Delta R.T.: -0.004 min
 Response: 31321632
 Conc: 605.22 ng/ml



#21 AR-1248-1

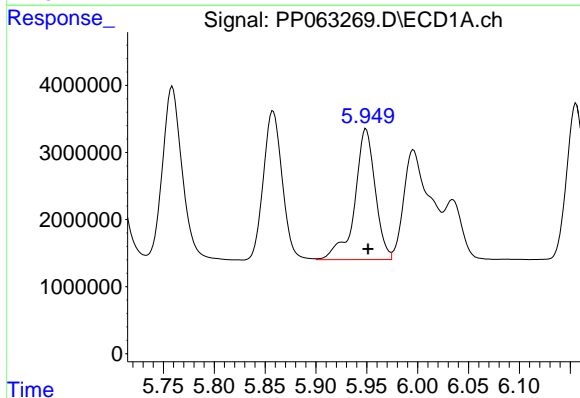
R.T.: 5.673 min
 Delta R.T.: -0.001 min
 Response: 37312442
 Conc: 841.32 ng/ml

Instrument :
 ECD_P
 ClientSampleId :
 AR1660CCC500



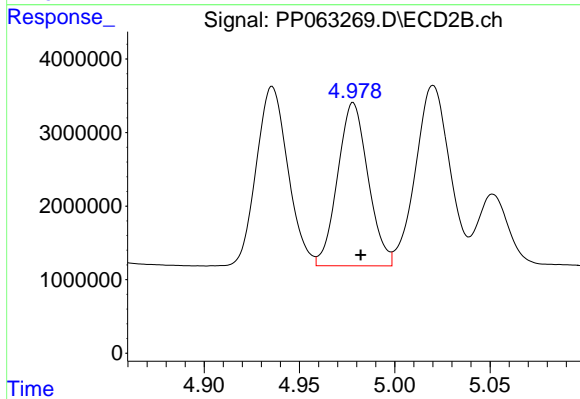
#21 AR-1248-1

R.T.: 4.740 min
 Delta R.T.: -0.003 min
 Response: 36136221
 Conc: 872.25 ng/ml



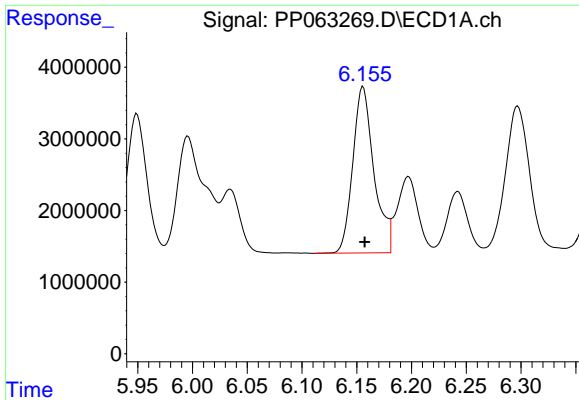
#22 AR-1248-2

R.T.: 5.949 min
 Delta R.T.: -0.002 min
 Response: 27421301
 Conc: 381.68 ng/ml



#22 AR-1248-2

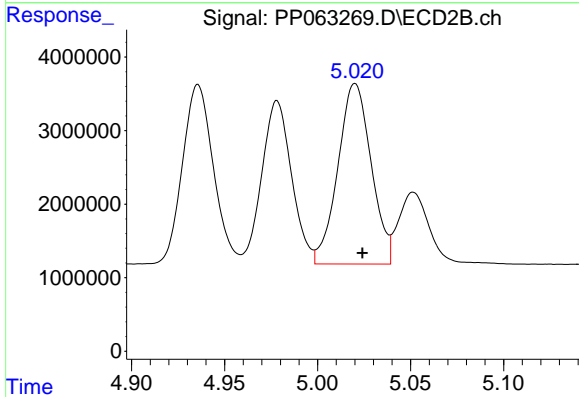
R.T.: 4.978 min
 Delta R.T.: -0.004 min
 Response: 24711566
 Conc: 373.51 ng/ml



#23 AR-1248-3

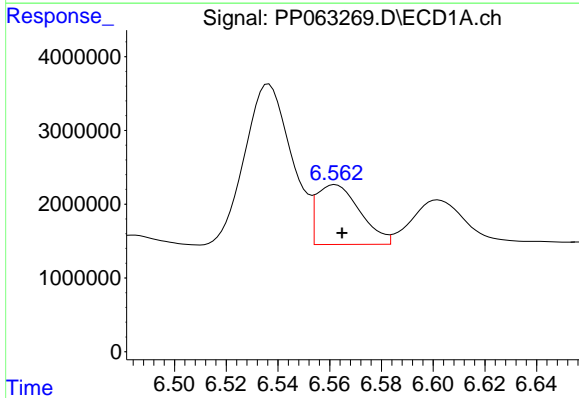
R.T.: 6.156 min
 Delta R.T.: -0.002 min
 Response: 31155846
 Conc: 400.94 ng/ml

Instrument :
 ECD_P
 ClientSampleId :
 AR1660CCC500



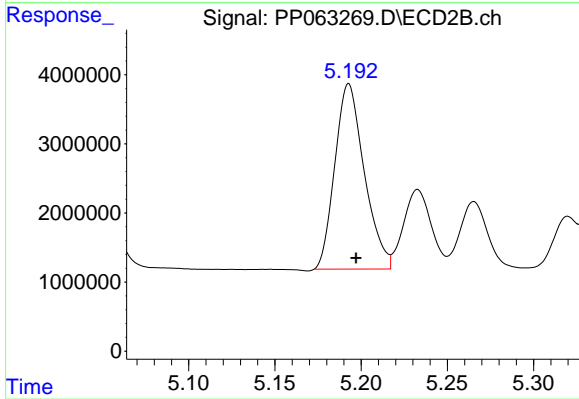
#23 AR-1248-3

R.T.: 5.020 min
 Delta R.T.: -0.004 min
 Response: 30559533
 Conc: 436.23 ng/ml



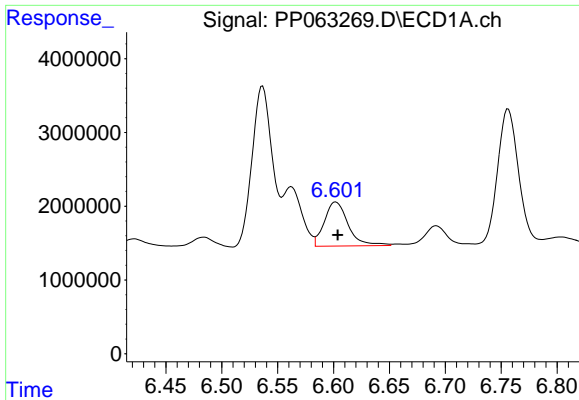
#24 AR-1248-4

R.T.: 6.562 min
 Delta R.T.: -0.003 min
 Response: 9381318
 Conc: 125.88 ng/ml



#24 AR-1248-4

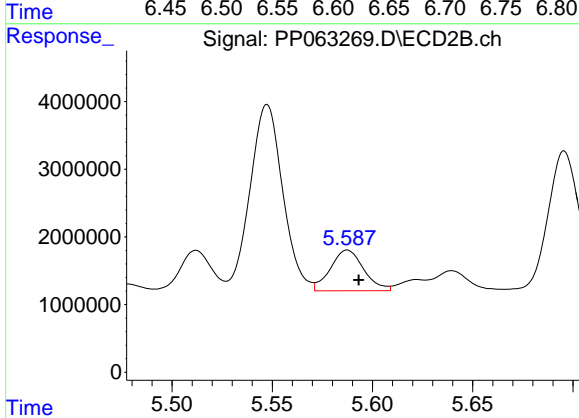
R.T.: 5.193 min
 Delta R.T.: -0.004 min
 Response: 31751005
 Conc: 397.34 ng/ml



#25 AR-1248-5

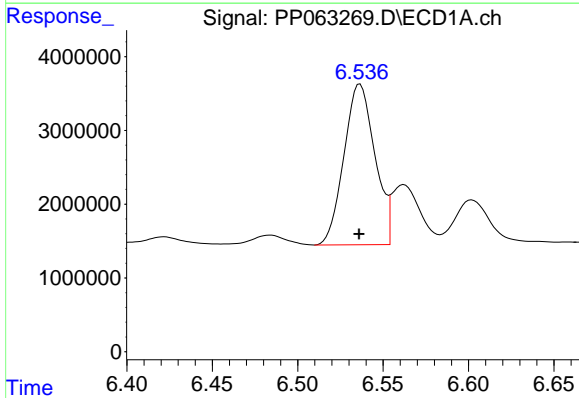
R.T.: 6.602 min
 Delta R.T.: -0.002 min
 Response: 8860701
 Conc: 113.90 ng/ml

Instrument :
 ECD_P
 ClientSampleId :
 AR1660CCC500



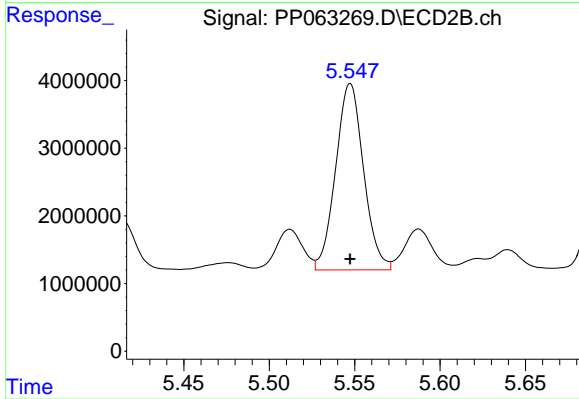
#25 AR-1248-5

R.T.: 5.587 min
 Delta R.T.: -0.006 min
 Response: 6973707
 Conc: 101.64 ng/ml



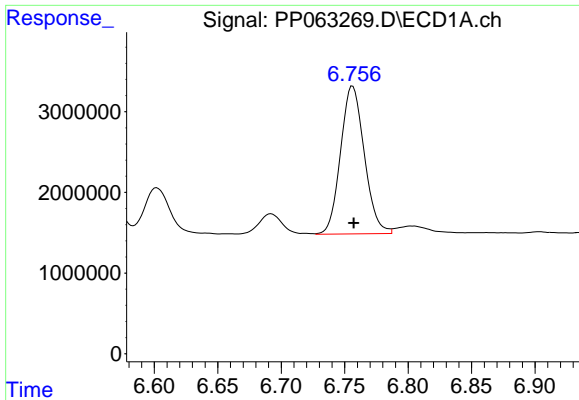
#26 AR-1254-1

R.T.: 6.537 min
 Delta R.T.: 0.000 min
 Response: 27421446
 Conc: 307.29 ng/ml



#26 AR-1254-1

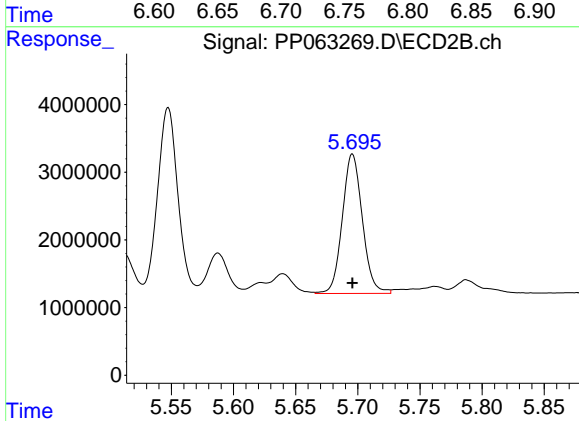
R.T.: 5.547 min
 Delta R.T.: 0.000 min
 Response: 31321632
 Conc: 258.97 ng/ml



#27 AR-1254-2

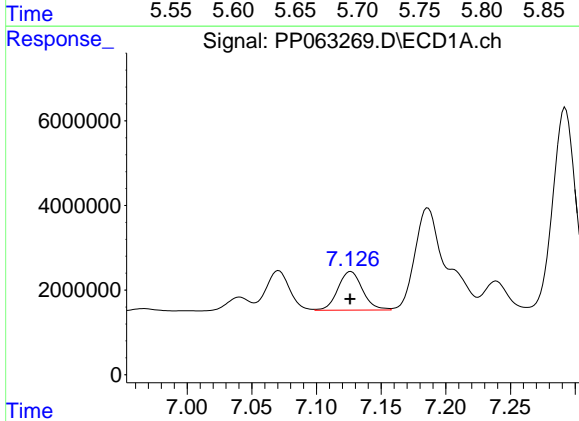
R.T.: 6.756 min
 Delta R.T.: 0.000 min
 Response: 23872624
 Conc: 181.03 ng/ml

Instrument :
 ECD_P
 ClientSampleId :
 AR1660CCC500



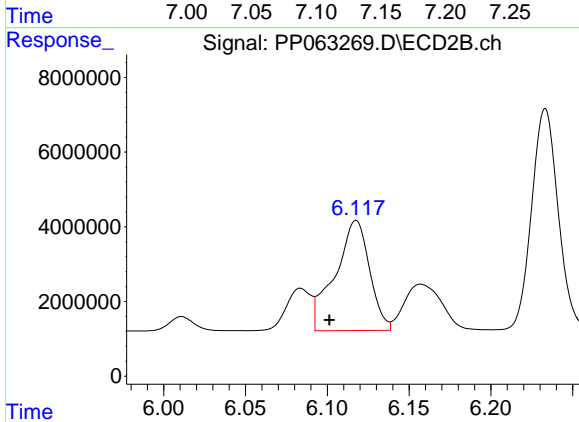
#27 AR-1254-2

R.T.: 5.696 min
 Delta R.T.: 0.000 min
 Response: 23166174
 Conc: 214.32 ng/ml



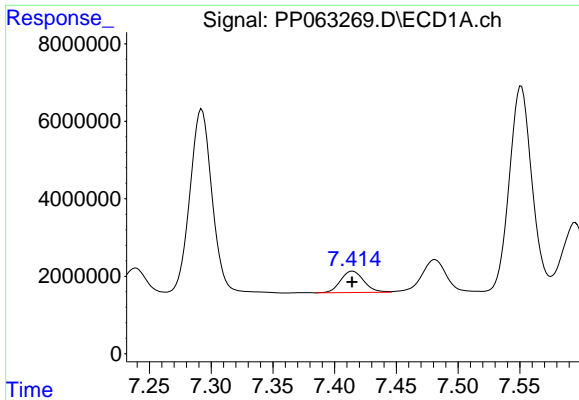
#28 AR-1254-3

R.T.: 7.127 min
 Delta R.T.: 0.000 min
 Response: 12097572
 Conc: 88.00 ng/ml



#28 AR-1254-3

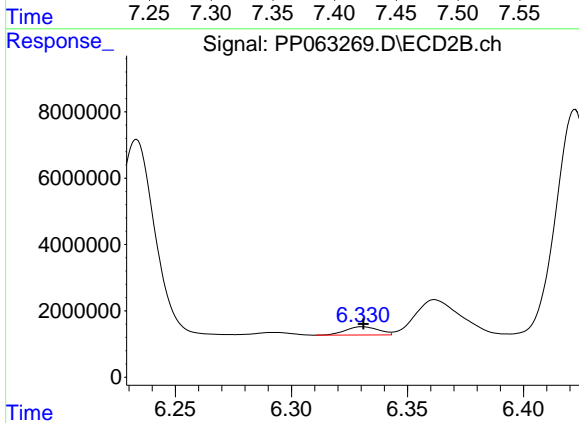
R.T.: 6.118 min
 Delta R.T.: 0.016 min
 Response: 43435771
 Conc: 256.83 ng/ml



#29 AR-1254-4

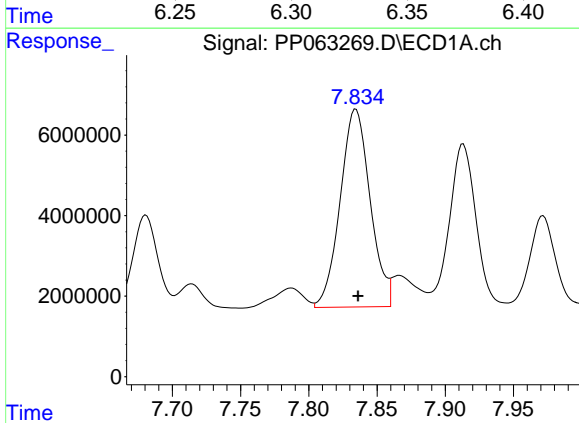
R.T.: 7.414 min
 Delta R.T.: 0.000 min
 Response: 7231843
 Conc: 88.01 ng/ml

Instrument :
 ECD_P
 ClientSampleId :
 AR1660CCC500



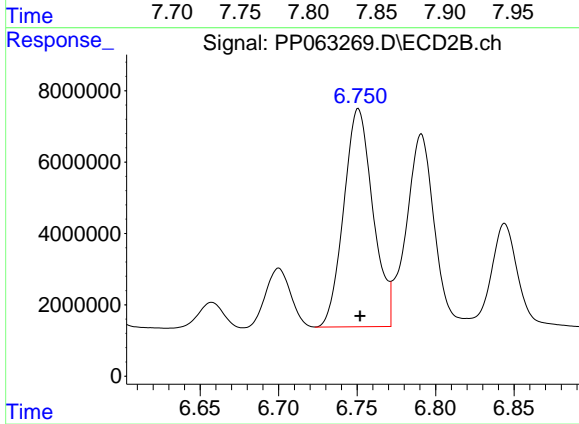
#29 AR-1254-4

R.T.: 6.330 min
 Delta R.T.: 0.000 min
 Response: 2456594
 Conc: 30.78 ng/ml



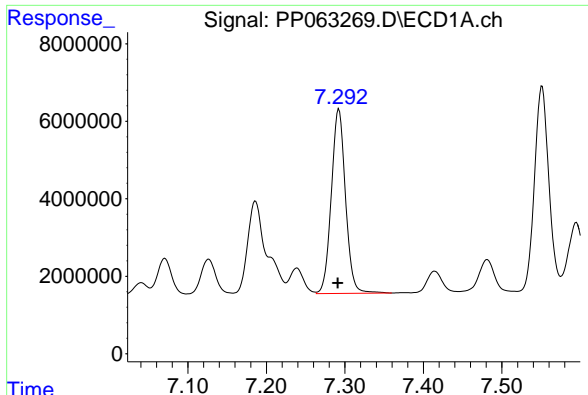
#30 AR-1254-5

R.T.: 7.835 min
 Delta R.T.: -0.002 min
 Response: 75107180
 Conc: 729.59 ng/ml



#30 AR-1254-5

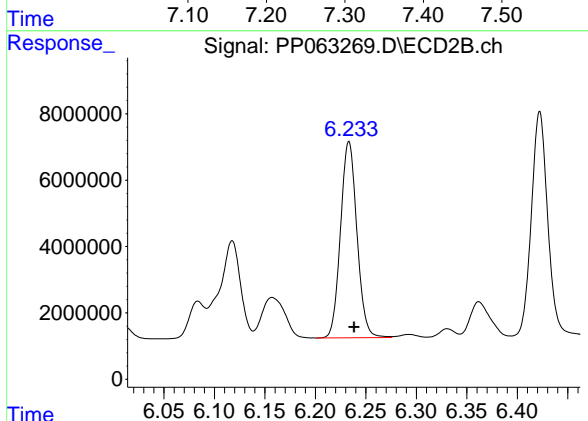
R.T.: 6.751 min
 Delta R.T.: -0.001 min
 Response: 79179273
 Conc: 562.02 ng/ml



#31 AR-1260-1

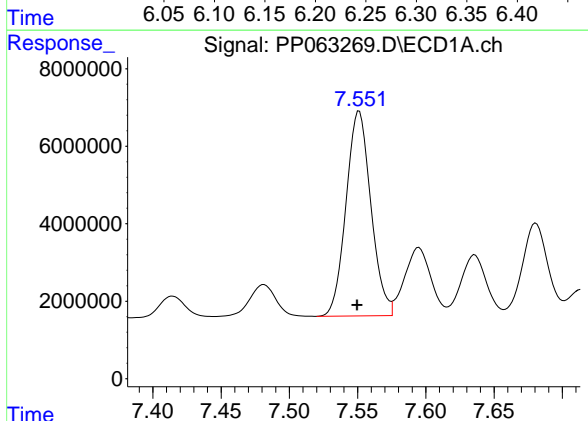
R.T.: 7.292 min
 Delta R.T.: 0.001 min
 Response: 59838142
 Conc: 491.65 ng/ml

Instrument :
 ECD_P
 ClientSampleId :
 AR1660CCC500



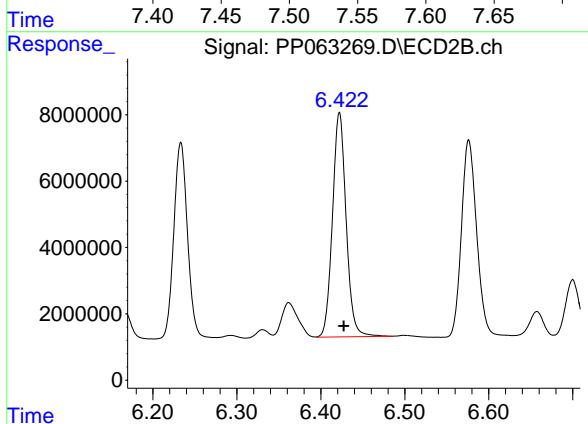
#31 AR-1260-1

R.T.: 6.233 min
 Delta R.T.: -0.005 min
 Response: 66939890
 Conc: 505.01 ng/ml



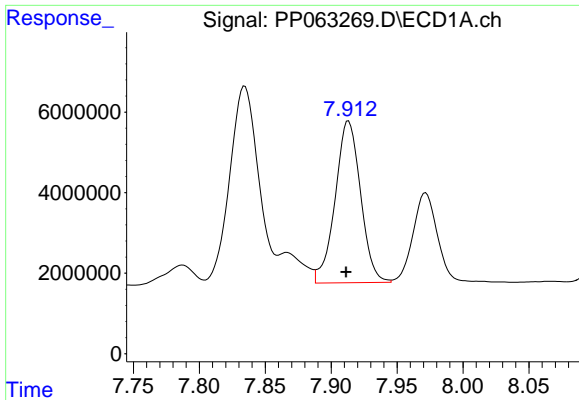
#32 AR-1260-2

R.T.: 7.551 min
 Delta R.T.: 0.001 min
 Response: 67007159
 Conc: 526.88 ng/ml



#32 AR-1260-2

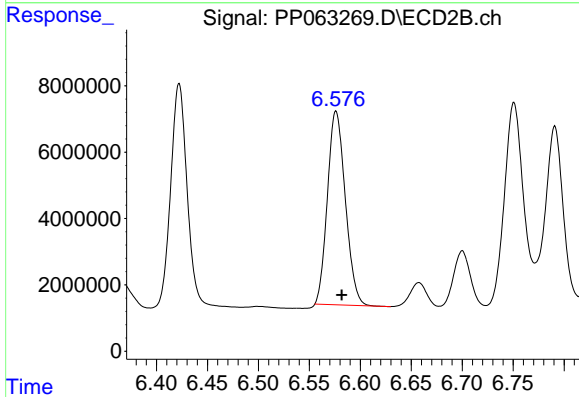
R.T.: 6.422 min
 Delta R.T.: -0.005 min
 Response: 76526519
 Conc: 518.11 ng/ml



#33 AR-1260-3

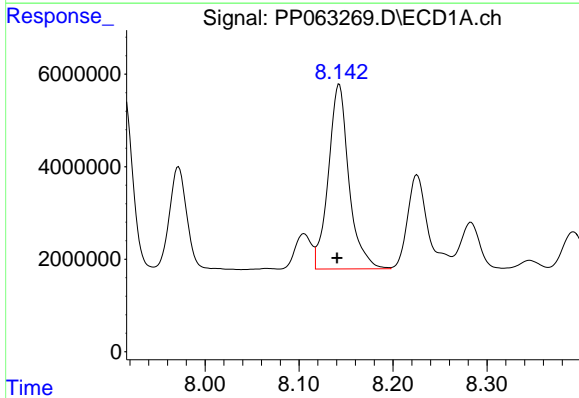
R.T.: 7.913 min
 Delta R.T.: 0.002 min
 Response: 54023067
 Conc: 522.61 ng/ml

Instrument :
 ECD_P
 ClientSampleId :
 AR1660CCC500



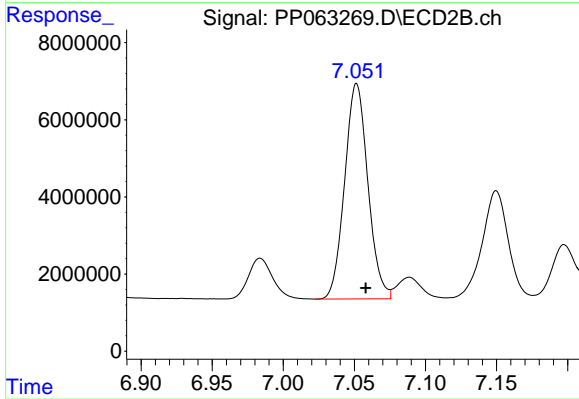
#33 AR-1260-3

R.T.: 6.576 min
 Delta R.T.: -0.006 min
 Response: 71465552
 Conc: 492.94 ng/ml



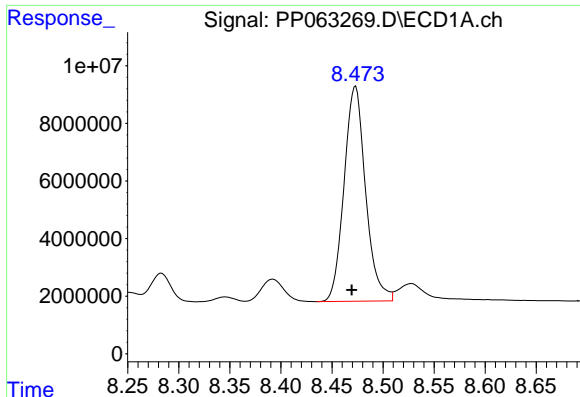
#34 AR-1260-4

R.T.: 8.143 min
 Delta R.T.: 0.002 min
 Response: 60690925
 Conc: 516.91 ng/ml



#34 AR-1260-4

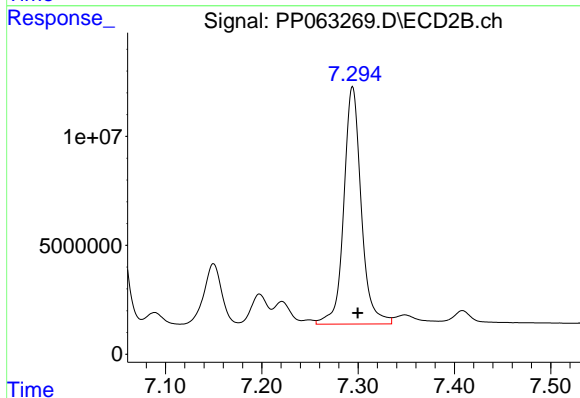
R.T.: 7.052 min
 Delta R.T.: -0.007 min
 Response: 63592258
 Conc: 521.69 ng/ml



#35 AR-1260-5

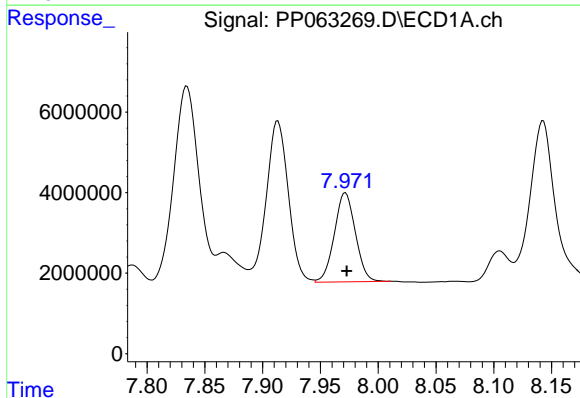
R.T.: 8.473 min
Delta R.T.: 0.004 min
Response: 109722956
Conc: 559.10 ng/ml

Instrument :
ECD_P
ClientSampleId :
AR1660CCC500



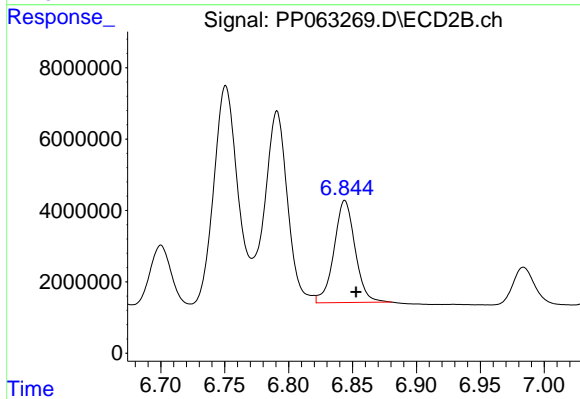
#35 AR-1260-5

R.T.: 7.294 min
Delta R.T.: -0.006 min
Response: 136334727
Conc: 548.74 ng/ml



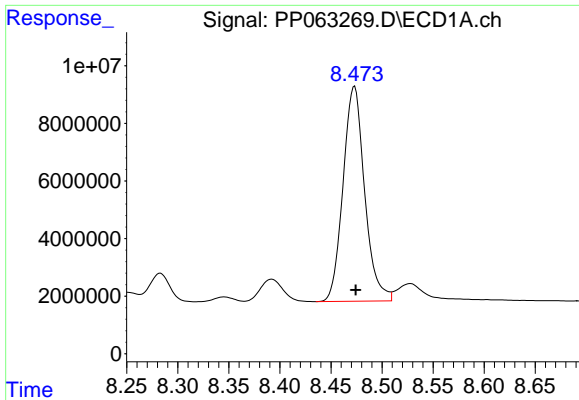
#36 AR-1262-1

R.T.: 7.972 min
Delta R.T.: -0.001 min
Response: 28102892
Conc: 443.99 ng/ml



#36 AR-1262-1

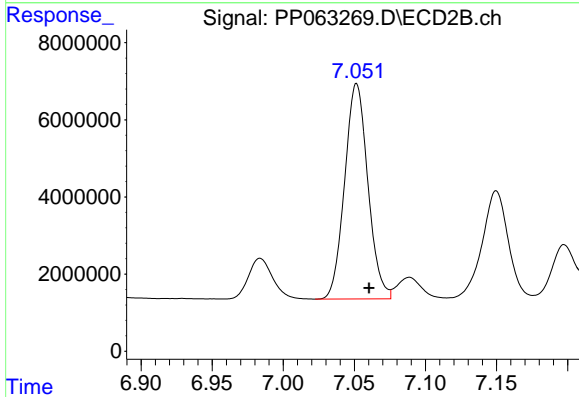
R.T.: 6.844 min
Delta R.T.: -0.009 min
Response: 32863364
Conc: 463.14 ng/ml



#37 AR-1262-2

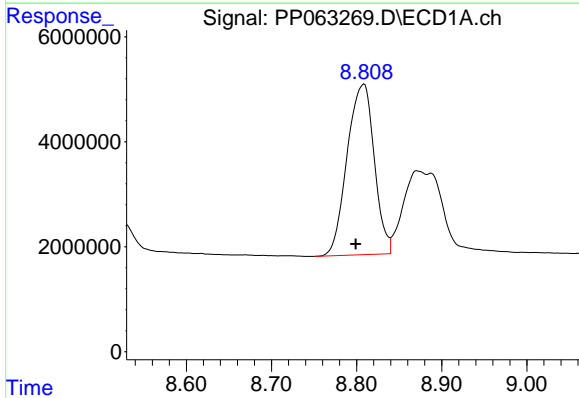
R.T.: 8.473 min
 Delta R.T.: -0.001 min
 Response: 109722956
 Conc: 476.13 ng/ml

Instrument :
 ECD_P
 ClientSampleId :
 AR1660CCC500



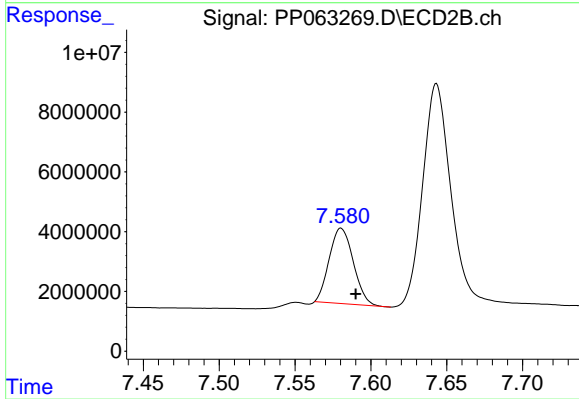
#37 AR-1262-2

R.T.: 7.052 min
 Delta R.T.: -0.009 min
 Response: 63592258
 Conc: 388.12 ng/ml



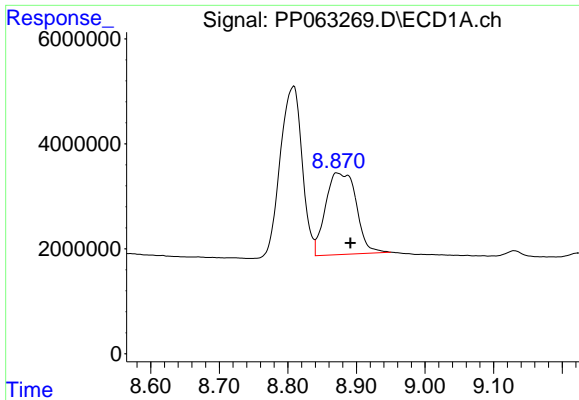
#38 AR-1262-3

R.T.: 8.809 min
 Delta R.T.: 0.010 min
 Response: 71779979
 Conc: 434.44 ng/ml



#38 AR-1262-3

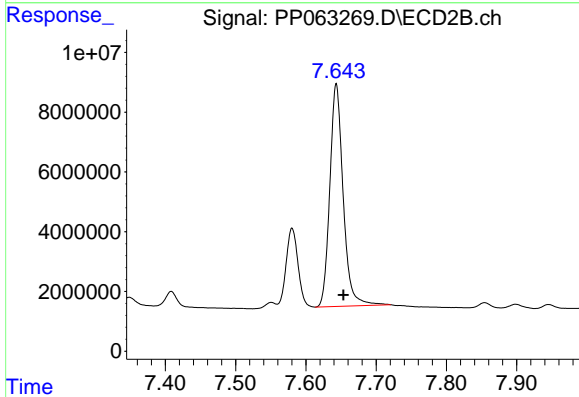
R.T.: 7.580 min
 Delta R.T.: -0.010 min
 Response: 27926710
 Conc: 230.91 ng/ml



#39 AR-1262-4

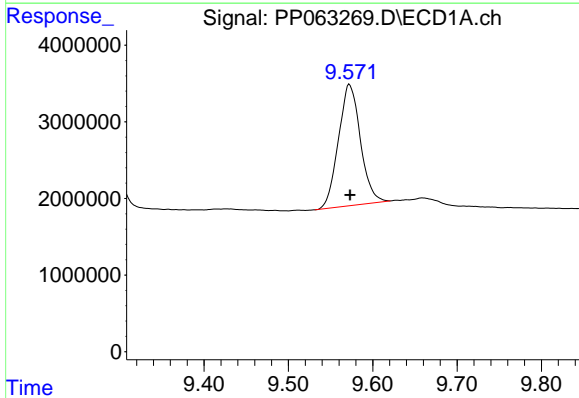
R.T.: 8.872 min
 Delta R.T.: -0.019 min
 Response: 48415599
 Conc: 358.46 ng/ml

Instrument :
 ECD_P
 ClientSampleId :
 AR1660CCC500



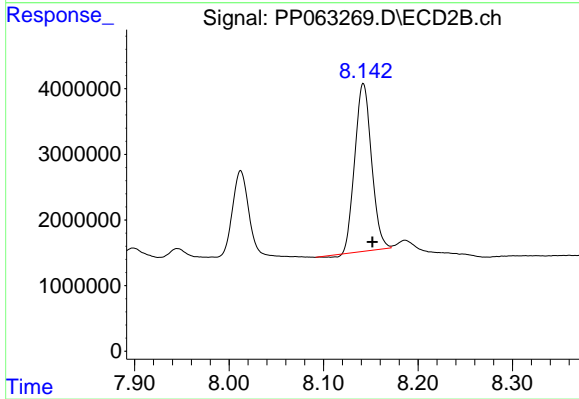
#39 AR-1262-4

R.T.: 7.643 min
 Delta R.T.: -0.010 min
 Response: 98237915
 Conc: 466.17 ng/ml



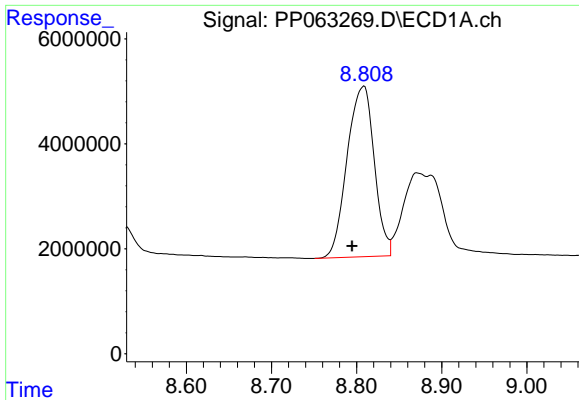
#40 AR-1262-5

R.T.: 9.573 min
 Delta R.T.: 0.000 min
 Response: 28638608
 Conc: 392.96 ng/ml



#40 AR-1262-5

R.T.: 8.142 min
 Delta R.T.: -0.010 min
 Response: 31237876
 Conc: 382.63 ng/ml

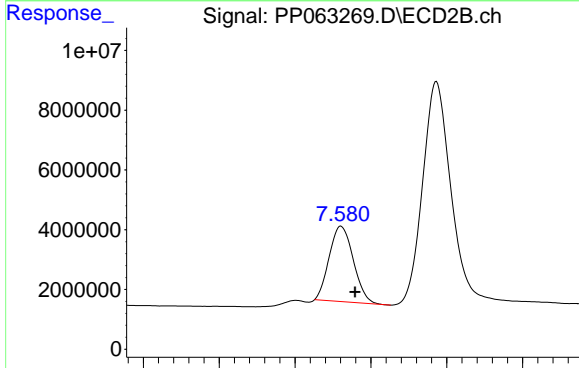


#41 AR-1268-1

R.T.: 8.809 min
 Delta R.T.: 0.014 min
 Response: 71779979
 Conc: 246.48 ng/ml

Instrument :
 ECD_P
 ClientSampleId :
 AR1660CCC500

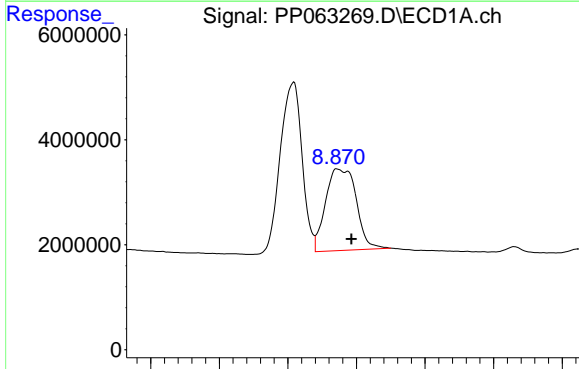
Time 8.60 8.70 8.80 8.90 9.00



#41 AR-1268-1

R.T.: 7.580 min
 Delta R.T.: -0.009 min
 Response: 27926710
 Conc: 86.82 ng/ml

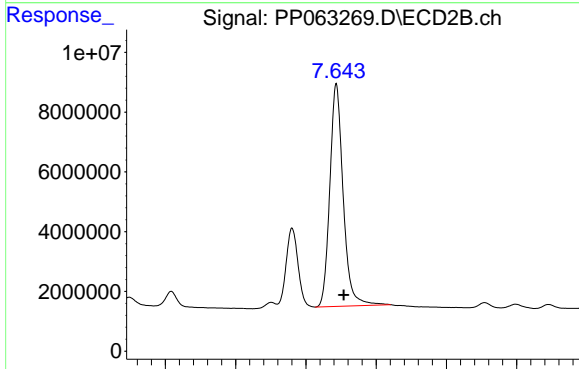
Time 7.45 7.50 7.55 7.60 7.65 7.70



#42 AR-1268-2

R.T.: 8.872 min
 Delta R.T.: -0.020 min
 Response: 48415599
 Conc: 191.77 ng/ml

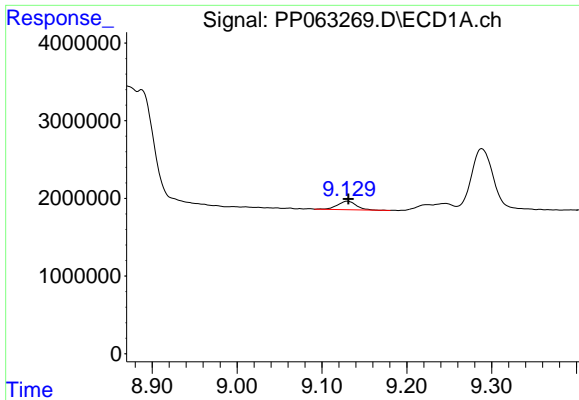
Time 8.60 8.70 8.80 8.90 9.00 9.10



#42 AR-1268-2

R.T.: 7.643 min
 Delta R.T.: -0.011 min
 Response: 98237915
 Conc: 328.74 ng/ml

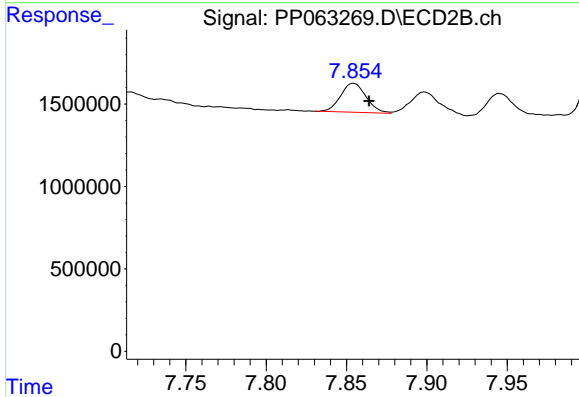
Time 7.40 7.50 7.60 7.70 7.80 7.90



#43 AR-1268-3

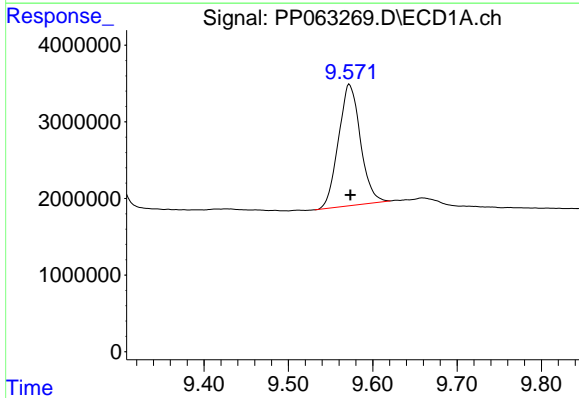
R.T.: 9.130 min
 Delta R.T.: -0.001 min
 Response: 1660957
 Conc: 6.97 ng/ml

Instrument :
 ECD_P
 ClientSampleId :
 AR1660CCC500



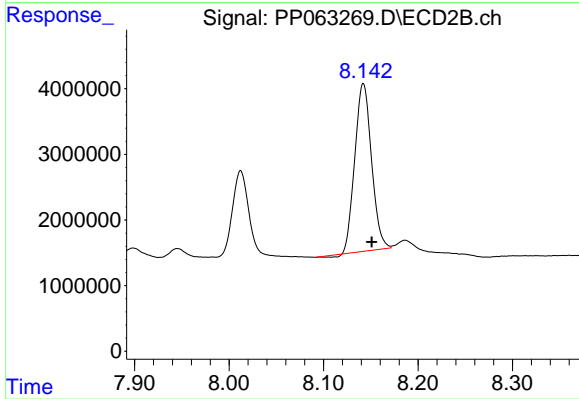
#43 AR-1268-3

R.T.: 7.854 min
 Delta R.T.: -0.010 min
 Response: 1951709
 Conc: 6.90 ng/ml



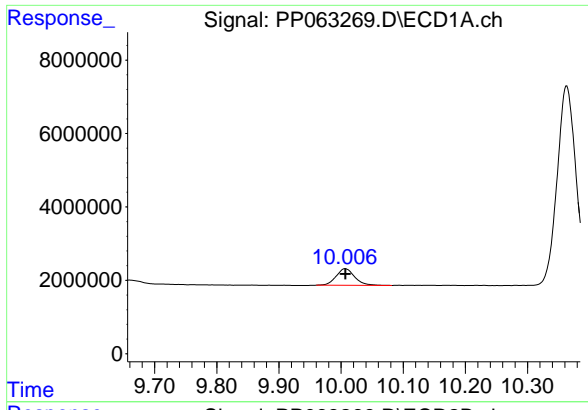
#44 AR-1268-4

R.T.: 9.573 min
 Delta R.T.: 0.000 min
 Response: 28638608
 Conc: 370.31 ng/ml



#44 AR-1268-4

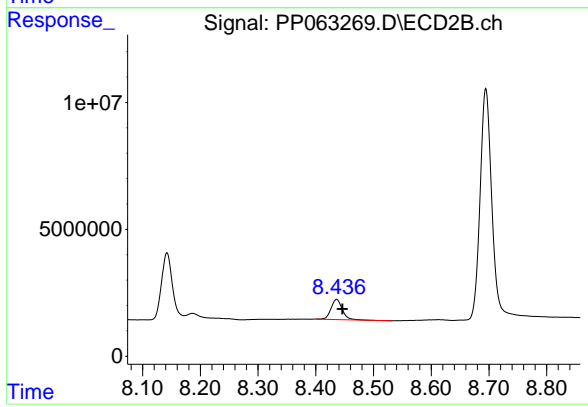
R.T.: 8.142 min
 Delta R.T.: -0.009 min
 Response: 31237876
 Conc: 355.84 ng/ml



#45 AR-1268-5

R.T.: 10.007 min
Delta R.T.: 0.000 min
Response: 9365360
Conc: 12.83 ng/ml

Instrument :
ECD_P
ClientSampleId :
AR1660CCC500



#45 AR-1268-5

R.T.: 8.436 min
Delta R.T.: -0.010 min
Response: 10823984
Conc: 12.85 ng/ml