

Data Path : Z:\pestpcbsrv\HPCHEM1\ECD_P\Data\PP020525\
 Data File : PP069522.D
 Signal(s) : Signal #1: ECD1A.ch Signal #2: ECD2B.ch
 Acq On : 05 Feb 2025 21:50
 Operator : YP\AJ
 Sample : I.BLK
 Misc :
 ALS Vial : 2 Sample Multiplier: 1

Instrument :
 ECD_P
 ClientSampleId :

Integration File signal 1: autoint1.e
 Integration File signal 2: autoint2.e
 Quant Time: Feb 06 02:28:02 2025
 Quant Method : Z:\pestpcbsrv\HPCHEM1\ECD_P\methods\PP012825.M
 Quant Title : GC EXTRACTABLES
 QLast Update : Wed Jan 29 00:13:21 2025
 Response via : Initial Calibration
 Integrator: ChemStation

Volume Inj. : 2 µl
 Signal #1 Phase : ZB-MR2 Signal #2 Phase: ZB-MR2
 Signal #1 Info : 30Mx0.32mmx 0.50µ Signal #2 Info : 30M x 0.32mm x 0.25µm

Compound	RT#1	RT#2	Resp#1	Resp#2	ng/ml	ng/ml
System Monitoring Compounds						
1) SA Tetrachlo...	4.533	3.837	34921383	22161855	24.395	24.830
2) SA Decachlor...	10.263	8.899	25720526	24335437	23.534	21.758
Target Compounds						
3) L1 AR-1016-1	0.000	4.877f	0	13188	N.D.	0.404 #
5) L1 AR-1016-3	0.000	5.166f	0	63808	N.D.	2.564 #
6) L1 AR-1016-4	0.000	5.166	0	63808	N.D.	3.159 #
7) L1 AR-1016-5	0.000	5.386	0	183157	N.D.	6.828 #
8) L2 AR-1221-1	0.000	4.000f	0	21840	N.D.	1.773 #
9) L2 AR-1221-2	4.836	4.140	569753	278480	41.611	28.759 #
10) L2 AR-1221-3	4.836f	4.203	569753	29652	13.584	1.016 #
11) L3 AR-1232-1	4.836f	4.203	569753	29652	17.113	1.263 #
13) L3 AR-1232-3	0.000	5.166f	0	63808	N.D.	4.928 #
14) L3 AR-1232-4	0.000	5.182	0	186308	N.D.	16.805 #
15) L3 AR-1232-5	0.000	5.386	0	183157	N.D.	15.000 #
16) L4 AR-1242-1	0.000	4.877f	0	13188	N.D.	0.457 #
18) L4 AR-1242-3	0.000	5.166f	0	63808	N.D.	2.835 #
19) L4 AR-1242-4	0.000	5.182	0	186308	N.D.	8.632 #
20) L4 AR-1242-5	0.000	5.764	0	296584	N.D.	10.309 #
21) L5 AR-1248-1	5.621f	4.877f	1426433	13188	43.973	0.599 #
22) L5 AR-1248-2	0.000	5.166	0	63808	N.D.	2.122 #
23) L5 AR-1248-3	0.000	5.182	0	186308	N.D.	6.013 #
24) L5 AR-1248-4	0.000	5.386	0	183157	N.D.	4.958 #
25) L5 AR-1248-5	0.000	5.764	0	296584	N.D.	7.932 #
26) L6 AR-1254-1	0.000	5.764	0	296584	N.D.	5.387 #
28) L6 AR-1254-3	7.108	0.000	808779	0	9.595	N.D. #
29) L6 AR-1254-4	0.000	6.535	0	242959	N.D.	4.741 #
32) L7 AR-1260-2	7.542	6.585	500734	432519	6.435	7.055
33) L7 AR-1260-3	0.000	6.763	0	1023058	N.D.	17.007 #
38) L8 AR-1262-3	0.000	7.767	0	227929	N.D.	4.358 #
39) L8 AR-1262-4	0.000	7.804	0	243035	N.D.	2.629 #
41) L9 AR-1268-1	0.000	7.767	0	227929	N.D.	1.571 #
42) L9 AR-1268-2	0.000	7.804	0	243035	N.D.	1.830 #
43) L9 AR-1268-3	0.000	8.031	0	266836	N.D.	2.346 #
45) L9 AR-1268-5	0.000	8.629	0	137450	N.D.	0.386 #

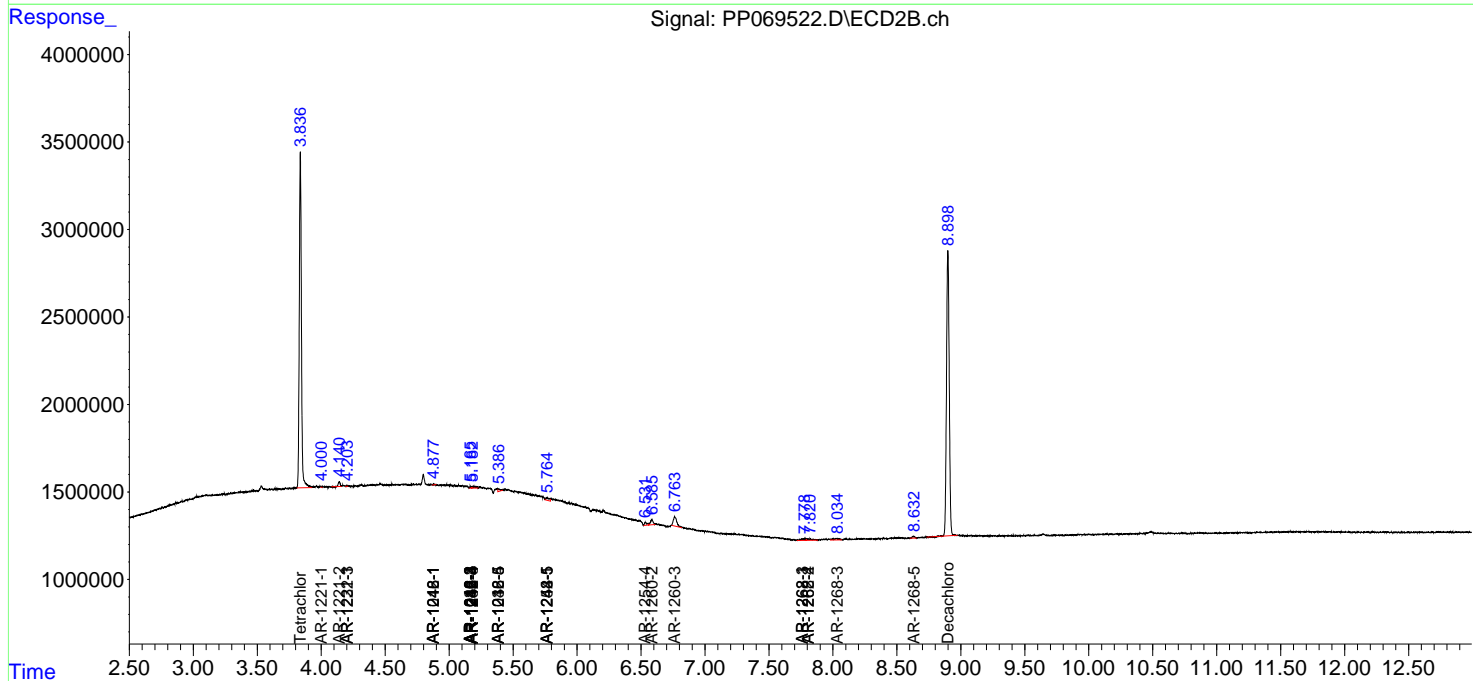
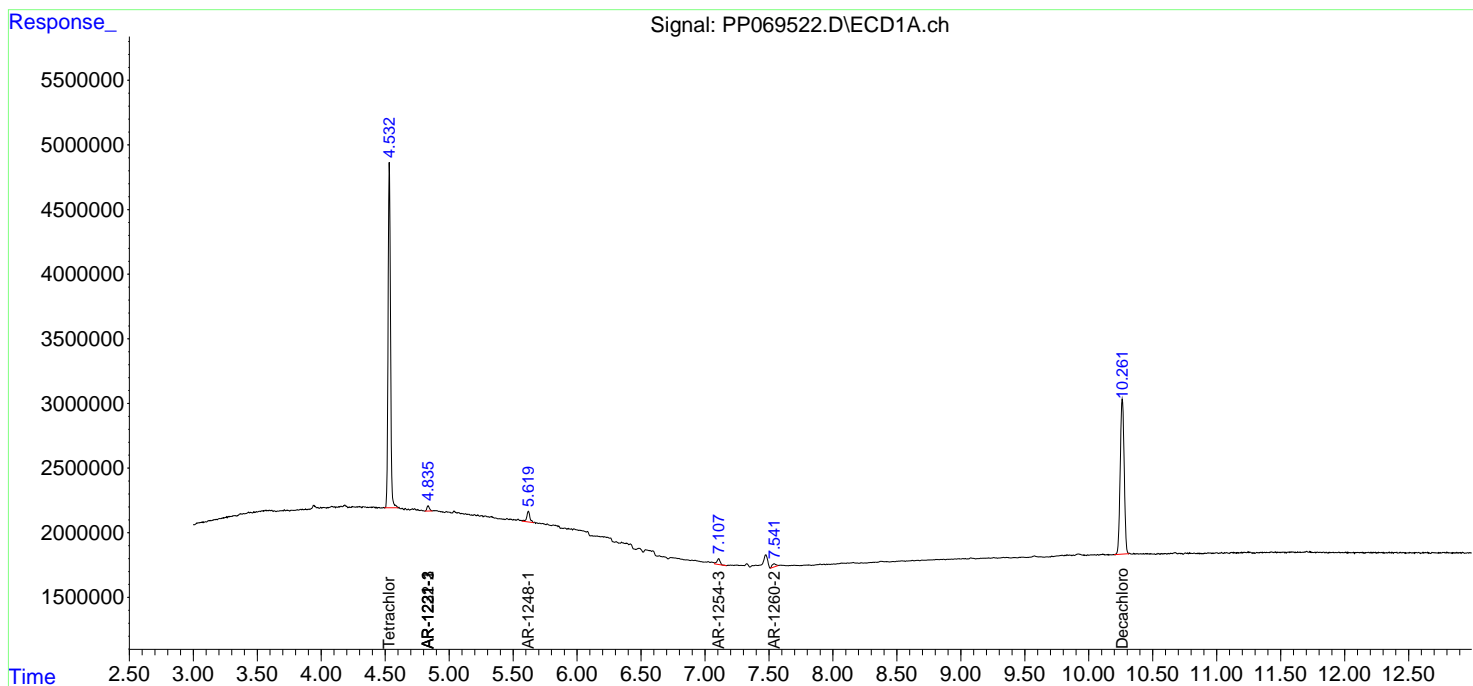
(f)=RT Delta > 1/2 Window (#)=Amounts differ by > 25% (m)=manual int.

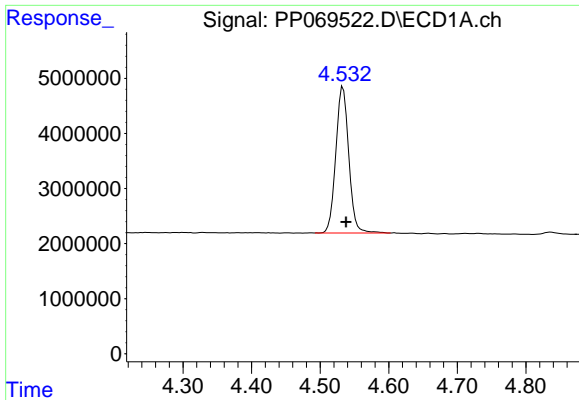
Data Path : Z:\pestpcbsrv\HPCHEM1\ECD_P\Data\PP020525\
 Data File : PP069522.D
 Signal(s) : Signal #1: ECD1A.ch Signal #2: ECD2B.ch
 Acq On : 05 Feb 2025 21:50
 Operator : YP\AJ
 Sample : I.BLK
 Misc :
 ALS Vial : 2 Sample Multiplier: 1

Instrument :
 ECD_P
 ClientSampleId :

Integration File signal 1: autoint1.e
 Integration File signal 2: autoint2.e
 Quant Time: Feb 06 02:28:02 2025
 Quant Method : Z:\pestpcbsrv\HPCHEM1\ECD_P\methods\PP012825.M
 Quant Title : GC EXTRACTABLES
 QLast Update : Wed Jan 29 00:13:21 2025
 Response via : Initial Calibration
 Integrator: ChemStation

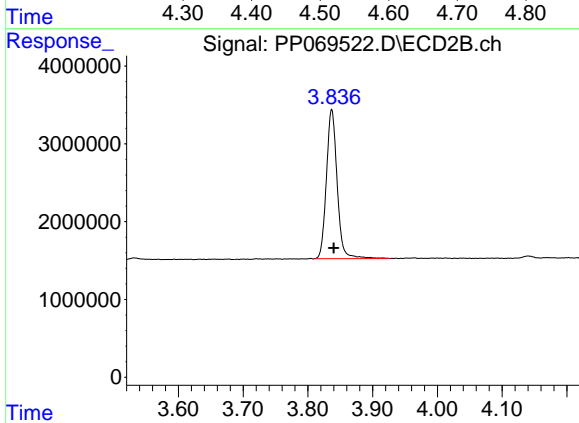
Volume Inj. : 2 µl
 Signal #1 Phase : ZB-MR1 Signal #2 Phase: ZB-MR2
 Signal #1 Info : 30Mx0.32mmx 0.50µ Signal #2 Info : 30M x 0.32mm x 0.25µm



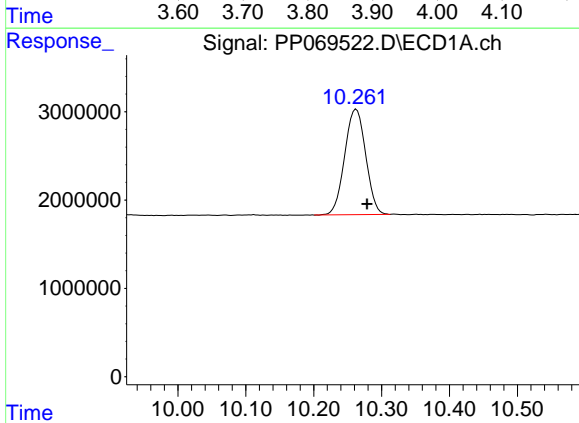


#1 Tetrachloro-m-xylene
 R.T.: 4.533 min
 Delta R.T.: -0.005 min
 Response: 34921383
 Conc: 24.40 ng/ml

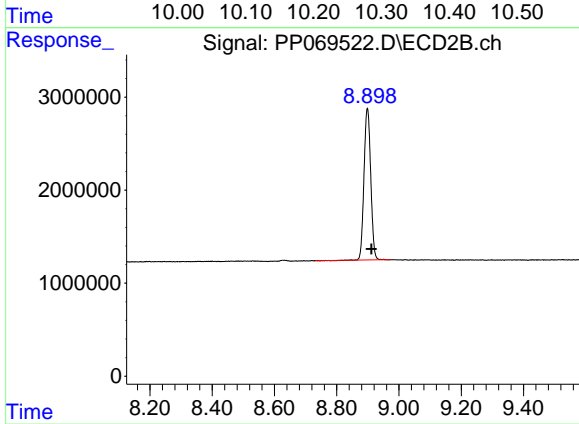
Instrument :
 ECD_P
 ClientSampleId :



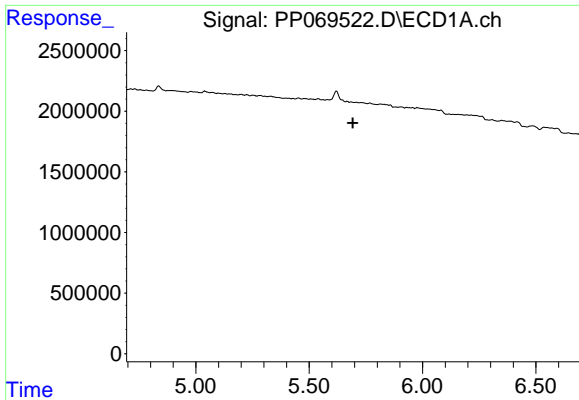
#1 Tetrachloro-m-xylene
 R.T.: 3.837 min
 Delta R.T.: -0.003 min
 Response: 22161855
 Conc: 24.83 ng/ml



#2 Decachlorobiphenyl
 R.T.: 10.263 min
 Delta R.T.: -0.016 min
 Response: 25720526
 Conc: 23.53 ng/ml



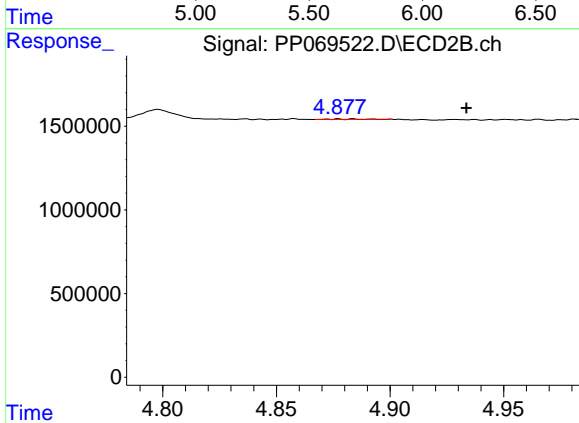
#2 Decachlorobiphenyl
 R.T.: 8.899 min
 Delta R.T.: -0.013 min
 Response: 24335437
 Conc: 21.76 ng/ml



#3 AR-1016-1

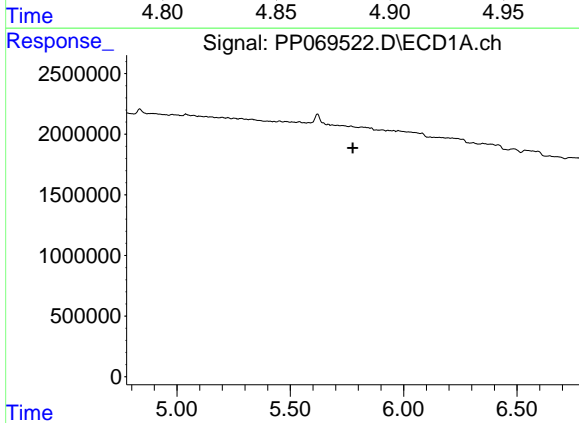
R.T.: 0.000 min
 Exp R.T.: 5.692 min
 Response: 0
 Conc: N.D.

Instrument :
 ECD_P
 ClientSampleId :



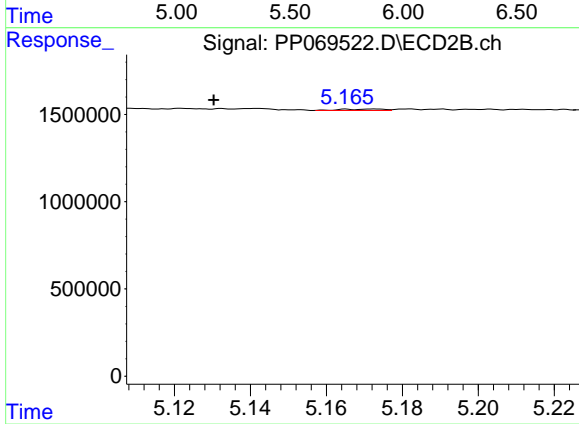
#3 AR-1016-1

R.T.: 4.877 min
 Delta R.T.: -0.056 min
 Response: 13188
 Conc: 0.40 ng/ml



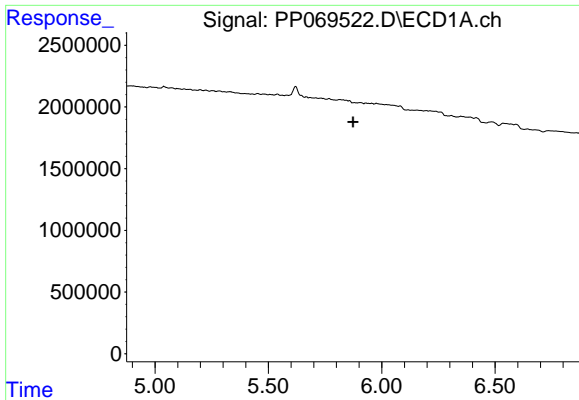
#5 AR-1016-3

R.T.: 0.000 min
 Exp R.T.: 5.776 min
 Response: 0
 Conc: N.D.



#5 AR-1016-3

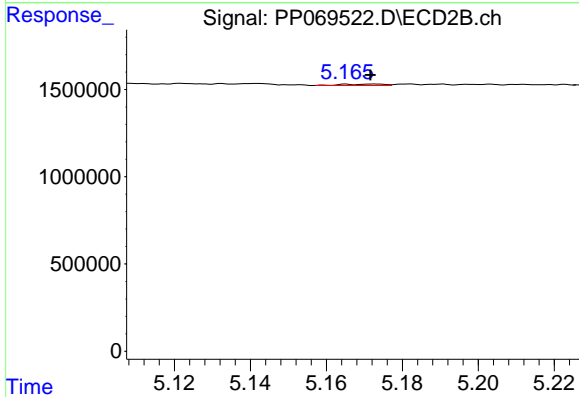
R.T.: 5.166 min
 Delta R.T.: 0.035 min
 Response: 63808
 Conc: 2.56 ng/ml



#6 AR-1016-4

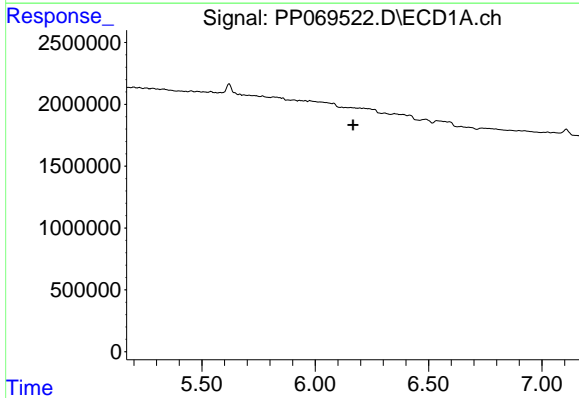
R.T.: 0.000 min
 Exp R.T.: 5.874 min
 Response: 0
 Conc: N.D.

Instrument :
 ECD_P
 ClientSampleId :



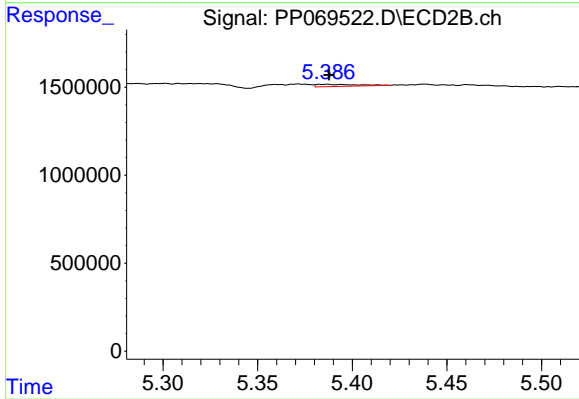
#6 AR-1016-4

R.T.: 5.166 min
 Delta R.T.: -0.006 min
 Response: 63808
 Conc: 3.16 ng/ml



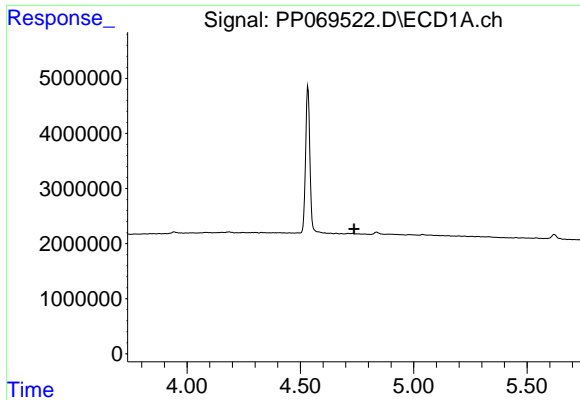
#7 AR-1016-5

R.T.: 0.000 min
 Exp R.T.: 6.167 min
 Response: 0
 Conc: N.D.



#7 AR-1016-5

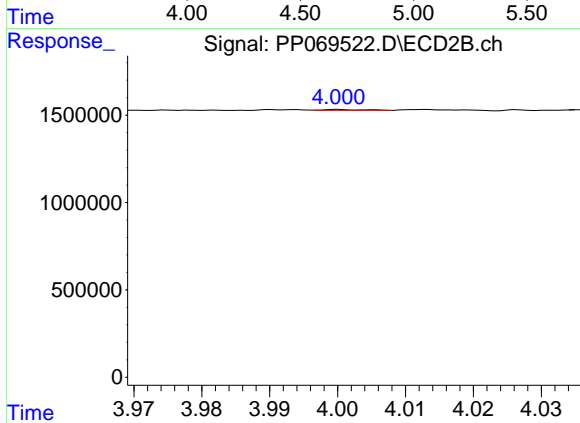
R.T.: 5.386 min
 Delta R.T.: -0.001 min
 Response: 183157
 Conc: 6.83 ng/ml



#8 AR-1221-1

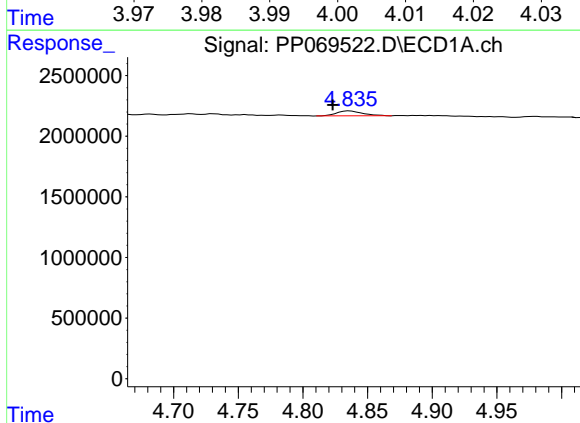
R.T.: 0.000 min
 Exp R.T.: 4.737 min
 Response: 0
 Conc: N.D.

Instrument :
 ECD_P
 ClientSampleId :



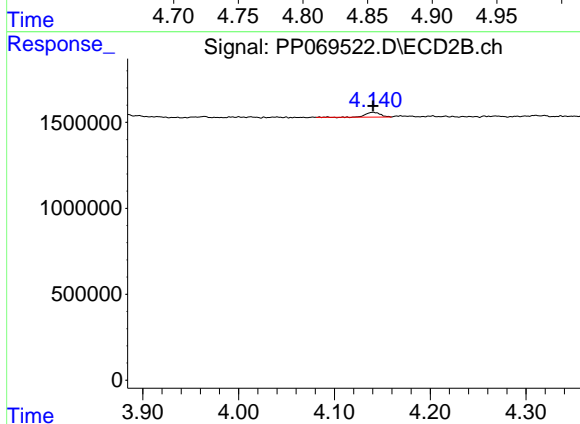
#8 AR-1221-1

R.T.: 4.000 min
 Delta R.T.: -0.053 min
 Response: 21840
 Conc: 1.77 ng/ml



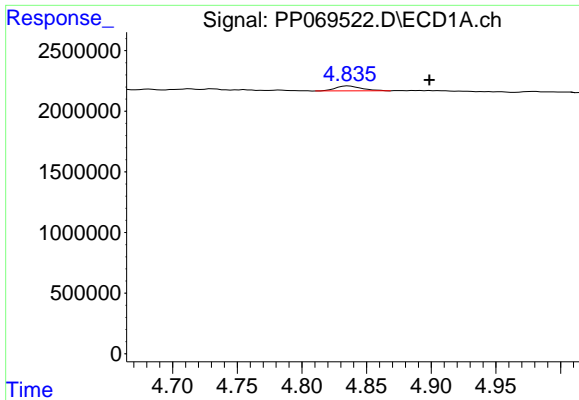
#9 AR-1221-2

R.T.: 4.836 min
 Delta R.T.: 0.013 min
 Response: 569753
 Conc: 41.61 ng/ml



#9 AR-1221-2

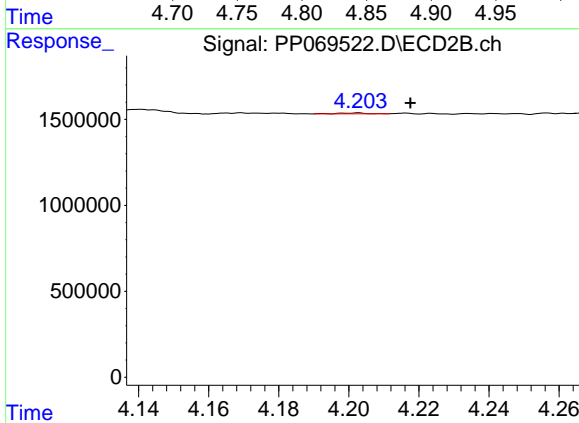
R.T.: 4.140 min
 Delta R.T.: 0.000 min
 Response: 278480
 Conc: 28.76 ng/ml



#10 AR-1221-3

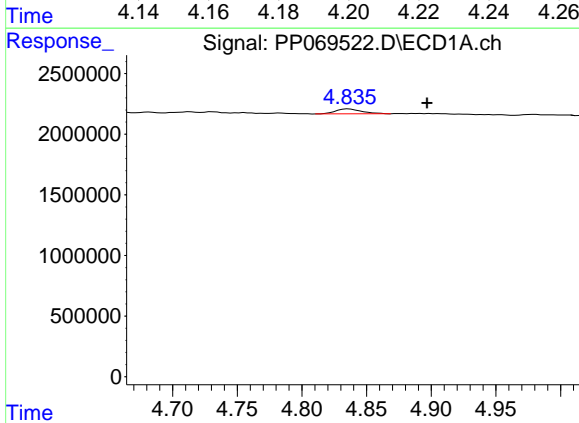
R.T.: 4.836 min
 Delta R.T.: -0.062 min
 Response: 569753
 Conc: 13.58 ng/ml

Instrument :
 ECD_P
 ClientSampleId :



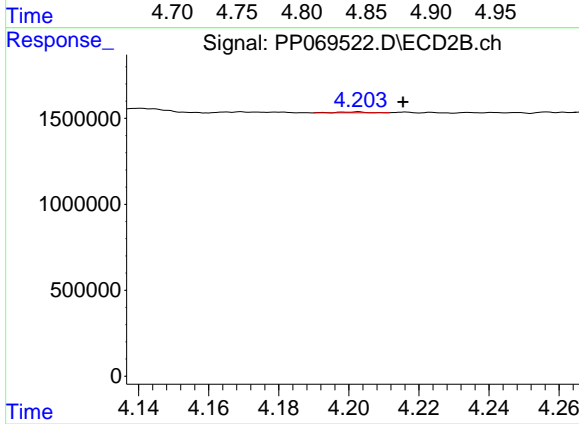
#10 AR-1221-3

R.T.: 4.203 min
 Delta R.T.: -0.015 min
 Response: 29652
 Conc: 1.02 ng/ml



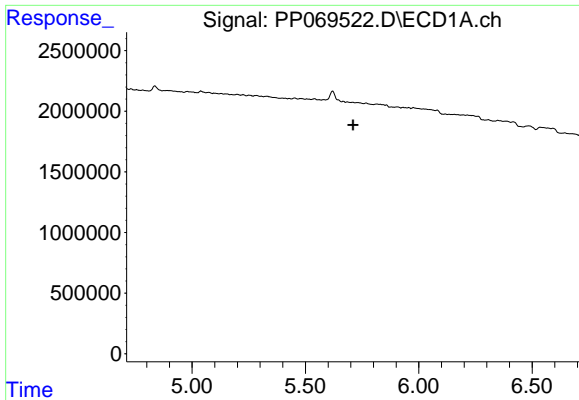
#11 AR-1232-1

R.T.: 4.836 min
 Delta R.T.: -0.061 min
 Response: 569753
 Conc: 17.11 ng/ml



#11 AR-1232-1

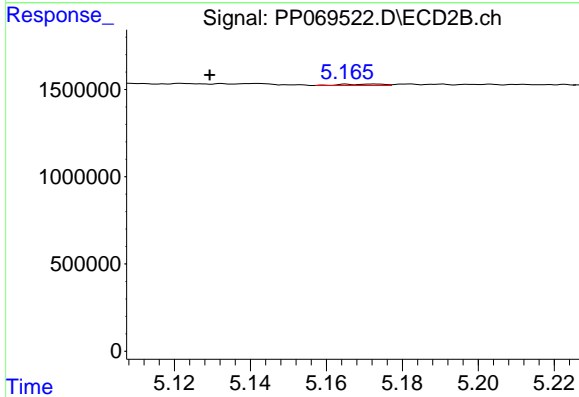
R.T.: 4.203 min
 Delta R.T.: -0.013 min
 Response: 29652
 Conc: 1.26 ng/ml



#13 AR-1232-3

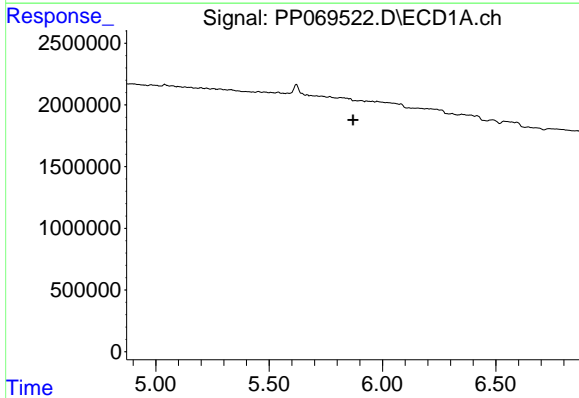
R.T.: 0.000 min
 Exp R.T.: 5.710 min
 Response: 0
 Conc: N.D.

Instrument :
 ECD_P
 ClientSampleId :



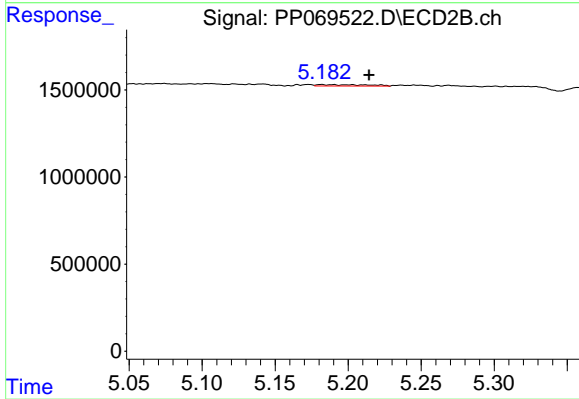
#13 AR-1232-3

R.T.: 5.166 min
 Delta R.T.: 0.036 min
 Response: 63808
 Conc: 4.93 ng/ml



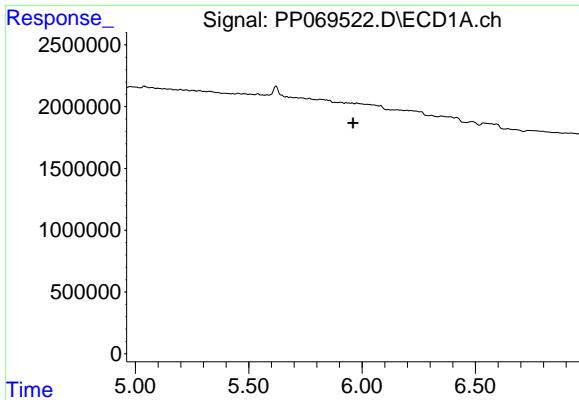
#14 AR-1232-4

R.T.: 0.000 min
 Exp R.T.: 5.870 min
 Response: 0
 Conc: N.D.



#14 AR-1232-4

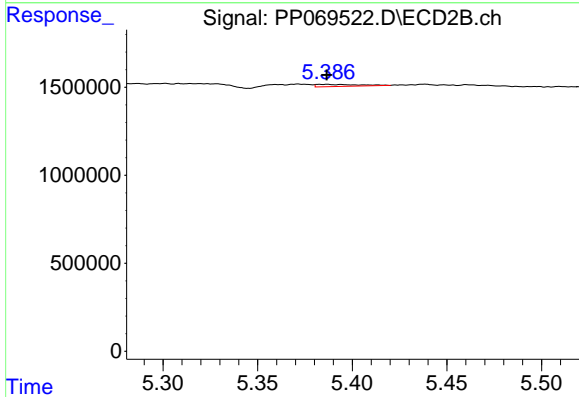
R.T.: 5.182 min
 Delta R.T.: -0.033 min
 Response: 186308
 Conc: 16.81 ng/ml



#15 AR-1232-5

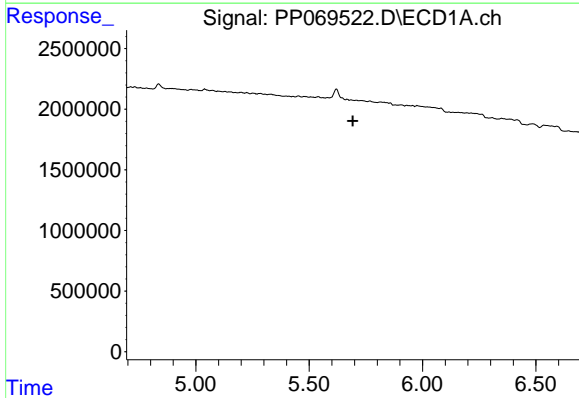
R.T.: 0.000 min
 Exp R.T.: 5.960 min
 Response: 0
 Conc: N.D.

Instrument :
 ECD_P
 ClientSampleId :



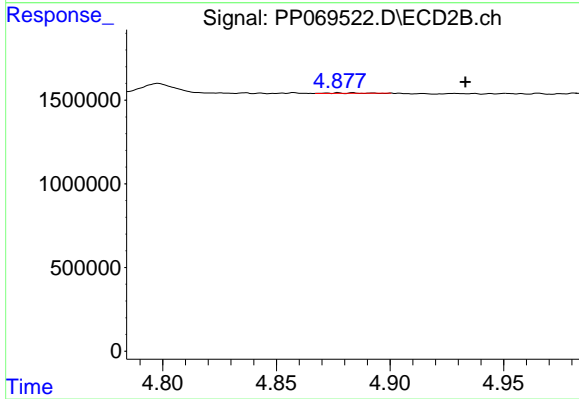
#15 AR-1232-5

R.T.: 5.386 min
 Delta R.T.: 0.000 min
 Response: 183157
 Conc: 15.00 ng/ml



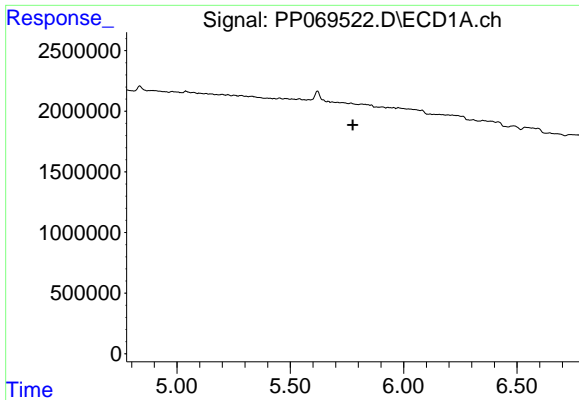
#16 AR-1242-1

R.T.: 0.000 min
 Exp R.T.: 5.692 min
 Response: 0
 Conc: N.D.



#16 AR-1242-1

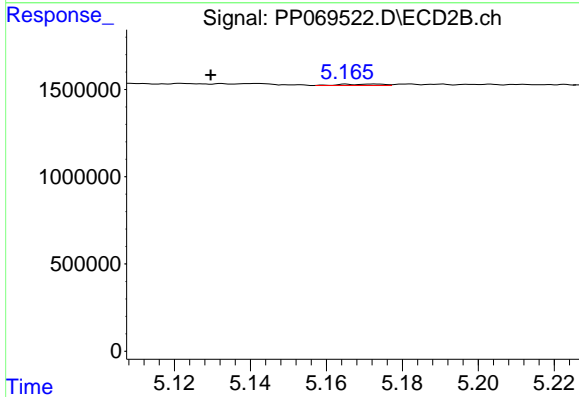
R.T.: 4.877 min
 Delta R.T.: -0.056 min
 Response: 13188
 Conc: 0.46 ng/ml



#18 AR-1242-3

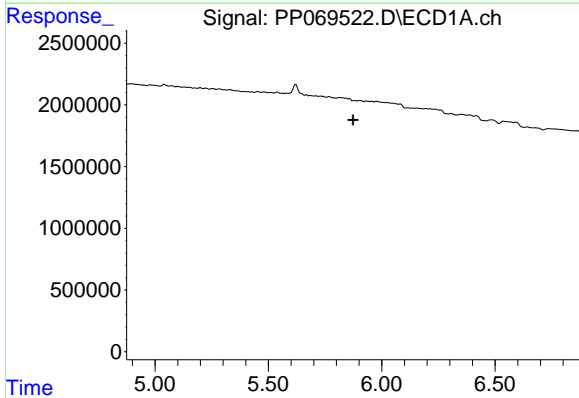
R.T.: 0.000 min
 Exp R.T. : 5.776 min
 Response: 0
 Conc: N.D.

Instrument :
 ECD_P
 ClientSampleId :



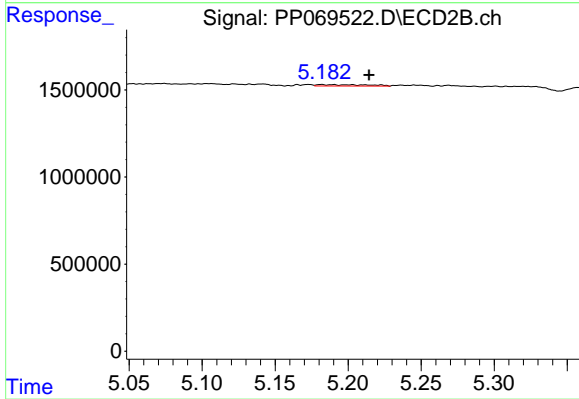
#18 AR-1242-3

R.T.: 5.166 min
 Delta R.T.: 0.036 min
 Response: 63808
 Conc: 2.84 ng/ml



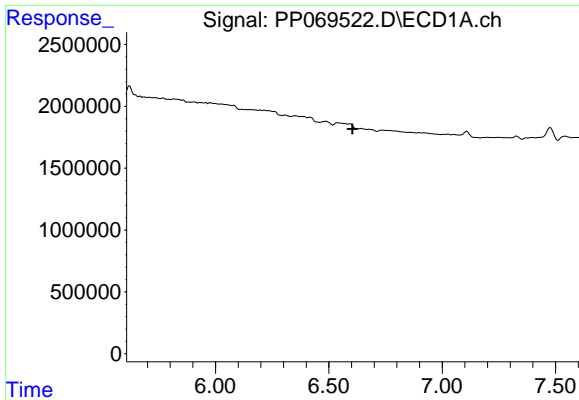
#19 AR-1242-4

R.T.: 0.000 min
 Exp R.T. : 5.874 min
 Response: 0
 Conc: N.D.



#19 AR-1242-4

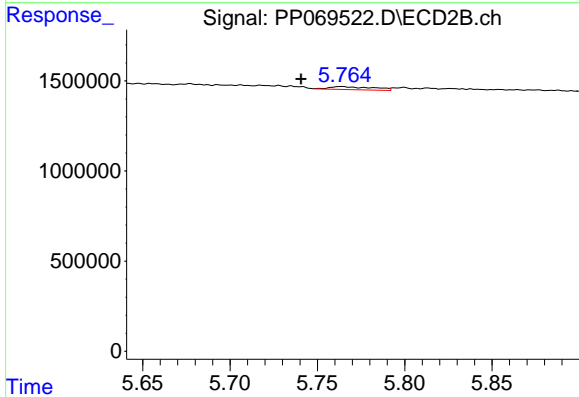
R.T.: 5.182 min
 Delta R.T.: -0.033 min
 Response: 186308
 Conc: 8.63 ng/ml



#20 AR-1242-5

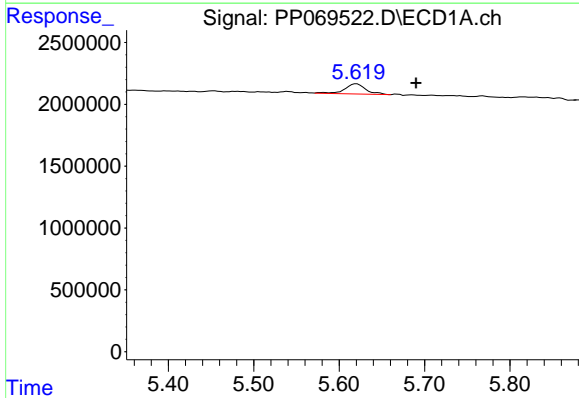
R.T.: 0.000 min
 Exp R.T.: 6.605 min
 Response: 0
 Conc: N.D.

Instrument :
 ECD_P
 ClientSampleId :



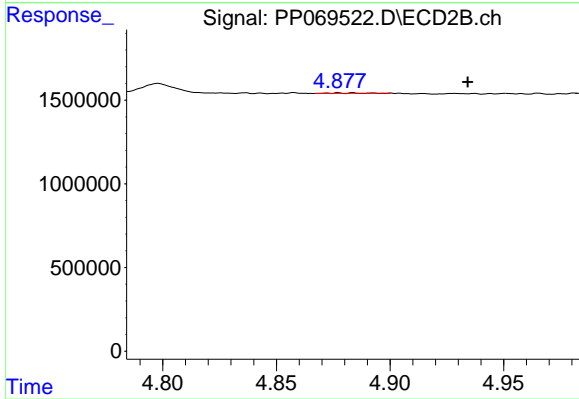
#20 AR-1242-5

R.T.: 5.764 min
 Delta R.T.: 0.023 min
 Response: 296584
 Conc: 10.31 ng/ml



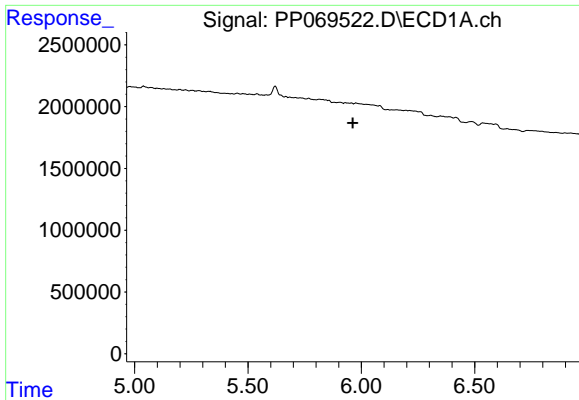
#21 AR-1248-1

R.T.: 5.621 min
 Delta R.T.: -0.069 min
 Response: 1426433
 Conc: 43.97 ng/ml



#21 AR-1248-1

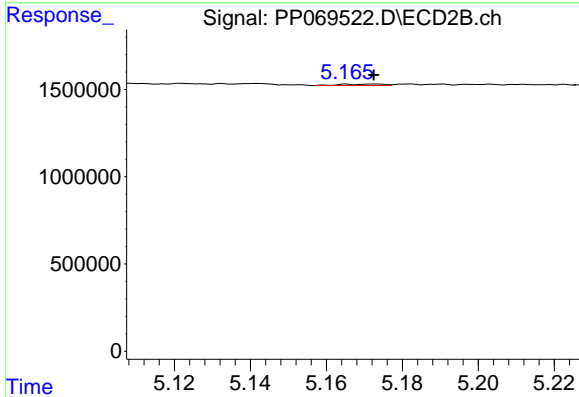
R.T.: 4.877 min
 Delta R.T.: -0.057 min
 Response: 13188
 Conc: 0.60 ng/ml



#22 AR-1248-2

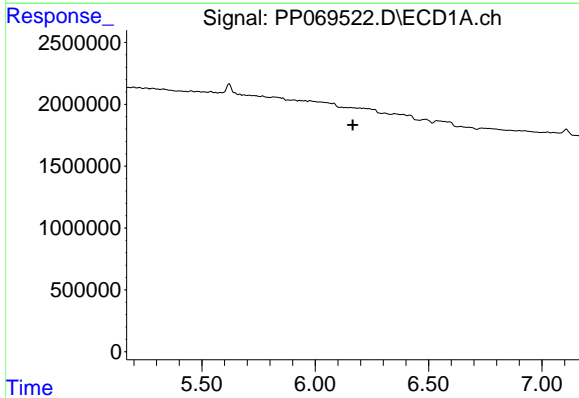
R.T.: 0.000 min
 Exp R.T.: 5.963 min
 Response: 0
 Conc: N.D.

Instrument :
 ECD_P
 ClientSampleId :



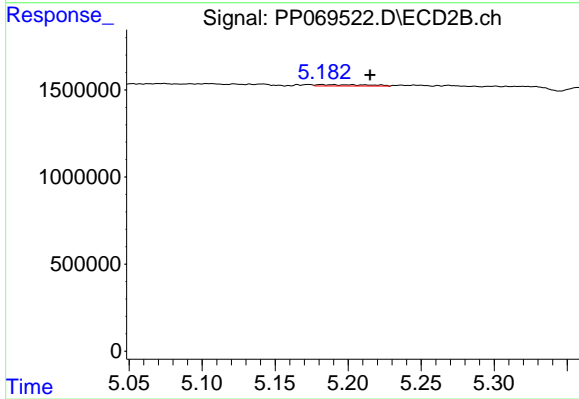
#22 AR-1248-2

R.T.: 5.166 min
 Delta R.T.: -0.007 min
 Response: 63808
 Conc: 2.12 ng/ml



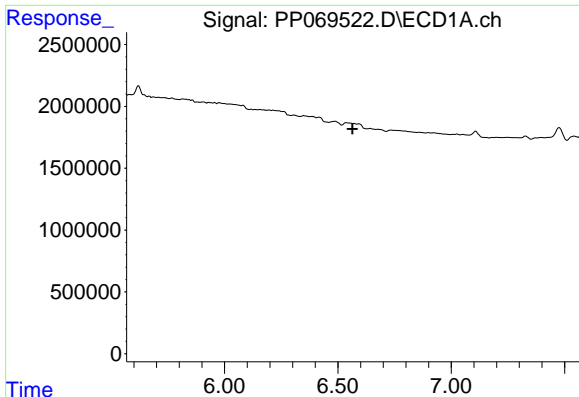
#23 AR-1248-3

R.T.: 0.000 min
 Exp R.T.: 6.166 min
 Response: 0
 Conc: N.D.



#23 AR-1248-3

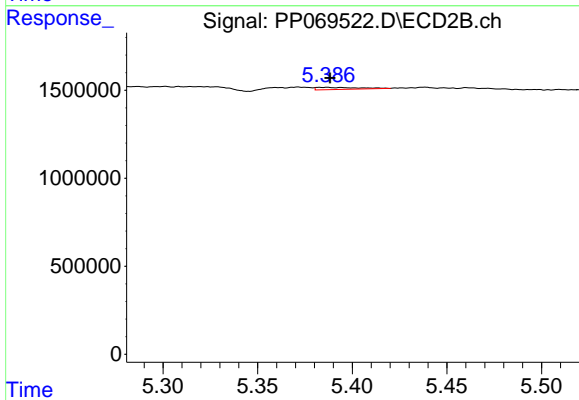
R.T.: 5.182 min
 Delta R.T.: -0.033 min
 Response: 186308
 Conc: 6.01 ng/ml



#24 AR-1248-4

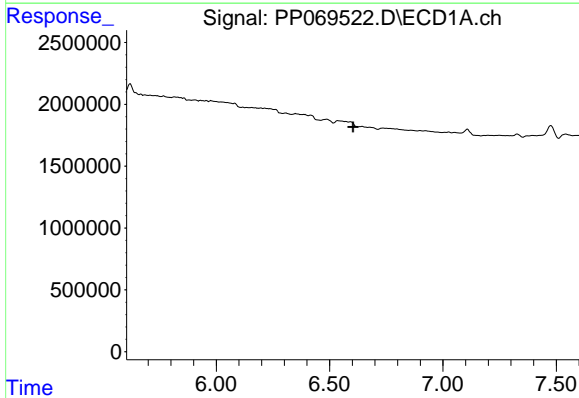
R.T.: 0.000 min
 Exp R.T. : 6.565 min
 Response: 0
 Conc: N.D.

Instrument :
 ECD_P
 ClientSampleId :



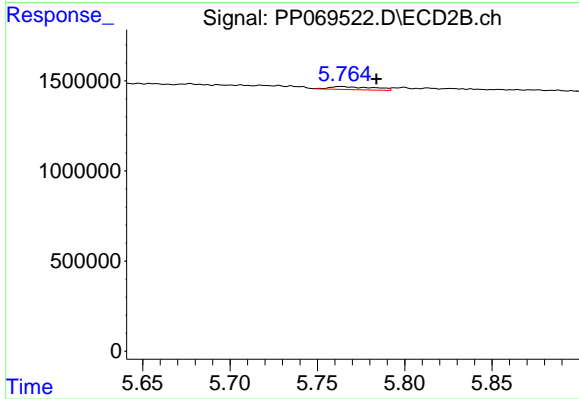
#24 AR-1248-4

R.T.: 5.386 min
 Delta R.T.: -0.002 min
 Response: 183157
 Conc: 4.96 ng/ml



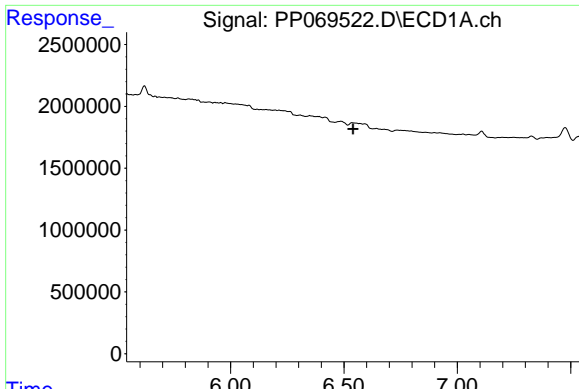
#25 AR-1248-5

R.T.: 0.000 min
 Exp R.T. : 6.604 min
 Response: 0
 Conc: N.D.



#25 AR-1248-5

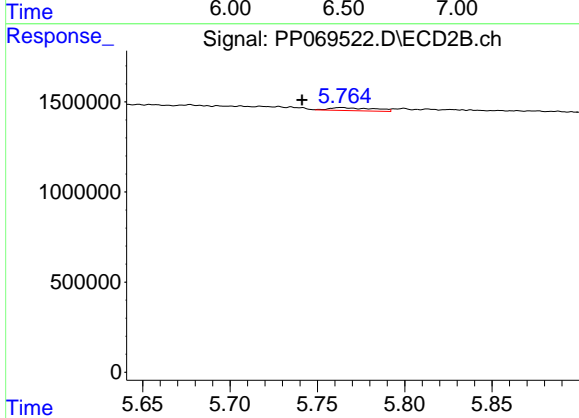
R.T.: 5.764 min
 Delta R.T.: -0.020 min
 Response: 296584
 Conc: 7.93 ng/ml



#26 AR-1254-1

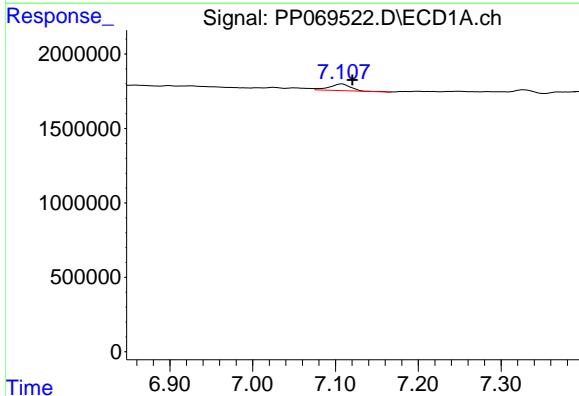
R.T.: 0.000 min
 Exp R.T.: 6.541 min
 Response: 0
 Conc: N.D.

Instrument :
 ECD_P
 ClientSampleId :



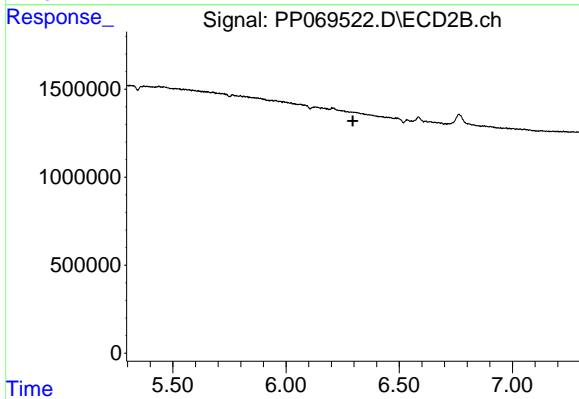
#26 AR-1254-1

R.T.: 5.764 min
 Delta R.T.: 0.023 min
 Response: 296584
 Conc: 5.39 ng/ml



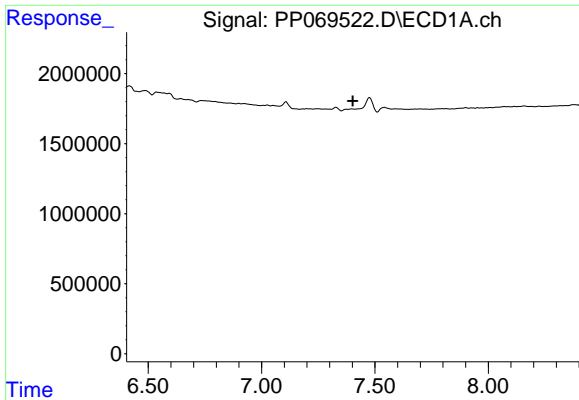
#28 AR-1254-3

R.T.: 7.108 min
 Delta R.T.: -0.012 min
 Response: 808779
 Conc: 9.60 ng/ml



#28 AR-1254-3

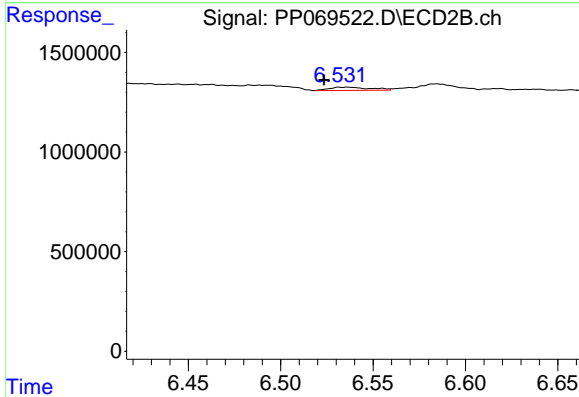
R.T.: 0.000 min
 Exp R.T.: 6.295 min
 Response: 0
 Conc: N.D.



#29 AR-1254-4

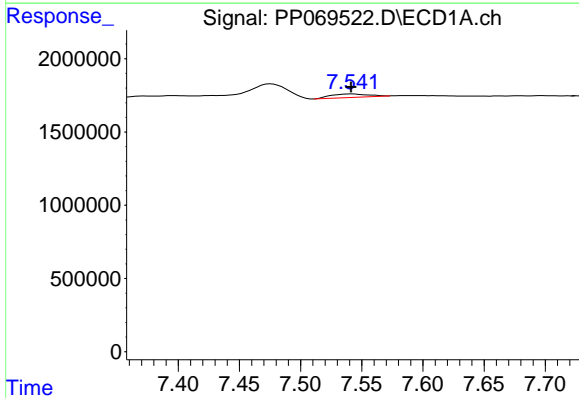
R.T.: 0.000 min
 Exp R.T.: 7.403 min
 Response: 0
 Conc: N.D.

Instrument :
 ECD_P
 ClientSampleId :



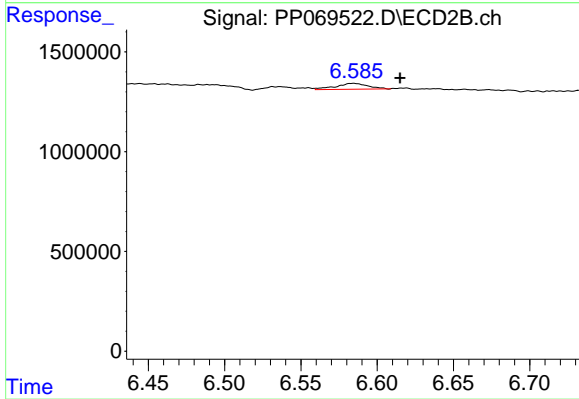
#29 AR-1254-4

R.T.: 6.535 min
 Delta R.T.: 0.012 min
 Response: 242959
 Conc: 4.74 ng/ml



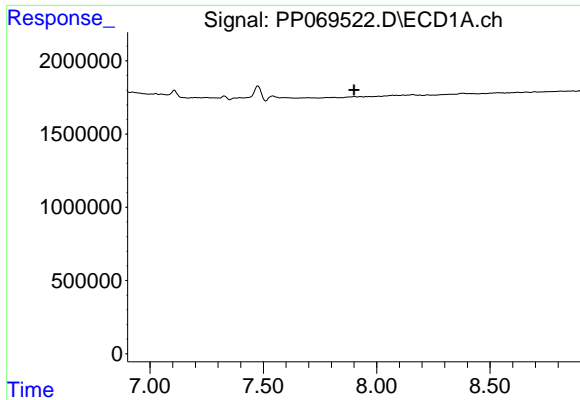
#32 AR-1260-2

R.T.: 7.542 min
 Delta R.T.: 0.000 min
 Response: 500734
 Conc: 6.44 ng/ml



#32 AR-1260-2

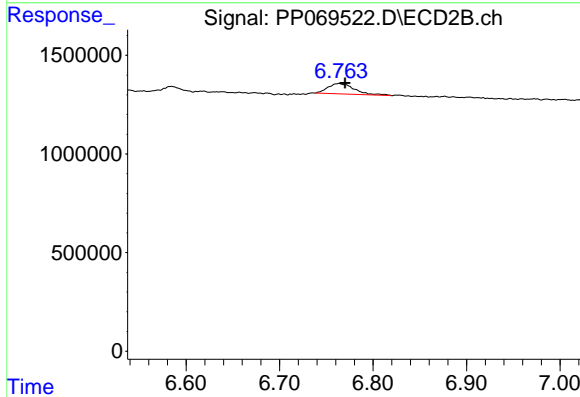
R.T.: 6.585 min
 Delta R.T.: -0.030 min
 Response: 432519
 Conc: 7.06 ng/ml



#33 AR-1260-3

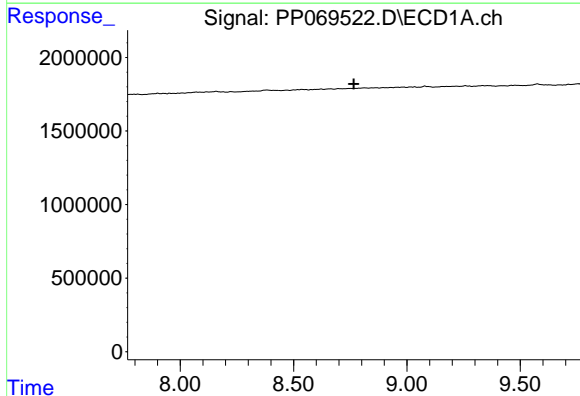
R.T.: 0.000 min
 Exp R.T.: 7.900 min
 Response: 0
 Conc: N.D.

Instrument :
 ECD_P
 ClientSampleId :



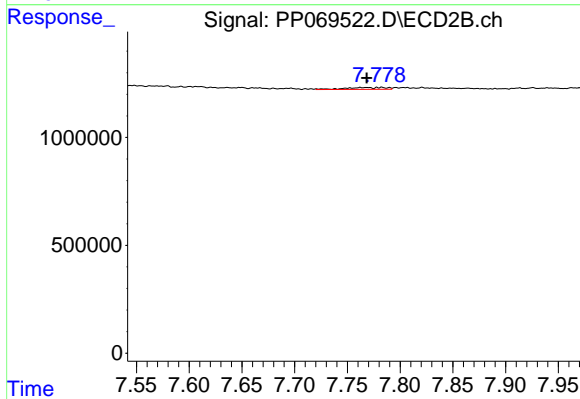
#33 AR-1260-3

R.T.: 6.763 min
 Delta R.T.: -0.007 min
 Response: 1023058
 Conc: 17.01 ng/ml



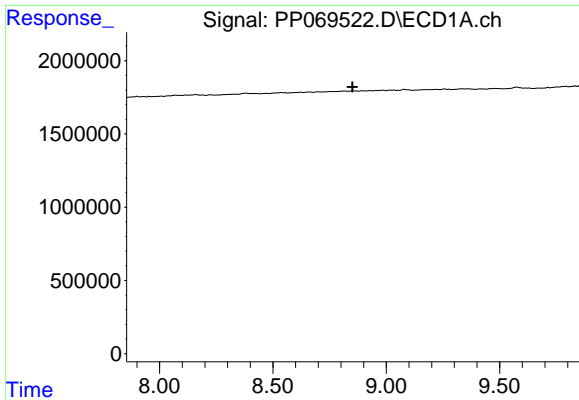
#38 AR-1262-3

R.T.: 0.000 min
 Exp R.T.: 8.766 min
 Response: 0
 Conc: N.D.



#38 AR-1262-3

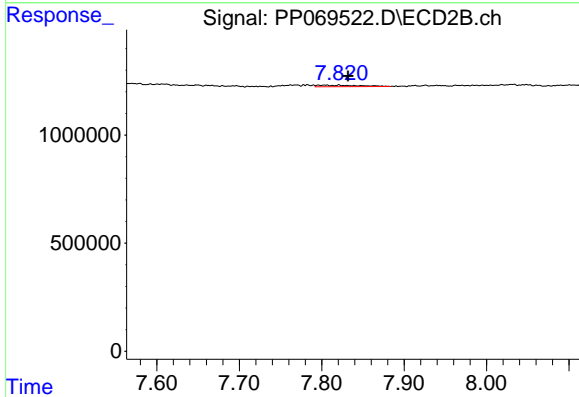
R.T.: 7.767 min
 Delta R.T.: -0.001 min
 Response: 227929
 Conc: 4.36 ng/ml



#39 AR-1262-4

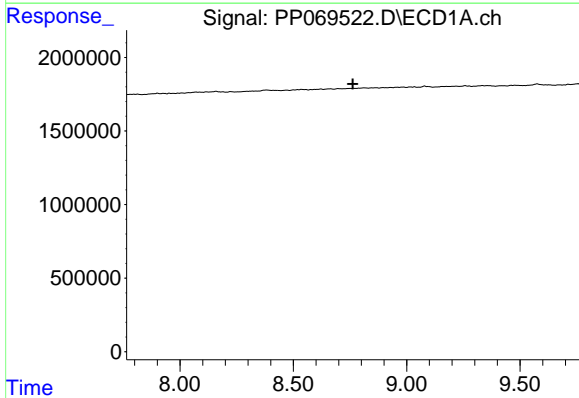
R.T.: 0.000 min
 Exp R.T. : 8.852 min
 Response: 0
 Conc: N.D.

Instrument :
 ECD_P
 ClientSampleId :



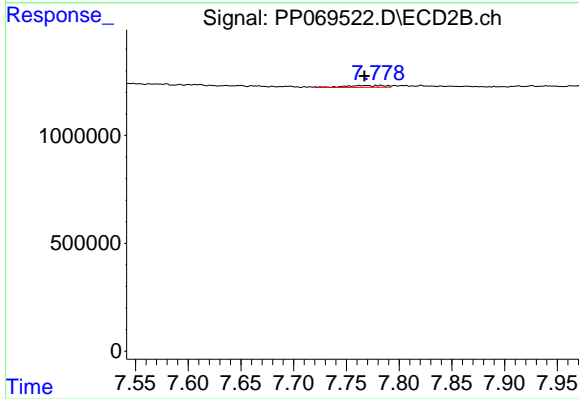
#39 AR-1262-4

R.T.: 7.804 min
 Delta R.T.: -0.028 min
 Response: 243035
 Conc: 2.63 ng/ml



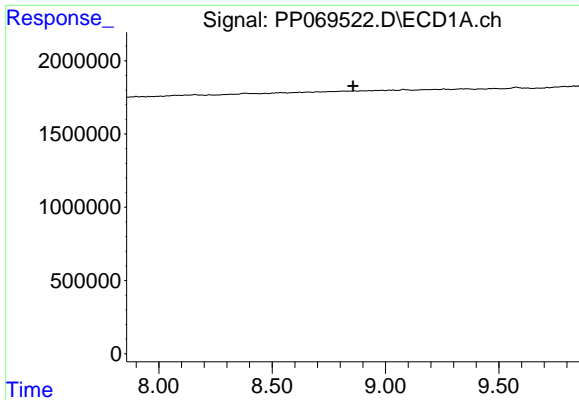
#41 AR-1268-1

R.T.: 0.000 min
 Exp R.T. : 8.763 min
 Response: 0
 Conc: N.D.



#41 AR-1268-1

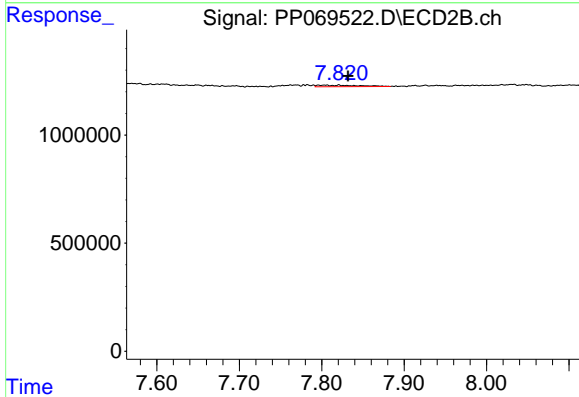
R.T.: 7.767 min
 Delta R.T.: 0.000 min
 Response: 227929
 Conc: 1.57 ng/ml



#42 AR-1268-2

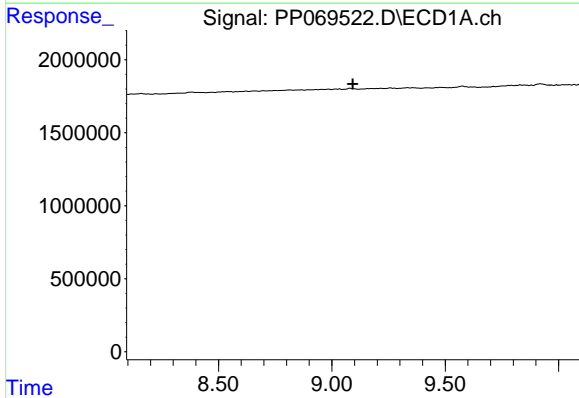
R.T.: 0.000 min
 Exp R.T. : 8.857 min
 Response: 0
 Conc: N.D.

Instrument :
 ECD_P
 ClientSampleId :



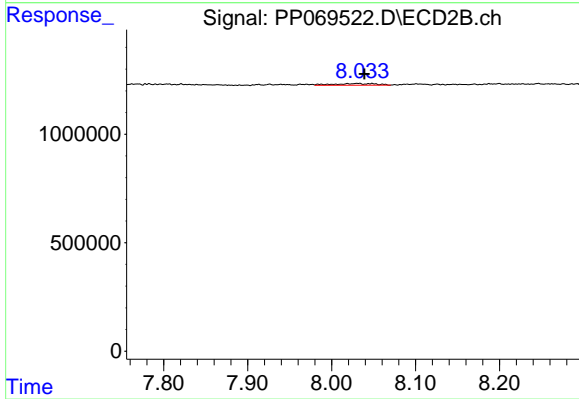
#42 AR-1268-2

R.T.: 7.804 min
 Delta R.T.: -0.028 min
 Response: 243035
 Conc: 1.83 ng/ml



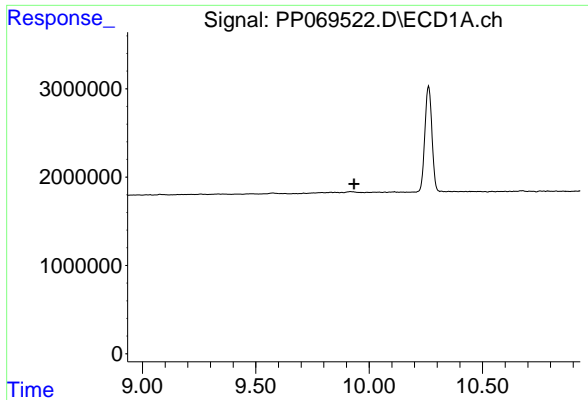
#43 AR-1268-3

R.T.: 0.000 min
 Exp R.T. : 9.093 min
 Response: 0
 Conc: N.D.



#43 AR-1268-3

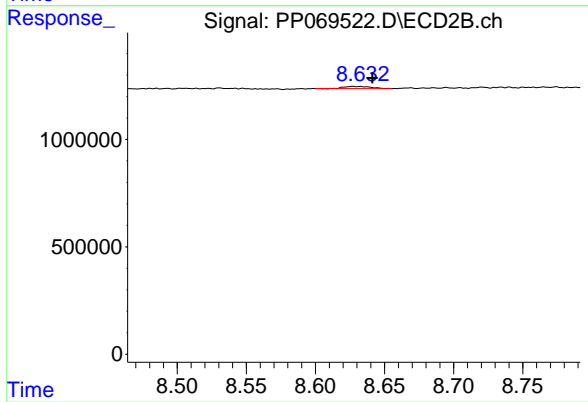
R.T.: 8.031 min
 Delta R.T.: -0.009 min
 Response: 266836
 Conc: 2.35 ng/ml



#45 AR-1268-5

R.T.: 0.000 min
 Exp R.T.: 9.933 min
 Response: 0
 Conc: N.D.

Instrument :
 ECD_P
 ClientSampleId :



#45 AR-1268-5

R.T.: 8.629 min
 Delta R.T.: -0.012 min
 Response: 137450
 Conc: 0.39 ng/ml