

Data Path : Z:\pestpcbsrv\HPCHEM1\ECD\_P\Data\PP020525\  
 Data File : PP069541.D  
 Signal(s) : Signal #1: ECD1A.ch Signal #2: ECD2B.ch  
 Acq On : 06 Feb 2025 04:13  
 Operator : YP\AJ  
 Sample : Q1306-03 10X  
 Misc :  
 ALS Vial : 40 Sample Multiplier: 1

Instrument :  
 ECD\_P  
 ClientSampleId :

Integration File signal 1: autoint1.e  
 Integration File signal 2: autoint2.e  
 Quant Time: Feb 06 06:36:07 2025  
 Quant Method : Z:\pestpcbsrv\HPCHEM1\ECD\_P\methods\PP012825.M  
 Quant Title : GC EXTRACTABLES  
 QLast Update : Wed Jan 29 00:13:21 2025  
 Response via : Initial Calibration  
 Integrator: ChemStation

Volume Inj. : 2 µl  
 Signal #1 Phase : ZB-MR2 Signal #2 Phase: ZB-MR2  
 Signal #1 Info : 30Mx0.32mmx 0.50µ Signal #2 Info : 30M x 0.32mm x 0.25µm

Compound	RT#1	RT#2	Resp#1	Resp#2	ng/ml	ng/ml
-----						
System Monitoring Compounds						
1) SA Tetrachlo...	4.534	3.839	3671309	3127787	2.565	3.504 #
2) SA Decachlor...	10.268	8.903	3548952	2403360	3.247	2.149 #
Target Compounds						
3) L1 AR-1016-1	0.000	4.954	0	30331	N.D.	0.930 #
4) L1 AR-1016-2	0.000	4.954	0	30331	N.D.	0.675 #
5) L1 AR-1016-3	0.000	5.167f	0	143883	N.D.	5.782 #
6) L1 AR-1016-4	0.000	5.167	0	143883	N.D.	7.124 #
7) L1 AR-1016-5	0.000	5.384	0	162506	N.D.	6.058 #
8) L2 AR-1221-1	0.000	4.074	0	40800	N.D.	3.312 #
9) L2 AR-1221-2	0.000	4.120	0	48532	N.D.	5.012 #
10) L2 AR-1221-3	0.000	4.164f	0	39939	N.D.	1.369 #
11) L3 AR-1232-1	0.000	4.164f	0	39939	N.D.	1.701 #
12) L3 AR-1232-2	0.000	4.954	0	30331	N.D.	1.287 #
13) L3 AR-1232-3	0.000	5.167f	0	143883	N.D.	11.113 #
14) L3 AR-1232-4	0.000	5.167f	0	143883	N.D.	12.978 #
15) L3 AR-1232-5	0.000	5.384	0	162506	N.D.	13.309 #
16) L4 AR-1242-1	0.000	4.954	0	30331	N.D.	1.052 #
17) L4 AR-1242-2	0.000	4.954	0	30331	N.D.	0.770 #
18) L4 AR-1242-3	0.000	5.167f	0	143883	N.D.	6.394 #
19) L4 AR-1242-4	0.000	5.167f	0	143883	N.D.	6.667 #
20) L4 AR-1242-5	0.000	5.737	0	522357	N.D.	18.157 #
21) L5 AR-1248-1	5.622f	4.954	629365	30331	19.401	1.378 #
22) L5 AR-1248-2	0.000	5.167	0	143883	N.D.	4.786 #
23) L5 AR-1248-3	0.000	5.167f	0	143883	N.D.	4.644 #
24) L5 AR-1248-4	6.534	5.384	1495779	162506	27.136	4.399 #
25) L5 AR-1248-5	6.534f	5.737f	1495779	522357	28.019	13.971 #
26) L6 AR-1254-1	6.534	5.737	1495779	522357	25.850	9.488 #
27) L6 AR-1254-2	6.752	5.885	995611	619668	12.408	12.811
28) L6 AR-1254-3	7.114	6.289	669266	532596	7.940	7.017
29) L6 AR-1254-4	7.398	6.519	601832	322449	8.826	6.292 #
30) L6 AR-1254-5	7.815	6.938	515594	557582	7.577	8.377
31) L7 AR-1260-1	0.000	6.419	0	273367	N.D.	5.668 #
32) L7 AR-1260-2	7.535	6.607	559623	125123	7.192	2.041 #
33) L7 AR-1260-3	0.000	6.765	0	1024442	N.D.	17.030 #
36) L8 AR-1262-1	0.000	6.938f	0	557582	N.D.	7.852 #
38) L8 AR-1262-3	0.000	7.819f	0	153626	N.D.	2.937 #
39) L8 AR-1262-4	0.000	7.819	0	153626	N.D.	1.662 #
41) L9 AR-1268-1	0.000	7.819f	0	153626	N.D.	1.059 #
42) L9 AR-1268-2	0.000	7.819	0	153626	N.D.	1.157 #

(f)=RT Delta > 1/2 Window (#)=Amounts differ by > 25% (m)=manual int.

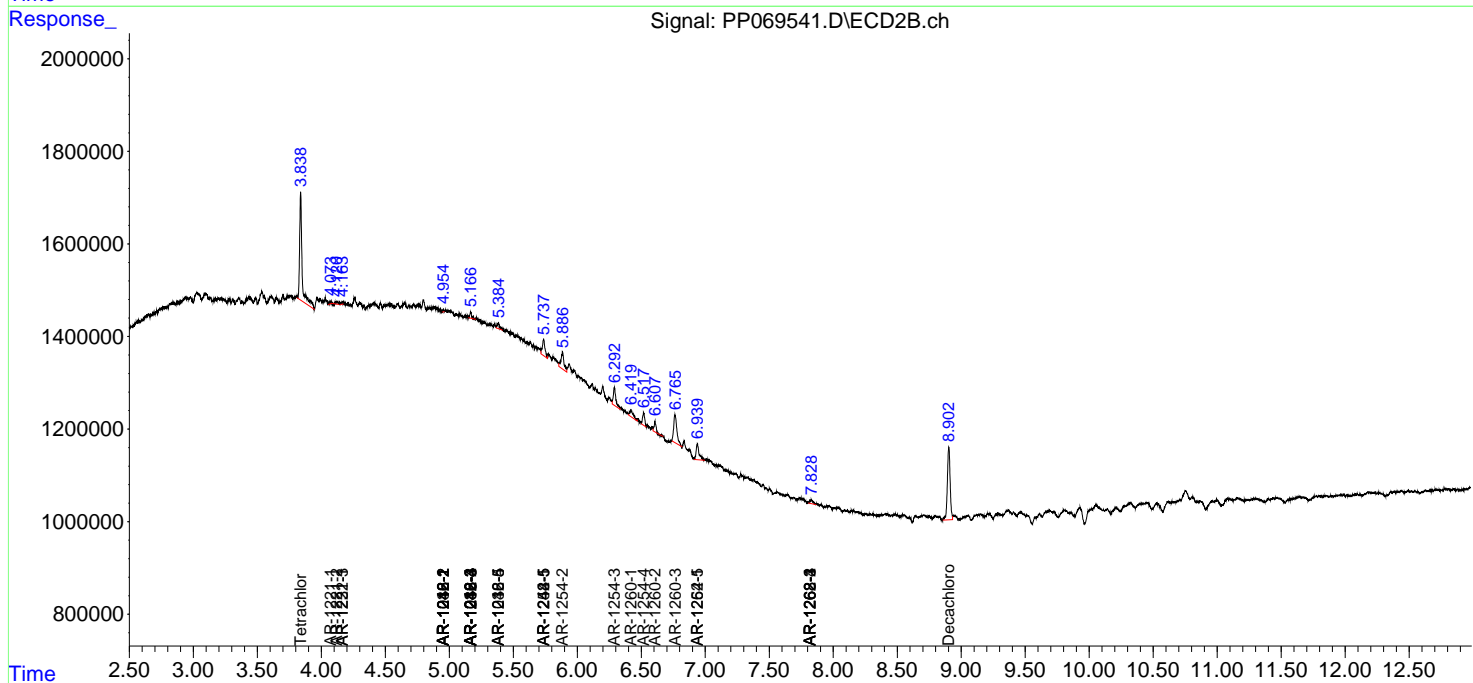
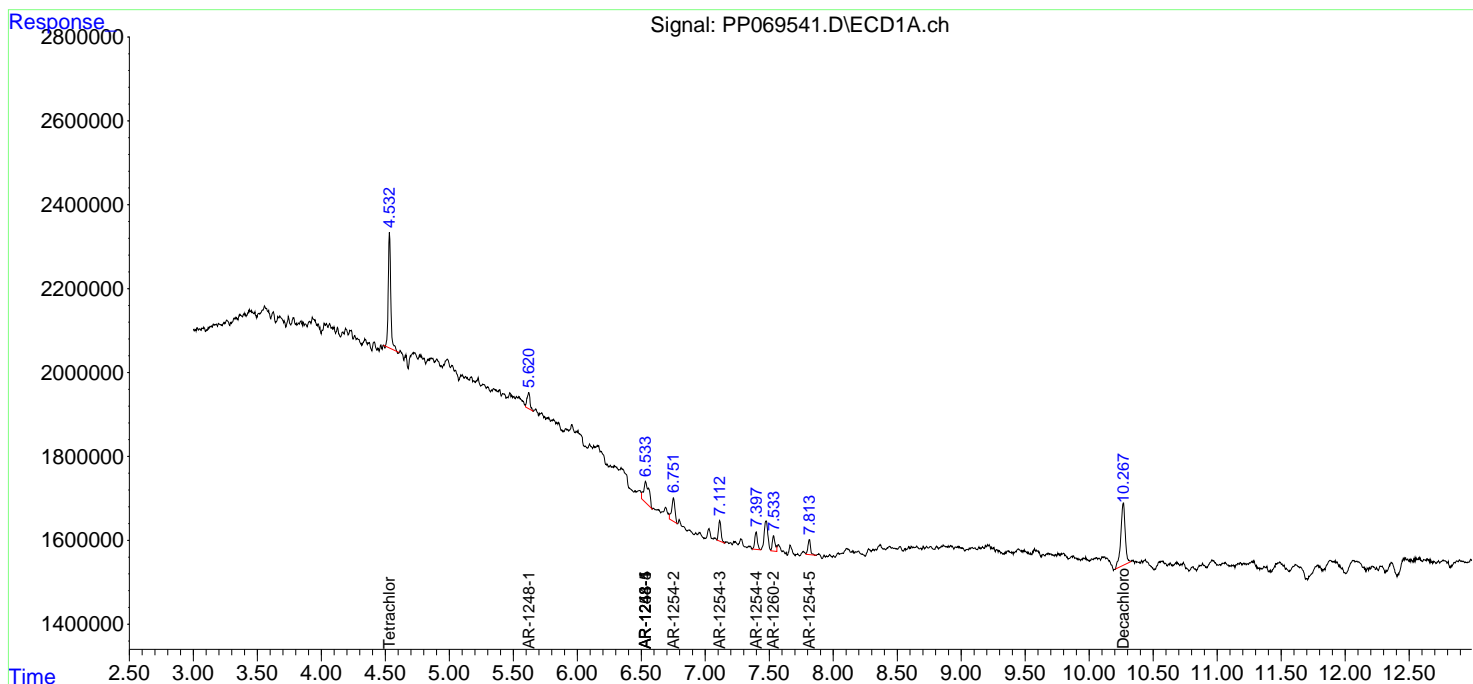
Instrument :  
ECD\_P  
ClientSampleId :

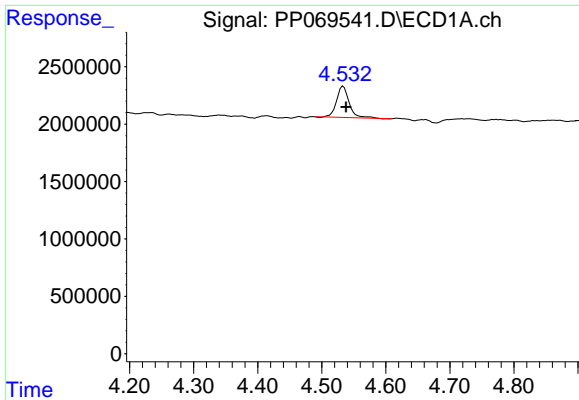
Data Path : Z:\pestpcbsrv\HPCHEM1\ECD\_P\Data\PP020525\  
 Data File : PP069541.D  
 Signal(s) : Signal #1: ECD1A.ch Signal #2: ECD2B.ch  
 Acq On : 06 Feb 2025 04:13  
 Operator : YP\AJ  
 Sample : Q1306-03 10X  
 Misc :  
 ALS Vial : 40 Sample Multiplier: 1

Instrument :  
 ECD\_P  
 ClientSampleId :

Integration File signal 1: autoint1.e  
 Integration File signal 2: autoint2.e  
 Quant Time: Feb 06 06:36:07 2025  
 Quant Method : Z:\pestpcbsrv\HPCHEM1\ECD\_P\methods\PP012825.M  
 Quant Title : GC EXTRACTABLES  
 QLast Update : Wed Jan 29 00:13:21 2025  
 Response via : Initial Calibration  
 Integrator: ChemStation

Volume Inj. : 2 µl  
 Signal #1 Phase : ZB-MR1 Signal #2 Phase: ZB-MR2  
 Signal #1 Info : 30Mx0.32mmx 0.50µ Signal #2 Info : 30M x 0.32mm x 0.25µm

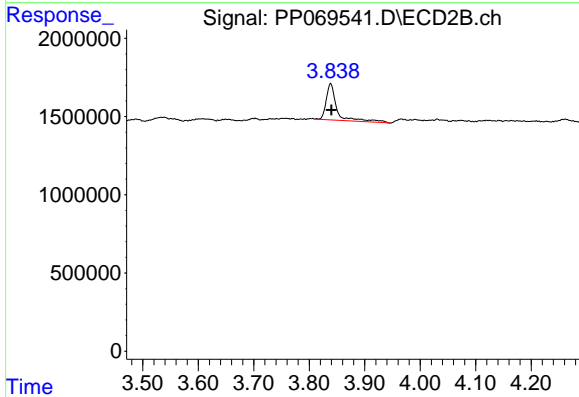




#1 Tetrachloro-m-xylene

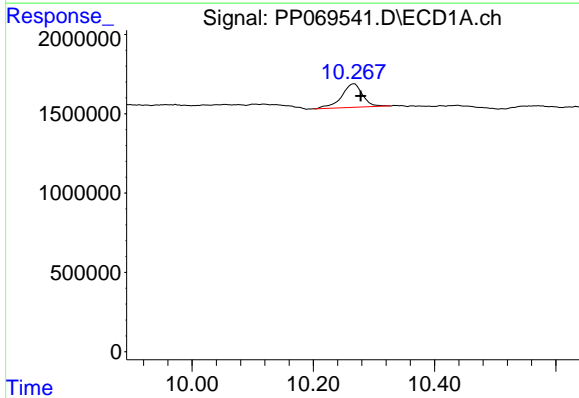
R.T.: 4.534 min  
 Delta R.T.: -0.004 min  
 Response: 3671309  
 Conc: 2.56 ng/ml

Instrument :  
 ECD\_P  
 ClientSampleId :



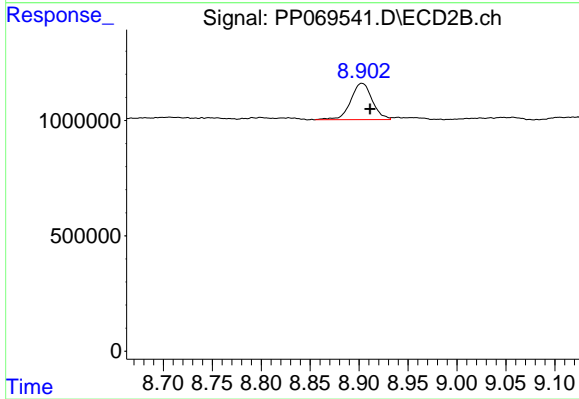
#1 Tetrachloro-m-xylene

R.T.: 3.839 min  
 Delta R.T.: -0.001 min  
 Response: 3127787  
 Conc: 3.50 ng/ml



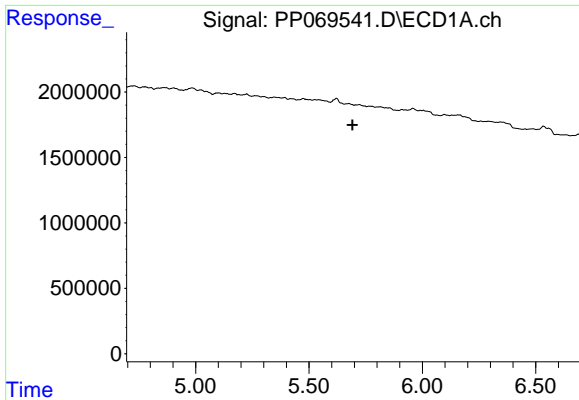
#2 Decachlorobiphenyl

R.T.: 10.268 min  
 Delta R.T.: -0.011 min  
 Response: 3548952  
 Conc: 3.25 ng/ml



#2 Decachlorobiphenyl

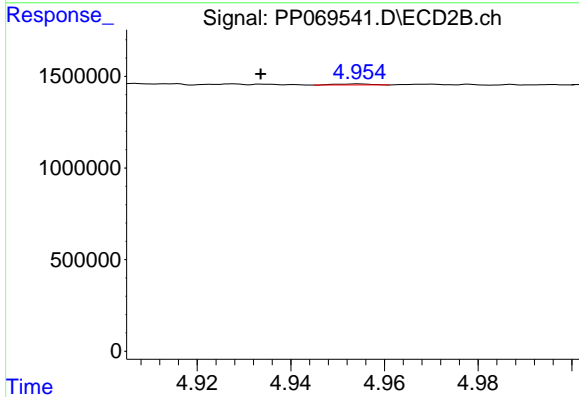
R.T.: 8.903 min  
 Delta R.T.: -0.008 min  
 Response: 2403360  
 Conc: 2.15 ng/ml



#3 AR-1016-1

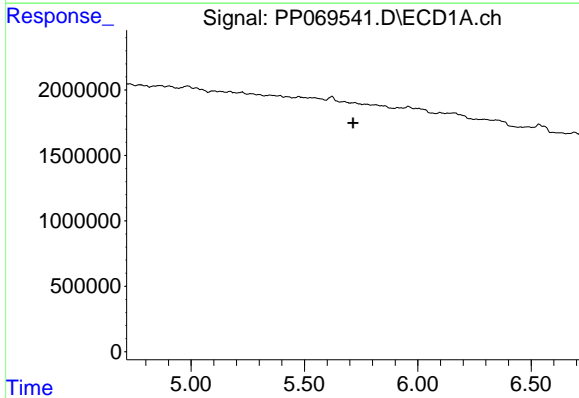
R.T.: 0.000 min  
 Exp R.T.: 5.692 min  
 Response: 0  
 Conc: N.D.

Instrument :  
 ECD\_P  
 ClientSampleId :



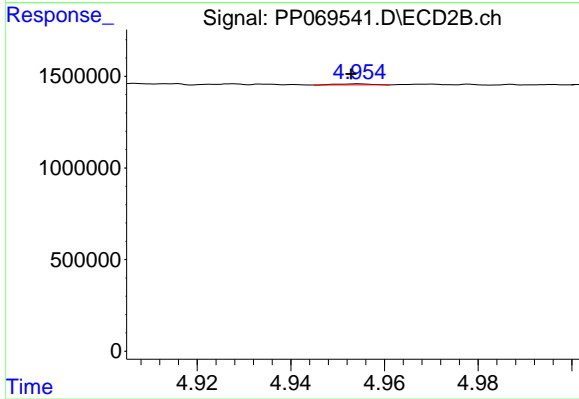
#3 AR-1016-1

R.T.: 4.954 min  
 Delta R.T.: 0.021 min  
 Response: 30331  
 Conc: 0.93 ng/ml



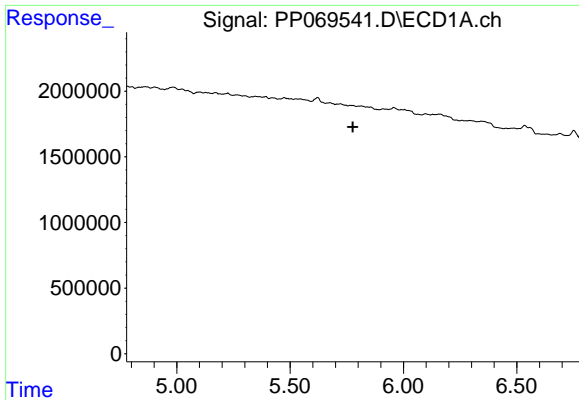
#4 AR-1016-2

R.T.: 0.000 min  
 Exp R.T.: 5.714 min  
 Response: 0  
 Conc: N.D.



#4 AR-1016-2

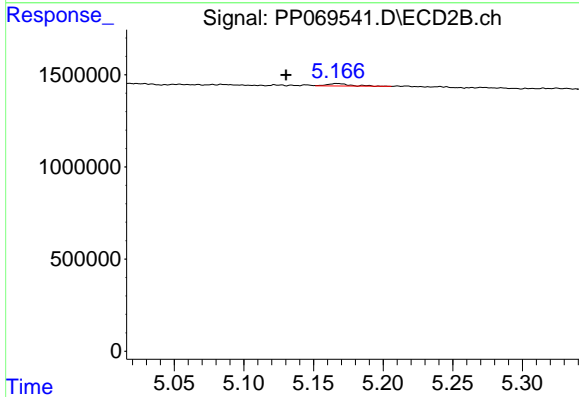
R.T.: 4.954 min  
 Delta R.T.: 0.001 min  
 Response: 30331  
 Conc: 0.67 ng/ml



#5 AR-1016-3

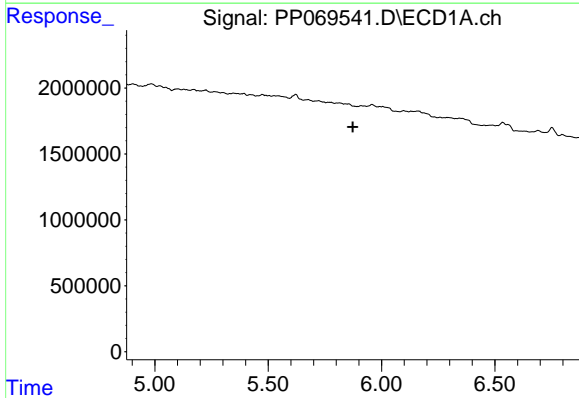
R.T.: 0.000 min  
 Exp R.T. : 5.776 min  
 Response: 0  
 Conc: N.D.

Instrument :  
 ECD\_P  
 ClientSampleId :



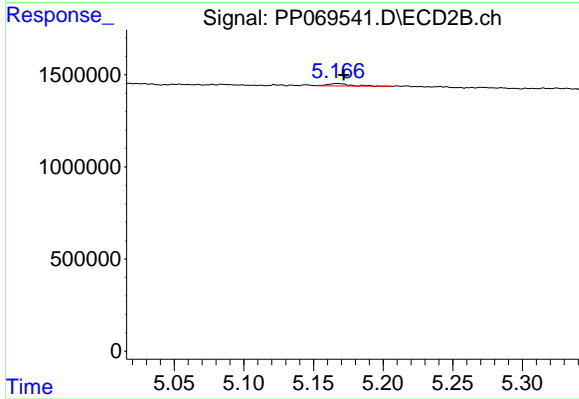
#5 AR-1016-3

R.T.: 5.167 min  
 Delta R.T.: 0.037 min  
 Response: 143883  
 Conc: 5.78 ng/ml



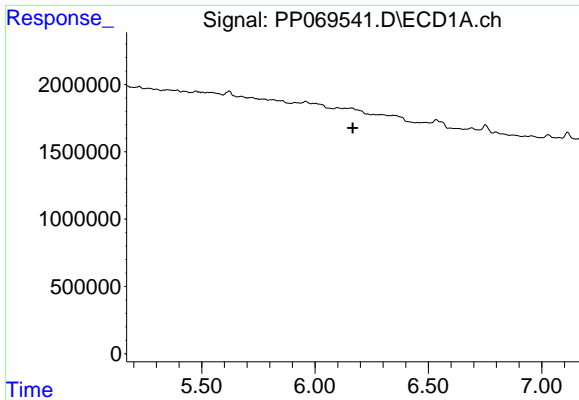
#6 AR-1016-4

R.T.: 0.000 min  
 Exp R.T. : 5.874 min  
 Response: 0  
 Conc: N.D.



#6 AR-1016-4

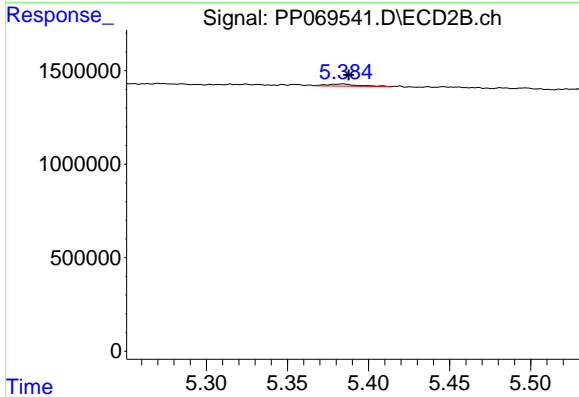
R.T.: 5.167 min  
 Delta R.T.: -0.004 min  
 Response: 143883  
 Conc: 7.12 ng/ml



#7 AR-1016-5

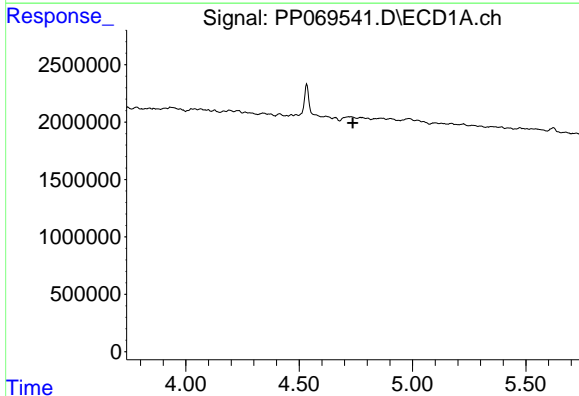
R.T.: 0.000 min  
 Exp R.T.: 6.167 min  
 Response: 0  
 Conc: N.D.

Instrument :  
 ECD\_P  
 ClientSampleId :



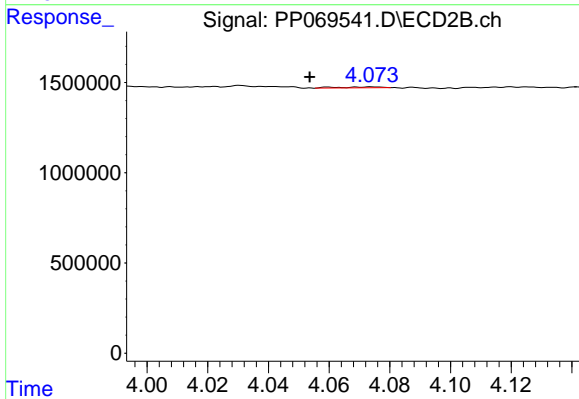
#7 AR-1016-5

R.T.: 5.384 min  
 Delta R.T.: -0.004 min  
 Response: 162506  
 Conc: 6.06 ng/ml



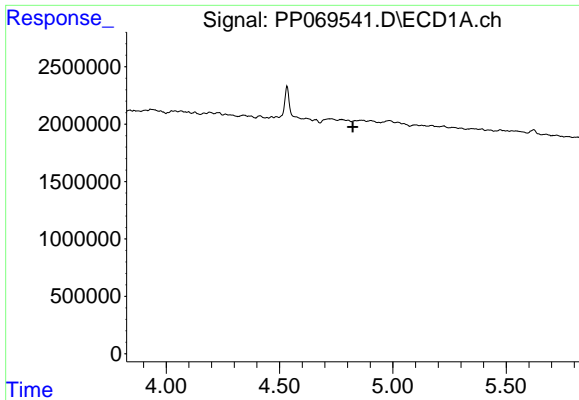
#8 AR-1221-1

R.T.: 0.000 min  
 Exp R.T.: 4.737 min  
 Response: 0  
 Conc: N.D.



#8 AR-1221-1

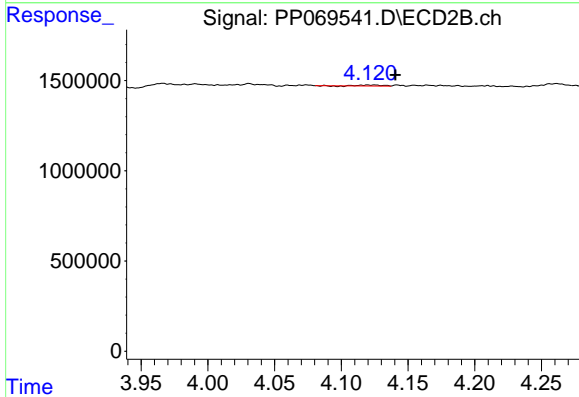
R.T.: 4.074 min  
 Delta R.T.: 0.021 min  
 Response: 40800  
 Conc: 3.31 ng/ml



#9 AR-1221-2

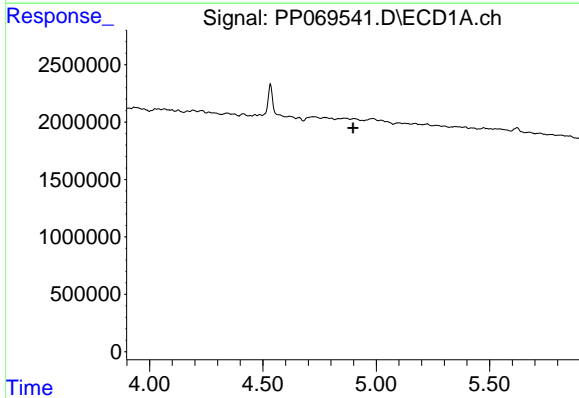
R.T.: 0.000 min  
 Exp R.T.: 4.823 min  
 Response: 0  
 Conc: N.D.

Instrument :  
 ECD\_P  
 ClientSampleId :



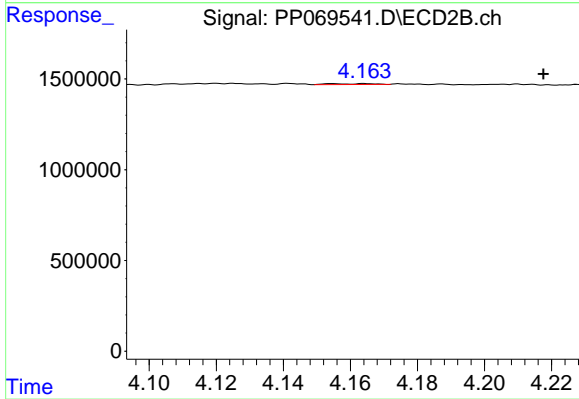
#9 AR-1221-2

R.T.: 4.120 min  
 Delta R.T.: -0.020 min  
 Response: 48532  
 Conc: 5.01 ng/ml



#10 AR-1221-3

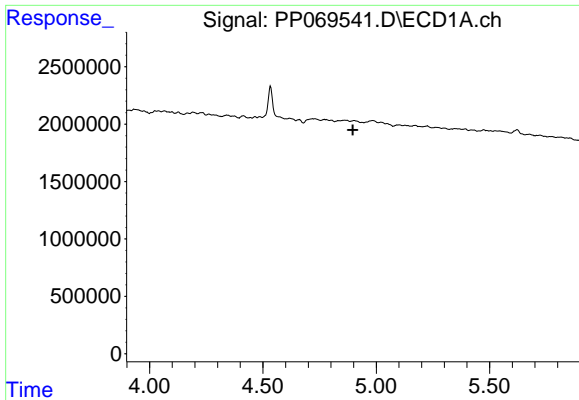
R.T.: 0.000 min  
 Exp R.T.: 4.899 min  
 Response: 0  
 Conc: N.D.



#10 AR-1221-3

R.T.: 4.164 min  
 Delta R.T.: -0.053 min  
 Response: 39939  
 Conc: 1.37 ng/ml

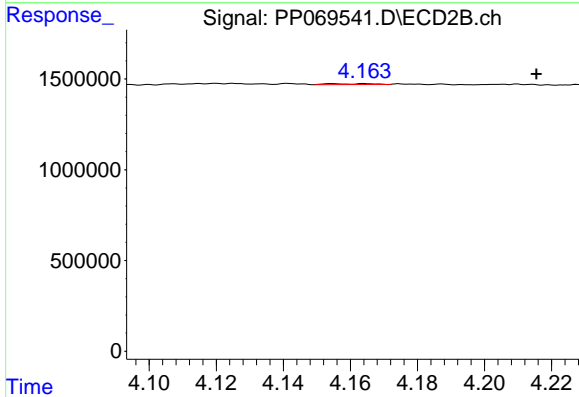




#11 AR-1232-1

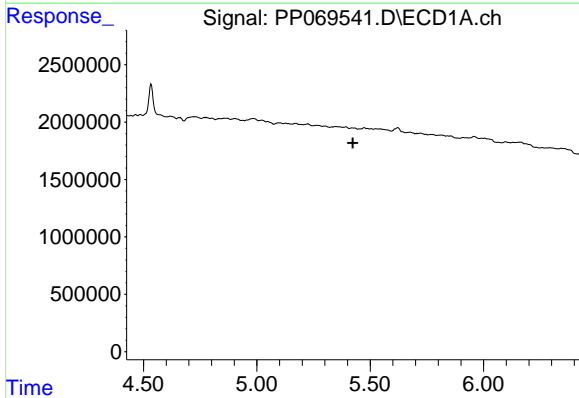
R.T.: 0.000 min  
 Exp R.T. : 4.897 min  
 Response: 0  
 Conc: N.D.

Instrument :  
 ECD\_P  
 ClientSampleId :



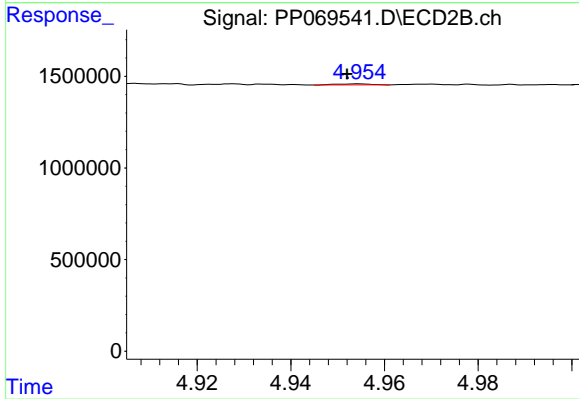
#11 AR-1232-1

R.T.: 4.164 min  
 Delta R.T.: -0.051 min  
 Response: 39939  
 Conc: 1.70 ng/ml



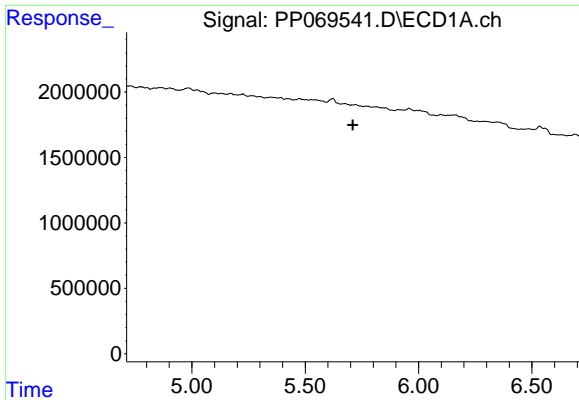
#12 AR-1232-2

R.T.: 0.000 min  
 Exp R.T. : 5.424 min  
 Response: 0  
 Conc: N.D.



#12 AR-1232-2

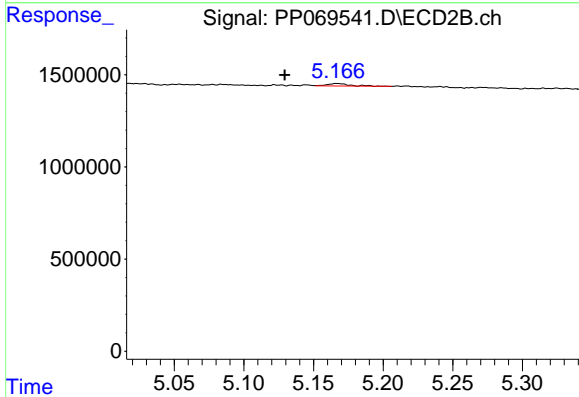
R.T.: 4.954 min  
 Delta R.T.: 0.002 min  
 Response: 30331  
 Conc: 1.29 ng/ml



#13 AR-1232-3

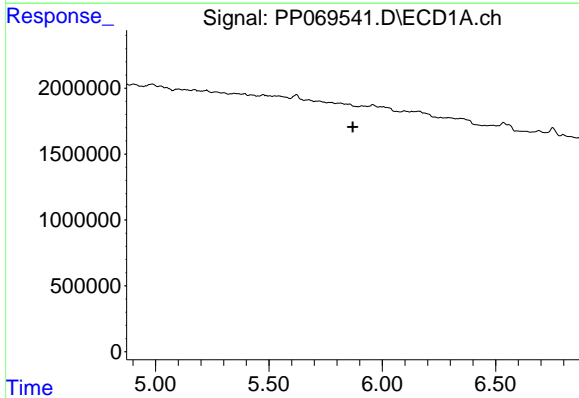
R.T.: 0.000 min  
 Exp R.T. : 5.710 min  
 Response: 0  
 Conc: N.D.

Instrument :  
 ECD\_P  
 ClientSampleId :



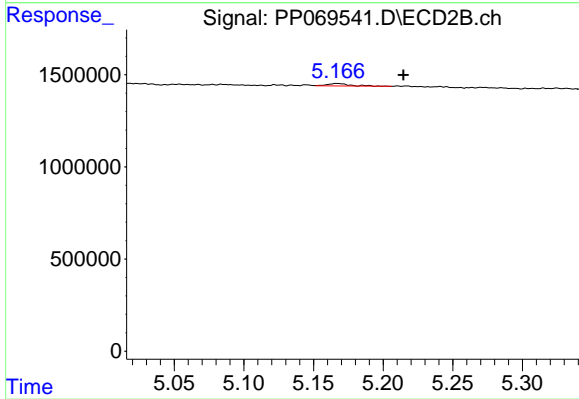
#13 AR-1232-3

R.T.: 5.167 min  
 Delta R.T.: 0.038 min  
 Response: 143883  
 Conc: 11.11 ng/ml



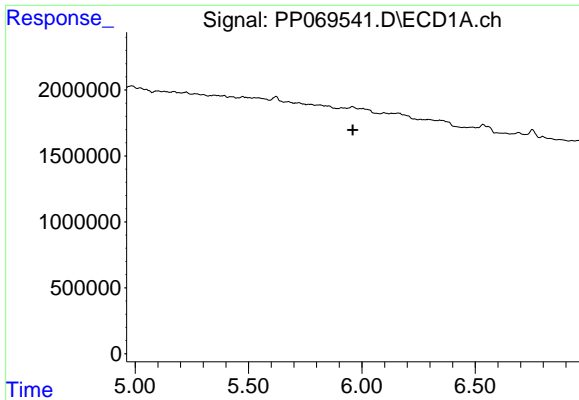
#14 AR-1232-4

R.T.: 0.000 min  
 Exp R.T. : 5.870 min  
 Response: 0  
 Conc: N.D.



#14 AR-1232-4

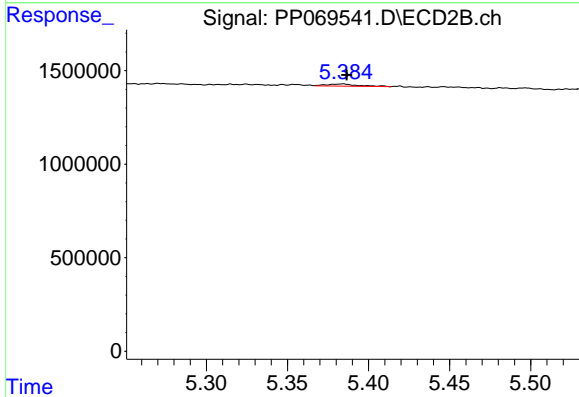
R.T.: 5.167 min  
 Delta R.T.: -0.047 min  
 Response: 143883  
 Conc: 12.98 ng/ml



#15 AR-1232-5

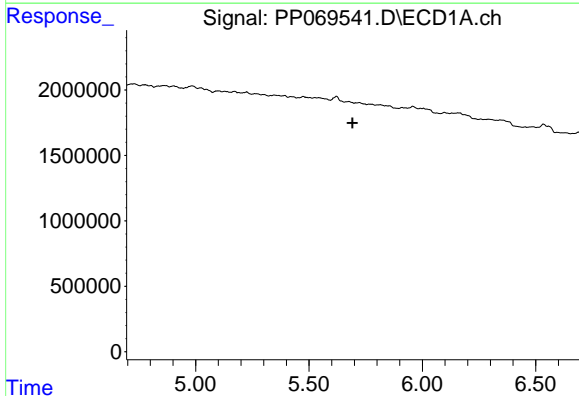
R.T.: 0.000 min  
 Exp R.T.: 5.960 min  
 Response: 0  
 Conc: N.D.

Instrument :  
 ECD\_P  
 ClientSampleId :



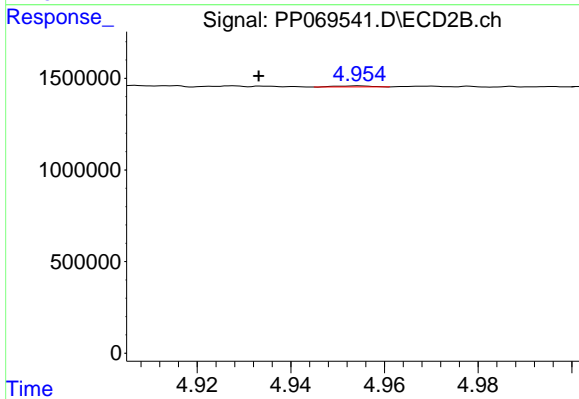
#15 AR-1232-5

R.T.: 5.384 min  
 Delta R.T.: -0.003 min  
 Response: 162506  
 Conc: 13.31 ng/ml



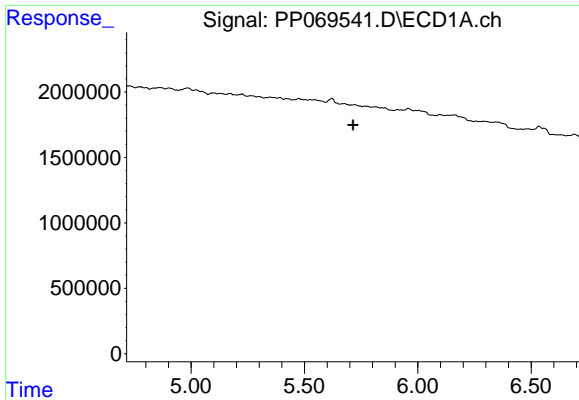
#16 AR-1242-1

R.T.: 0.000 min  
 Exp R.T.: 5.692 min  
 Response: 0  
 Conc: N.D.



#16 AR-1242-1

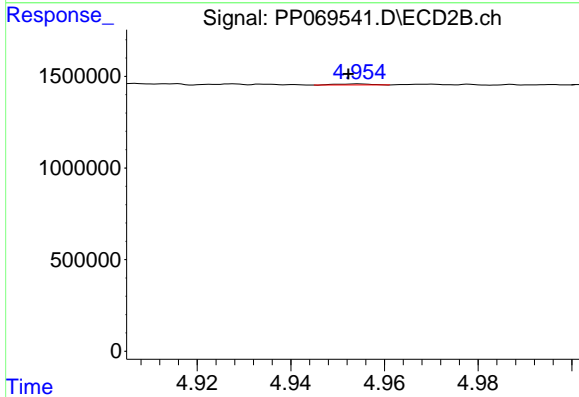
R.T.: 4.954 min  
 Delta R.T.: 0.021 min  
 Response: 30331  
 Conc: 1.05 ng/ml



#17 AR-1242-2

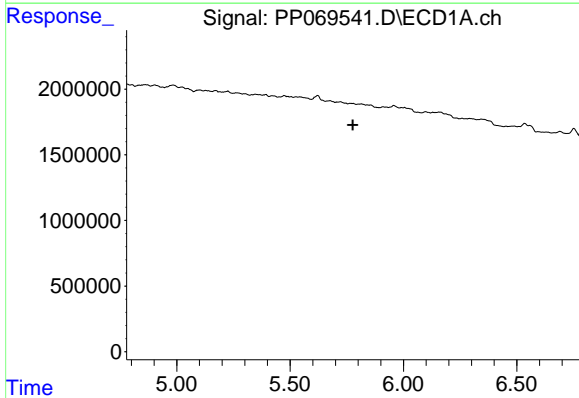
R.T.: 0.000 min  
 Exp R.T. : 5.714 min  
 Response: 0  
 Conc: N.D.

Instrument :  
 ECD\_P  
 ClientSampleId :



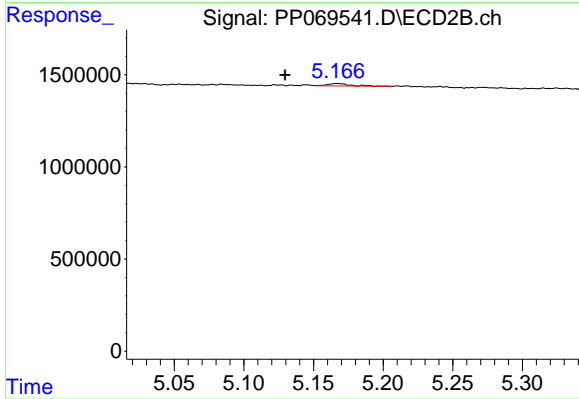
#17 AR-1242-2

R.T.: 4.954 min  
 Delta R.T.: 0.002 min  
 Response: 30331  
 Conc: 0.77 ng/ml



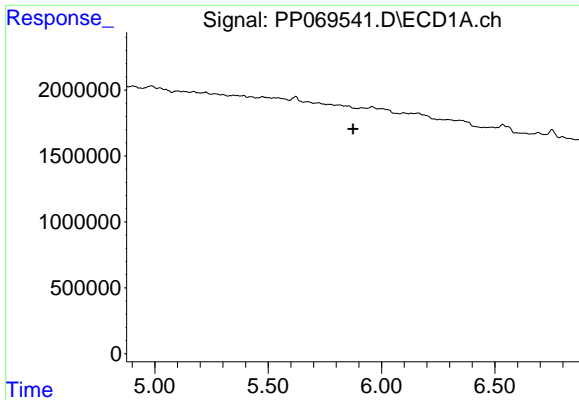
#18 AR-1242-3

R.T.: 0.000 min  
 Exp R.T. : 5.776 min  
 Response: 0  
 Conc: N.D.



#18 AR-1242-3

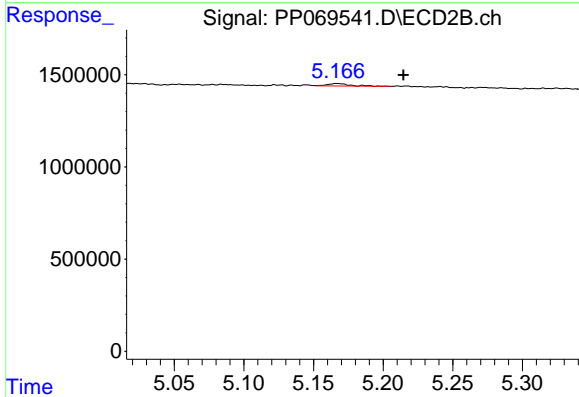
R.T.: 5.167 min  
 Delta R.T.: 0.038 min  
 Response: 143883  
 Conc: 6.39 ng/ml



#19 AR-1242-4

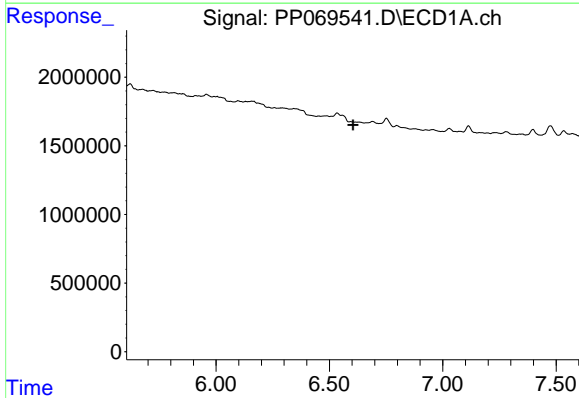
R.T.: 0.000 min  
 Exp R.T. : 5.874 min  
 Response: 0  
 Conc: N.D.

Instrument :  
 ECD\_P  
 ClientSampleId :



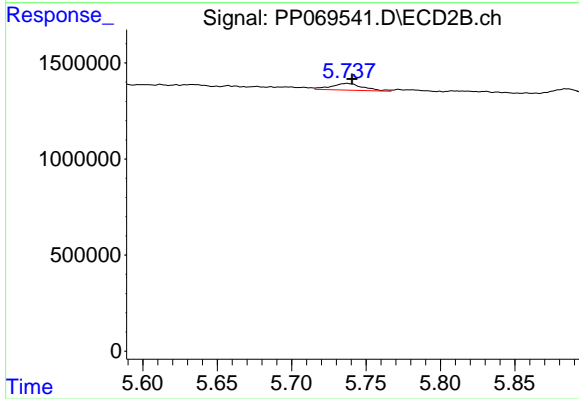
#19 AR-1242-4

R.T.: 5.167 min  
 Delta R.T.: -0.047 min  
 Response: 143883  
 Conc: 6.67 ng/ml



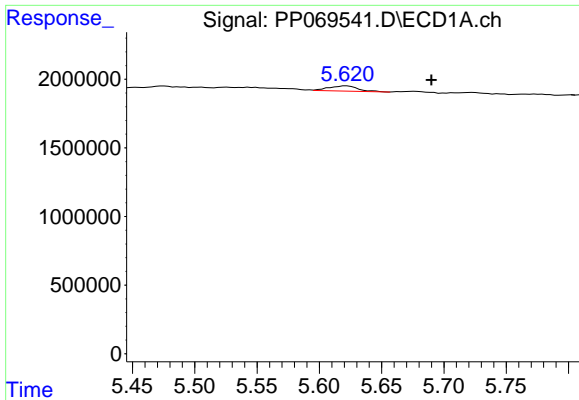
#20 AR-1242-5

R.T.: 0.000 min  
 Exp R.T. : 6.605 min  
 Response: 0  
 Conc: N.D.



#20 AR-1242-5

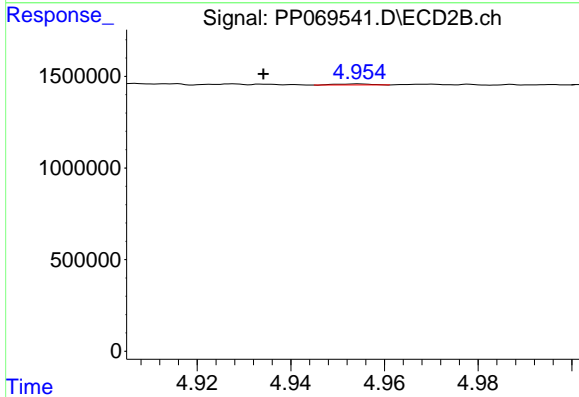
R.T.: 5.737 min  
 Delta R.T.: -0.003 min  
 Response: 522357  
 Conc: 18.16 ng/ml



#21 AR-1248-1

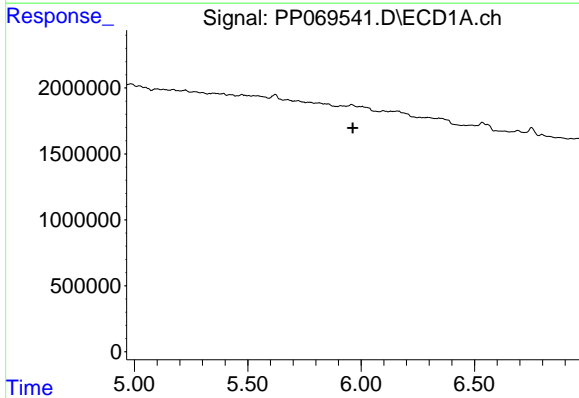
R.T.: 5.622 min  
 Delta R.T.: -0.068 min  
 Response: 629365  
 Conc: 19.40 ng/ml

Instrument :  
 ECD\_P  
 ClientSampleId :



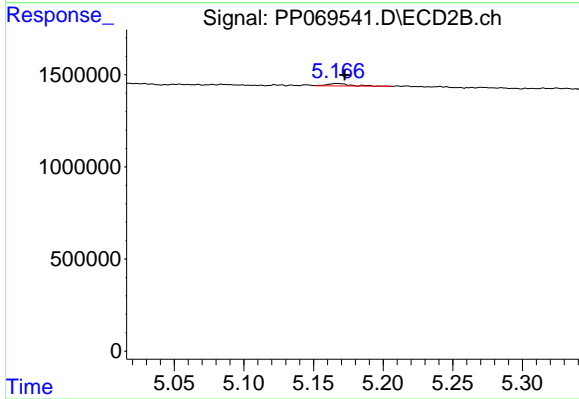
#21 AR-1248-1

R.T.: 4.954 min  
 Delta R.T.: 0.020 min  
 Response: 30331  
 Conc: 1.38 ng/ml



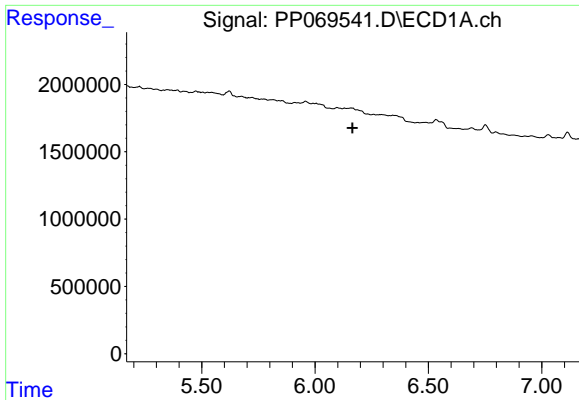
#22 AR-1248-2

R.T.: 0.000 min  
 Exp R.T. : 5.963 min  
 Response: 0  
 Conc: N.D.



#22 AR-1248-2

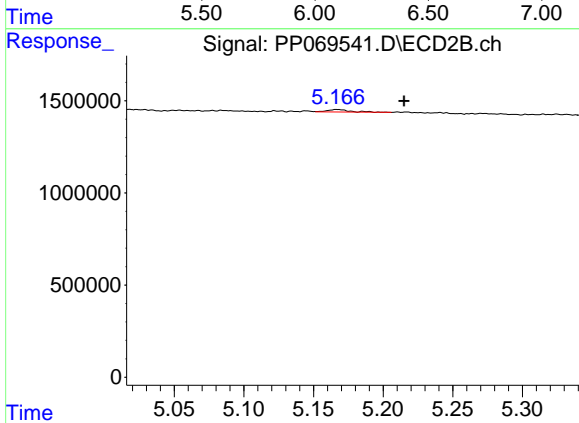
R.T.: 5.167 min  
 Delta R.T.: -0.005 min  
 Response: 143883  
 Conc: 4.79 ng/ml



#23 AR-1248-3

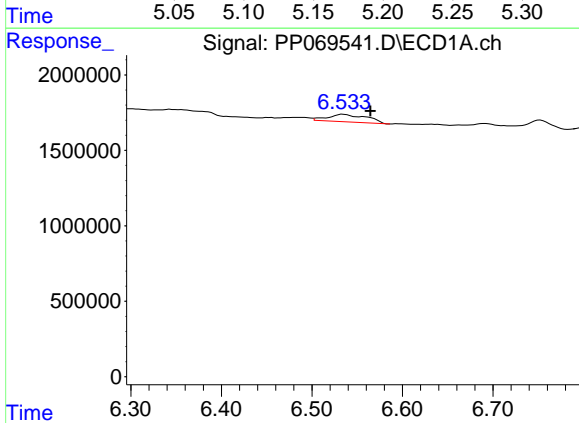
R.T.: 0.000 min  
 Exp R.T.: 6.166 min  
 Response: 0  
 Conc: N.D.

Instrument :  
 ECD\_P  
 ClientSampleId :



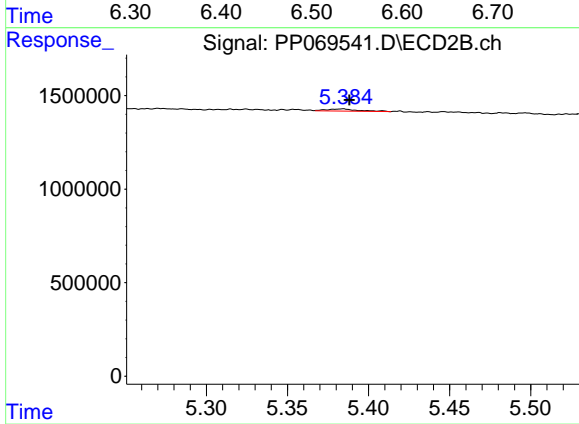
#23 AR-1248-3

R.T.: 5.167 min  
 Delta R.T.: -0.048 min  
 Response: 143883  
 Conc: 4.64 ng/ml



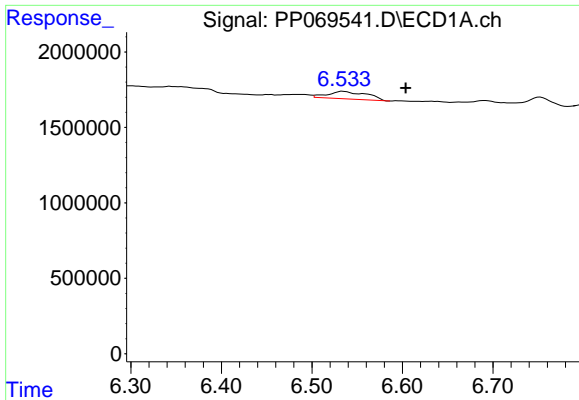
#24 AR-1248-4

R.T.: 6.534 min  
 Delta R.T.: -0.030 min  
 Response: 1495779  
 Conc: 27.14 ng/ml



#24 AR-1248-4

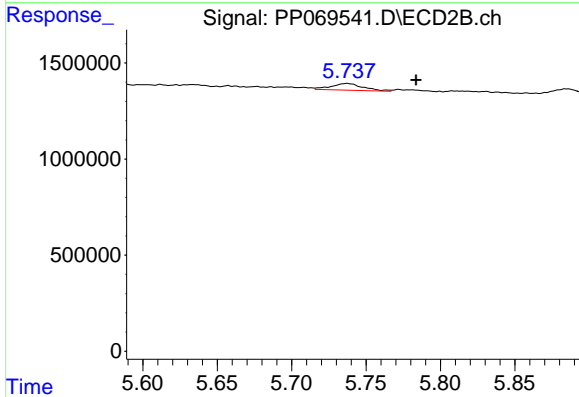
R.T.: 5.384 min  
 Delta R.T.: -0.004 min  
 Response: 162506  
 Conc: 4.40 ng/ml



#25 AR-1248-5

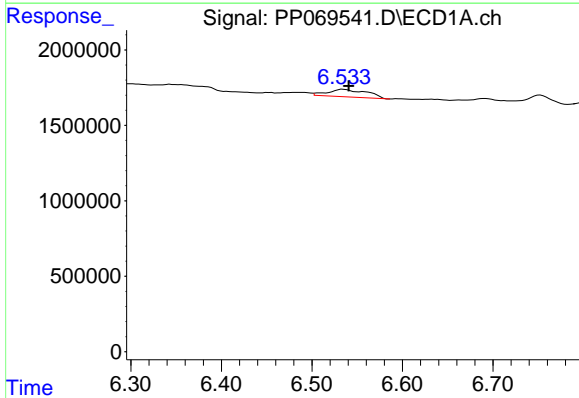
R.T.: 6.534 min  
Delta R.T.: -0.070 min  
Response: 1495779  
Conc: 28.02 ng/ml

Instrument :  
ECD\_P  
ClientSampleId :



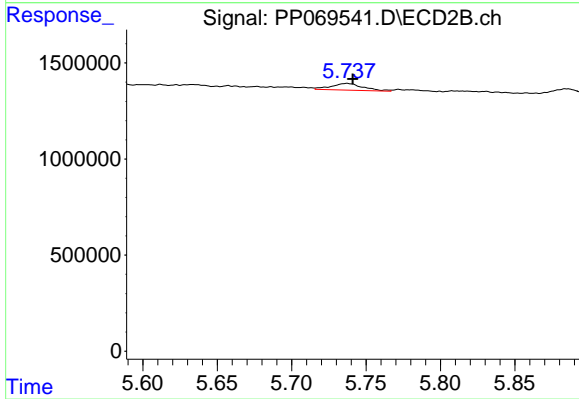
#25 AR-1248-5

R.T.: 5.737 min  
Delta R.T.: -0.047 min  
Response: 522357  
Conc: 13.97 ng/ml



#26 AR-1254-1

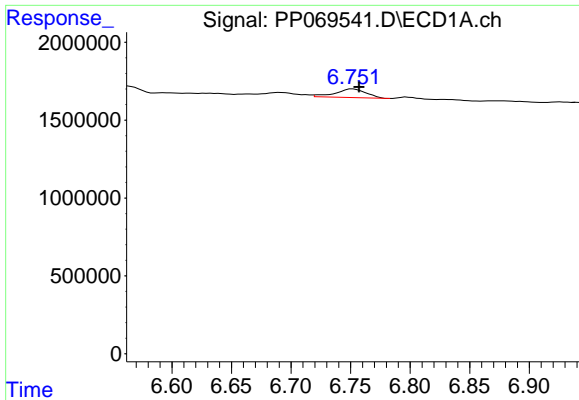
R.T.: 6.534 min  
Delta R.T.: -0.006 min  
Response: 1495779  
Conc: 25.85 ng/ml



#26 AR-1254-1

R.T.: 5.737 min  
Delta R.T.: -0.004 min  
Response: 522357  
Conc: 9.49 ng/ml

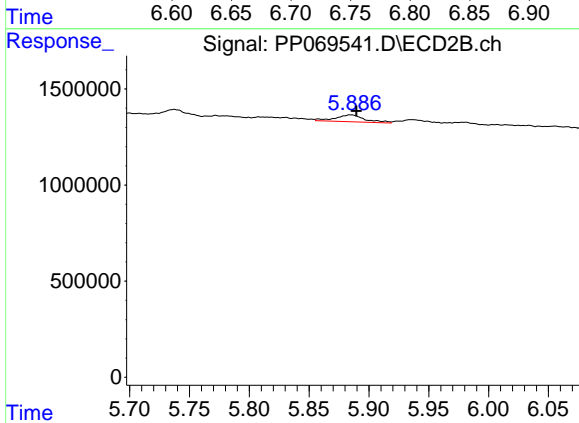




#27 AR-1254-2

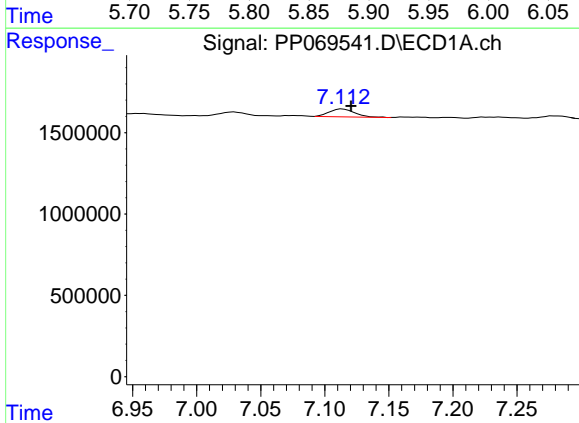
R.T.: 6.752 min  
 Delta R.T.: -0.005 min  
 Response: 995611  
 Conc: 12.41 ng/ml

Instrument :  
 ECD\_P  
 ClientSampleId :



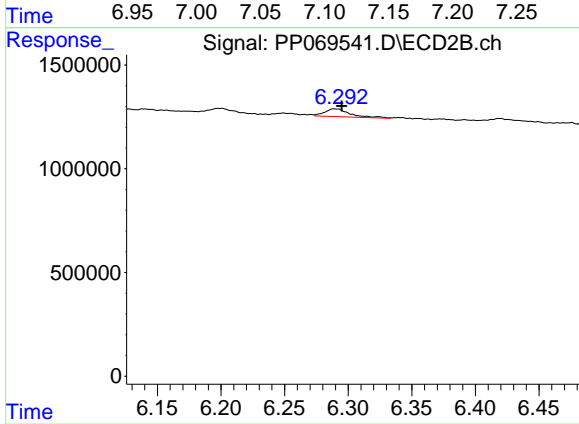
#27 AR-1254-2

R.T.: 5.885 min  
 Delta R.T.: -0.005 min  
 Response: 619668  
 Conc: 12.81 ng/ml



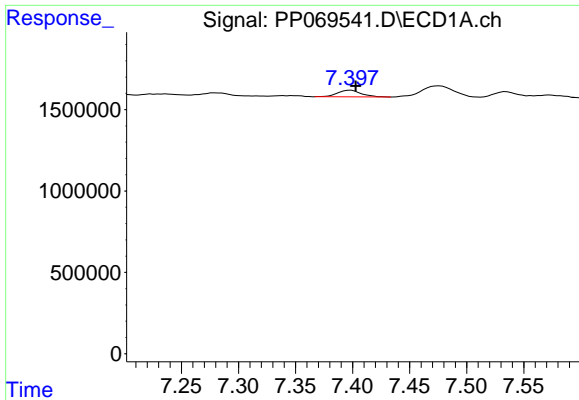
#28 AR-1254-3

R.T.: 7.114 min  
 Delta R.T.: -0.007 min  
 Response: 669266  
 Conc: 7.94 ng/ml



#28 AR-1254-3

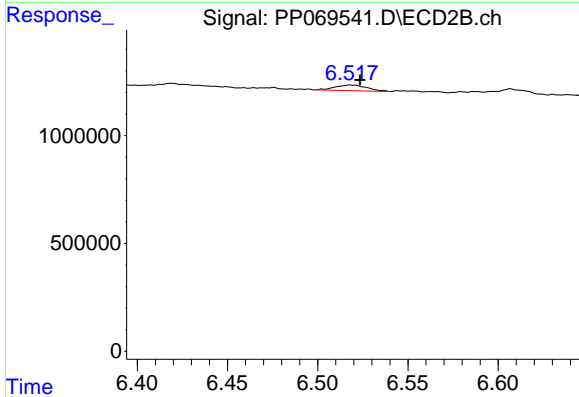
R.T.: 6.289 min  
 Delta R.T.: -0.006 min  
 Response: 532596  
 Conc: 7.02 ng/ml



#29 AR-1254-4

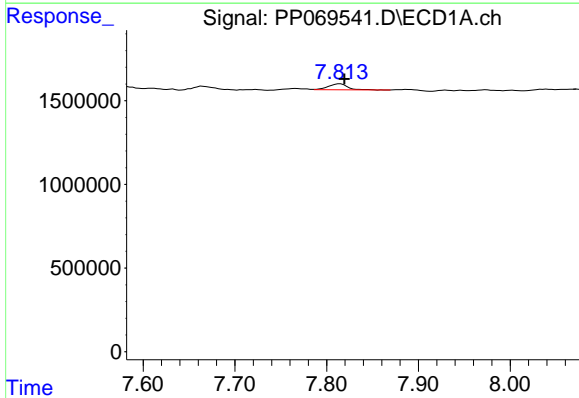
R.T.: 7.398 min  
 Delta R.T.: -0.004 min  
 Response: 601832  
 Conc: 8.83 ng/ml

Instrument :  
 ECD\_P  
 ClientSampleId :



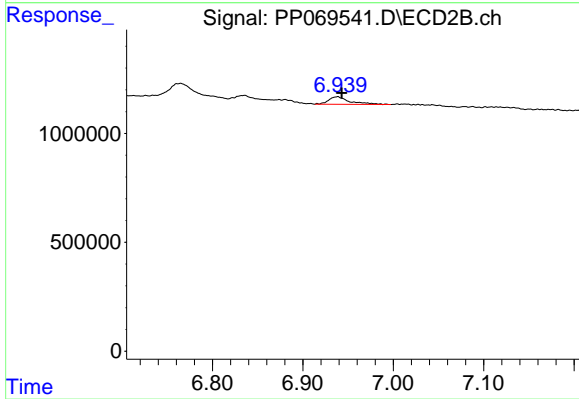
#29 AR-1254-4

R.T.: 6.519 min  
 Delta R.T.: -0.005 min  
 Response: 322449  
 Conc: 6.29 ng/ml



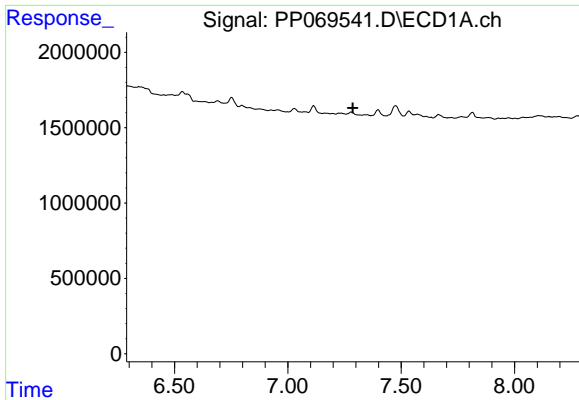
#30 AR-1254-5

R.T.: 7.815 min  
 Delta R.T.: -0.005 min  
 Response: 515594  
 Conc: 7.58 ng/ml



#30 AR-1254-5

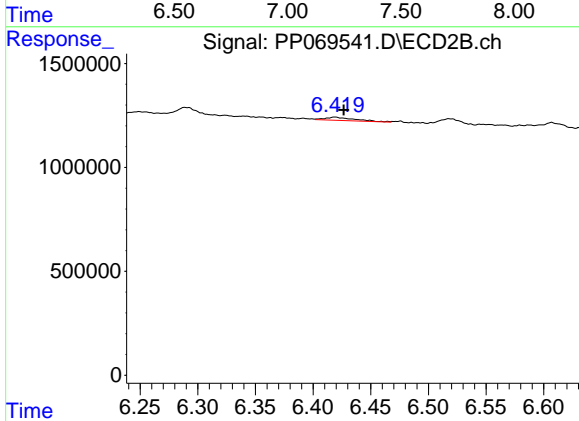
R.T.: 6.938 min  
 Delta R.T.: -0.005 min  
 Response: 557582  
 Conc: 8.38 ng/ml



#31 AR-1260-1

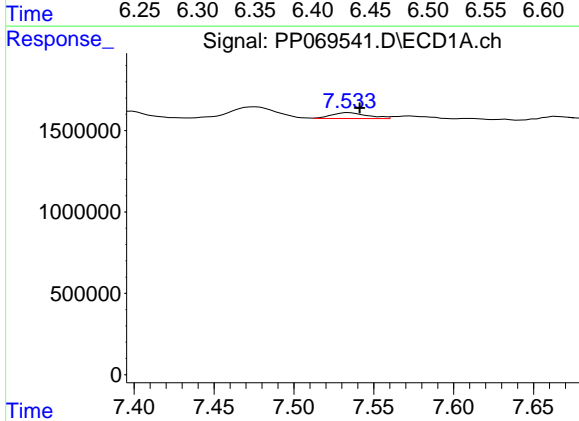
R.T.: 0.000 min  
 Exp R.T.: 7.287 min  
 Response: 0  
 Conc: N.D.

Instrument :  
 ECD\_P  
 ClientSampleId :



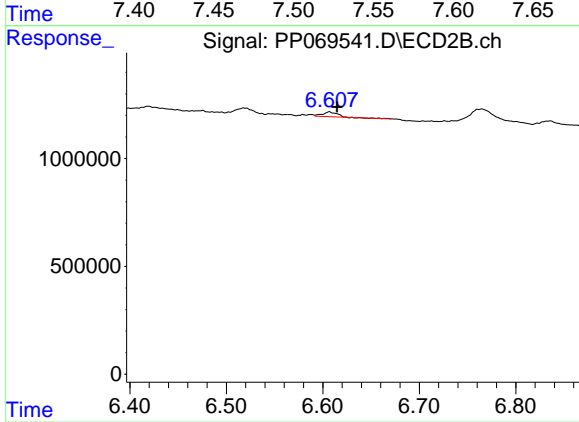
#31 AR-1260-1

R.T.: 6.419 min  
 Delta R.T.: -0.007 min  
 Response: 273367  
 Conc: 5.67 ng/ml



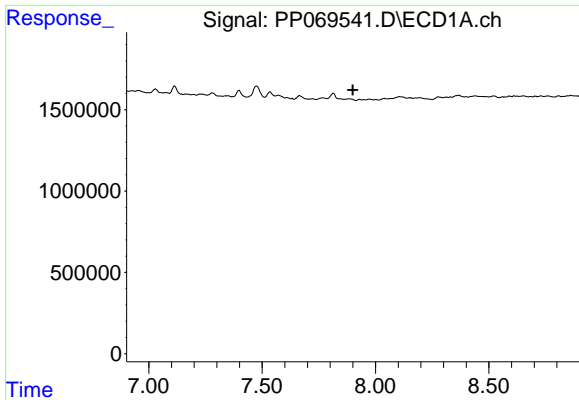
#32 AR-1260-2

R.T.: 7.535 min  
 Delta R.T.: -0.007 min  
 Response: 559623  
 Conc: 7.19 ng/ml



#32 AR-1260-2

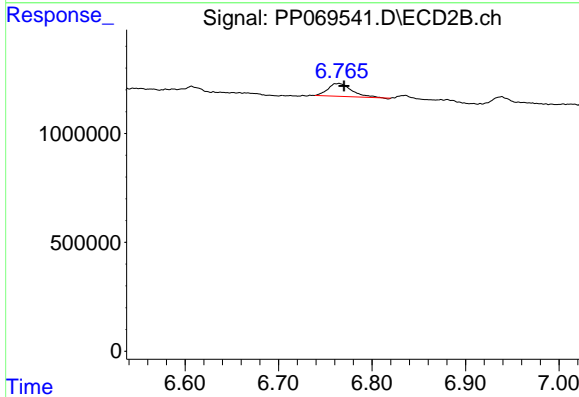
R.T.: 6.607 min  
 Delta R.T.: -0.008 min  
 Response: 125123  
 Conc: 2.04 ng/ml



#33 AR-1260-3

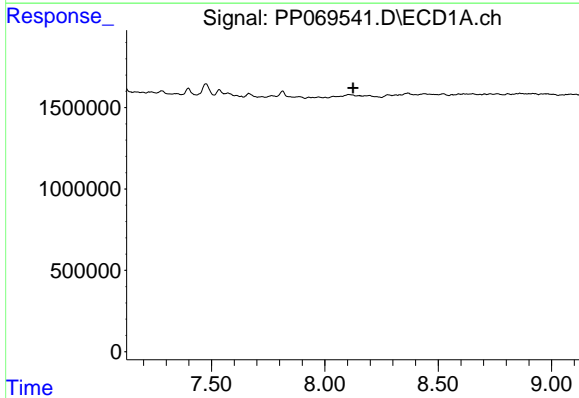
R.T.: 0.000 min  
 Exp R.T. : 7.900 min  
 Response: 0  
 Conc: N.D.

Instrument :  
 ECD\_P  
 ClientSampleId :



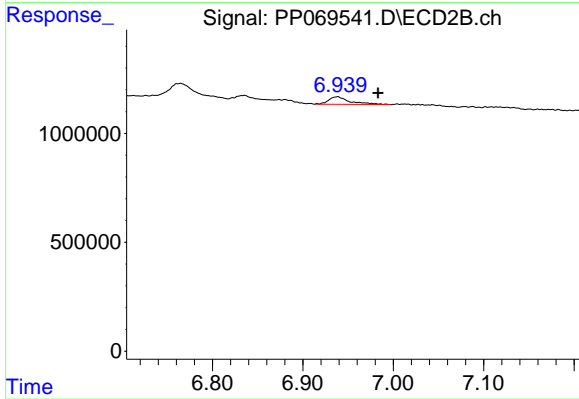
#33 AR-1260-3

R.T.: 6.765 min  
 Delta R.T.: -0.005 min  
 Response: 1024442  
 Conc: 17.03 ng/ml



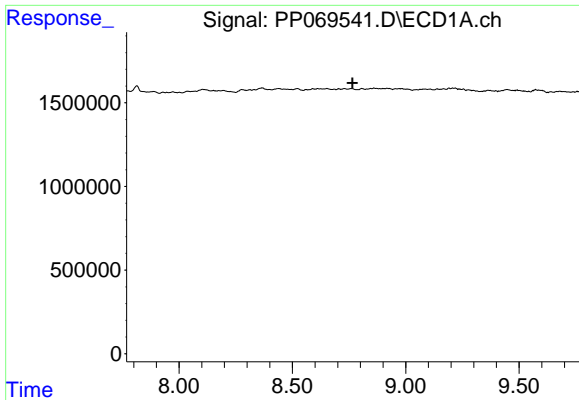
#36 AR-1262-1

R.T.: 0.000 min  
 Exp R.T. : 8.124 min  
 Response: 0  
 Conc: N.D.



#36 AR-1262-1

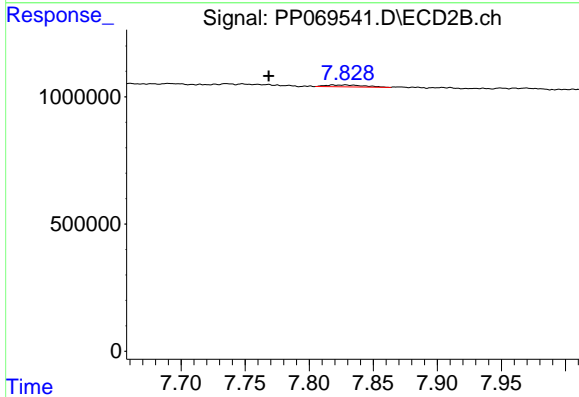
R.T.: 6.938 min  
 Delta R.T.: -0.045 min  
 Response: 557582  
 Conc: 7.85 ng/ml



#38 AR-1262-3

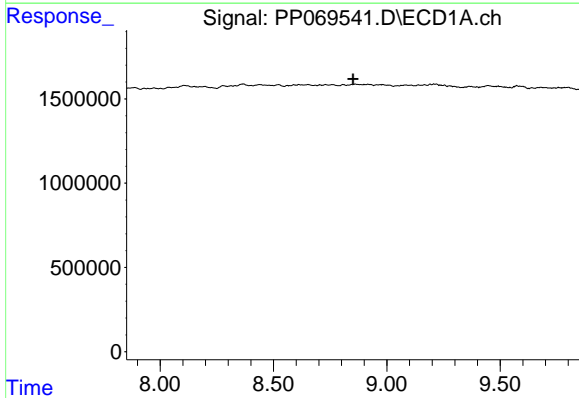
R.T.: 0.000 min  
 Exp R.T. : 8.766 min  
 Response: 0  
 Conc: N.D.

Instrument :  
 ECD\_P  
 ClientSampleId :



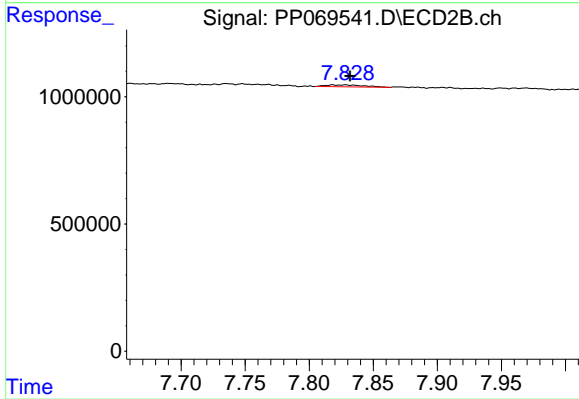
#38 AR-1262-3

R.T.: 7.819 min  
 Delta R.T.: 0.050 min  
 Response: 153626  
 Conc: 2.94 ng/ml



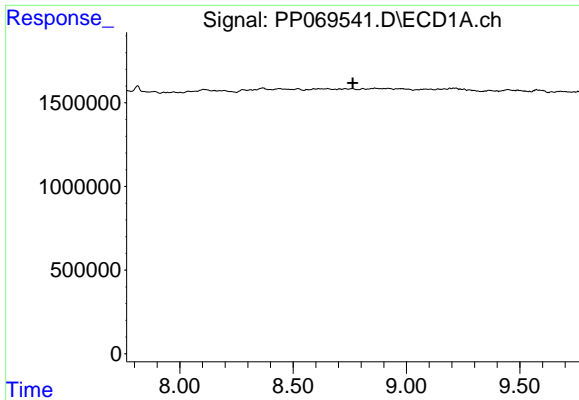
#39 AR-1262-4

R.T.: 0.000 min  
 Exp R.T. : 8.852 min  
 Response: 0  
 Conc: N.D.



#39 AR-1262-4

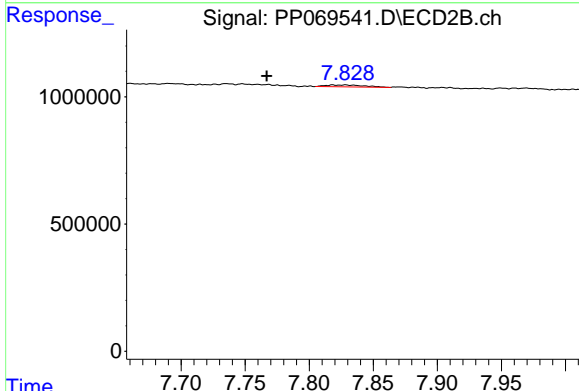
R.T.: 7.819 min  
 Delta R.T.: -0.013 min  
 Response: 153626  
 Conc: 1.66 ng/ml



#41 AR-1268-1

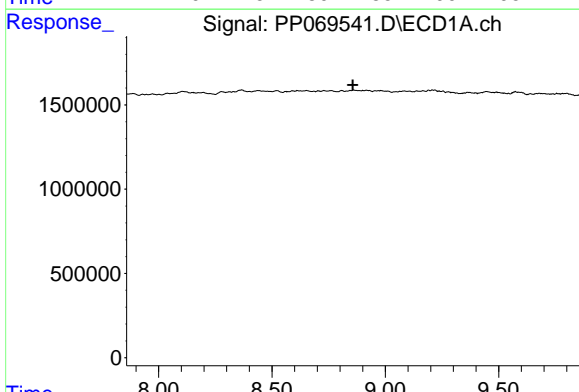
R.T.: 0.000 min  
 Exp R.T.: 8.763 min  
 Response: 0  
 Conc: N.D.

Instrument :  
 ECD\_P  
 ClientSampleId :



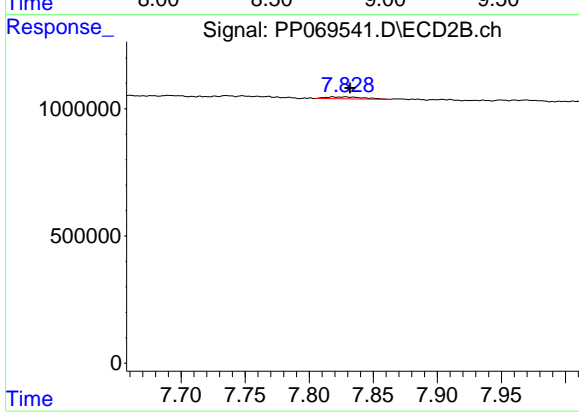
#41 AR-1268-1

R.T.: 7.819 min  
 Delta R.T.: 0.052 min  
 Response: 153626  
 Conc: 1.06 ng/ml



#42 AR-1268-2

R.T.: 0.000 min  
 Exp R.T.: 8.857 min  
 Response: 0  
 Conc: N.D.



#42 AR-1268-2

R.T.: 7.819 min  
 Delta R.T.: -0.013 min  
 Response: 153626  
 Conc: 1.16 ng/ml