

Data Path : P:\HPCHEM1\ECD P\Data\PP020618\  
 Data File : PP023511.D  
 Signal(s) : Signal #1: ECD1A.CH Signal #2: ECD2B.CH  
 Acq On : 06 Feb 2018 16:02  
 Operator : UA/AJ  
 Sample : J1436-12  
 Misc :  
 ALS Vial : 52 Sample Multiplier: 1

Integration File signal 1: autoint1.e  
 Integration File signal 2: autoint2.e  
 Quant Time: Feb 06 16:24:19 2018  
 Quant Method : P:\HPCHEM1\ECD\_P\methods\PP020618.M  
 Quant Title : 8080.M  
 QLast Update : Tue Feb 06 02:07:55 2018  
 Response via : Initial Calibration  
 Integrator: ChemStation 6890 Scale Mode: Large solvent peaks clipped

Volume Inj. : 2 ul  
 Signal #1 Phase : Rtx-CLPesticides Signal #2 Phase: Rtx-CLPesticides2  
 Signal #1 Info : 30M x 0.32mm x0.5 Signal #2 Info : 30M x 0.32mm x 0.25µm

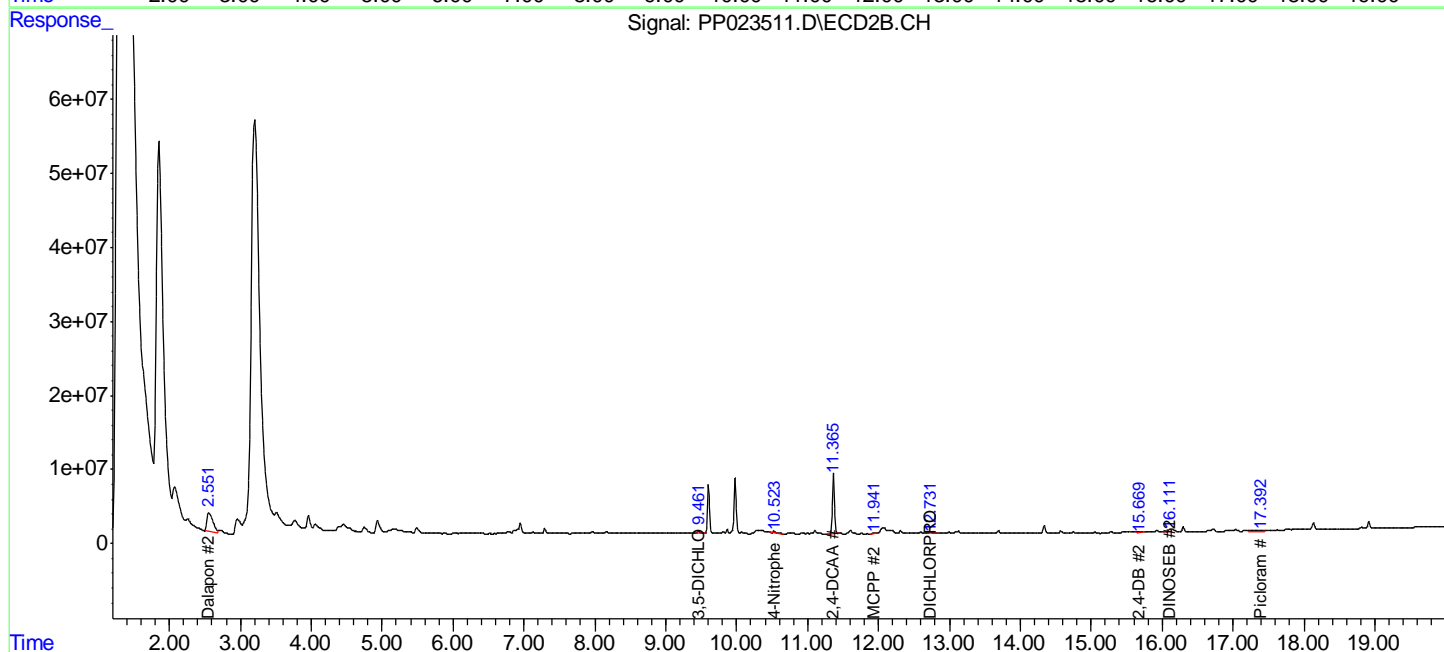
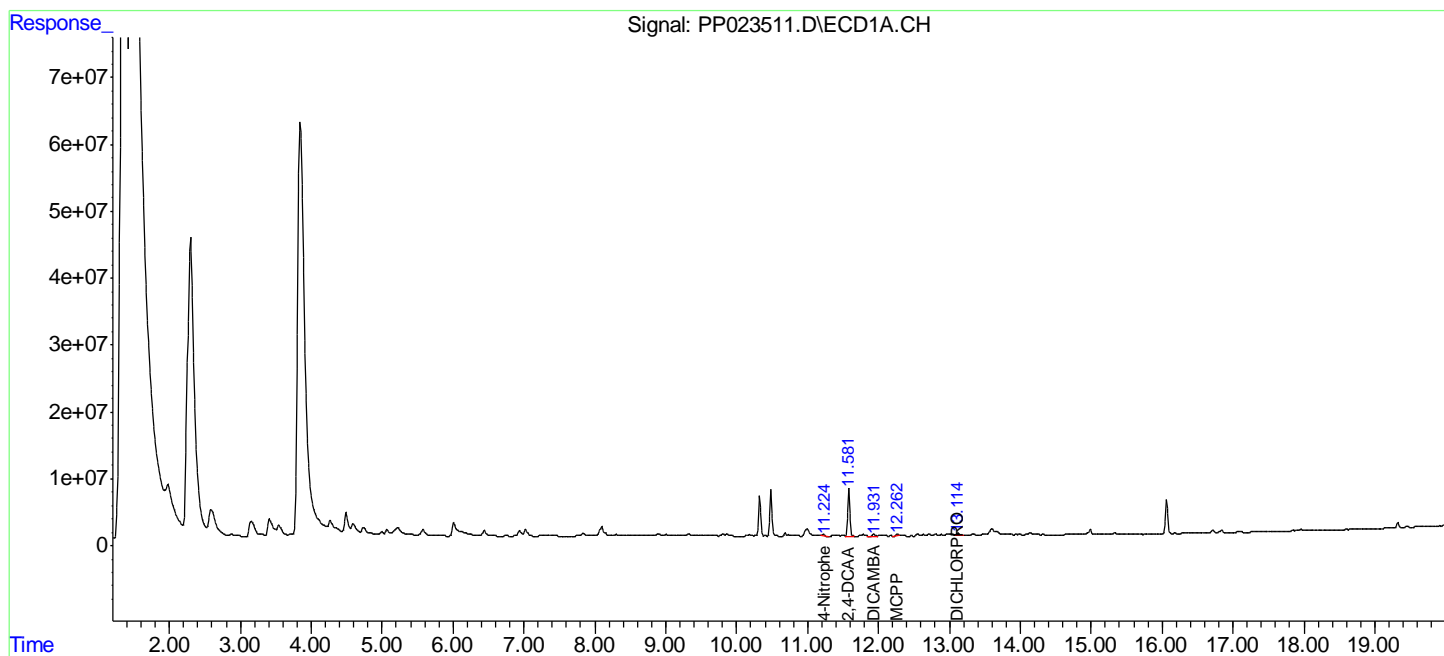
Compound	RT#1	RT#2	Resp#1	Resp#2	nq/ml	nq/ml
-----						
System Monitoring Compounds						
4) S 2,4-DCAA	11.583	11.366	151.0E6	159.5E6	294.680	263.080
Target Compounds						
1) T Dalapon	0.000	2.552	0	146.8E6	N.D.	177.353 #
2) T 3,5-DICHL...	0.000	9.462	0	6681340	N.D.	8.010 #
3) T 4-Nitroph...	11.225	10.525	5148162	8812208	11.973	18.988 #
5) T DICAMBA	11.933	0.000	6242163	0	2.903	N.D. #
6) T MCPPE	12.263	11.942	3123914	1553960	2.131	0.966 #
8) T DICHLORPROP	13.116	12.732	6914279	5374471	13.017	9.154 #
13) T 2,4-DB	0.000	15.671	0	2107454	N.D.	4.875 #
14) T DINOSEB	0.000	16.113	0	9048830	N.D.	3.679 #
15) T Picloram	0.000	17.394	0	19345937	N.D.	3.884 #
-----						

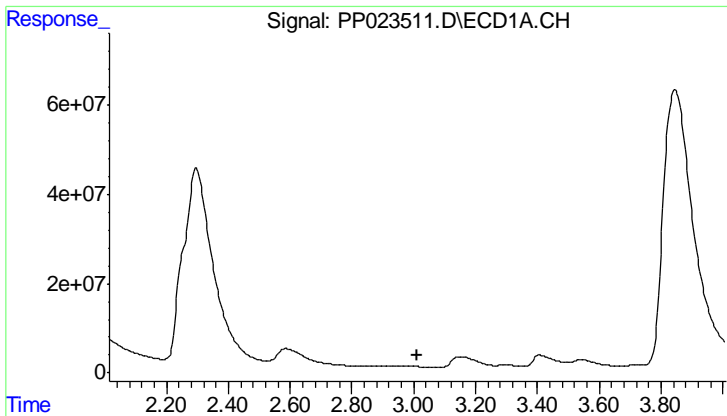
(f)=RT Delta > 1/2 Window (#)=Amounts differ by > 25% (m)=manual int.

Data Path : P:\HPCHEM1\ECD P\Data\PP020618\  
 Data File : PP023511.D  
 Signal(s) : Signal #1: ECD1A.CH Signal #2: ECD2B.CH  
 Acq On : 06 Feb 2018 16:02  
 Operator : UA/AJ  
 Sample : J1436-12  
 Misc :  
 ALS Vial : 52 Sample Multiplier: 1

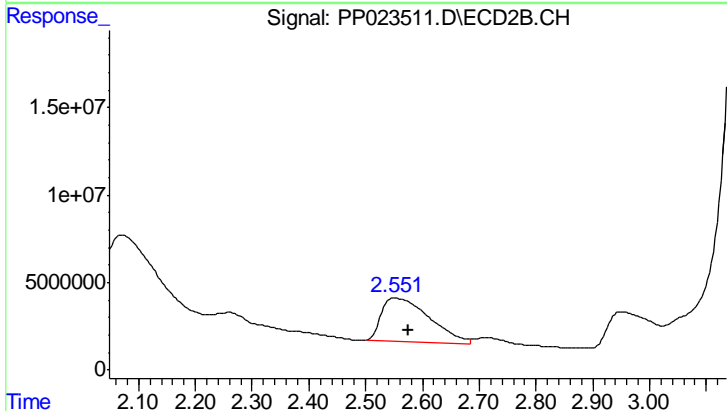
Integration File signal 1: autoint1.e  
 Integration File signal 2: autoint2.e  
 Quant Time: Feb 06 16:24:19 2018  
 Quant Method : P:\HPCHEM1\ECD\_P\methods\PP020618.M  
 Quant Title : 8080.M  
 QLast Update : Tue Feb 06 02:07:55 2018  
 Response via : Initial Calibration  
 Integrator: ChemStation 6890 Scale Mode: Large solvent peaks clipped

Volume Inj. : 2 ul  
 Signal #1 Phase : Rtx-CLPesticides Signal #2 Phase: Rtx-CLPesticides2  
 Signal #1 Info : 30M x 0.32mm x0.5 Signal #2 Info : 30M x 0.32mm x 0.25um

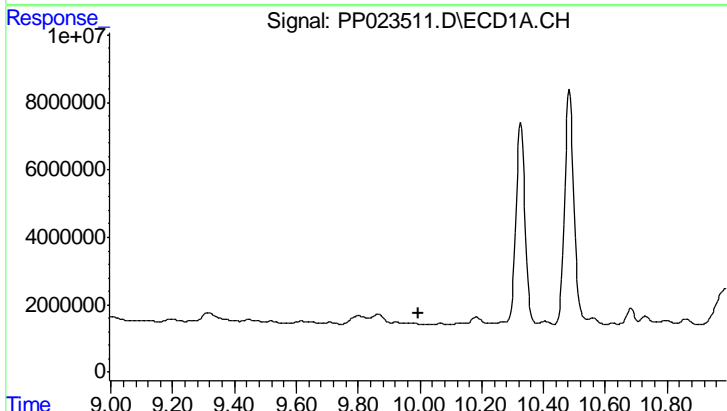




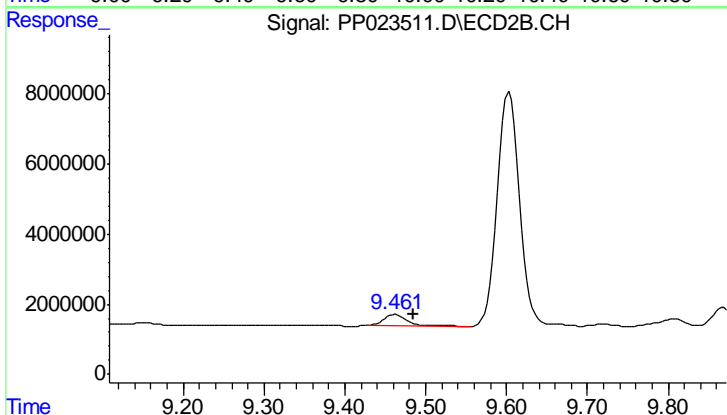
#1 Dalapon  
 R.T.: 0.000 min  
 Exp R.T.: 3.012 min  
 Response: 0  
 Conc: N.D.



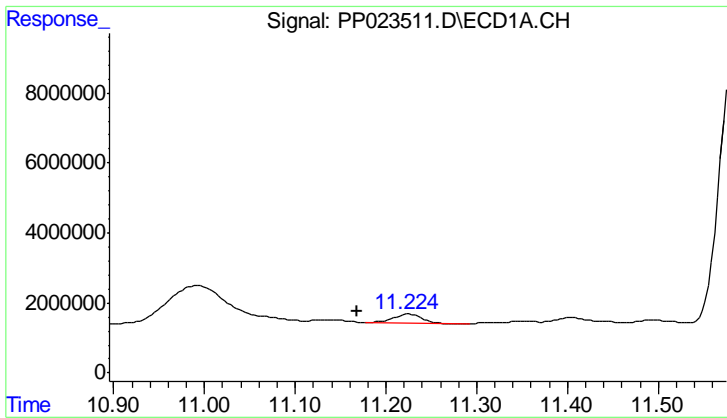
#1 Dalapon  
 R.T.: 2.552 min  
 Delta R.T.: -0.023 min  
 Response: 146796546  
 Conc: 177.35 ng/ml



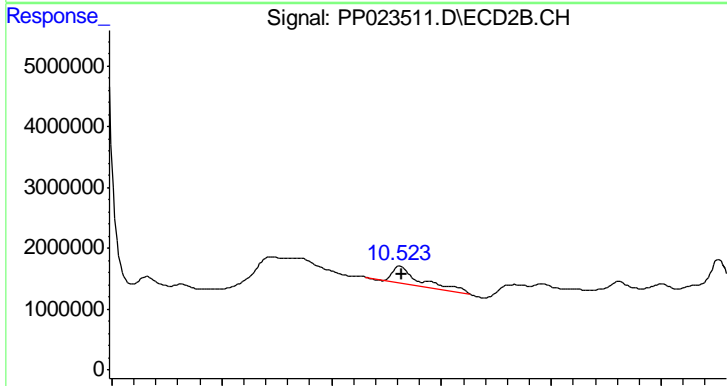
#2 3,5-DICHLOROBENZOIC ACID  
 R.T.: 0.000 min  
 Exp R.T.: 9.994 min  
 Response: 0  
 Conc: N.D.



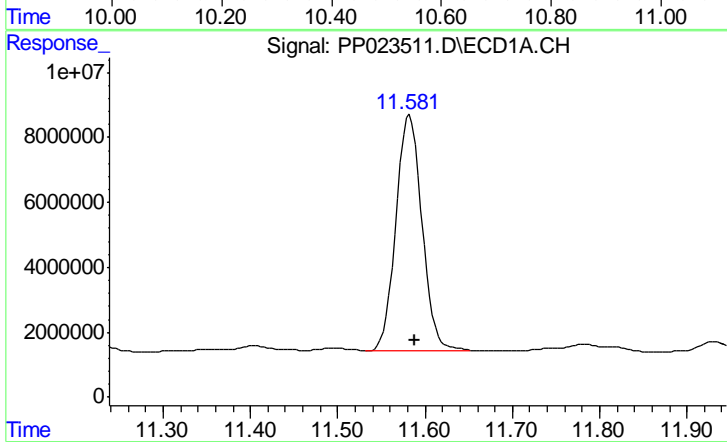
#2 3,5-DICHLOROBENZOIC ACID  
 R.T.: 9.462 min  
 Delta R.T.: -0.022 min  
 Response: 6681340  
 Conc: 8.01 ng/ml



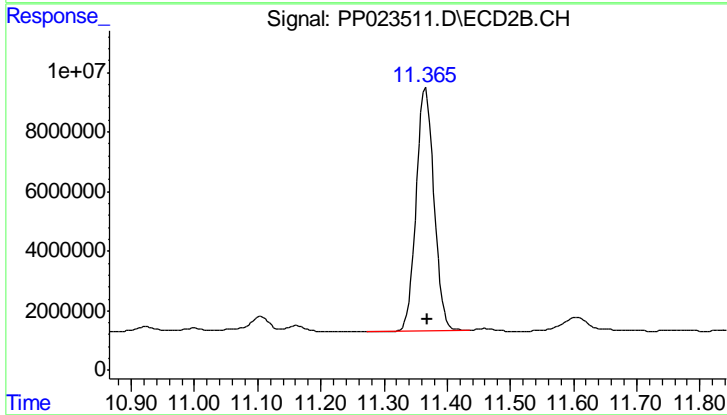
#3 4-Nitrophenol  
R.T.: 11.225 min  
Delta R.T.: 0.057 min  
Response: 5148162  
Conc: 11.97 ng/ml



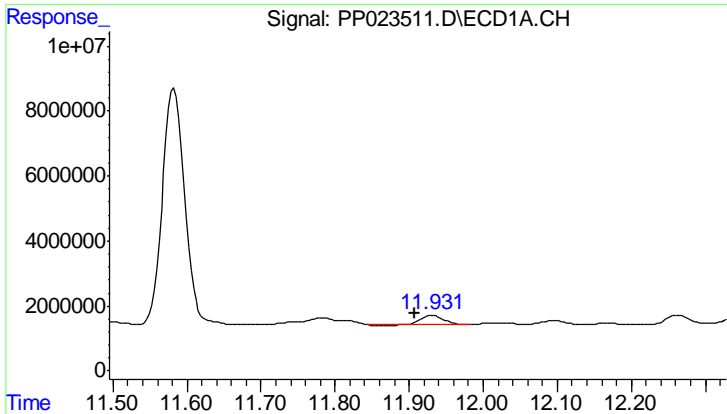
#3 4-Nitrophenol  
R.T.: 10.525 min  
Delta R.T.: -0.003 min  
Response: 8812208  
Conc: 18.99 ng/ml



#4 2,4-DCAA  
R.T.: 11.583 min  
Delta R.T.: -0.006 min  
Response: 151015057  
Conc: 294.68 ng/ml



#4 2,4-DCAA  
R.T.: 11.366 min  
Delta R.T.: -0.003 min  
Response: 159536688  
Conc: 263.08 ng/ml



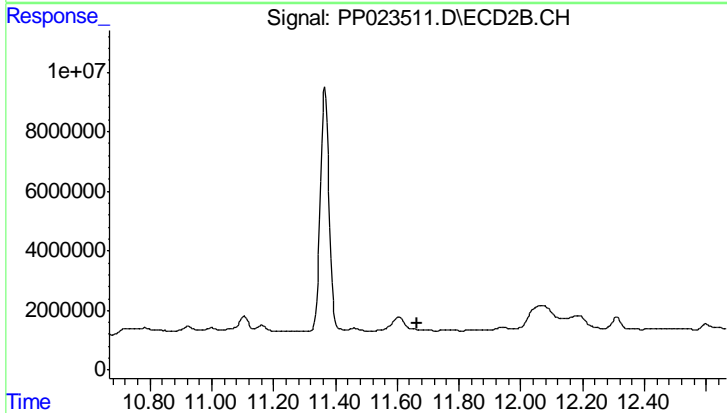
#5 DICAMBA

R.T.: 11.933 min

Delta R.T.: 0.025 min

Response: 6242163

Conc: 2.90 ng/ml



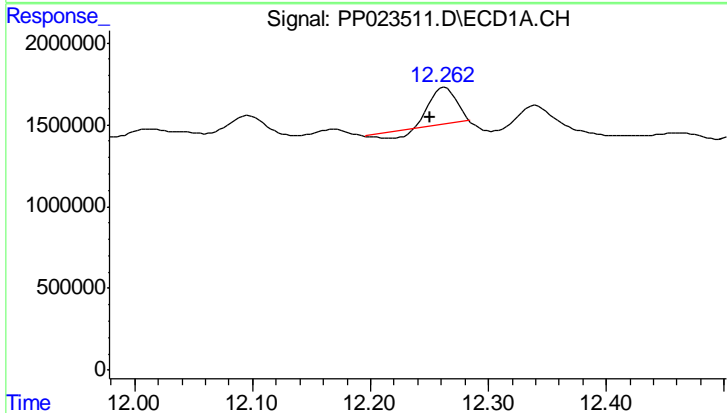
#5 DICAMBA

R.T.: 0.000 min

Exp R.T.: 11.666 min

Response: 0

Conc: N.D.



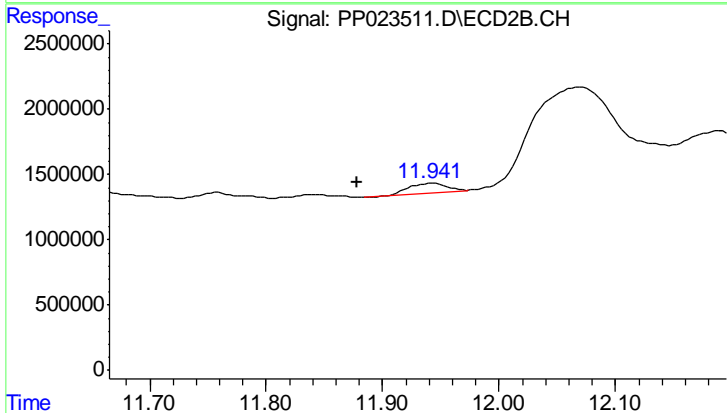
#6 MCP

R.T.: 12.263 min

Delta R.T.: 0.013 min

Response: 3123914

Conc: 2.13 ug/ml



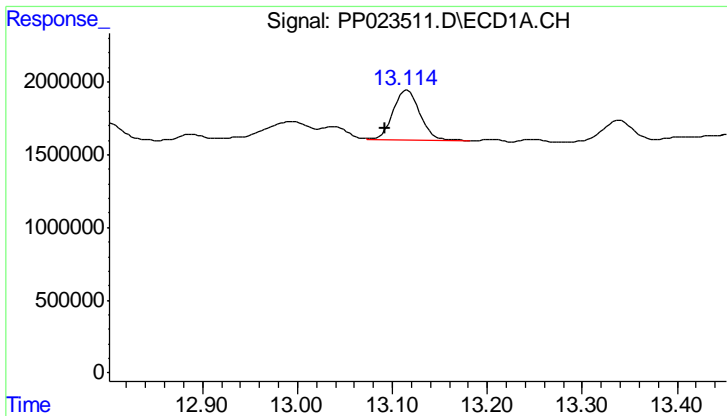
#6 MCP

R.T.: 11.942 min

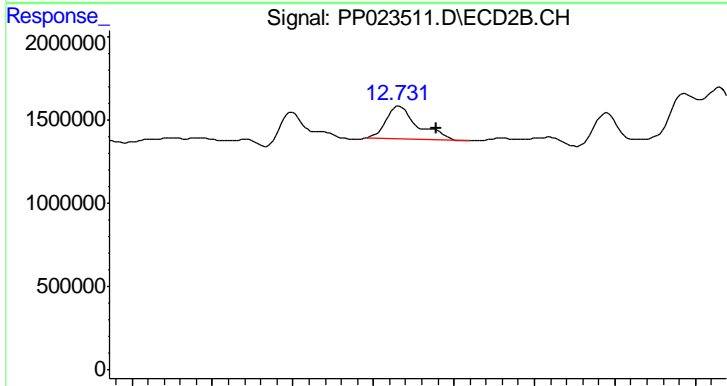
Delta R.T.: 0.064 min

Response: 1553960

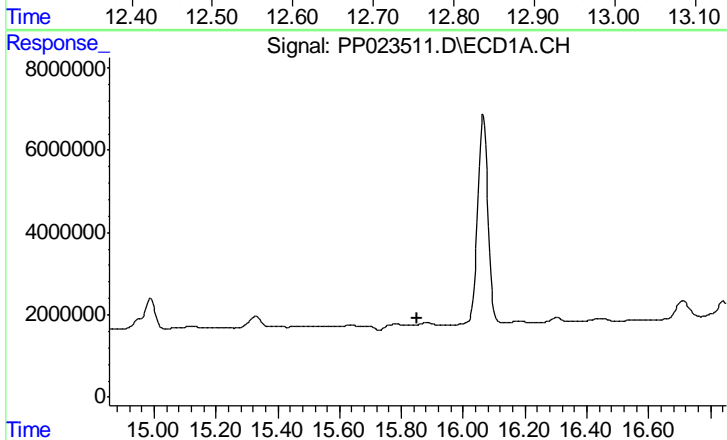
Conc: 0.97 ug/ml



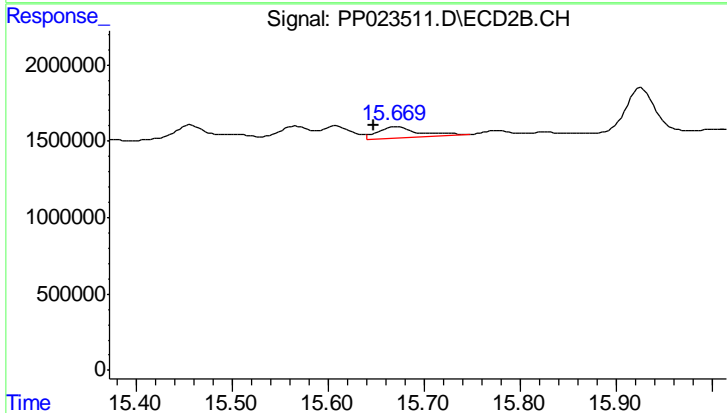
#8 DICHLORPROP  
R.T.: 13.116 min  
Delta R.T.: 0.023 min  
Response: 6914279  
Conc: 13.02 ng/ml



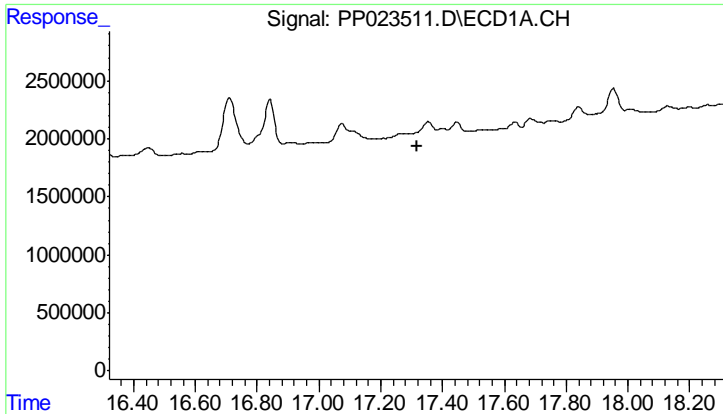
#8 DICHLORPROP  
R.T.: 12.732 min  
Delta R.T.: -0.045 min  
Response: 5374471  
Conc: 9.15 ng/ml



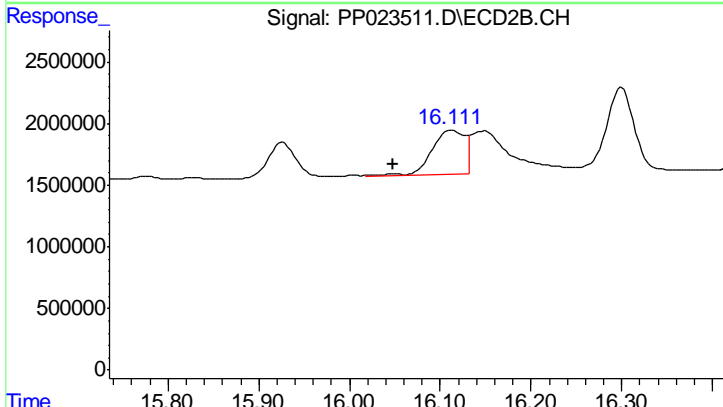
#13 2,4-DB  
R.T.: 0.000 min  
Exp R.T.: 15.853 min  
Response: 0  
Conc: N.D.



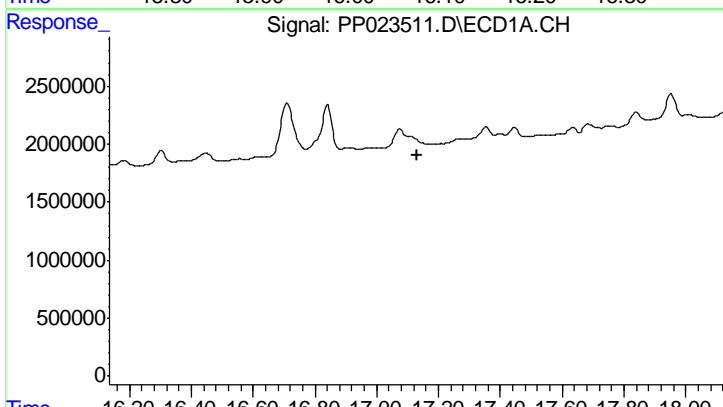
#13 2,4-DB  
R.T.: 15.671 min  
Delta R.T.: 0.023 min  
Response: 2107454  
Conc: 4.87 ng/ml



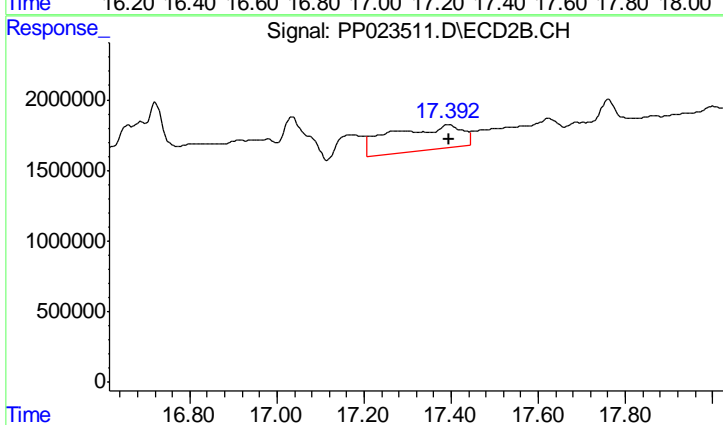
#14 DINOSEB  
 R.T.: 0.000 min  
 Exp R.T.: 17.319 min  
 Response: 0  
 Conc: N.D.



#14 DINOSEB  
 R.T.: 16.113 min  
 Delta R.T.: 0.065 min  
 Response: 9048830  
 Conc: 3.68 ng/ml



#15 Picloram  
 R.T.: 0.000 min  
 Exp R.T.: 17.132 min  
 Response: 0  
 Conc: N.D.



#15 Picloram  
 R.T.: 17.394 min  
 Delta R.T.: 0.000 min  
 Response: 19345937  
 Conc: 3.88 ng/ml