

Data Path : Z:\pestpcbsrv\HPCHEM1\ECD\_P\Data\PP020623\  
 Data File : PP055382.D  
 Signal(s) : Signal #1: ECD1A.ch Signal #2: ECD2B.ch  
 Acq On : 06 Feb 2023 21:39  
 Operator : YP\AJ  
 Sample : 01420-01 5X  
 Misc :  
 ALS Vial : 29 Sample Multiplier: 1

**Instrument :**  
 ECD\_P  
**ClientSampleId :**  
 01A-01B-01C

**Manual Integrations**  
**APPROVED**

Reviewed By :Ankita Jodhani 02/07/2023  
 Supervised By :mohammad ahmed 02/07/2023

Integration File signal 1: autoint1.e  
 Integration File signal 2: autoint2.e  
 Quant Time: Feb 07 01:33:44 2023  
 Quant Method : Z:\pestpcbsrv\HPCHEM1\ECD\_P\methods\PP012423.M  
 Quant Title : GC EXTRACTABLES  
 QLast Update : Tue Jan 24 03:37:45 2023  
 Response via : Initial Calibration  
 Integrator: ChemStation

Volume Inj. : 2 µl  
 Signal #1 Phase : ZB-MR1 Signal #2 Phase: ZB-MR2  
 Signal #1 Info : 30Mx0.32mmx 0.50µ Signal #2 Info : 30M x 0.32mm x 0.25µm

Compound	RT#1	RT#2	Resp#1	Resp#2	ng/ml	ng/ml
-----						
System Monitoring Compounds						
1) SA Tetrachlo...	4.327	3.572	3424089	3105539	1.969m	2.069
2) SA Decachlor...	10.081	8.584	5197421	3914151	3.001	2.898

Target Compounds

(f)=RT Delta > 1/2 Window (#)=Amounts differ by > 25% (m)=manual int.

Data Path : Z:\pestpcbsrv\HPCHEM1\ECD\_P\Data\PP020623\  
 Data File : PP055382.D  
 Signal(s) : Signal #1: ECD1A.ch Signal #2: ECD2B.ch  
 Acq On : 06 Feb 2023 21:39  
 Operator : YP\AJ  
 Sample : 01420-01 5X  
 Misc :  
 ALS Vial : 29 Sample Multiplier: 1

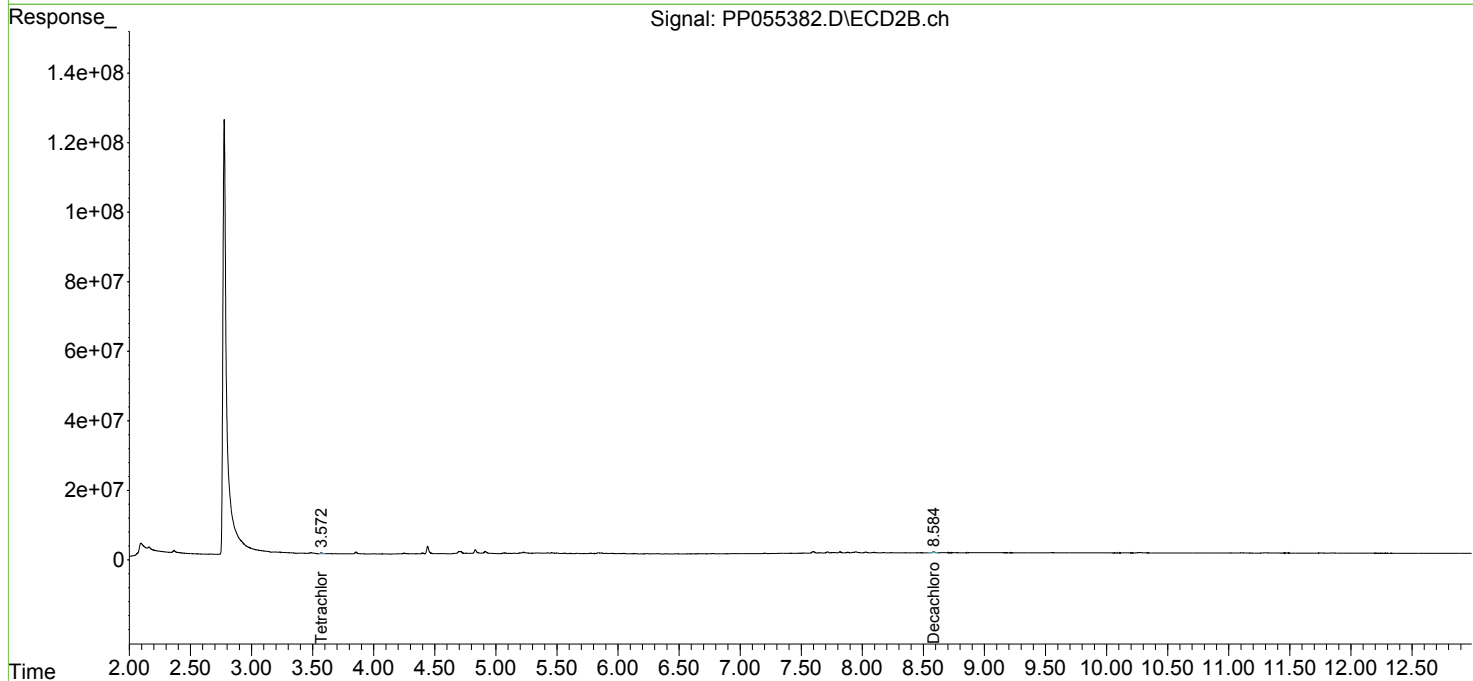
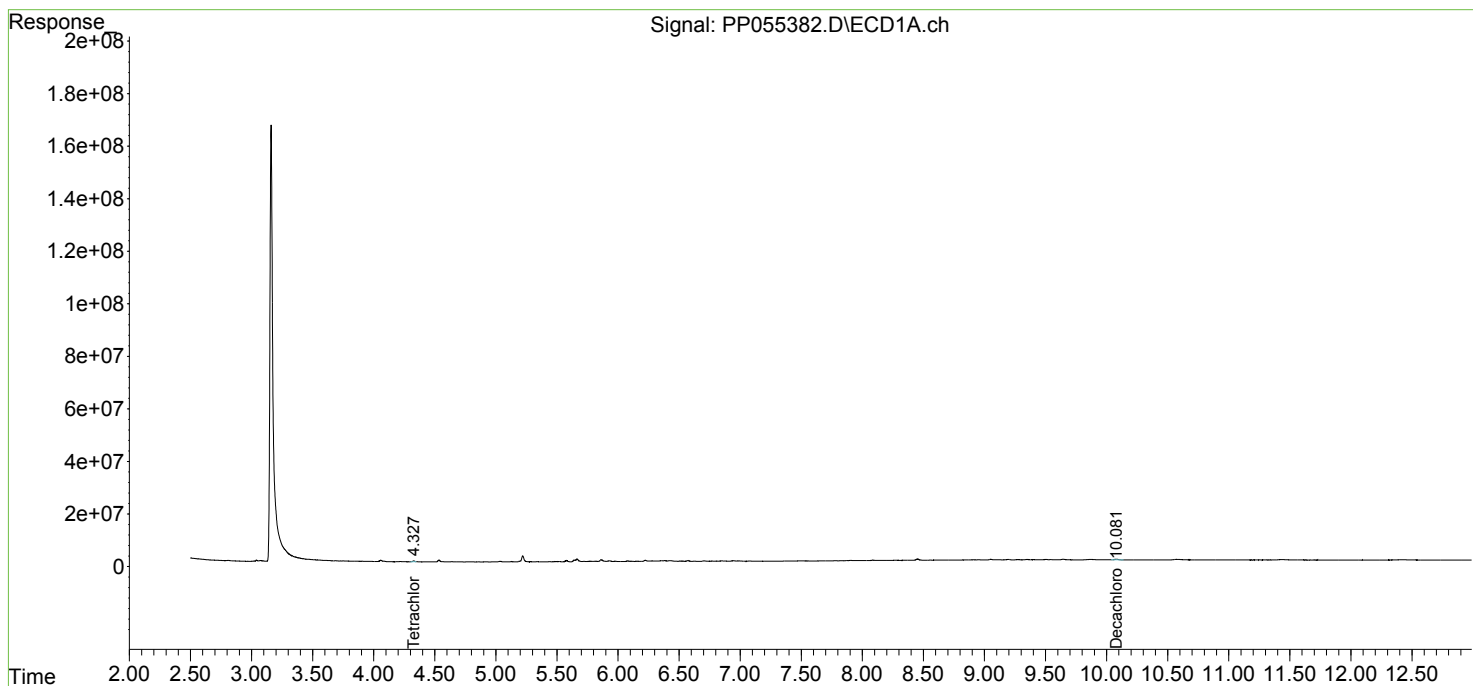
**Instrument :**  
 ECD\_P  
**ClientSampleId :**  
 01A-01B-01C

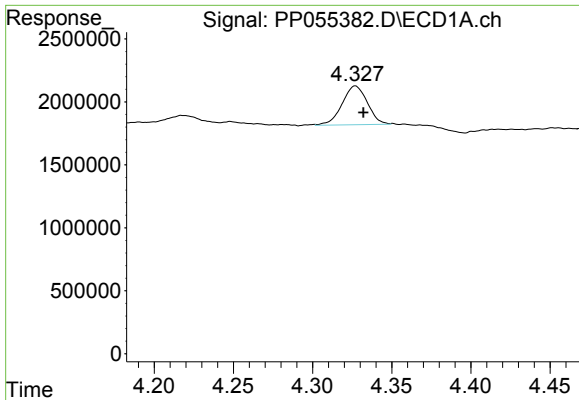
**Manual Integrations**  
**APPROVED**

Reviewed By :Ankita Jodhani 02/07/2023  
 Supervised By :mohammad ahmed 02/07/2023

Integration File signal 1: autoint1.e  
 Integration File signal 2: autoint2.e  
 Quant Time: Feb 07 01:33:44 2023  
 Quant Method : Z:\pestpcbsrv\HPCHEM1\ECD\_P\methods\PP012423.M  
 Quant Title : GC EXTRACTABLES  
 QLast Update : Tue Jan 24 03:37:45 2023  
 Response via : Initial Calibration  
 Integrator: ChemStation

Volume Inj. : 2 µl  
 Signal #1 Phase : ZB-MR1 Signal #2 Phase: ZB-MR2  
 Signal #1 Info : 30Mx0.32mmx 0.50µ Signal #2 Info : 30M x 0.32mm x 0.25µm

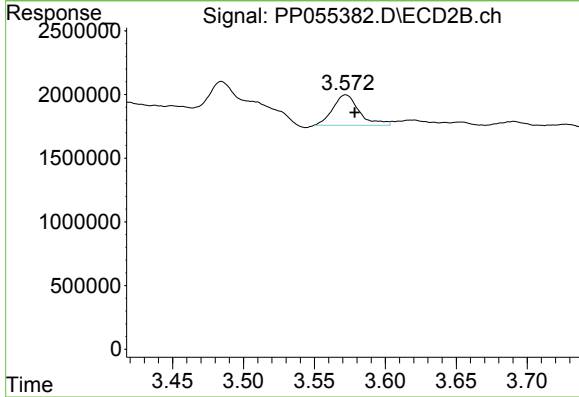




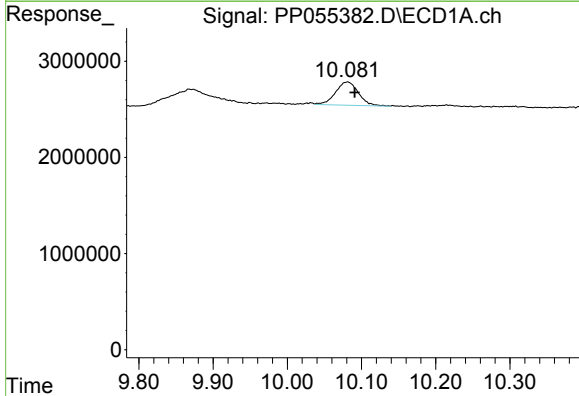
#1 Tetrachloro-m-xylene  
 R.T.: 4.327 min  
 Delta R.T.: -0.005 min  
 Response: 3424089  
 Conc: 1.97 ng/ml

Instrument : ECD\_P  
 Client Sample Id : 01A-01B-01C

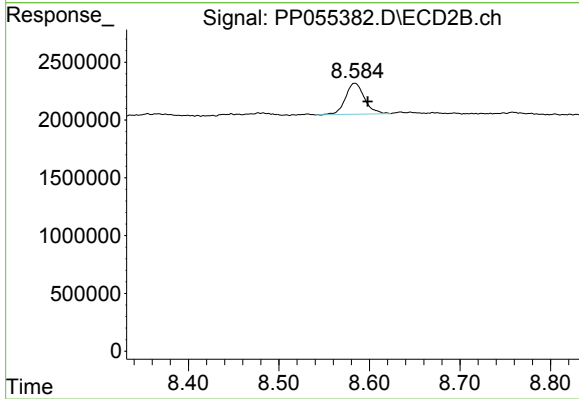
**Manual Integrations**  
**APPROVED**  
 Reviewed By :Ankita Jodhani 02/07/2023  
 Supervised By :mohammad ahmed 02/07/2023



#1 Tetrachloro-m-xylene  
 R.T.: 3.572 min  
 Delta R.T.: -0.006 min  
 Response: 3105539  
 Conc: 2.07 ng/ml



#2 Decachlorobiphenyl  
 R.T.: 10.081 min  
 Delta R.T.: -0.010 min  
 Response: 5197421  
 Conc: 3.00 ng/ml



#2 Decachlorobiphenyl  
 R.T.: 8.584 min  
 Delta R.T.: -0.014 min  
 Response: 3914151  
 Conc: 2.90 ng/ml