

Data Path : Z:\pestpcbsrv\HPCHEM1\ECD\_P\Data\PP020625\  
 Data File : PP069576.D  
 Signal(s) : Signal #1: ECD1A.ch Signal #2: ECD2B.ch  
 Acq On : 06 Feb 2025 19:36  
 Operator : YP\AJ  
 Sample : Q1304-01  
 Misc :  
 ALS Vial : 24 Sample Multiplier: 1

Instrument :  
 ECD\_P  
 ClientSampleId :  
 RB21140

Integration File signal 1: autoint1.e  
 Integration File signal 2: autoint2.e  
 Quant Time: Feb 07 02:05:51 2025  
 Quant Method : Z:\pestpcbsrv\HPCHEM1\ECD\_P\methods\PP012825.M  
 Quant Title : GC EXTRACTABLES  
 QLast Update : Wed Jan 29 00:13:21 2025  
 Response via : Initial Calibration  
 Integrator: ChemStation

Volume Inj. : 2 µl  
 Signal #1 Phase : ZB-MR1 Signal #2 Phase: ZB-MR2  
 Signal #1 Info : 30Mx0.32mmx 0.50µ Signal #2 Info : 30M x 0.32mm x 0.25µm

Compound	RT#1	RT#2	Resp#1	Resp#2	ng/ml	ng/ml
System Monitoring Compounds						
1) SA Tetrachlo...	4.535	3.840	17424750	12597512	12.173	14.114
2) SA Decachlor...	10.270	8.905	18232184	17825388	16.682	15.937
Target Compounds						
3) L1 AR-1016-1	5.683	4.942	1278041	-21215	27.584	N.D. #
4) L1 AR-1016-2	5.683	4.942	1278041	-21215	18.829	N.D. #
5) L1 AR-1016-3	0.000	5.142	0	46686	N.D.	1.876 #
6) L1 AR-1016-4	5.857	5.190	3596112	563143	102.745	27.883 #
7) L1 AR-1016-5	6.152	5.402	661328	2543453	20.005	94.820 #
8) L2 AR-1221-1	0.000	4.095f	0	108451	N.D.	8.804 #
9) L2 AR-1221-2	4.836	4.145	699962	403330	51.120	41.652
10) L2 AR-1221-3	4.916	4.214	699195	461385	16.670	15.815
11) L3 AR-1232-1	4.916	4.214	699195	461385	21.001	19.651
12) L3 AR-1232-2	5.393	4.942	1121636	-21215	68.635	N.D. #
13) L3 AR-1232-3	5.683	5.142	1278041	46686	37.197	3.606 #
14) L3 AR-1232-4	5.857	5.232	3596112	229098	201.845	20.665 #
15) L3 AR-1232-5	5.964	5.402	1110334	2543453	96.867	208.304 #
16) L4 AR-1242-1	5.683	4.942	1278041	-21215	30.645	N.D. #
17) L4 AR-1242-2	5.683	4.942	1278041	-21215	21.665	N.D. #
18) L4 AR-1242-3	0.000	5.142	0	46686	N.D.	2.075 #
19) L4 AR-1242-4	5.857	5.232	3596112	229098	109.655	10.615 #
20) L4 AR-1242-5	6.580	5.742	13630583	3945817	418.317	137.158 #
21) L5 AR-1248-1	5.683	4.942	1278041	-21215	39.398	N.D. #
22) L5 AR-1248-2	5.964	5.190	1110334	563143	26.159	18.731 #
23) L5 AR-1248-3	6.152	5.232	661328	229098	14.075	7.394 #
24) L5 AR-1248-4	6.580	5.402	13630583	2543453	247.283	68.847 #
25) L5 AR-1248-5	6.580	5.789	13630583	1068777	255.332	28.585 #
26) L6 AR-1254-1	6.534	5.742	4862602	3945817	84.035	71.669
27) L6 AR-1254-2	6.821f	5.890	9538154	791878	118.868	16.372 #
28) L6 AR-1254-3	7.124	6.320	3202765	1380045	37.998	18.183 #
29) L6 AR-1254-4	7.412	6.550	401477	405322	5.888	7.909 #
30) L6 AR-1254-5	7.834	6.937	5168868	3008126	75.961	45.194 #
31) L7 AR-1260-1	7.350f	6.447	2216759	1574389	37.935	32.644
32) L7 AR-1260-2	7.535	6.612	3020243	461452	38.814	7.527 #
33) L7 AR-1260-3	7.869	6.763	1063460	940349	17.010	15.632
34) L7 AR-1260-4	8.100	7.240	1013190	93674	15.357	2.016 #
35) L7 AR-1260-5	8.443	7.479	352845	177634	2.695	1.598 #
36) L8 AR-1262-1	8.100	7.007	1013190	71344	12.822	1.005 #
37) L8 AR-1262-2	8.443	7.240	352845	93674	2.307	1.536 #
38) L8 AR-1262-3	8.782	7.774	14276836	1371350	134.333	26.221 #
39) L8 AR-1262-4	8.852	7.853	296927	2551161	3.630	27.599 #
40) L8 AR-1262-5	0.000	8.331	0	188316	N.D.	3.940 #
41) L9 AR-1268-1	8.782	7.774	14276836	1371350	80.853	9.450 #

Data Path : Z:\pestpcbsrv\HPCHEM1\ECD\_P\Data\PP020625\  
 Data File : PP069576.D  
 Signal(s) : Signal #1: ECD1A.ch Signal #2: ECD2B.ch  
 Acq On : 06 Feb 2025 19:36  
 Operator : YP\AJ  
 Sample : Q1304-01  
 Misc :  
 ALS Vial : 24 Sample Multiplier: 1

Instrument :  
 ECD\_P  
 ClientSampleId :  
 RB21140

Integration File signal 1: autoint1.e  
 Integration File signal 2: autoint2.e  
 Quant Time: Feb 07 02:05:51 2025  
 Quant Method : Z:\pestpcbsrv\HPCHEM1\ECD\_P\methods\PP012825.M  
 Quant Title : GC EXTRACTABLES  
 QLast Update : Wed Jan 29 00:13:21 2025  
 Response via : Initial Calibration  
 Integrator: ChemStation

Volume Inj. : 2 µl  
 Signal #1 Phase : ZB-MR1 Signal #2 Phase: ZB-MR2  
 Signal #1 Info : 30Mx0.32mmx 0.50µ Signal #2 Info : 30M x 0.32mm x 0.25µm

	Compound	RT#1	RT#2	Resp#1	Resp#2	ng/ml	ng/ml
42)	L9 AR-1268-2	8.852	7.853	296927	2551161	1.887	19.208 #
43)	L9 AR-1268-3	9.083	8.026	3066652	599895	22.932	5.274 #
44)	L9 AR-1268-4	0.000	8.331	0	188316	N.D.	3.616 #
45)	L9 AR-1268-5	0.000	8.637	0	169199	N.D.	0.475 #

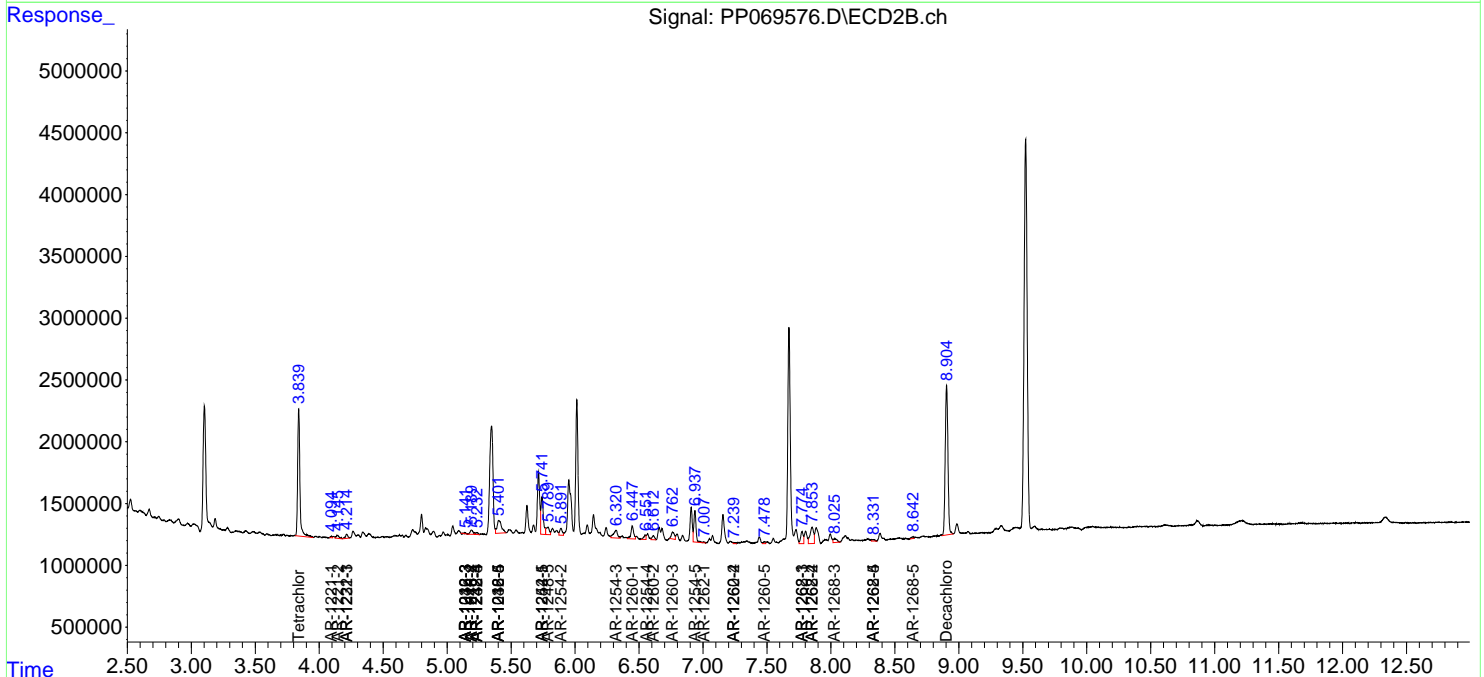
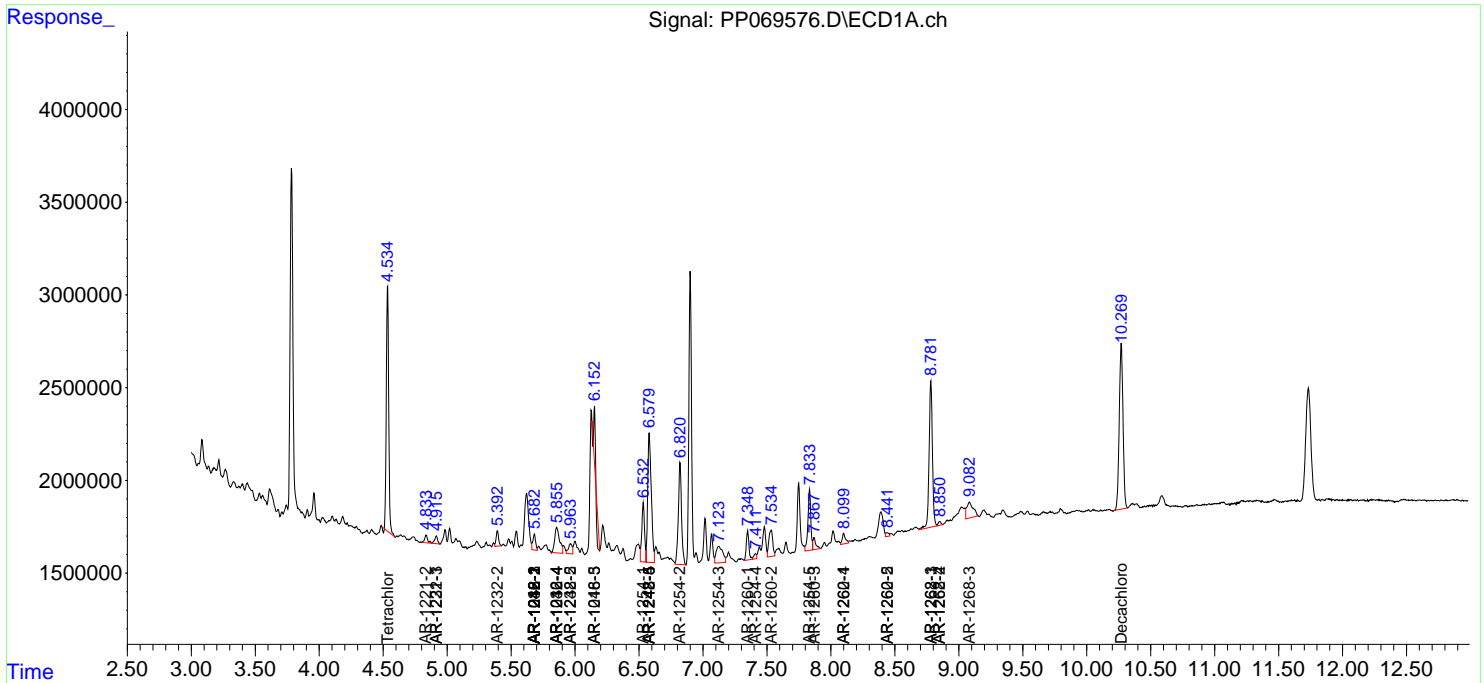
(f)=RT Delta > 1/2 Window (#)=Amounts differ by > 25% (m)=manual int.

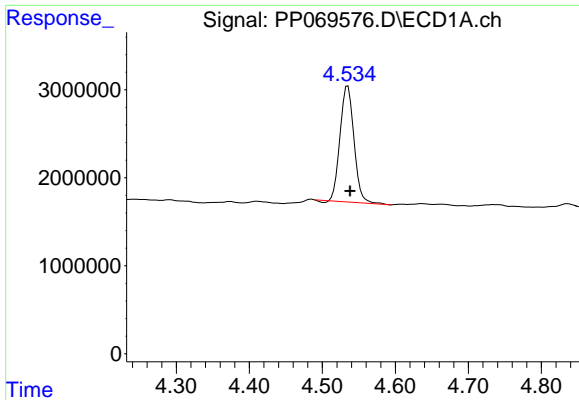
Data Path : Z:\pestpcbsrv\HPCHEM1\ECD\_P\Data\PP020625\  
 Data File : PP069576.D  
 Signal(s) : Signal #1: ECD1A.ch Signal #2: ECD2B.ch  
 Acq On : 06 Feb 2025 19:36  
 Operator : YP\AJ  
 Sample : Q1304-01  
 Misc :  
 ALS Vial : 24 Sample Multiplier: 1

Instrument :  
 ECD\_P  
 ClientSampleId :  
 RB21140

Integration File signal 1: autoint1.e  
 Integration File signal 2: autoint2.e  
 Quant Time: Feb 07 02:05:51 2025  
 Quant Method : Z:\pestpcbsrv\HPCHEM1\ECD\_P\methods\PP012825.M  
 Quant Title : GC EXTRACTABLES  
 QLast Update : Wed Jan 29 00:13:21 2025  
 Response via : Initial Calibration  
 Integrator: ChemStation

Volume Inj. : 2 µl  
 Signal #1 Phase : ZB-MR1 Signal #2 Phase: ZB-MR2  
 Signal #1 Info : 30Mx0.32mmx 0.50µ Signal #2 Info : 30M x 0.32mm x 0.25µm

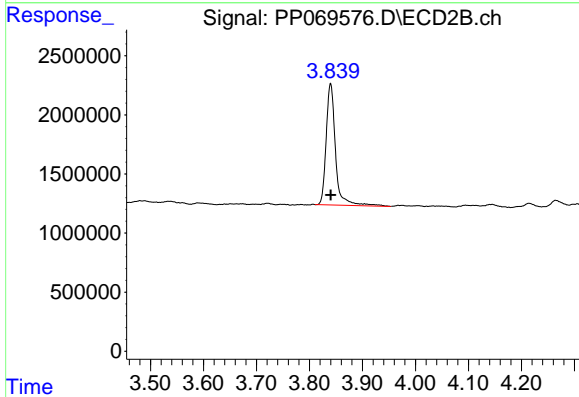




#1 Tetrachloro-m-xylene

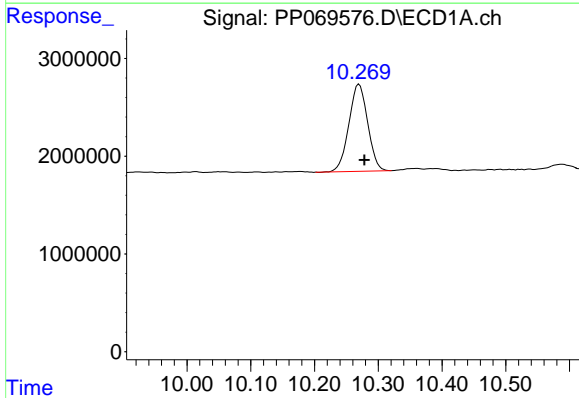
R.T.: 4.535 min  
 Delta R.T.: -0.003 min  
 Response: 17424750  
 Conc: 12.17 ng/ml

Instrument :  
 ECD\_P  
 ClientSampleId :  
 RB21140



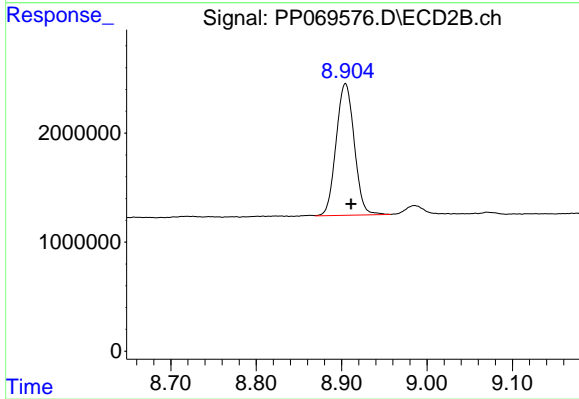
#1 Tetrachloro-m-xylene

R.T.: 3.840 min  
 Delta R.T.: 0.000 min  
 Response: 12597512  
 Conc: 14.11 ng/ml



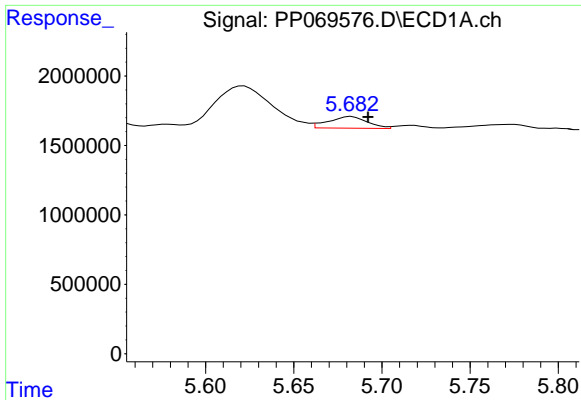
#2 Decachlorobiphenyl

R.T.: 10.270 min  
 Delta R.T.: -0.009 min  
 Response: 18232184  
 Conc: 16.68 ng/ml



#2 Decachlorobiphenyl

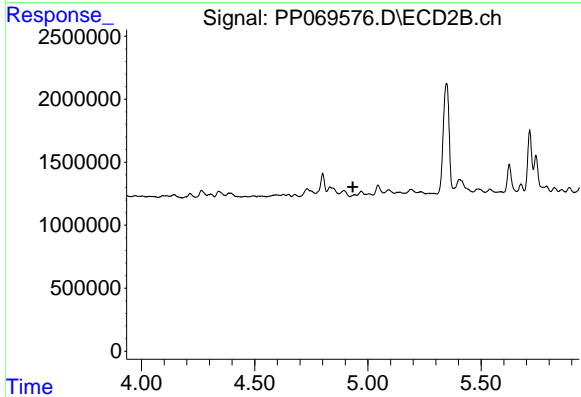
R.T.: 8.905 min  
 Delta R.T.: -0.007 min  
 Response: 17825388  
 Conc: 15.94 ng/ml



#3 AR-1016-1

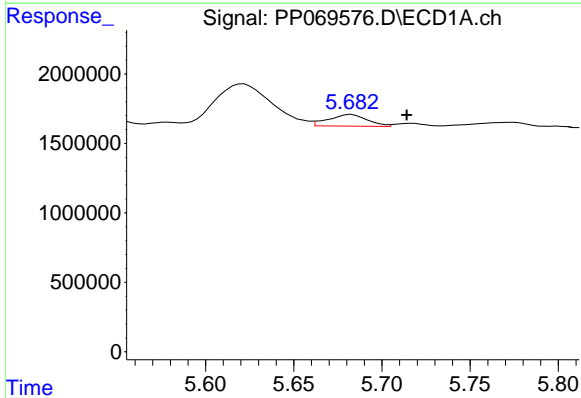
R.T.: 5.683 min  
 Delta R.T.: -0.009 min  
 Response: 1278041  
 Conc: 27.58 ng/ml

Instrument :  
 ECD\_P  
 ClientSampleId :  
 RB21140



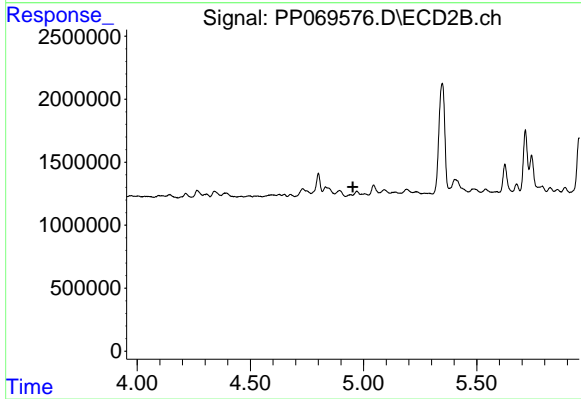
#3 AR-1016-1

R.T.: 4.942 min  
 Delta R.T.: 0.008 min  
 Response: -21215  
 Conc: N.D.



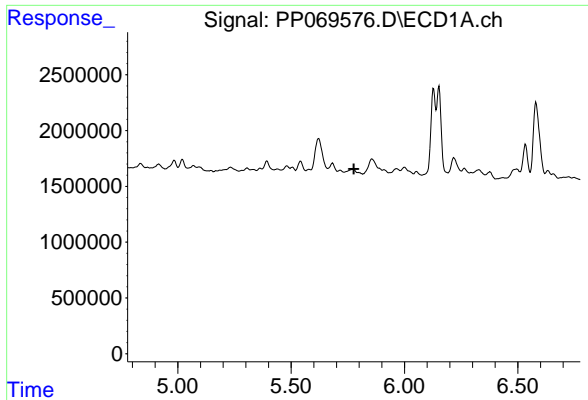
#4 AR-1016-2

R.T.: 5.683 min  
 Delta R.T.: -0.031 min  
 Response: 1278041  
 Conc: 18.83 ng/ml



#4 AR-1016-2

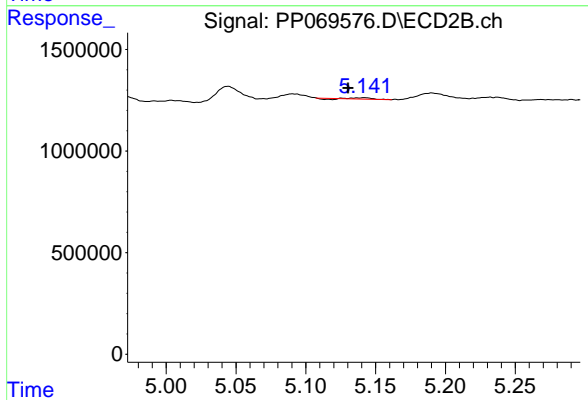
R.T.: 4.942 min  
 Delta R.T.: -0.011 min  
 Response: -21215  
 Conc: N.D.



#5 AR-1016-3

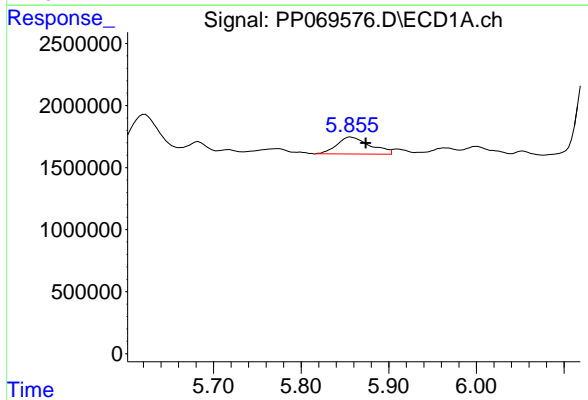
R.T.: 0.000 min  
 Exp R.T.: 5.776 min  
 Response: 0  
 Conc: N.D.

Instrument :  
 ECD\_P  
 ClientSampleId :  
 RB21140



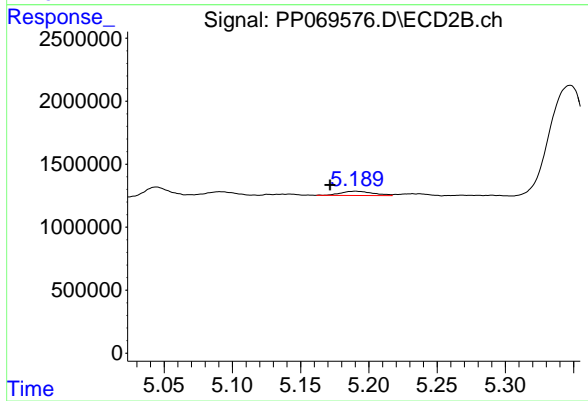
#5 AR-1016-3

R.T.: 5.142 min  
 Delta R.T.: 0.012 min  
 Response: 46686  
 Conc: 1.88 ng/ml



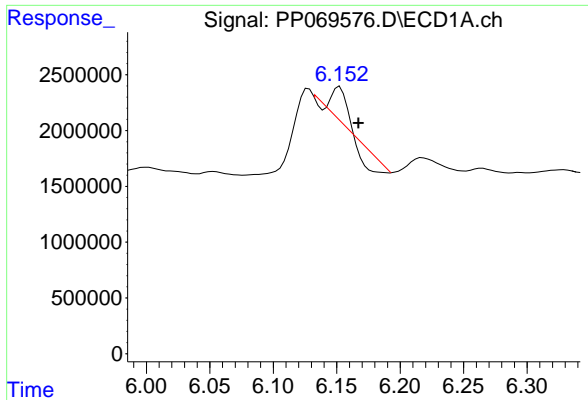
#6 AR-1016-4

R.T.: 5.857 min  
 Delta R.T.: -0.017 min  
 Response: 3596112  
 Conc: 102.74 ng/ml



#6 AR-1016-4

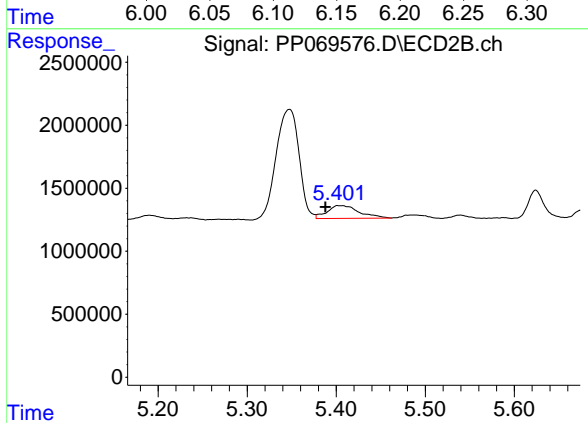
R.T.: 5.190 min  
 Delta R.T.: 0.019 min  
 Response: 563143  
 Conc: 27.88 ng/ml



#7 AR-1016-5

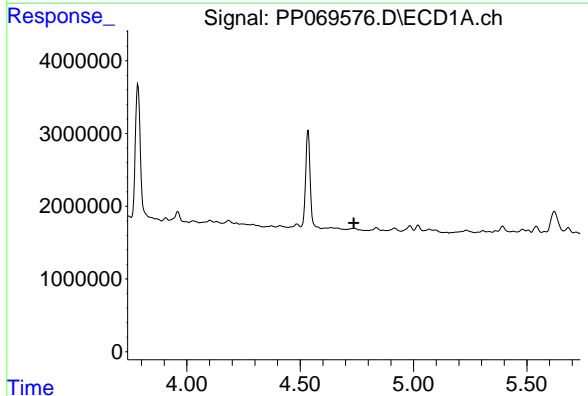
R.T.: 6.152 min  
 Delta R.T.: -0.015 min  
 Response: 661328  
 Conc: 20.00 ng/ml

Instrument :  
 ECD\_P  
 ClientSampleId :  
 RB21140



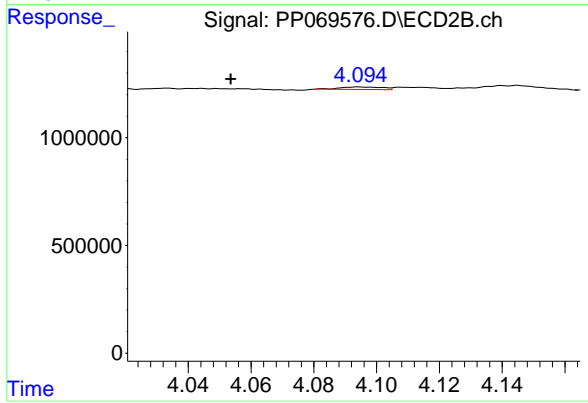
#7 AR-1016-5

R.T.: 5.402 min  
 Delta R.T.: 0.014 min  
 Response: 2543453  
 Conc: 94.82 ng/ml



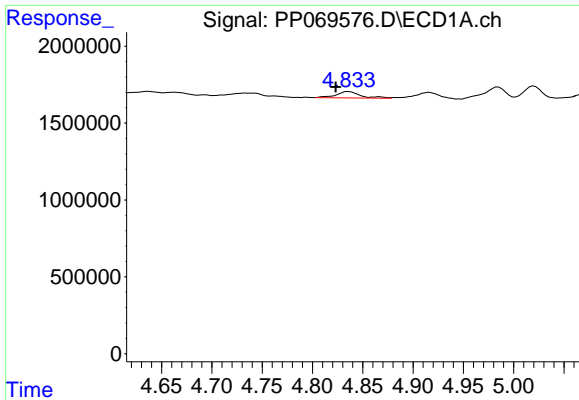
#8 AR-1221-1

R.T.: 0.000 min  
 Exp R.T. : 4.737 min  
 Response: 0  
 Conc: N.D.



#8 AR-1221-1

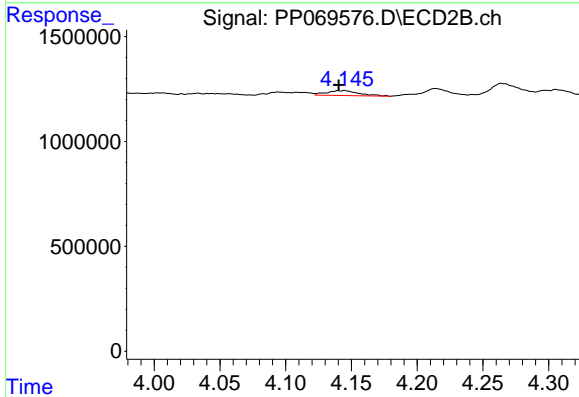
R.T.: 4.095 min  
 Delta R.T.: 0.041 min  
 Response: 108451  
 Conc: 8.80 ng/ml



#9 AR-1221-2

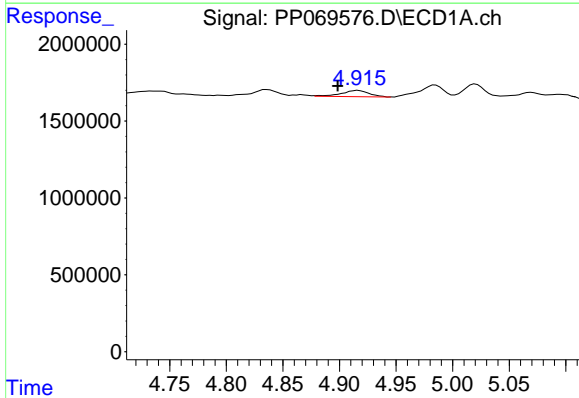
R.T.: 4.836 min  
 Delta R.T.: 0.013 min  
 Response: 699962  
 Conc: 51.12 ng/ml

Instrument :  
 ECD\_P  
 ClientSampleId :  
 RB21140



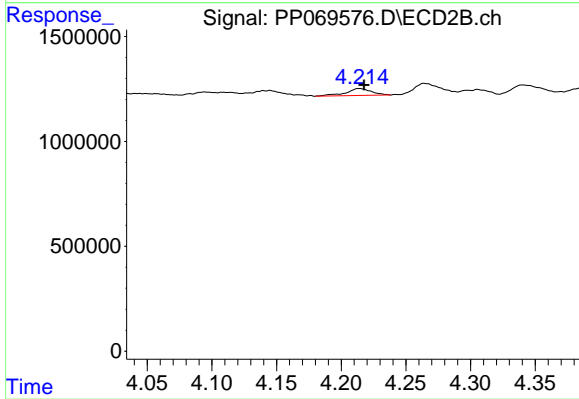
#9 AR-1221-2

R.T.: 4.145 min  
 Delta R.T.: 0.004 min  
 Response: 403330  
 Conc: 41.65 ng/ml



#10 AR-1221-3

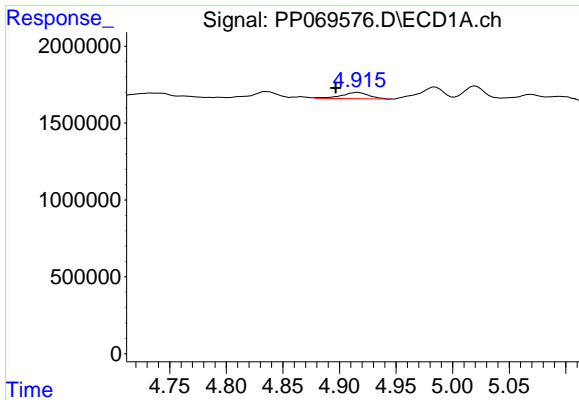
R.T.: 4.916 min  
 Delta R.T.: 0.018 min  
 Response: 699195  
 Conc: 16.67 ng/ml



#10 AR-1221-3

R.T.: 4.214 min  
 Delta R.T.: -0.003 min  
 Response: 461385  
 Conc: 15.81 ng/ml

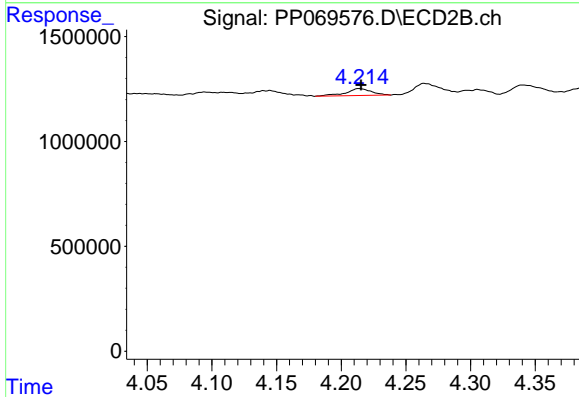




#11 AR-1232-1

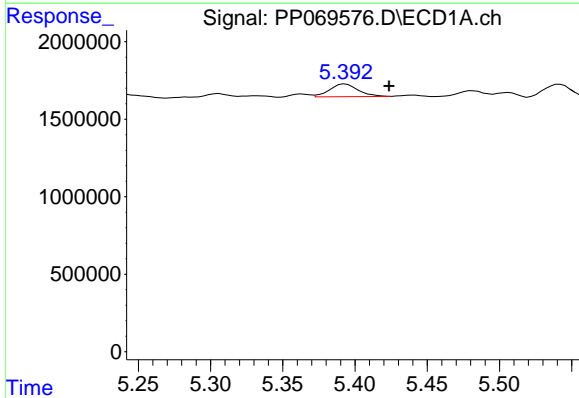
R.T.: 4.916 min  
 Delta R.T.: 0.020 min  
 Response: 699195  
 Conc: 21.00 ng/ml

Instrument :  
 ECD\_P  
 ClientSampleId :  
 RB21140



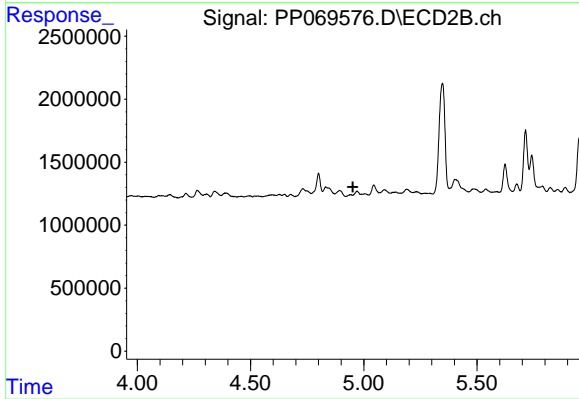
#11 AR-1232-1

R.T.: 4.214 min  
 Delta R.T.: -0.001 min  
 Response: 461385  
 Conc: 19.65 ng/ml



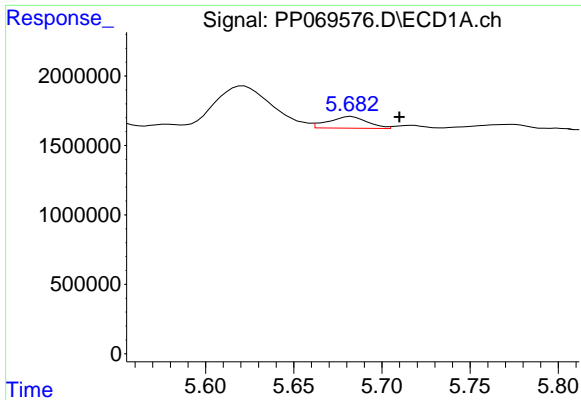
#12 AR-1232-2

R.T.: 5.393 min  
 Delta R.T.: -0.030 min  
 Response: 1121636  
 Conc: 68.64 ng/ml



#12 AR-1232-2

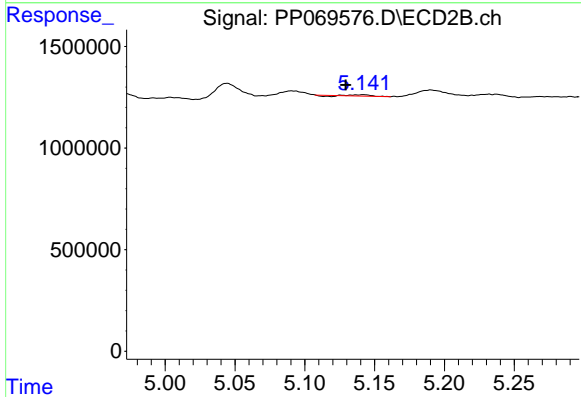
R.T.: 4.942 min  
 Delta R.T.: -0.010 min  
 Response: -21215  
 Conc: N.D.



#13 AR-1232-3

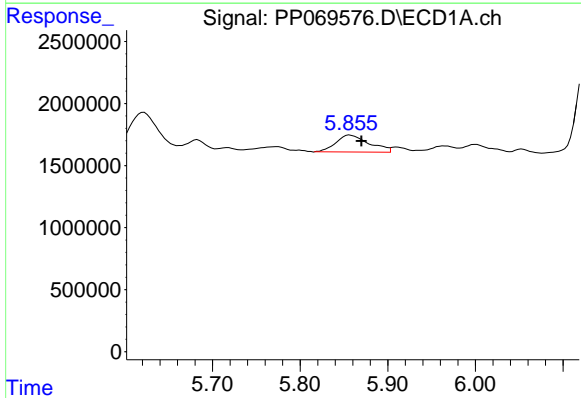
R.T.: 5.683 min  
 Delta R.T.: -0.027 min  
 Response: 1278041  
 Conc: 37.20 ng/ml

Instrument :  
 ECD\_P  
 ClientSampleId :  
 RB21140



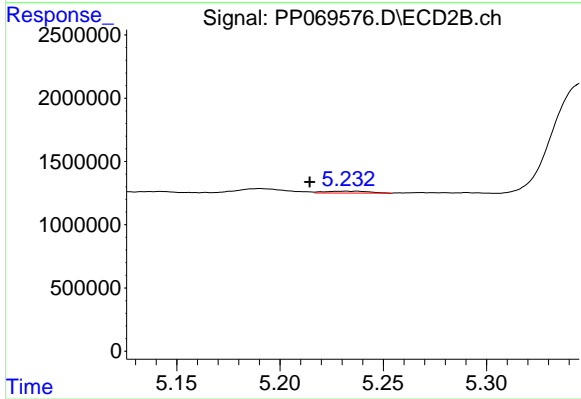
#13 AR-1232-3

R.T.: 5.142 min  
 Delta R.T.: 0.013 min  
 Response: 46686  
 Conc: 3.61 ng/ml



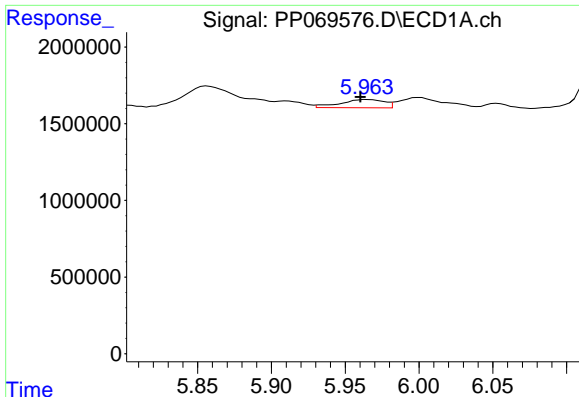
#14 AR-1232-4

R.T.: 5.857 min  
 Delta R.T.: -0.013 min  
 Response: 3596112  
 Conc: 201.85 ng/ml



#14 AR-1232-4

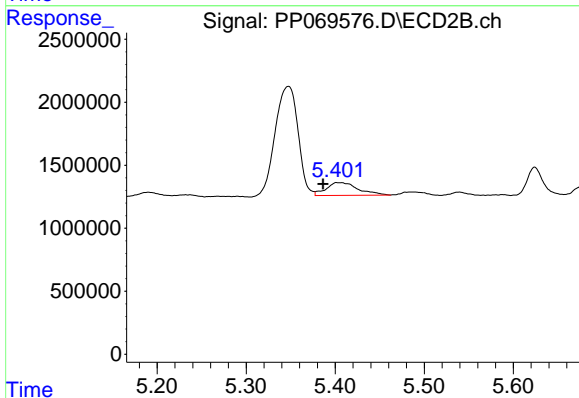
R.T.: 5.232 min  
 Delta R.T.: 0.017 min  
 Response: 229098  
 Conc: 20.66 ng/ml



#15 AR-1232-5

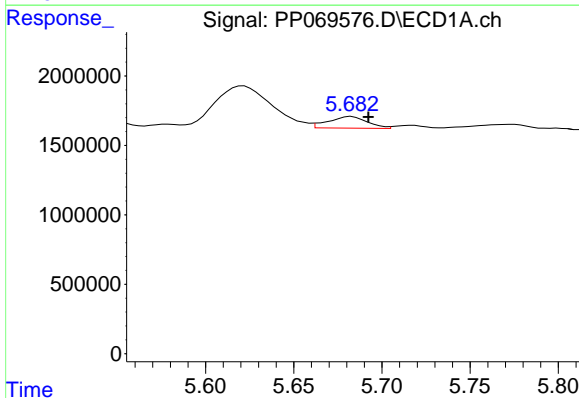
R.T.: 5.964 min  
 Delta R.T.: 0.004 min  
 Response: 1110334  
 Conc: 96.87 ng/ml

Instrument :  
 ECD\_P  
 ClientSampleId :  
 RB21140



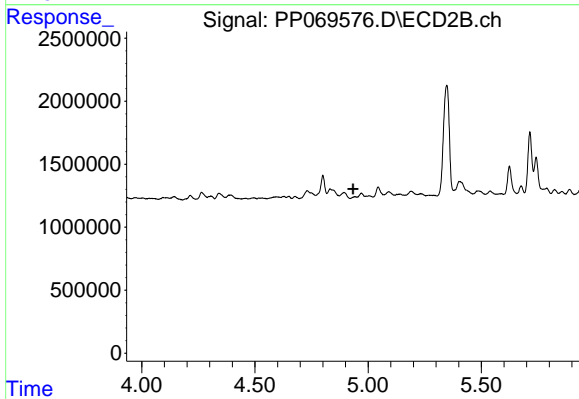
#15 AR-1232-5

R.T.: 5.402 min  
 Delta R.T.: 0.015 min  
 Response: 2543453  
 Conc: 208.30 ng/ml



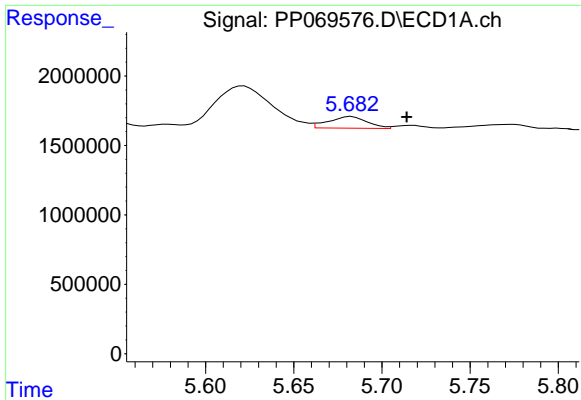
#16 AR-1242-1

R.T.: 5.683 min  
 Delta R.T.: -0.009 min  
 Response: 1278041  
 Conc: 30.64 ng/ml



#16 AR-1242-1

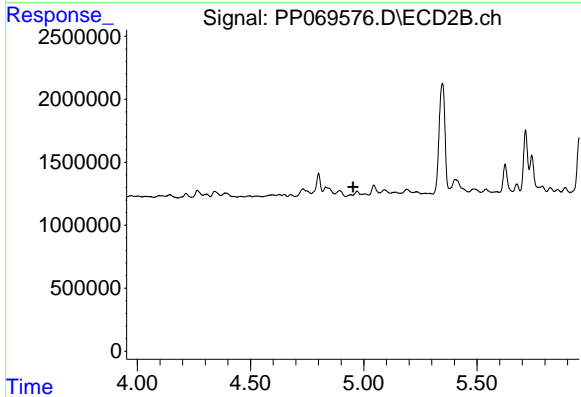
R.T.: 4.942 min  
 Delta R.T.: 0.009 min  
 Response: -21215  
 Conc: N.D.



#17 AR-1242-2

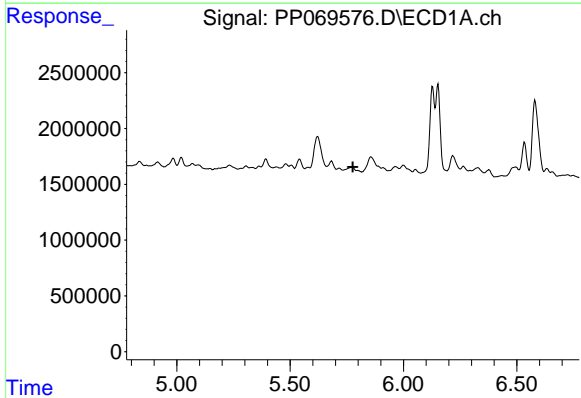
R.T.: 5.683 min  
 Delta R.T.: -0.031 min  
 Response: 1278041  
 Conc: 21.67 ng/ml

Instrument :  
 ECD\_P  
 ClientSampleId :  
 RB21140



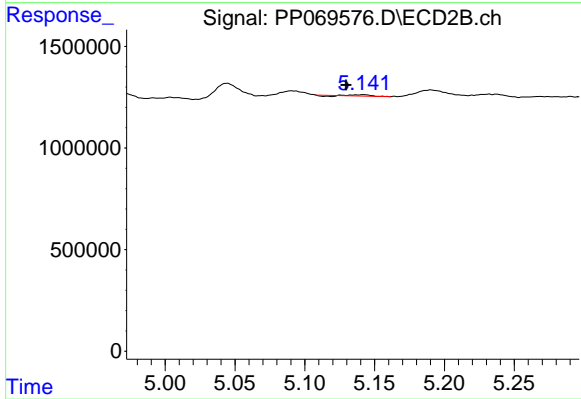
#17 AR-1242-2

R.T.: 4.942 min  
 Delta R.T.: -0.010 min  
 Response: -21215  
 Conc: N.D.



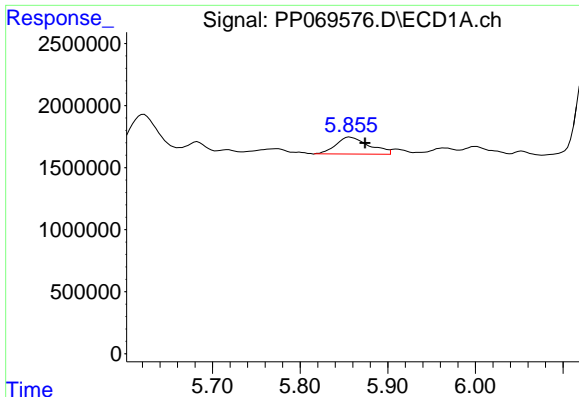
#18 AR-1242-3

R.T.: 0.000 min  
 Exp R.T. : 5.776 min  
 Response: 0  
 Conc: N.D.



#18 AR-1242-3

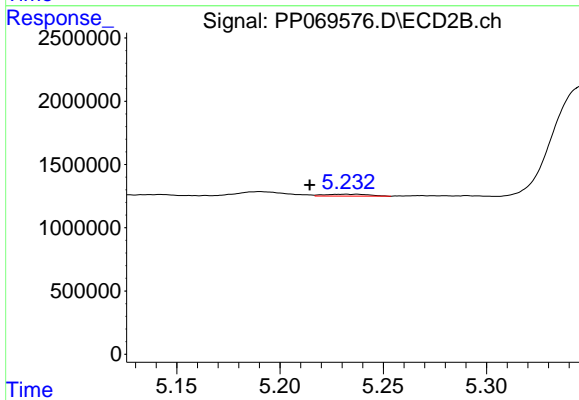
R.T.: 5.142 min  
 Delta R.T.: 0.012 min  
 Response: 46686  
 Conc: 2.07 ng/ml



#19 AR-1242-4

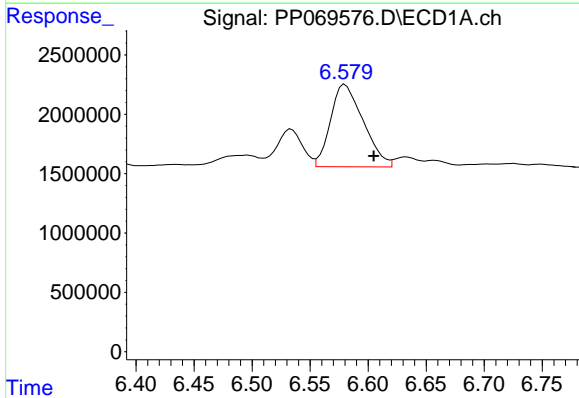
R.T.: 5.857 min  
 Delta R.T.: -0.017 min  
 Response: 3596112  
 Conc: 109.66 ng/ml

Instrument :  
 ECD\_P  
 ClientSampleId :  
 RB21140



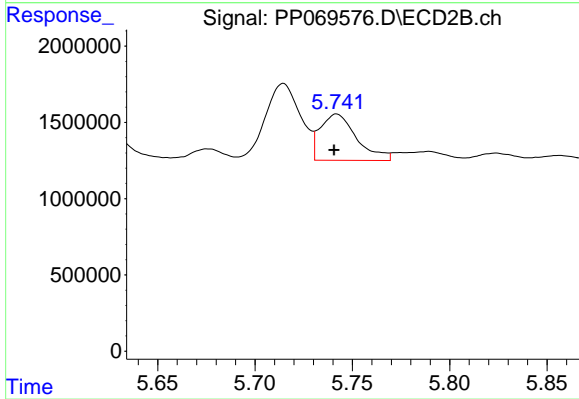
#19 AR-1242-4

R.T.: 5.232 min  
 Delta R.T.: 0.017 min  
 Response: 229098  
 Conc: 10.62 ng/ml



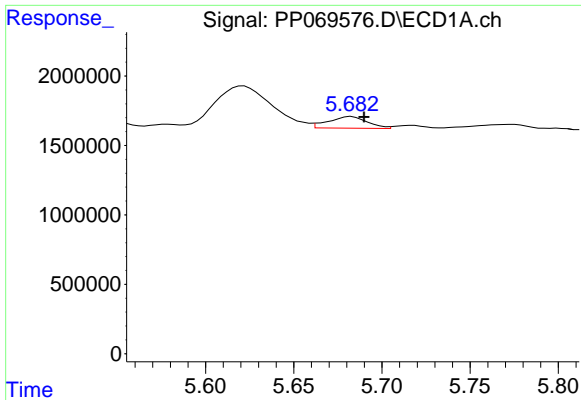
#20 AR-1242-5

R.T.: 6.580 min  
 Delta R.T.: -0.025 min  
 Response: 13630583  
 Conc: 418.32 ng/ml



#20 AR-1242-5

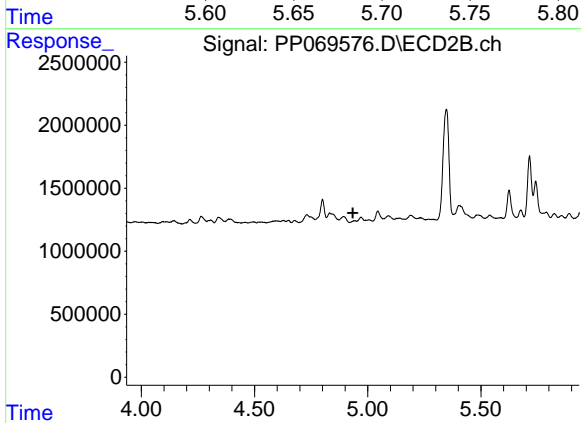
R.T.: 5.742 min  
 Delta R.T.: 0.001 min  
 Response: 3945817  
 Conc: 137.16 ng/ml



#21 AR-1248-1

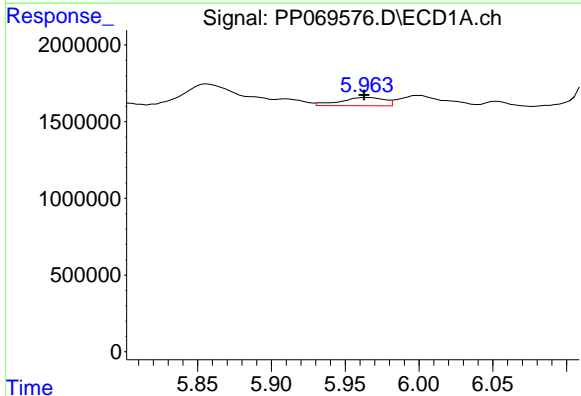
R.T.: 5.683 min  
 Delta R.T.: -0.007 min  
 Response: 1278041  
 Conc: 39.40 ng/ml

Instrument :  
 ECD\_P  
 ClientSampleId :  
 RB21140



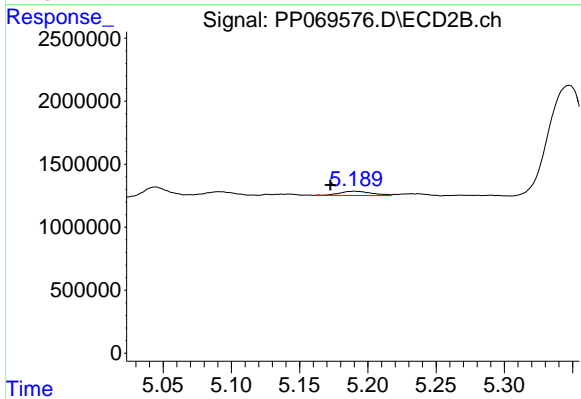
#21 AR-1248-1

R.T.: 4.942 min  
 Delta R.T.: 0.008 min  
 Response: -21215  
 Conc: N.D.



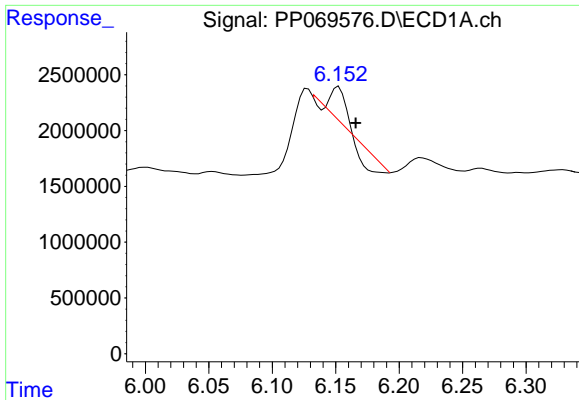
#22 AR-1248-2

R.T.: 5.964 min  
 Delta R.T.: 0.001 min  
 Response: 1110334  
 Conc: 26.16 ng/ml



#22 AR-1248-2

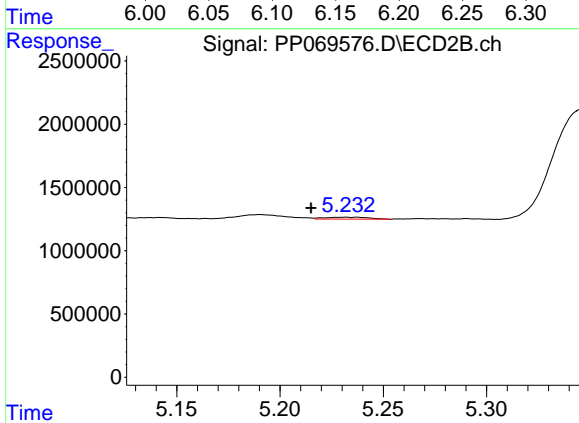
R.T.: 5.190 min  
 Delta R.T.: 0.018 min  
 Response: 563143  
 Conc: 18.73 ng/ml



#23 AR-1248-3

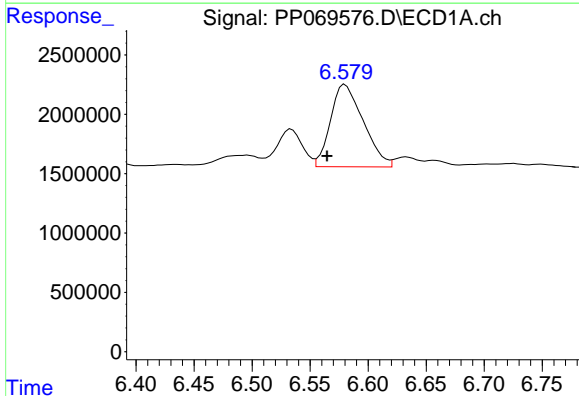
R.T.: 6.152 min  
 Delta R.T.: -0.013 min  
 Response: 661328  
 Conc: 14.07 ng/ml

Instrument :  
 ECD\_P  
 ClientSampleId :  
 RB21140



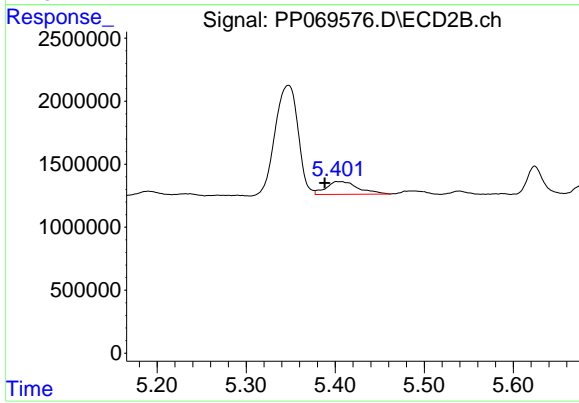
#23 AR-1248-3

R.T.: 5.232 min  
 Delta R.T.: 0.017 min  
 Response: 229098  
 Conc: 7.39 ng/ml



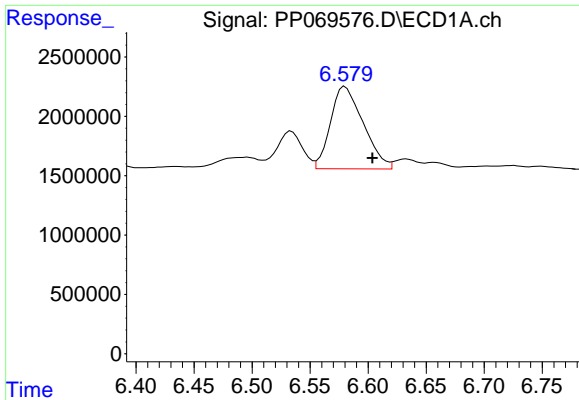
#24 AR-1248-4

R.T.: 6.580 min  
 Delta R.T.: 0.016 min  
 Response: 13630583  
 Conc: 247.28 ng/ml



#24 AR-1248-4

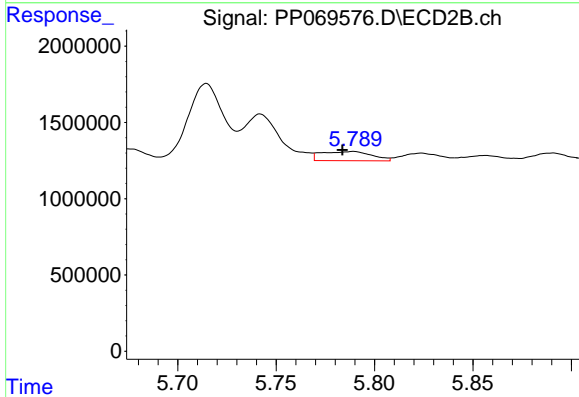
R.T.: 5.402 min  
 Delta R.T.: 0.014 min  
 Response: 2543453  
 Conc: 68.85 ng/ml



#25 AR-1248-5

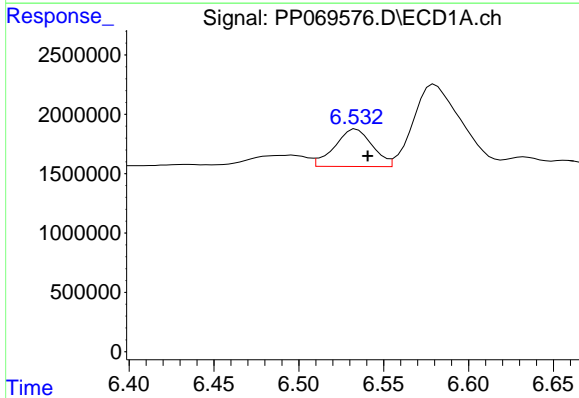
R.T.: 6.580 min  
 Delta R.T.: -0.023 min  
 Response: 13630583  
 Conc: 255.33 ng/ml

Instrument :  
 ECD\_P  
 ClientSampleId :  
 RB21140



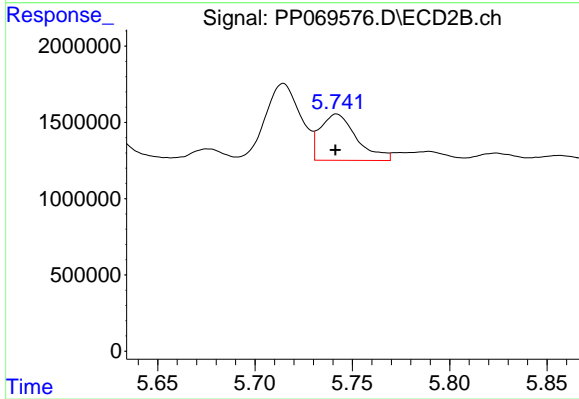
#25 AR-1248-5

R.T.: 5.789 min  
 Delta R.T.: 0.006 min  
 Response: 1068777  
 Conc: 28.59 ng/ml



#26 AR-1254-1

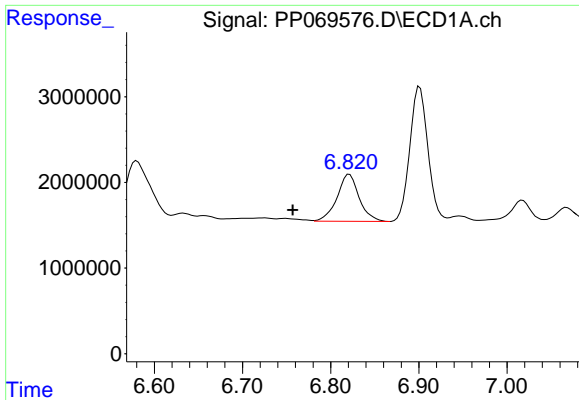
R.T.: 6.534 min  
 Delta R.T.: -0.007 min  
 Response: 4862602  
 Conc: 84.04 ng/ml



#26 AR-1254-1

R.T.: 5.742 min  
 Delta R.T.: 0.000 min  
 Response: 3945817  
 Conc: 71.67 ng/ml

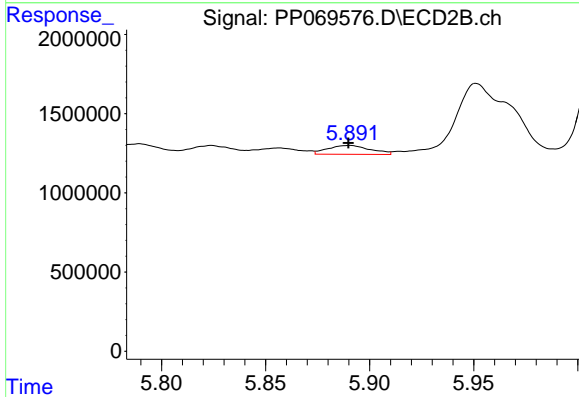




#27 AR-1254-2

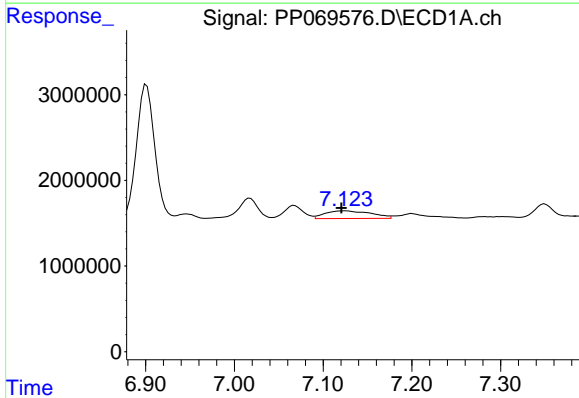
R.T.: 6.821 min  
 Delta R.T.: 0.064 min  
 Response: 9538154  
 Conc: 118.87 ng/ml

Instrument :  
 ECD\_P  
 ClientSampleId :  
 RB21140



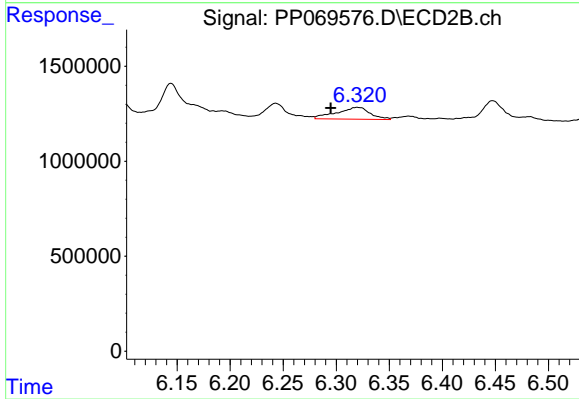
#27 AR-1254-2

R.T.: 5.890 min  
 Delta R.T.: 0.000 min  
 Response: 791878  
 Conc: 16.37 ng/ml



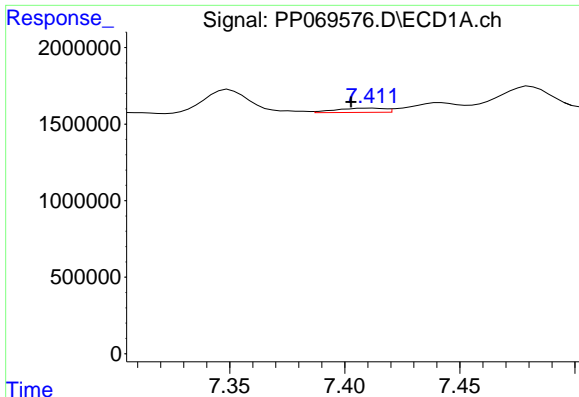
#28 AR-1254-3

R.T.: 7.124 min  
 Delta R.T.: 0.004 min  
 Response: 3202765  
 Conc: 38.00 ng/ml



#28 AR-1254-3

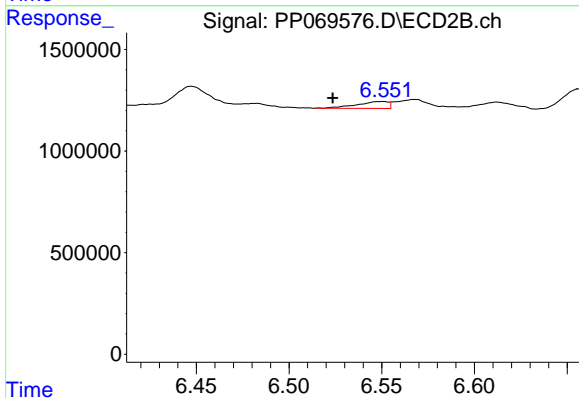
R.T.: 6.320 min  
 Delta R.T.: 0.025 min  
 Response: 1380045  
 Conc: 18.18 ng/ml



#29 AR-1254-4

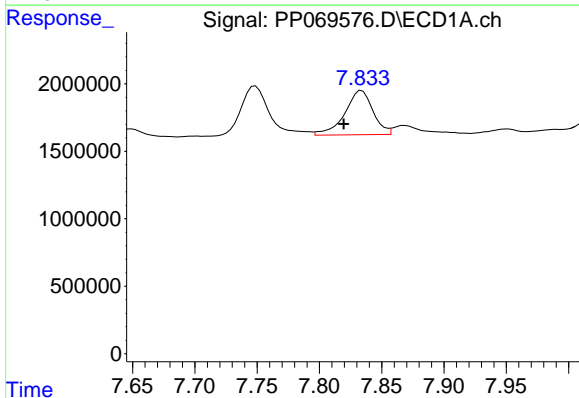
R.T.: 7.412 min  
 Delta R.T.: 0.009 min  
 Response: 401477  
 Conc: 5.89 ng/ml

Instrument :  
 ECD\_P  
 ClientSampleId :  
 RB21140



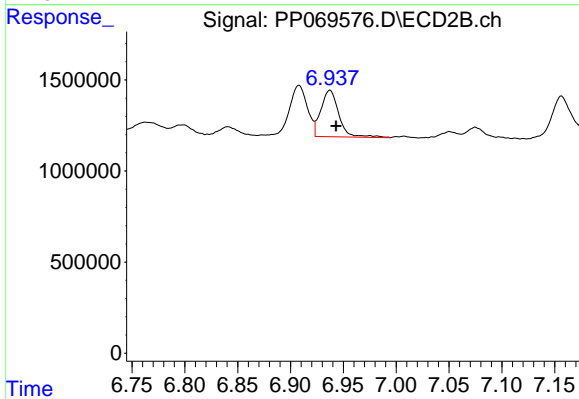
#29 AR-1254-4

R.T.: 6.550 min  
 Delta R.T.: 0.026 min  
 Response: 405322  
 Conc: 7.91 ng/ml



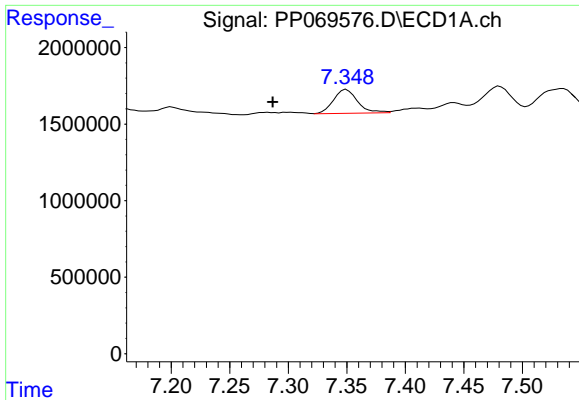
#30 AR-1254-5

R.T.: 7.834 min  
 Delta R.T.: 0.015 min  
 Response: 5168868  
 Conc: 75.96 ng/ml



#30 AR-1254-5

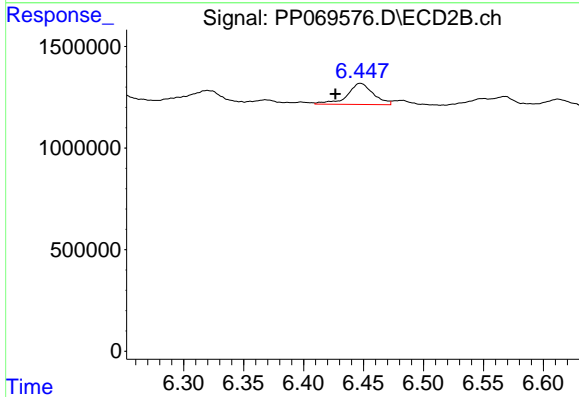
R.T.: 6.937 min  
 Delta R.T.: -0.006 min  
 Response: 3008126  
 Conc: 45.19 ng/ml



#31 AR-1260-1

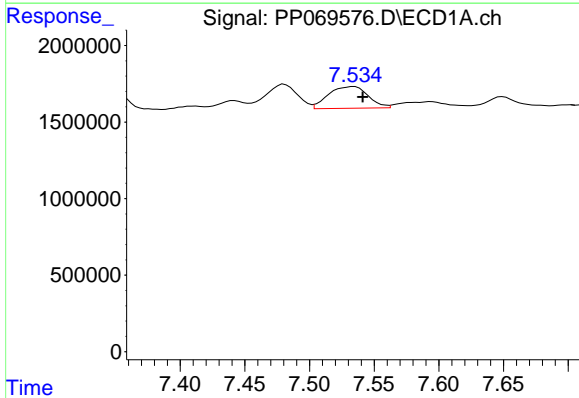
R.T.: 7.350 min  
 Delta R.T.: 0.063 min  
 Response: 2216759  
 Conc: 37.93 ng/ml

Instrument :  
 ECD\_P  
 ClientSampleId :  
 RB21140



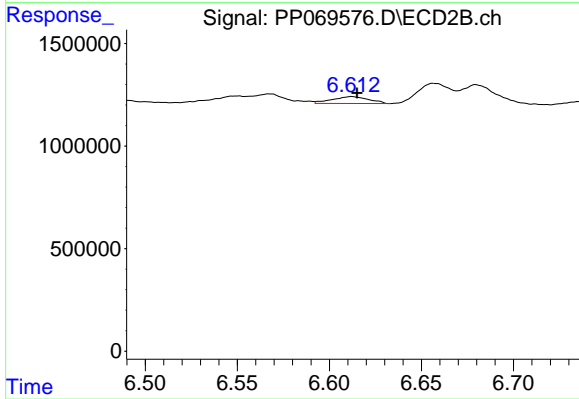
#31 AR-1260-1

R.T.: 6.447 min  
 Delta R.T.: 0.021 min  
 Response: 1574389  
 Conc: 32.64 ng/ml



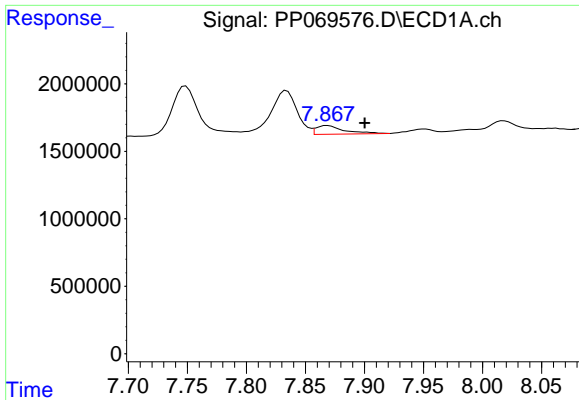
#32 AR-1260-2

R.T.: 7.535 min  
 Delta R.T.: -0.007 min  
 Response: 3020243  
 Conc: 38.81 ng/ml



#32 AR-1260-2

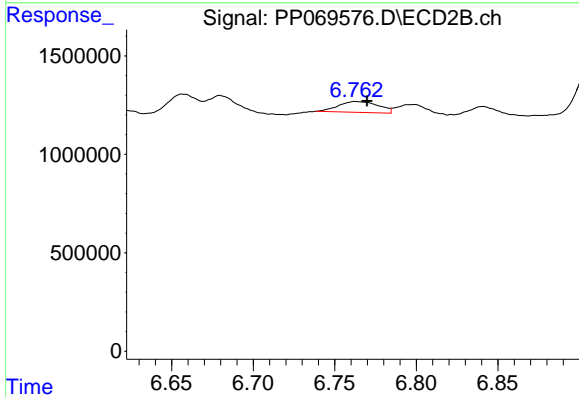
R.T.: 6.612 min  
 Delta R.T.: -0.003 min  
 Response: 461452  
 Conc: 7.53 ng/ml



#33 AR-1260-3

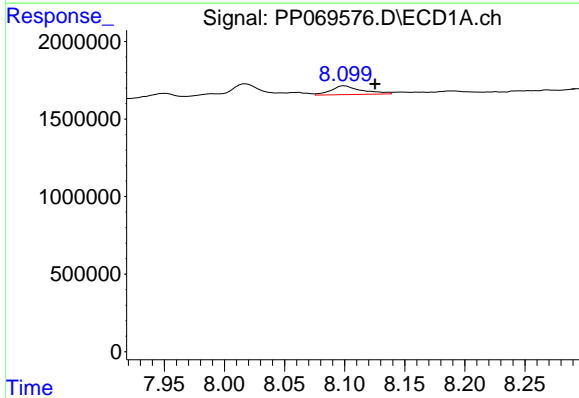
R.T.: 7.869 min  
 Delta R.T.: -0.032 min  
 Response: 1063460  
 Conc: 17.01 ng/ml

Instrument :  
 ECD\_P  
 ClientSampleId :  
 RB21140



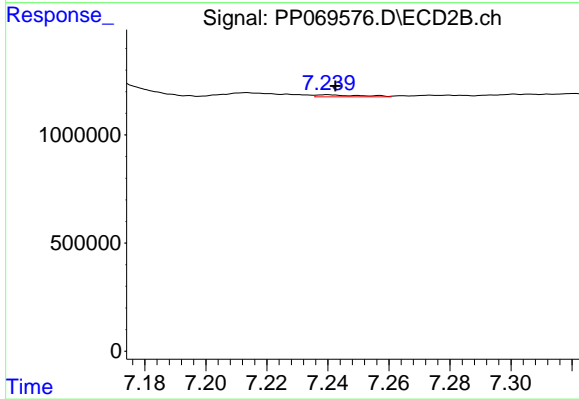
#33 AR-1260-3

R.T.: 6.763 min  
 Delta R.T.: -0.007 min  
 Response: 940349  
 Conc: 15.63 ng/ml



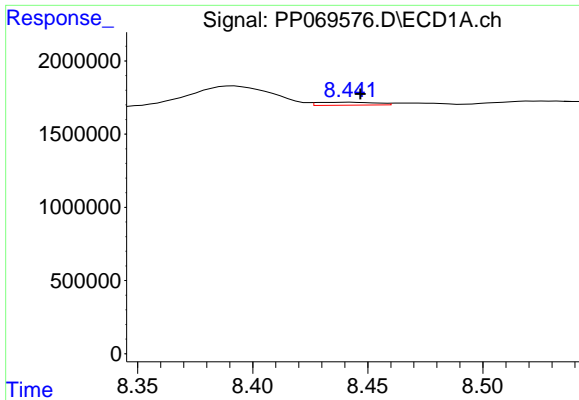
#34 AR-1260-4

R.T.: 8.100 min  
 Delta R.T.: -0.025 min  
 Response: 1013190  
 Conc: 15.36 ng/ml



#34 AR-1260-4

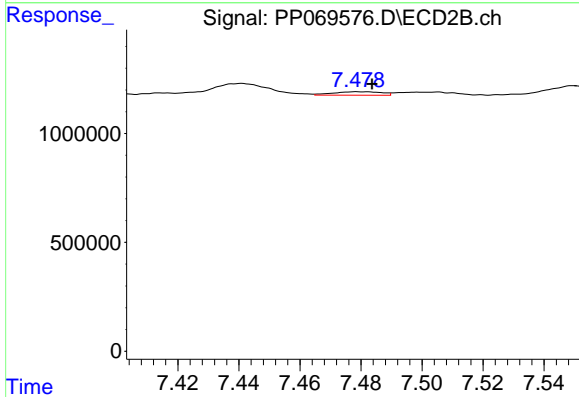
R.T.: 7.240 min  
 Delta R.T.: -0.003 min  
 Response: 93674  
 Conc: 2.02 ng/ml



#35 AR-1260-5

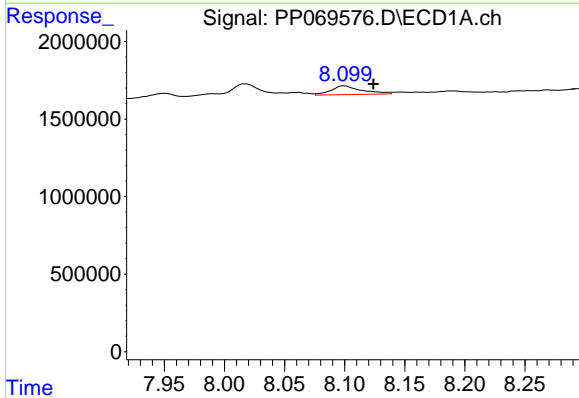
R.T.: 8.443 min  
 Delta R.T.: -0.004 min  
 Response: 352845  
 Conc: 2.69 ng/ml

Instrument :  
 ECD\_P  
 ClientSampleId :  
 RB21140



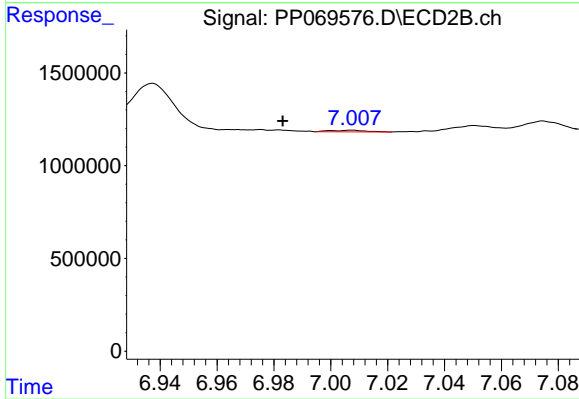
#35 AR-1260-5

R.T.: 7.479 min  
 Delta R.T.: -0.004 min  
 Response: 177634  
 Conc: 1.60 ng/ml



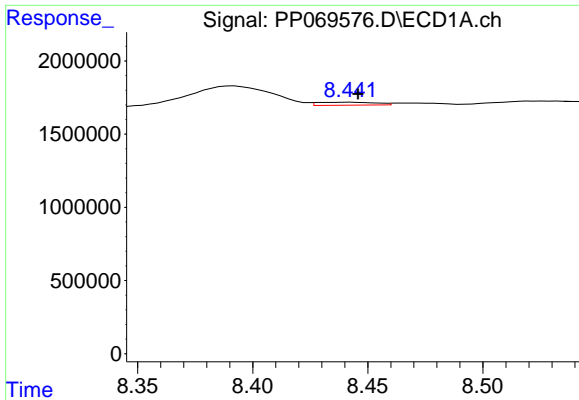
#36 AR-1262-1

R.T.: 8.100 min  
 Delta R.T.: -0.024 min  
 Response: 1013190  
 Conc: 12.82 ng/ml



#36 AR-1262-1

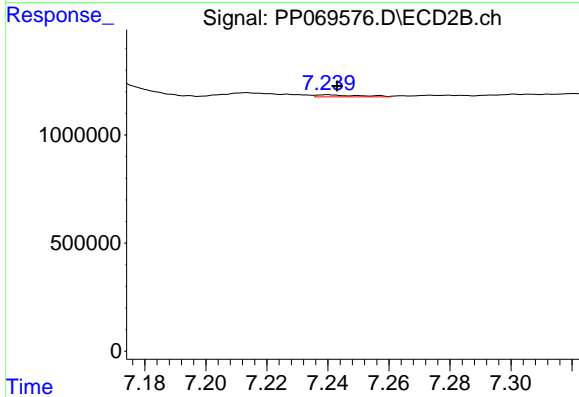
R.T.: 7.007 min  
 Delta R.T.: 0.024 min  
 Response: 71344  
 Conc: 1.00 ng/ml



#37 AR-1262-2

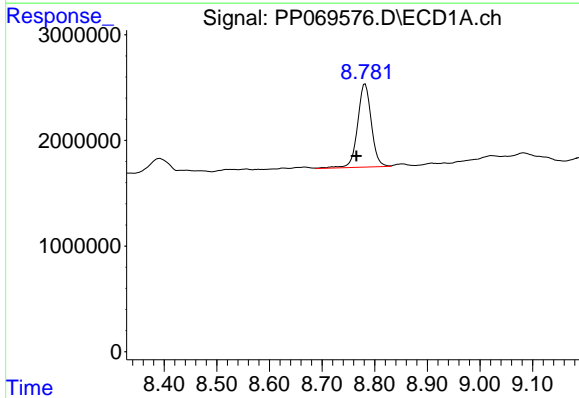
R.T.: 8.443 min  
 Delta R.T.: -0.003 min  
 Response: 352845  
 Conc: 2.31 ng/ml

Instrument :  
 ECD\_P  
 ClientSampleId :  
 RB21140



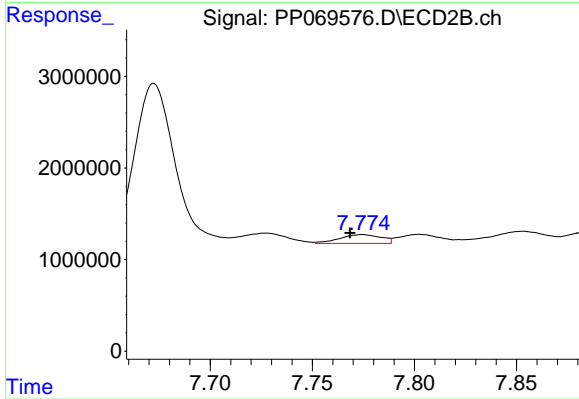
#37 AR-1262-2

R.T.: 7.240 min  
 Delta R.T.: -0.003 min  
 Response: 93674  
 Conc: 1.54 ng/ml



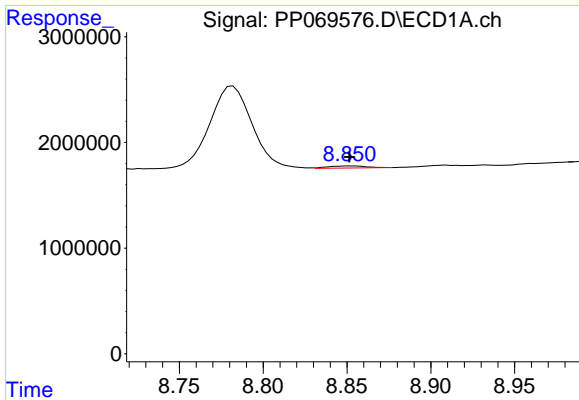
#38 AR-1262-3

R.T.: 8.782 min  
 Delta R.T.: 0.016 min  
 Response: 14276836  
 Conc: 134.33 ng/ml



#38 AR-1262-3

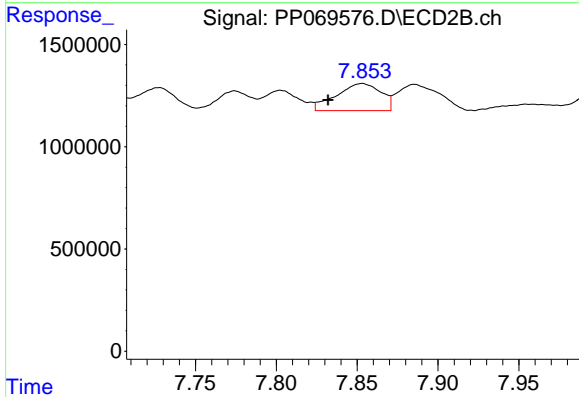
R.T.: 7.774 min  
 Delta R.T.: 0.006 min  
 Response: 1371350  
 Conc: 26.22 ng/ml



#39 AR-1262-4

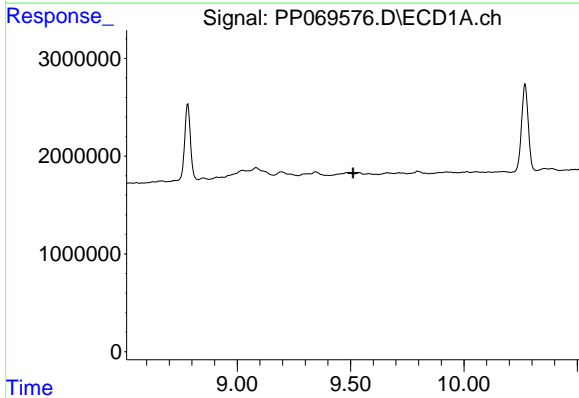
R.T.: 8.852 min  
 Delta R.T.: 0.000 min  
 Response: 296927  
 Conc: 3.63 ng/ml

Instrument :  
 ECD\_P  
 ClientSampleId :  
 RB21140



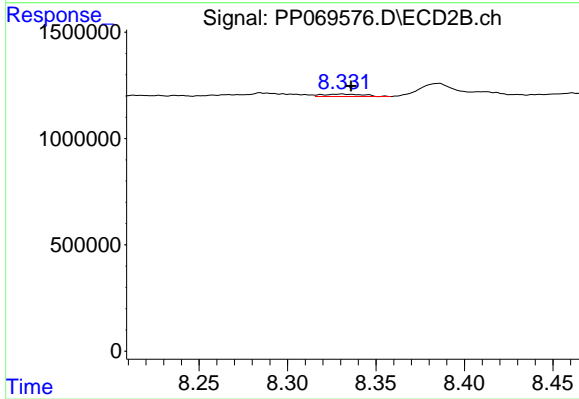
#39 AR-1262-4

R.T.: 7.853 min  
 Delta R.T.: 0.021 min  
 Response: 2551161  
 Conc: 27.60 ng/ml



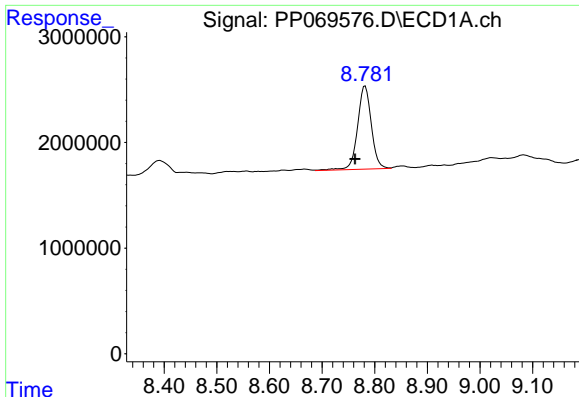
#40 AR-1262-5

R.T.: 0.000 min  
 Exp R.T. : 9.511 min  
 Response: 0  
 Conc: N.D.



#40 AR-1262-5

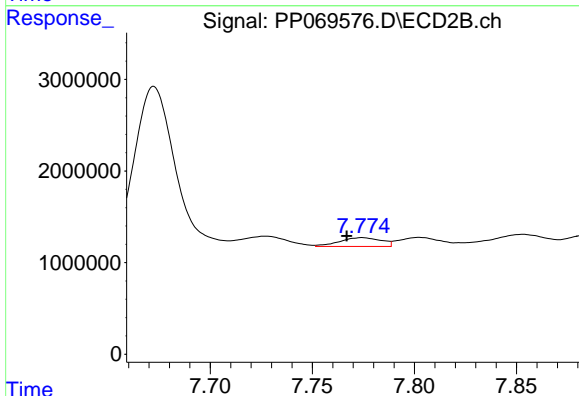
R.T.: 8.331 min  
 Delta R.T.: -0.005 min  
 Response: 188316  
 Conc: 3.94 ng/ml



#41 AR-1268-1

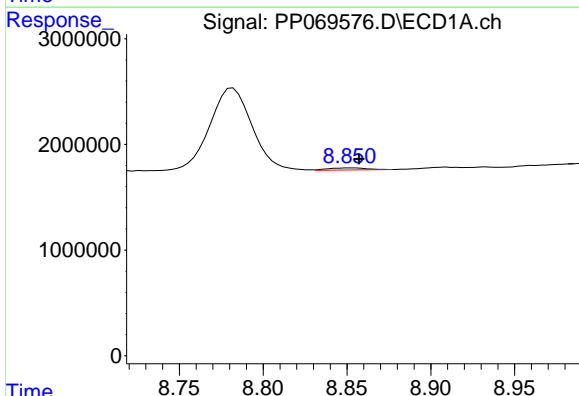
R.T.: 8.782 min  
 Delta R.T.: 0.019 min  
 Response: 14276836  
 Conc: 80.85 ng/ml

Instrument :  
 ECD\_P  
 ClientSampleId :  
 RB21140



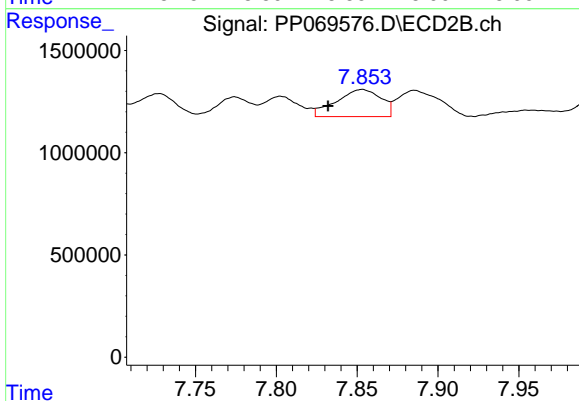
#41 AR-1268-1

R.T.: 7.774 min  
 Delta R.T.: 0.007 min  
 Response: 1371350  
 Conc: 9.45 ng/ml



#42 AR-1268-2

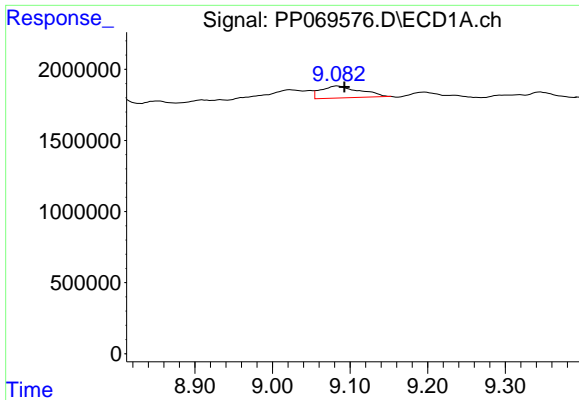
R.T.: 8.852 min  
 Delta R.T.: -0.005 min  
 Response: 296927  
 Conc: 1.89 ng/ml



#42 AR-1268-2

R.T.: 7.853 min  
 Delta R.T.: 0.021 min  
 Response: 2551161  
 Conc: 19.21 ng/ml

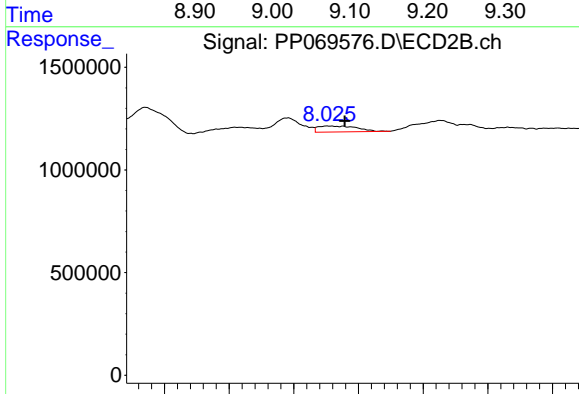




#43 AR-1268-3

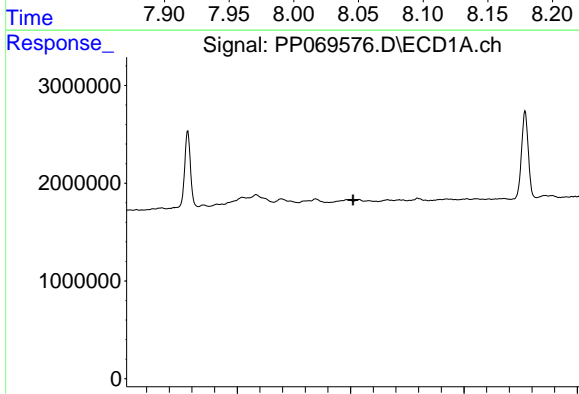
R.T.: 9.083 min  
 Delta R.T.: -0.010 min  
 Response: 3066652  
 Conc: 22.93 ng/ml

Instrument :  
 ECD\_P  
 ClientSampleId :  
 RB21140



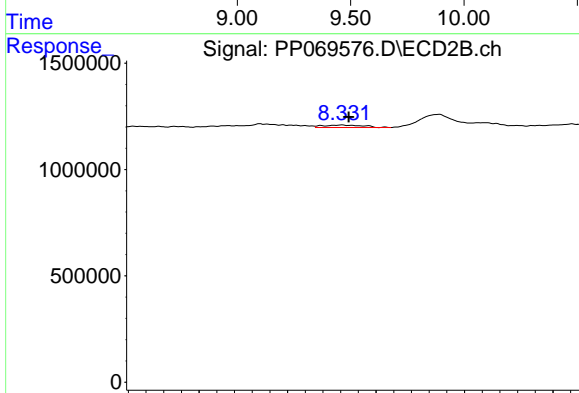
#43 AR-1268-3

R.T.: 8.026 min  
 Delta R.T.: -0.013 min  
 Response: 599895  
 Conc: 5.27 ng/ml



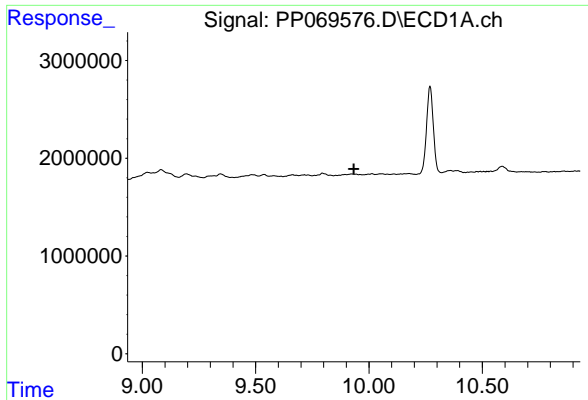
#44 AR-1268-4

R.T.: 0.000 min  
 Exp R.T. : 9.511 min  
 Response: 0  
 Conc: N.D.



#44 AR-1268-4

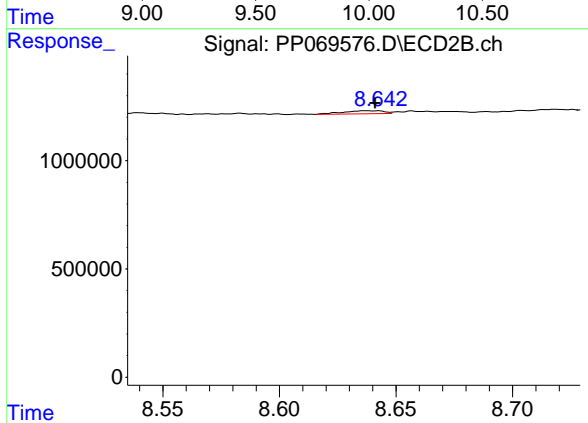
R.T.: 8.331 min  
 Delta R.T.: -0.004 min  
 Response: 188316  
 Conc: 3.62 ng/ml



#45 AR-1268-5

R.T.: 0.000 min  
 Exp R.T.: 9.933 min  
 Response: 0  
 Conc: N.D.

Instrument :  
 ECD\_P  
 ClientSampleId :  
 RB21140



#45 AR-1268-5

R.T.: 8.637 min  
 Delta R.T.: -0.004 min  
 Response: 169199  
 Conc: 0.48 ng/ml