

Data Path : Z:\pestpcbsrv\HPCHEM1\ECD_P\Data\PP020625\
 Data File : PP069583.D
 Signal(s) : Signal #1: ECD1A.ch Signal #2: ECD2B.ch
 Acq On : 06 Feb 2025 22:03
 Operator : YP\AJ
 Sample : I.BLK
 Misc :
 ALS Vial : 2 Sample Multiplier: 1

Instrument :
 ECD_P
 ClientSampleId :
 I.BLK

Integration File signal 1: autoint1.e
 Integration File signal 2: autoint2.e
 Quant Time: Feb 07 02:07:30 2025
 Quant Method : Z:\pestpcbsrv\HPCHEM1\ECD_P\methods\PP012825.M
 Quant Title : GC EXTRACTABLES
 QLast Update : Wed Jan 29 00:13:21 2025
 Response via : Initial Calibration
 Integrator: ChemStation

Volume Inj. : 2 µl
 Signal #1 Phase : ZB-MR2 Signal #2 Phase: ZB-MR2
 Signal #1 Info : 30Mx0.32mmx 0.50µ Signal #2 Info : 30M x 0.32mm x 0.25µm

Compound	RT#1	RT#2	Resp#1	Resp#2	ng/ml	ng/ml

System Monitoring Compounds						
1) SA Tetrachlo...	4.534	3.837	30068280	19485207	21.005	21.831
2) SA Decachlor...	10.269	8.903	23369377	24646252	21.383	22.035
Target Compounds						
3) L1 AR-1016-1	5.758f	4.933	1928893	1079178	41.631	33.088
4) L1 AR-1016-2	5.758f	4.933	1928893	1079178	28.417	24.004
5) L1 AR-1016-3	5.758	5.138	1928893	60383	45.283	2.427 #
6) L1 AR-1016-4	0.000	5.172	0	778636	N.D.	38.553 #
7) L1 AR-1016-5	0.000	5.382	0	547348	N.D.	20.405 #
8) L2 AR-1221-1	0.000	4.039	0	24032	N.D.	1.951 #
9) L2 AR-1221-2	4.838	4.139	410616	411560	29.988	42.502 #
10) L2 AR-1221-3	4.838f	4.224	410616	163384	9.790	5.600 #
11) L3 AR-1232-1	4.838f	4.224	410616	163384	12.333	6.959 #
12) L3 AR-1232-2	0.000	4.933	0	1079178	N.D.	45.783 #
13) L3 AR-1232-3	5.758f	5.121	1928893	98539	56.139	7.611 #
14) L3 AR-1232-4	0.000	5.241	0	170250	N.D.	15.357 #
15) L3 AR-1232-5	5.992	5.382	800241	547348	69.814	44.827 #
16) L4 AR-1242-1	5.758f	4.933	1928893	1079178	46.251	37.430
17) L4 AR-1242-2	5.758f	4.933	1928893	1079178	32.698	27.392
18) L4 AR-1242-3	5.758	5.138	1928893	60383	51.994	2.683 #
19) L4 AR-1242-4	0.000	5.241	0	170250	N.D.	7.888 #
20) L4 AR-1242-5	0.000	5.765	0	871788	N.D.	30.304 #
21) L5 AR-1248-1	5.623f	4.933	7763059	1079178	239.312	49.030 #
22) L5 AR-1248-2	5.992	5.172	800241	778636	18.853	25.899 #
23) L5 AR-1248-3	0.000	5.241	0	170250	N.D.	5.495 #
24) L5 AR-1248-4	6.534	5.382	251380	547348	4.560	14.816 #
25) L5 AR-1248-5	6.534f	5.765	251380	871788	4.709	23.316 #
26) L6 AR-1254-1	6.534	5.765	251380	871788	4.344	15.835 #
29) L6 AR-1254-4	0.000	6.536	0	261904	N.D.	5.110 #
30) L6 AR-1254-5	0.000	6.934	0	112885	N.D.	1.696 #
31) L7 AR-1260-1	7.332f	6.450	988990	614662	16.924	12.745
32) L7 AR-1260-2	7.544	6.590	998784	778852	12.836	12.705
33) L7 AR-1260-3	0.000	6.765	0	1189360	N.D.	19.771 #
36) L8 AR-1262-1	0.000	6.934f	0	112885	N.D.	1.590 #
38) L8 AR-1262-3	0.000	7.766	0	647742	N.D.	12.385 #
39) L8 AR-1262-4	0.000	7.828	0	162508	N.D.	1.758 #
40) L8 AR-1262-5	0.000	8.275f	0	48391	N.D.	1.013 #
41) L9 AR-1268-1	0.000	7.766	0	647742	N.D.	4.463 #
42) L9 AR-1268-2	0.000	7.828	0	162508	N.D.	1.224 #
44) L9 AR-1268-4	0.000	8.275f	0	48391	N.D.	0.929 #
45) L9 AR-1268-5	0.000	8.631	0	115040	N.D.	0.323 #

Data Path : Z:\pestpcbsrv\HPCHEM1\ECD_P\Data\PP020625\
Data File : PP069583.D
Signal(s) : Signal #1: ECD1A.ch Signal #2: ECD2B.ch
Acq On : 06 Feb 2025 22:03
Operator : YP\AJ
Sample : I.BLK
Misc :
ALS Vial : 2 Sample Multiplier: 1

Instrument :
ECD_P
ClientSampleId :
I.BLK

Integration File signal 1: autoint1.e
Integration File signal 2: autoint2.e
Quant Time: Feb 07 02:07:30 2025
Quant Method : Z:\pestpcbsrv\HPCHEM1\ECD_P\methods\PP012825.M
Quant Title : GC EXTRACTABLES
QLast Update : Wed Jan 29 00:13:21 2025
Response via : Initial Calibration
Integrator: ChemStation

Volume Inj. : 2 µl
Signal #1 Phase : ZB-MR1 Signal #2 Phase: ZB-MR2
Signal #1 Info : 30Mx0.32mmx 0.50µ Signal #2 Info : 30M x 0.32mm x 0.25µm

Compound	RT#1	RT#2	Resp#1	Resp#2	ng/ml	ng/ml
----------	------	------	--------	--------	-------	-------

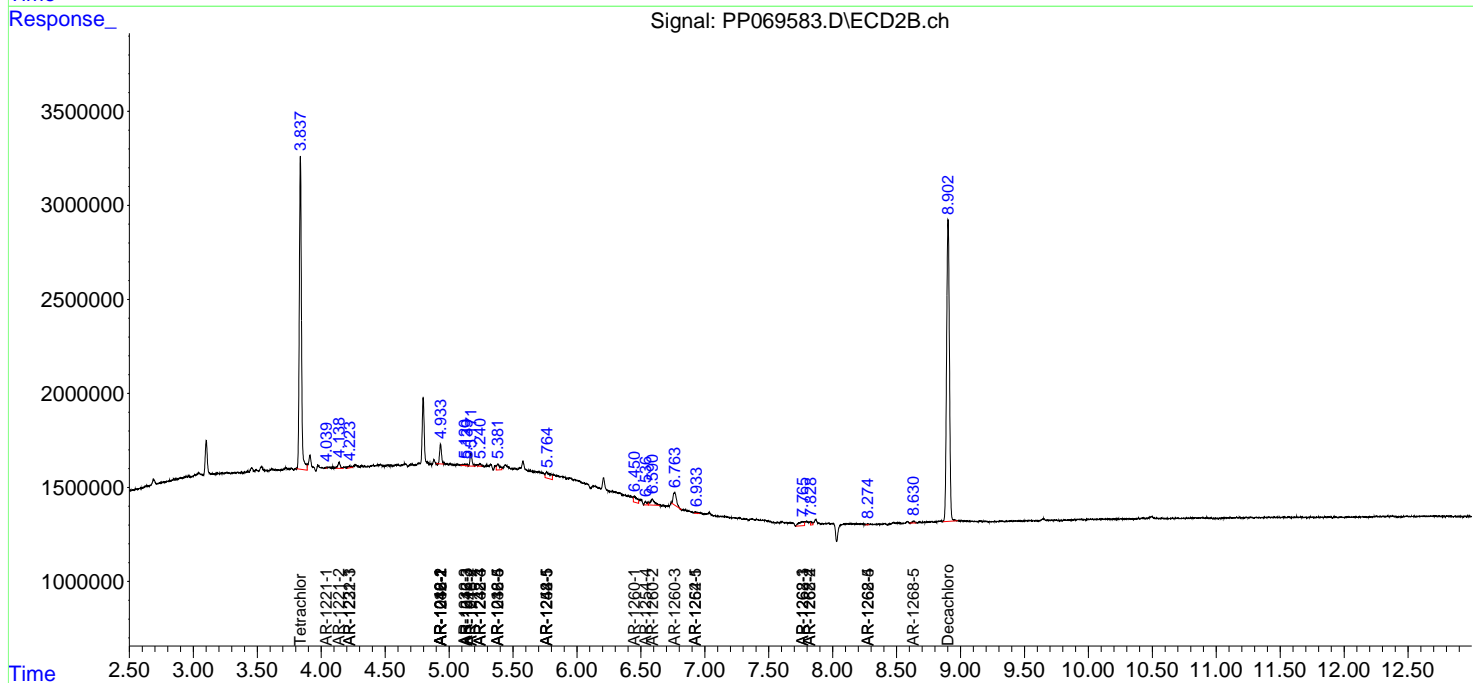
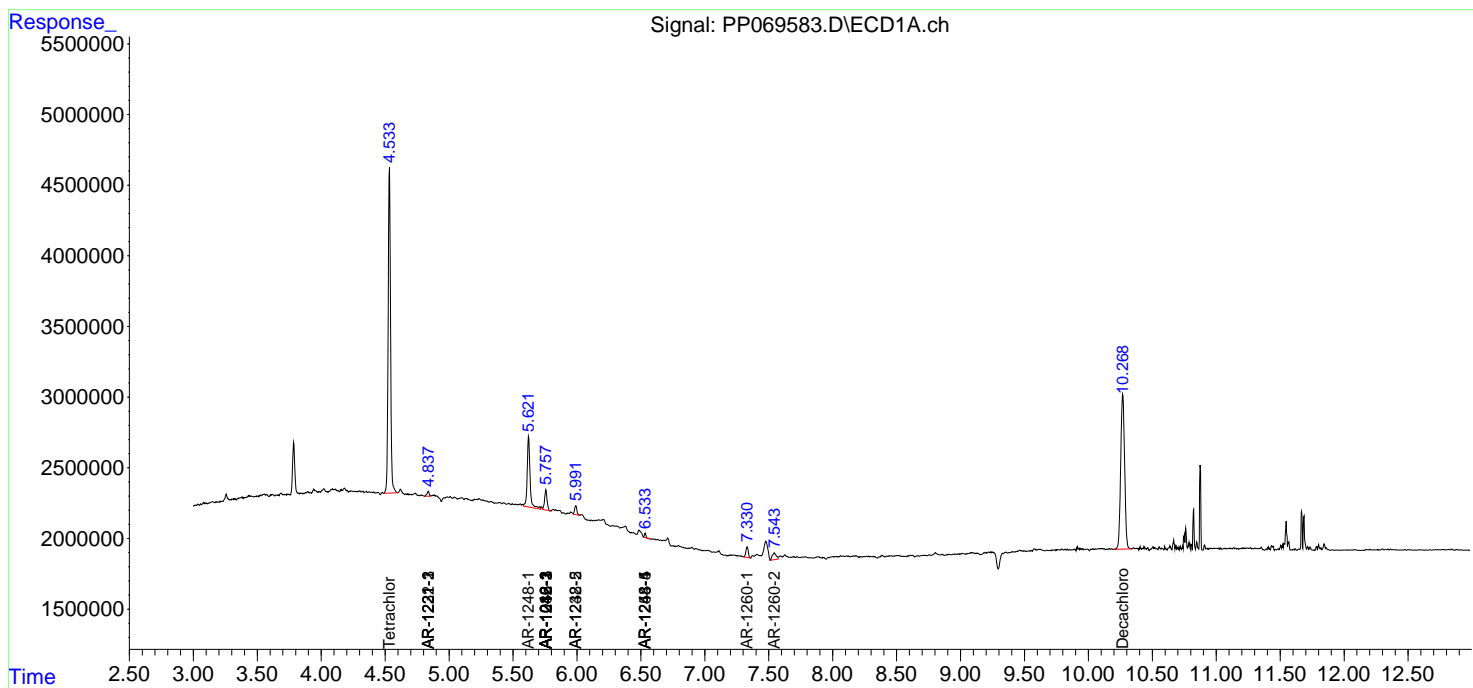
(f)=RT Delta > 1/2 Window (#)=Amounts differ by > 25% (m)=manual int.

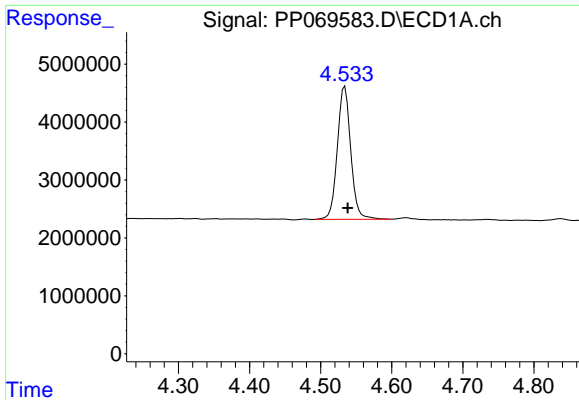
Data Path : Z:\pestpcbsrv\HPCHEM1\ECD_P\Data\PP020625\
 Data File : PP069583.D
 Signal(s) : Signal #1: ECD1A.ch Signal #2: ECD2B.ch
 Acq On : 06 Feb 2025 22:03
 Operator : YP\AJ
 Sample : I.BLK
 Misc :
 ALS Vial : 2 Sample Multiplier: 1

Instrument :
 ECD_P
 ClientSampleId :
 I.BLK

Integration File signal 1: autoint1.e
 Integration File signal 2: autoint2.e
 Quant Time: Feb 07 02:07:30 2025
 Quant Method : Z:\pestpcbsrv\HPCHEM1\ECD_P\methods\PP012825.M
 Quant Title : GC EXTRACTABLES
 QLast Update : Wed Jan 29 00:13:21 2025
 Response via : Initial Calibration
 Integrator: ChemStation

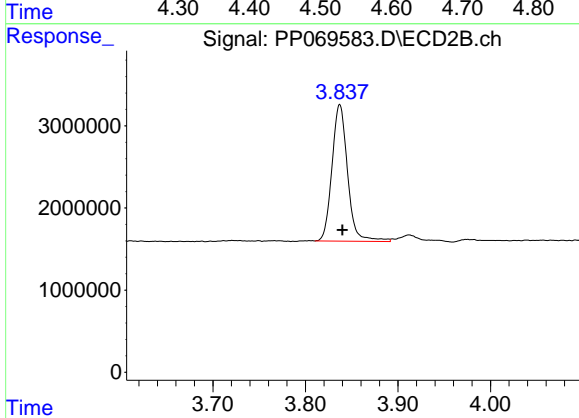
Volume Inj. : 2 µl
 Signal #1 Phase : ZB-MR1 Signal #2 Phase: ZB-MR2
 Signal #1 Info : 30Mx0.32mmx 0.50µ Signal #2 Info : 30M x 0.32mm x 0.25µm



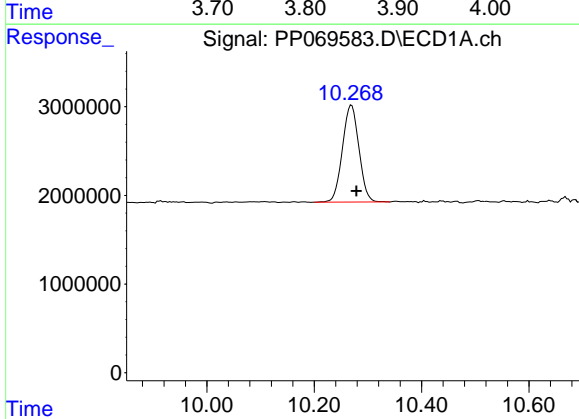


#1 Tetrachloro-m-xylene
 R.T.: 4.534 min
 Delta R.T.: -0.004 min
 Response: 30068280
 Conc: 21.01 ng/ml

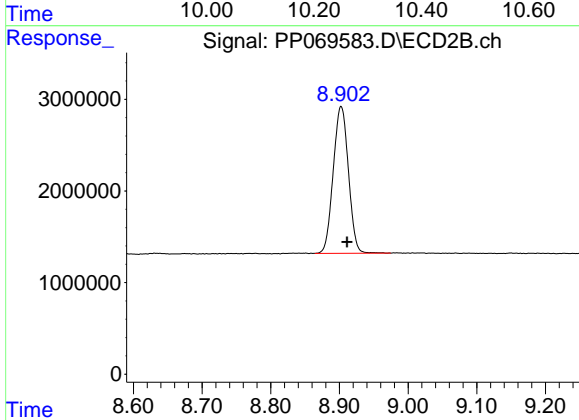
Instrument :
 ECD_P
 ClientSampleId :
 I.BLK



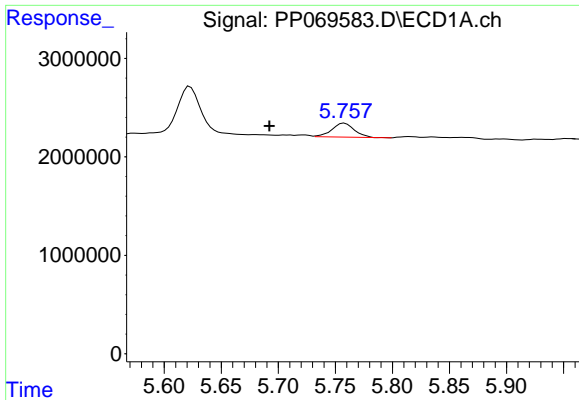
#1 Tetrachloro-m-xylene
 R.T.: 3.837 min
 Delta R.T.: -0.003 min
 Response: 19485207
 Conc: 21.83 ng/ml



#2 Decachlorobiphenyl
 R.T.: 10.269 min
 Delta R.T.: -0.009 min
 Response: 23369377
 Conc: 21.38 ng/ml



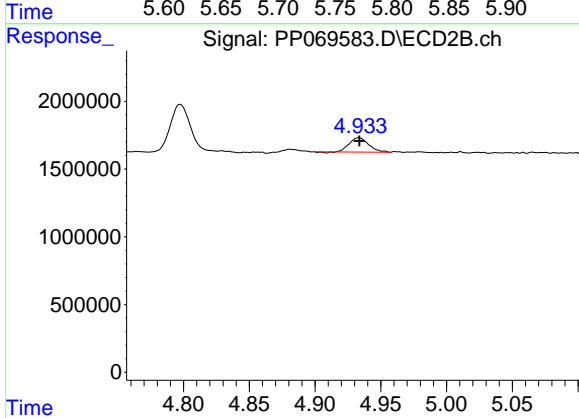
#2 Decachlorobiphenyl
 R.T.: 8.903 min
 Delta R.T.: -0.009 min
 Response: 24646252
 Conc: 22.04 ng/ml



#3 AR-1016-1

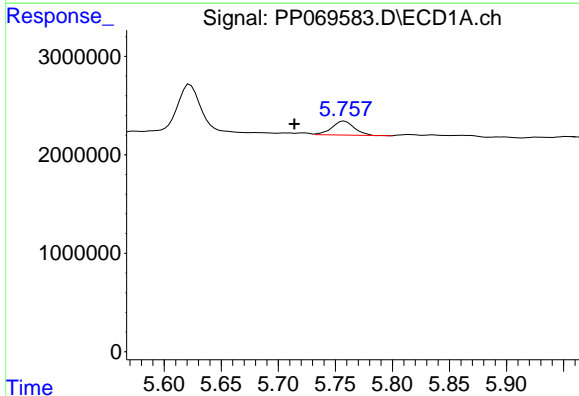
R.T.: 5.758 min
 Delta R.T.: 0.066 min
 Response: 1928893
 Conc: 41.63 ng/ml

Instrument :
 ECD_P
 ClientSampleId :
 I.BLK



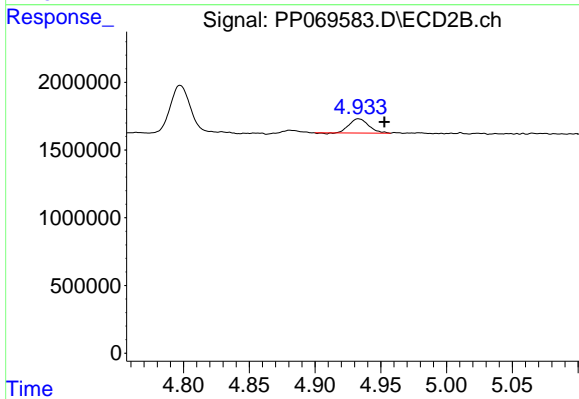
#3 AR-1016-1

R.T.: 4.933 min
 Delta R.T.: 0.000 min
 Response: 1079178
 Conc: 33.09 ng/ml



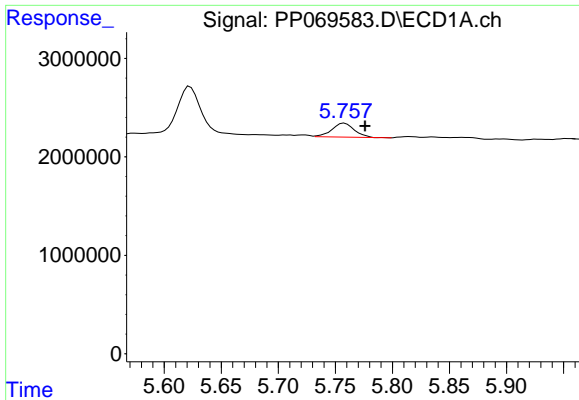
#4 AR-1016-2

R.T.: 5.758 min
 Delta R.T.: 0.044 min
 Response: 1928893
 Conc: 28.42 ng/ml



#4 AR-1016-2

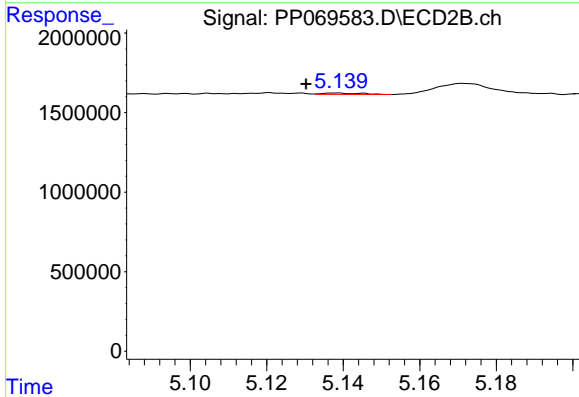
R.T.: 4.933 min
 Delta R.T.: -0.020 min
 Response: 1079178
 Conc: 24.00 ng/ml



#5 AR-1016-3

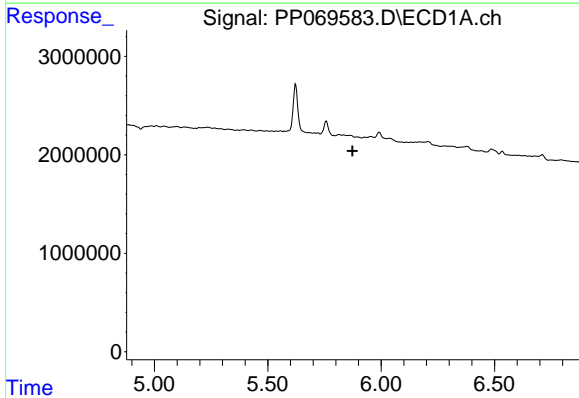
R.T.: 5.758 min
 Delta R.T.: -0.018 min
 Response: 1928893
 Conc: 45.28 ng/ml

Instrument :
 ECD_P
 ClientSampleId :
 I.BLK



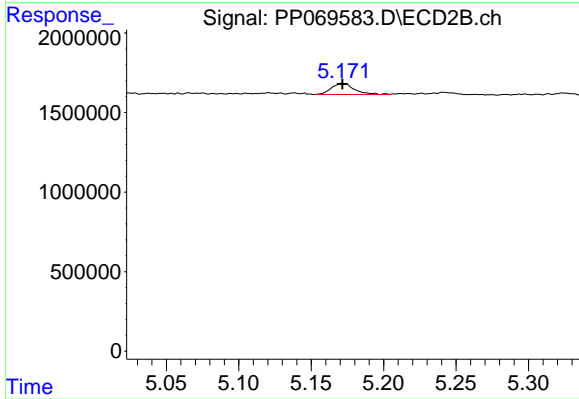
#5 AR-1016-3

R.T.: 5.138 min
 Delta R.T.: 0.008 min
 Response: 60383
 Conc: 2.43 ng/ml



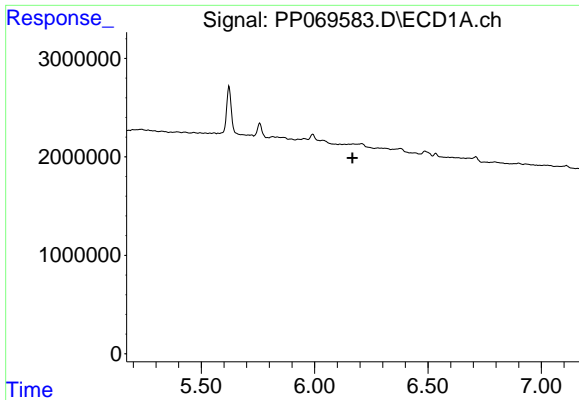
#6 AR-1016-4

R.T.: 0.000 min
 Exp R.T. : 5.874 min
 Response: 0
 Conc: N.D.



#6 AR-1016-4

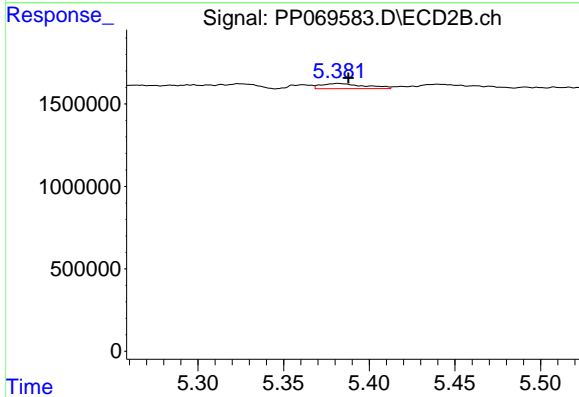
R.T.: 5.172 min
 Delta R.T.: 0.000 min
 Response: 778636
 Conc: 38.55 ng/ml



#7 AR-1016-5

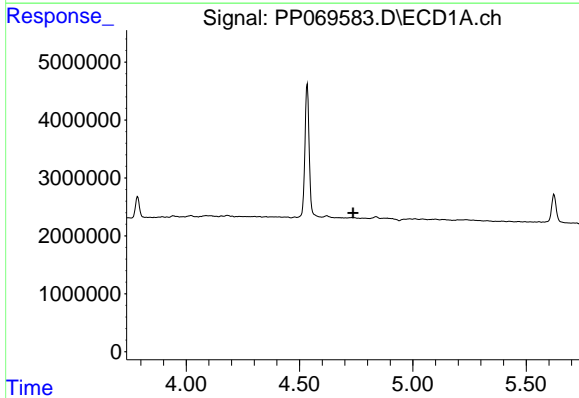
R.T.: 0.000 min
 Exp R.T.: 6.167 min
 Response: 0
 Conc: N.D.

Instrument :
 ECD_P
 ClientSampleId :
 I.BLK



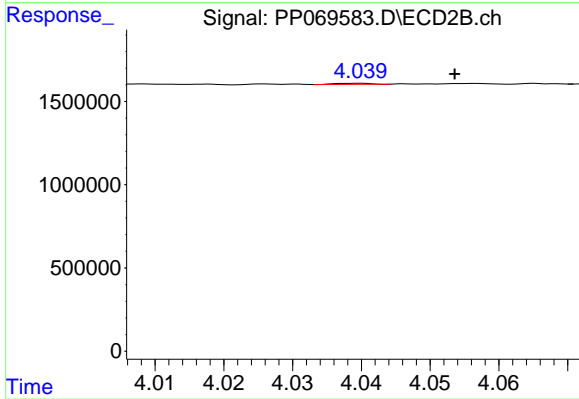
#7 AR-1016-5

R.T.: 5.382 min
 Delta R.T.: -0.006 min
 Response: 547348
 Conc: 20.41 ng/ml



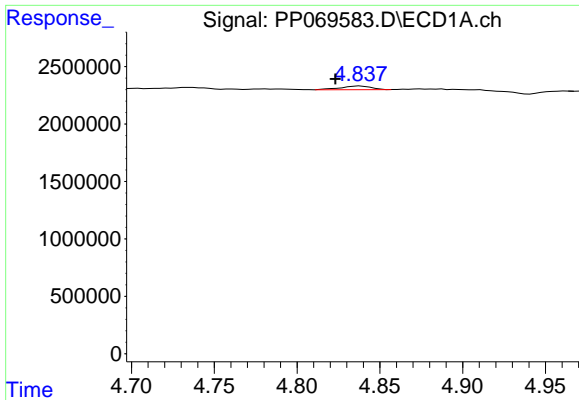
#8 AR-1221-1

R.T.: 0.000 min
 Exp R.T.: 4.737 min
 Response: 0
 Conc: N.D.



#8 AR-1221-1

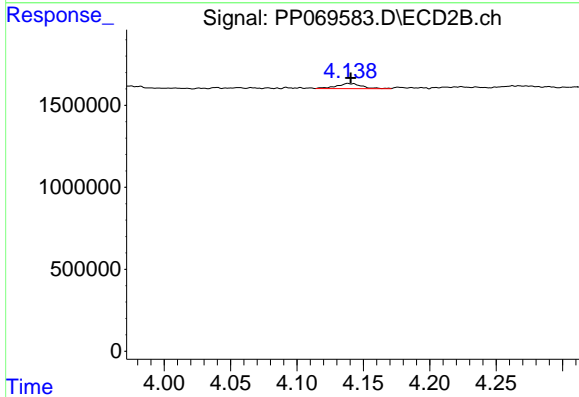
R.T.: 4.039 min
 Delta R.T.: -0.014 min
 Response: 24032
 Conc: 1.95 ng/ml



#9 AR-1221-2

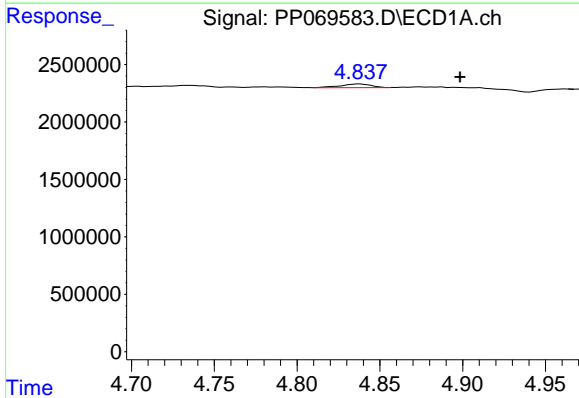
R.T.: 4.838 min
 Delta R.T.: 0.015 min
 Response: 410616
 Conc: 29.99 ng/ml

Instrument :
 ECD_P
 ClientSampleId :
 I.BLK



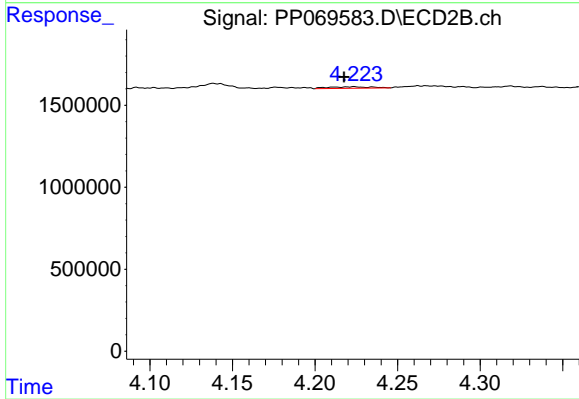
#9 AR-1221-2

R.T.: 4.139 min
 Delta R.T.: -0.002 min
 Response: 411560
 Conc: 42.50 ng/ml



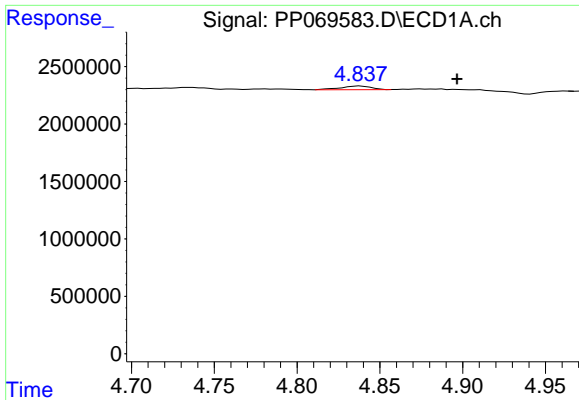
#10 AR-1221-3

R.T.: 4.838 min
 Delta R.T.: -0.060 min
 Response: 410616
 Conc: 9.79 ng/ml



#10 AR-1221-3

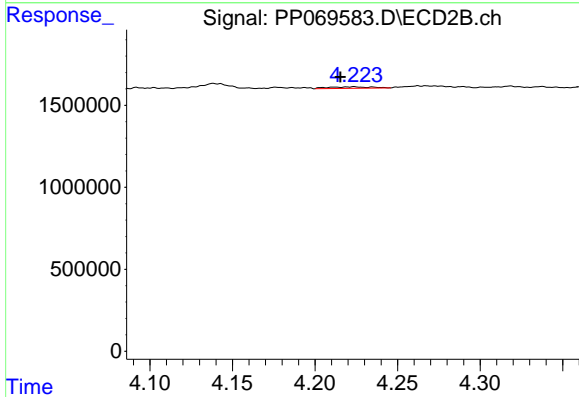
R.T.: 4.224 min
 Delta R.T.: 0.006 min
 Response: 163384
 Conc: 5.60 ng/ml



#11 AR-1232-1

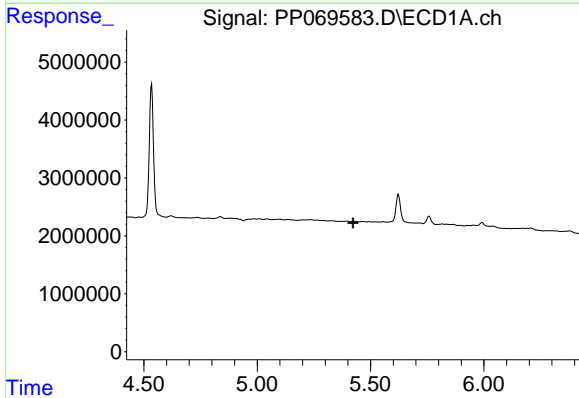
R.T.: 4.838 min
 Delta R.T.: -0.059 min
 Response: 410616
 Conc: 12.33 ng/ml

Instrument :
 ECD_P
 ClientSampleId :
 I.BLK



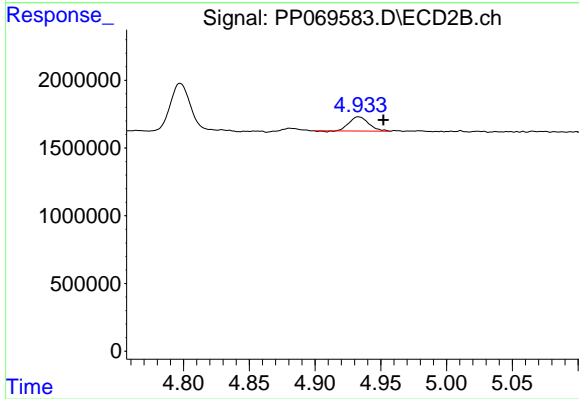
#11 AR-1232-1

R.T.: 4.224 min
 Delta R.T.: 0.008 min
 Response: 163384
 Conc: 6.96 ng/ml



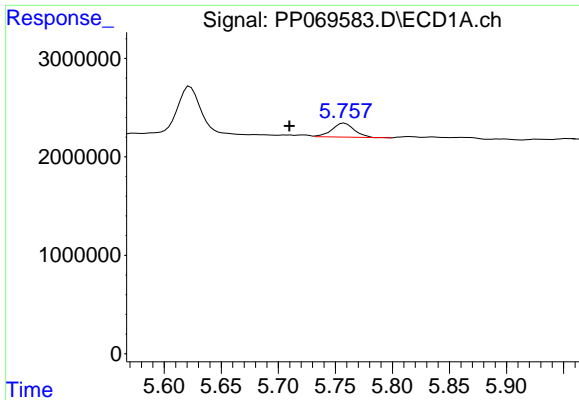
#12 AR-1232-2

R.T.: 0.000 min
 Exp R.T. : 5.424 min
 Response: 0
 Conc: N.D.



#12 AR-1232-2

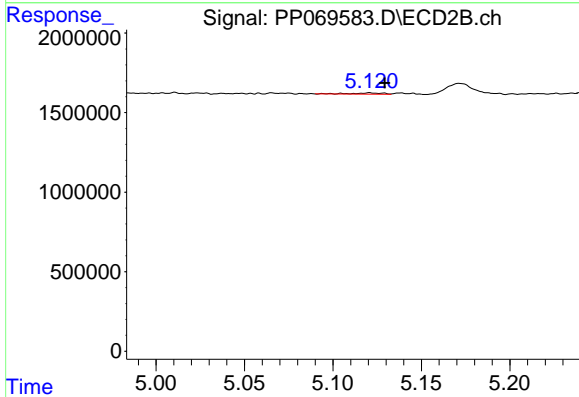
R.T.: 4.933 min
 Delta R.T.: -0.019 min
 Response: 1079178
 Conc: 45.78 ng/ml



#13 AR-1232-3

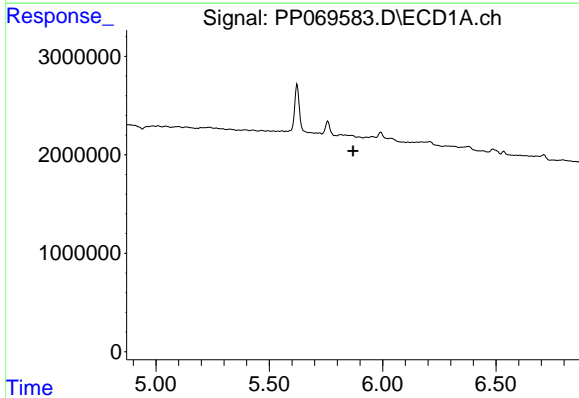
R.T.: 5.758 min
 Delta R.T.: 0.048 min
 Response: 1928893
 Conc: 56.14 ng/ml

Instrument :
 ECD_P
 ClientSampleId :
 I.BLK



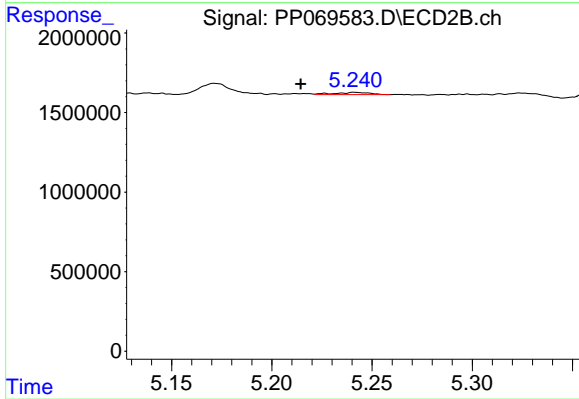
#13 AR-1232-3

R.T.: 5.121 min
 Delta R.T.: -0.009 min
 Response: 98539
 Conc: 7.61 ng/ml



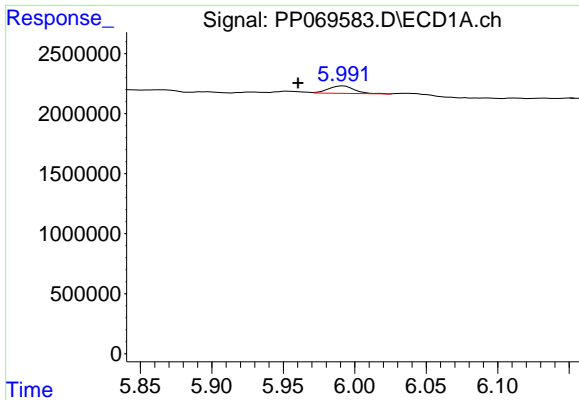
#14 AR-1232-4

R.T.: 0.000 min
 Exp R.T. : 5.870 min
 Response: 0
 Conc: N.D.



#14 AR-1232-4

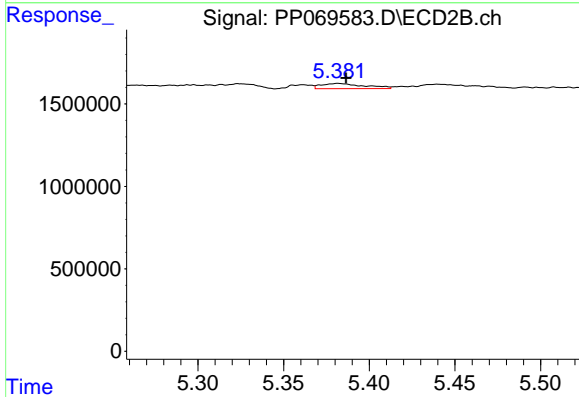
R.T.: 5.241 min
 Delta R.T.: 0.027 min
 Response: 170250
 Conc: 15.36 ng/ml



#15 AR-1232-5

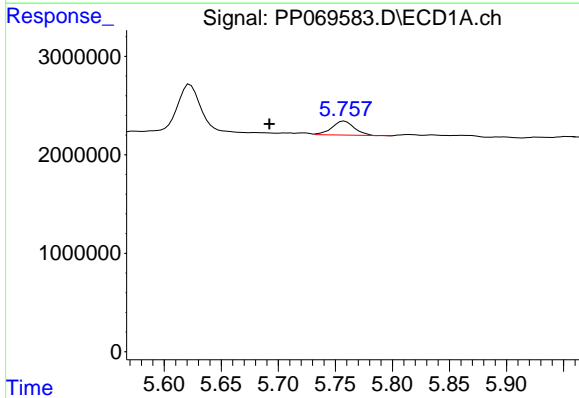
R.T.: 5.992 min
 Delta R.T.: 0.032 min
 Response: 800241
 Conc: 69.81 ng/ml

Instrument :
 ECD_P
 ClientSampleId :
 I.BLK



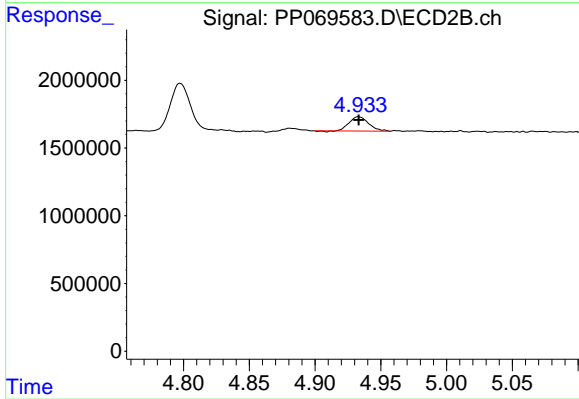
#15 AR-1232-5

R.T.: 5.382 min
 Delta R.T.: -0.005 min
 Response: 547348
 Conc: 44.83 ng/ml



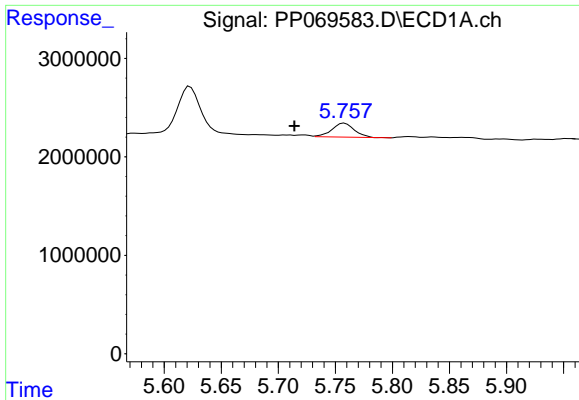
#16 AR-1242-1

R.T.: 5.758 min
 Delta R.T.: 0.066 min
 Response: 1928893
 Conc: 46.25 ng/ml



#16 AR-1242-1

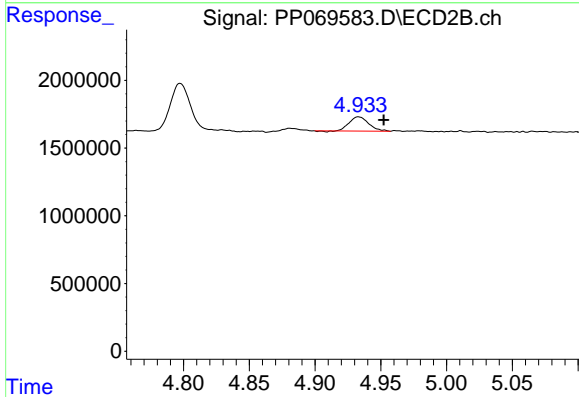
R.T.: 4.933 min
 Delta R.T.: 0.000 min
 Response: 1079178
 Conc: 37.43 ng/ml



#17 AR-1242-2

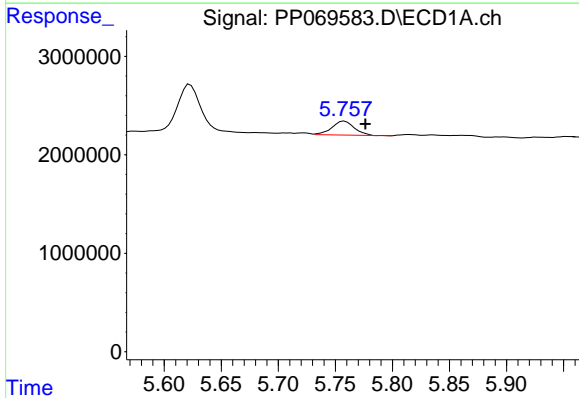
R.T.: 5.758 min
 Delta R.T.: 0.044 min
 Response: 1928893
 Conc: 32.70 ng/ml

Instrument :
 ECD_P
 ClientSampleId :
 I.BLK



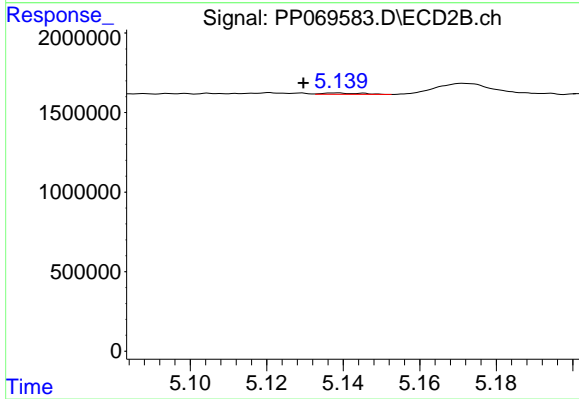
#17 AR-1242-2

R.T.: 4.933 min
 Delta R.T.: -0.019 min
 Response: 1079178
 Conc: 27.39 ng/ml



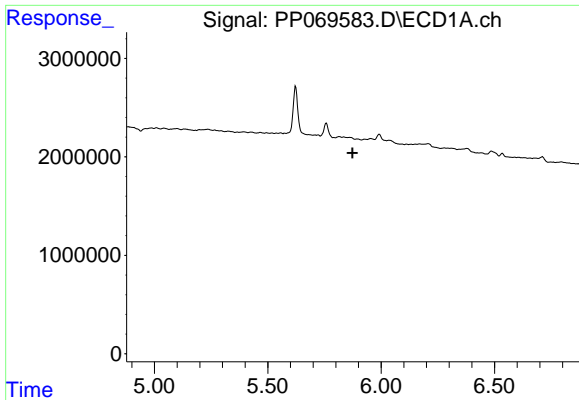
#18 AR-1242-3

R.T.: 5.758 min
 Delta R.T.: -0.018 min
 Response: 1928893
 Conc: 51.99 ng/ml



#18 AR-1242-3

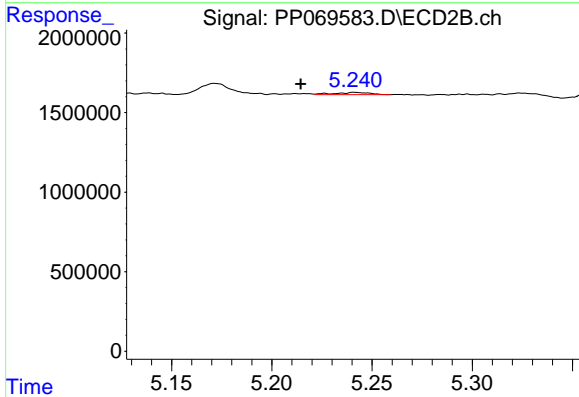
R.T.: 5.138 min
 Delta R.T.: 0.009 min
 Response: 60383
 Conc: 2.68 ng/ml



#19 AR-1242-4

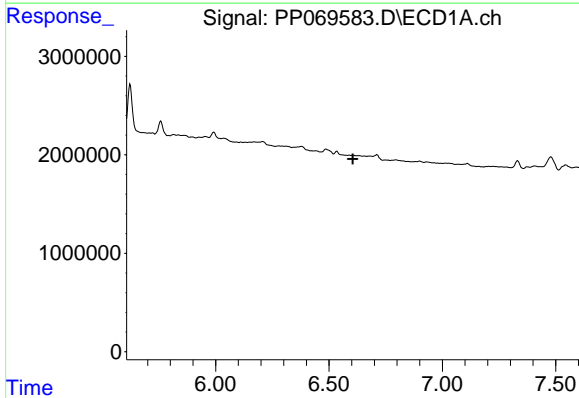
R.T.: 0.000 min
 Exp R.T. : 5.874 min
 Response: 0
 Conc: N.D.

Instrument :
 ECD_P
 ClientSampleId :
 I.BLK



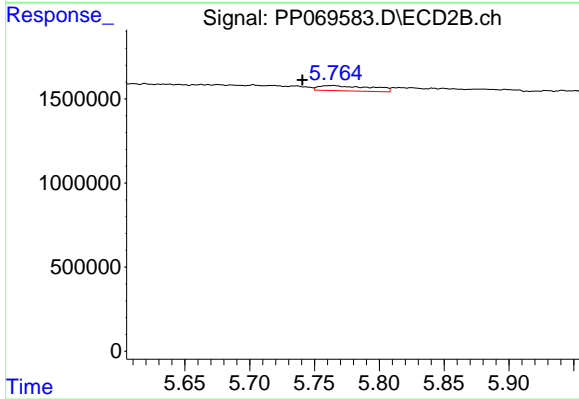
#19 AR-1242-4

R.T.: 5.241 min
 Delta R.T.: 0.027 min
 Response: 170250
 Conc: 7.89 ng/ml



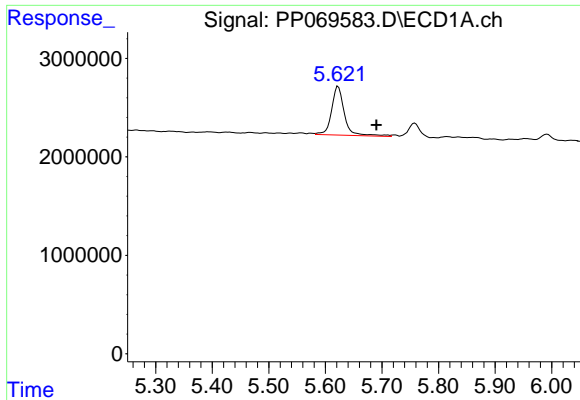
#20 AR-1242-5

R.T.: 0.000 min
 Exp R.T. : 6.605 min
 Response: 0
 Conc: N.D.



#20 AR-1242-5

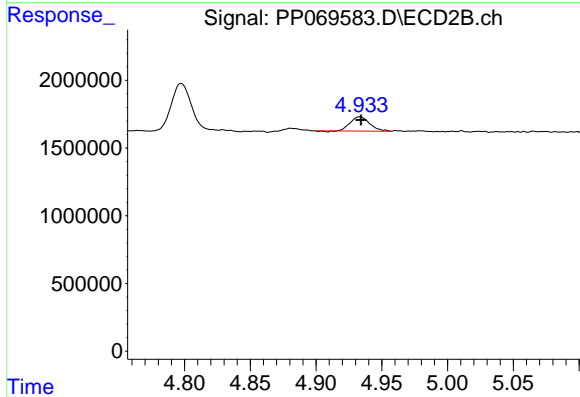
R.T.: 5.765 min
 Delta R.T.: 0.024 min
 Response: 871788
 Conc: 30.30 ng/ml



#21 AR-1248-1

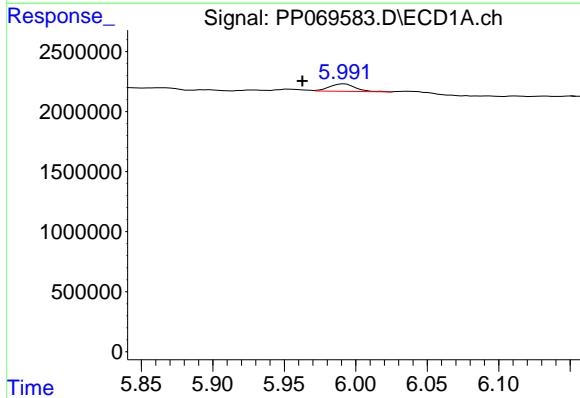
R.T.: 5.623 min
 Delta R.T.: -0.067 min
 Response: 7763059
 Conc: 239.31 ng/ml

Instrument :
 ECD_P
 ClientSampleId :
 I.BLK



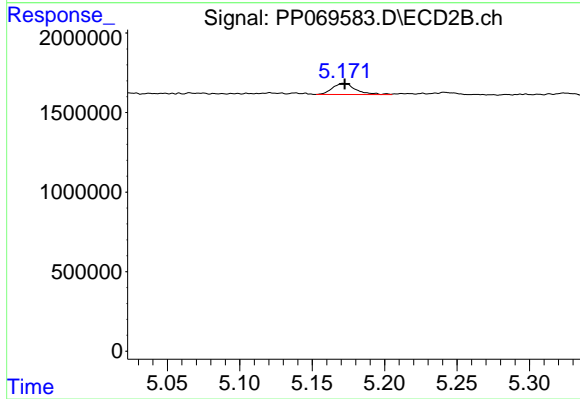
#21 AR-1248-1

R.T.: 4.933 min
 Delta R.T.: 0.000 min
 Response: 1079178
 Conc: 49.03 ng/ml



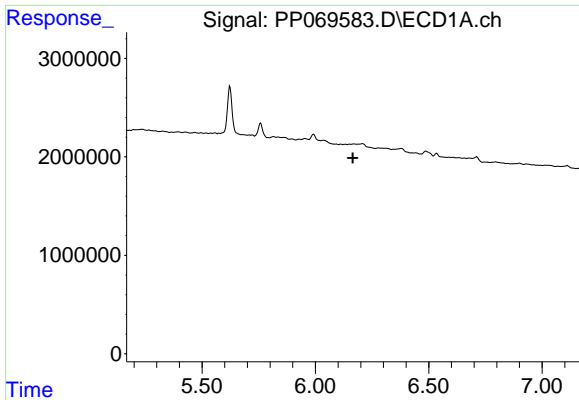
#22 AR-1248-2

R.T.: 5.992 min
 Delta R.T.: 0.029 min
 Response: 800241
 Conc: 18.85 ng/ml



#22 AR-1248-2

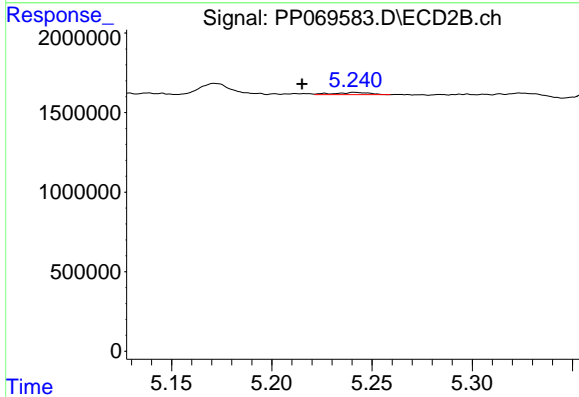
R.T.: 5.172 min
 Delta R.T.: 0.000 min
 Response: 778636
 Conc: 25.90 ng/ml



#23 AR-1248-3

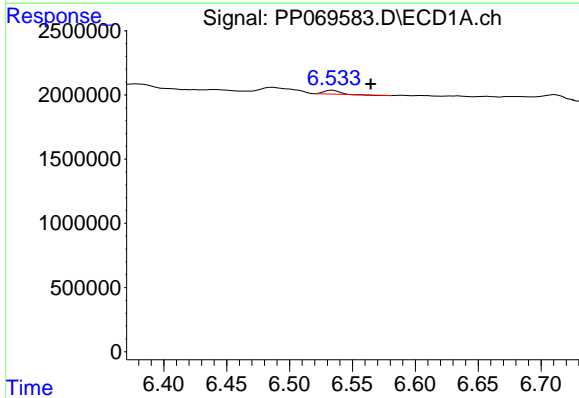
R.T.: 0.000 min
 Exp R.T.: 6.166 min
 Response: 0
 Conc: N.D.

Instrument : ECD_P
 ClientSampleId : I.BLK



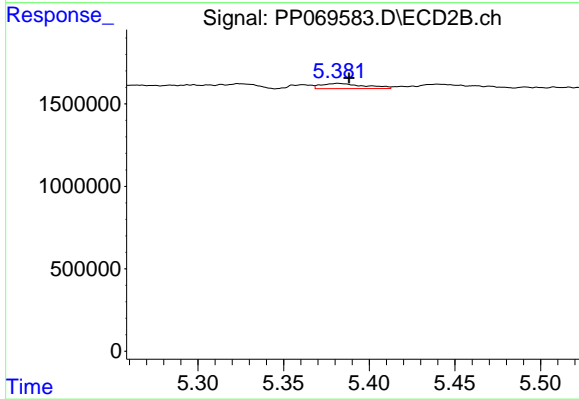
#23 AR-1248-3

R.T.: 5.241 min
 Delta R.T.: 0.026 min
 Response: 170250
 Conc: 5.49 ng/ml



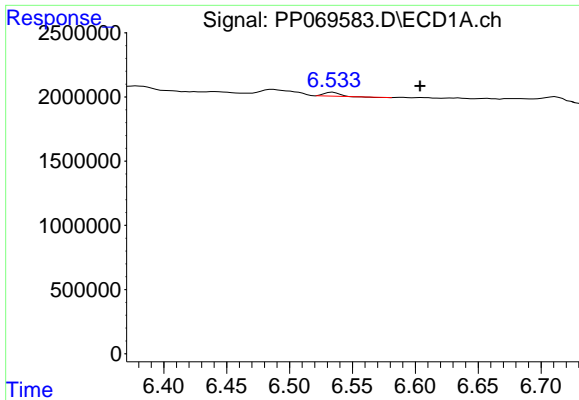
#24 AR-1248-4

R.T.: 6.534 min
 Delta R.T.: -0.030 min
 Response: 251380
 Conc: 4.56 ng/ml



#24 AR-1248-4

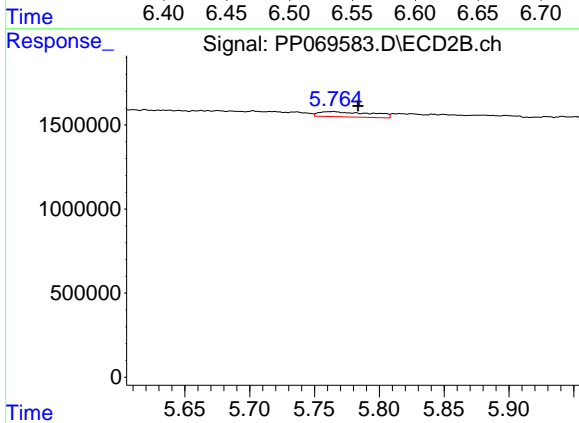
R.T.: 5.382 min
 Delta R.T.: -0.007 min
 Response: 547348
 Conc: 14.82 ng/ml



#25 AR-1248-5

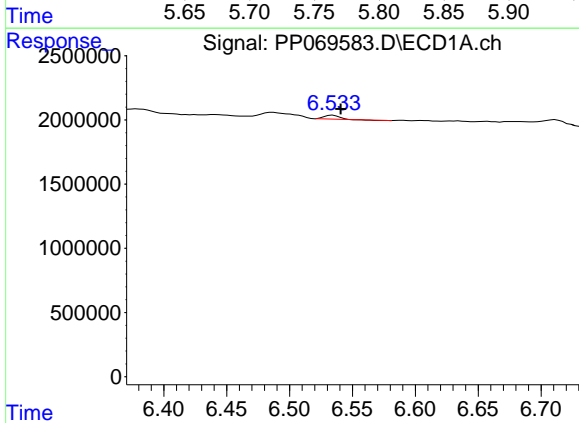
R.T.: 6.534 min
 Delta R.T.: -0.069 min
 Response: 251380
 Conc: 4.71 ng/ml

Instrument :
 ECD_P
 ClientSampleId :
 I.BLK



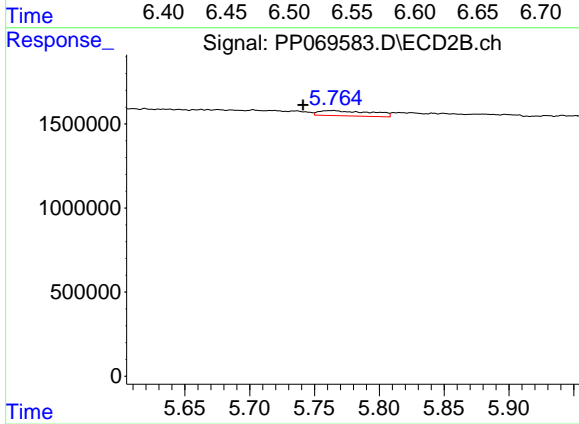
#25 AR-1248-5

R.T.: 5.765 min
 Delta R.T.: -0.019 min
 Response: 871788
 Conc: 23.32 ng/ml



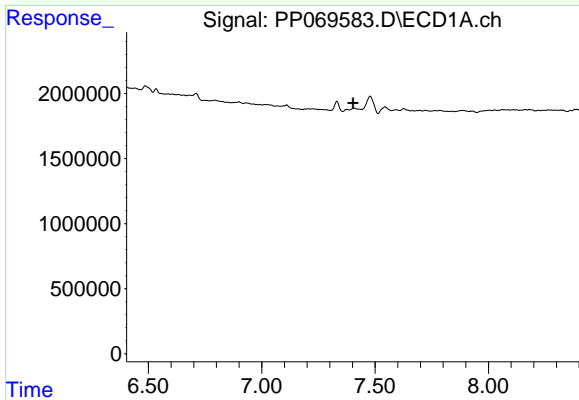
#26 AR-1254-1

R.T.: 6.534 min
 Delta R.T.: -0.006 min
 Response: 251380
 Conc: 4.34 ng/ml



#26 AR-1254-1

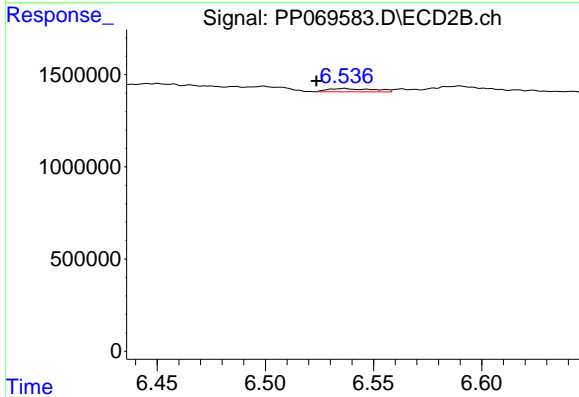
R.T.: 5.765 min
 Delta R.T.: 0.023 min
 Response: 871788
 Conc: 15.83 ng/ml



#29 AR-1254-4

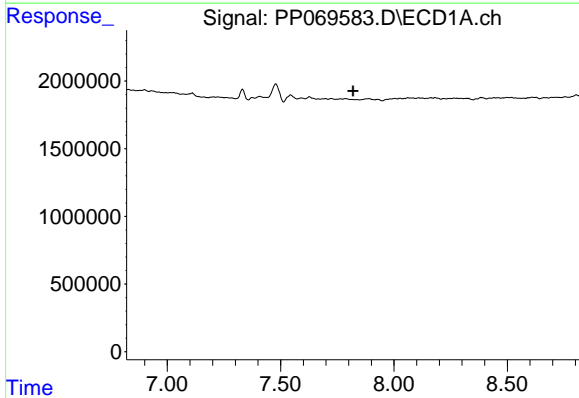
R.T.: 0.000 min
 Exp R.T.: 7.403 min
 Response: 0
 Conc: N.D.

Instrument :
 ECD_P
 ClientSampleId :
 I.BLK



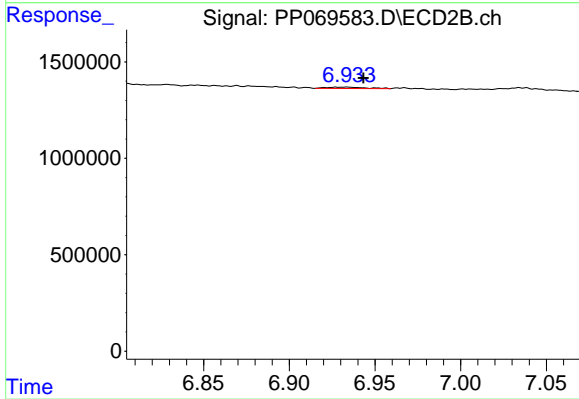
#29 AR-1254-4

R.T.: 6.536 min
 Delta R.T.: 0.013 min
 Response: 261904
 Conc: 5.11 ng/ml



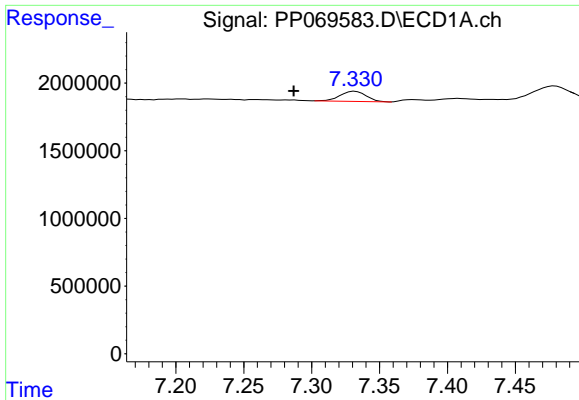
#30 AR-1254-5

R.T.: 0.000 min
 Exp R.T.: 7.820 min
 Response: 0
 Conc: N.D.



#30 AR-1254-5

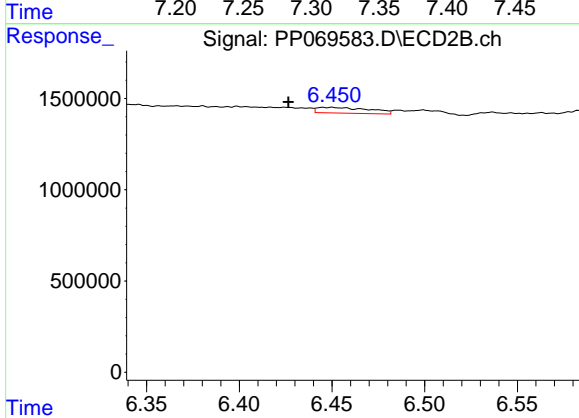
R.T.: 6.934 min
 Delta R.T.: -0.010 min
 Response: 112885
 Conc: 1.70 ng/ml



#31 AR-1260-1

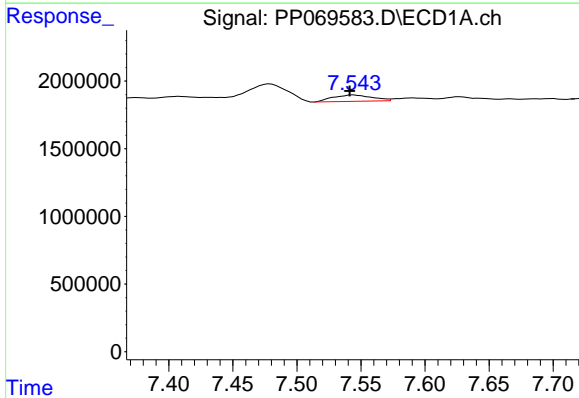
R.T.: 7.332 min
 Delta R.T.: 0.045 min
 Response: 988990
 Conc: 16.92 ng/ml

Instrument :
 ECD_P
 ClientSampleId :
 I.BLK



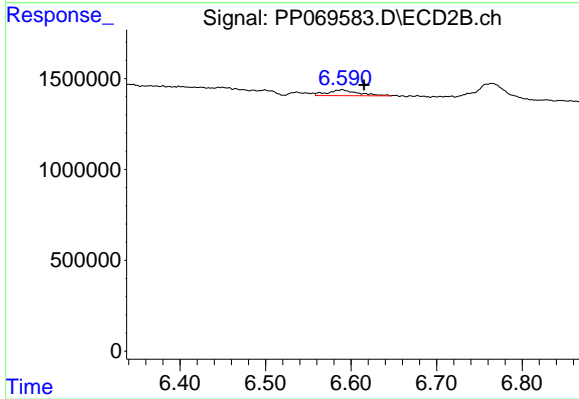
#31 AR-1260-1

R.T.: 6.450 min
 Delta R.T.: 0.024 min
 Response: 614662
 Conc: 12.74 ng/ml



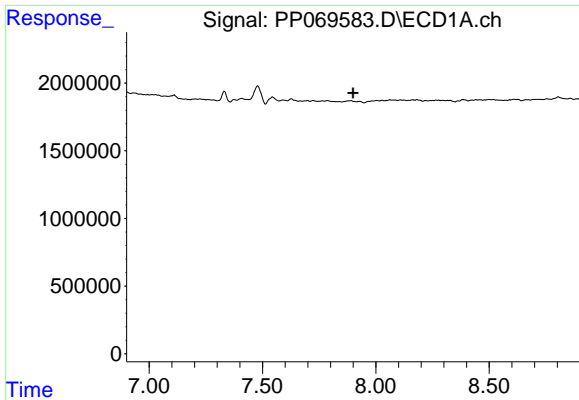
#32 AR-1260-2

R.T.: 7.544 min
 Delta R.T.: 0.003 min
 Response: 998784
 Conc: 12.84 ng/ml



#32 AR-1260-2

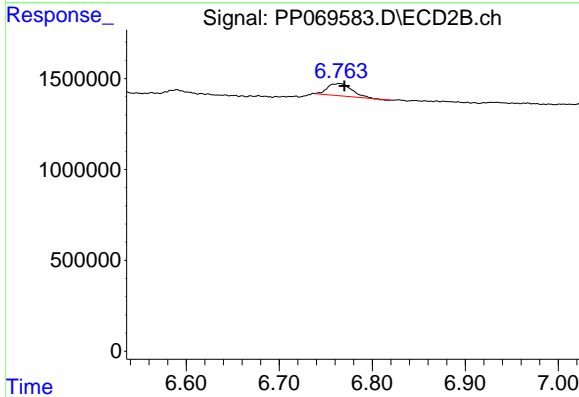
R.T.: 6.590 min
 Delta R.T.: -0.025 min
 Response: 778852
 Conc: 12.70 ng/ml



#33 AR-1260-3

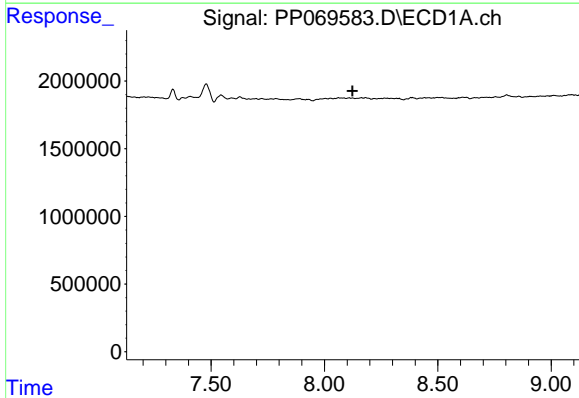
R.T.: 0.000 min
 Exp R.T.: 7.900 min
 Response: 0
 Conc: N.D.

Instrument :
 ECD_P
 ClientSampleId :
 I.BLK



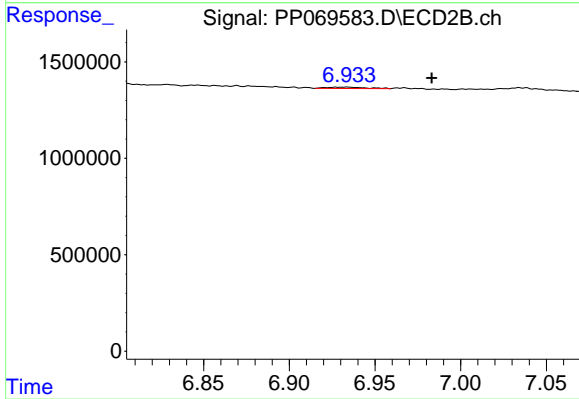
#33 AR-1260-3

R.T.: 6.765 min
 Delta R.T.: -0.005 min
 Response: 1189360
 Conc: 19.77 ng/ml



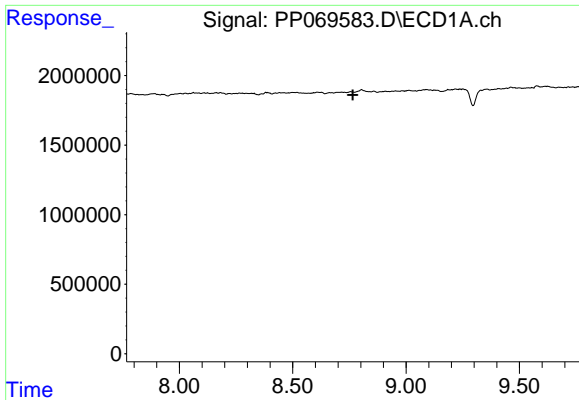
#36 AR-1262-1

R.T.: 0.000 min
 Exp R.T.: 8.124 min
 Response: 0
 Conc: N.D.



#36 AR-1262-1

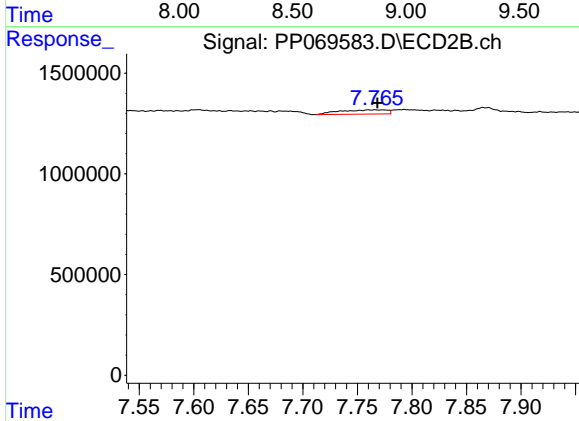
R.T.: 6.934 min
 Delta R.T.: -0.050 min
 Response: 112885
 Conc: 1.59 ng/ml



#38 AR-1262-3

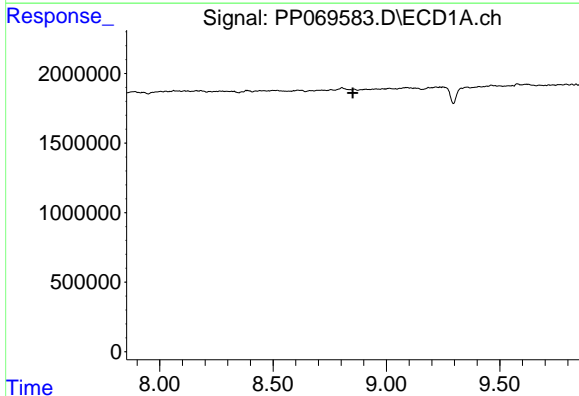
R.T.: 0.000 min
 Exp R.T.: 8.766 min
 Response: 0
 Conc: N.D.

Instrument :
 ECD_P
 ClientSampleId :
 I.BLK



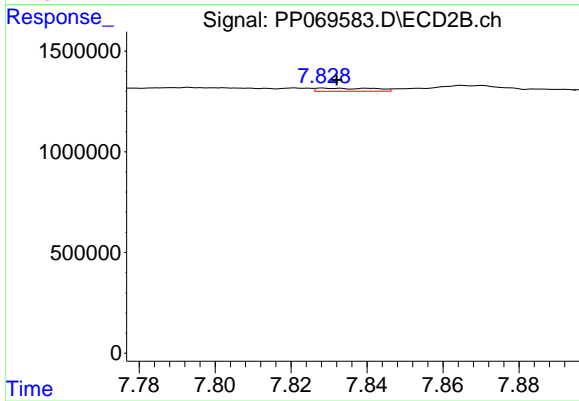
#38 AR-1262-3

R.T.: 7.766 min
 Delta R.T.: -0.002 min
 Response: 647742
 Conc: 12.39 ng/ml



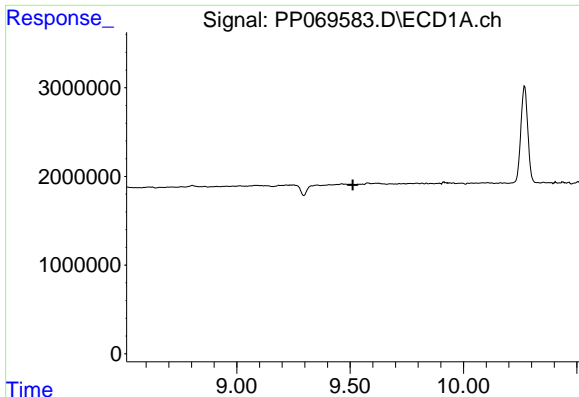
#39 AR-1262-4

R.T.: 0.000 min
 Exp R.T.: 8.852 min
 Response: 0
 Conc: N.D.



#39 AR-1262-4

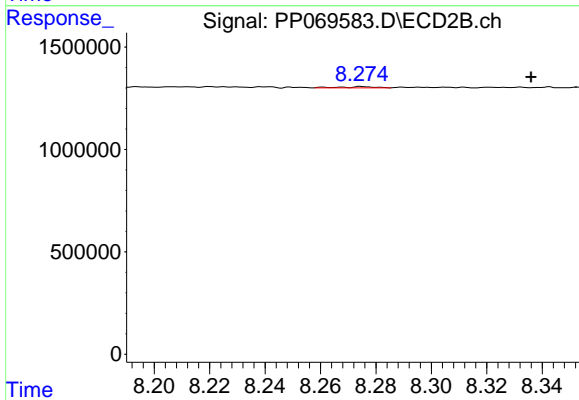
R.T.: 7.828 min
 Delta R.T.: -0.004 min
 Response: 162508
 Conc: 1.76 ng/ml



#40 AR-1262-5

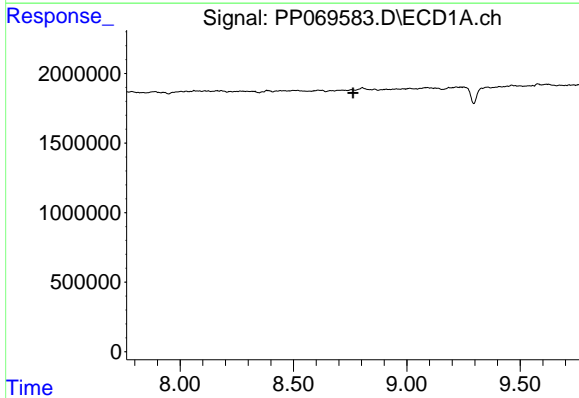
R.T.: 0.000 min
 Exp R.T.: 9.511 min
 Response: 0
 Conc: N.D.

Instrument :
 ECD_P
 ClientSampleId :
 I.BLK



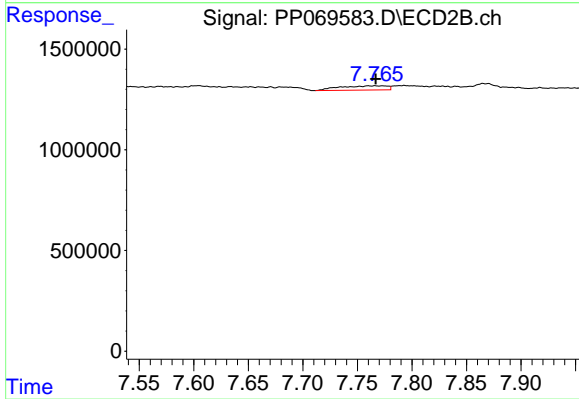
#40 AR-1262-5

R.T.: 8.275 min
 Delta R.T.: -0.061 min
 Response: 48391
 Conc: 1.01 ng/ml



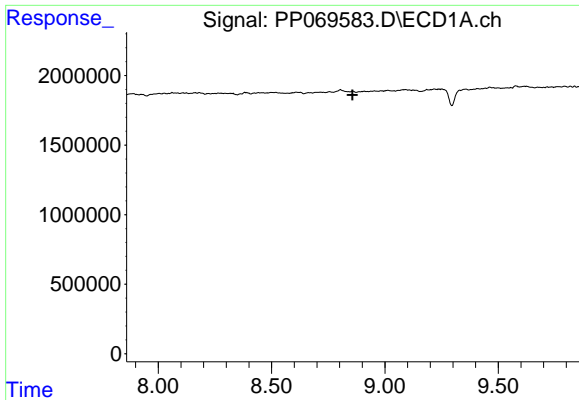
#41 AR-1268-1

R.T.: 0.000 min
 Exp R.T.: 8.763 min
 Response: 0
 Conc: N.D.



#41 AR-1268-1

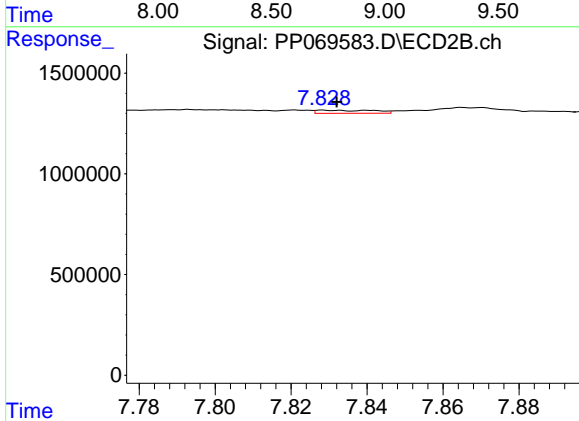
R.T.: 7.766 min
 Delta R.T.: 0.000 min
 Response: 647742
 Conc: 4.46 ng/ml



#42 AR-1268-2

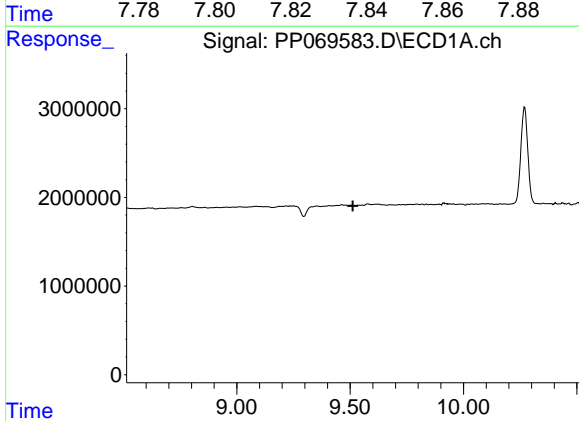
R.T.: 0.000 min
 Exp R.T.: 8.857 min
 Response: 0
 Conc: N.D.

Instrument : ECD_P
 ClientSampleId : I.BLK



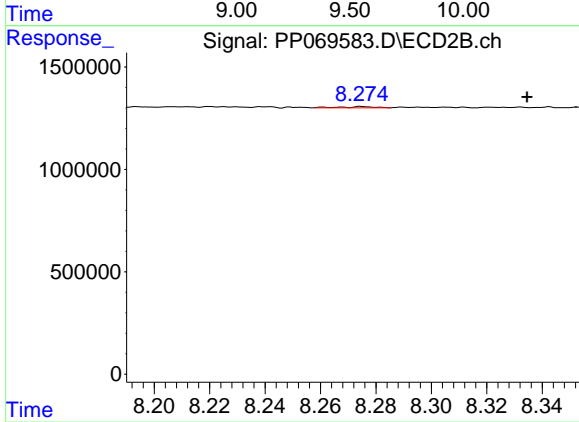
#42 AR-1268-2

R.T.: 7.828 min
 Delta R.T.: -0.004 min
 Response: 162508
 Conc: 1.22 ng/ml



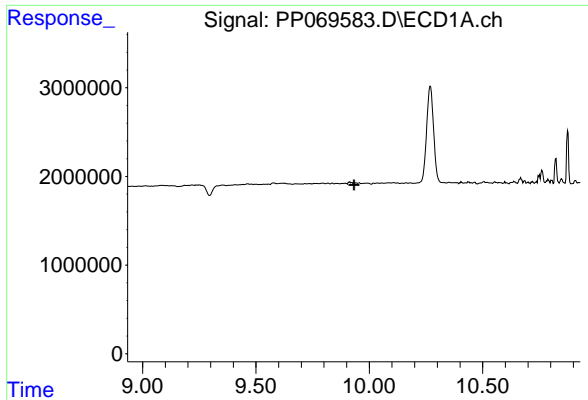
#44 AR-1268-4

R.T.: 0.000 min
 Exp R.T.: 9.511 min
 Response: 0
 Conc: N.D.



#44 AR-1268-4

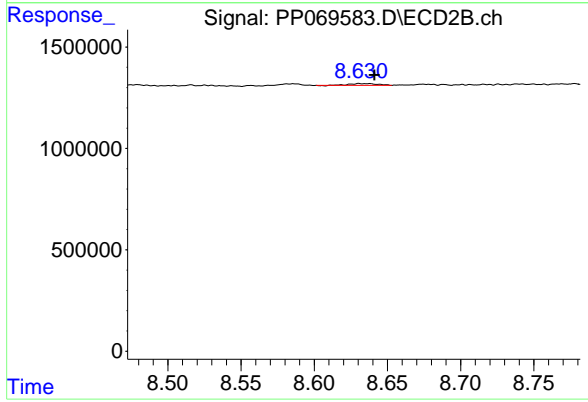
R.T.: 8.275 min
 Delta R.T.: -0.060 min
 Response: 48391
 Conc: 0.93 ng/ml



#45 AR-1268-5

R.T.: 0.000 min
 Exp R.T.: 9.933 min
 Response: 0
 Conc: N.D.

Instrument :
 ECD_P
 ClientSampleId :
 I.BLK



#45 AR-1268-5

R.T.: 8.631 min
 Delta R.T.: -0.010 min
 Response: 115040
 Conc: 0.32 ng/ml