

Data Path : Z:\pestpcbsrv\HPCHEM1\ECD_P\Data\PP020625\
 Data File : PP069588.D
 Signal(s) : Signal #1: ECD1A.ch Signal #2: ECD2B.ch
 Acq On : 06 Feb 2025 23:24
 Operator : YP\AJ
 Sample : PB166598BL
 Misc :
 ALS Vial : 31 Sample Multiplier: 1

Instrument :
 ECD_P
 ClientSampleId :
 PB166598BL

Integration File signal 1: autoint1.e
 Integration File signal 2: autoint2.e
 Quant Time: Feb 07 02:08:37 2025
 Quant Method : Z:\pestpcbsrv\HPCHEM1\ECD_P\methods\PP012825.M
 Quant Title : GC EXTRACTABLES
 QLast Update : Wed Jan 29 00:13:21 2025
 Response via : Initial Calibration
 Integrator: ChemStation

Volume Inj. : 2 µl
 Signal #1 Phase : ZB-MR2 Signal #2 Phase: ZB-MR2
 Signal #1 Info : 30Mx0.32mmx 0.50µ Signal #2 Info : 30M x 0.32mm x 0.25µm

Compound	RT#1	RT#2	Resp#1	Resp#2	ng/ml	ng/ml
System Monitoring Compounds						
1) SA Tetrachlo...	4.534	3.839	35590800	23027959	24.863	25.801
2) SA Decachlor...	10.268	8.904	26318978	27657440	24.082	24.728
Target Compounds						
5) L1 AR-1016-3	0.000	5.177f	0	37463	N.D.	1.505 #
6) L1 AR-1016-4	0.000	5.177	0	37463	N.D.	1.855 #
7) L1 AR-1016-5	0.000	5.383	0	18191	N.D.	0.678 #
8) L2 AR-1221-1	0.000	4.052	0	30267	N.D.	2.457 #
9) L2 AR-1221-2	4.837	4.142	652867	381325	47.681	39.379
10) L2 AR-1221-3	4.837f	4.208	652867	42087	15.565	1.443 #
11) L3 AR-1232-1	4.837f	4.208	652867	42087	19.609	1.793 #
13) L3 AR-1232-3	0.000	5.177f	0	37463	N.D.	2.893 #
14) L3 AR-1232-4	0.000	5.177f	0	37463	N.D.	3.379 #
15) L3 AR-1232-5	0.000	5.383	0	18191	N.D.	1.490 #
18) L4 AR-1242-3	0.000	5.177f	0	37463	N.D.	1.665 #
19) L4 AR-1242-4	0.000	5.177f	0	37463	N.D.	1.736 #
20) L4 AR-1242-5	0.000	5.765	0	123074	N.D.	4.278 #
22) L5 AR-1248-2	0.000	5.177	0	37463	N.D.	1.246 #
23) L5 AR-1248-3	0.000	5.177f	0	37463	N.D.	1.209 #
24) L5 AR-1248-4	0.000	5.383	0	18191	N.D.	0.492 #
25) L5 AR-1248-5	0.000	5.794	0	180681	N.D.	4.832 #
26) L6 AR-1254-1	0.000	5.765	0	123074	N.D.	2.235 #
27) L6 AR-1254-2	0.000	5.835f	0	72941	N.D.	1.508 #
29) L6 AR-1254-4	0.000	6.540	0	422219	N.D.	8.238 #
32) L7 AR-1260-2	7.544	6.625	1203989	207626	15.473	3.387 #
33) L7 AR-1260-3	0.000	6.766	0	1586214	N.D.	26.368 #
38) L8 AR-1262-3	8.803f	7.755	1064075	180238	10.012	3.446 #
39) L8 AR-1262-4	8.803f	7.869f	1064075	1083195	13.009	11.718
41) L9 AR-1268-1	8.803f	7.755	1064075	180238	6.026	1.242 #
42) L9 AR-1268-2	8.803f	7.869f	1064075	1083195	6.762	8.156
43) L9 AR-1268-3	9.066	0.000	1442923	0	10.790	N.D. #
45) L9 AR-1268-5	0.000	8.634	0	208873	N.D.	0.586 #

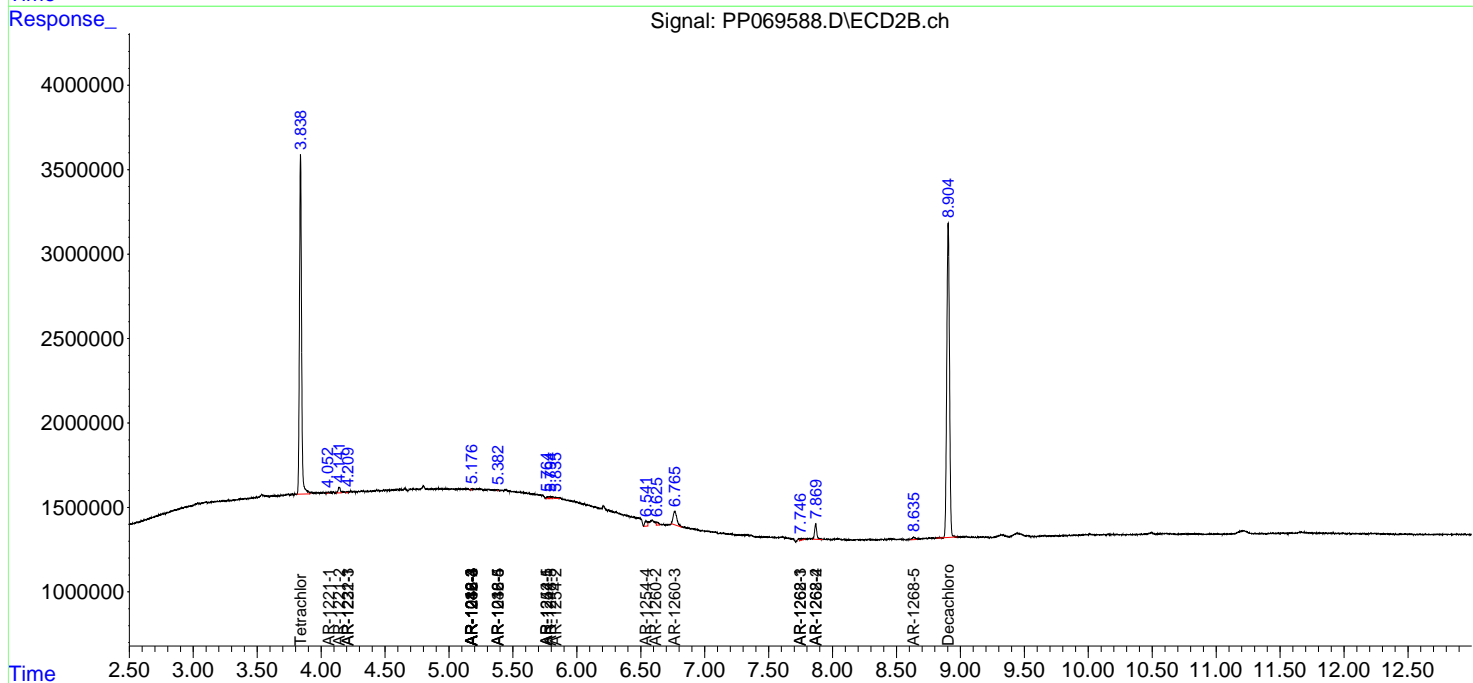
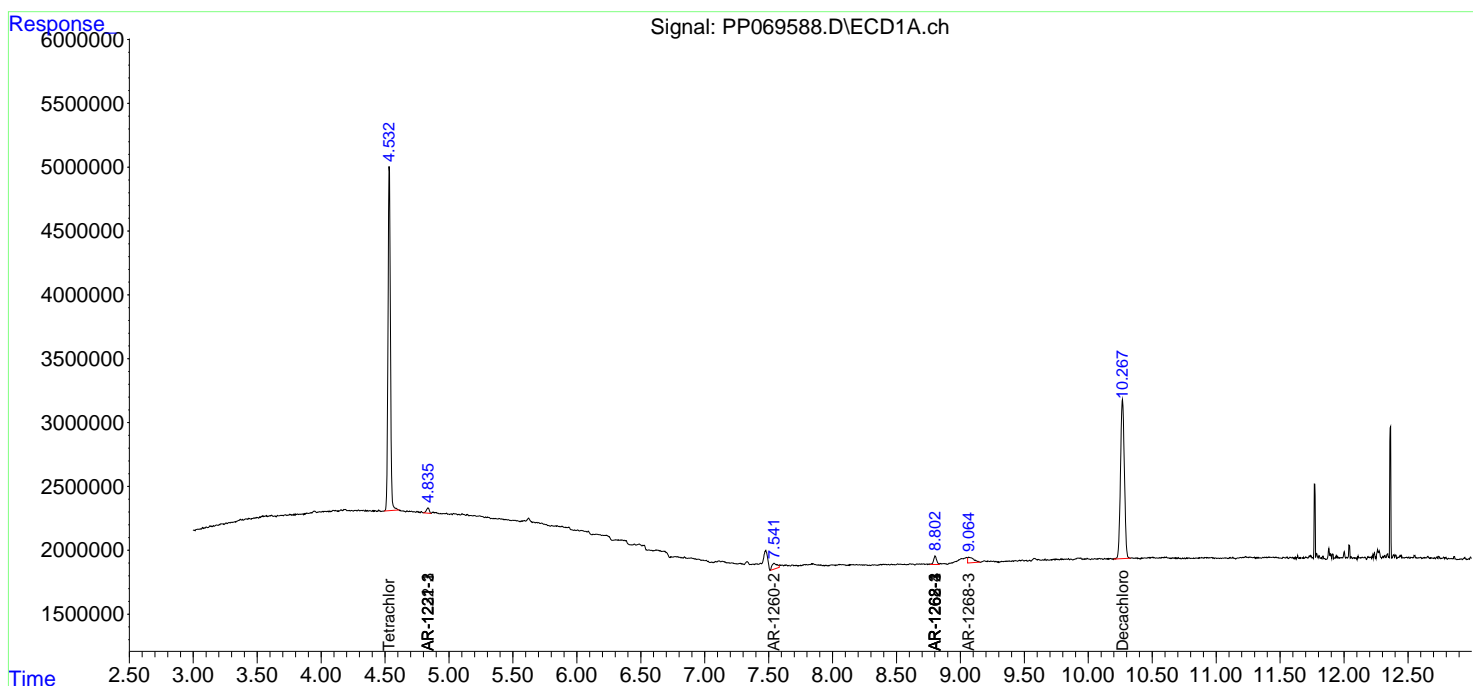
(f)=RT Delta > 1/2 Window (#)=Amounts differ by > 25% (m)=manual int.

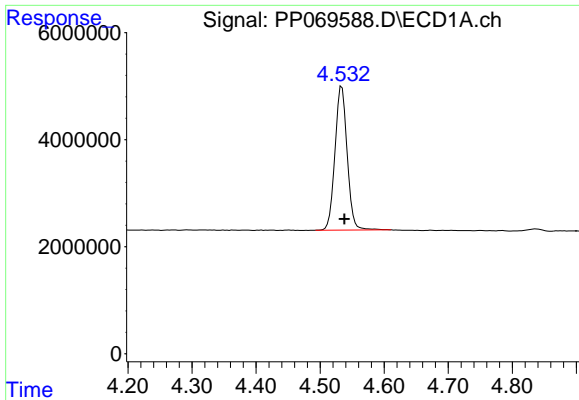
Data Path : Z:\pestpcbsrv\HPCHEM1\ECD_P\Data\PP020625\
 Data File : PP069588.D
 Signal(s) : Signal #1: ECD1A.ch Signal #2: ECD2B.ch
 Acq On : 06 Feb 2025 23:24
 Operator : YP\AJ
 Sample : PB166598BL
 Misc :
 ALS Vial : 31 Sample Multiplier: 1

Instrument :
 ECD_P
 ClientSampleId :
 PB166598BL

Integration File signal 1: autoint1.e
 Integration File signal 2: autoint2.e
 Quant Time: Feb 07 02:08:37 2025
 Quant Method : Z:\pestpcbsrv\HPCHEM1\ECD_P\methods\PP012825.M
 Quant Title : GC EXTRACTABLES
 QLast Update : Wed Jan 29 00:13:21 2025
 Response via : Initial Calibration
 Integrator: ChemStation

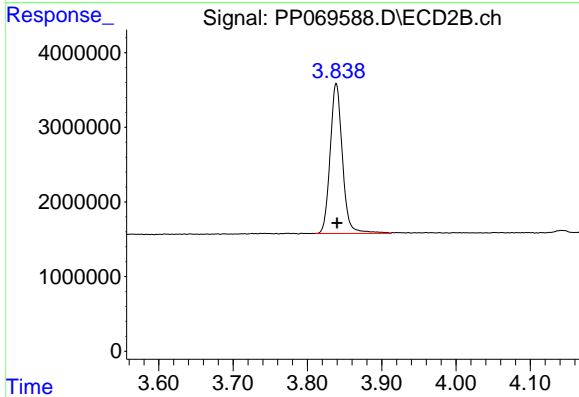
Volume Inj. : 2 µl
 Signal #1 Phase : ZB-MR1 Signal #2 Phase: ZB-MR2
 Signal #1 Info : 30Mx0.32mmx 0.50µ Signal #2 Info : 30M x 0.32mm x 0.25µm



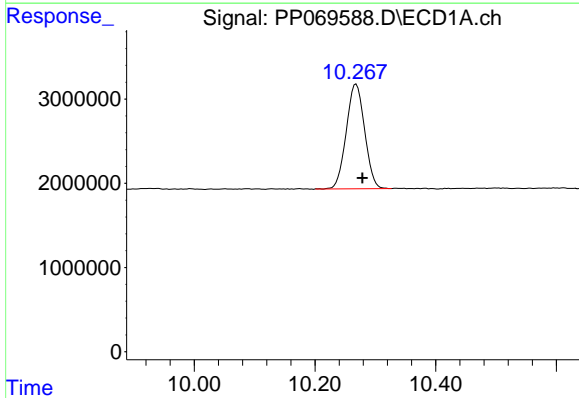


#1 Tetrachloro-m-xylene
 R.T.: 4.534 min
 Delta R.T.: -0.004 min
 Response: 35590800
 Conc: 24.86 ng/ml

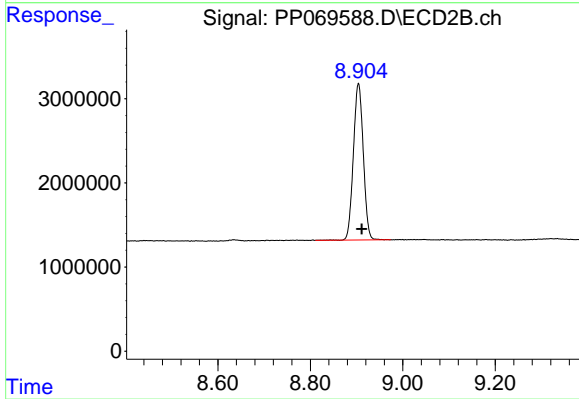
Instrument :
 ECD_P
 ClientSampleId :
 PB166598BL



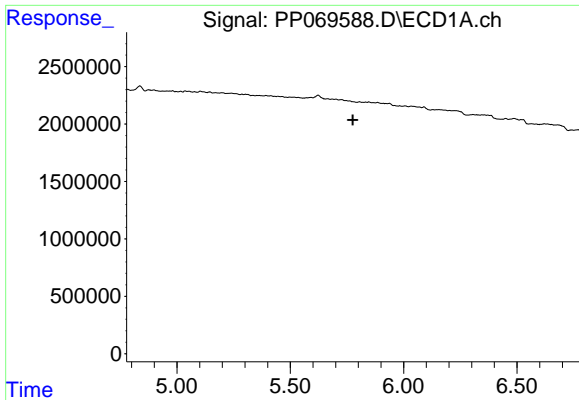
#1 Tetrachloro-m-xylene
 R.T.: 3.839 min
 Delta R.T.: -0.001 min
 Response: 23027959
 Conc: 25.80 ng/ml



#2 Decachlorobiphenyl
 R.T.: 10.268 min
 Delta R.T.: -0.010 min
 Response: 26318978
 Conc: 24.08 ng/ml



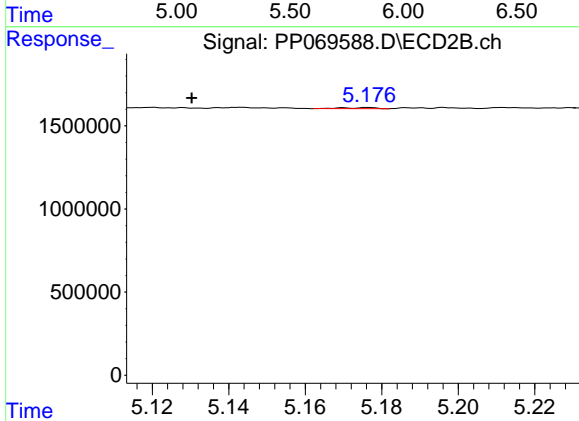
#2 Decachlorobiphenyl
 R.T.: 8.904 min
 Delta R.T.: -0.007 min
 Response: 27657440
 Conc: 24.73 ng/ml



#5 AR-1016-3

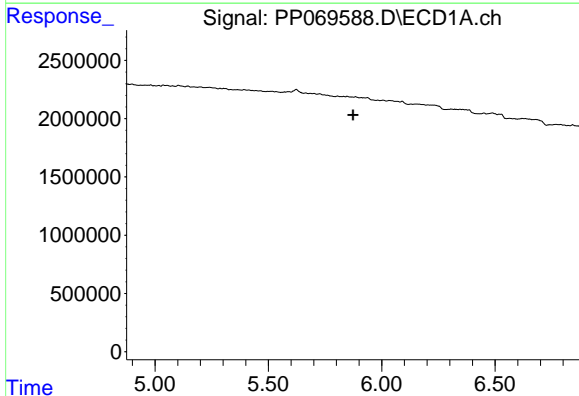
R.T.: 0.000 min
 Exp R.T.: 5.776 min
 Response: 0
 Conc: N.D.

Instrument :
 ECD_P
 ClientSampleId :
 PB166598BL



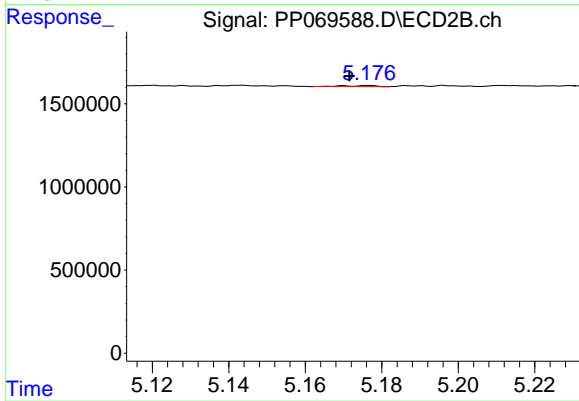
#5 AR-1016-3

R.T.: 5.177 min
 Delta R.T.: 0.046 min
 Response: 37463
 Conc: 1.51 ng/ml



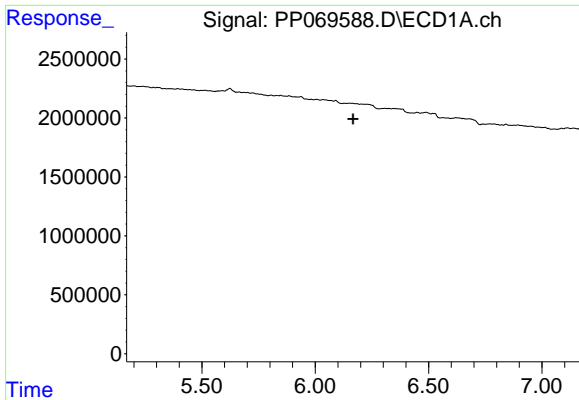
#6 AR-1016-4

R.T.: 0.000 min
 Exp R.T.: 5.874 min
 Response: 0
 Conc: N.D.



#6 AR-1016-4

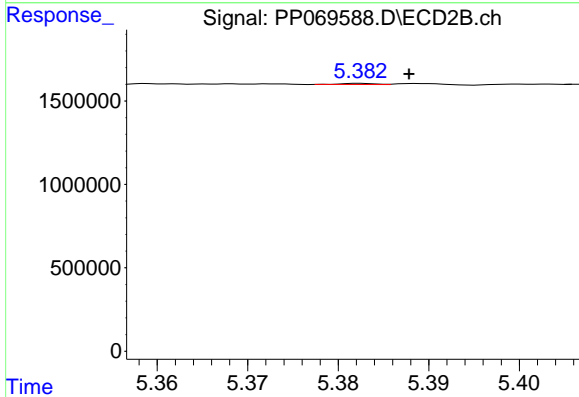
R.T.: 5.177 min
 Delta R.T.: 0.005 min
 Response: 37463
 Conc: 1.85 ng/ml



#7 AR-1016-5

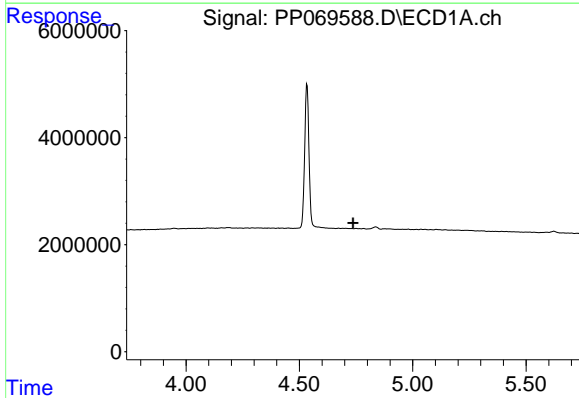
R.T.: 0.000 min
 Exp R.T.: 6.167 min
 Response: 0
 Conc: N.D.

Instrument :
 ECD_P
 ClientSampleId :
 PB166598BL



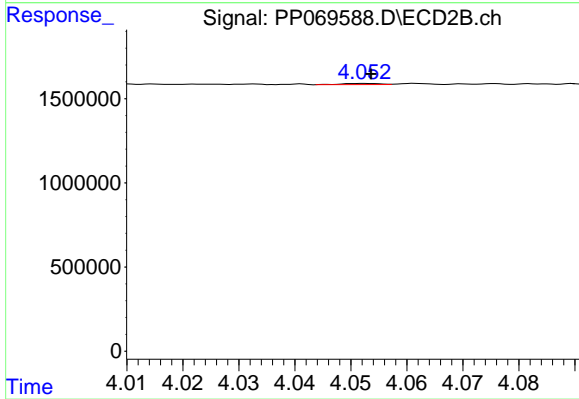
#7 AR-1016-5

R.T.: 5.383 min
 Delta R.T.: -0.005 min
 Response: 18191
 Conc: 0.68 ng/ml



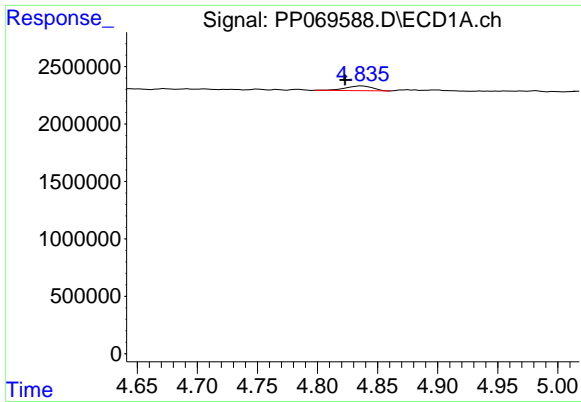
#8 AR-1221-1

R.T.: 0.000 min
 Exp R.T.: 4.737 min
 Response: 0
 Conc: N.D.



#8 AR-1221-1

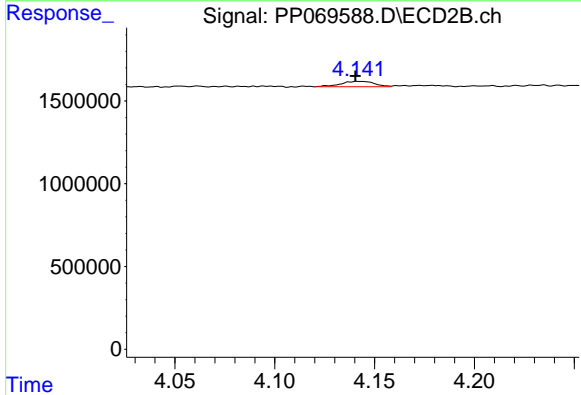
R.T.: 4.052 min
 Delta R.T.: -0.001 min
 Response: 30267
 Conc: 2.46 ng/ml



#9 AR-1221-2

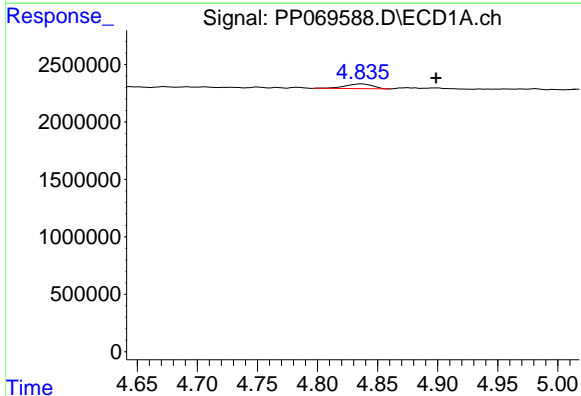
R.T.: 4.837 min
 Delta R.T.: 0.014 min
 Response: 652867
 Conc: 47.68 ng/ml

Instrument :
 ECD_P
 ClientSampleId :
 PB166598BL



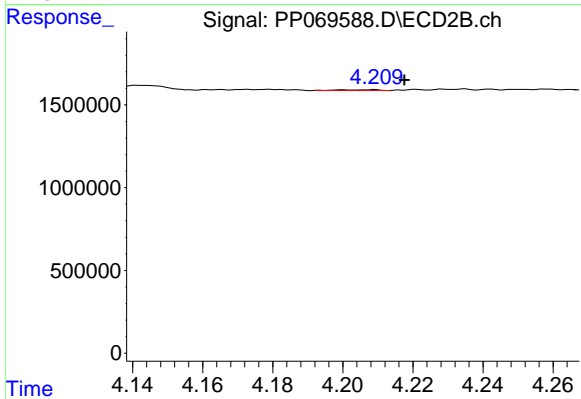
#9 AR-1221-2

R.T.: 4.142 min
 Delta R.T.: 0.002 min
 Response: 381325
 Conc: 39.38 ng/ml



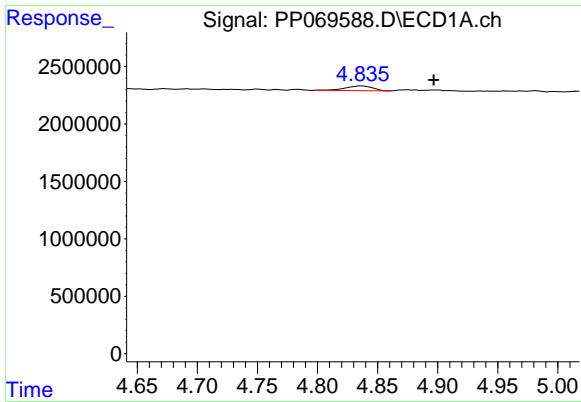
#10 AR-1221-3

R.T.: 4.837 min
 Delta R.T.: -0.061 min
 Response: 652867
 Conc: 15.57 ng/ml



#10 AR-1221-3

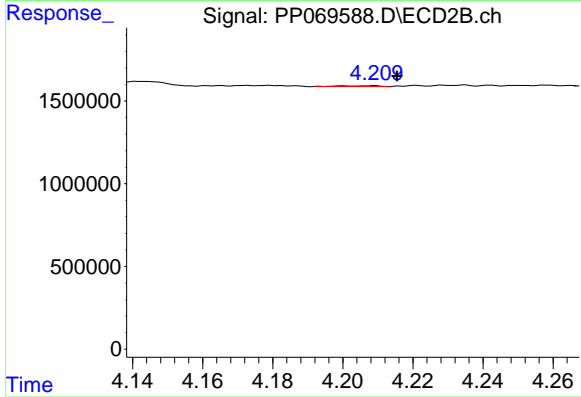
R.T.: 4.208 min
 Delta R.T.: -0.009 min
 Response: 42087
 Conc: 1.44 ng/ml



#11 AR-1232-1

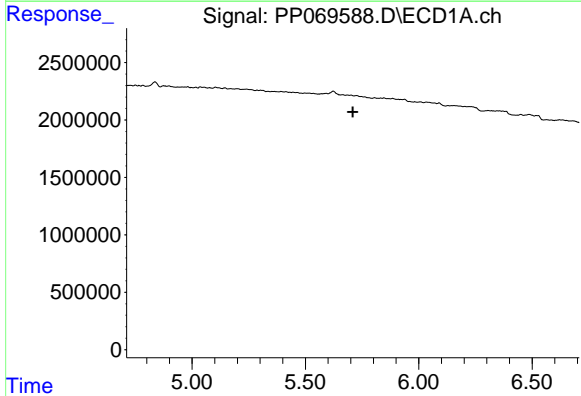
R.T.: 4.837 min
 Delta R.T.: -0.060 min
 Response: 652867
 Conc: 19.61 ng/ml

Instrument :
 ECD_P
 ClientSampleId :
 PB166598BL



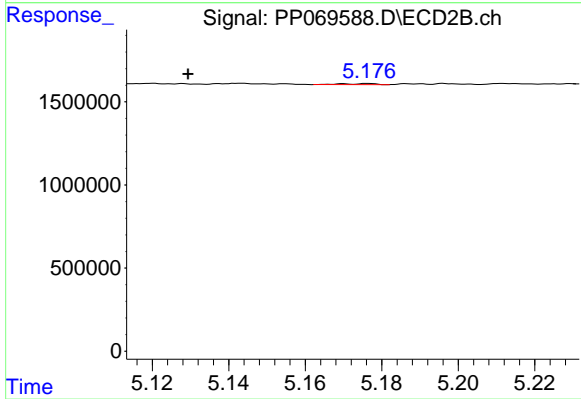
#11 AR-1232-1

R.T.: 4.208 min
 Delta R.T.: -0.007 min
 Response: 42087
 Conc: 1.79 ng/ml



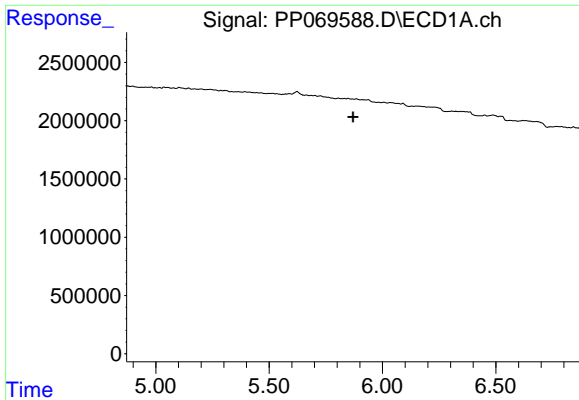
#13 AR-1232-3

R.T.: 0.000 min
 Exp R.T. : 5.710 min
 Response: 0
 Conc: N.D.



#13 AR-1232-3

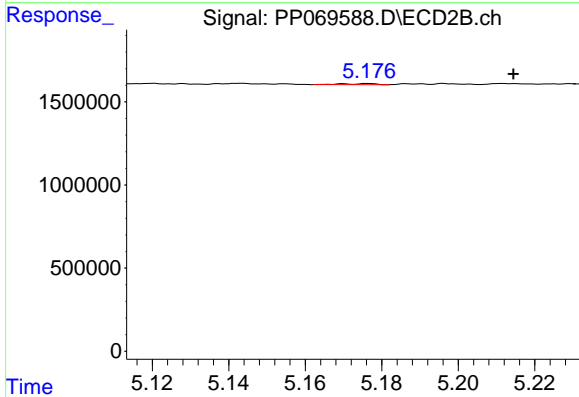
R.T.: 5.177 min
 Delta R.T.: 0.047 min
 Response: 37463
 Conc: 2.89 ng/ml



#14 AR-1232-4

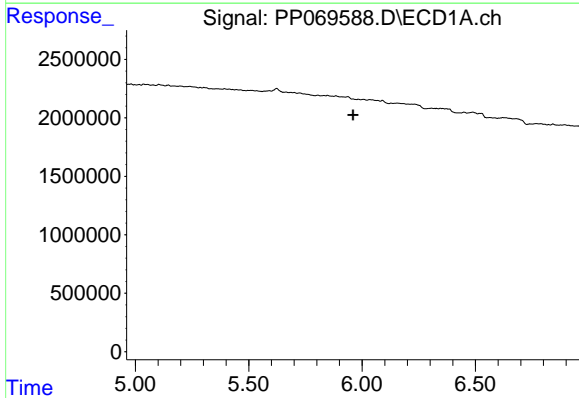
R.T.: 0.000 min
 Exp R.T.: 5.870 min
 Response: 0
 Conc: N.D.

Instrument :
 ECD_P
 ClientSampleId :
 PB166598BL



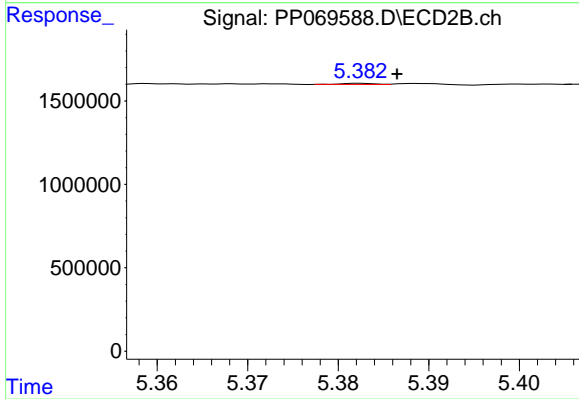
#14 AR-1232-4

R.T.: 5.177 min
 Delta R.T.: -0.038 min
 Response: 37463
 Conc: 3.38 ng/ml



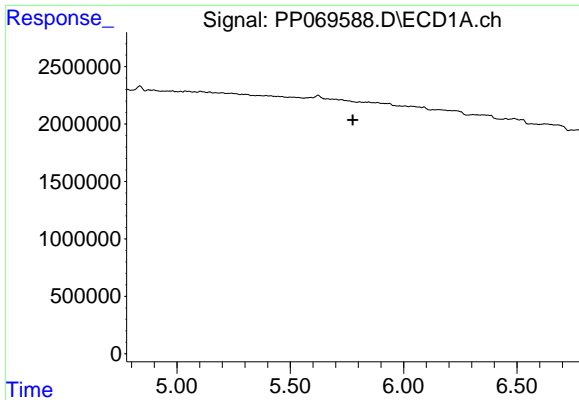
#15 AR-1232-5

R.T.: 0.000 min
 Exp R.T.: 5.960 min
 Response: 0
 Conc: N.D.



#15 AR-1232-5

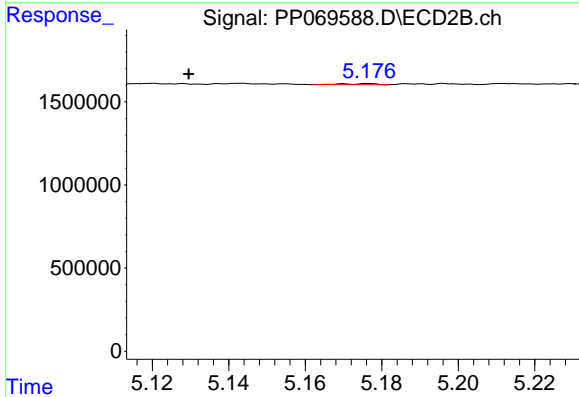
R.T.: 5.383 min
 Delta R.T.: -0.004 min
 Response: 18191
 Conc: 1.49 ng/ml



#18 AR-1242-3

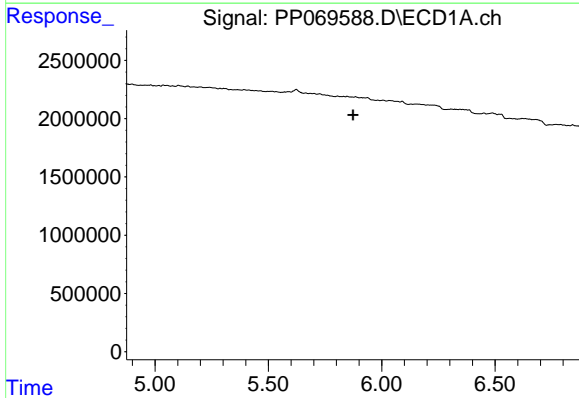
R.T.: 0.000 min
 Exp R.T.: 5.776 min
 Response: 0
 Conc: N.D.

Instrument :
 ECD_P
 ClientSampleId :
 PB166598BL



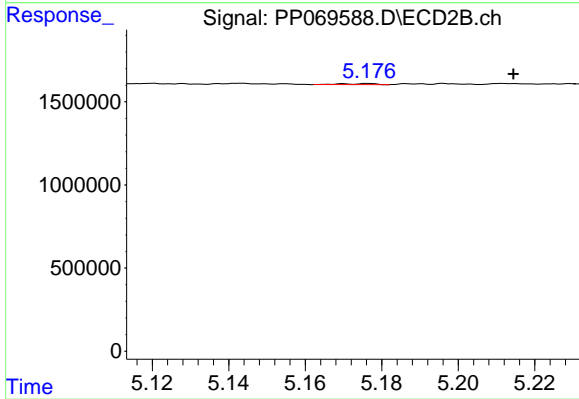
#18 AR-1242-3

R.T.: 5.177 min
 Delta R.T.: 0.047 min
 Response: 37463
 Conc: 1.66 ng/ml



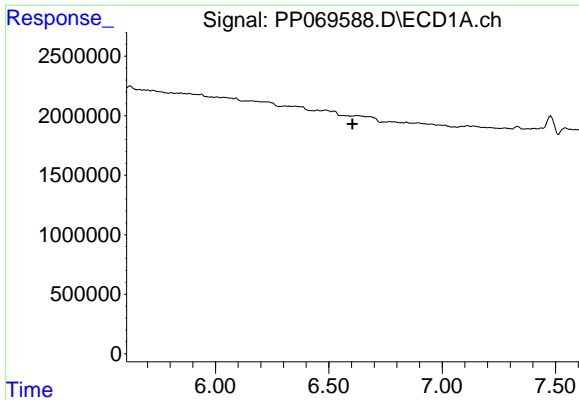
#19 AR-1242-4

R.T.: 0.000 min
 Exp R.T.: 5.874 min
 Response: 0
 Conc: N.D.



#19 AR-1242-4

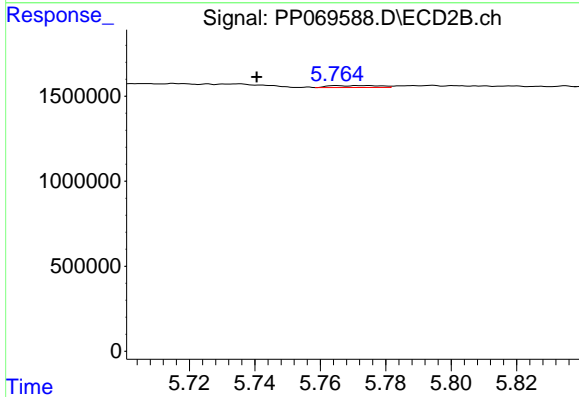
R.T.: 5.177 min
 Delta R.T.: -0.038 min
 Response: 37463
 Conc: 1.74 ng/ml



#20 AR-1242-5

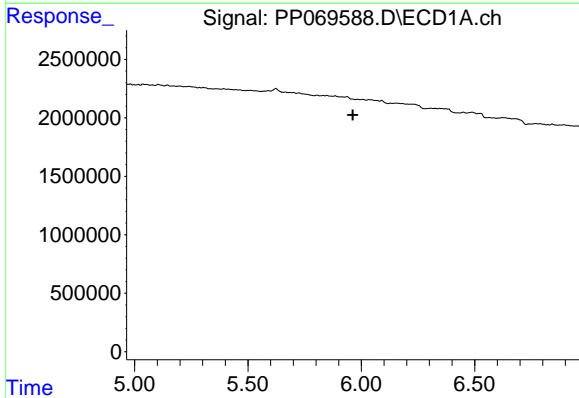
R.T.: 0.000 min
 Exp R.T. : 6.605 min
 Response: 0
 Conc: N.D.

Instrument :
 ECD_P
 ClientSampleId :
 PB166598BL



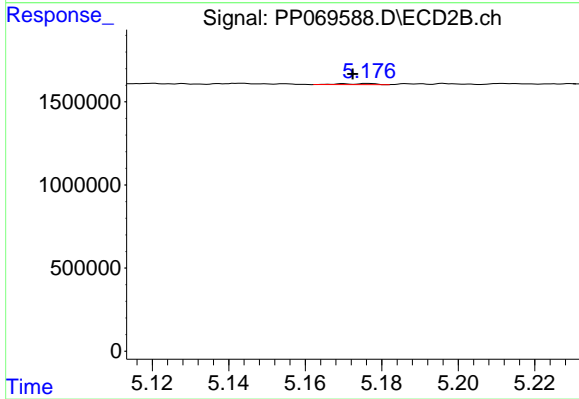
#20 AR-1242-5

R.T.: 5.765 min
 Delta R.T.: 0.025 min
 Response: 123074
 Conc: 4.28 ng/ml



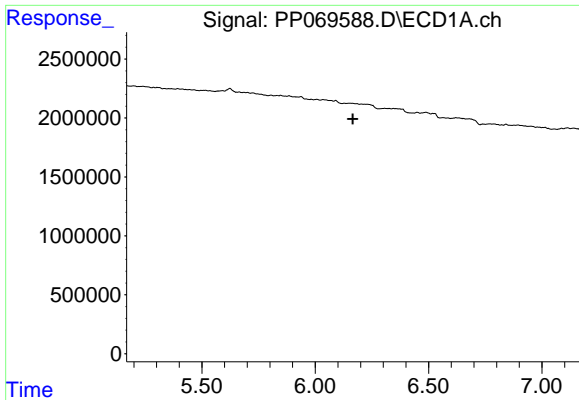
#22 AR-1248-2

R.T.: 0.000 min
 Exp R.T. : 5.963 min
 Response: 0
 Conc: N.D.



#22 AR-1248-2

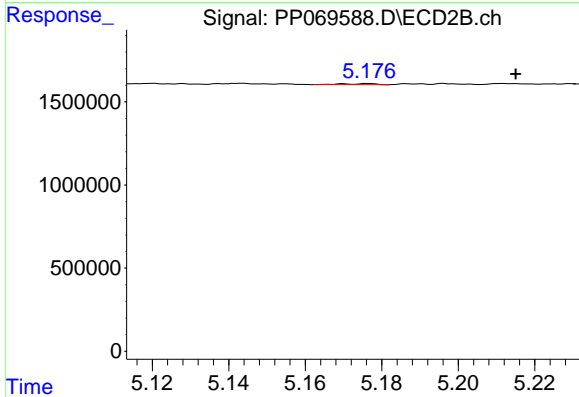
R.T.: 5.177 min
 Delta R.T.: 0.004 min
 Response: 37463
 Conc: 1.25 ng/ml



#23 AR-1248-3

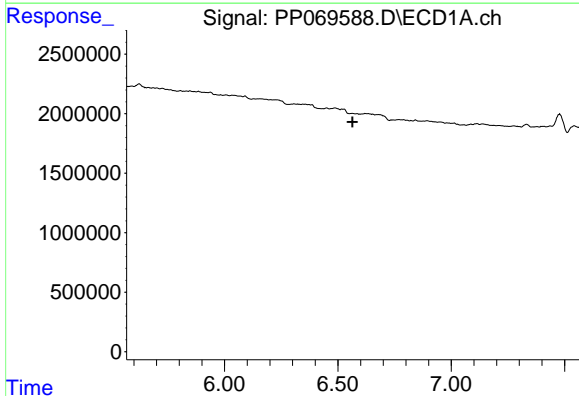
R.T.: 0.000 min
 Exp R.T.: 6.166 min
 Response: 0
 Conc: N.D.

Instrument :
 ECD_P
 ClientSampleId :
 PB166598BL



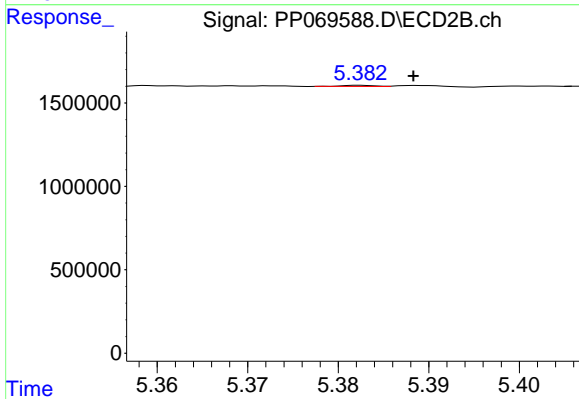
#23 AR-1248-3

R.T.: 5.177 min
 Delta R.T.: -0.038 min
 Response: 37463
 Conc: 1.21 ng/ml



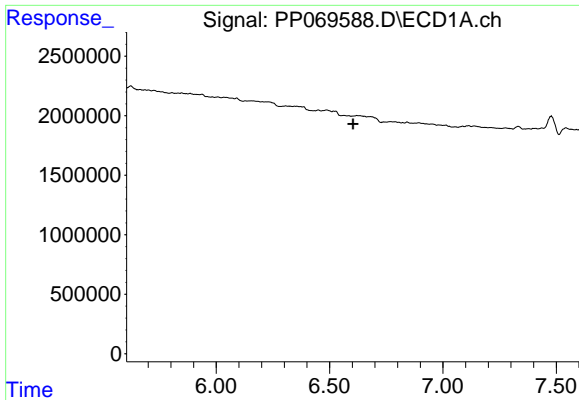
#24 AR-1248-4

R.T.: 0.000 min
 Exp R.T.: 6.565 min
 Response: 0
 Conc: N.D.



#24 AR-1248-4

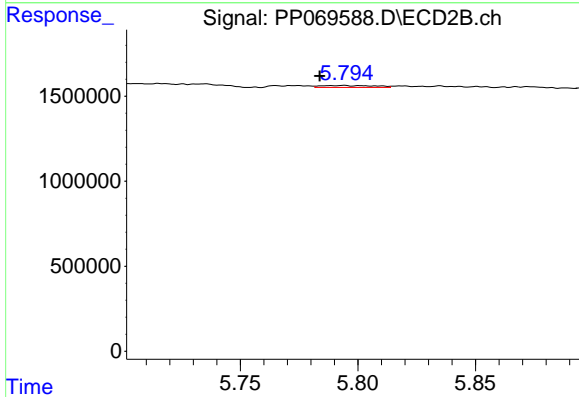
R.T.: 5.383 min
 Delta R.T.: -0.006 min
 Response: 18191
 Conc: 0.49 ng/ml



#25 AR-1248-5

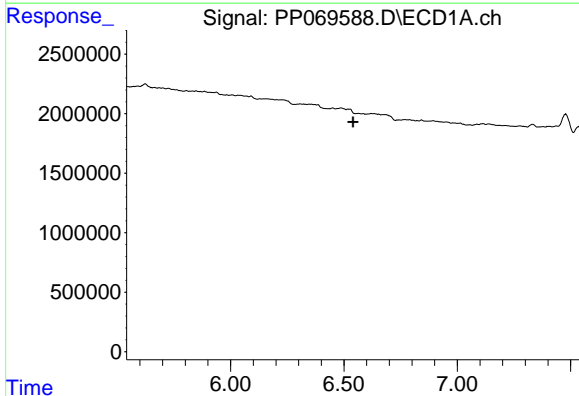
R.T.: 0.000 min
 Exp R.T.: 6.604 min
 Response: 0
 Conc: N.D.

Instrument :
 ECD_P
 ClientSampleId :
 PB166598BL



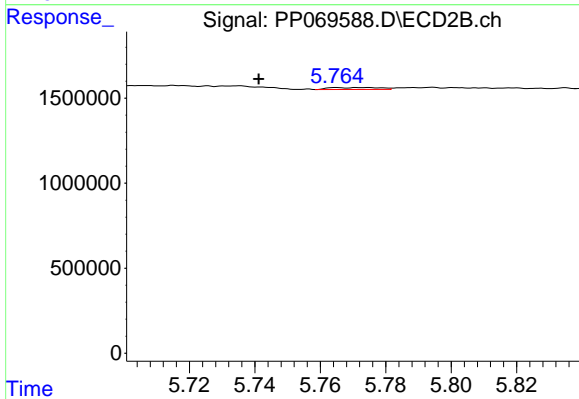
#25 AR-1248-5

R.T.: 5.794 min
 Delta R.T.: 0.010 min
 Response: 180681
 Conc: 4.83 ng/ml



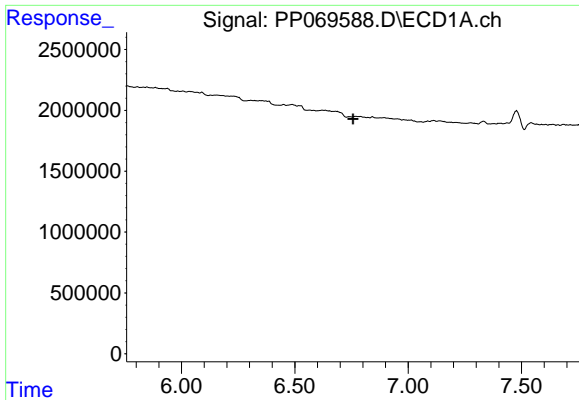
#26 AR-1254-1

R.T.: 0.000 min
 Exp R.T.: 6.541 min
 Response: 0
 Conc: N.D.



#26 AR-1254-1

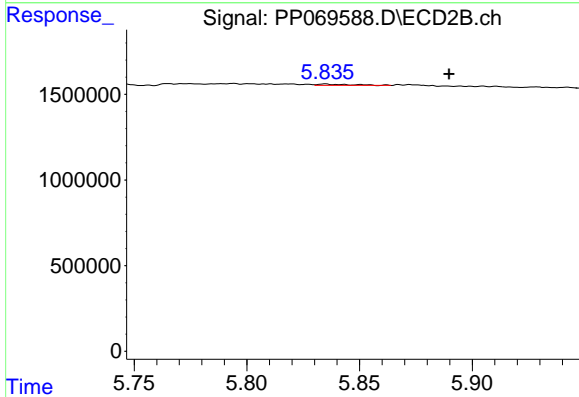
R.T.: 5.765 min
 Delta R.T.: 0.024 min
 Response: 123074
 Conc: 2.24 ng/ml



#27 AR-1254-2

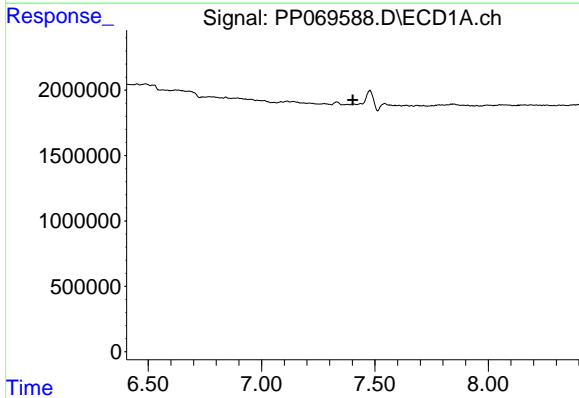
R.T.: 0.000 min
 Exp R.T.: 6.757 min
 Response: 0
 Conc: N.D.

Instrument :
 ECD_P
 ClientSampleId :
 PB166598BL



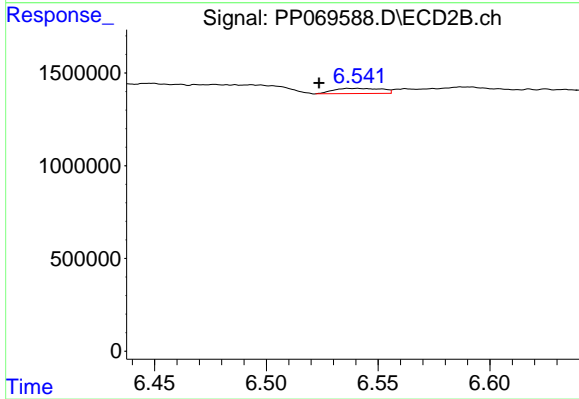
#27 AR-1254-2

R.T.: 5.835 min
 Delta R.T.: -0.055 min
 Response: 72941
 Conc: 1.51 ng/ml



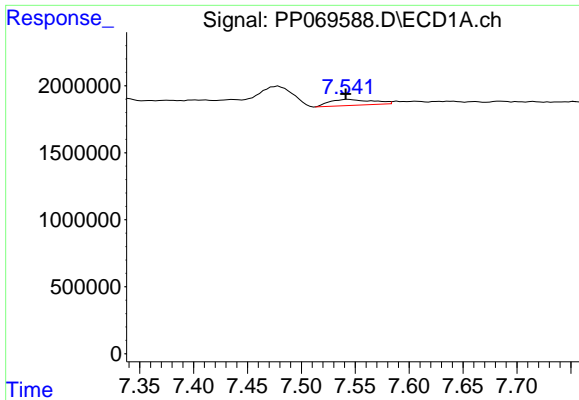
#29 AR-1254-4

R.T.: 0.000 min
 Exp R.T.: 7.403 min
 Response: 0
 Conc: N.D.



#29 AR-1254-4

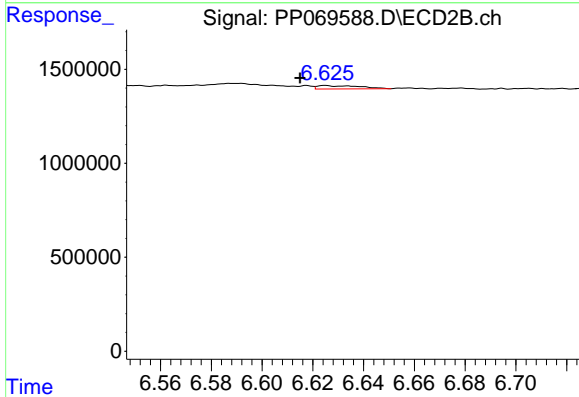
R.T.: 6.540 min
 Delta R.T.: 0.017 min
 Response: 422219
 Conc: 8.24 ng/ml



#32 AR-1260-2

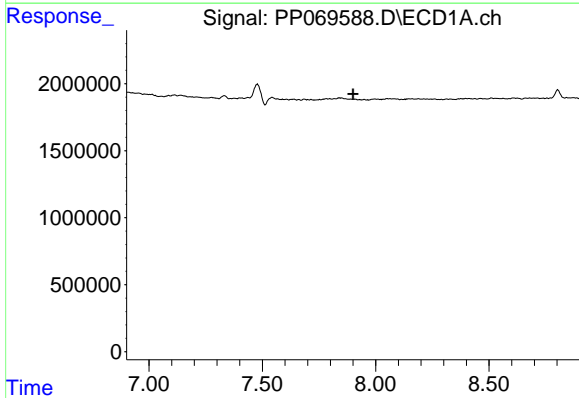
R.T.: 7.544 min
 Delta R.T.: 0.002 min
 Response: 1203989
 Conc: 15.47 ng/ml

Instrument :
 ECD_P
 ClientSampleId :
 PB166598BL



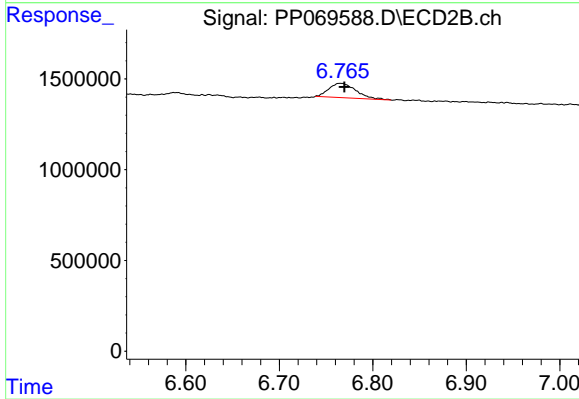
#32 AR-1260-2

R.T.: 6.625 min
 Delta R.T.: 0.010 min
 Response: 207626
 Conc: 3.39 ng/ml



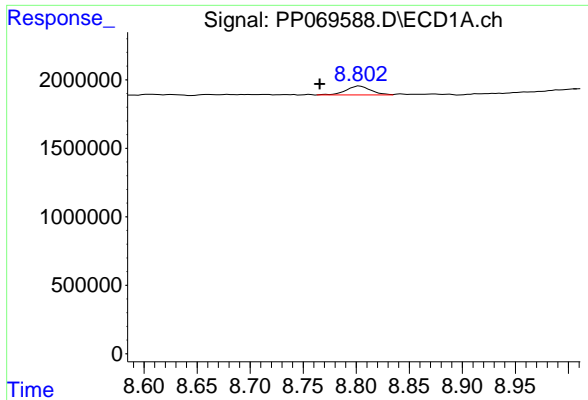
#33 AR-1260-3

R.T.: 0.000 min
 Exp R.T. : 7.900 min
 Response: 0
 Conc: N.D.



#33 AR-1260-3

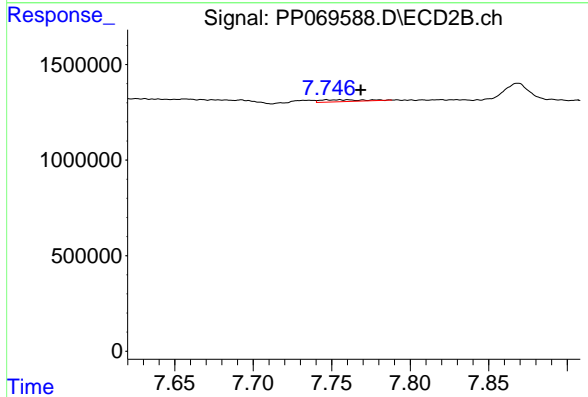
R.T.: 6.766 min
 Delta R.T.: -0.004 min
 Response: 1586214
 Conc: 26.37 ng/ml



#38 AR-1262-3

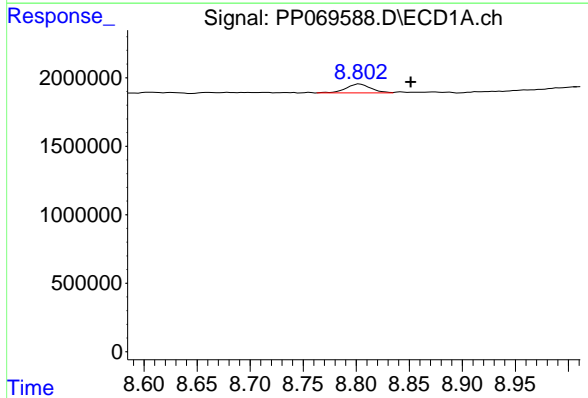
R.T.: 8.803 min
 Delta R.T.: 0.038 min
 Response: 1064075
 Conc: 10.01 ng/ml

Instrument :
 ECD_P
 ClientSampleId :
 PB166598BL



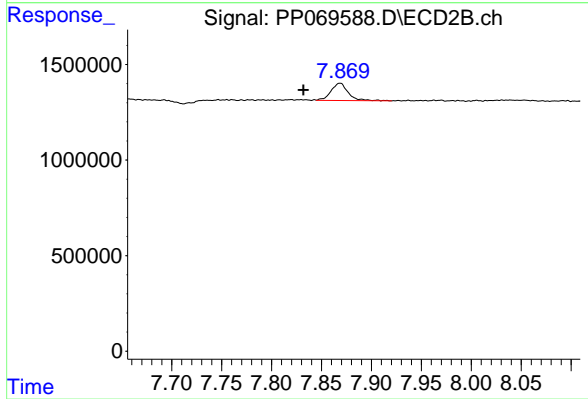
#38 AR-1262-3

R.T.: 7.755 min
 Delta R.T.: -0.014 min
 Response: 180238
 Conc: 3.45 ng/ml



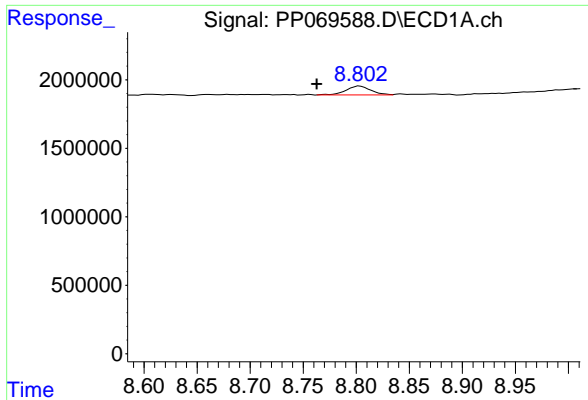
#39 AR-1262-4

R.T.: 8.803 min
 Delta R.T.: -0.048 min
 Response: 1064075
 Conc: 13.01 ng/ml



#39 AR-1262-4

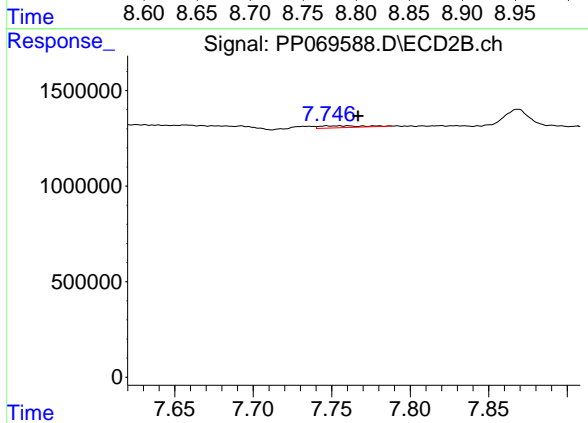
R.T.: 7.869 min
 Delta R.T.: 0.037 min
 Response: 1083195
 Conc: 11.72 ng/ml



#41 AR-1268-1

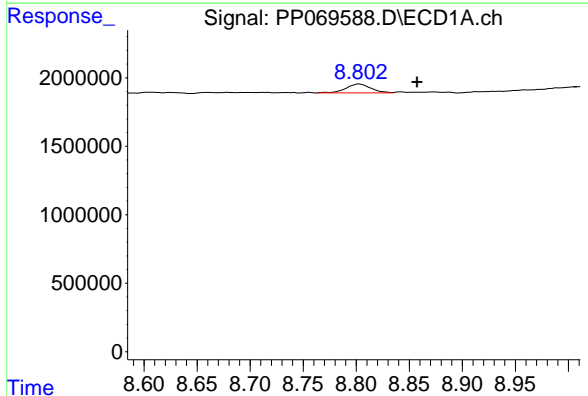
R.T.: 8.803 min
 Delta R.T.: 0.040 min
 Response: 1064075
 Conc: 6.03 ng/ml

Instrument : ECD_P
 ClientSampleId : PB166598BL



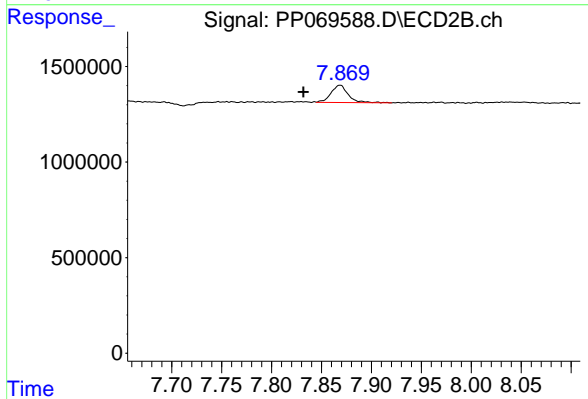
#41 AR-1268-1

R.T.: 7.755 min
 Delta R.T.: -0.012 min
 Response: 180238
 Conc: 1.24 ng/ml



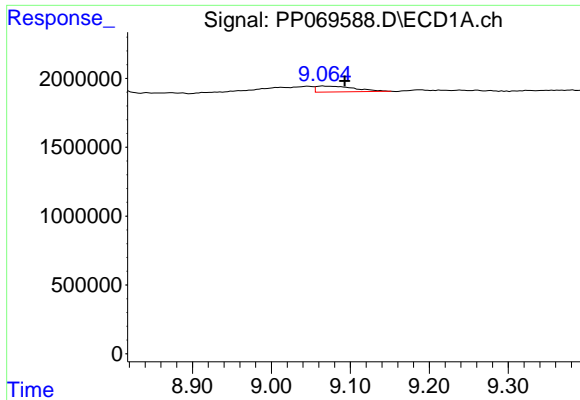
#42 AR-1268-2

R.T.: 8.803 min
 Delta R.T.: -0.054 min
 Response: 1064075
 Conc: 6.76 ng/ml



#42 AR-1268-2

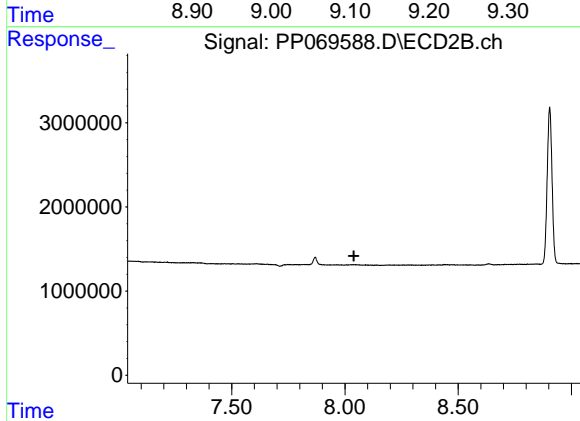
R.T.: 7.869 min
 Delta R.T.: 0.037 min
 Response: 1083195
 Conc: 8.16 ng/ml



#43 AR-1268-3

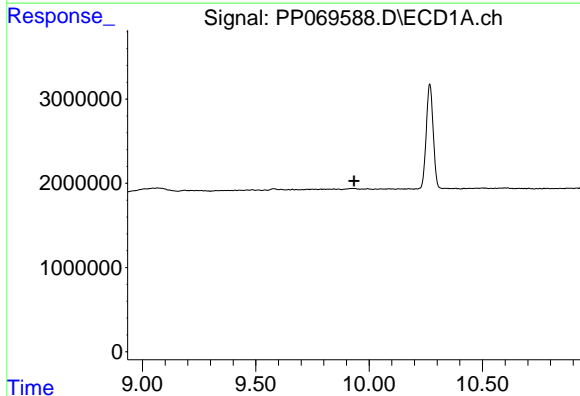
R.T.: 9.066 min
 Delta R.T.: -0.027 min
 Response: 1442923
 Conc: 10.79 ng/ml

Instrument :
 ECD_P
 ClientSampleId :
 PB166598BL



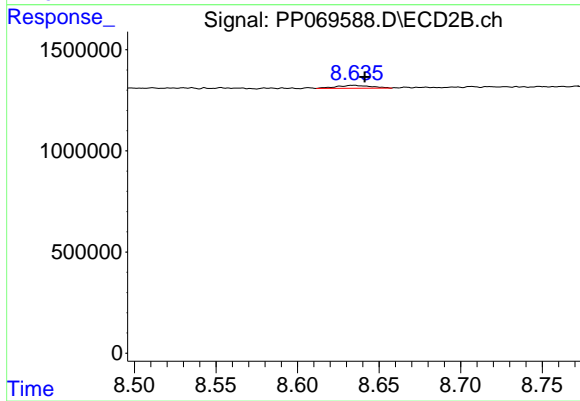
#43 AR-1268-3

R.T.: 0.000 min
 Exp R.T. : 8.039 min
 Response: 0
 Conc: N.D.



#45 AR-1268-5

R.T.: 0.000 min
 Exp R.T. : 9.933 min
 Response: 0
 Conc: N.D.



#45 AR-1268-5

R.T.: 8.634 min
 Delta R.T.: -0.007 min
 Response: 208873
 Conc: 0.59 ng/ml