

Data Path : Z:\pestpcbsrv\HPCHEM1\ECD\_P\Data\PP020625\  
 Data File : PP069589.D  
 Signal(s) : Signal #1: ECD1A.ch Signal #2: ECD2B.ch  
 Acq On : 06 Feb 2025 23:40  
 Operator : YP\AJ  
 Sample : PB166599BS  
 Misc :  
 ALS Vial : 32 Sample Multiplier: 1

Instrument :  
 ECD\_P  
 ClientSampleId :  
 PB166599BS

Integration File signal 1: autoint1.e  
 Integration File signal 2: autoint2.e  
 Quant Time: Feb 07 02:08:49 2025  
 Quant Method : Z:\pestpcbsrv\HPCHEM1\ECD\_P\methods\PP012825.M  
 Quant Title : GC EXTRACTABLES  
 QLast Update : Wed Jan 29 00:13:21 2025  
 Response via : Initial Calibration  
 Integrator: ChemStation

Volume Inj. : 2 µl  
 Signal #1 Phase : ZB-MR1 Signal #2 Phase: ZB-MR2  
 Signal #1 Info : 30Mx0.32mmx 0.50µ Signal #2 Info : 30M x 0.32mm x 0.25µm

Compound	RT#1	RT#2	Resp#1	Resp#2	ng/ml	ng/ml
System Monitoring Compounds						
1) SA Tetrachlo...	4.532	3.838	36149996	22149367	25.254	24.816
2) SA Decachlor...	10.268	8.902	26103663	28137437	23.885	25.157
Target Compounds						
3) L1 AR-1016-1	5.685	4.929	21959784	15548659	473.956	476.733
4) L1 AR-1016-2	5.707	4.948	32328222	21601290	476.275	480.473
5) L1 AR-1016-3	5.770	5.126	19723124	12095029	463.021	486.057
6) L1 AR-1016-4	5.867	5.167	16290108	9657460	465.425	478.180
7) L1 AR-1016-5	6.160	5.383	14691844	12239144	444.419	456.278
8) L2 AR-1221-1	4.729	4.048	1959541	1509236	103.028	122.523
9) L2 AR-1221-2	4.819	4.136	2799579	2034753	204.461	210.128
10) L2 AR-1221-3	4.894	4.213	11401497	8262230	271.830	283.204
11) L3 AR-1232-1	4.894	4.213	11401497	8262230	342.453	351.891
12) L3 AR-1232-2	5.421	4.948	15106519	21601290	924.398	916.405
13) L3 AR-1232-3	5.707	5.126	32328222	12095029	940.896	934.178
14) L3 AR-1232-4	5.867	5.210	16290108	11603251	914.343	1046.629
15) L3 AR-1232-5	5.958	5.383	13684104	12239144	1193.824	1002.361
16) L4 AR-1242-1	5.685	4.929	21959784	15548659	526.547	539.284
17) L4 AR-1242-2	5.707	4.948	32328222	21601290	548.020	548.287
18) L4 AR-1242-3	5.770	5.126	19723124	12095029	531.640	537.459
19) L4 AR-1242-4	5.867	5.210	16290108	11603251	496.731	537.630
20) L4 AR-1242-5	6.598	5.737	3070579	10160741	94.235	353.191 #
21) L5 AR-1248-1	5.685	4.929	21959784	15548659	676.955	706.418
22) L5 AR-1248-2	5.958	5.167	13684104	9657460	322.386	321.224
23) L5 AR-1248-3	6.160	5.210	14691844	11603251	312.678	374.488
24) L5 AR-1248-4	6.536	5.383	14821362	12239144	268.886	331.292
25) L5 AR-1248-5	6.598	5.778	3070579	1644609	57.519	43.986
26) L6 AR-1254-1	6.536	5.737	14821362	10160741	256.143	184.554 #
27) L6 AR-1254-2	6.752	5.885	13297951	10240945	165.723	211.726 #
28) L6 AR-1254-3	7.115	6.306	7100900	22095271	84.245	291.125 #
29) L6 AR-1254-4	7.398	6.518	5045152	1839988	73.989	35.902 #
30) L6 AR-1254-5	7.813	6.937	45111769	33312752	662.958	500.489
31) L7 AR-1260-1	7.279	6.421	27401378	24330331	468.910	504.470
32) L7 AR-1260-2	7.534	6.609	34413320	30555745	442.257	498.432
33) L7 AR-1260-3	7.893	6.763	24108194	27442622	385.612	456.188
34) L7 AR-1260-4	8.117	7.236	26480192	20289791	401.356	436.643
35) L7 AR-1260-5	8.438	7.476	51393039	49082929	392.535	441.611
36) L8 AR-1262-1	8.117	6.976	26480192	22680271	335.115	319.381
37) L8 AR-1262-2	8.438	7.236	51393039	20289791	336.071	332.732
38) L8 AR-1262-3	8.764	7.761	33396293	11309728	314.230	216.250 #
39) L8 AR-1262-4	8.826	7.824	20540723	35367429	251.131	382.613 #
40) L8 AR-1262-5	9.502	8.328	13292648	12627651	234.810	264.220
41) L9 AR-1268-1	8.764	7.761	33396293	11309728	189.130	77.932 #

Data Path : Z:\pestpcbsrv\HPCHEM1\ECD\_P\Data\PP020625\  
 Data File : PP069589.D  
 Signal(s) : Signal #1: ECD1A.ch Signal #2: ECD2B.ch  
 Acq On : 06 Feb 2025 23:40  
 Operator : YP\AJ  
 Sample : PB166599BS  
 Misc :  
 ALS Vial : 32 Sample Multiplier: 1

Instrument :  
 ECD\_P  
 ClientSampleId :  
 PB166599BS

Integration File signal 1: autoint1.e  
 Integration File signal 2: autoint2.e  
 Quant Time: Feb 07 02:08:49 2025  
 Quant Method : Z:\pestpcbsrv\HPCHEM1\ECD\_P\methods\PP012825.M  
 Quant Title : GC EXTRACTABLES  
 QLast Update : Wed Jan 29 00:13:21 2025  
 Response via : Initial Calibration  
 Integrator: ChemStation

Volume Inj. : 2 µl  
 Signal #1 Phase : ZB-MR1 Signal #2 Phase: ZB-MR2  
 Signal #1 Info : 30Mx0.32mmx 0.50µ Signal #2 Info : 30M x 0.32mm x 0.25µm

	Compound	RT#1	RT#2	Resp#1	Resp#2	ng/ml	ng/ml
42)	L9 AR-1268-2	8.826	7.824	20540723	35367429	130.524	266.290 #
43)	L9 AR-1268-3	9.081	8.033	3609324	852836	26.990	7.498 #
44)	L9 AR-1268-4	9.502	8.328	13292648	12627651	226.370	242.476
45)	L9 AR-1268-5	9.922	8.633	4324304	4404296	11.353	12.365

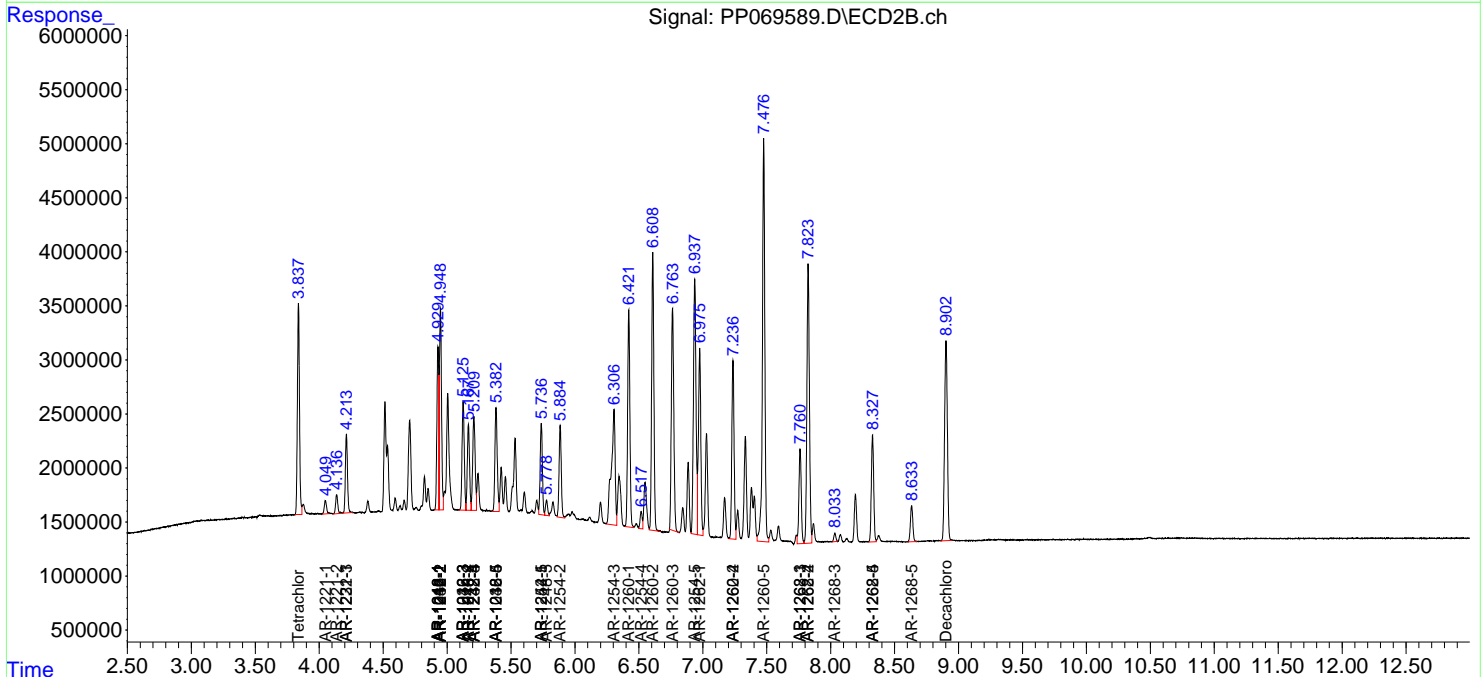
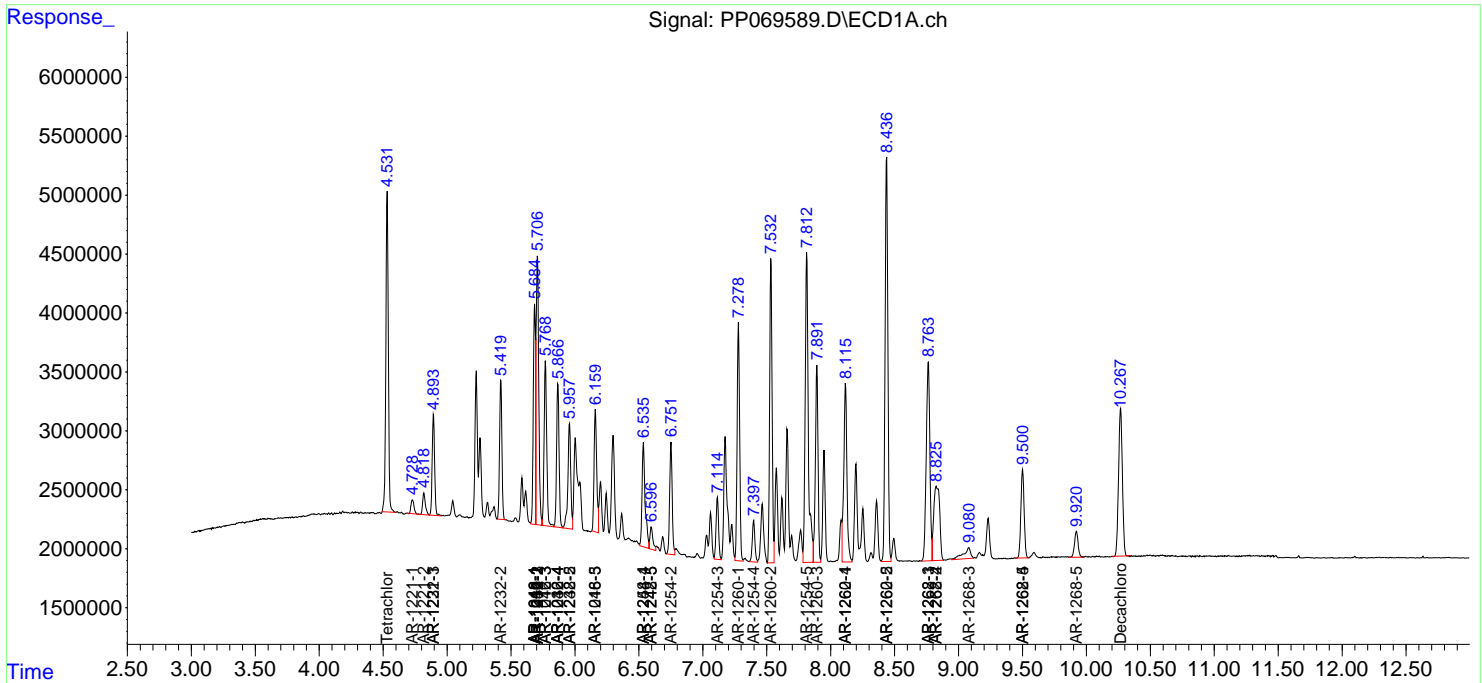
(f)=RT Delta > 1/2 Window (#)=Amounts differ by > 25% (m)=manual int.

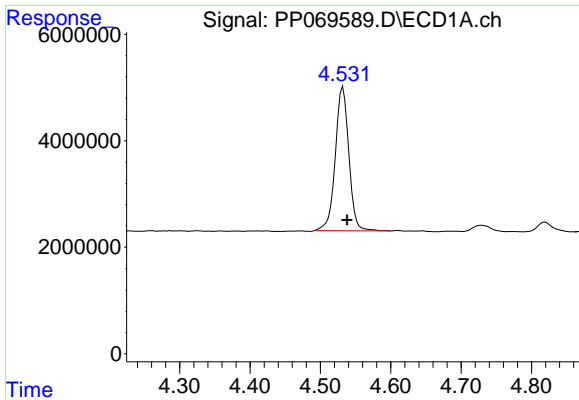
Data Path : Z:\pestpcbsrv\HPCHEM1\ECD\_P\Data\PP020625\  
 Data File : PP069589.D  
 Signal(s) : Signal #1: ECD1A.ch Signal #2: ECD2B.ch  
 Acq On : 06 Feb 2025 23:40  
 Operator : YP\AJ  
 Sample : PB166599BS  
 Misc :  
 ALS Vial : 32 Sample Multiplier: 1

Instrument :  
 ECD\_P  
 ClientSampleId :  
 PB166599BS

Integration File signal 1: autoint1.e  
 Integration File signal 2: autoint2.e  
 Quant Time: Feb 07 02:08:49 2025  
 Quant Method : Z:\pestpcbsrv\HPCHEM1\ECD\_P\methods\PP012825.M  
 Quant Title : GC EXTRACTABLES  
 QLast Update : Wed Jan 29 00:13:21 2025  
 Response via : Initial Calibration  
 Integrator: ChemStation

Volume Inj. : 2 µl  
 Signal #1 Phase : ZB-MR1 Signal #2 Phase: ZB-MR2  
 Signal #1 Info : 30Mx0.32mmx 0.50µ Signal #2 Info : 30M x 0.32mm x 0.25µm

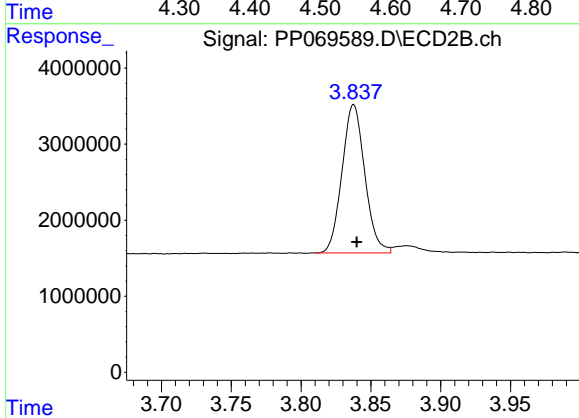




#1 Tetrachloro-m-xylene

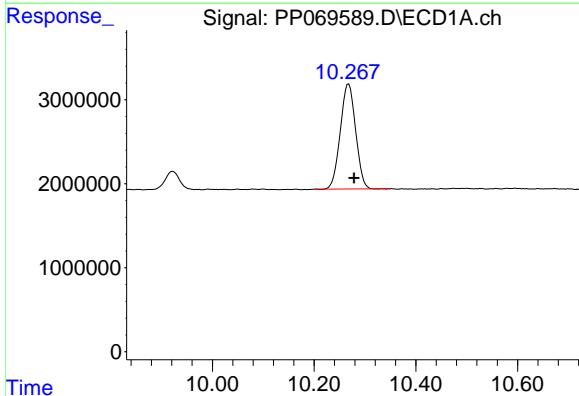
R.T.: 4.532 min  
 Delta R.T.: -0.006 min  
 Response: 36149996  
 Conc: 25.25 ng/ml

Instrument :  
 ECD\_P  
 ClientSampleId :  
 PB166599BS



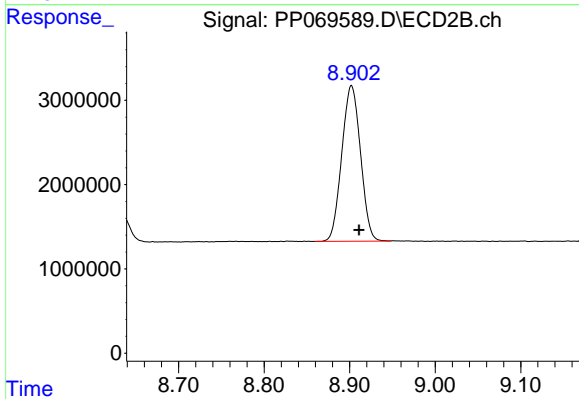
#1 Tetrachloro-m-xylene

R.T.: 3.838 min  
 Delta R.T.: -0.002 min  
 Response: 22149367  
 Conc: 24.82 ng/ml



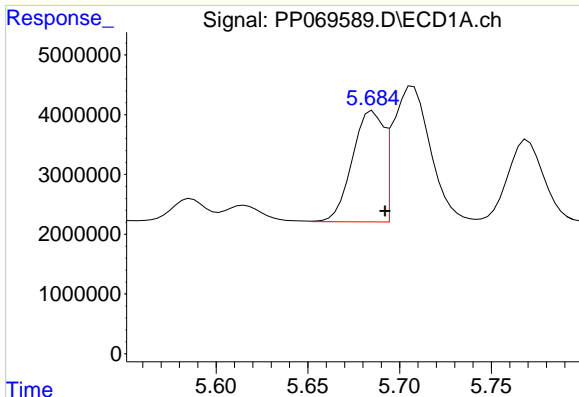
#2 Decachlorobiphenyl

R.T.: 10.268 min  
 Delta R.T.: -0.011 min  
 Response: 26103663  
 Conc: 23.88 ng/ml



#2 Decachlorobiphenyl

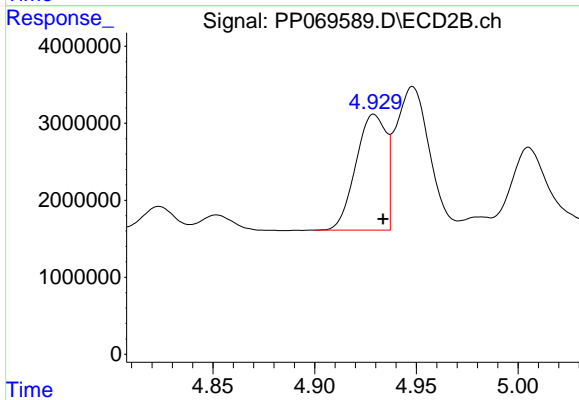
R.T.: 8.902 min  
 Delta R.T.: -0.009 min  
 Response: 28137437  
 Conc: 25.16 ng/ml



#3 AR-1016-1

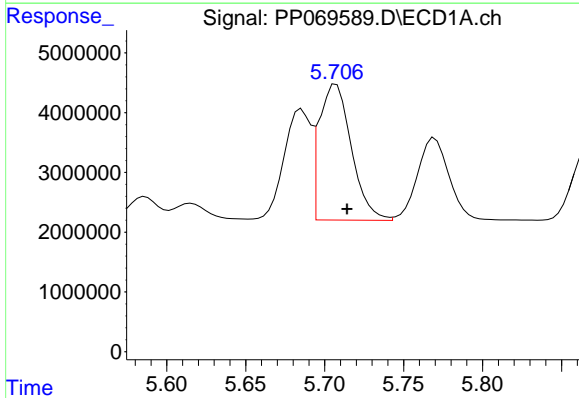
R.T.: 5.685 min  
 Delta R.T.: -0.007 min  
 Response: 21959784  
 Conc: 473.96 ng/ml

Instrument :  
 ECD\_P  
 ClientSampleId :  
 PB166599BS



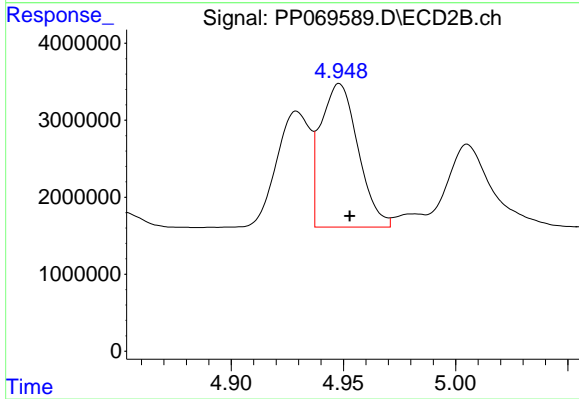
#3 AR-1016-1

R.T.: 4.929 min  
 Delta R.T.: -0.004 min  
 Response: 15548659  
 Conc: 476.73 ng/ml



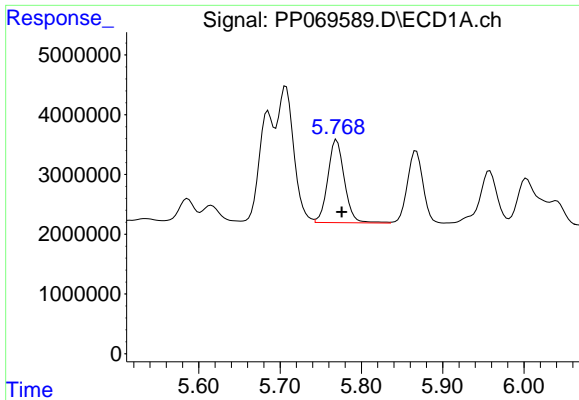
#4 AR-1016-2

R.T.: 5.707 min  
 Delta R.T.: -0.007 min  
 Response: 32328222  
 Conc: 476.28 ng/ml



#4 AR-1016-2

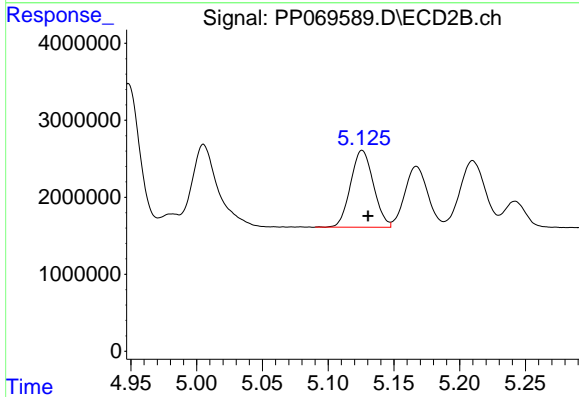
R.T.: 4.948 min  
 Delta R.T.: -0.005 min  
 Response: 21601290  
 Conc: 480.47 ng/ml



#5 AR-1016-3

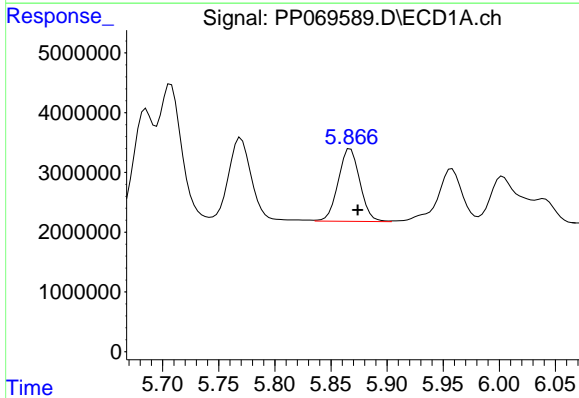
R.T.: 5.770 min  
 Delta R.T.: -0.006 min  
 Response: 19723124  
 Conc: 463.02 ng/ml

Instrument :  
 ECD\_P  
 ClientSampleId :  
 PB166599BS



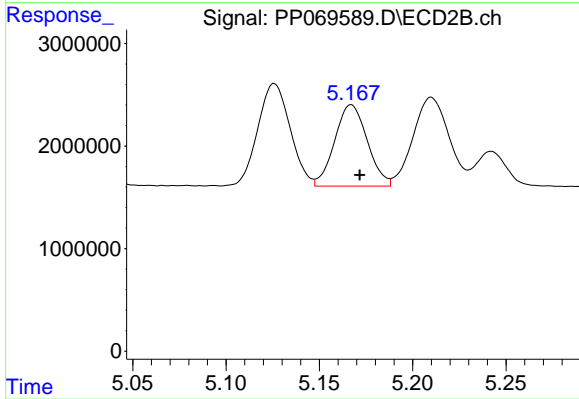
#5 AR-1016-3

R.T.: 5.126 min  
 Delta R.T.: -0.004 min  
 Response: 12095029  
 Conc: 486.06 ng/ml



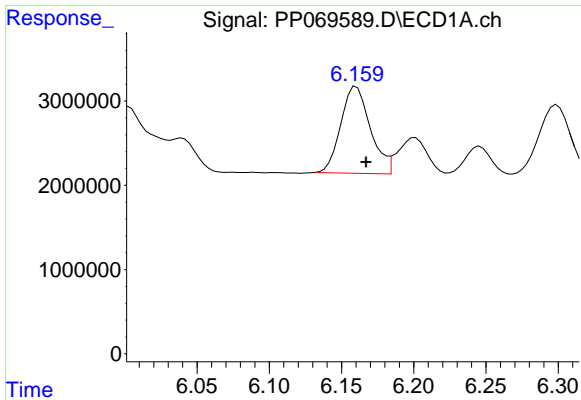
#6 AR-1016-4

R.T.: 5.867 min  
 Delta R.T.: -0.007 min  
 Response: 16290108  
 Conc: 465.43 ng/ml



#6 AR-1016-4

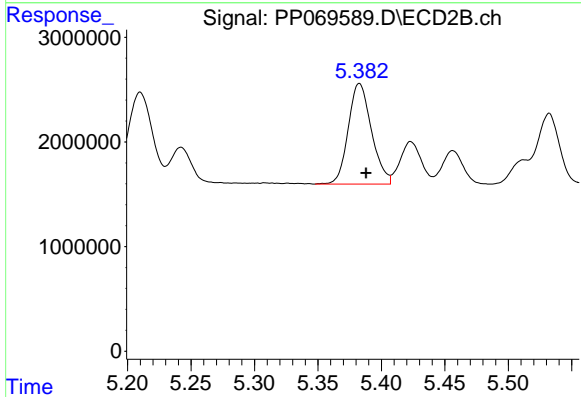
R.T.: 5.167 min  
 Delta R.T.: -0.005 min  
 Response: 9657460  
 Conc: 478.18 ng/ml



#7 AR-1016-5

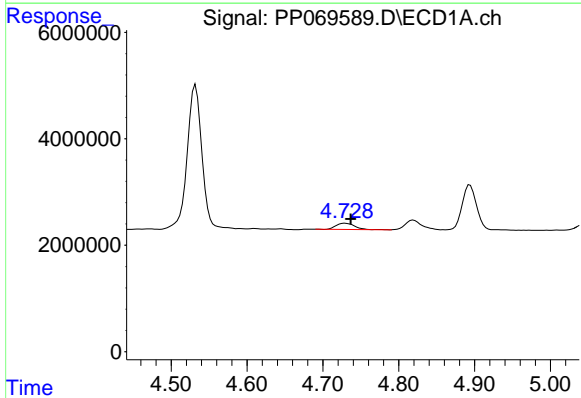
R.T.: 6.160 min  
 Delta R.T.: -0.007 min  
 Response: 14691844  
 Conc: 444.42 ng/ml

Instrument :  
 ECD\_P  
 ClientSampleId :  
 PB166599BS



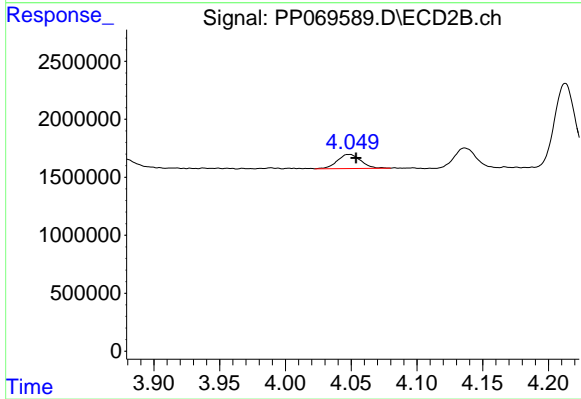
#7 AR-1016-5

R.T.: 5.383 min  
 Delta R.T.: -0.005 min  
 Response: 12239144  
 Conc: 456.28 ng/ml



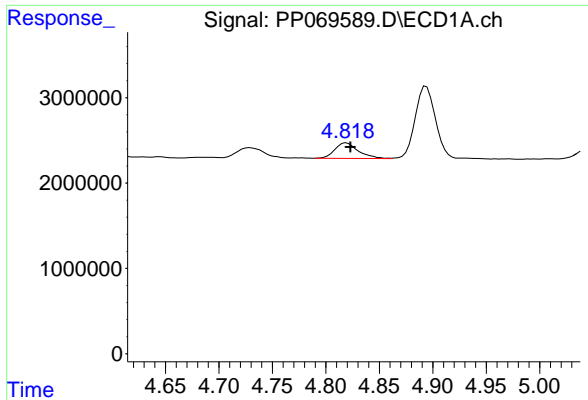
#8 AR-1221-1

R.T.: 4.729 min  
 Delta R.T.: -0.007 min  
 Response: 1959541  
 Conc: 103.03 ng/ml



#8 AR-1221-1

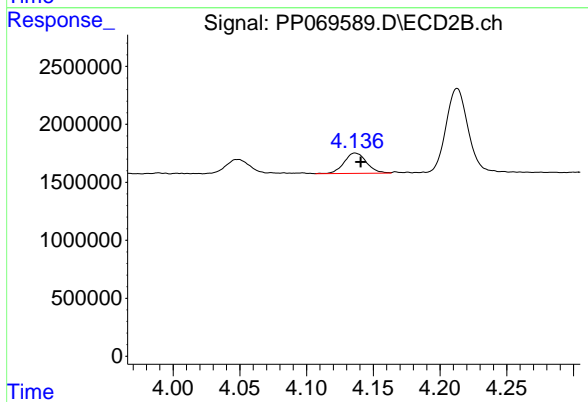
R.T.: 4.048 min  
 Delta R.T.: -0.005 min  
 Response: 1509236  
 Conc: 122.52 ng/ml



#9 AR-1221-2

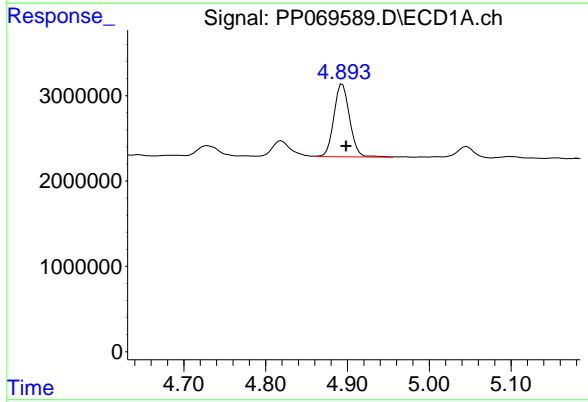
R.T.: 4.819 min  
 Delta R.T.: -0.004 min  
 Response: 2799579  
 Conc: 204.46 ng/ml

Instrument :  
 ECD\_P  
 ClientSampleId :  
 PB166599BS



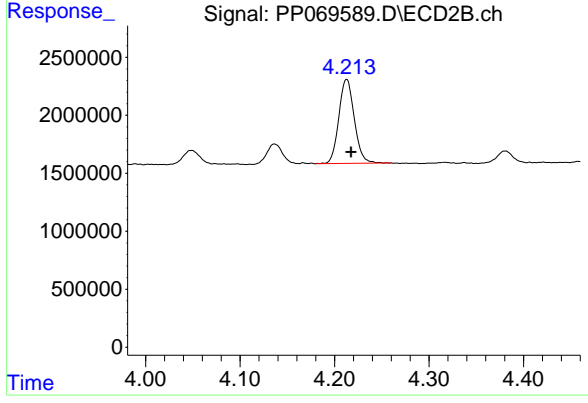
#9 AR-1221-2

R.T.: 4.136 min  
 Delta R.T.: -0.004 min  
 Response: 2034753  
 Conc: 210.13 ng/ml



#10 AR-1221-3

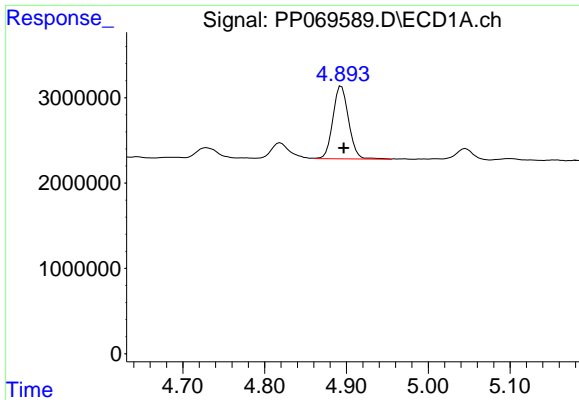
R.T.: 4.894 min  
 Delta R.T.: -0.005 min  
 Response: 11401497  
 Conc: 271.83 ng/ml



#10 AR-1221-3

R.T.: 4.213 min  
 Delta R.T.: -0.005 min  
 Response: 8262230  
 Conc: 283.20 ng/ml

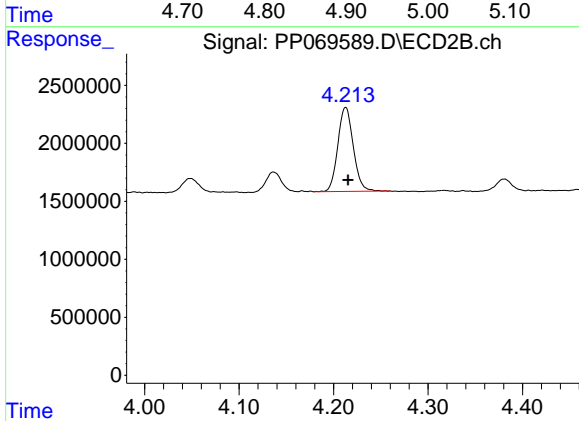




#11 AR-1232-1

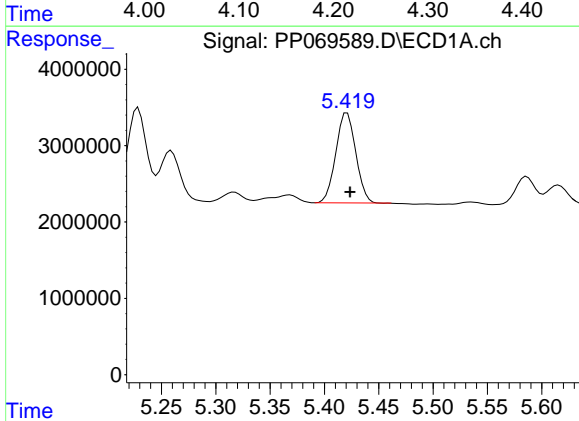
R.T.: 4.894 min  
 Delta R.T.: -0.003 min  
 Response: 11401497  
 Conc: 342.45 ng/ml

Instrument :  
 ECD\_P  
 ClientSampleId :  
 PB166599BS



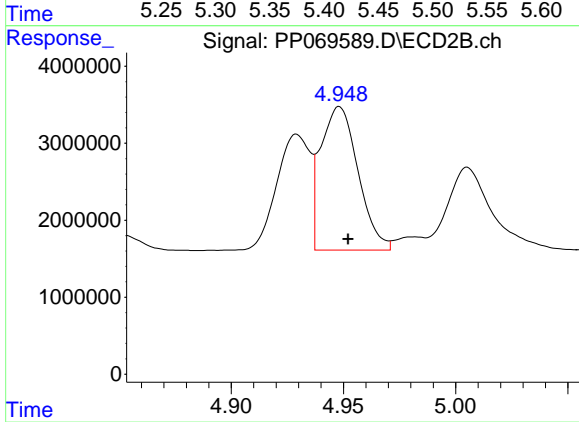
#11 AR-1232-1

R.T.: 4.213 min  
 Delta R.T.: -0.003 min  
 Response: 8262230  
 Conc: 351.89 ng/ml



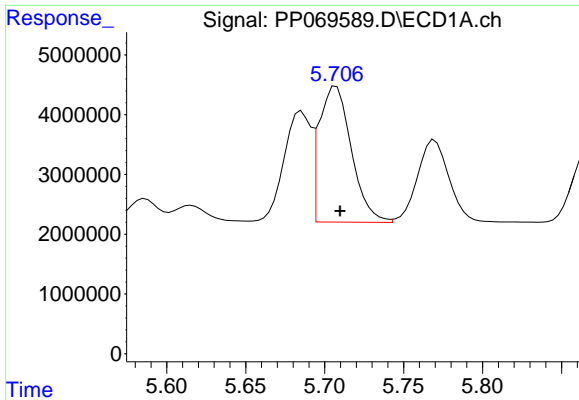
#12 AR-1232-2

R.T.: 5.421 min  
 Delta R.T.: -0.003 min  
 Response: 15106519  
 Conc: 924.40 ng/ml



#12 AR-1232-2

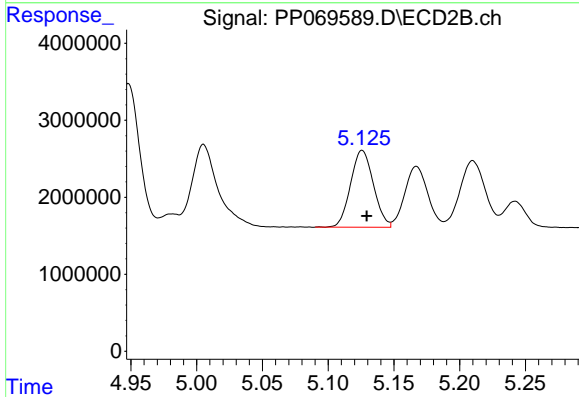
R.T.: 4.948 min  
 Delta R.T.: -0.004 min  
 Response: 21601290  
 Conc: 916.41 ng/ml



#13 AR-1232-3

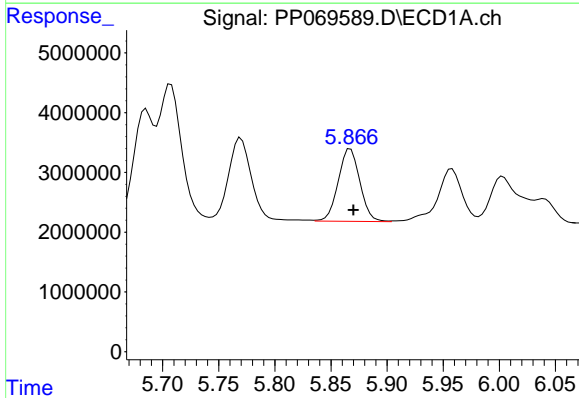
R.T.: 5.707 min  
 Delta R.T.: -0.002 min  
 Response: 32328222  
 Conc: 940.90 ng/ml

Instrument :  
 ECD\_P  
 ClientSampleId :  
 PB166599BS



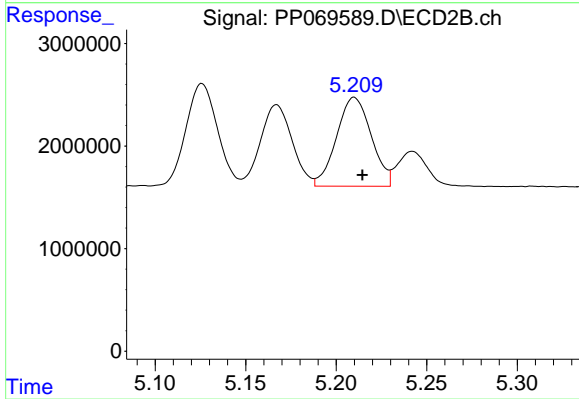
#13 AR-1232-3

R.T.: 5.126 min  
 Delta R.T.: -0.003 min  
 Response: 12095029  
 Conc: 934.18 ng/ml



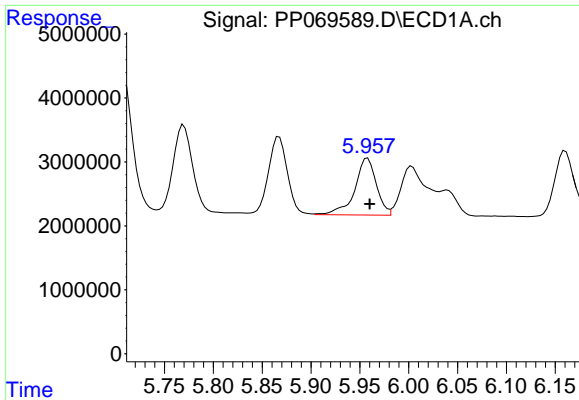
#14 AR-1232-4

R.T.: 5.867 min  
 Delta R.T.: -0.003 min  
 Response: 16290108  
 Conc: 914.34 ng/ml



#14 AR-1232-4

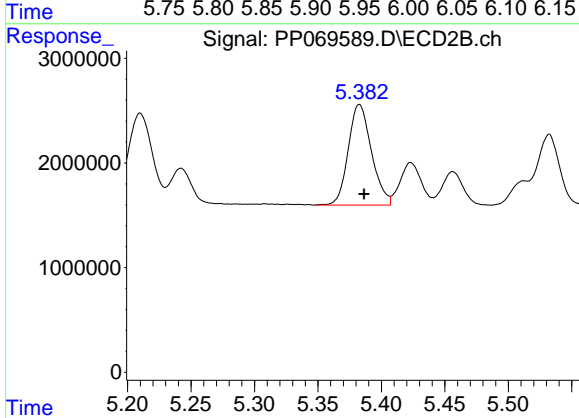
R.T.: 5.210 min  
 Delta R.T.: -0.005 min  
 Response: 11603251  
 Conc: 1046.63 ng/ml



#15 AR-1232-5

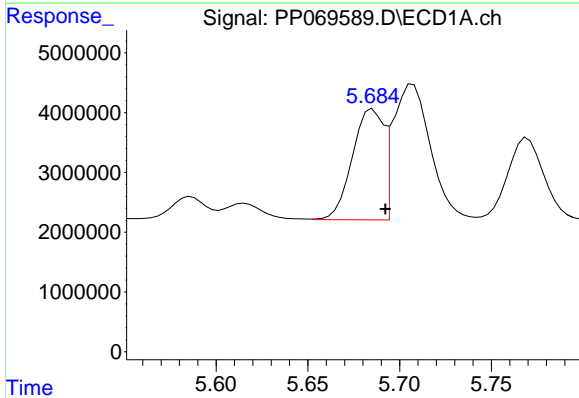
R.T.: 5.958 min  
 Delta R.T.: -0.002 min  
 Response: 13684104  
 Conc: 1193.82 ng/ml

Instrument :  
 ECD\_P  
 ClientSampleId :  
 PB166599BS



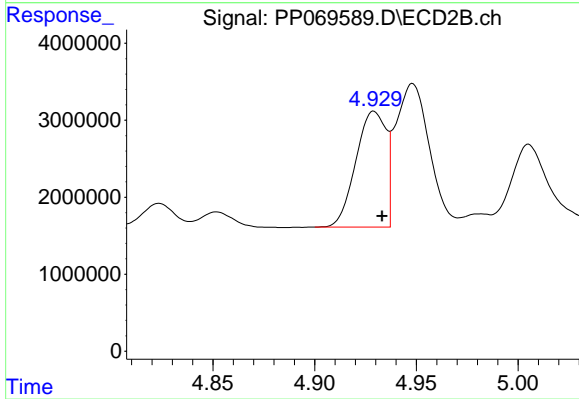
#15 AR-1232-5

R.T.: 5.383 min  
 Delta R.T.: -0.004 min  
 Response: 12239144  
 Conc: 1002.36 ng/ml



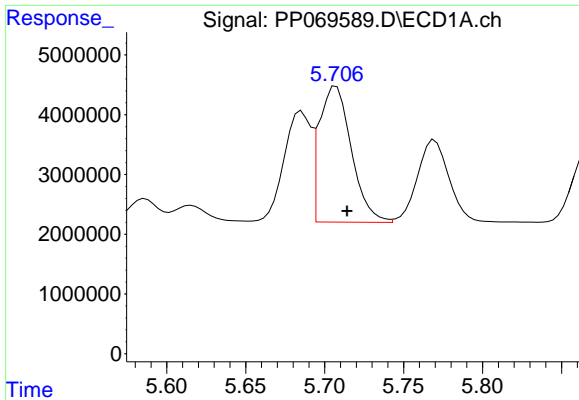
#16 AR-1242-1

R.T.: 5.685 min  
 Delta R.T.: -0.007 min  
 Response: 21959784  
 Conc: 526.55 ng/ml



#16 AR-1242-1

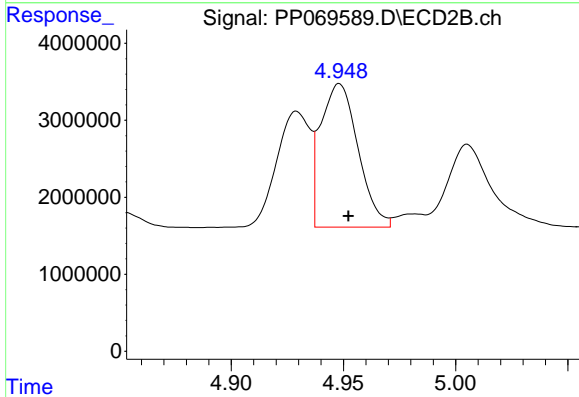
R.T.: 4.929 min  
 Delta R.T.: -0.004 min  
 Response: 15548659  
 Conc: 539.28 ng/ml



#17 AR-1242-2

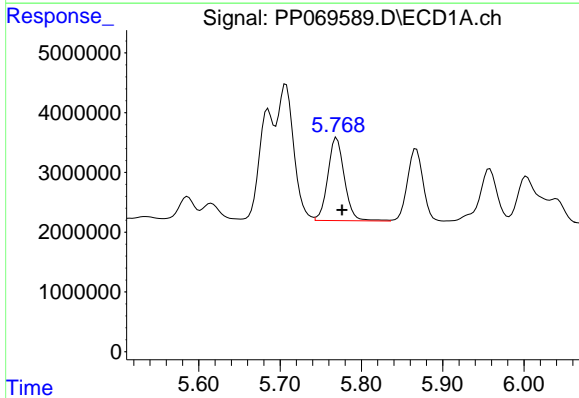
R.T.: 5.707 min  
 Delta R.T.: -0.007 min  
 Response: 32328222  
 Conc: 548.02 ng/ml

Instrument :  
 ECD\_P  
 ClientSampleId :  
 PB166599BS



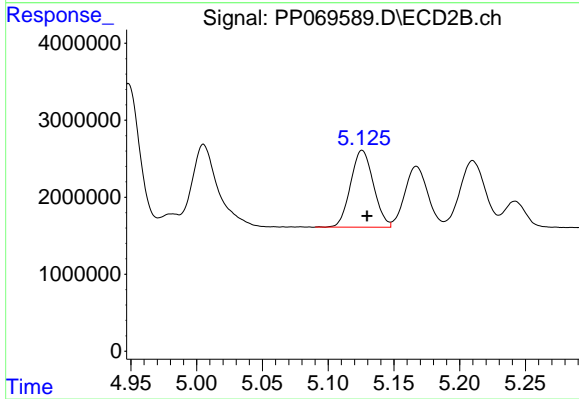
#17 AR-1242-2

R.T.: 4.948 min  
 Delta R.T.: -0.004 min  
 Response: 21601290  
 Conc: 548.29 ng/ml



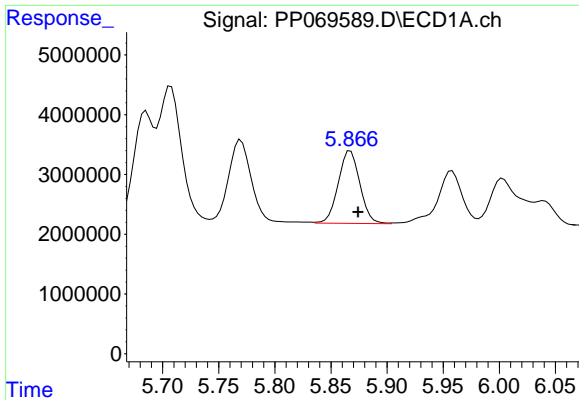
#18 AR-1242-3

R.T.: 5.770 min  
 Delta R.T.: -0.007 min  
 Response: 19723124  
 Conc: 531.64 ng/ml



#18 AR-1242-3

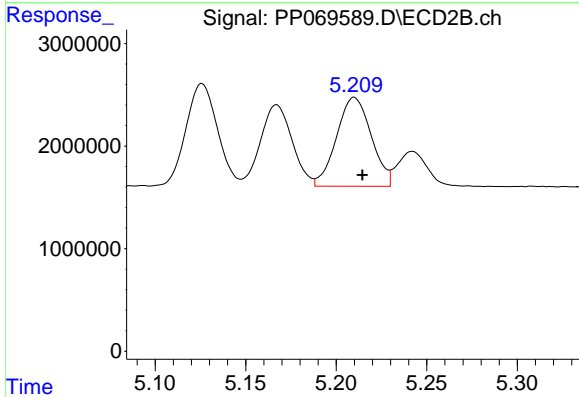
R.T.: 5.126 min  
 Delta R.T.: -0.004 min  
 Response: 12095029  
 Conc: 537.46 ng/ml



#19 AR-1242-4

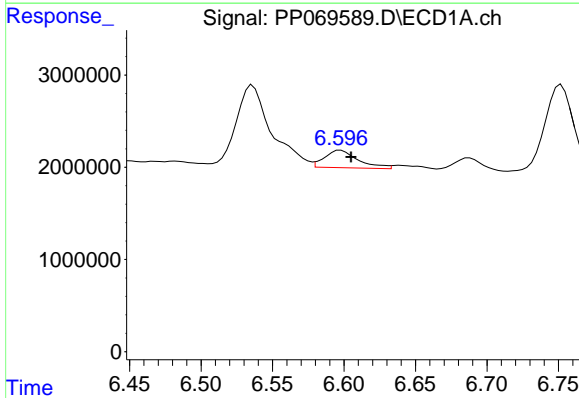
R.T.: 5.867 min  
 Delta R.T.: -0.007 min  
 Response: 16290108  
 Conc: 496.73 ng/ml

Instrument :  
 ECD\_P  
 ClientSampleId :  
 PB166599BS



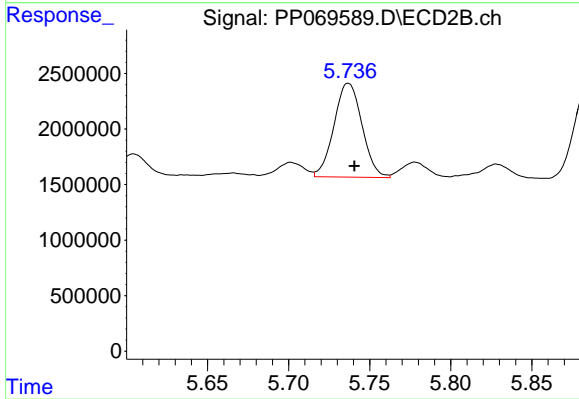
#19 AR-1242-4

R.T.: 5.210 min  
 Delta R.T.: -0.004 min  
 Response: 11603251  
 Conc: 537.63 ng/ml



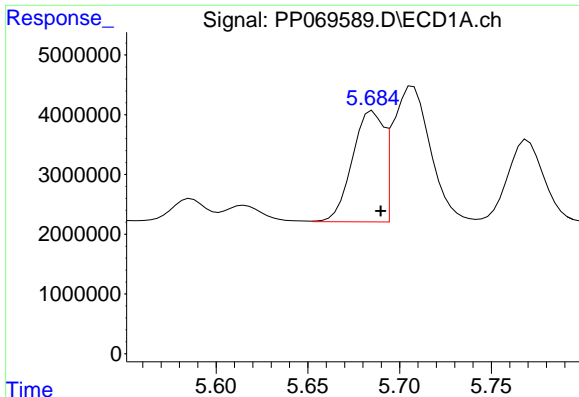
#20 AR-1242-5

R.T.: 6.598 min  
 Delta R.T.: -0.007 min  
 Response: 3070579  
 Conc: 94.23 ng/ml



#20 AR-1242-5

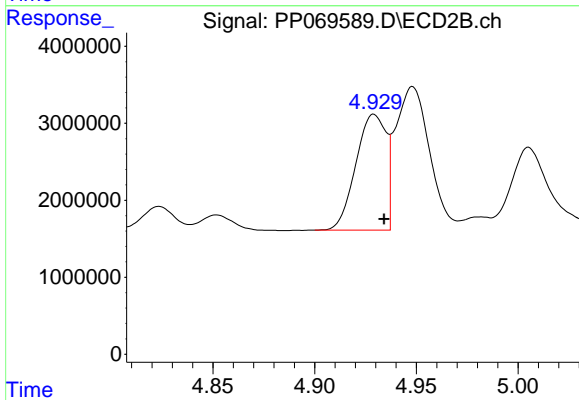
R.T.: 5.737 min  
 Delta R.T.: -0.004 min  
 Response: 10160741  
 Conc: 353.19 ng/ml



#21 AR-1248-1

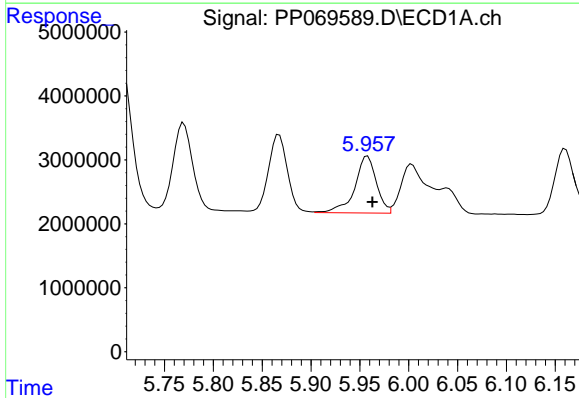
R.T.: 5.685 min  
 Delta R.T.: -0.004 min  
 Response: 21959784  
 Conc: 676.96 ng/ml

Instrument :  
 ECD\_P  
 ClientSampleId :  
 PB166599BS



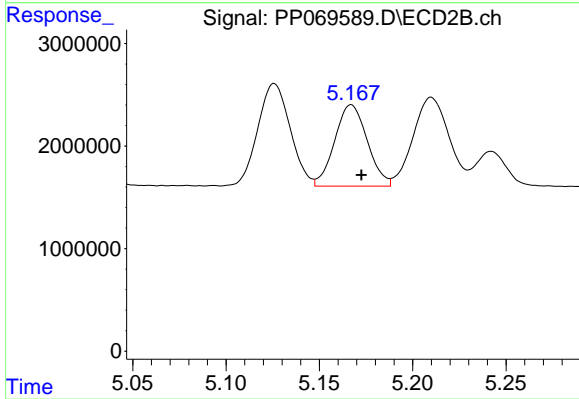
#21 AR-1248-1

R.T.: 4.929 min  
 Delta R.T.: -0.005 min  
 Response: 15548659  
 Conc: 706.42 ng/ml



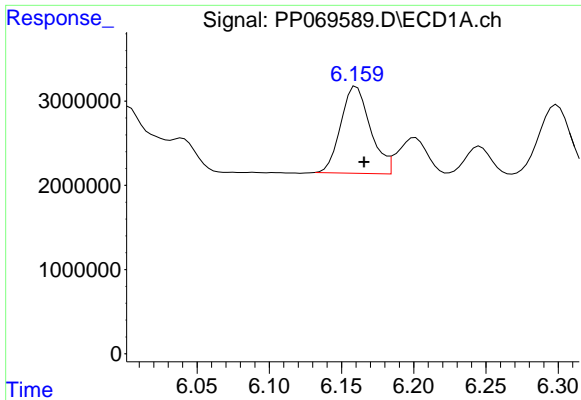
#22 AR-1248-2

R.T.: 5.958 min  
 Delta R.T.: -0.005 min  
 Response: 13684104  
 Conc: 322.39 ng/ml



#22 AR-1248-2

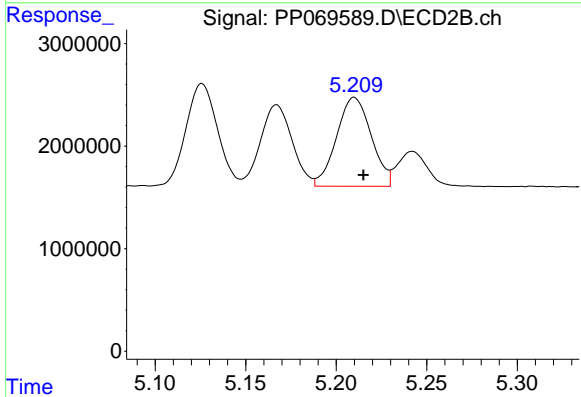
R.T.: 5.167 min  
 Delta R.T.: -0.005 min  
 Response: 9657460  
 Conc: 321.22 ng/ml



#23 AR-1248-3

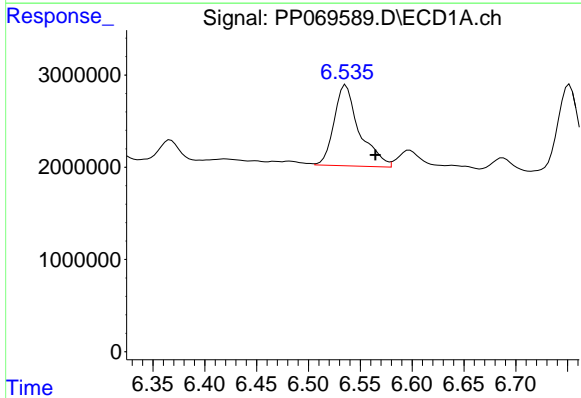
R.T.: 6.160 min  
 Delta R.T.: -0.005 min  
 Response: 14691844  
 Conc: 312.68 ng/ml

Instrument :  
 ECD\_P  
 ClientSampleId :  
 PB166599BS



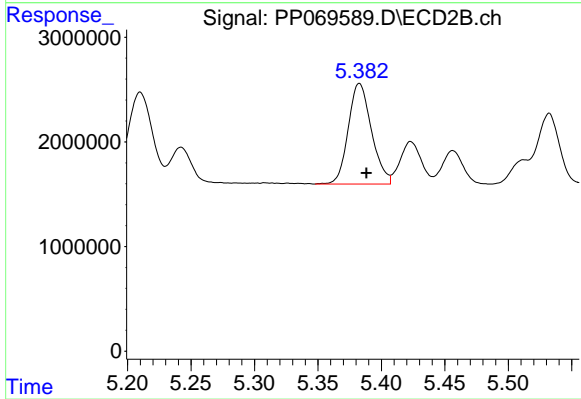
#23 AR-1248-3

R.T.: 5.210 min  
 Delta R.T.: -0.005 min  
 Response: 11603251  
 Conc: 374.49 ng/ml



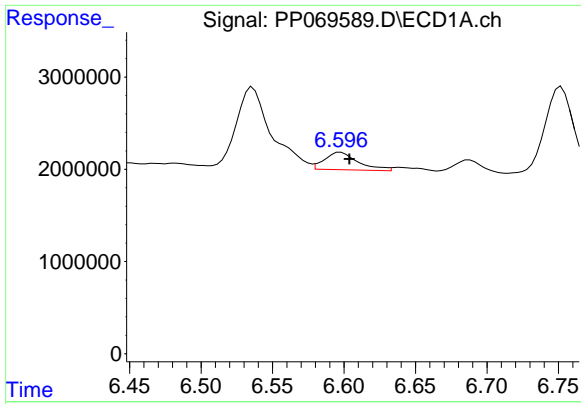
#24 AR-1248-4

R.T.: 6.536 min  
 Delta R.T.: -0.028 min  
 Response: 14821362  
 Conc: 268.89 ng/ml



#24 AR-1248-4

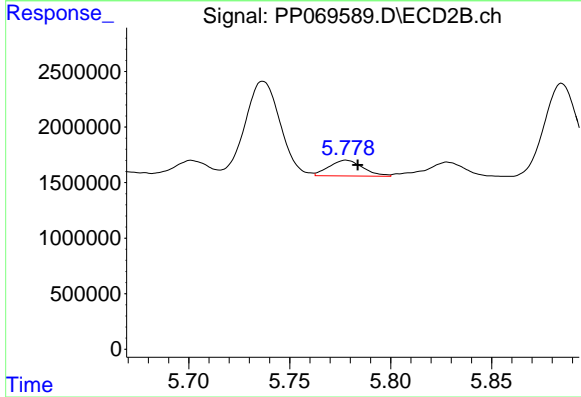
R.T.: 5.383 min  
 Delta R.T.: -0.006 min  
 Response: 12239144  
 Conc: 331.29 ng/ml



#25 AR-1248-5

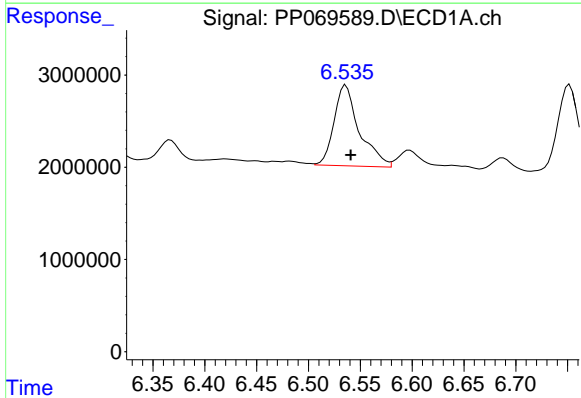
R.T.: 6.598 min  
 Delta R.T.: -0.006 min  
 Response: 3070579  
 Conc: 57.52 ng/ml

Instrument :  
 ECD\_P  
 ClientSampleId :  
 PB166599BS



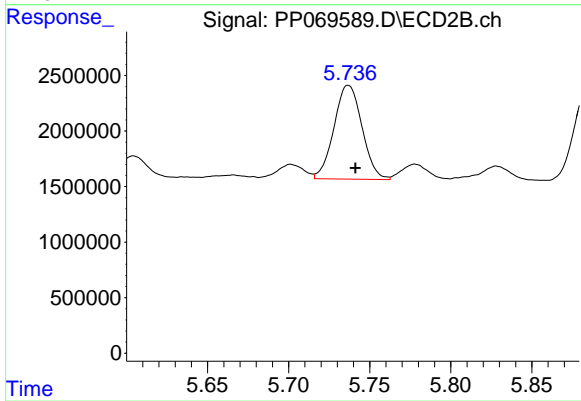
#25 AR-1248-5

R.T.: 5.778 min  
 Delta R.T.: -0.006 min  
 Response: 1644609  
 Conc: 43.99 ng/ml



#26 AR-1254-1

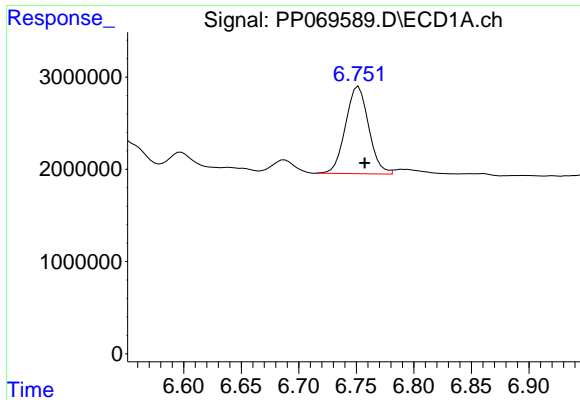
R.T.: 6.536 min  
 Delta R.T.: -0.005 min  
 Response: 14821362  
 Conc: 256.14 ng/ml



#26 AR-1254-1

R.T.: 5.737 min  
 Delta R.T.: -0.004 min  
 Response: 10160741  
 Conc: 184.55 ng/ml

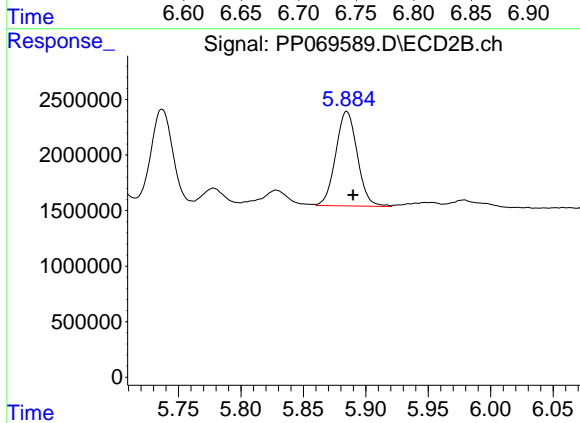




#27 AR-1254-2

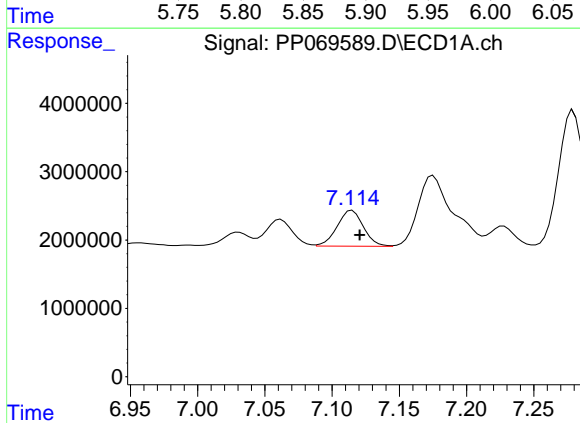
R.T.: 6.752 min  
 Delta R.T.: -0.005 min  
 Response: 13297951  
 Conc: 165.72 ng/ml

Instrument :  
 ECD\_P  
 ClientSampleId :  
 PB166599BS



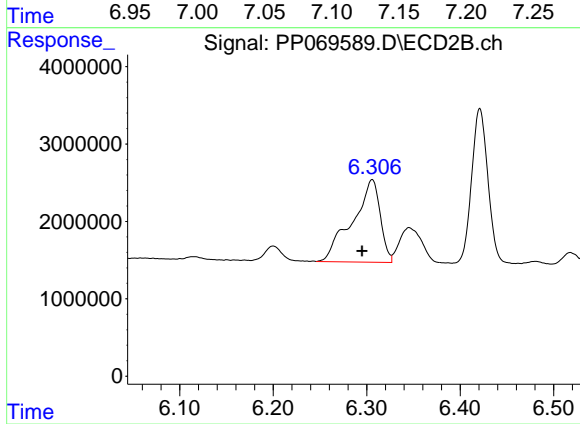
#27 AR-1254-2

R.T.: 5.885 min  
 Delta R.T.: -0.005 min  
 Response: 10240945  
 Conc: 211.73 ng/ml



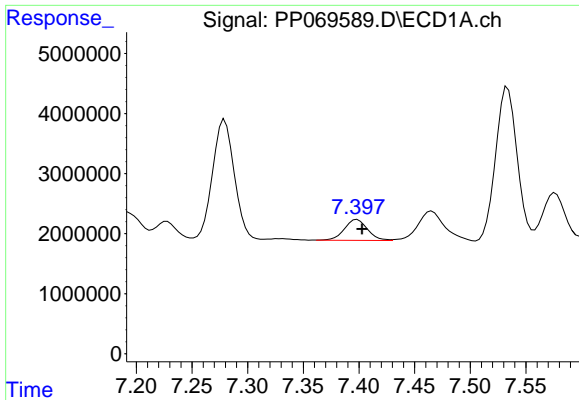
#28 AR-1254-3

R.T.: 7.115 min  
 Delta R.T.: -0.006 min  
 Response: 7100900  
 Conc: 84.25 ng/ml



#28 AR-1254-3

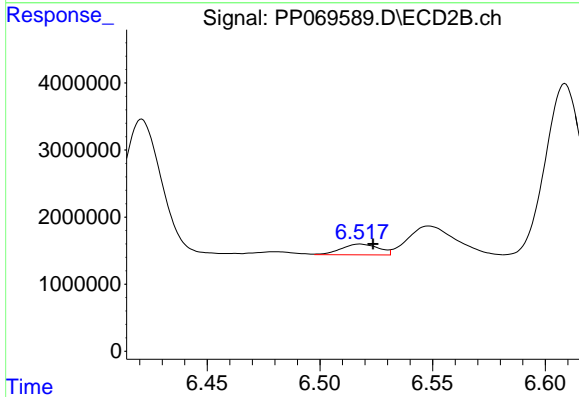
R.T.: 6.306 min  
 Delta R.T.: 0.011 min  
 Response: 22095271  
 Conc: 291.13 ng/ml



#29 AR-1254-4

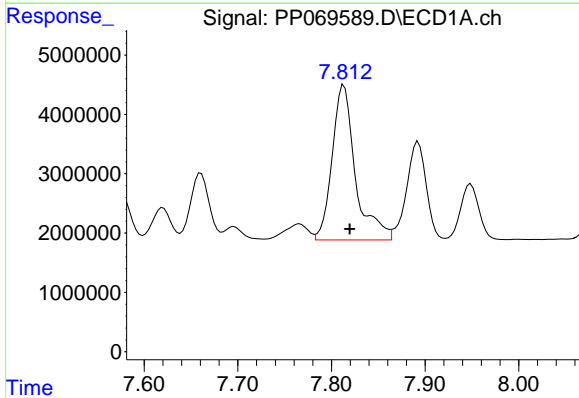
R.T.: 7.398 min  
 Delta R.T.: -0.004 min  
 Response: 5045152  
 Conc: 73.99 ng/ml

Instrument :  
 ECD\_P  
 ClientSampleId :  
 PB166599BS



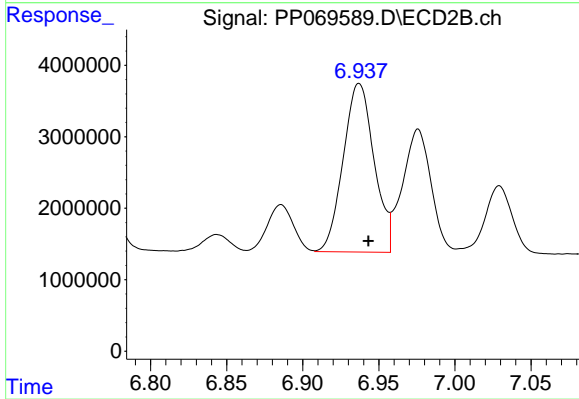
#29 AR-1254-4

R.T.: 6.518 min  
 Delta R.T.: -0.006 min  
 Response: 1839988  
 Conc: 35.90 ng/ml



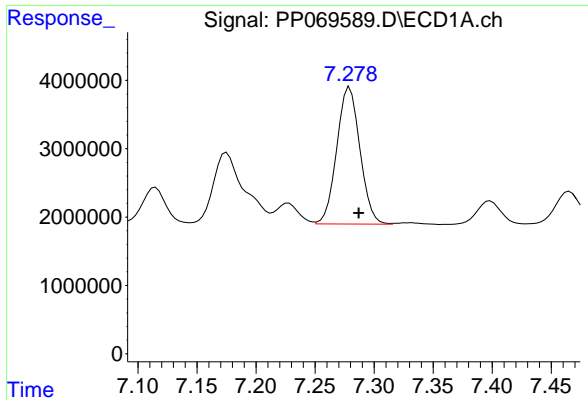
#30 AR-1254-5

R.T.: 7.813 min  
 Delta R.T.: -0.006 min  
 Response: 45111769  
 Conc: 662.96 ng/ml



#30 AR-1254-5

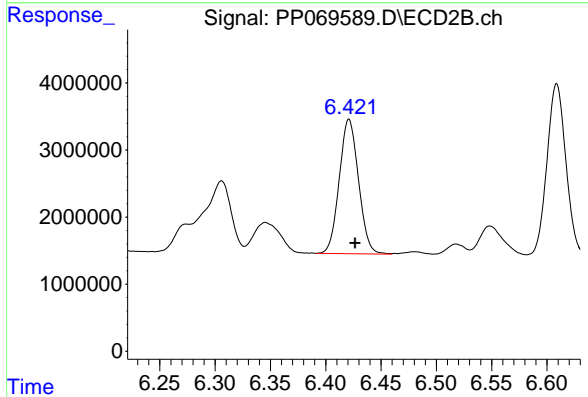
R.T.: 6.937 min  
 Delta R.T.: -0.006 min  
 Response: 33312752  
 Conc: 500.49 ng/ml



#31 AR-1260-1

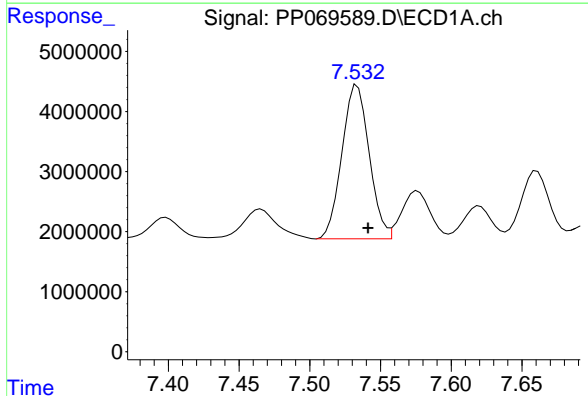
R.T.: 7.279 min  
 Delta R.T.: -0.008 min  
 Response: 27401378  
 Conc: 468.91 ng/ml

Instrument :  
 ECD\_P  
 ClientSampleId :  
 PB166599BS



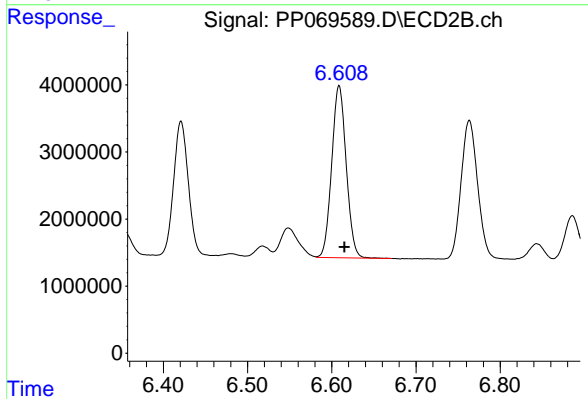
#31 AR-1260-1

R.T.: 6.421 min  
 Delta R.T.: -0.005 min  
 Response: 24330331  
 Conc: 504.47 ng/ml



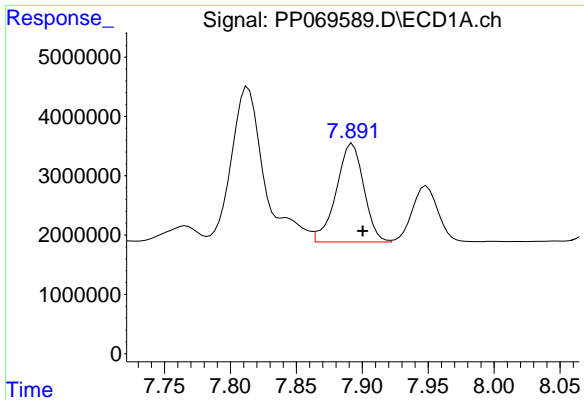
#32 AR-1260-2

R.T.: 7.534 min  
 Delta R.T.: -0.008 min  
 Response: 34413320  
 Conc: 442.26 ng/ml



#32 AR-1260-2

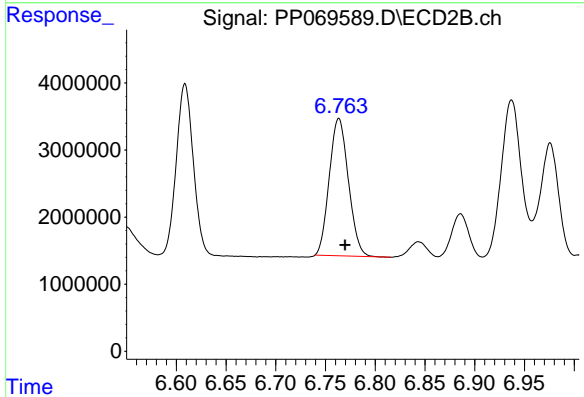
R.T.: 6.609 min  
 Delta R.T.: -0.006 min  
 Response: 30555745  
 Conc: 498.43 ng/ml



#33 AR-1260-3

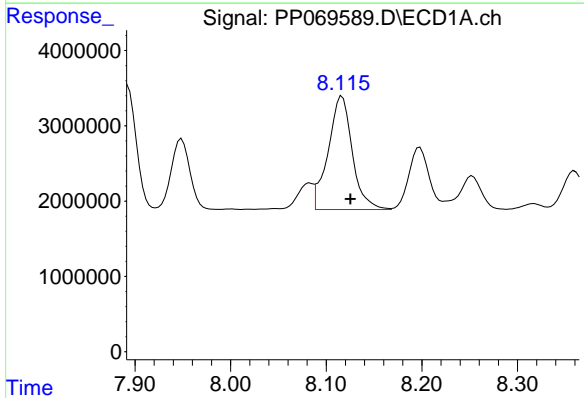
R.T.: 7.893 min  
 Delta R.T.: -0.008 min  
 Response: 24108194  
 Conc: 385.61 ng/ml

Instrument :  
 ECD\_P  
 ClientSampleId :  
 PB166599BS



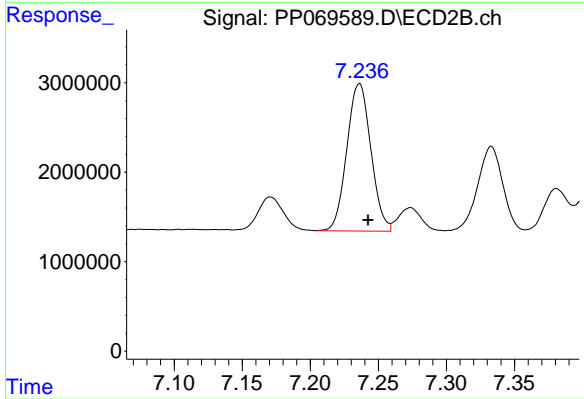
#33 AR-1260-3

R.T.: 6.763 min  
 Delta R.T.: -0.006 min  
 Response: 27442622  
 Conc: 456.19 ng/ml



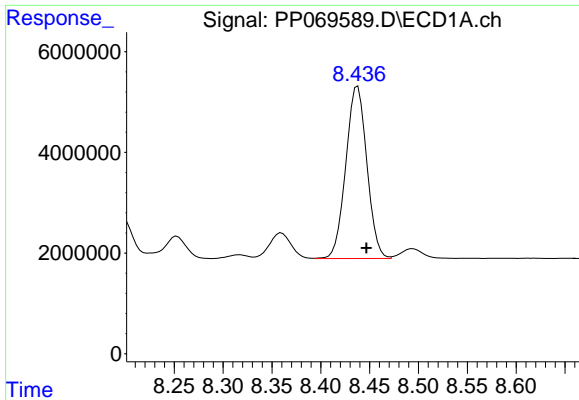
#34 AR-1260-4

R.T.: 8.117 min  
 Delta R.T.: -0.009 min  
 Response: 26480192  
 Conc: 401.36 ng/ml



#34 AR-1260-4

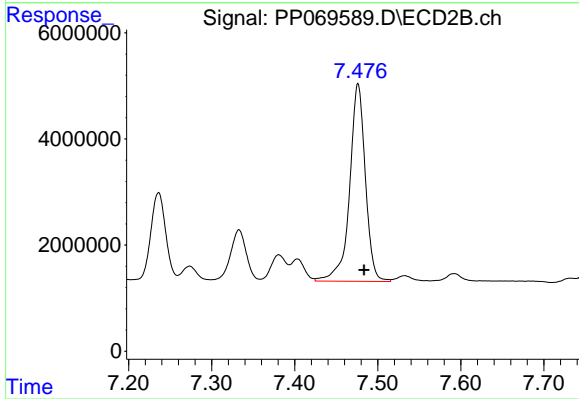
R.T.: 7.236 min  
 Delta R.T.: -0.006 min  
 Response: 20289791  
 Conc: 436.64 ng/ml



#35 AR-1260-5

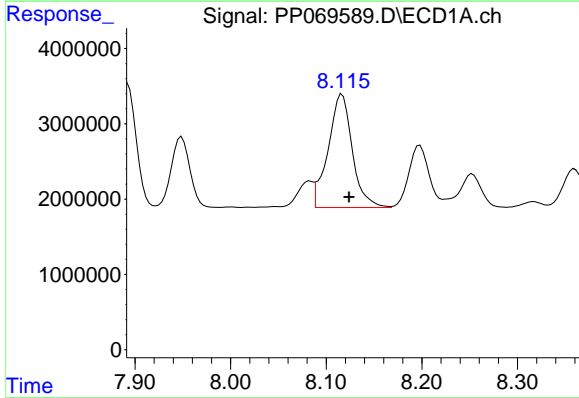
R.T.: 8.438 min  
 Delta R.T.: -0.009 min  
 Response: 51393039  
 Conc: 392.54 ng/ml

Instrument :  
 ECD\_P  
 ClientSampleId :  
 PB166599BS



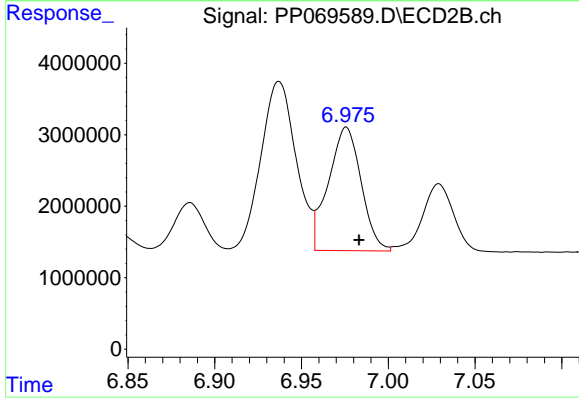
#35 AR-1260-5

R.T.: 7.476 min  
 Delta R.T.: -0.007 min  
 Response: 49082929  
 Conc: 441.61 ng/ml



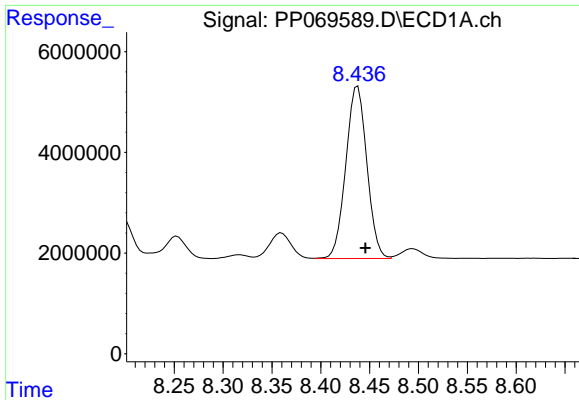
#36 AR-1262-1

R.T.: 8.117 min  
 Delta R.T.: -0.007 min  
 Response: 26480192  
 Conc: 335.11 ng/ml



#36 AR-1262-1

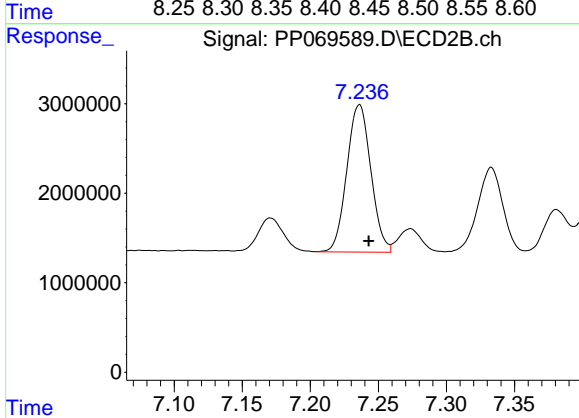
R.T.: 6.976 min  
 Delta R.T.: -0.007 min  
 Response: 22680271  
 Conc: 319.38 ng/ml



#37 AR-1262-2

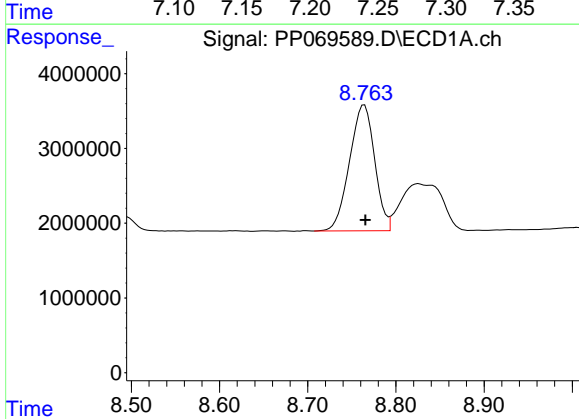
R.T.: 8.438 min  
 Delta R.T.: -0.008 min  
 Response: 51393039  
 Conc: 336.07 ng/ml

Instrument :  
 ECD\_P  
 ClientSampleId :  
 PB166599BS



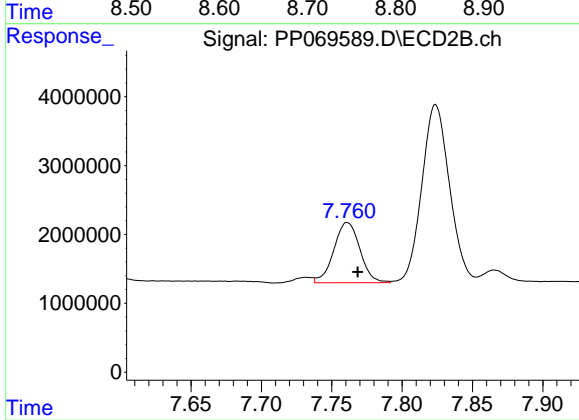
#37 AR-1262-2

R.T.: 7.236 min  
 Delta R.T.: -0.007 min  
 Response: 20289791  
 Conc: 332.73 ng/ml



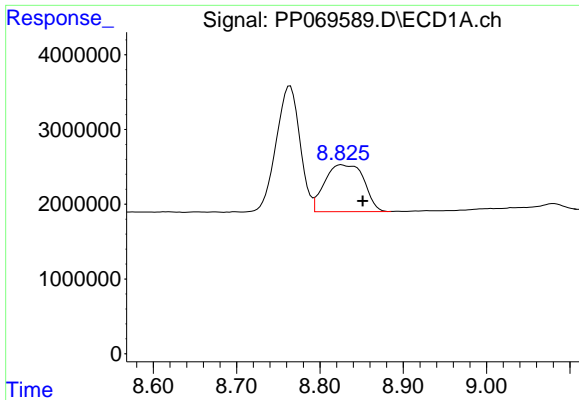
#38 AR-1262-3

R.T.: 8.764 min  
 Delta R.T.: -0.001 min  
 Response: 33396293  
 Conc: 314.23 ng/ml



#38 AR-1262-3

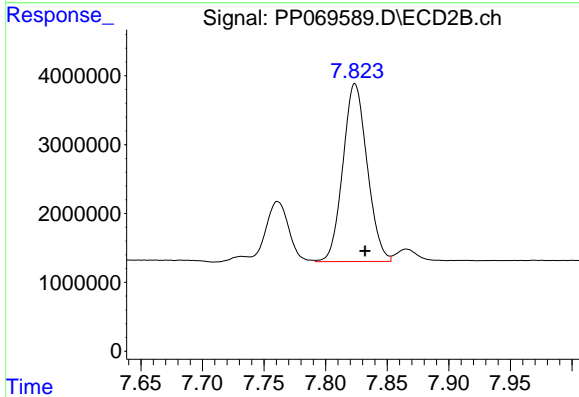
R.T.: 7.761 min  
 Delta R.T.: -0.007 min  
 Response: 11309728  
 Conc: 216.25 ng/ml



#39 AR-1262-4

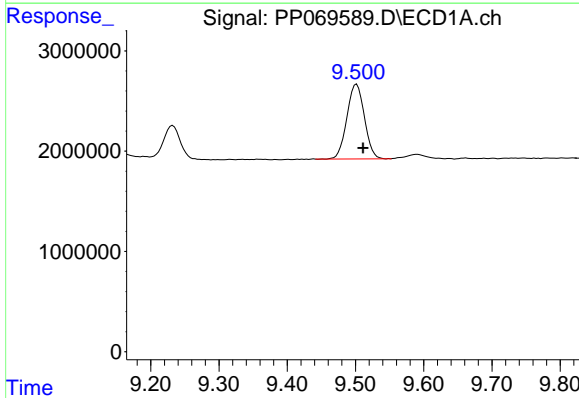
R.T.: 8.826 min  
 Delta R.T.: -0.026 min  
 Response: 20540723  
 Conc: 251.13 ng/ml

Instrument :  
 ECD\_P  
 ClientSampleId :  
 PB166599BS



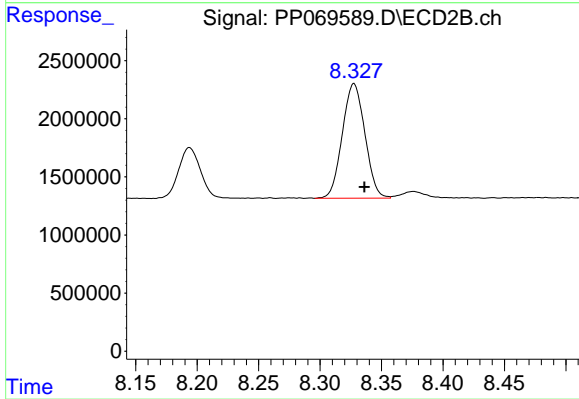
#39 AR-1262-4

R.T.: 7.824 min  
 Delta R.T.: -0.008 min  
 Response: 35367429  
 Conc: 382.61 ng/ml



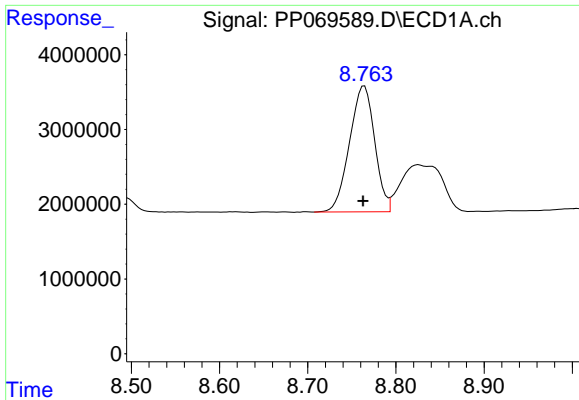
#40 AR-1262-5

R.T.: 9.502 min  
 Delta R.T.: -0.010 min  
 Response: 13292648  
 Conc: 234.81 ng/ml



#40 AR-1262-5

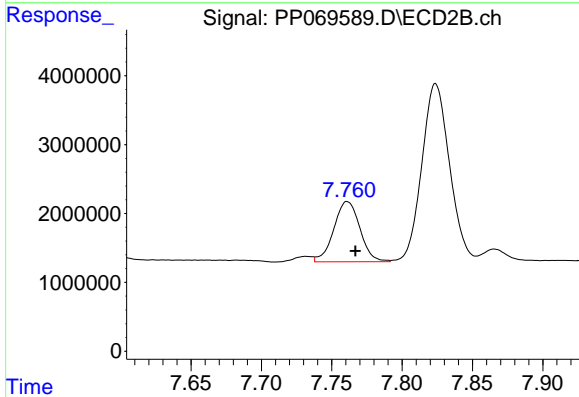
R.T.: 8.328 min  
 Delta R.T.: -0.008 min  
 Response: 12627651  
 Conc: 264.22 ng/ml



#41 AR-1268-1

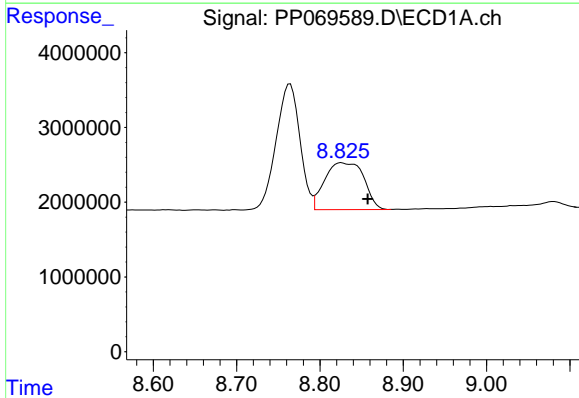
R.T.: 8.764 min  
 Delta R.T.: 0.001 min  
 Response: 33396293  
 Conc: 189.13 ng/ml

Instrument :  
 ECD\_P  
 ClientSampleId :  
 PB166599BS



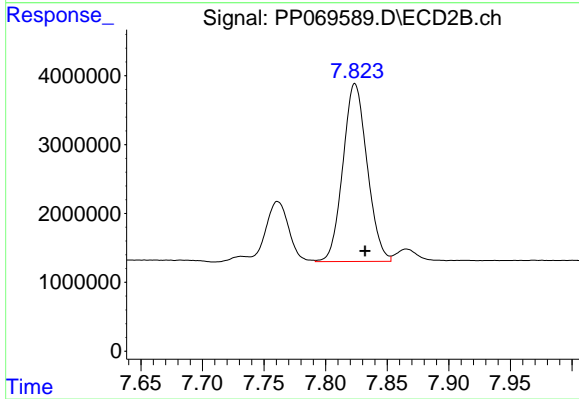
#41 AR-1268-1

R.T.: 7.761 min  
 Delta R.T.: -0.006 min  
 Response: 11309728  
 Conc: 77.93 ng/ml



#42 AR-1268-2

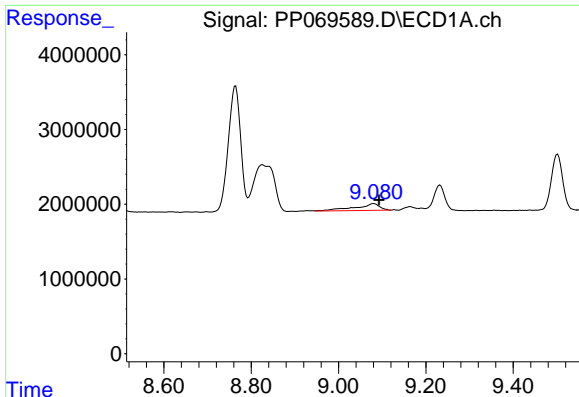
R.T.: 8.826 min  
 Delta R.T.: -0.031 min  
 Response: 20540723  
 Conc: 130.52 ng/ml



#42 AR-1268-2

R.T.: 7.824 min  
 Delta R.T.: -0.008 min  
 Response: 35367429  
 Conc: 266.29 ng/ml

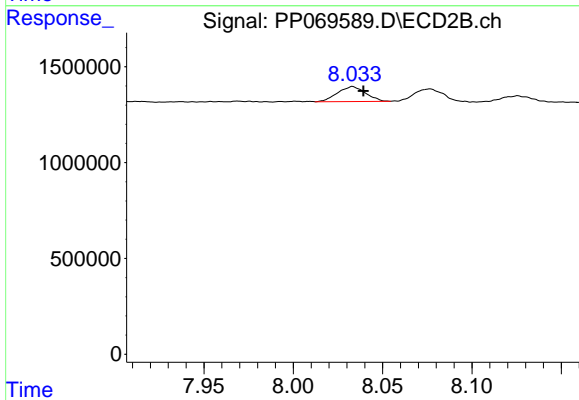




#43 AR-1268-3

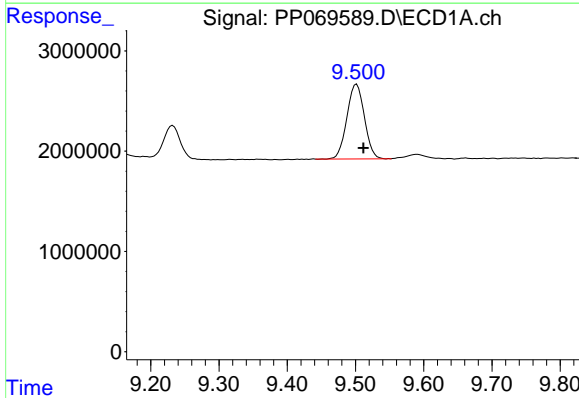
R.T.: 9.081 min  
 Delta R.T.: -0.012 min  
 Response: 3609324  
 Conc: 26.99 ng/ml

Instrument :  
 ECD\_P  
 ClientSampleId :  
 PB166599BS



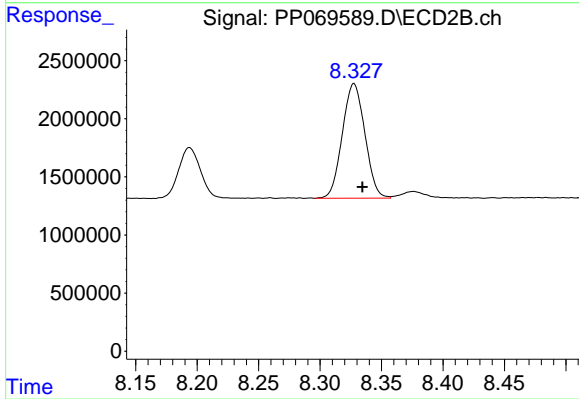
#43 AR-1268-3

R.T.: 8.033 min  
 Delta R.T.: -0.006 min  
 Response: 852836  
 Conc: 7.50 ng/ml



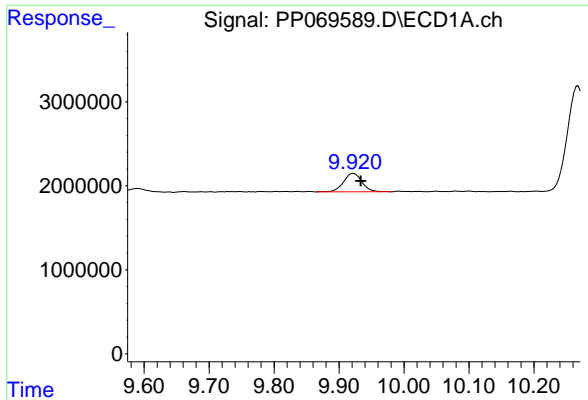
#44 AR-1268-4

R.T.: 9.502 min  
 Delta R.T.: -0.010 min  
 Response: 13292648  
 Conc: 226.37 ng/ml



#44 AR-1268-4

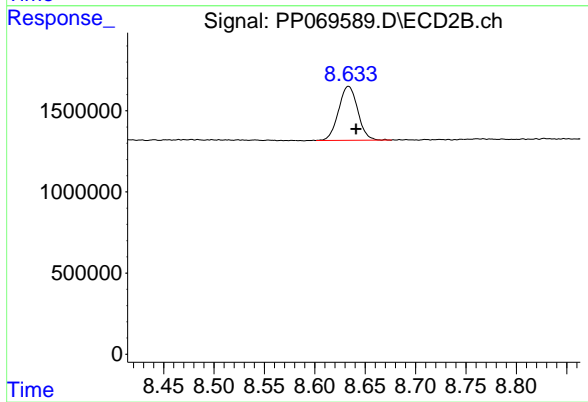
R.T.: 8.328 min  
 Delta R.T.: -0.007 min  
 Response: 12627651  
 Conc: 242.48 ng/ml



#45 AR-1268-5

R.T.: 9.922 min  
Delta R.T.: -0.012 min  
Response: 4324304  
Conc: 11.35 ng/ml

Instrument :  
ECD\_P  
ClientSampleId :  
PB166599BS



#45 AR-1268-5

R.T.: 8.633 min  
Delta R.T.: -0.008 min  
Response: 4404296  
Conc: 12.37 ng/ml