

Data Path : Z:\pestpcbsrv\HPCHEM1\ECD\_P\Data\PP020823\  
 Data File : PP055453.D  
 Signal(s) : Signal #1: ECD1A.ch Signal #2: ECD2B.ch  
 Acq On : 08 Feb 2023 15:05  
 Operator : YP\AJ  
 Sample : 01478-01MSD  
 Misc :  
 ALS Vial : 15 Sample Multiplier: 1

**Instrument :**  
 ECD\_P  
**ClientSampleId :**  
 SU-04-02072023MSD

**Manual Integrations**  
**APPROVED**

Reviewed By :Ankita Jodhani 02/09/2023  
 Supervised By :Sohil Jodhani 02/09/2023

Integration File signal 1: autoint1.e  
 Integration File signal 2: autoint2.e  
 Quant Time: Feb 08 21:49:50 2023  
 Quant Method : Z:\pestpcbsrv\HPCHEM1\ECD\_P\methods\PP012423.M  
 Quant Title : GC EXTRACTABLES  
 QLast Update : Tue Jan 24 03:37:45 2023  
 Response via : Initial Calibration  
 Integrator: ChemStation

Volume Inj. : 2 µl  
 Signal #1 Phase : ZB-MR1 Signal #2 Phase: ZB-MR2  
 Signal #1 Info : 30Mx0.32mmx 0.50µ Signal #2 Info : 30M x 0.32mm x 0.25µm

Compound	RT#1	RT#2	Resp#1	Resp#2	ng/ml	ng/ml
-----						
System Monitoring Compounds						
1) SA Tetrachlo...	4.329	3.576	33151798	27761326	19.067	18.493
2) SA Decachlor...	10.080	8.582	32194671	22869648	18.592	16.933
Target Compounds						
3) L1 AR-1016-1	5.498	4.657	28040757	24469985	417.210	494.404
4) L1 AR-1016-2	5.521	4.675	40151729	33424958	418.992	482.886
5) L1 AR-1016-3	5.583	4.851	24297695	17763487	406.205	477.557
6) L1 AR-1016-4	5.681	4.894	19307847	14923961	402.935	474.949
7) L1 AR-1016-5	5.977	5.106	18716916	15081715	369.358	368.886m
31) L7 AR-1260-1	7.108	6.142	35437435	35121690	371.748	452.923
32) L7 AR-1260-2	7.366	6.331	45215604	39883203	401.751	443.649
33) L7 AR-1260-3	7.728	6.484	26791809	35335358	332.739	416.148 #
34) L7 AR-1260-4	7.953	6.957	34404005	26293867	354.400	367.219
35) L7 AR-1260-5	8.271	7.200	62470915	63010661	351.255	409.862
-----						

(f)=RT Delta > 1/2 Window (#)=Amounts differ by > 25% (m)=manual int.

Data Path : Z:\pestpcbsrv\HPCHEM1\ECD\_P\Data\PP020823\  
 Data File : PP055453.D  
 Signal(s) : Signal #1: ECD1A.ch Signal #2: ECD2B.ch  
 Acq On : 08 Feb 2023 15:05  
 Operator : YP\AJ  
 Sample : 01478-01MSD  
 Misc :  
 ALS Vial : 15 Sample Multiplier: 1

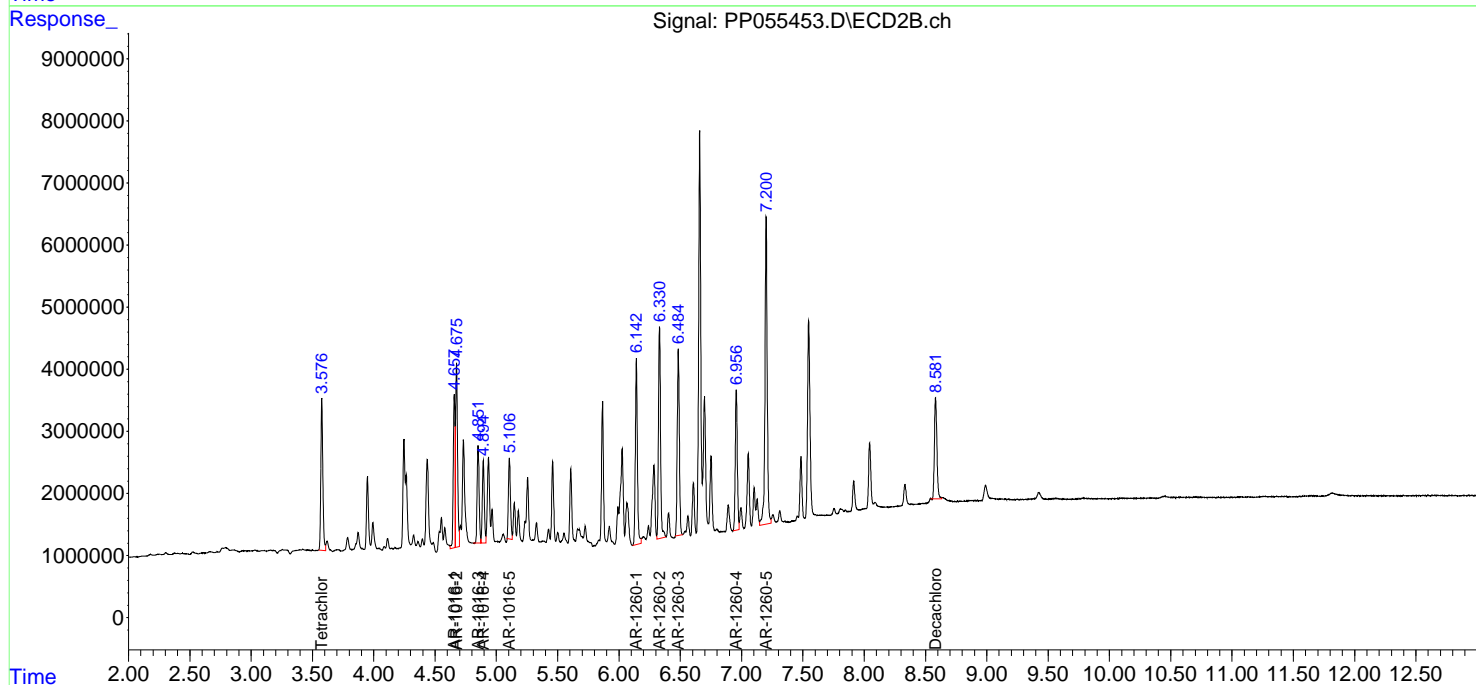
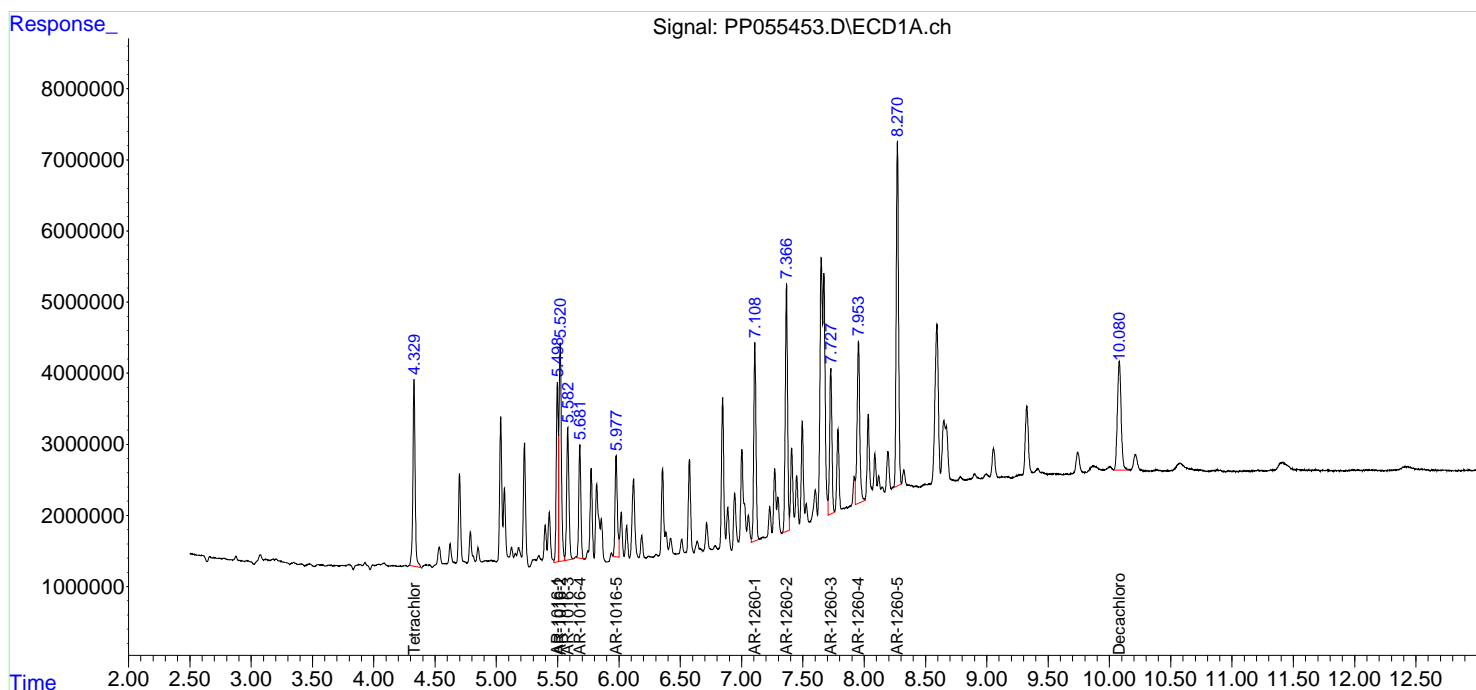
Instrument :  
 ECD\_P  
 ClientSampleId :  
 SU-04-02072023MSD

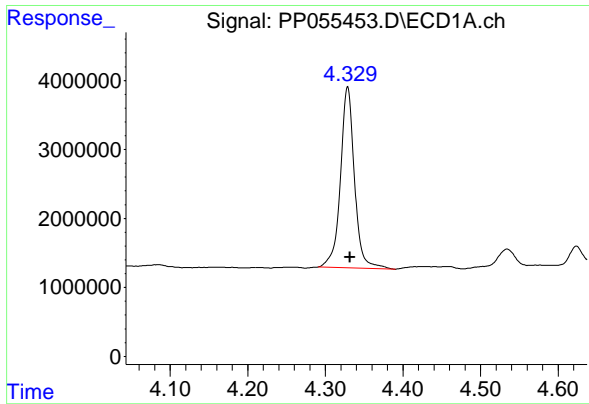
Manual Integrations  
 APPROVED

Reviewed By :Ankita Jodhani 02/09/2023  
 Supervised By :Sohil Jodhani 02/09/2023

Integration File signal 1: autoint1.e  
 Integration File signal 2: autoint2.e  
 Quant Time: Feb 08 21:49:50 2023  
 Quant Method : Z:\pestpcbsrv\HPCHEM1\ECD\_P\methods\PP012423.M  
 Quant Title : GC EXTRACTABLES  
 QLast Update : Tue Jan 24 03:37:45 2023  
 Response via : Initial Calibration  
 Integrator: ChemStation

Volume Inj. : 2 µl  
 Signal #1 Phase : ZB-MR1 Signal #2 Phase: ZB-MR2  
 Signal #1 Info : 30Mx0.32mmx 0.50µm Signal #2 Info : 30M x 0.32mm x 0.25µm





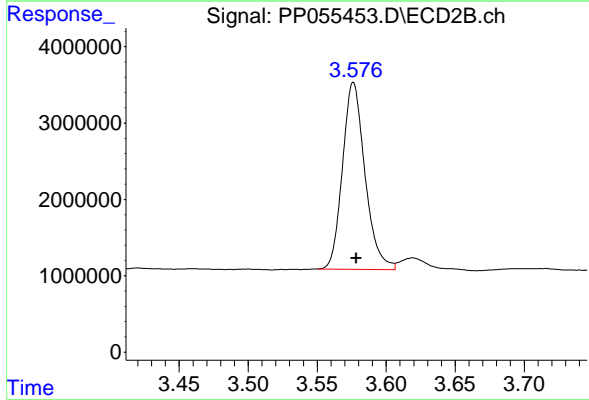
#1 Tetrachloro-m-xylene

R.T.: 4.329 min  
 Delta R.T.: -0.003 min  
 Response: 33151798  
 Conc: 19.07 ng/ml

Instrument : ECD\_P  
 Client Sample Id : SU-04-02072023MSD

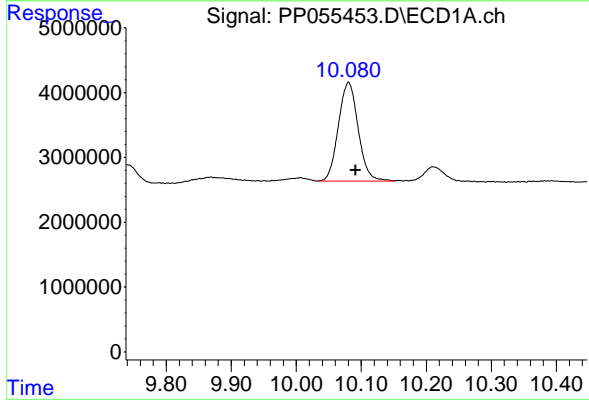
Manual Integrations  
 APPROVED

Reviewed By :Ankita Jodhani 02/09/2023  
 Supervised By :Sohil Jodhani 02/09/2023



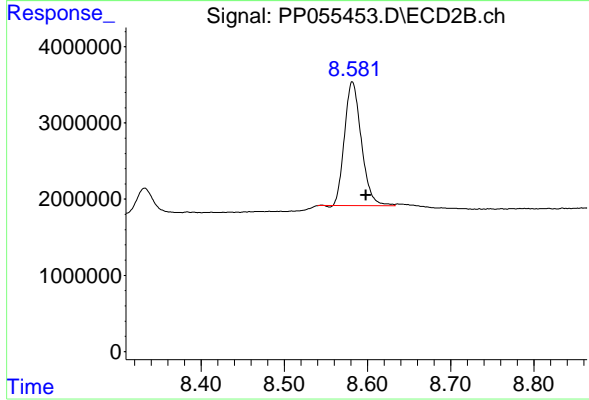
#1 Tetrachloro-m-xylene

R.T.: 3.576 min  
 Delta R.T.: -0.002 min  
 Response: 27761326  
 Conc: 18.49 ng/ml



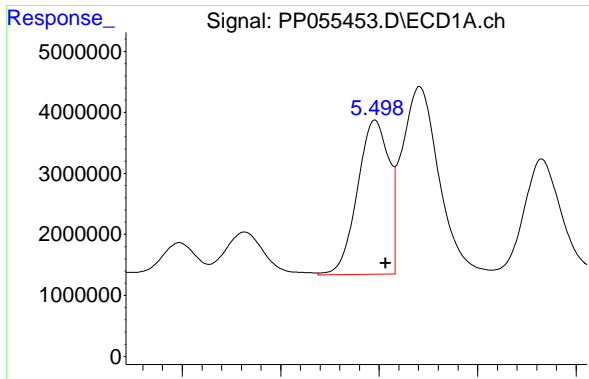
#2 Decachlorobiphenyl

R.T.: 10.080 min  
 Delta R.T.: -0.010 min  
 Response: 32194671  
 Conc: 18.59 ng/ml



#2 Decachlorobiphenyl

R.T.: 8.582 min  
 Delta R.T.: -0.016 min  
 Response: 22869648  
 Conc: 16.93 ng/ml



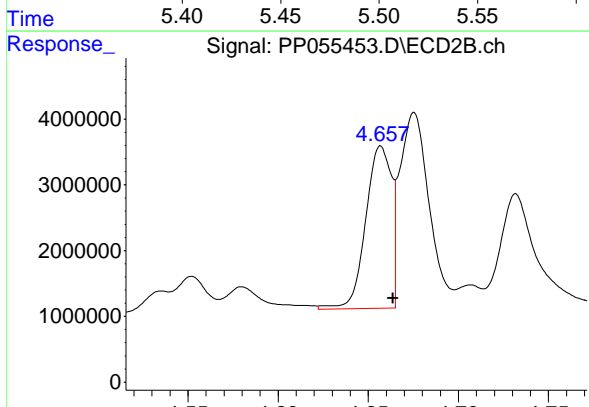
#3 AR-1016-1

R.T.: 5.498 min  
 Delta R.T.: -0.005 min  
 Response: 28040757  
 Conc: 417.21 ng/ml

Instrument : ECD\_P  
 Client Sample Id : SU-04-02072023MSD

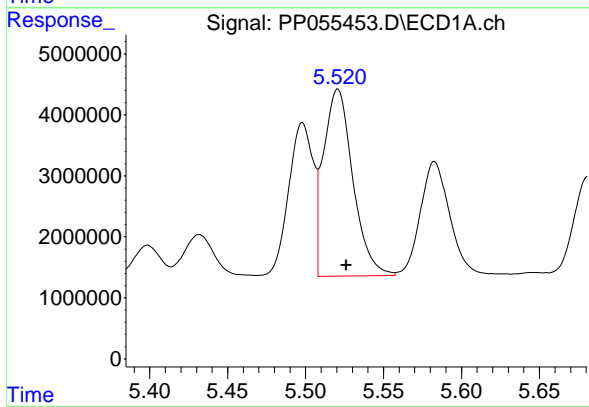
Manual Integrations  
 APPROVED

Reviewed By :Ankita Jodhani 02/09/2023  
 Supervised By :Sohil Jodhani 02/09/2023



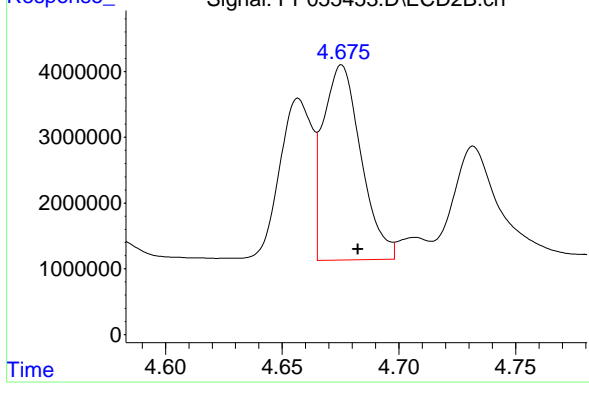
#3 AR-1016-1

R.T.: 4.657 min  
 Delta R.T.: -0.007 min  
 Response: 24469985  
 Conc: 494.40 ng/ml



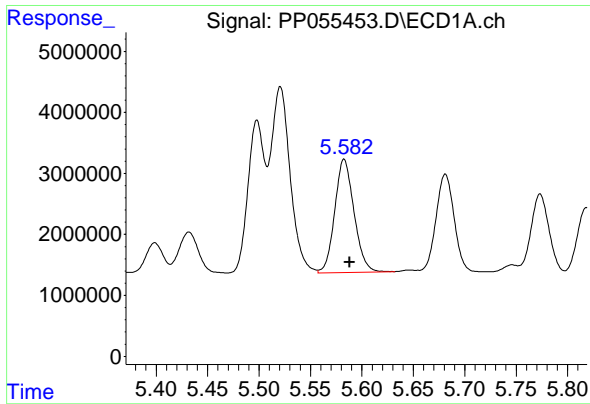
#4 AR-1016-2

R.T.: 5.521 min  
 Delta R.T.: -0.005 min  
 Response: 40151729  
 Conc: 418.99 ng/ml



#4 AR-1016-2

R.T.: 4.675 min  
 Delta R.T.: -0.007 min  
 Response: 33424958  
 Conc: 482.89 ng/ml



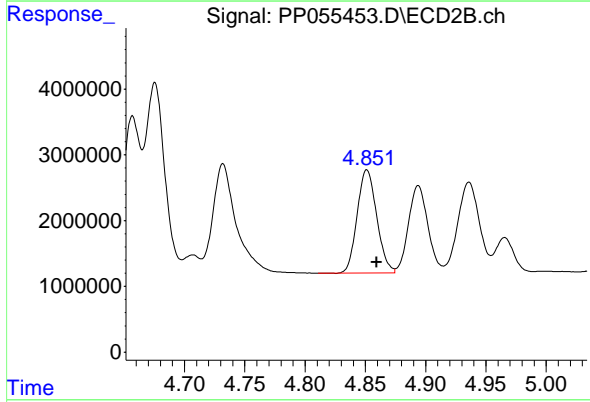
#5 AR-1016-3

R.T.: 5.583 min  
 Delta R.T.: -0.005 min  
 Response: 24297695  
 Conc: 406.20 ng/ml

Instrument : ECD\_P  
 Client Sample Id : SU-04-02072023MSD

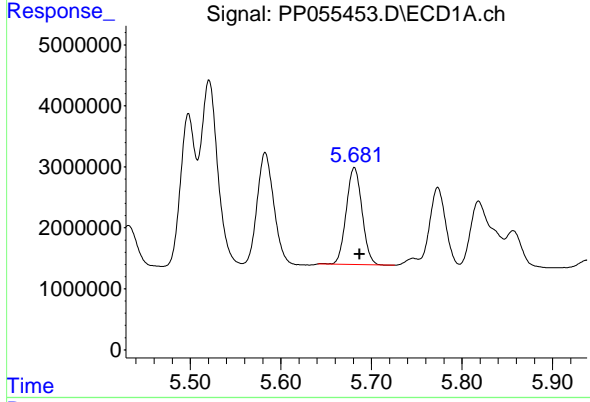
Manual Integrations  
 APPROVED

Reviewed By :Ankita Jodhani 02/09/2023  
 Supervised By :Sohil Jodhani 02/09/2023



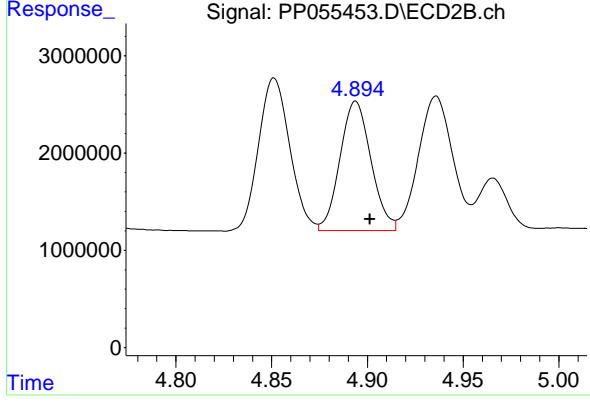
#5 AR-1016-3

R.T.: 4.851 min  
 Delta R.T.: -0.008 min  
 Response: 17763487  
 Conc: 477.56 ng/ml



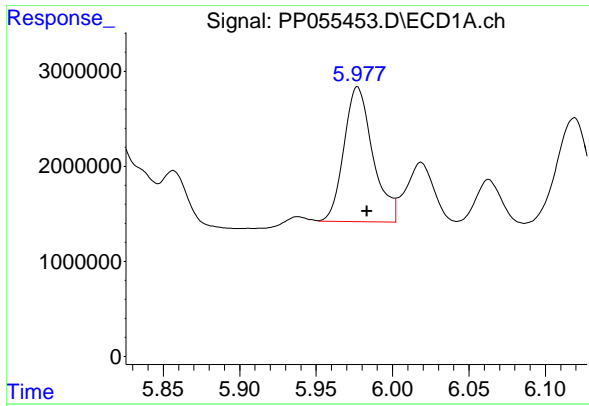
#6 AR-1016-4

R.T.: 5.681 min  
 Delta R.T.: -0.006 min  
 Response: 19307847  
 Conc: 402.93 ng/ml



#6 AR-1016-4

R.T.: 4.894 min  
 Delta R.T.: -0.007 min  
 Response: 14923961  
 Conc: 474.95 ng/ml



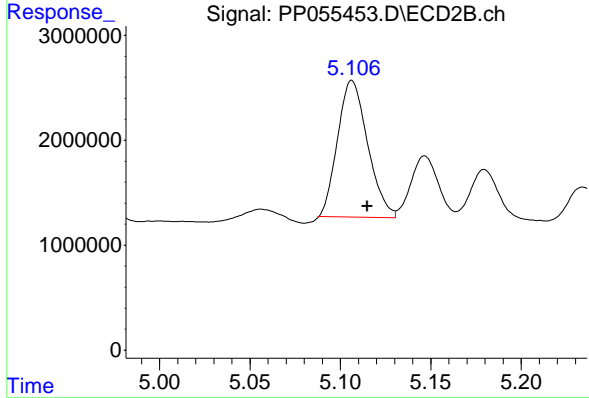
#7 AR-1016-5

R.T.: 5.977 min  
 Delta R.T.: -0.006 min  
 Response: 18716916  
 Conc: 369.36 ng/ml

Instrument : ECD\_P  
 ClientSampleId : SU-04-02072023MSD

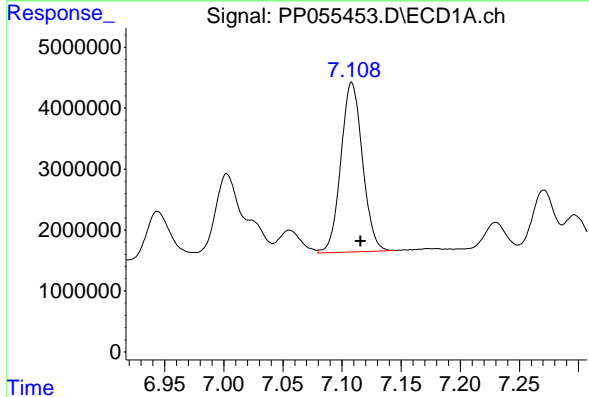
Manual Integrations  
 APPROVED

Reviewed By :Ankita Jodhani 02/09/2023  
 Supervised By :Sohil Jodhani 02/09/2023



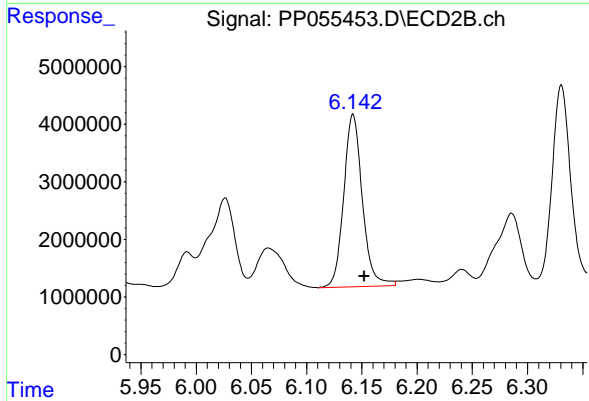
#7 AR-1016-5

R.T.: 5.106 min  
 Delta R.T.: -0.009 min  
 Response: 15081715  
 Conc: 368.89 ng/ml m



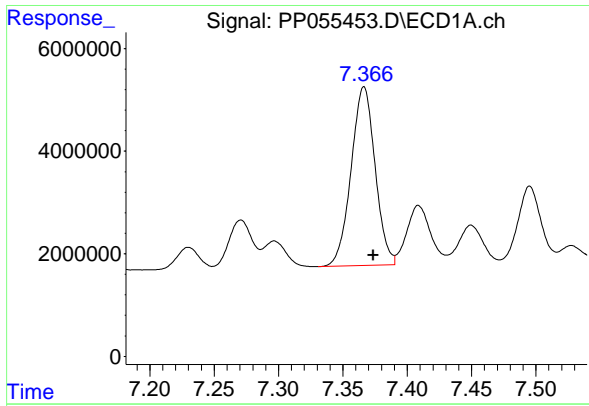
#31 AR-1260-1

R.T.: 7.108 min  
 Delta R.T.: -0.008 min  
 Response: 35437435  
 Conc: 371.75 ng/ml



#31 AR-1260-1

R.T.: 6.142 min  
 Delta R.T.: -0.010 min  
 Response: 35121690  
 Conc: 452.92 ng/ml



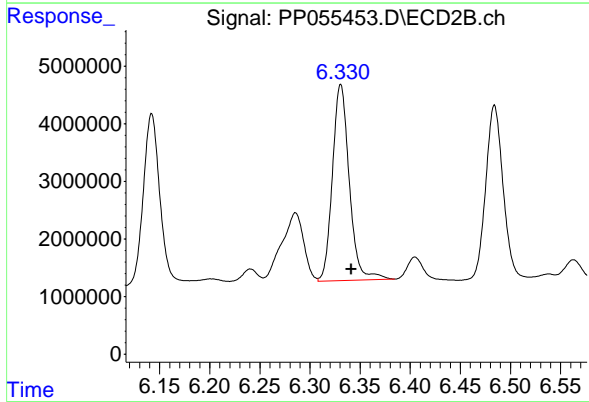
#32 AR-1260-2

R.T.: 7.366 min  
 Delta R.T.: -0.007 min  
 Response: 45215604  
 Conc: 401.75 ng/ml

Instrument : ECD\_P  
 Client Sample Id : SU-04-02072023MSD

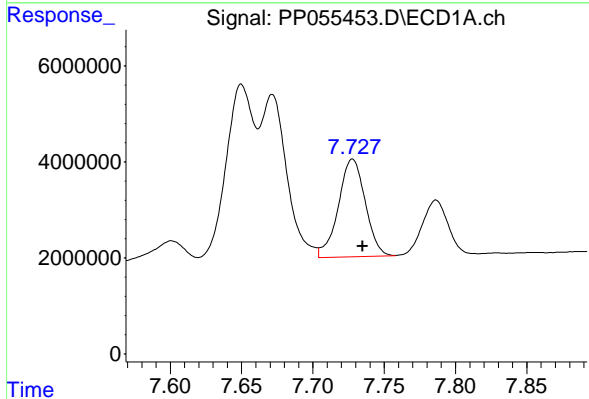
Manual Integrations  
 APPROVED

Reviewed By :Ankita Jodhani 02/09/2023  
 Supervised By :Sohil Jodhani 02/09/2023



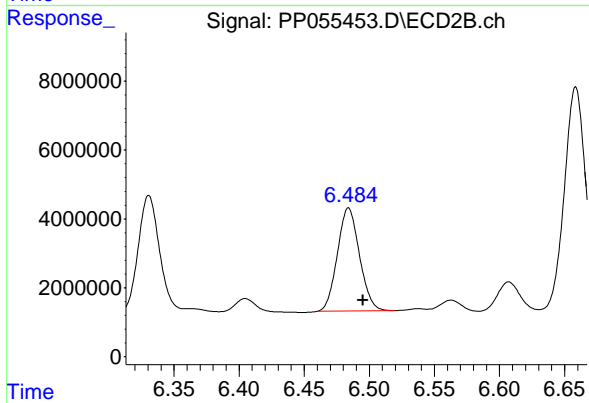
#32 AR-1260-2

R.T.: 6.331 min  
 Delta R.T.: -0.011 min  
 Response: 39883203  
 Conc: 443.65 ng/ml



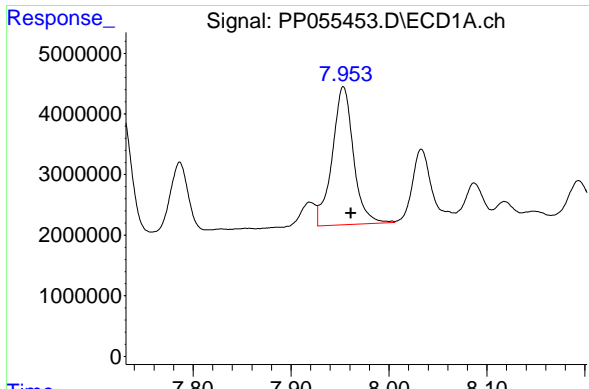
#33 AR-1260-3

R.T.: 7.728 min  
 Delta R.T.: -0.007 min  
 Response: 26791809  
 Conc: 332.74 ng/ml



#33 AR-1260-3

R.T.: 6.484 min  
 Delta R.T.: -0.011 min  
 Response: 35335358  
 Conc: 416.15 ng/ml



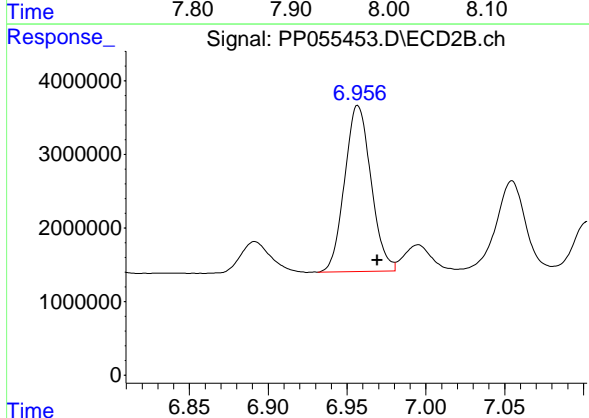
#34 AR-1260-4

R.T.: 7.953 min  
 Delta R.T.: -0.008 min  
 Response: 34404005  
 Conc: 354.40 ng/ml

Instrument : ECD\_P  
 Client Sample Id : SU-04-02072023MSD

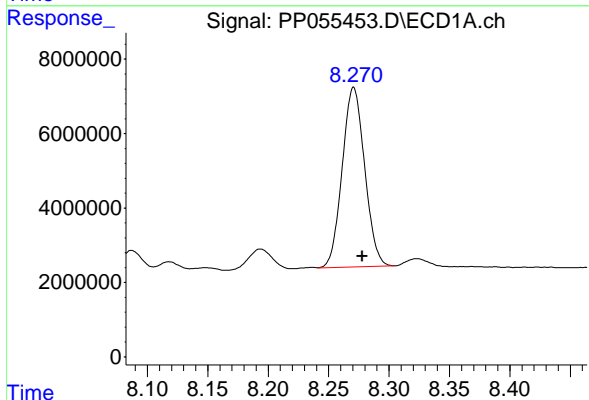
Manual Integrations  
 APPROVED

Reviewed By :Ankita Jodhani 02/09/2023  
 Supervised By :Sohil Jodhani 02/09/2023



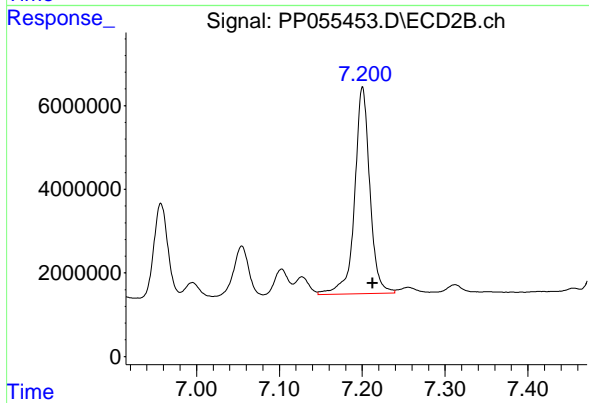
#34 AR-1260-4

R.T.: 6.957 min  
 Delta R.T.: -0.012 min  
 Response: 26293867  
 Conc: 367.22 ng/ml



#35 AR-1260-5

R.T.: 8.271 min  
 Delta R.T.: -0.007 min  
 Response: 62470915  
 Conc: 351.26 ng/ml



#35 AR-1260-5

R.T.: 7.200 min  
 Delta R.T.: -0.012 min  
 Response: 63010661  
 Conc: 409.86 ng/ml