

Data Path : Z:\pestpcbsrv\HPCHEM1\ECD_P\Data\PP020823\
 Data File : PP055466.D
 Signal(s) : Signal #1: ECD1A.ch Signal #2: ECD2B.ch
 Acq On : 08 Feb 2023 18:49
 Operator : YP\AJ
 Sample : 01473-02
 Misc :
 ALS Vial : 26 Sample Multiplier: 1

Instrument :
 ECD_P
ClientSampleId :
 002

Manual Integrations
APPROVED
 Reviewed By :Ankita Jodhani 02/09/2023
 Supervised By :Sohil Jodhani 02/09/2023

Integration File signal 1: autoint1.e
 Integration File signal 2: autoint2.e
 Quant Time: Feb 08 22:08:46 2023
 Quant Method : Z:\pestpcbsrv\HPCHEM1\ECD_P\methods\PP012423.M
 Quant Title : GC EXTRACTABLES
 QLast Update : Tue Jan 24 03:37:45 2023
 Response via : Initial Calibration
 Integrator: ChemStation

Volume Inj. : 2 µl
 Signal #1 Phase : ZB-MR1 Signal #2 Phase: ZB-MR2
 Signal #1 Info : 30Mx0.32mmx 0.50µ Signal #2 Info : 30M x 0.32mm x 0.25µm

Compound	RT#1	RT#2	Resp#1	Resp#2	ng/ml	ng/ml

System Monitoring Compounds						
1) SA Tetrachlo...	4.339	3.592	22444307	19967917	12.909m	13.301
2) SA Decachlor...	10.075	8.581	34528568	27696848	19.939	20.508

Target Compounds

 (f)=RT Delta > 1/2 Window (#)=Amounts differ by > 25% (m)=manual int.

Data Path : Z:\pestpcbsrv\HPCHEM1\ECD_P\Data\PP020823\
 Data File : PP055466.D
 Signal(s) : Signal #1: ECD1A.ch Signal #2: ECD2B.ch
 Acq On : 08 Feb 2023 18:49
 Operator : YP\AJ
 Sample : 01473-02
 Misc :
 ALS Vial : 26 Sample Multiplier: 1

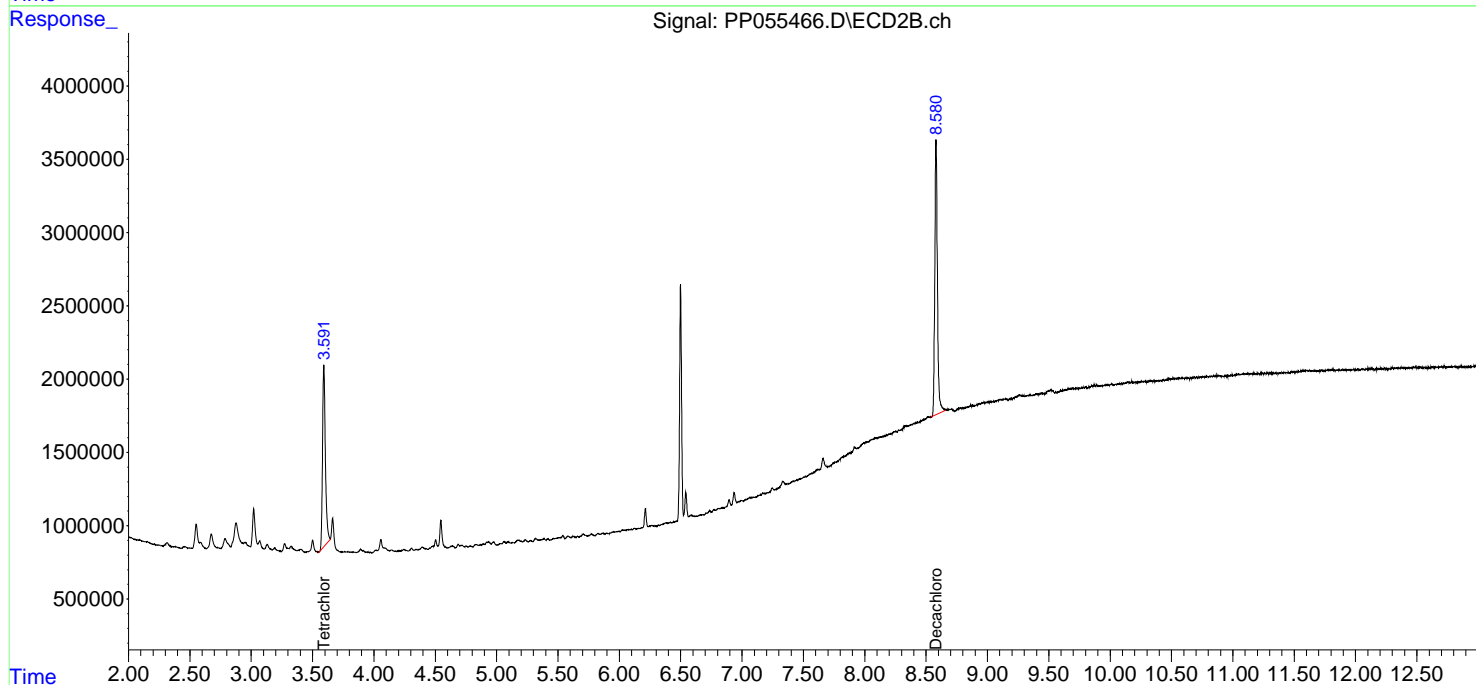
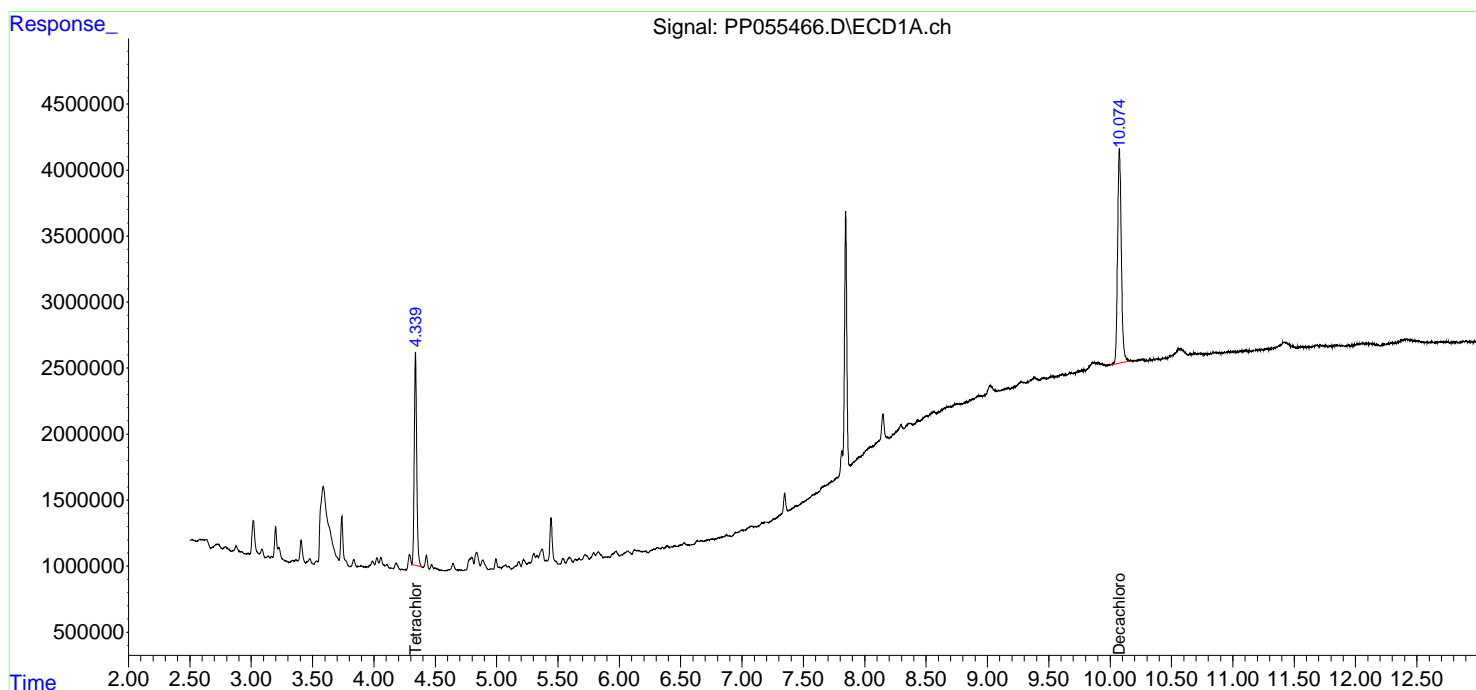
Instrument :
 ECD_P
 ClientSampleID :
 002

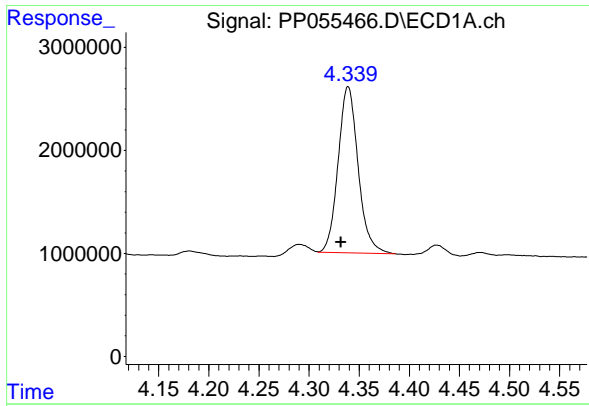
Manual Integrations
APPROVED

Reviewed By :Ankita Jodhani 02/09/2023
 Supervised By :Sohil Jodhani 02/09/2023

Integration File signal 1: autoint1.e
 Integration File signal 2: autoint2.e
 Quant Time: Feb 08 22:08:46 2023
 Quant Method : Z:\pestpcbsrv\HPCHEM1\ECD_P\methods\PP012423.M
 Quant Title : GC EXTRACTABLES
 QLast Update : Tue Jan 24 03:37:45 2023
 Response via : Initial Calibration
 Integrator: ChemStation

Volume Inj. : 2 µl
 Signal #1 Phase : ZB-MR1 Signal #2 Phase: ZB-MR2
 Signal #1 Info : 30Mx0.32mmx 0.50µm Signal #2 Info : 30M x 0.32mm x 0.25µm





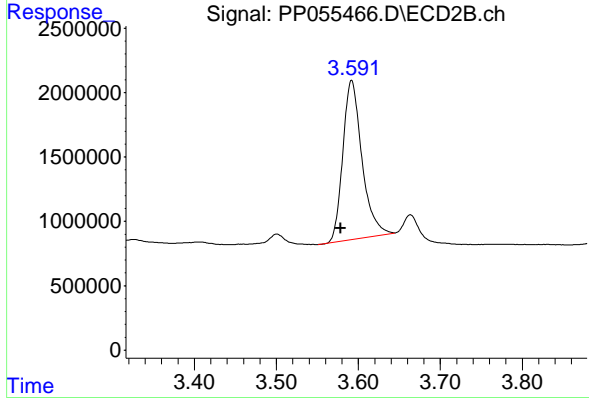
#1 Tetrachloro-m-xylene

R.T.: 4.339 min
 Delta R.T.: 0.007 min
 Response: 22444307
 Conc: 12.91 ng/ml

Instrument : ECD_P
 ClientSampleId : 002

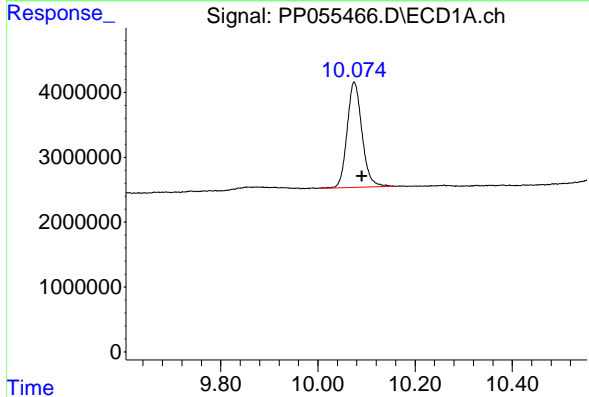
Manual Integrations
 APPROVED

Reviewed By :Ankita Jodhani 02/09/2023
 Supervised By :Sohil Jodhani 02/09/2023



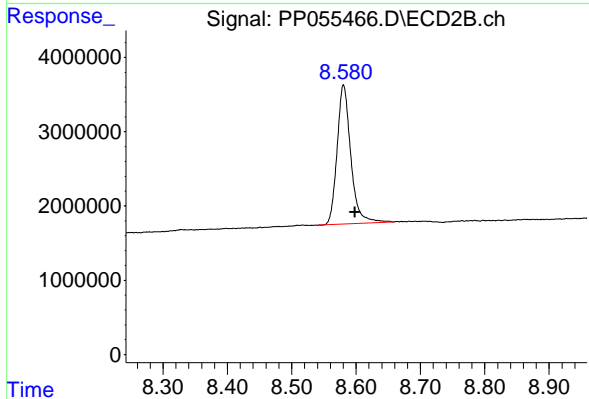
#1 Tetrachloro-m-xylene

R.T.: 3.592 min
 Delta R.T.: 0.014 min
 Response: 19967917
 Conc: 13.30 ng/ml



#2 Decachlorobiphenyl

R.T.: 10.075 min
 Delta R.T.: -0.016 min
 Response: 34528568
 Conc: 19.94 ng/ml



#2 Decachlorobiphenyl

R.T.: 8.581 min
 Delta R.T.: -0.018 min
 Response: 27696848
 Conc: 20.51 ng/ml